

Data Path : Z:\VOASRV\HPCHEM1\MSVOA_U\DATA\VU071818\
 Data File : VU025501.D
 Acq On : 18 Jul 2018 16:47
 Operator : MD/SY
 Sample : J3984-16
 Misc : 5.0mL/MSVOA_U/WATER
 ALS Vial : 18 Sample Multiplier: 1

Quant Time: Jul 19 01:09:39 2018
 Quant Method : Z:\VOASRV\HPCHEM1\MSVOA_U\METHOD\SOMULM071718WMA.M
 Quant Title : VOC Analysis
 QLast Update : Thu Jul 19 01:07:14 2018
 Response via : Initial Calibration

Internal Standards	R.T.	QIon	Response	Conc	Units	Dev(Min)
1) 1,4-Difluorobenzene	5.89	114	286123	50.00	ug/L	0.00
28) Chlorobenzene-d5	9.09	117	258985	50.00	ug/L	0.00
60) 1,4-Dichlorobenzene-d4	11.49	152	124245	50.00	ug/L	0.00

System Monitoring Compounds

4) Vinyl Chloride-d3	1.40	65	65323	48.41	ug/L	0.00
Spiked Amount	50.000	Range	60 - 135	Recovery	=	96.82%
7) Chloroethane-d5	1.68	69	59416	51.69	ug/L	0.00
Spiked Amount	50.000	Range	70 - 130	Recovery	=	103.38%
11) 1,1-Dichloroethene-d2	2.27	63	113180	38.20	ug/L	0.00
Spiked Amount	50.000	Range	60 - 125	Recovery	=	76.40%
21) 2-Butanone-d5	4.18	46	150482	104.81	ug/L	0.00
Spiked Amount	100.000	Range	40 - 130	Recovery	=	104.81%
24) Chloroform-d	4.65	84	182637	52.18	ug/L	0.00
Spiked Amount	50.000	Range	70 - 125	Recovery	=	104.36%
26) 1,2-Dichloroethane-d4	5.31	65	124543	52.28	ug/L	0.00
Spiked Amount	50.000	Range	70 - 125	Recovery	=	104.56%
32) Benzene-d6	5.35	84	336414	53.75	ug/L	0.00
Spiked Amount	50.000	Range	70 - 125	Recovery	=	107.50%
36) 1,2-Dichloropropane-d6	6.33	67	114304	55.15	ug/L	0.00
Spiked Amount	50.000	Range	70 - 120	Recovery	=	110.30%
41) Toluene-d8	7.57	98	316300	52.21	ug/L	0.00
Spiked Amount	50.000	Range	80 - 120	Recovery	=	104.42%
43) trans-1,3-Dichloropropene-	7.85	79	56101	52.00	ug/L	0.00
Spiked Amount	50.000	Range	60 - 125	Recovery	=	104.00%
47) 2-Hexanone-d5	8.31	63	109362	101.78	ug/L	0.00
Spiked Amount	100.000	Range	45 - 130	Recovery	=	101.78%
57) 1,1,2,2-Tetrachloroethane-	10.44	84	160140	52.04	ug/L	0.00
Spiked Amount	50.000	Range	65 - 120	Recovery	=	104.08%
64) 1,2-Dichlorobenzene-d4	11.86	152	133755	53.72	ug/L	0.00
Spiked Amount	50.000	Range	80 - 120	Recovery	=	107.44%

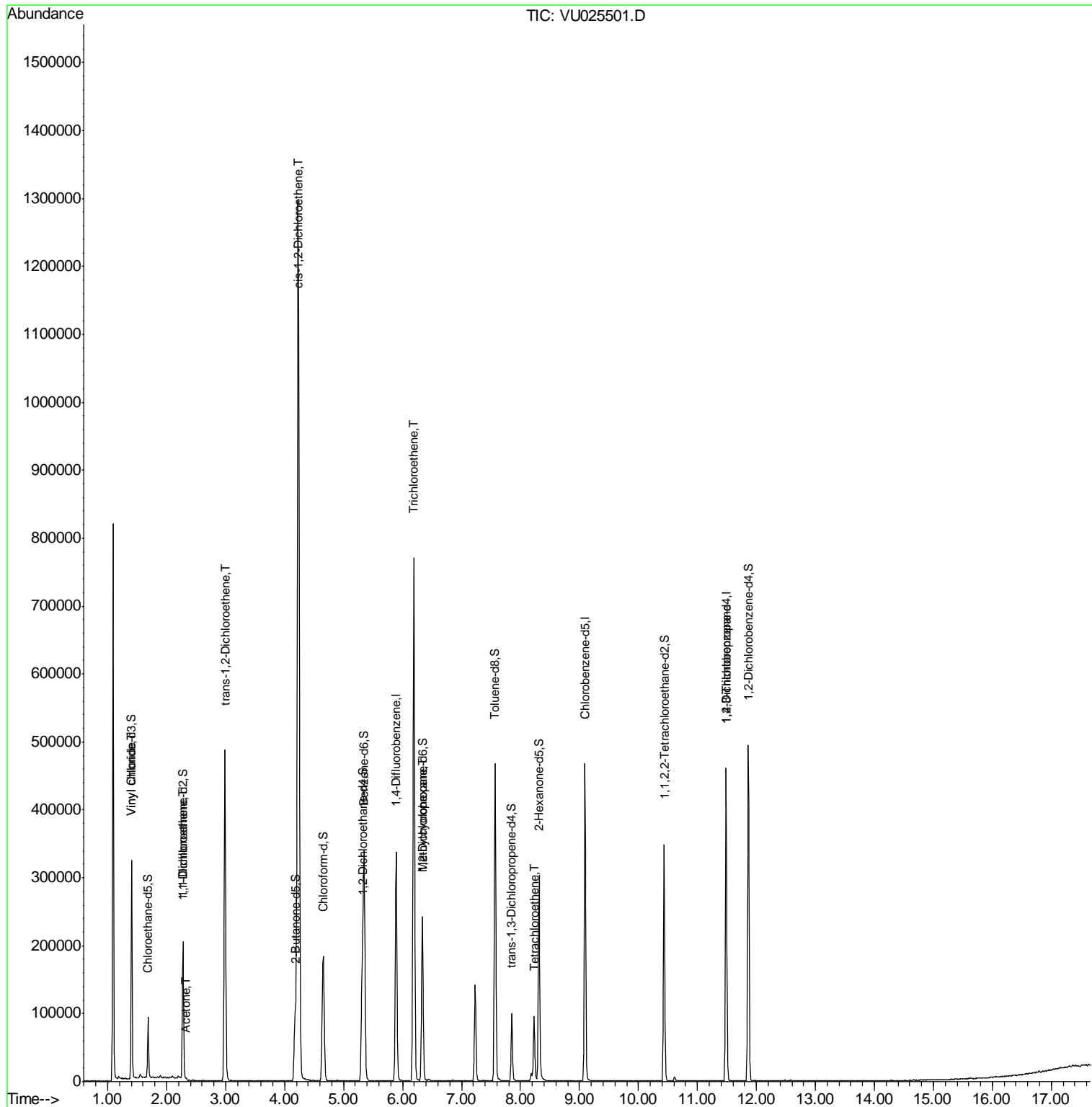
Target Compounds

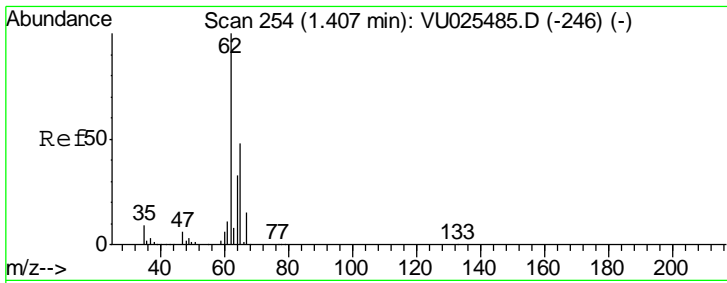
Target Compounds	R.T.	QIon	Response	Conc	Units	Qvalue
5) Vinyl chloride	1.41	62	147126	70.243	ug/L	99
12) 1,1-Dichloroethene	2.29	96	3759	2.424	ug/L #	1
13) Acetone	2.32	43	2304	1.838	ug/L	90
17) trans-1,2-Dichloroethene	2.99	96	189417	103.260	ug/L	99
20) cis-1,2-Dichloroethene	4.23	96	729185	324.673	ug/L	99
34) Trichloroethene	6.19	95	257709	127.061	ug/L	97
35) Methylcyclohexane	6.33	83	27484	8.925	ug/L #	19
46) Tetrachloroethene	8.23	164	21053	12.443	ug/L	95
59) 1,2,3-Trichloropropane	11.48	75	12916	4.595	ug/L #	83

(#) = qualifier out of range (m) = manual integration (+) = signals summed

Data Path : Z:\VOASRV\HPCHEM1\MSVOA_U\DATA\VU071818\
 Data File : VU025501.D
 Acq On : 18 Jul 2018 16:47
 Operator : MD/SY
 Sample : J3984-16
 Misc : 5.0mL/MSVOA_U/WATER
 ALS Vial : 18 Sample Multiplier: 1

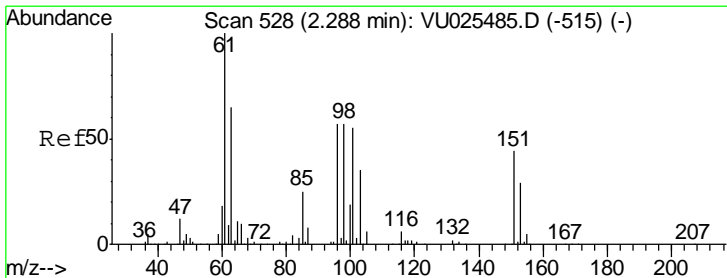
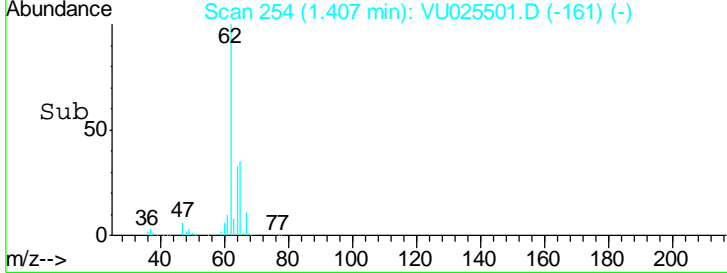
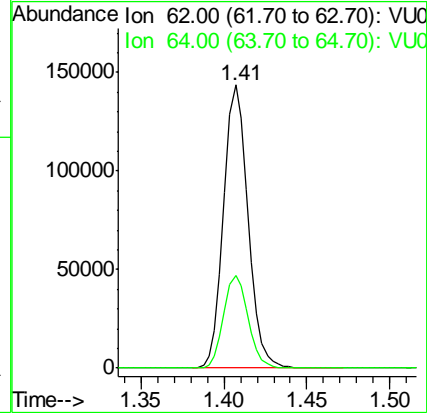
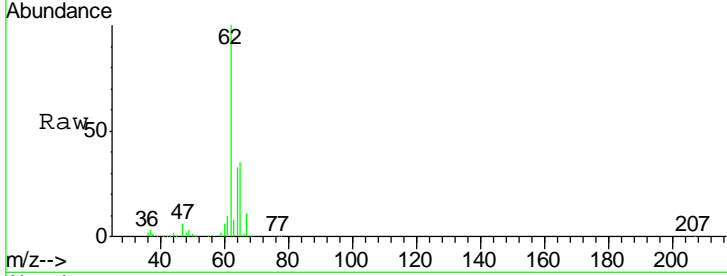
Quant Time: Jul 19 01:09:39 2018
 Quant Method : Z:\VOASRV\HPCHEM1\MSVOA_U\METHOD\SOMULM071718WMA.M
 Quant Title : VOC Analysis
 QLast Update : Thu Jul 19 01:07:14 2018
 Response via : Initial Calibration





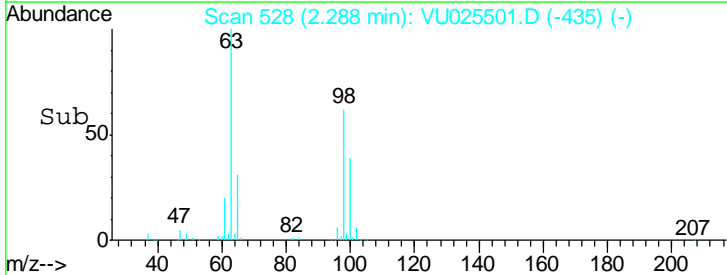
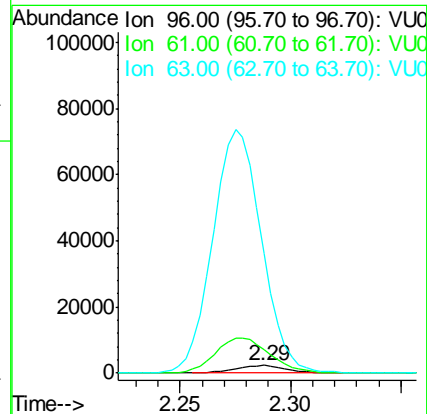
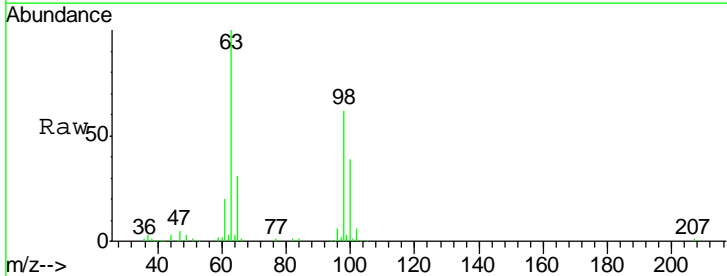
#5
 Vinyl chloride
 Concen: 70.243 ug/L
 RT: 1.41 min Scan# 254
 Delta R.T. 0.00 min
 Lab File: VU025501.D
 Acq: 18 Jul 2018 16:47

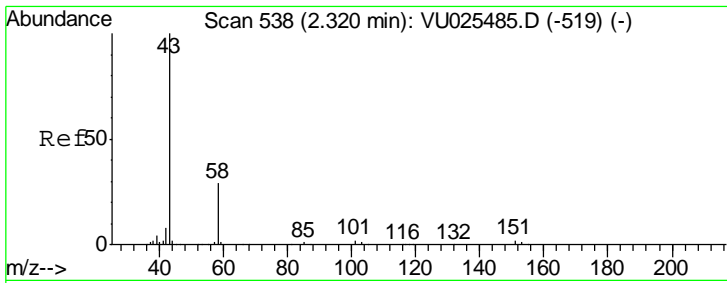
Tgt Ion	Resp	Lower	Upper
62	147126		
64	32.9	22.7	42.1



#12
 1,1-Dichloroethene
 Concen: 2.424 ug/L
 RT: 2.29 min Scan# 528
 Delta R.T. 0.00 min
 Lab File: VU025501.D
 Acq: 18 Jul 2018 16:47

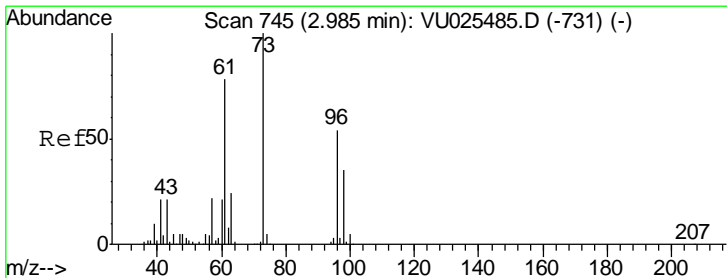
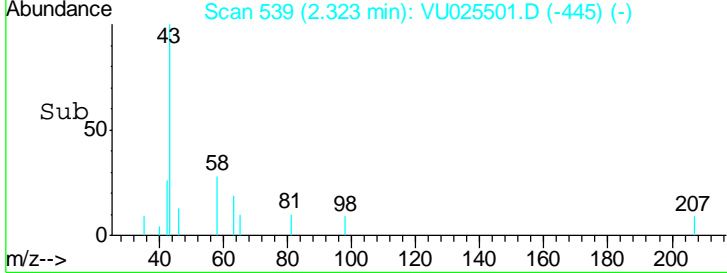
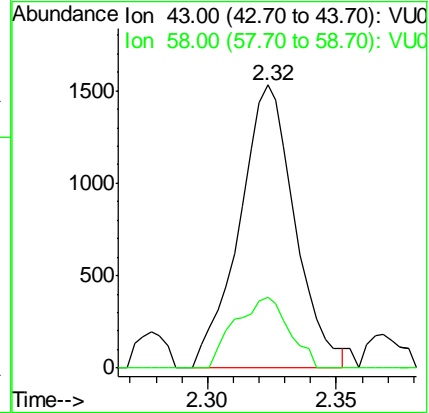
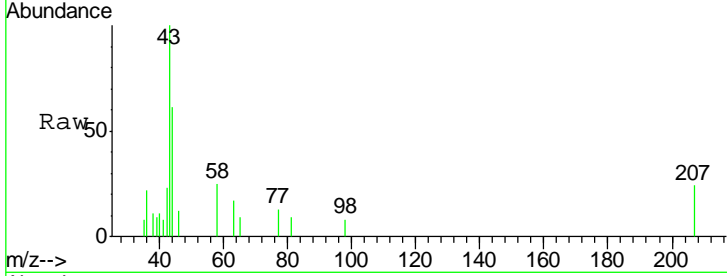
Tgt Ion	Resp	Lower	Upper
96	3759		
61	320.0	120.6	224.0#
63	1598.6	79.3	147.3#





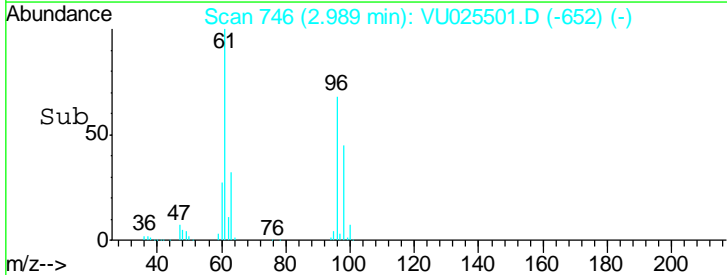
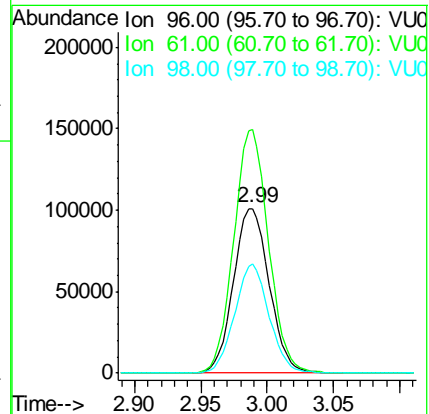
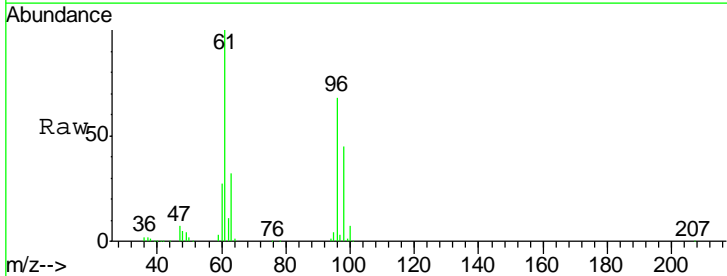
#13
 Acetone
 Concen: 1.838 ug/L
 RT: 2.32 min Scan# 539
 Delta R.T. 0.00 min
 Lab File: VU025501.D
 Acq: 18 Jul 2018 16:47

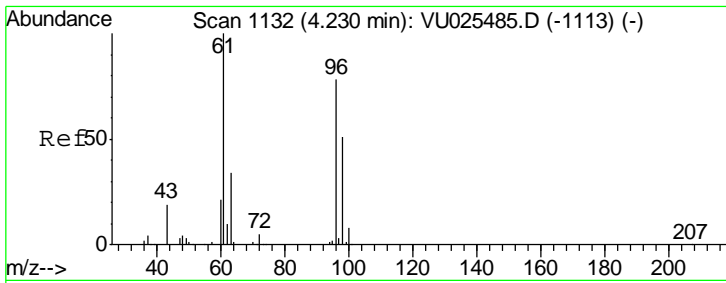
Tgt Ion	Resp	Lower	Upper
43	100		
58	24.3	0.0	59.0



#17
 trans-1,2-Dichloroethene
 Concen: 103.260 ug/L
 RT: 2.99 min Scan# 746
 Delta R.T. 0.00 min
 Lab File: VU025501.D
 Acq: 18 Jul 2018 16:47

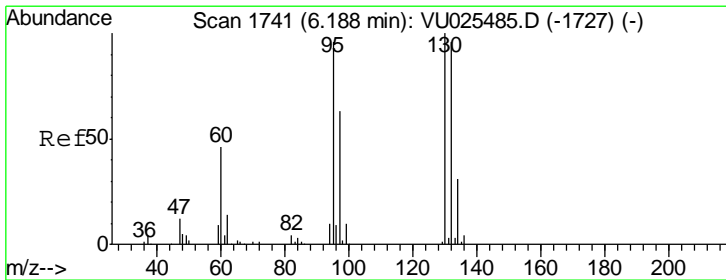
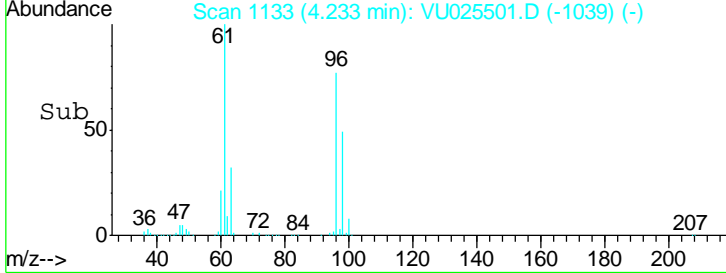
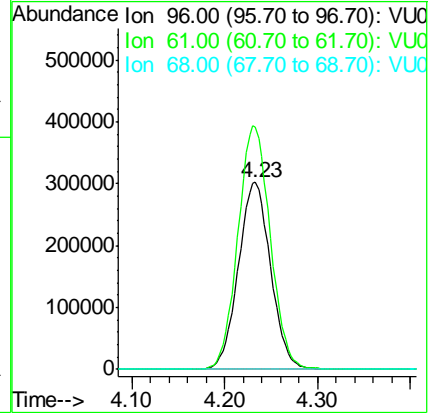
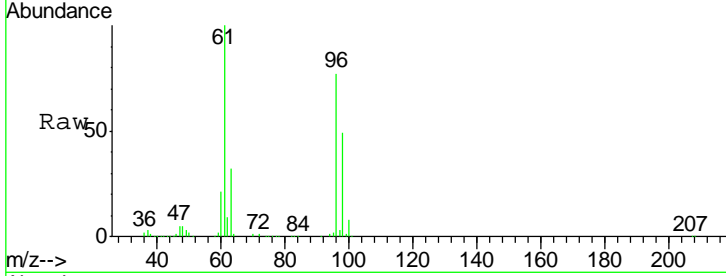
Tgt Ion	Resp	Lower	Upper
96	100		
61	147.7	103.6	192.4
98	66.4	44.8	83.2





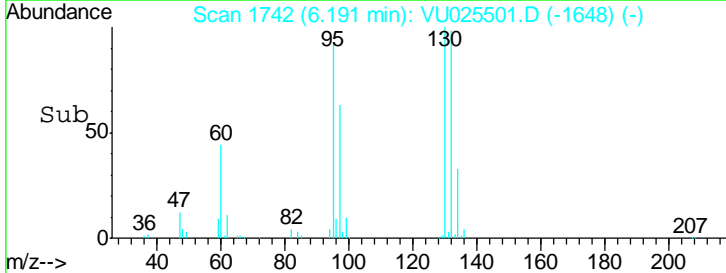
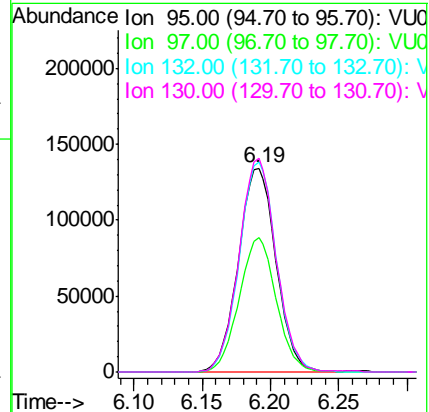
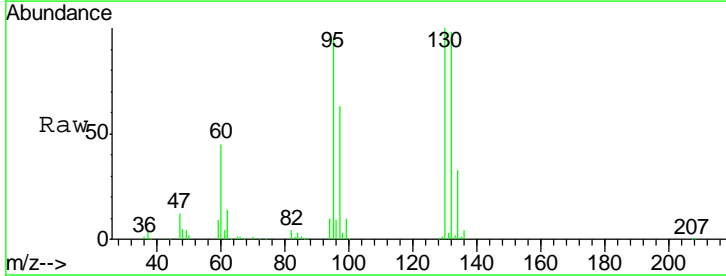
#20
 cis-1,2-Dichloroethene
 Concen: 324.673 ug/L
 RT: 4.23 min Scan# 1133
 Delta R.T. 0.00 min
 Lab File: VU025501.D
 Acq: 18 Jul 2018 16:47

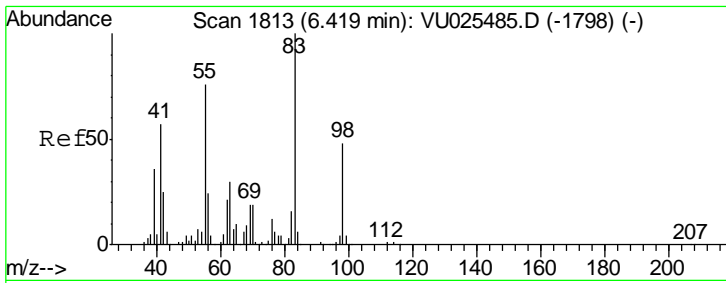
Tgt Ion	Resp	Lower	Upper
96	729185		
Ion Ratio			
96	100		
61	129.3	91.7	170.3
68	0.0	0.0	0.0



#34
 Trichloroethene
 Concen: 127.061 ug/L
 RT: 6.19 min Scan# 1742
 Delta R.T. 0.00 min
 Lab File: VU025501.D
 Acq: 18 Jul 2018 16:47

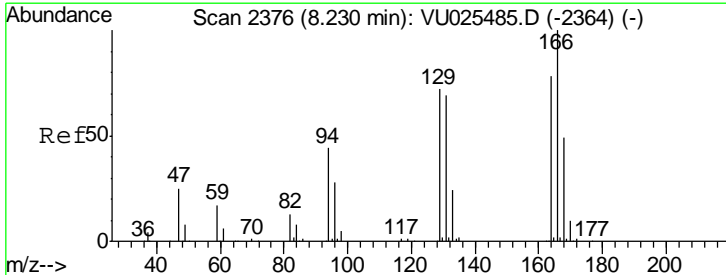
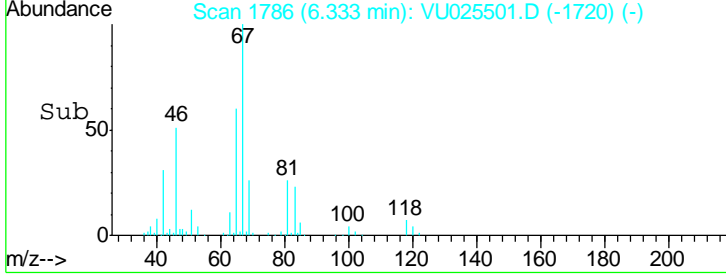
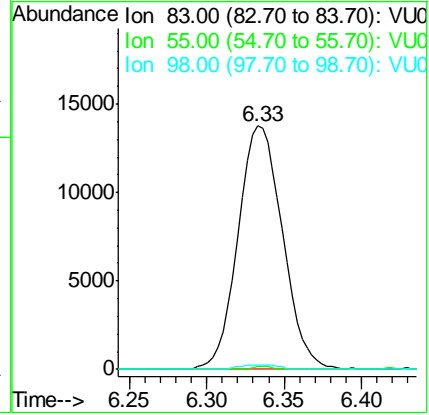
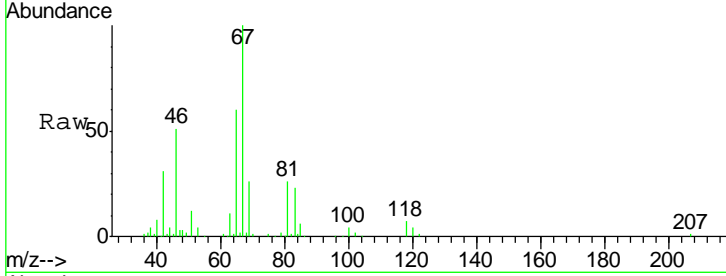
Tgt Ion	Resp	Lower	Upper
95	257709		
Ion Ratio			
95	100		
97	65.8	45.9	85.3
132	102.9	68.2	126.6
130	104.6	71.8	133.4





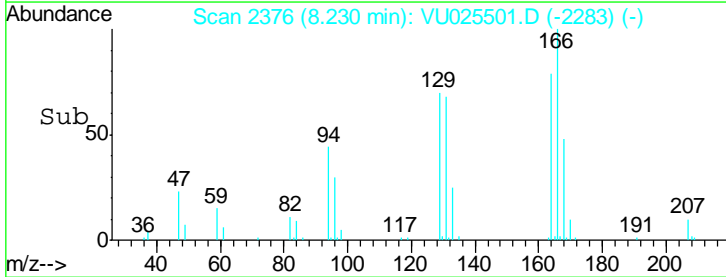
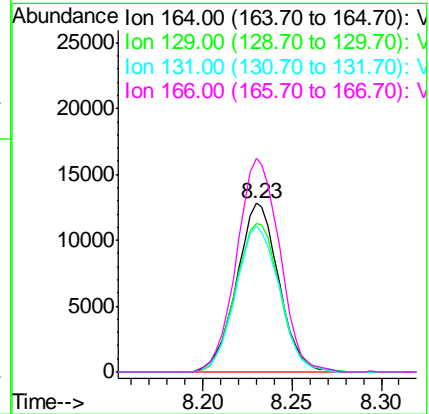
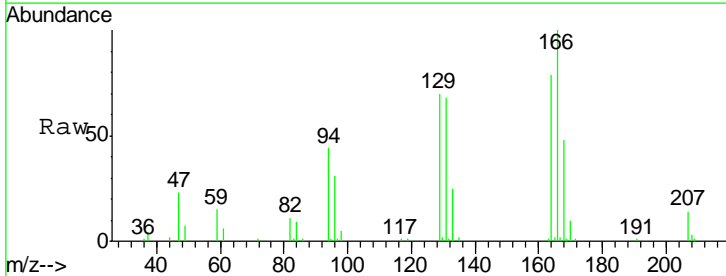
#35
 Methylcyclohexane
 Concen: 8.925 ug/L
 RT: 6.33 min Scan# 1786
 Delta R.T. -0.09 min
 Lab File: VU025501.D
 Acq: 18 Jul 2018 16:47

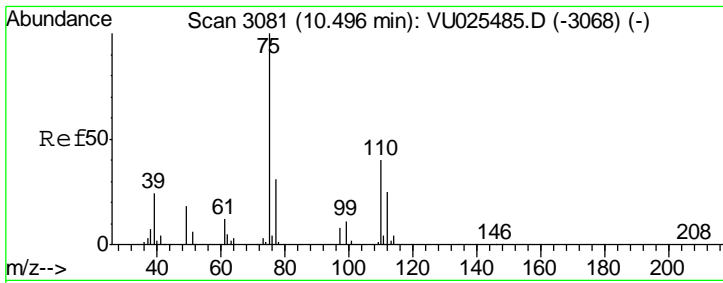
Tgt Ion	Resp	Lower	Upper
83	27484		
55	0.5	61.8	92.8#
98	1.6	38.7	58.1#



#46
 Tetrachloroethene
 Concen: 12.443 ug/L
 RT: 8.23 min Scan# 2376
 Delta R.T. 0.00 min
 Lab File: VU025501.D
 Acq: 18 Jul 2018 16:47

Tgt Ion	Resp	Lower	Upper
164	21053		
129	88.1	66.5	123.5
131	86.1	63.7	118.3
166	126.6	90.8	168.6





#59
 1,2,3-Trichloropropane
 Concen: 4.595 ug/L
 RT: 11.48 min Scan# 3388
 Delta R.T. 0.99 min
 Lab File: VU025501.D
 Acq: 18 Jul 2018 16:47

Tgt Ion	Resp	Lower	Upper
75	12916		
75	100		
77	42.3	26.2	39.2#

