

Data Path : Z:\voasrv\HPCHEM1\MSVOA\_U\Data\VU071824\  
 Data File : VU060029.D  
 Acq On : 18 Jul 2024 19:59  
 Operator : MD/SY  
 Sample : P3217-18  
 Misc : 25.0mL/MSVOA\_U/WATER  
 ALS Vial : 23 Sample Multiplier: 1

Instrument :  
 MSVOA\_U  
 ClientSampleId :

Quant Time: Jul 19 01:38:01 2024  
 Quant Method : Z:\voasrv\HPCHEM1\MSVOA\_U\Method\SFAMUTR071824WMA.M  
 Quant Title : TRACE VOA SFAM1.0  
 QLast Update : Fri Jul 19 01:30:22 2024  
 Response via : Initial Calibration

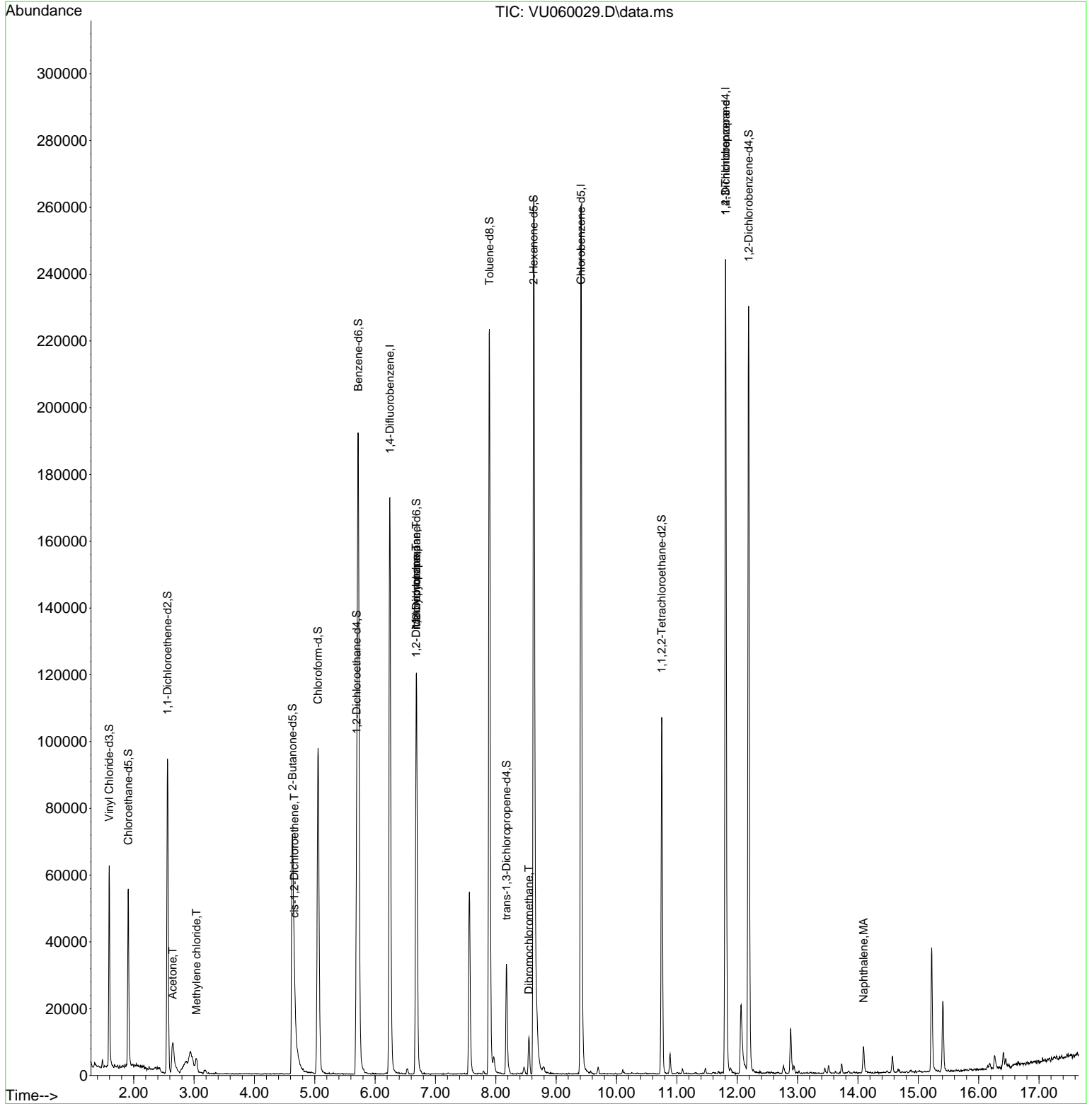
Compound	R.T.	QI on	Response	Conc	Units	Dev(Min)
<b>Internal Standards</b>						
1) 1,4-Difluorobenzene	6.245	114	152987	5.000	ug/L	0.00
28) Chlorobenzene-d5	9.412	117	156212	5.000	ug/L	0.00
58) 1,4-Dichlorobenzene-d4	11.807	152	72350	5.000	ug/L	0.00
<b>System Monitoring Compounds</b>						
4) Vinyl Chloride-d3	1.595	65	44411	4.172	ug/L	0.00
Spiked Amount	5.000	Range 40 - 130	Recovery	=	83.400%	
7) Chloroethane-d5	1.911	69	41750	4.222	ug/L	0.00
Spiked Amount	5.000	Range 65 - 130	Recovery	=	84.400%	
11) 1,1-Dichloroethene-d2	2.560	65	17948	4.319	ug/L	0.00
Spiked Amount	5.000	Range 60 - 125	Recovery	=	86.400%	
20) 2-Butanone-d5	4.631	46	130721	52.529	ug/L	0.00
Spiked Amount	50.000	Range 40 - 130	Recovery	=	105.060%	
24) Chloroform-d	5.055	84	95638	4.275	ug/L	0.00
Spiked Amount	5.000	Range 70 - 125	Recovery	=	85.600%	
26) 1,2-Dichloroethane-d4	5.695	65	48285	4.635	ug/L	0.00
Spiked Amount	5.000	Range 70 - 130	Recovery	=	92.800%	
32) Benzene-d6	5.721	84	192161	4.591	ug/L	0.00
Spiked Amount	5.000	Range 70 - 125	Recovery	=	91.800%	
36) 1,2-Dichloropropane-d6	6.685	67	62885	4.715	ug/L	0.00
Spiked Amount	5.000	Range 60 - 140	Recovery	=	94.400%	
41) Toluene-d8	7.894	98	162606	4.300	ug/L	0.00
Spiked Amount	5.000	Range 70 - 130	Recovery	=	86.000%	
43) trans-1,3-Dichloropropene	8.177	79	20923	4.609	ug/L	0.00
Spiked Amount	5.000	Range 55 - 130	Recovery	=	92.200%	
46) 2-Hexanone-d5	8.627	63	100810	50.041	ug/L	0.00
Spiked Amount	50.000	Range 45 - 130	Recovery	=	100.080%	
56) 1,1,2,2-Tetrachloroethene	10.749	84	56055	4.723	ug/L	0.00
Spiked Amount	5.000	Range 65 - 120	Recovery	=	94.400%	
66) 1,2-Dichlorobenzene-d4	12.190	152	66876	5.121	ug/L	0.00
Spiked Amount	5.000	Range 80 - 120	Recovery	=	102.400%	
<b>Target Compounds</b>						
13) Acetone	2.647	43	18998	11.541	ug/L	96
16) Methylene chloride	3.039	84	2063	0.144	ug/L	84
22) cis-1,2-Dichloroethene	4.663	96	2135	0.157	ug/L	85
35) Methylcyclohexane	6.685	83	13519	0.754	ug/L #	21
37) 1,2-Dichloropropane	6.679	63	6499	0.466	ug/L #	88
49) Dibromochloromethane	8.547	129	2663	0.226	ug/L #	10
61) 1,2,3-Trichloropropane	11.807	75	8859	1.161	ug/L #	63
71) Naphthalene	14.093	128	8345	0.403	ug/L	100

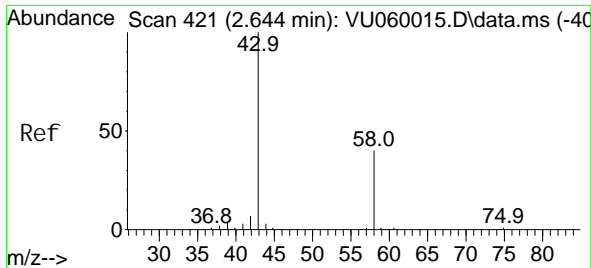
(#) = qualifier out of range (m) = manual integration (+) = signals summed

Data Path : Z:\voasrv\HPCHEM1\MSVOA\_U\Data\VU071824\  
 Data File : VU060029.D  
 Acq On : 18 Jul 2024 19:59  
 Operator : MD/SY  
 Sample : P3217-18  
 Misc : 25.0mL/MSVOA\_U/WATER  
 ALS Vial : 23 Sample Multiplier: 1

Instrument :  
 MSVOA\_U  
 ClientSampleId :

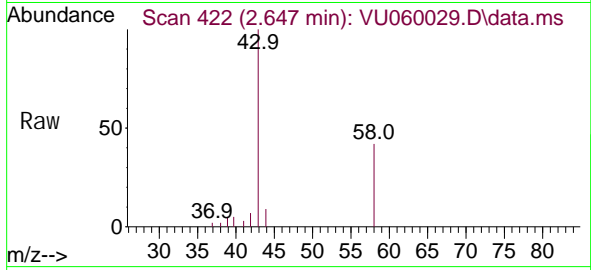
Quant Time: Jul 19 01:38:01 2024  
 Quant Method : Z:\voasrv\HPCHEM1\MSVOA\_U\Method\SFAMUTR071824WMA.M  
 Quant Title : TRACE VOA SFAM1.0  
 QLast Update : Fri Jul 19 01:30:22 2024  
 Response via : Initial Calibration



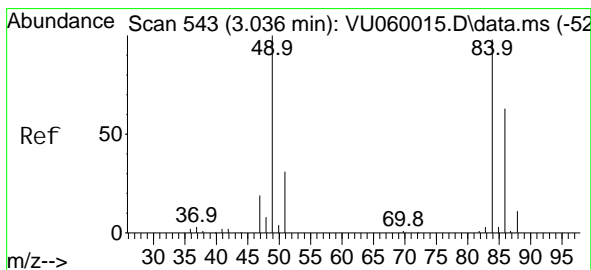
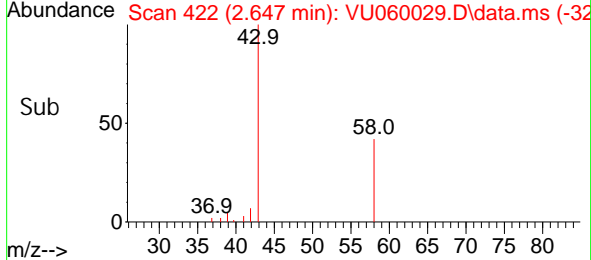
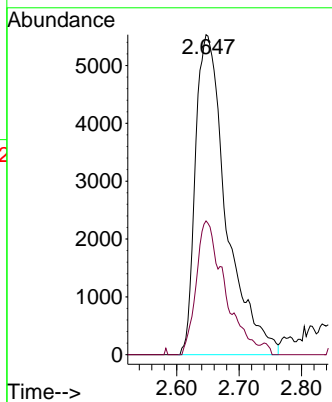


#13  
 Acetone  
 Concen: 11.541 ug/L  
 RT: 2.647 min Scan# 41  
 Delta R.T. 0.003 min  
 Lab File: VU060029.D  
 Acq: 18 Jul 2024 19:59

Instrument :  
 MSVOA\_U  
 ClientSampleId :

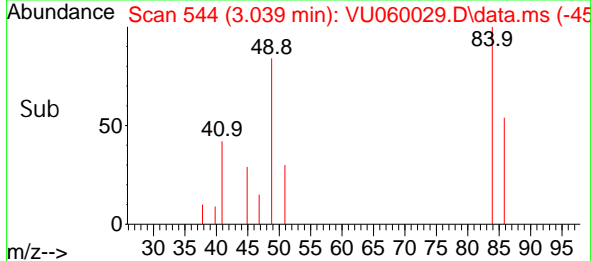
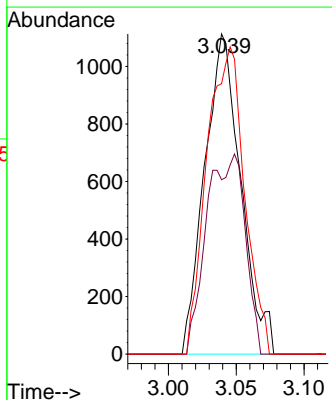
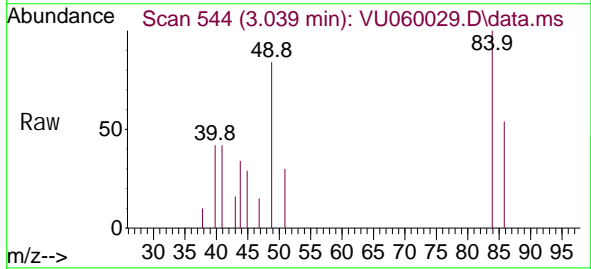


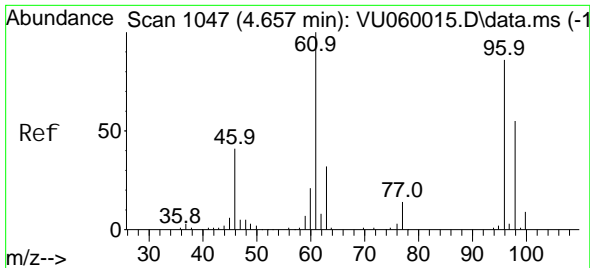
Tgt Ion: 43 Resp: 18998  
 Ion Ratio Lower Upper  
 43 100  
 58 38.8 0.0 82.2



#16  
 Methylene chloride  
 Concen: 0.144 ug/L  
 RT: 3.039 min Scan# 544  
 Delta R.T. 0.003 min  
 Lab File: VU060029.D  
 Acq: 18 Jul 2024 19:59

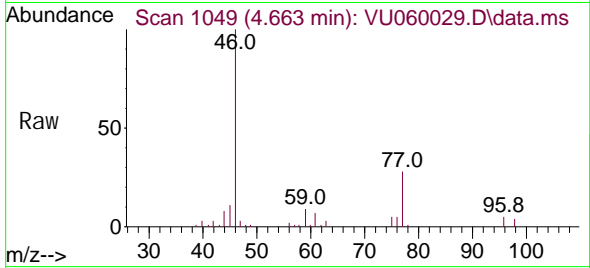
Tgt Ion: 84 Resp: 2063  
 Ion Ratio Lower Upper  
 84 100  
 86 54.4 44.4 82.5  
 49 84.5 72.0 133.6



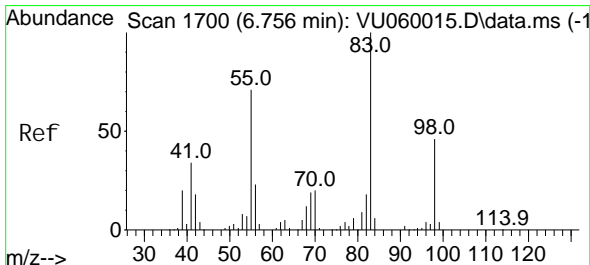
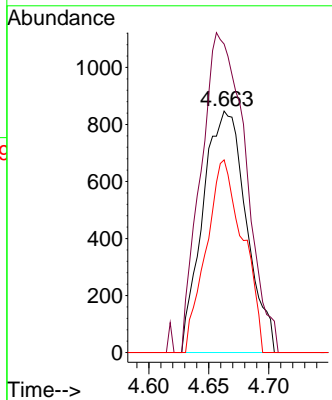
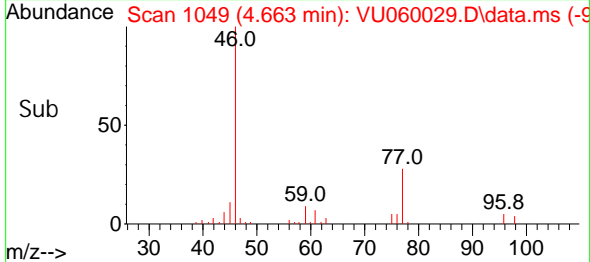


#22  
 cis-1,2-Dichloroethene  
 Concentration: 0.157 ug/L  
 RT: 4.663 min Scan# 1049  
 Delta R.T.: 0.006 min  
 Lab File: VU060029.D  
 Acq: 18 Jul 2024 19:59

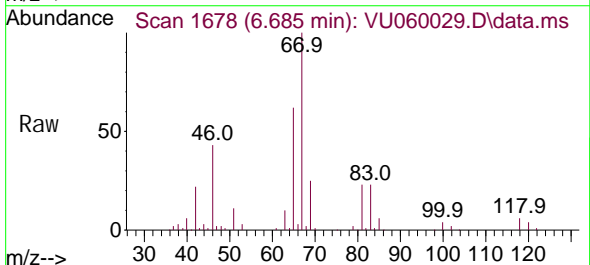
Instrument : MSVOA\_U  
 ClientSampleId :



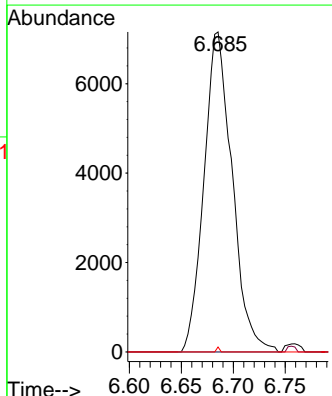
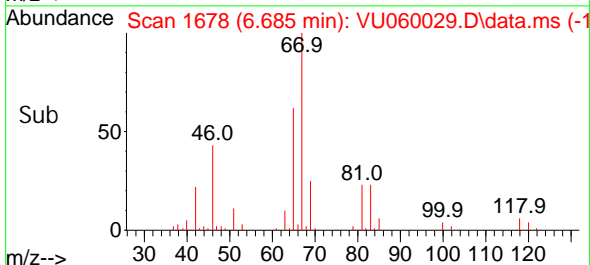
Tgt Ion	Resp	Lower	Upper
96	2135		
96	100		
61	127.7	80.2	148.9
98	79.8	44.7	83.1

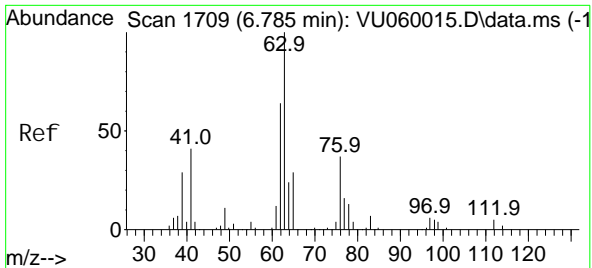


#35  
 Methylcyclohexane  
 Concentration: 0.754 ug/L  
 RT: 6.685 min Scan# 1678  
 Delta R.T.: -0.071 min  
 Lab File: VU060029.D  
 Acq: 18 Jul 2024 19:59



Tgt Ion	Resp	Lower	Upper
83	13519		
83	100		
55	0.5	56.7	85.1#
98	0.2	36.6	55.0#

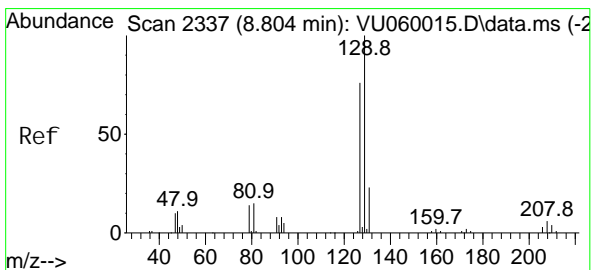
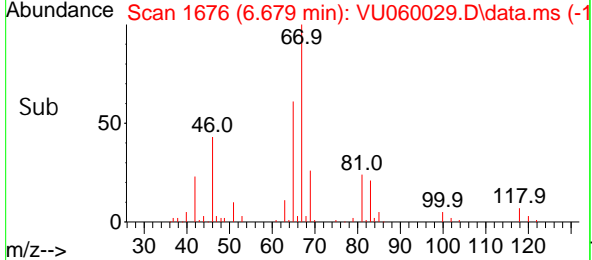
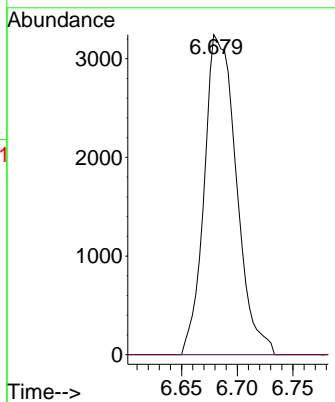
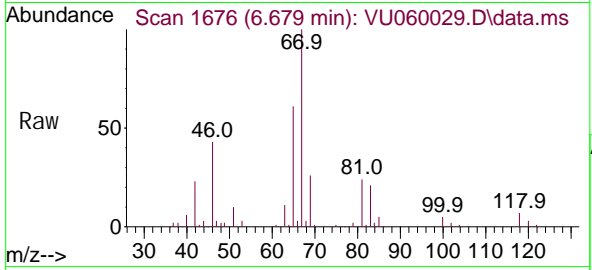




#37  
 1, 2-Di chl oropropane  
 Concen: 0.466 ug/L  
 RT: 6.679 min Scan# 10  
 Del ta R. T. -0.106 min  
 Lab File: VU060029.D  
 Acq: 18 Jul 2024 19:59

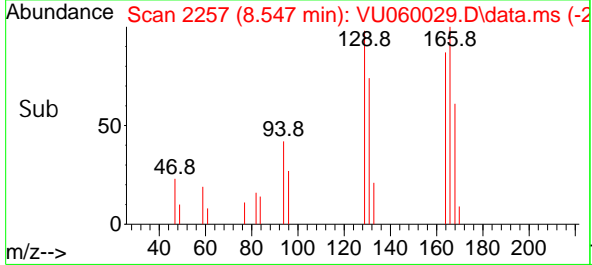
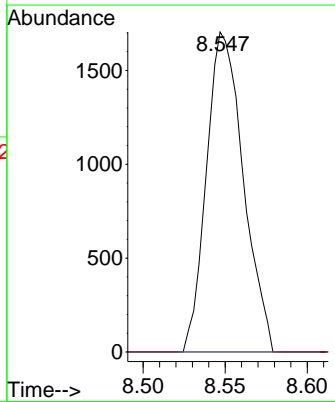
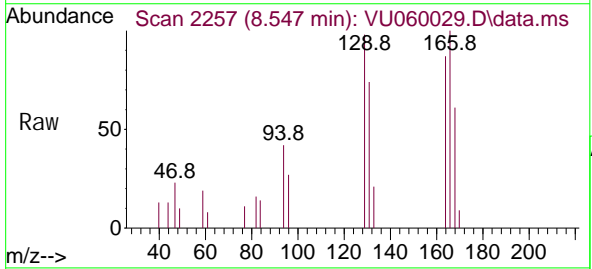
Instrument : MSVOA\_U  
 ClientSampleId :

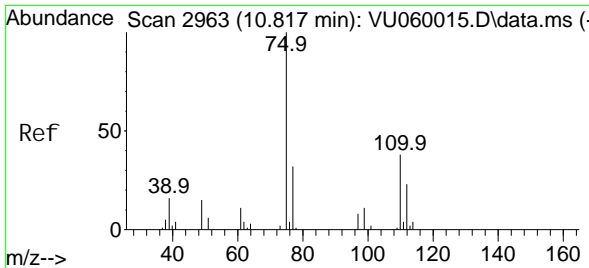
Tgt Ion: 63 Resp: 6499  
 Ion Ratio Lower Upper  
 63 100  
 112 0.0 3.3 4.9#



#49  
 Di bromochl oromethane  
 Concen: 0.226 ug/L  
 RT: 8.547 min Scan# 2257  
 Del ta R. T. -0.257 min  
 Lab File: VU060029.D  
 Acq: 18 Jul 2024 19:59

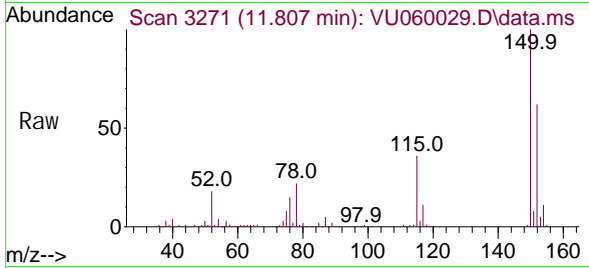
Tgt Ion: 129 Resp: 2663  
 Ion Ratio Lower Upper  
 129 100  
 127 0.0 54.6 101.4#



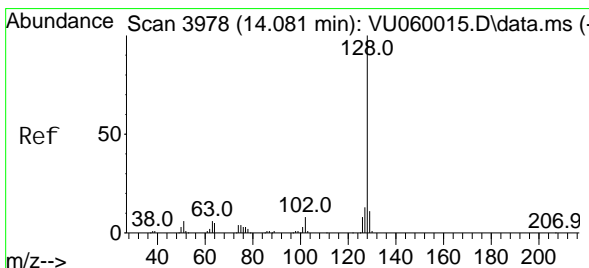
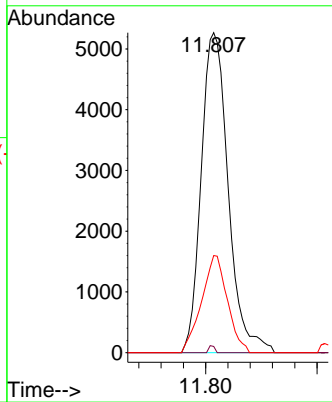
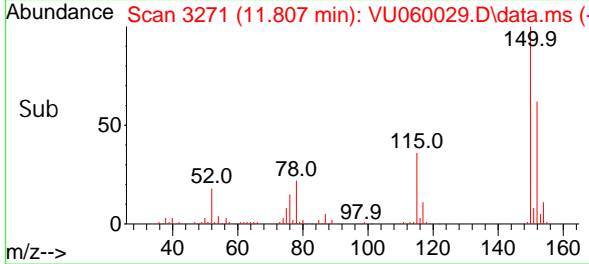


#61  
 1, 2, 3-Tri chloropropane  
 Concen: 1.161 ug/L  
 RT: 11.807 min Scan# 31  
 Delta R.T. 0.990 min  
 Lab File: VU060029.D  
 Acq: 18 Jul 2024 19:59

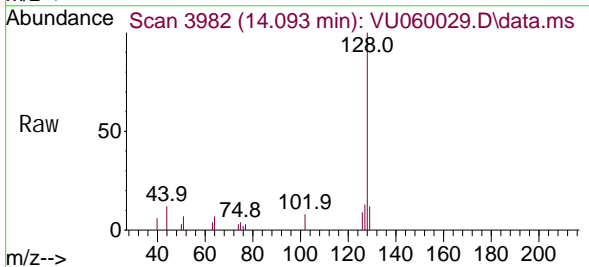
Instrument :  
 MSVOA\_U  
 ClientSampleId :



Tgt Ion: 75 Resp: 8859  
 Ion Ratio Lower Upper  
 75 100  
 110 0.5 30.8 46.2#  
 77 29.0 26.2 39.2



#71  
 Naphthalene  
 Concen: 0.403 ug/L  
 RT: 14.093 min Scan# 3982  
 Delta R.T. 0.013 min  
 Lab File: VU060029.D  
 Acq: 18 Jul 2024 19:59



Tgt Ion: 128 Resp: 8345  
 Ion Ratio Lower Upper  
 128 100  
 129 10.4 8.2 12.4  
 127 13.4 10.6 16.0

