

Data Path : Z:\voasrv\HPCHEM1\MSVOA_U\Data\VU071923\
 Data File : VU054824.D
 Acq On : 19 Jul 2023 16:57
 Operator : MD/SY
 Sample : VSTDCCC050EC
 Misc : 5.0mL/MSVOA_U/WATER
 ALS Vial : 12 Sample Multiplier: 1

Instrument :
 MSVOA_U
 ClientSampleId :
 VSTD050107

Quant Time: Jul 20 02:35:54 2023
 Quant Method : Z:\voasrv\HPCHEM1\MSVOA_U\Method\SFAMULM071723WMA.M
 Quant Title : VOC Analysis
 QLast Update : Thu Jul 20 02:33:27 2023
 Response via : Initial Calibration

Compound	R.T.	QIon	Response	Conc	Units	Dev(Min)
Internal Standards						
1) 1,4-Difluorobenzene	6.245	114	135873	50.000	ug/L	0.00
28) Chlorobenzene-d5	9.412	117	130710	50.000	ug/L	0.00
58) 1,4-Dichlorobenzene-d4	11.807	152	71931	50.000	ug/L	0.00
System Monitoring Compounds						
4) Vinyl Chloride-d3	1.599	65	42496	40.466	ug/L	0.00
Spiked Amount	50.000	Range 60 - 135	Recovery =	80.940%		
7) Chloroethane-d5	1.888	69	46985	44.726	ug/L	0.00
Spiked Amount	50.000	Range 70 - 130	Recovery =	89.460%		
11) 1,1-Dichloroethene-d2	2.560	63	61247	40.658	ug/L	0.00
Spiked Amount	50.000	Range 60 - 125	Recovery =	81.320%		
21) 2-Butanone-d5	4.618	46	69288	102.647	ug/L	0.00
Spiked Amount	100.000	Range 40 - 130	Recovery =	102.650%		
24) Chloroform-d	5.058	84	78920	48.277	ug/L	0.00
Spiked Amount	50.000	Range 70 - 125	Recovery =	96.560%		
26) 1,2-Dichloroethane-d4	5.695	65	47693	48.721	ug/L	0.00
Spiked Amount	50.000	Range 70 - 125	Recovery =	97.440%		
32) Benzene-d6	5.721	84	143620	46.127	ug/L	0.00
Spiked Amount	50.000	Range 70 - 125	Recovery =	92.260%		
36) 1,2-Dichloropropane-d6	6.685	67	49889	47.586	ug/L	0.00
Spiked Amount	50.000	Range 70 - 120	Recovery =	95.180%		
41) Toluene-d8	7.894	98	137650	46.395	ug/L	0.00
Spiked Amount	50.000	Range 80 - 120	Recovery =	92.780%		
43) trans-1,3-Dichloroprop...	8.174	79	20936	39.037	ug/L	0.00
Spiked Amount	50.000	Range 60 - 125	Recovery =	78.080%		
47) 2-Hexanone-d5	8.631	63	48388	97.639	ug/L	0.00
Spiked Amount	100.000	Range 45 - 130	Recovery =	97.640%		
56) 1,1,2,2-Tetrachloroeth...	10.753	84	93285	48.443	ug/L	0.00
Spiked Amount	50.000	Range 65 - 120	Recovery =	96.880%		
66) 1,2-Dichlorobenzene-d4	12.190	152	60459	48.913	ug/L	0.00
Spiked Amount	50.000	Range 80 - 120	Recovery =	97.820%		
Target Compounds						
2) Dichlorodifluoromethane	1.380	85	38472	37.466	ug/L	97
3) Chloromethane	1.518	50	43179	36.872	ug/L	96
5) Vinyl chloride	1.602	62	64575	42.411	ug/L	100
6) Bromomethane	1.827	94	76802	82.874	ug/L	100
8) Chloroethane	1.911	64	48145	45.709	ug/L	98
9) Trichlorofluoromethane	2.123	101	122008	50.065	ug/L	99
10) 1,1,2-Trichloro-1,2,2-...	2.570	101	40742	45.319	ug/L	99
12) 1,1-Dichloroethene	2.570	96	37110	43.895	ug/L	94
13) Acetone	2.621	43	46853	82.524	ug/L	99
14) Carbon disulfide	2.785	76	76779	31.102	ug/L	99
15) Methyl Acetate	2.943	43	50918	53.768	ug/L	99
16) Methylene chloride	3.039	84	48290	47.316	ug/L	94
17) trans-1,2-Dichloroethene	3.345	96	37848	43.252	ug/L	95
18) Methyl tert-butyl Ether	3.357	73	161383	53.290	ug/L	100
19) 1,1-Dichloroethane	3.859	63	82596	49.467	ug/L	96
20) cis-1,2-Dichloroethene	4.660	96	51731	49.738	ug/L	99
22) 2-Butanone	4.695	43	79499	101.424	ug/L	100
23) Bromochloromethane	4.968	128	26408	49.909	ug/L	95
25) Chloroform	5.081	83	91738	52.394	ug/L	99

Data Path : Z:\voasrv\HPCHEM1\MSVOA_U\Data\VU071923\
 Data File : VU054824.D
 Acq On : 19 Jul 2023 16:57
 Operator : MD/SY
 Sample : VSTDCCC050EC
 Misc : 5.0mL/MSVOA_U/WATER
 ALS Vial : 12 Sample Multiplier: 1

Instrument :
 MSVOA_U
 ClientSampleId :
 VSTD050107

Quant Time: Jul 20 02:35:54 2023
 Quant Method : Z:\voasrv\HPCHEM1\MSVOA_U\Method\SFAMULM071723WMA.M
 Quant Title : VOC Analysis
 QLast Update : Thu Jul 20 02:33:27 2023
 Response via : Initial Calibration

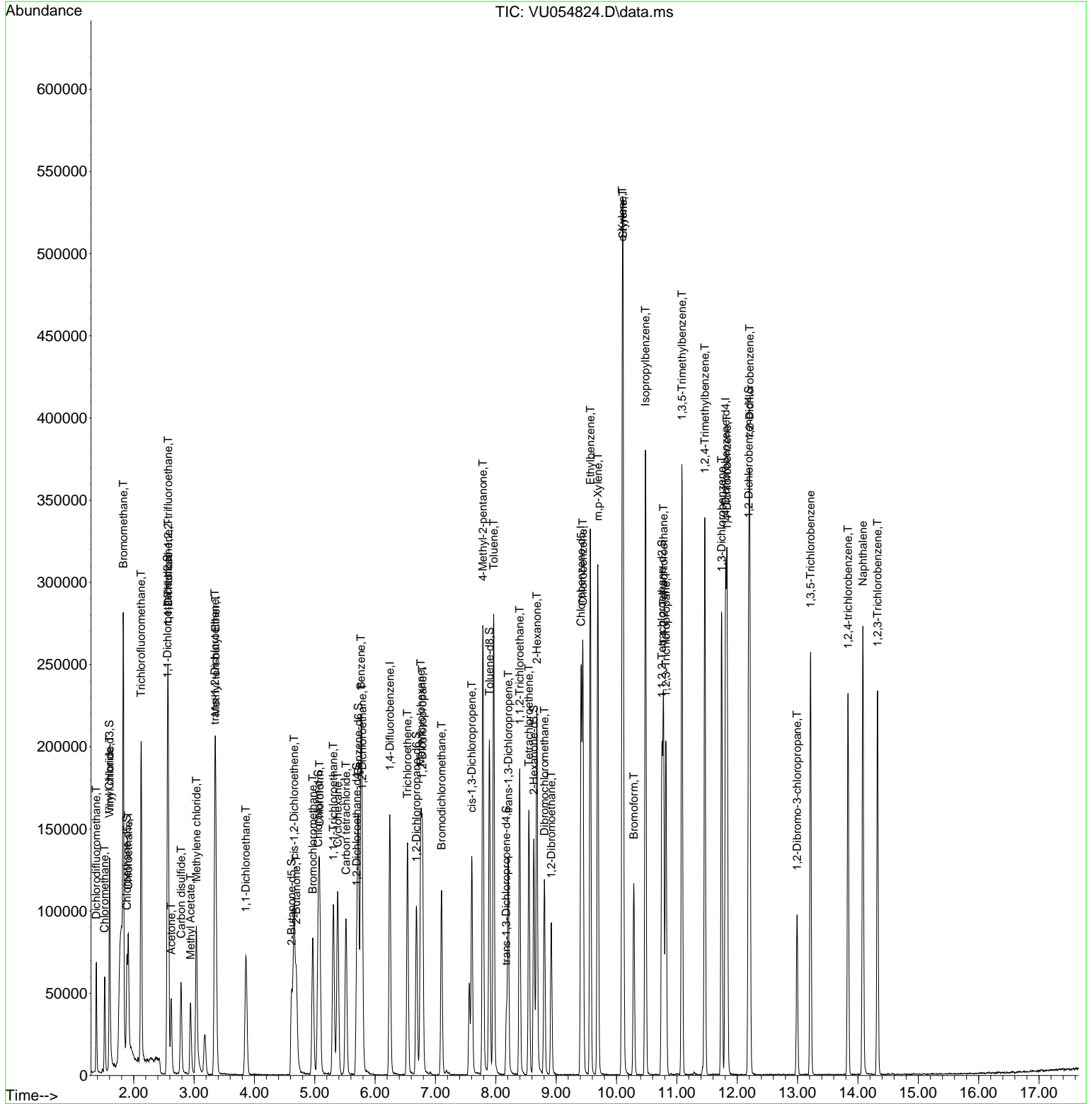
Compound	R.T.	QIon	Response	Conc	Units	Dev(Min)
27) 1,2-Dichloroethane	5.788	62	68253	51.329	ug/L	100
29) Cyclohexane	5.380	56	55486	38.605	ug/L	96
30) 1,1,1-Trichloroethane	5.309	97	72813	50.195	ug/L	99
31) Carbon tetrachloride	5.518	117	61136	48.803	ug/L	100
33) Benzene	5.766	78	180927	48.311	ug/L	100
34) Trichloroethene	6.537	95	45549	47.781	ug/L	98
35) Methylcyclohexane	6.759	83	64399	41.336	ug/L	96
37) 1,2-Dichloropropane	6.785	63	54363	52.781	ug/L	100
38) Bromodichloromethane	7.103	83	70565	53.401	ug/L	99
39) cis-1,3-Dichloropropene	7.602	75	75799	44.621	ug/L	93
40) 4-Methyl-2-pentanone	7.785	43	171990	109.054	ug/L	99
42) Toluene	7.965	91	207528	49.521	ug/L	100
44) trans-1,3-Dichloropropene	8.206	75	71136	44.571	ug/L	97
45) 1,1,2-Trichloroethane	8.396	97	57826	55.067	ug/L	99
46) Tetrachloroethene	8.547	164	34311	46.947	ug/L	98
48) 2-Hexanone	8.679	43	135923	104.034	ug/L	98
49) Dibromochloromethane	8.804	129	56710	52.431	ug/L	97
50) 1,2-Dibromoethane	8.920	107	59680	52.800	ug/L	93
51) Chlorobenzene	9.444	112	138262	50.714	ug/L	99
52) Ethylbenzene	9.566	91	236318	48.775	ug/L	94
53) m,p-Xylene	9.692	106	89504	48.520	ug/L	95
54) o-Xylene	10.097	106	93630	49.964	ug/L	96
55) Styrene	10.110	104	161103	49.361	ug/L	96
57) 1,1,2,2-Tetrachloroethane	10.778	83	111942	53.994	ug/L	99
59) Bromoform	10.286	173	49145	54.622	ug/L #	99
60) 1,2,3-Trichloropropane	10.817	75	78086	55.635	ug/L	98
61) Isopropylbenzene	10.479	105	249202	52.435	ug/L	99
62) 1,3,5-Trimethylbenzene	11.084	105	197509	50.462	ug/L	98
63) 1,2,4-Trimethylbenzene	11.463	105	181174	46.699	ug/L	99
64) 1,3-Dichlorobenzene	11.743	146	112944	51.241	ug/L	95
65) 1,4-Dichlorobenzene	11.833	146	112478	50.664	ug/L	93
67) 1,2-Dichlorobenzene	12.206	146	117646	53.133	ug/L	92
68) 1,2-Dibromo-3-chloropr...	12.991	75	20228	53.922	ug/L	88
69) 1,3,5-Trichlorobenzene	13.216	180	75591	51.160	ug/L	98
70) 1,2,4-trichlorobenzene	13.836	180	67590	52.987	ug/L	99
71) Naphthalene	14.084	128	216888	51.804	ug/L	100
72) 1,2,3-Trichlorobenzene	14.325	180	66668	53.671	ug/L	98

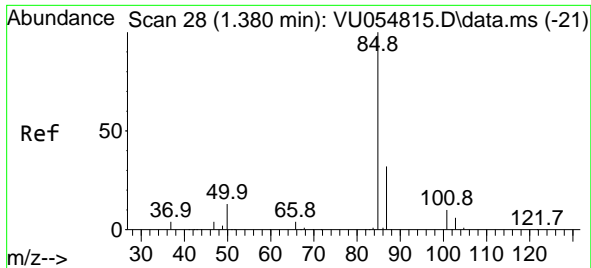
(#) = qualifier out of range (m) = manual integration (+) = signals summed

Data Path : Z:\voasrv\HPCHEM1\MSVOA_U\Data\VU071923\
Data File : VU054824.D
Acq On : 19 Jul 2023 16:57
Operator : MD/SY
Sample : VSTDCCC050EC
Misc : 5.0mL/MSVOA_U/WATER
ALS Vial : 12 Sample Multiplier: 1

Instrument :
MSVOA_U
ClientSampleId :
VSTD050107

Quant Time: Jul 20 02:35:54 2023
Quant Method : Z:\voasrv\HPCHEM1\MSVOA_U\Method\SFAMULM071723WMA.M
Quant Title : VOC Analysis
QLast Update : Thu Jul 20 02:33:27 2023
Response via : Initial Calibration

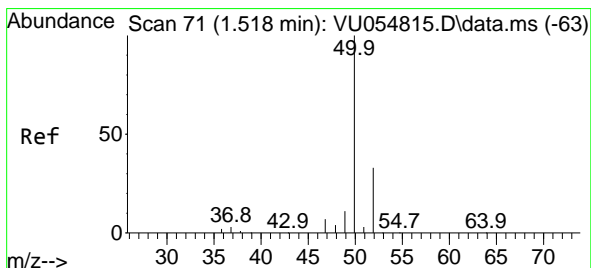
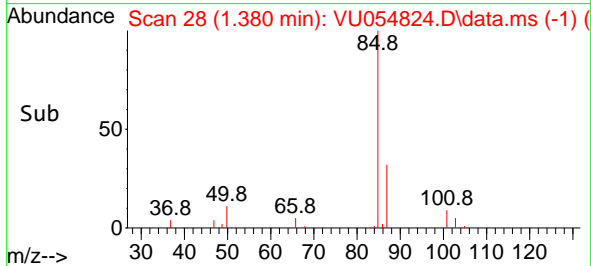
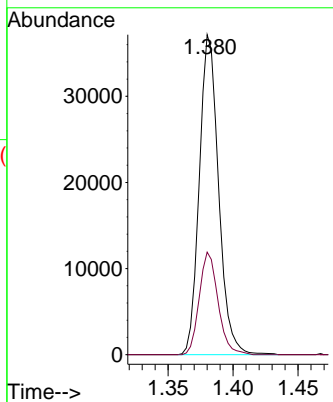
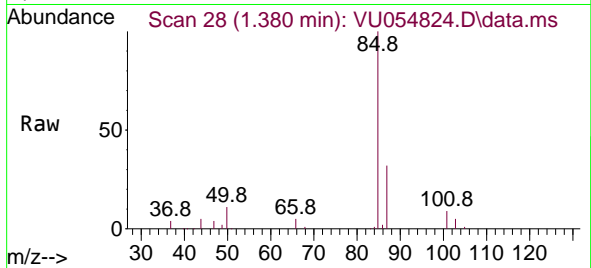




#2
 Dichlorodifluoromethane
 Concen: 37.466 ug/L
 RT: 1.380 min Scan# 21
 Delta R.T. 0.000 min
 Lab File: VU054824.D
 Acq: 19 Jul 2023 16:57

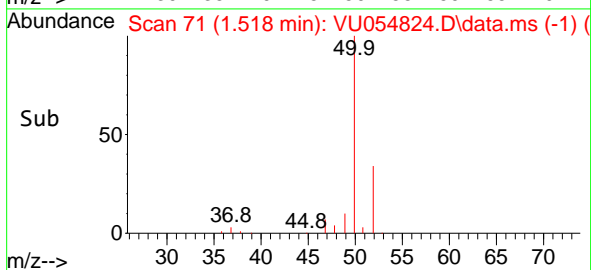
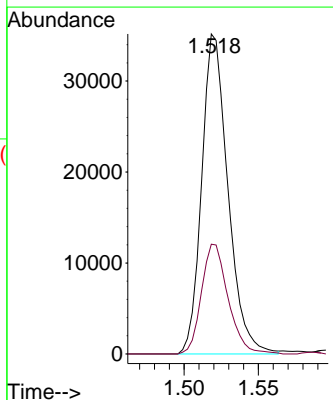
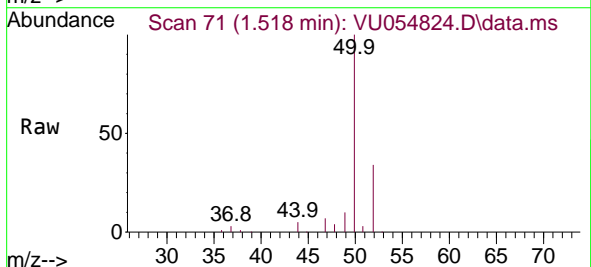
Instrument :
 MSVOA_U
 ClientSampleId :
 VSTD050107

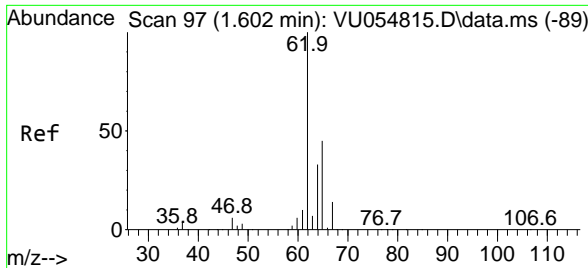
Tgt Ion: 85 Resp: 38472
 Ion Ratio Lower Upper
 85 100
 87 31.2 26.2 39.2



#3
 Chloromethane
 Concen: 36.872 ug/L
 RT: 1.518 min Scan# 71
 Delta R.T. 0.000 min
 Lab File: VU054824.D
 Acq: 19 Jul 2023 16:57

Tgt Ion: 50 Resp: 43179
 Ion Ratio Lower Upper
 50 100
 52 34.3 22.5 41.9

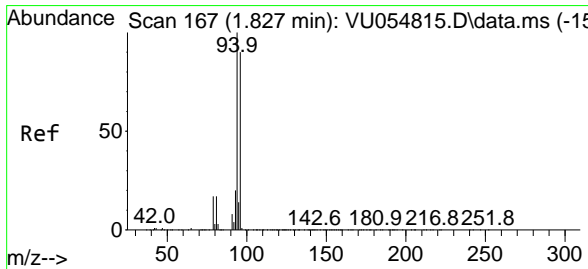
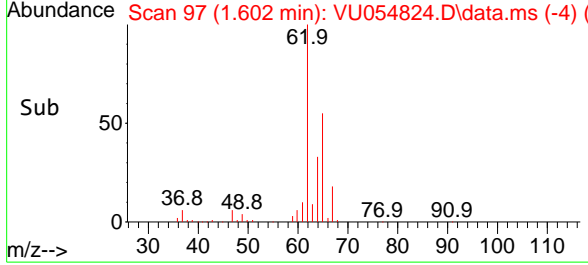
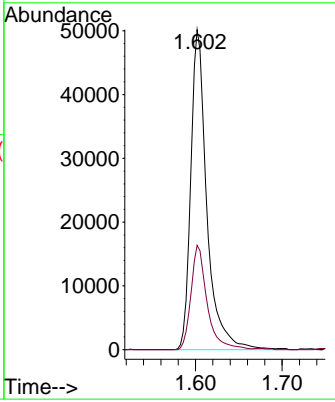
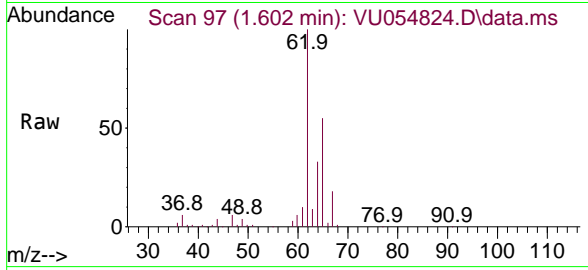




#5
 Vinyl chloride
 Concen: 42.411 ug/L
 RT: 1.602 min Scan# 91
 Delta R.T. 0.000 min
 Lab File: VU054824.D
 Acq: 19 Jul 2023 16:57

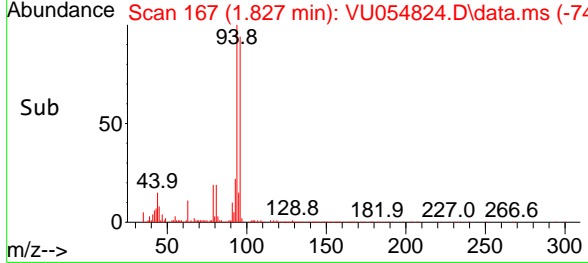
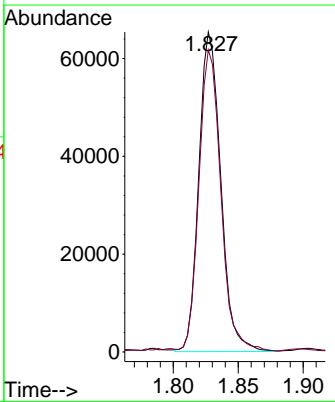
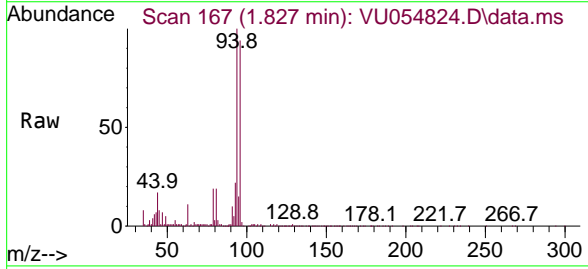
Instrument : MSVOA_U
 ClientSampleId : VSTD050107

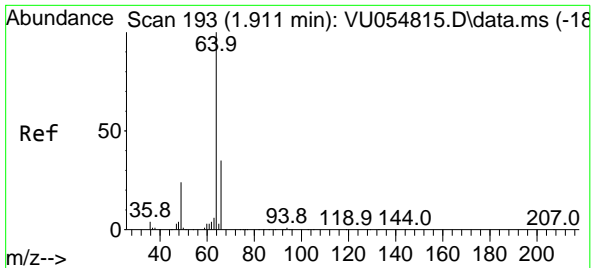
Tgt Ion: 62 Resp: 64575
 Ion Ratio Lower Upper
 62 100
 64 32.6 22.9 42.5



#6
 Bromomethane
 Concen: 82.874 ug/L
 RT: 1.827 min Scan# 167
 Delta R.T. 0.000 min
 Lab File: VU054824.D
 Acq: 19 Jul 2023 16:57

Tgt Ion: 94 Resp: 76802
 Ion Ratio Lower Upper
 94 100
 96 94.4 66.1 122.8

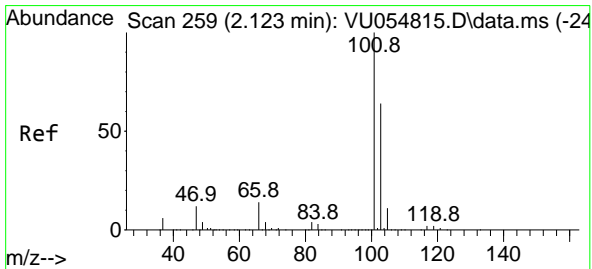
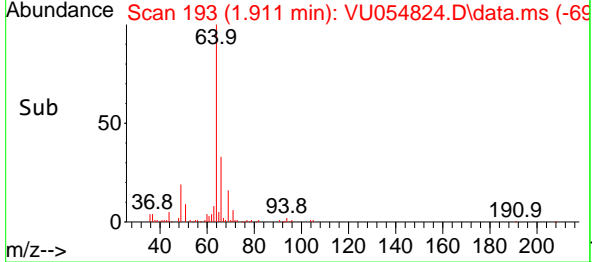
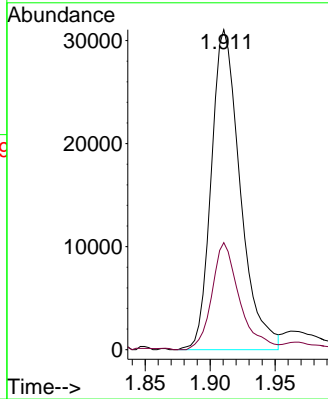
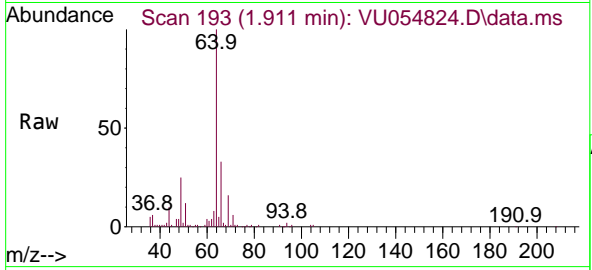




#8
 Chloroethane
 Concen: 45.709 ug/L
 RT: 1.911 min Scan# 193
 Delta R.T. 0.000 min
 Lab File: VU054824.D
 Acq: 19 Jul 2023 16:57

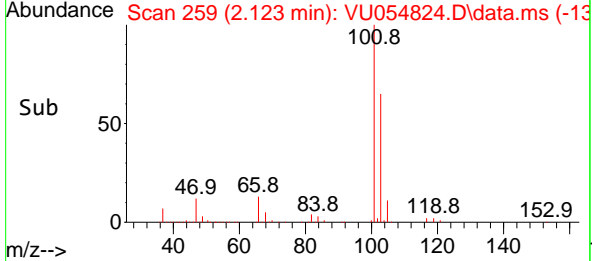
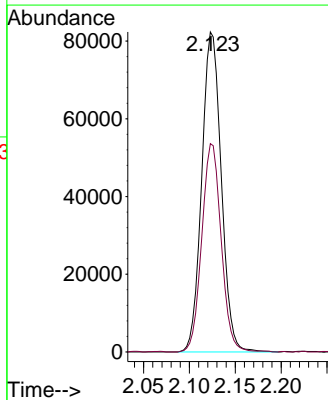
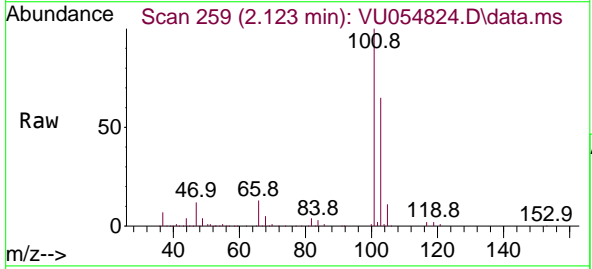
Instrument : MSVOA_U
 ClientSampleId : VSTD050107

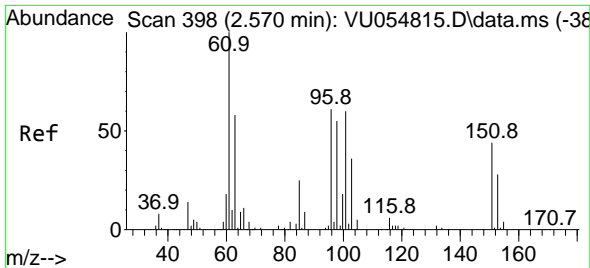
Tgt Ion: 64 Resp: 48145
 Ion Ratio Lower Upper
 64 100
 66 33.4 22.8 42.4



#9
 Trichlorofluoromethane
 Concen: 50.065 ug/L
 RT: 2.123 min Scan# 259
 Delta R.T. 0.000 min
 Lab File: VU054824.D
 Acq: 19 Jul 2023 16:57

Tgt Ion: 101 Resp: 122008
 Ion Ratio Lower Upper
 101 100
 103 64.5 52.2 78.2



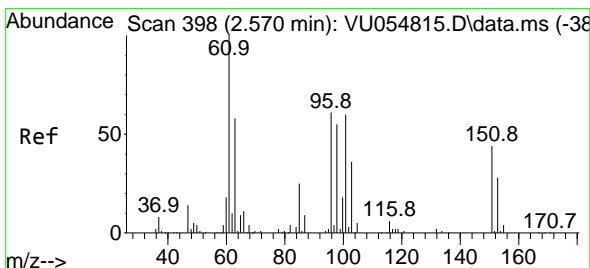
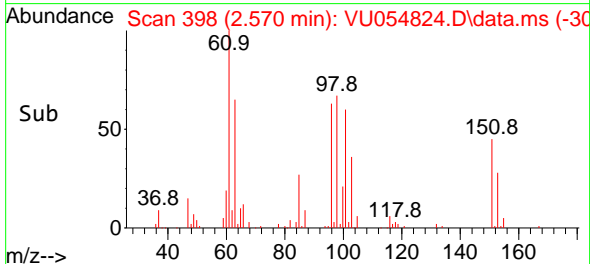
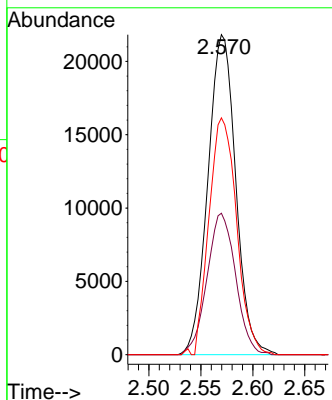
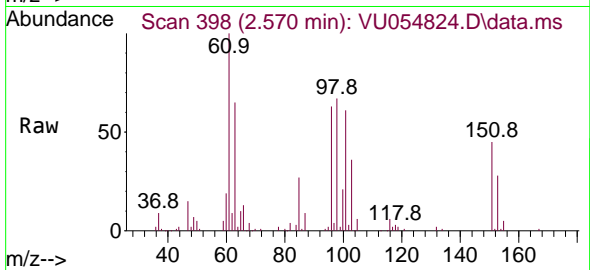


#10
 1,1,2-Trichloro-1,2,2-trifluoroethane
 Concen: 45.319 ug/L
 RT: 2.570 min Scan# 398
 Delta R.T. 0.000 min
 Lab File: VU054824.D
 Acq: 19 Jul 2023 16:57

Instrument :
 MSVOA_U
 ClientSampleId :
 VSTD050107

Tgt Ion:101 Resp: 40742

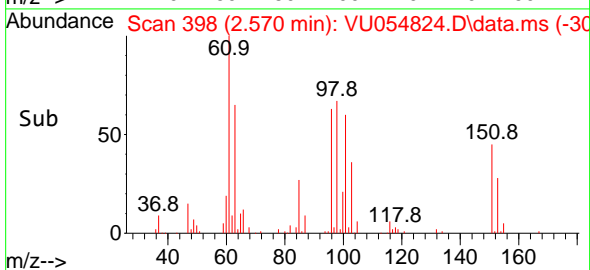
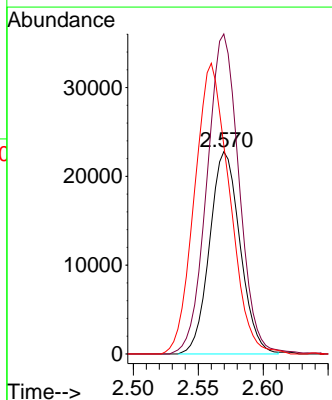
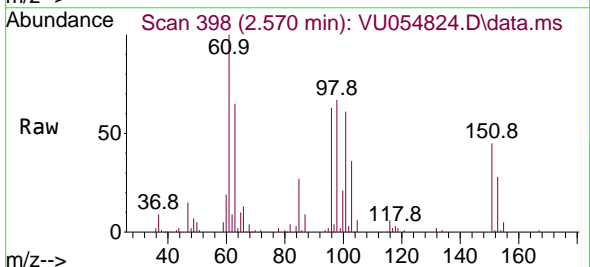
Ion	Ratio	Lower	Upper
101	100		
85	45.2	35.3	52.9
151	73.3	58.2	87.4

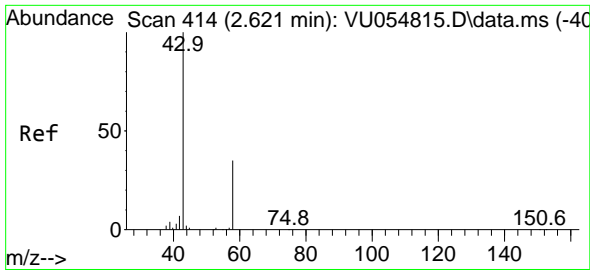


#12
 1,1-Dichloroethene
 Concen: 43.895 ug/L
 RT: 2.570 min Scan# 398
 Delta R.T. 0.000 min
 Lab File: VU054824.D
 Acq: 19 Jul 2023 16:57

Tgt Ion: 96 Resp: 37110

Ion	Ratio	Lower	Upper
96	100		
61	158.2	115.0	213.6
63	103.3	77.6	144.0

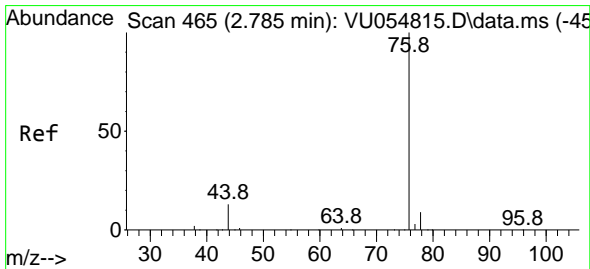
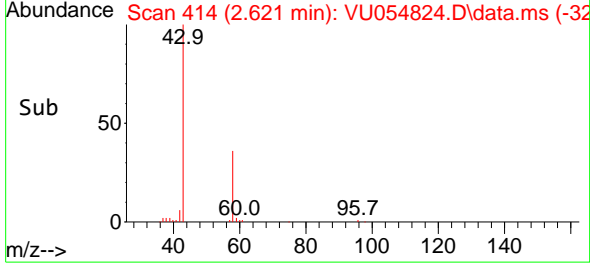
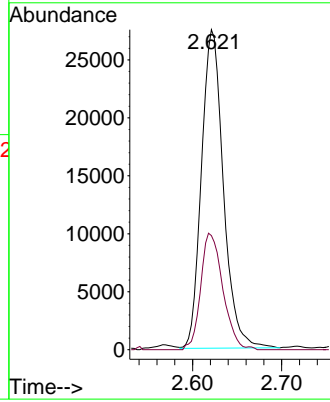
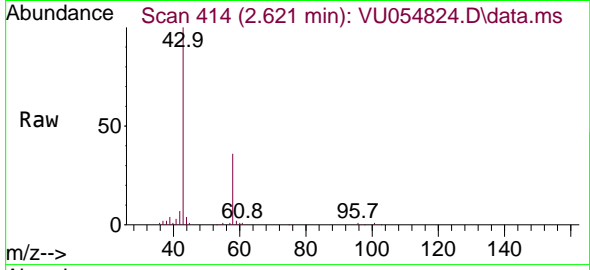




#13
 Acetone
 Concen: 82.524 ug/L
 RT: 2.621 min Scan# 413
 Delta R.T. 0.000 min
 Lab File: VU054824.D
 Acq: 19 Jul 2023 16:57

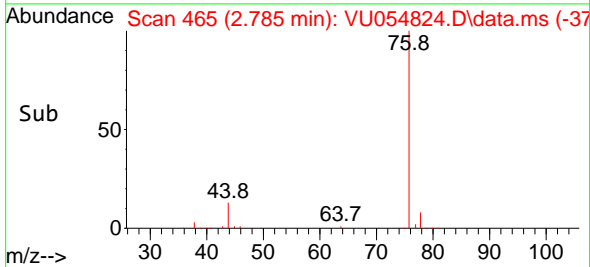
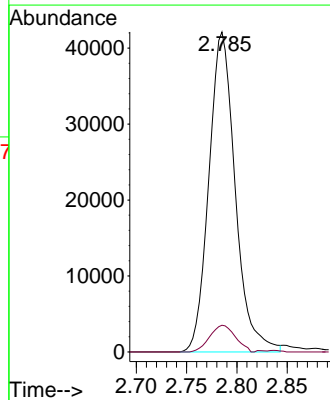
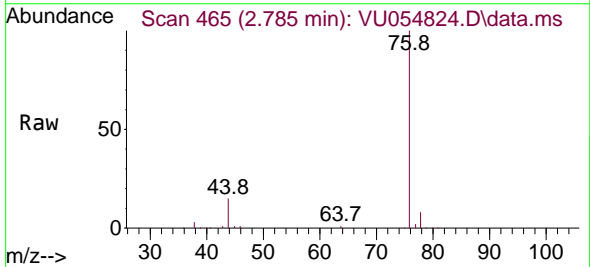
Instrument :
 MSVOA_U
 ClientSampleId :
 VSTD050107

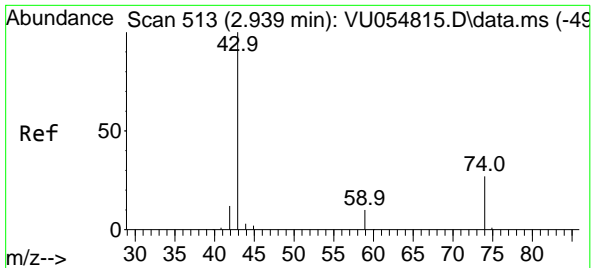
Tgt Ion: 43 Resp: 46853
 Ion Ratio Lower Upper
 43 100
 58 36.7 0.0 72.4



#14
 Carbon disulfide
 Concen: 31.102 ug/L
 RT: 2.785 min Scan# 465
 Delta R.T. 0.000 min
 Lab File: VU054824.D
 Acq: 19 Jul 2023 16:57

Tgt Ion: 76 Resp: 76779
 Ion Ratio Lower Upper
 76 100
 78 8.7 7.4 11.0

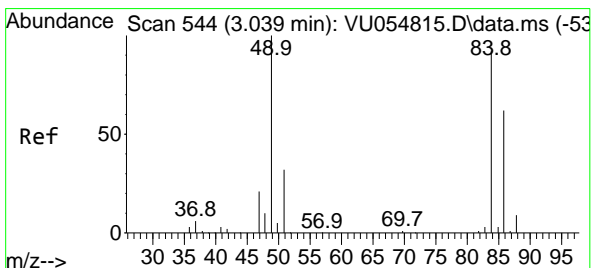
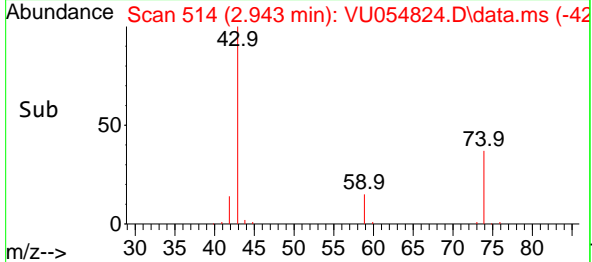
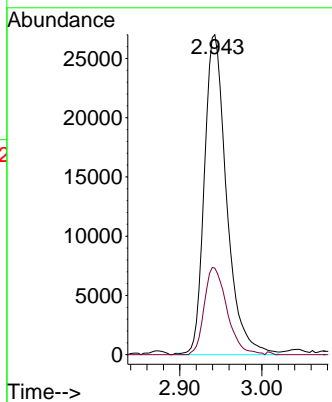
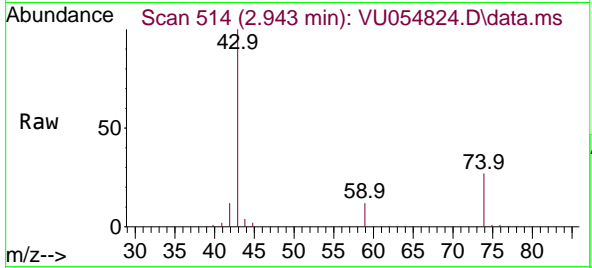




#15
Methyl Acetate
Concen: 53.768 ug/L
RT: 2.943 min Scan# 514
Delta R.T. 0.003 min
Lab File: VU054824.D
Acq: 19 Jul 2023 16:57

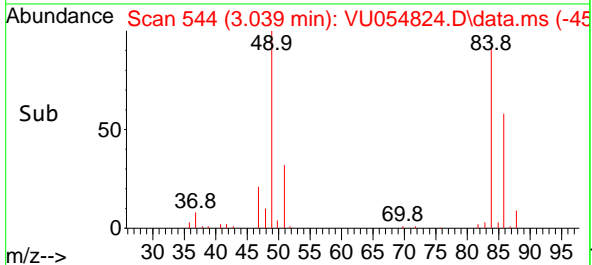
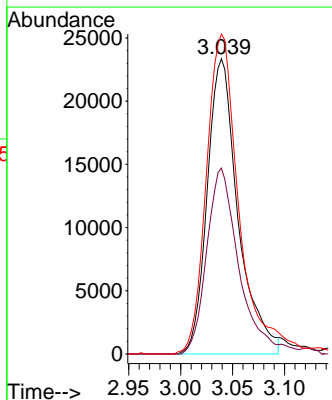
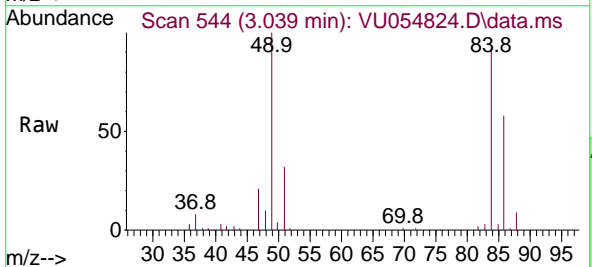
Instrument : MSVOA_U
ClientSampleId : VSTD050107

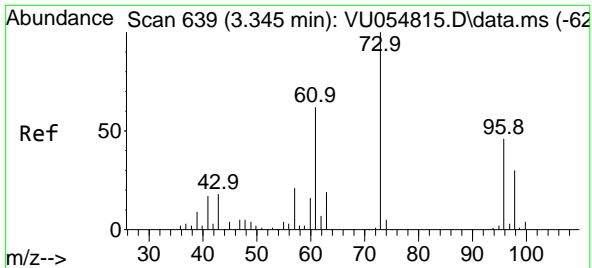
Tgt Ion	Resp	Lower	Upper
43	50918	100	
74	27.8	21.8	32.8



#16
Methylene chloride
Concen: 47.316 ug/L
RT: 3.039 min Scan# 544
Delta R.T. 0.000 min
Lab File: VU054824.D
Acq: 19 Jul 2023 16:57

Tgt Ion	Resp	Lower	Upper
84	48290	100	
86	63.0	46.8	87.0
49	108.4	81.3	151.1

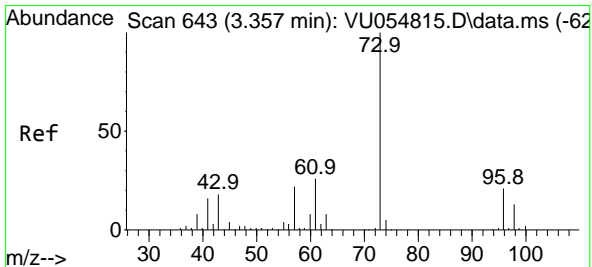
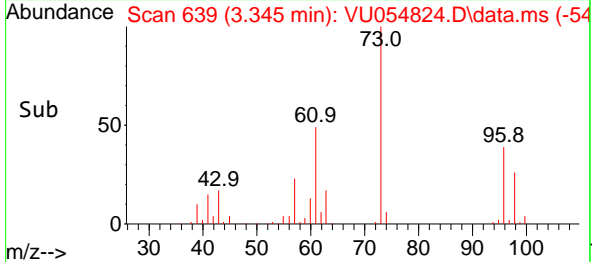
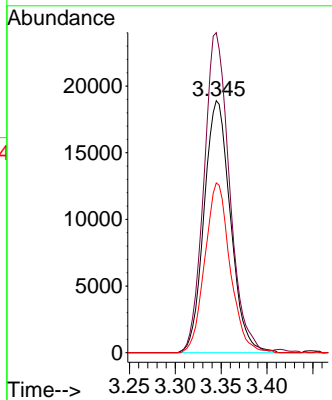
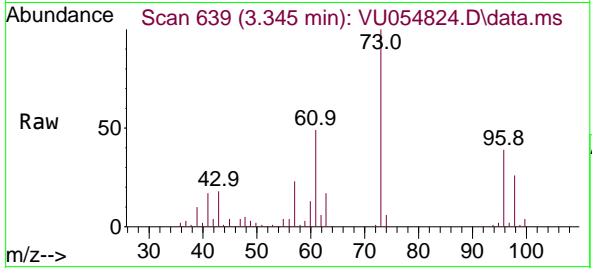




#17
 trans-1,2-Dichloroethene
 Concen: 43.252 ug/L
 RT: 3.345 min Scan# 61
 Delta R.T. 0.000 min
 Lab File: VU054824.D
 Acq: 19 Jul 2023 16:57

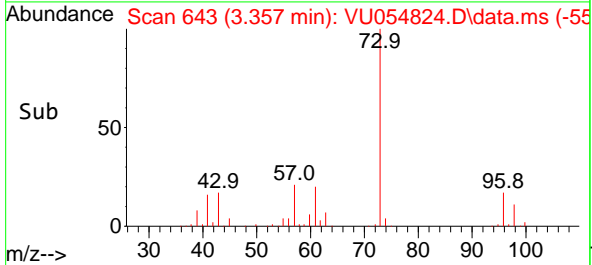
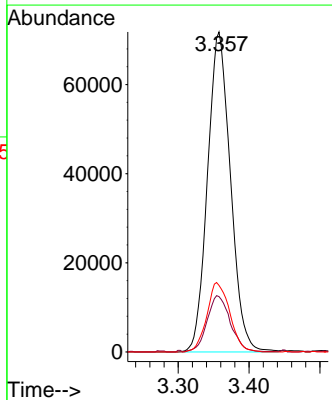
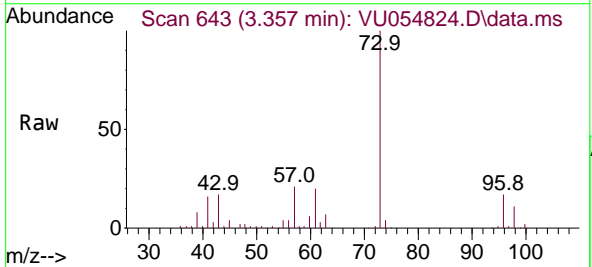
Instrument : MSVOA_U
 ClientSampleId : VSTD050107

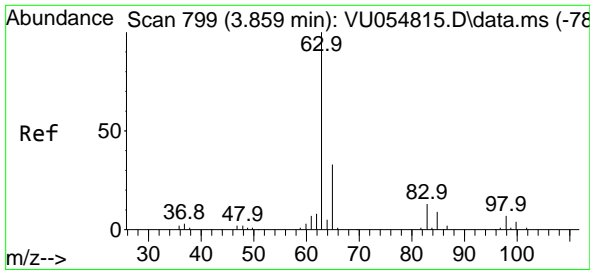
Tgt Ion	Resp	Lower	Upper
96	37848		
96	100		
61	126.9	93.2	173.2
98	67.3	44.7	82.9



#18
 Methyl tert-butyl Ether
 Concen: 53.290 ug/L
 RT: 3.357 min Scan# 643
 Delta R.T. 0.000 min
 Lab File: VU054824.D
 Acq: 19 Jul 2023 16:57

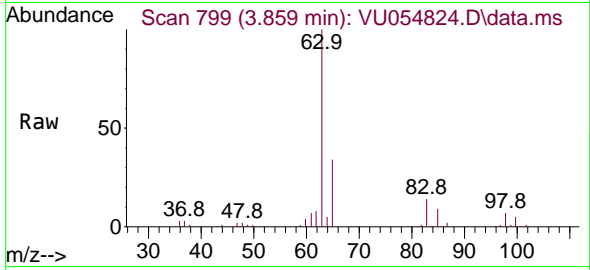
Tgt Ion	Resp	Lower	Upper
73	161383		
73	100		
43	17.9	14.3	21.5
57	21.6	17.4	26.0





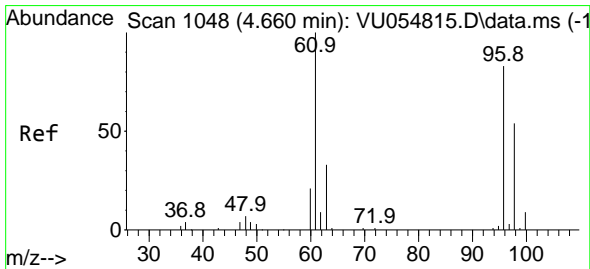
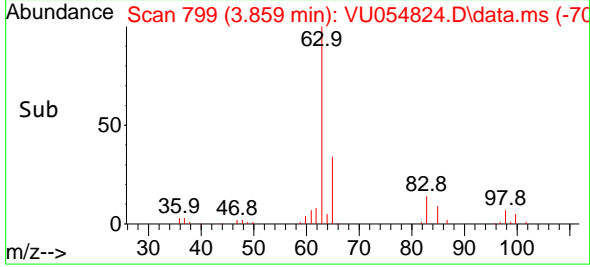
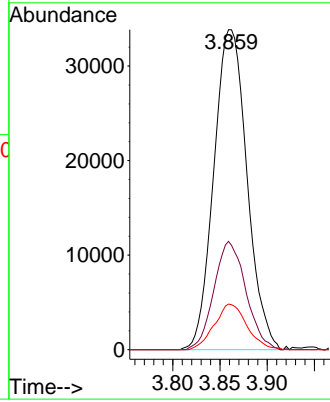
#19
 1,1-Dichloroethane
 Concen: 49.467 ug/L
 RT: 3.859 min Scan# 799
 Delta R.T. 0.000 min
 Lab File: VU054824.D
 Acq: 19 Jul 2023 16:57

Instrument :
 MSVOA_U
 ClientSampleId :
 VSTD050107



Tgt Ion: 63 Resp: 82596

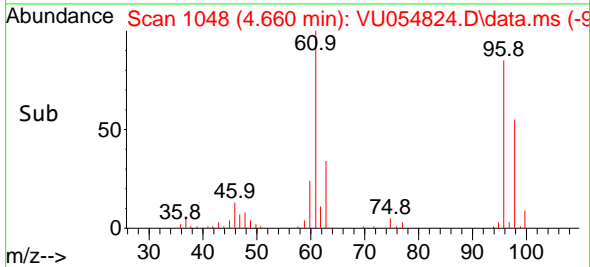
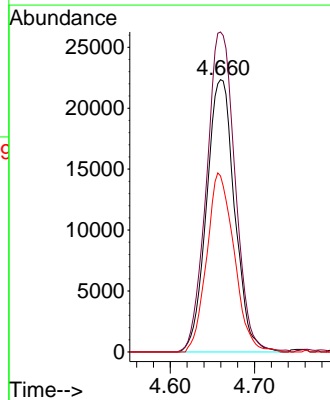
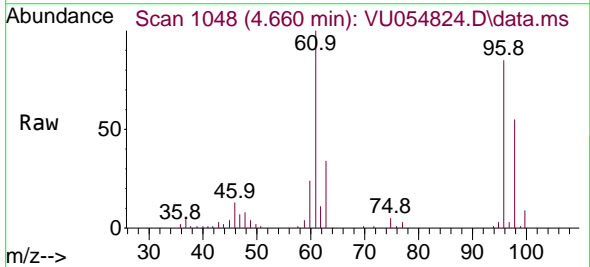
Ion	Ratio	Lower	Upper
63	100		
65	34.3	22.1	41.1
83	14.6	9.4	17.4

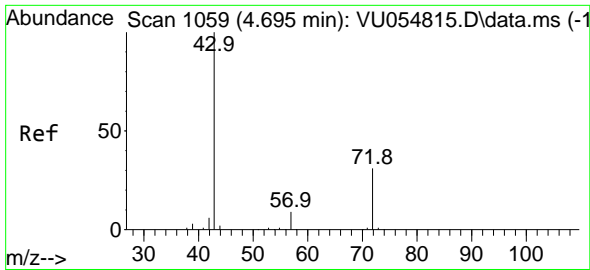


#20
 cis-1,2-Dichloroethene
 Concen: 49.738 ug/L
 RT: 4.660 min Scan# 1048
 Delta R.T. 0.000 min
 Lab File: VU054824.D
 Acq: 19 Jul 2023 16:57

Tgt Ion: 96 Resp: 51731

Ion	Ratio	Lower	Upper
96	100		
61	117.5	82.7	153.7
98	64.6	44.4	82.5

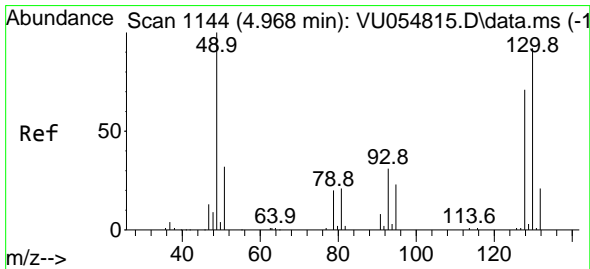
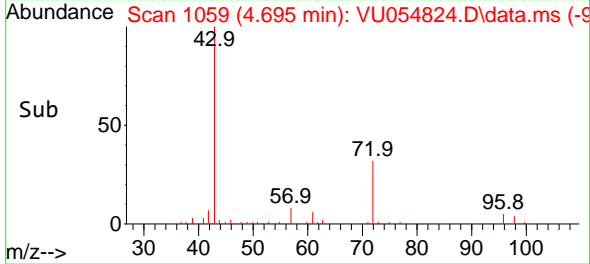
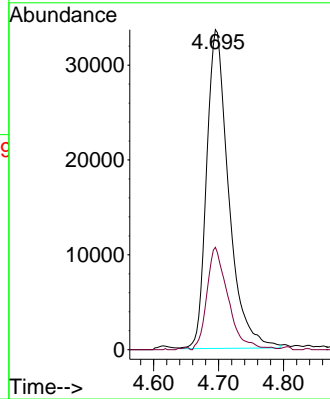
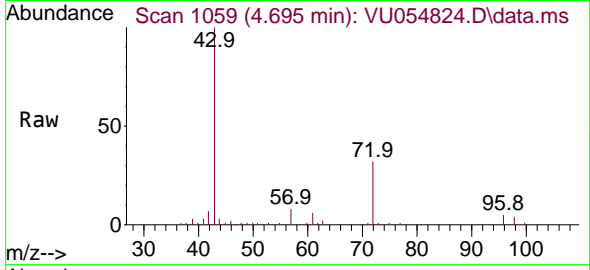




#22
 2-Butanone
 Concen: 101.424 ug/L
 RT: 4.695 min Scan# 1059
 Delta R.T. 0.000 min
 Lab File: VU054824.D
 Acq: 19 Jul 2023 16:57

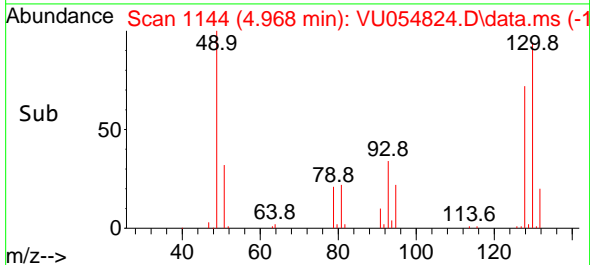
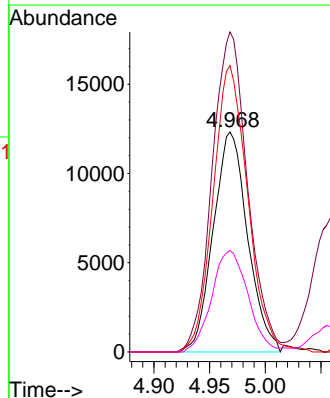
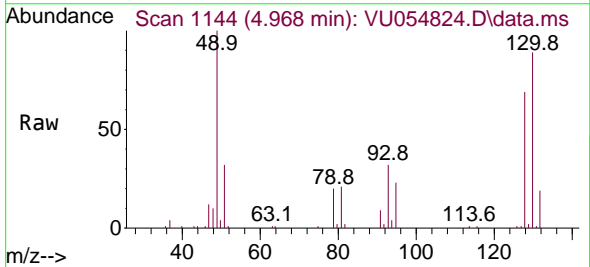
Instrument : MSVOA_U
 ClientSampleId : VSTD050107

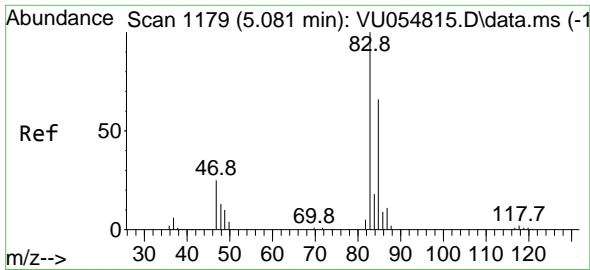
Tgt Ion: 43 Resp: 79499
 Ion Ratio Lower Upper
 43 100
 72 30.7 15.2 45.6



#23
 Bromochloromethane
 Concen: 49.909 ug/L
 RT: 4.968 min Scan# 1144
 Delta R.T. 0.000 min
 Lab File: VU054824.D
 Acq: 19 Jul 2023 16:57

Tgt Ion:128 Resp: 26408
 Ion Ratio Lower Upper
 128 100
 49 145.4 100.6 186.8
 130 130.1 83.0 154.1
 51 46.1 38.2 57.2

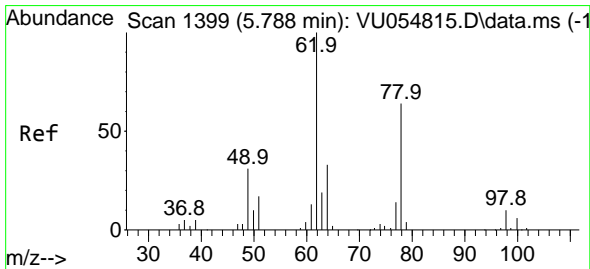
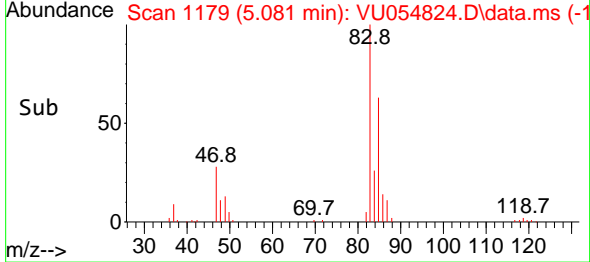
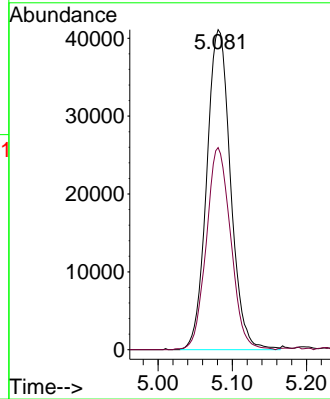
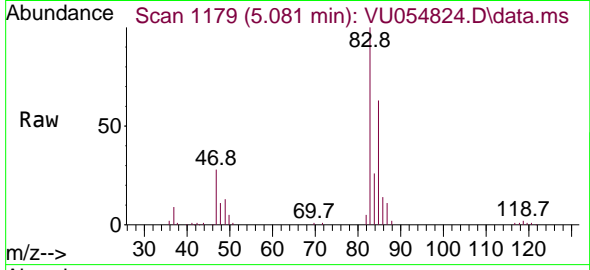




#25
 Chloroform
 Concen: 52.394 ug/L
 RT: 5.081 min Scan# 1179
 Delta R.T. 0.000 min
 Lab File: VU054824.D
 Acq: 19 Jul 2023 16:57

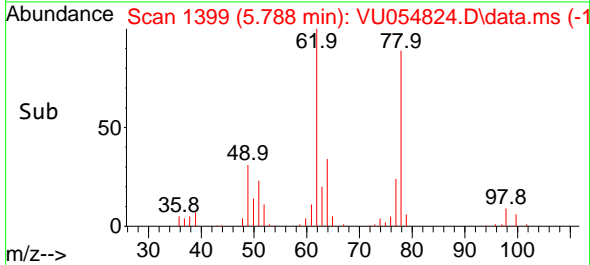
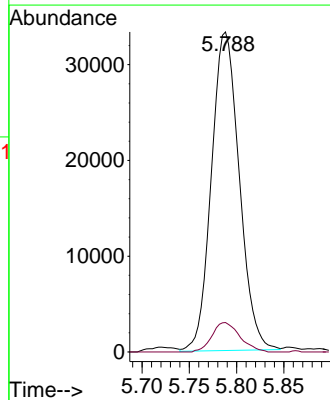
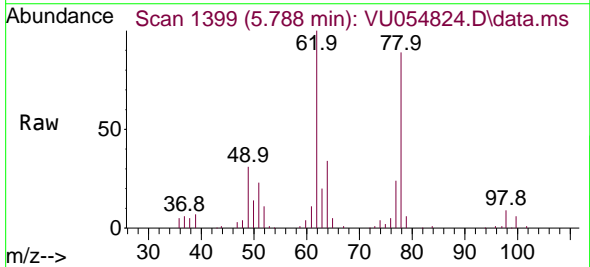
Instrument : MSVOA_U
 ClientSampleId : VSTD050107

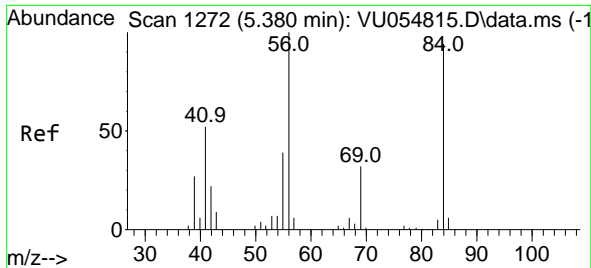
Tgt Ion: 83 Resp: 91738
 Ion Ratio Lower Upper
 83 100
 85 63.1 44.7 82.9



#27
 1,2-Dichloroethane
 Concen: 51.329 ug/L
 RT: 5.788 min Scan# 1399
 Delta R.T. 0.000 min
 Lab File: VU054824.D
 Acq: 19 Jul 2023 16:57

Tgt Ion: 62 Resp: 68253
 Ion Ratio Lower Upper
 62 100
 98 9.2 7.5 11.3

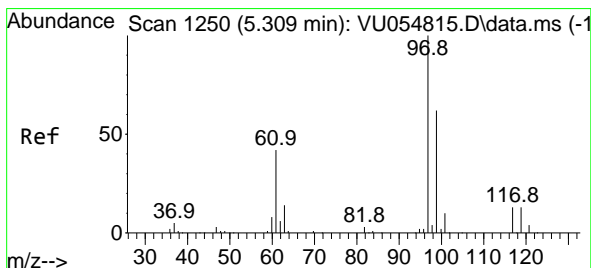
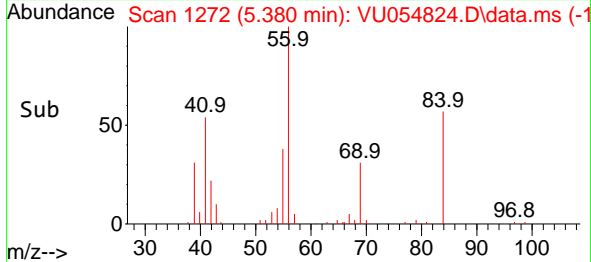
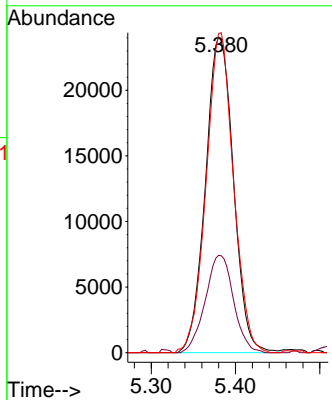
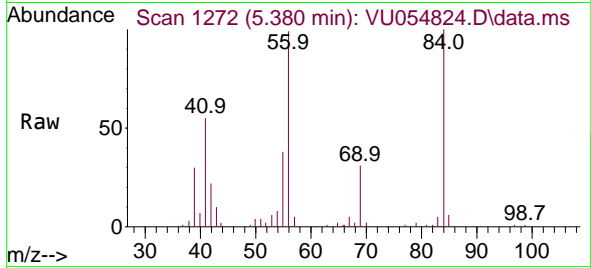




#29
 Cyclohexane
 Concen: 38.605 ug/L
 RT: 5.380 min Scan# 11
 Delta R.T. 0.000 min
 Lab File: VU054824.D
 Acq: 19 Jul 2023 16:57

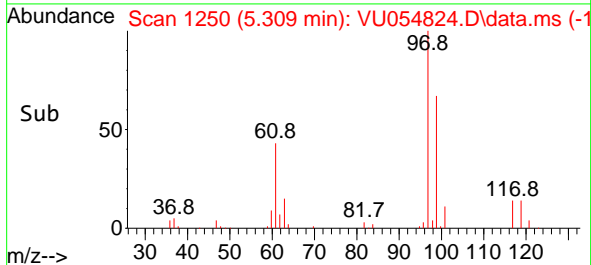
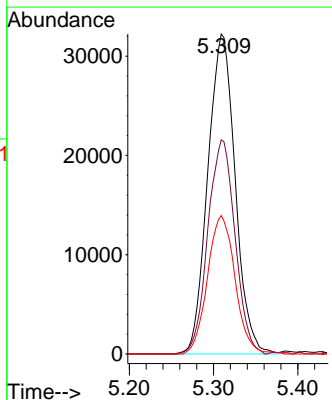
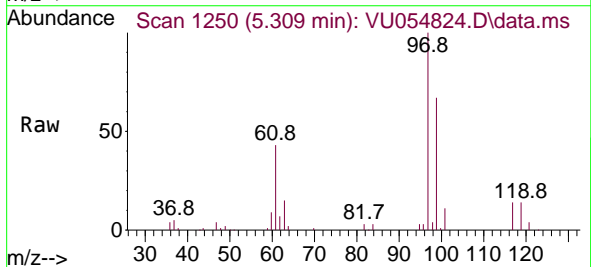
Instrument :
 MSVOA_U
 ClientSampleId :
 VSTD050107

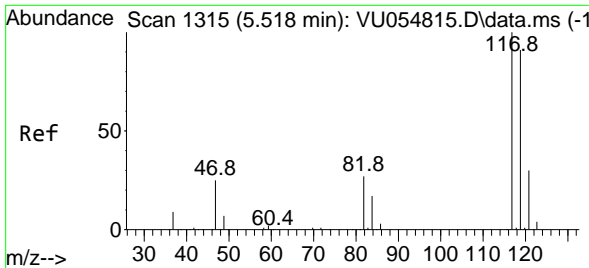
Tgt Ion	Resp	Lower	Upper
56	100		
69	31.2	25.8	38.8
84	98.9	75.9	113.9



#30
 1,1,1-Trichloroethane
 Concen: 50.195 ug/L
 RT: 5.309 min Scan# 1250
 Delta R.T. 0.000 min
 Lab File: VU054824.D
 Acq: 19 Jul 2023 16:57

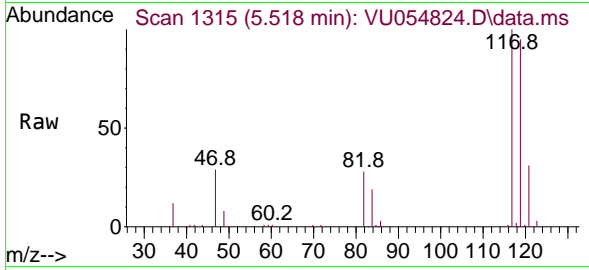
Tgt Ion	Resp	Lower	Upper
97	100		
99	66.4	52.0	78.0
61	43.4	34.3	51.5



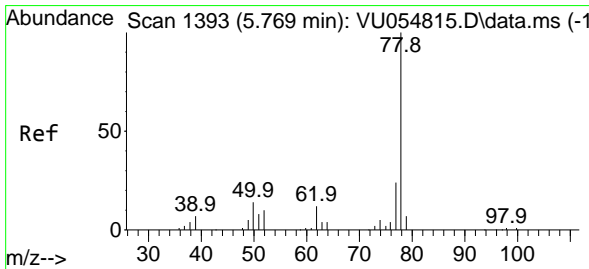
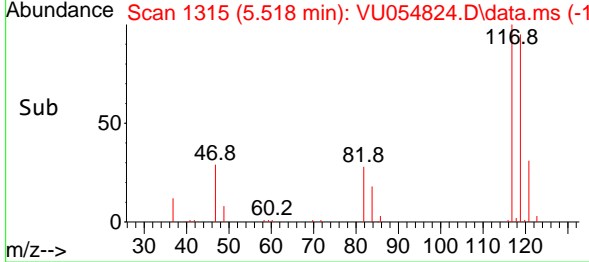
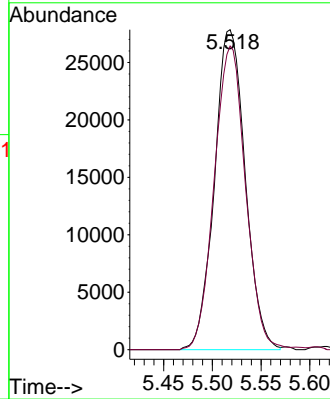


#31
 Carbon tetrachloride
 Concen: 48.803 ug/L
 RT: 5.518 min Scan# 111
 Delta R.T. 0.000 min
 Lab File: VU054824.D
 Acq: 19 Jul 2023 16:57

Instrument :
 MSVOA_U
 ClientSampleId :
 VSTD050107

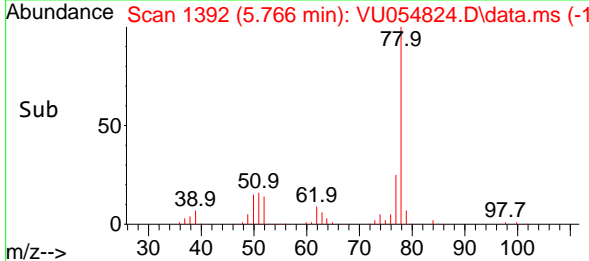
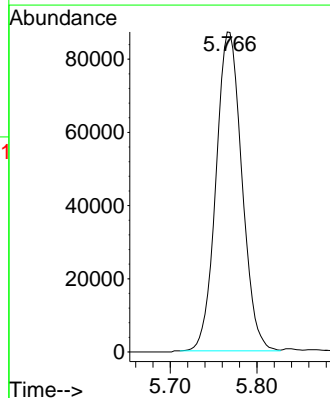
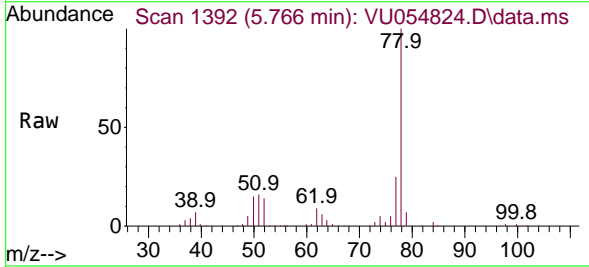


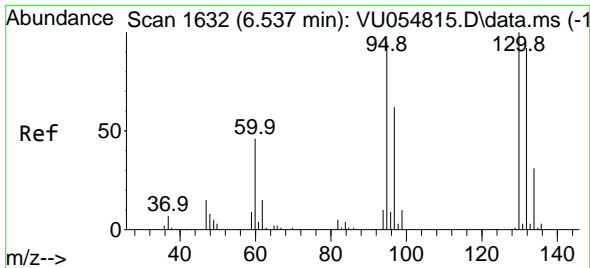
Tgt Ion:117 Resp: 61136
 Ion Ratio Lower Upper
 117 100
 119 96.3 77.4 116.2



#33
 Benzene
 Concen: 48.311 ug/L
 RT: 5.766 min Scan# 1392
 Delta R.T. -0.003 min
 Lab File: VU054824.D
 Acq: 19 Jul 2023 16:57

Tgt Ion: 78 Resp: 180927



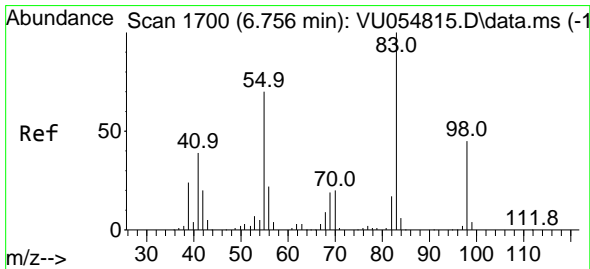
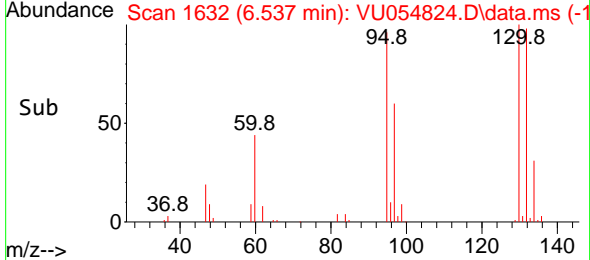
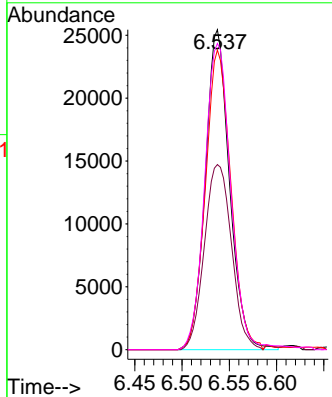
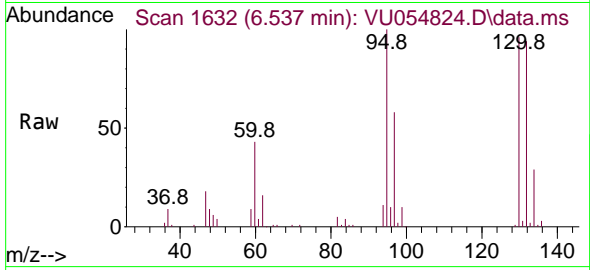


#34
 Trichloroethene
 Concen: 47.781 ug/L
 RT: 6.537 min Scan# 1
 Delta R.T. 0.000 min
 Lab File: VU054824.D
 Acq: 19 Jul 2023 16:57

Instrument : MSVOA_U
 ClientSampleId : VSTD050107

Tgt Ion: 95 Resp: 45549

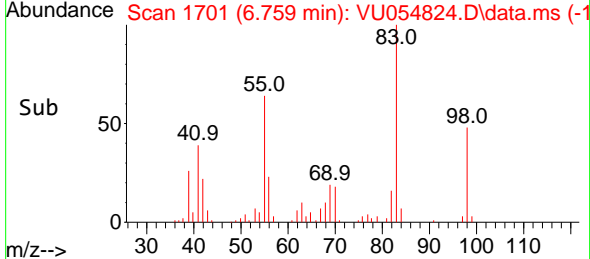
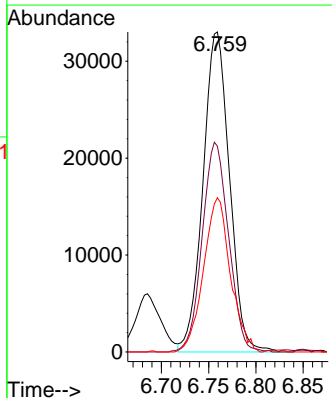
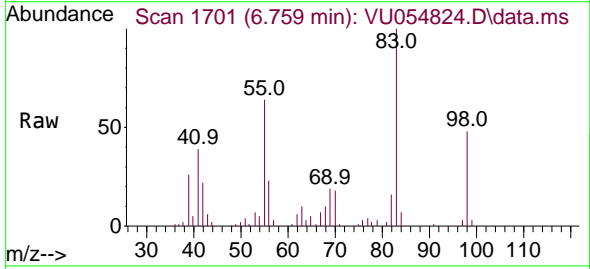
Ion	Ratio	Lower	Upper
95	100		
97	60.2	44.0	81.8
132	93.6	67.9	126.1
130	95.7	67.3	124.9

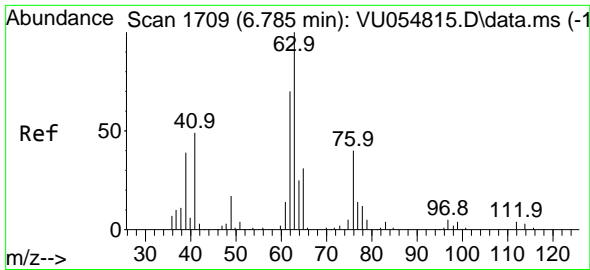


#35
 Methylcyclohexane
 Concen: 41.336 ug/L
 RT: 6.759 min Scan# 1701
 Delta R.T. 0.003 min
 Lab File: VU054824.D
 Acq: 19 Jul 2023 16:57

Tgt Ion: 83 Resp: 64399

Ion	Ratio	Lower	Upper
83	100		
55	65.2	55.8	83.8
98	48.9	38.6	58.0

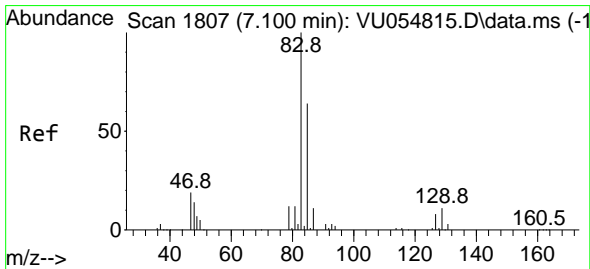
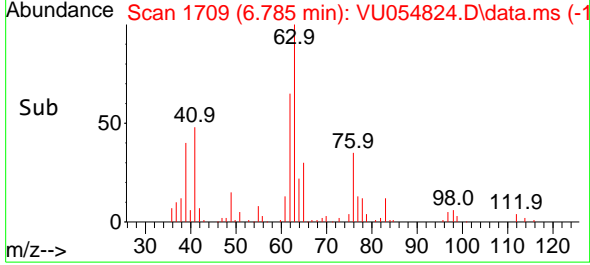
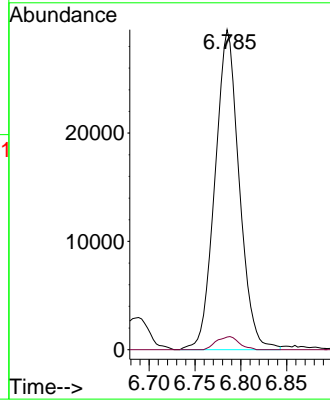
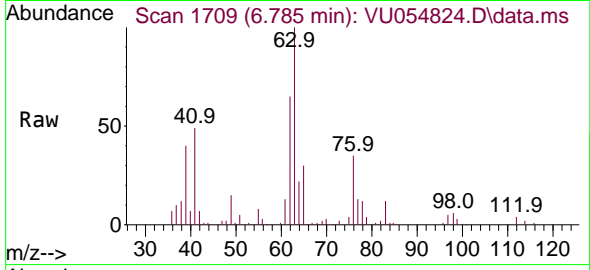




#37
 1,2-Dichloropropane
 Concen: 52.781 ug/L
 RT: 6.785 min Scan# 1709
 Delta R.T. 0.000 min
 Lab File: VU054824.D
 Acq: 19 Jul 2023 16:57

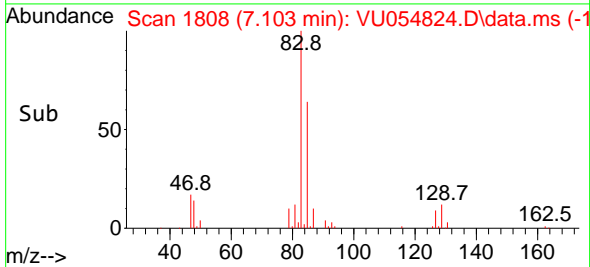
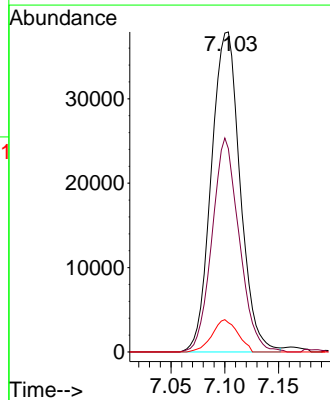
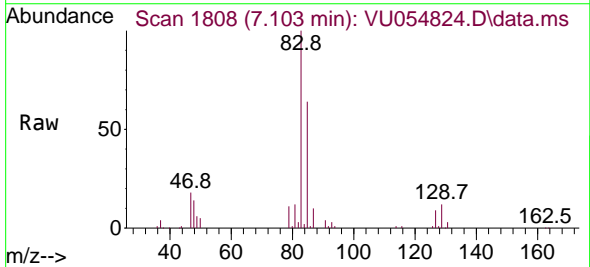
Instrument : MSVOA_U
 ClientSampleId : VSTD050107

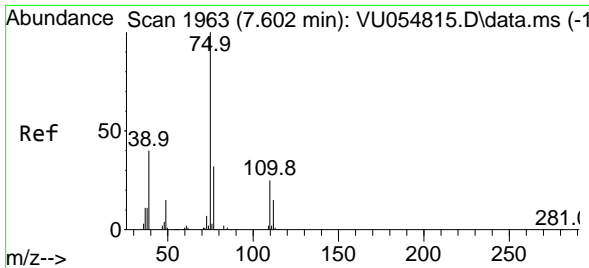
Tgt Ion: 63 Resp: 54363
 Ion Ratio Lower Upper
 63 100
 112 3.8 3.1 4.7



#38
 Bromodichloromethane
 Concen: 53.401 ug/L
 RT: 7.103 min Scan# 1808
 Delta R.T. 0.003 min
 Lab File: VU054824.D
 Acq: 19 Jul 2023 16:57

Tgt Ion: 83 Resp: 70565
 Ion Ratio Lower Upper
 83 100
 85 63.5 44.9 83.3
 127 9.9 7.2 10.8

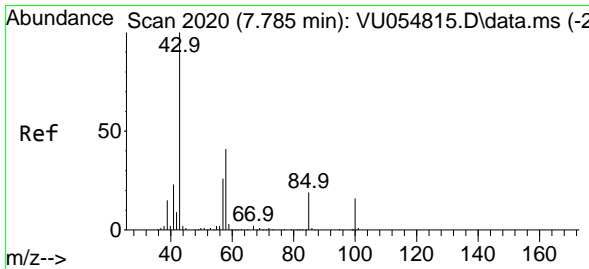
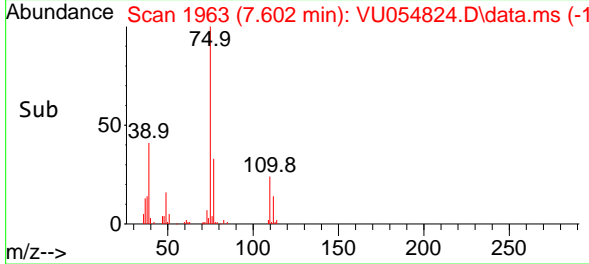
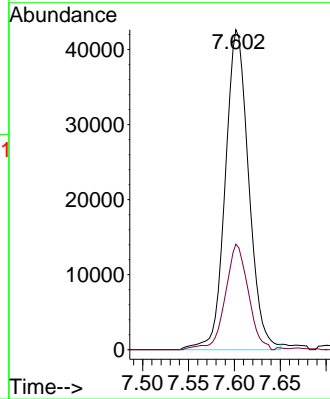
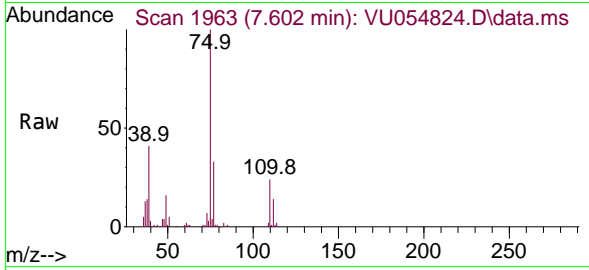




#39
 cis-1,3-Dichloropropene
 Concen: 44.621 ug/L
 RT: 7.602 min Scan# 1963
 Delta R.T. 0.000 min
 Lab File: VU054824.D
 Acq: 19 Jul 2023 16:57

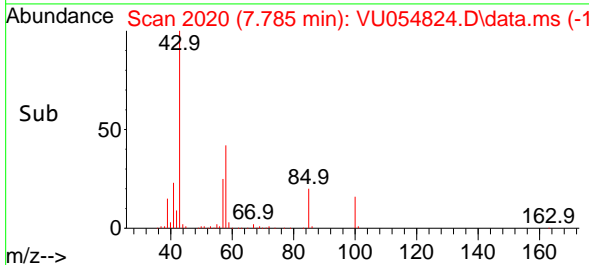
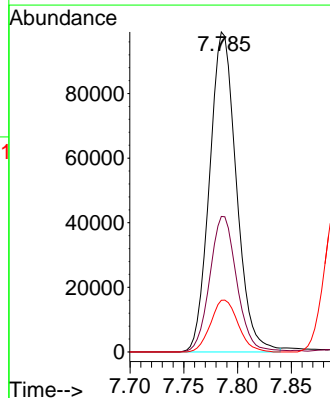
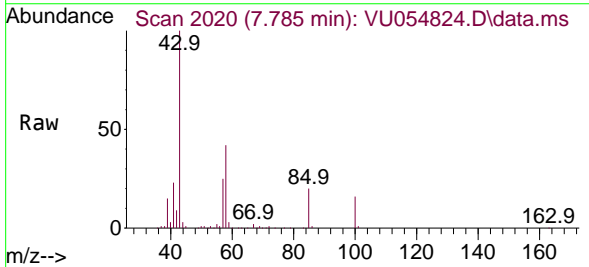
Instrument : MSVOA_U
 ClientSampleId : VSTD050107

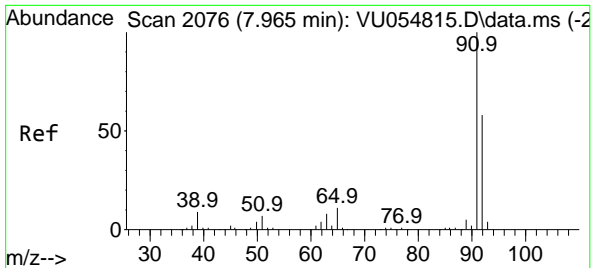
Tgt Ion: 75 Resp: 75799
 Ion Ratio Lower Upper
 75 100
 77 33.9 21.1 39.1



#40
 4-Methyl-2-pentanone
 Concen: 109.054 ug/L
 RT: 7.785 min Scan# 2020
 Delta R.T. 0.000 min
 Lab File: VU054824.D
 Acq: 19 Jul 2023 16:57

Tgt Ion: 43 Resp: 171990
 Ion Ratio Lower Upper
 43 100
 58 42.8 33.7 50.5
 100 16.6 13.0 19.4

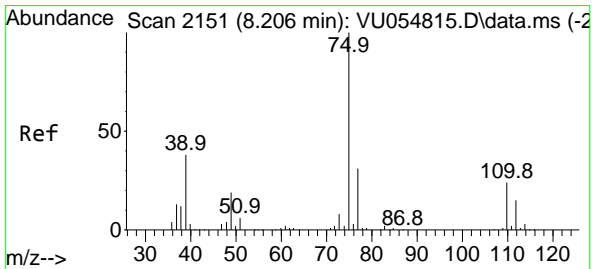
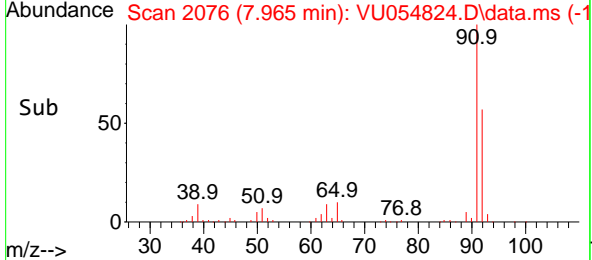
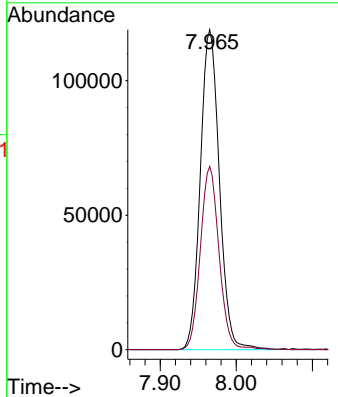
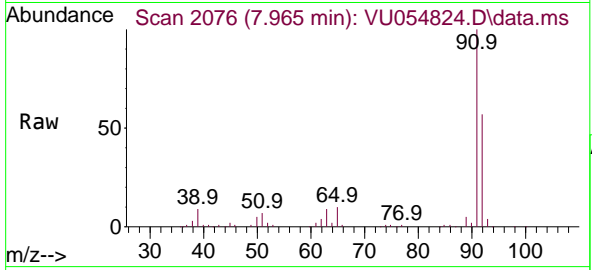




#42
 Toluene
 Concen: 49.521 ug/L
 RT: 7.965 min Scan# 2076
 Delta R.T. 0.000 min
 Lab File: VU054824.D
 Acq: 19 Jul 2023 16:57

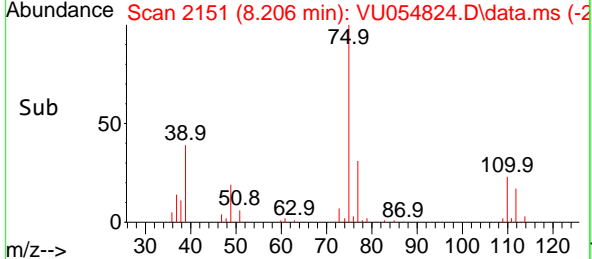
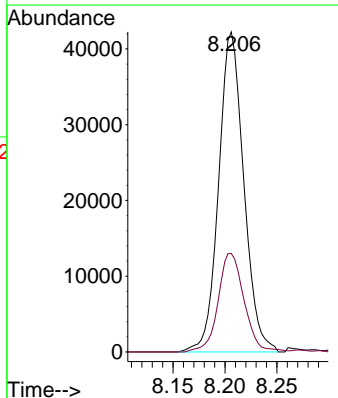
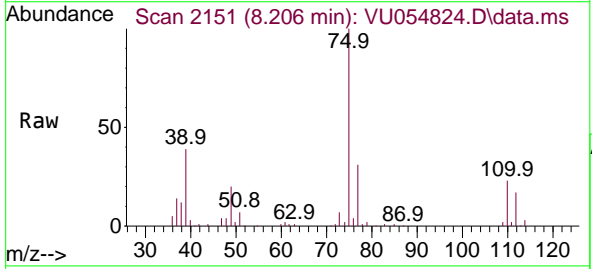
Instrument : MSVOA_U
 ClientSampleId : VSTD050107

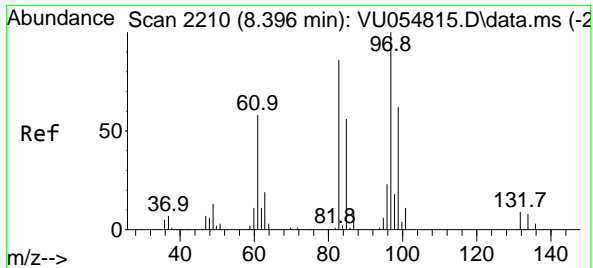
Tgt Ion: 91 Resp: 207528
 Ion Ratio Lower Upper
 91 100
 92 57.2 40.1 74.5



#44
 trans-1,3-Dichloropropene
 Concen: 44.571 ug/L
 RT: 8.206 min Scan# 2151
 Delta R.T. 0.000 min
 Lab File: VU054824.D
 Acq: 19 Jul 2023 16:57

Tgt Ion: 75 Resp: 71136
 Ion Ratio Lower Upper
 75 100
 77 30.8 22.7 42.1

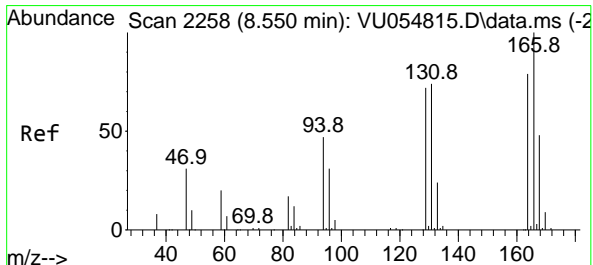
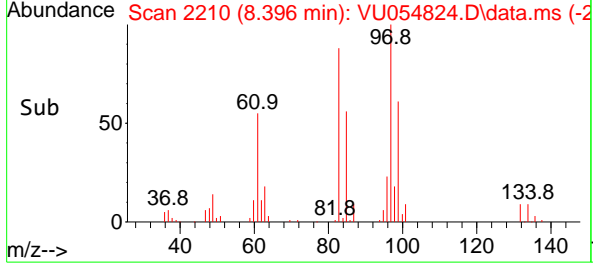
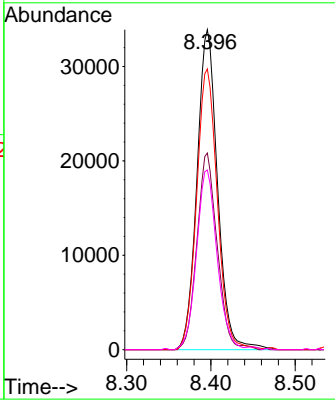
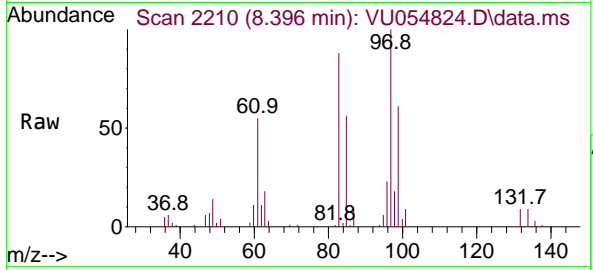




#45
 1,1,2-Trichloroethane
 Concen: 55.067 ug/L
 RT: 8.396 min Scan# 211
 Delta R.T. 0.000 min
 Lab File: VU054824.D
 Acq: 19 Jul 2023 16:57

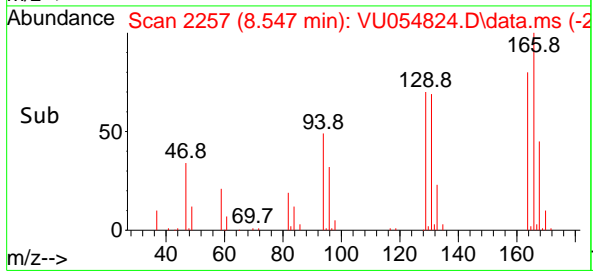
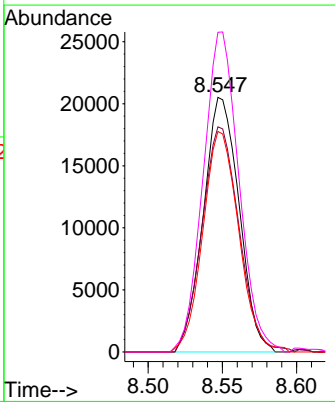
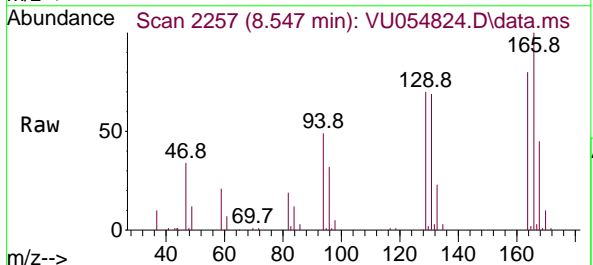
Instrument : MSVOA_U
 ClientSampleId : VSTD050107

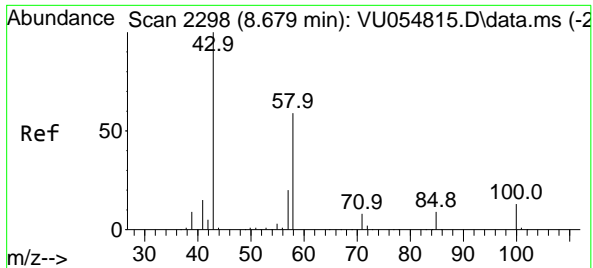
Tgt Ion	Resp	Lower	Upper
97	57826		
97	100		
99	61.4	43.3	80.5
83	87.7	60.6	112.6
85	56.2	40.5	75.3



#46
 Tetrachloroethene
 Concen: 46.947 ug/L
 RT: 8.547 min Scan# 2257
 Delta R.T. -0.003 min
 Lab File: VU054824.D
 Acq: 19 Jul 2023 16:57

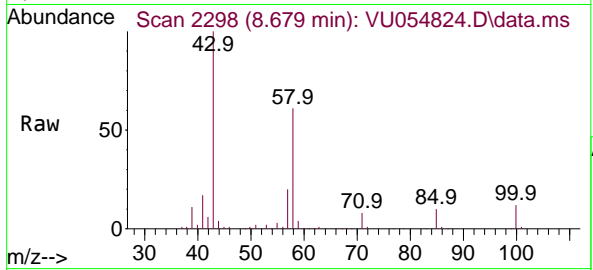
Tgt Ion	Resp	Lower	Upper
164	34311		
164	100		
129	91.1	66.2	123.0
131	86.6	61.9	115.1
166	125.6	89.2	165.8



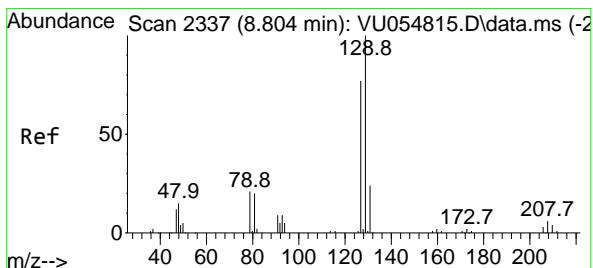
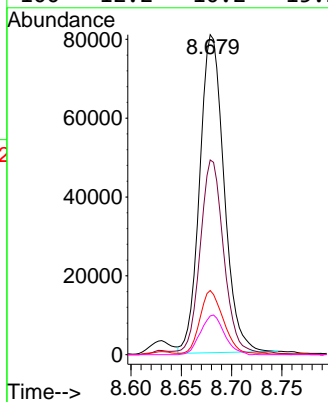
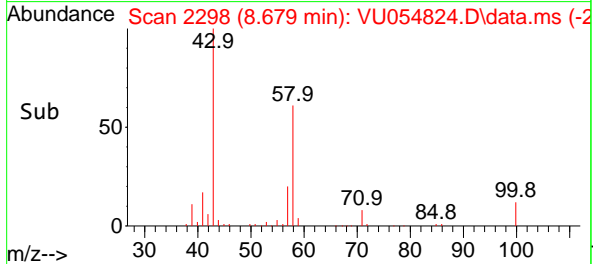


#48
 2-Hexanone
 Concen: 104.034 ug/L
 RT: 8.679 min Scan# 21
 Delta R.T. 0.000 min
 Lab File: VU054824.D
 Acq: 19 Jul 2023 16:57

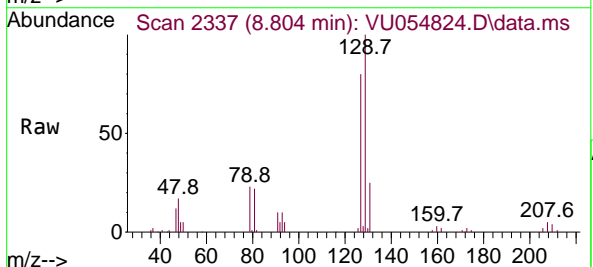
Instrument :
 MSVOA_U
 ClientSampleId :
 VSTD050107



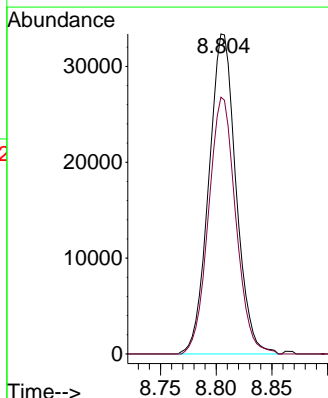
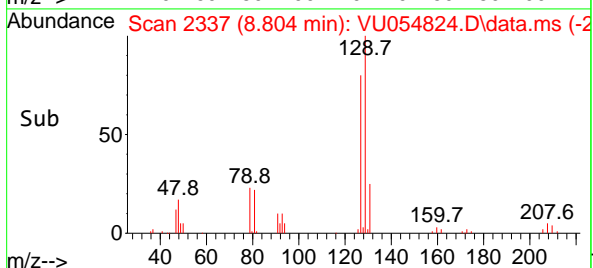
Tgt Ion: 43 Resp: 135923
 Ion Ratio Lower Upper
 43 100
 58 59.7 46.5 69.7
 57 18.9 15.4 23.2
 100 12.2 10.2 15.2

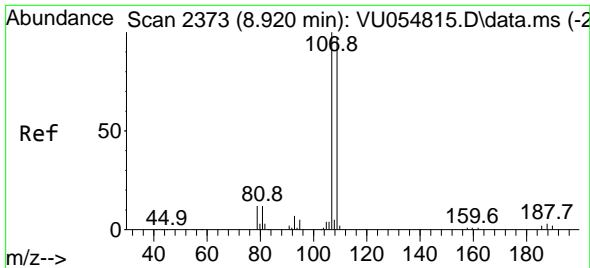


#49
 Dibromochloromethane
 Concen: 52.431 ug/L
 RT: 8.804 min Scan# 2337
 Delta R.T. 0.000 min
 Lab File: VU054824.D
 Acq: 19 Jul 2023 16:57



Tgt Ion:129 Resp: 56710
 Ion Ratio Lower Upper
 129 100
 127 80.3 54.4 101.0





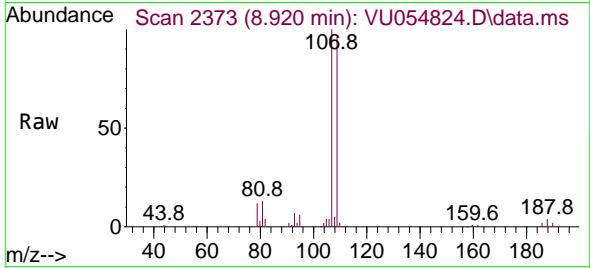
#50
 1,2-Dibromoethane
 Concen: 52.800 ug/L
 RT: 8.920 min Scan# 21
 Delta R.T. 0.000 min
 Lab File: VU054824.D
 Acq: 19 Jul 2023 16:57

Instrument :

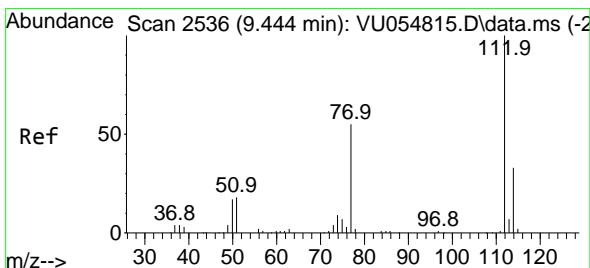
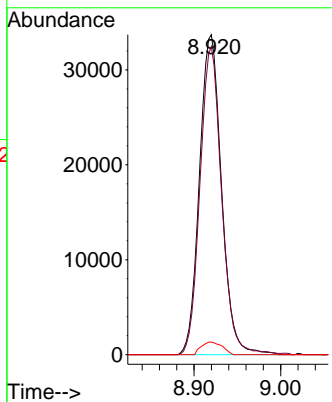
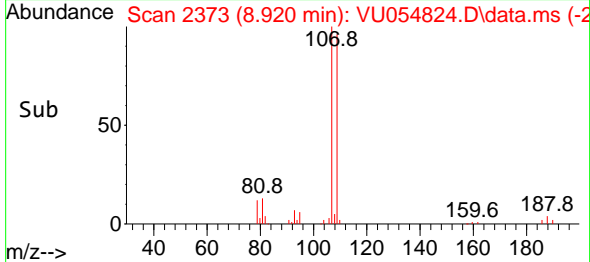
MSVOA_U

ClientSampleId :

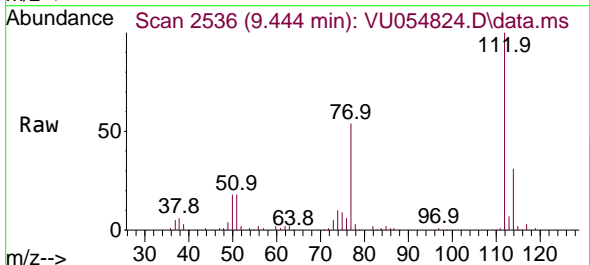
VSTD050107



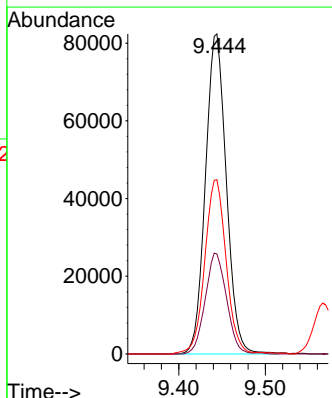
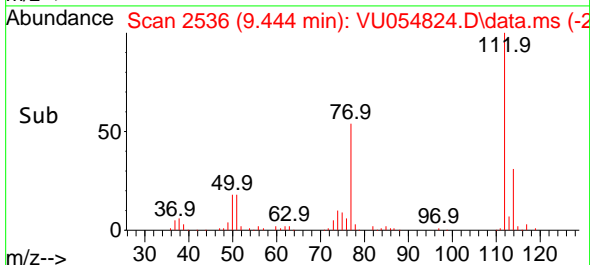
Tgt Ion:107 Resp: 59680
 Ion Ratio Lower Upper
 107 100
 109 96.3 62.5 116.1
 188 4.0 2.6 4.0

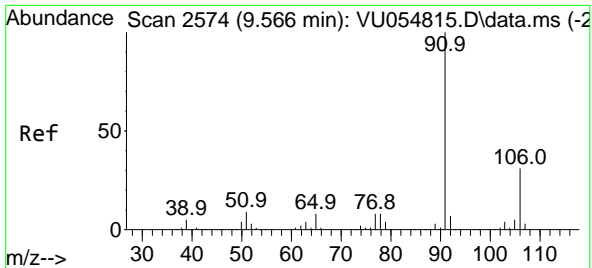


#51
 Chlorobenzene
 Concen: 50.714 ug/L
 RT: 9.444 min Scan# 2536
 Delta R.T. 0.000 min
 Lab File: VU054824.D
 Acq: 19 Jul 2023 16:57



Tgt Ion:112 Resp: 138262
 Ion Ratio Lower Upper
 112 100
 114 31.3 22.3 41.5
 77 54.4 44.2 66.4

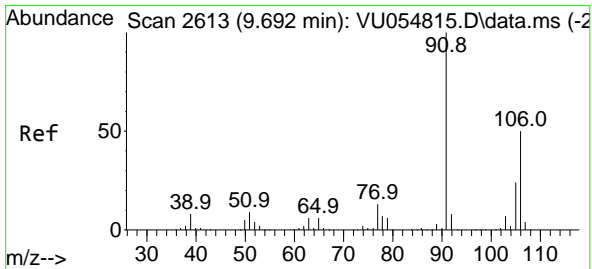
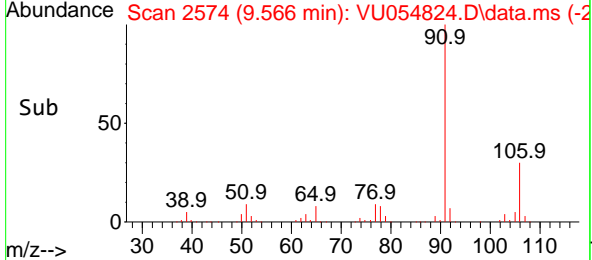
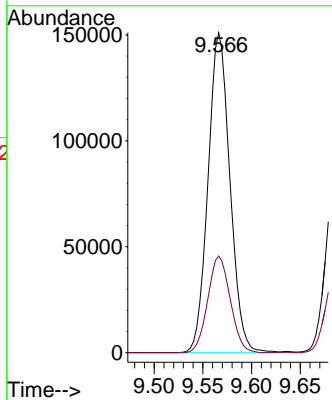
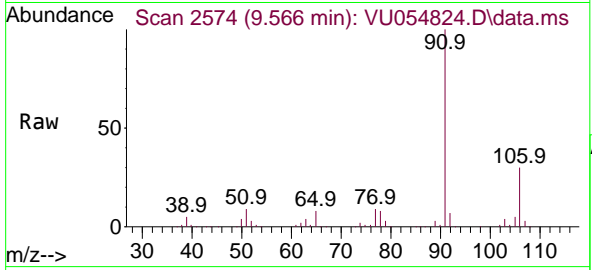




#52
 Ethylbenzene
 Concen: 48.775 ug/L
 RT: 9.566 min Scan# 21
 Delta R.T. 0.000 min
 Lab File: VU054824.D
 Acq: 19 Jul 2023 16:57

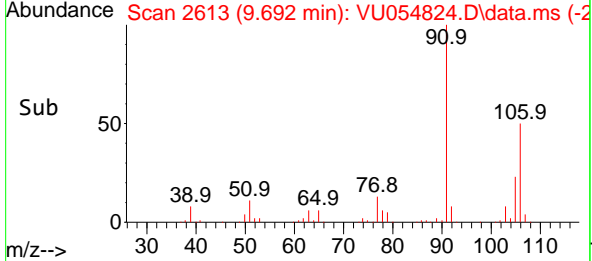
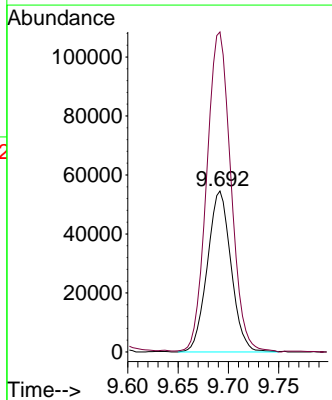
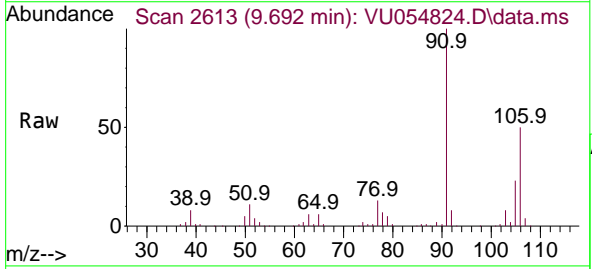
Instrument : MSVOA_U
 ClientSampleId : VSTD050107

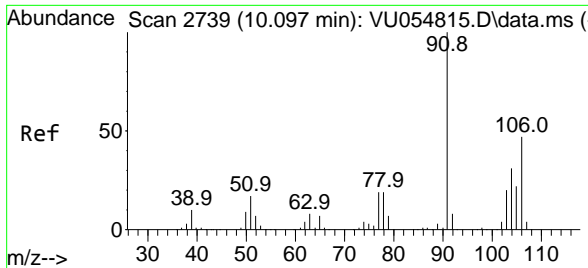
Tgt Ion: 91 Resp: 236318
 Ion Ratio Lower Upper
 91 100
 106 30.2 23.5 43.7



#53
 m,p-Xylene
 Concen: 48.520 ug/L
 RT: 9.692 min Scan# 2613
 Delta R.T. 0.000 min
 Lab File: VU054824.D
 Acq: 19 Jul 2023 16:57

Tgt Ion: 106 Resp: 89504
 Ion Ratio Lower Upper
 106 100
 91 183.0 133.3 247.7

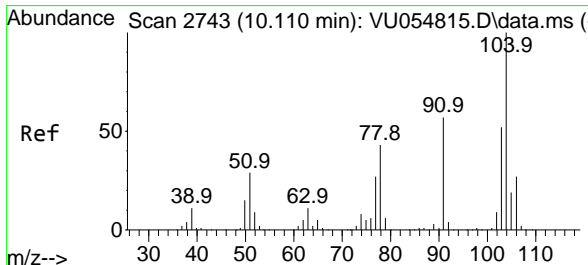
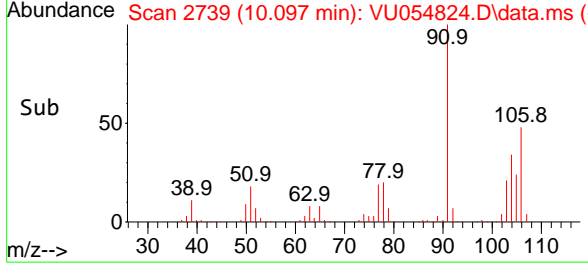
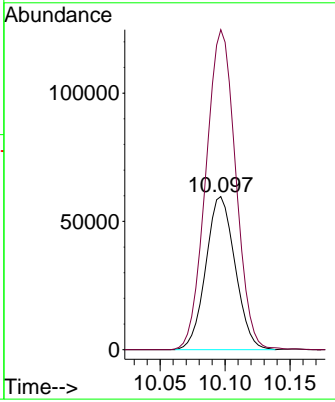
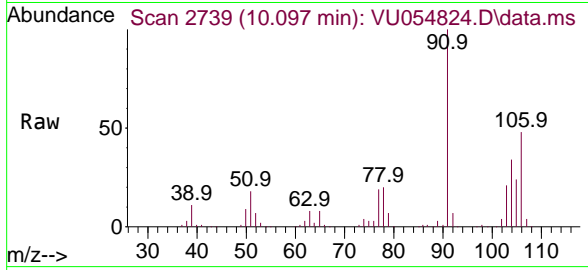




#54
 o-Xylene
 Concen: 49.964 ug/L
 RT: 10.097 min Scan# 2739
 Delta R.T. 0.000 min
 Lab File: VU054824.D
 Acq: 19 Jul 2023 16:57

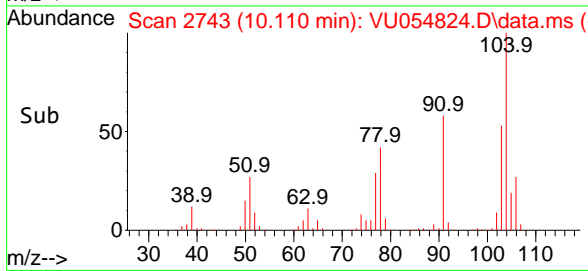
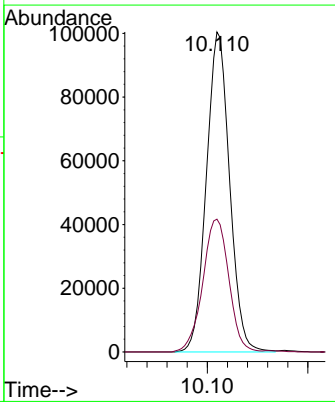
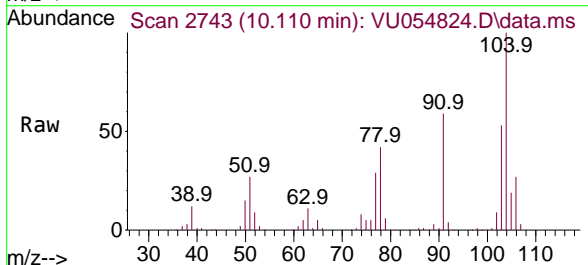
Instrument : MSVOA_U
 ClientSampleId : VSTD050107

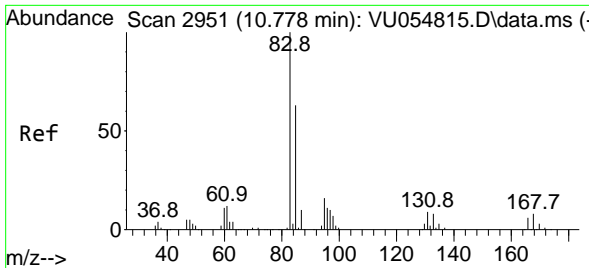
Tgt Ion:106 Resp: 93630
 Ion Ratio Lower Upper
 106 100
 91 208.9 142.0 263.8



#55
 Styrene
 Concen: 49.361 ug/L
 RT: 10.110 min Scan# 2743
 Delta R.T. 0.000 min
 Lab File: VU054824.D
 Acq: 19 Jul 2023 16:57

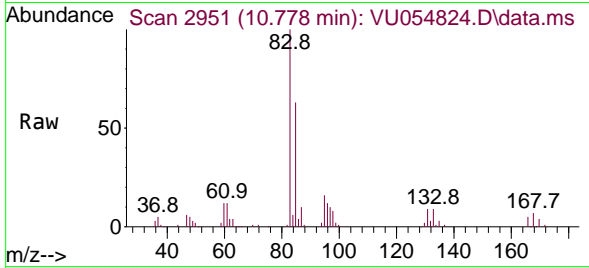
Tgt Ion:104 Resp: 161103
 Ion Ratio Lower Upper
 104 100
 78 41.5 30.7 57.1



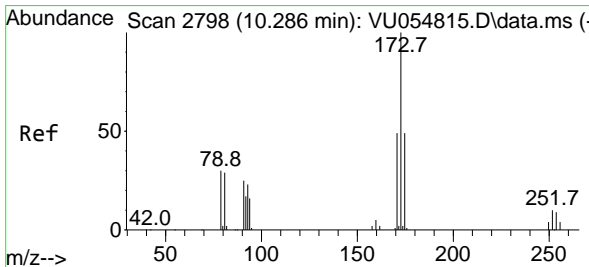
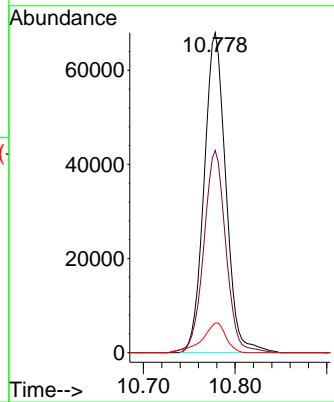
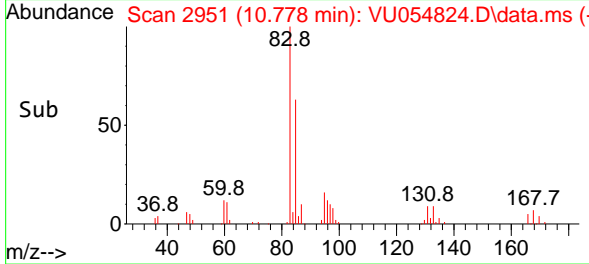


#57
 1,1,2,2-Tetrachloroethane
 Concen: 53.994 ug/L
 RT: 10.778 min Scan# 2951
 Delta R.T. 0.000 min
 Lab File: VU054824.D
 Acq: 19 Jul 2023 16:57

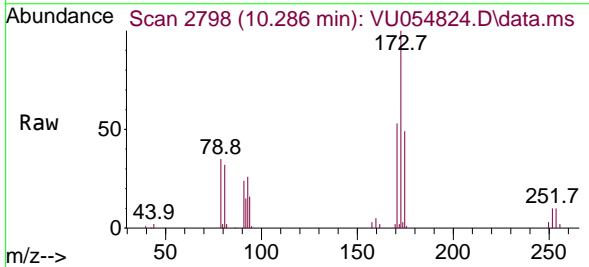
Instrument :
 MSVOA_U
 ClientSampleId :
 VSTD050107



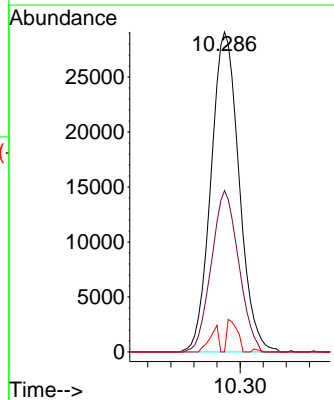
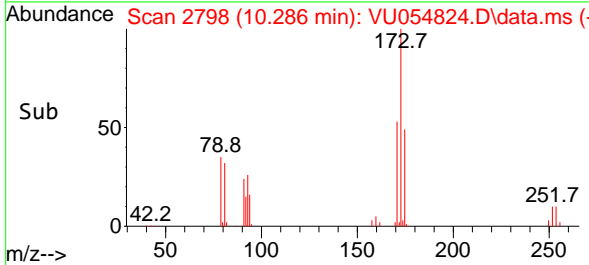
Tgt Ion: 83 Resp: 111942
 Ion Ratio Lower Upper
 83 100
 85 63.2 43.8 81.4
 131 9.2 8.7 13.1

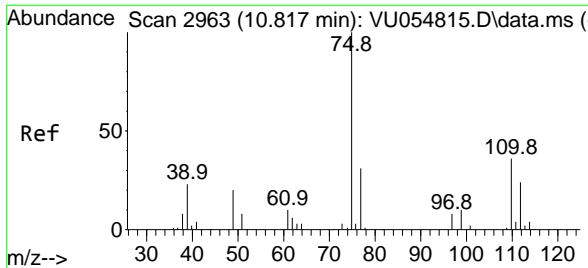


#59
 Bromoform
 Concen: 54.622 ug/L
 RT: 10.286 min Scan# 2798
 Delta R.T. 0.000 min
 Lab File: VU054824.D
 Acq: 19 Jul 2023 16:57



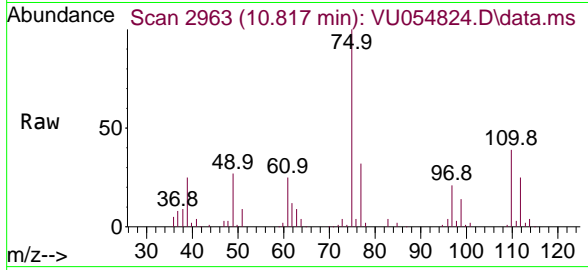
Tgt Ion: 173 Resp: 49145
 Ion Ratio Lower Upper
 173 100
 175 48.9 38.8 58.2
 254 3.7 2.4 3.6#



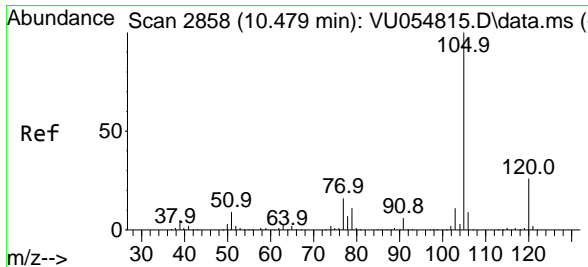
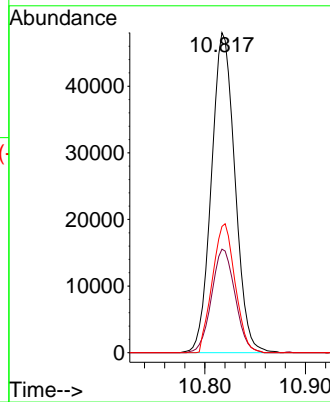
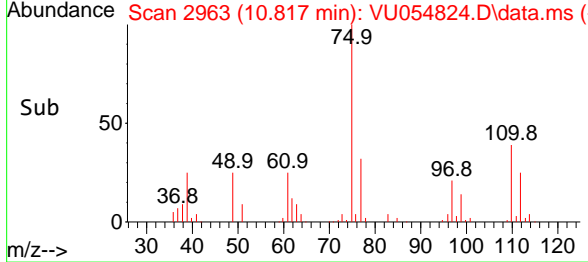


#60
 1,2,3-Trichloropropane
 Concen: 55.635 ug/L
 RT: 10.817 min Scan# 2963
 Delta R.T. 0.000 min
 Lab File: VU054824.D
 Acq: 19 Jul 2023 16:57

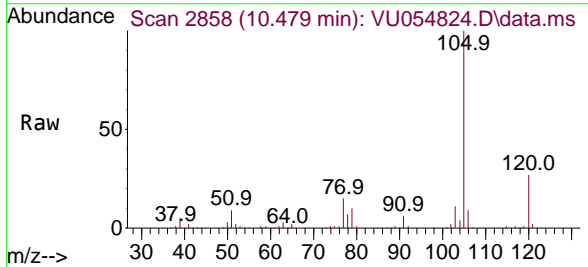
Instrument : MSVOA_U
 ClientSampleId : VSTD050107



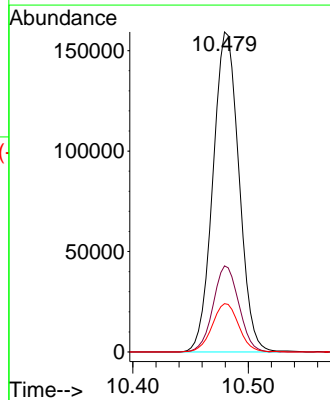
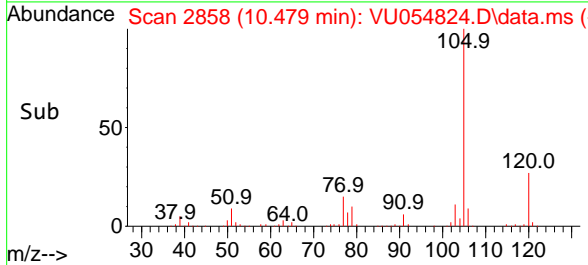
Tgt Ion: 75 Resp: 78086
 Ion Ratio Lower Upper
 75 100
 77 32.3 26.2 39.4
 110 38.9 29.9 44.9

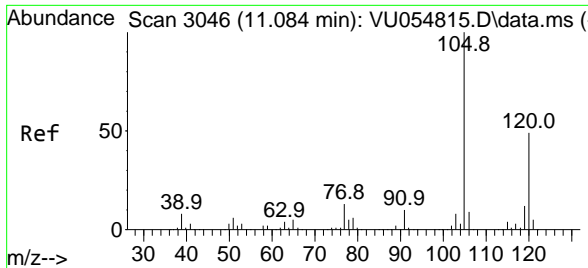


#61
 Isopropylbenzene
 Concen: 52.435 ug/L
 RT: 10.479 min Scan# 2858
 Delta R.T. 0.000 min
 Lab File: VU054824.D
 Acq: 19 Jul 2023 16:57



Tgt Ion: 105 Resp: 249202
 Ion Ratio Lower Upper
 105 100
 120 26.6 21.4 32.0
 77 15.5 12.8 19.2

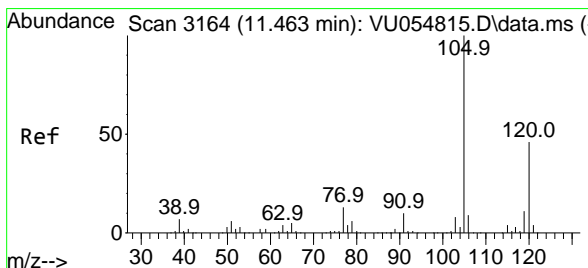
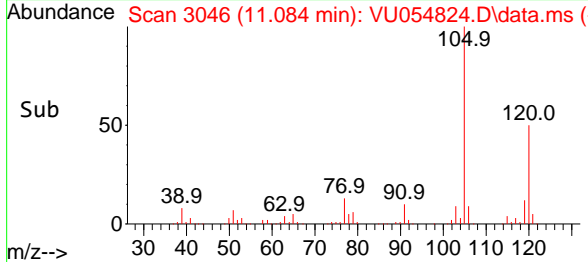
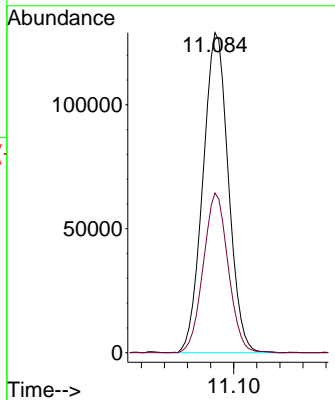
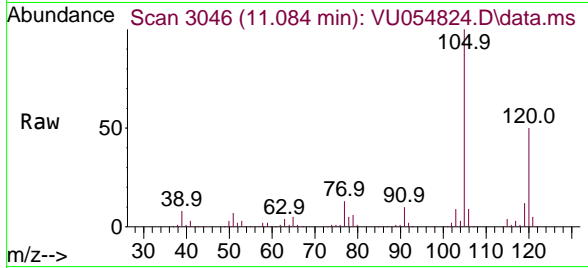




#62
 1,3,5-Trimethylbenzene
 Concen: 50.462 ug/L
 RT: 11.084 min Scan# 3046
 Delta R.T. 0.000 min
 Lab File: VU054824.D
 Acq: 19 Jul 2023 16:57

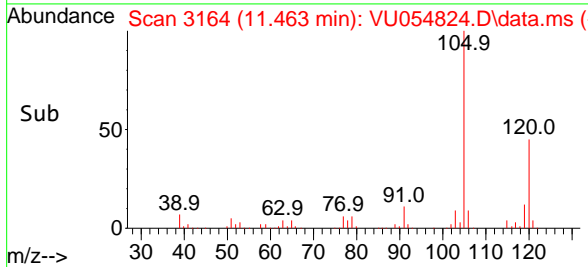
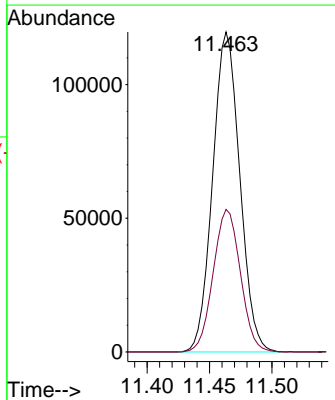
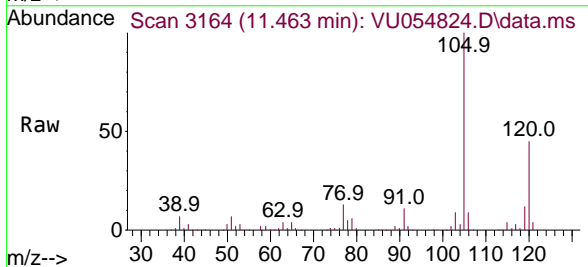
Instrument :
 MSVOA_U
 ClientSampleId :
 VSTD050107

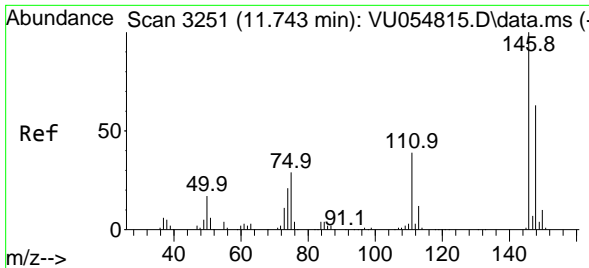
Tgt Ion:105 Resp: 197509
 Ion Ratio Lower Upper
 105 100
 120 48.8 38.0 57.0



#63
 1,2,4-Trimethylbenzene
 Concen: 46.699 ug/L
 RT: 11.463 min Scan# 3164
 Delta R.T. 0.000 min
 Lab File: VU054824.D
 Acq: 19 Jul 2023 16:57

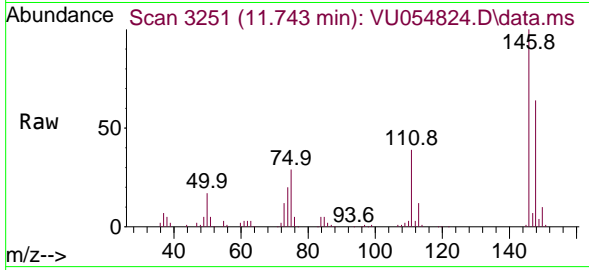
Tgt Ion:105 Resp: 181174
 Ion Ratio Lower Upper
 105 100
 120 44.7 36.2 54.2



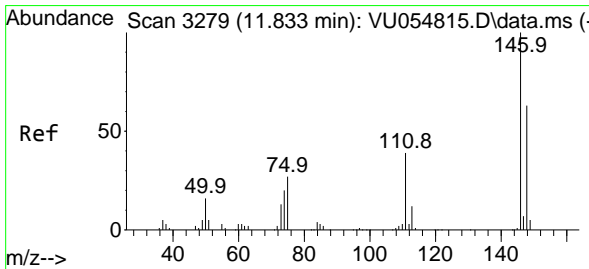
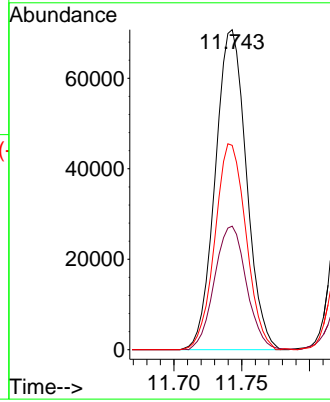
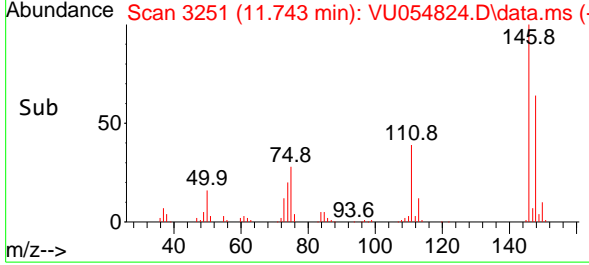


#64
 1,3-Dichlorobenzene
 Concen: 51.241 ug/L
 RT: 11.743 min Scan# 31
 Delta R.T. 0.000 min
 Lab File: VU054824.D
 Acq: 19 Jul 2023 16:57

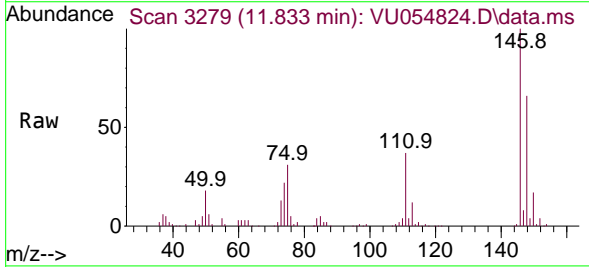
Instrument :
 MSVOA_U
 ClientSampleId :
 VSTD050107



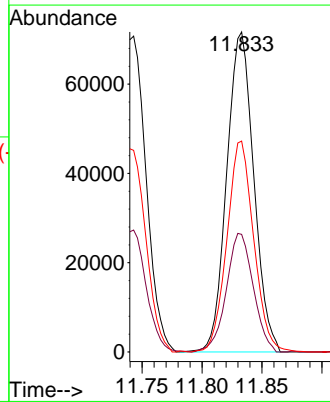
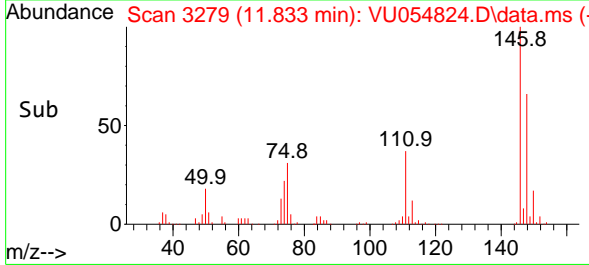
Tgt Ion:146 Resp: 112944
 Ion Ratio Lower Upper
 146 100
 111 38.6 25.2 46.8
 148 67.6 44.4 82.4

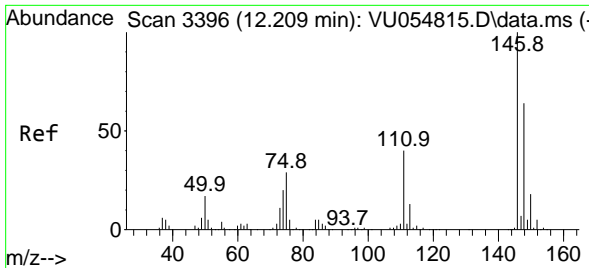


#65
 1,4-Dichlorobenzene
 Concen: 50.664 ug/L
 RT: 11.833 min Scan# 3279
 Delta R.T. 0.000 min
 Lab File: VU054824.D
 Acq: 19 Jul 2023 16:57



Tgt Ion:146 Resp: 112478
 Ion Ratio Lower Upper
 146 100
 111 37.5 24.1 44.8
 148 65.1 41.0 76.2

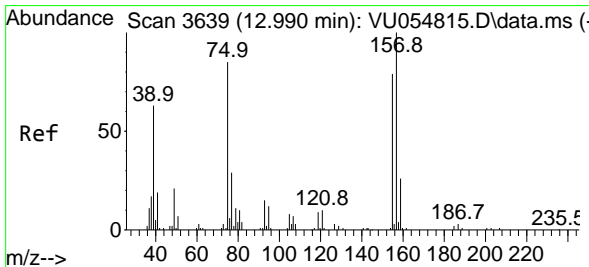
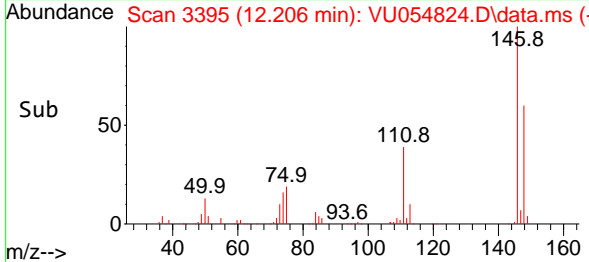
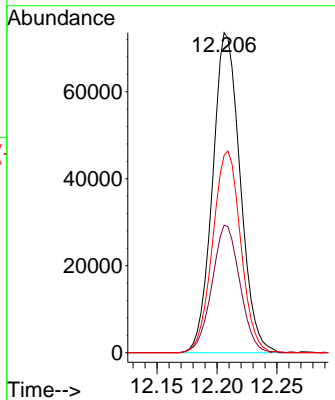
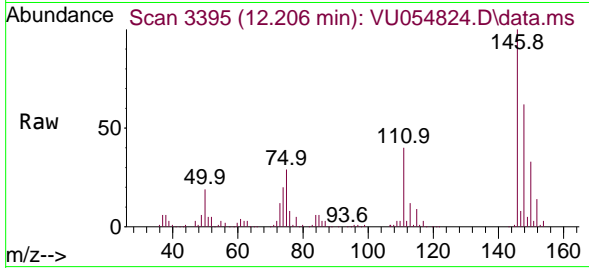




#67
 1,2-Dichlorobenzene
 Concen: 53.133 ug/L
 RT: 12.206 min Scan# 3111
 Delta R.T. -0.003 min
 Lab File: VU054824.D
 Acq: 19 Jul 2023 16:57

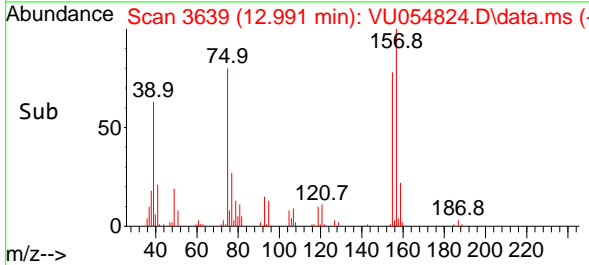
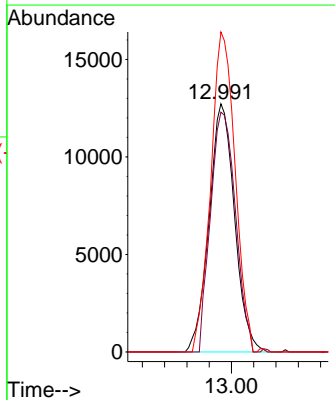
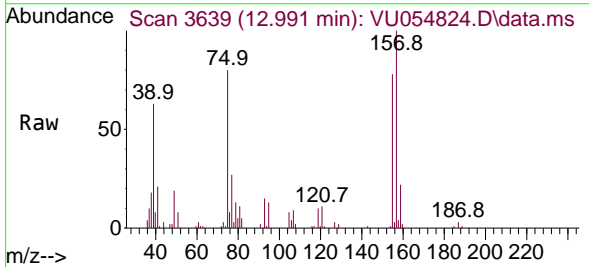
Instrument : MSVOA_U
 ClientSampleId : VSTD050107

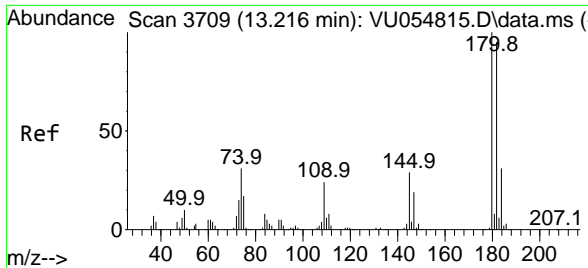
Tgt Ion	Resp	Lower	Upper
146	117646		
111	40.1	31.5	47.3
148	57.3	53.5	80.3



#68
 1,2-Dibromo-3-chloropropane
 Concen: 53.922 ug/L
 RT: 12.991 min Scan# 3639
 Delta R.T. 0.000 min
 Lab File: VU054824.D
 Acq: 19 Jul 2023 16:57

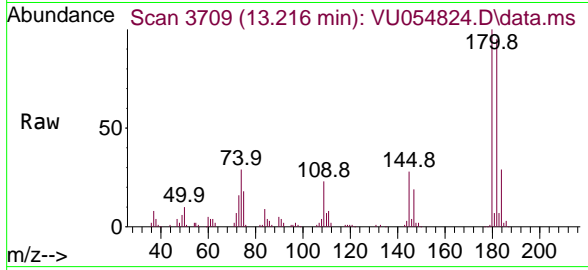
Tgt Ion	Resp	Lower	Upper
75	20228		
155	91.5	80.6	121.0
157	117.3	106.5	159.7





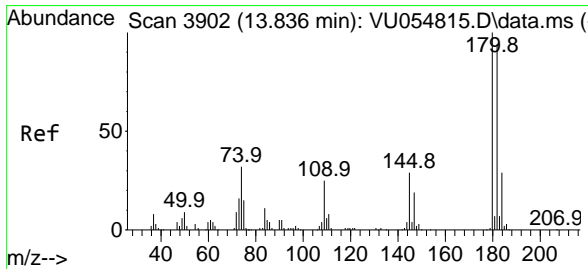
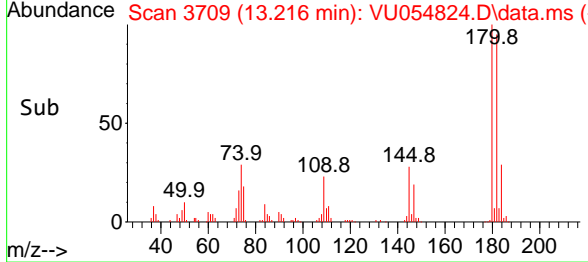
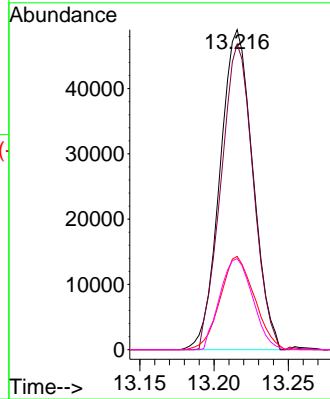
#69
 1,3,5-Trichlorobenzene
 Concen: 51.160 ug/L
 RT: 13.216 min Scan# 31
 Delta R.T. 0.000 min
 Lab File: VU054824.D
 Acq: 19 Jul 2023 16:57

Instrument :
 MSVOA_U
 ClientSampleId :
 VSTD050107



Tgt Ion:180 Resp: 75591

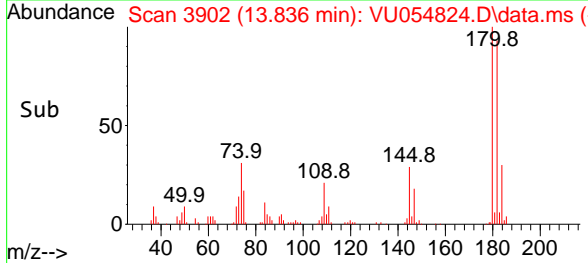
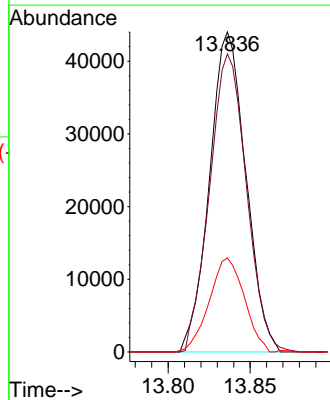
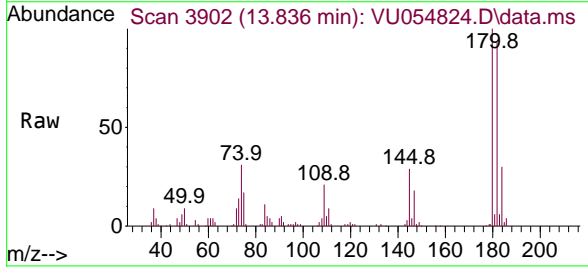
Ion	Ratio	Lower	Upper
180	100		
182	93.2	76.7	115.1
184	30.3	23.4	35.0
145	28.4	22.6	33.8

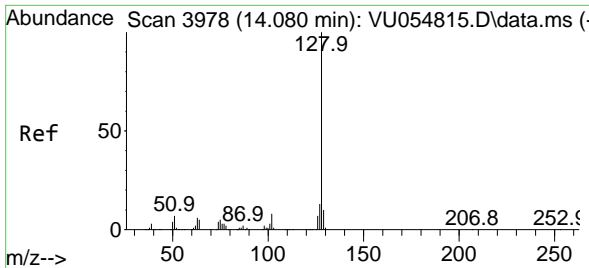


#70
 1,2,4-trichlorobenzene
 Concen: 52.987 ug/L
 RT: 13.836 min Scan# 3902
 Delta R.T. 0.000 min
 Lab File: VU054824.D
 Acq: 19 Jul 2023 16:57

Tgt Ion:180 Resp: 67590

Ion	Ratio	Lower	Upper
180	100		
182	94.5	76.8	115.2
145	28.4	23.0	34.6



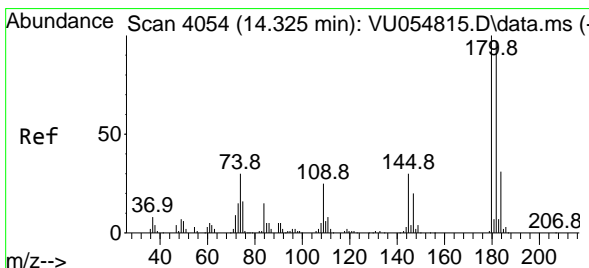
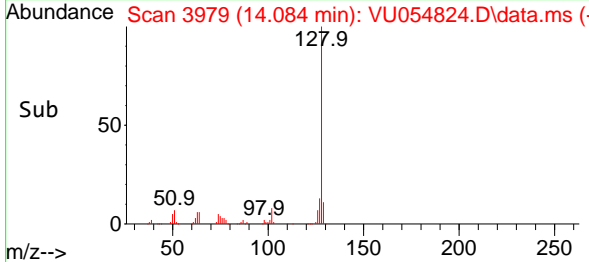
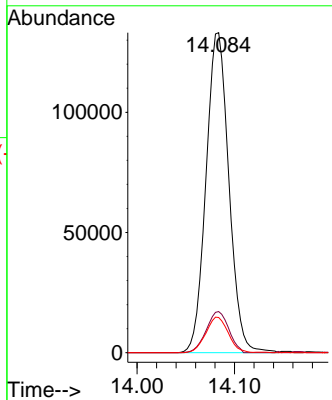
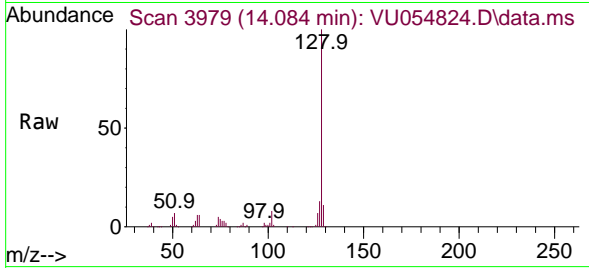


#71
 Naphthalene
 Concen: 51.804 ug/L
 RT: 14.084 min Scan# 3978
 Delta R.T. 0.003 min
 Lab File: VU054824.D
 Acq: 19 Jul 2023 16:57

Instrument : MSVOA_U
 ClientSampleId : VSTD050107

Tgt Ion:128 Resp: 216888

Ion	Ratio	Lower	Upper
128	100		
127	12.7	10.0	15.0
129	10.9	8.6	13.0



#72
 1,2,3-Trichlorobenzene
 Concen: 53.671 ug/L
 RT: 14.325 min Scan# 4054
 Delta R.T. 0.000 min
 Lab File: VU054824.D
 Acq: 19 Jul 2023 16:57

Tgt Ion:180 Resp: 66668

Ion	Ratio	Lower	Upper
180	100		
182	97.9	76.6	115.0
145	32.5	25.4	38.2

