

Data Path : Z:\VOASRV\HPCHEM1\MSVOA U\DATA\VU072019\  
 Data File : VU033348.D  
 Acq On : 19 Jul 2019 23:30  
 Operator : JC/SP  
 Sample : K3890-11  
 Misc : 25.0mL/MSVOA U/WATER  
 ALS Vial : 31 Sample Multiplier: 1

Instrument :  
 MSVOA\_U  
 ClientSampleId :  
 A52W7

Integration Parameters: rteint.p  
 Integrator: RTE  
 Smoothing : ON  
 Sampling : 1  
 Start Thrs: 0.1  
 Stop Thrs : 0

Filtering: 5  
 Min Area: 3 % of largest Peak  
 Max Peaks: 100  
 Peak Location: TOP

If leading or trailing edge < 100 prefer < Baseline drop else tangent >  
 Peak separation: 5

Method : Z:\VOASRV\HPCHEM1\MSVOA\_U\METHOD\SOMUTR071619WMA.M  
 Title : TRACE VOA SOM01.0

Signal : TIC

peak #	R.T. min	first scan	max scan	last scan	PK TY	peak height	corr. area	corr. % max.	% of total
1	1.174	21	26	35	rVB2	11495	11792	2.46%	0.279%
2	1.389	85	93	106	rBV	66103	72411	15.14%	1.715%
3	1.537	131	139	145	rBV3	6797	9375	1.96%	0.222%
4	1.672	173	181	194	rBV	60504	77852	16.27%	1.844%
5	2.261	352	364	371	rBV	126333	187601	39.22%	4.444%
6	2.309	371	379	400	rVB	133670	215410	45.03%	5.103%
7	2.431	412	417	427	rVB2	5723	7763	1.62%	0.184%
8	2.820	529	538	549	rBV4	2635	5412	1.13%	0.128%
9	4.167	944	957	975	rBV	69666	186154	38.91%	4.410%
10	4.254	976	984	1007	rVB	23580	59091	12.35%	1.400%
11	4.624	1082	1099	1125	rBV3	109169	268995	56.23%	6.372%
12	5.315	1292	1314	1341	rBV3	142832	402095	84.05%	9.525%
13	5.865	1471	1485	1506	rBV	127293	251157	52.50%	5.950%
14	6.309	1610	1623	1640	rBV	95600	193909	40.53%	4.593%
15	7.209	1891	1903	1922	rBV	46695	83335	17.42%	1.974%
16	7.450	1968	1978	1993	rBV3	15519	29992	6.27%	0.710%
17	7.547	1996	2008	2027	rBV	172911	301575	63.04%	7.144%
18	7.833	2084	2097	2112	rBV	29752	52506	10.98%	1.244%
19	8.299	2230	2242	2275	rBV	252053	478390	100.00%	11.333%
20	8.453	2280	2290	2306	rVB2	20512	36233	7.57%	0.858%
21	9.074	2471	2483	2507	rBV	200152	338882	70.84%	8.028%
22	10.415	2889	2900	2921	rBV	84563	137884	28.82%	3.266%
23	11.128	3114	3122	3138	rBV4	5613	9984	2.09%	0.237%
24	11.469	3216	3228	3251	rBV	196042	320324	66.96%	7.588%
25	11.739	3302	3312	3330	rBV2	36033	82428	17.23%	1.953%
26	11.845	3334	3345	3364	rVB	192575	319002	66.68%	7.557%
27	12.559	3557	3567	3579	rBV7	7021	13845	2.89%	0.328%
28	12.627	3581	3588	3598	rVV9	5654	10537	2.20%	0.250%
29	12.688	3598	3607	3617	rVB3	7793	12143	2.54%	0.288%
30	13.109	3729	3738	3748	rVB4	10690	16068	3.36%	0.381%
31	13.733	3920	3932	3948	rBV	16307	29243	6.11%	0.693%

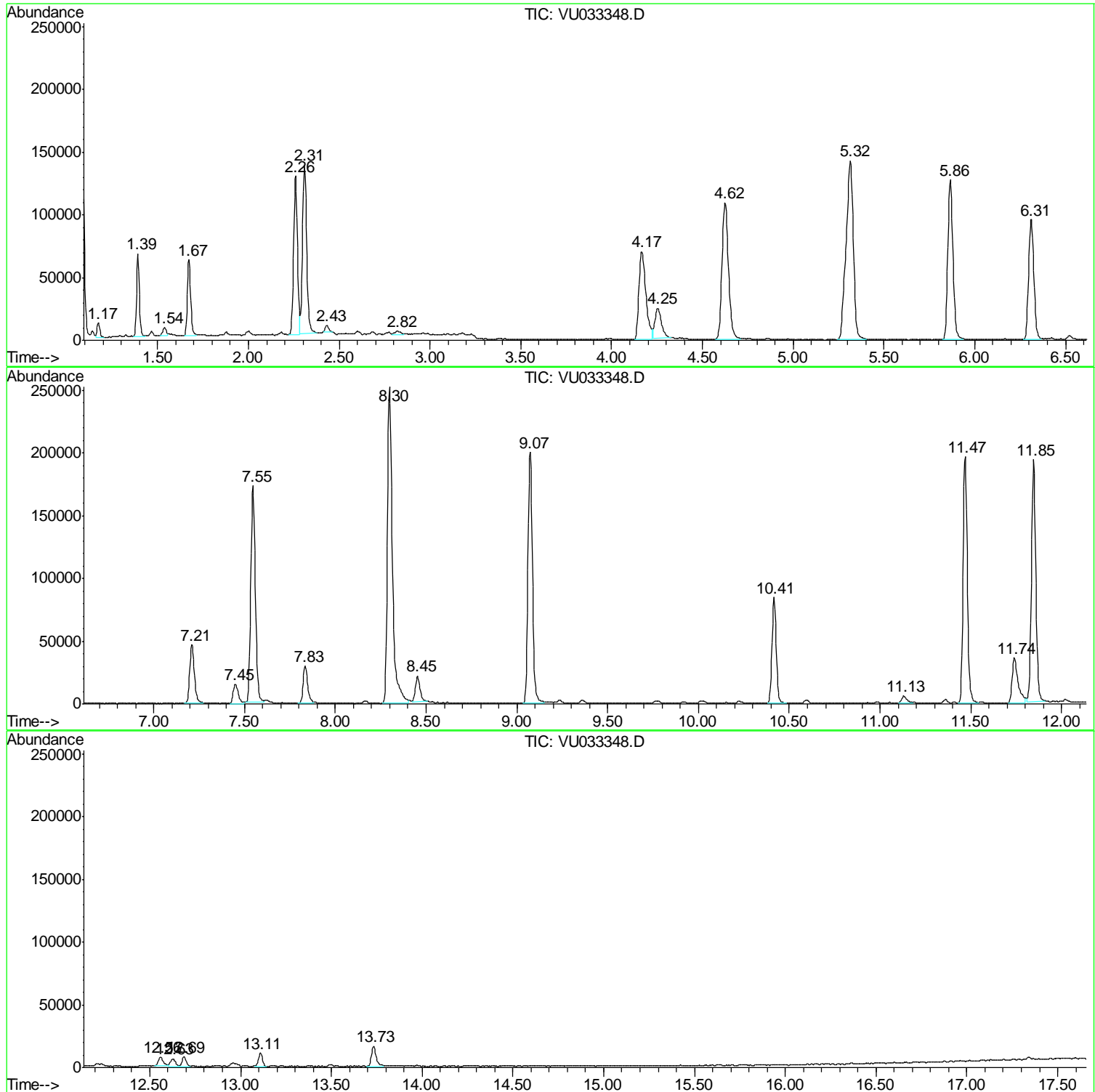
Sum of corrected areas: 4221388

Data Path : Z:\VOASRV\HPCHEM1\MSVOA U\DATA\VU072019\  
Data File : VU033348.D  
Acq On : 19 Jul 2019 23:30  
Operator : JC/SP  
Sample : K3890-11  
Misc : 25.0mL/MSVOA U/WATER  
ALS Vial : 31 Sample Multiplier: 1

Instrument :  
MSVOA\_U  
ClientSampled :  
A52W7

Quant Method : Z:\VOASRV\HPCHEM1\MSVOA\_U\METHOD\SOMUTR071619WMA.M  
Quant Title : TRACE VOA SOM01.0

TIC Library : C:\DATABASE\NIST11.L  
TIC Integration Parameters: LSCINT.P



Data Path : Z:\VOASRV\HPCHEM1\MSVOA U\DATA\VU072019\  
 Data File : VU033348.D  
 Acq On : 19 Jul 2019 23:30  
 Operator : JC/SP  
 Sample : K3890-11  
 Misc : 25.0mL/MSVOA U/WATER  
 ALS Vial : 31 Sample Multiplier: 1

Instrument :  
 MSVOA\_U  
 ClientSampled :  
 A52W7

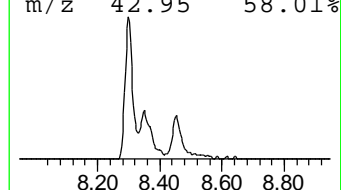
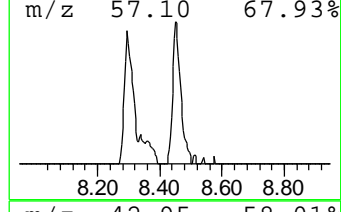
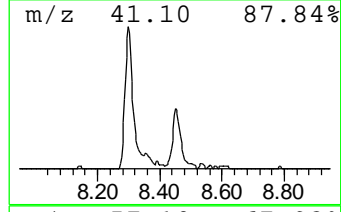
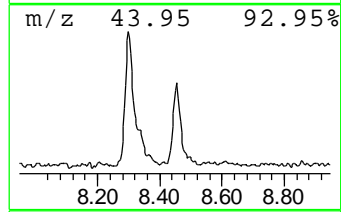
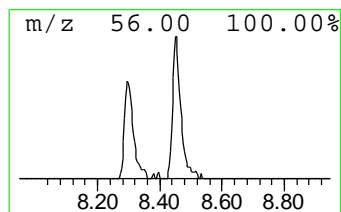
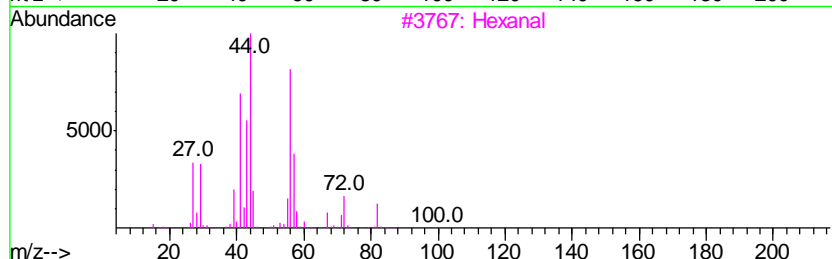
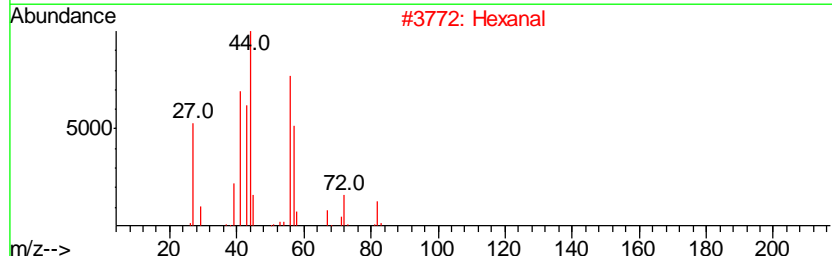
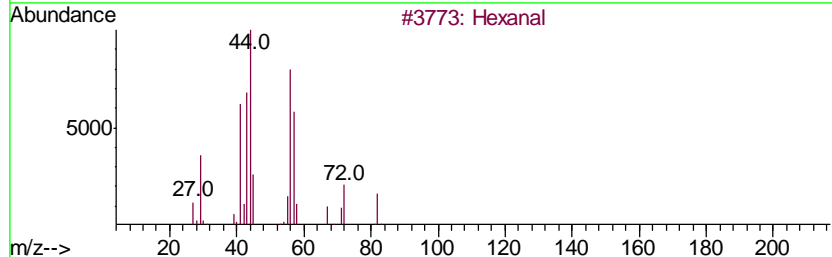
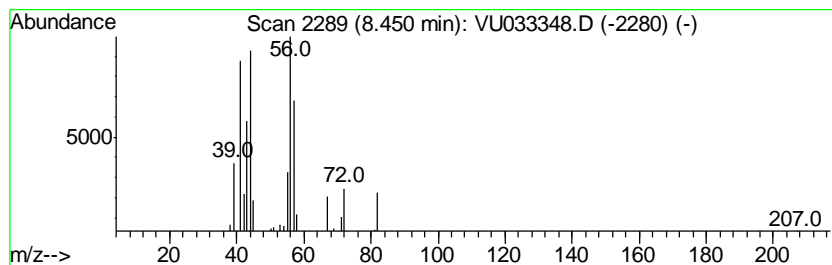
Quant Method : Z:\VOASRV\HPCHEM1\MSVOA\_U\METHOD\SOMUTR071619WMA.M  
 Quant Title : TRACE VOA SOM01.0

TIC Library : C:\DATABASE\NIST11.L  
 TIC Integration Parameters: LSCINT.P

\*\*\*\*\*  
 Peak Number 2 Hexanal Concentration Rank 3

R.T.	EstConc	Area	Relative to ISTD	R.T.
8.45	0.53 ug/L	36233	Chlorobenzene-d5	9.07

Hit#	of	Tentative ID	MW	MolForm	CAS#	Qual
1	5	Hexanal	100	C6H12O	000066-25-1	64
2		Hexanal	100	C6H12O	000066-25-1	64
3		Hexanal	100	C6H12O	000066-25-1	59
4		Hexanal	100	C6H12O	000066-25-1	59
5		2-Hexen-1-ol, (E)-	100	C6H12O	000928-95-0	27



Data Path : Z:\VOASRV\HPCHEM1\MSVOA U\DATA\VU072019\  
 Data File : VU033348.D  
 Acq On : 19 Jul 2019 23:30  
 Operator : JC/SP  
 Sample : K3890-11  
 Misc : 25.0mL/MSVOA U/WATER  
 ALS Vial : 31 Sample Multiplier: 1

Instrument :  
 MSVOA\_U  
 ClientSampleID :  
 A52W7

Quant Method : Z:\VOASRV\HPCHEM1\MSVOA\_U\METHOD\SOMUTR071619WMA.M  
 Quant Title : TRACE VOA SOM01.0

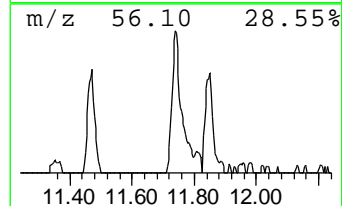
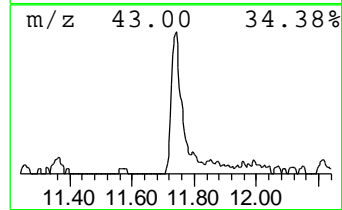
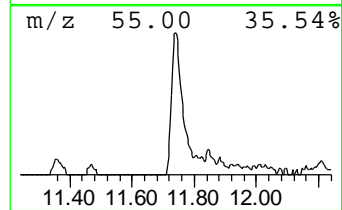
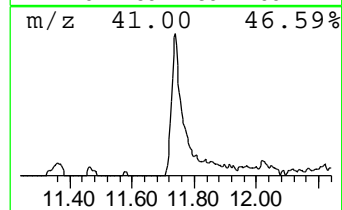
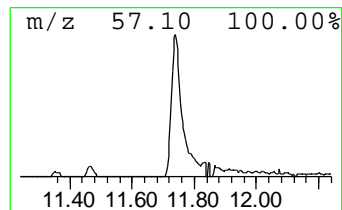
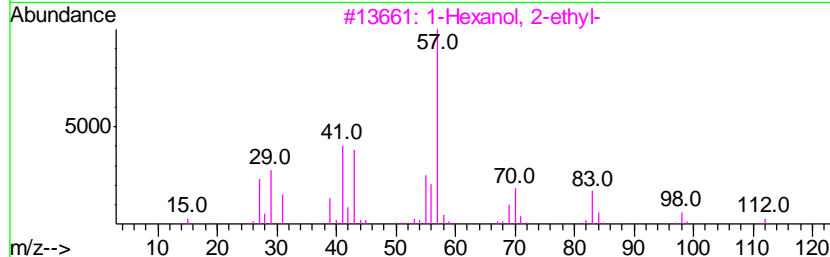
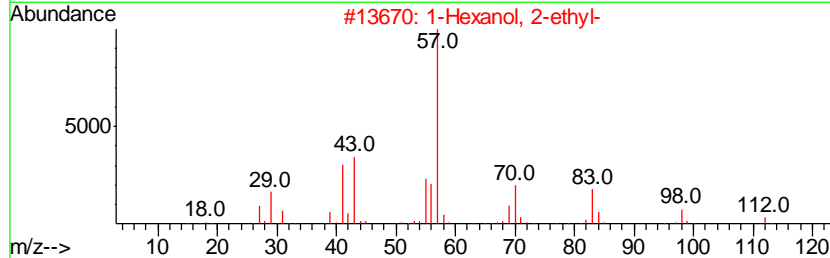
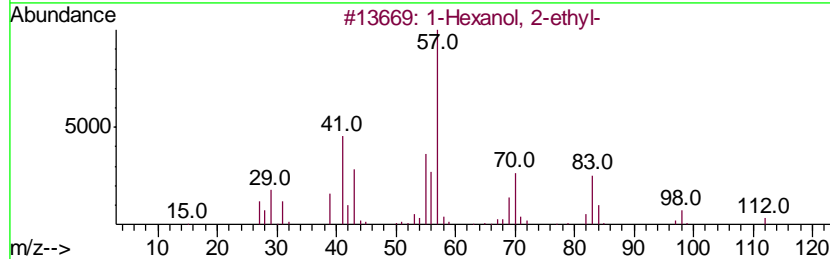
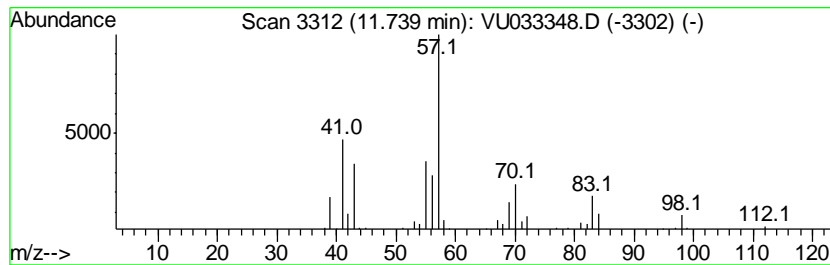
TIC Library : C:\DATABASE\NIST11.L  
 TIC Integration Parameters: LSCINT.P

\*\*\*\*\*  
 Peak Number 3 1-Hexanol, 2-ethyl- Concentration Rank 2

R.T.	EstConc	Area	Relative to ISTD	R.T.
11.74	1.29 ug/L	82428	1,4-Dichlorobenzene-d4	11.47

Hit#	of	Tentative ID	MW	MolForm	CAS#	Qual
1	5	1-Hexanol, 2-ethyl-	130	C8H18O	000104-76-7	83
2		1-Hexanol, 2-ethyl-	130	C8H18O	000104-76-7	78
3		1-Hexanol, 2-ethyl-	130	C8H18O	000104-76-7	72
4		1-Pentanol, 2-ethyl-4-methyl-	130	C8H18O	000106-67-2	72
5		2-Propyl-1-pentanol	130	C8H18O	058175-57-8	64



Data Path : Z:\VOASRV\HPCHEM1\MSVOA U\DATA\VU072019\  
 Data File : VU033348.D  
 Acq On : 19 Jul 2019 23:30  
 Operator : JC/SP  
 Sample : K3890-11  
 Misc : 25.0mL/MSVOA U/WATER  
 ALS Vial : 31 Sample Multiplier: 1

Instrument :  
 MSVOA\_U  
 ClientSampleID :  
 A52W7

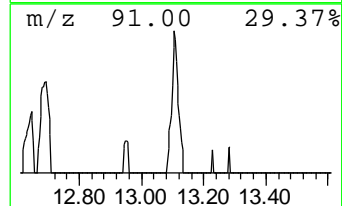
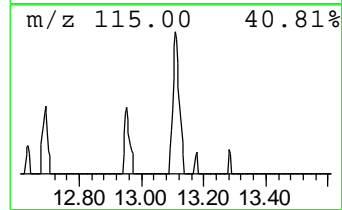
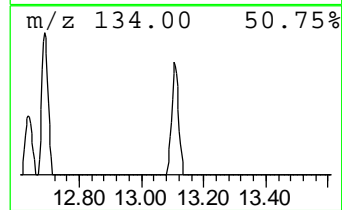
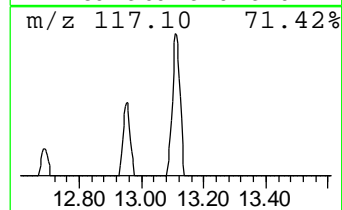
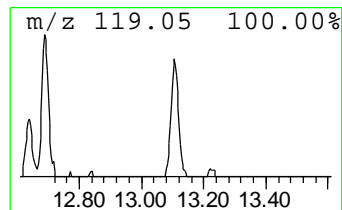
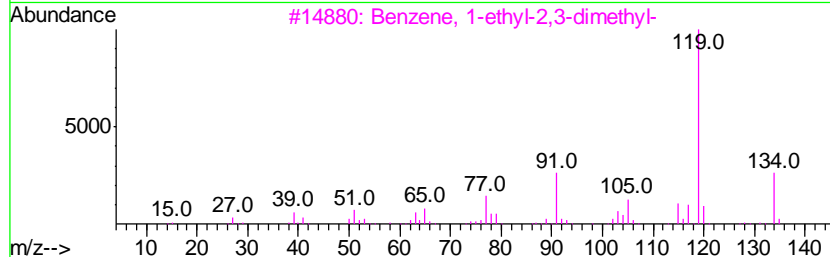
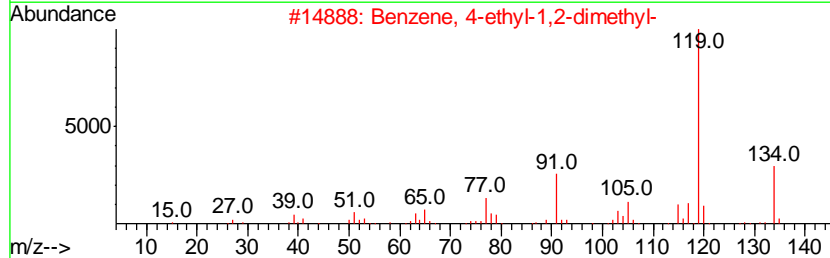
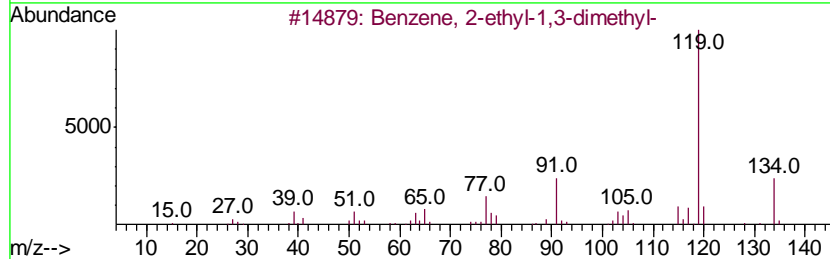
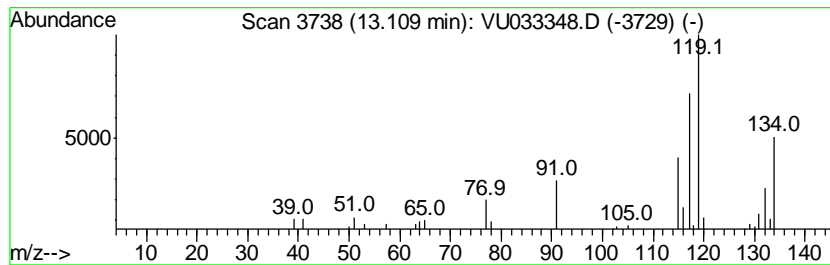
Quant Method : Z:\VOASRV\HPCHEM1\MSVOA\_U\METHOD\SOMUTR071619WMA.M  
 Quant Title : TRACE VOA SOM01.0

TIC Library : C:\DATABASE\NIST11.L  
 TIC Integration Parameters: LSCINT.P

\*\*\*\*\*  
 Peak Number 4 unknown-01 Concentration Rank 4

R.T.	EstConc	Area	Relative to ISTD	R.T.
13.11	0.25 ug/L	16068	1,4-Dichlorobenzene-d4	11.47

Hit#	of	Tentative ID	MW	MolForm	CAS#	Qual
1	5	Benzene, 2-ethyl-1,3-dimethyl-	134	C10H14	002870-04-4	43
2		Benzene, 4-ethyl-1,2-dimethyl-	134	C10H14	000934-80-5	43
3		Benzene, 1-ethyl-2,3-dimethyl-	134	C10H14	000933-98-2	43
4		Benzene, 1-ethyl-2,4-dimethyl-	134	C10H14	000874-41-9	43
5		Benzene, 1-methyl-2-(2-propenyl)-	132	C10H12	001587-04-8	42



Data Path : Z:\VOASRV\HPCHEM1\MSVOA\_U\DATA\VU072019\  
Data File : VU033348.D  
Acq On : 19 Jul 2019 23:30  
Operator : JC/SP  
Sample : K3890-11  
Misc : 25.0mL/MSVOA\_U/WATER  
ALS Vial : 31 Sample Multiplier: 1

Instrument :  
MSVOA\_U  
ClientSampleId :  
A52W7

Quant Method : Z:\VOASRV\HPCHEM1\MSVOA\_U\METHOD\SOMUTR071619WMA.M  
Quant Title : TRACE VOA SOM01.0

TIC Library : C:\DATABASE\NIST11.L  
TIC Integration Parameters: LSCINT.P

TIC Top Hit name	RT	EstConc	Units	Response	--Internal Standard--			
					#	RT	Resp	Conc
Hexanal	8.45	0.5	ug/L	36233	2	9.07	338882	5.0
1-Hexanol, 2-ethyl-	11.74	1.3	ug/L	82428	3	11.47	320324	5.0
unknown-01	13.11	0.3	ug/L	16068	3	11.47	320324	5.0