

Data Path : Z:\voasrv\HPCHEM1\MSVOA_U\Data\VU072021\
 Data File : VU044370.D
 Acq On : 20 Jul 2021 12:53
 Operator : SY/MD
 Sample : M3035-07DL 5X
 Misc : 25.0mL/MSVOA_U/WATER
 ALS Vial : 6 Sample Multiplier: 1

Instrument :
 MSVOA_U
 ClientSampled :

Quant Time: Jul 21 01:25:14 2021
 Quant Method : Z:\voasrv\HPCHEM1\MSVOA_U\Method\524U071621DW.M
 Quant Title : METHOD 524.2 VOLATILES DRINKING WATER
 QLast Update : Fri Jul 16 14:36:39 2021
 Response via : Initial Calibration

Compound	R.T.	QIon	Response	Conc Units	Dev(Min)

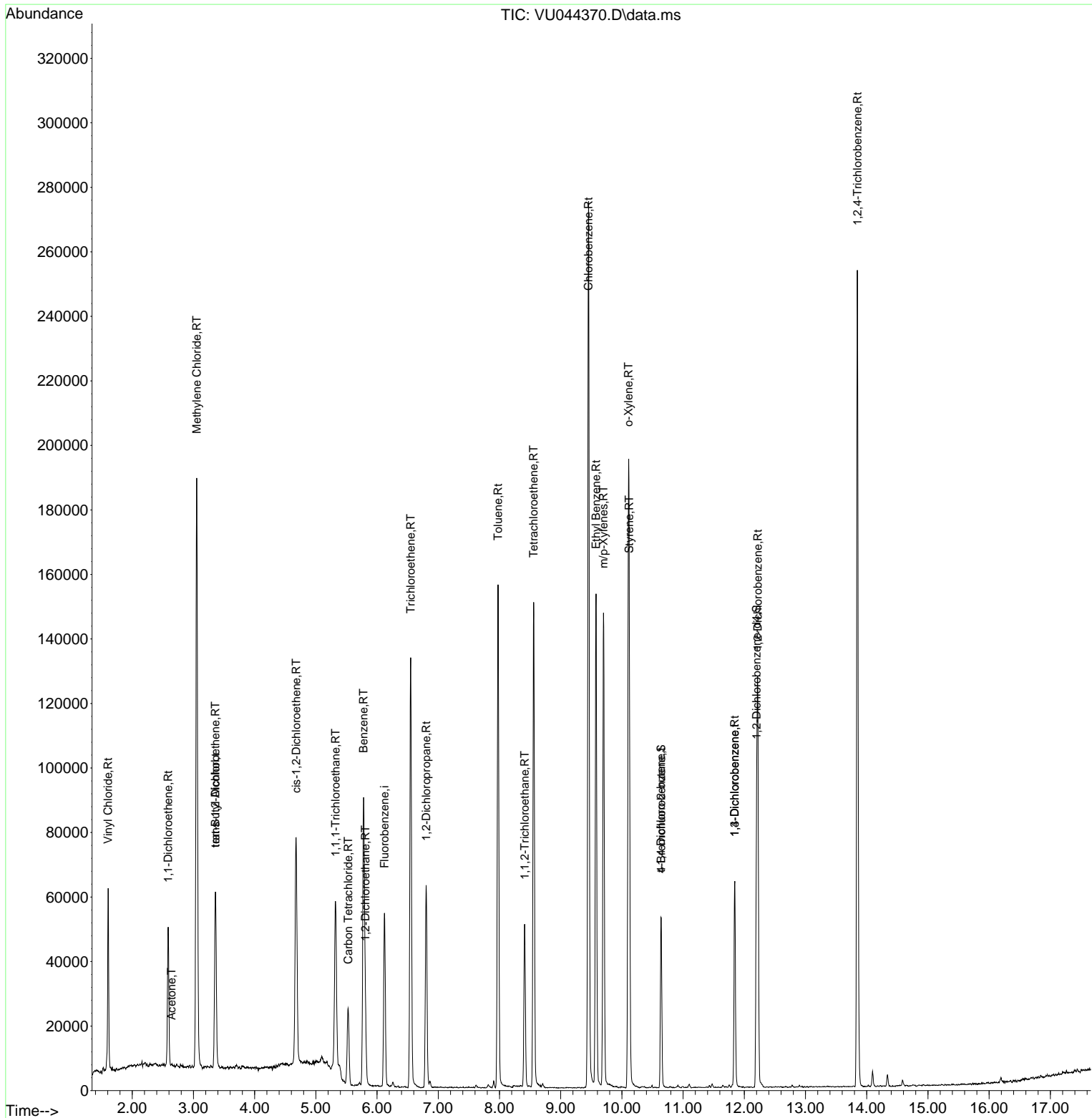
Internal Standards					
1) Fluorobenzene	6.121	96	49675	1.000 ug/l	# 0.00
System Monitoring Compounds					
57) 4-Bromofluorobenzene	10.642	95	20143	1.005 ug/l	0.00
Spiked Amount	1.000		Recovery	=	100.000%
68) 1,2-Dichlorobenzene-d4	12.201	152	18847	0.964 ug/l	0.00
Spiked Amount	1.000		Recovery	=	96.000%
Target Compounds					
					Qvalue
4) Vinyl Chloride	1.607	62	37982	1.995 ug/l	98
9) 1,1-Dichloroethene	2.587	96	14308	1.128 ug/l	93
13) Acetone	2.642	43	348	0.240 ug/l	# 44
15) Methylene Chloride	3.054	84	86766	4.819 ug/l	94
16) trans-1,2-Dichloroethene	3.359	96	23127	1.634 ug/l	97
22) cis-1,2-Dichloroethene	4.677	96	35800	2.315 ug/l	86
24) tert-Butyl Alcohol	3.359	59	921	1.458 ug/l	# 85
28) 1,1,1-Trichloroethane	5.320	97	37766	1.776 ug/l	97
30) Carbon Tetrachloride	5.526	117	16301	0.919 ug/l	100
35) Benzene	5.780	78	85371	1.454 ug/l	99
36) 1,2-Dichloroethane	5.809	62	18859	1.119 ug/l	99
37) Trichloroethene	6.549	130	45743	3.099 ug/l	91
38) 1,2-Dichloropropane	6.803	63	24820	1.597 ug/l	99
46) t-1,4-Dichloro-2-butene	10.639	75	9722	2.190 ug/l	# 22
49) Toluene	7.976	92	67219	1.819 ug/l	99
52) 1,1,2-Trichloroethane	8.410	97	16224	1.428 ug/l	98
58) Tetrachloroethene	8.558	164	33666	2.687 ug/l	97
59) Chlorobenzene	9.455	112	153755	3.936 ug/l	99
63) Ethyl Benzene	9.578	91	112931	1.618 ug/l	98
64) m/p-Xylenes	9.700	106	43308	1.623 ug/l	99
65) o-Xylene	10.108	106	43528	1.691 ug/l	100
66) Styrene	10.121	104	44478	1.003 ug/l	94
82) 1,3-Dichlorobenzene	11.844	146	27227	0.860 ug/l	97
83) 1,4-Dichlorobenzene	11.844	146	27227	0.851 ug/l	97
85) 1,2-Dichlorobenzene	12.220	146	45389	1.479 ug/l	98
87) 1,2,4-Trichlorobenzene	13.847	180	79919	3.682 ug/l	98

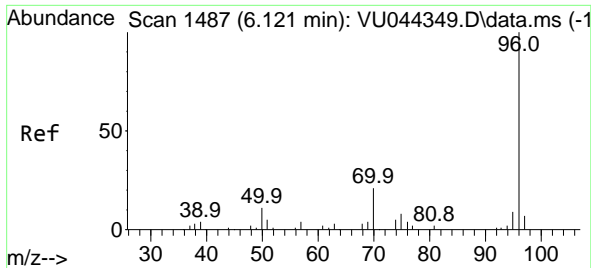
(#) = qualifier out of range (m) = manual integration (+) = signals summed

Data Path : Z:\voasrv\HPCHEM1\MSVOA_U\Data\VU072021\
 Data File : VU044370.D
 Acq On : 20 Jul 2021 12:53
 Operator : SY/MD
 Sample : M3035-07DL 5X
 Misc : 25.0mL/MSVOA_U/WATER
 ALS Vial : 6 Sample Multiplier: 1

Instrument :
 MSVOA_U
 ClientSampled :

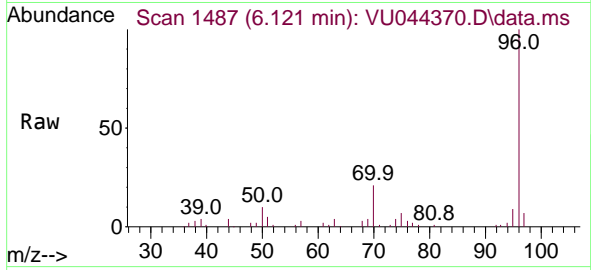
Quant Time: Jul 21 01:25:14 2021
 Quant Method : Z:\voasrv\HPCHEM1\MSVOA_U\Method\524U071621DW.M
 Quant Title : METHOD 524.2 VOLATILES DRINKING WATER
 QLast Update : Fri Jul 16 14:36:39 2021
 Response via : Initial Calibration





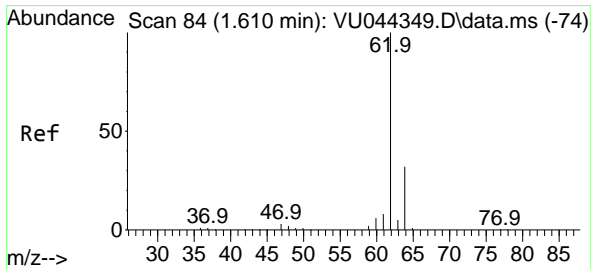
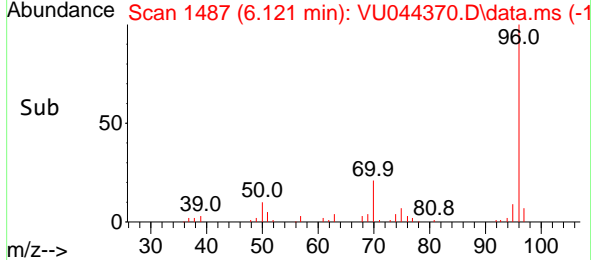
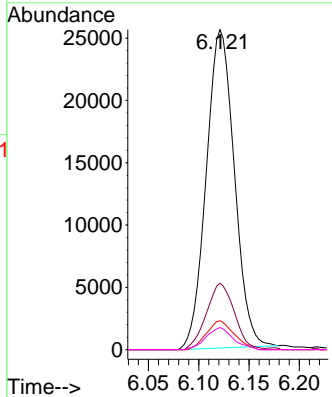
#1
 Fluorobenzene
 Concen: 1.000 ug/l
 RT: 6.121 min Scan# 1487
 Delta R.T. 0.000 min
 Lab File: VU044370.D
 Acq: 20 Jul 2021 12:53

Instrument :
 MSVOA_U
 ClientSampled :

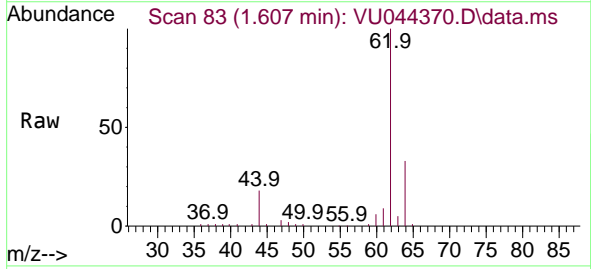


Tgt Ion: 96 Resp: 49675

Ion	Ratio	Lower	Upper
96	100		
70	20.2	16.2	24.2
95	9.0	7.3	10.9
97	6.7	0.0	0.0

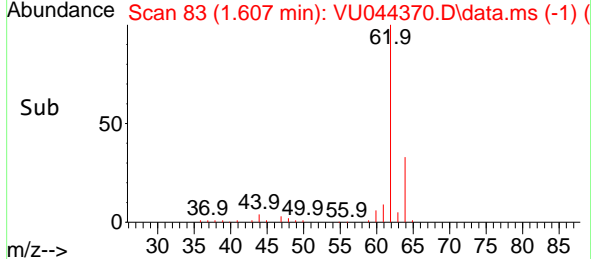
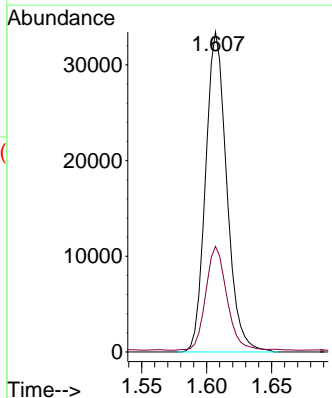


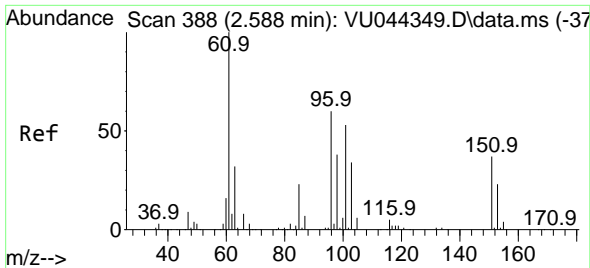
#4
 Vinyl Chloride
 Concen: 1.995 ug/l
 RT: 1.607 min Scan# 83
 Delta R.T. -0.003 min
 Lab File: VU044370.D
 Acq: 20 Jul 2021 12:53



Tgt Ion: 62 Resp: 37982

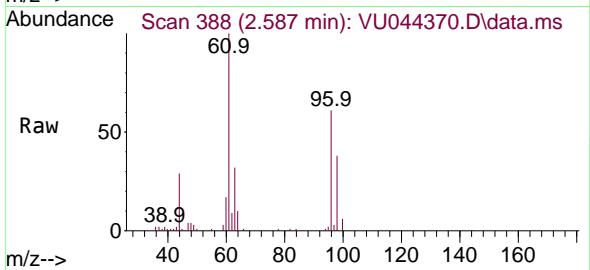
Ion	Ratio	Lower	Upper
62	100		
64	32.3	25.1	37.7





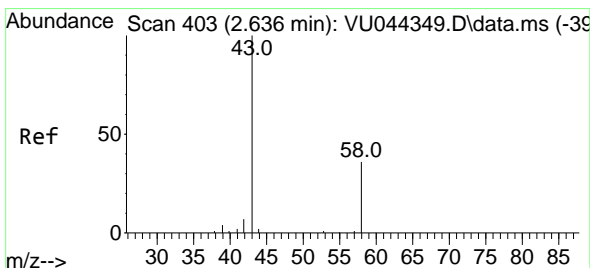
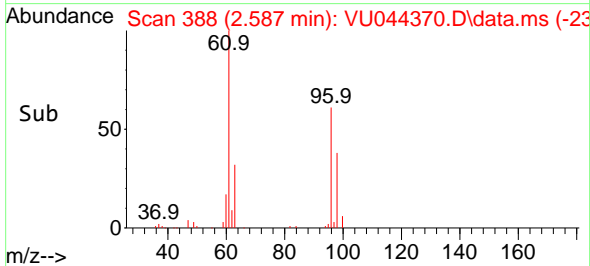
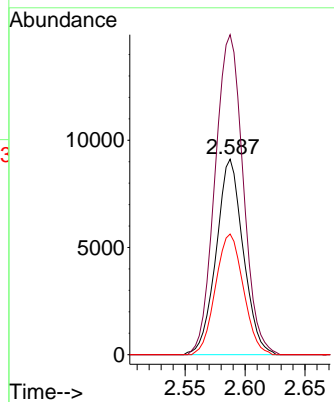
#9
 1,1-Dichloroethene
 Concen: 1.128 ug/l
 RT: 2.587 min Scan# 388
 Delta R.T. -0.000 min
 Lab File: VU044370.D
 Acq: 20 Jul 2021 12:53

Instrument :
 MSVOA_U
 ClientSampled :

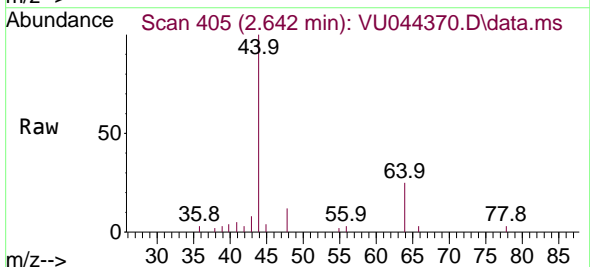


Tgt Ion: 96 Resp: 14308

Ion	Ratio	Lower	Upper
96	100		
61	163.6	0.0	528.0
98	61.7	0.0	127.4

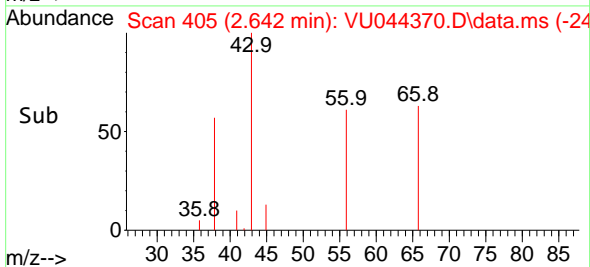
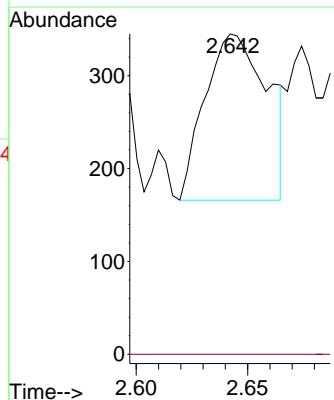


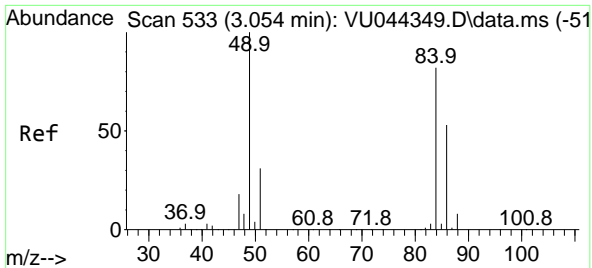
#13
 Acetone
 Concen: 0.240 ug/l
 RT: 2.642 min Scan# 405
 Delta R.T. 0.006 min
 Lab File: VU044370.D
 Acq: 20 Jul 2021 12:53



Tgt Ion: 43 Resp: 348

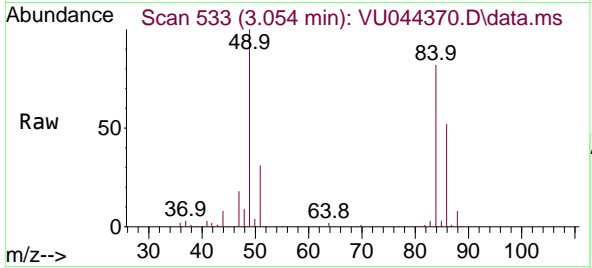
Ion	Ratio	Lower	Upper
43	100		
58	0.0	24.3	36.5#





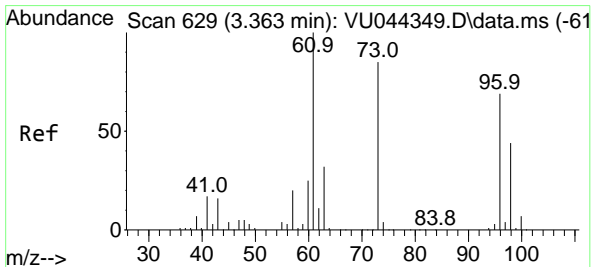
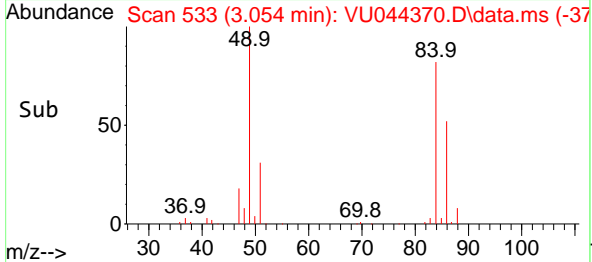
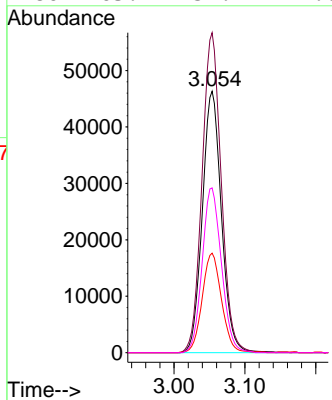
#15
 Methylene Chloride
 Concen: 4.819 ug/l
 RT: 3.054 min Scan# 533
 Delta R.T. -0.000 min
 Lab File: VU044370.D
 Acq: 20 Jul 2021 12:53

Instrument :
 MSVOA_U
 ClientSampled :

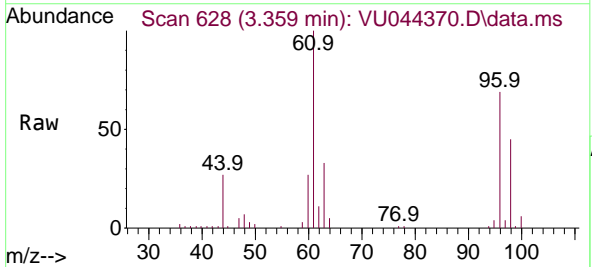


Tgt Ion: 84 Resp: 86766

Ion	Ratio	Lower	Upper
84	100		
49	122.4	106.3	159.5
51	38.1	0.0	81.8
86	63.1	51.4	77.0

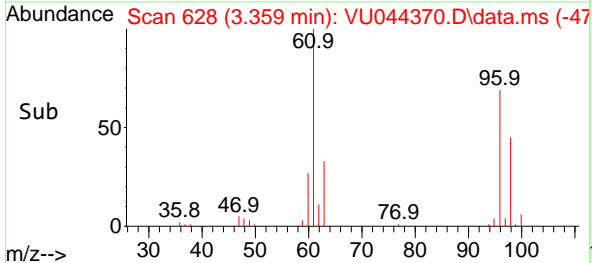
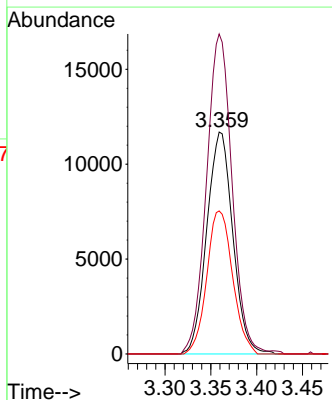


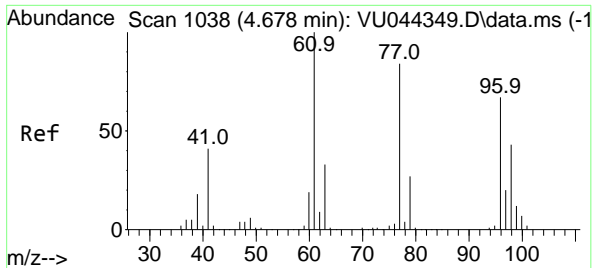
#16
 trans-1,2-Dichloroethene
 Concen: 1.634 ug/l
 RT: 3.359 min Scan# 628
 Delta R.T. -0.003 min
 Lab File: VU044370.D
 Acq: 20 Jul 2021 12:53



Tgt Ion: 96 Resp: 23127

Ion	Ratio	Lower	Upper
96	100		
61	144.2	119.3	178.9
98	64.5	50.8	76.2

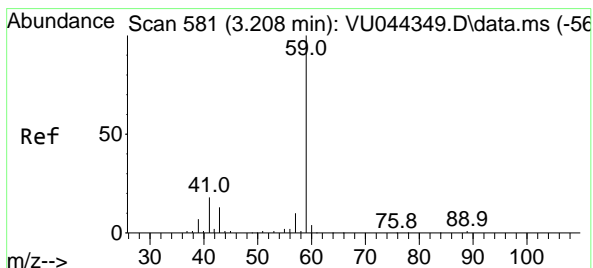
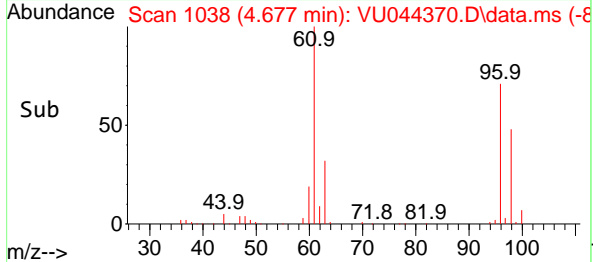
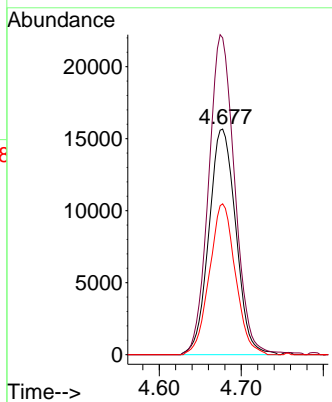
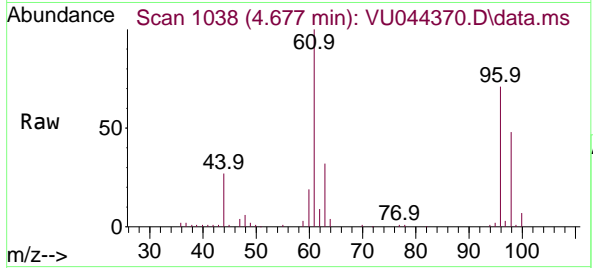




#22
 cis-1,2-Dichloroethene
 Concen: 2.315 ug/l
 RT: 4.677 min Scan# 1038
 Delta R.T. -0.000 min
 Lab File: VU044370.D
 Acq: 20 Jul 2021 12:53

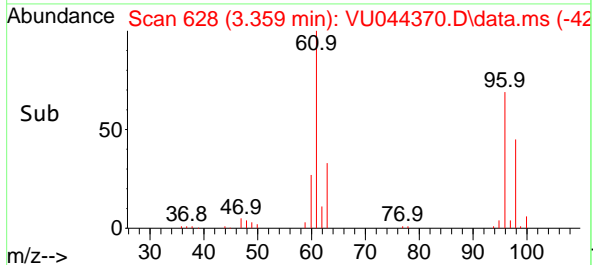
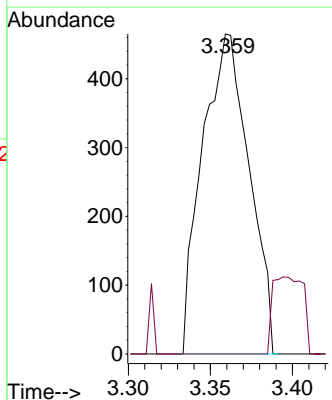
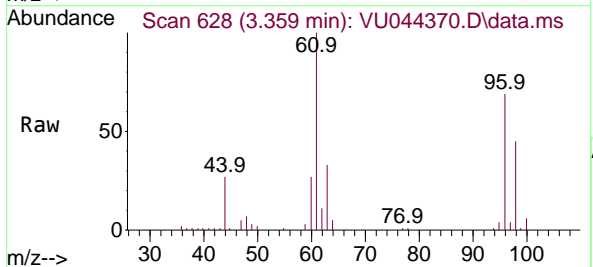
Instrument :
 MSVOA_U
 ClientSampled :

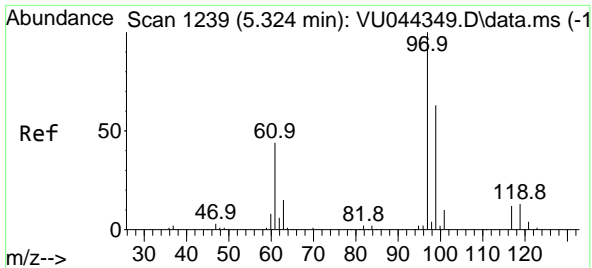
Tgt Ion	Resp	Lower	Upper
96	35800		
96	100		
61	137.7	0.0	407.7
98	64.5	32.5	97.4



#24
 tert-Butyl Alcohol
 Concen: 1.458 ug/l
 RT: 3.359 min Scan# 628
 Delta R.T. 0.151 min
 Lab File: VU044370.D
 Acq: 20 Jul 2021 12:53

Tgt Ion	Resp	Lower	Upper
59	921		
59	100		
57	15.7	8.2	12.4#

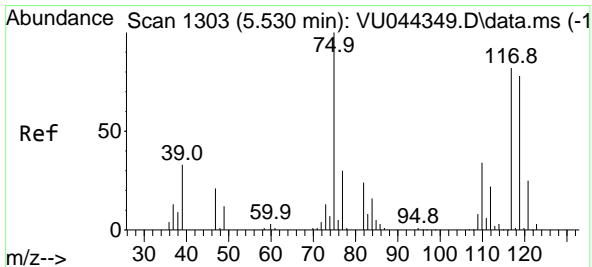
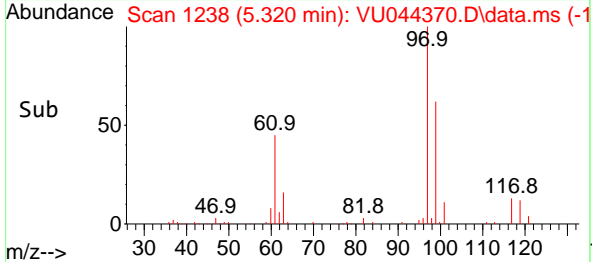
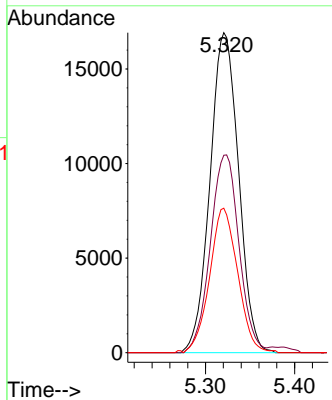
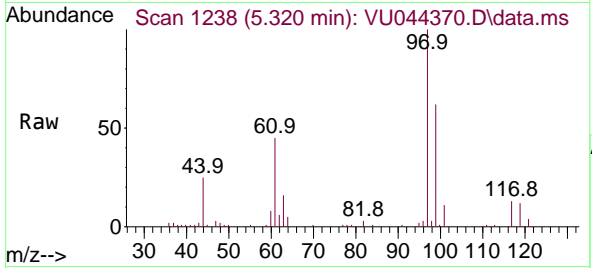




#28
 1,1,1-Trichloroethane
 Concen: 1.776 ug/l
 RT: 5.320 min Scan# 1238
 Delta R.T. -0.003 min
 Lab File: VU044370.D
 Acq: 20 Jul 2021 12:53

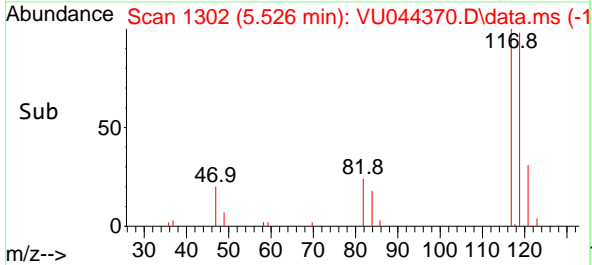
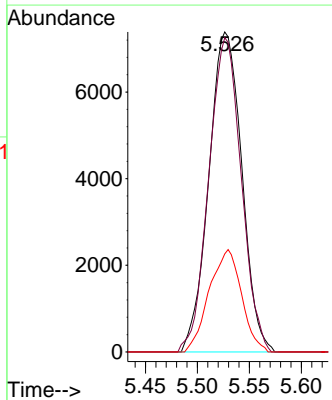
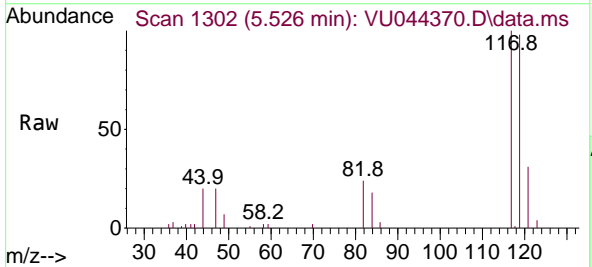
Instrument :
 MSVOA_U
 ClientSampled :

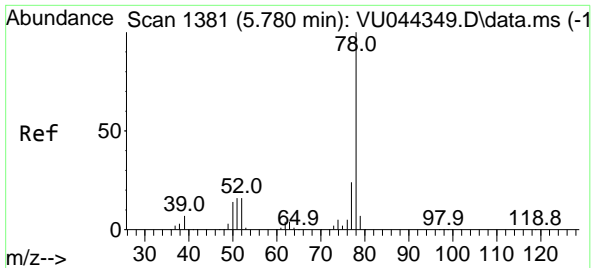
Tgt Ion:	Resp:	Lower	Upper
97	37766		
97	100		
99	62.1	32.0	96.2
61	44.5	23.8	71.5



#30
 Carbon Tetrachloride
 Concen: 0.919 ug/l
 RT: 5.526 min Scan# 1302
 Delta R.T. -0.003 min
 Lab File: VU044370.D
 Acq: 20 Jul 2021 12:53

Tgt Ion:	Resp:	Lower	Upper
117	16301		
117	100		
119	96.8	77.0	115.6
121	30.2	24.2	36.4

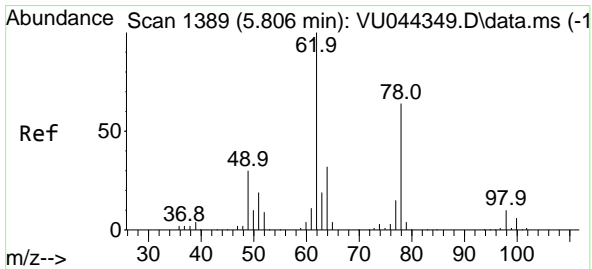
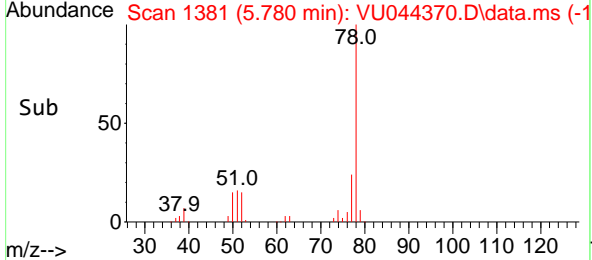
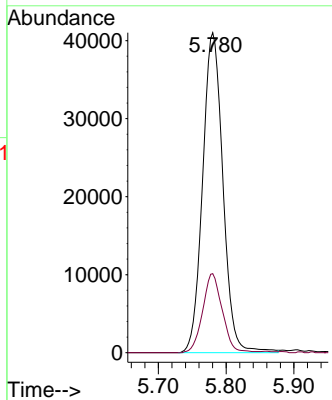
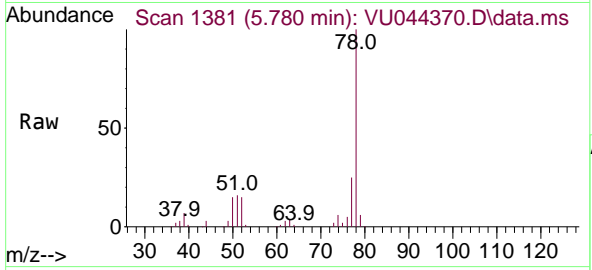




#35
Benzene
Concen: 1.454 ug/l
RT: 5.780 min Scan# 1381
Delta R.T. -0.000 min
Lab File: VU044370.D
Acq: 20 Jul 2021 12:53

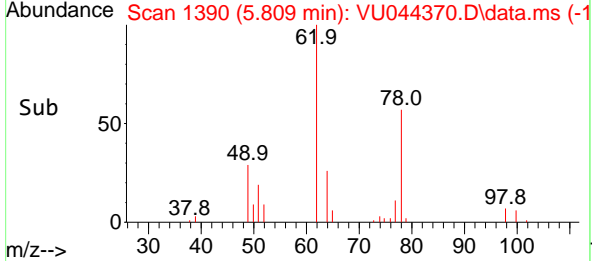
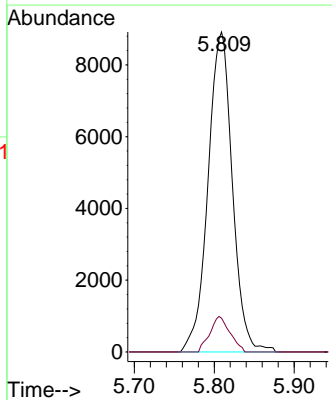
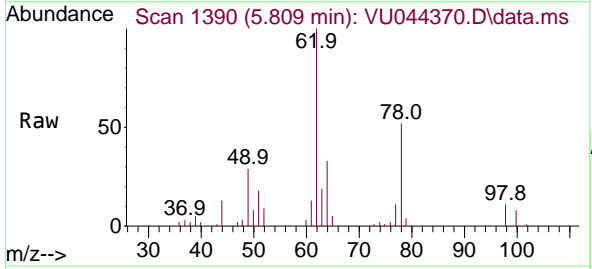
Instrument : MSVOA_U
ClientSampled :

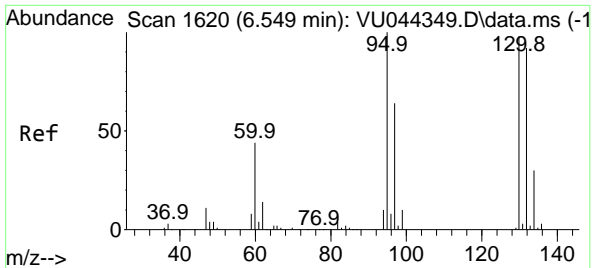
Tgt Ion: 78 Resp: 85371
Ion Ratio Lower Upper
78 100
77 24.7 19.4 29.0



#36
1,2-Dichloroethane
Concen: 1.119 ug/l
RT: 5.809 min Scan# 1390
Delta R.T. 0.003 min
Lab File: VU044370.D
Acq: 20 Jul 2021 12:53

Tgt Ion: 62 Resp: 18859
Ion Ratio Lower Upper
62 100
98 9.1 7.0 10.6

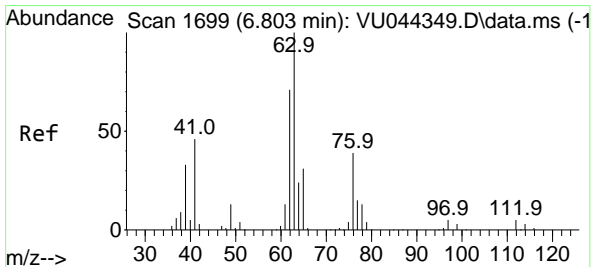
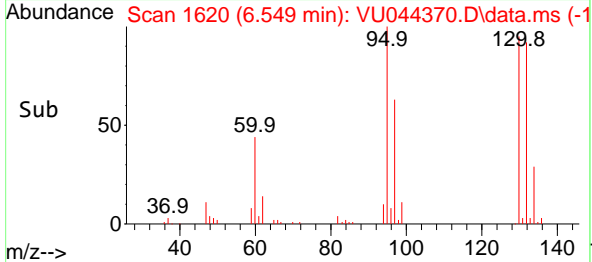
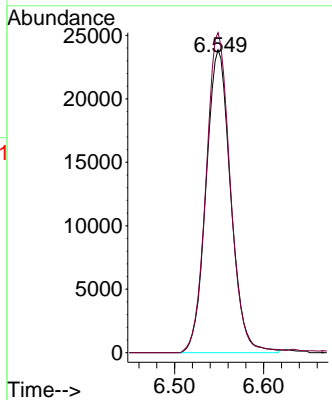
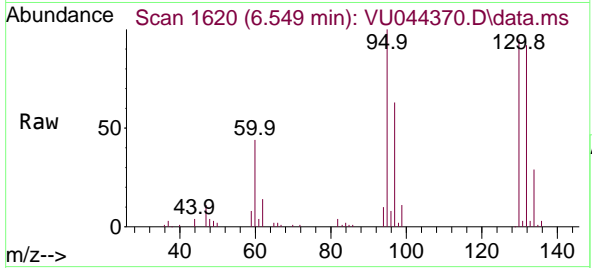




#37
 Trichloroethene
 Concen: 3.099 ug/l
 RT: 6.549 min Scan# 1620
 Delta R.T. -0.000 min
 Lab File: VU044370.D
 Acq: 20 Jul 2021 12:53

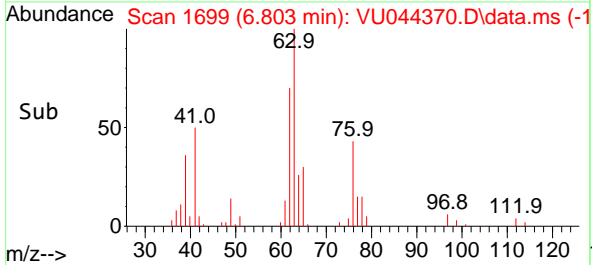
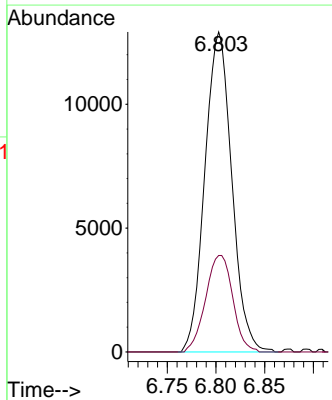
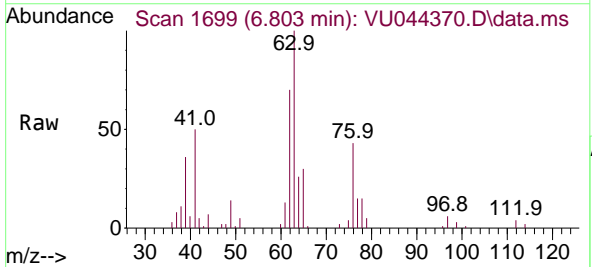
Instrument :
 MSVOA_U
 ClientSampled :

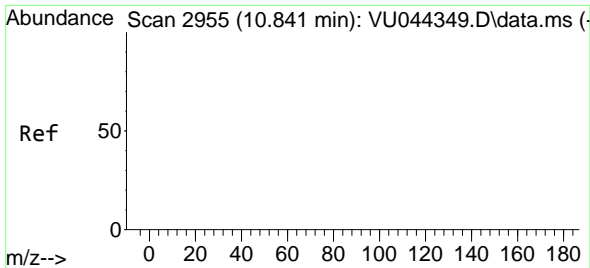
Tgt Ion:130 Resp: 45743
 Ion Ratio Lower Upper
 130 100
 95 105.6 77.8 116.6



#38
 1,2-Dichloropropane
 Concen: 1.597 ug/l
 RT: 6.803 min Scan# 1699
 Delta R.T. -0.000 min
 Lab File: VU044370.D
 Acq: 20 Jul 2021 12:53

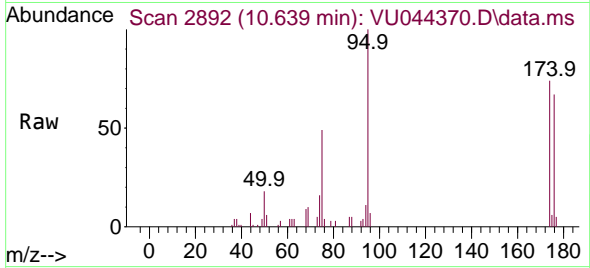
Tgt Ion: 63 Resp: 24820
 Ion Ratio Lower Upper
 63 100
 65 30.2 24.7 37.1





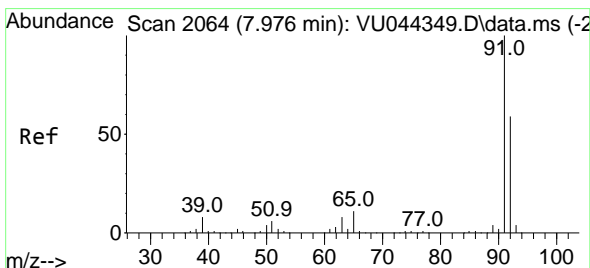
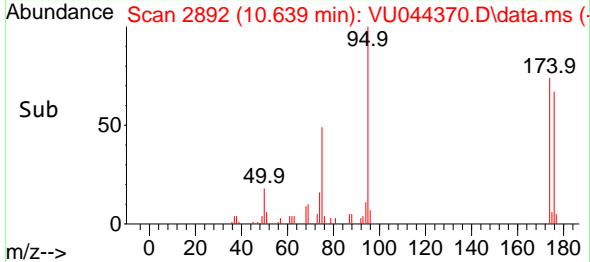
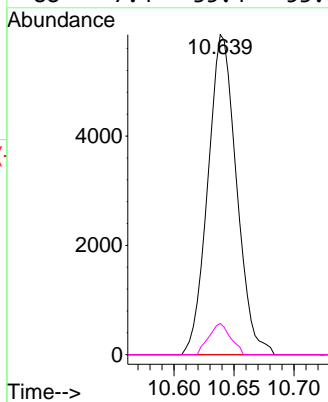
#46
 t-1,4-Dichloro-2-butene
 Concen: 2.190 ug/l
 RT: 10.639 min Scan# 2892
 Delta R.T. -0.203 min
 Lab File: VU044370.D
 Acq: 20 Jul 2021 12:53

Instrument :
 MSVOA_U
 ClientSampled :



Tgt Ion: 75 Resp: 9722

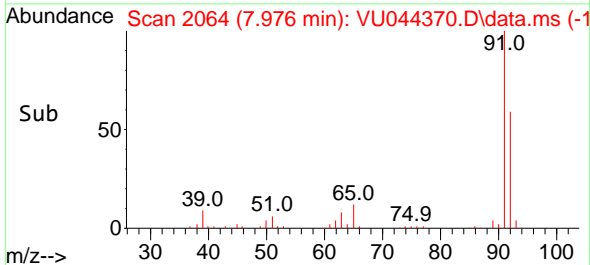
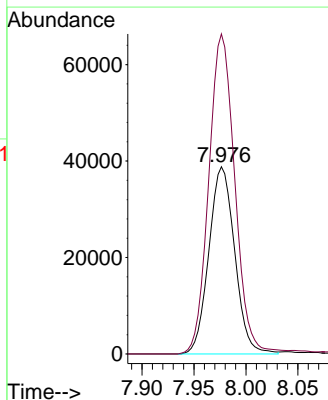
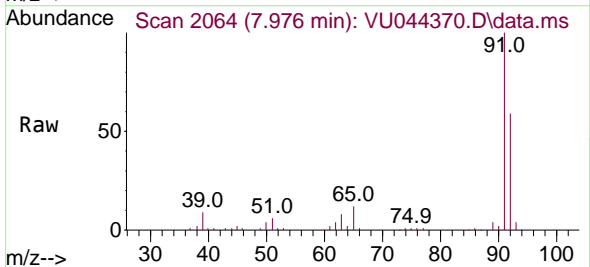
Ion	Ratio	Lower	Upper
75	100		
53	0.0	63.7	95.5#
89	0.0	44.6	67.0#
88	7.4	35.4	53.0#

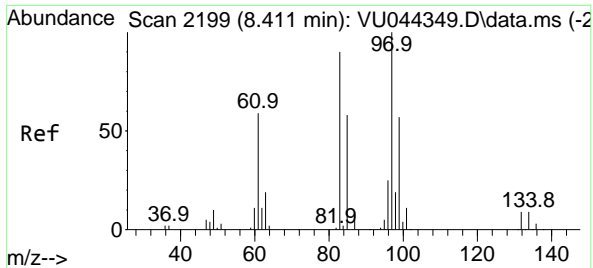


#49
 Toluene
 Concen: 1.819 ug/l
 RT: 7.976 min Scan# 2064
 Delta R.T. -0.000 min
 Lab File: VU044370.D
 Acq: 20 Jul 2021 12:53

Tgt Ion: 92 Resp: 67219

Ion	Ratio	Lower	Upper
92	100		
91	172.4	137.0	205.6

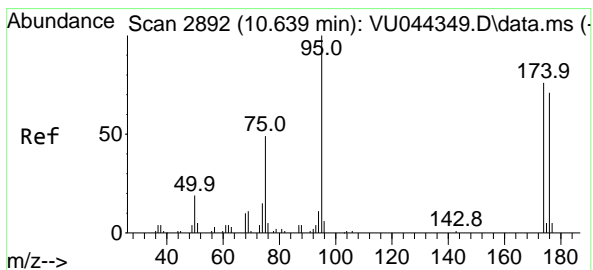
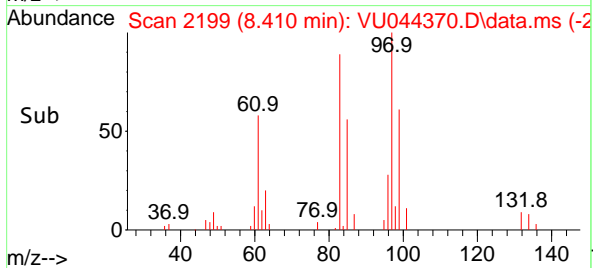
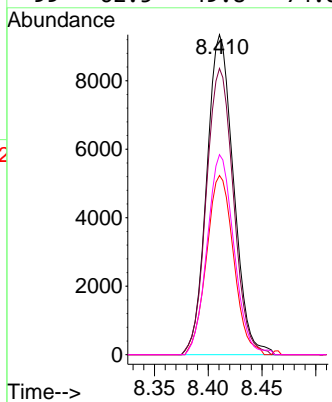
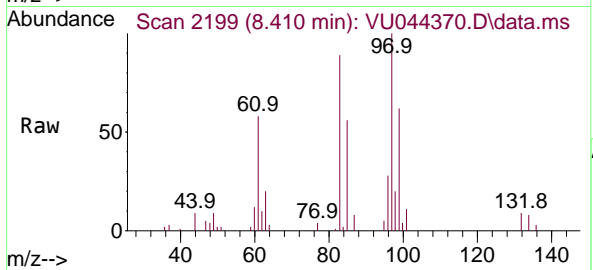




#52
 1,1,2-Trichloroethane
 Concen: 1.428 ug/l
 RT: 8.410 min Scan# 2199
 Delta R.T. -0.000 min
 Lab File: VU044370.D
 Acq: 20 Jul 2021 12:53

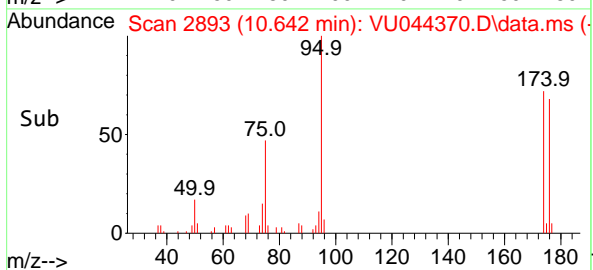
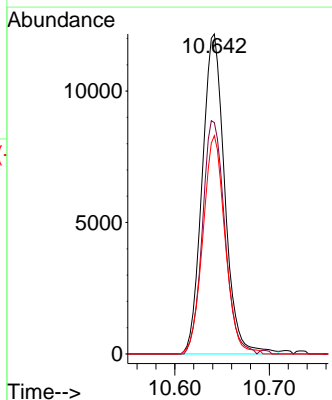
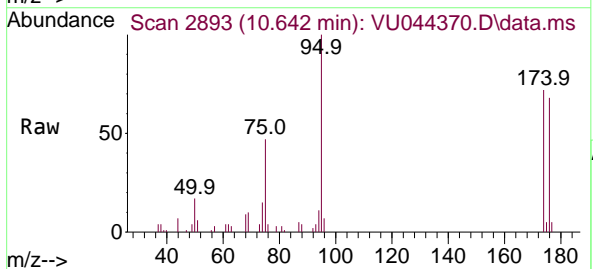
Instrument :
 MSVOA_U
 ClientSampled :

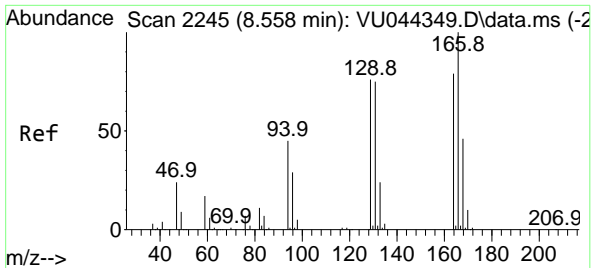
Tgt Ion	Resp	Lower	Upper
97	16224		
97	100		
83	89.4	68.2	102.2
85	56.0	44.0	66.0
99	62.5	49.8	74.8



#57
 4-Bromofluorobenzene
 Concen: 1.005 ug/l
 RT: 10.642 min Scan# 2893
 Delta R.T. 0.003 min
 Lab File: VU044370.D
 Acq: 20 Jul 2021 12:53

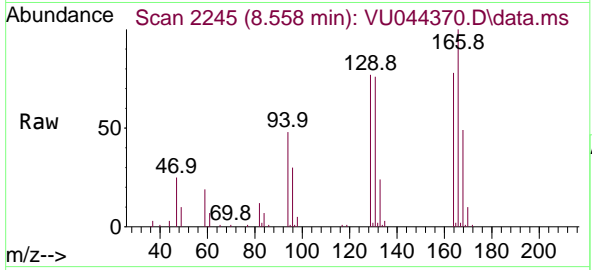
Tgt Ion	Resp	Lower	Upper
95	20143		
95	100		
174	72.2	62.2	93.2
176	67.1	60.3	90.5



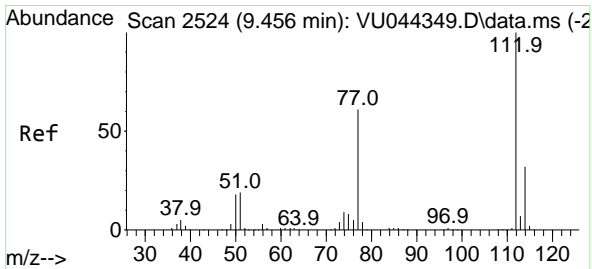
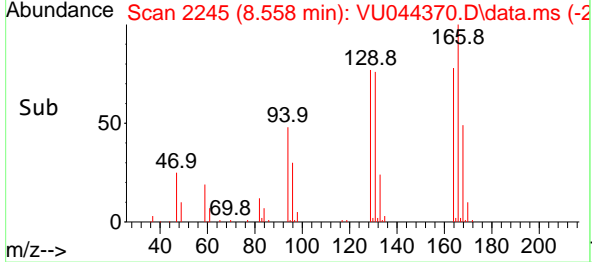
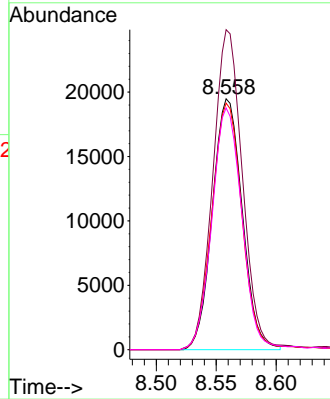


#58
 Tetrachloroethene
 Concen: 2.687 ug/l
 RT: 8.558 min Scan# 2245
 Delta R.T. -0.000 min
 Lab File: VU044370.D
 Acq: 20 Jul 2021 12:53

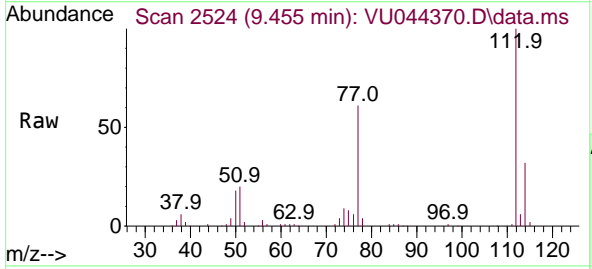
Instrument :
 MSVOA_U
 ClientSampled :



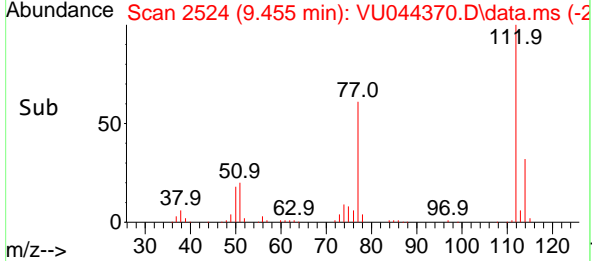
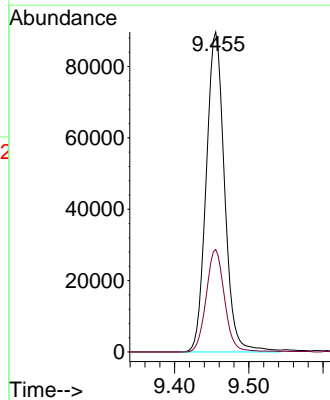
Tgt Ion:164 Resp: 33666
 Ion Ratio Lower Upper
 164 100
 166 127.6 100.2 150.4
 129 98.3 76.3 114.5
 131 96.3 73.8 110.8

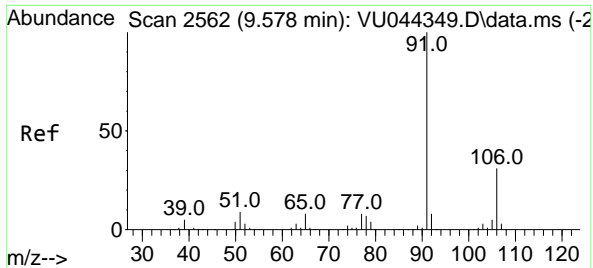


#59
 Chlorobenzene
 Concen: 3.936 ug/l
 RT: 9.455 min Scan# 2524
 Delta R.T. -0.000 min
 Lab File: VU044370.D
 Acq: 20 Jul 2021 12:53



Tgt Ion:112 Resp: 153755
 Ion Ratio Lower Upper
 112 100
 114 32.0 25.0 37.6

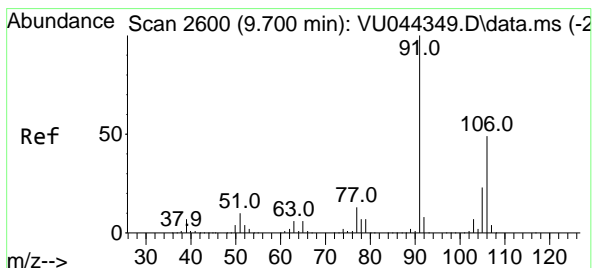
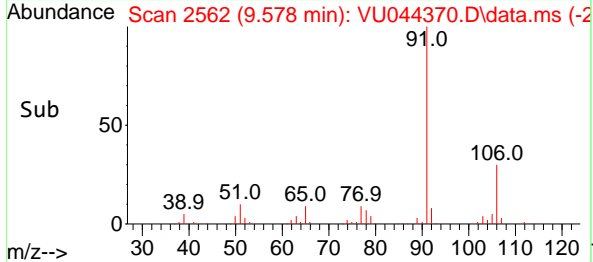
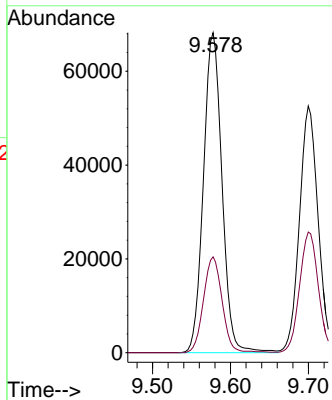
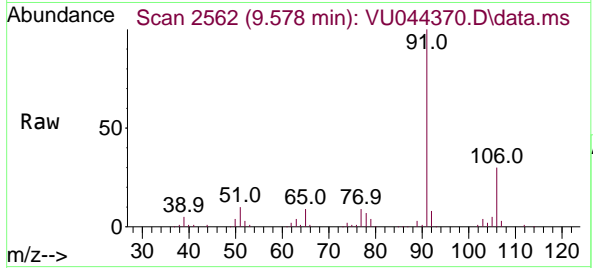




#63
 Ethyl Benzene
 Concen: 1.618 ug/l
 RT: 9.578 min Scan# 2562
 Delta R.T. -0.000 min
 Lab File: VU044370.D
 Acq: 20 Jul 2021 12:53

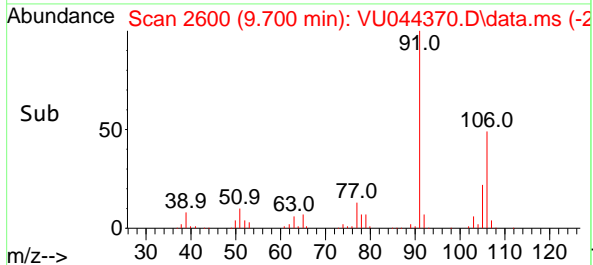
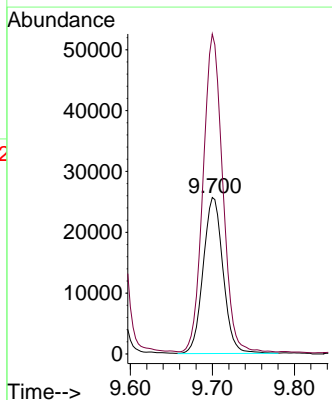
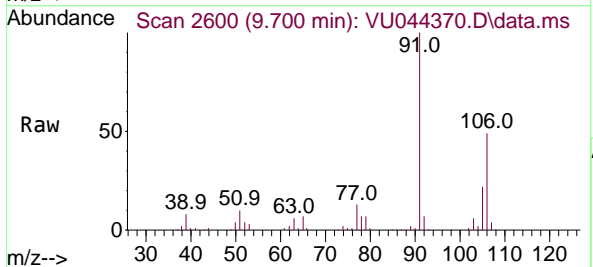
Instrument :
 MSVOA_U
 ClientSampled :

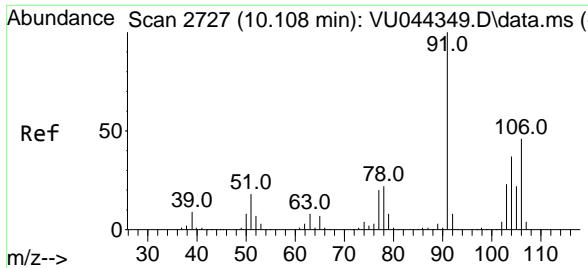
Tgt Ion: 91 Resp: 112931
 Ion Ratio Lower Upper
 91 100
 106 30.0 24.6 37.0



#64
 m/p-Xylenes
 Concen: 1.623 ug/l
 RT: 9.700 min Scan# 2600
 Delta R.T. -0.000 min
 Lab File: VU044370.D
 Acq: 20 Jul 2021 12:53

Tgt Ion: 106 Resp: 43308
 Ion Ratio Lower Upper
 106 100
 91 201.1 162.5 243.7

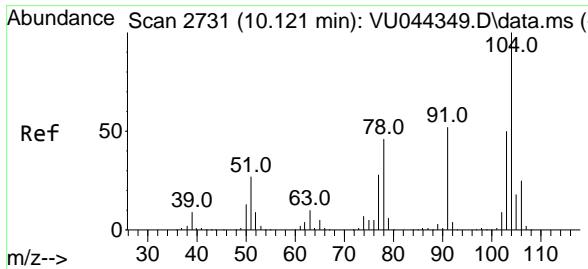
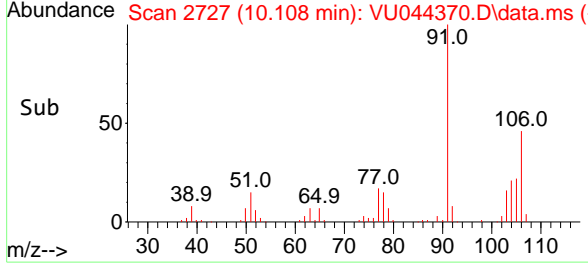
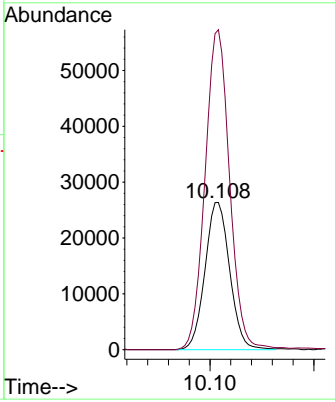
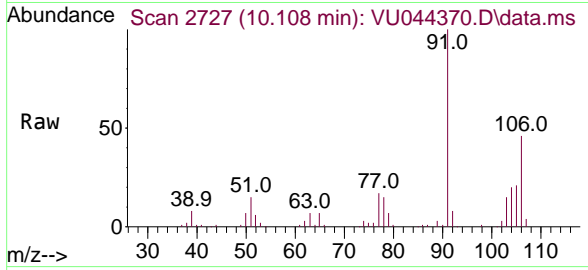




#65
 o-Xylene
 Concen: 1.691 ug/l
 RT: 10.108 min Scan# 2727
 Delta R.T. -0.000 min
 Lab File: VU044370.D
 Acq: 20 Jul 2021 12:53

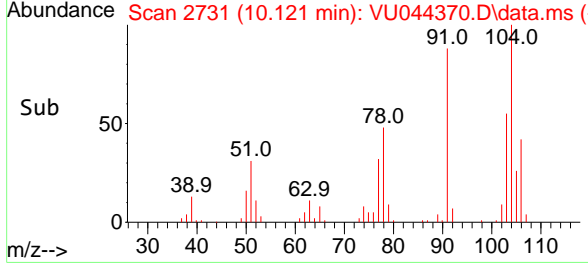
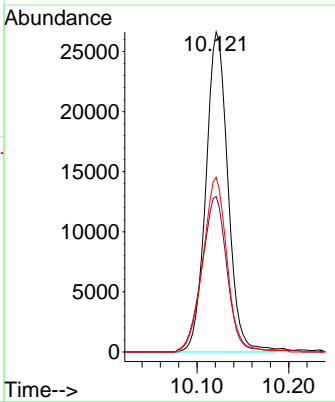
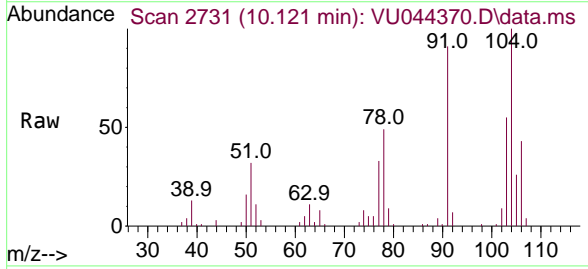
Instrument :
 MSVOA_U
 ClientSampled :

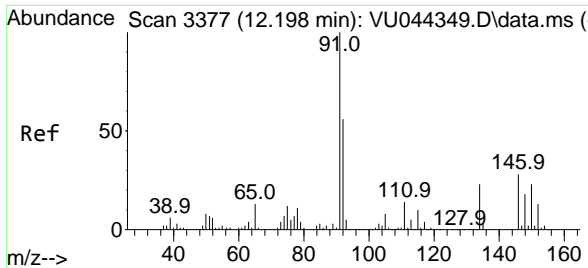
Tgt Ion:106 Resp: 43528
 Ion Ratio Lower Upper
 106 100
 91 216.8 108.2 324.6



#66
 Styrene
 Concen: 1.003 ug/l
 RT: 10.121 min Scan# 2731
 Delta R.T. -0.000 min
 Lab File: VU044370.D
 Acq: 20 Jul 2021 12:53

Tgt Ion:104 Resp: 44478
 Ion Ratio Lower Upper
 104 100
 78 55.4 41.6 62.4
 103 59.8 43.3 64.9

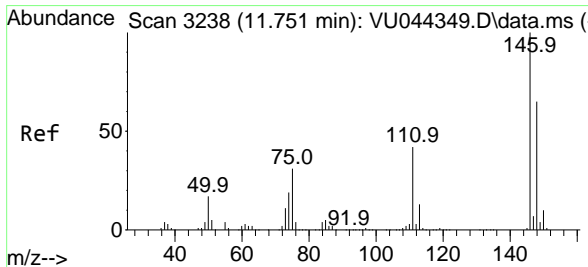
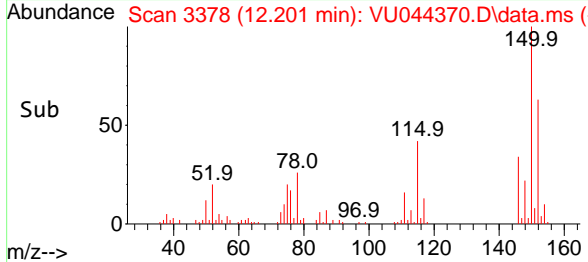
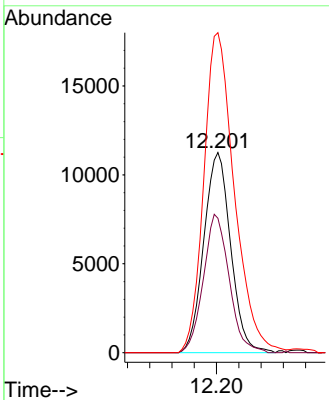
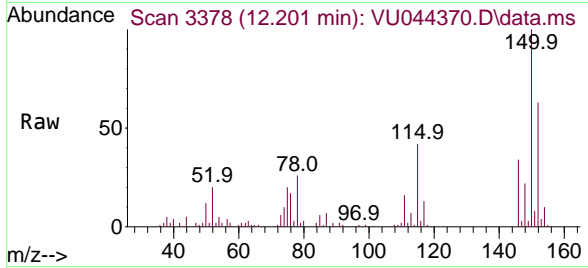




#68
 1,2-Dichlorobenzene-d4
 Concen: 0.964 ug/l
 RT: 12.201 min Scan# 3378
 Delta R.T. 0.003 min
 Lab File: VU044370.D
 Acq: 20 Jul 2021 12:53

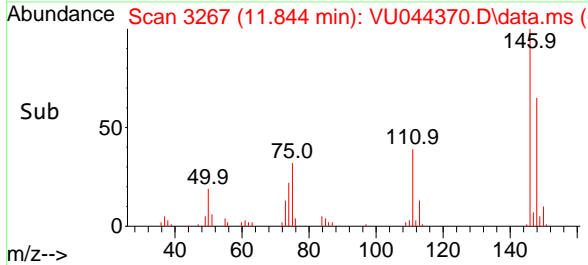
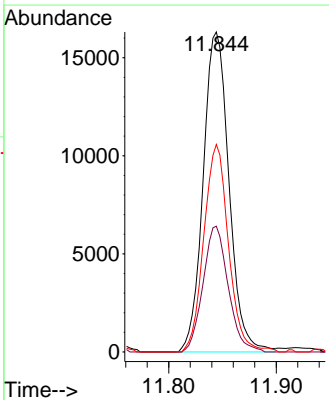
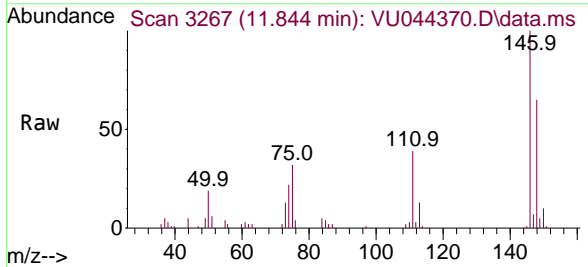
Instrument :
 MSVOA_U
 ClientSampled :

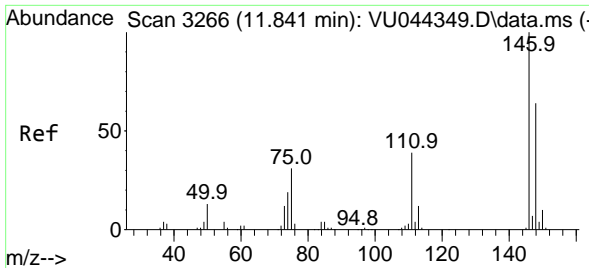
Tgt Ion	Resp	Lower	Upper
152	18847		
100	100		
115	66.5	0.0	257.0
150	181.8	0.0	630.2



#82
 1,3-Dichlorobenzene
 Concen: 0.860 ug/l
 RT: 11.844 min Scan# 3267
 Delta R.T. 0.093 min
 Lab File: VU044370.D
 Acq: 20 Jul 2021 12:53

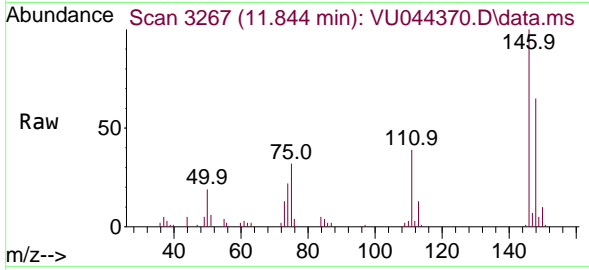
Tgt Ion	Resp	Lower	Upper
146	27227		
100	100		
111	38.3	33.3	49.9
148	62.1	50.9	76.3



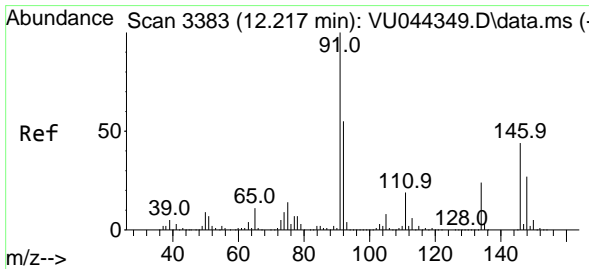
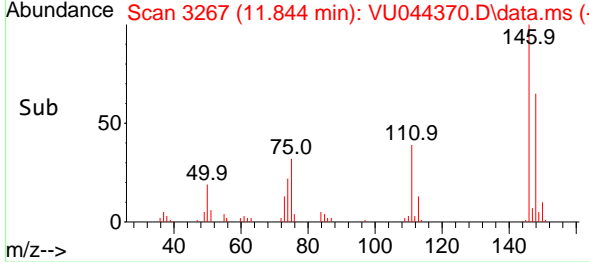
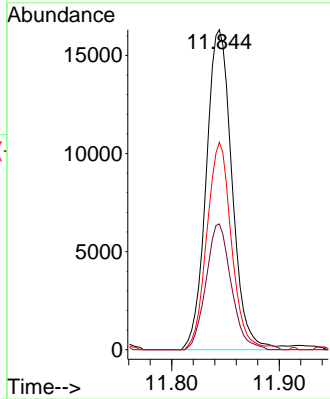


#83
 1,4-Dichlorobenzene
 Concen: 0.851 ug/l
 RT: 11.844 min Scan# 3267
 Delta R.T. 0.003 min
 Lab File: VU044370.D
 Acq: 20 Jul 2021 12:53

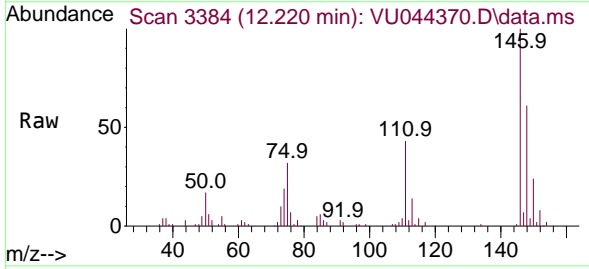
Instrument :
 MSVOA_U
 ClientSampled :



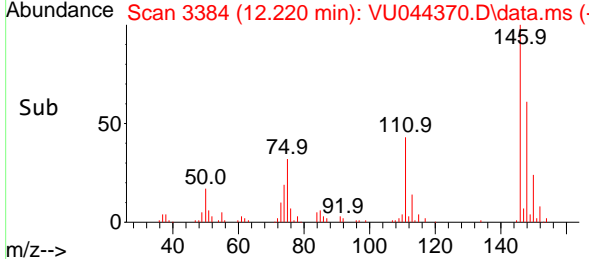
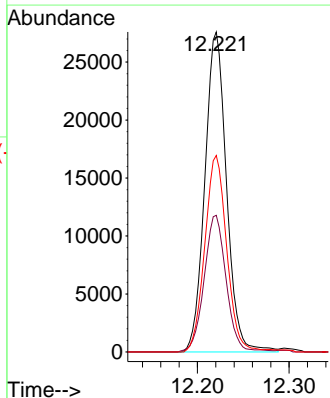
Tgt Ion:146 Resp: 27227
 Ion Ratio Lower Upper
 146 100
 111 38.3 32.6 48.8
 148 62.1 50.8 76.2

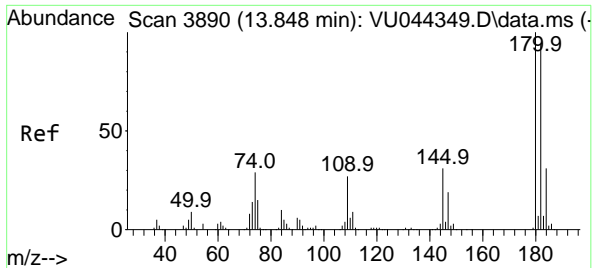


#85
 1,2-Dichlorobenzene
 Concen: 1.479 ug/l
 RT: 12.220 min Scan# 3384
 Delta R.T. 0.003 min
 Lab File: VU044370.D
 Acq: 20 Jul 2021 12:53



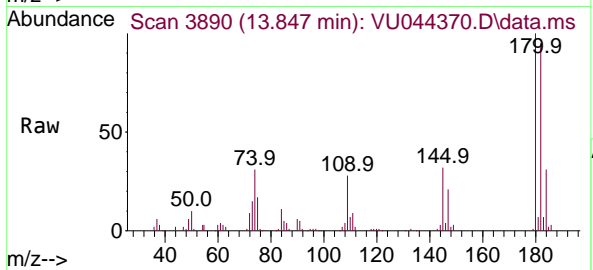
Tgt Ion:146 Resp: 45389
 Ion Ratio Lower Upper
 146 100
 111 43.3 21.6 64.6
 148 62.0 31.9 95.7





#87
 1,2,4-Trichlorobenzene
 Concen: 3.682 ug/l
 RT: 13.847 min Scan# 3890
 Delta R.T. -0.000 min
 Lab File: VU044370.D
 Acq: 20 Jul 2021 12:53

Instrument :
 MSVOA_U
 ClientSampled :



Tgt Ion:180 Resp: 79919

Ion	Ratio	Lower	Upper
180	100		
182	94.2	77.0	115.6
145	31.1	25.8	38.6

