

Data Path : Z:\voasrv\HPCHEM1\MSVOA_U\Data\VU072220\
 Data File : VU039624.D
 Acq On : 22 Jul 2020 12:27
 Operator : SY/MD
 Sample : L3346-04
 Misc : 25.0mL/MSVOA_U/WATER
 ALS Vial : 1 Sample Multiplier: 1

Instrument :
 MSVOA_U
 ClientSampled :
 F4C22

Integration Parameters: rteint.p
 Integrator: RTE
 Smoothing : ON Filtering: 5
 Sampling : 1 Min Area: 3 % of largest Peak
 Start Thrs: 0.1 Max Peaks: 100
 Stop Thrs : 0 Peak Location: TOP

If leading or trailing edge < 100 prefer < Baseline drop else tangent >
 Peak separation: 5

Method : Z:\VOASRV\HPCHEM1\MSVOA_U\METHOD\SOMUTR072120WMA.M
 Title : TRACE VOA SOM01.0

Signal : TIC

| peak # | R.T. min | first scan | max scan | last scan | PK TY | peak height | corr. area | corr. % max. | % of total |
|--------|----------|------------|----------|-----------|-------|-------------|------------|--------------|------------|
| 1 | 1.488 | 40 | 46 | 54 | rVB | 4753 | 4922 | 1.09% | 0.147% |
| 2 | 1.607 | 74 | 83 | 92 | rBV | 45337 | 51127 | 11.31% | 1.525% |
| 3 | 1.925 | 170 | 182 | 192 | rBV | 40967 | 56419 | 12.48% | 1.682% |
| 4 | 2.581 | 374 | 386 | 401 | rBV2 | 79567 | 131317 | 29.04% | 3.916% |
| 5 | 2.665 | 401 | 412 | 423 | rBV3 | 3565 | 9278 | 2.05% | 0.277% |
| 6 | 4.661 | 1016 | 1033 | 1071 | rBV | 56633 | 194217 | 42.95% | 5.792% |
| 7 | 5.086 | 1148 | 1165 | 1182 | rBV2 | 74818 | 165322 | 36.56% | 4.930% |
| 8 | 5.745 | 1349 | 1370 | 1394 | rBV2 | 147473 | 386774 | 85.53% | 11.534% |
| 9 | 6.266 | 1517 | 1532 | 1554 | rBV | 128359 | 246817 | 54.58% | 7.360% |
| 10 | 6.706 | 1654 | 1669 | 1688 | rBV | 94500 | 181436 | 40.12% | 5.410% |
| 11 | 7.578 | 1927 | 1940 | 1954 | rBV2 | 47471 | 83461 | 18.46% | 2.489% |
| 12 | 7.906 | 2029 | 2042 | 2057 | rBV | 175135 | 306160 | 67.71% | 9.130% |
| 13 | 7.976 | 2059 | 2064 | 2075 | rVB2 | 3706 | 5797 | 1.28% | 0.173% |
| 14 | 8.189 | 2119 | 2130 | 2142 | rBV3 | 29189 | 50404 | 11.15% | 1.503% |
| 15 | 8.642 | 2258 | 2271 | 2304 | rBV | 235076 | 452196 | 100.00% | 13.485% |
| 16 | 9.420 | 2500 | 2513 | 2540 | rBV | 183387 | 312056 | 69.01% | 9.306% |
| 17 | 10.758 | 2918 | 2929 | 2941 | rVB | 75993 | 119699 | 26.47% | 3.569% |
| 18 | 11.809 | 3244 | 3256 | 3271 | rBV2 | 183389 | 298126 | 65.93% | 8.890% |
| 19 | 12.188 | 3362 | 3374 | 3391 | rVB | 183762 | 297885 | 65.88% | 8.883% |

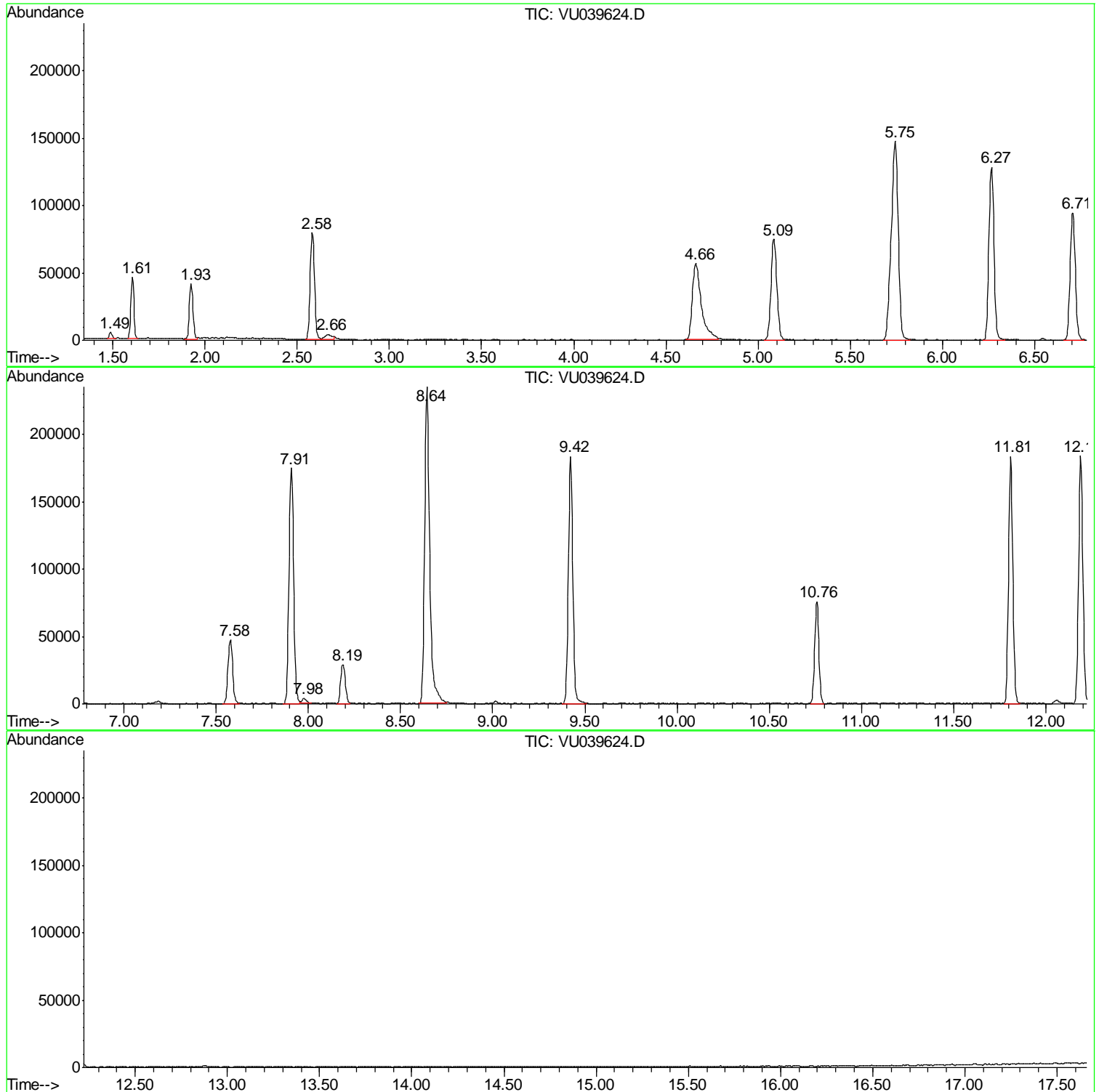
Sum of corrected areas: 3353413

Data Path : Z:\voasrv\HPCHEM1\MSVOA_U\Data\VU072220\
Data File : VU039624.D
Acq On : 22 Jul 2020 12:27
Operator : SY/MD
Sample : L3346-04
Misc : 25.0mL/MSVOA_U/WATER
ALS Vial : 1 Sample Multiplier: 1

Instrument :
MSVOA_U
ClientSampled :
F4C22

Quant Method : Z:\VOASRV\HPCHEM1\MSVOA_U\METHOD\SOMUTR072120WMA.M
Quant Title : TRACE VOA SOM01.0

TIC Library : C:\DATABASE\NIST11.L
TIC Integration Parameters: LSCINT.P



Data Path : Z:\voasrv\HPCHEM1\MSVOA_U\Data\VU072220\
Data File : VU039624.D
Acq On : 22 Jul 2020 12:27
Operator : SY/MD
Sample : L3346-04
Misc : 25.0mL/MSVOA_U/WATER
ALS Vial : 1 Sample Multiplier: 1

Instrument :
MSVOA_U
ClientSampleId :
F4C22

Quant Method : Z:\VOASRV\HPCHEM1\MSVOA_U\METHOD\SOMUTR072120WMA.M
Quant Title : TRACE VOA SOM01.0

TIC Library : C:\DATABASE\NIST11.L
TIC Integration Parameters: LSCINT.P

No Library Search Compounds Detected

Data Path : Z:\voasrv\HPCHEM1\MSVOA_U\Data\VU072220\
Data File : VU039624.D
Acq On : 22 Jul 2020 12:27
Operator : SY/MD
Sample : L3346-04
Misc : 25.0mL/MSVOA_U/WATER
ALS Vial : 1 Sample Multiplier: 1

Instrument :
MSVOA_U
ClientSampleId :
F4C22

Quant Method : Z:\VOASRV\HPCHEM1\MSVOA_U\METHOD\SOMUTR072120WMA.M
Quant Title : TRACE VOA SOM01.0

TIC Library : C:\DATABASE\NIST11.L
TIC Integration Parameters: LSCINT.P

| TIC Top Hit name | RT | EstConc | Units | Response | --Internal Standard-- | | | |
|------------------|----|---------|-------|----------|-----------------------|----|------|------|
| | | | | | # | RT | Resp | Conc |
