

Data Path : Z:\voasrv\HPCHEM1\MSVOA_U\Data\VU072221\
 Data File : VU044387.D
 Acq On : 22 Jul 2021 12:08
 Operator : SY/MD
 Sample : VU0722WBSD01
 Misc : 25.0mL/MSVOA_U/WATER
 ALS Vial : 6 Sample Multiplier: 1

Instrument :
 MSVOA_U
 ClientSampled :

Quant Time: Jul 23 03:29:37 2021
 Quant Method : Z:\voasrv\HPCHEM1\MSVOA_U\Method\524U071621DW.M
 Quant Title : METHOD 524.2 VOLATILES DRINKING WATER
 QLast Update : Fri Jul 16 14:36:39 2021
 Response via : Initial Calibration

| Compound | R.T. | QIon | Response | Conc | Units | Dev(Min) |
|------------------------------------|--------|------|----------|--------|---------|----------|
| Internal Standards | | | | | | |
| 1) Fluorobenzene | 6.122 | 96 | 46668 | 1.000 | ug/l | # 0.00 |
| System Monitoring Compounds | | | | | | |
| 57) 4-Bromofluorobenzene | 10.639 | 95 | 18110 | 0.962 | ug/l | 0.00 |
| Spiked Amount | 1.000 | | Recovery | = | 96.000% | |
| 68) 1,2-Dichlorobenzene-d4 | 12.199 | 152 | 18164 | 0.989 | ug/l | 0.00 |
| Spiked Amount | 1.000 | | Recovery | = | 99.000% | |
| Target Compounds | | | | | | |
| | | | | | | Qvalue |
| 2) Dichlorodifluoromethane | 1.389 | 85 | 31282 | 1.921 | ug/l | 99 |
| 3) Chloromethane | 1.524 | 50 | 34786 | 1.964 | ug/l | 100 |
| 4) Vinyl Chloride | 1.607 | 62 | 36453 | 2.038 | ug/l | 98 |
| 5) Bromomethane | 1.861 | 94 | 20415 | 2.141 | ug/l | 100 |
| 6) Chloroethane | 1.938 | 64 | 23175 | 2.130 | ug/l | 99 |
| 7) Trichlorofluoromethane | 2.144 | 101 | 41737 | 2.159 | ug/l | 98 |
| 8) 1,1,2-Trichloro-1,2,2-... | 2.588 | 101 | 26057 | 2.133 | ug/l | 96 |
| 9) 1,1-Dichloroethene | 2.585 | 96 | 24511 | 2.057 | ug/l | 95 |
| 10) Iodomethane | 2.729 | 142 | 31000 | 1.988 | ug/l | 91 |
| 11) Allyl Chloride | 2.932 | 41 | 41023 | 2.090 | ug/l | 83 |
| 12) Acrylonitrile | 3.331 | 53 | 12298 | 4.503 | ug/l | 86 |
| 13) Acetone | 2.639 | 43 | 13740 | 10.087 | ug/l | 92 |
| 14) Carbon Disulfide | 2.800 | 76 | 79274 | 2.009 | ug/l | 99 |
| 15) Methylene Chloride | 3.051 | 84 | 35384 | 2.092 | ug/l | 95 |
| 16) trans-1,2-Dichloroethene | 3.360 | 96 | 27364 | 2.058 | ug/l | 98 |
| 17) 1,1-Dichloroethane | 3.881 | 63 | 53190 | 2.149 | ug/l | 99 |
| 18) 2-Butanone | 4.733 | 43 | 29086 | 9.957 | ug/l | 96 |
| 19) Cyclohexane | 5.389 | 56 | 47137 | 2.083 | ug/l | 98 |
| 20) Methylcyclohexane | 6.768 | 83 | 45426 | 1.925 | ug/l | 99 |
| 21) 2,2-Dichloropropane | 4.672 | 77 | 42686 | 2.103 | ug/l | 98 |
| 22) cis-1,2-Dichloroethene | 4.678 | 96 | 30432 | 2.095 | ug/l | 96 |
| 23) Diethyl Ether | 2.385 | 59 | 22133 | 2.213 | ug/l | 100 |
| 24) tert-Butyl Alcohol | 3.209 | 59 | 11263 | 18.981 | ug/l | 97 |
| 25) Methyl tert-Butyl Ether | 3.379 | 73 | 70555 | 2.121 | ug/l | 92 |
| 26) Bromochloromethane | 4.983 | 128 | 12906 | 2.099 | ug/l | 97 |
| 27) Chloroform | 5.099 | 83 | 52900 | 2.208 | ug/l | 99 |
| 28) 1,1,1-Trichloroethane | 5.321 | 97 | 42727 | 2.138 | ug/l | 99 |
| 29) 1,1-Dichloropropene | 5.530 | 75 | 38472 | 2.026 | ug/l | 98 |
| 30) Carbon Tetrachloride | 5.527 | 117 | 33128 | 1.988 | ug/l | 99 |
| 31) Isopropyl Ether | 4.012 | 45 | 88703 | 2.154 | ug/l | 96 |
| 32) Ethyl-t-butyl ether | 4.524 | 59 | 83802 | 2.063 | ug/l | 98 |
| 33) Tert-Amyl methyl ether | 5.961 | 73 | 73688 | 2.040 | ug/l | 99 |
| 34) Propionitrile | 4.797 | 54 | 7467 | 9.031 | ug/l | # 93 |
| 35) Benzene | 5.781 | 78 | 112211 | 2.034 | ug/l | 100 |
| 36) 1,2-Dichloroethane | 5.806 | 62 | 34976 | 2.209 | ug/l | 97 |
| 37) Trichloroethene | 6.549 | 130 | 27382 | 1.974 | ug/l | 89 |
| 38) 1,2-Dichloropropane | 6.800 | 63 | 29358 | 2.010 | ug/l | 98 |
| 39) Methacrylonitrile | 4.990 | 41 | 10657 | 2.261 | ug/l | 96 |
| 40) Methyl acrylate | 4.864 | 55 | 15292 | 2.085 | ug/l | 98 |
| 41) Tetrahydrofuran | 5.083 | 42 | 8395 | 3.755 | ug/l | 90 |
| 42) 1-Chlorobutane | 5.462 | 56 | 53535 | 1.995 | ug/l | 94 |
| 43) Dibromomethane | 6.929 | 93 | 14729 | 2.033 | ug/l | 95 |
| 44) Bromodichloromethane | 7.115 | 83 | 34509 | 2.008 | ug/l | 97 |

Data Path : Z:\voasrv\HPCHEM1\MSVOA_U\Data\VU072221\
 Data File : VU044387.D
 Acq On : 22 Jul 2021 12:08
 Operator : SY/MD
 Sample : VU0722WBSD01
 Misc : 25.0mL/MSVOA_U/WATER
 ALS Vial : 6 Sample Multiplier: 1

Instrument :
 MSVOA_U
 ClientSampleId :

Quant Time: Jul 23 03:29:37 2021
 Quant Method : Z:\voasrv\HPCHEM1\MSVOA_U\Method\524U071621DW.M
 Quant Title : METHOD 524.2 VOLATILES DRINKING WATER
 QLast Update : Fri Jul 16 14:36:39 2021
 Response via : Initial Calibration

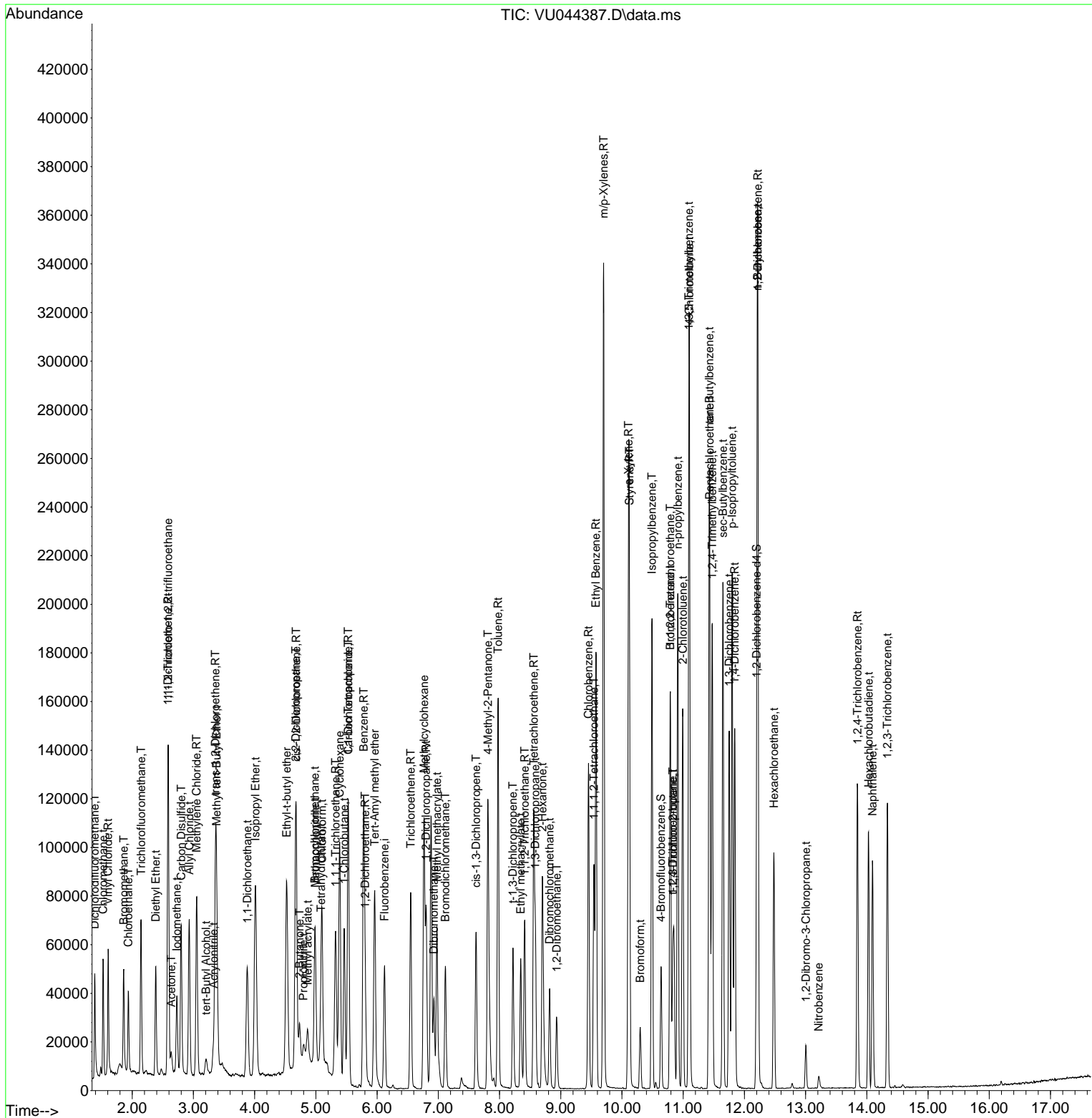
| Compound | R.T. | QIon | Response | Conc | Units | Dev(Min) |
|-------------------------------|--------|------|----------|--------|--------|----------|
| 45) 4-Methyl-2-Pentanone | 7.810 | 43 | 97813 | 9.940 | ug/l | 96 |
| 46) t-1,4-Dichloro-2-butene | 10.832 | 75 | 35981 | 8.629 | ug/l # | 50 |
| 47) Methyl methacrylate | 6.977 | 69 | 31784 | 3.969 | ug/l # | 90 |
| 48) Ethyl methacrylate | 8.347 | 69 | 30849 | 1.866 | ug/l | 97 |
| 49) Toluene | 7.977 | 92 | 67991 | 1.959 | ug/l | 98 |
| 50) t-1,3-Dichloropropene | 8.218 | 75 | 33088 | 1.854 | ug/l | 98 |
| 51) cis-1,3-Dichloropropene | 7.617 | 75 | 39199 | 1.862 | ug/l | 95 |
| 52) 1,1,2-Trichloroethane | 8.411 | 97 | 22234 | 2.083 | ug/l | 99 |
| 53) 1,3-Dichloropropane | 8.585 | 76 | 40535 | 2.068 | ug/l | 98 |
| 54) 2-Hexanone | 8.700 | 43 | 70107 | 10.015 | ug/l | 95 |
| 55) Dibromochloromethane | 8.819 | 129 | 21952 | 1.900 | ug/l | 99 |
| 56) 1,2-Dibromoethane | 8.932 | 107 | 21178 | 2.030 | ug/l | 100 |
| 58) Tetrachloroethene | 8.559 | 164 | 24279 | 2.062 | ug/l | 97 |
| 59) Chlorobenzene | 9.453 | 112 | 73138 | 1.993 | ug/l | 99 |
| 60) 1,1,1,2-Tetrachloroethane | 9.543 | 131 | 23911 | 1.955 | ug/l | 99 |
| 61) Pentachloroethane | 11.433 | 117 | 17550 | 1.796 | ug/l | 93 |
| 62) Hexachloroethane | 12.481 | 117 | 17878 | 1.753 | ug/l | 99 |
| 63) Ethyl Benzene | 9.575 | 91 | 127102 | 1.938 | ug/l | 98 |
| 64) m/p-Xylenes | 9.700 | 106 | 97952 | 3.908 | ug/l | 99 |
| 65) o-Xylene | 10.105 | 106 | 47978 | 1.984 | ug/l | 99 |
| 66) Styrene | 10.121 | 104 | 80689 | 1.936 | ug/l | 99 |
| 67) Bromoform | 10.298 | 173 | 11361 | 1.757 | ug/l | 99 |
| 69) Isopropylbenzene | 10.491 | 105 | 125735 | 1.943 | ug/l | 99 |
| 70) 1,1,2,2-Tetrachloroethane | 10.790 | 83 | 28772 | 2.043 | ug/l | 99 |
| 71) 1,2,3-Trichloropropane | 10.832 | 75 | 35981 | 2.980 | ug/l | 70 |
| 72) Bromobenzene | 10.787 | 156 | 29469 | 1.967 | ug/l | 94 |
| 73) n-propylbenzene | 10.912 | 120 | 34543 | 1.981 | ug/l | 94 |
| 74) 2-Chlorotoluene | 10.993 | 126 | 29366 | 1.963 | ug/l | 94 |
| 75) 1,3,5-Trimethylbenzene | 11.092 | 105 | 105905 | 1.937 | ug/l | 99 |
| 76) 4-Chlorotoluene | 11.102 | 126 | 30771 | 1.980 | ug/l | 98 |
| 77) tert-Butylbenzene | 11.427 | 119 | 103820 | 1.937 | ug/l | 100 |
| 78) 1,2,4-Trimethylbenzene | 11.475 | 105 | 109969 | 1.981 | ug/l | 99 |
| 79) sec-Butylbenzene | 11.649 | 105 | 145077 | 1.987 | ug/l | 98 |
| 80) Nitrobenzene | 13.215 | 77 | 3238 | 7.706 | ug/l | 95 |
| 81) p-Isopropyltoluene | 11.800 | 119 | 119292 | 1.974 | ug/l | 99 |
| 82) 1,3-Dichlorobenzene | 11.752 | 146 | 60434 | 2.031 | ug/l | 100 |
| 83) 1,4-Dichlorobenzene | 11.842 | 146 | 59224 | 1.971 | ug/l | 99 |
| 84) n-Butylbenzene | 12.215 | 91 | 115952 | 1.959 | ug/l | 99 |
| 85) 1,2-Dichlorobenzene | 12.218 | 146 | 58051 | 2.014 | ug/l | 98 |
| 86) 1,2-Dibromo-3-Chloropr... | 13.006 | 75 | 4932 | 2.026 | ug/l | 92 |
| 87) 1,2,4-Trichlorobenzene | 13.848 | 180 | 38806 | 1.903 | ug/l | 98 |
| 88) Hexachlorobutadiene | 14.028 | 225 | 19384 | 1.964 | ug/l | 98 |
| 89) Naphthalene | 14.092 | 128 | 77531 | 1.901 | ug/l | 98 |
| 90) 1,2,3-Trichlorobenzene | 14.337 | 180 | 36482 | 1.970 | ug/l | 97 |

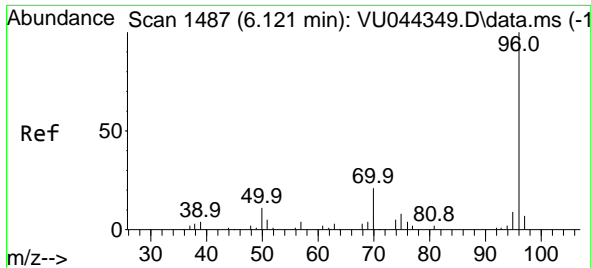
(#) = qualifier out of range (m) = manual integration (+) = signals summed

Data Path : Z:\voasrv\HPCHEM1\MSVOA_U\Data\VU072221\
 Data File : VU044387.D
 Acq On : 22 Jul 2021 12:08
 Operator : SY/MD
 Sample : VU07222WBSD01
 Misc : 25.0mL/MSVOA_U/WATER
 ALS Vial : 6 Sample Multiplier: 1

Instrument :
 MSVOA_U
 Client Sampled :

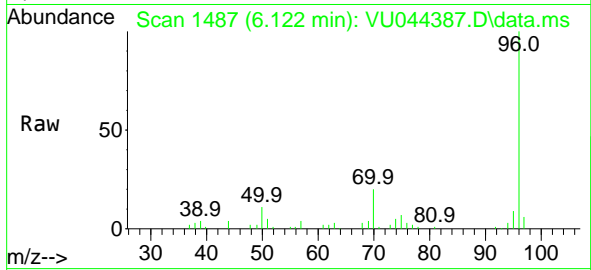
Quant Time: Jul 23 03:29:37 2021
 Quant Method : Z:\voasrv\HPCHEM1\MSVOA_U\Method\524U071621DW.M
 Quant Title : METHOD 524.2 VOLATILES DRINKING WATER
 QLast Update : Fri Jul 16 14:36:39 2021
 Response via : Initial Calibration





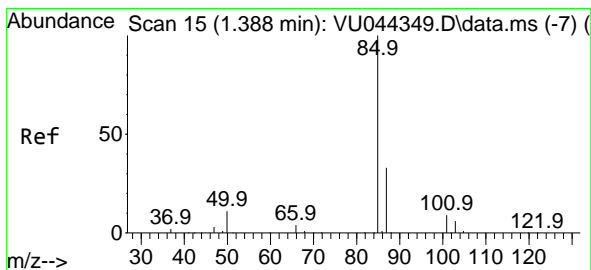
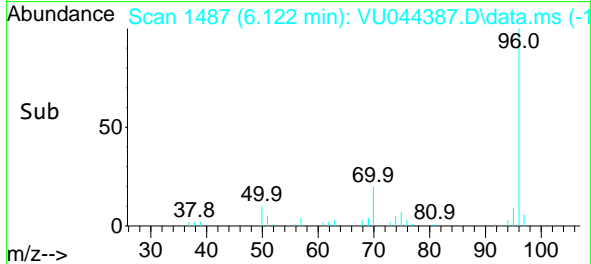
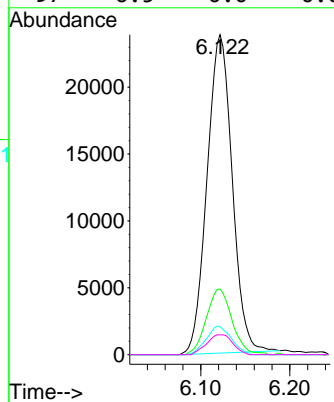
#1
 Fluorobenzene
 Concen: 1.000 ug/l
 RT: 6.122 min Scan# 1487
 Delta R.T. 0.001 min
 Lab File: VU044387.D
 Acq: 22 Jul 2021 12:08

Instrument :
 MSVOA_U
 ClientSampled :



Tgt Ion: 96 Resp: 46668

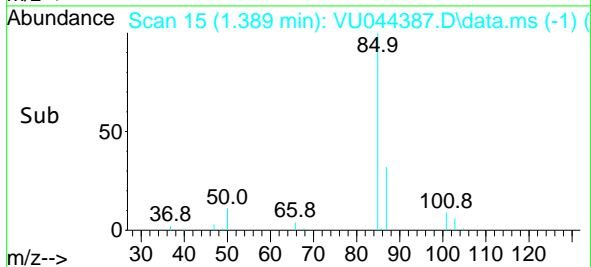
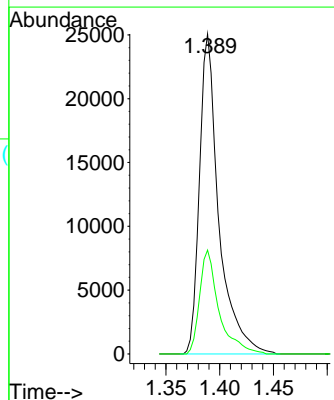
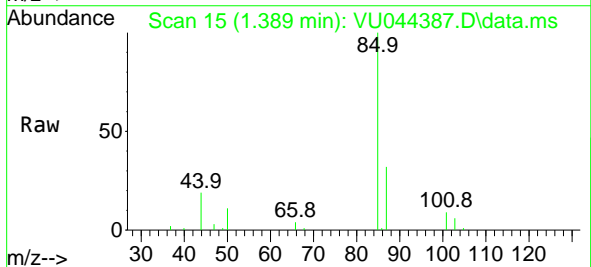
| Ion | Ratio | Lower | Upper |
|-----|-------|-------|-------|
| 96 | 100 | | |
| 70 | 21.1 | 16.2 | 24.2 |
| 95 | 9.0 | 7.3 | 10.9 |
| 97 | 6.5 | 0.0 | 0.0# |

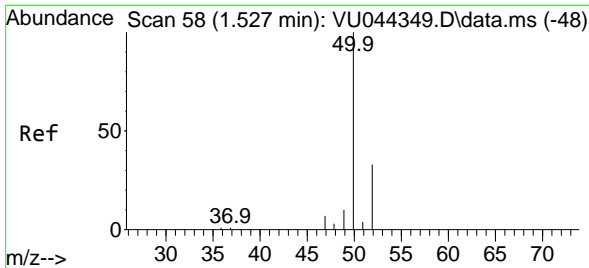


#2
 Dichlorodifluoromethane
 Concen: 1.921 ug/l
 RT: 1.389 min Scan# 15
 Delta R.T. 0.000 min
 Lab File: VU044387.D
 Acq: 22 Jul 2021 12:08

Tgt Ion: 85 Resp: 31282

| Ion | Ratio | Lower | Upper |
|-----|-------|-------|-------|
| 85 | 100 | | |
| 87 | 32.4 | 16.0 | 48.0 |

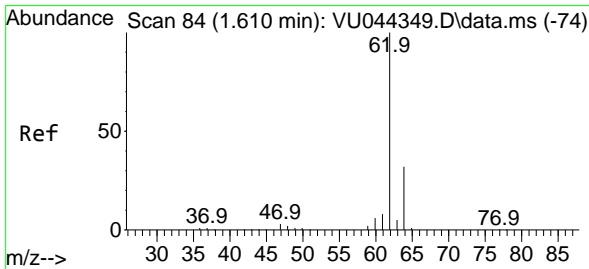
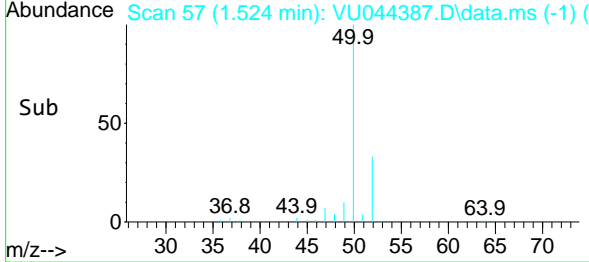
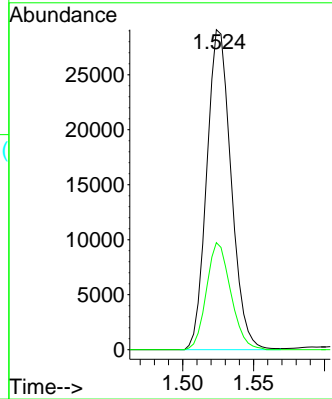
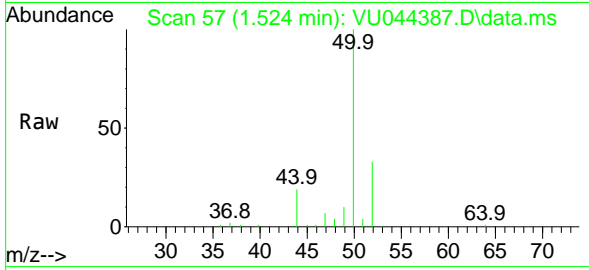




#3
 Chloromethane
 Concen: 1.964 ug/l
 RT: 1.524 min Scan# 57
 Delta R.T. -0.003 min
 Lab File: VU044387.D
 Acq: 22 Jul 2021 12:08

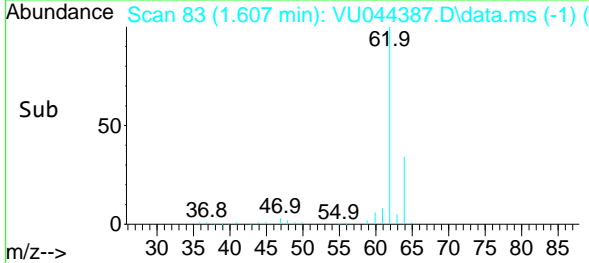
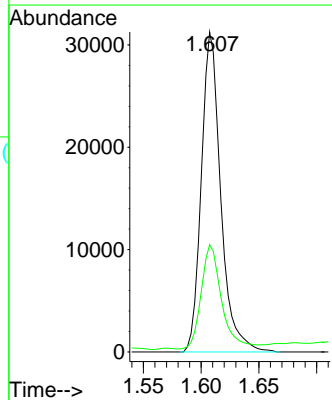
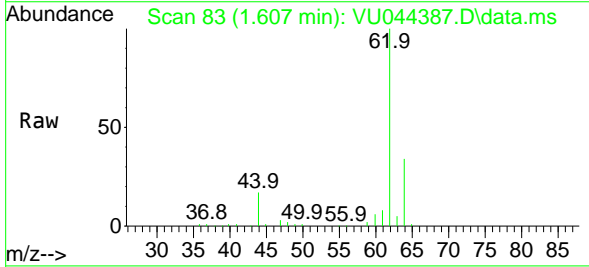
Instrument :
 MSVOA_U
 ClientSampled :

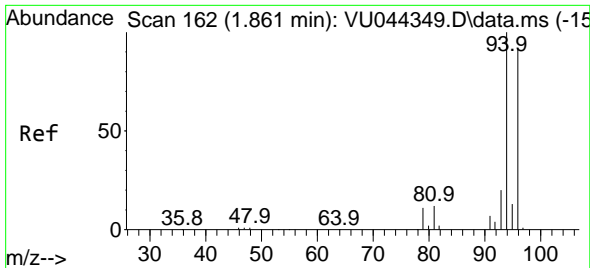
Tgt Ion: 50 Resp: 34786
 Ion Ratio Lower Upper
 50 100
 52 33.5 26.7 40.1



#4
 Vinyl Chloride
 Concen: 2.038 ug/l
 RT: 1.607 min Scan# 83
 Delta R.T. -0.003 min
 Lab File: VU044387.D
 Acq: 22 Jul 2021 12:08

Tgt Ion: 62 Resp: 36453
 Ion Ratio Lower Upper
 62 100
 64 32.6 25.1 37.7

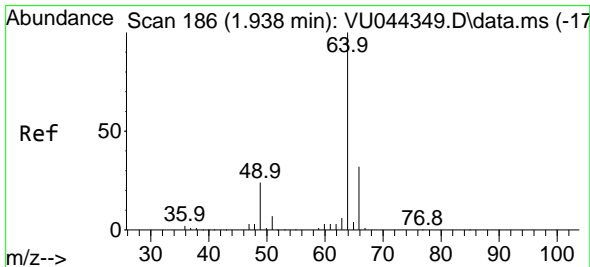
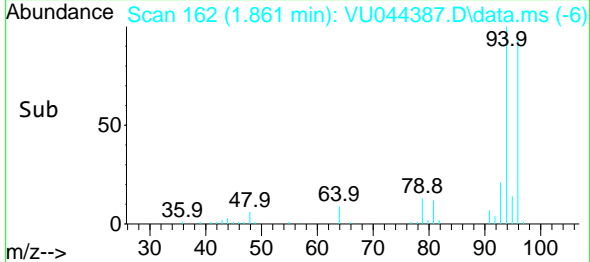
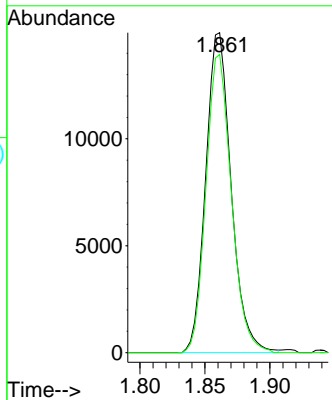
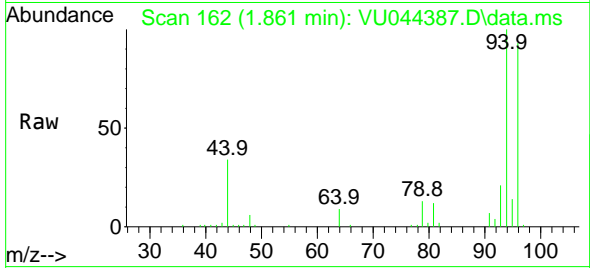




#5
 Bromomethane
 Concen: 2.141 ug/l
 RT: 1.861 min Scan# 162
 Delta R.T. 0.000 min
 Lab File: VU044387.D
 Acq: 22 Jul 2021 12:08

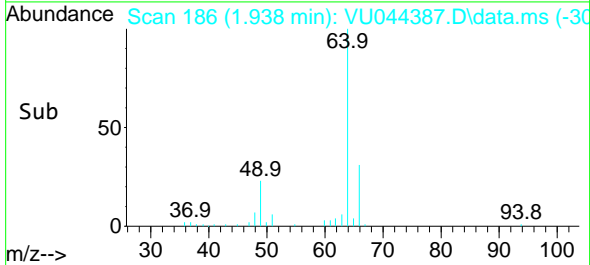
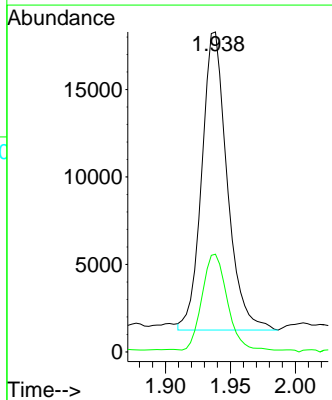
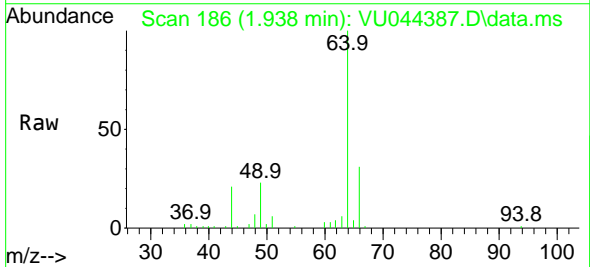
Instrument :
 MSVOA_U
 ClientSampled :

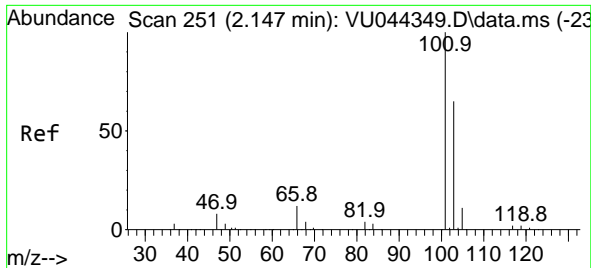
Tgt Ion: 94 Resp: 20415
 Ion Ratio Lower Upper
 94 100
 96 93.2 74.7 112.1



#6
 Chloroethane
 Concen: 2.130 ug/l
 RT: 1.938 min Scan# 186
 Delta R.T. 0.000 min
 Lab File: VU044387.D
 Acq: 22 Jul 2021 12:08

Tgt Ion: 64 Resp: 23175
 Ion Ratio Lower Upper
 64 100
 66 32.2 26.1 39.1

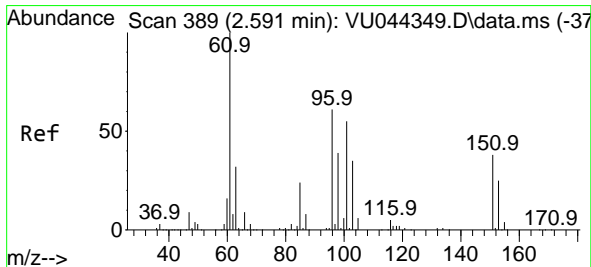
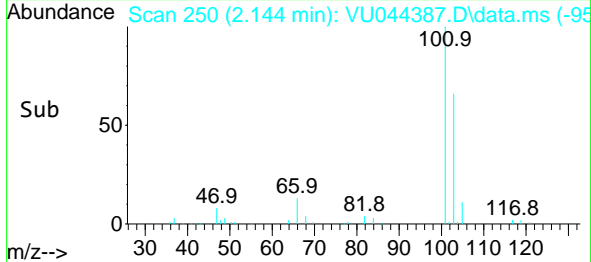
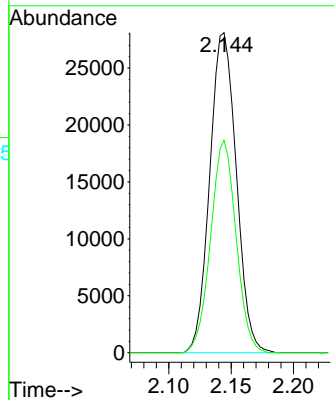
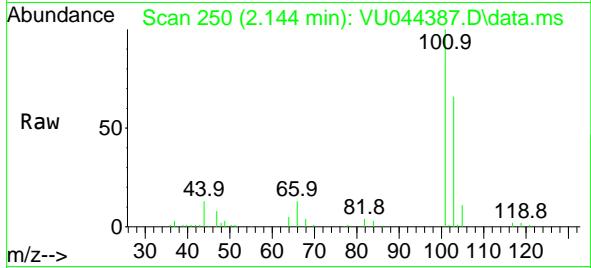




#7
 Trichlorofluoromethane
 Concen: 2.159 ug/l
 RT: 2.144 min Scan# 250
 Delta R.T. -0.003 min
 Lab File: VU044387.D
 Acq: 22 Jul 2021 12:08

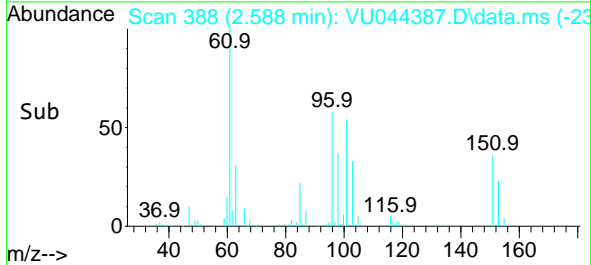
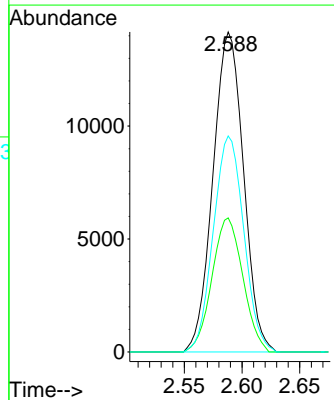
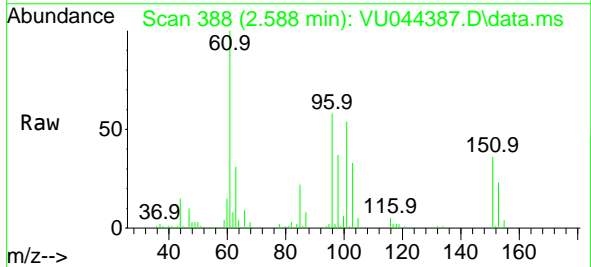
Instrument :
 MSVOA_U
 ClientSampled :

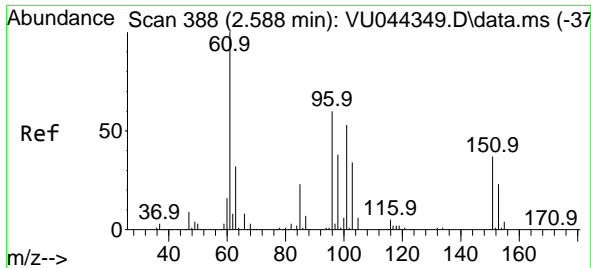
Tgt Ion:101 Resp: 41737
 Ion Ratio Lower Upper
 101 100
 103 66.3 51.9 77.9



#8
 1,1,2-Trichloro-1,2,2-trifluoroethane
 Concen: 2.133 ug/l
 RT: 2.588 min Scan# 388
 Delta R.T. -0.003 min
 Lab File: VU044387.D
 Acq: 22 Jul 2021 12:08

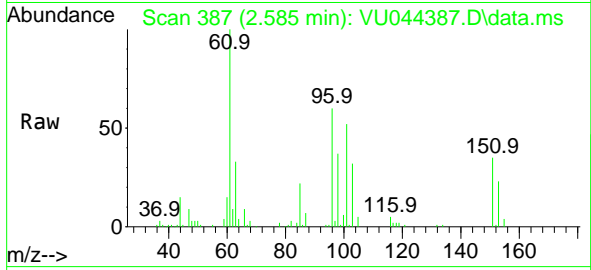
Tgt Ion:101 Resp: 26057
 Ion Ratio Lower Upper
 101 100
 85 42.4 35.8 53.8
 151 67.4 57.0 85.4



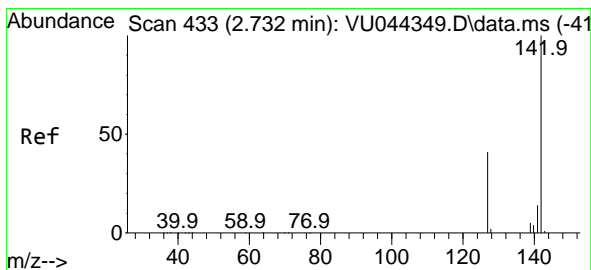
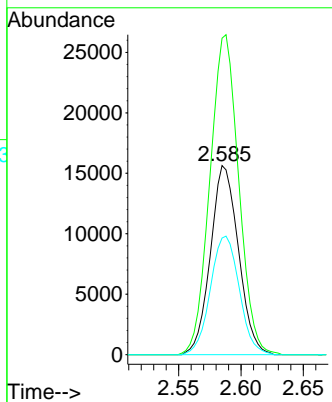
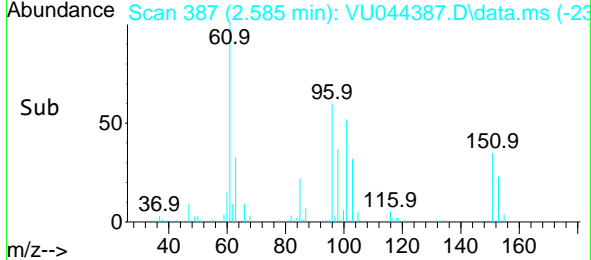


#9
 1,1-Dichloroethene
 Concen: 2.057 ug/l
 RT: 2.585 min Scan# 387
 Delta R.T. -0.003 min
 Lab File: VU044387.D
 Acq: 22 Jul 2021 12:08

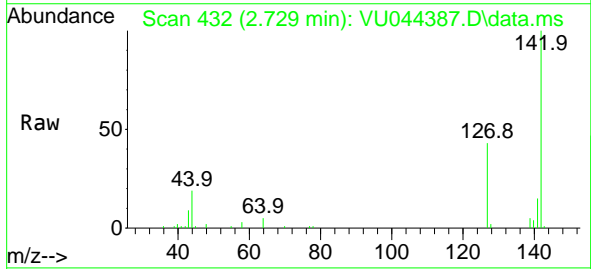
Instrument :
 MSVOA_U
 ClientSampled :



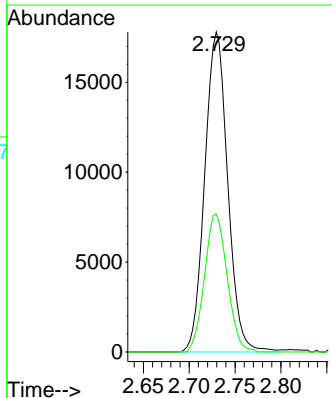
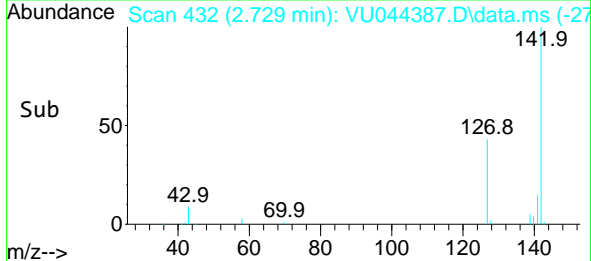
Tgt Ion: 96 Resp: 24511
 Ion Ratio Lower Upper
 96 100
 61 167.4 0.0 528.0
 98 61.7 0.0 127.4

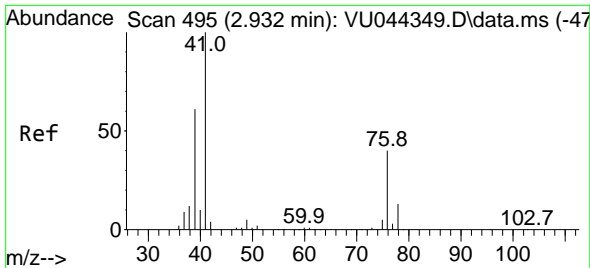


#10
 Iodomethane
 Concen: 1.988 ug/l
 RT: 2.729 min Scan# 432
 Delta R.T. -0.003 min
 Lab File: VU044387.D
 Acq: 22 Jul 2021 12:08



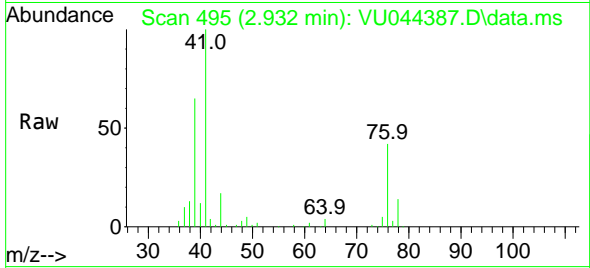
Tgt Ion:142 Resp: 31000
 Ion Ratio Lower Upper
 142 100
 127 42.5 39.1 58.7



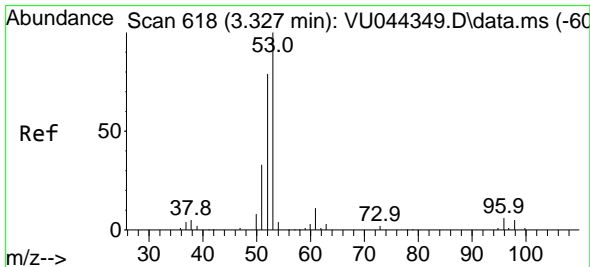
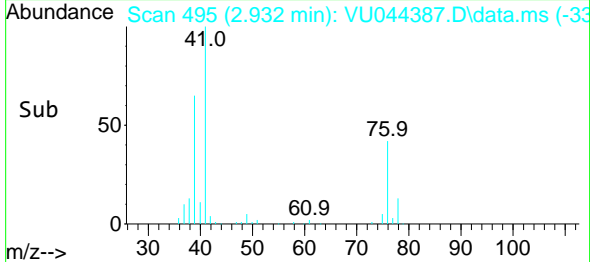
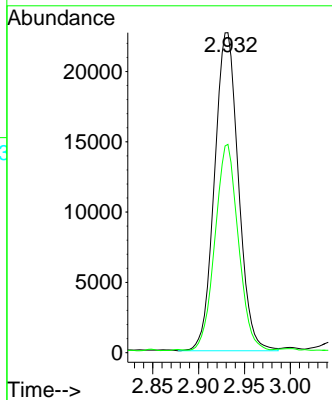


#11
 Allyl Chloride
 Concen: 2.090 ug/l
 RT: 2.932 min Scan# 495
 Delta R.T. 0.000 min
 Lab File: VU044387.D
 Acq: 22 Jul 2021 12:08

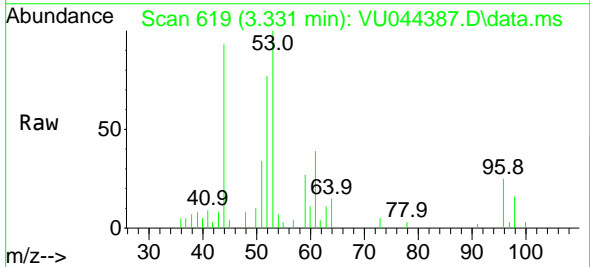
Instrument :
 MSVOA_U
 ClientSampled :



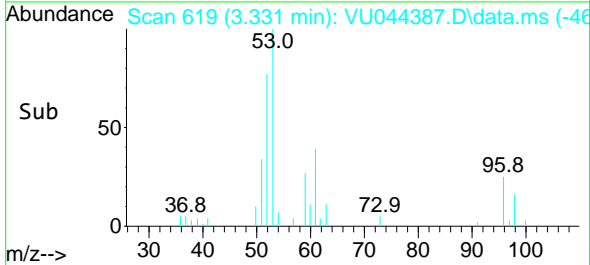
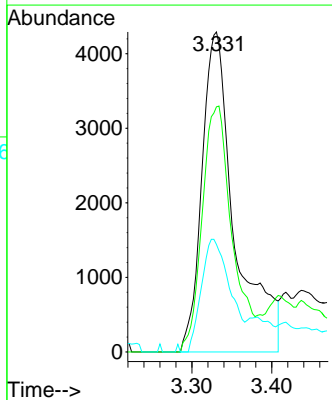
Tgt Ion: 41 Resp: 41023
 Ion Ratio Lower Upper
 41 100
 39 62.9 62.5 93.7

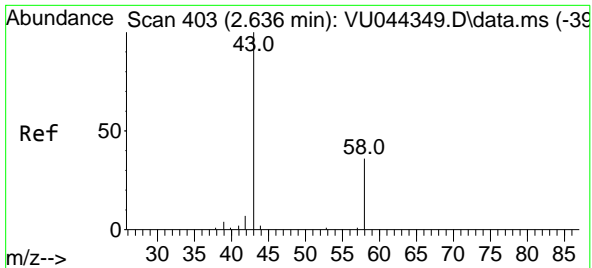


#12
 Acrylonitrile
 Concen: 4.503 ug/l
 RT: 3.331 min Scan# 619
 Delta R.T. 0.004 min
 Lab File: VU044387.D
 Acq: 22 Jul 2021 12:08



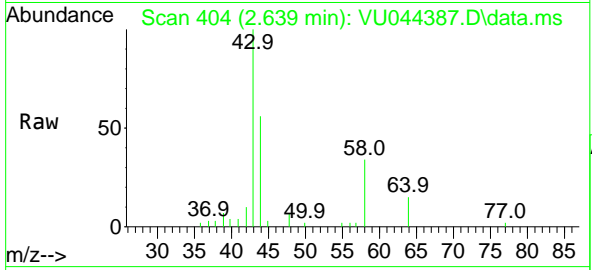
Tgt Ion: 53 Resp: 12298
 Ion Ratio Lower Upper
 53 100
 52 69.6 67.0 100.4
 51 30.9 29.8 44.6



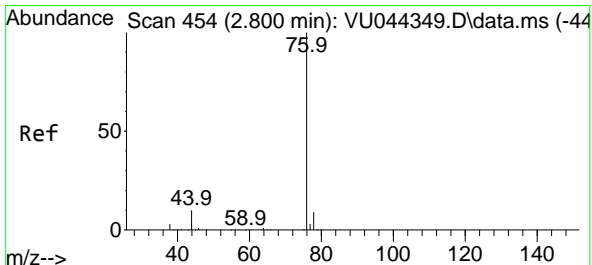
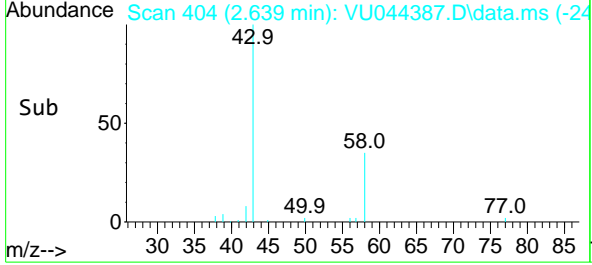
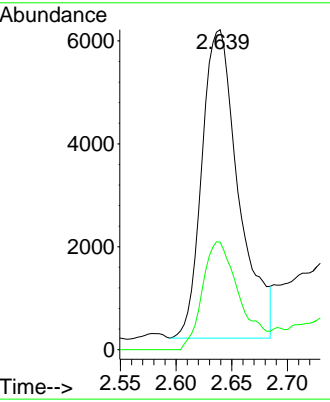


#13
 Acetone
 Concen: 10.087 ug/l
 RT: 2.639 min Scan# 404
 Delta R.T. 0.004 min
 Lab File: VU044387.D
 Acq: 22 Jul 2021 12:08

Instrument :
 MSVOA_U
 ClientSampled :

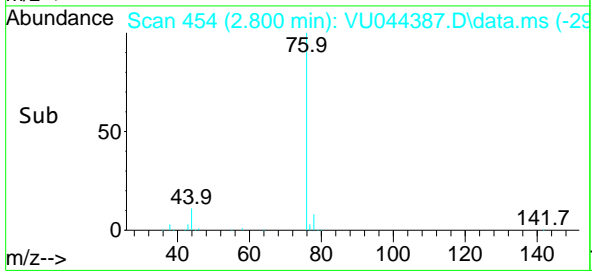
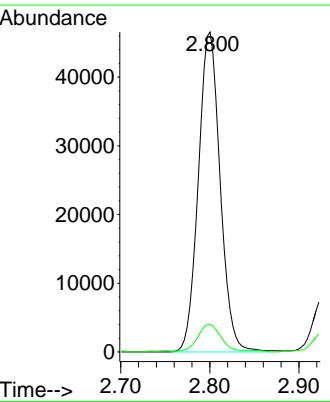
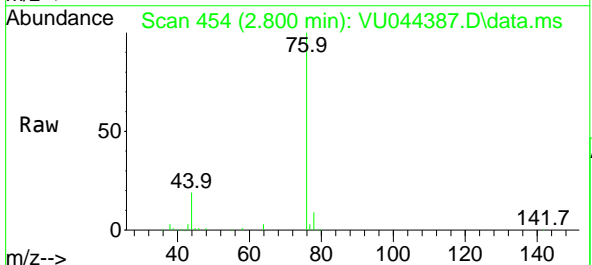


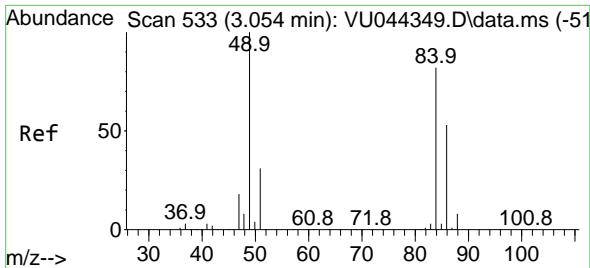
Tgt Ion: 43 Resp: 13740
 Ion Ratio Lower Upper
 43 100
 58 34.8 24.3 36.5



#14
 Carbon Disulfide
 Concen: 2.009 ug/l
 RT: 2.800 min Scan# 454
 Delta R.T. 0.000 min
 Lab File: VU044387.D
 Acq: 22 Jul 2021 12:08

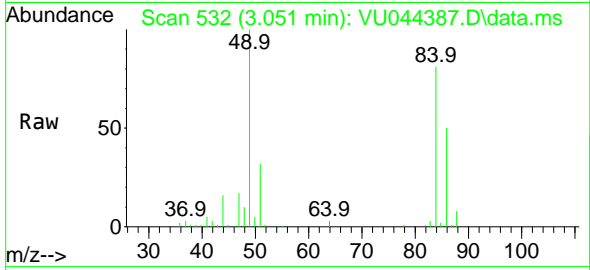
Tgt Ion: 76 Resp: 79274
 Ion Ratio Lower Upper
 76 100
 78 8.5 7.1 10.7



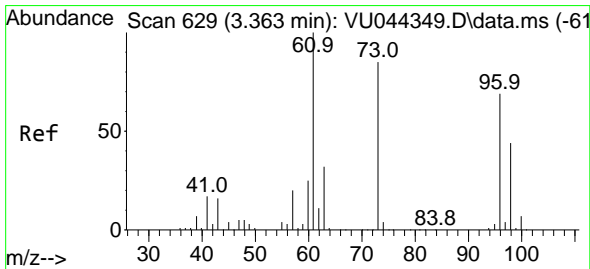
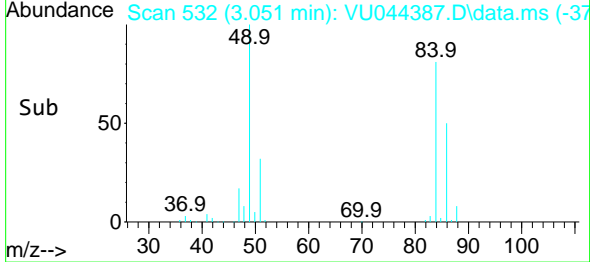
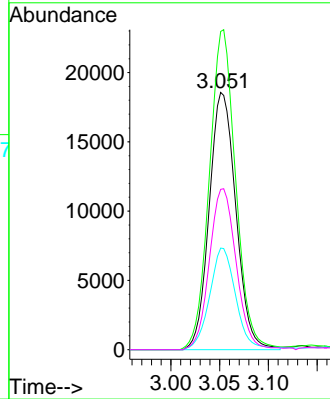


#15
 Methylene Chloride
 Concen: 2.092 ug/l
 RT: 3.051 min Scan# 532
 Delta R.T. -0.003 min
 Lab File: VU044387.D
 Acq: 22 Jul 2021 12:08

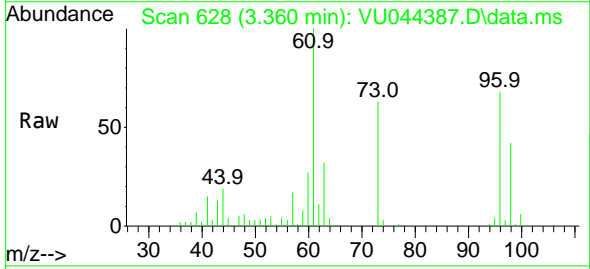
Instrument :
 MSVOA_U
 ClientSampled :



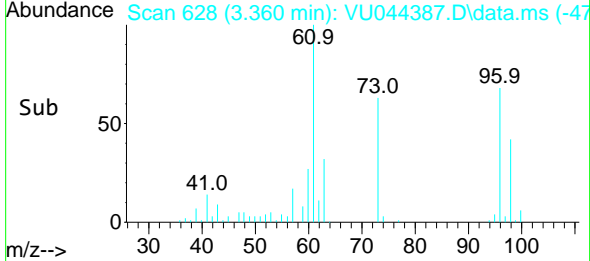
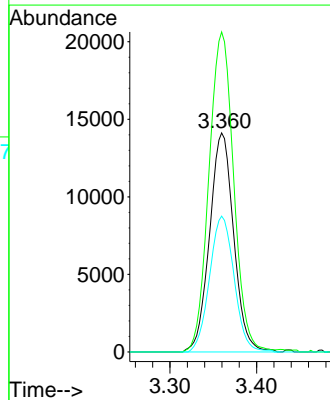
Tgt Ion: 84 Resp: 35384
 Ion Ratio Lower Upper
 84 100
 49 123.7 106.3 159.5
 51 39.5 0.0 81.8
 86 62.3 51.4 77.0

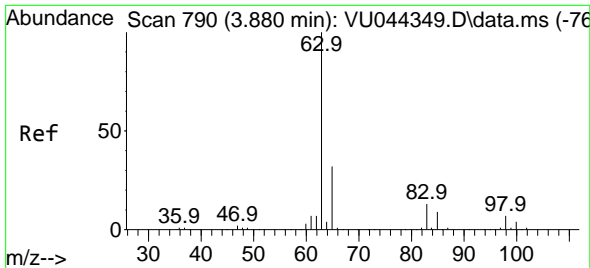


#16
 trans-1,2-Dichloroethene
 Concen: 2.058 ug/l
 RT: 3.360 min Scan# 628
 Delta R.T. -0.003 min
 Lab File: VU044387.D
 Acq: 22 Jul 2021 12:08



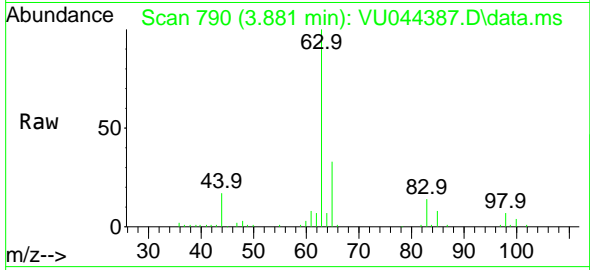
Tgt Ion: 96 Resp: 27364
 Ion Ratio Lower Upper
 96 100
 61 146.1 119.3 178.9
 98 62.0 50.8 76.2



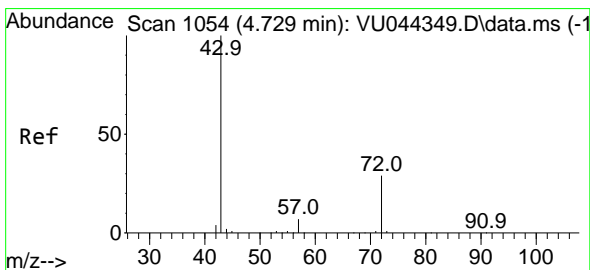
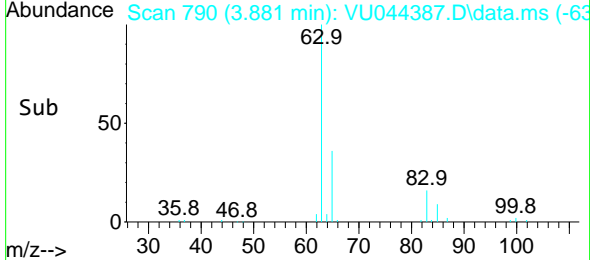
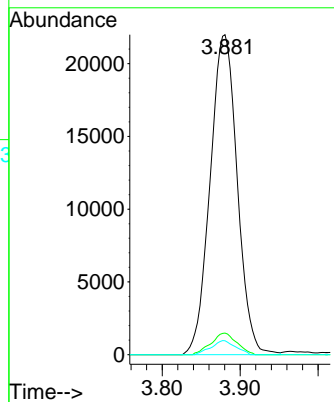


#17
 1,1-Dichloroethane
 Concen: 2.149 ug/l
 RT: 3.881 min Scan# 790
 Delta R.T. 0.000 min
 Lab File: VU044387.D
 Acq: 22 Jul 2021 12:08

Instrument : MSVOA_U
 ClientSampled :

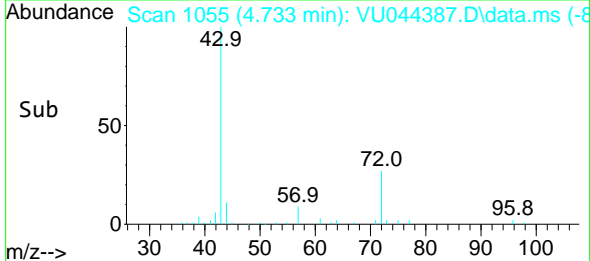
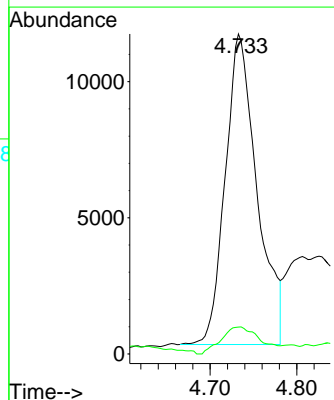
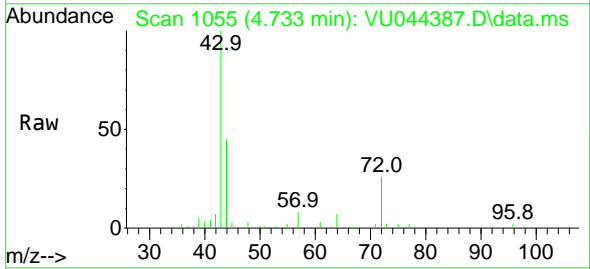


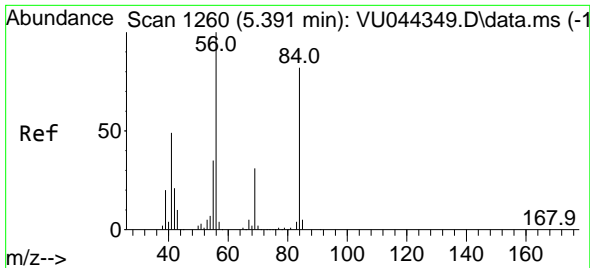
| Tgt Ion | Resp | Lower | Upper |
|---------|------|-------|-------|
| 63 | 100 | | |
| 98 | 6.7 | 3.5 | 10.5 |
| 100 | 4.3 | 2.0 | 5.8 |



#18
 2-Butanone
 Concen: 9.957 ug/l
 RT: 4.733 min Scan# 1055
 Delta R.T. 0.004 min
 Lab File: VU044387.D
 Acq: 22 Jul 2021 12:08

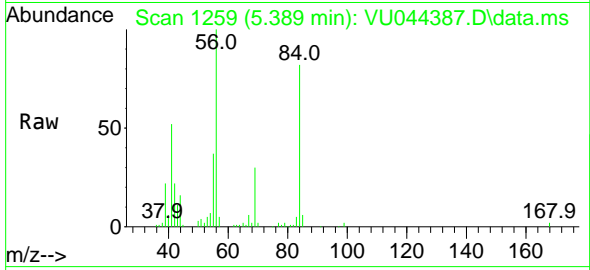
| Tgt Ion | Resp | Lower | Upper |
|---------|------|-------|-------|
| 43 | 100 | | |
| 57 | 7.5 | 0.0 | 17.6 |





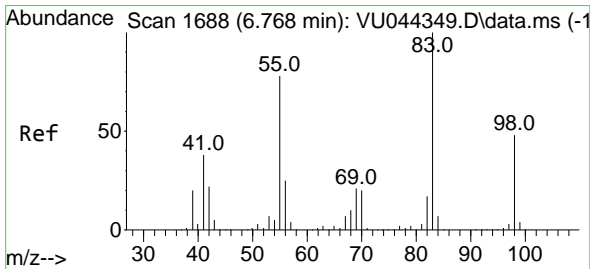
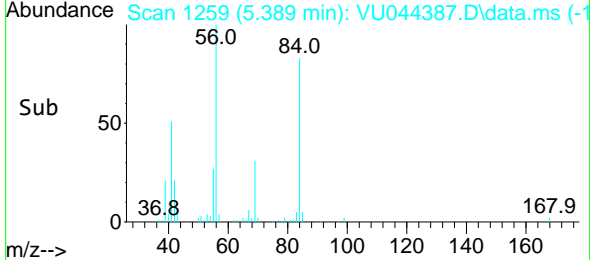
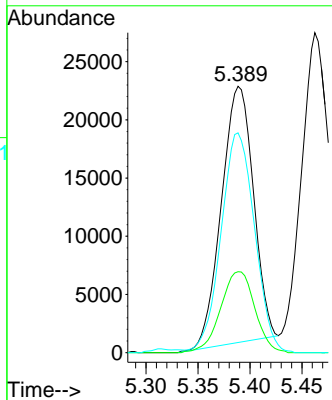
#19
 Cyclohexane
 Concen: 2.083 ug/l
 RT: 5.389 min Scan# 1259
 Delta R.T. -0.003 min
 Lab File: VU044387.D
 Acq: 22 Jul 2021 12:08

Instrument :
 MSVOA_U
 ClientSampled :

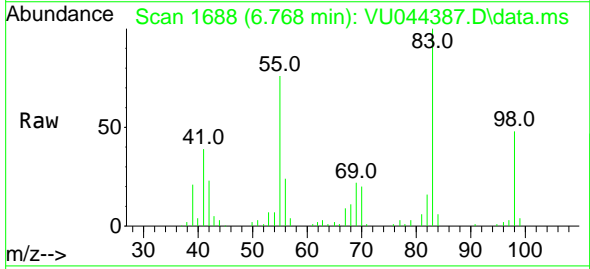


Tgt Ion: 56 Resp: 47137

| Ion | Ratio | Lower | Upper |
|-----|-------|-------|-------|
| 56 | 100 | | |
| 69 | 33.9 | 26.6 | 40.0 |
| 84 | 88.9 | 73.0 | 109.4 |

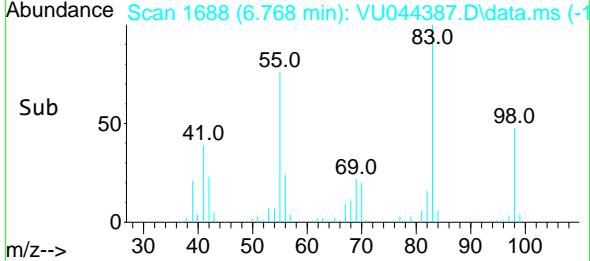
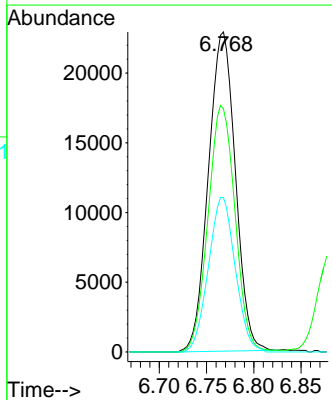


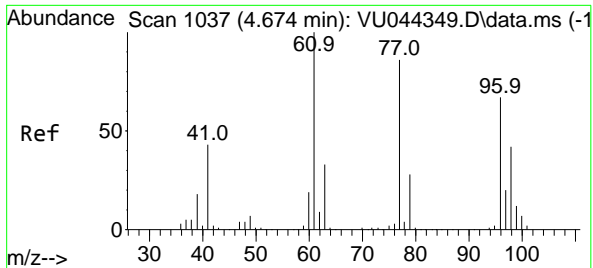
#20
 Methylcyclohexane
 Concen: 1.925 ug/l
 RT: 6.768 min Scan# 1688
 Delta R.T. 0.000 min
 Lab File: VU044387.D
 Acq: 22 Jul 2021 12:08



Tgt Ion: 83 Resp: 45426

| Ion | Ratio | Lower | Upper |
|-----|-------|-------|-------|
| 83 | 100 | | |
| 55 | 76.7 | 61.0 | 91.6 |
| 98 | 48.2 | 39.3 | 58.9 |

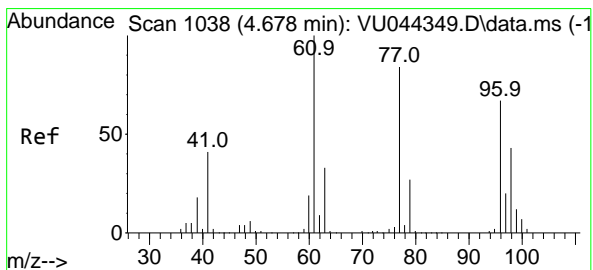
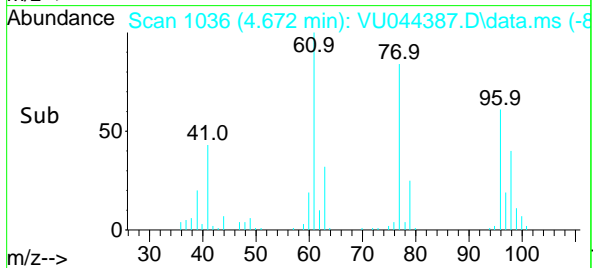
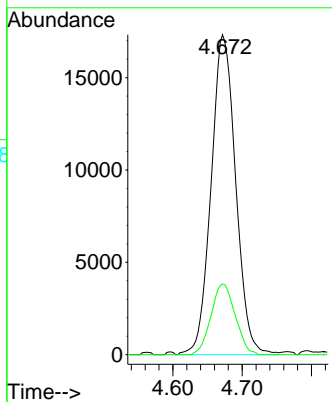
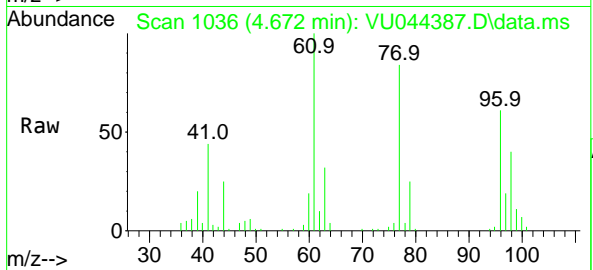




#21
 2,2-Dichloropropane
 Concen: 2.103 ug/l
 RT: 4.672 min Scan# 1036
 Delta R.T. -0.003 min
 Lab File: VU044387.D
 Acq: 22 Jul 2021 12:08

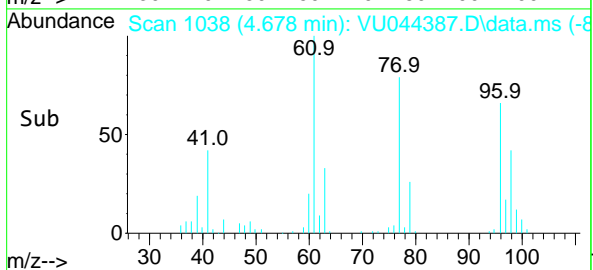
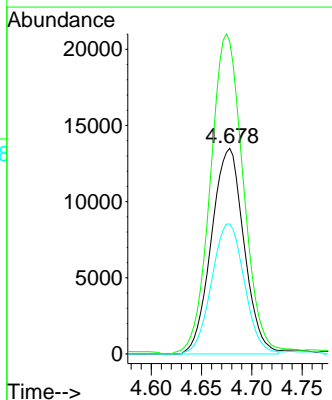
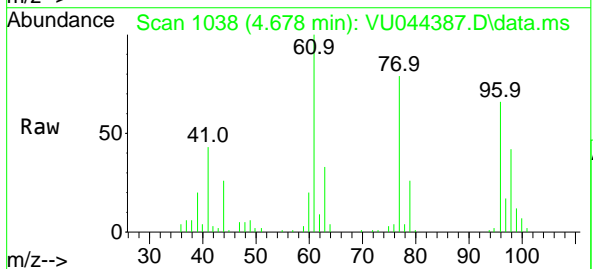
Instrument :
 MSVOA_U
 ClientSampled :

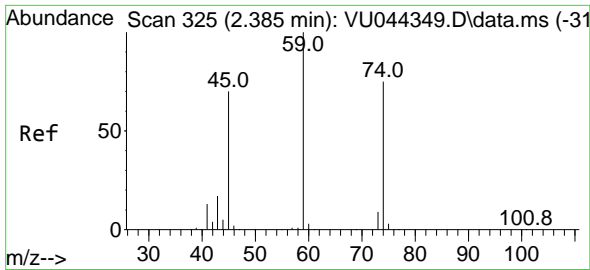
Tgt Ion: 77 Resp: 42686
 Ion Ratio Lower Upper
 77 100
 97 21.8 16.8 25.2



#22
 cis-1,2-Dichloroethene
 Concen: 2.095 ug/l
 RT: 4.678 min Scan# 1038
 Delta R.T. 0.000 min
 Lab File: VU044387.D
 Acq: 22 Jul 2021 12:08

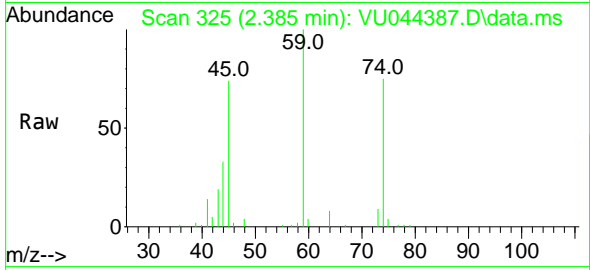
Tgt Ion: 96 Resp: 30432
 Ion Ratio Lower Upper
 96 100
 61 157.4 0.0 407.7
 98 63.6 32.5 97.4





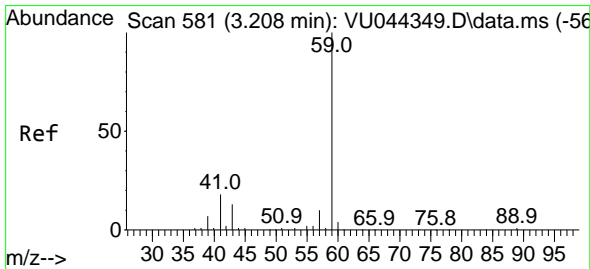
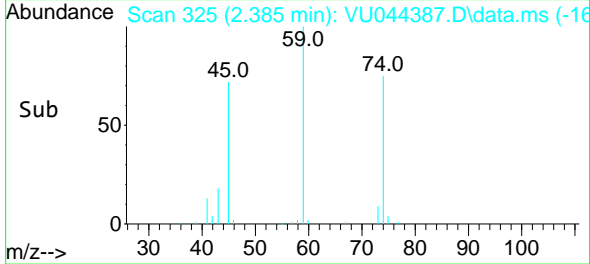
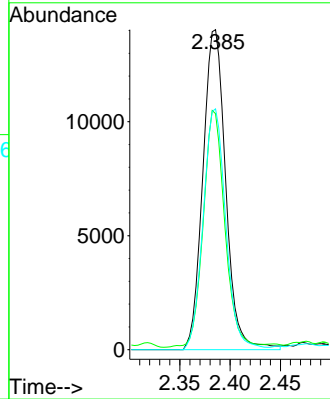
#23
 Diethyl Ether
 Concen: 2.213 ug/l
 RT: 2.385 min Scan# 325
 Delta R.T. 0.000 min
 Lab File: VU044387.D
 Acq: 22 Jul 2021 12:08

Instrument :
 MSVOA_U
 ClientSampled :



Tgt Ion: 59 Resp: 22133

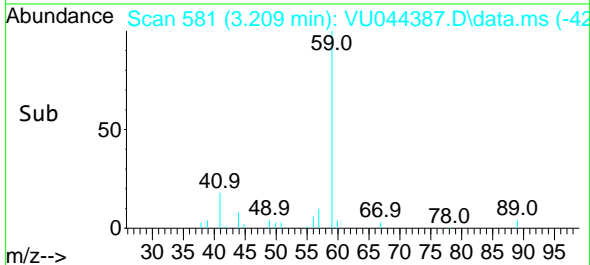
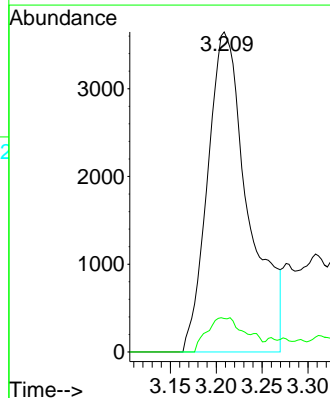
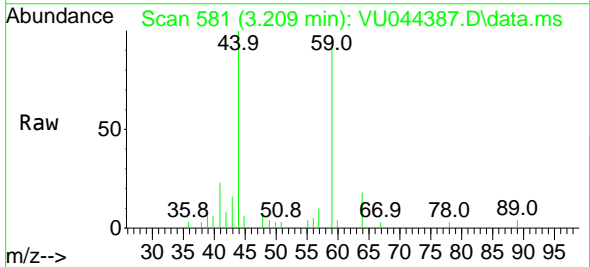
| Ion | Ratio | Lower | Upper |
|-----|-------|-------|-------|
| 59 | 100 | | |
| 45 | 69.9 | 55.7 | 83.5 |
| 74 | 74.7 | 59.7 | 89.5 |

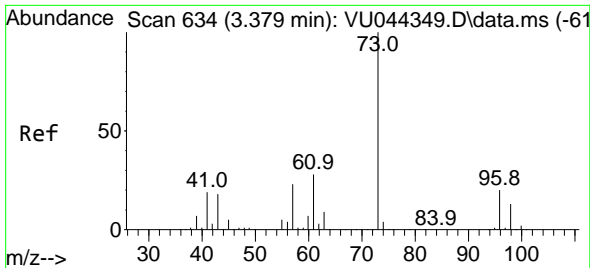


#24
 tert-Butyl Alcohol
 Concen: 18.981 ug/l
 RT: 3.209 min Scan# 581
 Delta R.T. 0.000 min
 Lab File: VU044387.D
 Acq: 22 Jul 2021 12:08

Tgt Ion: 59 Resp: 11263

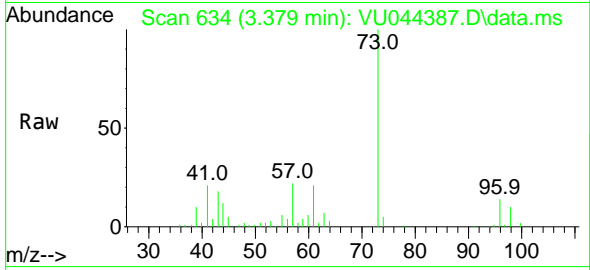
| Ion | Ratio | Lower | Upper |
|-----|-------|-------|-------|
| 59 | 100 | | |
| 57 | 9.1 | 8.2 | 12.4 |



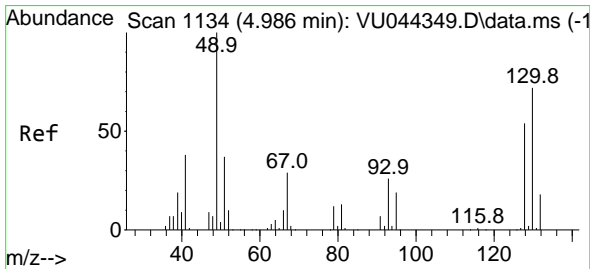
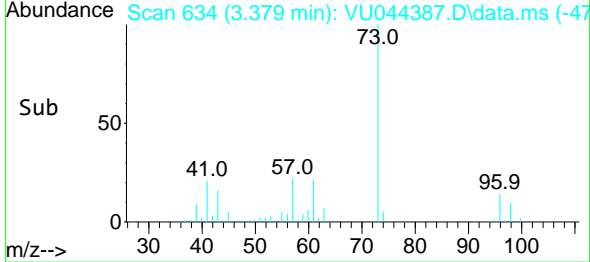
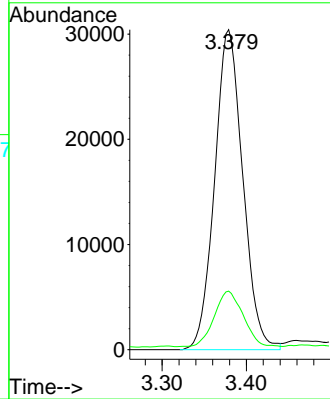


#25
 Methyl tert-Butyl Ether
 Concen: 2.121 ug/l
 RT: 3.379 min Scan# 634
 Delta R.T. 0.000 min
 Lab File: VU044387.D
 Acq: 22 Jul 2021 12:08

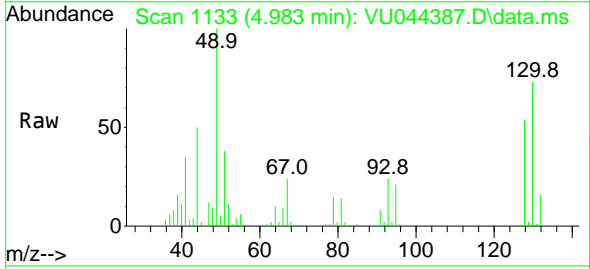
Instrument : MSVOA_U
 ClientSampled :



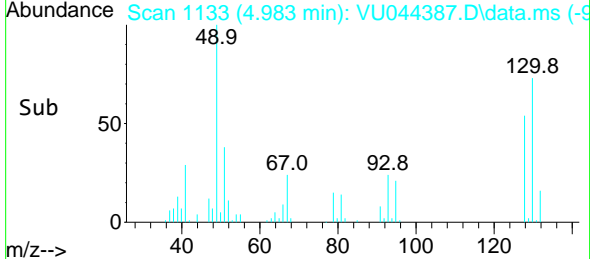
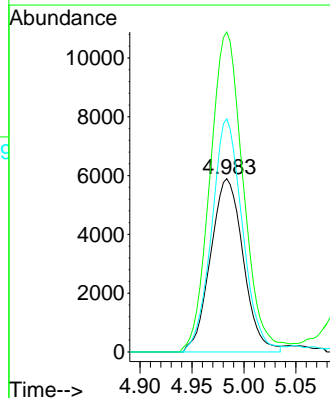
Tgt Ion: 73 Resp: 70555
 Ion Ratio Lower Upper
 73 100
 43 17.6 17.3 25.9

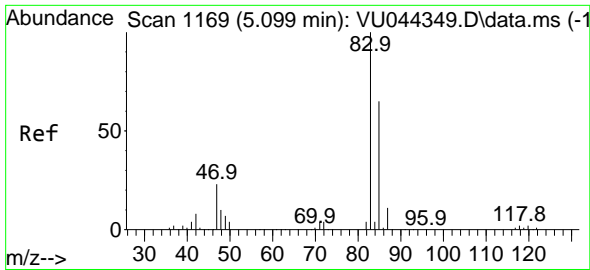


#26
 Bromochloromethane
 Concen: 2.099 ug/l
 RT: 4.983 min Scan# 1133
 Delta R.T. -0.003 min
 Lab File: VU044387.D
 Acq: 22 Jul 2021 12:08



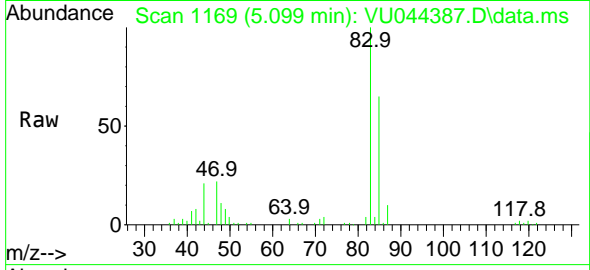
Tgt Ion:128 Resp: 12906
 Ion Ratio Lower Upper
 128 100
 49 187.6 0.0 364.2
 130 127.3 103.5 155.3



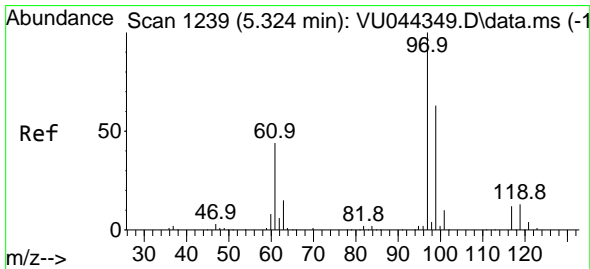
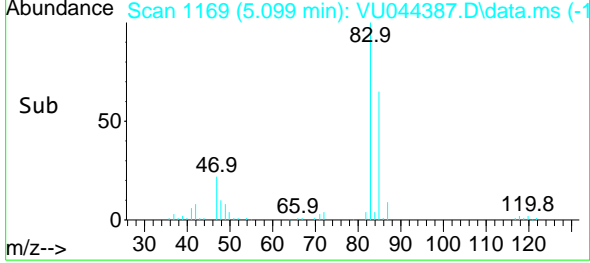
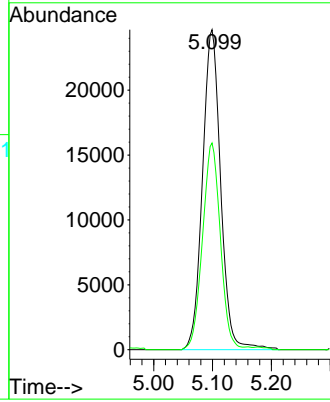


#27
 Chloroform
 Concen: 2.208 ug/l
 RT: 5.099 min Scan# 1169
 Delta R.T. 0.000 min
 Lab File: VU044387.D
 Acq: 22 Jul 2021 12:08

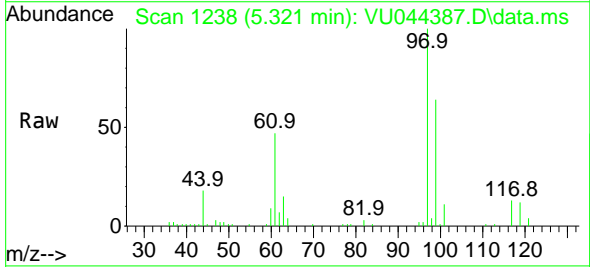
Instrument :
 MSVOA_U
 ClientSampled :



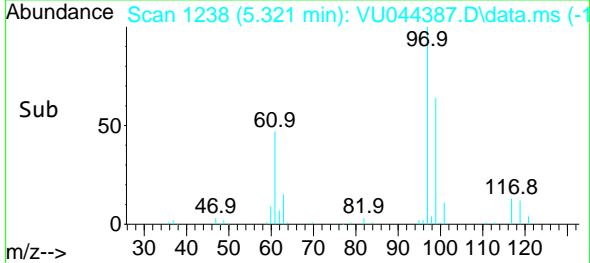
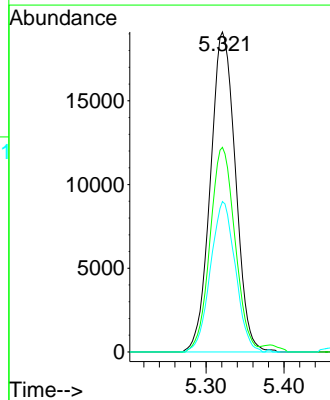
Tgt Ion: 83 Resp: 52900
 Ion Ratio Lower Upper
 83 100
 85 64.6 0.0 127.8

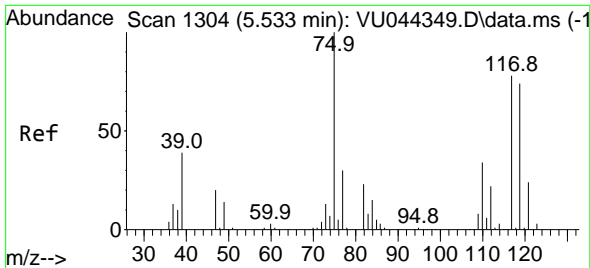


#28
 1,1,1-Trichloroethane
 Concen: 2.138 ug/l
 RT: 5.321 min Scan# 1238
 Delta R.T. -0.003 min
 Lab File: VU044387.D
 Acq: 22 Jul 2021 12:08



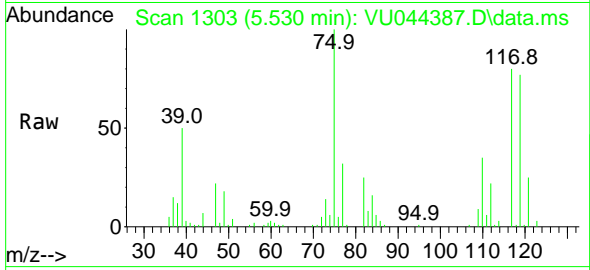
Tgt Ion: 97 Resp: 42727
 Ion Ratio Lower Upper
 97 100
 99 63.8 32.0 96.2
 61 46.8 23.8 71.5



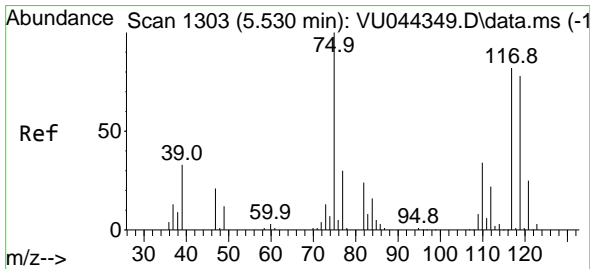
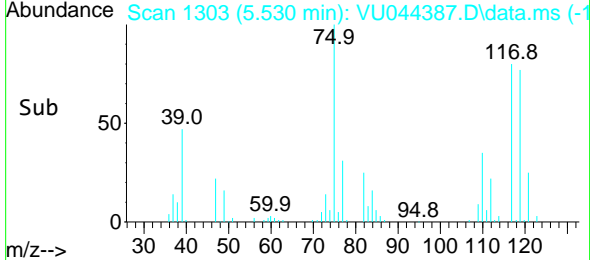
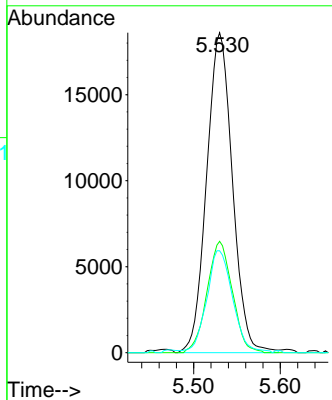


#29
 1,1-Dichloropropene
 Concen: 2.026 ug/l
 RT: 5.530 min Scan# 1303
 Delta R.T. -0.003 min
 Lab File: VU044387.D
 Acq: 22 Jul 2021 12:08

Instrument :
 MSVOA_U
 ClientSampled :

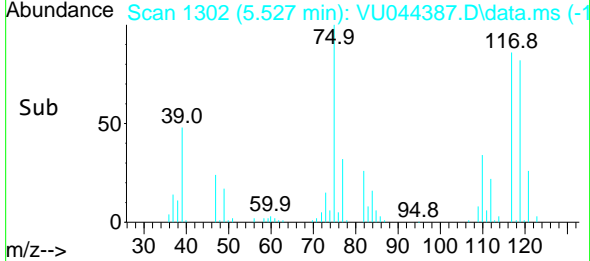
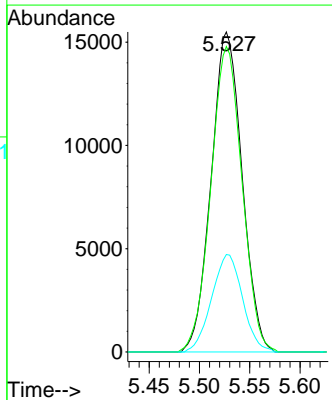
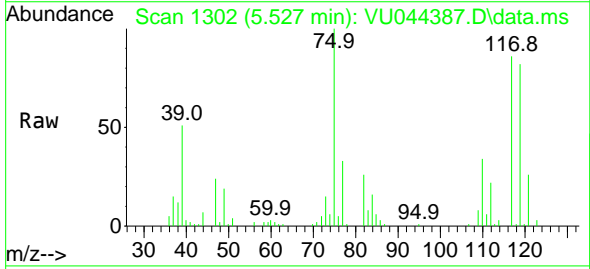


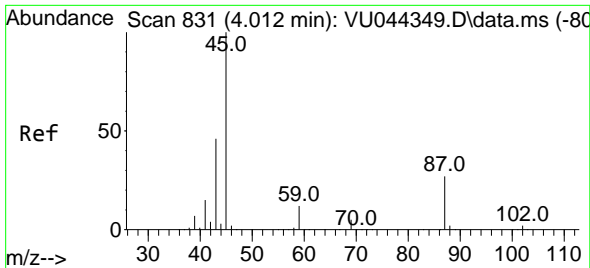
Tgt Ion: 75 Resp: 38472
 Ion Ratio Lower Upper
 75 100
 110 34.0 17.3 51.9
 77 32.1 24.6 37.0



#30
 Carbon Tetrachloride
 Concen: 1.988 ug/l
 RT: 5.527 min Scan# 1302
 Delta R.T. -0.003 min
 Lab File: VU044387.D
 Acq: 22 Jul 2021 12:08

Tgt Ion: 117 Resp: 33128
 Ion Ratio Lower Upper
 117 100
 119 95.4 77.0 115.6
 121 30.5 24.2 36.4

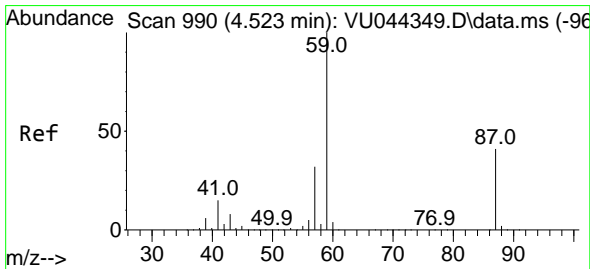
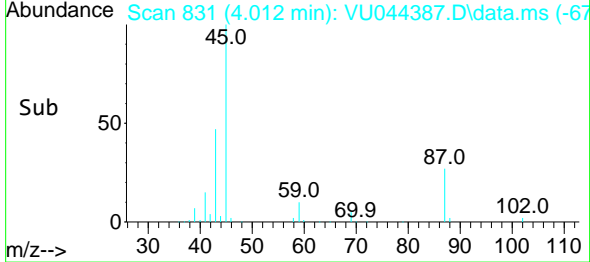
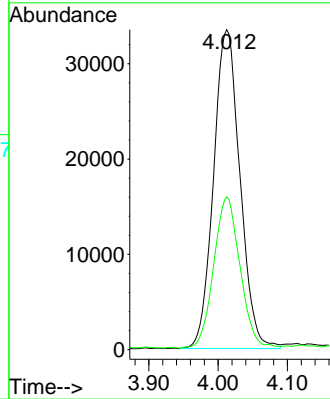
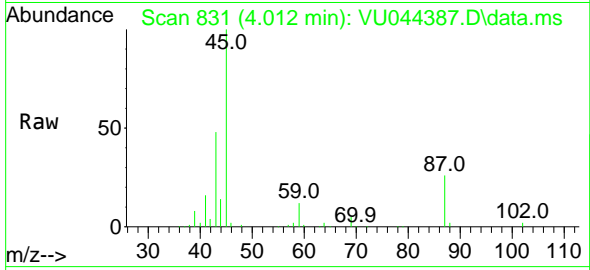




#31
 Isopropyl Ether
 Concen: 2.154 ug/l
 RT: 4.012 min Scan# 831
 Delta R.T. 0.000 min
 Lab File: VU044387.D
 Acq: 22 Jul 2021 12:08

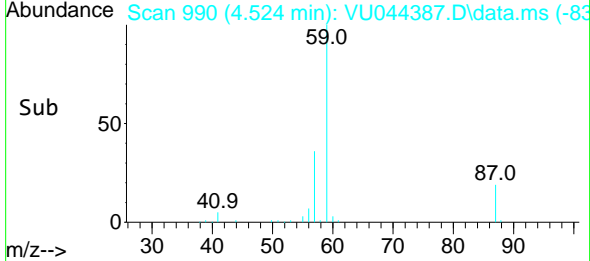
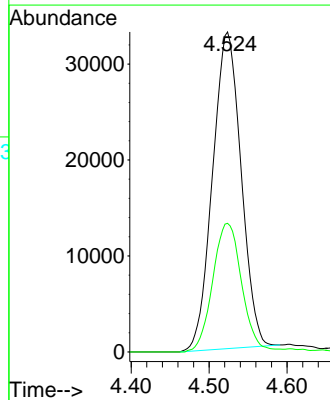
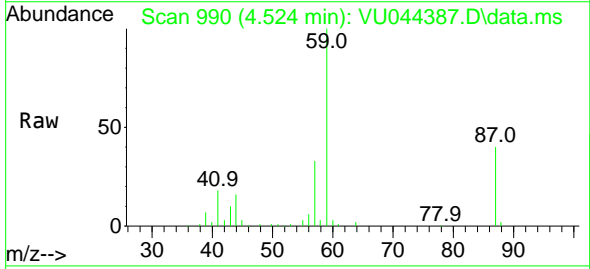
Instrument :
 MSVOA_U
 ClientSampled :

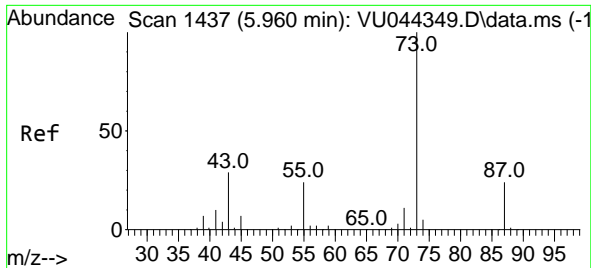
Tgt Ion: 45 Resp: 88703
 Ion Ratio Lower Upper
 45 100
 43 47.0 24.9 74.6



#32
 Ethyl-t-butyl ether
 Concen: 2.063 ug/l
 RT: 4.524 min Scan# 990
 Delta R.T. 0.000 min
 Lab File: VU044387.D
 Acq: 22 Jul 2021 12:08

Tgt Ion: 59 Resp: 83802
 Ion Ratio Lower Upper
 59 100
 87 40.2 31.3 46.9

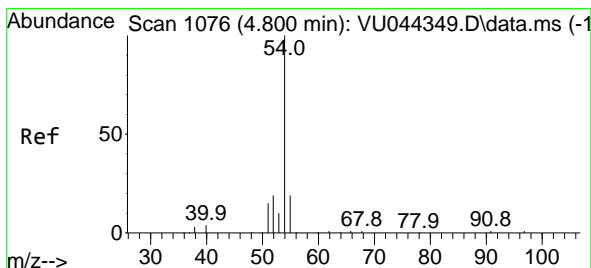
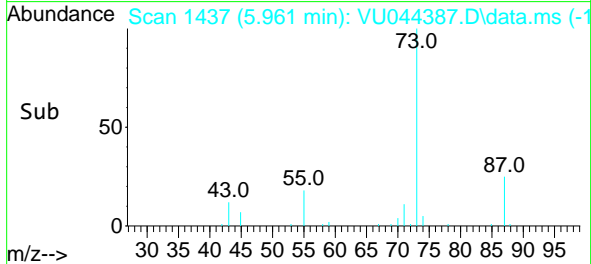
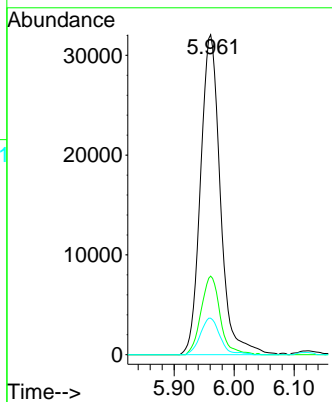
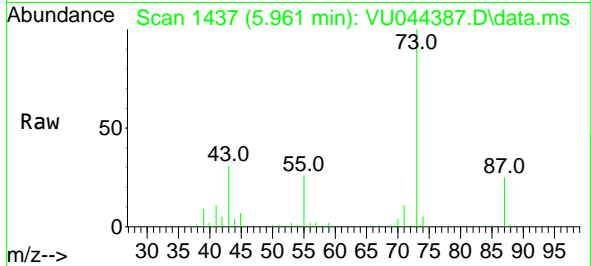




#33
 Tert-Amyl methyl ether
 Concen: 2.040 ug/l
 RT: 5.961 min Scan# 1437
 Delta R.T. 0.000 min
 Lab File: VU044387.D
 Acq: 22 Jul 2021 12:08

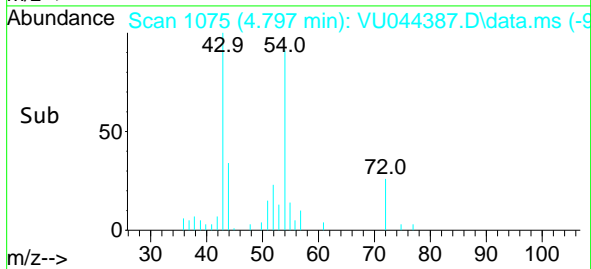
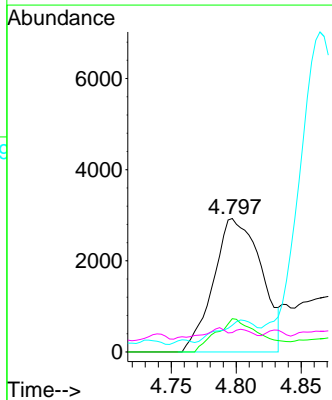
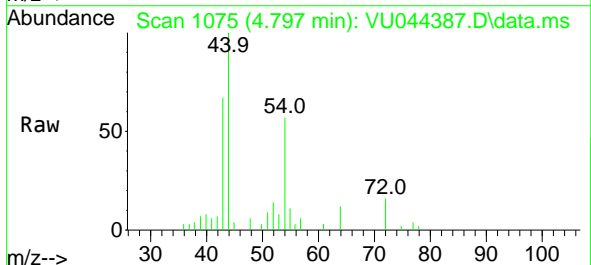
Instrument :
 MSVOA_U
 ClientSampled :

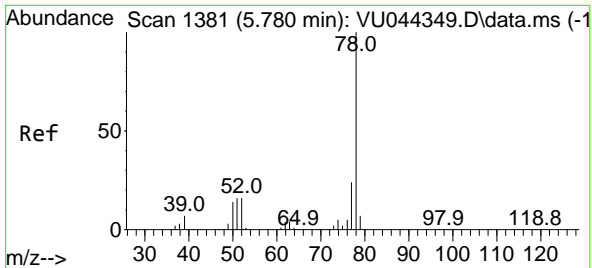
| Tgt Ion | Resp | Lower | Upper |
|---------|------|-------|-------|
| 73 | 100 | | |
| 87 | 23.7 | 19.8 | 29.6 |
| 71 | 11.4 | 9.1 | 13.7 |



#34
 Propionitrile
 Concen: 9.031 ug/l
 RT: 4.797 min Scan# 1075
 Delta R.T. -0.003 min
 Lab File: VU044387.D
 Acq: 22 Jul 2021 12:08

| Tgt Ion | Resp | Lower | Upper |
|---------|------|-------|-------|
| 54 | 100 | | |
| 52 | 24.0 | 16.3 | 24.5 |
| 55 | 12.7 | 10.7 | 16.1 |
| 40 | 1.4 | 5.8 | 8.8# |

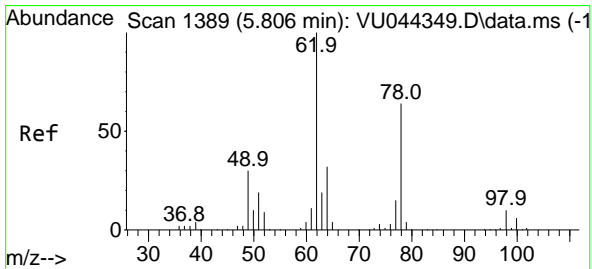
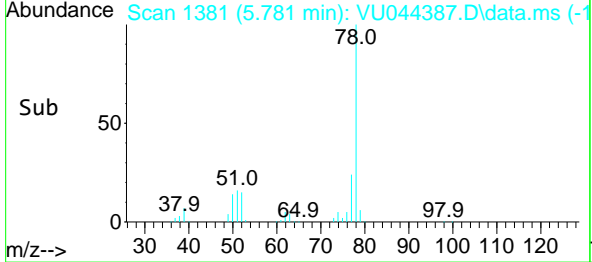
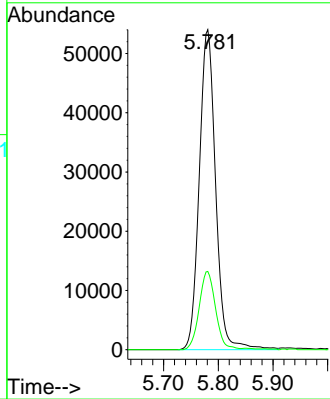
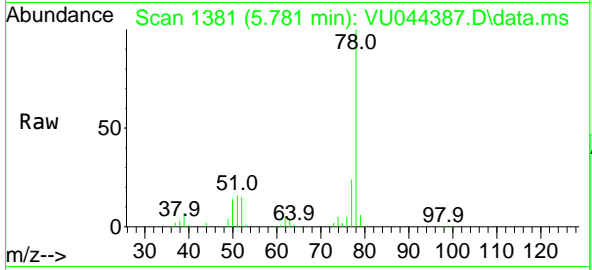




#35
Benzene
Concen: 2.034 ug/l
RT: 5.781 min Scan# 1381
Delta R.T. 0.000 min
Lab File: VU044387.D
Acq: 22 Jul 2021 12:08

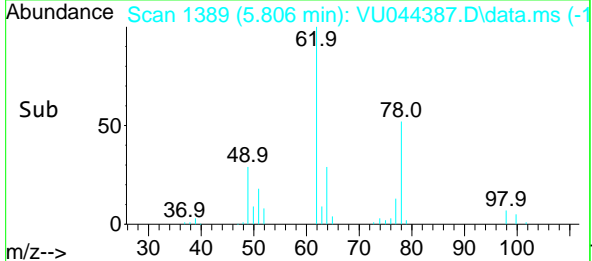
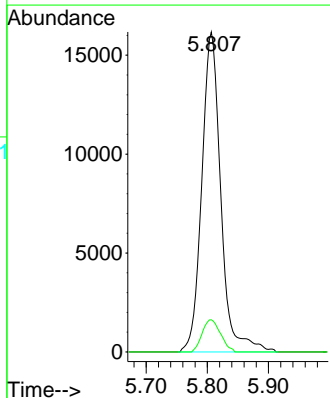
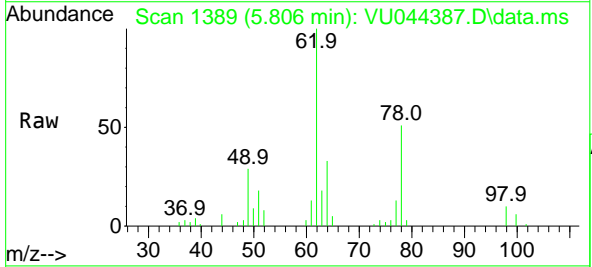
Instrument :
MSVOA_U
ClientSampled :

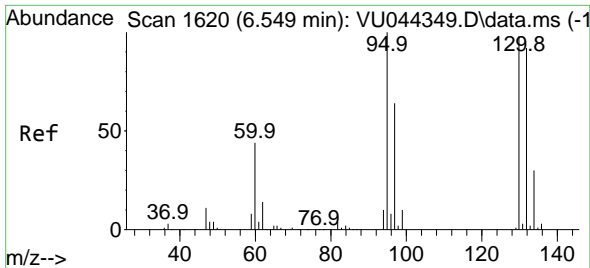
Tgt Ion: 78 Resp: 112211
Ion Ratio Lower Upper
78 100
77 24.4 19.4 29.0



#36
1,2-Dichloroethane
Concen: 2.209 ug/l
RT: 5.806 min Scan# 1389
Delta R.T. 0.000 min
Lab File: VU044387.D
Acq: 22 Jul 2021 12:08

Tgt Ion: 62 Resp: 34976
Ion Ratio Lower Upper
62 100
98 9.7 7.0 10.6

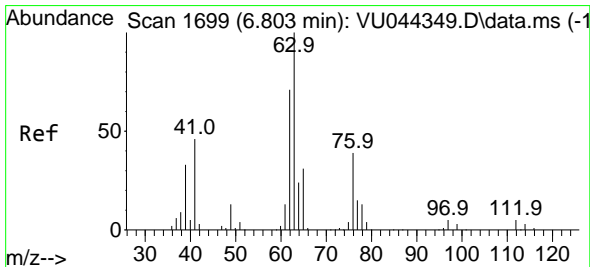
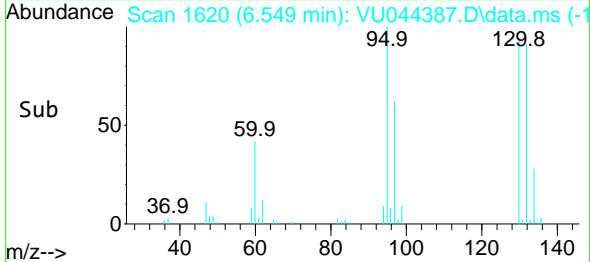
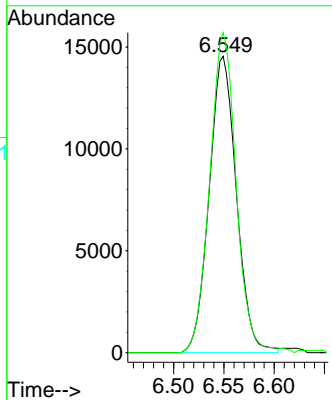
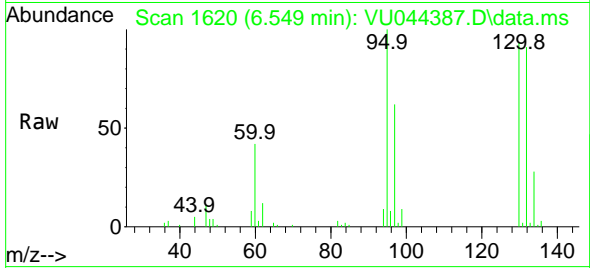




#37
 Trichloroethene
 Concen: 1.974 ug/l
 RT: 6.549 min Scan# 1620
 Delta R.T. 0.000 min
 Lab File: VU044387.D
 Acq: 22 Jul 2021 12:08

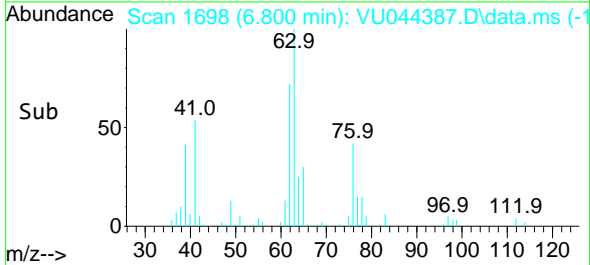
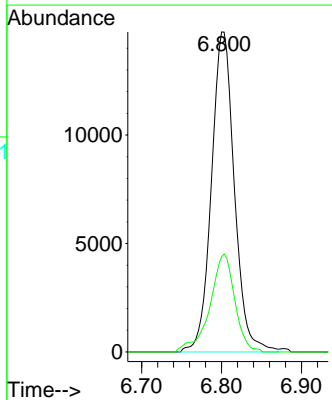
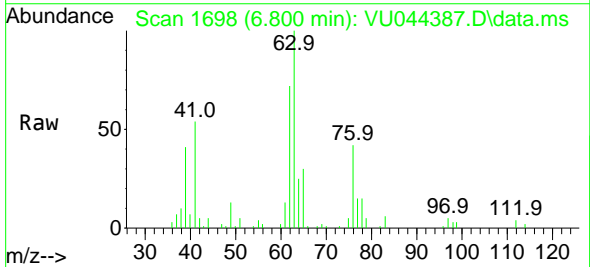
Instrument : MSVOA_U
 ClientSampled :

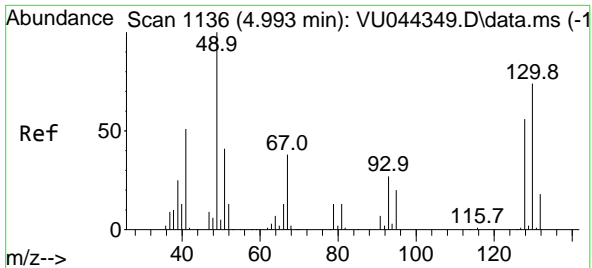
Tgt Ion:130 Resp: 27382
 Ion Ratio Lower Upper
 130 100
 95 108.0 77.8 116.6



#38
 1,2-Dichloropropane
 Concen: 2.010 ug/l
 RT: 6.800 min Scan# 1698
 Delta R.T. -0.003 min
 Lab File: VU044387.D
 Acq: 22 Jul 2021 12:08

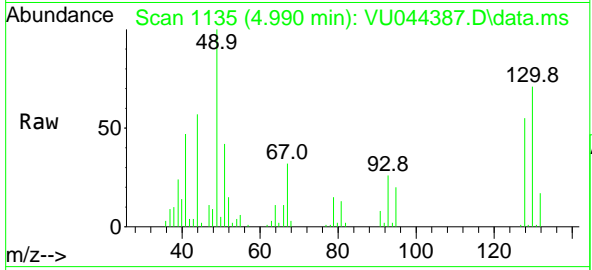
Tgt Ion: 63 Resp: 29358
 Ion Ratio Lower Upper
 63 100
 65 29.8 24.7 37.1





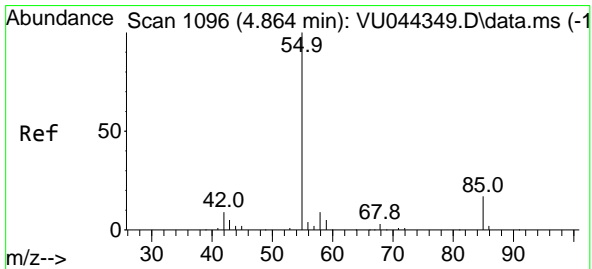
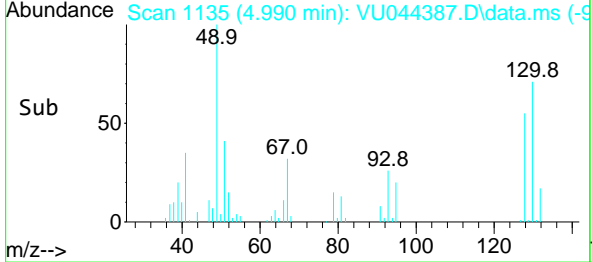
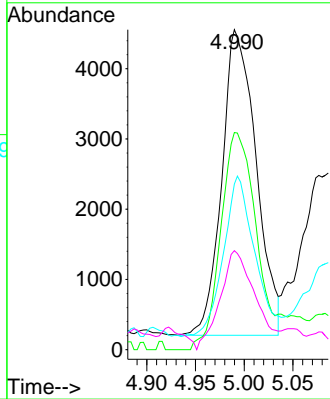
#39
 Methacrylonitrile
 Concen: 2.261 ug/l
 RT: 4.990 min Scan# 1135
 Delta R.T. -0.003 min
 Lab File: VU044387.D
 Acq: 22 Jul 2021 12:08

Instrument :
 MSVOA_U
 ClientSampled :

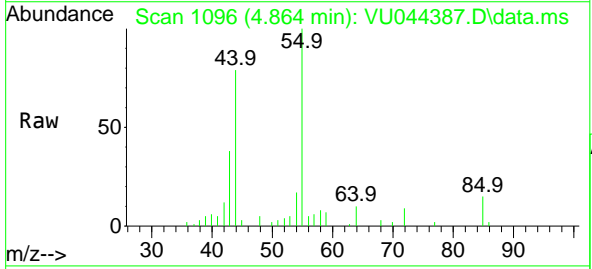


Tgt Ion: 41 Resp: 10657

| Ion | Ratio | Lower | Upper |
|-----|-------|-------|-------|
| 41 | 100 | | |
| 67 | 75.9 | 60.6 | 91.0 |
| 39 | 48.4 | 43.9 | 65.9 |
| 52 | 33.1 | 23.5 | 35.3 |

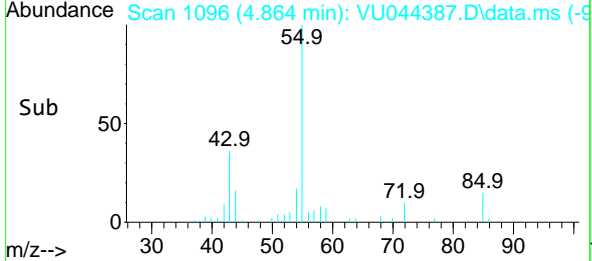
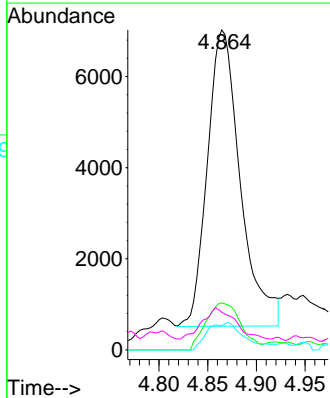


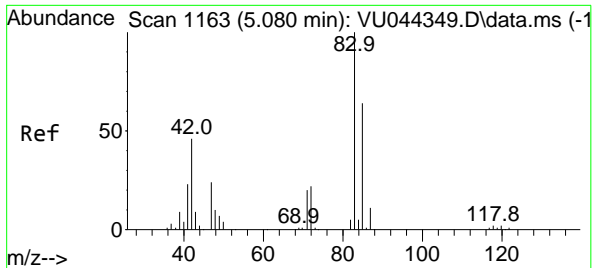
#40
 Methyl acrylate
 Concen: 2.085 ug/l
 RT: 4.864 min Scan# 1096
 Delta R.T. 0.000 min
 Lab File: VU044387.D
 Acq: 22 Jul 2021 12:08



Tgt Ion: 55 Resp: 15292

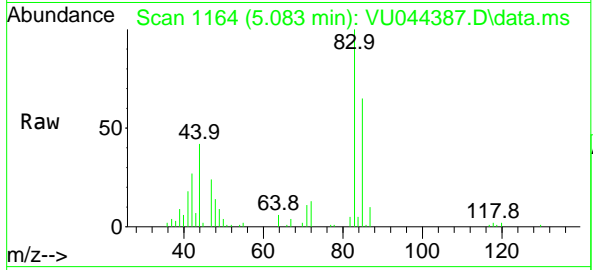
| Ion | Ratio | Lower | Upper |
|-----|-------|-------|-------|
| 55 | 100 | | |
| 85 | 16.9 | 14.6 | 21.8 |
| 58 | 10.5 | 9.0 | 13.4 |
| 42 | 10.3 | 8.2 | 12.2 |



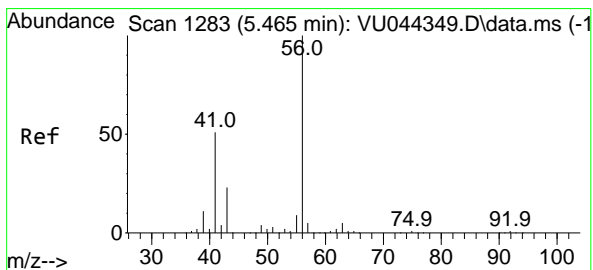
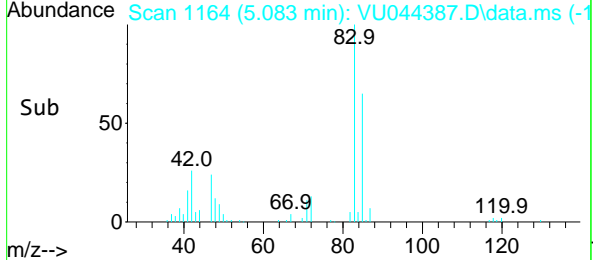
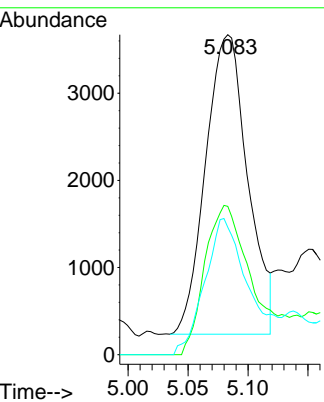


#41
 Tetrahydrofuran
 Concen: 3.755 ug/l
 RT: 5.083 min Scan# 1164
 Delta R.T. 0.004 min
 Lab File: VU044387.D
 Acq: 22 Jul 2021 12:08

Instrument :
 MSVOA_U
 ClientSampled :

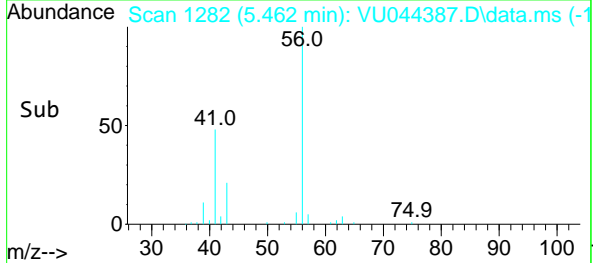
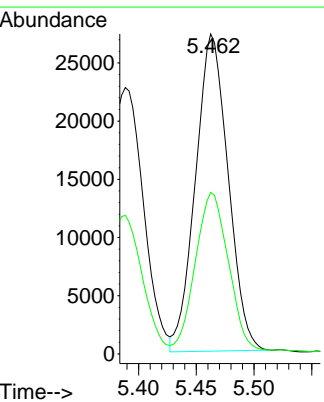
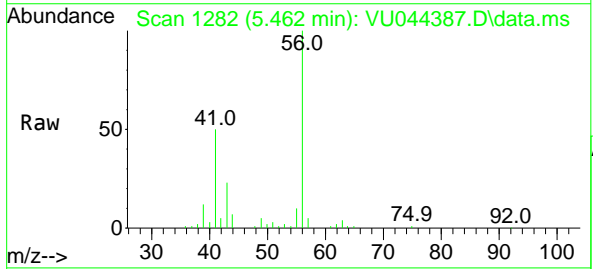


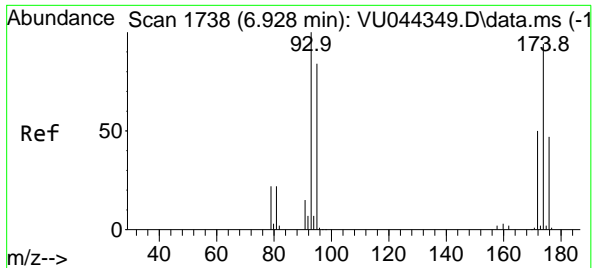
| Tgt Ion | Resp | Lower | Upper |
|---------|------|-------|-------|
| 42 | 100 | | |
| 72 | 57.1 | 39.8 | 59.6 |
| 71 | 48.5 | 34.4 | 51.6 |



#42
 1-Chlorobutane
 Concen: 1.995 ug/l
 RT: 5.462 min Scan# 1282
 Delta R.T. -0.003 min
 Lab File: VU044387.D
 Acq: 22 Jul 2021 12:08

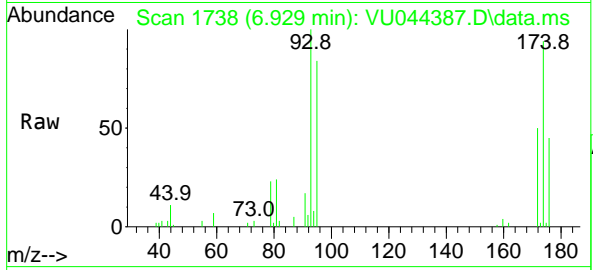
| Tgt Ion | Resp | Lower | Upper |
|---------|------|-------|-------|
| 56 | 100 | | |
| 41 | 50.2 | 27.4 | 82.0 |





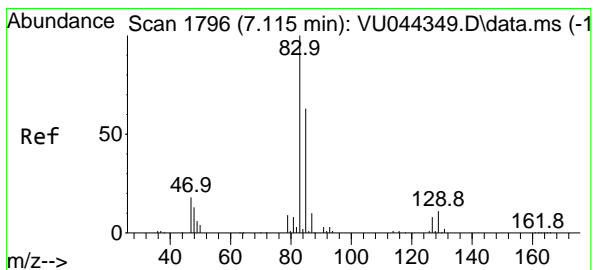
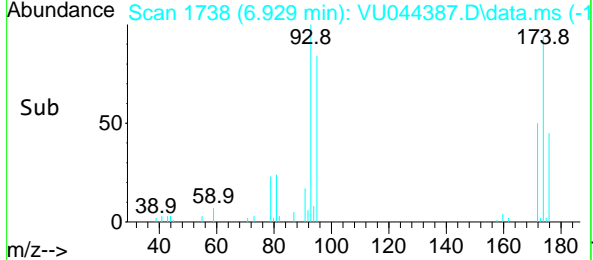
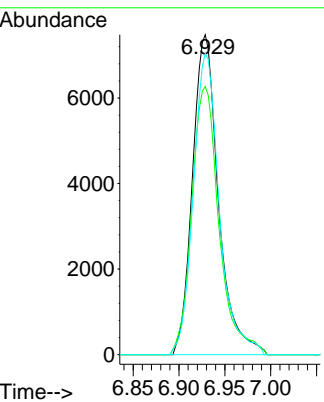
#43
 Dibromomethane
 Concen: 2.033 ug/l
 RT: 6.929 min Scan# 1738
 Delta R.T. 0.000 min
 Lab File: VU044387.D
 Acq: 22 Jul 2021 12:08

Instrument :
 MSVOA_U
 ClientSampled :

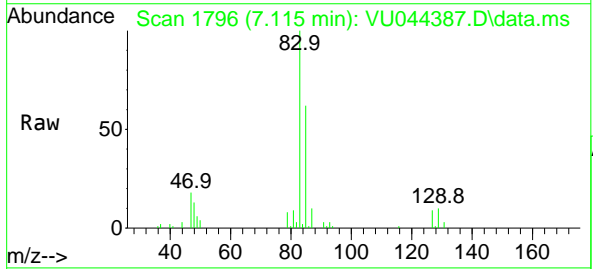


Tgt Ion: 93 Resp: 14729

| Ion | Ratio | Lower | Upper |
|-----|-------|-------|-------|
| 93 | 100 | | |
| 95 | 88.3 | 65.2 | 97.8 |
| 174 | 94.3 | 78.2 | 117.4 |

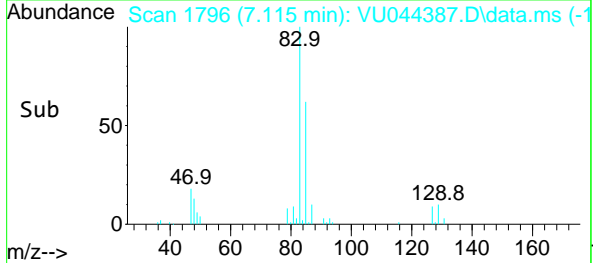
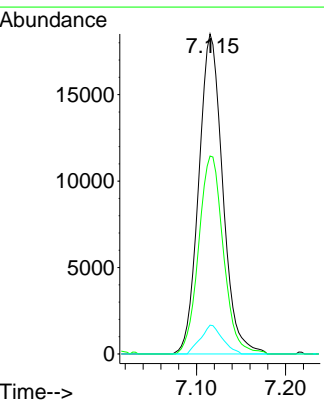


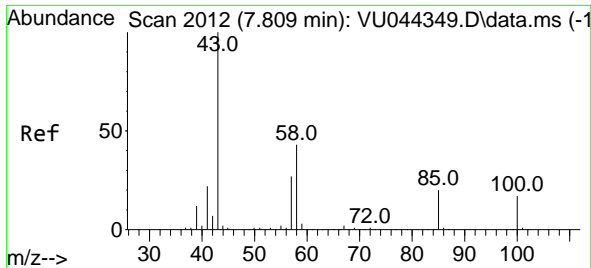
#44
 Bromodichloromethane
 Concen: 2.008 ug/l
 RT: 7.115 min Scan# 1796
 Delta R.T. 0.000 min
 Lab File: VU044387.D
 Acq: 22 Jul 2021 12:08



Tgt Ion: 83 Resp: 34509

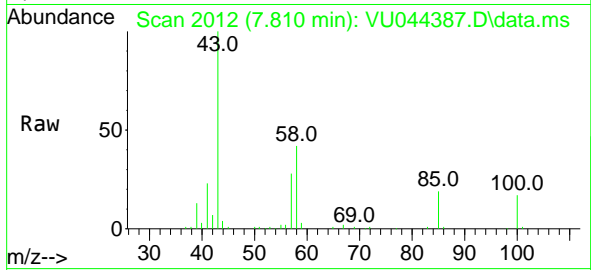
| Ion | Ratio | Lower | Upper |
|-----|-------|-------|-------|
| 83 | 100 | | |
| 85 | 61.8 | 51.3 | 76.9 |
| 127 | 9.0 | 7.3 | 10.9 |



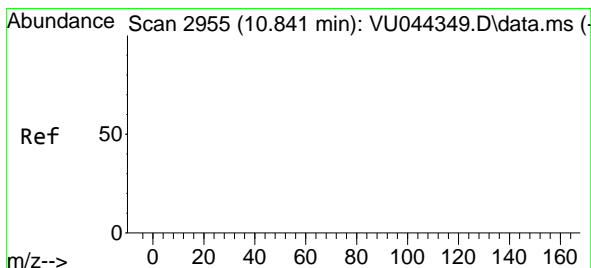
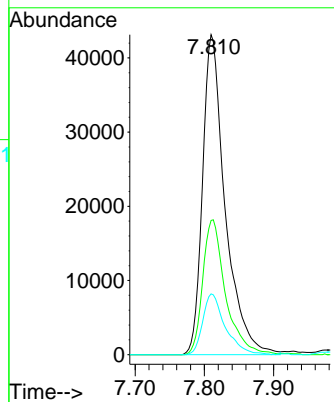
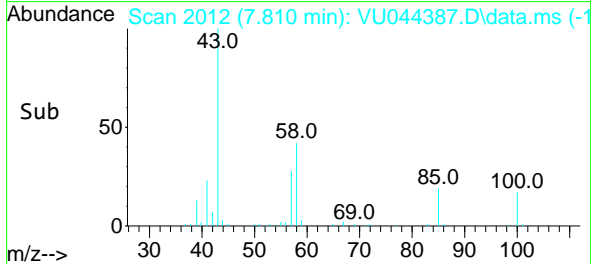


#45
 4-Methyl-2-Pentanone
 Concen: 9.940 ug/l
 RT: 7.810 min Scan# 2012
 Delta R.T. 0.000 min
 Lab File: VU044387.D
 Acq: 22 Jul 2021 12:08

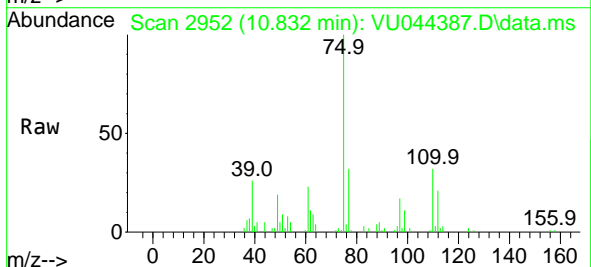
Instrument :
 MSVOA_U
 ClientSampled :



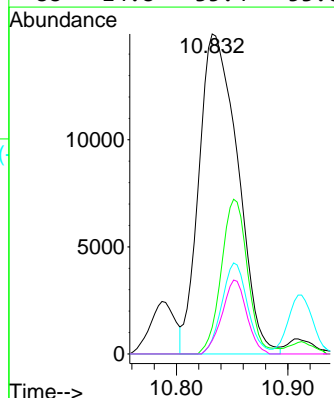
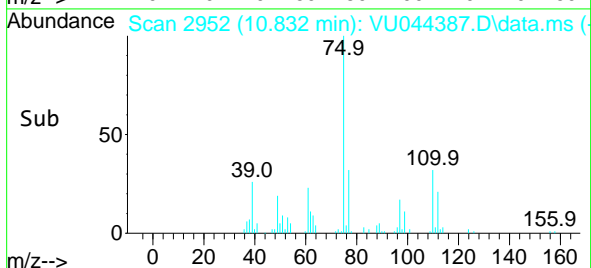
Tgt Ion: 43 Resp: 97813
 Ion Ratio Lower Upper
 43 100
 58 42.5 19.8 59.3
 85 18.9 14.6 21.8

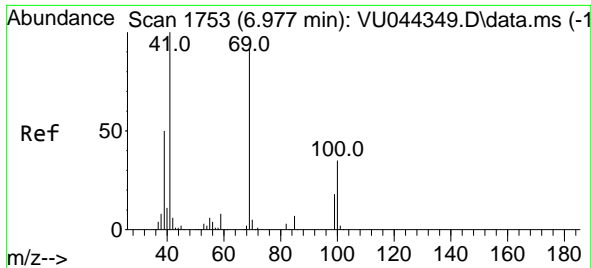


#46
 t-1,4-Dichloro-2-butene
 Concen: 8.629 ug/l
 RT: 10.832 min Scan# 2952
 Delta R.T. -0.009 min
 Lab File: VU044387.D
 Acq: 22 Jul 2021 12:08



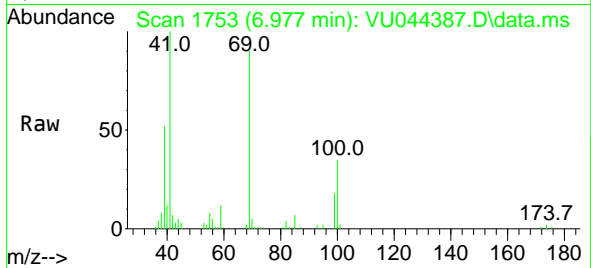
Tgt Ion: 75 Resp: 35981
 Ion Ratio Lower Upper
 75 100
 53 33.1 63.7 95.5#
 89 19.0 44.6 67.0#
 88 14.8 35.4 53.0#



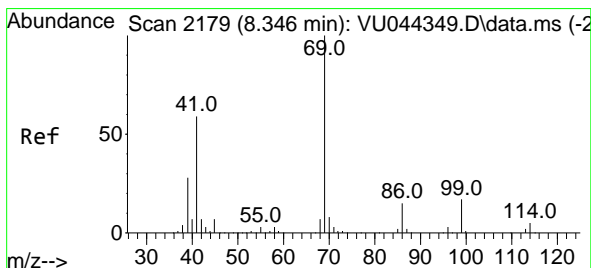
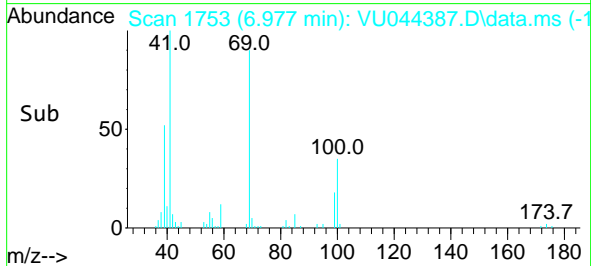
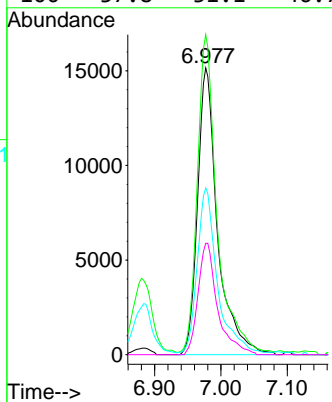


#47
 Methyl methacrylate
 Concen: 3.969 ug/l
 RT: 6.977 min Scan# 1753
 Delta R.T. 0.000 min
 Lab File: VU044387.D
 Acq: 22 Jul 2021 12:08

Instrument :
 MSVOA_U
 ClientSampled :

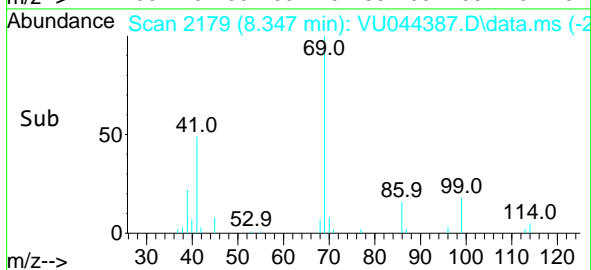
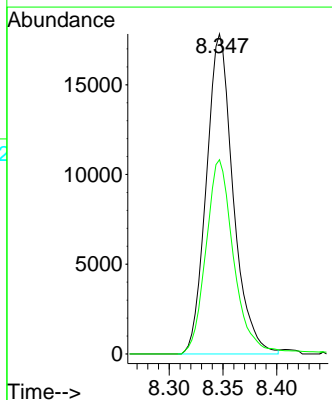
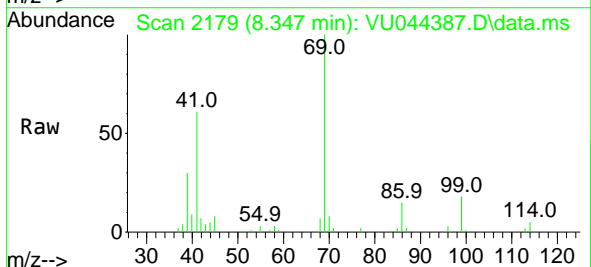


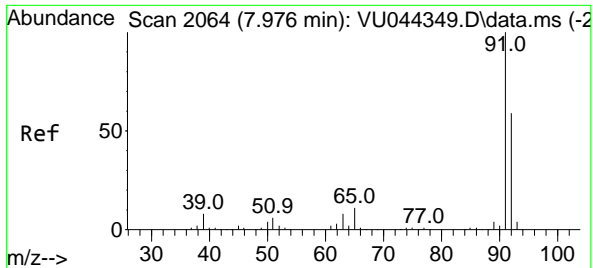
Tgt Ion: 69 Resp: 31784
 Ion Ratio Lower Upper
 69 100
 41 107.8 0.0 232.2
 39 57.3 57.5 86.3#
 100 37.8 31.1 46.7



#48
 Ethyl methacrylate
 Concen: 1.866 ug/l
 RT: 8.347 min Scan# 2179
 Delta R.T. 0.000 min
 Lab File: VU044387.D
 Acq: 22 Jul 2021 12:08

Tgt Ion: 69 Resp: 30849
 Ion Ratio Lower Upper
 69 100
 41 63.8 33.1 99.5

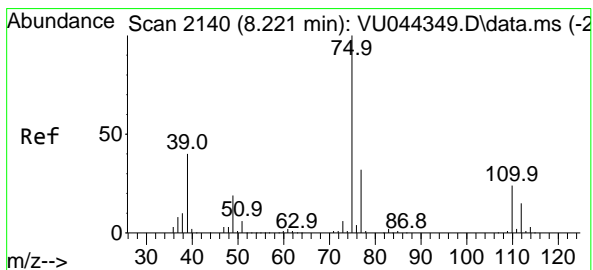
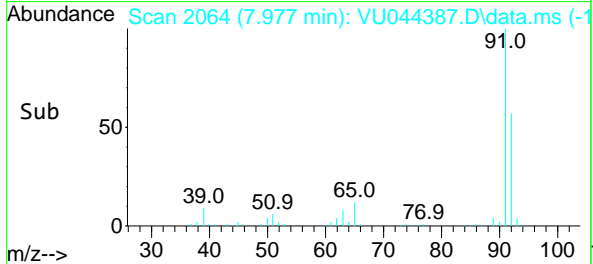
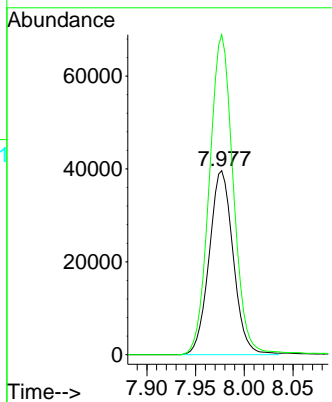
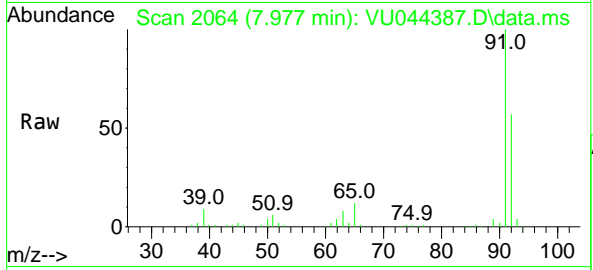




#49
 Toluene
 Concen: 1.959 ug/l
 RT: 7.977 min Scan# 2064
 Delta R.T. 0.000 min
 Lab File: VU044387.D
 Acq: 22 Jul 2021 12:08

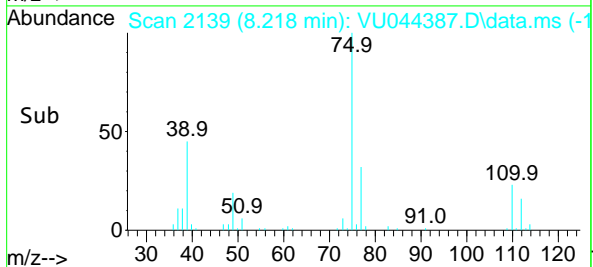
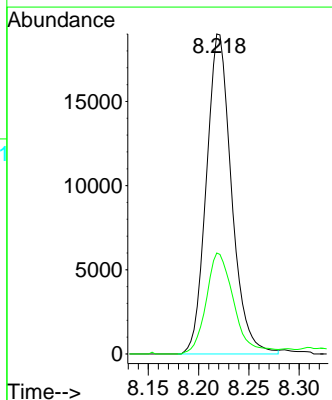
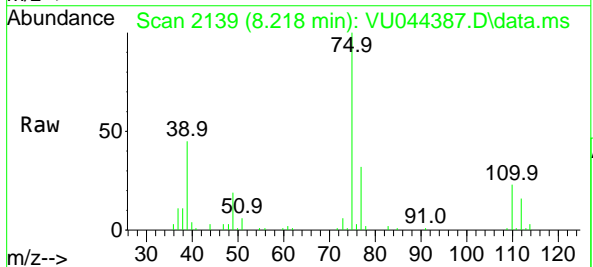
Instrument : MSVOA_U
 ClientSampled :

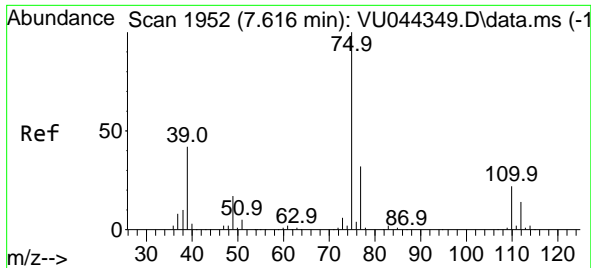
Tgt Ion: 92 Resp: 67991
 Ion Ratio Lower Upper
 92 100
 91 173.8 137.0 205.6



#50
 t-1,3-Dichloropropene
 Concen: 1.854 ug/l
 RT: 8.218 min Scan# 2139
 Delta R.T. -0.003 min
 Lab File: VU044387.D
 Acq: 22 Jul 2021 12:08

Tgt Ion: 75 Resp: 33088
 Ion Ratio Lower Upper
 75 100
 77 31.5 26.2 39.2

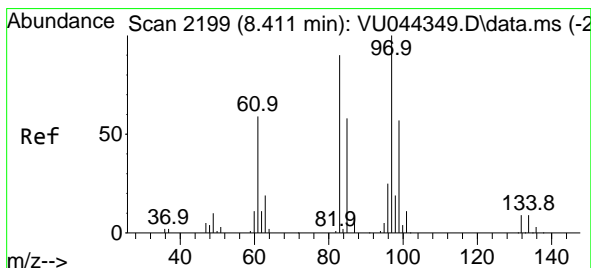
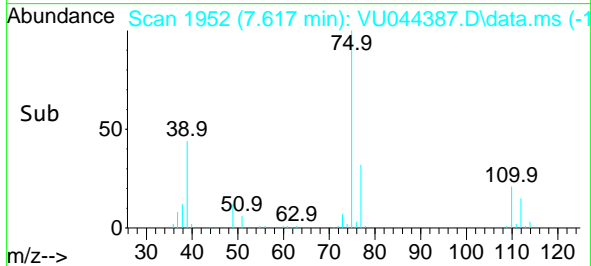
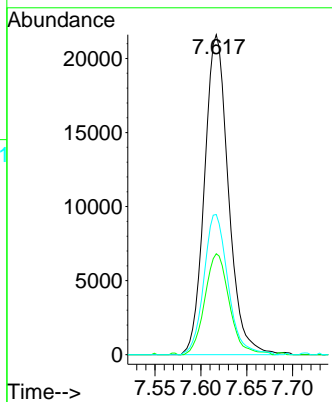
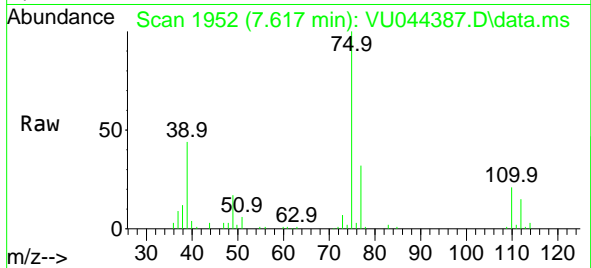




#51
 cis-1,3-Dichloropropene
 Concen: 1.862 ug/l
 RT: 7.617 min Scan# 1952
 Delta R.T. 0.000 min
 Lab File: VU044387.D
 Acq: 22 Jul 2021 12:08

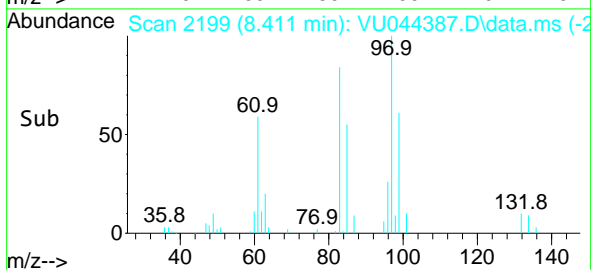
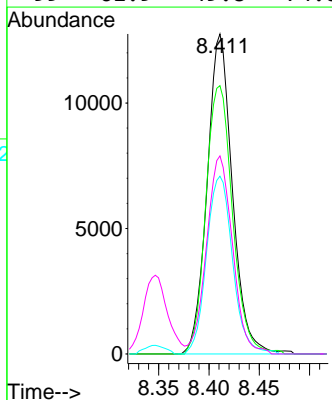
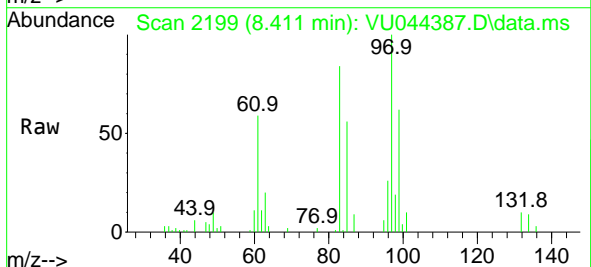
Instrument :
 MSVOA_U
 ClientSampled :

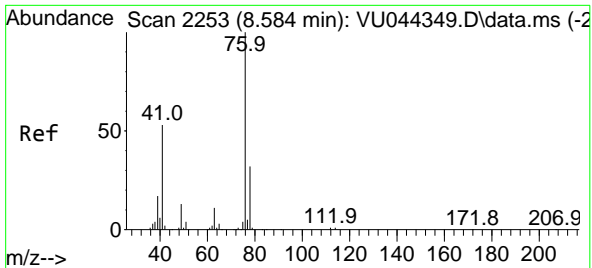
| Tgt Ion | Resp | Lower | Upper |
|---------|-------|-------|-------|
| 75 | 39199 | | |
| 75 | 100 | | |
| 77 | 31.6 | 24.3 | 36.5 |
| 39 | 43.8 | 38.5 | 57.7 |



#52
 1,1,2-Trichloroethane
 Concen: 2.083 ug/l
 RT: 8.411 min Scan# 2199
 Delta R.T. 0.000 min
 Lab File: VU044387.D
 Acq: 22 Jul 2021 12:08

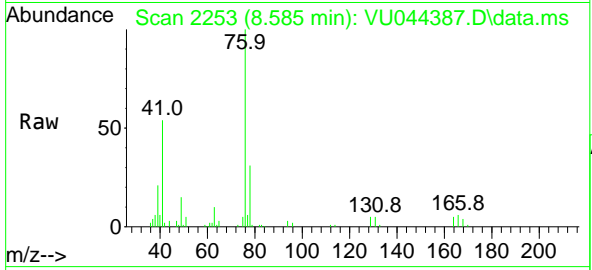
| Tgt Ion | Resp | Lower | Upper |
|---------|-------|-------|-------|
| 97 | 22234 | | |
| 97 | 100 | | |
| 83 | 83.9 | 68.2 | 102.2 |
| 85 | 55.6 | 44.0 | 66.0 |
| 99 | 61.9 | 49.8 | 74.8 |



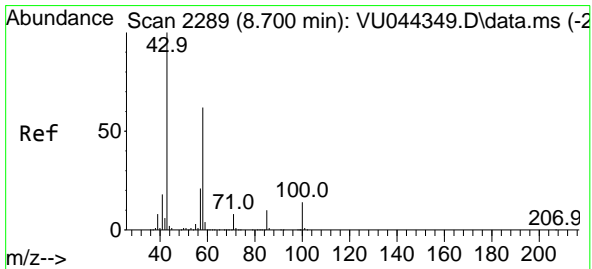
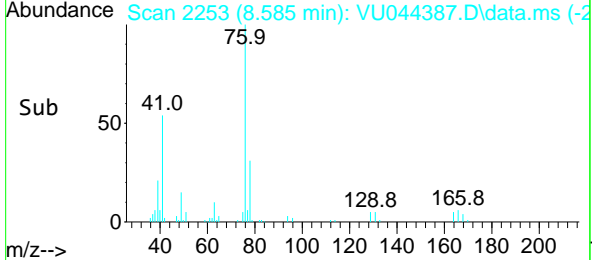
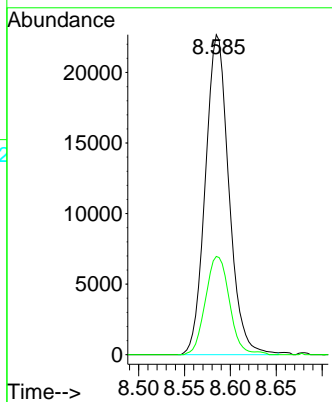


#53
 1,3-Dichloropropane
 Concen: 2.068 ug/l
 RT: 8.585 min Scan# 2253
 Delta R.T. 0.000 min
 Lab File: VU044387.D
 Acq: 22 Jul 2021 12:08

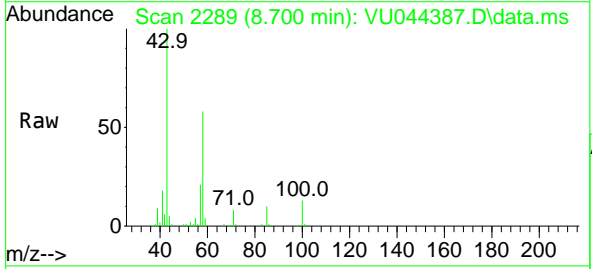
Instrument :
 MSVOA_U
 ClientSampled :



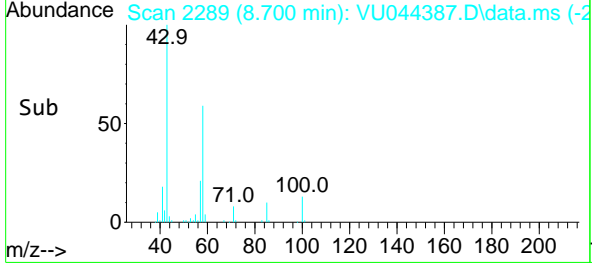
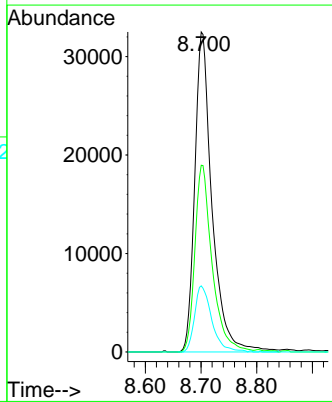
Tgt Ion: 76 Resp: 40535
 Ion Ratio Lower Upper
 76 100
 78 31.4 25.9 38.9

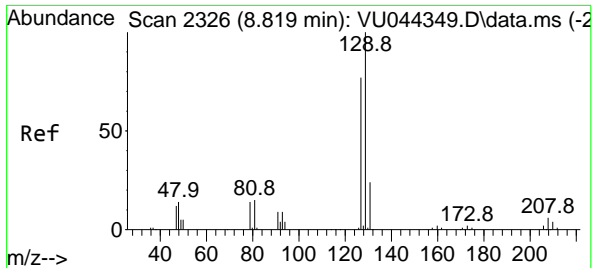


#54
 2-Hexanone
 Concen: 10.015 ug/l
 RT: 8.700 min Scan# 2289
 Delta R.T. 0.000 min
 Lab File: VU044387.D
 Acq: 22 Jul 2021 12:08



Tgt Ion: 43 Resp: 70107
 Ion Ratio Lower Upper
 43 100
 58 58.3 34.4 74.4
 57 20.5 0.0 39.5

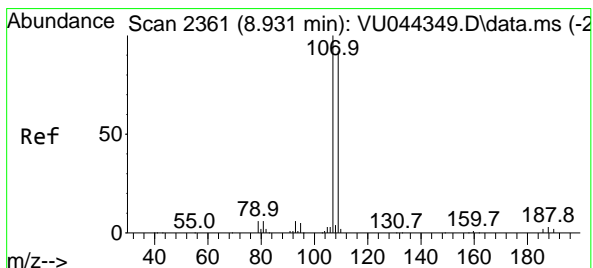
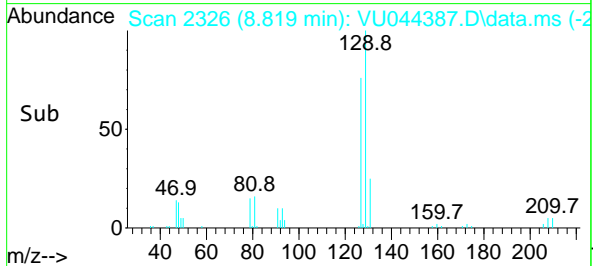
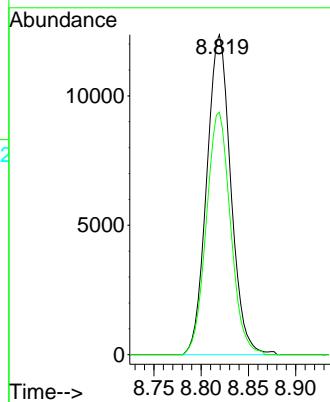
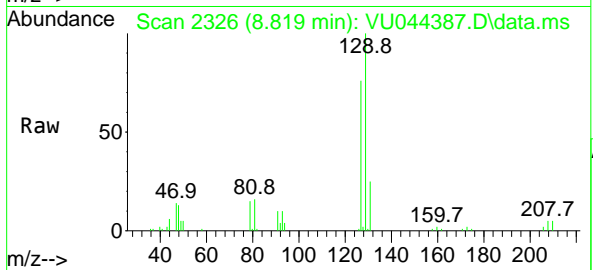




#55
 Dibromochloromethane
 Concen: 1.900 ug/l
 RT: 8.819 min Scan# 2326
 Delta R.T. 0.000 min
 Lab File: VU044387.D
 Acq: 22 Jul 2021 12:08

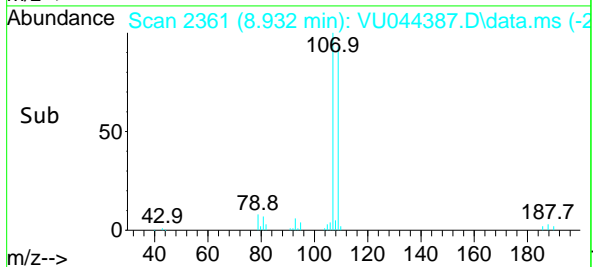
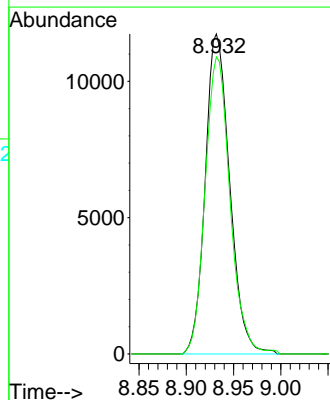
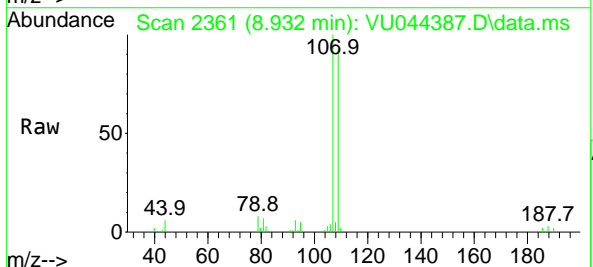
Instrument :
 MSVOA_U
 ClientSampled :

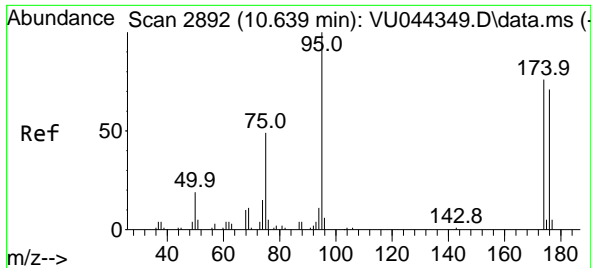
Tgt Ion:129 Resp: 21952
 Ion Ratio Lower Upper
 129 100
 127 76.0 61.8 92.8



#56
 1,2-Dibromoethane
 Concen: 2.030 ug/l
 RT: 8.932 min Scan# 2361
 Delta R.T. 0.000 min
 Lab File: VU044387.D
 Acq: 22 Jul 2021 12:08

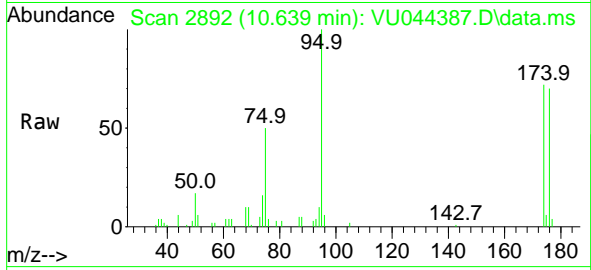
Tgt Ion:107 Resp: 21178
 Ion Ratio Lower Upper
 107 100
 109 94.3 0.0 189.0



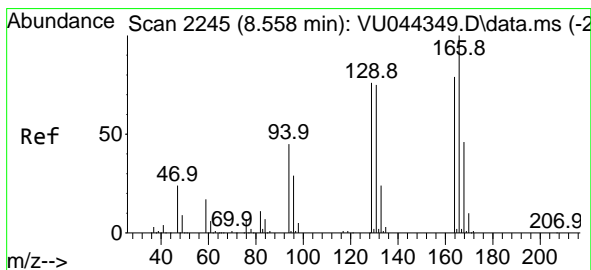
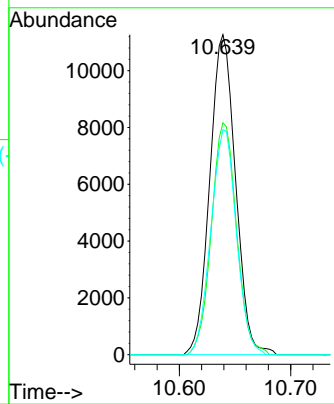
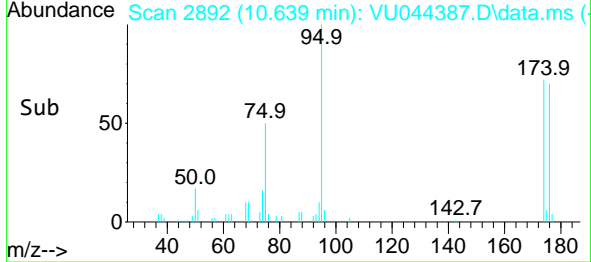


#57
 4-Bromofluorobenzene
 Concen: 0.962 ug/l
 RT: 10.639 min Scan# 2892
 Delta R.T. 0.000 min
 Lab File: VU044387.D
 Acq: 22 Jul 2021 12:08

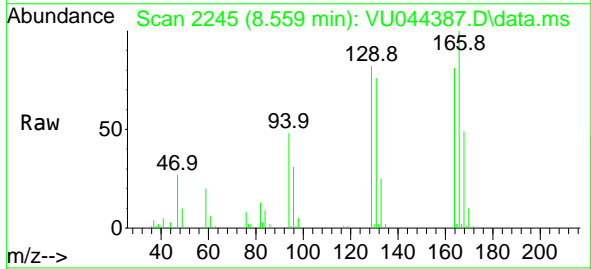
Instrument :
 MSVOA_U
 ClientSampled :



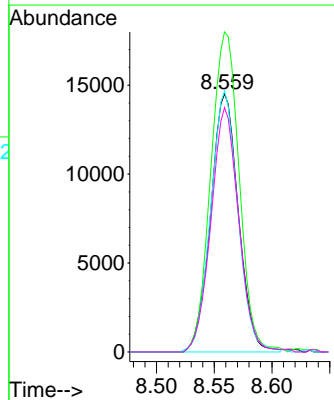
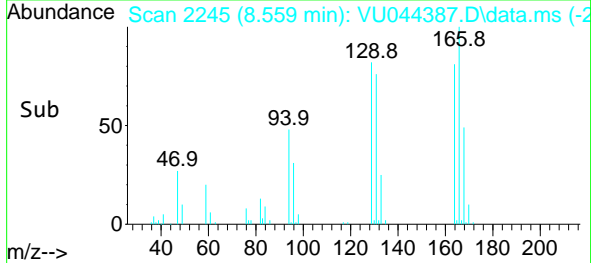
Tgt Ion: 95 Resp: 18110
 Ion Ratio Lower Upper
 95 100
 174 70.8 62.2 93.2
 176 69.6 60.3 90.5

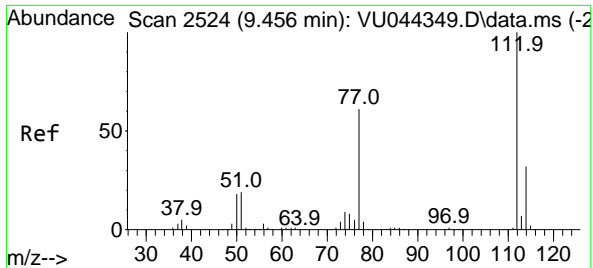


#58
 Tetrachloroethene
 Concen: 2.062 ug/l
 RT: 8.559 min Scan# 2245
 Delta R.T. 0.000 min
 Lab File: VU044387.D
 Acq: 22 Jul 2021 12:08



Tgt Ion: 164 Resp: 24279
 Ion Ratio Lower Upper
 164 100
 166 124.0 100.2 150.4
 129 101.2 76.3 114.5
 131 94.7 73.8 110.8

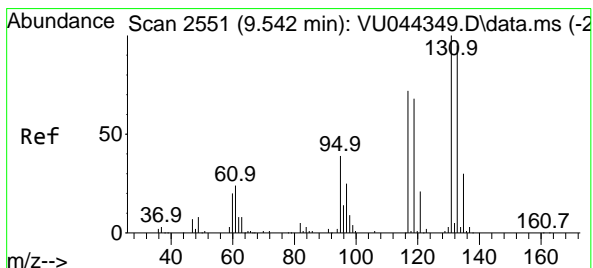
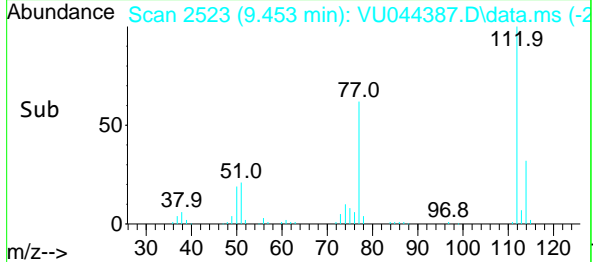
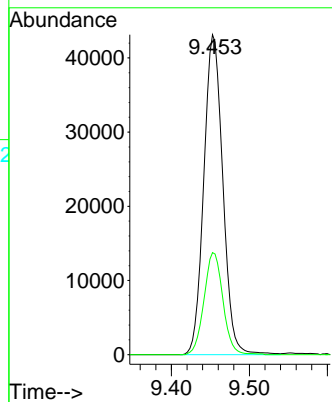
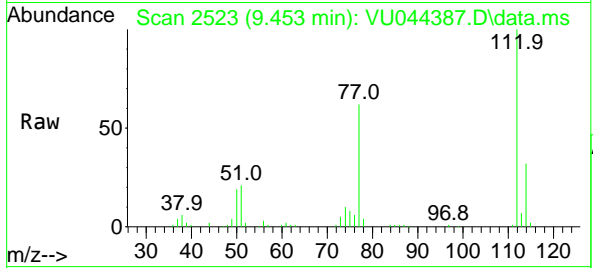




#59
 Chlorobenzene
 Concen: 1.993 ug/l
 RT: 9.453 min Scan# 2523
 Delta R.T. -0.003 min
 Lab File: VU044387.D
 Acq: 22 Jul 2021 12:08

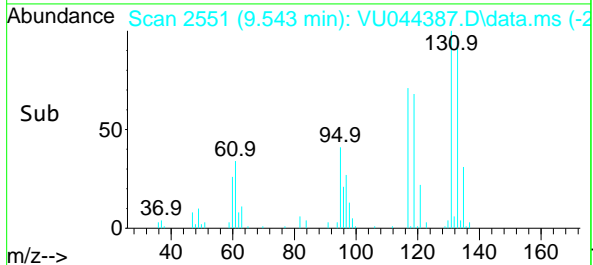
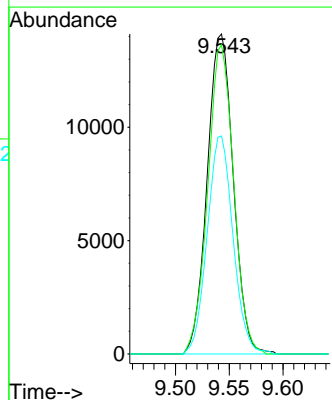
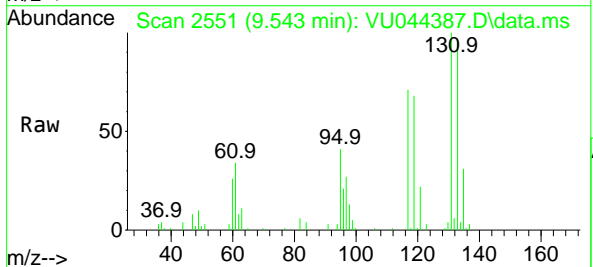
Instrument :
 MSVOA_U
 ClientSampled :

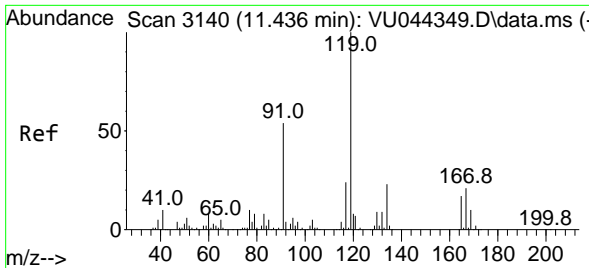
Tgt Ion:112 Resp: 73138
 Ion Ratio Lower Upper
 112 100
 114 31.9 25.0 37.6



#60
 1,1,1,2-Tetrachloroethane
 Concen: 1.955 ug/l
 RT: 9.543 min Scan# 2551
 Delta R.T. 0.000 min
 Lab File: VU044387.D
 Acq: 22 Jul 2021 12:08

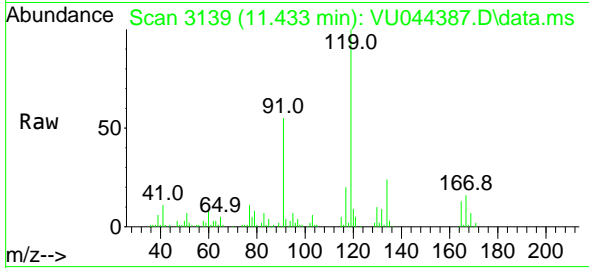
Tgt Ion:131 Resp: 23911
 Ion Ratio Lower Upper
 131 100
 133 95.5 77.3 115.9
 119 67.3 52.8 79.2



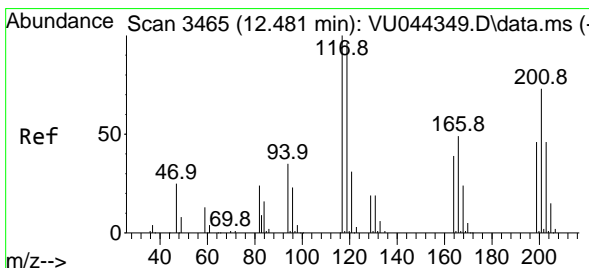
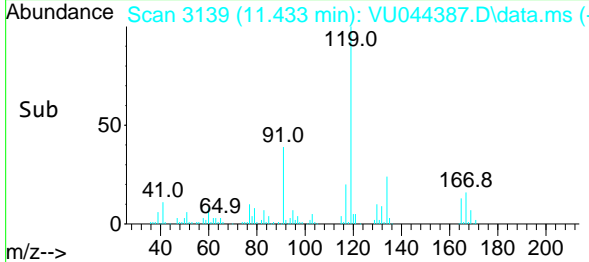
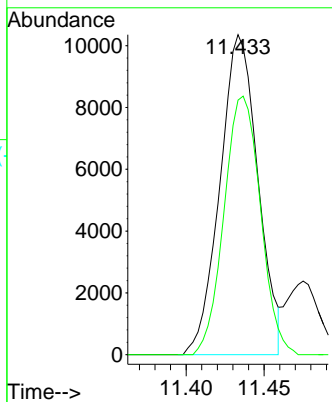


#61
 Pentachloroethane
 Concen: 1.796 ug/l
 RT: 11.433 min Scan# 3139
 Delta R.T. -0.003 min
 Lab File: VU044387.D
 Acq: 22 Jul 2021 12:08

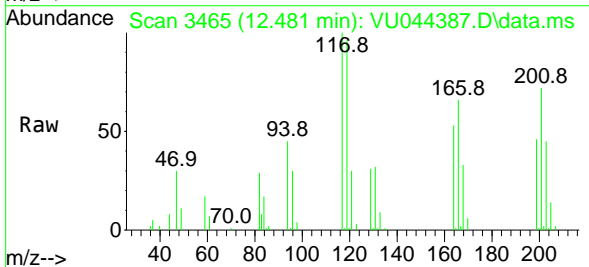
Instrument :
 MSVOA_U
 ClientSampled :



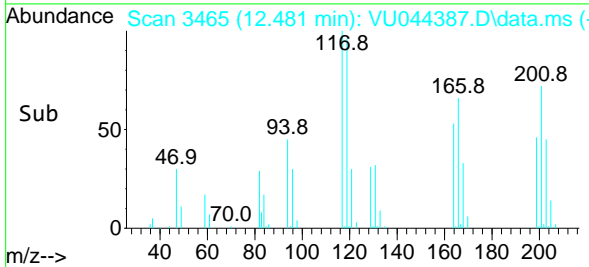
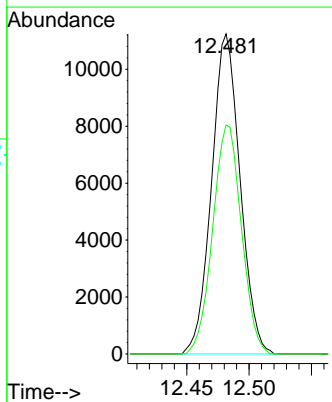
Tgt Ion:117 Resp: 17550
 Ion Ratio Lower Upper
 117 100
 167 77.4 66.7 100.1

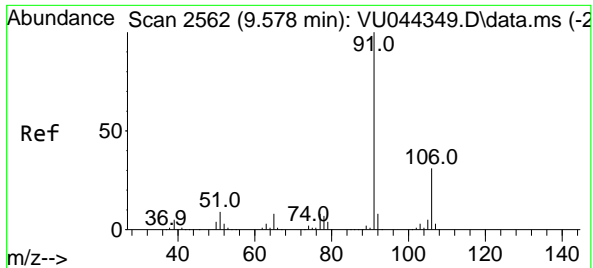


#62
 Hexachloroethane
 Concen: 1.753 ug/l
 RT: 12.481 min Scan# 3465
 Delta R.T. 0.000 min
 Lab File: VU044387.D
 Acq: 22 Jul 2021 12:08



Tgt Ion:117 Resp: 17878
 Ion Ratio Lower Upper
 117 100
 201 72.0 58.0 87.0

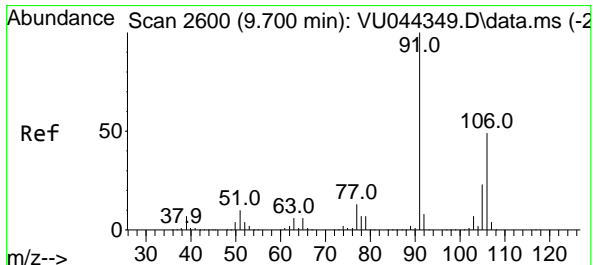
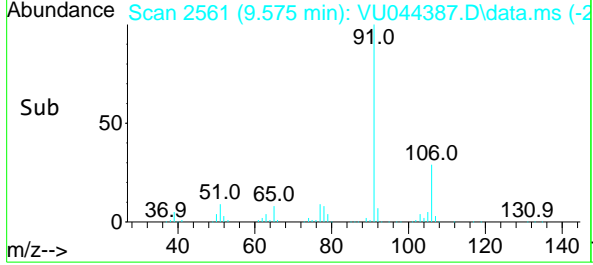
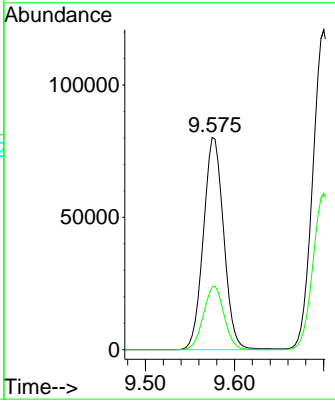
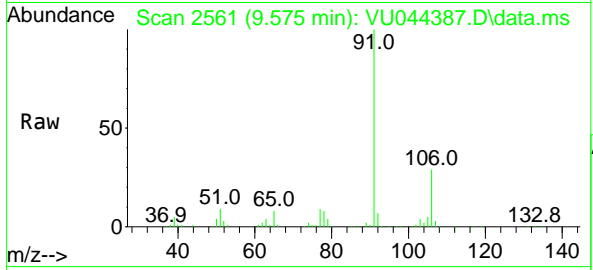




#63
 Ethyl Benzene
 Concen: 1.938 ug/l
 RT: 9.575 min Scan# 2561
 Delta R.T. -0.003 min
 Lab File: VU044387.D
 Acq: 22 Jul 2021 12:08

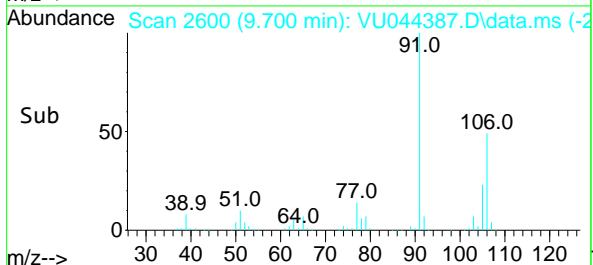
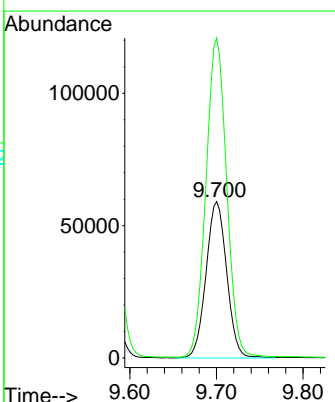
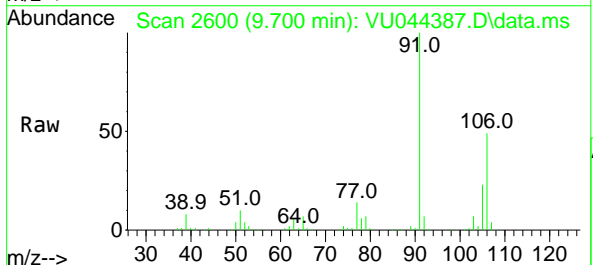
Instrument : MSVOA_U
 ClientSampled :

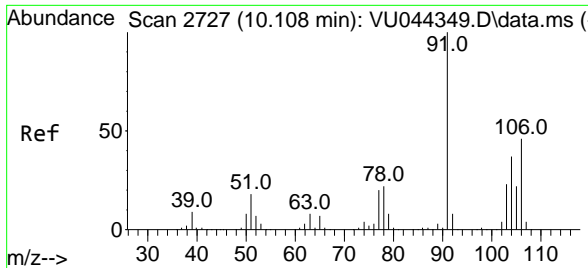
Tgt Ion: 91 Resp: 127102
 Ion Ratio Lower Upper
 91 100
 106 29.5 24.6 37.0



#64
 m/p-Xylenes
 Concen: 3.908 ug/l
 RT: 9.700 min Scan# 2600
 Delta R.T. 0.000 min
 Lab File: VU044387.D
 Acq: 22 Jul 2021 12:08

Tgt Ion:106 Resp: 97952
 Ion Ratio Lower Upper
 106 100
 91 204.7 162.5 243.7

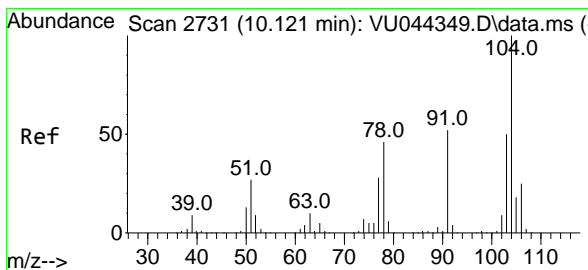
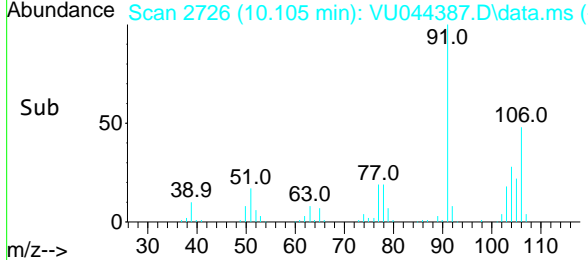
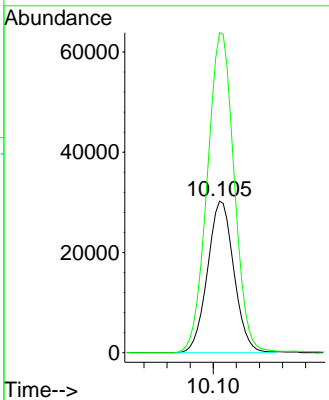
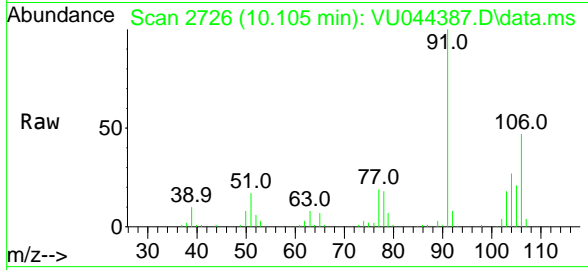




#65
 o-Xylene
 Concen: 1.984 ug/l
 RT: 10.105 min Scan# 2726
 Delta R.T. -0.003 min
 Lab File: VU044387.D
 Acq: 22 Jul 2021 12:08

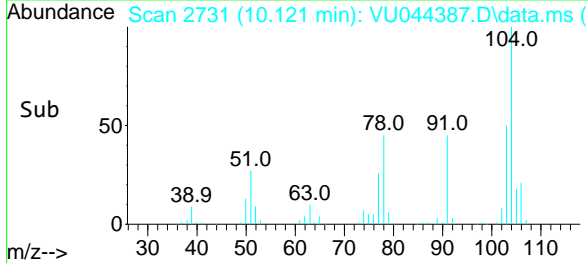
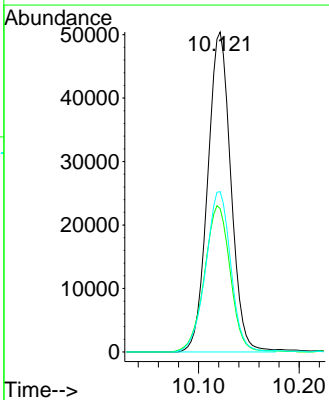
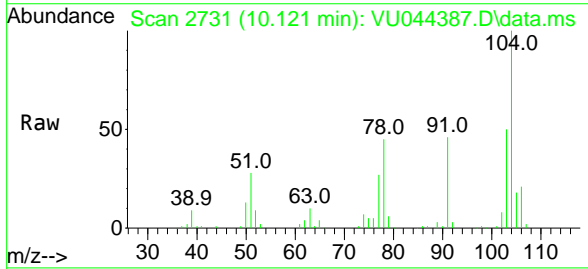
Instrument :
 MSVOA_U
 ClientSampled :

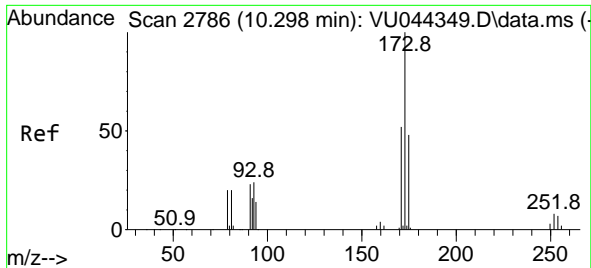
Tgt Ion:106 Resp: 47978
 Ion Ratio Lower Upper
 106 100
 91 215.4 108.2 324.6



#66
 Styrene
 Concen: 1.936 ug/l
 RT: 10.121 min Scan# 2731
 Delta R.T. 0.000 min
 Lab File: VU044387.D
 Acq: 22 Jul 2021 12:08

Tgt Ion:104 Resp: 80689
 Ion Ratio Lower Upper
 104 100
 78 51.0 41.6 62.4
 103 54.2 43.3 64.9

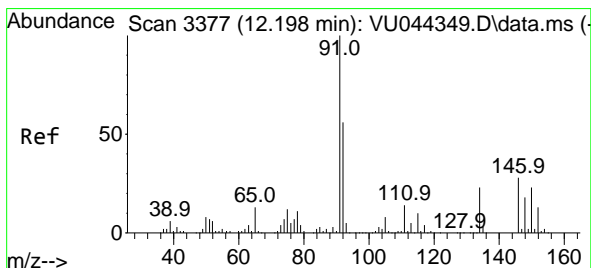
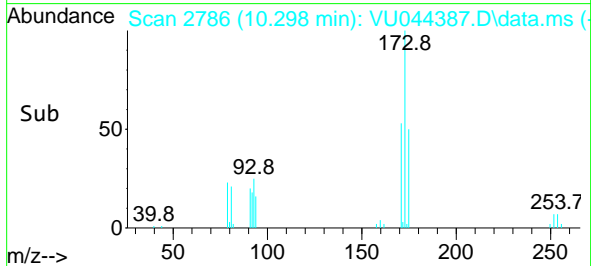
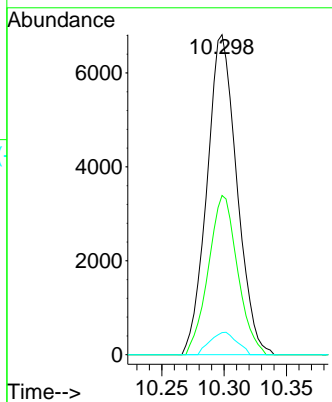
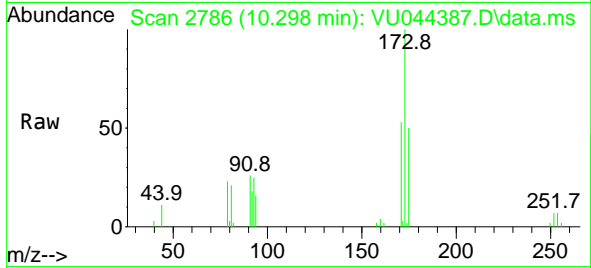




#67
 Bromoform
 Concen: 1.757 ug/l
 RT: 10.298 min Scan# 2786
 Delta R.T. 0.000 min
 Lab File: VU044387.D
 Acq: 22 Jul 2021 12:08

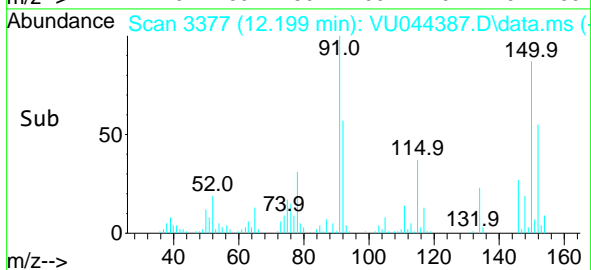
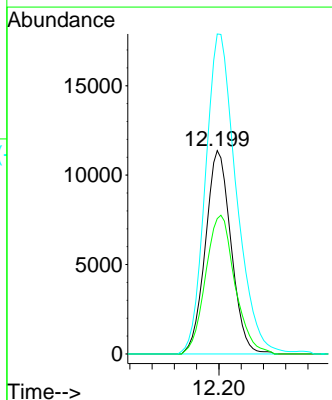
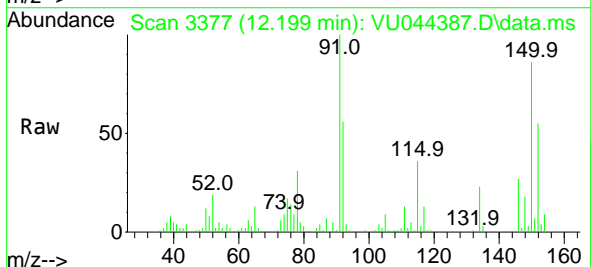
Instrument :
 MSVOA_U
 ClientSampled :

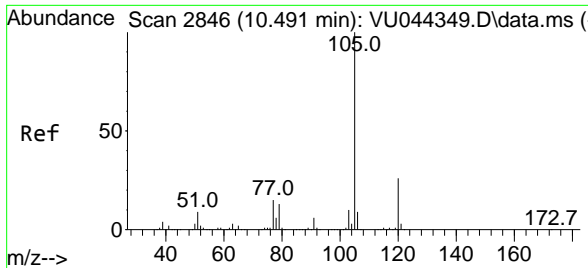
| Tgt Ion | Resp | Lower | Upper |
|---------|-------|-------|-------|
| 173 | 11361 | | |
| 175 | 48.7 | 38.3 | 57.5 |
| 254 | 6.3 | 5.8 | 8.6 |



#68
 1,2-Dichlorobenzene-d4
 Concen: 0.989 ug/l
 RT: 12.199 min Scan# 3377
 Delta R.T. 0.000 min
 Lab File: VU044387.D
 Acq: 22 Jul 2021 12:08

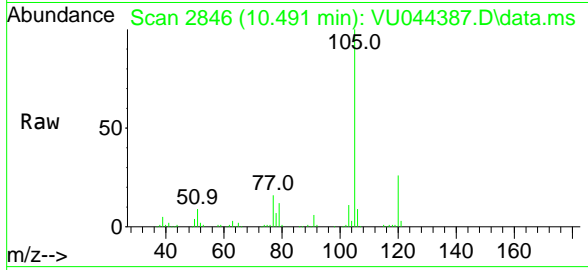
| Tgt Ion | Resp | Lower | Upper |
|---------|-------|-------|-------|
| 152 | 18164 | | |
| 115 | 78.2 | 0.0 | 257.0 |
| 150 | 189.4 | 0.0 | 630.2 |



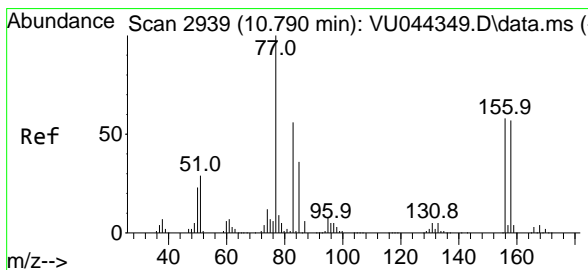
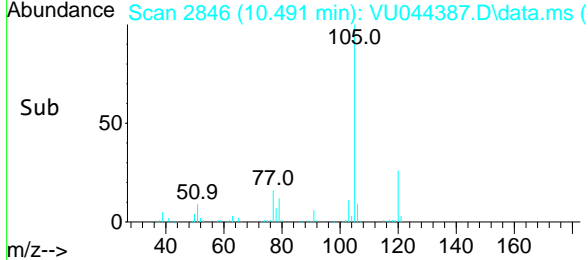
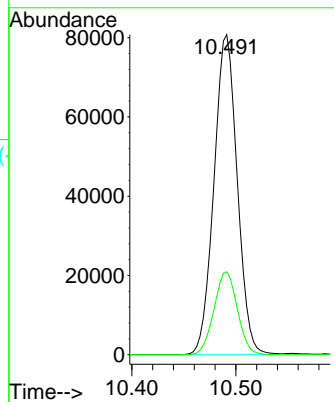


#69
 Isopropylbenzene
 Concen: 1.943 ug/l
 RT: 10.491 min Scan# 2846
 Delta R.T. 0.000 min
 Lab File: VU044387.D
 Acq: 22 Jul 2021 12:08

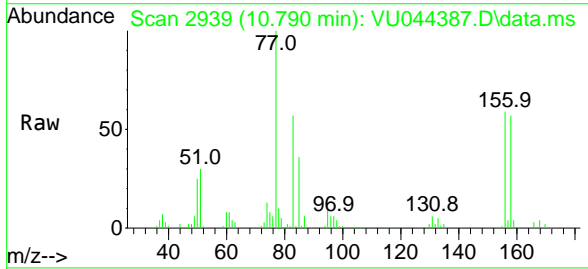
Instrument :
 MSVOA_U
 ClientSampled :



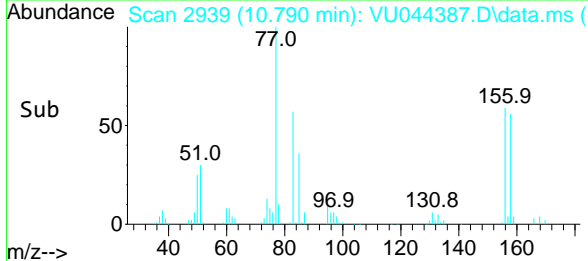
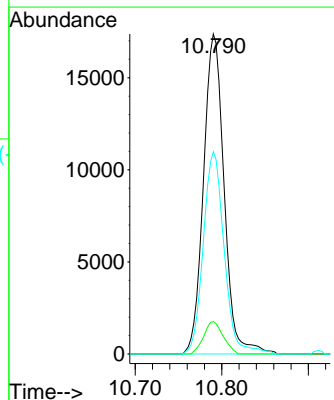
Tgt Ion:105 Resp: 125735
 Ion Ratio Lower Upper
 105 100
 120 25.9 13.1 39.3

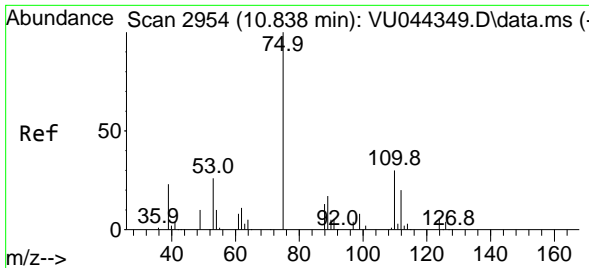


#70
 1,1,2,2-Tetrachloroethane
 Concen: 2.043 ug/l
 RT: 10.790 min Scan# 2939
 Delta R.T. 0.000 min
 Lab File: VU044387.D
 Acq: 22 Jul 2021 12:08



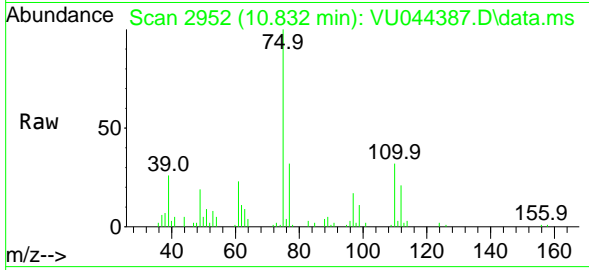
Tgt Ion: 83 Resp: 28772
 Ion Ratio Lower Upper
 83 100
 131 9.5 8.2 12.2
 85 64.2 50.8 76.2





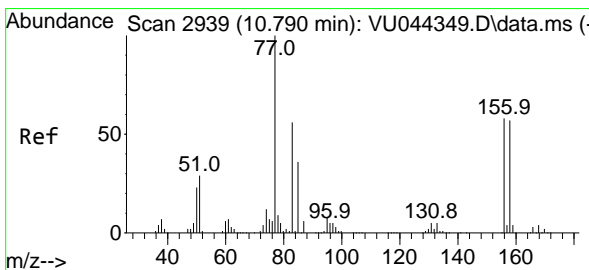
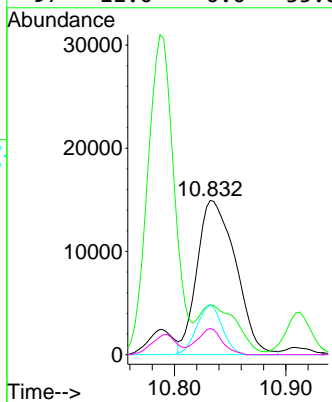
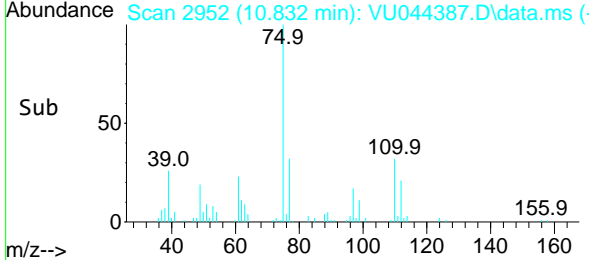
#71
 1,2,3-Trichloropropane
 Concen: 2.980 ug/l
 RT: 10.832 min Scan# 2952
 Delta R.T. -0.006 min
 Lab File: VU044387.D
 Acq: 22 Jul 2021 12:08

Instrument :
 MSVOA_U
 ClientSampled :

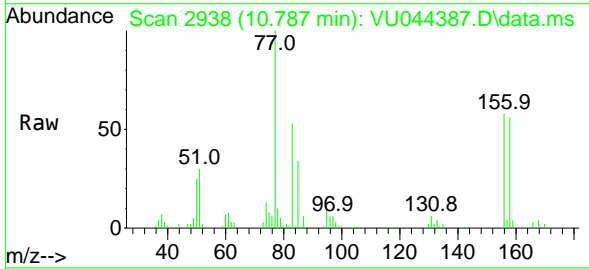


Tgt Ion: 75 Resp: 35981

| Ion | Ratio | Lower | Upper |
|-----|-------|-------|-------|
| 75 | 100 | | |
| 77 | 29.5 | 0.0 | 111.4 |
| 110 | 21.3 | 0.0 | 74.6 |
| 97 | 11.0 | 0.0 | 35.8 |

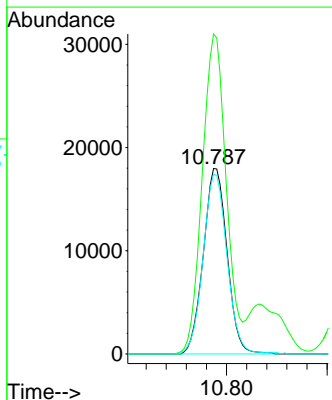
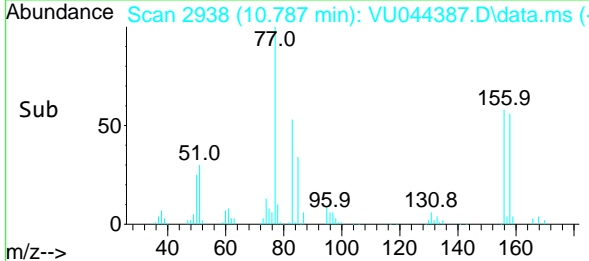


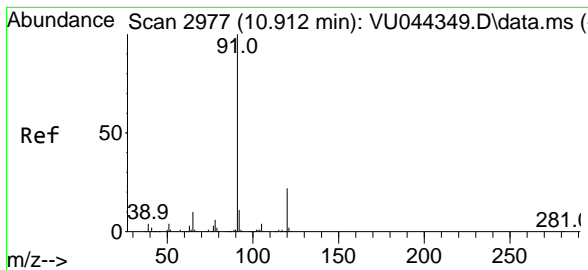
#72
 Bromobenzene
 Concen: 1.967 ug/l
 RT: 10.787 min Scan# 2938
 Delta R.T. -0.003 min
 Lab File: VU044387.D
 Acq: 22 Jul 2021 12:08



Tgt Ion: 156 Resp: 29469

| Ion | Ratio | Lower | Upper |
|-----|-------|-------|-------|
| 156 | 100 | | |
| 77 | 174.0 | 0.0 | 324.2 |
| 158 | 97.5 | 0.0 | 192.4 |

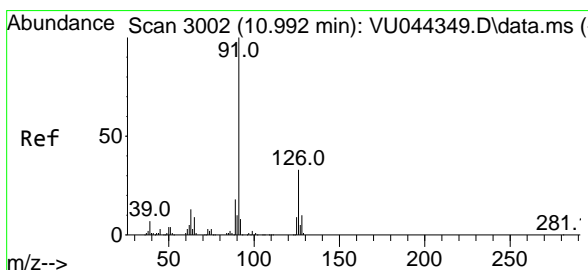
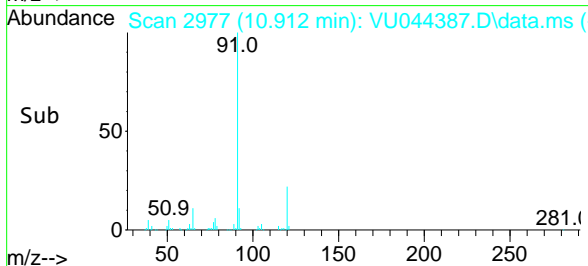
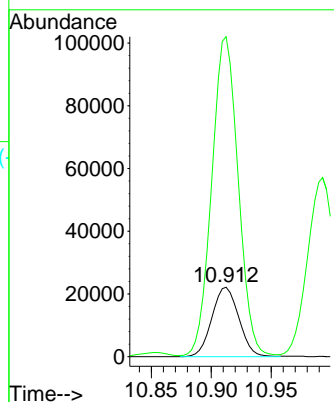
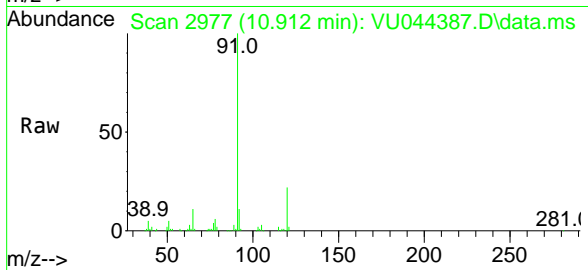




#73
 n-propylbenzene
 Concen: 1.981 ug/l
 RT: 10.912 min Scan# 2977
 Delta R.T. 0.000 min
 Lab File: VU044387.D
 Acq: 22 Jul 2021 12:08

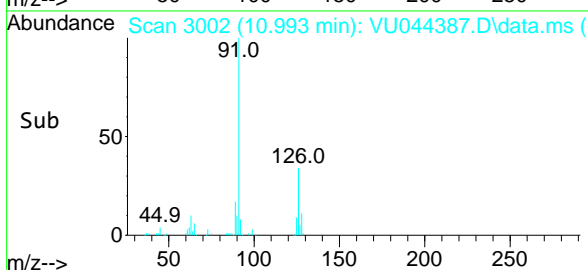
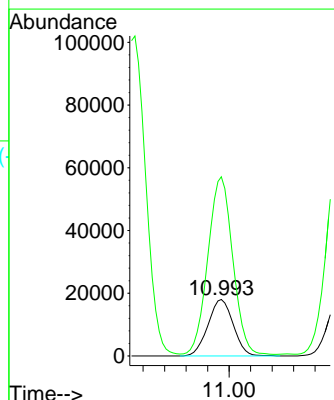
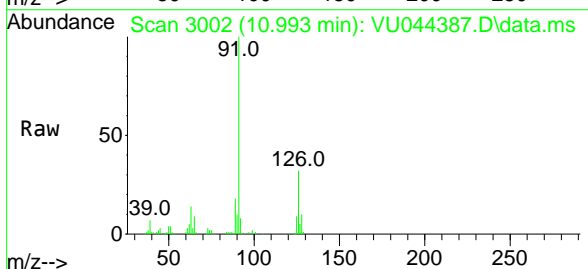
Instrument :
 MSVOA_U
 ClientSampled :

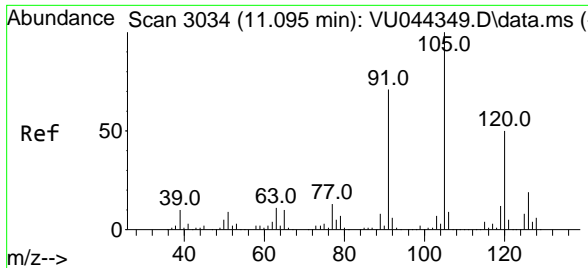
Tgt Ion:120 Resp: 34543
 Ion Ratio Lower Upper
 120 100
 91 449.2 346.6 519.8



#74
 2-Chlorotoluene
 Concen: 1.963 ug/l
 RT: 10.993 min Scan# 3002
 Delta R.T. 0.000 min
 Lab File: VU044387.D
 Acq: 22 Jul 2021 12:08

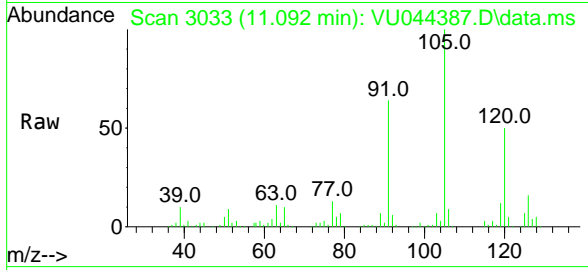
Tgt Ion:126 Resp: 29366
 Ion Ratio Lower Upper
 126 100
 91 309.0 0.0 593.2



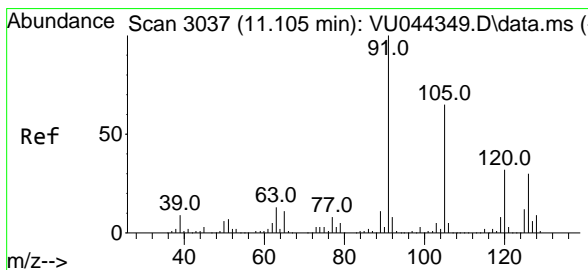
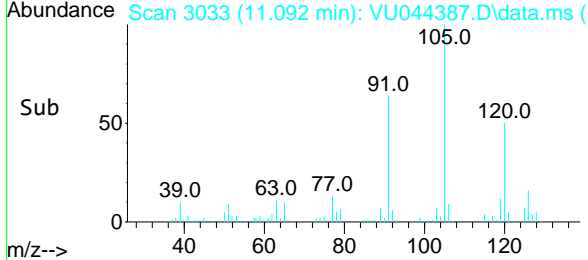
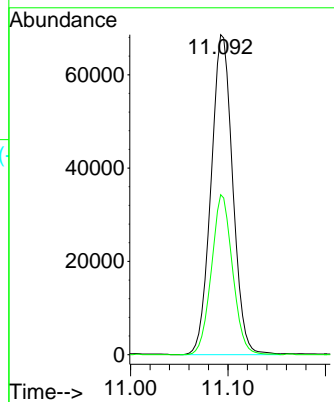


#75
 1,3,5-Trimethylbenzene
 Concen: 1.937 ug/l
 RT: 11.092 min Scan# 3033
 Delta R.T. -0.003 min
 Lab File: VU044387.D
 Acq: 22 Jul 2021 12:08

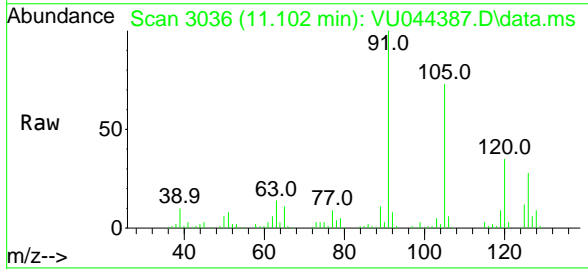
Instrument :
 MSVOA_U
 ClientSampled :



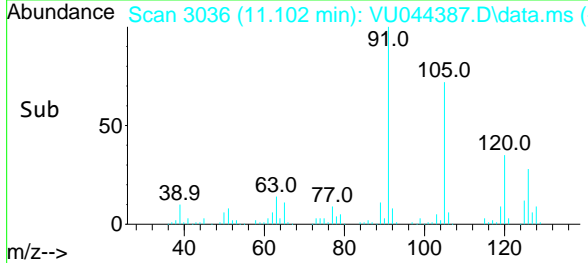
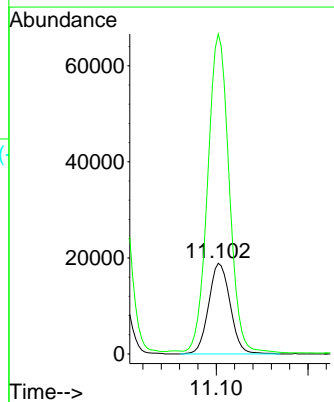
Tgt Ion:105 Resp: 105905
 Ion Ratio Lower Upper
 105 100
 120 48.6 38.6 58.0

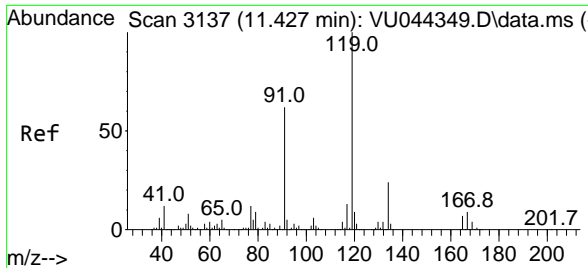


#76
 4-Chlorotoluene
 Concen: 1.980 ug/l
 RT: 11.102 min Scan# 3036
 Delta R.T. -0.003 min
 Lab File: VU044387.D
 Acq: 22 Jul 2021 12:08



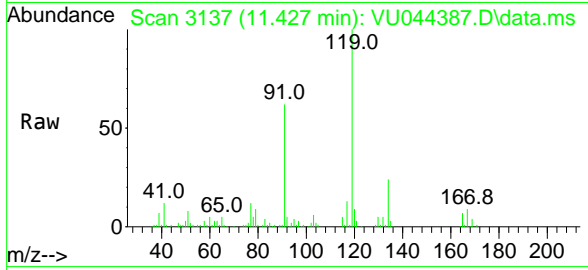
Tgt Ion:126 Resp: 30771
 Ion Ratio Lower Upper
 126 100
 91 351.2 0.0 692.4





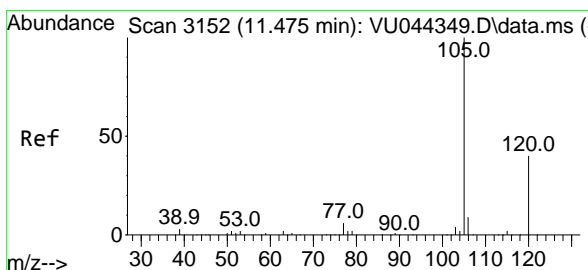
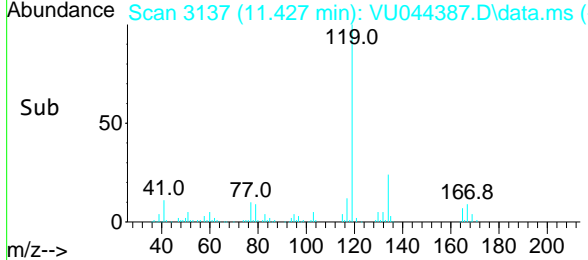
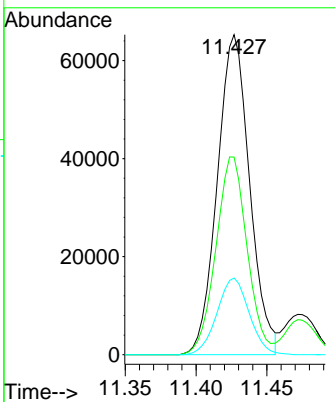
#77
 tert-Butylbenzene
 Concen: 1.937 ug/l
 RT: 11.427 min Scan# 3137
 Delta R.T. 0.000 min
 Lab File: VU044387.D
 Acq: 22 Jul 2021 12:08

Instrument :
 MSVOA_U
 ClientSampled :

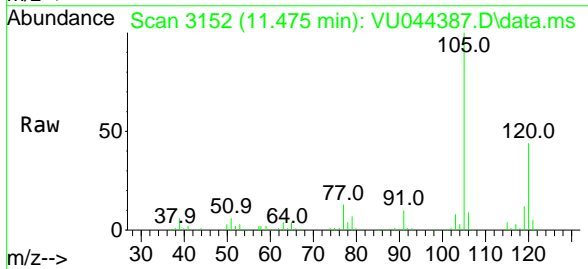


Tgt Ion:119 Resp: 103820

| Ion | Ratio | Lower | Upper |
|-----|-------|-------|-------|
| 119 | 100 | | |
| 91 | 59.6 | 29.9 | 89.7 |
| 134 | 23.7 | 18.7 | 28.1 |

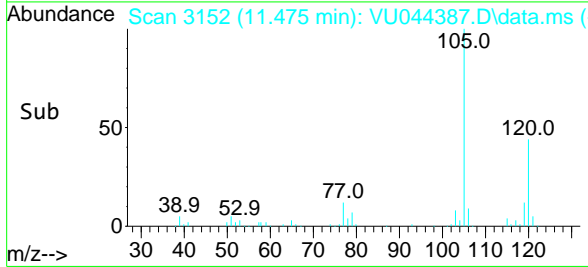
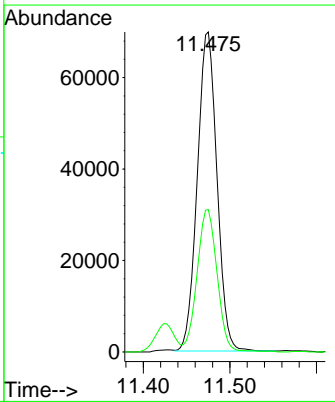


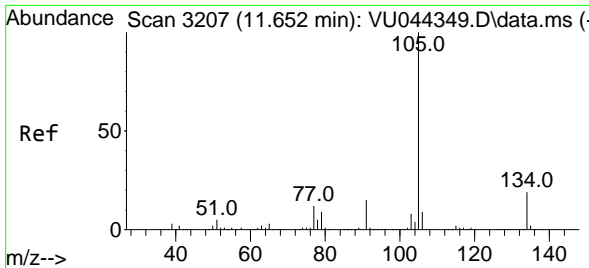
#78
 1,2,4-Trimethylbenzene
 Concen: 1.981 ug/l
 RT: 11.475 min Scan# 3152
 Delta R.T. 0.000 min
 Lab File: VU044387.D
 Acq: 22 Jul 2021 12:08



Tgt Ion:105 Resp: 109969

| Ion | Ratio | Lower | Upper |
|-----|-------|-------|-------|
| 105 | 100 | | |
| 120 | 44.8 | 22.7 | 68.0 |

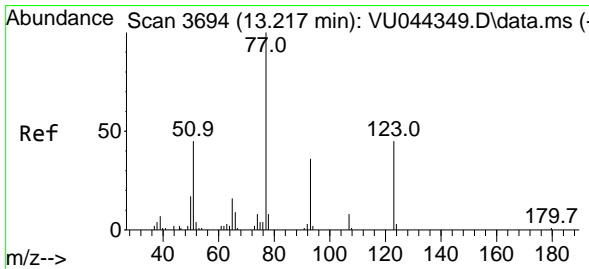
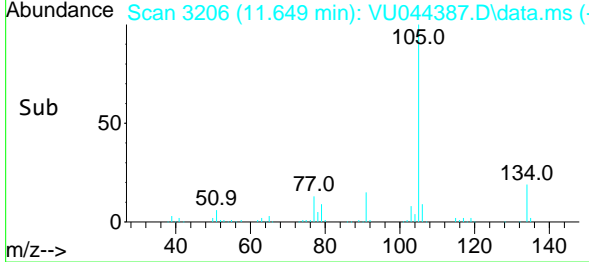
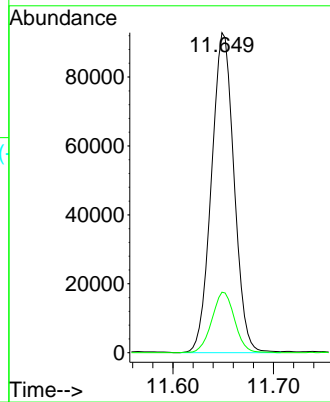
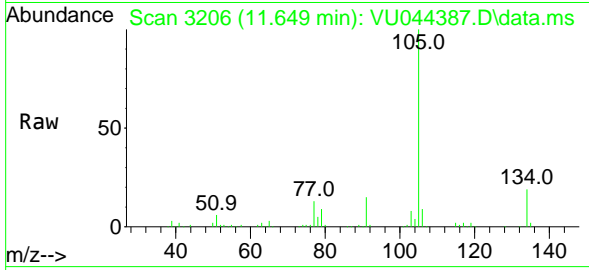




#79
 sec-Butylbenzene
 Concen: 1.987 ug/l
 RT: 11.649 min Scan# 3206
 Delta R.T. -0.003 min
 Lab File: VU044387.D
 Acq: 22 Jul 2021 12:08

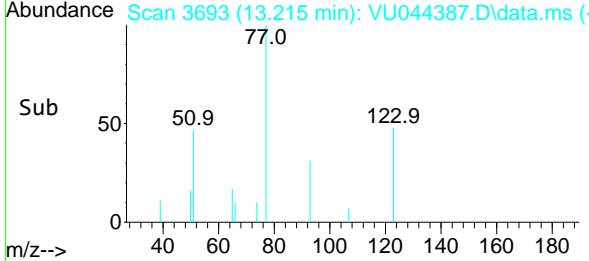
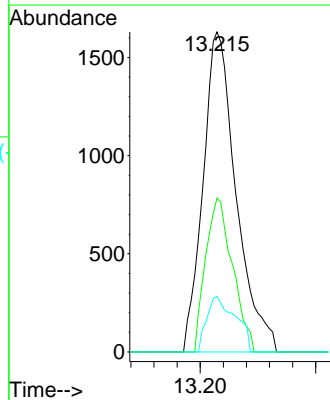
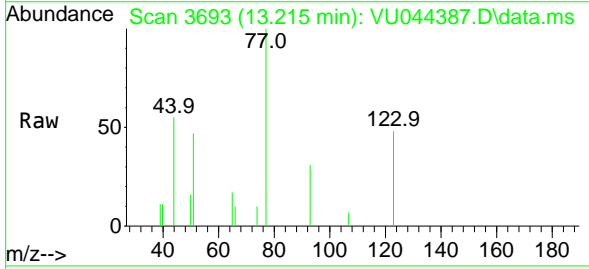
Instrument : MSVOA_U
 ClientSampled :

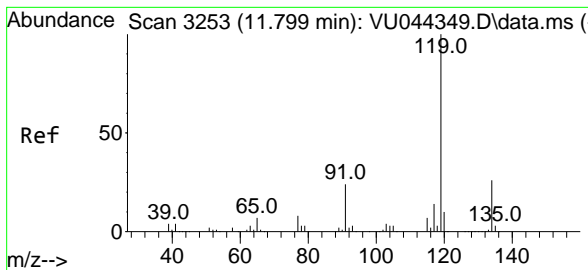
Tgt Ion:105 Resp: 145077
 Ion Ratio Lower Upper
 105 100
 134 19.0 16.1 24.1



#80
 Nitrobenzene
 Concen: 7.706 ug/l
 RT: 13.215 min Scan# 3693
 Delta R.T. -0.003 min
 Lab File: VU044387.D
 Acq: 22 Jul 2021 12:08

Tgt Ion: 77 Resp: 3238
 Ion Ratio Lower Upper
 77 100
 123 39.1 19.0 67.4
 65 15.0 12.2 15.6

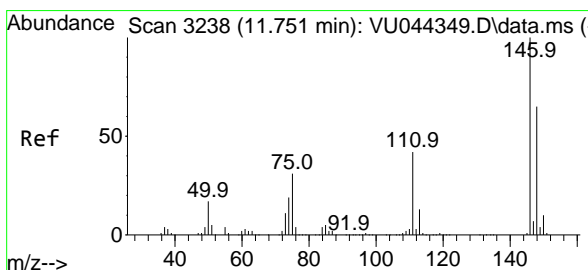
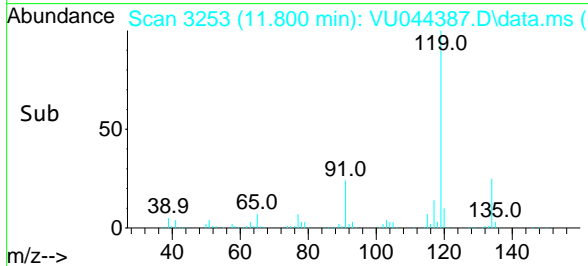
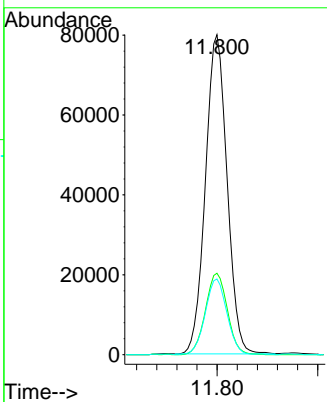
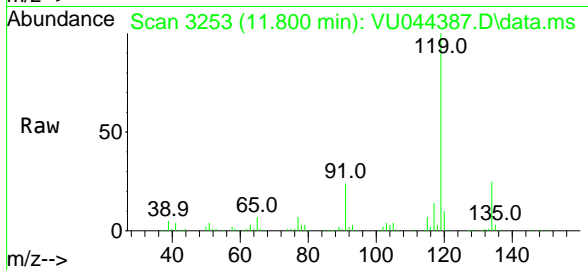




#81
 p-Isopropyltoluene
 Concen: 1.974 ug/l
 RT: 11.800 min Scan# 3253
 Delta R.T. 0.000 min
 Lab File: VU044387.D
 Acq: 22 Jul 2021 12:08

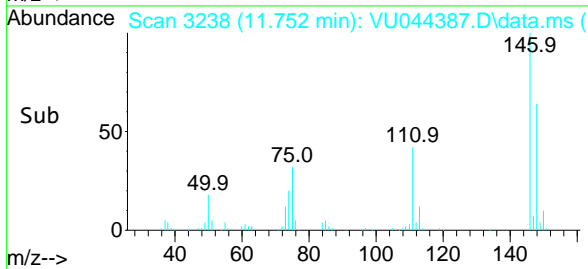
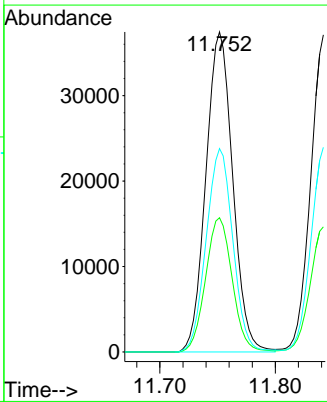
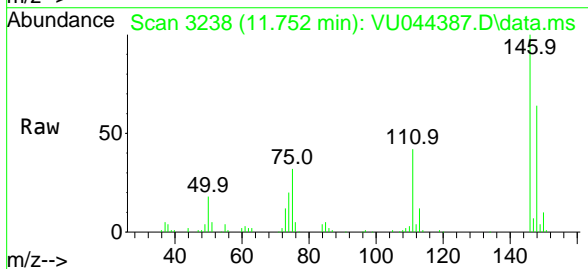
Instrument :
 MSVOA_U
 ClientSampled :

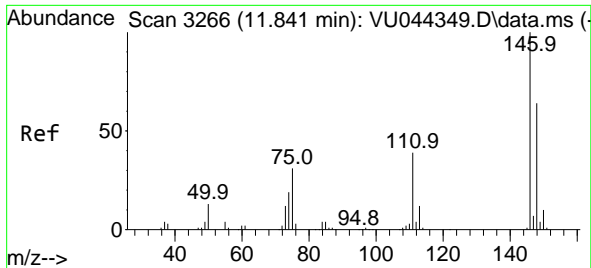
| Tgt Ion | Resp | Lower | Upper |
|---------|------|-------|-------|
| 119 | 100 | | |
| 134 | 25.9 | 21.0 | 31.4 |
| 91 | 24.0 | 19.4 | 29.2 |



#82
 1,3-Dichlorobenzene
 Concen: 2.031 ug/l
 RT: 11.752 min Scan# 3238
 Delta R.T. 0.000 min
 Lab File: VU044387.D
 Acq: 22 Jul 2021 12:08

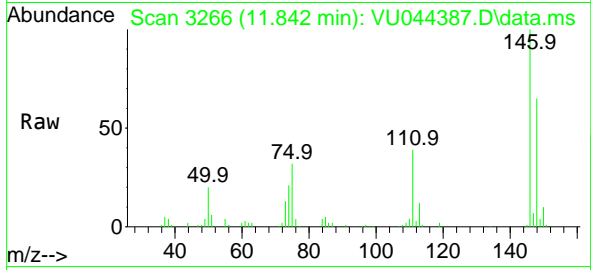
| Tgt Ion | Resp | Lower | Upper |
|---------|------|-------|-------|
| 146 | 100 | | |
| 111 | 41.7 | 33.3 | 49.9 |
| 148 | 63.3 | 50.9 | 76.3 |



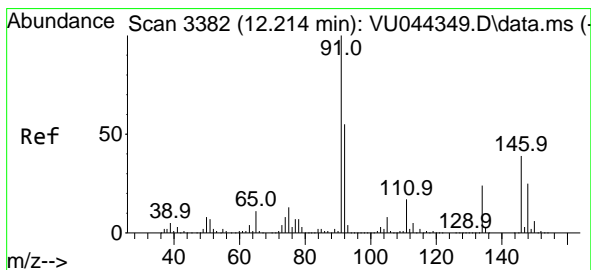
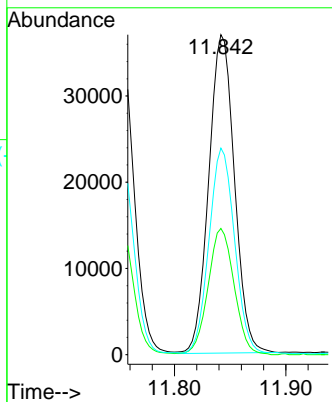
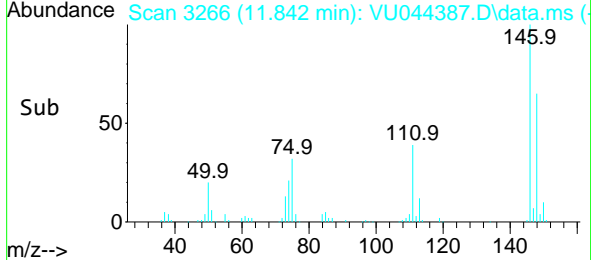


#83
 1,4-Dichlorobenzene
 Concen: 1.971 ug/l
 RT: 11.842 min Scan# 3266
 Delta R.T. 0.000 min
 Lab File: VU044387.D
 Acq: 22 Jul 2021 12:08

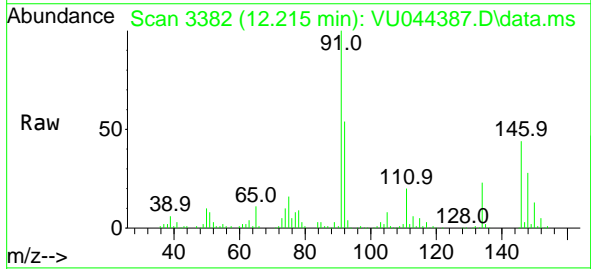
Instrument :
 MSVOA_U
 ClientSampled :



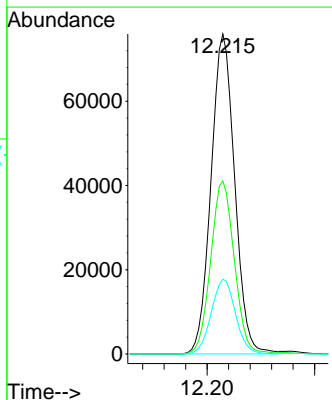
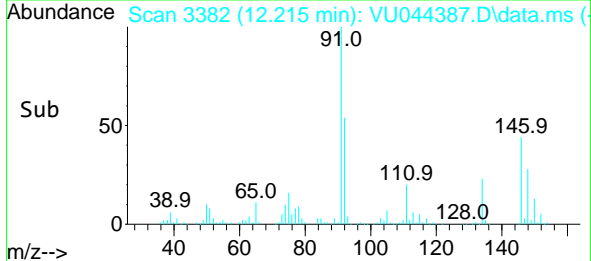
Tgt Ion:146 Resp: 59224
 Ion Ratio Lower Upper
 146 100
 111 40.3 32.6 48.8
 148 64.7 50.8 76.2

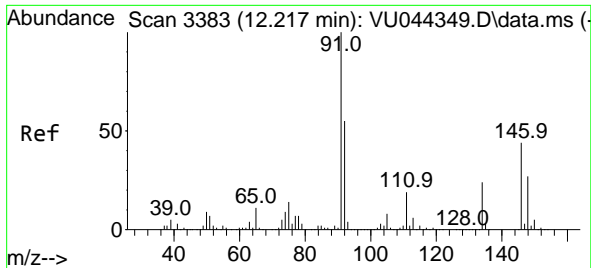


#84
 n-Butylbenzene
 Concen: 1.959 ug/l
 RT: 12.215 min Scan# 3382
 Delta R.T. 0.000 min
 Lab File: VU044387.D
 Acq: 22 Jul 2021 12:08



Tgt Ion: 91 Resp: 115952
 Ion Ratio Lower Upper
 91 100
 92 53.9 43.3 64.9
 134 23.9 20.2 30.4

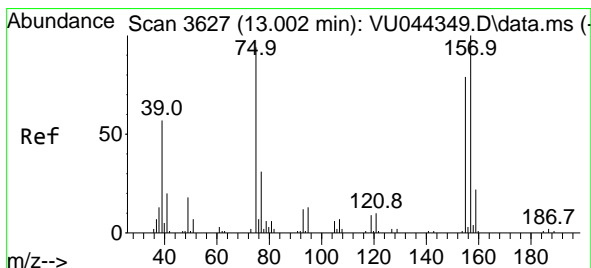
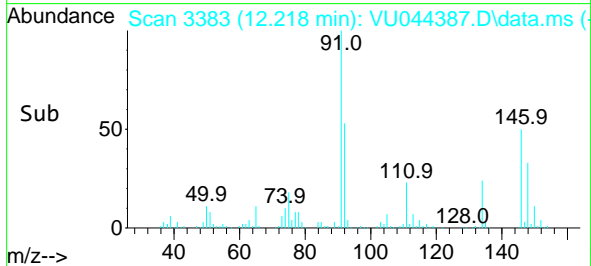
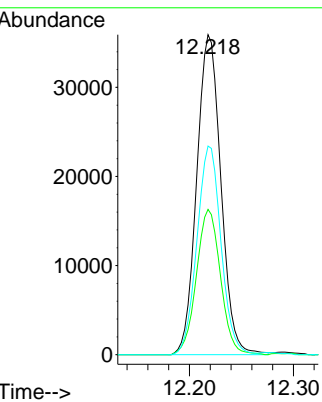
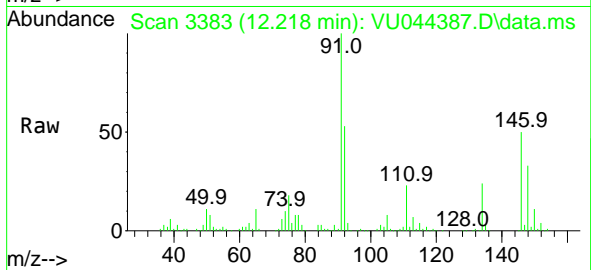




#85
 1,2-Dichlorobenzene
 Concen: 2.014 ug/l
 RT: 12.218 min Scan# 3383
 Delta R.T. 0.000 min
 Lab File: VU044387.D
 Acq: 22 Jul 2021 12:08

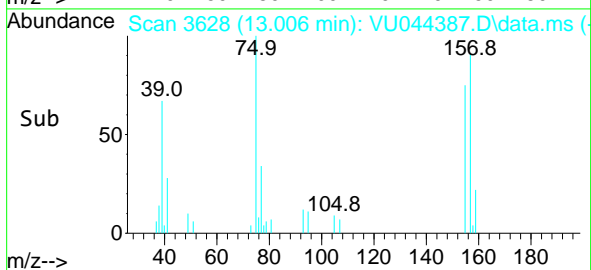
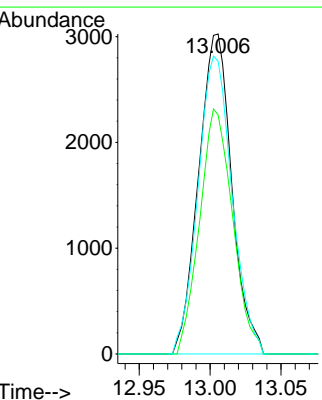
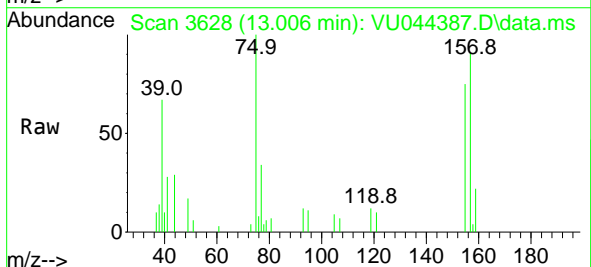
Instrument :
 MSVOA_U
 ClientSampled :

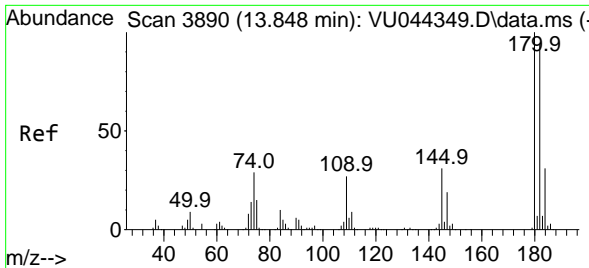
| Tgt Ion | Resp | Lower | Upper |
|---------|-------|-------|-------|
| 146 | 58051 | | |
| 100 | | | |
| 111 | 45.2 | 21.6 | 64.6 |
| 148 | 64.9 | 31.9 | 95.7 |



#86
 1,2-Dibromo-3-Chloropropane
 Concen: 2.026 ug/l
 RT: 13.006 min Scan# 3628
 Delta R.T. 0.004 min
 Lab File: VU044387.D
 Acq: 22 Jul 2021 12:08

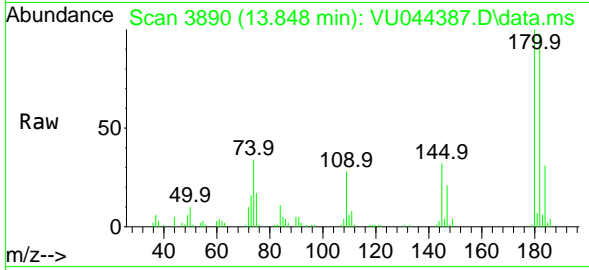
| Tgt Ion | Resp | Lower | Upper |
|---------|------|-------|-------|
| 75 | 4932 | | |
| 100 | | | |
| 155 | 76.0 | 64.7 | 97.1 |
| 157 | 95.6 | 85.3 | 127.9 |



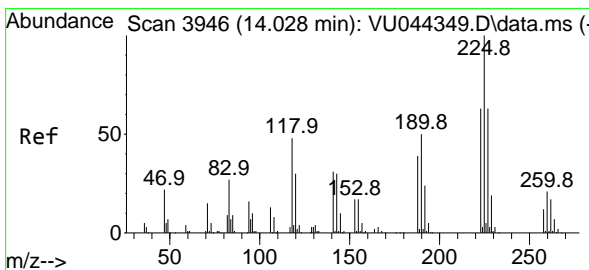
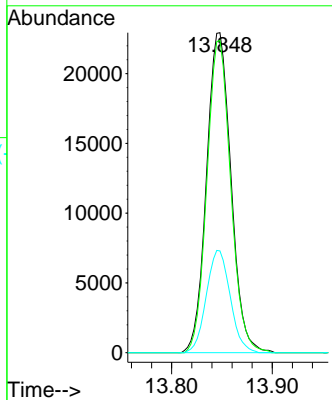
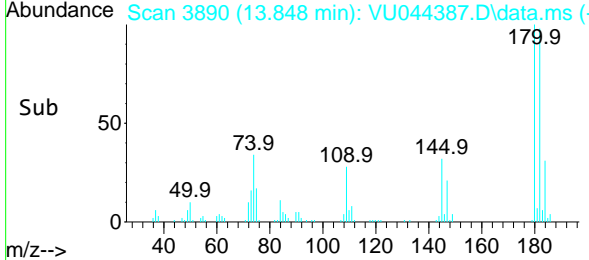


#87
 1,2,4-Trichlorobenzene
 Concen: 1.903 ug/l
 RT: 13.848 min Scan# 3890
 Delta R.T. 0.000 min
 Lab File: VU044387.D
 Acq: 22 Jul 2021 12:08

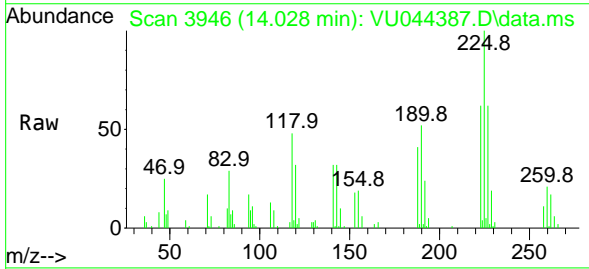
Instrument :
 MSVOA_U
 ClientSampled :



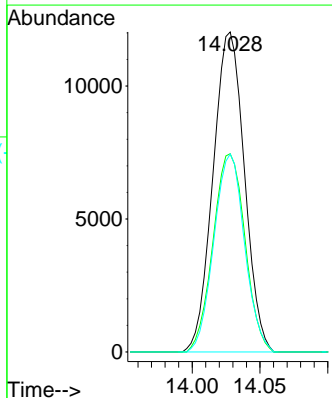
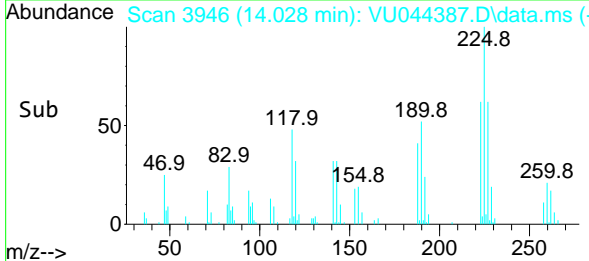
Tgt Ion:180 Resp: 38806
 Ion Ratio Lower Upper
 180 100
 182 94.8 77.0 115.6
 145 31.1 25.8 38.6

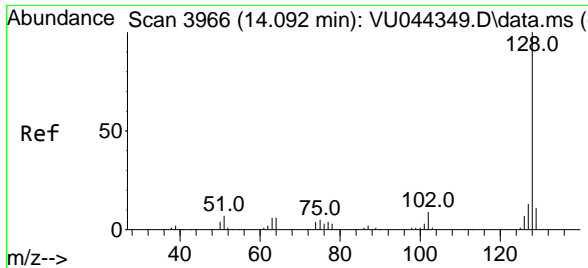


#88
 Hexachlorobutadiene
 Concen: 1.964 ug/l
 RT: 14.028 min Scan# 3946
 Delta R.T. 0.000 min
 Lab File: VU044387.D
 Acq: 22 Jul 2021 12:08



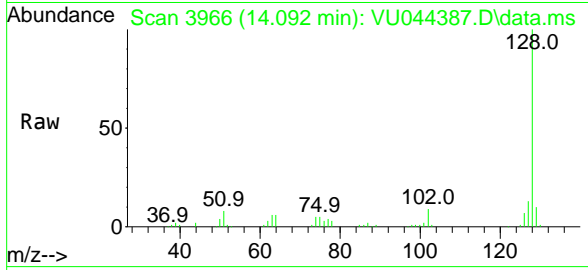
Tgt Ion:225 Resp: 19384
 Ion Ratio Lower Upper
 225 100
 223 63.0 50.9 76.3
 227 60.4 50.8 76.2



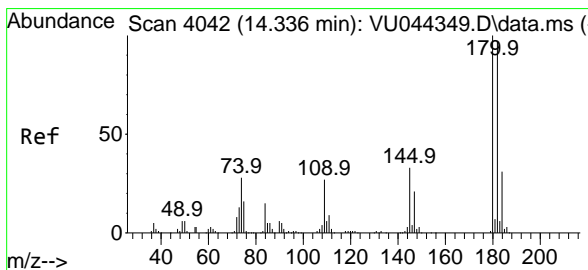
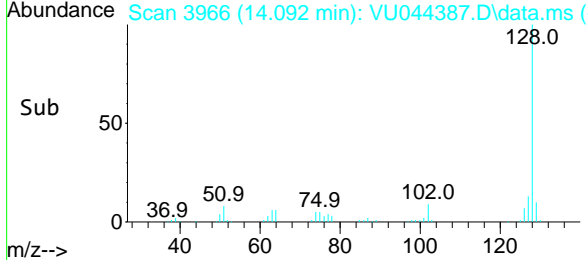
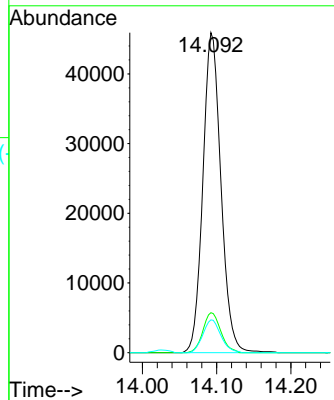


#89
 Naphthalene
 Concen: 1.901 ug/l
 RT: 14.092 min Scan# 3966
 Delta R.T. 0.000 min
 Lab File: VU044387.D
 Acq: 22 Jul 2021 12:08

Instrument :
 MSVOA_U
 ClientSampled :



Tgt Ion:128 Resp: 77531
 Ion Ratio Lower Upper
 128 100
 127 12.4 10.4 15.6
 129 10.3 8.6 13.0



#90
 1,2,3-Trichlorobenzene
 Concen: 1.970 ug/l
 RT: 14.337 min Scan# 4042
 Delta R.T. 0.000 min
 Lab File: VU044387.D
 Acq: 22 Jul 2021 12:08

Tgt Ion:180 Resp: 36482
 Ion Ratio Lower Upper
 180 100
 182 92.7 77.1 115.7
 145 32.7 27.0 40.4

