

Data Path : Z:\voasrv\HPCHEM1\MSVOA\_U\Data\VU072324\  
 Data File : VU060117.D  
 Acq On : 23 Jul 2024 16:10  
 Operator : MD/SY  
 Sample : P3300-01  
 Misc : 25.0mL/MSVOA\_U/WATER  
 ALS Vial : 15 Sample Multiplier: 1

Instrument :  
 MSVOA\_U  
 ClientSampleId :

Quant Time: Jul 24 04:22:43 2024  
 Quant Method : Z:\voasrv\HPCHEM1\MSVOA\_U\Method\SFAMUTR071824WMA.M  
 Quant Title : TRACE VOA SFAM1.0  
 QLast Update : Wed Jul 24 04:18:44 2024  
 Response via : Initial Calibration

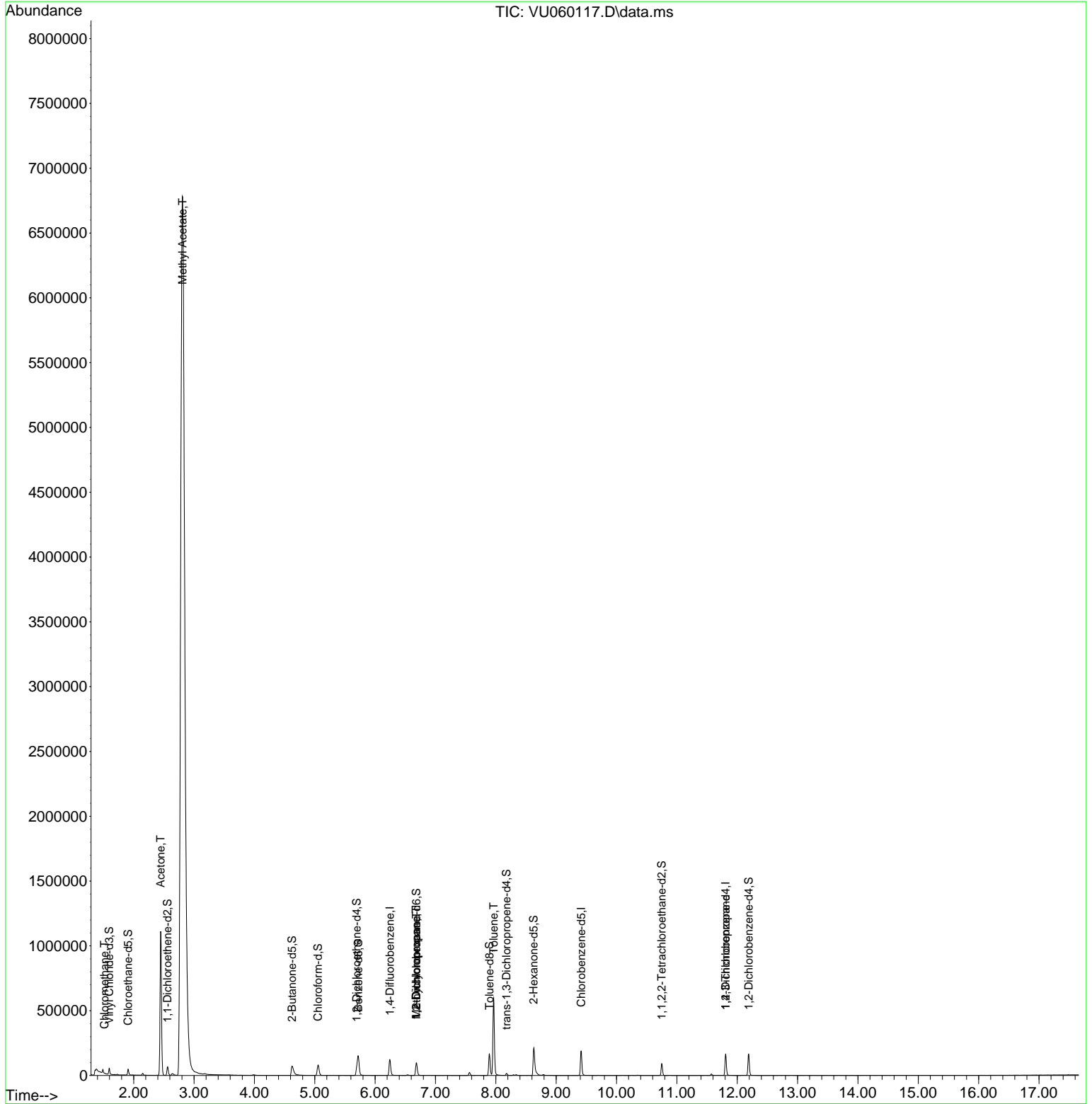
Compound	R.T.	QI on	Response	Conc	Units	Dev(Min)
<b>Internal Standards</b>						
1) 1,4-Difluorobenzene	6.245	114	108768	5.000	ug/L	0.00
28) Chlorobenzene-d5	9.415	117	118847	5.000	ug/L	0.00
58) 1,4-Dichlorobenzene-d4	11.807	152	49115	5.000	ug/L	0.00
<b>System Monitoring Compounds</b>						
4) Vinyl Chloride-d3	1.595	65	33467	4.422	ug/L	0.00
Spike Amount	5.000	Range	40 - 130	Recovery	=	88.400%
7) Chloroethane-d5	1.907	69	34798	4.950	ug/L	0.00
Spike Amount	5.000	Range	65 - 130	Recovery	=	99.000%
11) 1,1-Dichloroethane-d2	2.560	65	13202	4.468	ug/L	0.00
Spike Amount	5.000	Range	60 - 125	Recovery	=	89.400%
20) 2-Butanone-d5	4.624	46	99732	56.369	ug/L	0.00
Spike Amount	50.000	Range	40 - 130	Recovery	=	112.740%
24) Chloroform-d	5.055	84	79206	4.980	ug/L	0.00
Spike Amount	5.000	Range	70 - 125	Recovery	=	99.600%
26) 1,2-Dichloroethane-d4	5.695	65	40384	5.453	ug/L	0.00
Spike Amount	5.000	Range	70 - 130	Recovery	=	109.000%
32) Benzene-d6	5.721	84	152616	4.793	ug/L	0.00
Spike Amount	5.000	Range	70 - 125	Recovery	=	95.800%
36) 1,2-Dichloropropane-d6	6.685	67	51641	5.090	ug/L	0.00
Spike Amount	5.000	Range	60 - 140	Recovery	=	101.800%
41) Toluene-d8	7.894	98	119018	4.137	ug/L	0.00
Spike Amount	5.000	Range	70 - 130	Recovery	=	82.800%
43) trans-1,3-Dichloropropene	8.177	79	9832	2.847	ug/L	0.00
Spike Amount	5.000	Range	55 - 130	Recovery	=	57.000%
46) 2-Hexanone-d5	8.627	63	66934	43.671	ug/L	0.00
Spike Amount	50.000	Range	45 - 130	Recovery	=	87.340%
56) 1,1,2,2-Tetrachloroethane	10.749	84	47140	5.220	ug/L	0.00
Spike Amount	5.000	Range	65 - 120	Recovery	=	104.400%
66) 1,2-Dichlorobenzene-d4	12.190	152	50529	5.700	ug/L	0.00
Spike Amount	5.000	Range	80 - 120	Recovery	=	114.000%
<b>Target Compounds</b>						
3) Chloromethane	1.518	50	1241	0.125	ug/L	91
13) Acetone	2.447	43	697495	595.958	ug/L	36
15) Methyl Acetate	2.808	43	3955234	1374.033	ug/L #	45
35) Methyl cyclohexane	6.685	83	12182	0.892	ug/L #	21
37) 1,2-Dichloropropane	6.679	63	4798	0.452	ug/L #	88
42) Toluene	7.965	91	468283	11.208	ug/L	99
61) 1,2,3-Trichloropropane	11.807	75	5701	1.101	ug/L #	67

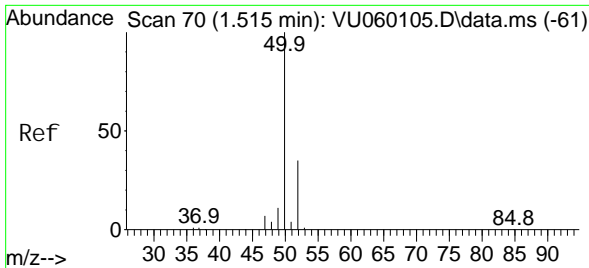
(#) = qualifier out of range (m) = manual integration (+) = signals summed

Data Path : Z:\voasrv\HPCHEM1\MSVOA\_U\Data\VU072324\  
 Data File : VU060117.D  
 Acq On : 23 Jul 2024 16:10  
 Operator : MD/SY  
 Sample : P3300-01  
 Misc : 25.0mL/MSVOA\_U/WATER  
 ALS Vial : 15 Sample Multiplier: 1

Instrument :  
 MSVOA\_U  
 ClientSampleId :

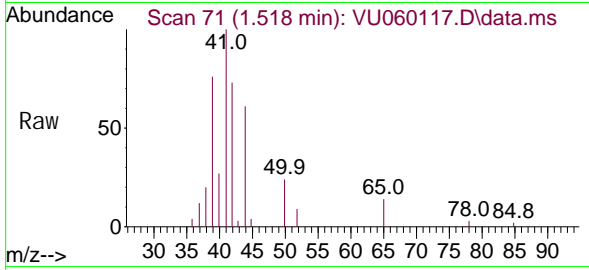
Quant Time: Jul 24 04:22:43 2024  
 Quant Method : Z:\voasrv\HPCHEM1\MSVOA\_U\Method\SFAMUTR071824WMA.M  
 Quant Title : TRACE VOA SFAM1.0  
 QLast Update : Wed Jul 24 04:18:44 2024  
 Response via : Initial Calibration



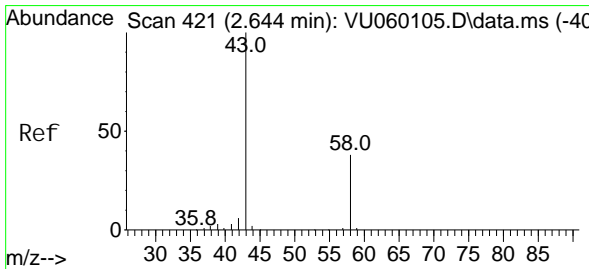
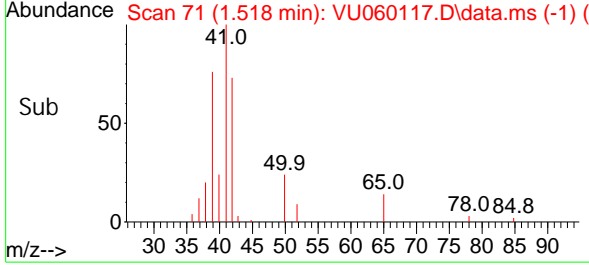
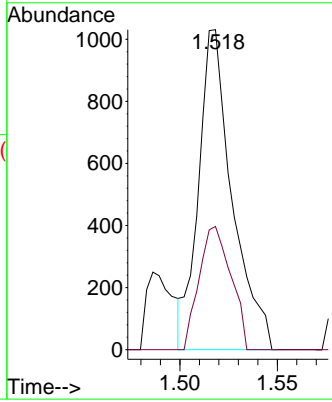


#3  
 Chloromethane  
 Concen: 0.125 ug/L  
 RT: 1.518 min Scan# 71  
 Delta R.T. 0.003 min  
 Lab File: VU060117.D  
 Acq: 23 Jul 2024 16:10

Instrument :  
 MSVOA\_U  
 ClientSampleId :

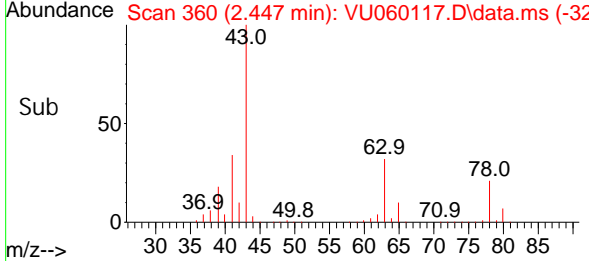
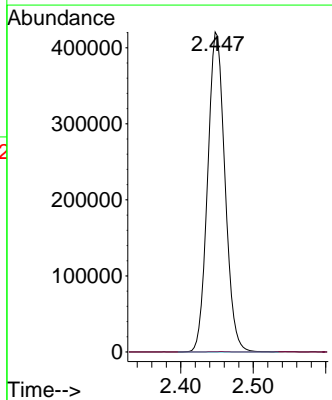
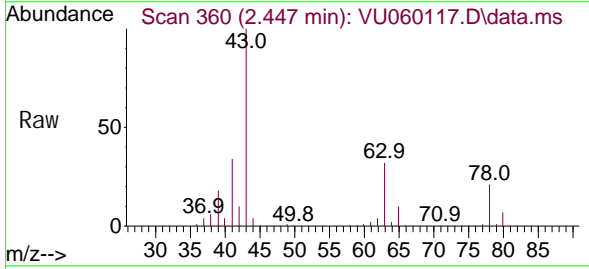


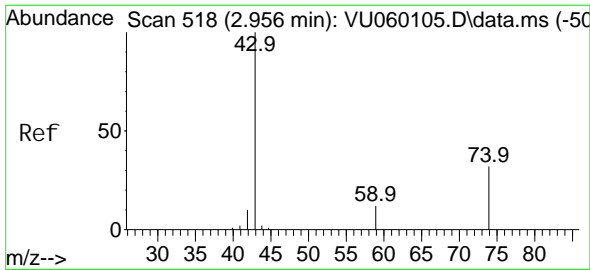
Tgt Ion: 50 Resp: 1241  
 Ion Ratio Lower Upper  
 50 100  
 52 38.5 23.4 43.4



#13  
 Acetone  
 Concen: 595.958 ug/L  
 RT: 2.447 min Scan# 360  
 Delta R.T. -0.196 min  
 Lab File: VU060117.D  
 Acq: 23 Jul 2024 16:10

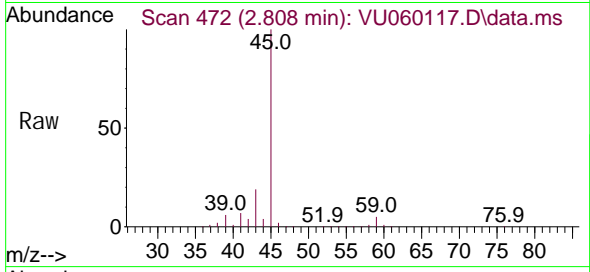
Tgt Ion: 43 Resp: 697495  
 Ion Ratio Lower Upper  
 43 100  
 58 1.3 0.0 82.2



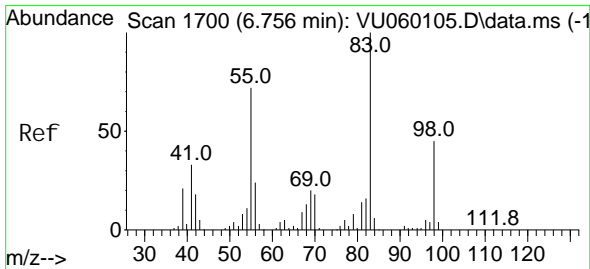
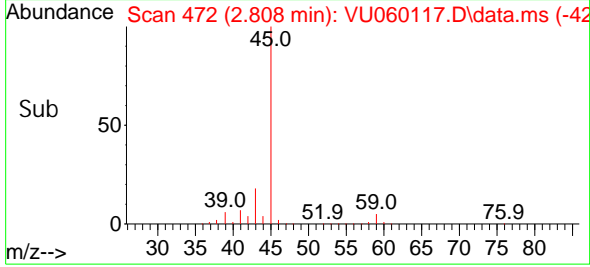
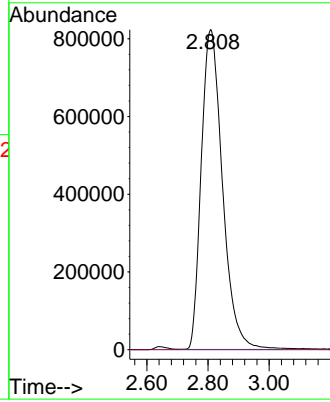


#15  
Methyl Acetate  
Concen: 1374.033 ug/L  
RT: 2.808 min Scan# 41  
Delta R.T. -0.148 min  
Lab File: VU060117.D  
Acq: 23 Jul 2024 16:10

Instrument :  
MSVOA\_U  
ClientSampleId :

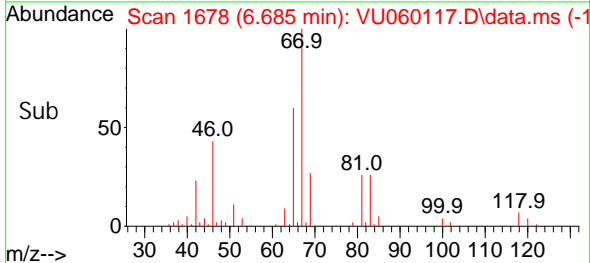
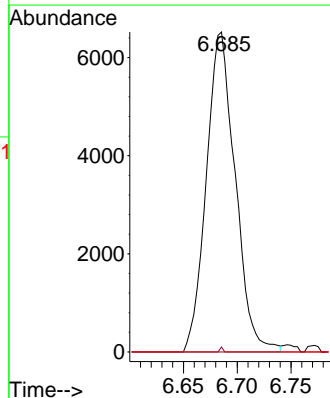
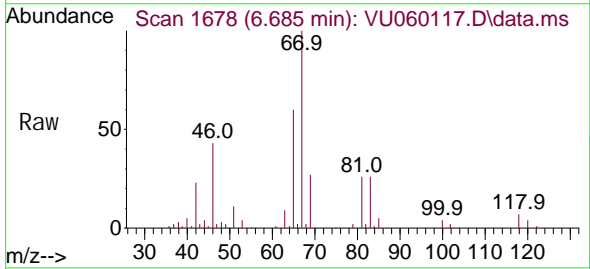


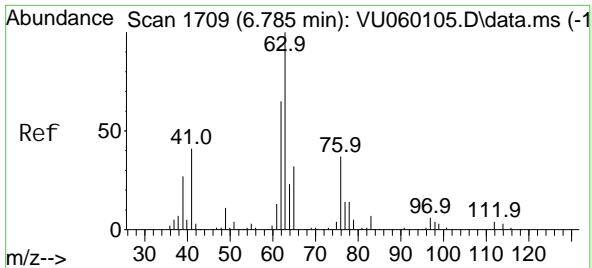
Tgt Ion: 43 Resp: 3955234  
Ion Ratio Lower Upper  
43 100  
74 0.0 23.5 35.3#



#35  
Methyl cycl ohexane  
Concen: 0.892 ug/L  
RT: 6.685 min Scan# 1678  
Delta R.T. -0.071 min  
Lab File: VU060117.D  
Acq: 23 Jul 2024 16:10

Tgt Ion: 83 Resp: 12182  
Ion Ratio Lower Upper  
83 100  
55 0.2 56.7 85.1#  
98 0.9 36.6 55.0#

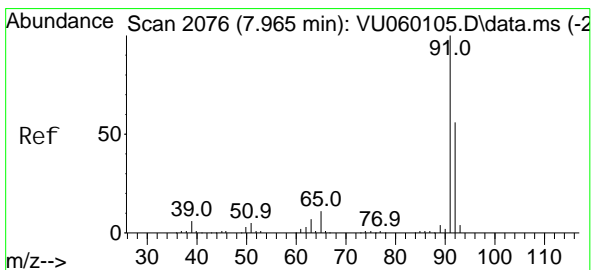
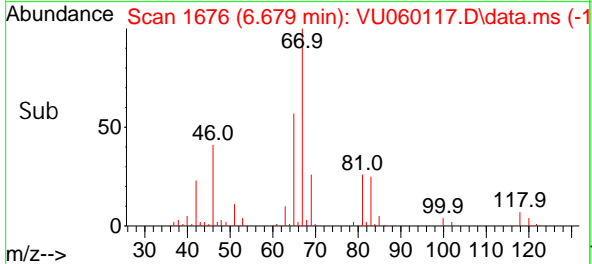
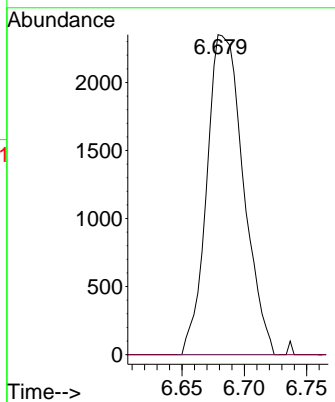
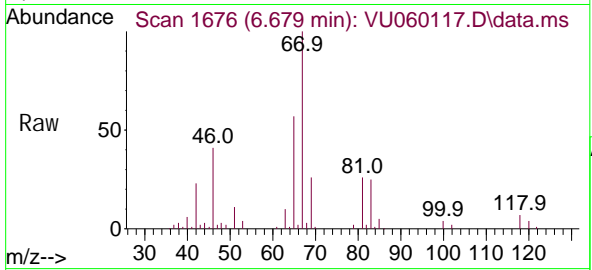




#37  
 1, 2-Di chl oropropane  
 Concen: 0.452 ug/L  
 RT: 6.679 min Scan# 1676  
 Delta R.T. -0.106 min  
 Lab File: VU060117.D  
 Acq: 23 Jul 2024 16:10

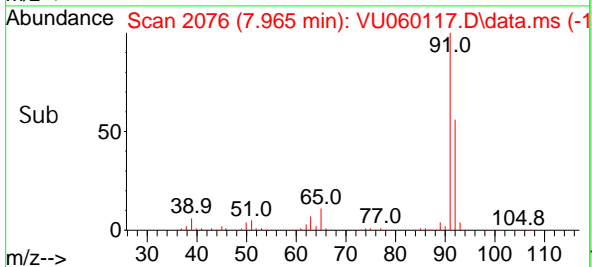
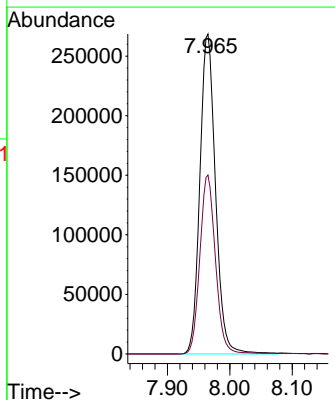
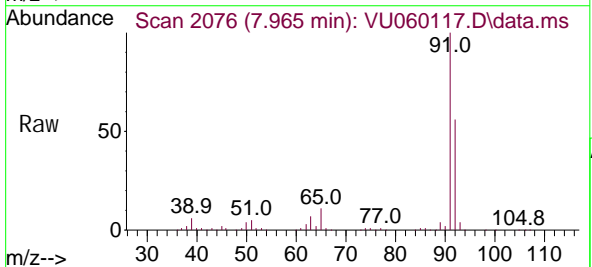
Instrument :  
 MSVOA\_U  
 ClientSampleId :

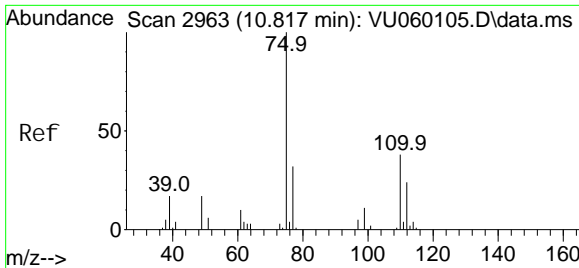
Tgt Ion: 63 Resp: 4798  
 Ion Ratio Lower Upper  
 63 100  
 112 0.0 3.3 4.9#



#42  
 Tol uene  
 Concen: 11.208 ug/L  
 RT: 7.965 min Scan# 2076  
 Delta R.T. -0.000 min  
 Lab File: VU060117.D  
 Acq: 23 Jul 2024 16:10

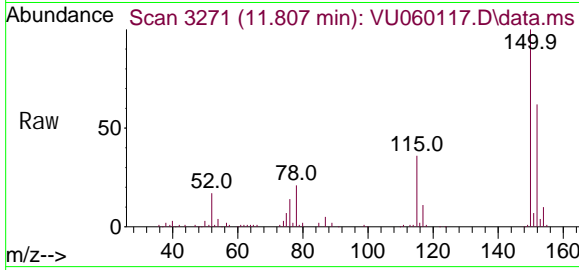
Tgt Ion: 91 Resp: 468283  
 Ion Ratio Lower Upper  
 91 100  
 92 55.9 39.8 73.8





#61  
 1, 2, 3-Tri chl oropropane  
 Concen: 1.101 ug/L  
 RT: 11.807 min Scan# 31  
 Del ta R.T. 0.990 min  
 Lab File: VU060117.D  
 Acq: 23 Jul 2024 16:10

Instrument :  
 MSVOA\_U  
 ClientSampleId :



Tgt Ion: 75 Resp: 5701

Ion	Ratio	Lower	Upper
75	100		
110	1.4	30.8	46.2#
77	33.0	26.2	39.2

