

Data Path : Z:\voasrv\HPCHEM1\MSVOA_U\Data\VU072522\
 Data File : VU049895.D
 Acq On : 26 Jul 2022 03:29
 Operator : SY/MD
 Sample : N3870-12
 Misc : 25.0mL/MSVOA_U/WATER
 ALS Vial : 35 Sample Multiplier: 1

Instrument :
 MSVOA_U
ClientSampleId :
 GBJ11

Quant Time: Jul 26 06:50:32 2022
 Quant Method : Z:\voasrv\HPCHEM1\MSVOA_U\Method\SFAMUTR072222WMA.M
 Quant Title : TRACE VOA SFAM1.0
 QLast Update : Tue Jul 26 06:46:04 2022
 Response via : Initial Calibration

Compound	R.T.	QIon	Response	Conc	Units	Dev(Min)

Internal Standards						
1) 1,4-Difluorobenzene	6.250	114	83489	5.000	ug/L	0.00
28) Chlorobenzene-d5	9.417	117	78633	5.000	ug/L	0.00
58) 1,4-Dichlorobenzene-d4	11.813	152	32433	5.000	ug/L	0.00
System Monitoring Compounds						
4) Vinyl Chloride-d3	1.598	65	30765	4.552	ug/L	0.00
Spiked Amount	5.000	Range 40 - 130	Recovery	=	91.000%	
7) Chloroethane-d5	1.909	69	27473	4.857	ug/L	0.00
Spiked Amount	5.000	Range 65 - 130	Recovery	=	97.200%	
11) 1,1-Dichloroethene-d2	2.565	65	14102	4.674	ug/L	0.00
Spiked Amount	5.000	Range 60 - 125	Recovery	=	93.400%	
20) 2-Butanone-d5	4.633	46	139886	57.519	ug/L	-0.01
Spiked Amount	50.000	Range 40 - 130	Recovery	=	115.040%	
24) Chloroform-d	5.064	84	75473	5.014	ug/L	0.00
Spiked Amount	5.000	Range 70 - 125	Recovery	=	100.200%	
26) 1,2-Dichloroethane-d4	5.703	65	44749	5.069	ug/L	0.00
Spiked Amount	5.000	Range 70 - 130	Recovery	=	101.400%	
32) Benzene-d6	5.729	84	137597	5.135	ug/L	0.00
Spiked Amount	5.000	Range 70 - 125	Recovery	=	102.800%	
36) 1,2-Dichloropropane-d6	6.691	67	50462	5.451	ug/L	0.00
Spiked Amount	5.000	Range 60 - 140	Recovery	=	109.000%	
41) Toluene-d8	7.900	98	107250	4.579	ug/L	0.00
Spiked Amount	5.000	Range 70 - 130	Recovery	=	91.600%	
43) trans-1,3-Dichloroprop...	8.182	79	14783	4.399	ug/L	0.00
Spiked Amount	5.000	Range 55 - 130	Recovery	=	88.000%	
46) 2-Hexanone-d5	8.636	63	66509	49.941	ug/L	0.00
Spiked Amount	50.000	Range 45 - 130	Recovery	=	99.880%	
56) 1,1,2,2-Tetrachloroeth...	10.758	84	42298	5.441	ug/L	0.00
Spiked Amount	5.000	Range 65 - 120	Recovery	=	108.800%	
66) 1,2-Dichlorobenzene-d4	12.195	152	37797	5.646	ug/L	0.00
Spiked Amount	5.000	Range 80 - 120	Recovery	=	113.000%	

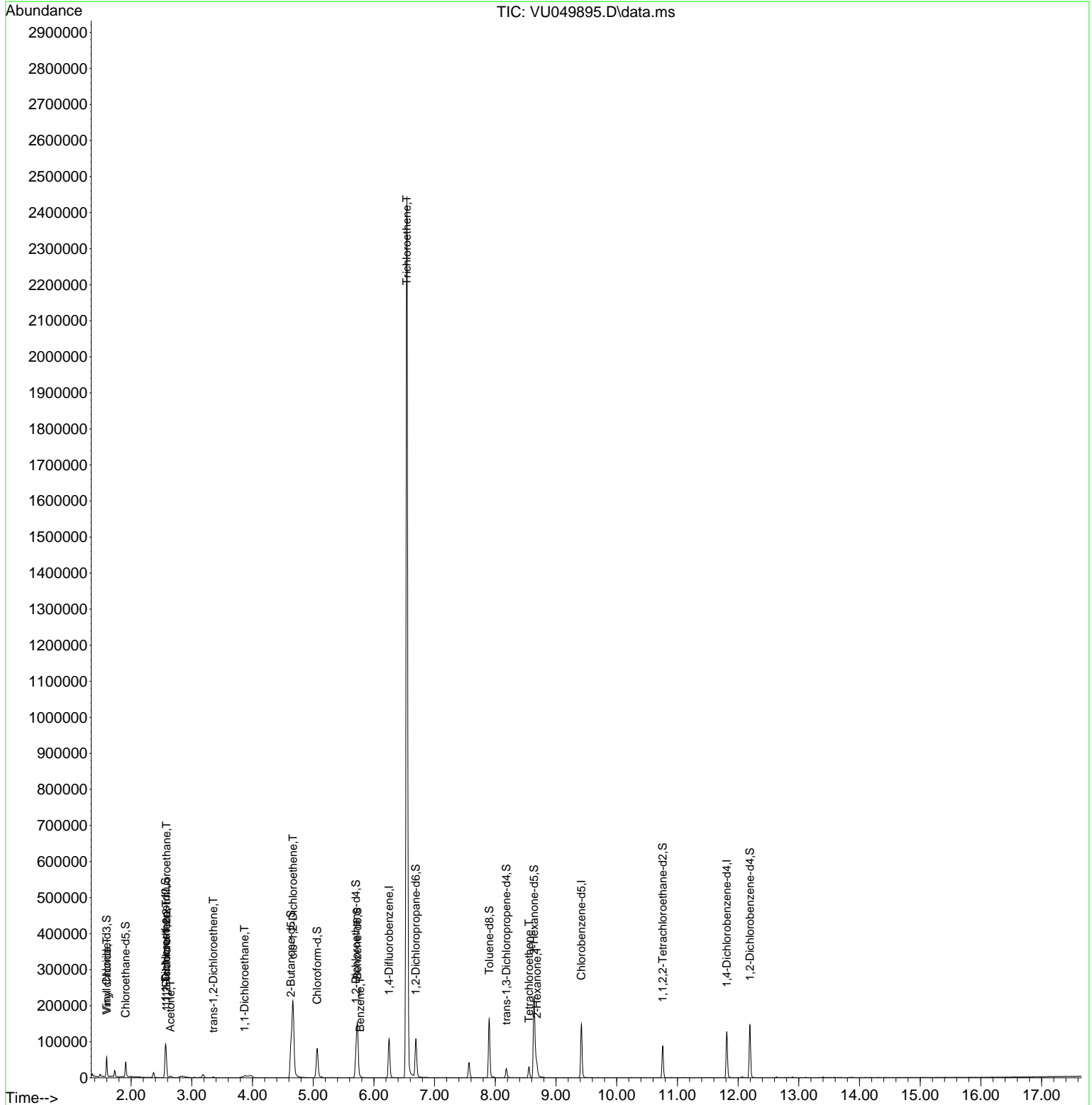
Target Compounds						Qvalue
5) Vinyl chloride	1.601	62	5305	0.585	ug/L	95
10) 1,1,2-Trichloro-1,2,2-...	2.581	101	6275	1.151	ug/L	95
12) 1,1-Dichloroethene	2.578	96	7497	1.359	ug/L #	14
13) Acetone	2.649	43	7464	5.103	ug/L	99
18) trans-1,2-Dichloroethene	3.353	96	662	0.104	ug/L #	87
19) 1,1-Dichloroethane	3.868	63	3585	0.260	ug/L	96
22) cis-1,2-Dichloroethene	4.668	96	90546	12.260	ug/L	98
33) Benzene	5.774	78	2634	0.092	ug/L	100
34) Trichloroethene	6.543	95	832403	120.320	ug/L	98
47) Tetrachloroethene	8.555	164	6398	1.343	ug/L	96
48) 2-Hexanone	8.684	43	19595	4.628	ug/L #	87

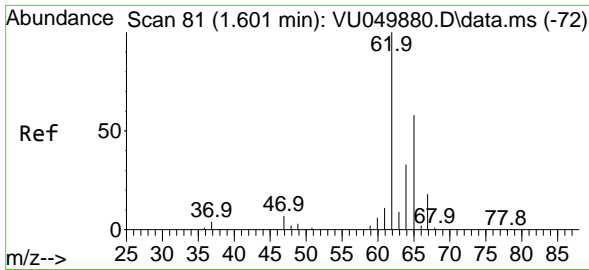
(#) = qualifier out of range (m) = manual integration (+) = signals summed

Data Path : Z:\voasrv\HPCHEM1\MSVOA_U\Data\VU072522\
 Data File : VU049895.D
 Acq On : 26 Jul 2022 03:29
 Operator : SY/MD
 Sample : N3870-12
 Misc : 25.0mL/MSVOA_U/WATER
 ALS Vial : 35 Sample Multiplier: 1

Instrument :
 MSVOA_U
 ClientSampleId :
 GBJ11

Quant Time: Jul 26 06:50:32 2022
 Quant Method : Z:\voasrv\HPCHEM1\MSVOA_U\Method\SFAMUTR072222WMA.M
 Quant Title : TRACE VOA SFAM1.0
 QLast Update : Tue Jul 26 06:46:04 2022
 Response via : Initial Calibration

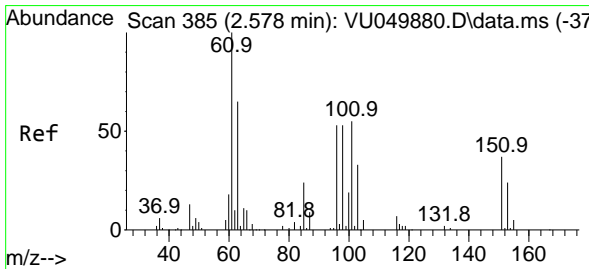
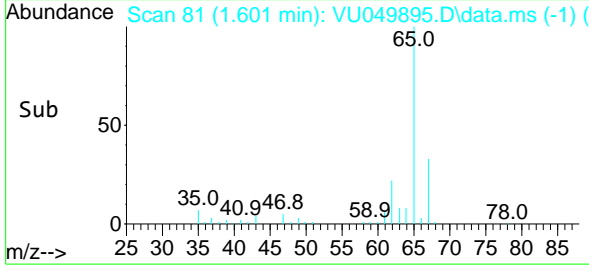
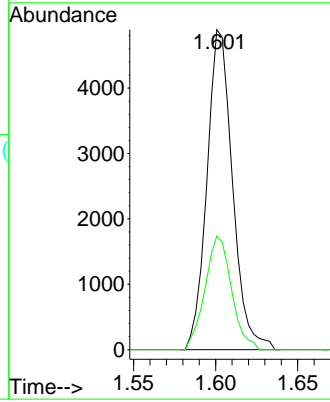
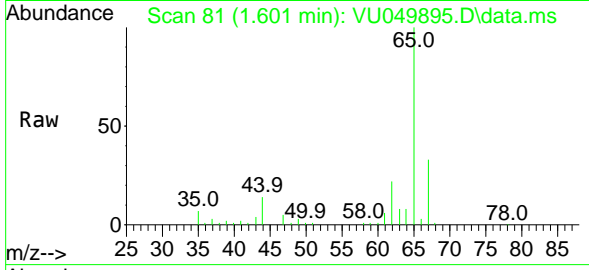




#5
 Vinyl chloride
 Concen: 0.585 ug/L
 RT: 1.601 min Scan# 81
 Delta R.T. 0.000 min
 Lab File: VU049895.D
 Acq: 26 Jul 2022 03:29

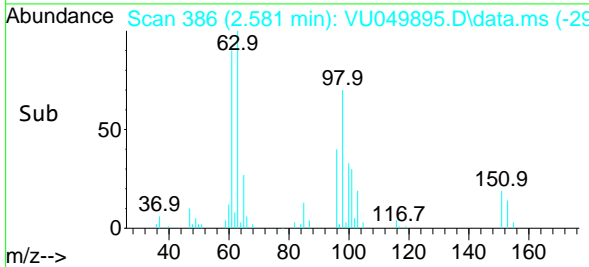
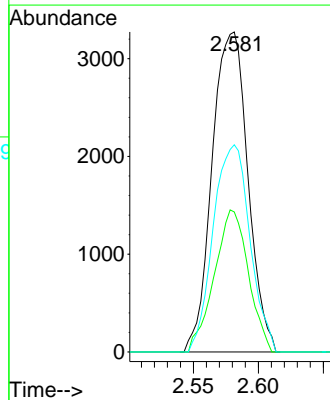
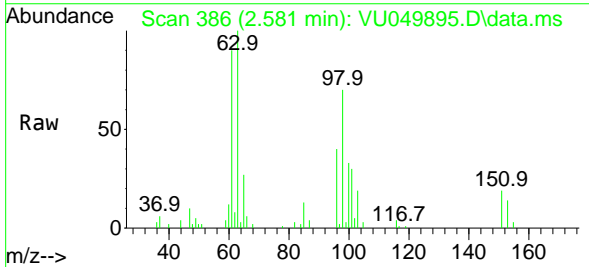
Instrument :
 MSVOA_U
 ClientSampleId :
 GBJ11

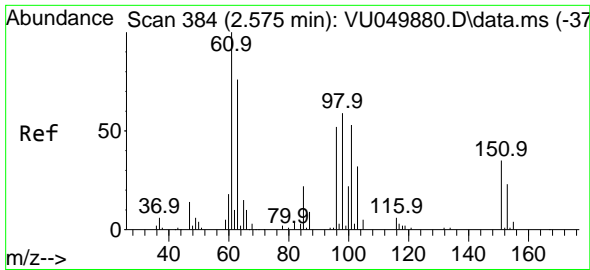
Tgt Ion: 62 Resp: 5305
 Ion Ratio Lower Upper
 62 100
 64 35.6 22.7 42.3



#10
 1,1,2-Trichloro-1,2,2-trifluoroethane
 Concen: 1.151 ug/L
 RT: 2.581 min Scan# 386
 Delta R.T. 0.003 min
 Lab File: VU049895.D
 Acq: 26 Jul 2022 03:29

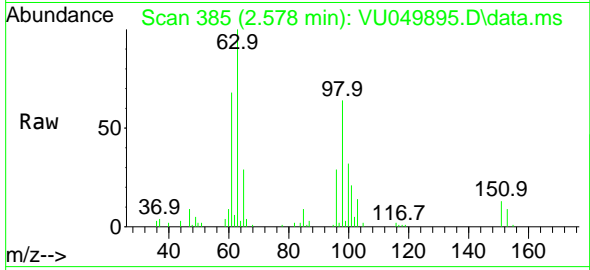
Tgt Ion: 101 Resp: 6275
 Ion Ratio Lower Upper
 101 100
 85 42.2 37.2 55.8
 151 66.4 56.0 84.0



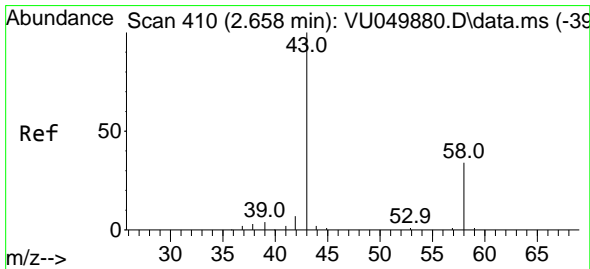
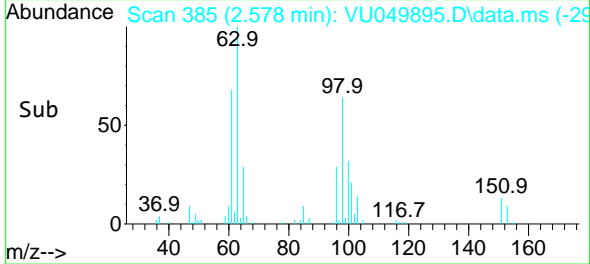
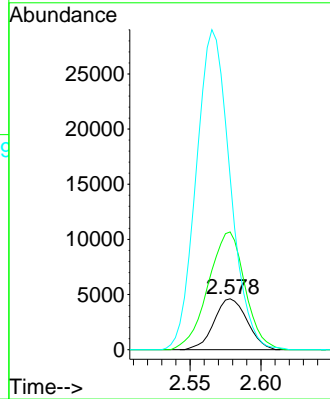


#12
 1,1-Dichloroethene
 Concen: 1.359 ug/L
 RT: 2.578 min Scan# 311
 Delta R.T. 0.003 min
 Lab File: VU049895.D
 Acq: 26 Jul 2022 03:29

Instrument :
 MSVOA_U
 ClientSampleId :
 GBJ11

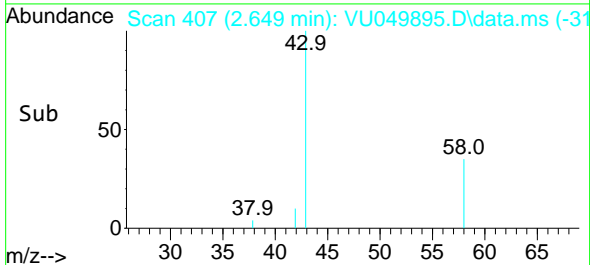
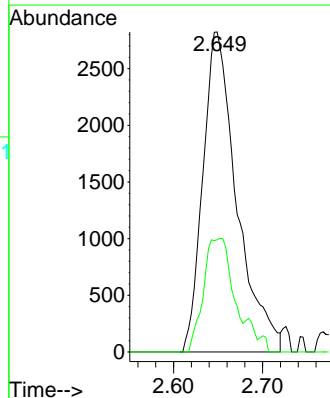
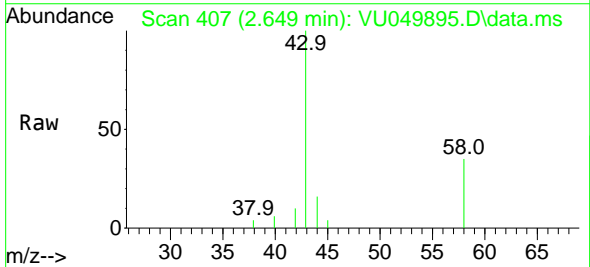


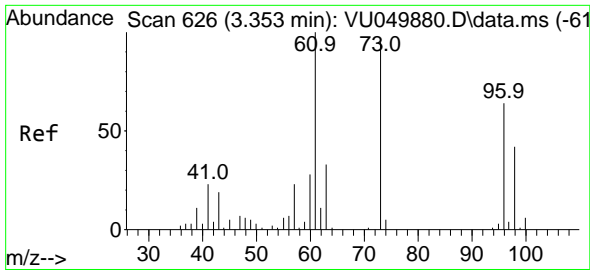
Tgt Ion: 96 Resp: 7497
 Ion Ratio Lower Upper
 96 100
 61 231.1 131.6 244.4
 63 339.8 100.0 185.6#



#13
 Acetone
 Concen: 5.103 ug/L
 RT: 2.649 min Scan# 407
 Delta R.T. -0.009 min
 Lab File: VU049895.D
 Acq: 26 Jul 2022 03:29

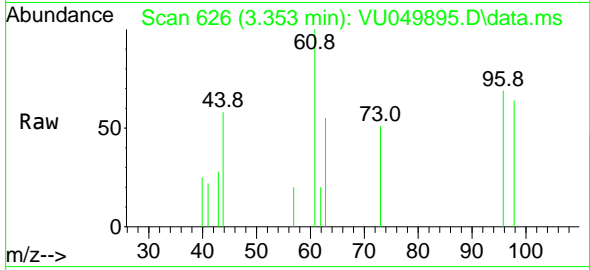
Tgt Ion: 43 Resp: 7464
 Ion Ratio Lower Upper
 43 100
 58 30.1 0.0 61.0



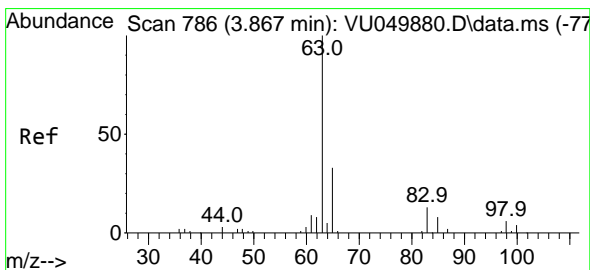
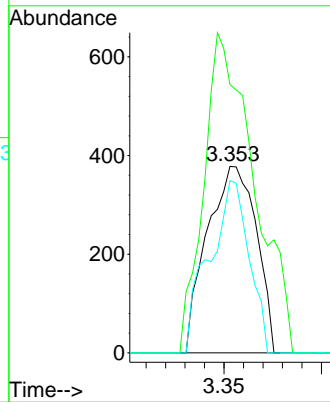
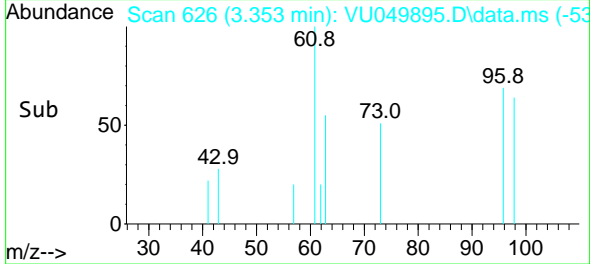


#18
 trans-1,2-Dichloroethene
 Concen: 0.104 ug/L
 RT: 3.353 min Scan# 61
 Delta R.T. 0.000 min
 Lab File: VU049895.D
 Acq: 26 Jul 2022 03:29

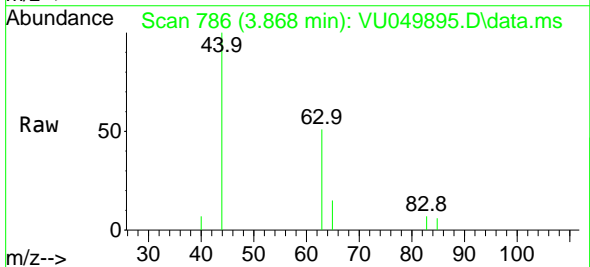
Instrument : MSVOA_U
 ClientSampleId : GBJ11



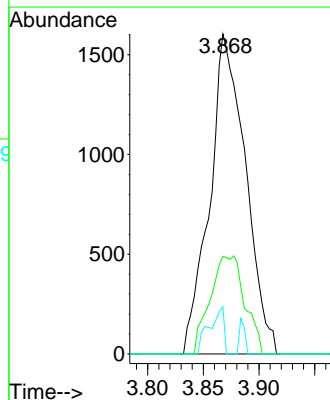
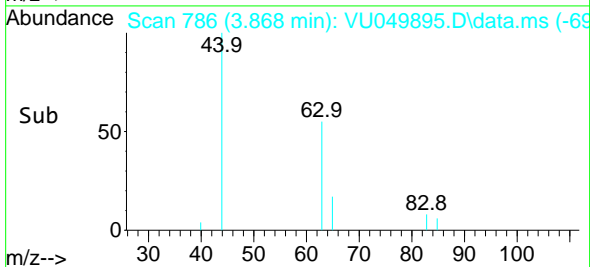
Tgt Ion: 96 Resp: 662
 Ion Ratio Lower Upper
 96 100
 61 143.9 101.5 188.5
 98 92.3 42.5 78.9#

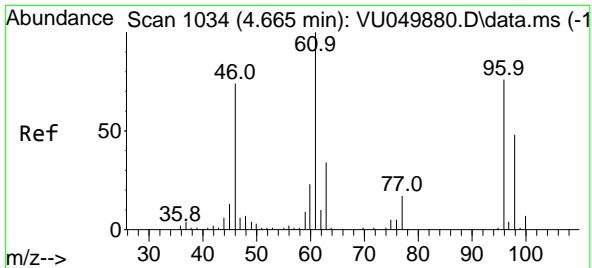


#19
 1,1-Dichloroethane
 Concen: 0.260 ug/L
 RT: 3.868 min Scan# 786
 Delta R.T. 0.000 min
 Lab File: VU049895.D
 Acq: 26 Jul 2022 03:29



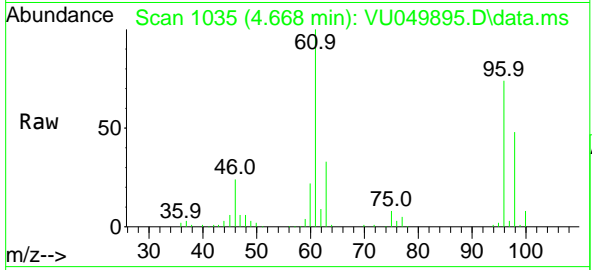
Tgt Ion: 63 Resp: 3585
 Ion Ratio Lower Upper
 63 100
 65 30.5 22.5 41.9
 83 14.8 8.3 15.5





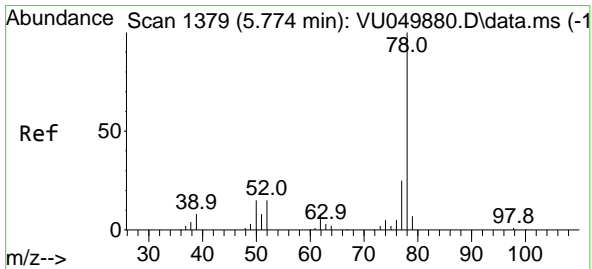
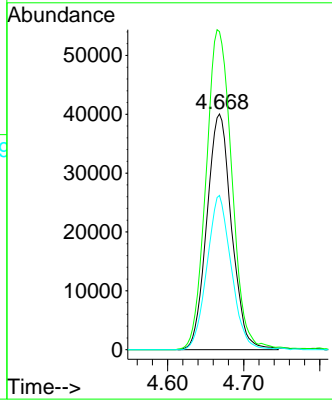
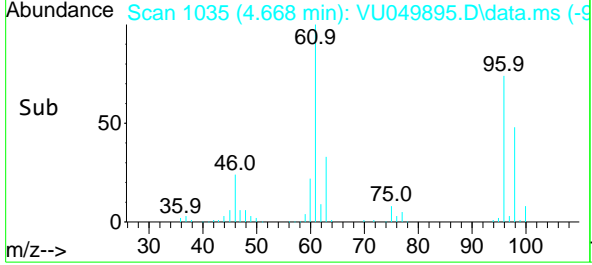
#22
 cis-1,2-Dichloroethene
 Concen: 12.260 ug/L
 RT: 4.668 min Scan# 1035
 Delta R.T. 0.003 min
 Lab File: VU049895.D
 Acq: 26 Jul 2022 03:29

Instrument : MSVOA_U
 ClientSampleId : GBJ11



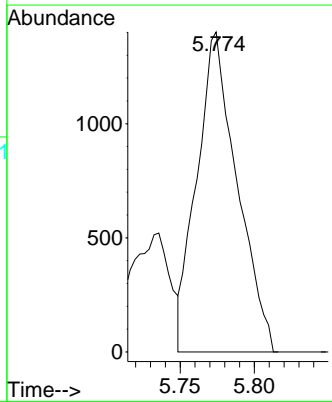
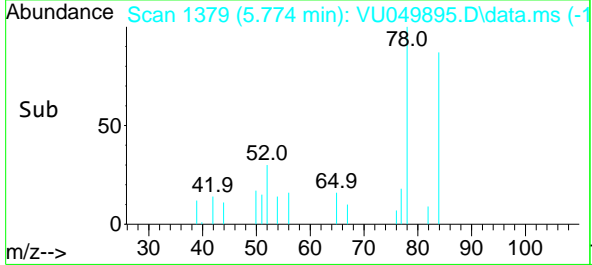
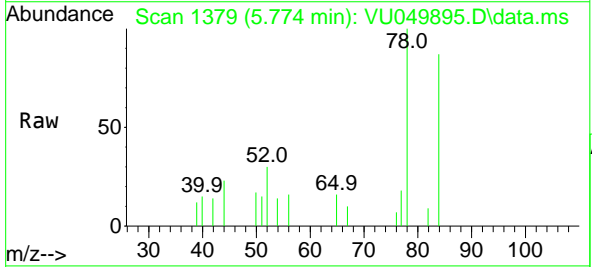
Tgt Ion: 96 Resp: 90546

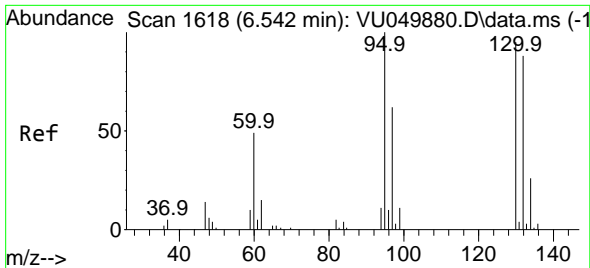
Ion	Ratio	Lower	Upper
96	100		
61	135.0	93.9	174.3
98	65.4	43.9	81.5



#33
 Benzene
 Concen: 0.092 ug/L
 RT: 5.774 min Scan# 1379
 Delta R.T. 0.000 min
 Lab File: VU049895.D
 Acq: 26 Jul 2022 03:29

Tgt Ion: 78 Resp: 2634



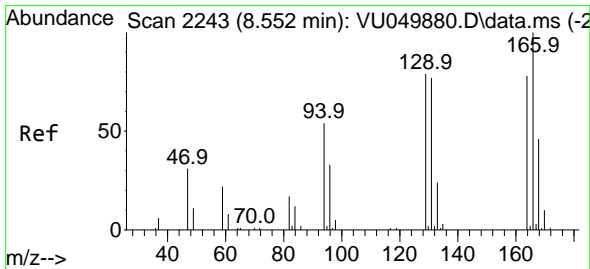
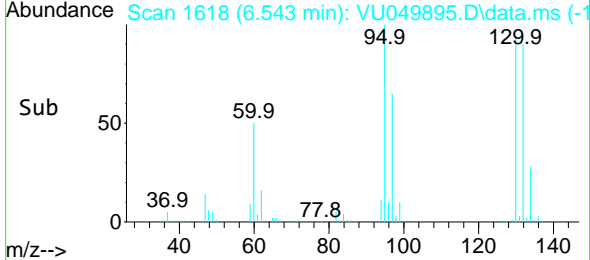
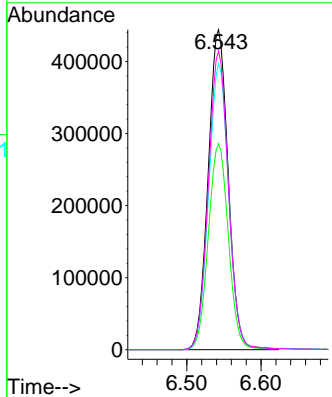
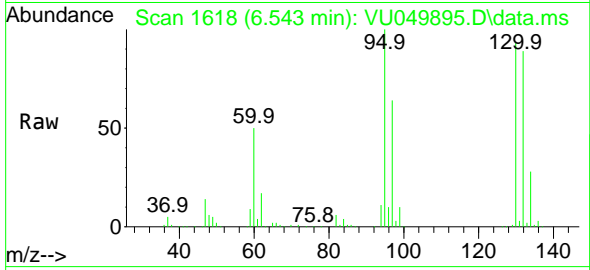


#34
 Trichloroethene
 Concen: 120.320 ug/L
 RT: 6.543 min Scan# 1
 Delta R.T. 0.000 min
 Lab File: VU049895.D
 Acq: 26 Jul 2022 03:29

Instrument : MSVOA_U
 ClientSampleId : GBJ11

Tgt Ion: 95 Resp: 832403

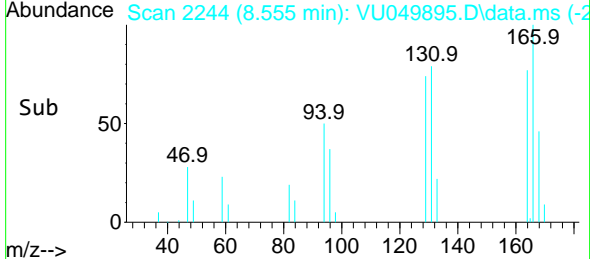
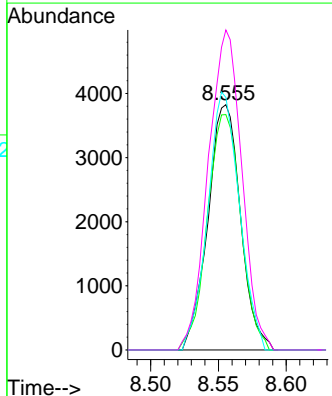
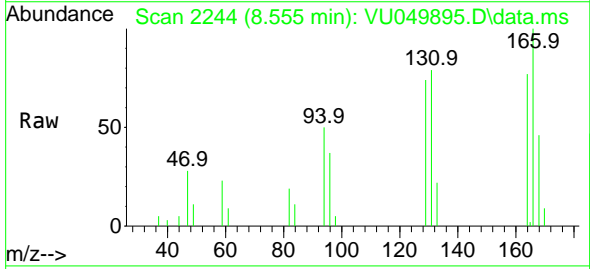
Ion	Ratio	Lower	Upper
95	100		
97	64.4	46.8	86.8
132	89.4	61.8	114.8
130	93.3	66.3	123.1

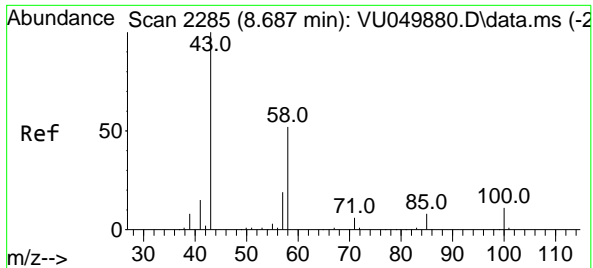


#47
 Tetrachloroethene
 Concen: 1.343 ug/L
 RT: 8.555 min Scan# 2244
 Delta R.T. 0.003 min
 Lab File: VU049895.D
 Acq: 26 Jul 2022 03:29

Tgt Ion: 164 Resp: 6398

Ion	Ratio	Lower	Upper
164	100		
129	95.9	68.9	127.9
131	103.0	67.5	125.4
166	130.4	89.2	165.8





#48
 2-Hexanone
 Concen: 4.628 ug/L
 RT: 8.684 min Scan# 21
 Delta R.T. -0.003 min
 Lab File: VU049895.D
 Acq: 26 Jul 2022 03:29

Instrument : MSVOA_U
 ClientSampleId : GBJ11

Tgt Ion: 43 Resp: 19595

Ion	Ratio	Lower	Upper
43	100		
58	41.7	42.1	63.1#
57	15.2	14.3	21.5
100	6.1	7.9	11.9#

