

Data Path : Z:\VOASRV\HPCHEM1\MSVOA U\DATA\VU072618\
 Data File : VU025648.D
 Acq On : 26 Jul 2018 14:04
 Operator : MD/SY
 Sample : J4040-10ME
 Misc : 5.34g/5mL/100uL/5.00mL/MSVOA_U/MEOH
 ALS Vial : 8 Sample Multiplier: 1

Instrument :
 MSVOA_U
 ClientSampleId :
 COAE9ME

Integration Parameters: LSCINT.P

Integrator: RTE
 Smoothing : OFF
 Sampling : 1
 Start Thrs: 0.2
 Stop Thrs : 0

Filtering: 5
 Min Area: 0 % of largest Peak
 Max Peaks: 100
 Peak Location: TOP

If leading or trailing edge < 100 prefer < Baseline drop else tangent >
 Peak separation: 5

Method : Z:\VOASRV\HPCHEM1\MSVOA_U\METHOD\SOMULM072018WMA.M
 Title : VOC Analysis

Signal : TIC

peak #	R.T. min	first scan	max scan	last scan	PK TY	peak height	corr. area	corr. % max.	% of total
1	0.635	12	14	18	rBV	283	251	0.02%	0.002%
2	0.699	28	34	36	rBV2	439	415	0.03%	0.004%
3	0.796	60	64	68	rVV	651	578	0.04%	0.005%
4	0.815	68	70	79	rVB2	271	299	0.02%	0.003%
5	0.960	113	115	122	rVB2	351	376	0.03%	0.003%
6	1.082	140	153	175	rBV	792343	874089	61.88%	7.441%
7	1.394	243	250	270	rVB	95869	141485	10.02%	1.204%
8	1.600	287	314	317	rBV10	28429	84447	5.98%	0.719%
9	1.641	323	327	335	rBV	55363	62773	4.44%	0.534%
10	2.239	503	513	526	rBV	235601	358014	25.35%	3.048%
11	2.503	593	595	597	rBV2	388	225	0.02%	0.002%
12	2.600	622	625	626	rBV2	642	375	0.03%	0.003%
13	2.683	647	651	657	rVB6	1325	1772	0.13%	0.015%
14	2.709	657	659	662	rVB2	602	344	0.02%	0.003%
15	2.744	666	670	672	rBV2	513	460	0.03%	0.004%
16	2.831	685	697	712	rBV2	5261	11722	0.83%	0.100%
17	2.924	723	726	730	rBV2	362	256	0.02%	0.002%
18	2.973	736	741	742	rBV2	557	406	0.03%	0.003%
19	3.072	761	772	775	rBV3	329	622	0.04%	0.005%
20	3.114	781	785	788	rBV2	387	347	0.02%	0.003%
21	3.140	790	793	795	rVV2	377	279	0.02%	0.002%
22	3.153	795	797	799	rVV	442	238	0.02%	0.002%
23	3.165	799	801	805	rVV2	353	263	0.02%	0.002%
24	3.185	805	807	809	rVV	364	217	0.02%	0.002%
25	3.220	813	818	820	rVB2	419	361	0.03%	0.003%
26	3.374	863	866	869	rVB2	469	294	0.02%	0.003%
27	3.400	869	874	878	rBV2	272	341	0.02%	0.003%
28	3.474	895	897	901	rBV3	265	267	0.02%	0.002%
29	3.664	952	956	960	rBV2	288	271	0.02%	0.002%
30	3.686	960	963	968	rVB3	282	229	0.02%	0.002%
31	3.895	1025	1028	1033	rVB	419	279	0.02%	0.002%
32	3.921	1033	1036	1039	rVB	336	238	0.02%	0.002%
33	3.944	1039	1043	1046	rBV2	326	231	0.02%	0.002%
34	4.108	1092	1094	1096	rBV2	406	222	0.02%	0.002%

Data Path : Z:\VOASRV\HPCHEM1\MSVOA U\DATA\VU072618\
 Data File : VU025648.D
 Acq On : 26 Jul 2018 14:04
 Operator : MD/SY
 Sample : J4040-10ME
 Misc : 5.34g/5mL/100uL/5.00mL/MSVOA_U/MEOH
 ALS Vial : 8 Sample Multiplier: 1

Instrument :
 MSVOA_U
 ClientSampleId :
 COAE9ME

Integration Parameters: LSCINT.P

Integrator: RTE
 Smoothing : OFF
 Sampling : 1
 Start Thrs: 0.2
 Stop Thrs : 0

Filtering: 5
 Min Area: 0 % of largest Peak
 Max Peaks: 100
 Peak Location: TOP

If leading or trailing edge < 100 prefer < Baseline drop else tangent >
 Peak separation: 5

Method : Z:\VOASRV\HPCHEM1\MSVOA_U\METHOD\SOMULM072018WMA.M
 Title : VOC Analysis

35	4.133	1099	1102	1103	rVV	516	324	0.02%	0.003%
36	4.191	1104	1120	1157	rVV	76589	254687	18.03%	2.168%
37	4.493	1211	1214	1216	rBV	408	292	0.02%	0.002%
38	4.644	1243	1261	1291	rVB2	195885	470361	33.30%	4.004%
39	4.783	1302	1304	1310	rVB3	472	397	0.03%	0.003%
40	4.870	1328	1331	1332	rBV2	613	416	0.03%	0.004%
41	4.931	1345	1350	1351	rBV2	557	325	0.02%	0.003%
42	4.947	1351	1355	1356	rBV2	899	642	0.05%	0.005%
43	5.027	1376	1380	1383	rBV2	362	323	0.02%	0.003%
44	5.062	1388	1391	1397	rVV2	193	235	0.02%	0.002%
45	5.236	1441	1445	1451	rBV2	375	471	0.03%	0.004%
46	5.333	1451	1475	1505	rVV2	402475	1171117	82.91%	9.969%
47	5.603	1551	1559	1562	rBV6	2111	2762	0.20%	0.024%
48	5.754	1602	1606	1609	rVB3	425	388	0.03%	0.003%
49	5.773	1609	1612	1616	rBV2	280	235	0.02%	0.002%
50	5.815	1621	1625	1627	rVB2	318	231	0.02%	0.002%
51	5.886	1631	1647	1672	rBV	488591	975340	69.05%	8.302%
52	6.056	1695	1700	1702	rBV2	437	366	0.03%	0.003%
53	6.169	1726	1735	1737	rBV6	2142	2555	0.18%	0.022%
54	6.246	1750	1759	1768	rVV7	2347	4568	0.32%	0.039%
55	6.329	1771	1785	1804	rBV	257250	531886	37.66%	4.528%
56	6.442	1818	1820	1821	rBV	531	219	0.02%	0.002%
57	6.451	1821	1823	1826	rVV2	549	341	0.02%	0.003%
58	6.850	1938	1947	1953	rBV4	2517	3763	0.27%	0.032%
59	6.921	1968	1969	1973	rVB	429	233	0.02%	0.002%
60	7.030	1999	2003	2010	rVB2	276	240	0.02%	0.002%
61	7.072	2010	2016	2021	rBV3	305	363	0.03%	0.003%
62	7.230	2052	2065	2087	rBV	149554	278519	19.72%	2.371%
63	7.332	2092	2097	2099	rBV3	271	254	0.02%	0.002%
64	7.368	2101	2108	2115	rBV4	1406	2165	0.15%	0.018%
65	7.490	2136	2146	2154	rBV3	1012	1716	0.12%	0.015%
66	7.567	2155	2170	2189	rBV	545885	961771	68.09%	8.187%
67	7.853	2246	2259	2279	rBV	108301	196699	13.93%	1.674%
68	7.940	2284	2286	2290	rVB2	512	349	0.02%	0.003%
69	8.024	2309	2312	2316	rVB2	505	412	0.03%	0.004%
70	8.043	2316	2318	2323	rVB3	343	242	0.02%	0.002%
71	8.185	2351	2362	2363	rBV	2271	2682	0.19%	0.023%

Data Path : Z:\VOASRV\HPCHEM1\MSVOA U\DATA\VU072618\
 Data File : VU025648.D
 Acq On : 26 Jul 2018 14:04
 Operator : MD/SY
 Sample : J4040-10ME
 Misc : 5.34g/5mL/100uL/5.00mL/MSVOA_U/MEOH
 ALS Vial : 8 Sample Multiplier: 1

Instrument :
 MSVOA_U
 ClientSampleId :
 COAE9ME

Integration Parameters: LSCINT.P

Integrator: RTE
 Smoothing : OFF Filtering: 5
 Sampling : 1 Min Area: 0 % of largest Peak
 Start Thrs: 0.2 Max Peaks: 100
 Stop Thrs : 0 Peak Location: TOP

If leading or trailing edge < 100 prefer < Baseline drop else tangent >
 Peak separation: 5

Method : Z:\VOASRV\HPCHEM1\MSVOA_U\METHOD\SOMULM072018WMA.M
 Title : VOC Analysis

72	8.226	2364	2375	2392	rVV	203519	350336	24.80%	2.982%
73	8.323	2392	2405	2432	rVV	325701	589201	41.71%	5.015%
74	8.535	2467	2471	2474	rBV2	253	260	0.02%	0.002%
75	8.654	2504	2508	2510	rBV	380	366	0.03%	0.003%
76	8.766	2538	2543	2547	rBV2	567	651	0.05%	0.006%
77	8.895	2578	2583	2586	rBV2	266	275	0.02%	0.002%
78	8.914	2586	2589	2592	rBV2	329	232	0.02%	0.002%
79	9.094	2630	2645	2668	rBV	716289	1209761	85.65%	10.298%
80	9.226	2682	2686	2689	rBV2	323	224	0.02%	0.002%
81	9.255	2690	2695	2700	rBV2	508	579	0.04%	0.005%
82	9.377	2730	2733	2736	rBV3	393	305	0.02%	0.003%
83	9.535	2779	2782	2784	rBV	282	233	0.02%	0.002%
84	10.226	2990	2997	3001	rBV6	1237	1383	0.10%	0.012%
85	10.438	3051	3063	3082	rBV	417960	670096	47.44%	5.704%
86	10.567	3099	3103	3108	rVB2	504	486	0.03%	0.004%
87	10.609	3108	3116	3122	rBV4	1599	2206	0.16%	0.019%
88	10.664	3130	3133	3137	rBV2	331	256	0.02%	0.002%
89	10.869	3193	3197	3200	rBV2	615	521	0.04%	0.004%
90	11.194	3295	3298	3303	rBV	442	371	0.03%	0.003%
91	11.490	3377	3390	3407	rBV	889297	1412505	100.00%	12.024%
92	11.802	3483	3487	3489	rBV	535	350	0.02%	0.003%
93	11.866	3493	3507	3524	rVV	682375	1086873	76.95%	9.252%
94	12.487	3693	3700	3712	rVB4	1735	3065	0.22%	0.026%
95	12.573	3724	3727	3734	rVB5	487	551	0.04%	0.005%
96	12.962	3845	3848	3853	rVB2	518	504	0.04%	0.004%
97	13.052	3873	3876	3878	rBV	432	224	0.02%	0.002%
98	13.515	4017	4020	4024	rVB3	665	550	0.04%	0.005%
99	13.728	4082	4086	4088	rBV2	477	442	0.03%	0.004%
100	14.281	4252	4258	4269	rVB3	2373	3959	0.28%	0.034%

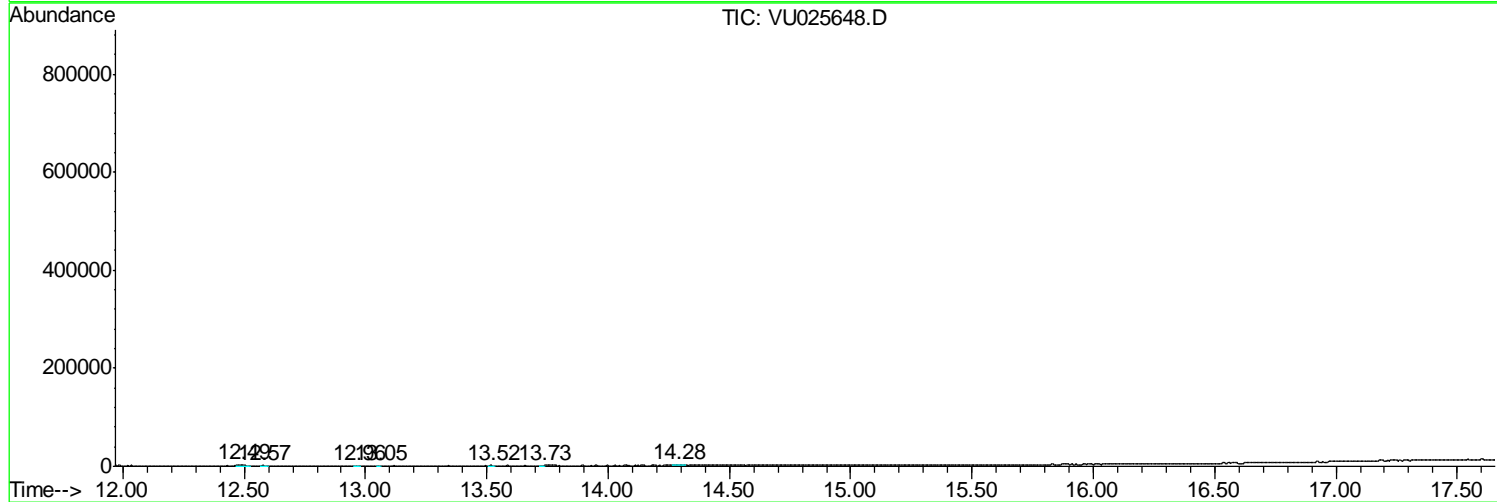
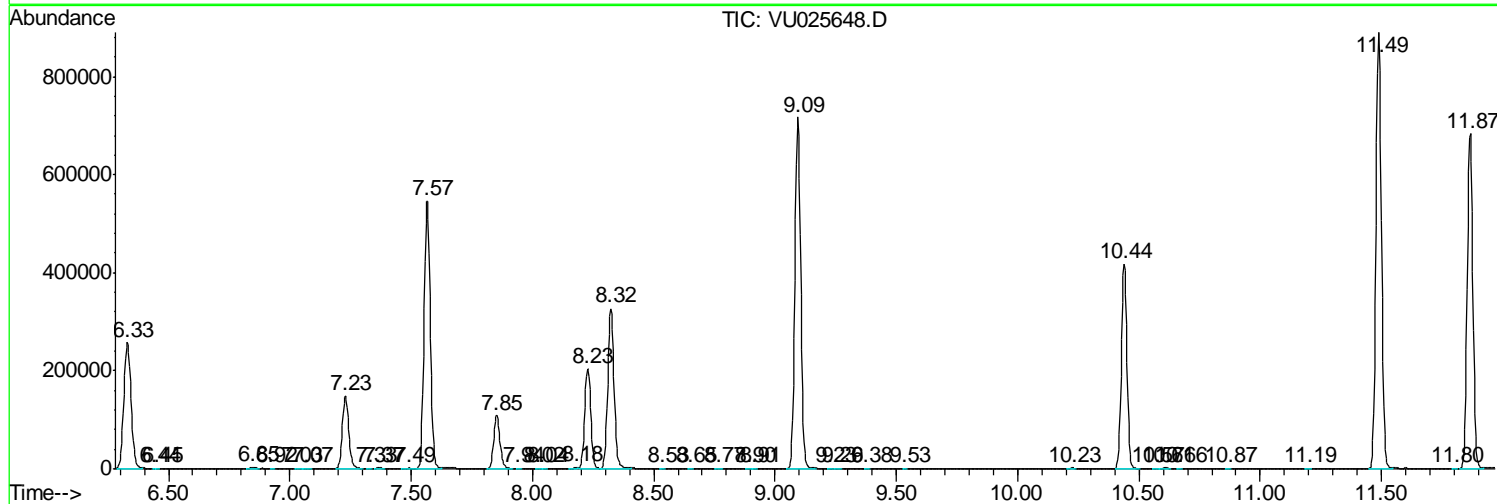
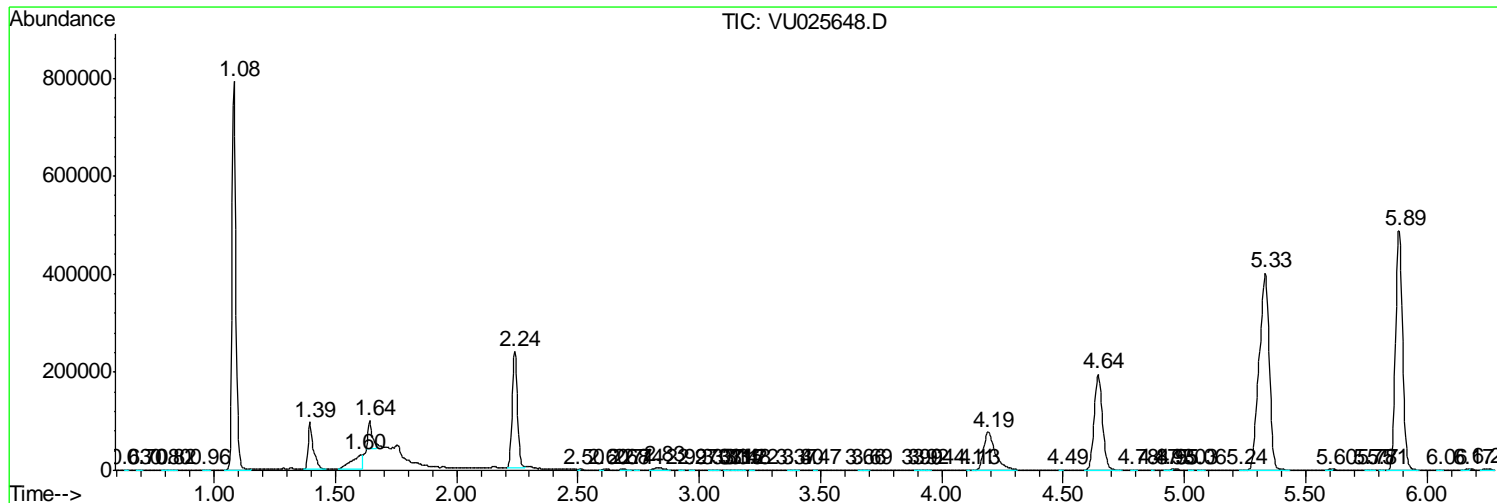
Sum of corrected areas: 11747640

Data Path : Z:\VOASRV\HPCHEM1\MSVOA U\DATA\VU072618\
 Data File : VU025648.D
 Acq On : 26 Jul 2018 14:04
 Operator : MD/SY
 Sample : J4040-10ME
 Misc : 5.34µ/5mL/100uL/5.00mL/MSVOA_U/MEOH
 ALS Vial : 8 Sample Multiplier: 1

Instrument :
 MSVOA_U
Client Sampled :
 COAE9ME

Quant Method : Z:\VOASRV\HPCHEM1\MSVOA_U\METHOD\SOMULM072018WMA.M
 Quant Title : VOC Analysis

TIC Library : C:\DATABASE\NIST11.L
 TIC Integration Parameters: LSCINT.P



Data Path : Z:\VOASRV\HPCHEM1\MSVOA_U\DATA\VU072618\
Data File : VU025648.D
Acq On : 26 Jul 2018 14:04
Operator : MD/SY
Sample : J4040-10ME
Misc : 5.34g/5mL/100uL/5.00mL/MSVOA_U/MEOH
ALS Vial : 8 Sample Multiplier: 1

Instrument :
MSVOA_U
ClientSampleId :
COAE9ME

Quant Method : Z:\VOASRV\HPCHEM1\MSVOA_U\METHOD\SOMULM072018WMA.M
Quant Title : VOC Analysis

TIC Library : C:\DATABASE\NIST11.L
TIC Integration Parameters: LSCINT.P

No Library Search Compounds Detected

Data Path : Z:\VOASRV\HPCHEM1\MSVOA_U\DATA\VU072618\
Data File : VU025648.D
Acq On : 26 Jul 2018 14:04
Operator : MD/SY
Sample : J4040-10ME
Misc : 5.34g/5mL/100uL/5.00mL/MSVOA_U/MEOH
ALS Vial : 8 Sample Multiplier: 1

Instrument :
MSVOA_U
ClientSampleId :
COAE9ME

Quant Method : Z:\VOASRV\HPCHEM1\MSVOA_U\METHOD\SOMULM072018WMA.M
Quant Title : VOC Analysis

TIC Library : C:\DATABASE\NIST11.L
TIC Integration Parameters: LSCINT.P

TIC Top Hit name	RT	EstConc	Units	Response	--Internal Standard--			
					#	RT	Resp	Conc
