

Data File : VU033453.D  
 Acq On : 26 Jul 2019 15:10  
 Operator : JC/SP  
 Sample : K3976-09DL 5X  
 Misc : 5.0mL/MSVOA\_U/WATER  
 ALS Vial : 15 Sample Multiplier: 1

Instrument :  
 MSVOA\_U  
 Client Sampled :  
 C0C99DL

Quant Time: Jul 27 02:02:23 2019  
 Quant Method : Z:\VOASRV\HPCHEM1\MSVOA\_U\METHOD\SOMULM071219WMA.M  
 Quant Title : VOC Analysis  
 QLast Update : Sat Jul 27 01:57:42 2019  
 Response via : Initial Calibration

Internal Standards	R.T.	QIon	Response	Conc	Units	Dev(Min)
1) 1,4-Difluorobenzene	5.86	114	253037	50.00	ug/L	0.00
28) Chlorobenzene-d5	9.07	117	258818	50.00	ug/L	0.00
60) 1,4-Dichlorobenzene-d4	11.47	152	111494	50.00	ug/L	0.00

System Monitoring Compounds

4) Vinyl Chloride-d3	1.39	65	106096	55.39	ug/L	0.00
Spiked Amount	50.000	Range	60 - 135	Recovery	=	110.78%
7) Chloroethane-d5	1.67	69	95423	58.31	ug/L	0.00
Spiked Amount	50.000	Range	70 - 130	Recovery	=	116.62%
11) 1,1-Dichloroethene-d2	2.25	63	145901	41.99	ug/L	0.00
Spiked Amount	50.000	Range	60 - 125	Recovery	=	83.98%
21) 2-Butanone-d5	4.15	46	138327	113.97	ug/L	0.00
Spiked Amount	100.000	Range	40 - 130	Recovery	=	113.97%
24) Chloroform-d	4.62	84	176634	55.02	ug/L	0.00
Spiked Amount	50.000	Range	70 - 125	Recovery	=	110.04%
26) 1,2-Dichloroethane-d4	5.29	65	119626	58.10	ug/L	0.00
Spiked Amount	50.000	Range	70 - 125	Recovery	=	116.20%
32) Benzene-d6	5.32	84	357355	56.28	ug/L	0.00
Spiked Amount	50.000	Range	70 - 125	Recovery	=	112.56%
36) 1,2-Dichloropropane-d6	6.31	67	116716	57.39	ug/L	0.00
Spiked Amount	50.000	Range	70 - 120	Recovery	=	114.78%
41) Toluene-d8	7.55	98	320006	53.45	ug/L	0.00
Spiked Amount	50.000	Range	80 - 120	Recovery	=	106.90%
43) trans-1,3-Dichloropropene-	7.83	79	50157	50.29	ug/L	0.00
Spiked Amount	50.000	Range	60 - 125	Recovery	=	100.58%
47) 2-Hexanone-d5	8.30	63	95378	104.02	ug/L	0.00
Spiked Amount	100.000	Range	45 - 130	Recovery	=	104.02%
57) 1,1,2,2-Tetrachloroethane-	10.41	84	171237	55.63	ug/L	0.00
Spiked Amount	50.000	Range	65 - 120	Recovery	=	111.26%
64) 1,2-Dichlorobenzene-d4	11.85	152	118355	59.52	ug/L	0.00
Spiked Amount	50.000	Range	80 - 120	Recovery	=	119.04%

Target Compounds

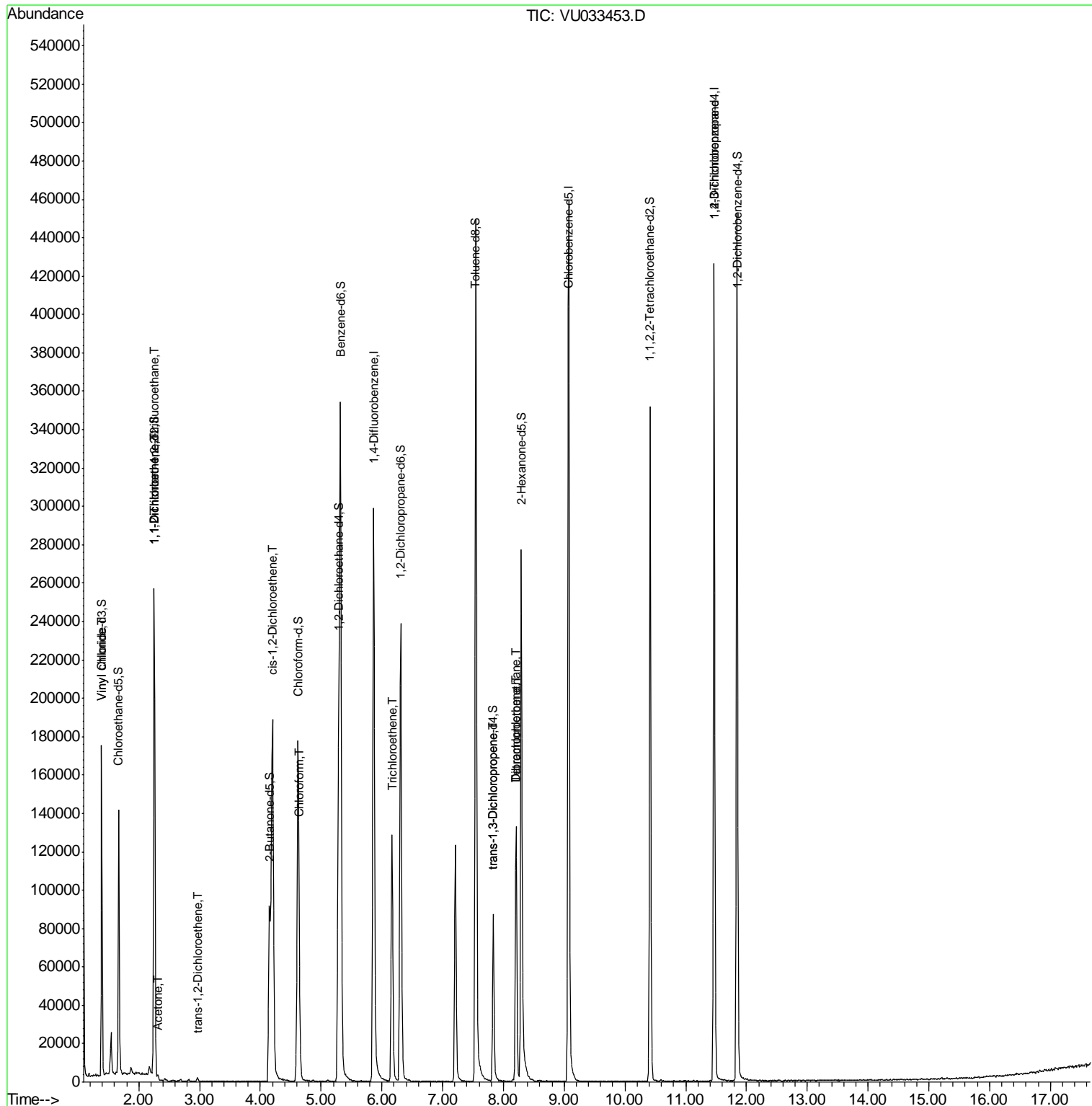
						Qvalue
5) Vinyl chloride	1.40	62	8495	2.975	ug/L #	72
10) 1,1,2-Trichloro-1,2,2-trif	2.26	101	1523	0.882	ug/L #	21
12) 1,1-Dichloroethene	2.26	96	1506	0.892	ug/L #	1
13) Acetone	2.31	43	919	0.606	ug/L	64
17) trans-1,2-Dichloroethene	2.96	96	774	0.443	ug/L	74
20) cis-1,2-Dichloroethene	4.20	96	103785	52.712	ug/L	100
25) Chloroform	4.65	83	6190	1.735	ug/L	100
34) Trichloroethene	6.16	95	44230	22.407	ug/L	98
44) trans-1,3-Dichloropropene	7.83	75	2361	0.834	ug/L	83
46) Tetrachloroethene	8.21	164	30102	19.699	ug/L	97
49) Dibromochloromethane	8.21	129	28669	13.276	ug/L #	11
59) 1,2,3-Trichloropropane	11.47	75	13624	5.113	ug/L	91

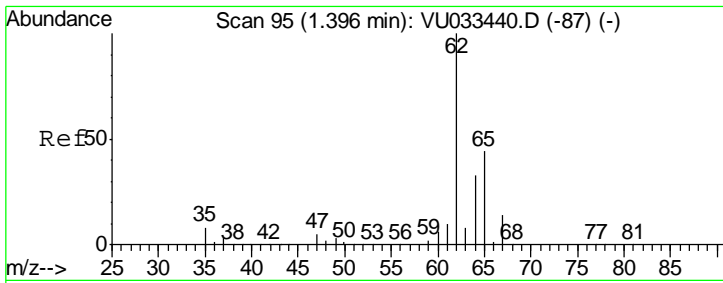
(#) = qualifier out of range (m) = manual integration (+) = signals summed

Data File : VU033453.D  
Acq On : 26 Jul 2019 15:10  
Operator : JC/SP  
Sample : K3976-09DL 5X  
Misc : 5.0mL/MSVOA\_U/WATER  
ALS Vial : 15 Sample Multiplier: 1

Instrument :  
MSVOA\_U  
Client Sampled :  
C0C99DL

Quant Time: Jul 27 02:02:23 2019  
Quant Method : Z:\VOASRV\HPCHEM1\MSVOA\_U\METHOD\SOMULM071219WMA.M  
Quant Title : VOC Analysis  
QLast Update : Sat Jul 27 01:57:42 2019  
Response via : Initial Calibration

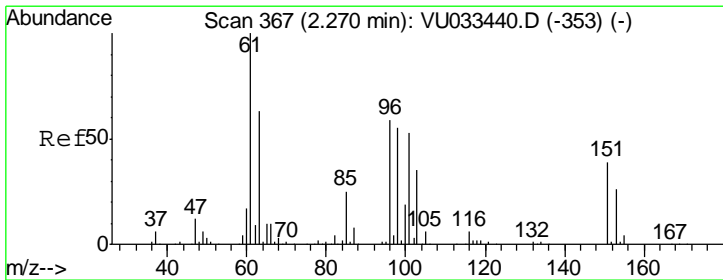
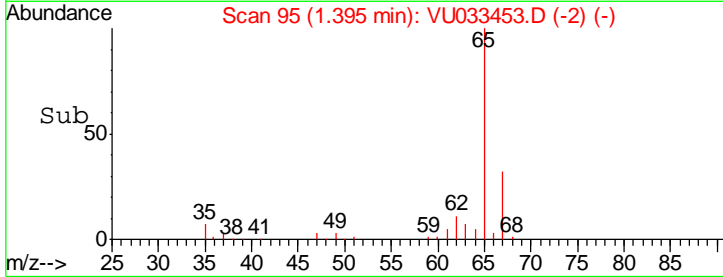
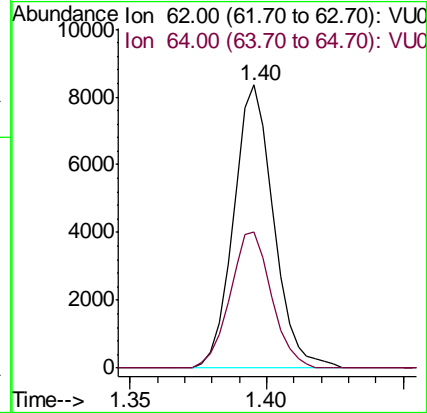
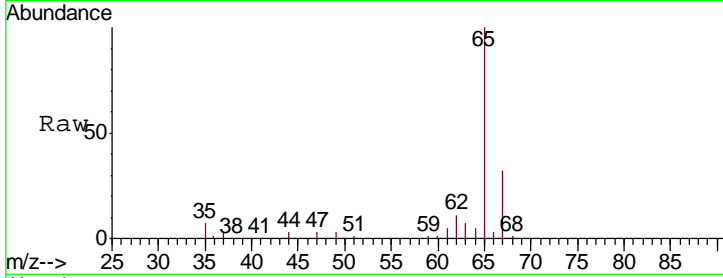




#5  
 Vinyl chloride  
 Concen: 2.975 ug/L  
 RT: 1.40 min Scan# 95  
 Delta R.T. -0.00 min  
 Lab File: VU033453.D  
 Acq: 26 Jul 2019 15:10

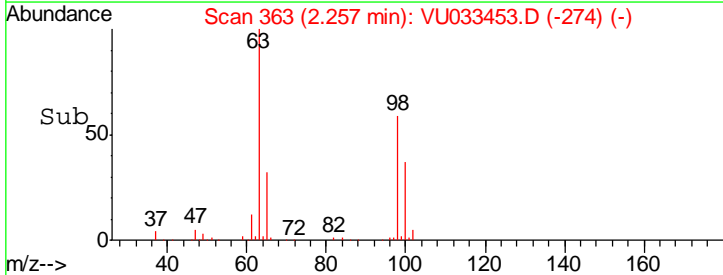
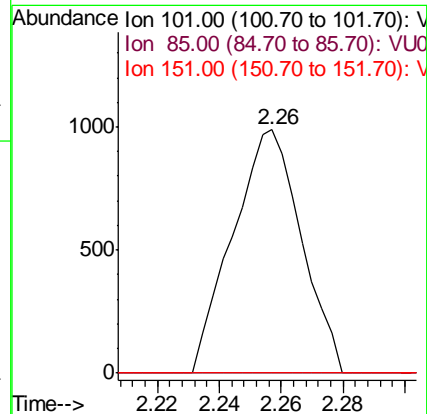
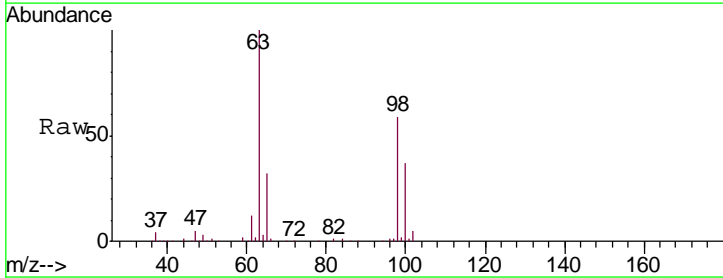
Instrument :  
 MSVOA\_U  
 ClientSampled :  
 C0C99DL

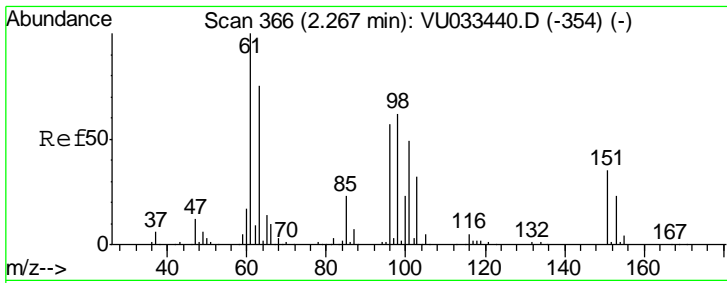
Tgt Ion	Resp	Lower	Upper
62	100		
64	48.3	22.7	42.3#



#10  
 1,1,2-Trichloro-1,2,2-trifluoroethane  
 Concen: 0.882 ug/L  
 RT: 2.26 min Scan# 363  
 Delta R.T. -0.01 min  
 Lab File: VU033453.D  
 Acq: 26 Jul 2019 15:10

Tgt Ion	Resp	Lower	Upper
101	100		
85	0.0	35.8	53.8#
151	0.0	56.7	85.1#

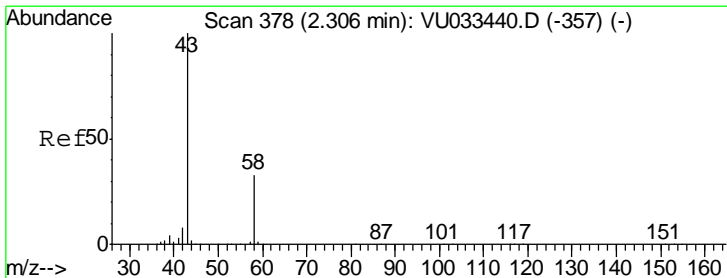
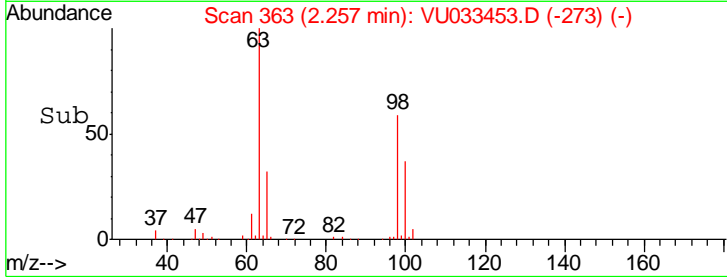
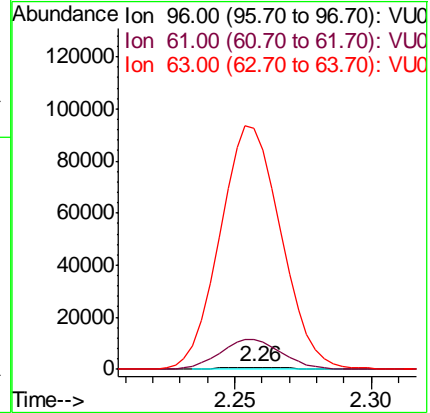
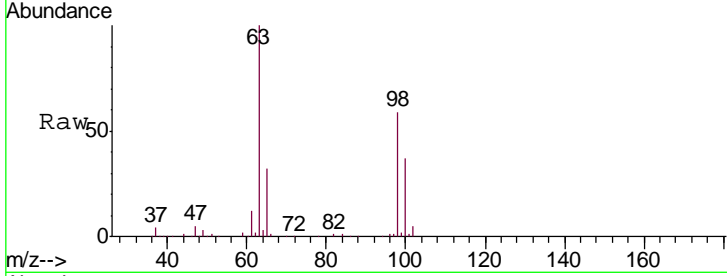




#12  
 1,1-Dichloroethene  
 Concen: 0.892 ug/L  
 RT: 2.26 min Scan# 363  
 Delta R.T. -0.01 min  
 Lab File: VU033453.D  
 Acq: 26 Jul 2019 15:10

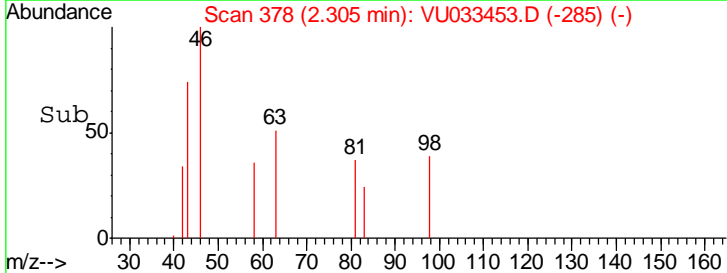
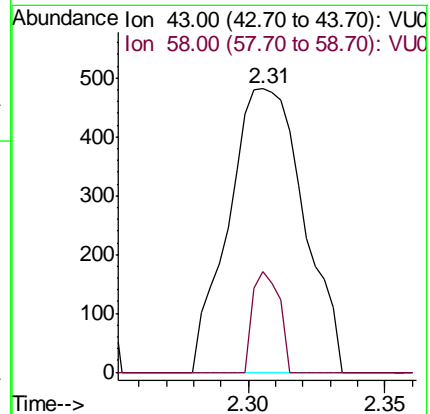
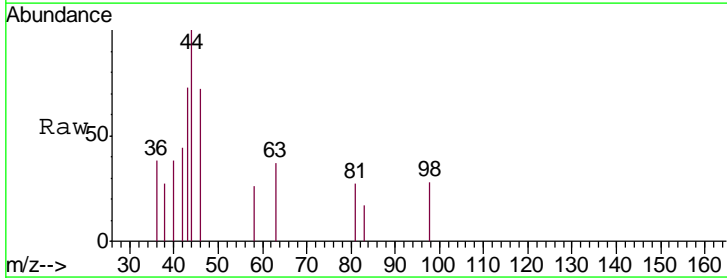
Instrument :  
 MSVOA\_U  
 ClientSampled :  
 C0C99DL

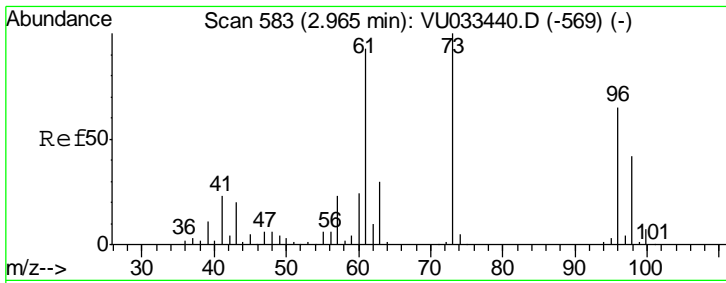
Tgt Ion: 96 Resp: 1506  
 Ion Ratio Lower Upper  
 96 100  
 61 1320.8 126.1 234.1#  
 63 10581.7 96.8 179.8#



#13  
 Acetone  
 Concen: 0.606 ug/L  
 RT: 2.31 min Scan# 378  
 Delta R.T. -0.00 min  
 Lab File: VU033453.D  
 Acq: 26 Jul 2019 15:10

Tgt Ion: 43 Resp: 919  
 Ion Ratio Lower Upper  
 43 100  
 58 12.3 0.0 65.4

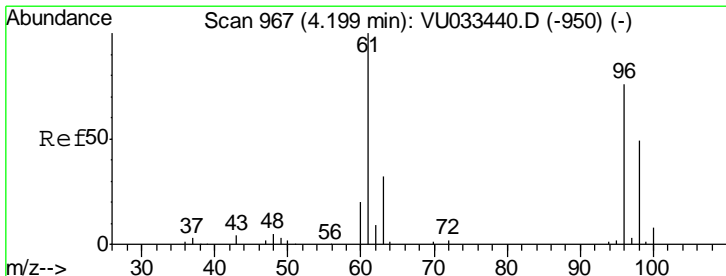
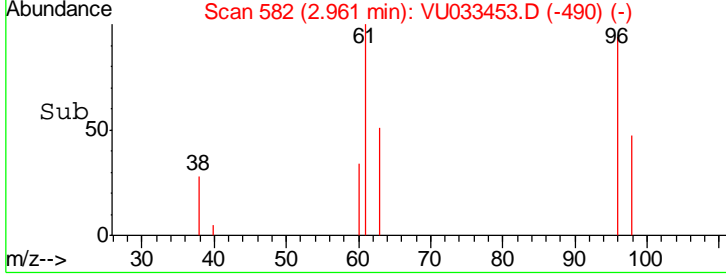
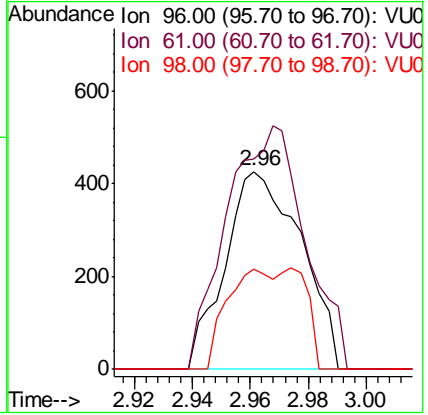
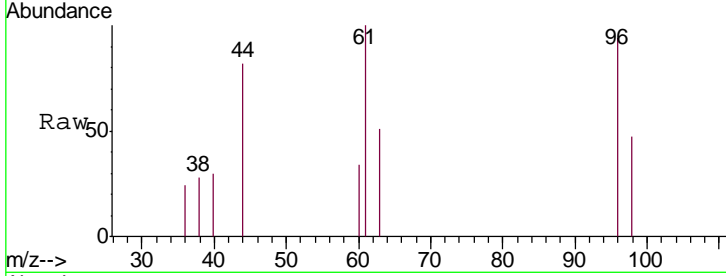




#17  
 trans-1,2-Dichloroethene  
 Concen: 0.443 ug/L  
 RT: 2.96 min Scan# 582  
 Delta R.T. -0.00 min  
 Lab File: VU033453.D  
 Acq: 26 Jul 2019 15:10

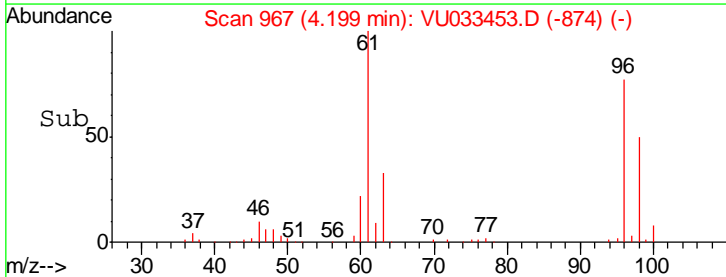
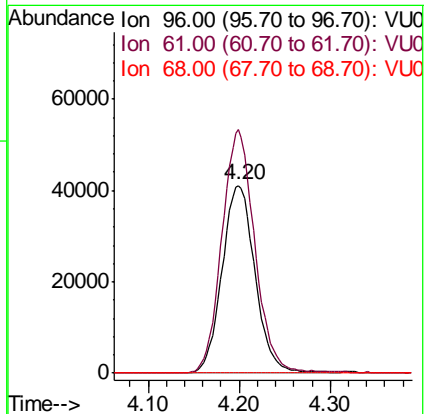
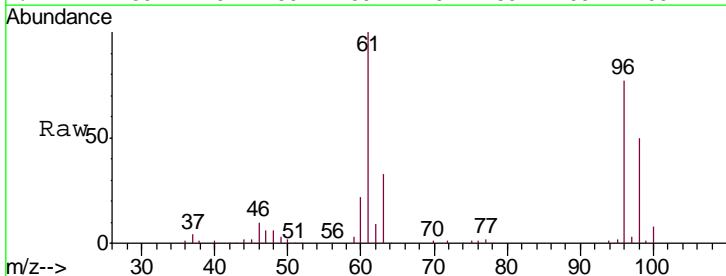
Instrument : MSVOA\_U  
 ClientSampled : C0C99DL

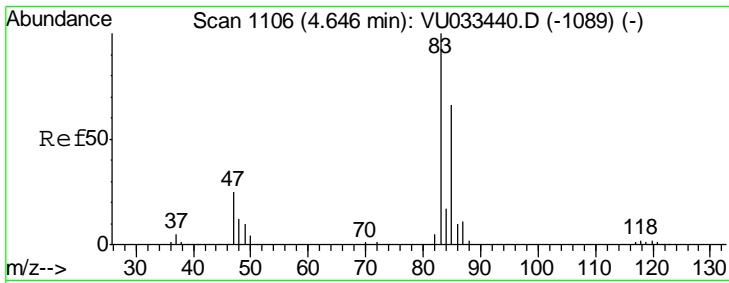
Tgt Ion	Resp	Lower	Upper
96	100		
61	106.6	100.2	186.2
98	50.5	44.2	82.0



#20  
 cis-1,2-Dichloroethene  
 Concen: 52.712 ug/L  
 RT: 4.20 min Scan# 967  
 Delta R.T. -0.00 min  
 Lab File: VU033453.D  
 Acq: 26 Jul 2019 15:10

Tgt Ion	Resp	Lower	Upper
96	100		
61	129.6	91.1	169.1
68	0.0	0.0	0.0

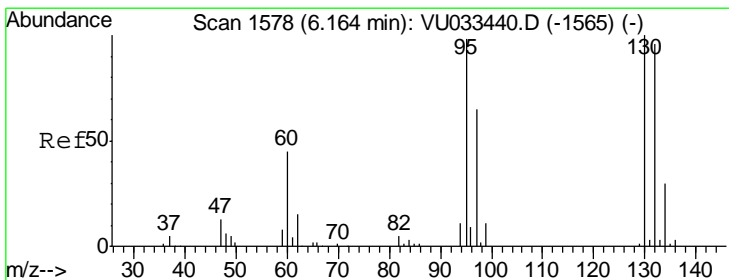
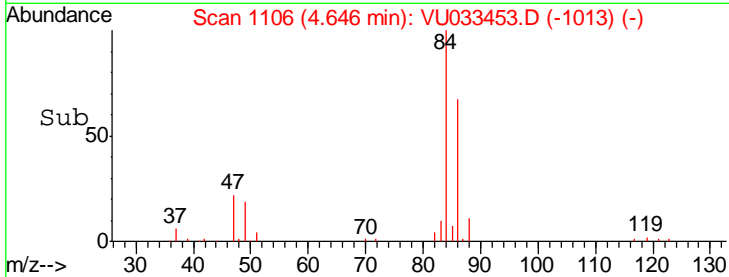
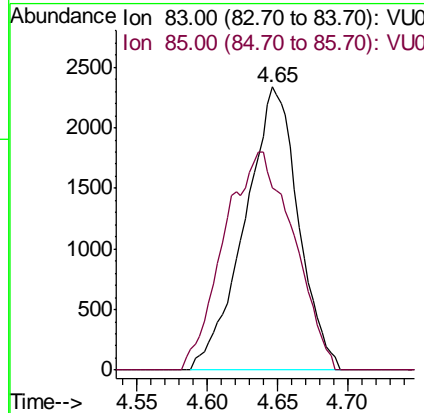
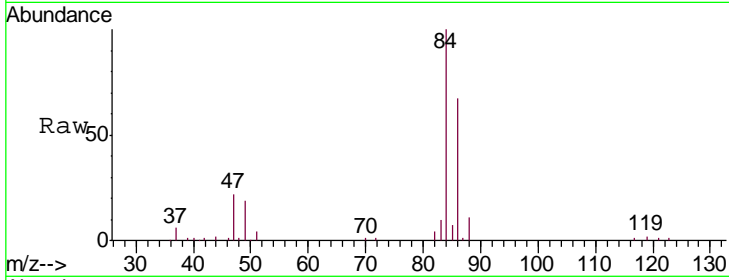




#25  
 Chloroform  
 Concen: 1.735 ug/L  
 RT: 4.65 min Scan# 1106  
 Delta R.T. -0.00 min  
 Lab File: VU033453.D  
 Acq: 26 Jul 2019 15:10

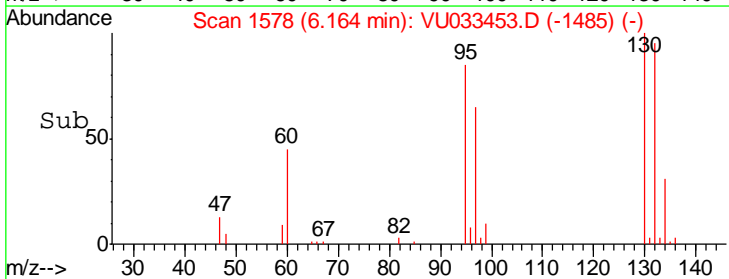
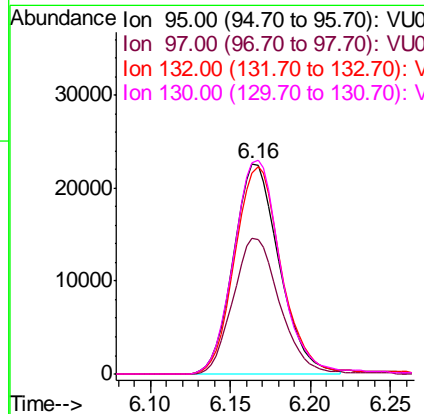
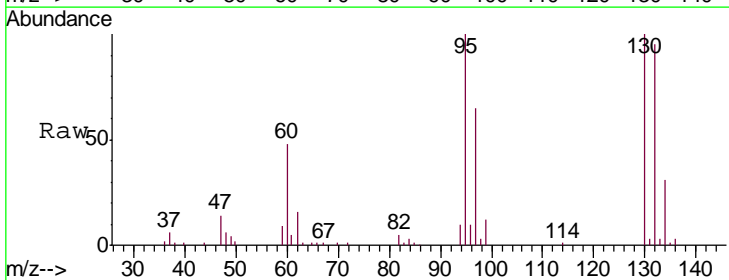
Instrument : MSVOA\_U  
 ClientSampled : C0C99DL

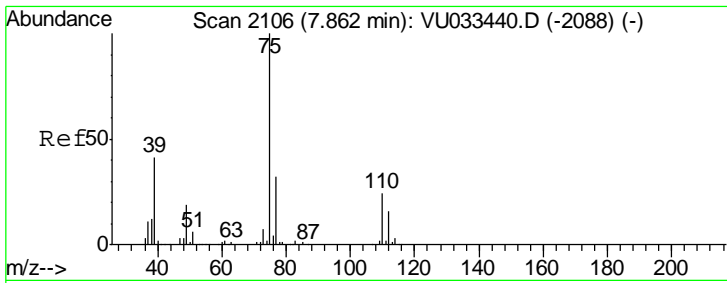
Tgt Ion	Resp	Lower	Upper
83	6190		
85	64.5	45.4	84.4



#34  
 Trichloroethene  
 Concen: 22.407 ug/L  
 RT: 6.16 min Scan# 1578  
 Delta R.T. -0.00 min  
 Lab File: VU033453.D  
 Acq: 26 Jul 2019 15:10

Tgt Ion	Resp	Lower	Upper
95	44230		
97	64.6	43.8	81.4
132	95.5	65.5	121.6
130	100.2	69.7	129.5

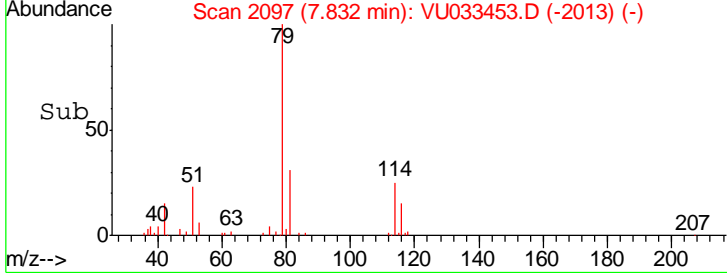
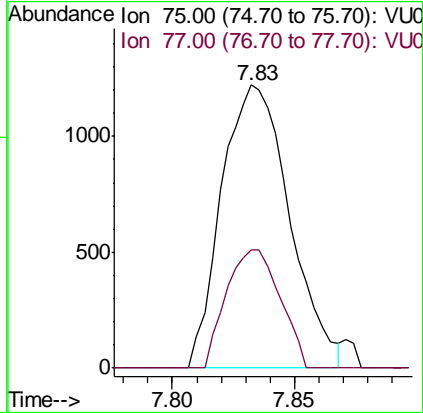
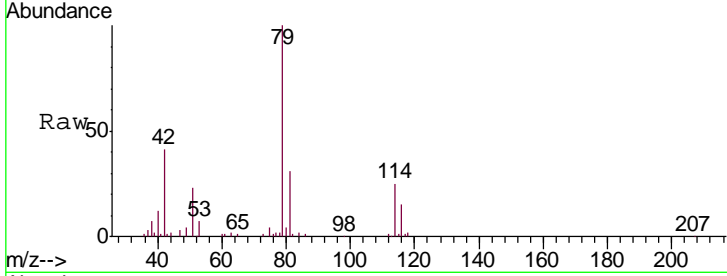




#44  
 trans-1,3-Dichloropropene  
 Concen: 0.834 ug/L  
 RT: 7.83 min Scan# 2097  
 Delta R.T. -0.03 min  
 Lab File: VU033453.D  
 Acq: 26 Jul 2019 15:10

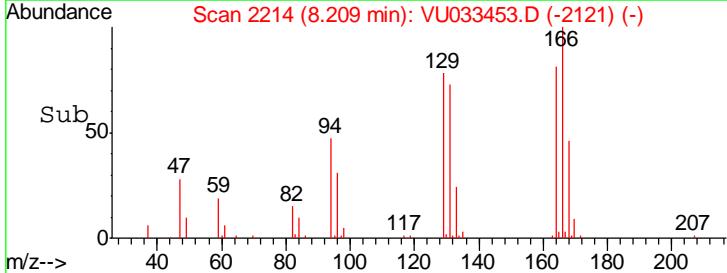
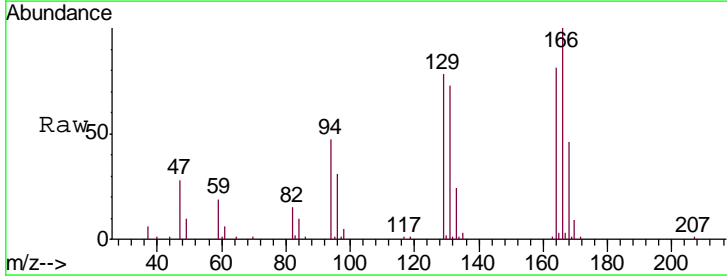
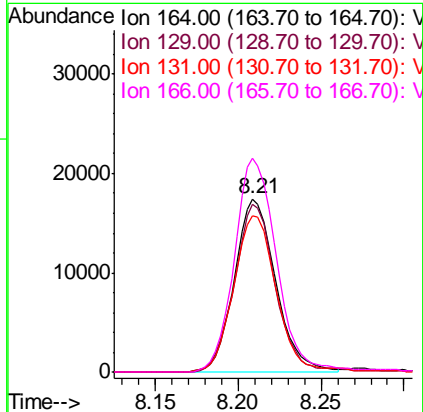
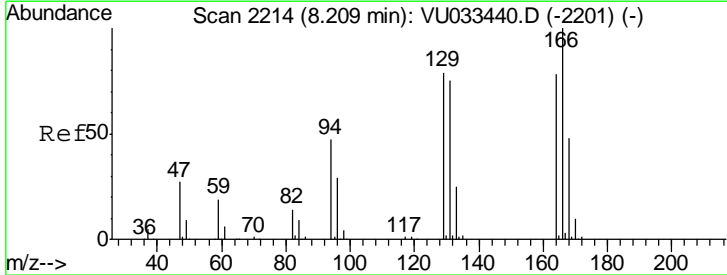
Instrument : MSVOA\_U  
 ClientSampled : C0C99DL

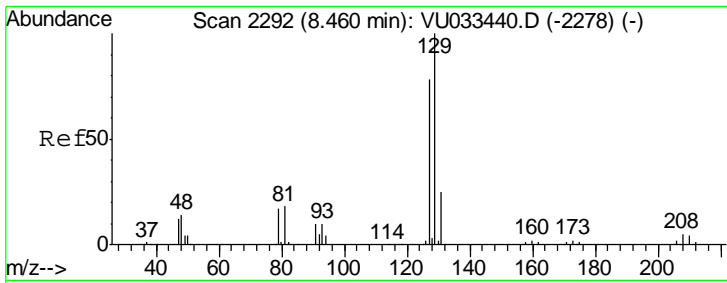
Tgt Ion: 75 Resp: 2361  
 Ion Ratio Lower Upper  
 75 100  
 77 41.6 22.4 41.6



#46  
 Tetrachloroethene  
 Concen: 19.699 ug/L  
 RT: 8.21 min Scan# 2214  
 Delta R.T. -0.00 min  
 Lab File: VU033453.D  
 Acq: 26 Jul 2019 15:10

Tgt Ion: 164 Resp: 30102  
 Ion Ratio Lower Upper  
 164 100  
 129 96.8 69.6 129.2  
 131 90.5 65.7 122.1  
 166 123.6 88.5 164.4

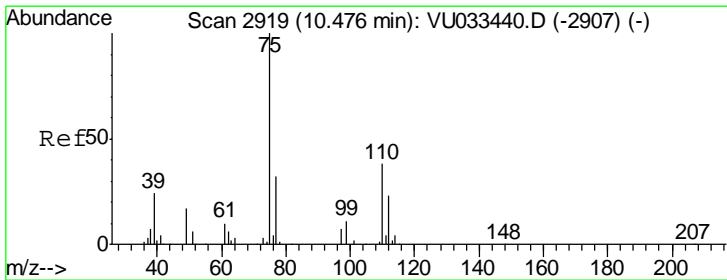
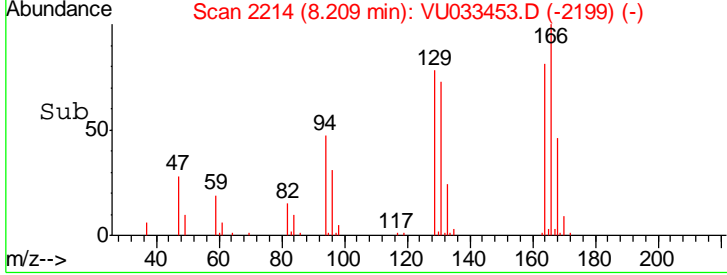
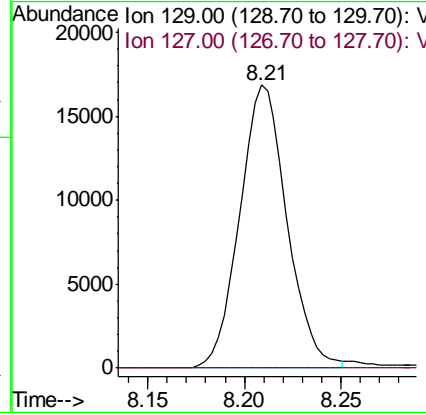
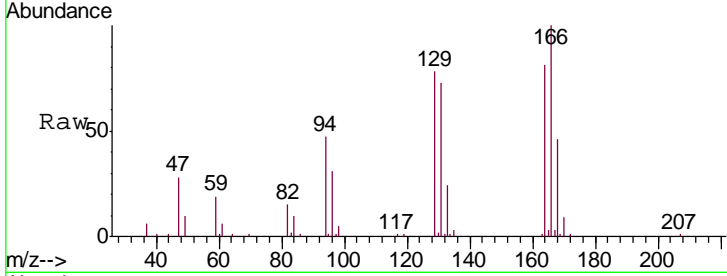




#49  
 Dibromochloromethane  
 Concen: 13.276 ug/L  
 RT: 8.21 min Scan# 2214  
 Delta R.T. -0.25 min  
 Lab File: VU033453.D  
 Acq: 26 Jul 2019 15:10

Instrument :  
 MSVOA\_U  
 ClientSampleID :  
 C0C99DL

Tgt Ion: 129 Resp: 28669  
 Ion Ratio Lower Upper  
 129 100  
 127 0.0 54.3 100.9#



#59  
 1,2,3-Trichloropropane  
 Concen: 5.113 ug/L  
 RT: 11.47 min Scan# 3228  
 Delta R.T. 0.99 min  
 Lab File: VU033453.D  
 Acq: 26 Jul 2019 15:10

Tgt Ion: 75 Resp: 13624  
 Ion Ratio Lower Upper  
 75 100  
 77 37.5 26.0 39.0

