

Data Path : Z:\voasrv\HPCHEM1\MSVOA_U\Data\VU072624\
 Data File : VU060222.D
 Acq On : 26 Jul 2024 14:23
 Operator : MD/SY
 Sample : VU0726WBL01
 Misc : 25.0mL/MSVOA_U/WATER
 ALS Vial : 4 Sample Multiplier: 1

Instrument :
 MSVOA_U
 ClientSampleId :

Quant Time: Jul 26 23:15:26 2024
 Quant Method : Z:\voasrv\HPCHEM1\MSVOA_U\Method\SFAMUTR071824WMA.M
 Quant Title : TRACE VOA SFAM1.0
 QLast Update : Fri Jul 26 23:14:26 2024
 Response via : Initial Calibration

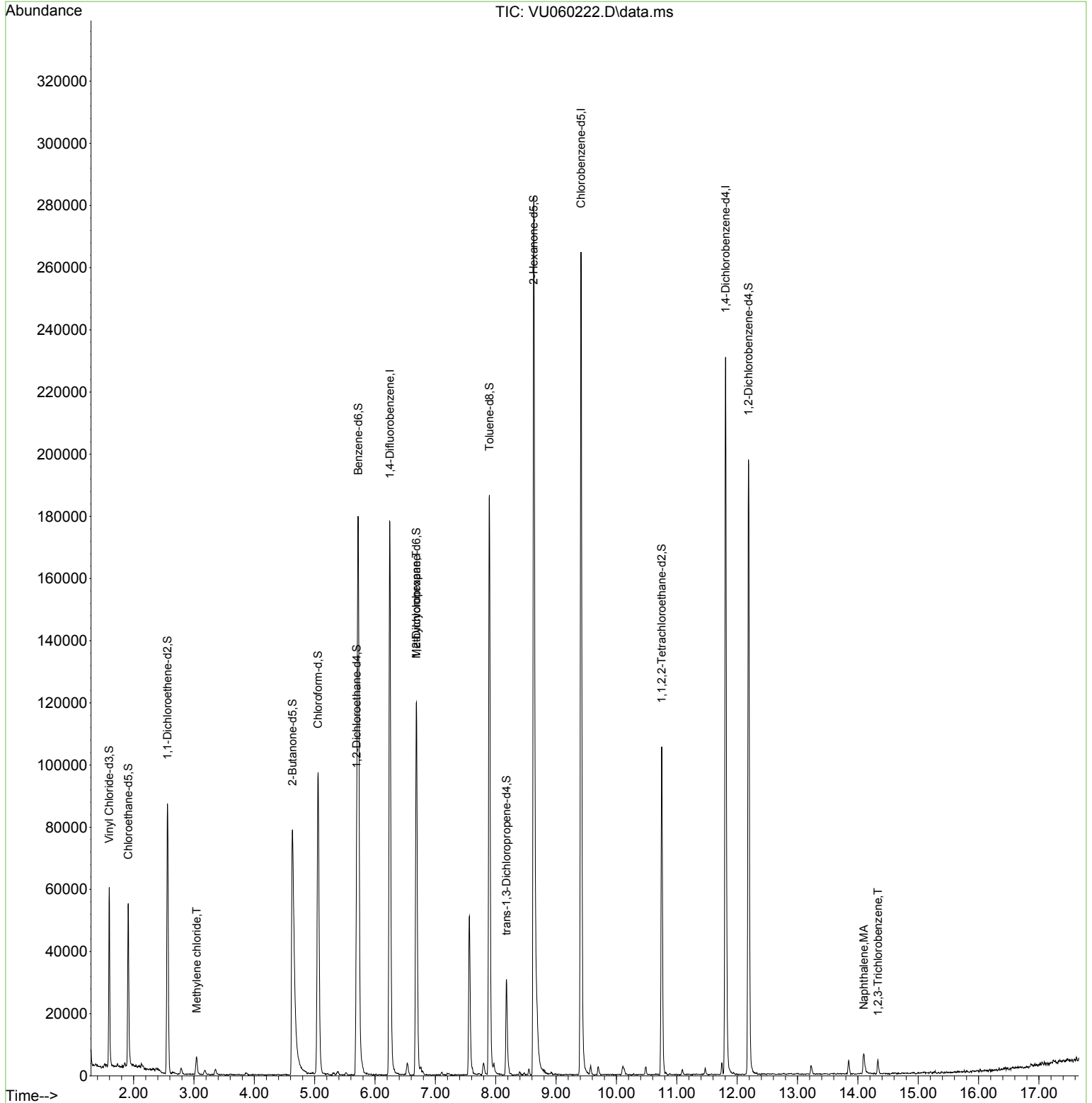
Compound	R.T.	QIon	Response	Conc	Units	Dev(Min)
Internal Standards						
1) 1,4-Difluorobenzene	6.245	114	154033	5.000	ug/L	0.00
28) Chlorobenzene-d5	9.412	117	157673	5.000	ug/L	0.00
58) 1,4-Dichlorobenzene-d4	11.807	152	67774	5.000	ug/L	0.00
System Monitoring Compounds						
4) Vinyl Chloride-d3	1.596	65	41850	3.905	ug/L	0.00
Spiked Amount	5.000	Range 40 - 130	Recovery	=	78.000%	
7) Chloroethane-d5	1.911	69	41332	4.151	ug/L	0.00
Spiked Amount	5.000	Range 65 - 130	Recovery	=	83.000%	
11) 1,1-Dichloroethene-d2	2.560	65	16389	3.917	ug/L	0.00
Spiked Amount	5.000	Range 60 - 125	Recovery	=	78.400%	
20) 2-Butanone-d5	4.631	46	151451	60.445	ug/L	0.00
Spiked Amount	50.000	Range 40 - 130	Recovery	=	120.900%	
24) Chloroform-d	5.055	84	94687	4.204	ug/L	0.00
Spiked Amount	5.000	Range 70 - 125	Recovery	=	84.000%	
26) 1,2-Dichloroethane-d4	5.695	65	46665	4.449	ug/L	0.00
Spiked Amount	5.000	Range 70 - 130	Recovery	=	89.000%	
32) Benzene-d6	5.721	84	173012	4.095	ug/L	0.00
Spiked Amount	5.000	Range 70 - 125	Recovery	=	82.000%	
36) 1,2-Dichloropropane-d6	6.685	67	64052	4.758	ug/L	0.00
Spiked Amount	5.000	Range 60 - 140	Recovery	=	95.200%	
41) Toluene-d8	7.894	98	134013	3.511	ug/L	0.00
Spiked Amount	5.000	Range 70 - 130	Recovery	=	70.200%	
43) trans-1,3-Dichloroprop...	8.177	79	20049	4.375	ug/L	0.00
Spiked Amount	5.000	Range 55 - 130	Recovery	=	87.600%	
46) 2-Hexanone-d5	8.627	63	106411	52.332	ug/L	0.00
Spiked Amount	50.000	Range 45 - 130	Recovery	=	104.660%	
56) 1,1,2,2-Tetrachloroeth...	10.750	84	57951	4.837	ug/L	0.00
Spiked Amount	5.000	Range 65 - 120	Recovery	=	96.800%	
66) 1,2-Dichlorobenzene-d4	12.187	152	55405	4.529	ug/L	0.00
Spiked Amount	5.000	Range 80 - 120	Recovery	=	90.600%	
Target Compounds						
16) Methylene chloride	3.042	84	2957	0.205	ug/L	81
35) Methylcyclohexane	6.685	83	13854	0.765	ug/L #	25
71) Naphthalene	14.097	128	9143	0.471	ug/L	95
72) 1,2,3-Trichlorobenzene	14.331	180	2124	0.172	ug/L	94

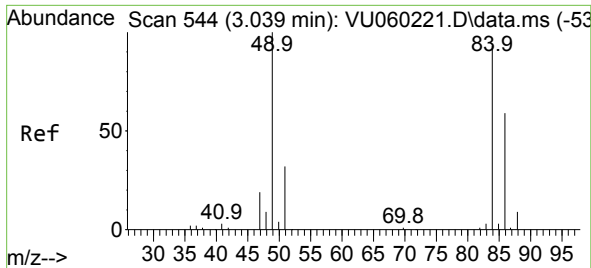
(#) = qualifier out of range (m) = manual integration (+) = signals summed

Data Path : Z:\voasrv\HPCHEM1\MSVOA_U\Data\VU072624\
 Data File : VU060222.D
 Acq On : 26 Jul 2024 14:23
 Operator : MD/SY
 Sample : VU0726WBL01
 Misc : 25.0mL/MSVOA_U/WATER
 ALS Vial : 4 Sample Multiplier: 1

Instrument :
 MSVOA_U
 ClientSampleId :

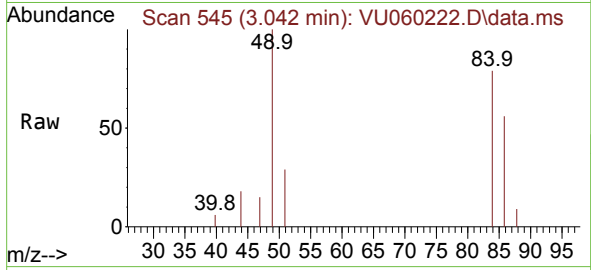
Quant Time: Jul 26 23:15:26 2024
 Quant Method : Z:\voasrv\HPCHEM1\MSVOA_U\Method\SFAMUTR071824WMA.M
 Quant Title : TRACE VOA SFAM1.0
 QLast Update : Fri Jul 26 23:14:26 2024
 Response via : Initial Calibration





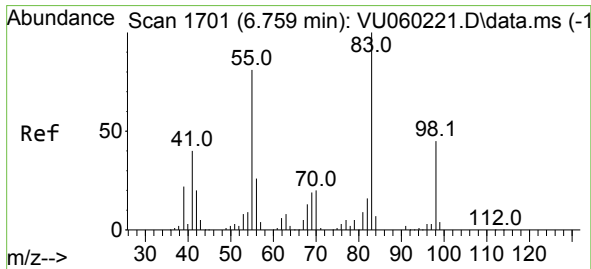
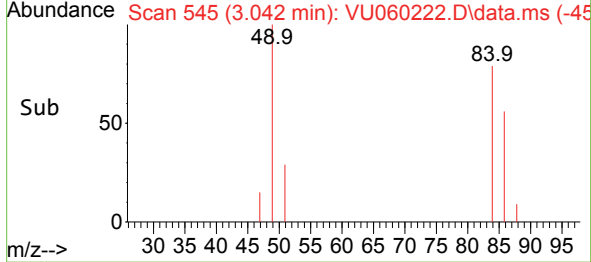
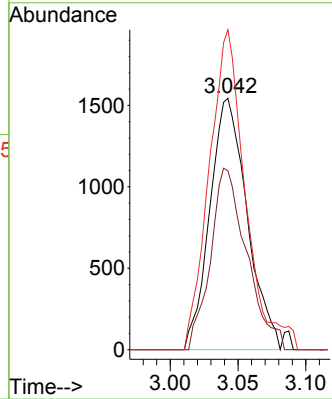
#16
 Methylene chloride
 Concen: 0.205 ug/L
 RT: 3.042 min Scan# 54
 Delta R.T. 0.003 min
 Lab File: VU060222.D
 Acq: 26 Jul 2024 14:23

Instrument :
 MSVOA_U
 ClientSampleId :



Tgt Ion: 84 Resp: 2957

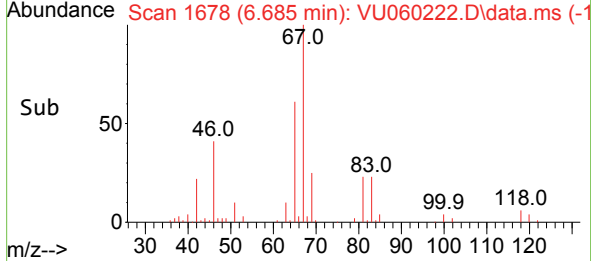
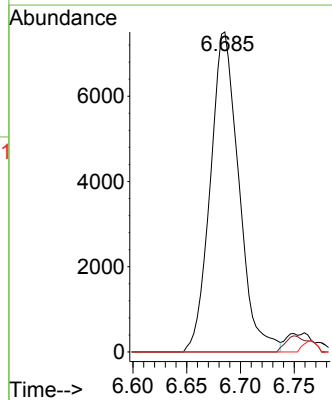
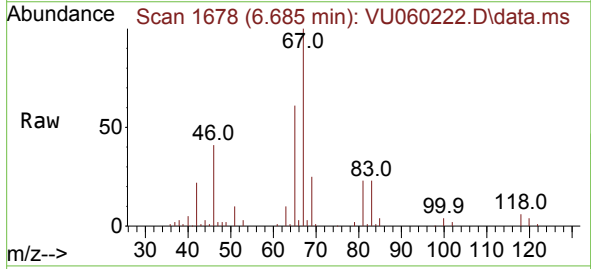
Ion	Ratio	Lower	Upper
84	100		
86	71.2	44.4	82.5
49	127.3	72.0	133.6

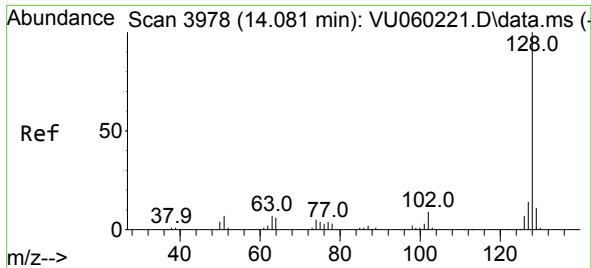


#35
 Methylcyclohexane
 Concen: 0.765 ug/L
 RT: 6.685 min Scan# 1678
 Delta R.T. -0.074 min
 Lab File: VU060222.D
 Acq: 26 Jul 2024 14:23

Tgt Ion: 83 Resp: 13854

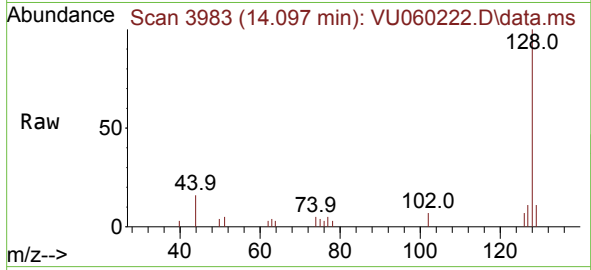
Ion	Ratio	Lower	Upper
83	100		
55	4.2	56.7	85.1#
98	1.6	36.6	55.0#



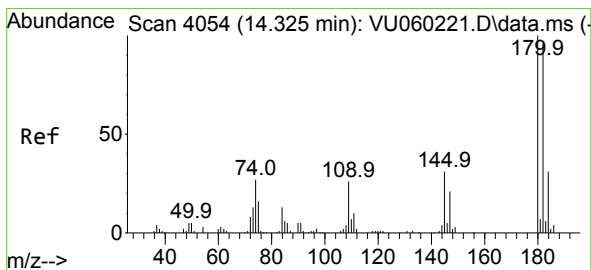
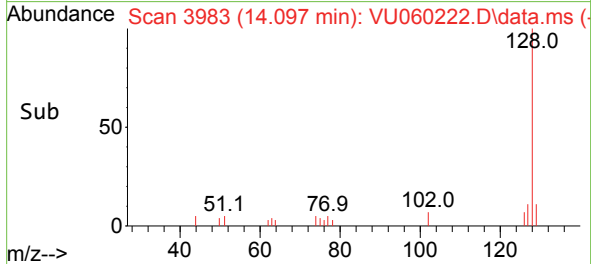
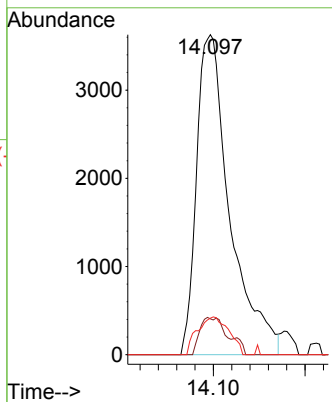


#71
 Naphthalene
 Concen: 0.471 ug/L
 RT: 14.097 min Scan# 3983
 Delta R.T. 0.016 min
 Lab File: VU060222.D
 Acq: 26 Jul 2024 14:23

Instrument : MSVOA_U
 ClientSampleId :



Tgt Ion:128 Resp: 9143
 Ion Ratio Lower Upper
 128 100
 129 8.5 8.2 12.4
 127 11.2 10.6 16.0



#72
 1,2,3-Trichlorobenzene
 Concen: 0.172 ug/L
 RT: 14.331 min Scan# 4056
 Delta R.T. 0.007 min
 Lab File: VU060222.D
 Acq: 26 Jul 2024 14:23

Tgt Ion:180 Resp: 2124
 Ion Ratio Lower Upper
 180 100
 182 87.8 76.3 114.5
 145 30.4 23.9 35.9

