

Data Path : Z:\voasrv\HPCHEM1\MSVOA\_U\Data\VU072822\  
 Data File : VU049994.D  
 Acq On : 28 Jul 2022 18:50  
 Operator : SY/MD  
 Sample : N3922-12  
 Misc : 25.0mL/MSVOA\_U/WATER  
 ALS Vial : 17 Sample Multiplier: 1

**Instrument :**  
 MSVOA\_U  
**ClientSampleId :**  
 C0C94

Quant Time: Jul 29 02:39:09 2022  
 Quant Method : Z:\voasrv\HPCHEM1\MSVOA\_U\Method\SFAMUTR072722WMA.M  
 Quant Title : TRACE VOA SFAM1.0  
 QLast Update : Fri Jul 29 02:27:55 2022  
 Response via : Initial Calibration

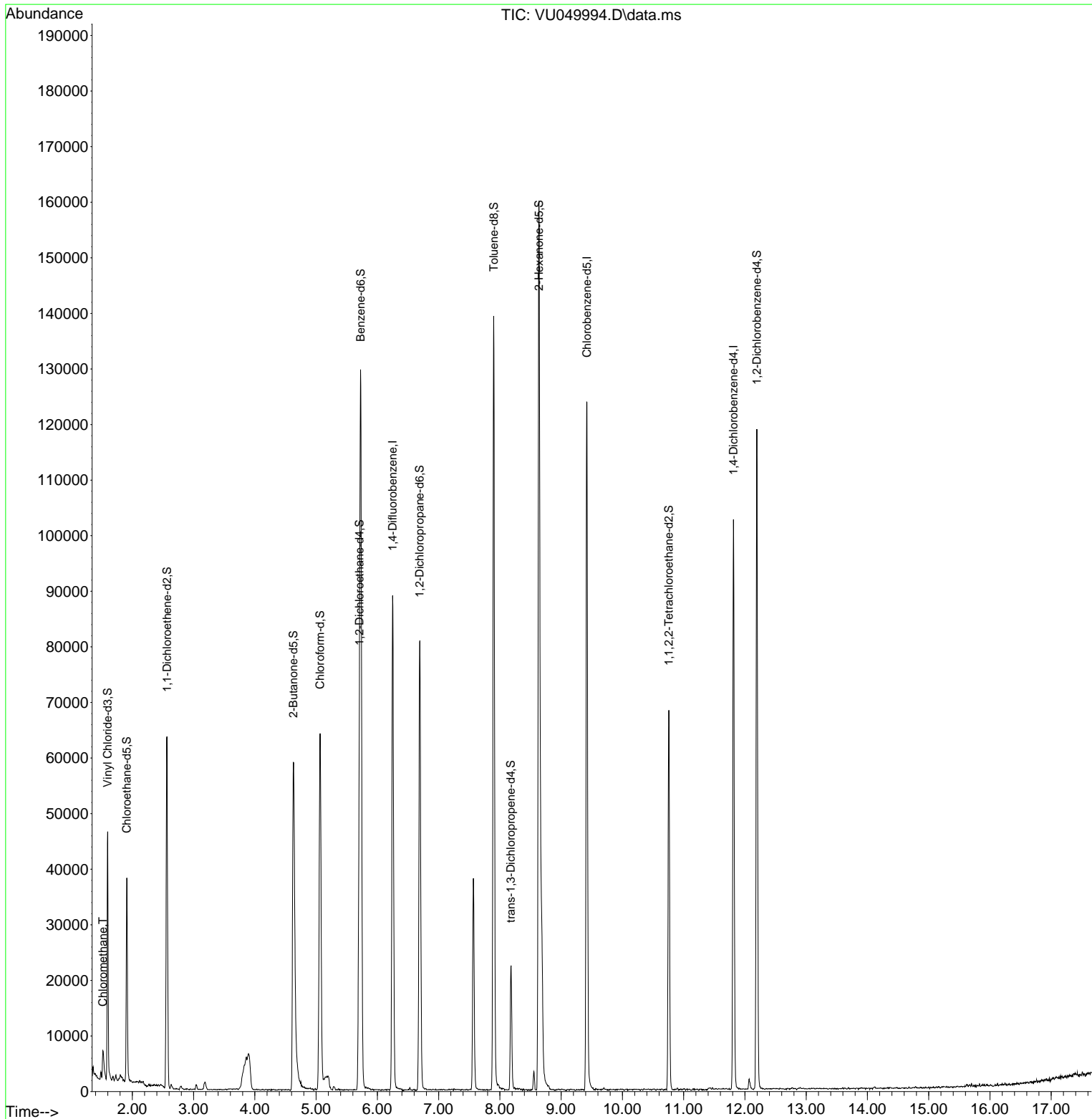
Compound	R.T.	QIon	Response	Conc	Units	Dev(Min)
-----						
Internal Standards						
1) 1,4-Difluorobenzene	6.250	114	73189	5.000	ug/L	0.00
28) Chlorobenzene-d5	9.420	117	72866	5.000	ug/L	0.00
58) 1,4-Dichlorobenzene-d4	11.812	152	28532	5.000	ug/L	0.00
System Monitoring Compounds						
4) Vinyl Chloride-d3	1.597	65	32209	5.126	ug/L	0.00
Spiked Amount	5.000	Range 40 - 130	Recovery	=	102.600%	
7) Chloroethane-d5	1.909	69	26927	5.966	ug/L	0.00
Spiked Amount	5.000	Range 65 - 130	Recovery	=	119.400%	
11) 1,1-Dichloroethene-d2	2.565	65	11752	5.426	ug/L	0.00
Spiked Amount	5.000	Range 60 - 125	Recovery	=	108.600%	
20) 2-Butanone-d5	4.629	46	88582	63.325	ug/L	-0.04
Spiked Amount	50.000	Range 40 - 130	Recovery	=	126.640%	
24) Chloroform-d	5.063	84	62164	5.978	ug/L	0.00
Spiked Amount	5.000	Range 70 - 125	Recovery	=	119.600%	
26) 1,2-Dichloroethane-d4	5.706	65	32492	6.201	ug/L	0.00
Spiked Amount	5.000	Range 70 - 130	Recovery	=	124.000%	
32) Benzene-d6	5.729	84	121887	5.661	ug/L	0.00
Spiked Amount	5.000	Range 70 - 125	Recovery	=	113.200%	
36) 1,2-Dichloropropane-d6	6.690	67	42507	6.026	ug/L	0.00
Spiked Amount	5.000	Range 60 - 140	Recovery	=	120.600%	
41) Toluene-d8	7.899	98	97903	5.116	ug/L	0.00
Spiked Amount	5.000	Range 70 - 130	Recovery	=	102.400%	
43) trans-1,3-Dichloroprop...	8.179	79	13906	5.625	ug/L	0.00
Spiked Amount	5.000	Range 55 - 130	Recovery	=	112.400%	
46) 2-Hexanone-d5	8.636	63	51217	55.341	ug/L	0.00
Spiked Amount	50.000	Range 45 - 130	Recovery	=	110.680%	
56) 1,1,2,2-Tetrachloroeth...	10.758	84	36146	6.099	ug/L	0.00
Spiked Amount	5.000	Range 65 - 120	Recovery	=	122.000%#	
66) 1,2-Dichlorobenzene-d4	12.195	152	33131	6.260	ug/L	0.00
Spiked Amount	5.000	Range 80 - 120	Recovery	=	125.200%#	
-----						
Target Compounds						Qvalue
3) Chloromethane	1.520	50	5499	0.822	ug/L	100
-----						

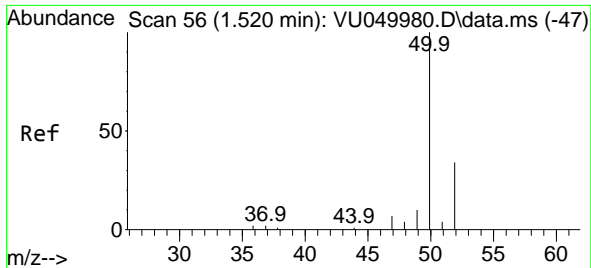
(#) = qualifier out of range (m) = manual integration (+) = signals summed

Data Path : Z:\voasrv\HPCHEM1\MSVOA\_U\Data\VU072822\  
 Data File : VU049994.D  
 Acq On : 28 Jul 2022 18:50  
 Operator : SY/MD  
 Sample : N3922-12  
 Misc : 25.0mL/MSVOA\_U/WATER  
 ALS Vial : 17 Sample Multiplier: 1

Instrument :  
 MSVOA\_U  
 ClientSampleId :  
 C0C94

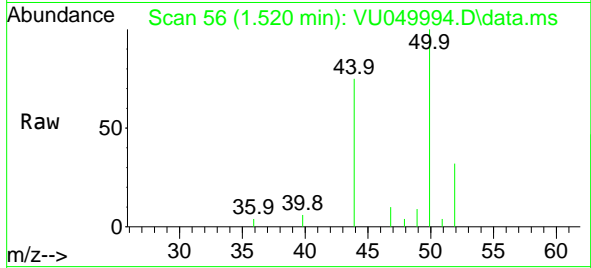
Quant Time: Jul 29 02:39:09 2022  
 Quant Method : Z:\voasrv\HPCHEM1\MSVOA\_U\Method\SFAMUTR072722WMA.M  
 Quant Title : TRACE VOA SFAM1.0  
 QLast Update : Fri Jul 29 02:27:55 2022  
 Response via : Initial Calibration





#3  
 Chloromethane  
 Concen: 0.822 ug/L  
 RT: 1.520 min Scan# 50  
 Delta R.T. 0.000 min  
 Lab File: VU049994.D  
 Acq: 28 Jul 2022 18:50

Instrument :  
 MSVOA\_U  
 ClientSampleId :  
 C0C94



Tgt Ion: 50 Resp: 5499  
 Ion Ratio Lower Upper  
 50 100  
 52 31.9 22.4 41.6

