

Data Path : Z:\voasrv\HPCHEM1\MSVOA_U\Data\VU072922\
 Data File : VU050035.D
 Acq On : 29 Jul 2022 14:41
 Operator : SY/MD
 Sample : N3890-04
 Misc : 5.0mL/MSVOA_U/WATER
 ALS Vial : 13 Sample Multiplier: 1

Instrument :
 MSVOA_U
 ClientSampleId :
 YBEA4

Quant Time: Jul 30 01:43:01 2022
 Quant Method : Z:\voasrv\HPCHEM1\MSVOA_U\Method\SFAMUTR072722WMA.M
 Quant Title : TRACE VOA SFAM1.0
 QLast Update : Sat Jul 30 01:40:38 2022
 Response via : Initial Calibration

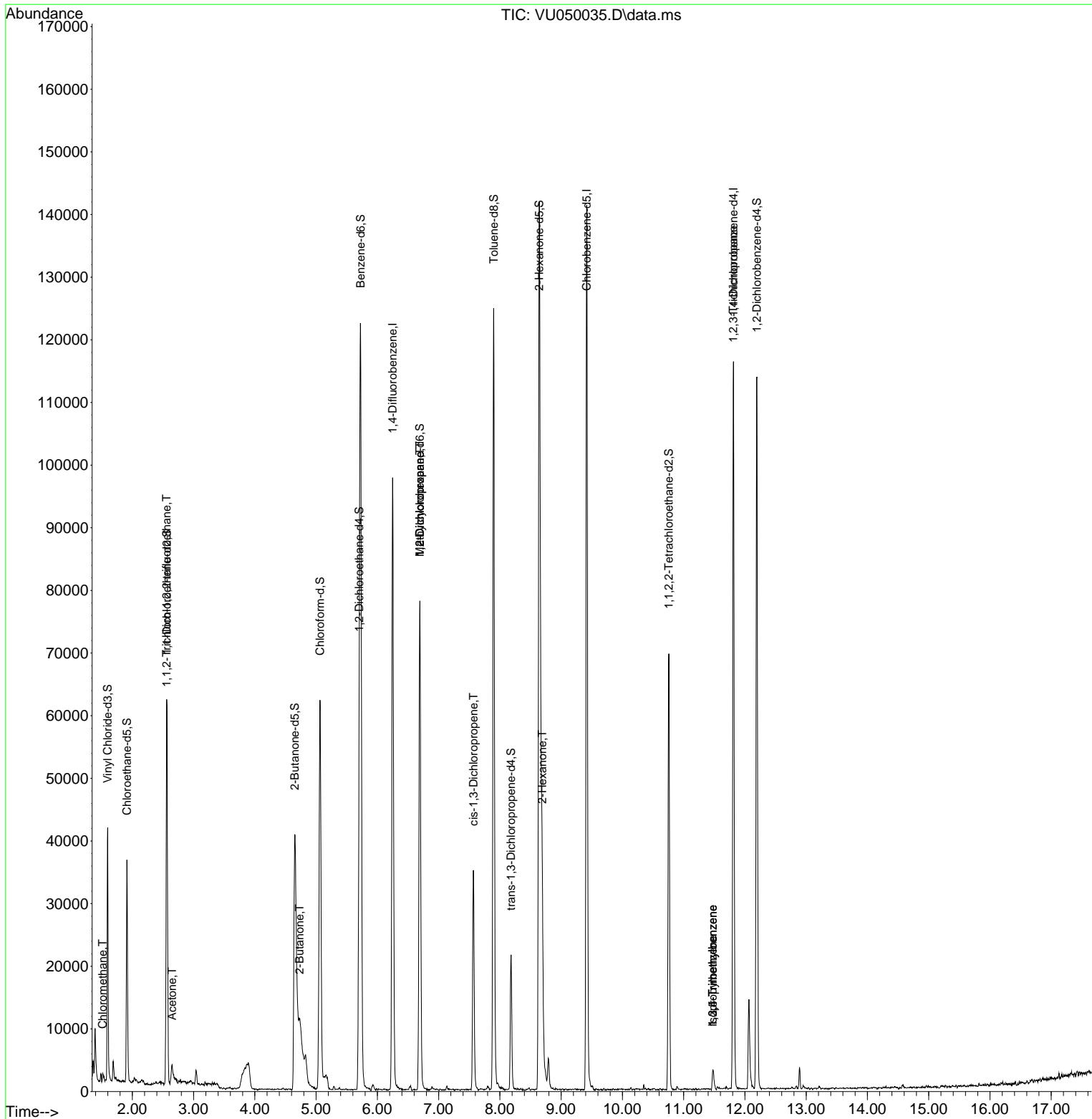
Compound	R.T.	QIon	Response	Conc	Units	Dev(Min)
Internal Standards						
1) 1,4-Difluorobenzene	6.250	114	81399	5.000	ug/L	0.00
28) Chlorobenzene-d5	9.417	117	82454	5.000	ug/L	0.00
58) 1,4-Dichlorobenzene-d4	11.812	152	32045	5.000	ug/L	0.00
System Monitoring Compounds						
4) Vinyl Chloride-d3	1.597	65	28796	4.120	ug/L	0.00
Spiked Amount	5.000	Range 40 - 130	Recovery	=	82.400%	
7) Chloroethane-d5	1.912	69	25607	5.101	ug/L	0.00
Spiked Amount	5.000	Range 65 - 130	Recovery	=	102.000%	
11) 1,1-Dichloroethene-d2	2.562	65	11283	4.684	ug/L	0.00
Spiked Amount	5.000	Range 60 - 125	Recovery	=	93.600%	
20) 2-Butanone-d5	4.652	46	79041	50.805	ug/L	0.01
Spiked Amount	50.000	Range 40 - 130	Recovery	=	101.620%	
24) Chloroform-d	5.063	84	58951	5.097	ug/L	0.00
Spiked Amount	5.000	Range 70 - 125	Recovery	=	102.000%	
26) 1,2-Dichloroethane-d4	5.703	65	31305	5.372	ug/L	0.00
Spiked Amount	5.000	Range 70 - 130	Recovery	=	107.400%	
32) Benzene-d6	5.726	84	111816	4.589	ug/L	0.00
Spiked Amount	5.000	Range 70 - 125	Recovery	=	91.800%	
36) 1,2-Dichloropropane-d6	6.693	67	39623	4.964	ug/L	0.00
Spiked Amount	5.000	Range 60 - 140	Recovery	=	99.200%	
41) Toluene-d8	7.899	98	87883	4.058	ug/L	0.00
Spiked Amount	5.000	Range 70 - 130	Recovery	=	81.200%	
43) trans-1,3-Dichloroprop...	8.182	79	13615	4.867	ug/L	0.00
Spiked Amount	5.000	Range 55 - 130	Recovery	=	97.400%	
46) 2-Hexanone-d5	8.642	63	48731	46.532	ug/L	0.00
Spiked Amount	50.000	Range 45 - 130	Recovery	=	93.060%	
56) 1,1,2,2-Tetrachloroeth...	10.758	84	36495	5.442	ug/L	0.00
Spiked Amount	5.000	Range 65 - 120	Recovery	=	108.800%	
66) 1,2-Dichlorobenzene-d4	12.195	152	31618	5.320	ug/L	0.00
Spiked Amount	5.000	Range 80 - 120	Recovery	=	106.400%	
Target Compounds						
3) Chloromethane	1.517	50	1019	0.137	ug/L	97
10) 1,1,2-Trichloro-1,2,2-...	2.559	101	290	0.060	ug/L #	21
13) Acetone	2.649	43	4789	4.379	ug/L	90
21) 2-Butanone	4.732	43	8023	5.094	ug/L	97
35) Methylcyclohexane	6.693	83	8596	1.114	ug/L #	19
37) 1,2-Dichloropropane	6.693	63	3912	0.590	ug/L #	88
39) cis-1,3-Dichloropropene	7.568	75	929	0.108	ug/L #	79
48) 2-Hexanone	8.690	43	19985	6.841	ug/L #	92
60) Isopropylbenzene	11.475	105	1611	0.085	ug/L #	1
61) 1,2,3-Trichloropropane	11.809	75	3651	0.981	ug/L #	66
62) 1,3,5-Trimethylbenzene	11.475	105	1611	0.105	ug/L #	29
63) 1,2,4-Trimethylbenzene	11.475	105	1611	0.108	ug/L #	32

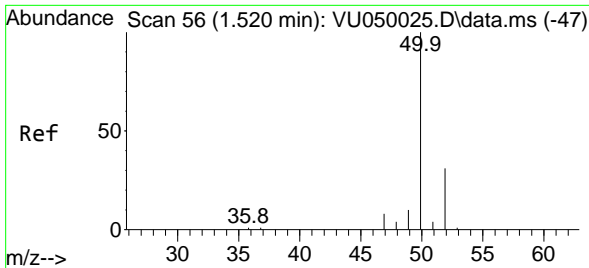
(#) = qualifier out of range (m) = manual integration (+) = signals summed

Data Path : Z:\voasrv\HPCHEM1\MSVOA_U\Data\VU072922\
 Data File : VU050035.D
 Acq On : 29 Jul 2022 14:41
 Operator : SY/MD
 Sample : N3890-04
 Misc : 5.0mL/MSVOA_U/WATER
 ALS Vial : 13 Sample Multiplier: 1

Instrument :
 MSVOA_U
 ClientSampleId :
 YBEA4

Quant Time: Jul 30 01:43:01 2022
 Quant Method : Z:\voasrv\HPCHEM1\MSVOA_U\Method\SFAMUTR072722WMA.M
 Quant Title : TRACE VOA SFAM1.0
 QLast Update : Sat Jul 30 01:40:38 2022
 Response via : Initial Calibration

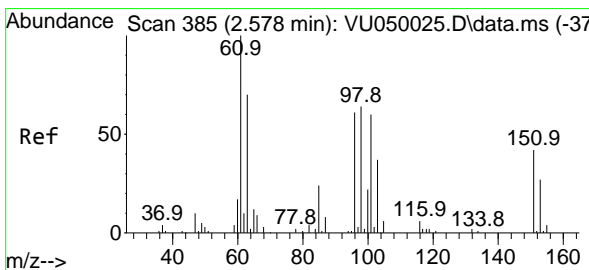
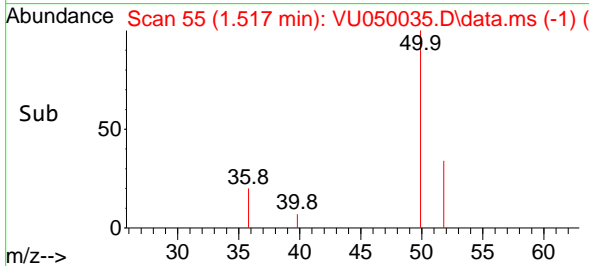
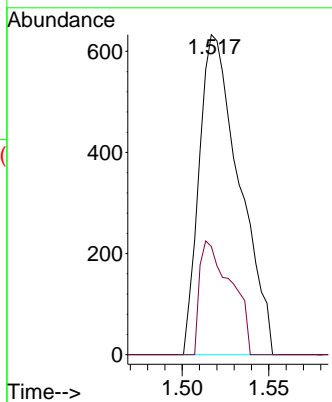
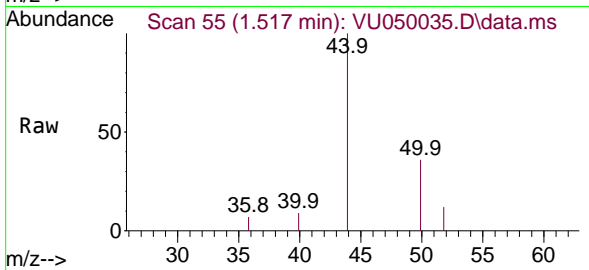




#3
 Chloromethane
 Concen: 0.137 ug/L
 RT: 1.517 min Scan# 51
 Delta R.T. -0.003 min
 Lab File: VU050035.D
 Acq: 29 Jul 2022 14:41

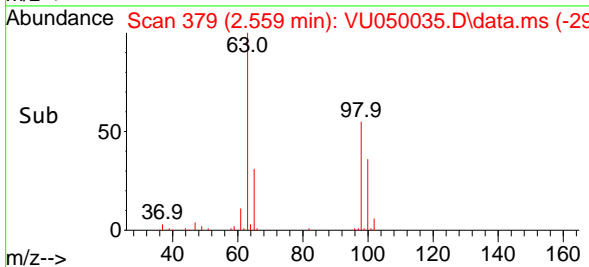
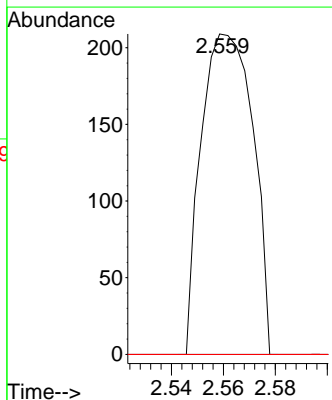
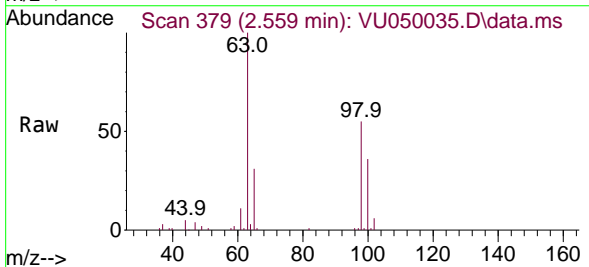
Instrument :
 MSVOA_U
 ClientSampleId :
 YBEA4

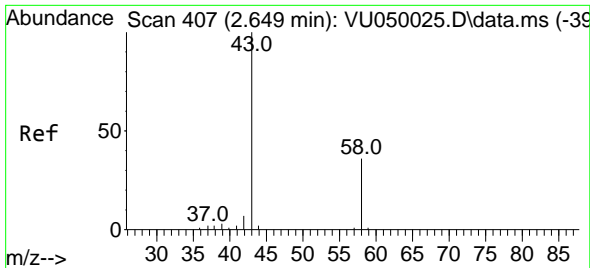
Tgt Ion: 50 Resp: 1019
 Ion Ratio Lower Upper
 50 100
 52 33.8 22.4 41.6



#10
 1,1,2-Trichloro-1,2,2-trifluoroethane
 Concen: 0.060 ug/L
 RT: 2.559 min Scan# 379
 Delta R.T. -0.020 min
 Lab File: VU050035.D
 Acq: 29 Jul 2022 14:41

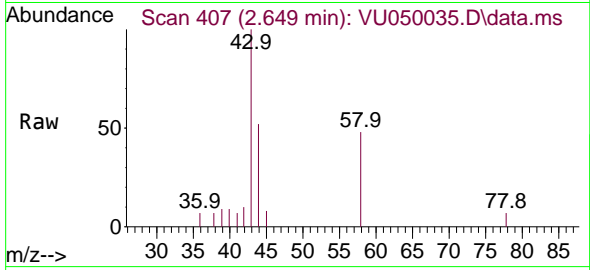
Tgt Ion:101 Resp: 290
 Ion Ratio Lower Upper
 101 100
 85 0.0 34.1 51.1#
 151 0.0 56.6 85.0#



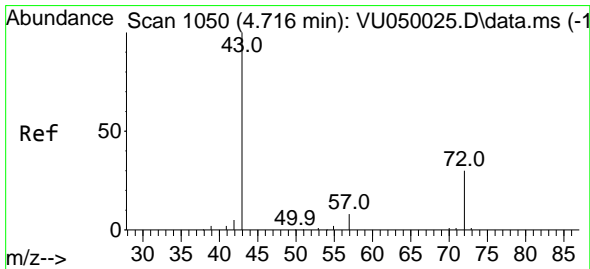
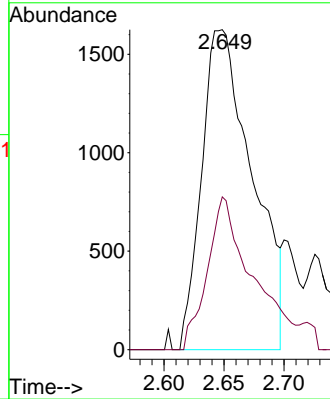
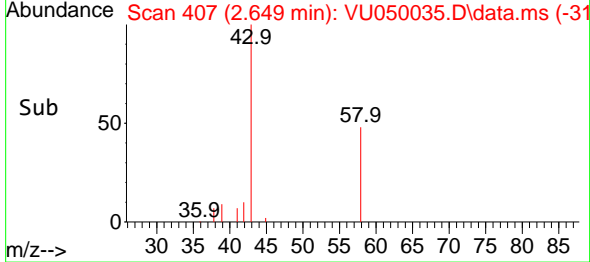


#13
 Acetone
 Concen: 4.379 ug/L
 RT: 2.649 min Scan# 407
 Delta R.T. -0.000 min
 Lab File: VU050035.D
 Acq: 29 Jul 2022 14:41

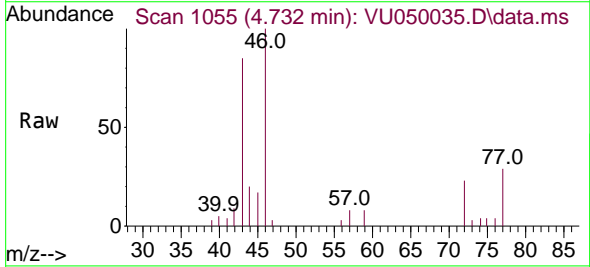
Instrument : MSVOA_U
 ClientSampleId : YBEA4



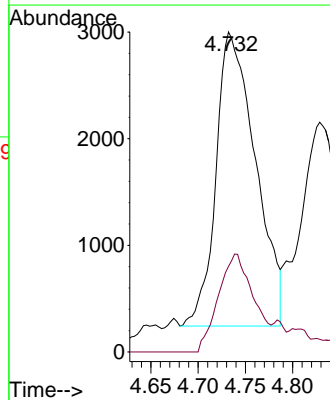
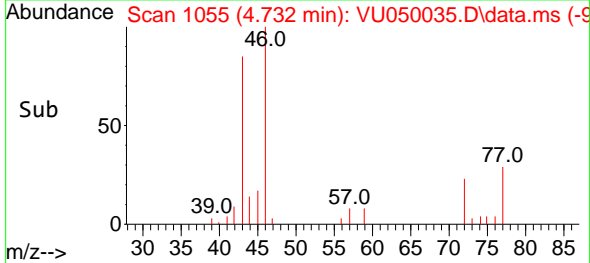
Tgt Ion: 43 Resp: 4789
 Ion Ratio Lower Upper
 43 100
 58 42.3 0.0 73.0

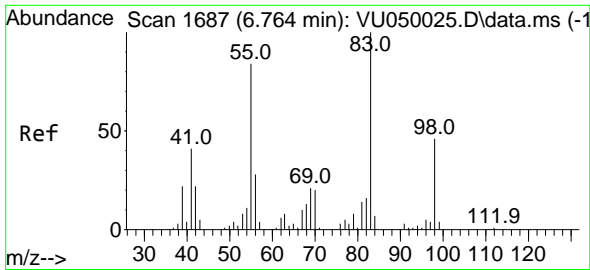


#21
 2-Butanone
 Concen: 5.094 ug/L
 RT: 4.732 min Scan# 1055
 Delta R.T. 0.016 min
 Lab File: VU050035.D
 Acq: 29 Jul 2022 14:41



Tgt Ion: 43 Resp: 8023
 Ion Ratio Lower Upper
 43 100
 72 29.9 15.8 47.3

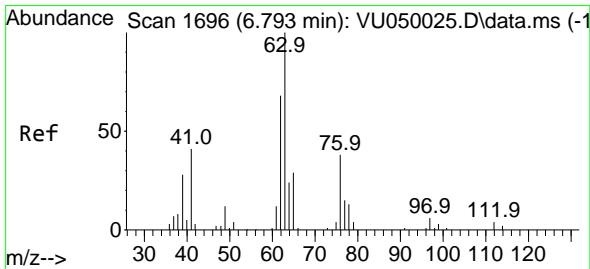
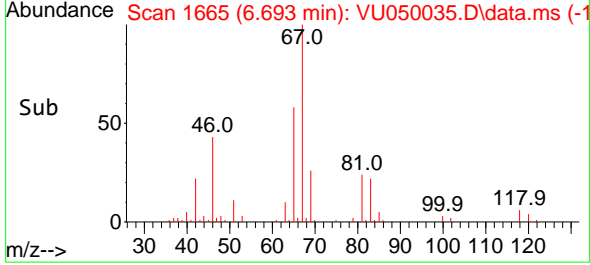
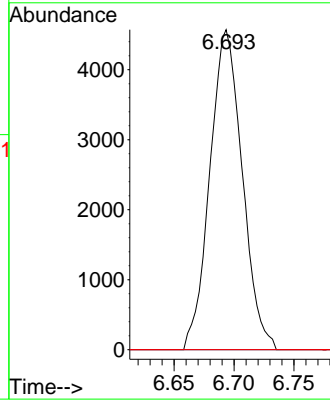
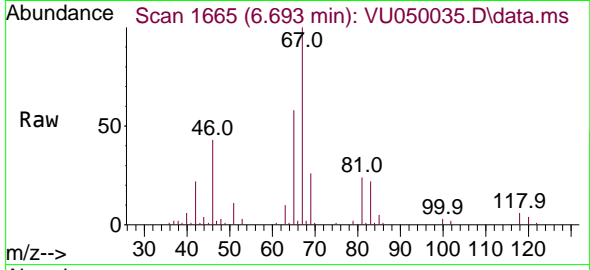




#35
 Methylcyclohexane
 Concen: 1.114 ug/L
 RT: 6.693 min Scan# 1665
 Delta R.T. -0.071 min
 Lab File: VU050035.D
 Acq: 29 Jul 2022 14:41

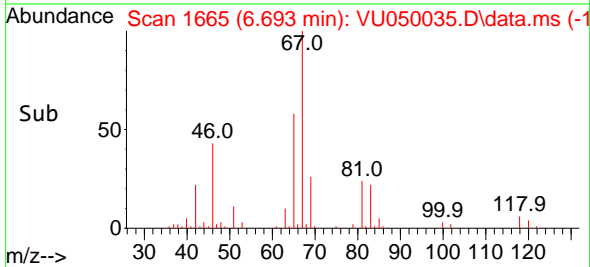
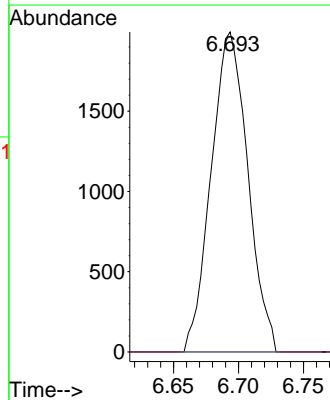
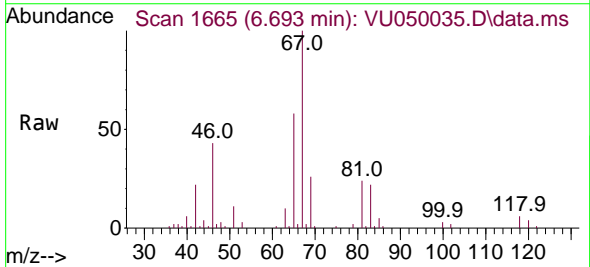
Instrument : MSVOA_U
 ClientSampleId : YBEA4

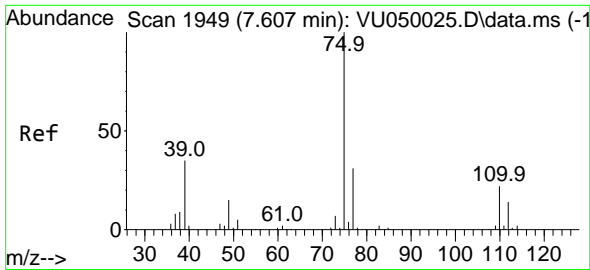
Tgt Ion: 83 Resp: 8596
 Ion Ratio Lower Upper
 83 100
 55 0.0 61.6 92.4#
 98 0.0 34.8 52.2#



#37
 1,2-Dichloropropane
 Concen: 0.590 ug/L
 RT: 6.693 min Scan# 1665
 Delta R.T. -0.100 min
 Lab File: VU050035.D
 Acq: 29 Jul 2022 14:41

Tgt Ion: 63 Resp: 3912
 Ion Ratio Lower Upper
 63 100
 112 0.0 3.0 4.6#

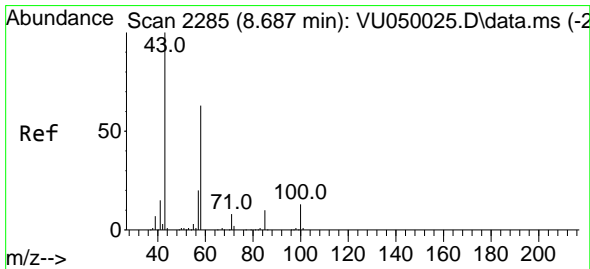
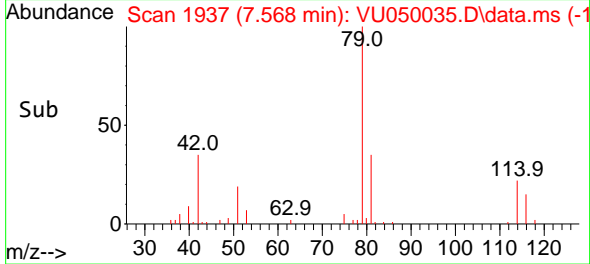
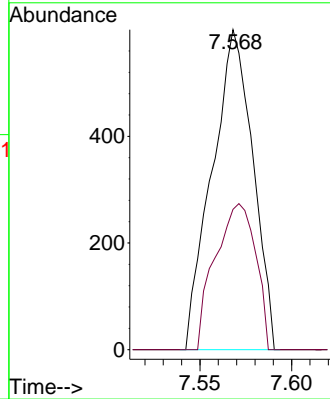
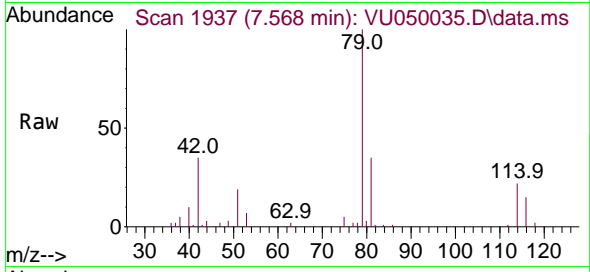




#39
 cis-1,3-Dichloropropene
 Concen: 0.108 ug/L
 RT: 7.568 min Scan# 1949
 Delta R.T. -0.039 min
 Lab File: VU050035.D
 Acq: 29 Jul 2022 14:41

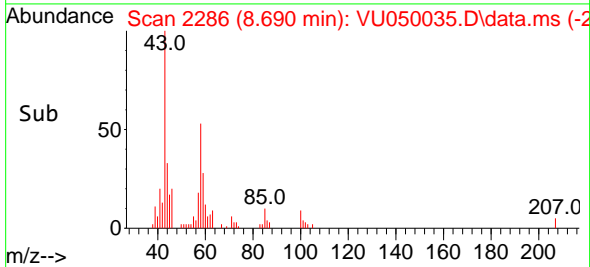
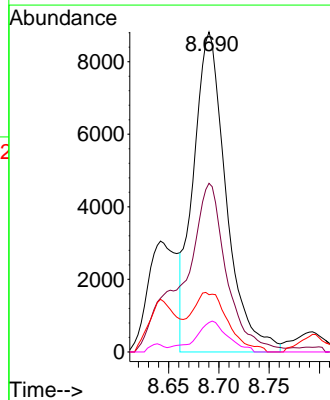
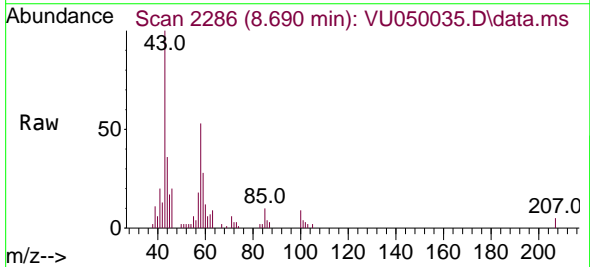
Instrument : MSVOA_U
 ClientSampleId : YBEA4

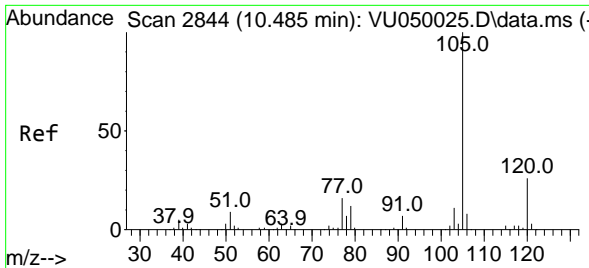
Tgt Ion: 75 Resp: 929
 Ion Ratio Lower Upper
 75 100
 77 43.8 22.5 41.9#



#48
 2-Hexanone
 Concen: 6.841 ug/L
 RT: 8.690 min Scan# 2286
 Delta R.T. 0.003 min
 Lab File: VU050035.D
 Acq: 29 Jul 2022 14:41

Tgt Ion: 43 Resp: 19985
 Ion Ratio Lower Upper
 43 100
 58 70.2 49.4 74.0
 57 20.5 17.0 25.4
 100 9.6 10.2 15.2#

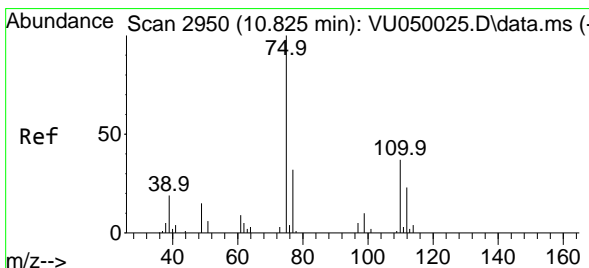
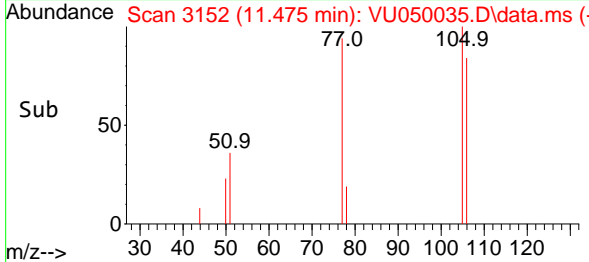
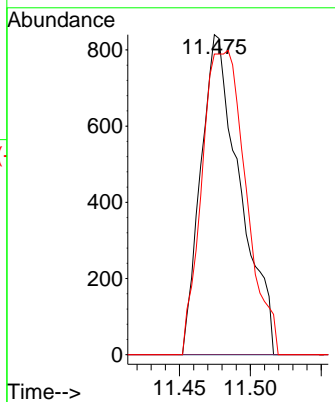
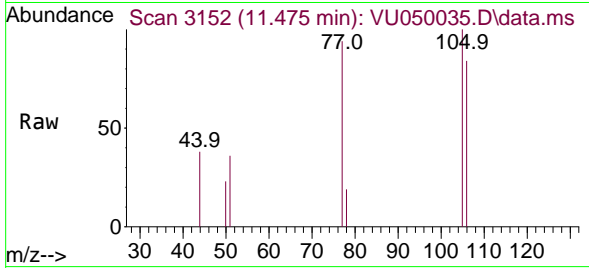




#60
 Isopropylbenzene
 Concen: 0.085 ug/L
 RT: 11.475 min Scan# 3152
 Delta R.T. 0.990 min
 Lab File: VU050035.D
 Acq: 29 Jul 2022 14:41

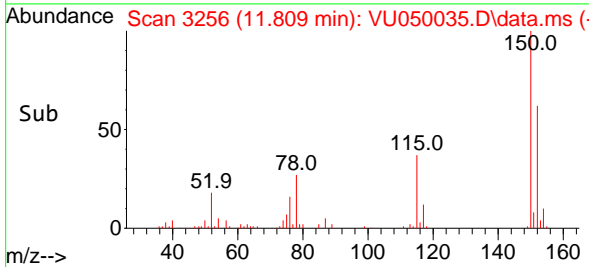
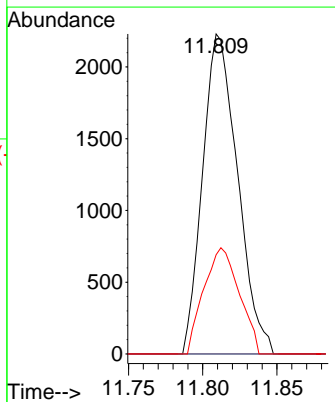
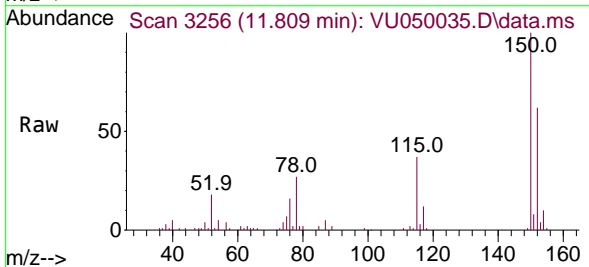
Instrument : MSVOA_U
 ClientSampleId : YBEA4

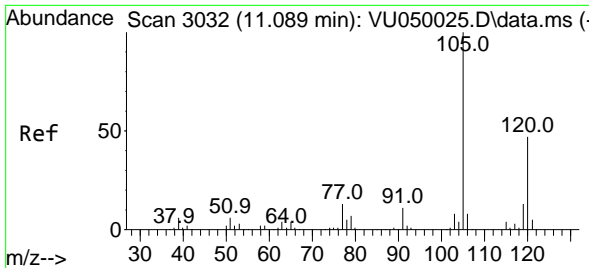
Tgt Ion	Resp	Lower	Upper
105	1611		
120	0.0	20.5	30.7#
77	107.1	12.6	18.8#



#61
 1,2,3-Trichloropropane
 Concen: 0.981 ug/L
 RT: 11.809 min Scan# 3256
 Delta R.T. 0.984 min
 Lab File: VU050035.D
 Acq: 29 Jul 2022 14:41

Tgt Ion	Resp	Lower	Upper
75	3651		
110	0.0	28.1	42.1#
77	33.7	24.7	37.1

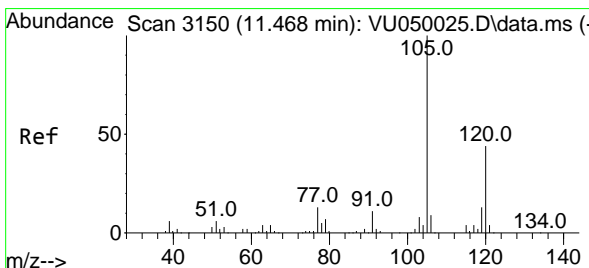
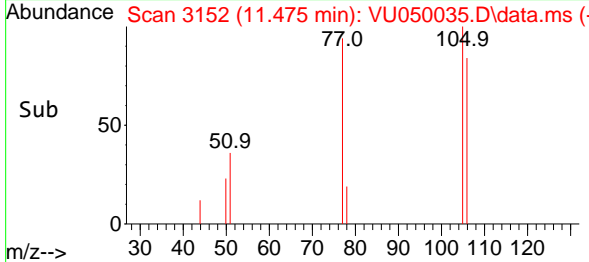
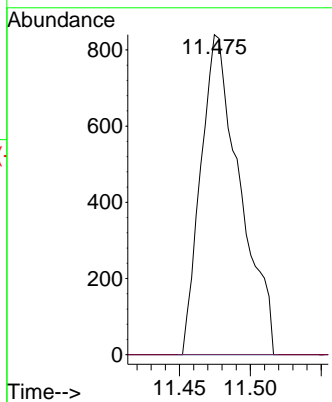
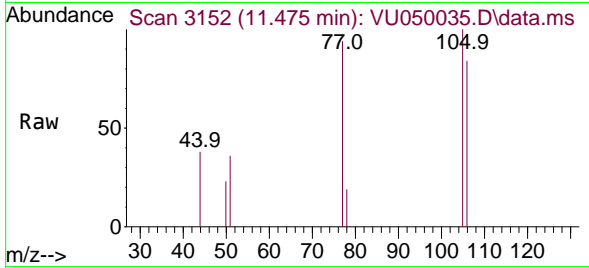




#62
 1,3,5-Trimethylbenzene
 Concen: 0.105 ug/L
 RT: 11.475 min Scan# 3152
 Delta R.T. 0.386 min
 Lab File: VU050035.D
 Acq: 29 Jul 2022 14:41

Instrument : MSVOA_U
 ClientSampleId : YBEA4

Tgt Ion:105 Resp: 1611
 Ion Ratio Lower Upper
 105 100
 120 0.0 38.2 57.4#



#63
 1,2,4-Trimethylbenzene
 Concen: 0.108 ug/L
 RT: 11.475 min Scan# 3152
 Delta R.T. 0.006 min
 Lab File: VU050035.D
 Acq: 29 Jul 2022 14:41

Tgt Ion:105 Resp: 1611
 Ion Ratio Lower Upper
 105 100
 120 0.0 35.4 53.2#

