

Data Path : Z:\VOASRV\HPCHEM1\MSVOA U\DATA\VU073018\
 Data File : VU025718.D
 Acq On : 30 Jul 2018 13:22
 Operator : MD/SY
 Sample : J4086-11
 Misc : 5.0mL/MSVOA U/WATER
 ALS Vial : 8 Sample Multiplier: 1

Instrument :
 MSVOA_U
 Client Sampled :
 1513

Manual Integrations
 APPROVED

MMDadoda
 7/31/2018 1:23:30 PM

Quant Time: Jul 30 14:02:28 2018
 Quant Method : Z:\VOASRV\HPCHEM1\MSVOA_U\METHOD\82U072718W.M
 Quant Title : SW846 8260
 QLast Update : Fri Jul 27 13:11:52 2018
 Response via : Initial Calibration

| Internal Standards | R.T. | QIon | Response | Conc | Units | Dev(Min) |
|----------------------------|-------|------|----------|-------|-------|----------|
| 1) Pentafluorobenzene | 4.99 | 168 | 171519 | 50.00 | ug/l | 0.00 |
| 34) 1,4-Difluorobenzene | 5.89 | 114 | 259850 | 50.00 | ug/l | 0.00 |
| 63) Chlorobenzene-d5 | 9.09 | 117 | 248137 | 50.00 | ug/l | 0.00 |
| 72) 1,4-Dichlorobenzene-d4 | 11.49 | 152 | 153249 | 50.00 | ug/l | 0.00 |

System Monitoring Compounds

| | | | | | | |
|---------------------------|--------|-----|--------|-------|------|--------|
| 33) 1,2-Dichloroethane-d4 | 5.31 | 65 | 130405 | 48.80 | ug/l | 0.00 |
| Spiked Amount | 50.000 | | | | | |
| Recovery | | | | | | 97.60% |
| 35) Dibromofluoromethane | 4.89 | 113 | 108860 | 48.17 | ug/l | 0.00 |
| Spiked Amount | 50.000 | | | | | |
| Recovery | | | | | | 96.34% |
| 50) Toluene-d8 | 7.57 | 98 | 381785 | 48.27 | ug/l | 0.00 |
| Spiked Amount | 50.000 | | | | | |
| Recovery | | | | | | 96.54% |
| 62) 4-Bromofluorobenzene | 10.31 | 95 | 142602 | 46.45 | ug/l | 0.00 |
| Spiked Amount | 50.000 | | | | | |
| Recovery | | | | | | 92.90% |

Target Compounds

| Target Compounds | R.T. | QIon | Response | Conc | Units | Qvalue |
|--------------------------------|-------|------|----------|--------|-------|--------|
| 3) Chloromethane | 1.33 | 50 | 80089 | 32.32 | ug/l | 97 |
| 4) Vinyl Chloride | 1.41 | 62 | 74225 | 31.83 | ug/l | 100 |
| 5) Bromomethane | 1.63 | 94 | 82528 | 72.46 | ug/l | 97 |
| 6) Chloroethane | 1.70 | 64 | 117122 | 85.90 | ug/l | 99 |
| 7) Trichlorofluoromethane | 1.89 | 101 | 211368 | 62.70 | ug/l | 100 |
| 19) Methyl tert-butyl Ether | 3.00 | 73 | 164079 | 24.59 | ug/l | 99 |
| 21) trans-1,2-Dichloroethene | 2.99 | 96 | 93170 | 43.76 | ug/l | 99 |
| 24) 1,1-Dichloroethane | 3.45 | 63 | 270240 | 69.03 | ug/l | 100 |
| 27) cis-1,2-Dichloroethene | 4.23 | 96 | 271873 | 113.27 | ug/l | 88 |
| 30) Chloroform | 4.68 | 83 | 140978 | 34.12 | ug/l | 96 |
| 32) 1,1,1-Trichloroethane | 4.92 | 97 | 61888 | 16.63 | ug/l | 99 |
| 42) 1,2-Dichloroethane | 5.41 | 62 | 422107m | 123.50 | ug/l | |
| 44) Trichloroethene | 6.19 | 130 | 69924 | 28.29 | ug/l | 97 |
| 45) 1,2-Dichloropropane | 6.44 | 63 | 198281 | 85.65 | ug/l | 97 |
| 47) Bromodichloromethane | 6.76 | 83 | 299482 | 93.60 | ug/l | 99 |
| 51) 4-Methyl-2-Pentanone | 7.46 | 43 | 393899 | 120.92 | ug/l | 100 |
| 52) Toluene | 7.64 | 92 | 225877 | 40.96 | ug/l | 99 |
| 53) t-1,3-Dichloropropene | 7.88 | 75 | 221893 | 61.76 | ug/l | 97 |
| 54) cis-1,3-Dichloropropene | 7.27 | 75 | 389685 | 105.59 | ug/l | 98 |
| 60) Dibromochloromethane | 8.48 | 129 | 212355 | 78.58 | ug/l | 99 |
| 61) 1,2-Dibromoethane | 8.59 | 107 | 166701 | 65.41 | ug/l | 99 |
| 65) Chlorobenzene | 9.12 | 112 | 660213 | 103.20 | ug/l | 100 |
| 67) Ethyl Benzene | 9.25 | 91 | 377223 | 35.60 | ug/l | 100 |
| 68) m/p-Xylenes | 9.38 | 106 | 332965 | 81.84 | ug/l | 99 |
| 69) o-Xylene | 9.78 | 106 | 336548 | 84.64 | ug/l | 98 |
| 71) Bromoform | 9.96 | 173 | 37739 | 18.81 | ug/l | # 99 |
| 76) 1,2,3-Trichloropropane | 10.50 | 75 | 245983 | 72.85 | ug/l | 86 |
| 84) 1,2,4-Trimethylbenzene | 11.15 | 105 | 367424 | 40.82 | ug/l | 98 |
| 88) 1,4-Dichlorobenzene | 11.51 | 146 | 532173 | 95.33 | ug/l | 100 |
| 91) 1,2-Dichlorobenzene | 11.88 | 146 | 371090 | 70.70 | ug/l | 99 |
| 92) 1,2-Dibromo-3-Chloropropan | 12.66 | 75 | 14714 | 17.16 | ug/l | 100 |
| 93) 1,2,4-Trichlorobenzene | 13.51 | 180 | 379357 | 107.08 | ug/l | 99 |
| 95) Naphthalene | 13.74 | 128 | 1282457 | 111.13 | ug/l | 99 |

Data Path : Z:\VOASRV\HPCHEM1\MSVOA U\DATA\VU073018\
Data File : VU025718.D
Acq On : 30 Jul 2018 13:22
Operator : MD/SY
Sample : J4086-11
Misc : 5.0mL/MSVOA U/WATER
ALS Vial : 8 Sample Multiplier: 1

Instrument :
MSVOA_U
ClientSampleId :
1513

Manual Integrations
APPROVED
MMDadoda
7/31/2018 1:23:30 PM

Quant Time: Jul 30 14:02:28 2018
Quant Method : Z:\VOASRV\HPCHEM1\MSVOA_U\METHOD\82U072718W.M
Quant Title : SW846 8260
QLast Update : Fri Jul 27 13:11:52 2018
Response via : Initial Calibration

Internal Standards R.T. QIon Response Conc Units Dev(Min)

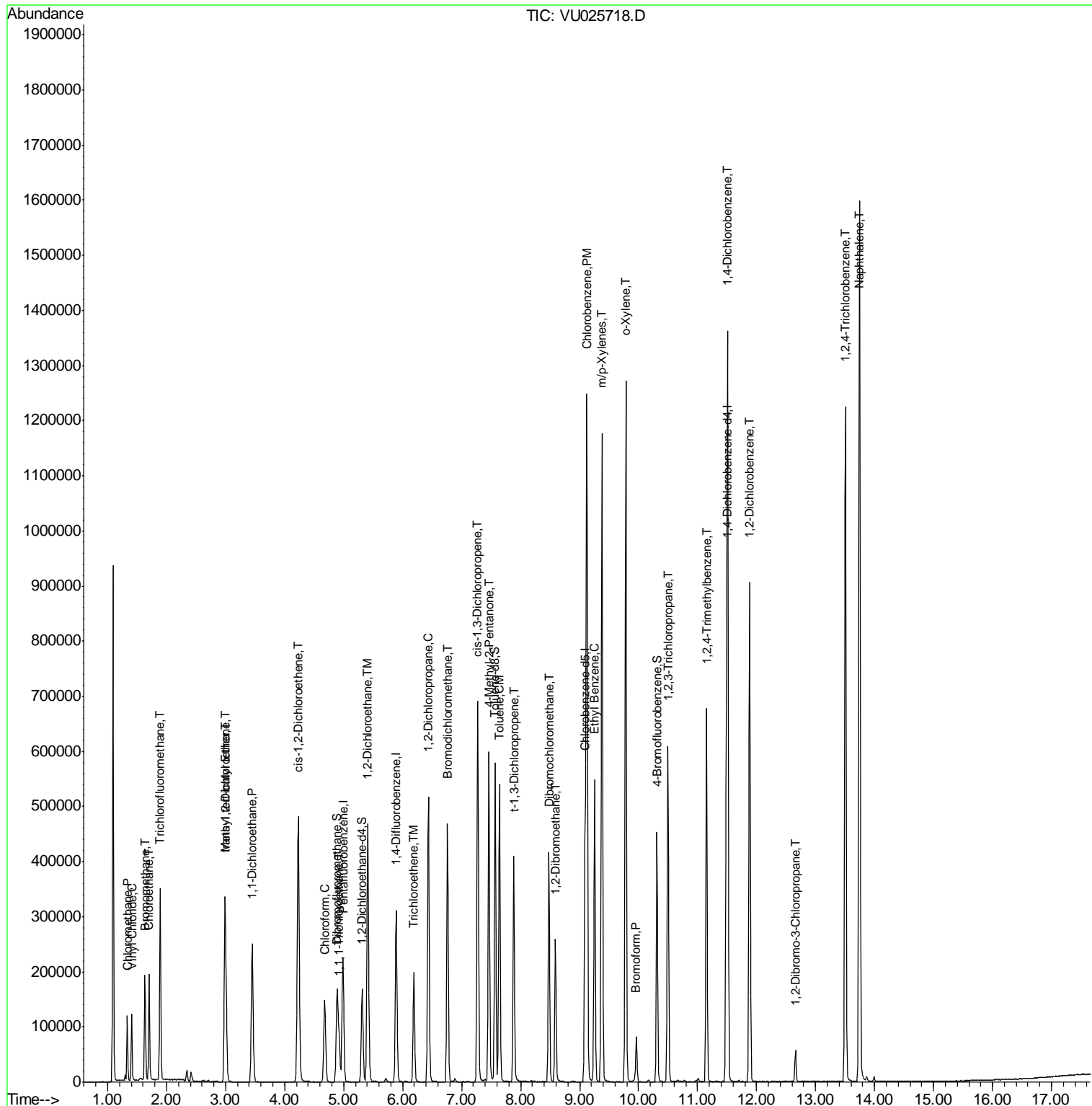
(#) = qualifier out of range (m) = manual integration (+) = signals summed

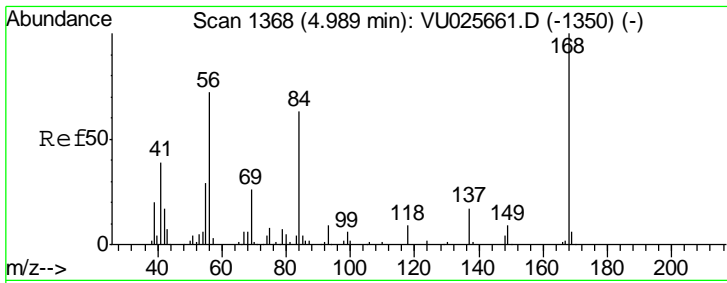
Data Path : Z:\VOASRV\HPCHEM1\MSVOA U\DATA\VU073018\
 Data File : VU025718.D
 Acq On : 30 Jul 2018 13:22
 Operator : MD/SY
 Sample : J4086-11
 Misc : 5.0mL/MSVOA U/WATER
 ALS Vial : 8 Sample Multiplier: 1

Instrument :
 MSVOA_U
 Client Sampled :
 1513

Manual Integrations
 APPROVED
 MMDadoda
 7/31/2018 1:23:30 PM

Quant Time: Jul 30 14:02:28 2018
 Quant Method : Z:\VOASRV\HPCHEM1\MSVOA_U\METHOD\82U072718W.M
 Quant Title : SW846 8260
 QLast Update : Fri Jul 27 13:11:52 2018
 Response via : Initial Calibration





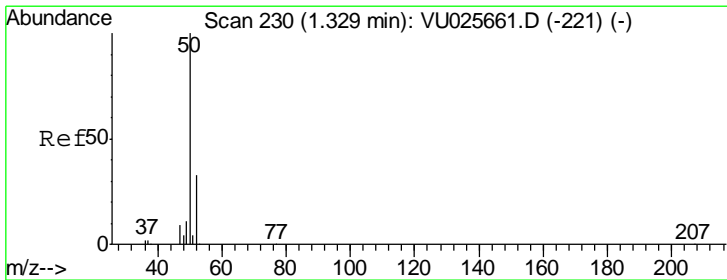
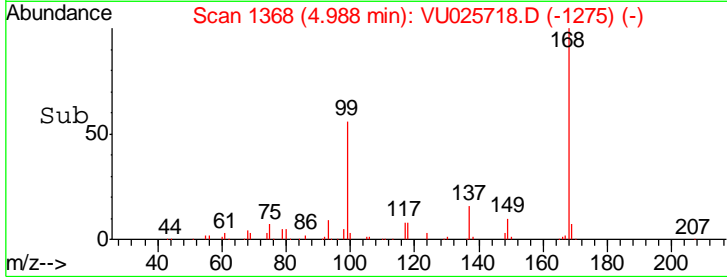
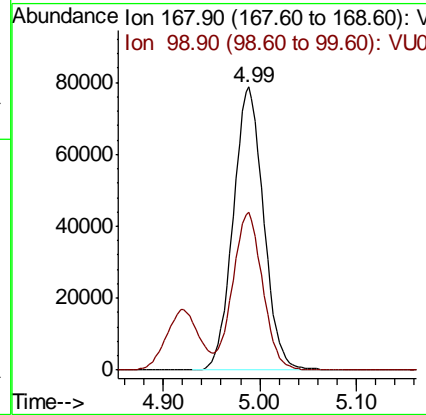
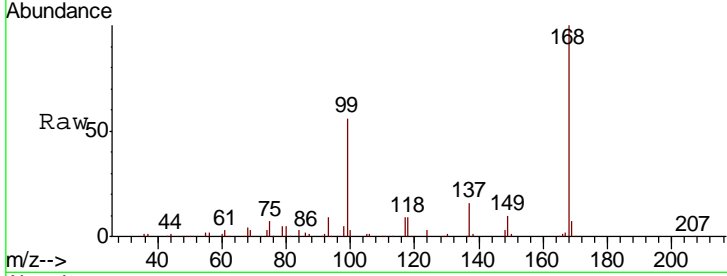
#1
 Pentafluorobenzene
 Concen: 50.00 ug/l
 RT: 4.99 min Scan# 1368
 Delta R.T. -0.00 min
 Lab File: VU025718.D
 Acq: 30 Jul 2018 13:22

Instrument : MSVOA_U
 ClientSampled : 1513

| Tgt Ion | Resp | Lower | Upper |
|---------|------|-------|-------|
| 168 | 100 | | |
| 99 | 55.7 | 42.8 | 64.2 |

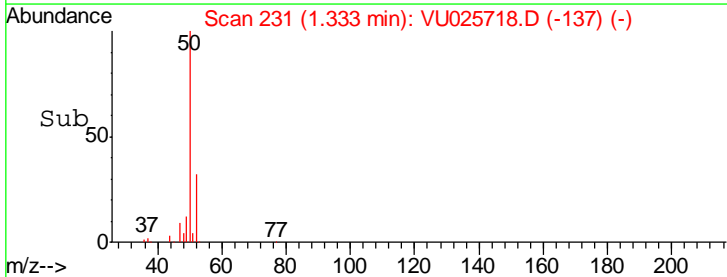
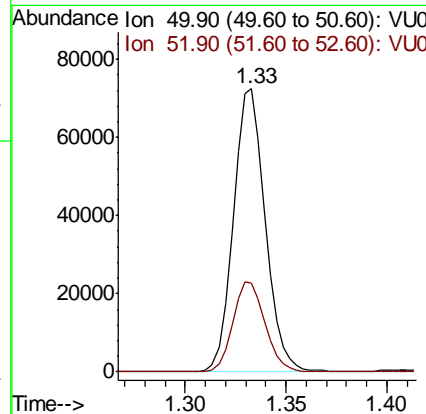
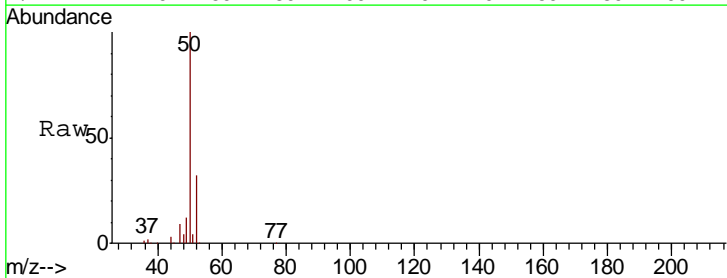
Manual Integrations
 APPROVED

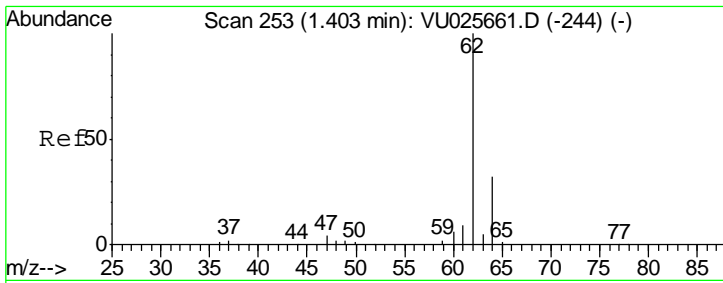
MMDadoda
 7/31/2018 1:23:30 PM



#3
 Chloromethane
 Concen: 32.32 ug/l
 RT: 1.33 min Scan# 231
 Delta R.T. 0.00 min
 Lab File: VU025718.D
 Acq: 30 Jul 2018 13:22

| Tgt Ion | Resp | Lower | Upper |
|---------|------|-------|-------|
| 50 | 100 | | |
| 52 | 31.6 | 26.5 | 39.7 |





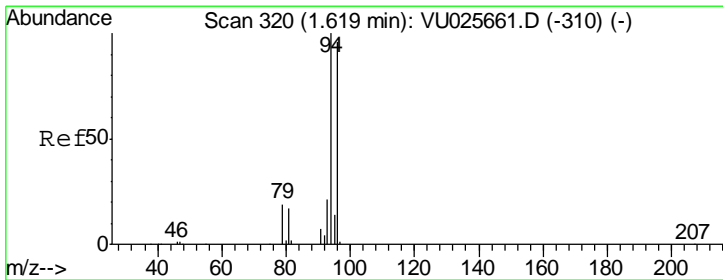
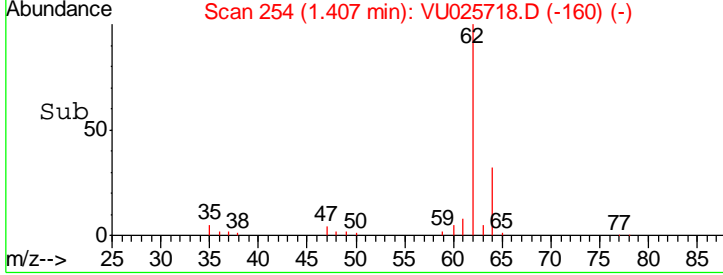
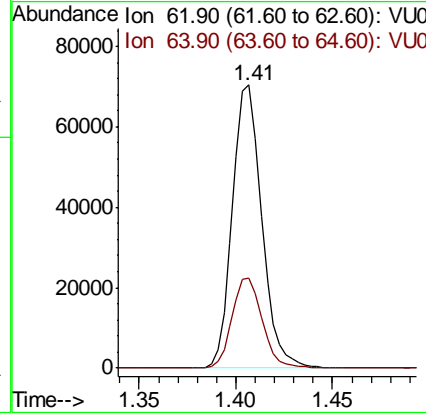
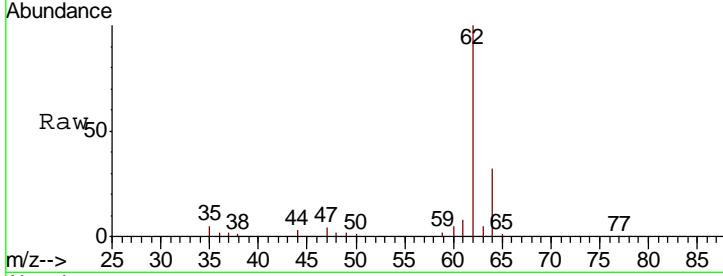
#4
 Vinyl Chloride
 Concen: 31.83 ug/l
 RT: 1.41 min Scan# 254
 Delta R.T. 0.00 min
 Lab File: VU025718.D
 Acq: 30 Jul 2018 13:22

Instrument :
 MSVOA_U
 ClientSampled :
 1513

| Tgt Ion | Resp | Lower | Upper |
|---------|------|-------|-------|
| 62 | 100 | | |
| 64 | 31.9 | 25.4 | 38.0 |

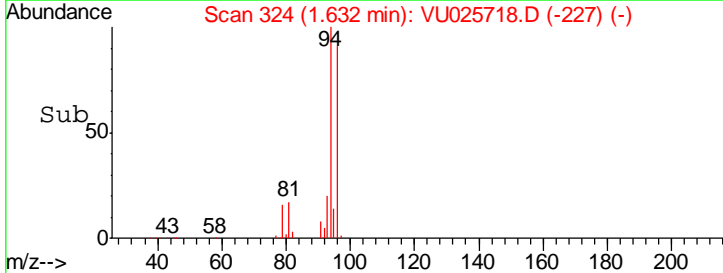
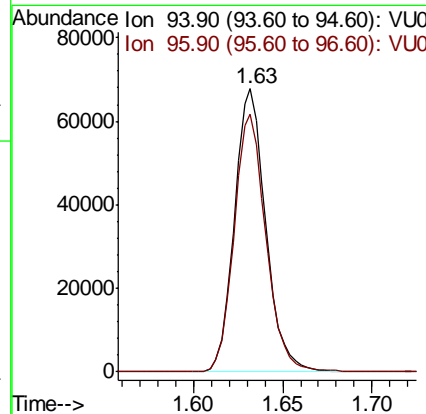
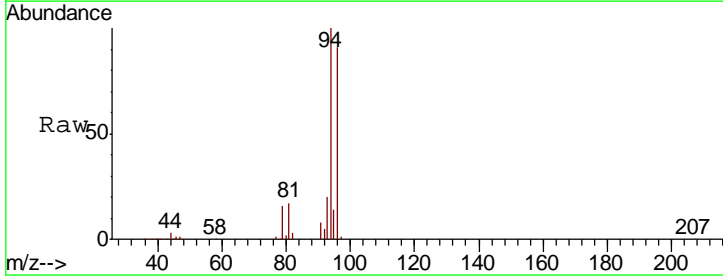
Manual Integrations
 APPROVED

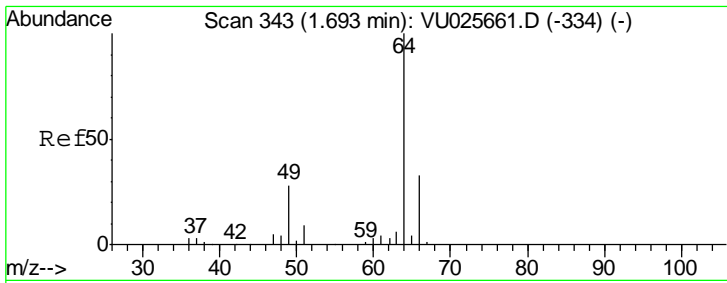
MMDadoda
 7/31/2018 1:23:30 PM



#5
 Bromomethane
 Concen: 72.46 ug/l
 RT: 1.63 min Scan# 324
 Delta R.T. 0.01 min
 Lab File: VU025718.D
 Acq: 30 Jul 2018 13:22

| Tgt Ion | Resp | Lower | Upper |
|---------|------|-------|-------|
| 94 | 100 | | |
| 96 | 91.0 | 75.0 | 112.4 |



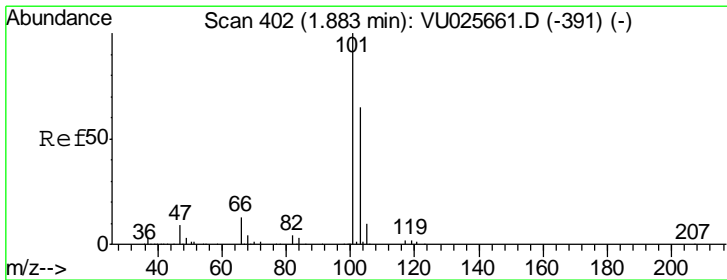
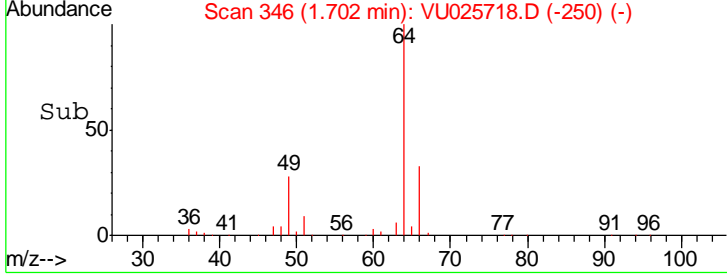
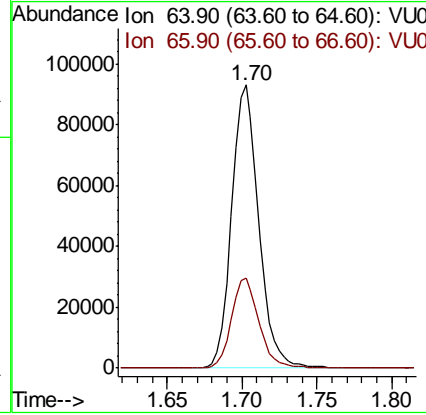
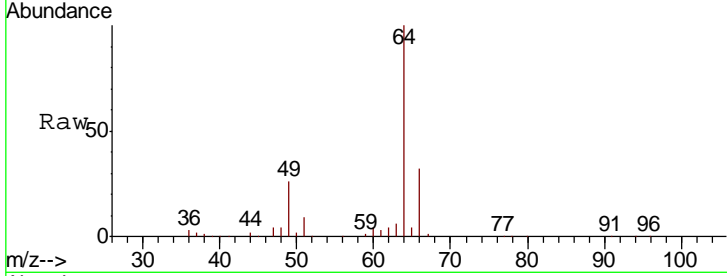


#6
 Chloroethane
 Concen: 85.90 ug/l
 RT: 1.70 min Scan# 346
 Delta R.T. 0.01 min
 Lab File: VU025718.D
 Acq: 30 Jul 2018 13:22

Instrument :
 MSVOA_U
 ClientSampled :
 1513

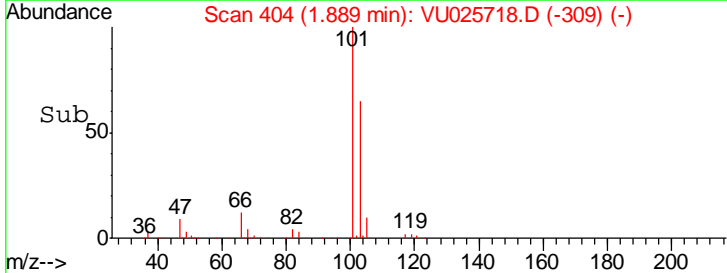
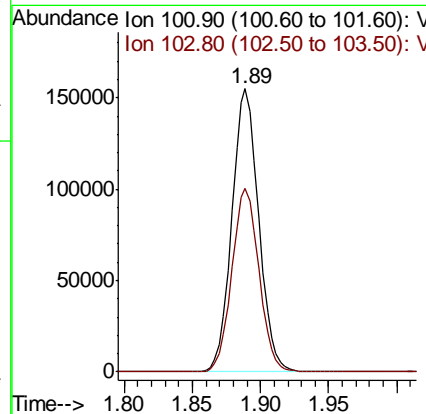
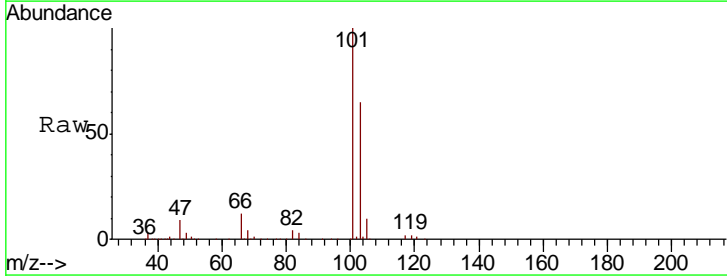
Tgt Ion: 64 Resp: 117122
 Ion Ratio Lower Upper
 64 100
 66 31.8 25.0 37.4

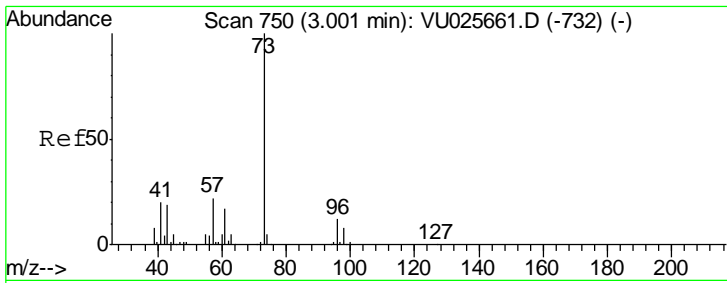
Manual Integrations
APPROVED
 MMDadoda
 7/31/2018 1:23:30 PM



#7
 Trichlorofluoromethane
 Concen: 62.70 ug/l
 RT: 1.89 min Scan# 404
 Delta R.T. 0.01 min
 Lab File: VU025718.D
 Acq: 30 Jul 2018 13:22

Tgt Ion: 101 Resp: 211368
 Ion Ratio Lower Upper
 101 100
 103 65.0 52.2 78.2





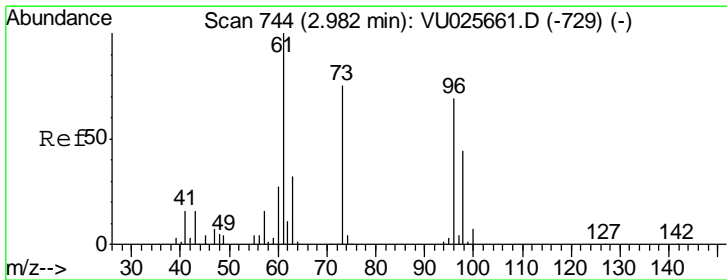
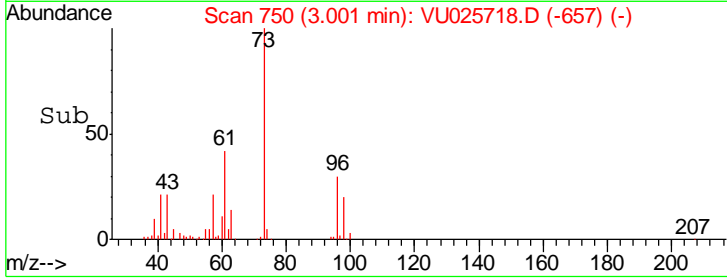
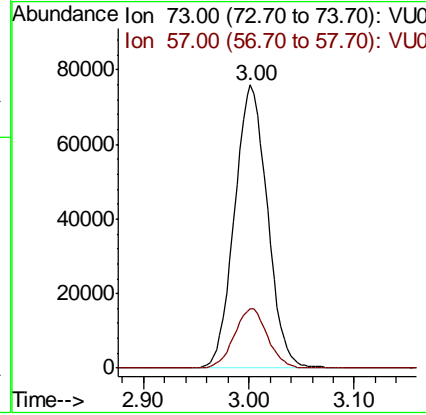
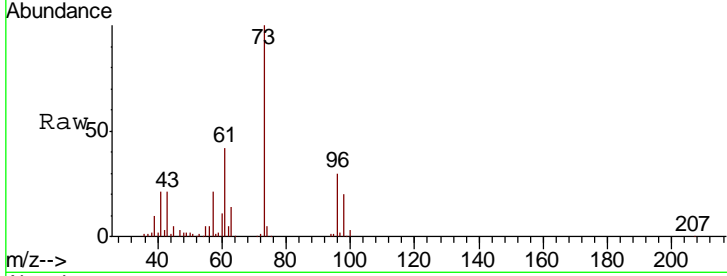
#19
 Methyl tert-butyl Ether
 Concen: 24.59 ug/l
 RT: 3.00 min Scan# 750
 Delta R.T. 0.00 min
 Lab File: VU025718.D
 Acq: 30 Jul 2018 13:22

Instrument :
 MSVOA_U
ClientSampled :
 1513

| Tgt Ion | Resp | Lower | Upper |
|---------|--------|-------|-------|
| 73 | 164079 | | |
| 57 | 21.1 | 17.4 | 26.2 |

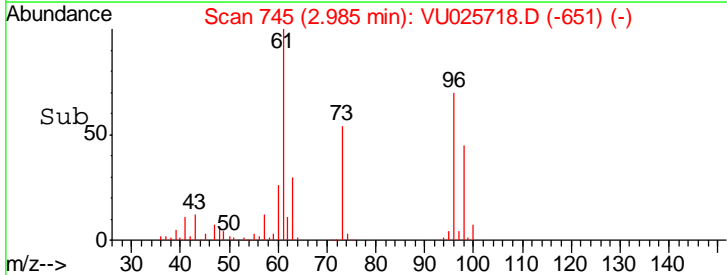
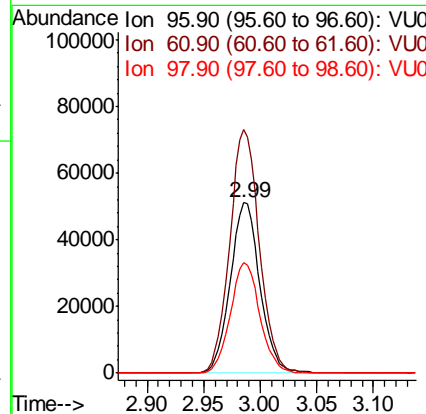
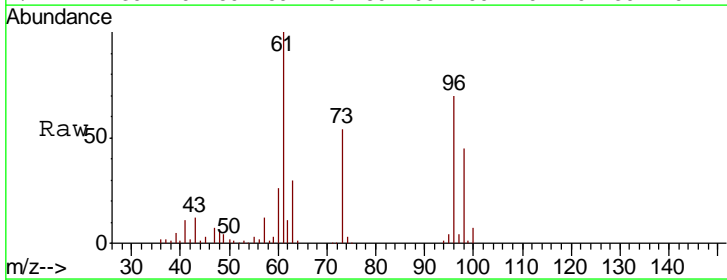
Manual Integrations
APPROVED

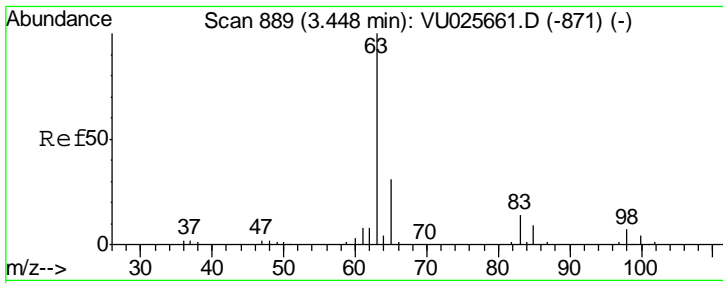
MMDadoda
 7/31/2018 1:23:30 PM



#21
 trans-1,2-Dichloroethene
 Concen: 43.76 ug/l
 RT: 2.99 min Scan# 745
 Delta R.T. 0.00 min
 Lab File: VU025718.D
 Acq: 30 Jul 2018 13:22

| Tgt Ion | Resp | Lower | Upper |
|---------|-------|-------|-------|
| 96 | 93170 | | |
| 61 | 142.8 | 114.5 | 171.7 |
| 98 | 64.5 | 50.5 | 75.7 |





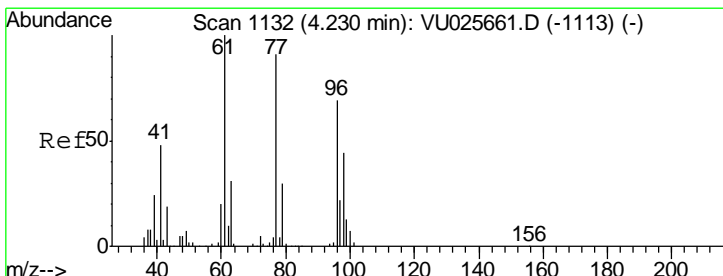
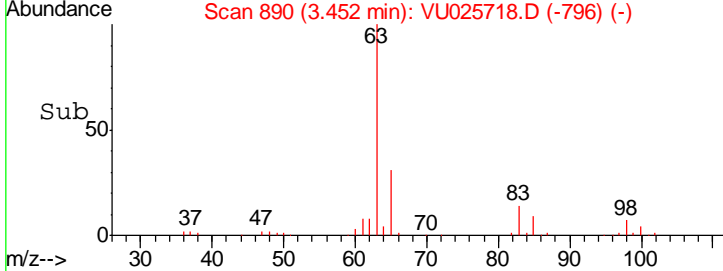
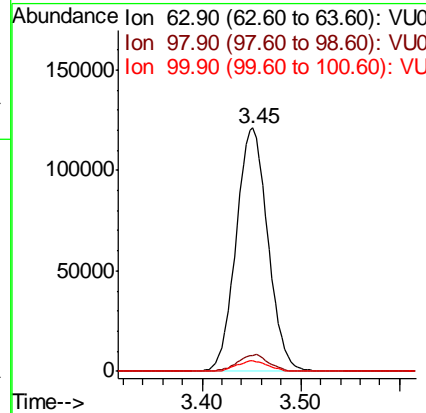
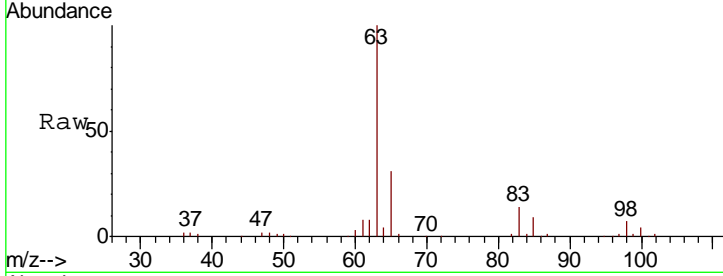
#24
 1,1-Dichloroethane
 Concen: 69.03 ug/l
 RT: 3.45 min Scan# 890
 Delta R.T. 0.00 min
 Lab File: VU025718.D
 Acq: 30 Jul 2018 13:22

Instrument :
 MSVOA_U
 ClientSampled :
 1513

| Tgt Ion | Resp | Lower | Upper |
|---------|------|-------|-------|
| 63 | 100 | | |
| 98 | 6.7 | 3.4 | 10.1 |
| 100 | 4.4 | 2.0 | 6.0 |

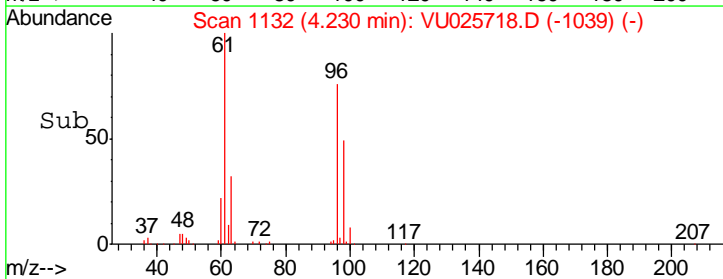
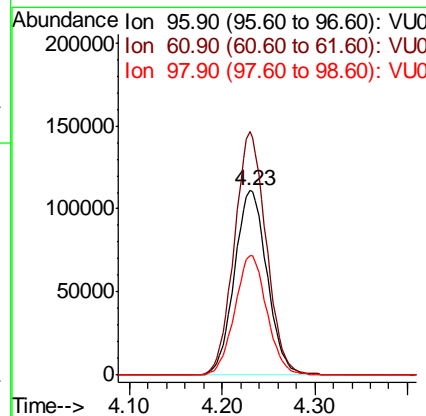
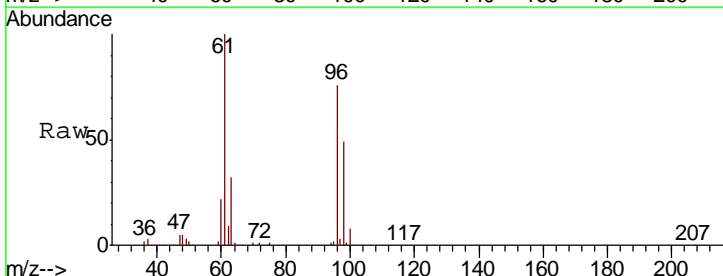
Manual Integrations
 APPROVED

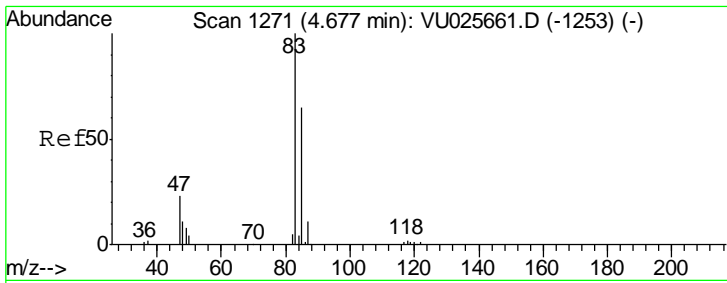
MMDadoda
 7/31/2018 1:23:30 PM



#27
 cis-1,2-Dichloroethene
 Concen: 113.27 ug/l
 RT: 4.23 min Scan# 1132
 Delta R.T. -0.00 min
 Lab File: VU025718.D
 Acq: 30 Jul 2018 13:22

| Tgt Ion | Resp | Lower | Upper |
|---------|-------|-------|-------|
| 96 | 100 | | |
| 61 | 128.5 | 0.0 | 299.8 |
| 98 | 63.6 | 0.0 | 128.6 |





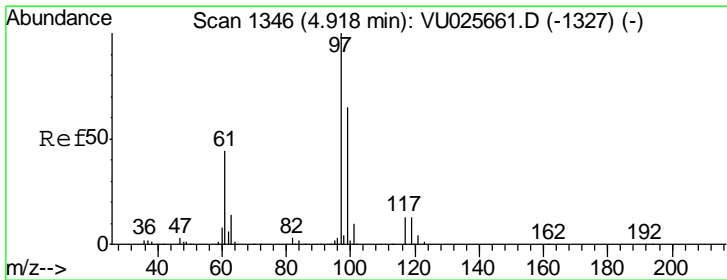
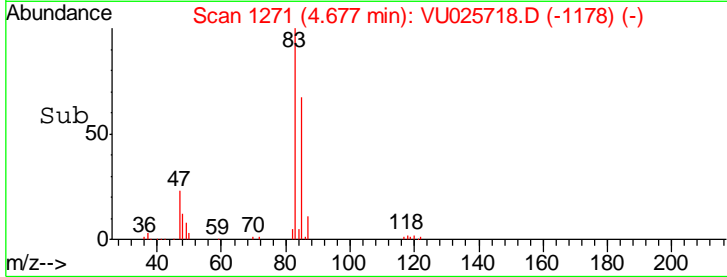
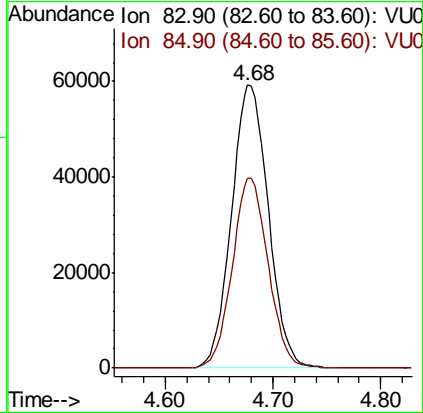
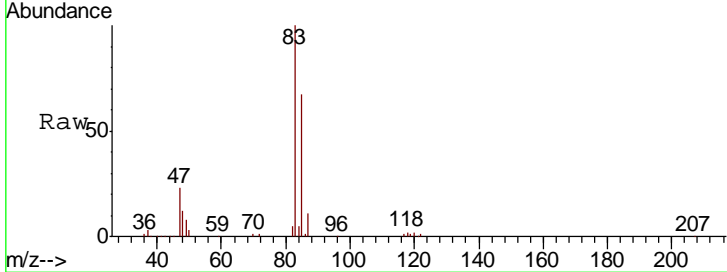
#30
 Chloroform
 Concen: 34.12 ug/l
 RT: 4.68 min Scan# 1271
 Delta R.T. 0.00 min
 Lab File: VU025718.D
 Acq: 30 Jul 2018 13:22

Instrument : MSVOA_U
 ClientSampled : 1513

| Tgt Ion | Resp | Lower | Upper |
|---------|------|-------|-------|
| 83 | 100 | | |
| 85 | 67.2 | 51.5 | 77.3 |

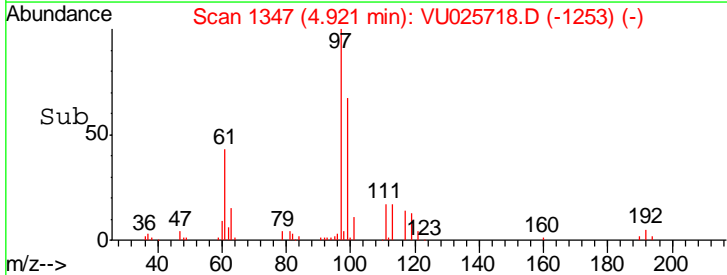
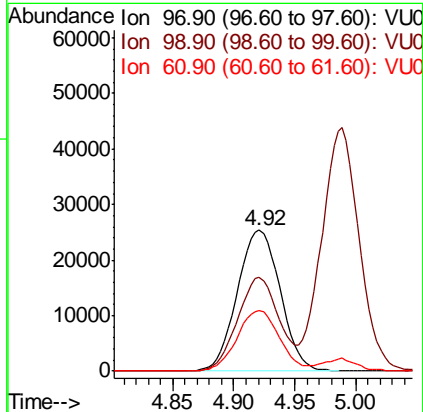
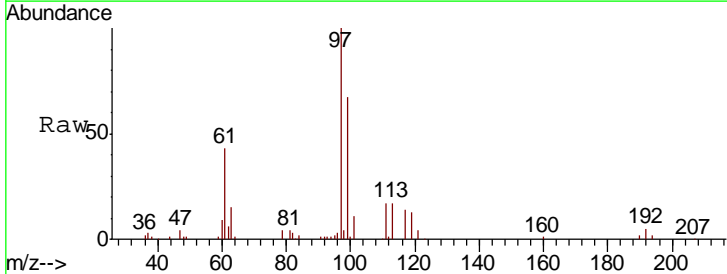
Manual Integrations
 APPROVED

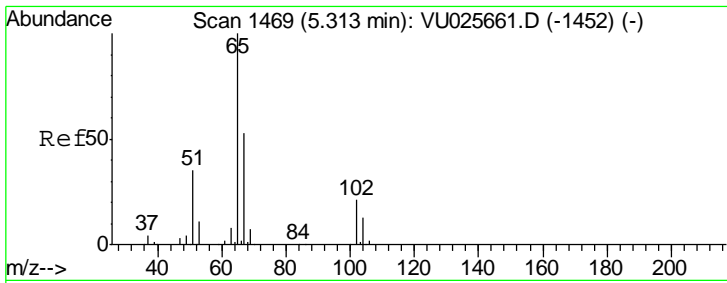
MMDadoda
 7/31/2018 1:23:30 PM



#32
 1,1,1-Trichloroethane
 Concen: 16.63 ug/l
 RT: 4.92 min Scan# 1347
 Delta R.T. 0.00 min
 Lab File: VU025718.D
 Acq: 30 Jul 2018 13:22

| Tgt Ion | Resp | Lower | Upper |
|---------|------|-------|-------|
| 97 | 100 | | |
| 99 | 63.9 | 50.8 | 76.2 |
| 61 | 42.8 | 35.2 | 52.8 |





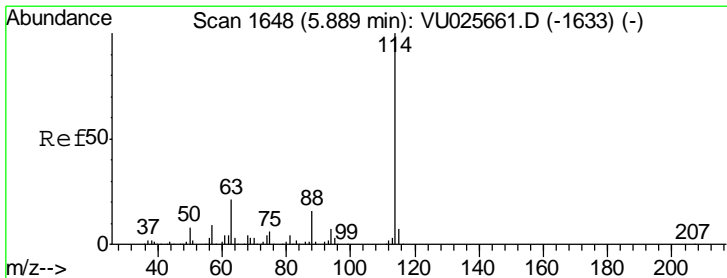
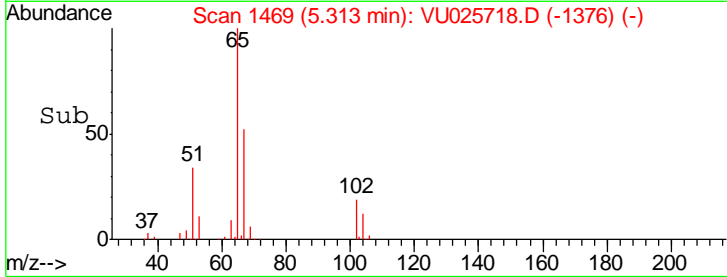
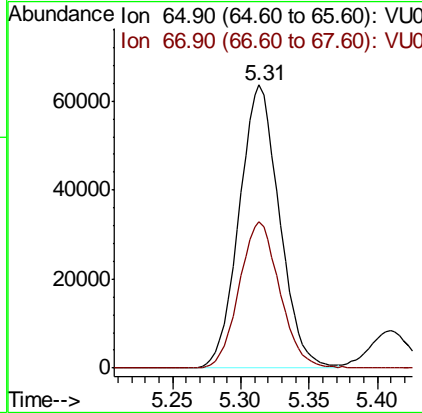
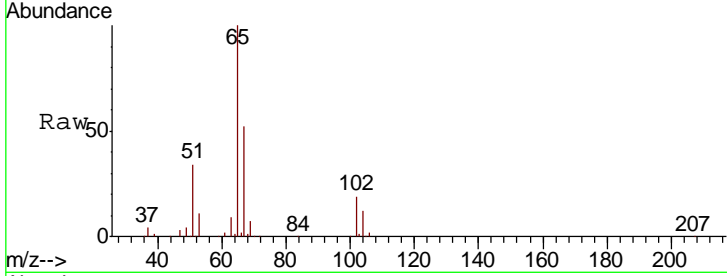
#33
 1,2-Dichloroethane-d4
 Concen: 48.80 ug/l
 RT: 5.31 min Scan# 1469
 Delta R.T. 0.00 min
 Lab File: VU025718.D
 Acq: 30 Jul 2018 13:22

Instrument : MSVOA_U
 ClientSampled : 1513

| Tgt Ion | Resp | Lower | Upper |
|---------|--------|-------|-------|
| 65 | 130405 | | |
| 67 | 52.2 | 0.0 | 103.6 |

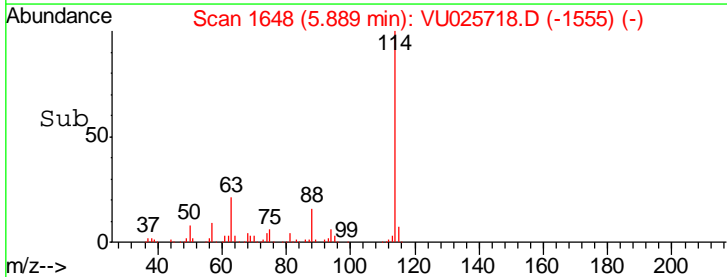
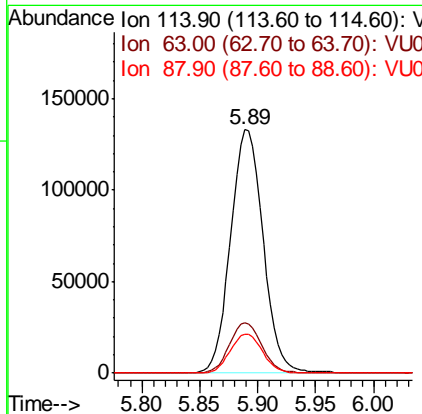
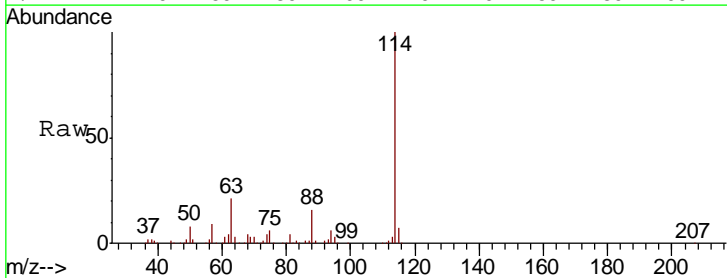
Manual Integrations
 APPROVED

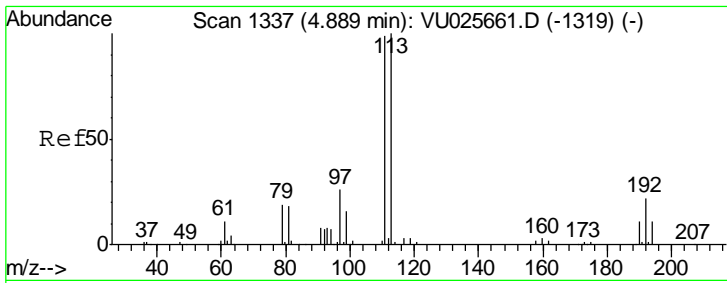
MMDadoda
 7/31/2018 1:23:30 PM



#34
 1,4-Difluorobenzene
 Concen: 50.00 ug/l
 RT: 5.89 min Scan# 1648
 Delta R.T. -0.00 min
 Lab File: VU025718.D
 Acq: 30 Jul 2018 13:22

| Tgt Ion | Resp | Lower | Upper |
|---------|--------|-------|-------|
| 114 | 259850 | | |
| 63 | 20.7 | 0.0 | 41.6 |
| 88 | 15.9 | 0.0 | 32.4 |





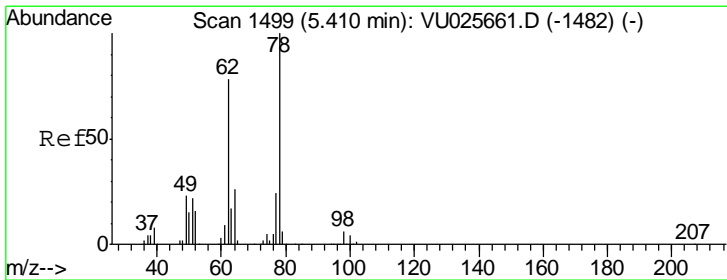
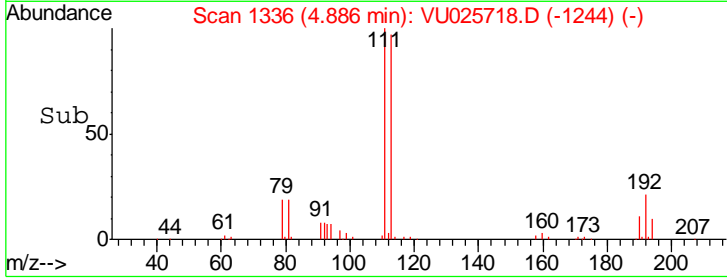
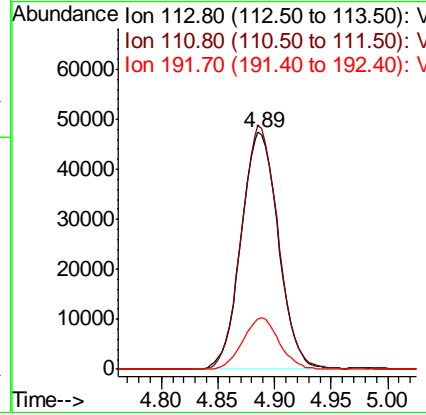
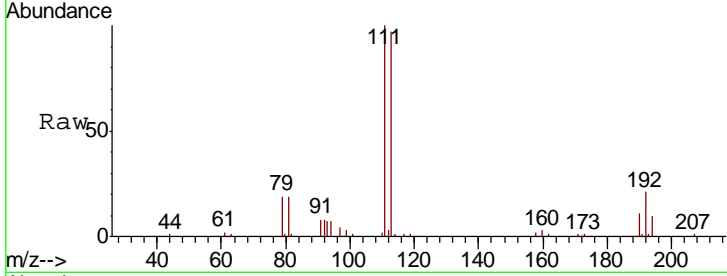
#35
 Dibromofluoromethane
 Concen: 48.17 ug/l
 RT: 4.89 min Scan# 1336
 Delta R.T. -0.00 min
 Lab File: VU025718.D
 Acq: 30 Jul 2018 13:22

Instrument : MSVOA_U
 ClientSampled : 1513

| Tgt Ion | Resp | Lower | Upper |
|---------|--------|-------|-------|
| 113 | 108860 | | |
| 111 | 101.1 | 81.7 | 122.5 |
| 192 | 21.1 | 17.1 | 25.7 |

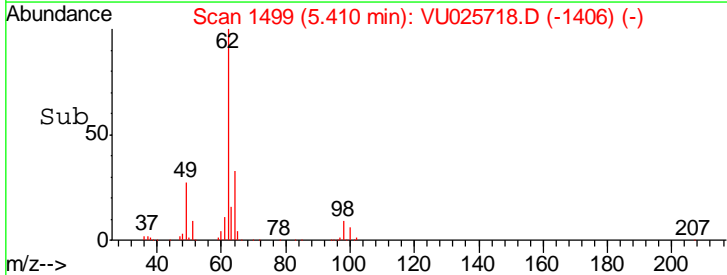
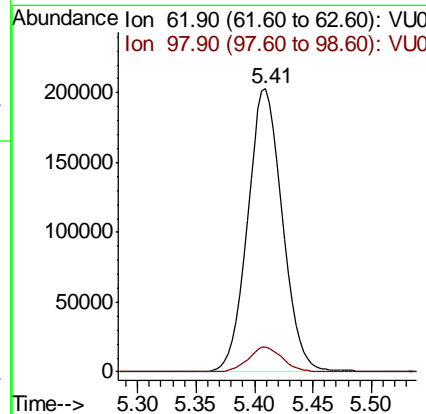
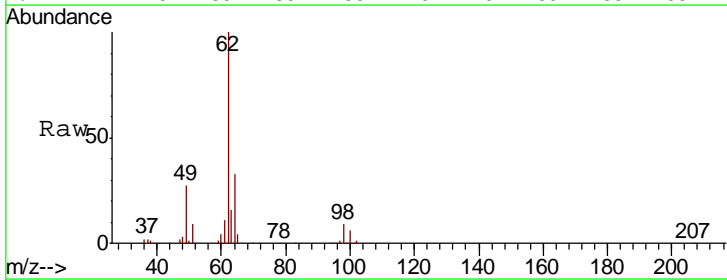
Manual Integrations
 APPROVED

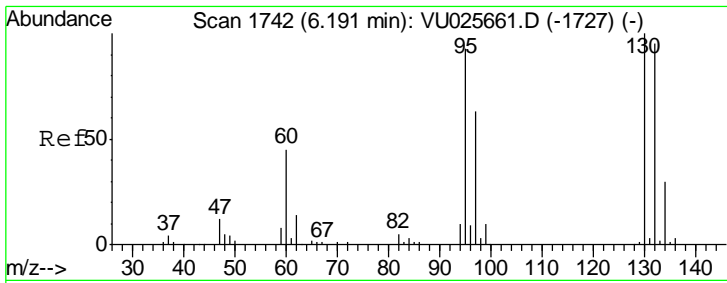
MMDadoda
 7/31/2018 1:23:30 PM



#42
 1,2-Dichloroethane
 Concen: 123.50 ug/l m
 RT: 5.41 min Scan# 1499
 Delta R.T. -0.00 min
 Lab File: VU025718.D
 Acq: 30 Jul 2018 13:22

| Tgt Ion | Resp | Lower | Upper |
|---------|--------|-------|-------|
| 62 | 422107 | | |
| 98 | 0.0 | 0.0 | 16.4 |



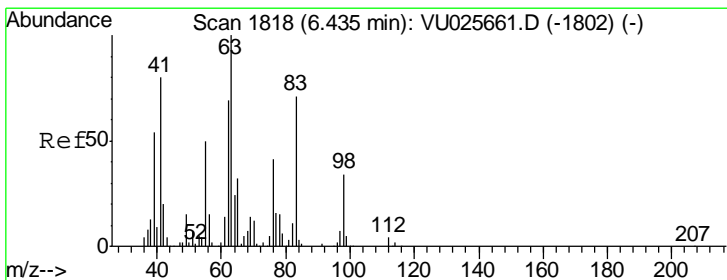
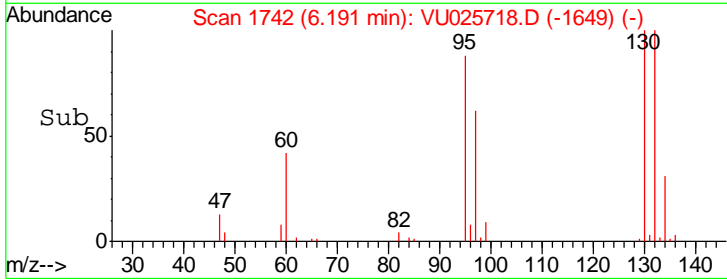
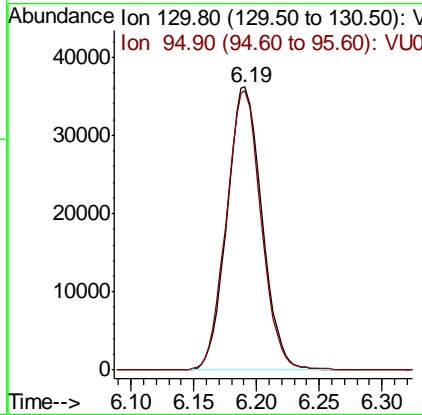
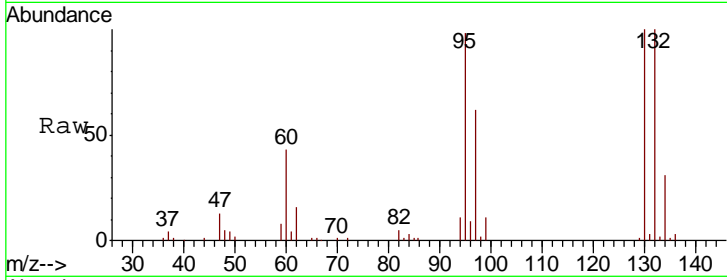


#44
 Trichloroethene
 Concen: 28.29 ug/l
 RT: 6.19 min Scan# 1742
 Delta R.T. 0.00 min
 Lab File: VU025718.D
 Acq: 30 Jul 2018 13:22

Instrument : MSVOA_U
 ClientSampled : 1513

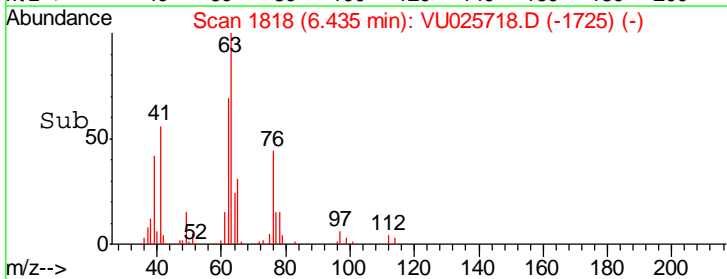
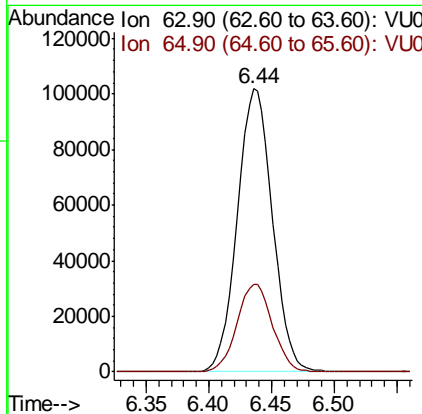
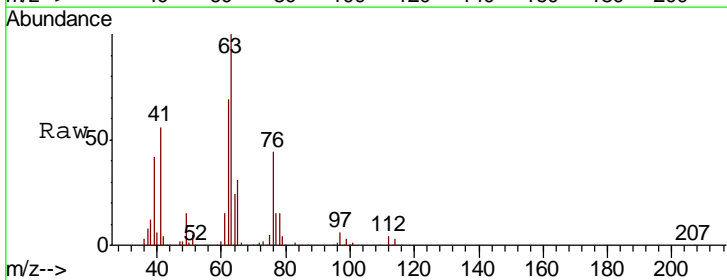
| Tgt Ion | Resp | Lower | Upper |
|---------|------|-------|-------|
| 130 | 100 | | |
| 95 | 98.7 | 0.0 | 192.2 |

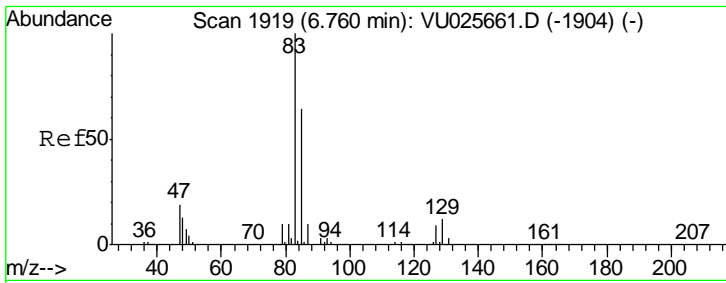
Manual Integrations
APPROVED
 MMDadoda
 7/31/2018 1:23:30 PM



#45
 1,2-Dichloropropane
 Concen: 85.65 ug/l
 RT: 6.44 min Scan# 1818
 Delta R.T. -0.00 min
 Lab File: VU025718.D
 Acq: 30 Jul 2018 13:22

| Tgt Ion | Resp | Lower | Upper |
|---------|------|-------|-------|
| 63 | 100 | | |
| 65 | 31.1 | 26.1 | 39.1 |





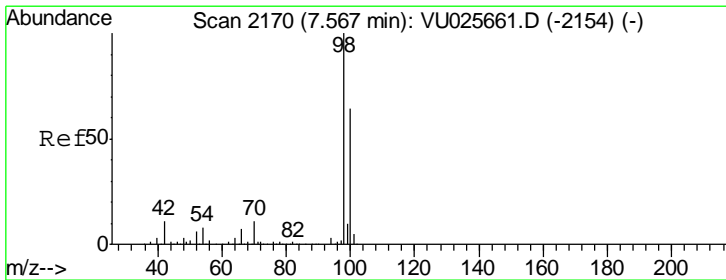
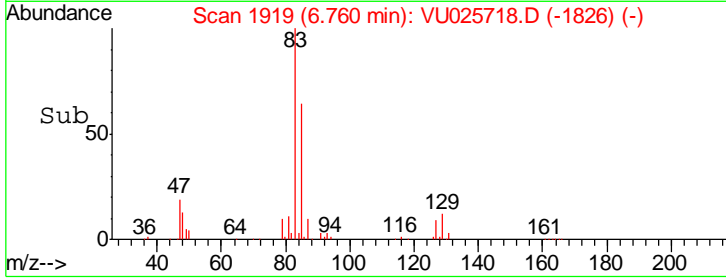
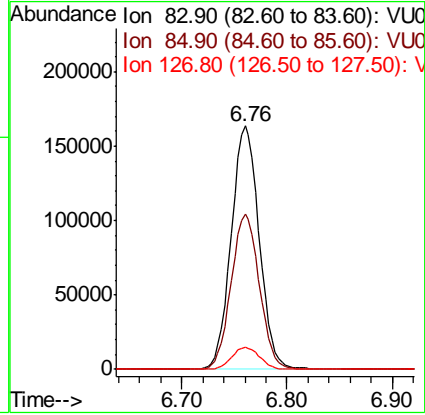
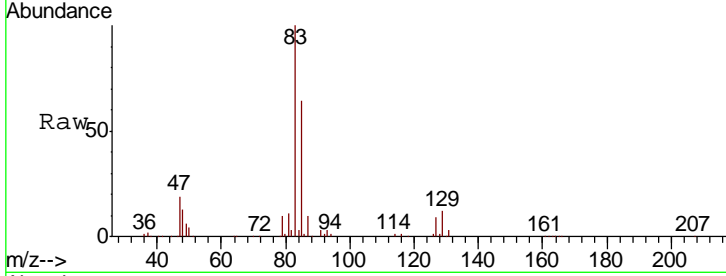
#47
 Bromodichloromethane
 Concen: 93.60 ug/l
 RT: 6.76 min Scan# 1919
 Delta R.T. -0.00 min
 Lab File: VU025718.D
 Acq: 30 Jul 2018 13:22

Instrument :
 MSVOA_U
 ClientSampled :
 1513

| Tgt Ion | Resp | Lower | Upper |
|---------|--------|-------|-------|
| 83 | 299482 | | |
| 85 | 63.7 | 50.2 | 75.4 |
| 127 | 9.0 | 7.2 | 10.8 |

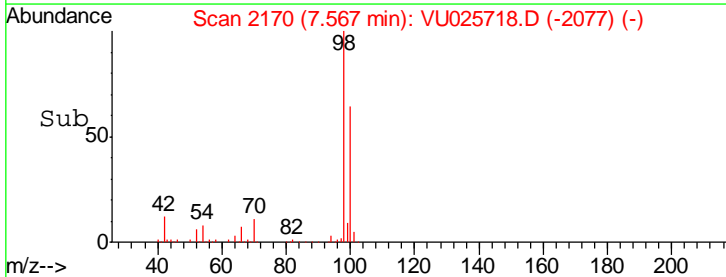
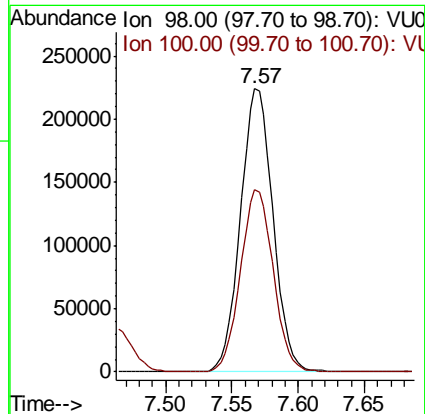
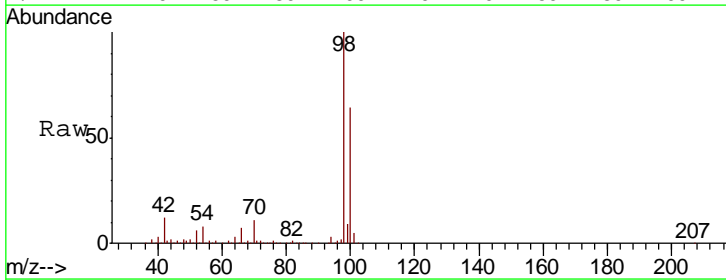
Manual Integrations
 APPROVED

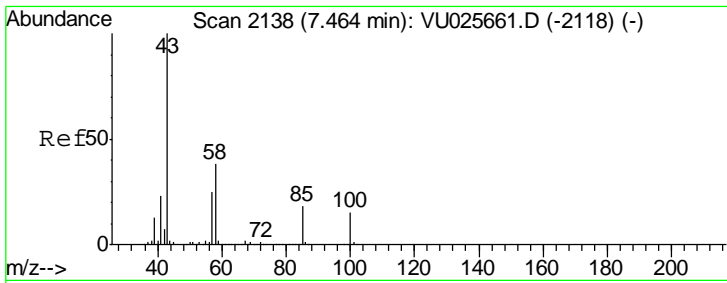
MMDadoda
 7/31/2018 1:23:30 PM



#50
 Toluene-d8
 Concen: 48.27 ug/l
 RT: 7.57 min Scan# 2170
 Delta R.T. 0.00 min
 Lab File: VU025718.D
 Acq: 30 Jul 2018 13:22

| Tgt Ion | Resp | Lower | Upper |
|---------|--------|-------|-------|
| 98 | 381785 | | |
| 100 | 64.5 | 51.1 | 76.7 |



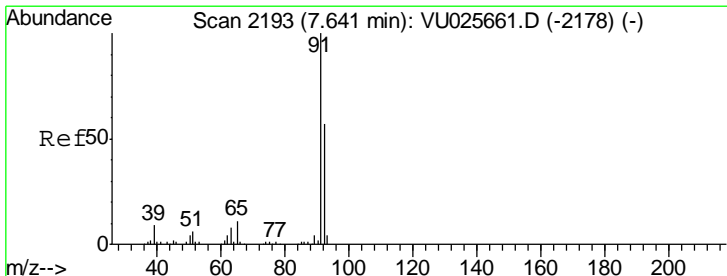
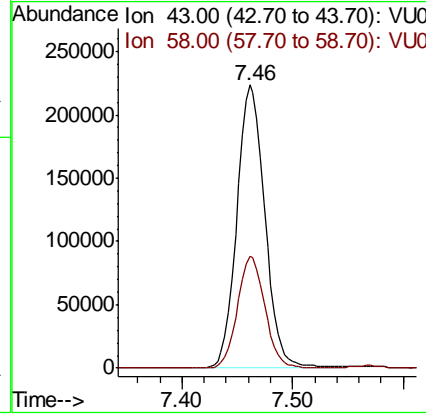
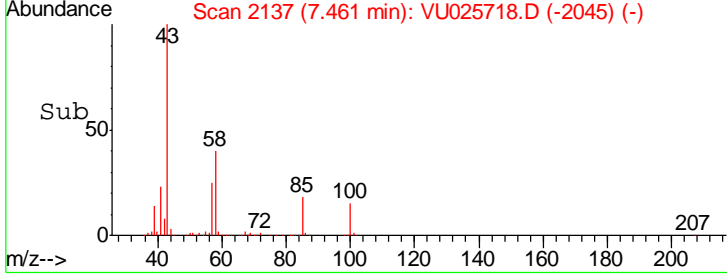
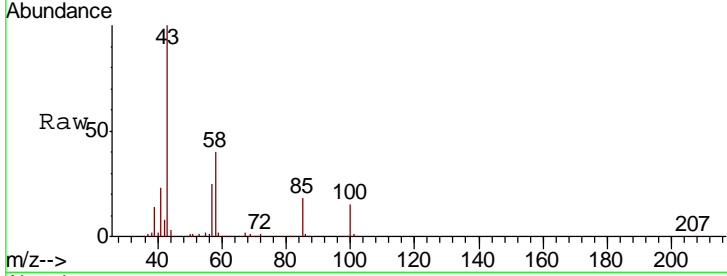


#51
 4-Methyl-2-Pentanone
 Concen: 120.92 ug/l
 RT: 7.46 min Scan# 2137
 Delta R.T. -0.00 min
 Lab File: VU025718.D
 Acq: 30 Jul 2018 13:22

Instrument : MSVOA_U
 ClientSampled : 1513

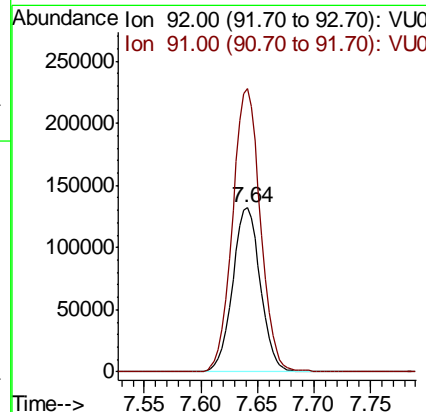
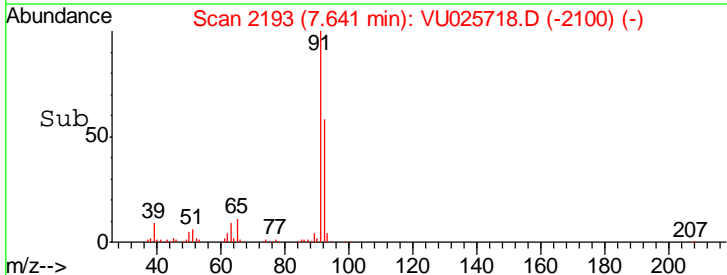
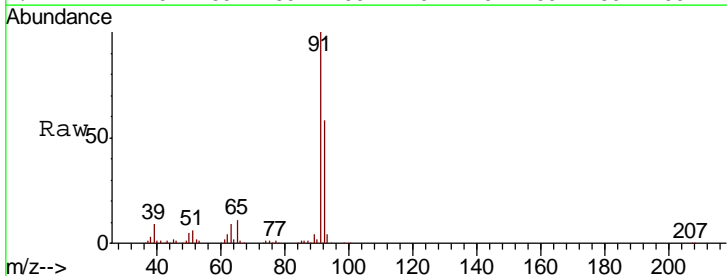
| Tgt Ion | Resp | Lower | Upper |
|---------|------|-------|-------|
| 43 | 100 | | |
| 58 | 38.7 | 31.0 | 46.4 |

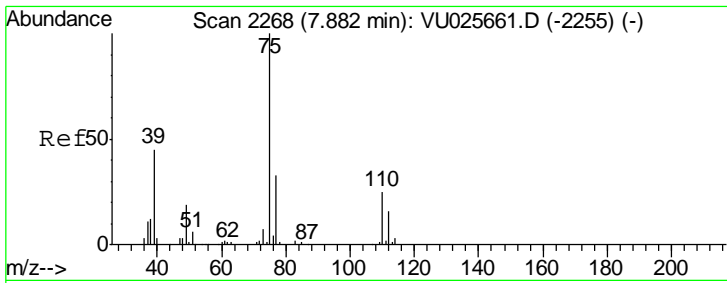
Manual Integrations APPROVED
 MMDadoda
 7/31/2018 1:23:30 PM



#52
 Toluene
 Concen: 40.96 ug/l
 RT: 7.64 min Scan# 2193
 Delta R.T. 0.00 min
 Lab File: VU025718.D
 Acq: 30 Jul 2018 13:22

| Tgt Ion | Resp | Lower | Upper |
|---------|-------|-------|-------|
| 92 | 100 | | |
| 91 | 173.1 | 139.2 | 208.8 |



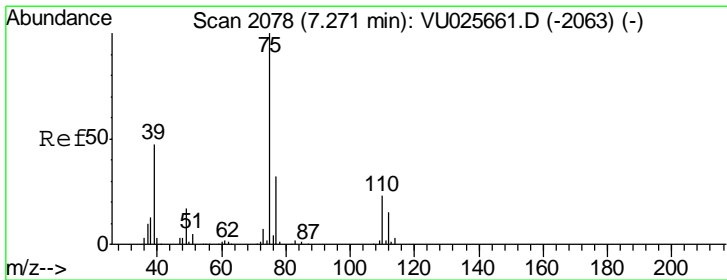
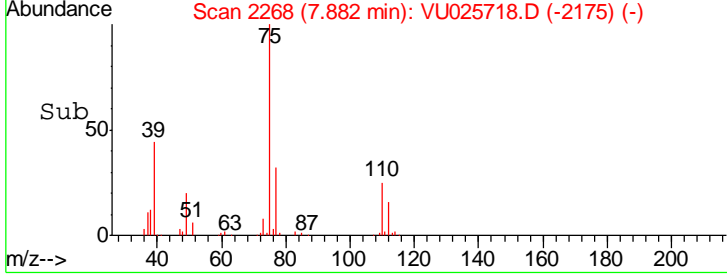
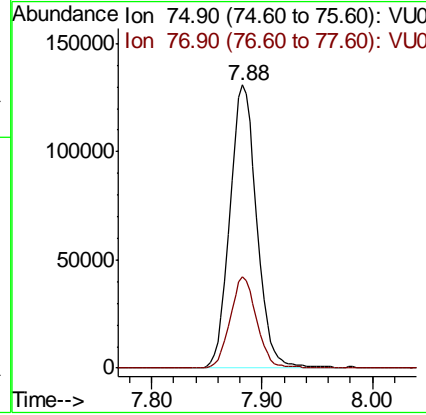
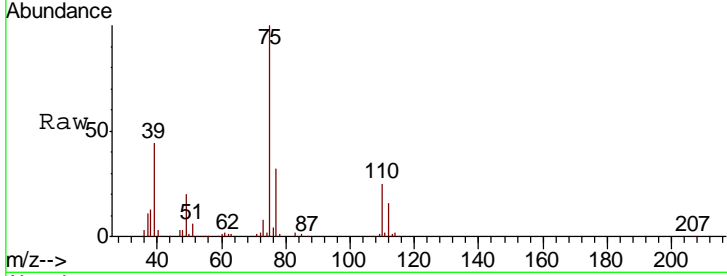


#53
 t-1,3-Dichloropropene
 Concen: 61.76 ug/l
 RT: 7.88 min Scan# 2268
 Delta R.T. 0.00 min
 Lab File: VU025718.D
 Acq: 30 Jul 2018 13:22

Instrument : MSVOA_U
 ClientSampled : 1513

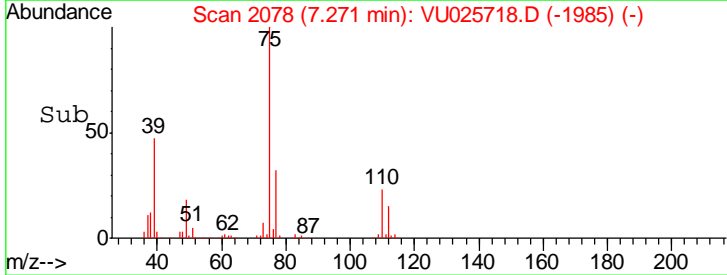
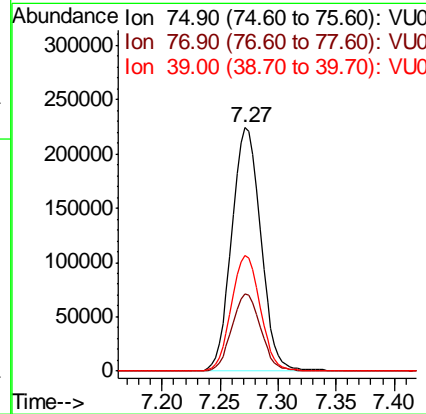
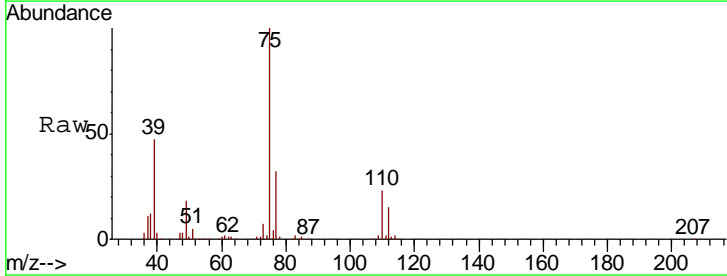
| Tgt Ion | Resp | Lower | Upper |
|---------|--------|-------|-------|
| 75 | 221893 | | |
| 75 | 100 | | |
| 77 | 32.2 | 24.5 | 36.7 |

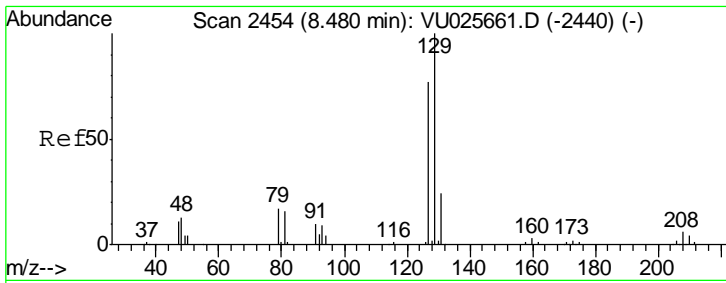
Manual Integrations
APPROVED
 MMDadoda
 7/31/2018 1:23:30 PM



#54
 cis-1,3-Dichloropropene
 Concen: 105.59 ug/l
 RT: 7.27 min Scan# 2078
 Delta R.T. -0.00 min
 Lab File: VU025718.D
 Acq: 30 Jul 2018 13:22

| Tgt Ion | Resp | Lower | Upper |
|---------|--------|-------|-------|
| 75 | 389685 | | |
| 75 | 100 | | |
| 77 | 31.8 | 25.6 | 38.4 |
| 39 | 47.4 | 40.0 | 60.0 |





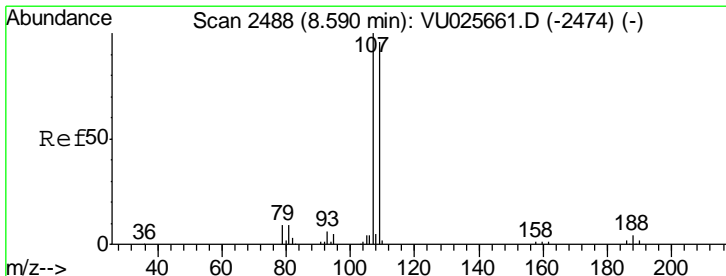
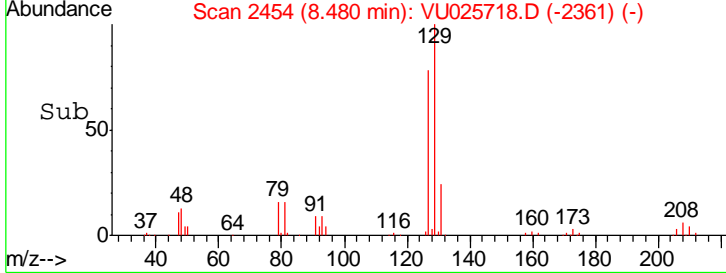
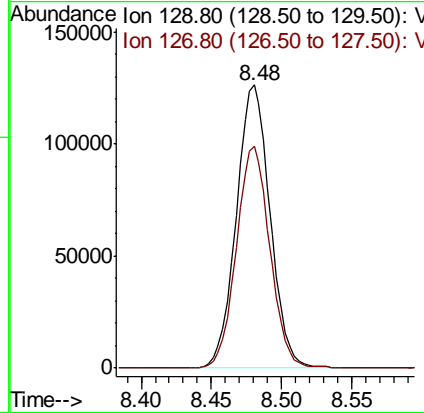
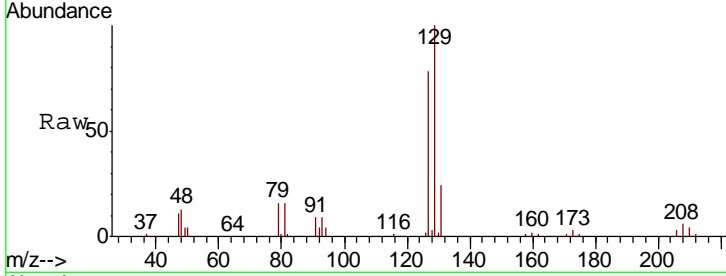
#60
 Dibromochloromethane
 Concen: 78.58 ug/l
 RT: 8.48 min Scan# 2454
 Delta R.T. -0.00 min
 Lab File: VU025718.D
 Acq: 30 Jul 2018 13:22

Instrument :
 MSVOA_U
 ClientSampled :
 1513

| Tgt Ion | Resp | Lower | Upper |
|---------|------|-------|-------|
| 129 | 100 | | |
| 127 | 77.8 | 38.6 | 115.8 |

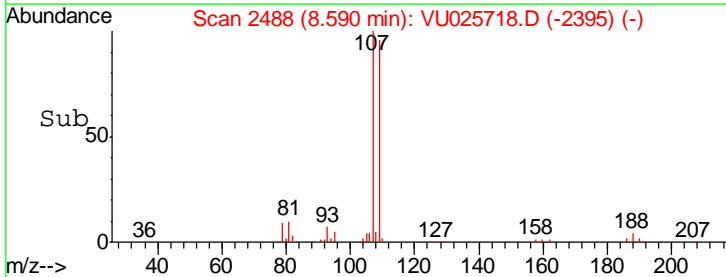
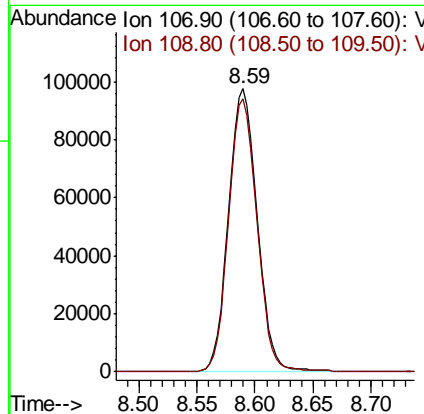
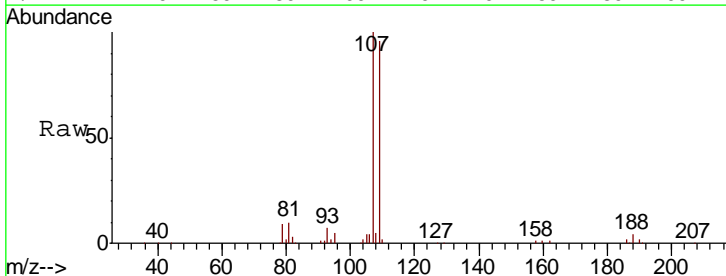
Manual Integrations
 APPROVED

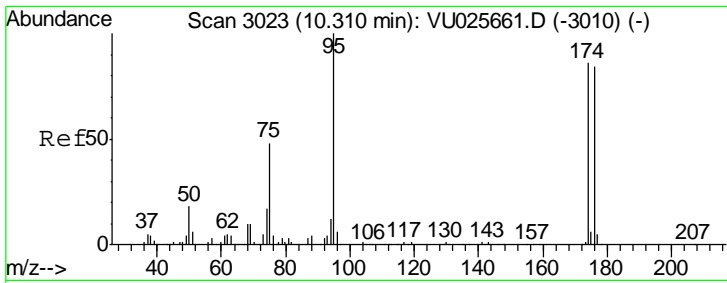
MMDadoda
 7/31/2018 1:23:30 PM



#61
 1,2-Dibromoethane
 Concen: 65.41 ug/l
 RT: 8.59 min Scan# 2488
 Delta R.T. 0.00 min
 Lab File: VU025718.D
 Acq: 30 Jul 2018 13:22

| Tgt Ion | Resp | Lower | Upper |
|---------|------|-------|-------|
| 107 | 100 | | |
| 109 | 95.5 | 75.8 | 113.8 |





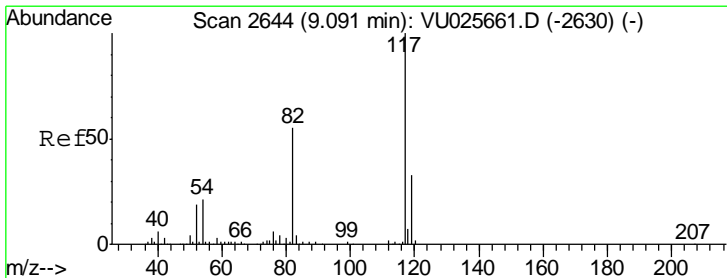
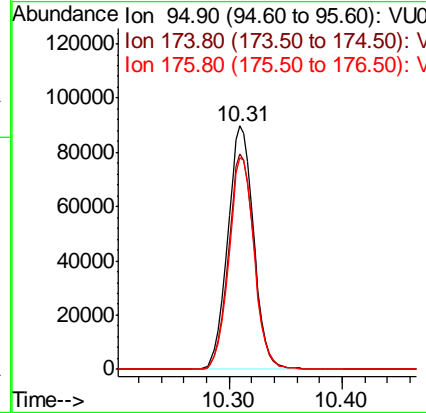
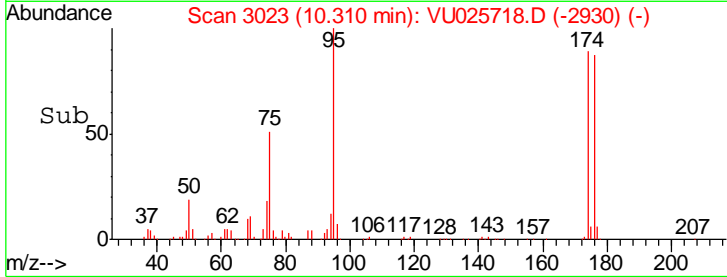
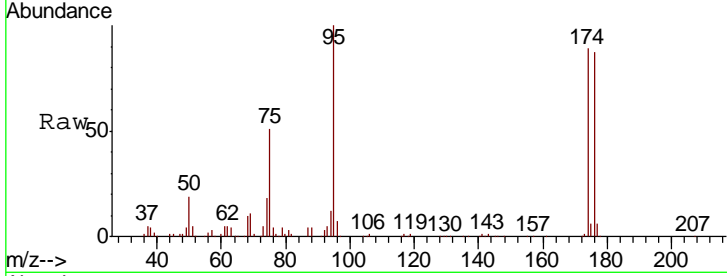
#62
 4-Bromofluorobenzene
 Concen: 46.45 ug/l
 RT: 10.31 min Scan# 3023
 Delta R.T. 0.00 min
 Lab File: VU025718.D
 Acq: 30 Jul 2018 13:22

Instrument : MSVOA_U
 Client Sampled : 1513

| Tgt Ion | Resp | Lower | Upper |
|---------|--------|-------|-------|
| 95 | 142602 | | |
| 174 | 87.7 | 0.0 | 172.2 |
| 176 | 85.0 | 0.0 | 162.6 |

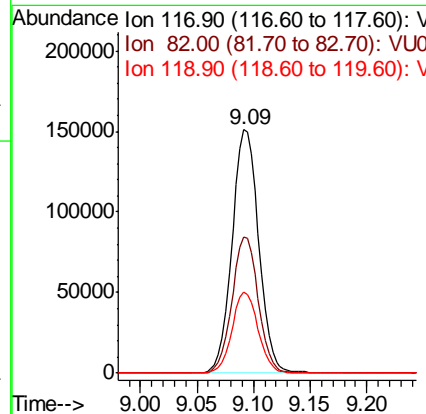
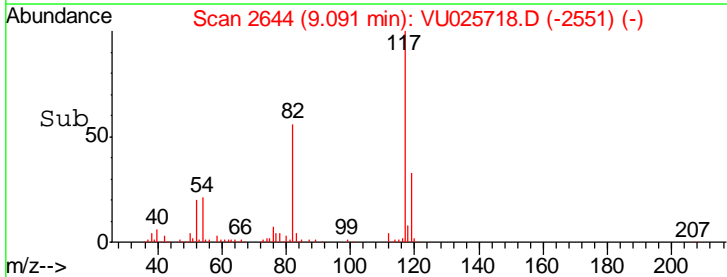
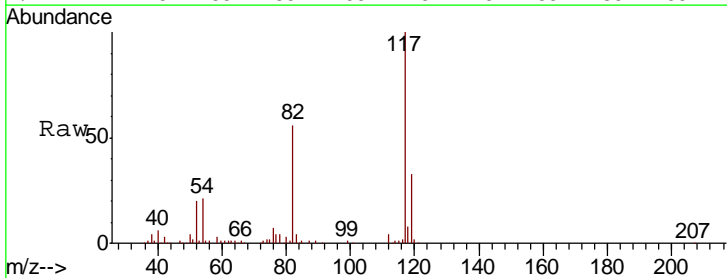
Manual Integrations
 APPROVED

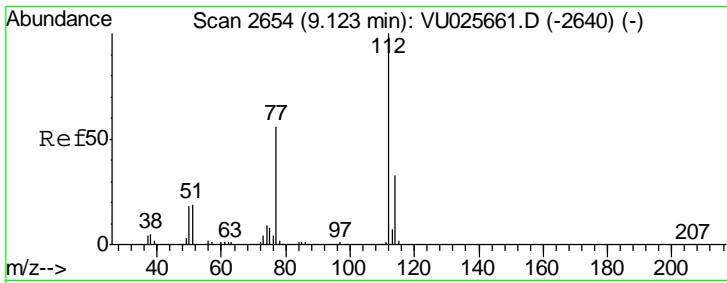
MMDadoda
 7/31/2018 1:23:30 PM



#63
 Chlorobenzene-d5
 Concen: 50.00 ug/l
 RT: 9.09 min Scan# 2644
 Delta R.T. 0.00 min
 Lab File: VU025718.D
 Acq: 30 Jul 2018 13:22

| Tgt Ion | Resp | Lower | Upper |
|---------|--------|-------|-------|
| 117 | 248137 | | |
| 82 | 56.1 | 46.0 | 69.0 |
| 119 | 33.1 | 26.0 | 39.0 |





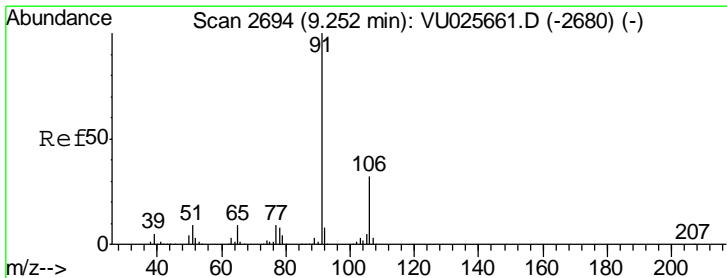
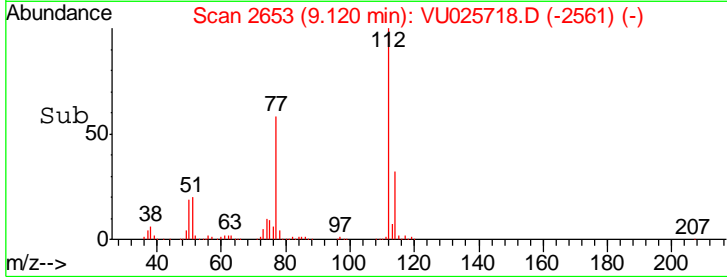
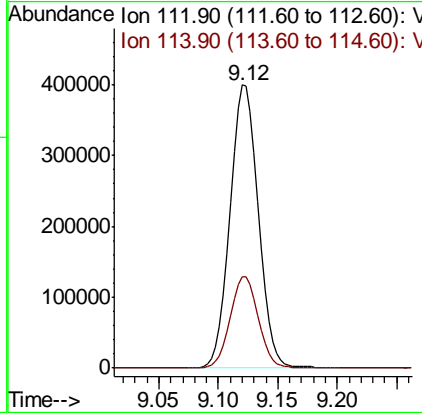
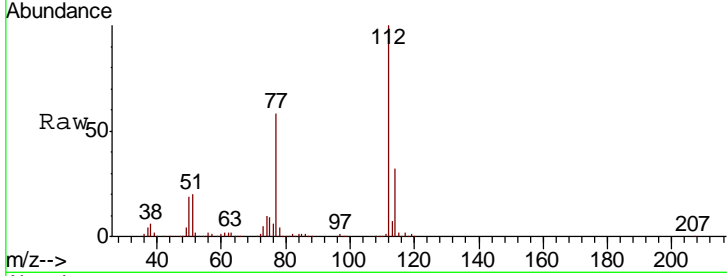
#65
 Chlorobenzene
 Concen: 103.20 ug/l
 RT: 9.12 min Scan# 2653
 Delta R.T. -0.00 min
 Lab File: VU025718.D
 Acq: 30 Jul 2018 13:22

Instrument :
 MSVOA_U
 ClientSampled :
 1513

| Tgt Ion | Resp | Lower | Upper |
|---------|------|-------|-------|
| 112 | 100 | | |
| 114 | 32.5 | 25.8 | 38.8 |

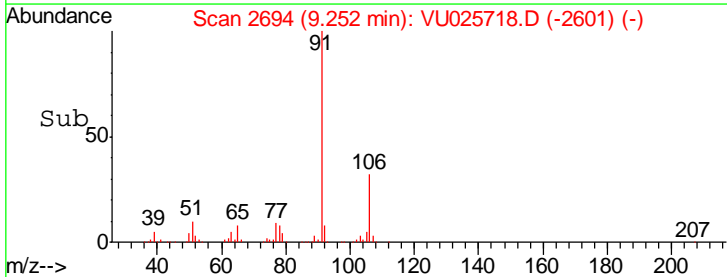
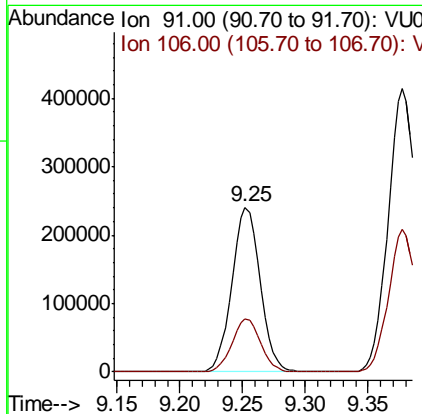
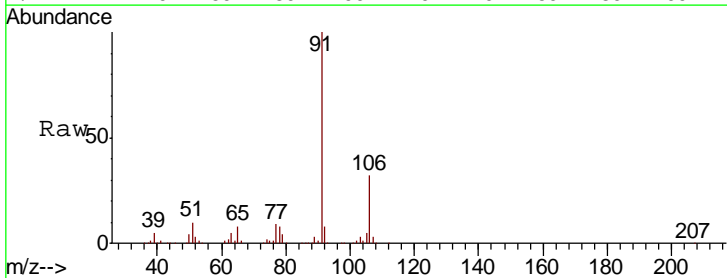
Manual Integrations
 APPROVED

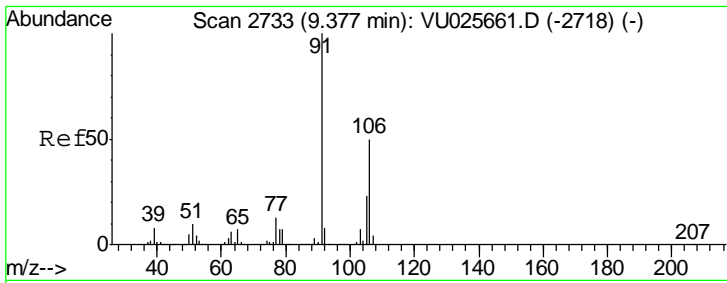
MMDadoda
 7/31/2018 1:23:30 PM



#67
 Ethyl Benzene
 Concen: 35.60 ug/l
 RT: 9.25 min Scan# 2694
 Delta R.T. 0.00 min
 Lab File: VU025718.D
 Acq: 30 Jul 2018 13:22

| Tgt Ion | Resp | Lower | Upper |
|---------|------|-------|-------|
| 91 | 100 | | |
| 106 | 31.8 | 25.3 | 37.9 |



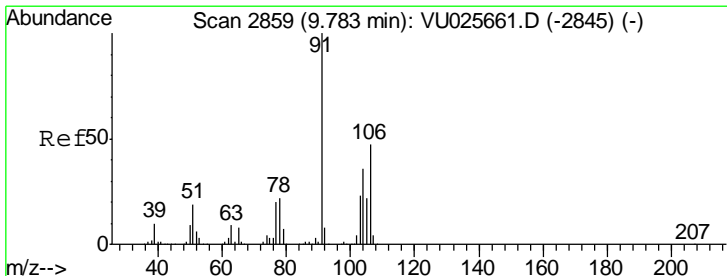
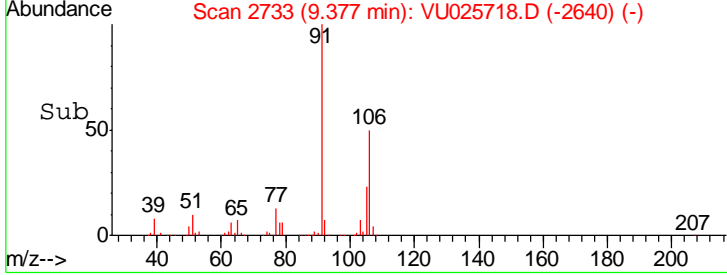
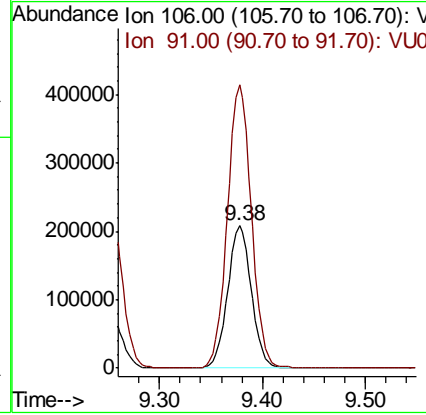
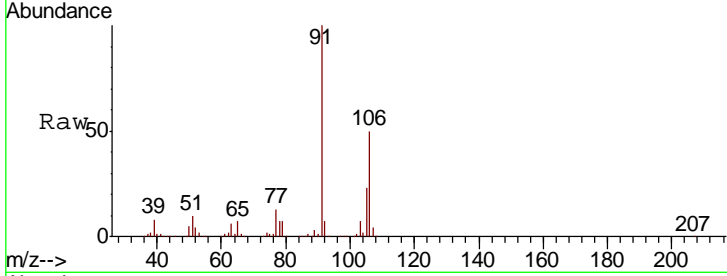


#68
 m/p-Xylenes
 Concen: 81.84 ug/l
 RT: 9.38 min Scan# 2733
 Delta R.T. 0.00 min
 Lab File: VU025718.D
 Acq: 30 Jul 2018 13:22

Instrument : MSVOA_U
 ClientSampled : 1513

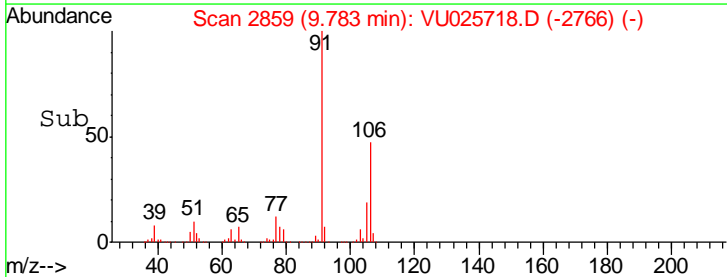
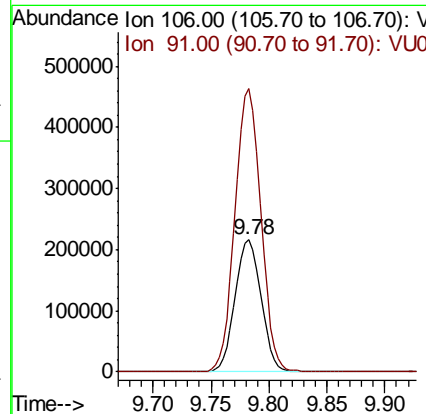
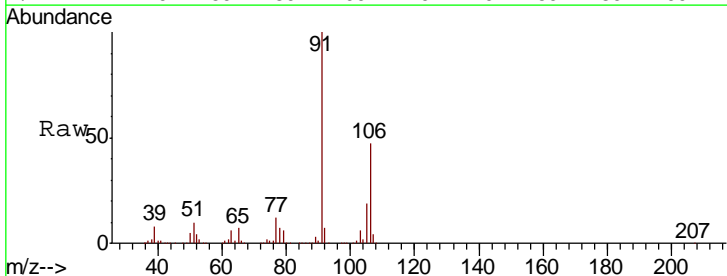
| Tgt Ion | Resp | Lower | Upper |
|---------|--------|-------|-------|
| 106 | 332965 | | |
| 106 | 100 | | |
| 91 | 201.6 | 162.3 | 243.5 |

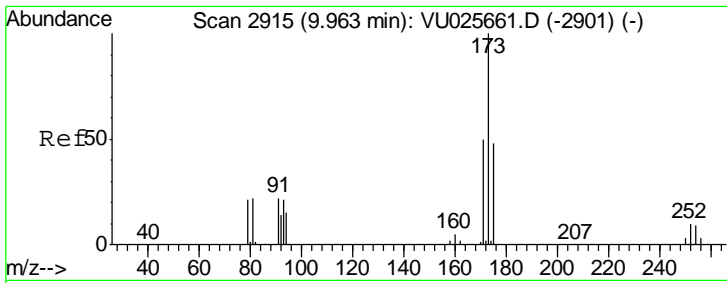
Manual Integrations APPROVED
 MMDadoda
 7/31/2018 1:23:30 PM



#69
 o-Xylene
 Concen: 84.64 ug/l
 RT: 9.78 min Scan# 2859
 Delta R.T. -0.00 min
 Lab File: VU025718.D
 Acq: 30 Jul 2018 13:22

| Tgt Ion | Resp | Lower | Upper |
|---------|--------|-------|-------|
| 106 | 336548 | | |
| 106 | 100 | | |
| 91 | 213.4 | 105.3 | 315.8 |





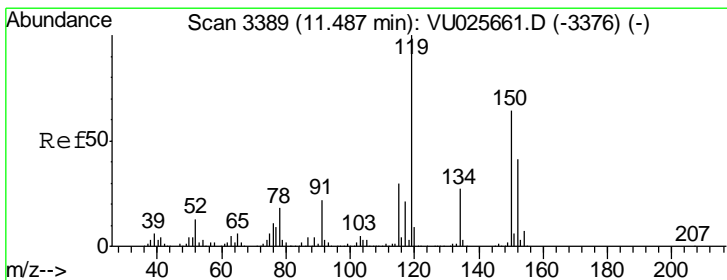
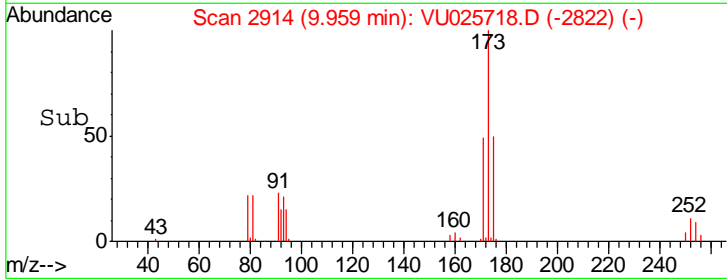
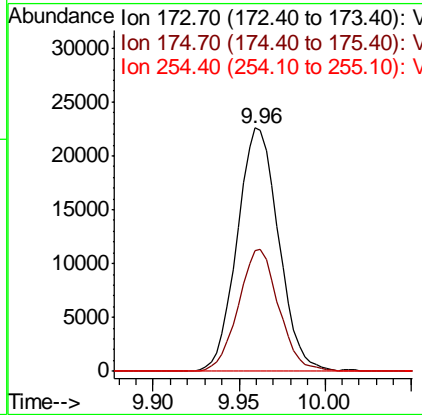
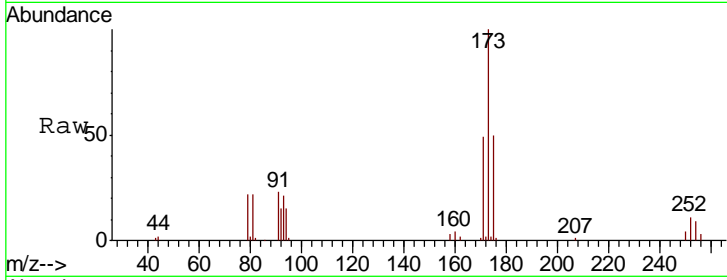
#71
 Bromoform
 Concen: 18.81 ug/l
 RT: 9.96 min Scan# 2914
 Delta R.T. -0.00 min
 Lab File: VU025718.D
 Acq: 30 Jul 2018 13:22

Instrument : MSVOA_U
 ClientSampled : 1513

| Tgt Ion | Resp | Lower | Upper |
|---------|-------|-------|-------|
| 173 | 37739 | | |
| 175 | 48.8 | 24.0 | 72.0 |
| 254 | 0.0 | 0.0 | 0.0 |

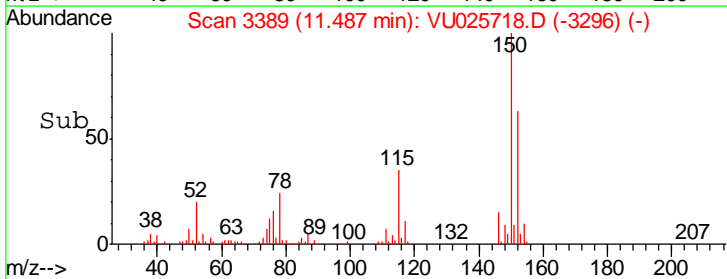
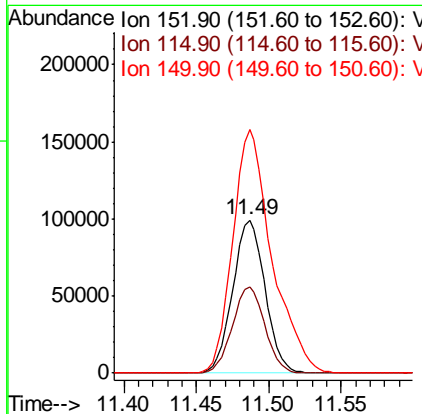
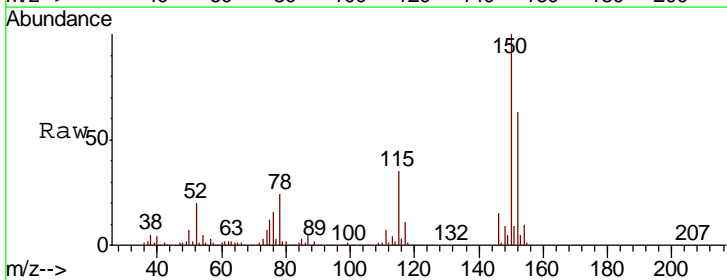
Manual Integrations
 APPROVED

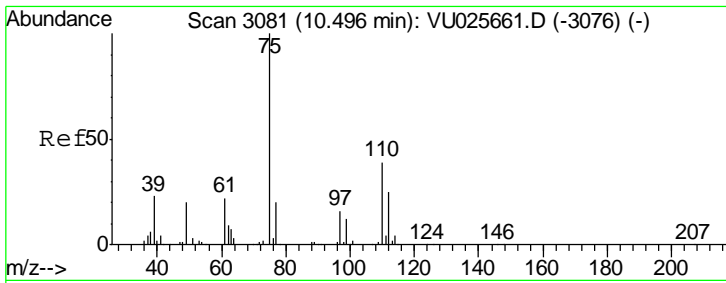
MMDadoda
 7/31/2018 1:23:30 PM



#72
 1,4-Dichlorobenzene-d4
 Concen: 50.00 ug/l
 RT: 11.49 min Scan# 3389
 Delta R.T. 0.00 min
 Lab File: VU025718.D
 Acq: 30 Jul 2018 13:22

| Tgt Ion | Resp | Lower | Upper |
|---------|--------|-------|-------|
| 152 | 153249 | | |
| 115 | 56.7 | 40.1 | 120.3 |
| 150 | 192.6 | 0.0 | 351.4 |



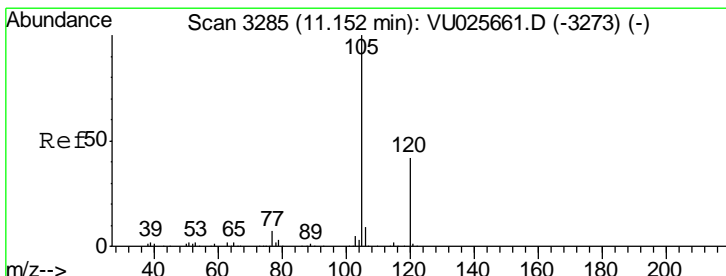
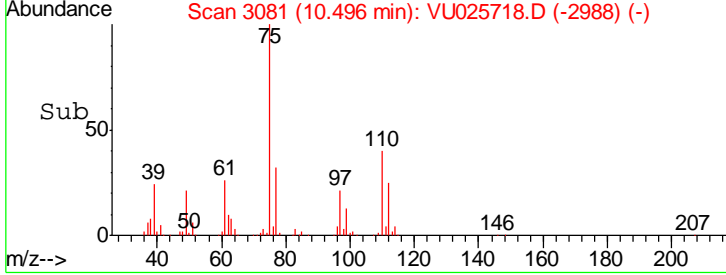
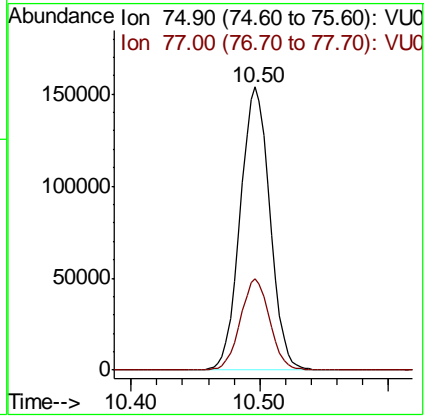
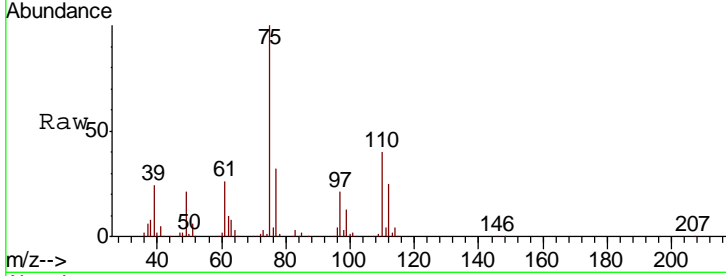


#76
 1,2,3-Trichloropropane
 Concen: 72.85 ug/l
 RT: 10.50 min Scan# 3081
 Delta R.T. -0.00 min
 Lab File: VU025718.D
 Acq: 30 Jul 2018 13:22

Instrument : MSVOA_U
 ClientSampled : 1513

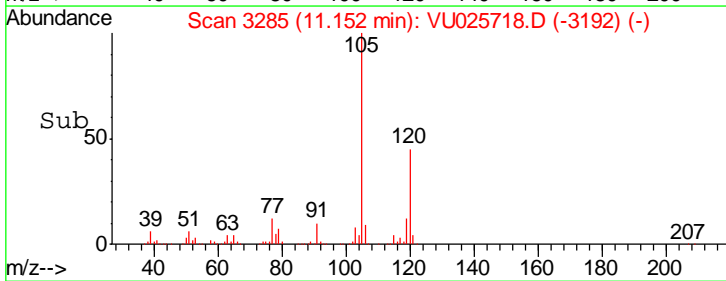
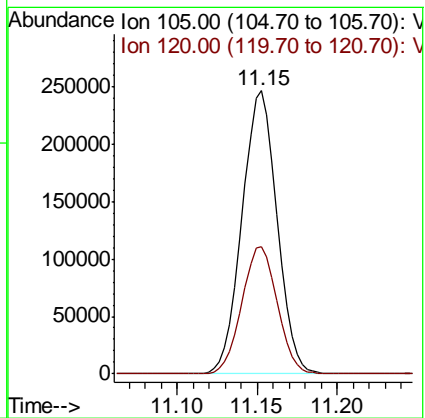
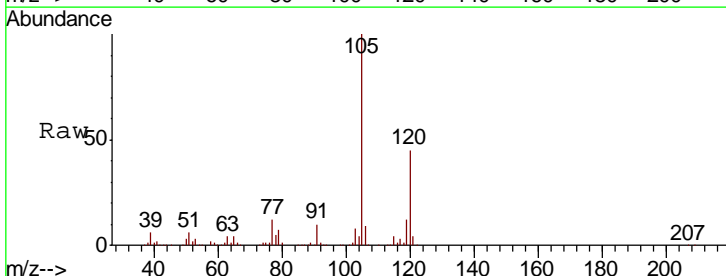
| Tgt Ion | Resp | Lower | Upper |
|---------|------|-------|-------|
| 75 | 100 | | |
| 77 | 32.0 | 20.4 | 61.3 |

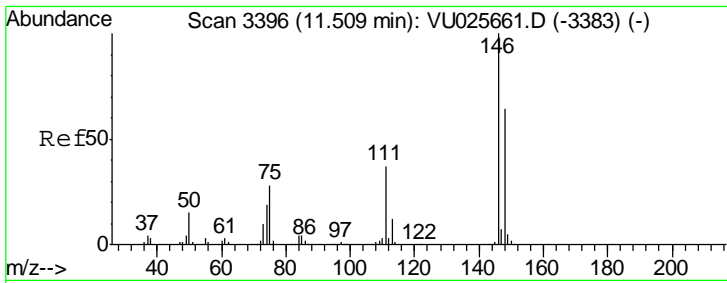
Manual Integrations APPROVED
 MMDadoda
 7/31/2018 1:23:30 PM



#84
 1,2,4-Trimethylbenzene
 Concen: 40.82 ug/l
 RT: 11.15 min Scan# 3285
 Delta R.T. -0.00 min
 Lab File: VU025718.D
 Acq: 30 Jul 2018 13:22

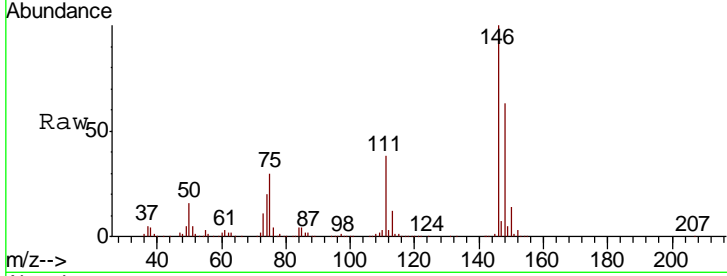
| Tgt Ion | Resp | Lower | Upper |
|---------|------|-------|-------|
| 105 | 100 | | |
| 120 | 45.6 | 22.3 | 66.8 |





#88
 1,4-Dichlorobenzene
 Concen: 95.33 ug/l
 RT: 11.51 min Scan# 3396
 Delta R.T. -0.00 min
 Lab File: VU025718.D
 Acq: 30 Jul 2018 13:22

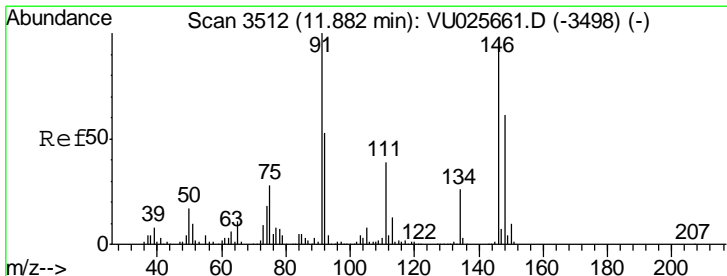
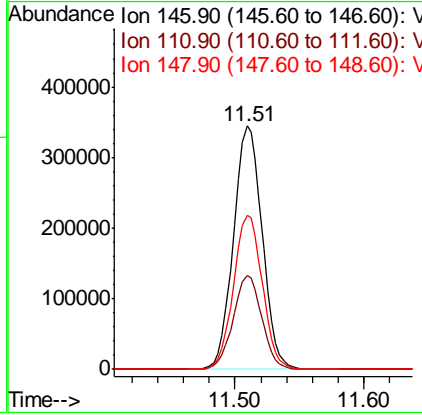
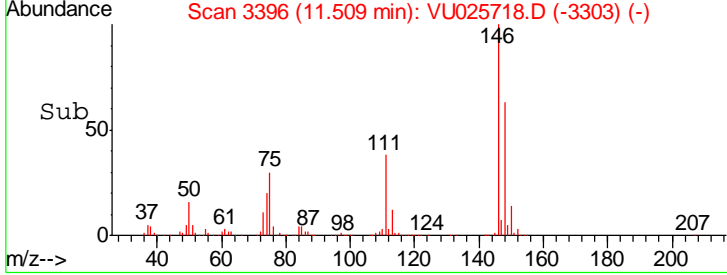
Instrument : MSVOA_U
 Client Sampled : 1513



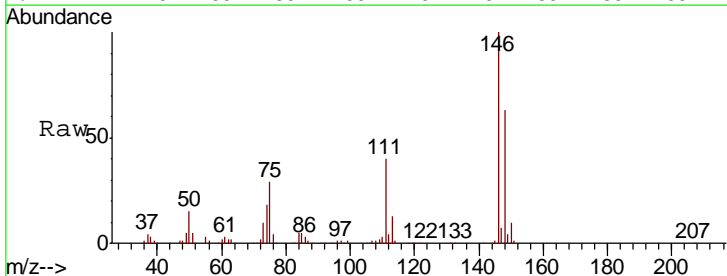
| Tgt Ion | Resp | Lower | Upper |
|---------|------|-------|-------|
| 146 | 100 | | |
| 111 | 38.4 | 19.4 | 58.1 |
| 148 | 63.4 | 31.7 | 95.1 |

Manual Integrations
 APPROVED

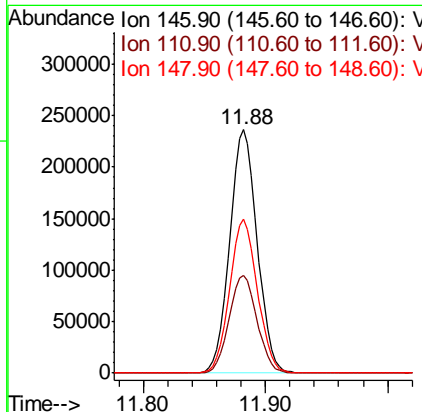
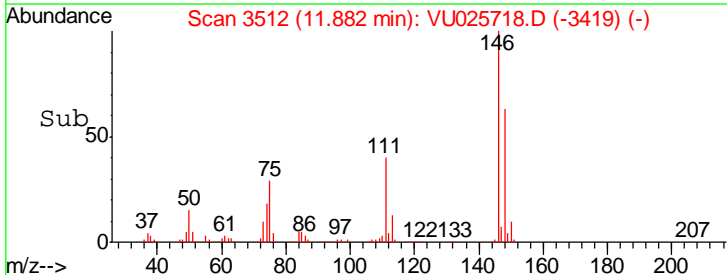
MMDadoda
 7/31/2018 1:23:30 PM

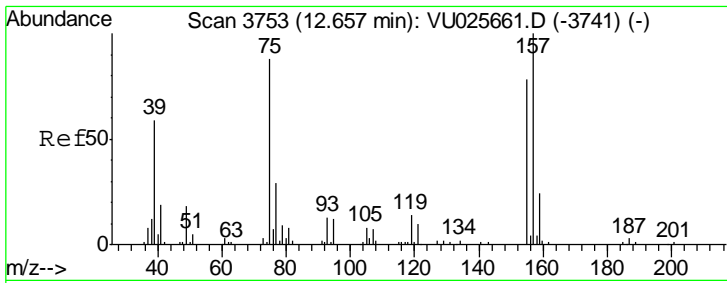


#91
 1,2-Dichlorobenzene
 Concen: 70.70 ug/l
 RT: 11.88 min Scan# 3512
 Delta R.T. 0.00 min
 Lab File: VU025718.D
 Acq: 30 Jul 2018 13:22



| Tgt Ion | Resp | Lower | Upper |
|---------|------|-------|-------|
| 146 | 100 | | |
| 111 | 40.8 | 20.6 | 61.8 |
| 148 | 63.8 | 31.5 | 94.5 |





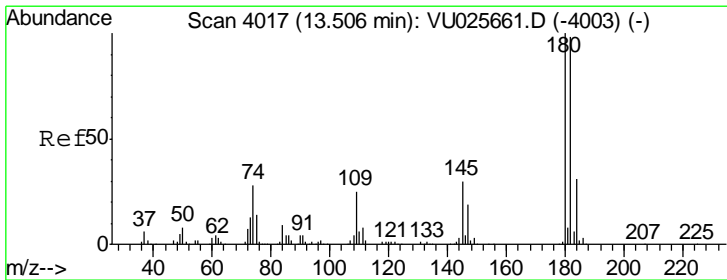
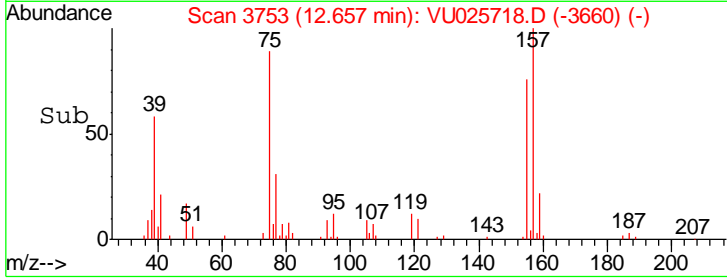
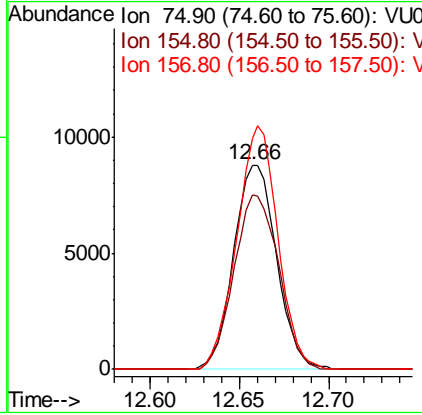
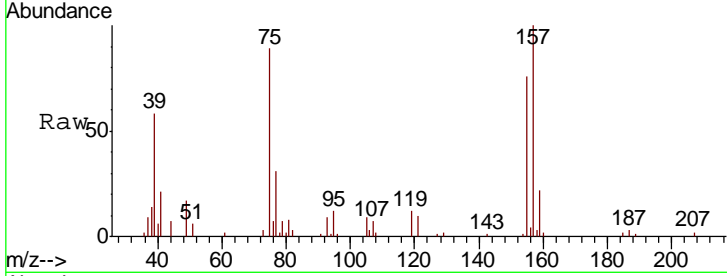
#92
 1,2-Dibromo-3-Chloropropane
 Concen: 17.16 ug/l
 RT: 12.66 min Scan# 3753
 Delta R.T. -0.00 min
 Lab File: VU025718.D
 Acq: 30 Jul 2018 13:22

Instrument : MSVOA_U
 ClientSampled : 1513

| Tgt Ion | Resp | Lower | Upper |
|---------|-------|-------|-------|
| 75 | 14714 | | |
| 75 | 100 | | |
| 155 | 88.9 | 44.5 | 133.3 |
| 157 | 113.7 | 57.0 | 170.8 |

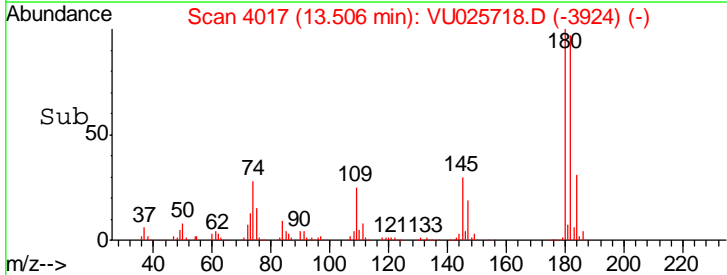
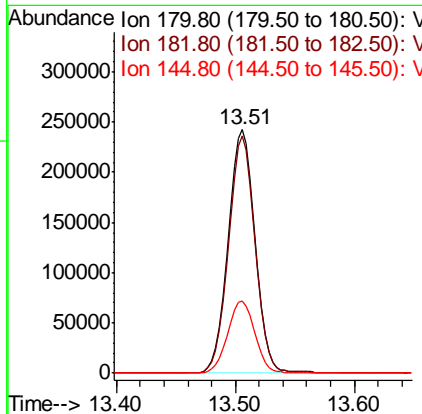
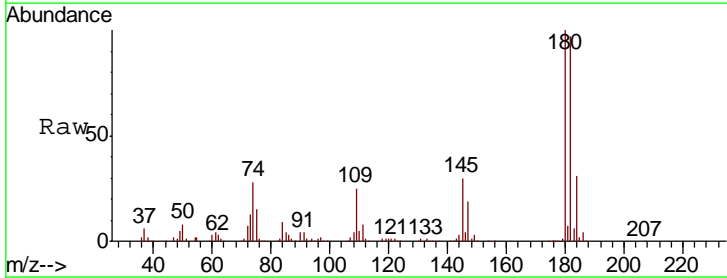
Manual Integrations
 APPROVED

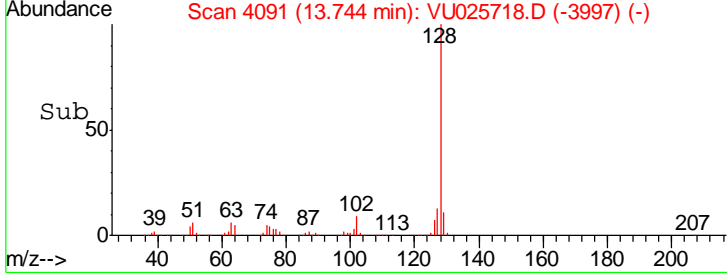
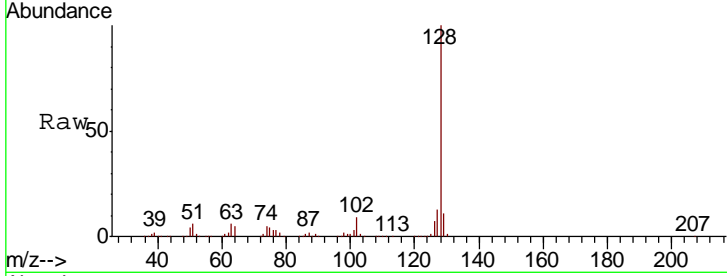
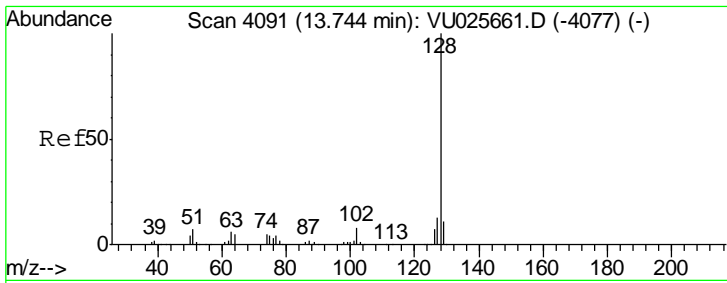
MMDadoda
 7/31/2018 1:23:30 PM



#93
 1,2,4-Trichlorobenzene
 Concen: 107.08 ug/l
 RT: 13.51 min Scan# 4017
 Delta R.T. 0.00 min
 Lab File: VU025718.D
 Acq: 30 Jul 2018 13:22

| Tgt Ion | Resp | Lower | Upper |
|---------|--------|-------|-------|
| 180 | 379357 | | |
| 180 | 100 | | |
| 182 | 96.3 | 47.3 | 141.9 |
| 145 | 30.1 | 14.9 | 44.7 |





#95
 Naphthalene
 Concen: 111.13 ug/l
 RT: 13.74 min Scan# 4091
 Delta R.T. 0.00 min
 Lab File: VU025718.D
 Acq: 30 Jul 2018 13:22

Tot Ion:128 Resp: 1282457

| Ion | Ratio | Lower | Upper |
|-----|-------|-------|-------|
| 128 | 100 | | |
| 127 | 12.8 | 10.5 | 15.7 |
| 129 | 10.8 | 8.3 | 12.5 |

Instrument : MSVOA_U
 ClientSampled : 1513

Manual Integrations
APPROVED
 MMDadoda
 7/31/2018 1:23:30 PM

