

Data Path : Z:\VOASRV\HPCHEM1\MSVOA U\DATA\VU073020\  
 Data File : VU039721.D  
 Acq On : 30 Jul 2020 13:58  
 Operator : SY/MD  
 Sample : L3319-10DL 5X  
 Misc : 25.0mL/MSVOA U/WATER  
 ALS Vial : 6 Sample Multiplier: 1

Instrument :  
 MSVOA\_U  
 ClientSampleId :  
 PT-ADD-WSDL

Quant Time: Jul 31 07:15:21 2020  
 Quant Method : Z:\VOASRV\HPCHEM1\MSVOA U\METHOD\524U072920DW.M  
 Quant Title : METHOD 524.2 VOLATILES DRINKING WATER  
 QLast Update : Thu Jul 30 13:49:19 2020  
 Response via : Initial Calibration

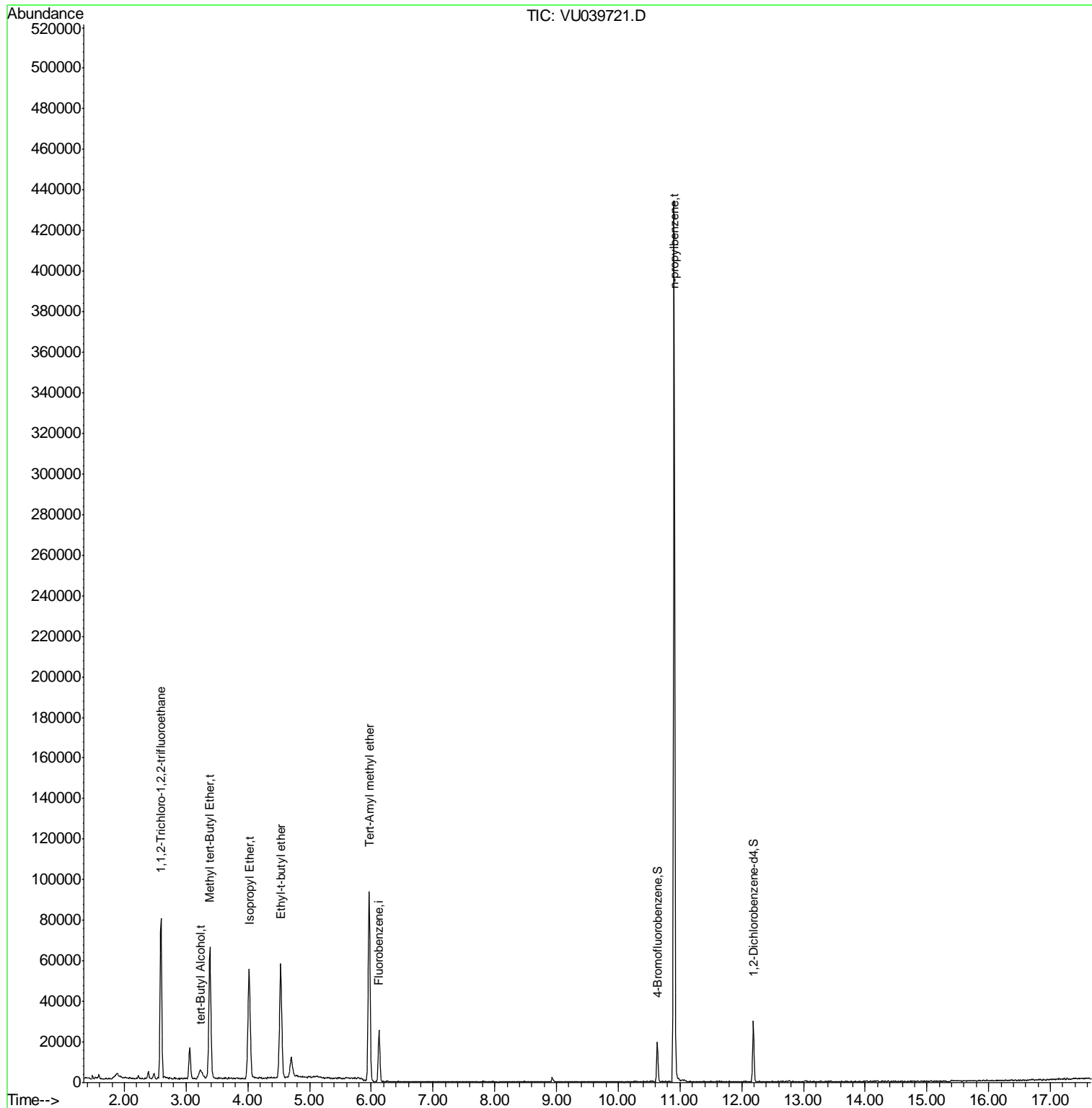
Internal Standards	R.T.	QIon	Response	Conc	Units	Dev(Min)
1) Fluorobenzene	6.12	96	20850	1.00	ug/l	0.00
System Monitoring Compounds						
57) 4-Bromofluorobenzene	10.63	95	6280	0.77	ug/l	0.00
Spiked Amount	1.000		Recovery	=	77.00%	
68) 1,2-Dichlorobenzene-d4	12.19	152	6784	0.85	ug/l	0.00
Spiked Amount	1.000		Recovery	=	85.00%	
Target Compounds						
					Ovalue	
8) 1,1,2-Trichloro-1,2,2-trif	2.59	101	30892	4.906	ug/l	100
24) tert-Butyl Alcohol	3.23	59	8093	3.426	ug/l #	1
25) Methyl tert-Butyl Ether	3.39	73	64765	3.426	ug/l	100
31) Isopropyl Ether	4.02	45	59220	2.245	ug/l	100
32) Ethyl-t-butyl ether	4.53	59	55323	2.465	ug/l	100
33) Tert-Amyl methyl ether	5.97	73	70436	4.352	ug/l	98
73) n-propylbenzene	10.91	120	65141	8.126	ug/l	93

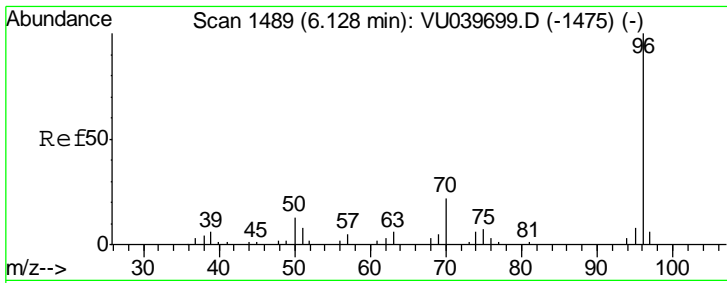
(#) = qualifier out of range (m) = manual integration (+) = signals summed

Data Path : Z:\VOASRV\HPCHEM1\MSVOA U\DATA\VU073020\  
Data File : VU039721.D  
Acq On : 30 Jul 2020 13:58  
Operator : SY/MD  
Sample : L3319-10DL 5X  
Misc : 25.0mL/MSVOA U/WATER  
ALS Vial : 6 Sample Multiplier: 1

Instrument :  
MSVOA\_U  
ClientSampled :  
PT-ADD-WSDL

Quant Time: Jul 31 07:15:21 2020  
Quant Method : Z:\VOASRV\HPCHEM1\MSVOA U\METHOD\524U072920DW.M  
Quant Title : METHOD 524.2 VOLATILES DRINKING WATER  
QLast Update : Thu Jul 30 13:49:19 2020  
Response via : Initial Calibration

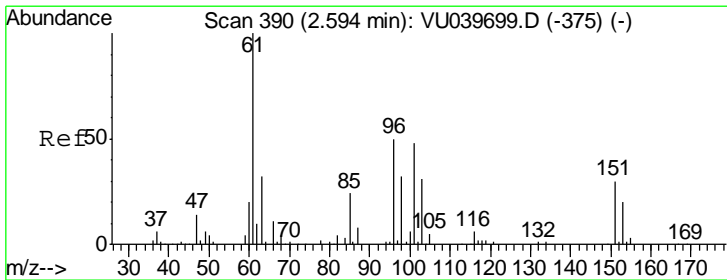
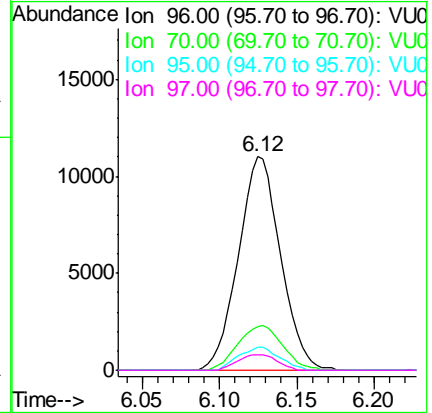
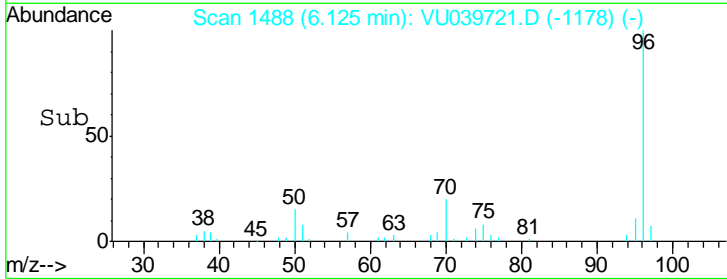
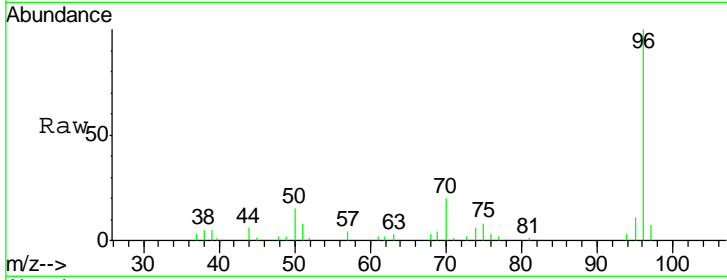




#1  
 Fluorobenzene  
 Concen: 1.000 ug/l  
 RT: 6.12 min Scan# 1488  
 Delta R.T. -0.00 min  
 Lab File: VU039721.D  
 Acq: 30 Jul 2020 13:58

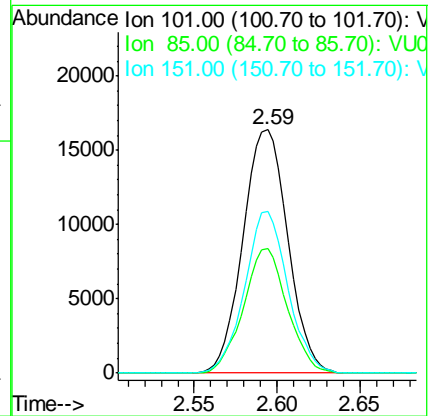
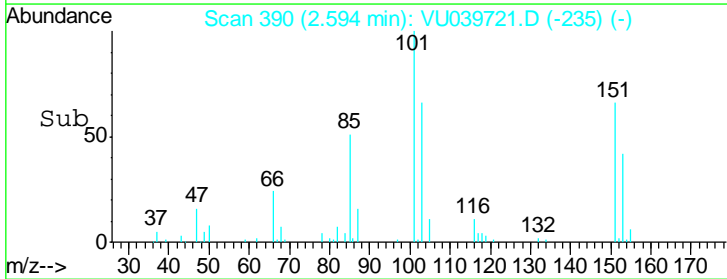
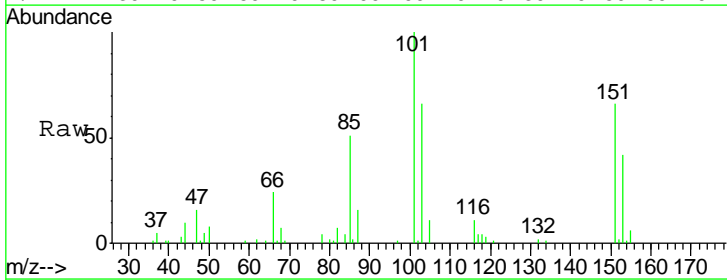
Instrument : MSVOA\_U  
 ClientSampled : PT-ADD-WSDL

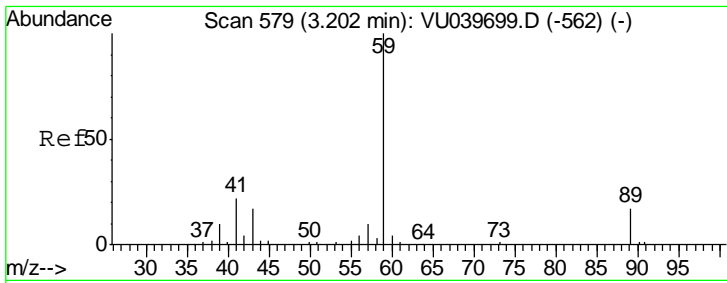
Tgt Ion	Resp	Lower	Upper
96	20850		
70	22.3	16.3	24.5
95	10.3	6.8	10.2#
97	6.7	0.0	0.0#



#8  
 1,1,2-Trichloro-1,2,2-trifluoroethane  
 Concen: 4.906 ug/l  
 RT: 2.59 min Scan# 390  
 Delta R.T. -0.00 min  
 Lab File: VU039721.D  
 Acq: 30 Jul 2020 13:58

Tgt Ion	Resp	Lower	Upper
101	30892		
85	50.0	39.9	59.9
151	64.0	51.0	76.4

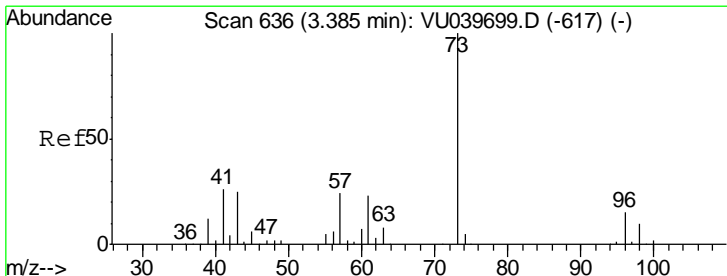
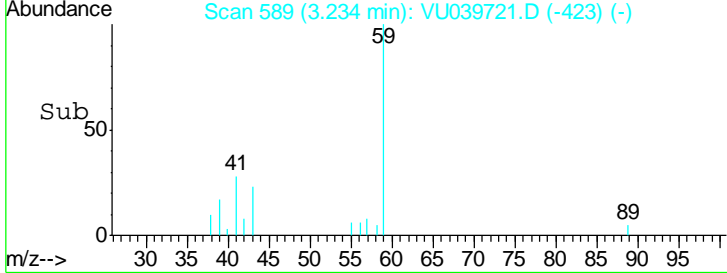
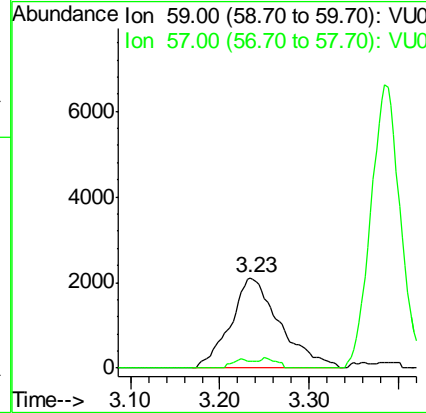
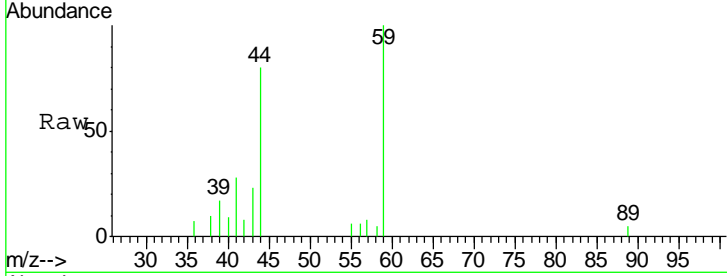




#24  
 tert-Butyl Alcohol  
 Concen: 3.426 ug/l  
 RT: 3.23 min Scan# 589  
 Delta R.T. 0.03 min  
 Lab File: VU039721.D  
 Acq: 30 Jul 2020 13:58

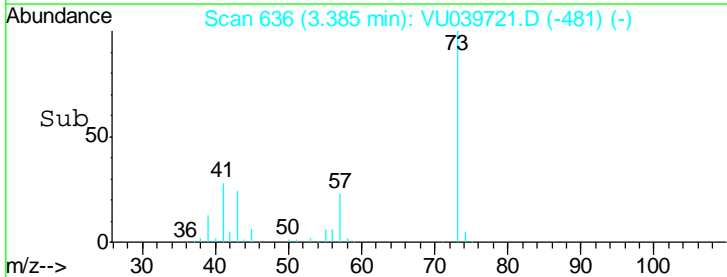
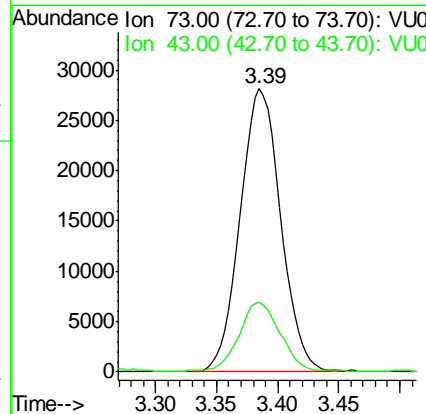
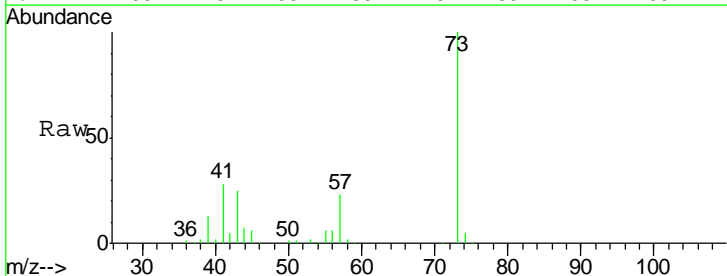
Instrument : MSVOA\_U  
 ClientSampled : PT-ADD-WSDL

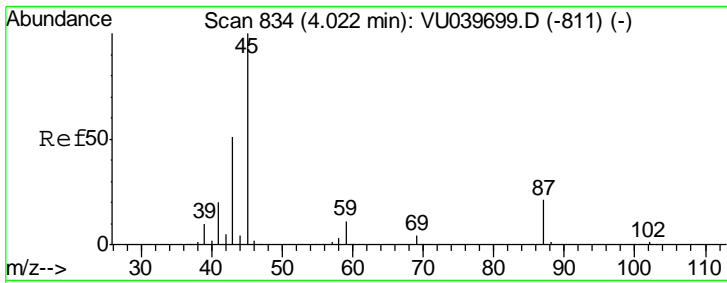
Tgt Ion: 59 Resp: 8093  
 Ion Ratio Lower Upper  
 59 100  
 57 187.0 7.8 11.6#



#25  
 Methyl tert-Butyl Ether  
 Concen: 3.426 ug/l  
 RT: 3.39 min Scan# 636  
 Delta R.T. -0.00 min  
 Lab File: VU039721.D  
 Acq: 30 Jul 2020 13:58

Tgt Ion: 73 Resp: 64765  
 Ion Ratio Lower Upper  
 73 100  
 43 25.3 20.1 30.1

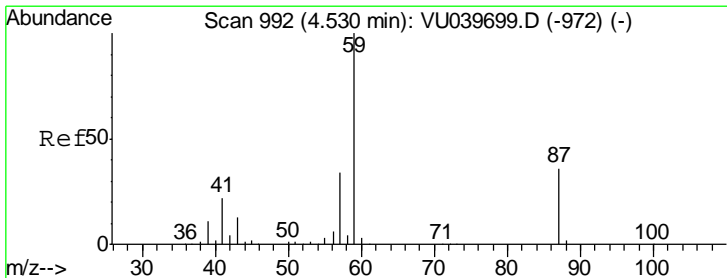
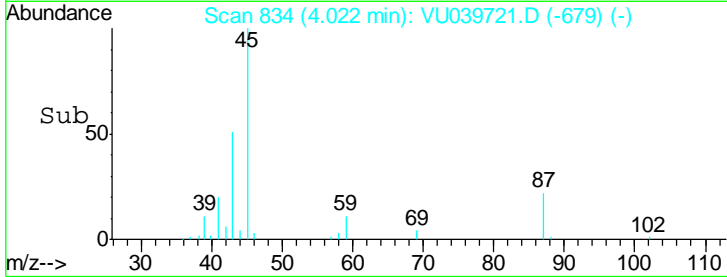
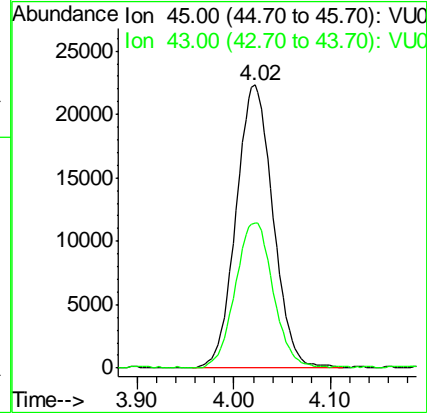
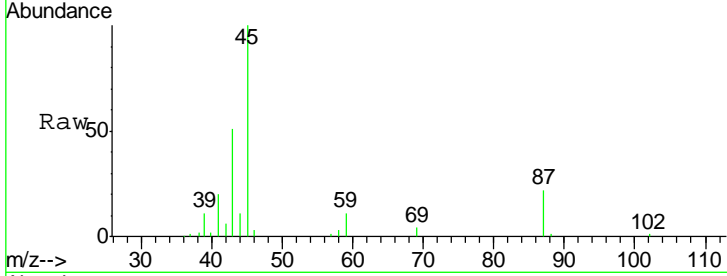




#31  
 Isopropyl Ether  
 Concen: 2.245 ug/l  
 RT: 4.02 min Scan# 834  
 Delta R.T. -0.00 min  
 Lab File: VU039721.D  
 Acq: 30 Jul 2020 13:58

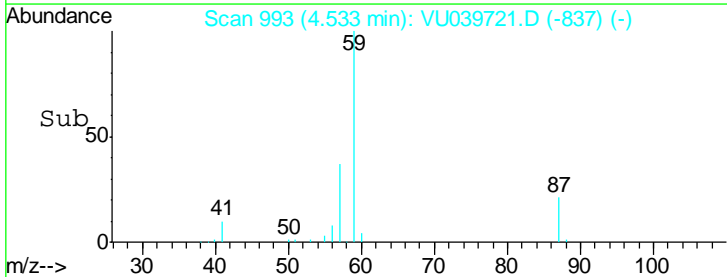
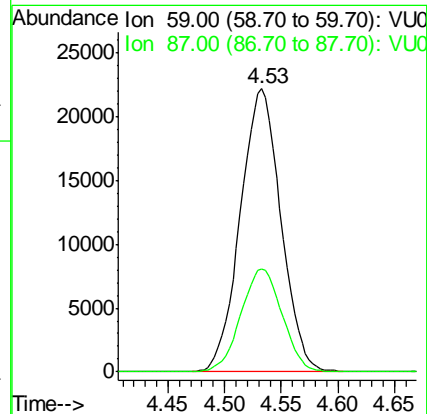
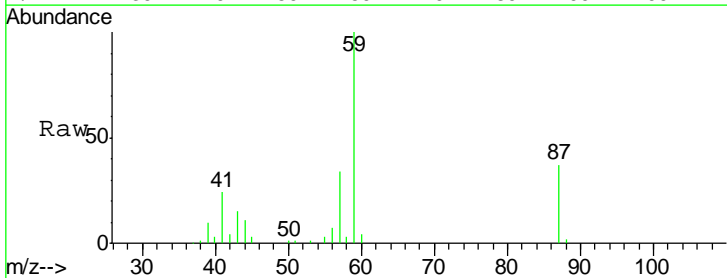
Instrument : MSVOA\_U  
 ClientSampled : PT-ADD-WSDL

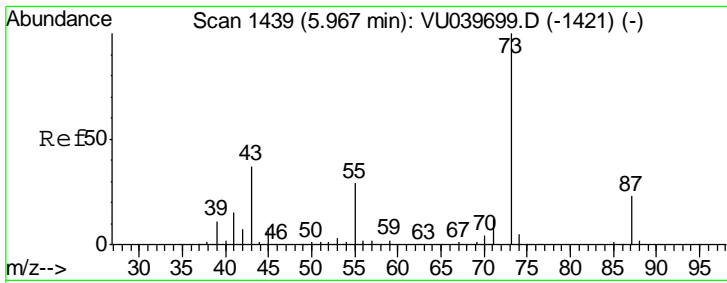
Tgt Ion: 45 Resp: 59220  
 Ion Ratio Lower Upper  
 45 100  
 43 52.8 26.5 79.4



#32  
 Ethyl-t-butyl ether  
 Concen: 2.465 ug/l  
 RT: 4.53 min Scan# 993  
 Delta R.T. 0.00 min  
 Lab File: VU039721.D  
 Acq: 30 Jul 2020 13:58

Tgt Ion: 59 Resp: 55323  
 Ion Ratio Lower Upper  
 59 100  
 87 36.9 29.4 44.0

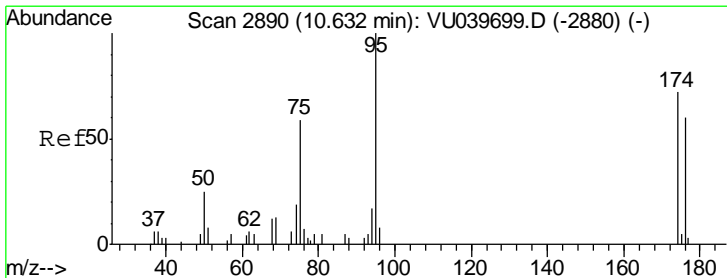
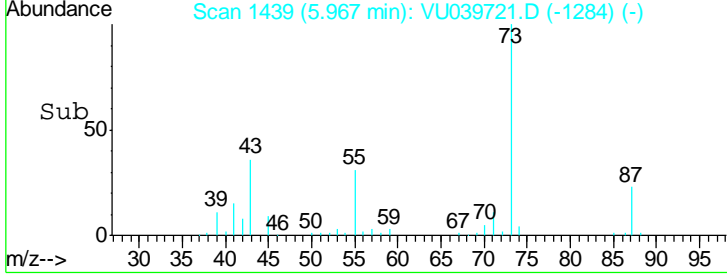
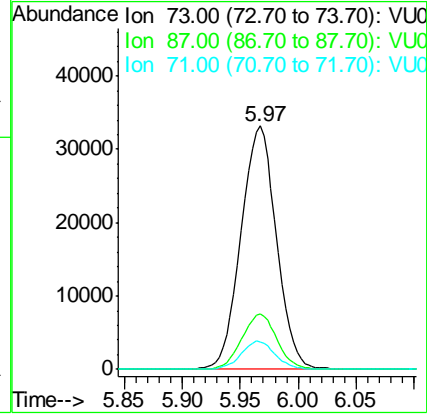
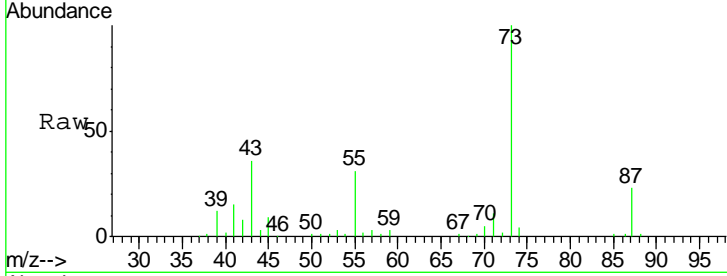




#33  
 Tert-Amvl methyl ether  
 Concen: 4.352 ug/l  
 RT: 5.97 min Scan# 1439  
 Delta R.T. -0.00 min  
 Lab File: VU039721.D  
 Acq: 30 Jul 2020 13:58

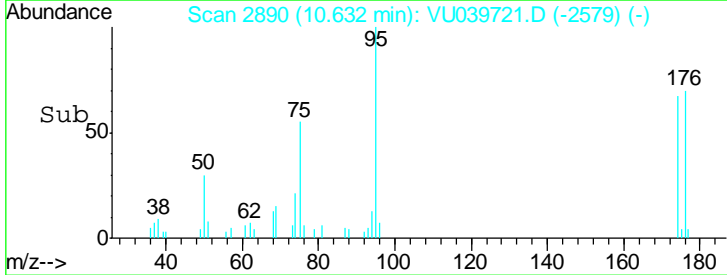
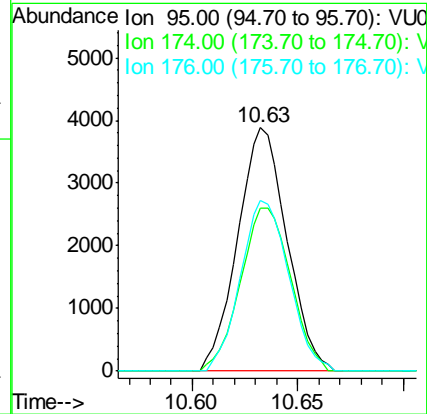
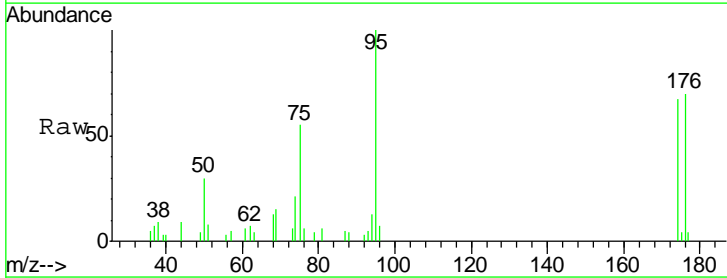
Instrument :  
 MSVOA\_U  
 ClientSampled :  
 PT-ADD-WSDL

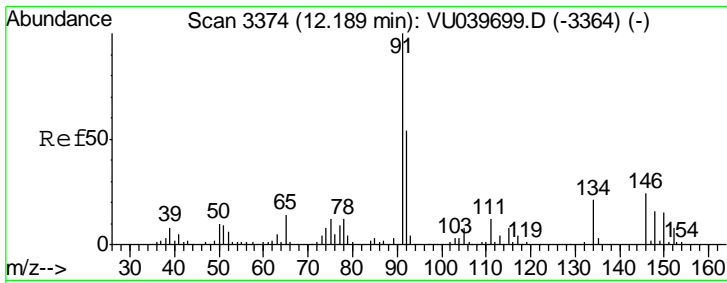
Tgt Ion	Resp	Lower	Upper
73	100		
87	22.4	18.7	28.1
71	11.2	9.1	13.7



#57  
 4-Bromofluorobenzene  
 Concen: 0.771 ug/l  
 RT: 10.63 min Scan# 2890  
 Delta R.T. -0.00 min  
 Lab File: VU039721.D  
 Acq: 30 Jul 2020 13:58

Tgt Ion	Resp	Lower	Upper
95	100		
174	68.4	57.0	85.4
176	68.7	50.2	75.2

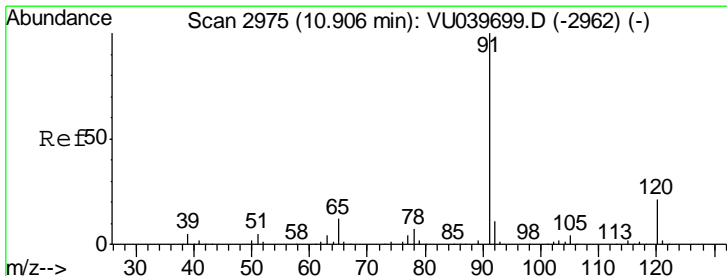
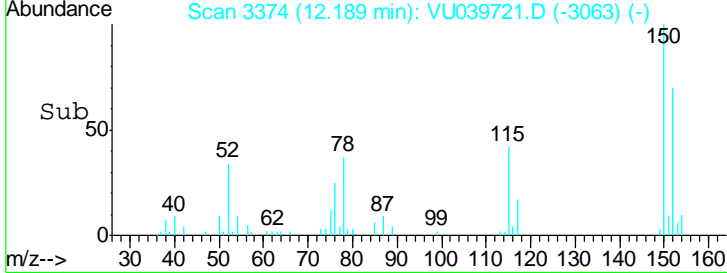
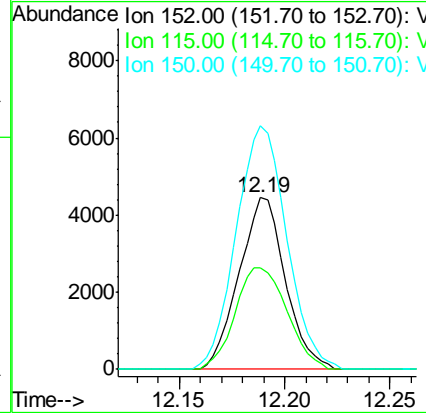
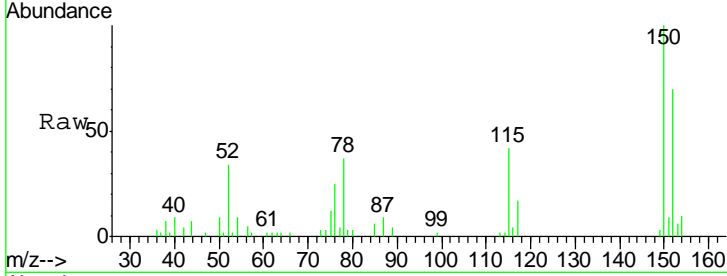




#68  
 1,2-Dichlorobenzene-d4  
 Concen: 0.851 ug/l  
 RT: 12.19 min Scan# 3374  
 Delta R.T. -0.00 min  
 Lab File: VU039721.D  
 Acq: 30 Jul 2020 13:58

Instrument : MSVOA\_U  
 ClientSampleID : PT-ADD-WSDL

Tgt Ion	Resp	Lower	Upper
152	6784		
115	66.0	0.0	302.4
150	154.8	0.0	645.8



#73  
 n-propylbenzene  
 Concen: 8.126 ug/l  
 RT: 10.91 min Scan# 2975  
 Delta R.T. -0.00 min  
 Lab File: VU039721.D  
 Acq: 30 Jul 2020 13:58

Tgt Ion	Resp	Lower	Upper
120	65141		
120	100		
91	482.1	371.7	557.5

