

Data Path : Z:\VOASRV\HPCHEM1\MSVOA U\DATA\VU073020\
 Data File : VU039723.D
 Acq On : 30 Jul 2020 15:12
 Operator : SY/MD
 Sample : L3319-08DL 5X
 Misc : 25.0mL/MSVOA U/WATER
 ALS Vial : 8 Sample Multiplier: 1

Instrument :
 MSVOA_U
 ClientSampleId :
 PT-UNRVOA-WSDL

Quant Time: Jul 31 07:19:44 2020
 Quant Method : Z:\VOASRV\HPCHEM1\MSVOA U\METHOD\524U072920DW.M
 Quant Title : METHOD 524.2 VOLATILES DRINKING WATER
 QLast Update : Thu Jul 30 13:49:19 2020
 Response via : Initial Calibration

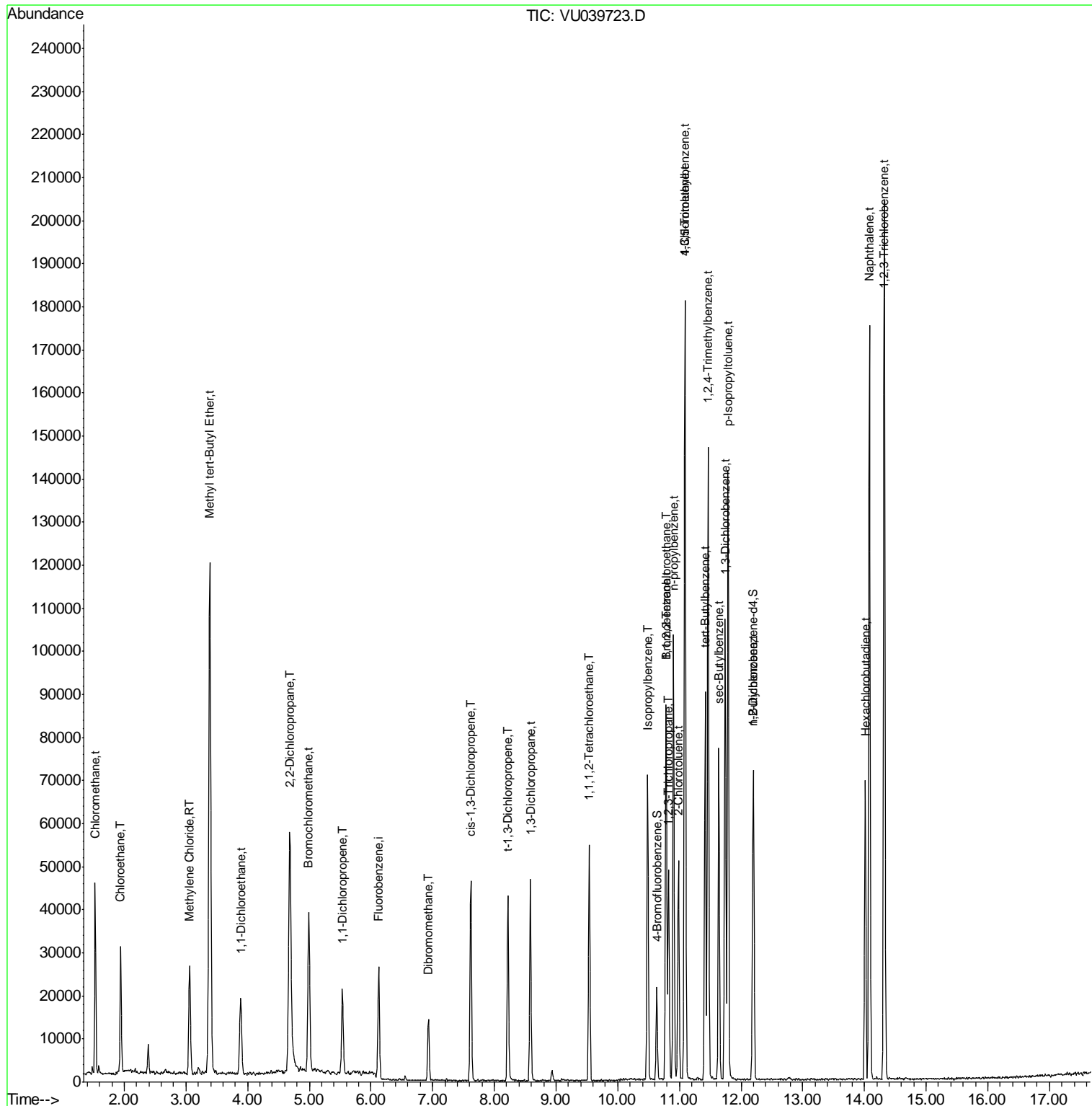
Internal Standards	R.T.	QIon	Response	Conc	Units	Dev(Min)
1) Fluorobenzene	6.13	96	21966	1.00	ug/l	0.00
System Monitoring Compounds						
57) 4-Bromofluorobenzene	10.63	95	6671	0.78	ug/l	0.00
Spiked Amount	1.000		Recovery	=	78.00%	
68) 1,2-Dichlorobenzene-d4	12.19	152	7560	0.90	ug/l	0.00
Spiked Amount	1.000		Recovery	=	90.00%	
Target Compounds						
						Ovalue
3) Chloromethane	1.53	50	34433	3.631	ug/l	98
6) Chloroethane	1.94	64	19137	3.156	ug/l	98
15) Methylene Chloride	3.06	84	9910	1.165	ug/l	97
17) 1,1-Dichloroethane	3.89	63	20200	1.326	ug/l	99
21) 2,2-Dichloropropane	4.68	77	34122	2.745	ug/l	95
25) Methyl tert-Butyl Ether	3.39	73	122719	6.162	ug/l	100
26) Bromochloromethane	4.99	128	8712	2.847	ug/l	98
29) 1,1-Dichloropropene	5.54	75	8916	0.802	ug/l	97
43) Dibromomethane	6.93	93	5941	1.457	ug/l	99
50) t-1,3-Dichloropropene	8.22	75	21043	2.500	ug/l	97
51) cis-1,3-Dichloropropene	7.62	75	23221	2.347	ug/l	97
53) 1,3-Dichloropropane	8.58	76	23371	2.298	ug/l	97
60) 1,1,1,2-Tetrachloroethane	9.54	131	12775	2.240	ug/l	95
69) Isopropylbenzene	10.48	105	40615	1.352	ug/l	100
70) 1,1,2,2-Tetrachloroethane	10.78	83	26195	3.436	ug/l	99
71) 1,2,3-Trichloropropane	10.83	75	18768	3.268	ug/l	91
72) Bromobenzene	10.78	156	7225	1.059	ug/l	97
73) n-propylbenzene	10.91	120	15500	1.835	ug/l	94
74) 2-Chlorotoluene	10.99	126	7864	1.102	ug/l	86
75) 1,3,5-Trimethylbenzene	11.09	105	65558	2.525	ug/l	100
76) 4-Chlorotoluene	11.10	126	12096	1.637	ug/l	100
77) tert-Butylbenzene	11.42	119	37820	1.518	ug/l	92
78) 1,2,4-Trimethylbenzene	11.47	105	75013	2.817	ug/l	99
79) sec-Butylbenzene	11.64	105	48395	1.365	ug/l	99
81) p-Isopropyltoluene	11.79	119	74172	2.596	ug/l	99
82) 1,3-Dichlorobenzene	11.74	146	37796	2.574	ug/l	99
84) n-Butylbenzene	12.20	91	30955	1.020	ug/l	95
88) Hexachlorobutadiene	14.01	225	9361	2.329	ug/l	99
89) Naphthalene	14.08	128	129822	6.855	ug/l	99
90) 1,2,3-Trichlorobenzene	14.32	180	51618	6.178	ug/l	99

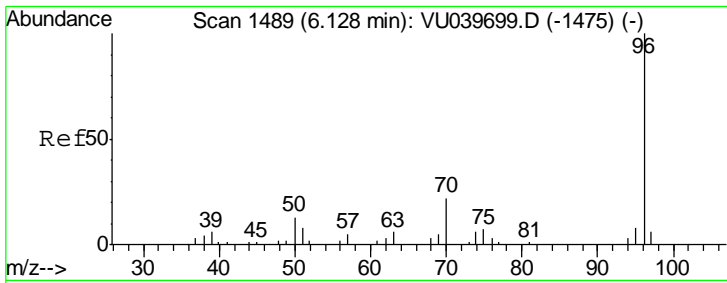
(#) = qualifier out of range (m) = manual integration (+) = signals summed

Data Path : Z:\VOASRV\HPCHEM1\MSVOA U\DATA\VU073020\
 Data File : VU039723.D
 Acq On : 30 Jul 2020 15:12
 Operator : SY/MD
 Sample : L3319-08DL 5X
 Misc : 25.0mL/MSVOA U/WATER
 ALS Vial : 8 Sample Multiplier: 1

Instrument :
 MSVOA_U
 Client Sampled :
 PT-UNRVOA-WSDL

Quant Time: Jul 31 07:19:44 2020
 Quant Method : Z:\VOASRV\HPCHEM1\MSVOA U\METHOD\524U072920DW.M
 Quant Title : METHOD 524.2 VOLATILES DRINKING WATER
 QLast Update : Thu Jul 30 13:49:19 2020
 Response via : Initial Calibration

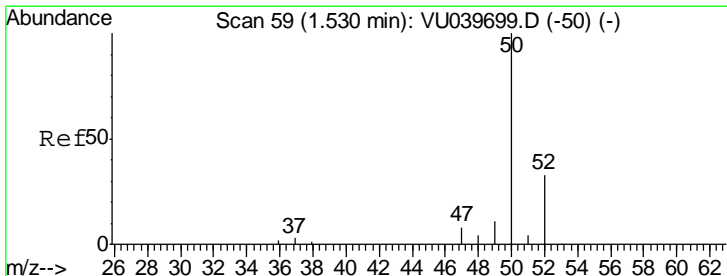
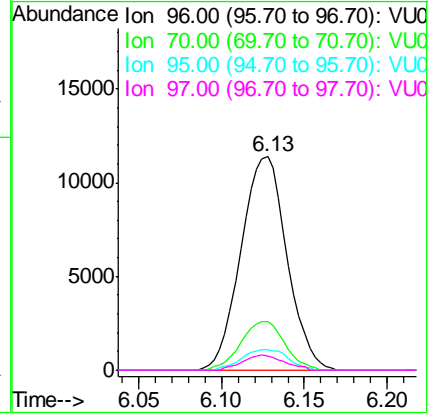
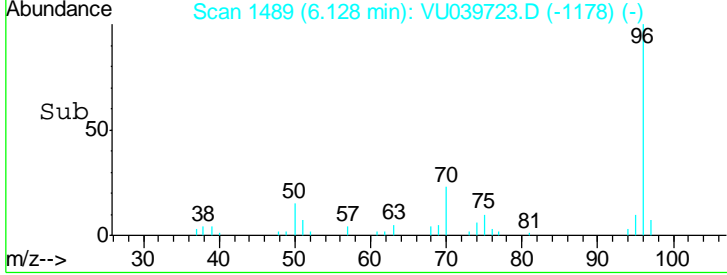
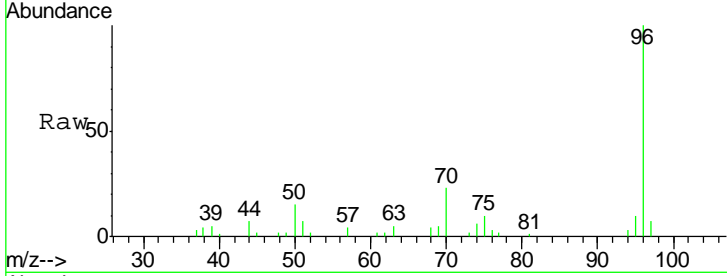




#1
 Fluorobenzene
 Concen: 1.000 ug/l
 RT: 6.13 min Scan# 1489
 Delta R.T. -0.00 min
 Lab File: VU039723.D
 Acq: 30 Jul 2020 15:12

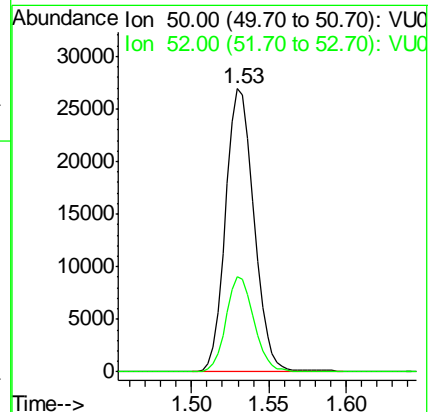
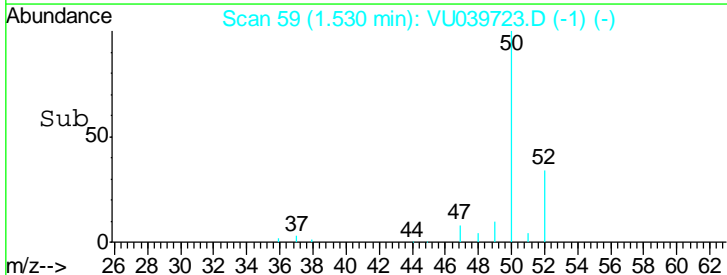
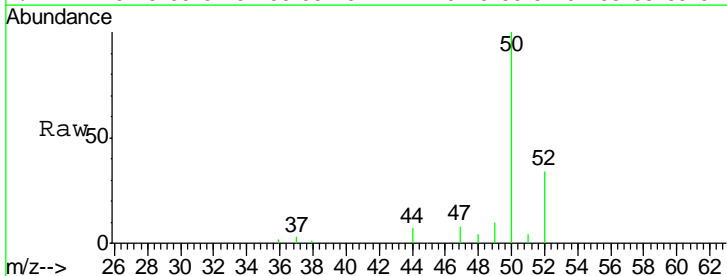
Instrument : MSVOA_U
 ClientSampled : PT-UNRVOA-WSDL

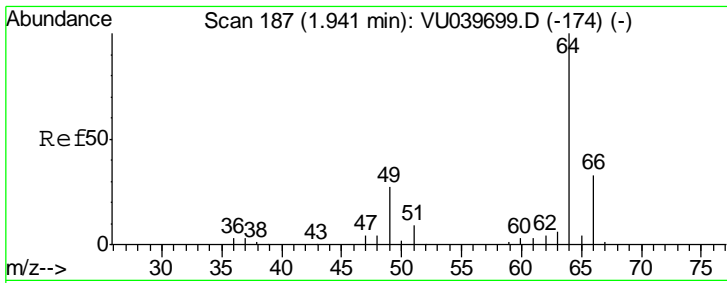
Tgt Ion	Resp	Lower	Upper
96	21966		
70	22.0	16.3	24.5
95	9.7	6.8	10.2
97	6.4	0.0	0.0#



#3
 Chloromethane
 Concen: 3.631 ug/l
 RT: 1.53 min Scan# 59
 Delta R.T. -0.00 min
 Lab File: VU039723.D
 Acq: 30 Jul 2020 15:12

Tgt Ion	Resp	Lower	Upper
50	34433		
52	33.6	26.0	39.0

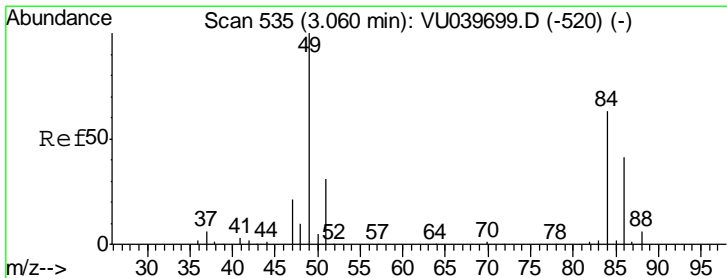
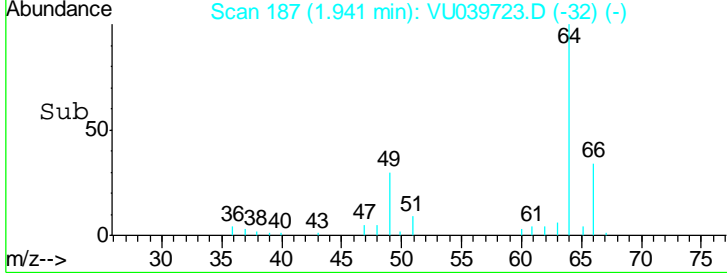
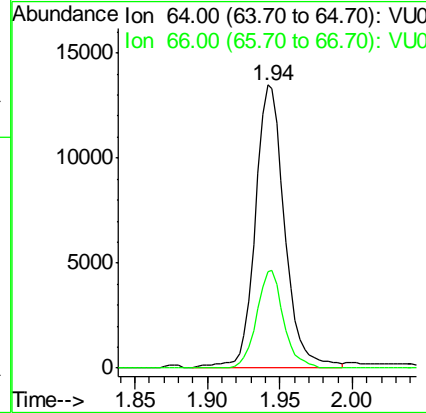
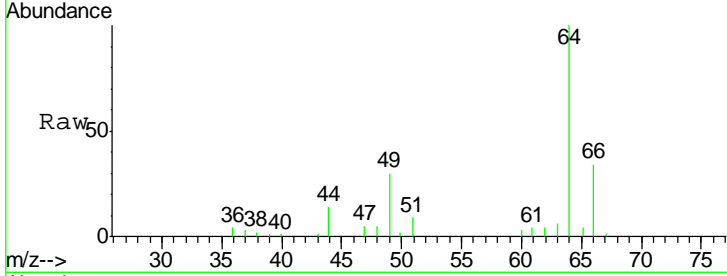




#6
 Chloroethane
 Concen: 3.156 ug/l
 RT: 1.94 min Scan# 187
 Delta R.T. -0.00 min
 Lab File: VU039723.D
 Acq: 30 Jul 2020 15:12

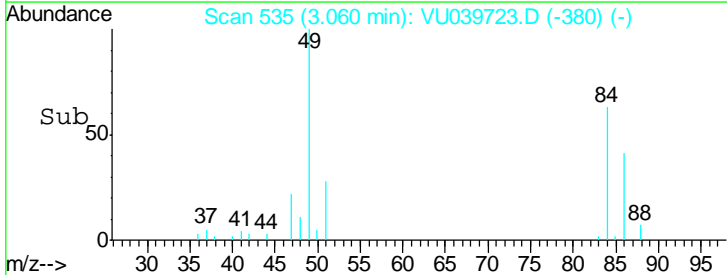
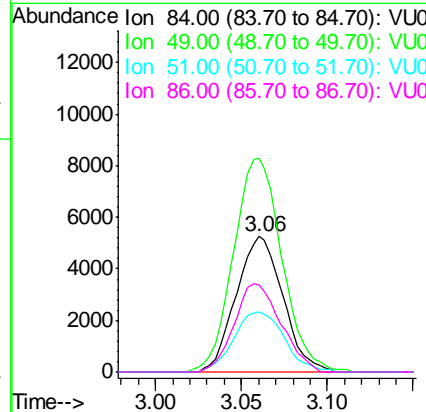
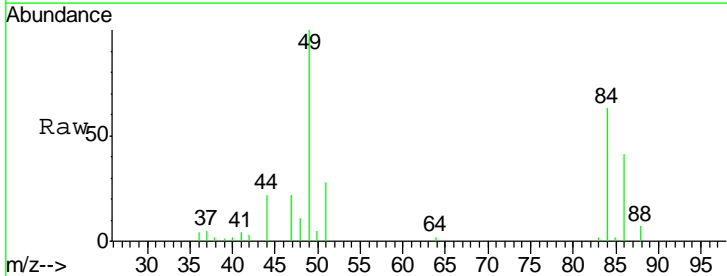
Instrument : MSVOA_U
 ClientSampleId : PT-UNRVOA-WSDL

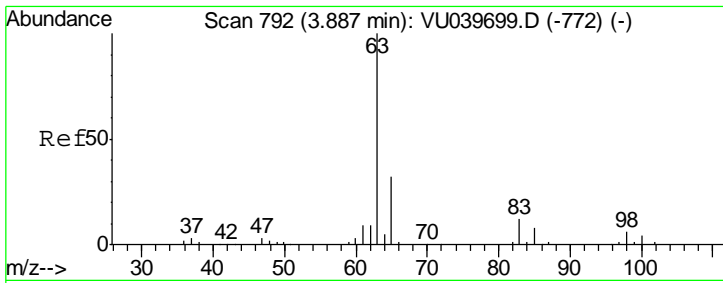
Tgt Ion	Resp	Lower	Upper
64	19137		
66	34.1	26.2	39.2



#15
 Methylene Chloride
 Concen: 1.165 ug/l
 RT: 3.06 min Scan# 535
 Delta R.T. -0.00 min
 Lab File: VU039723.D
 Acq: 30 Jul 2020 15:12

Tgt Ion	Resp	Lower	Upper
84	9910		
49	155.5	126.8	190.2
51	44.1	0.0	97.2
86	64.1	51.4	77.2

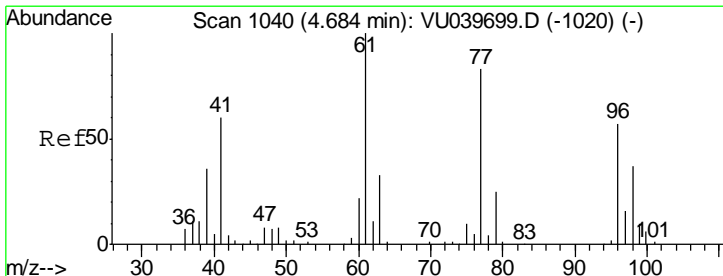
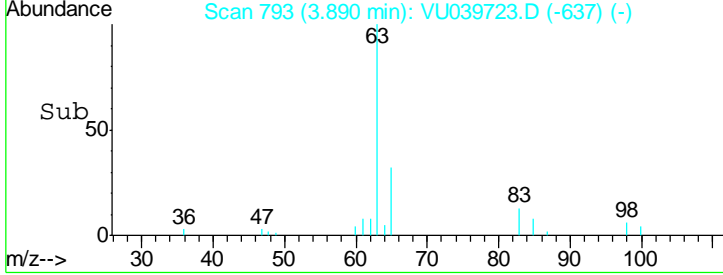
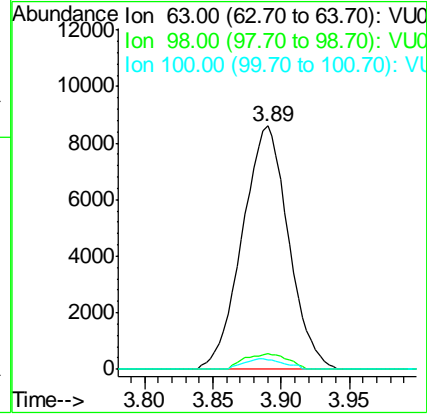
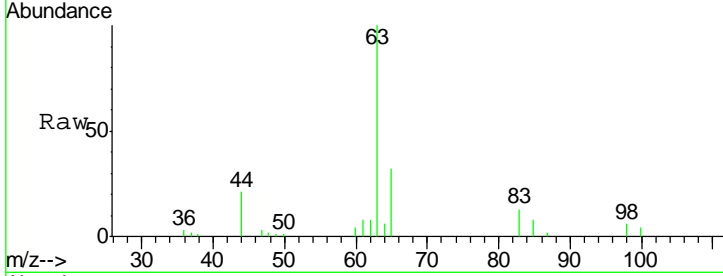




#17
 1,1-Dichloroethane
 Concen: 1.326 ug/l
 RT: 3.89 min Scan# 793
 Delta R.T. 0.00 min
 Lab File: VU039723.D
 Acq: 30 Jul 2020 15:12

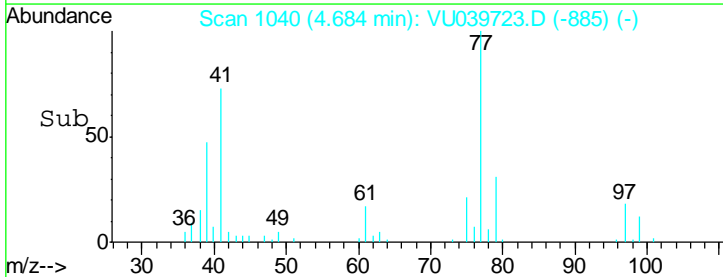
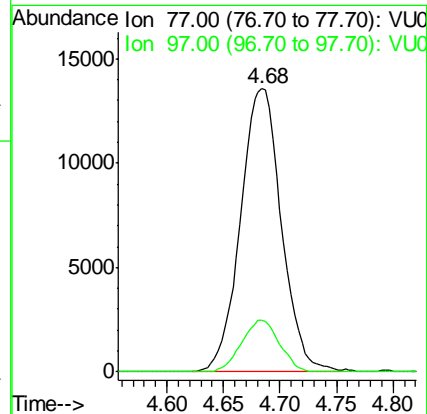
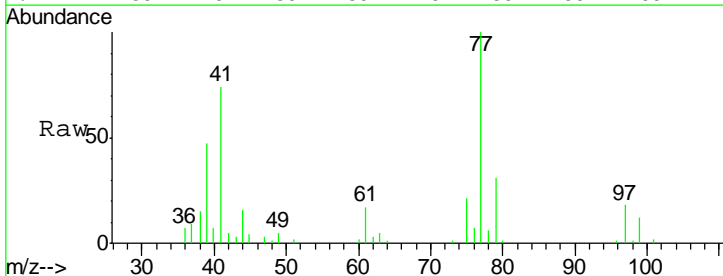
Instrument :
 MSVOA_U
ClientSampled :
 PT-UNRVOA-WSDL

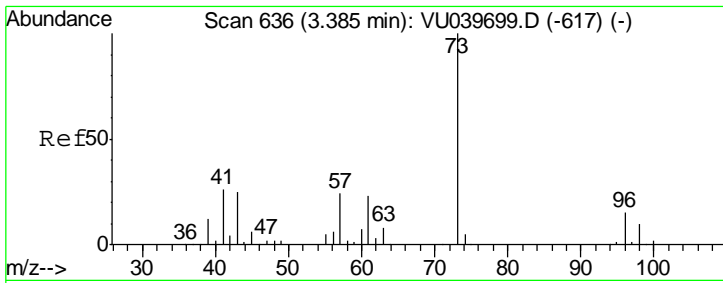
Tgt Ion	Resp	Lower	Upper
63	100		
98	6.3	2.9	8.7
100	4.1	2.0	6.0



#21
 2,2-Dichloropropane
 Concen: 2.745 ug/l
 RT: 4.68 min Scan# 1040
 Delta R.T. -0.00 min
 Lab File: VU039723.D
 Acq: 30 Jul 2020 15:12

Tgt Ion	Resp	Lower	Upper
77	100		
97	16.9	15.2	22.8

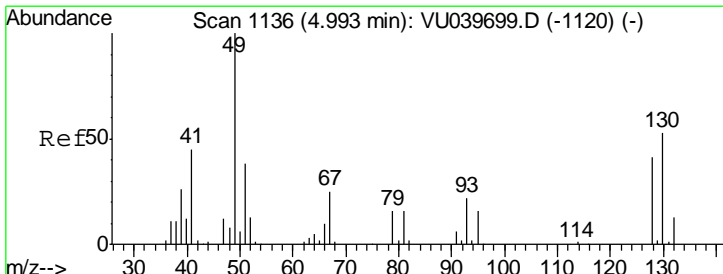
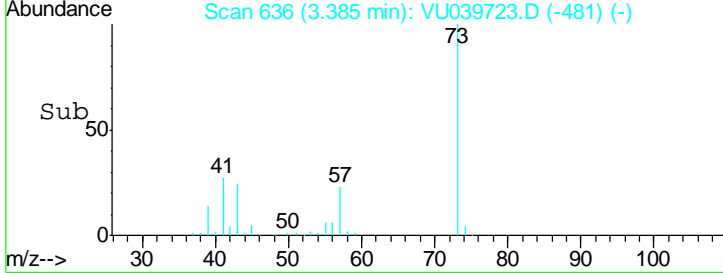
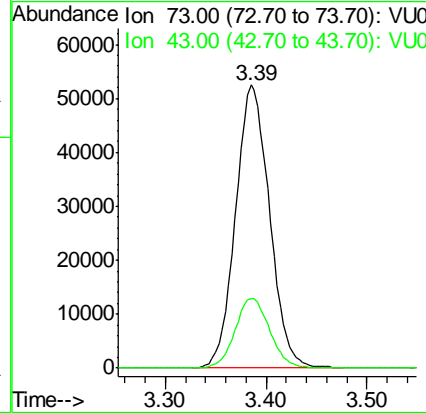
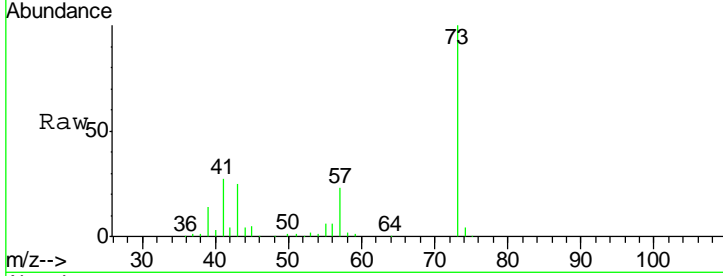




#25
 Methyl tert-Butyl Ether
 Concen: 6.162 ug/l
 RT: 3.39 min Scan# 636
 Delta R.T. -0.00 min
 Lab File: VU039723.D
 Acq: 30 Jul 2020 15:12

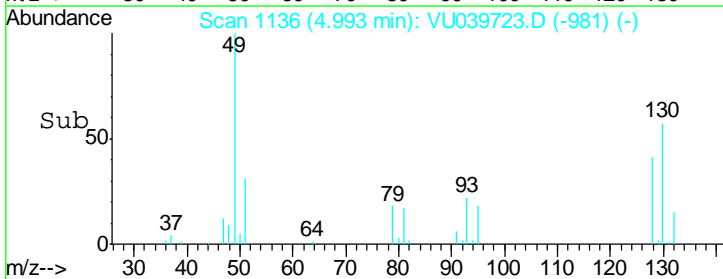
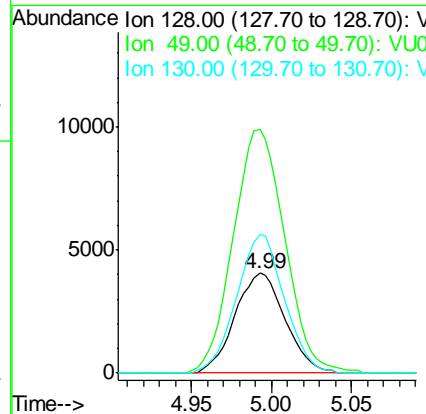
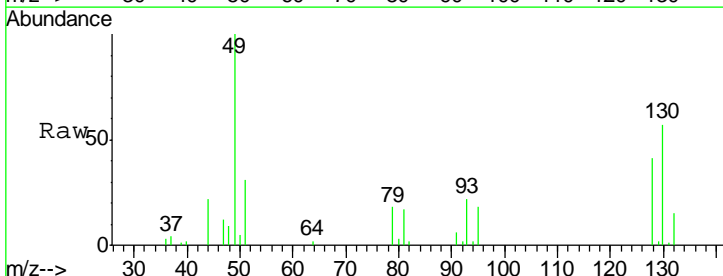
Instrument :
 MSVOA_U
ClientSampleId :
 PT-UNRVOA-WSDL

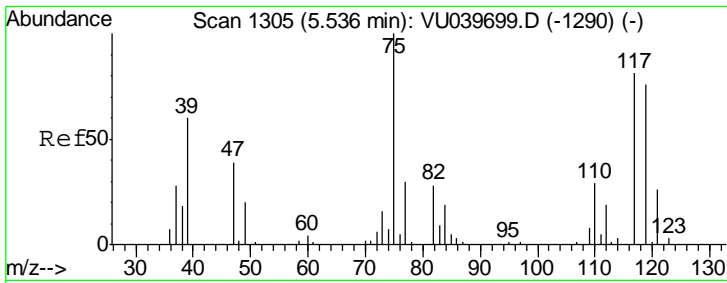
Tgt Ion	Resp	Lower	Upper
73	122719		
43	25.3	20.1	30.1



#26
 Bromochloromethane
 Concen: 2.847 ug/l
 RT: 4.99 min Scan# 1136
 Delta R.T. -0.00 min
 Lab File: VU039723.D
 Acq: 30 Jul 2020 15:12

Tgt Ion	Resp	Lower	Upper
128	8712		
49	249.9	0.0	503.8
130	132.1	102.7	154.1

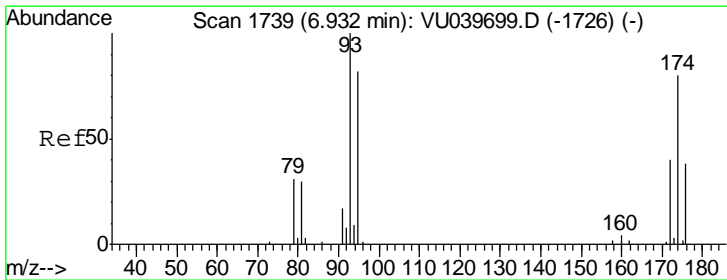
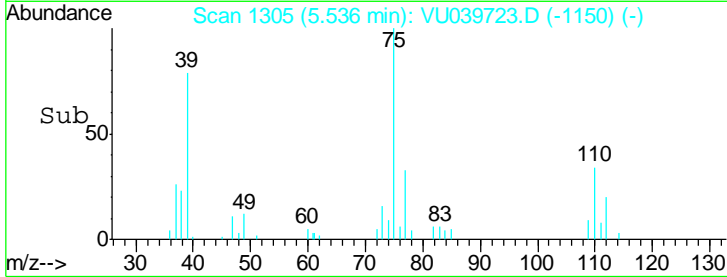
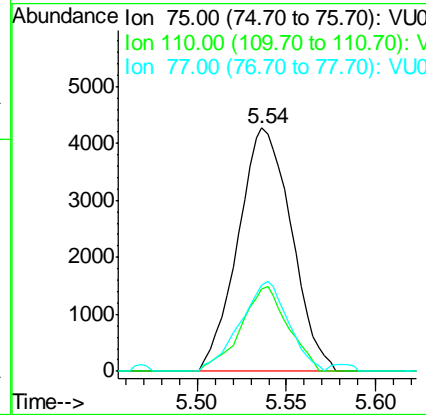
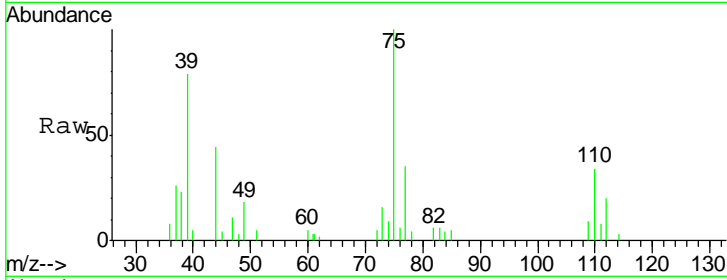




#29
 1,1-Dichloropropene
 Concen: 0.802 ug/l
 RT: 5.54 min Scan# 1305
 Delta R.T. -0.00 min
 Lab File: VU039723.D
 Acq: 30 Jul 2020 15:12

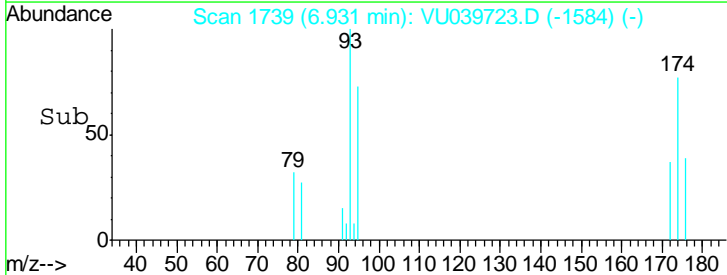
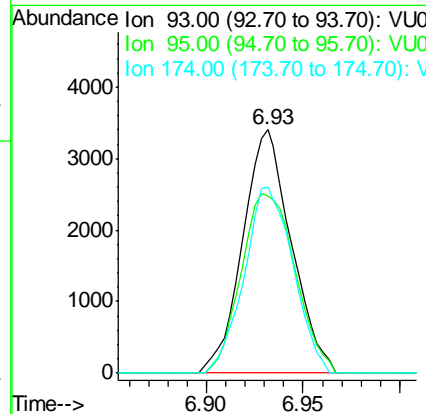
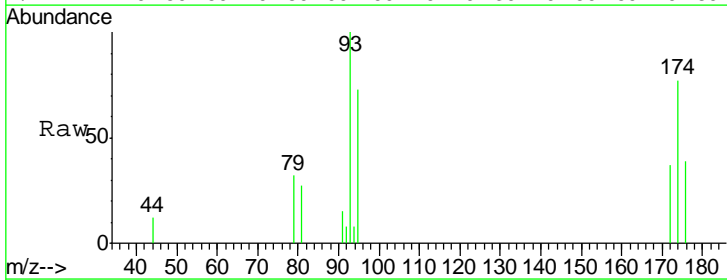
Instrument :
 MSVOA_U
ClientSampleId :
 PT-UNRVOA-WSDL

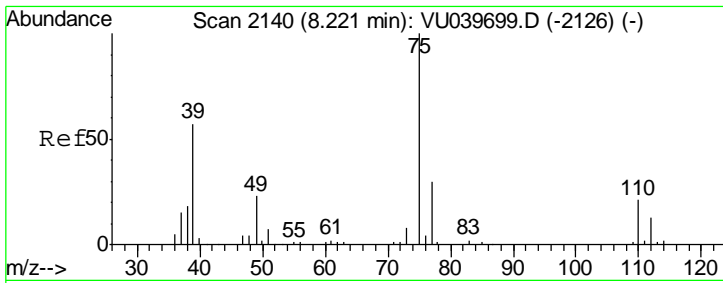
Tgt Ion	Resp	Lower	Upper
75	8916		
75	100		
110	30.7	14.6	44.0
77	33.4	25.0	37.4



#43
 Dibromomethane
 Concen: 1.457 ug/l
 RT: 6.93 min Scan# 1739
 Delta R.T. -0.00 min
 Lab File: VU039723.D
 Acq: 30 Jul 2020 15:12

Tgt Ion	Resp	Lower	Upper
93	5941		
93	100		
95	82.1	66.6	99.8
174	76.9	62.7	94.1

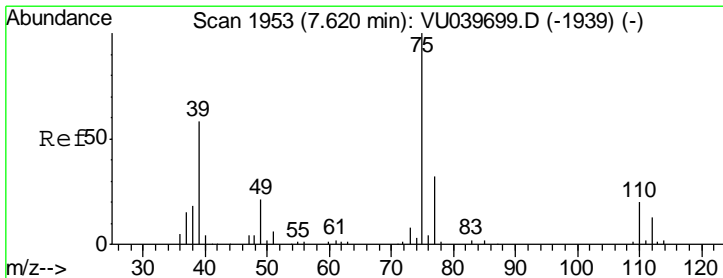
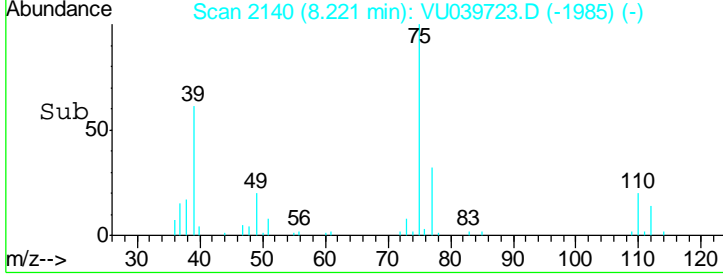
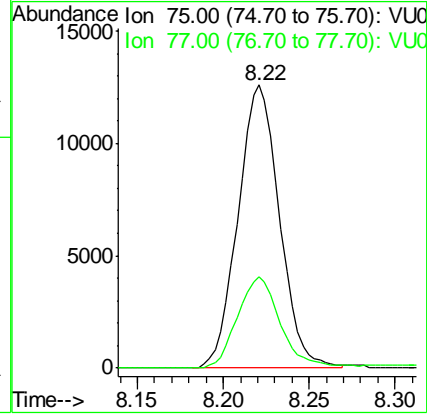
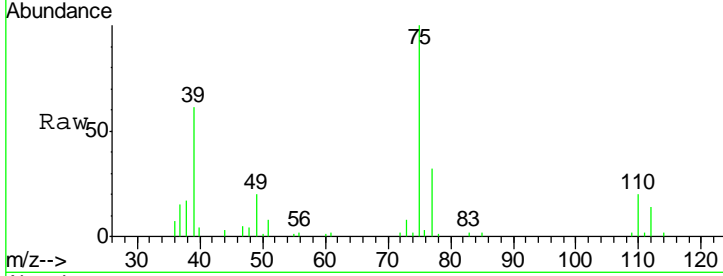




#50
 t-1,3-Dichloropropene
 Concen: 2.500 ug/l
 RT: 8.22 min Scan# 2140
 Delta R.T. -0.00 min
 Lab File: VU039723.D
 Acq: 30 Jul 2020 15:12

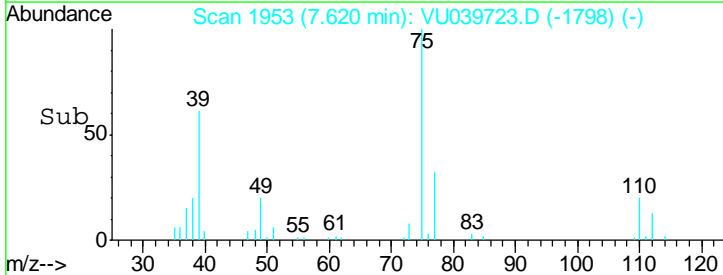
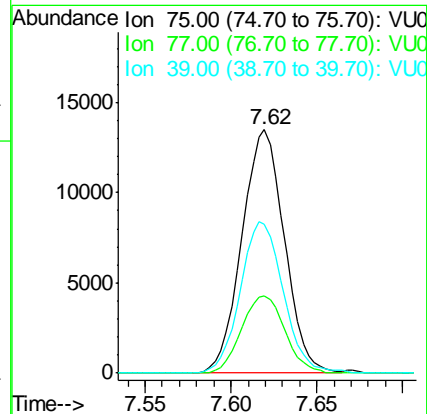
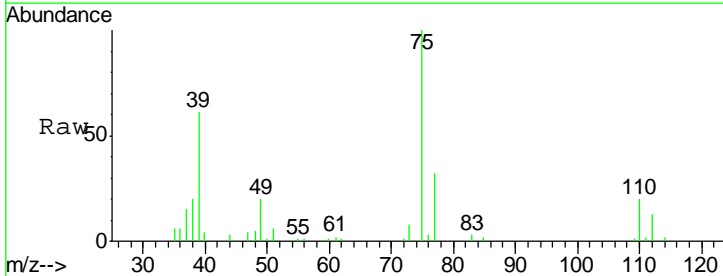
Instrument :
 MSVOA_U
ClientSampled :
 PT-UNRVOA-WSDL

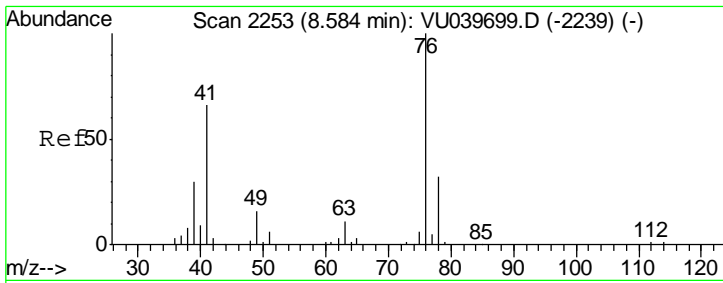
Tgt Ion	Resp	Lower	Upper
75	21043		
77	32.1	24.3	36.5



#51
 cis-1,3-Dichloropropene
 Concen: 2.347 ug/l
 RT: 7.62 min Scan# 1953
 Delta R.T. -0.00 min
 Lab File: VU039723.D
 Acq: 30 Jul 2020 15:12

Tgt Ion	Resp	Lower	Upper
75	23221		
77	31.5	25.7	38.5
39	61.1	46.1	69.1

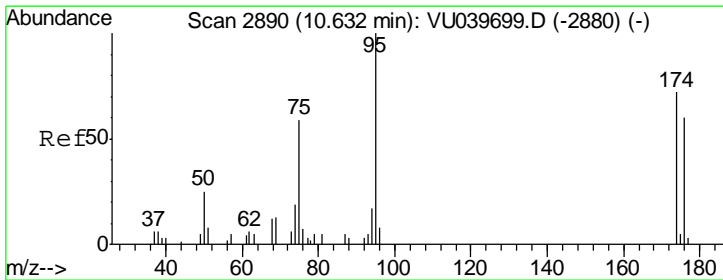
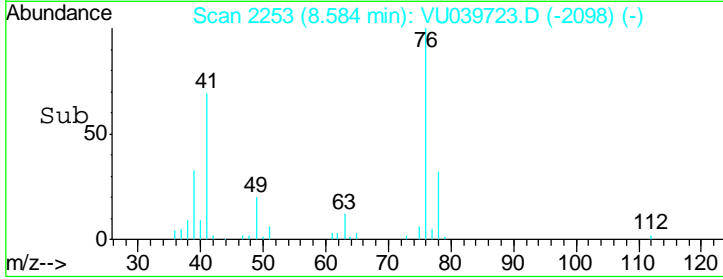
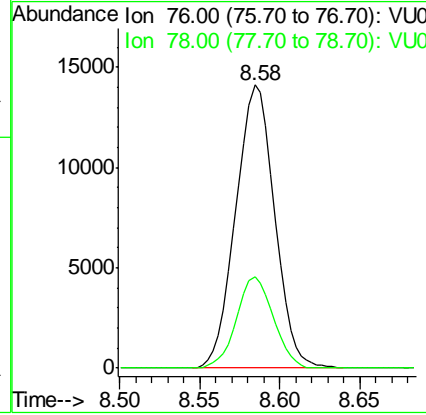
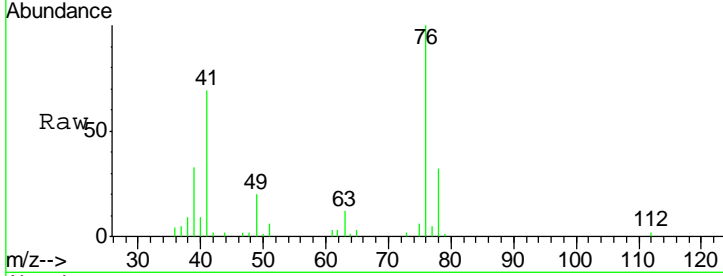




#53
 1,3-Dichloropropane
 Concen: 2.298 ug/l
 RT: 8.58 min Scan# 2253
 Delta R.T. -0.00 min
 Lab File: VU039723.D
 Acq: 30 Jul 2020 15:12

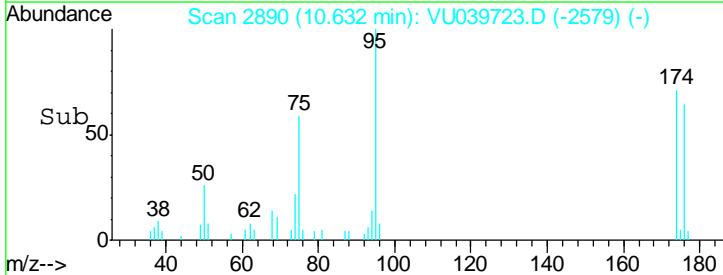
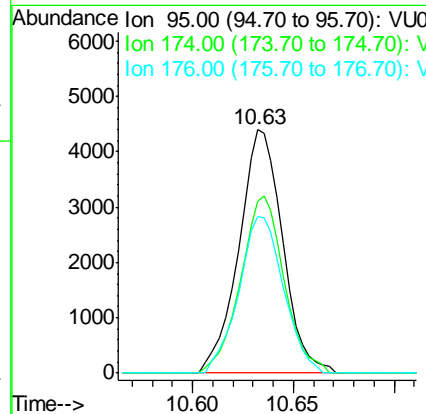
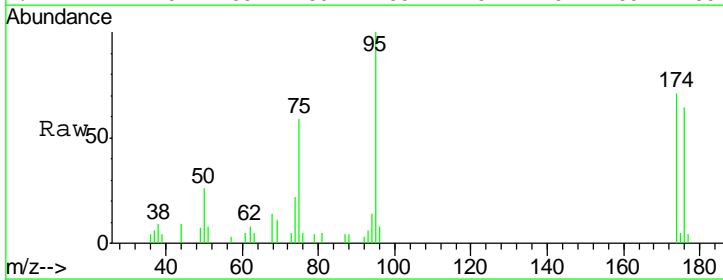
Instrument : MSVOA_U
 ClientSampleId : PT-UNRVOA-WSDL

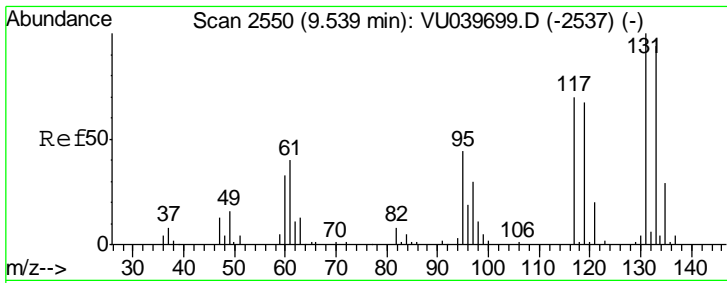
Tgt Ion	Resp	Lower	Upper
76	23371		
76	100		
78	30.4	25.4	38.2



#57
 4-Bromofluorobenzene
 Concen: 0.777 ug/l
 RT: 10.63 min Scan# 2890
 Delta R.T. -0.00 min
 Lab File: VU039723.D
 Acq: 30 Jul 2020 15:12

Tgt Ion	Resp	Lower	Upper
95	6671		
95	100		
174	72.7	57.0	85.4
176	65.7	50.2	75.2

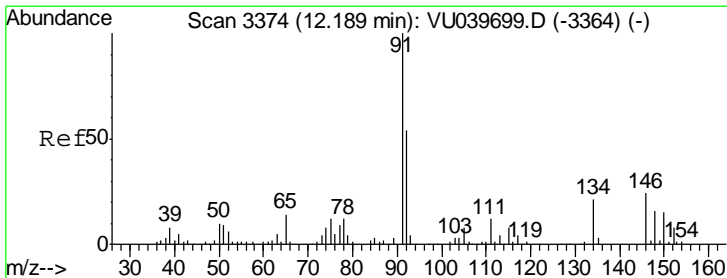
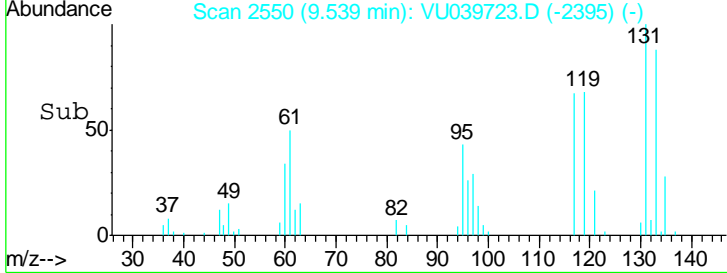
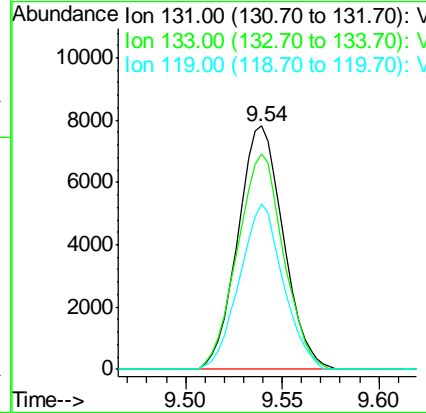
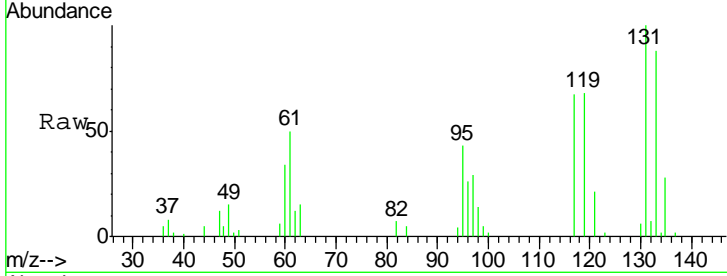




#60
 1,1,1,2-Tetrachloroethane
 Concen: 2.240 ug/l
 RT: 9.54 min Scan# 2550
 Delta R.T. -0.00 min
 Lab File: VU039723.D
 Acq: 30 Jul 2020 15:12

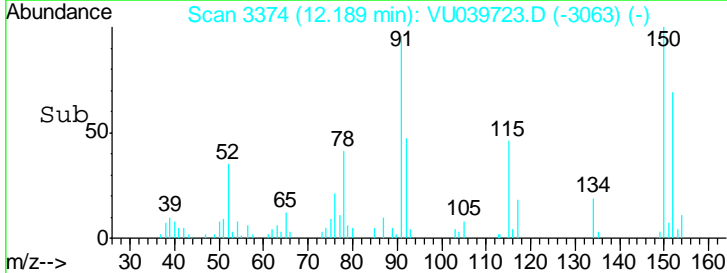
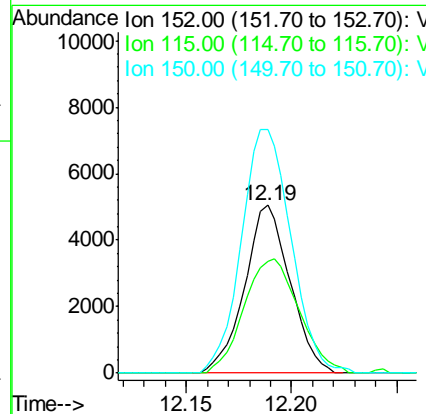
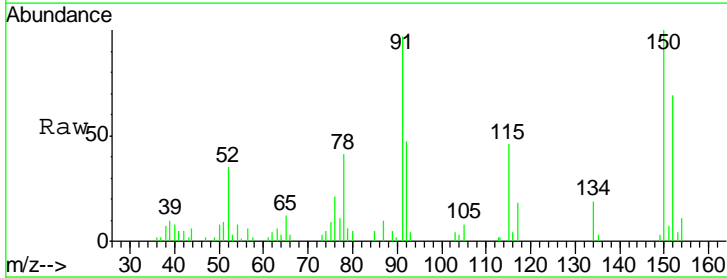
Instrument :
 MSVOA_U
ClientSampled :
 PT-UNRVOA-WSDL

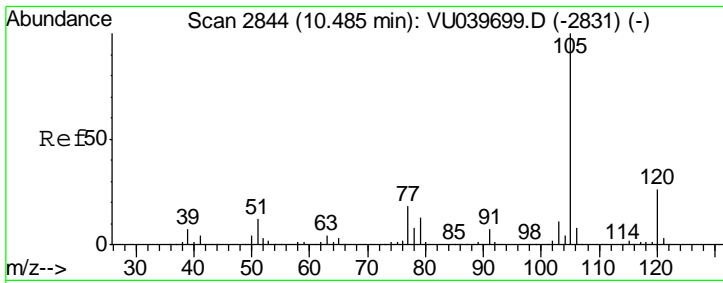
Tgt Ion	Resp	Lower	Upper
131	12775		
131	100		
133	89.7	75.8	113.8
119	65.1	54.6	81.8



#68
 1,2-Dichlorobenzene-d4
 Concen: 0.900 ug/l
 RT: 12.19 min Scan# 3374
 Delta R.T. -0.00 min
 Lab File: VU039723.D
 Acq: 30 Jul 2020 15:12

Tgt Ion	Resp	Lower	Upper
152	7560		
152	100		
115	82.5	0.0	302.4
150	158.8	0.0	645.8

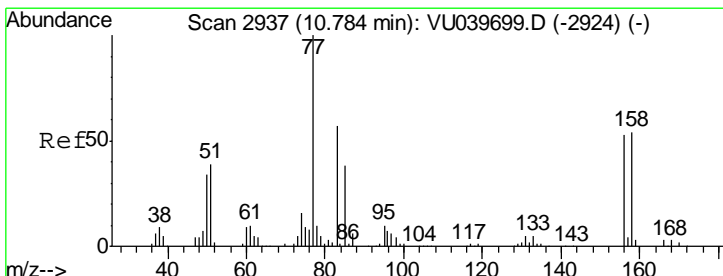
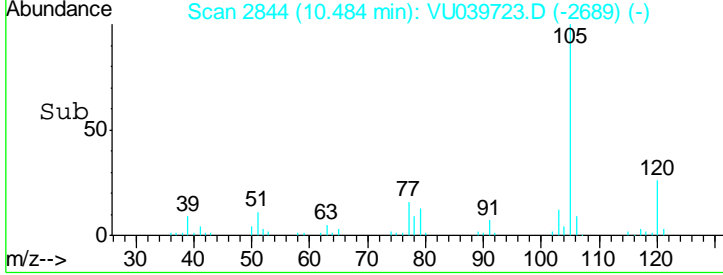
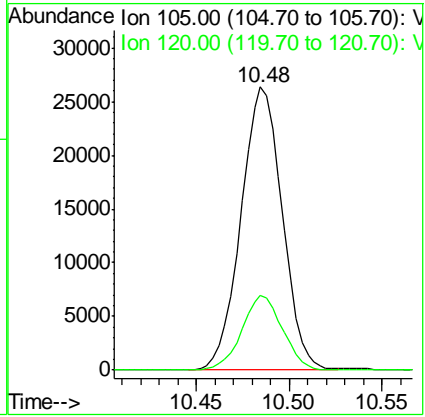
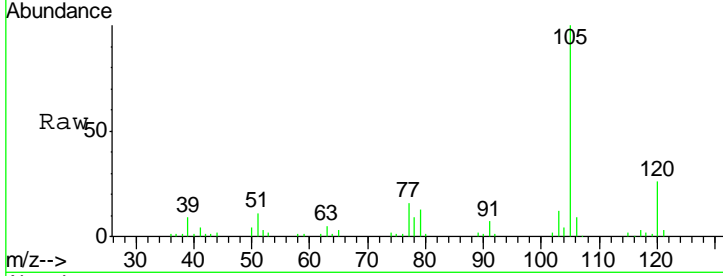




#69
 Isopropylbenzene
 Concen: 1.352 ug/l
 RT: 10.48 min Scan# 2844
 Delta R.T. -0.00 min
 Lab File: VU039723.D
 Acq: 30 Jul 2020 15:12

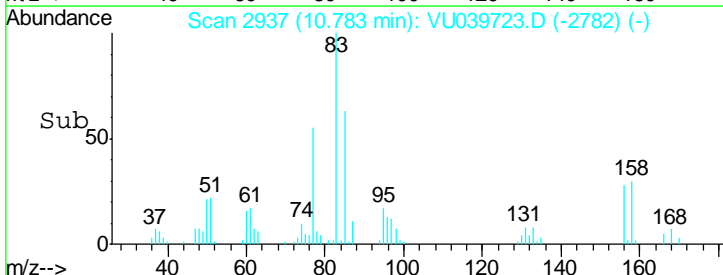
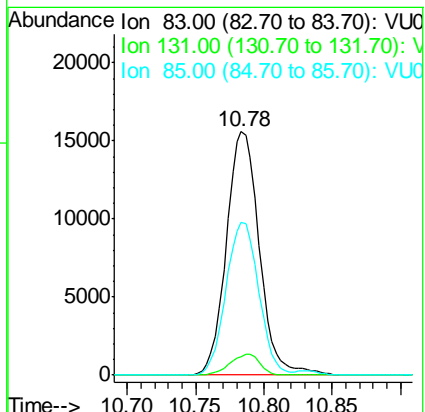
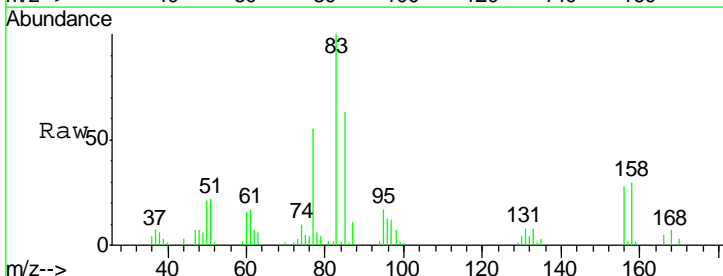
Instrument : MSVOA_U
 ClientSampleId : PT-UNRVOA-WSDL

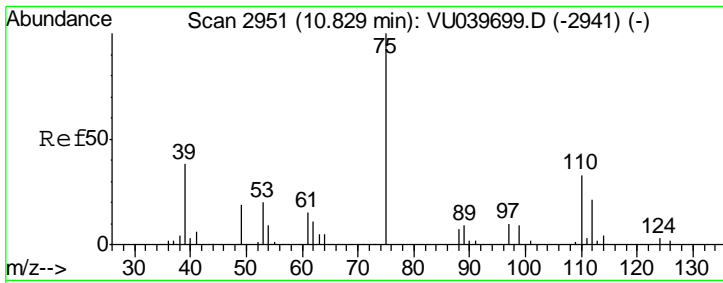
Tgt Ion	Resp	Lower	Upper
105	40615		
120	25.8	12.8	38.4



#70
 1,1,2,2-Tetrachloroethane
 Concen: 3.436 ug/l
 RT: 10.78 min Scan# 2937
 Delta R.T. -0.00 min
 Lab File: VU039723.D
 Acq: 30 Jul 2020 15:12

Tgt Ion	Resp	Lower	Upper
83	26195		
131	7.7	7.0	10.6
85	62.4	50.6	75.8

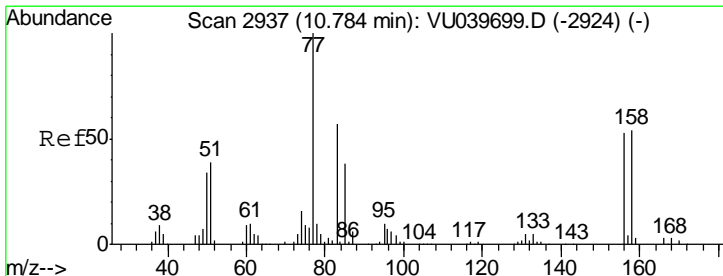
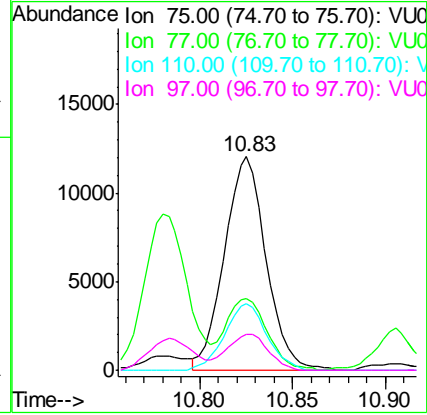
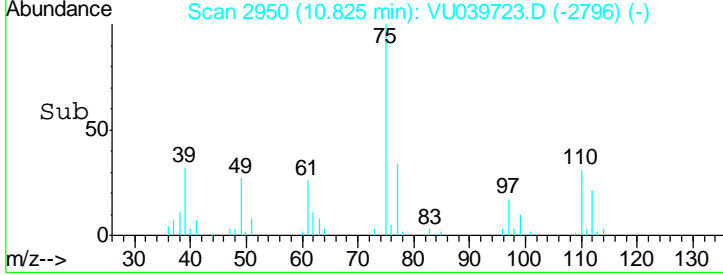
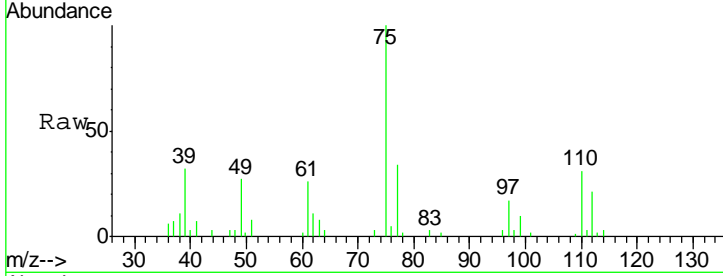




#71
 1,2,3-Trichloropropane
 Concen: 3.268 ug/l
 RT: 10.83 min Scan# 2950
 Delta R.T. -0.00 min
 Lab File: VU039723.D
 Acq: 30 Jul 2020 15:12

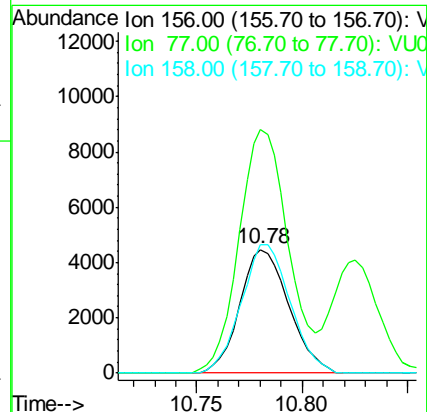
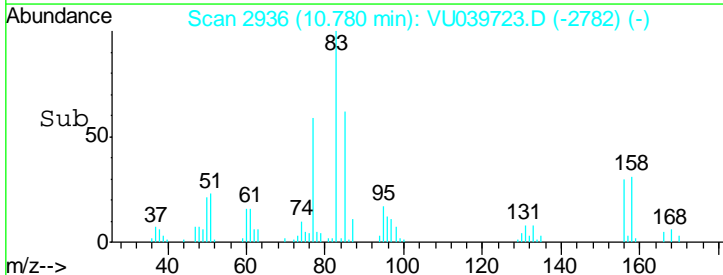
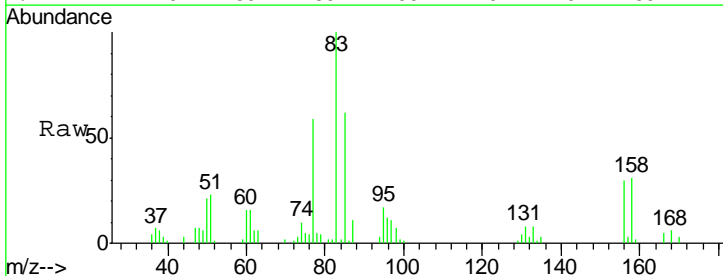
Instrument : MSVOA_U
 ClientSampleId : PT-UNRVOA-WSDL

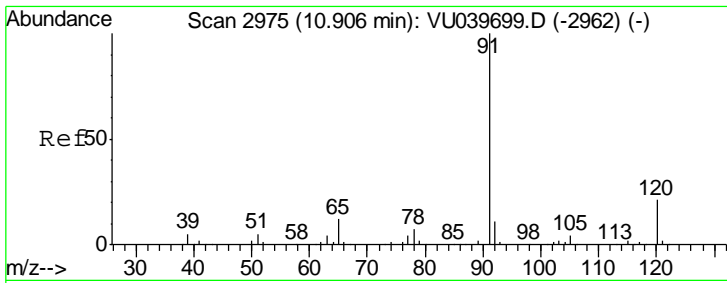
Tgt Ion	Resp	Lower	Upper
75	18768		
77	33.8	0.0	91.0
110	31.9	0.0	64.2
97	16.4	0.0	32.6



#72
 Bromobenzene
 Concen: 1.059 ug/l
 RT: 10.78 min Scan# 2936
 Delta R.T. -0.00 min
 Lab File: VU039723.D
 Acq: 30 Jul 2020 15:12

Tgt Ion	Resp	Lower	Upper
156	7225		
77	196.7	0.0	385.2
158	103.8	0.0	200.8

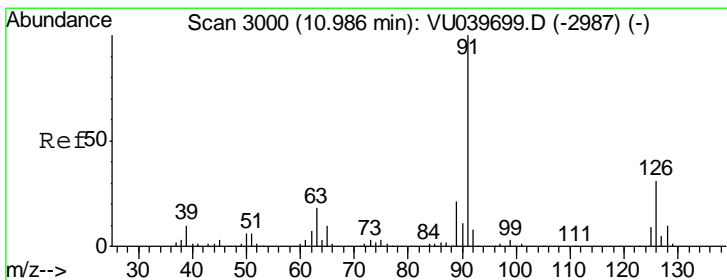
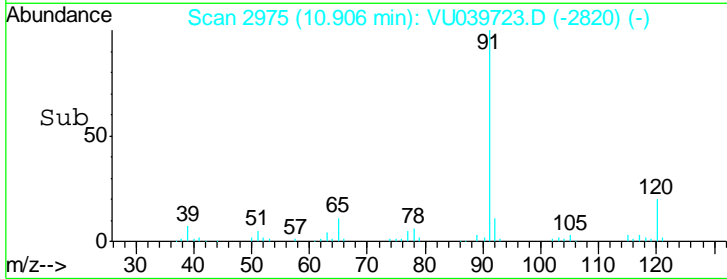
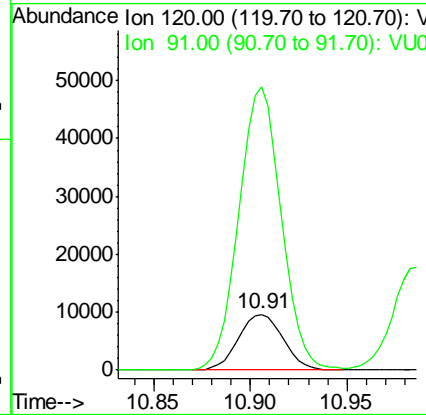
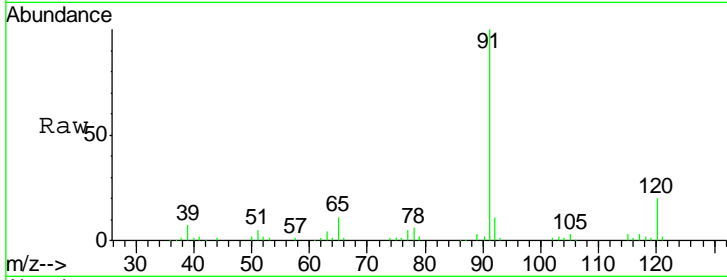




#73
 n-propylbenzene
 Concen: 1.835 ug/l
 RT: 10.91 min Scan# 2975
 Delta R.T. -0.00 min
 Lab File: VU039723.D
 Acq: 30 Jul 2020 15:12

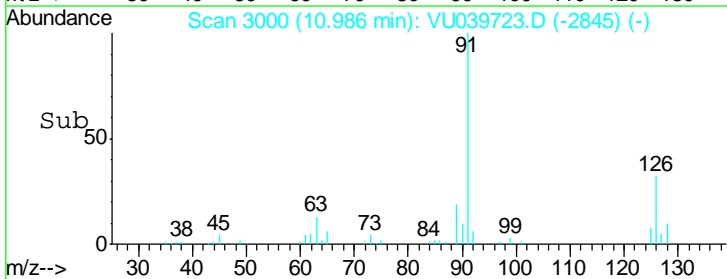
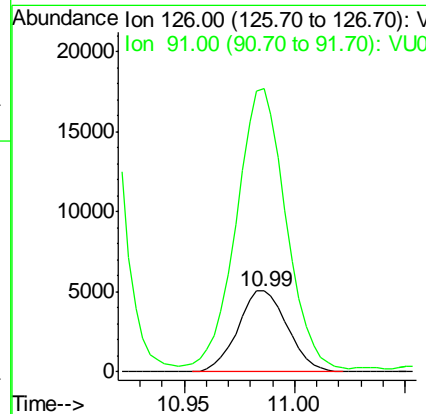
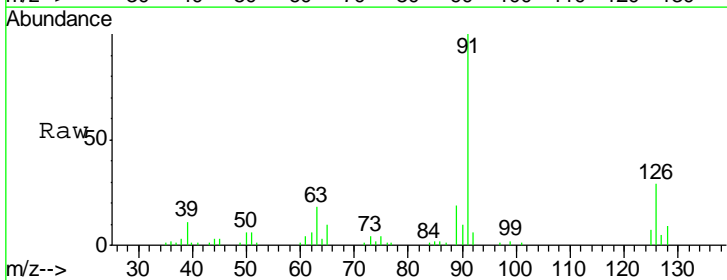
Instrument : MSVOA_U
 ClientSampled : PT-UNRVOA-WSDL

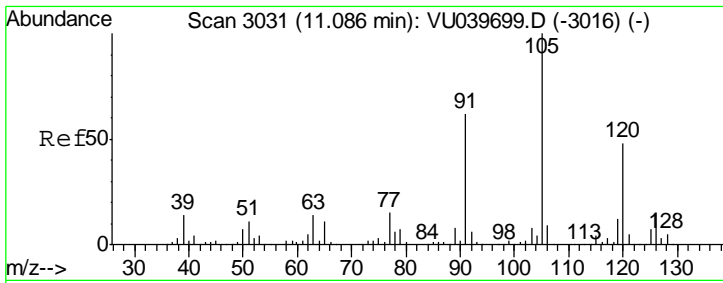
Tgt Ion	Resp	Lower	Upper
120	15500		
91	481.6	371.7	557.5



#74
 2-Chlorotoluene
 Concen: 1.102 ug/l
 RT: 10.99 min Scan# 3000
 Delta R.T. -0.00 min
 Lab File: VU039723.D
 Acq: 30 Jul 2020 15:12

Tgt Ion	Resp	Lower	Upper
126	7864		
91	347.4	0.0	637.0

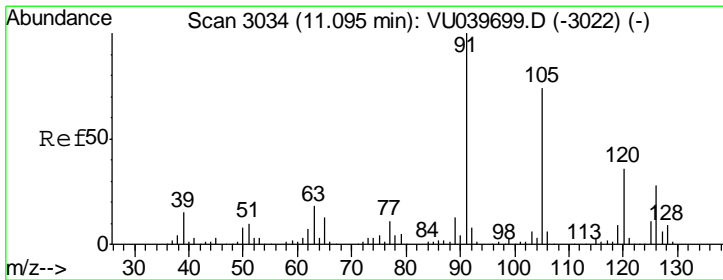
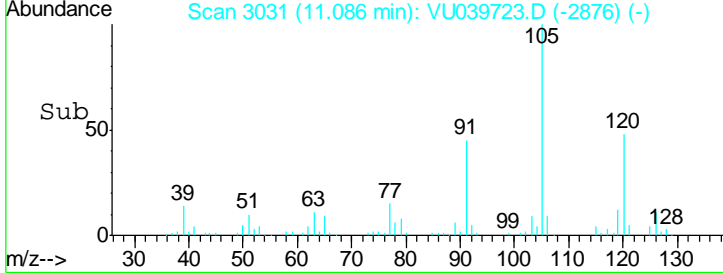
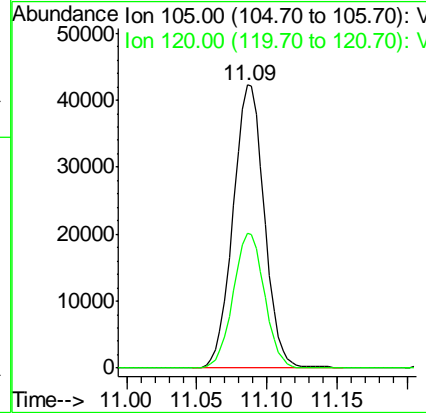
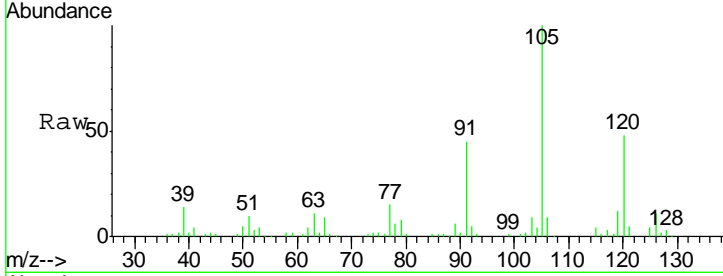




#75
 1,3,5-Trimethylbenzene
 Concen: 2.525 ug/l
 RT: 11.09 min Scan# 3031
 Delta R.T. -0.00 min
 Lab File: VU039723.D
 Acq: 30 Jul 2020 15:12

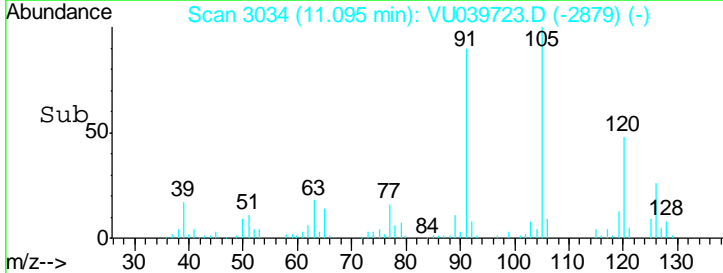
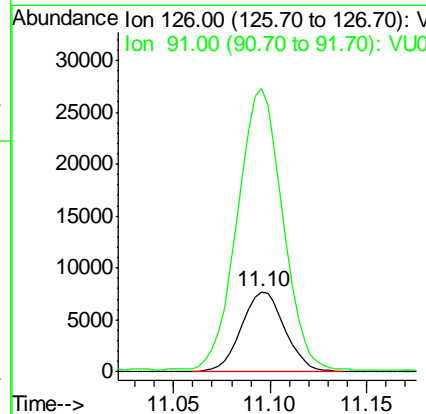
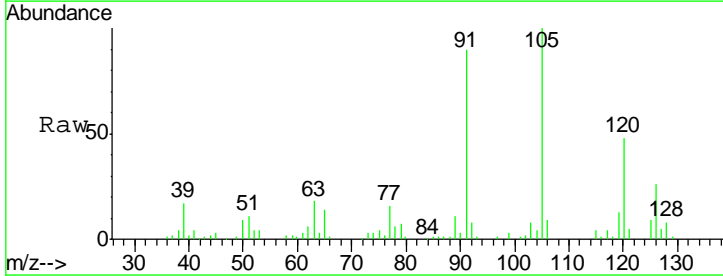
Instrument : MSVOA_U
 ClientSampleId : PT-UNRVOA-WSDL

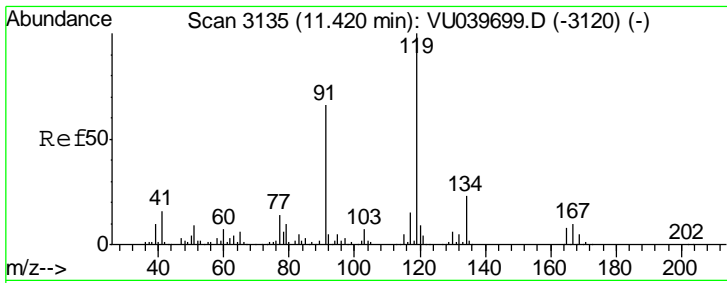
Tgt Ion: 105 Resp: 65558
 Ion Ratio Lower Upper
 105 100
 120 47.7 38.0 57.0



#76
 4-Chlorotoluene
 Concen: 1.637 ug/l
 RT: 11.10 min Scan# 3034
 Delta R.T. -0.00 min
 Lab File: VU039723.D
 Acq: 30 Jul 2020 15:12

Tgt Ion: 126 Resp: 12096
 Ion Ratio Lower Upper
 126 100
 91 366.9 0.0 732.2

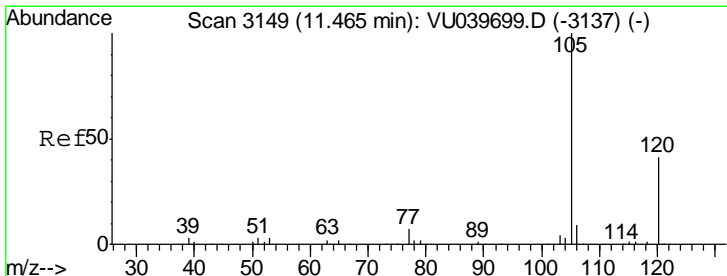
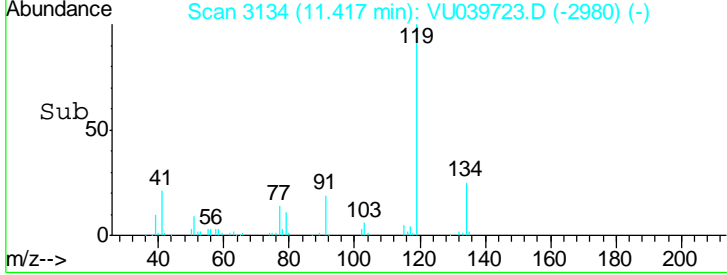
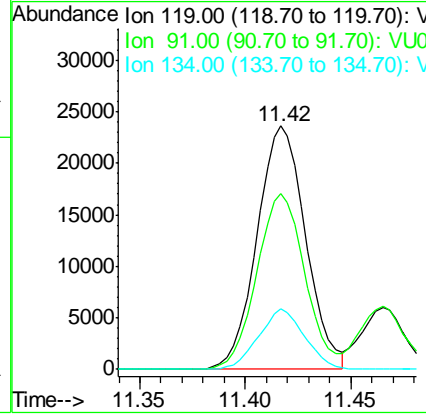
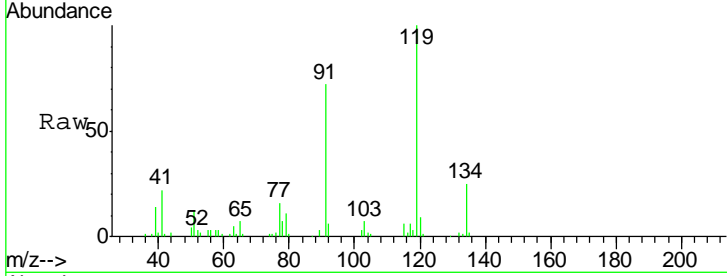




#77
 tert-Butylbenzene
 Concen: 1.518 ug/l
 RT: 11.42 min Scan# 3134
 Delta R.T. -0.00 min
 Lab File: VU039723.D
 Acq: 30 Jul 2020 15:12

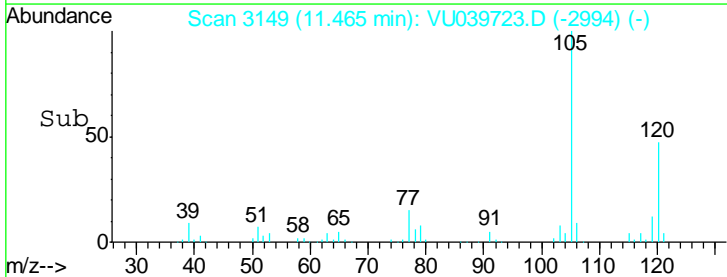
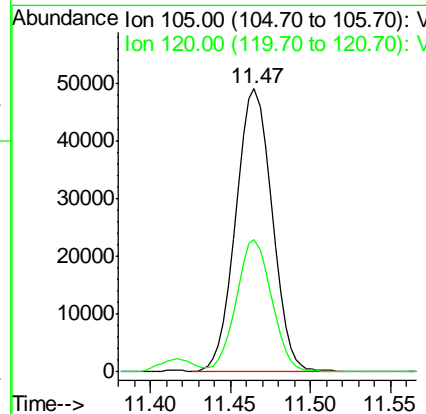
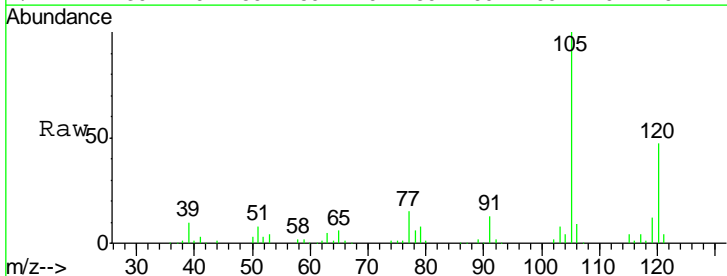
Instrument : MSVOA_U
 ClientSampled : PT-UNRVOA-WSDL

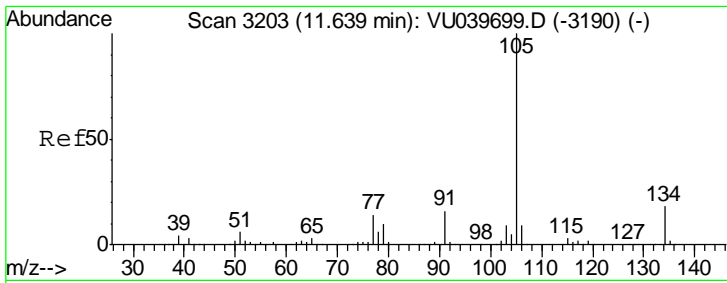
Tgt Ion	Resp	Lower	Upper
119	37820		
91	71.7	31.9	95.5
134	23.3	18.2	27.4



#78
 1,2,4-Trimethylbenzene
 Concen: 2.817 ug/l
 RT: 11.47 min Scan# 3149
 Delta R.T. -0.00 min
 Lab File: VU039723.D
 Acq: 30 Jul 2020 15:12

Tgt Ion	Resp	Lower	Upper
105	75013		
120	46.0	22.7	68.0

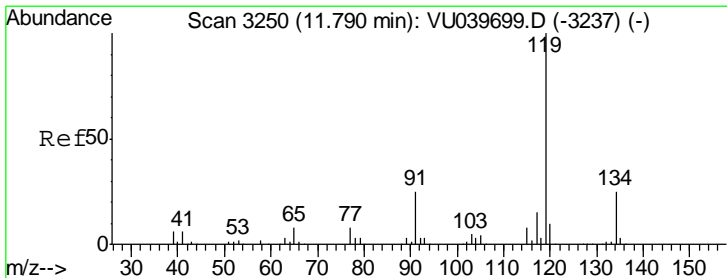
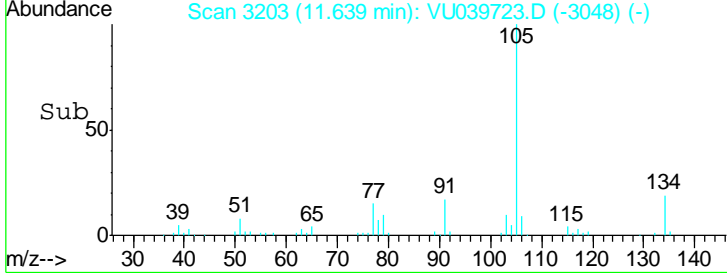
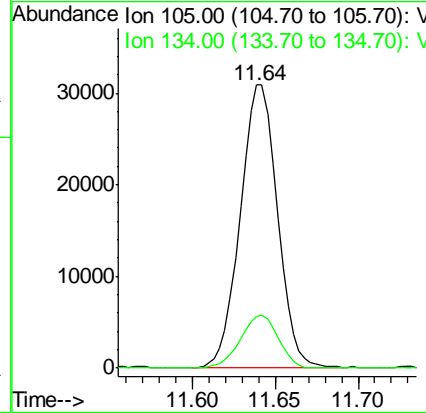
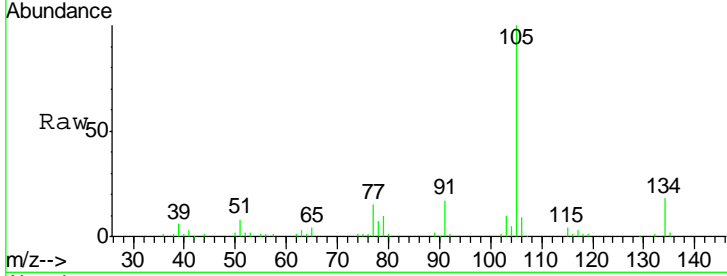




#79
 sec-Butylbenzene
 Concen: 1.365 ug/l
 RT: 11.64 min Scan# 3203
 Delta R.T. -0.00 min
 Lab File: VU039723.D
 Acq: 30 Jul 2020 15:12

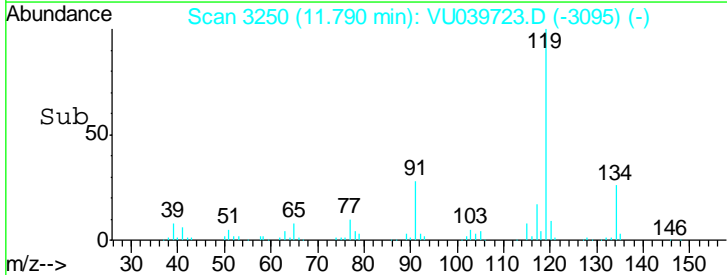
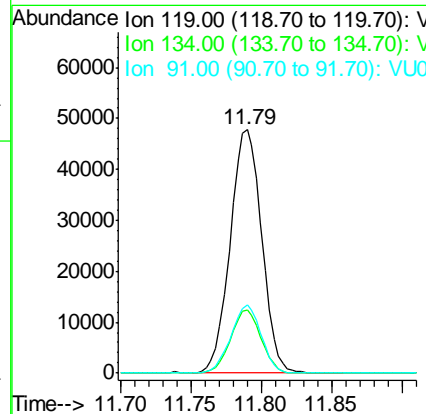
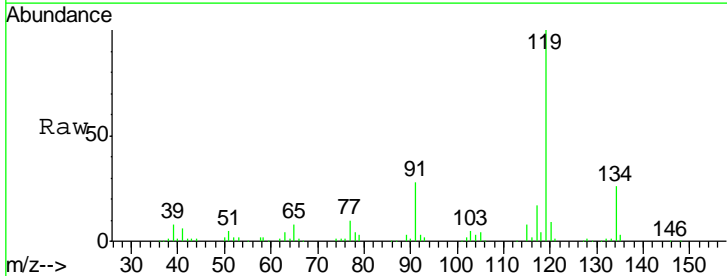
Instrument : MSVOA_U
 ClientSampled : PT-UNRVOA-WSDL

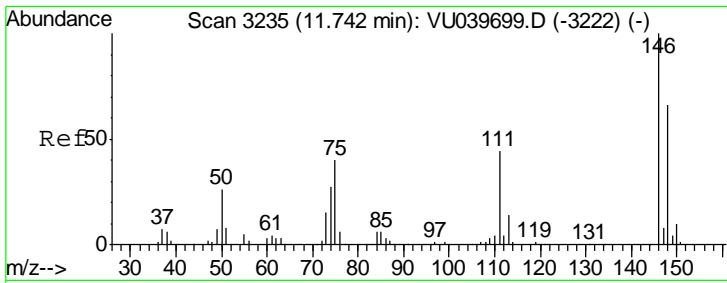
Tgt Ion	Resp	Lower	Upper
105	48395		
134	18.9	14.8	22.2



#81
 p-Isopropyltoluene
 Concen: 2.596 ug/l
 RT: 11.79 min Scan# 3250
 Delta R.T. -0.00 min
 Lab File: VU039723.D
 Acq: 30 Jul 2020 15:12

Tgt Ion	Resp	Lower	Upper
119	74172		
134	25.3	20.2	30.4
91	27.1	20.7	31.1

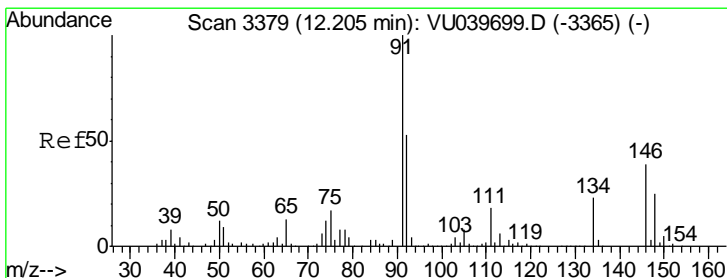
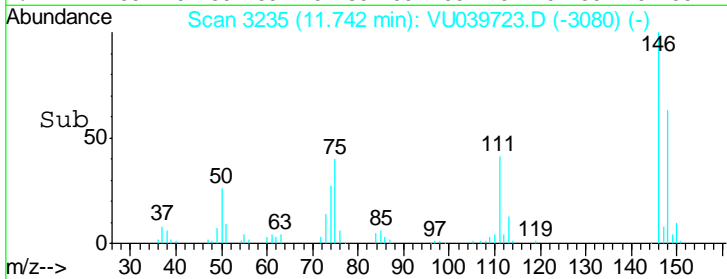
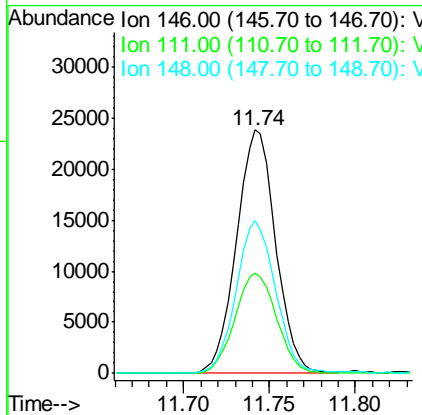
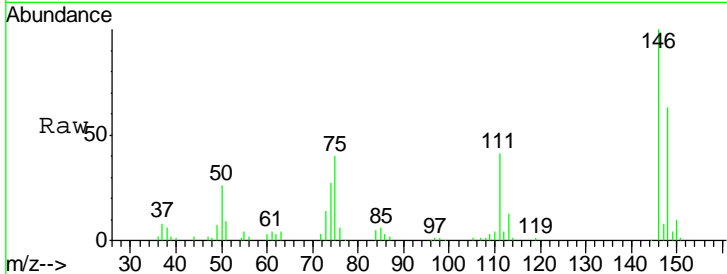




#82
 1,3-Dichlorobenzene
 Concen: 2.574 ug/l
 RT: 11.74 min Scan# 3235
 Delta R.T. -0.00 min
 Lab File: VU039723.D
 Acq: 30 Jul 2020 15:12

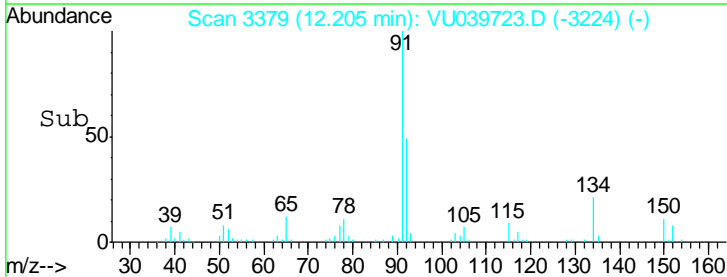
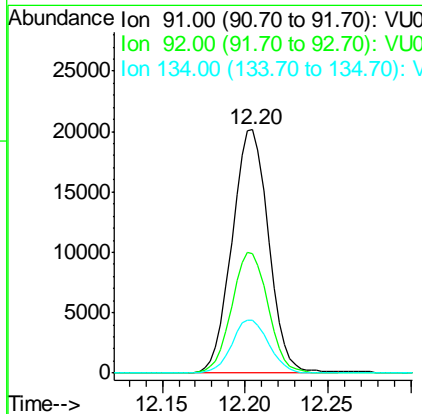
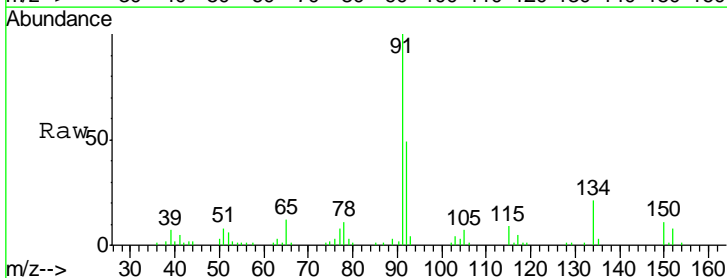
Instrument :
 MSVOA_U
 ClientSampleId :
 PT-UNRVOA-WSDL

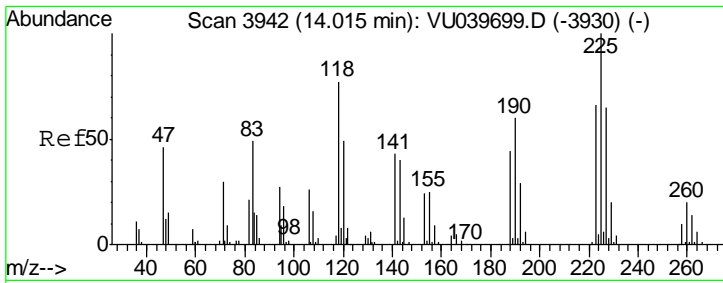
Tgt Ion	Resp	Lower	Upper
146	37796		
111	43.4	34.5	51.7
148	63.3	51.4	77.0



#84
 n-Butylbenzene
 Concen: 1.020 ug/l
 RT: 12.20 min Scan# 3379
 Delta R.T. -0.00 min
 Lab File: VU039723.D
 Acq: 30 Jul 2020 15:12

Tgt Ion	Resp	Lower	Upper
91	30955		
92	49.1	42.6	64.0
134	21.9	18.2	27.4

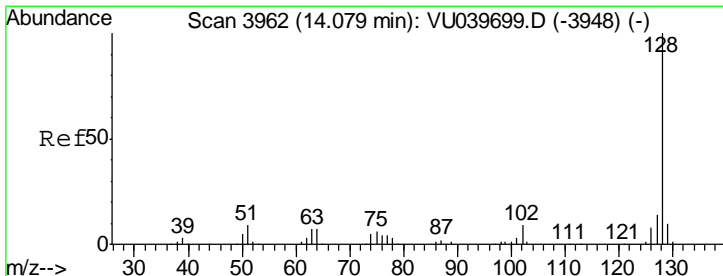
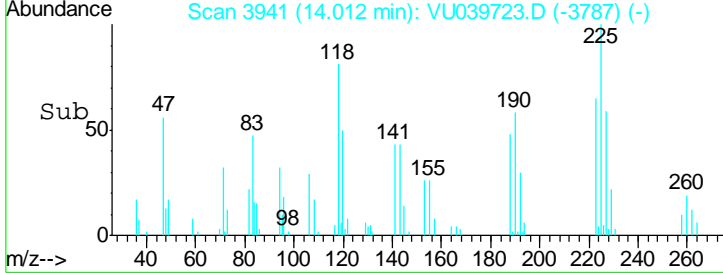
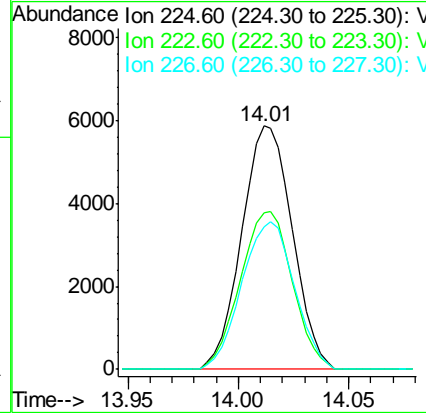
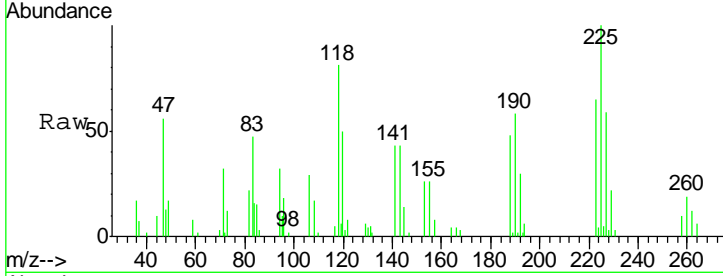




#88
 Hexachlorobutadiene
 Concen: 2.329 ug/l
 RT: 14.01 min Scan# 3941
 Delta R.T. -0.00 min
 Lab File: VU039723.D
 Acq: 30 Jul 2020 15:12

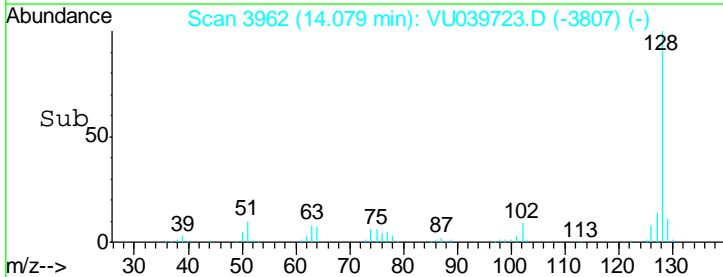
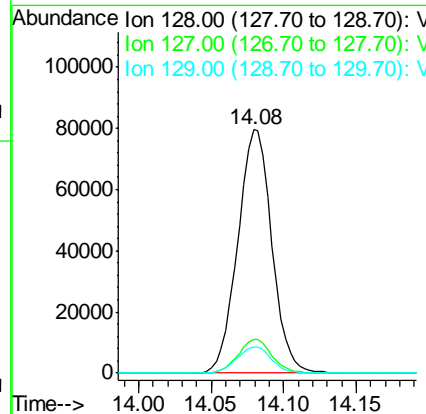
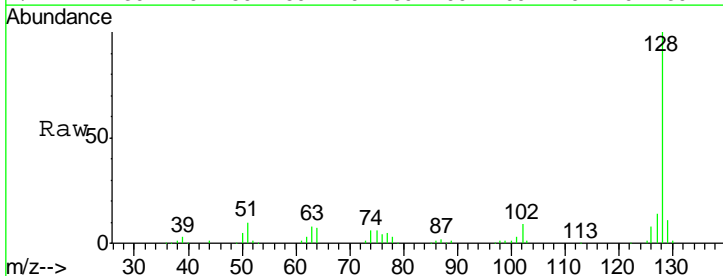
Instrument : MSVOA_U
 ClientSampleId : PT-UNRVOA-WSDL

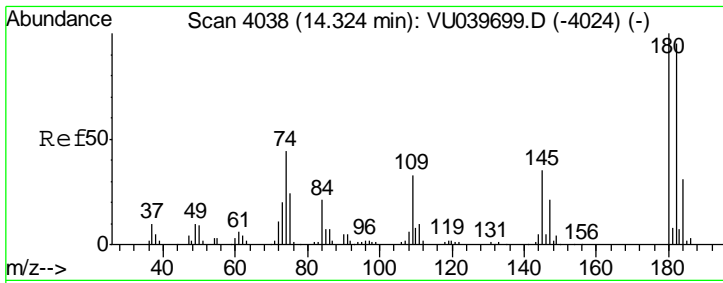
Tgt Ion	Resp	Lower	Upper
225	9361		
223	66.6	52.4	78.6
227	63.0	50.7	76.1



#89
 Naphthalene
 Concen: 6.855 ug/l
 RT: 14.08 min Scan# 3962
 Delta R.T. -0.00 min
 Lab File: VU039723.D
 Acq: 30 Jul 2020 15:12

Tgt Ion	Resp	Lower	Upper
128	129822		
127	13.9	11.0	16.4
129	10.9	8.4	12.6





#90
 1,2,3-Trichlorobenzene
 Concen: 6.178 ug/l
 RT: 14.32 min Scan# 4037
 Delta R.T. -0.00 min
 Lab File: VU039723.D
 Acq: 30 Jul 2020 15:12

Instrument :
 MSVOA_U
ClientSampled :
 PT-UNRVOA-WSDL

Tot Ion: 180 Resp: 51618

Ion	Ratio	Lower	Upper
180	100		
182	95.9	76.0	114.0
145	35.5	27.8	41.6

