

Data Path : Z:\VOASRV\HPCHEM1\MSVOA U\DATA\VU080118\
 Data File : VU025780.D
 Acq On : 01 Aug 2018 16:42
 Operator : MD/SY
 Sample : J4262-05
 Misc : 5.0mL/MSVOA U/WATER
 ALS Vial : 45 Sample Multiplier: 1

Instrument :
 MSVOA_U
 ClientSampleId :
 GW-02

Quant Time: Aug 02 04:55:48 2018
 Quant Method : Z:\VOASRV\HPCHEM1\MSVOA_U\METHOD\82U072718W.M
 Quant Title : SW846 8260
 QLast Update : Tue Jul 31 16:07:47 2018
 Response via : Initial Calibration

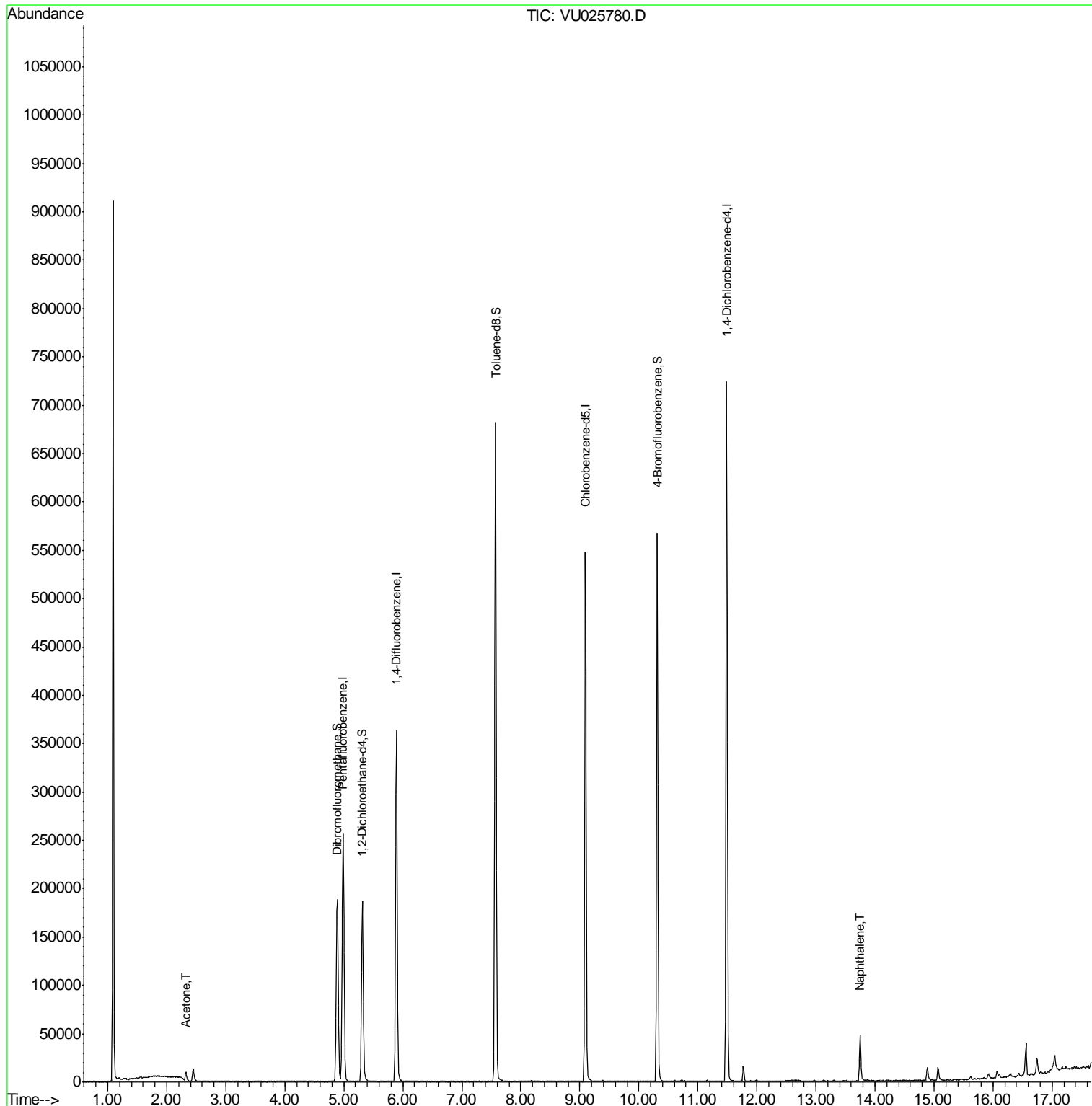
Internal Standards	R.T.	QIon	Response	Conc	Units	Dev(Min)
1) Pentafluorobenzene	4.99	168	200821	50.00	ug/l	0.00
34) 1,4-Difluorobenzene	5.89	114	314975	50.00	ug/l	0.00
63) Chlorobenzene-d5	9.09	117	313027	50.00	ug/l	0.00
72) 1,4-Dichlorobenzene-d4	11.49	152	193783	50.00	ug/l	0.00
System Monitoring Compounds						
33) 1,2-Dichloroethane-d4	5.31	65	152458	48.72	ug/l	0.00
Spiked Amount	50.000		Recovery	=	97.44%	
35) Dibromofluoromethane	4.89	113	129305	47.20	ug/l	0.00
Spiked Amount	50.000		Recovery	=	94.40%	
50) Toluene-d8	7.57	98	458237	47.80	ug/l	0.00
Spiked Amount	50.000		Recovery	=	95.60%	
62) 4-Bromofluorobenzene	10.31	95	183316	49.27	ug/l	0.00
Spiked Amount	50.000		Recovery	=	98.54%	
Target Compounds						
16) Acetone	2.32	43	9008	5.905	ug/l	95
95) Naphthalene	13.75	128	42327	4.119	ug/l	99

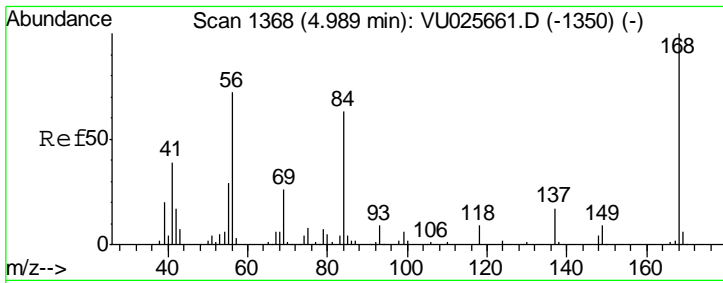
(#) = qualifier out of range (m) = manual integration (+) = signals summed

Data Path : Z:\VOASRV\HPCHEM1\MSVOA U\DATA\VU080118\
Data File : VU025780.D
Acq On : 01 Aug 2018 16:42
Operator : MD/SY
Sample : J4262-05
Misc : 5.0mL/MSVOA U/WATER
ALS Vial : 45 Sample Multiplier: 1

Instrument :
MSVOA_U
ClientSampled :
GW-02

Quant Time: Aug 02 04:55:48 2018
Quant Method : Z:\VOASRV\HPCHEM1\MSVOA_U\METHOD\82U072718W.M
Quant Title : SW846 8260
QLast Update : Tue Jul 31 16:07:47 2018
Response via : Initial Calibration

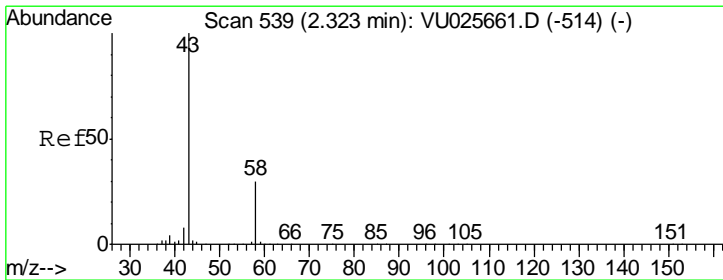
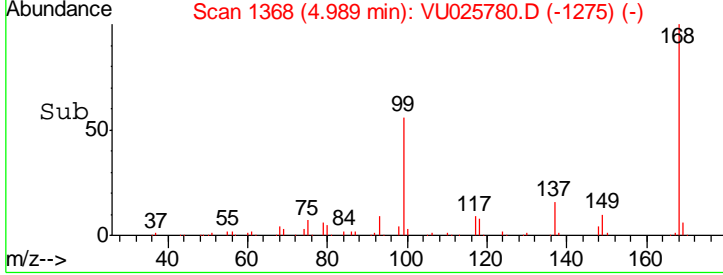
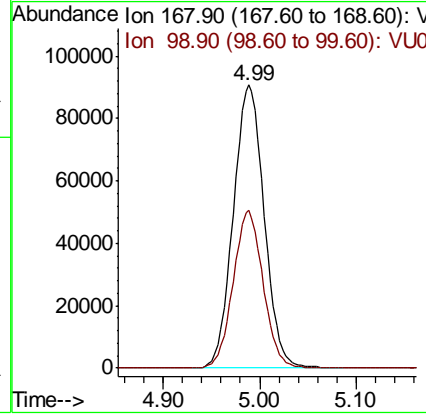
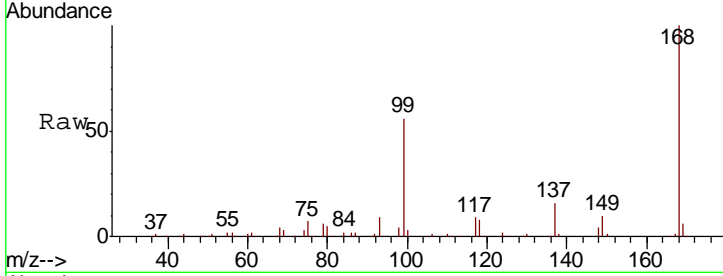




#1
 Pentafluorobenzene
 Concen: 50.000 ug/l
 RT: 4.99 min Scan# 1368
 Delta R.T. 0.00 min
 Lab File: VU025780.D
 Acq: 01 Aug 2018 16:42

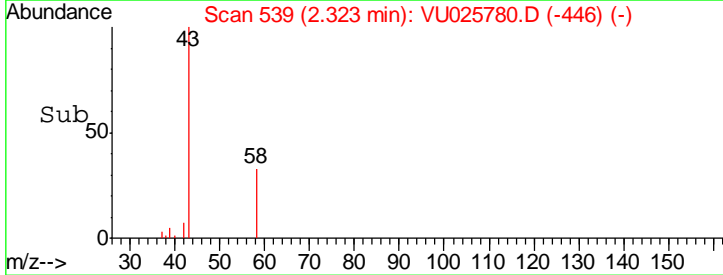
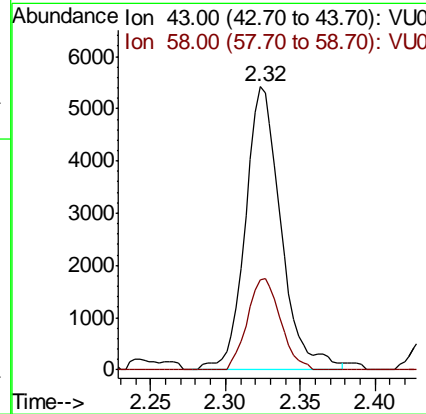
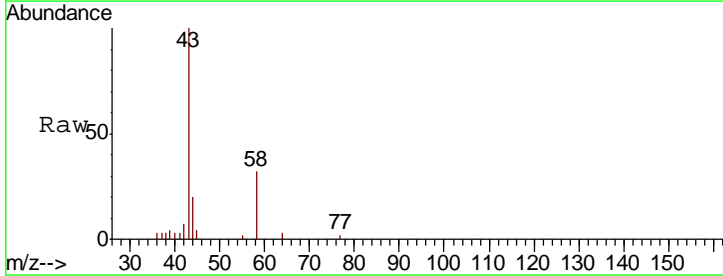
Instrument :
 MSVOA_U
ClientSampled :
 GW-02

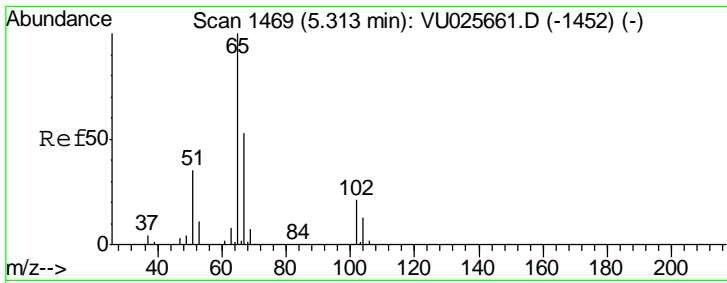
Tgt Ion: 168 Resp: 200821
 Ion Ratio Lower Upper
 168 100
 99 55.9 42.8 64.2



#16
 Acetone
 Concen: 5.905 ug/l
 RT: 2.32 min Scan# 539
 Delta R.T. 0.00 min
 Lab File: VU025780.D
 Acq: 01 Aug 2018 16:42

Tgt Ion: 43 Resp: 9008
 Ion Ratio Lower Upper
 43 100
 58 31.7 23.1 34.7

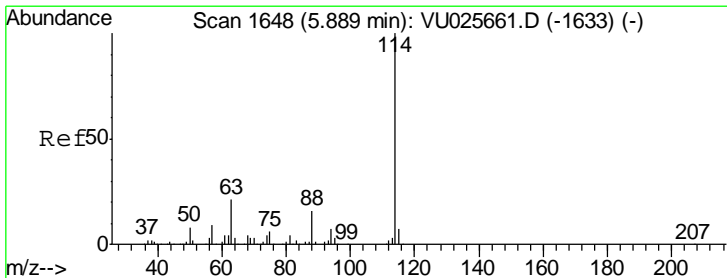
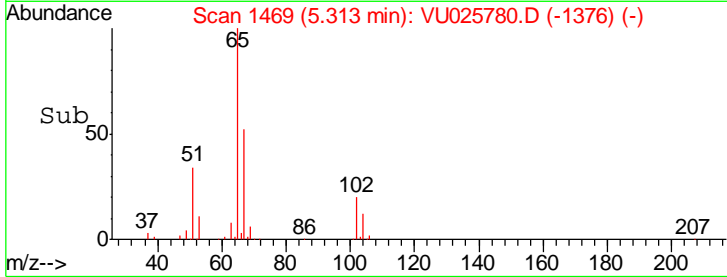
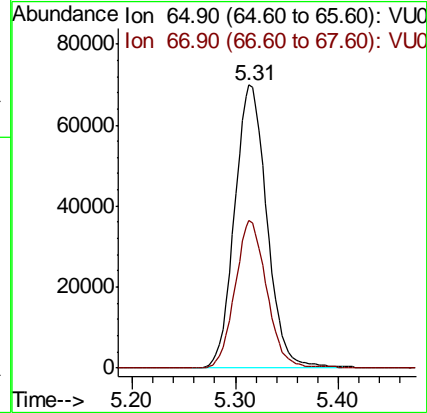
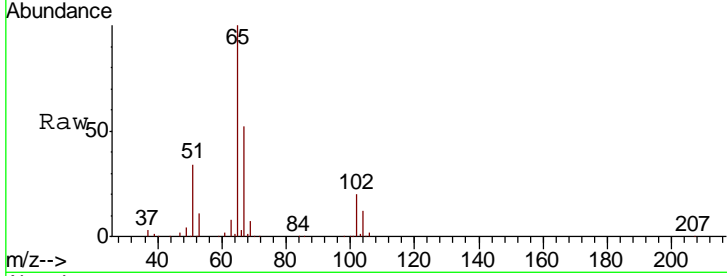




#33
 1,2-Dichloroethane-d4
 Concen: 48.724 ug/l
 RT: 5.31 min Scan# 1469
 Delta R.T. 0.00 min
 Lab File: VU025780.D
 Acq: 01 Aug 2018 16:42

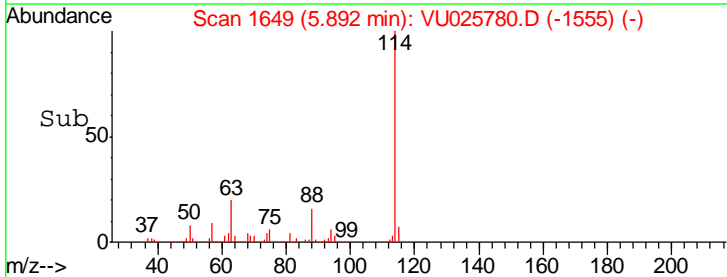
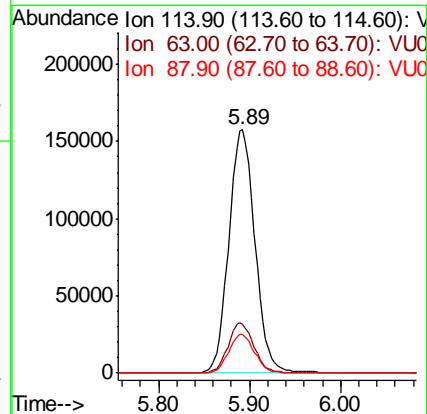
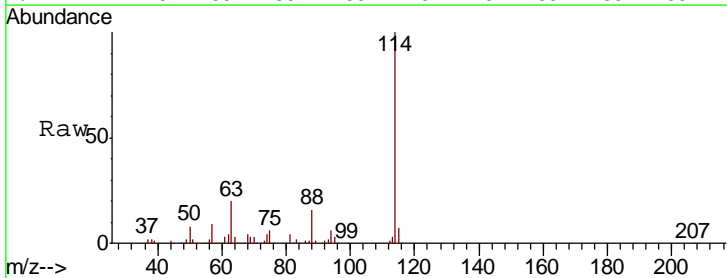
Instrument :
 MSVOA_U
 ClientSampled :
 GW-02

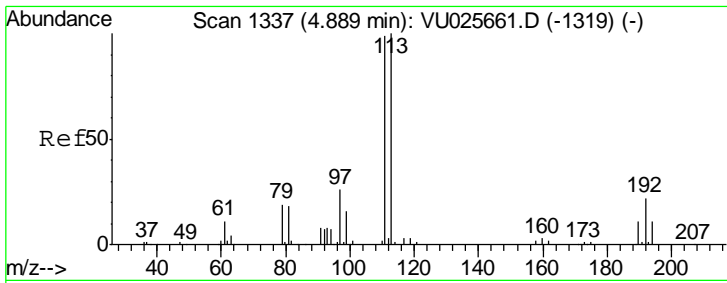
Tgt Ion	Resp	Lower	Upper
65	152458		
67	50.9	0.0	103.6



#34
 1,4-Difluorobenzene
 Concen: 50.000 ug/l
 RT: 5.89 min Scan# 1649
 Delta R.T. 0.00 min
 Lab File: VU025780.D
 Acq: 01 Aug 2018 16:42

Tgt Ion	Resp	Lower	Upper
114	314975		
63	20.4	0.0	41.6
88	15.9	0.0	32.4

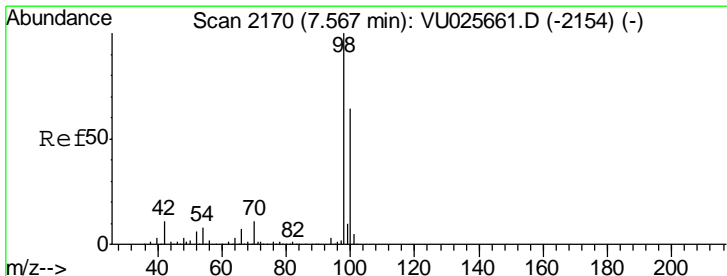
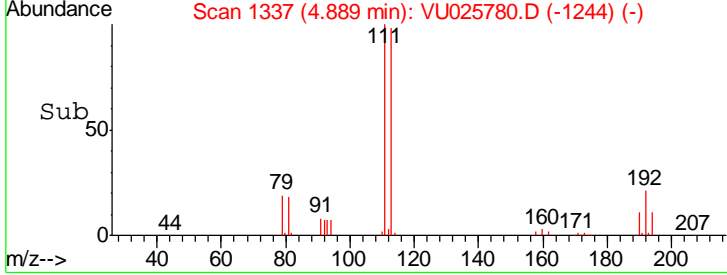
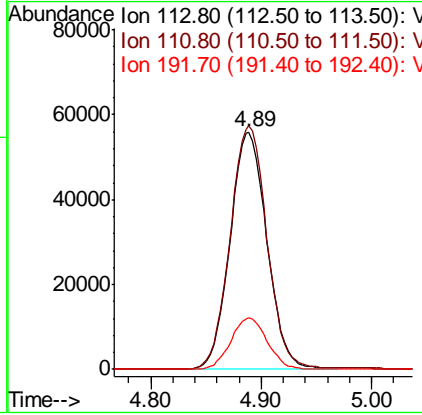
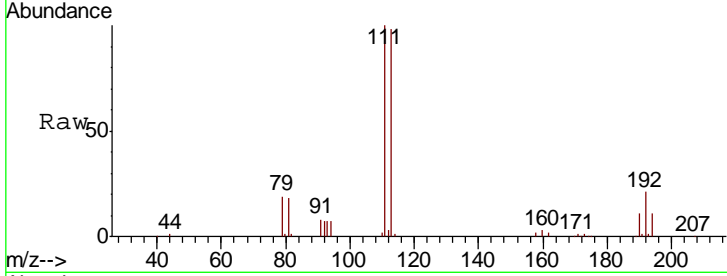




#35
 Dibromofluoromethane
 Concen: 47.200 ug/l
 RT: 4.89 min Scan# 1337
 Delta R.T. 0.00 min
 Lab File: VU025780.D
 Acq: 01 Aug 2018 16:42

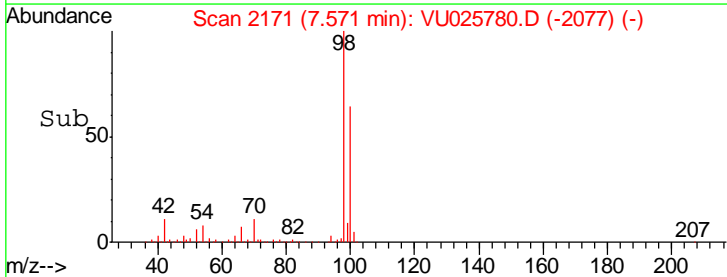
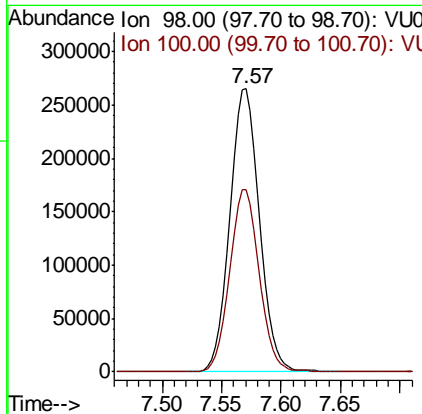
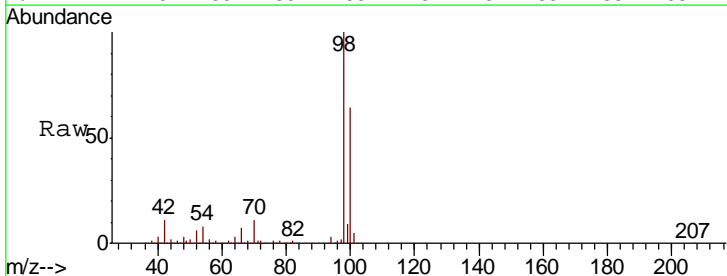
Instrument : MSVOA_U
 ClientSampled : GW-02

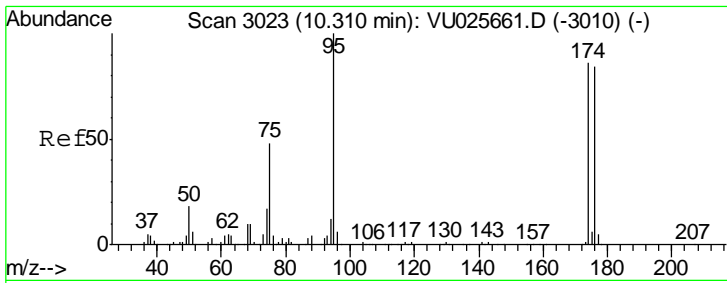
Tgt Ion	Resp	Lower	Upper
113	129305		
111	102.8	81.7	122.5
192	21.4	17.1	25.7



#50
 Toluene-d8
 Concen: 47.800 ug/l
 RT: 7.57 min Scan# 2171
 Delta R.T. 0.00 min
 Lab File: VU025780.D
 Acq: 01 Aug 2018 16:42

Tgt Ion	Resp	Lower	Upper
98	458237		
100	64.5	51.1	76.7

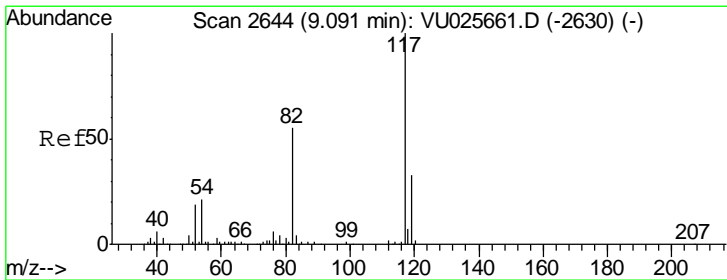
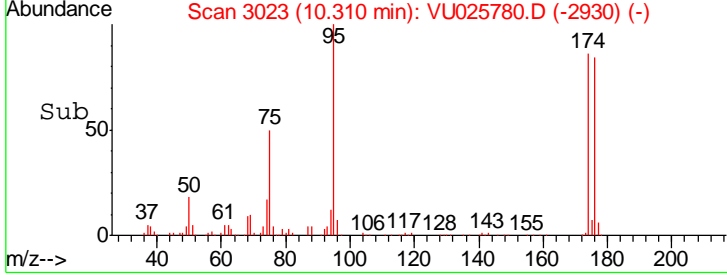
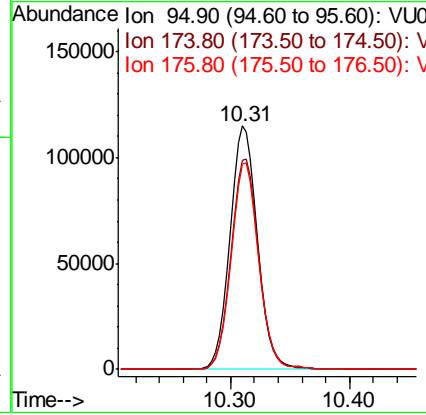
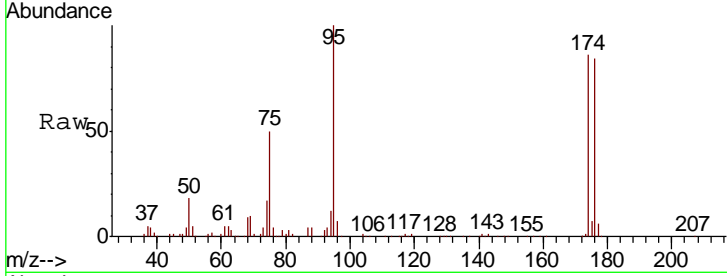




#62
 4-Bromofluorobenzene
 Concen: 49.267 ug/l
 RT: 10.31 min Scan# 3023
 Delta R.T. 0.00 min
 Lab File: VU025780.D
 Acq: 01 Aug 2018 16:42

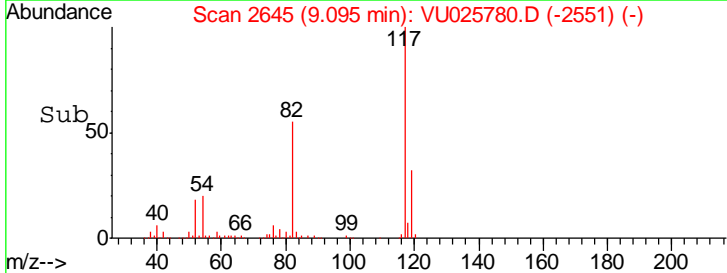
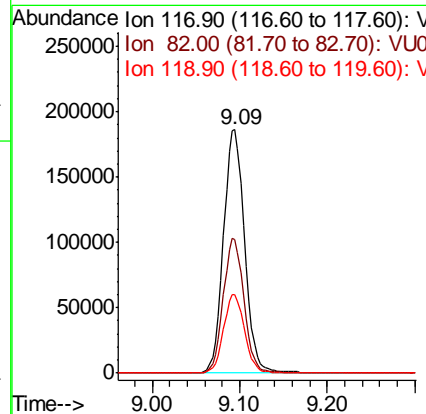
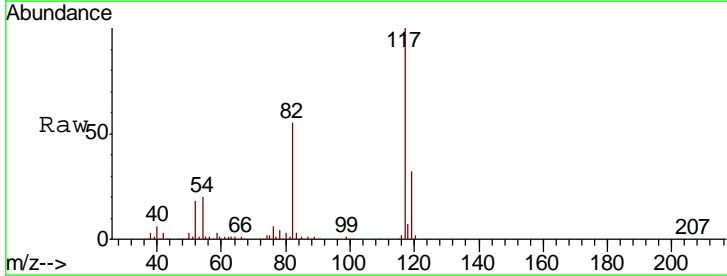
Instrument :
 MSVOA_U
 ClientSampled :
 GW-02

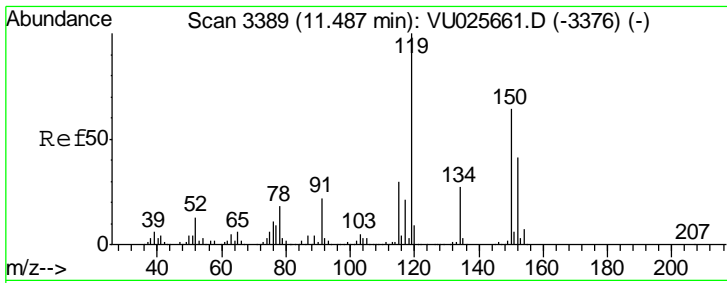
Tgt Ion	Resp	Lower	Upper
95	183316		
174	87.8	0.0	172.2
176	85.1	0.0	162.6



#63
 Chlorobenzene-d5
 Concen: 50.000 ug/l
 RT: 9.09 min Scan# 2645
 Delta R.T. 0.00 min
 Lab File: VU025780.D
 Acq: 01 Aug 2018 16:42

Tgt Ion	Resp	Lower	Upper
117	313027		
82	55.0	46.0	69.0
119	32.2	26.0	39.0

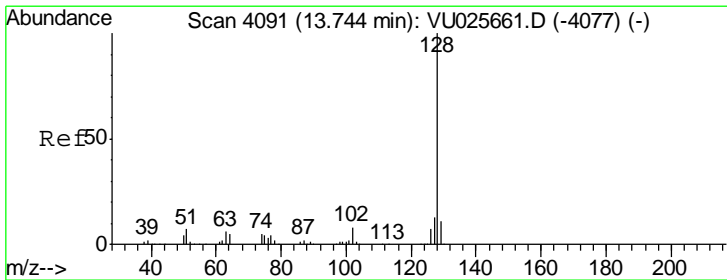
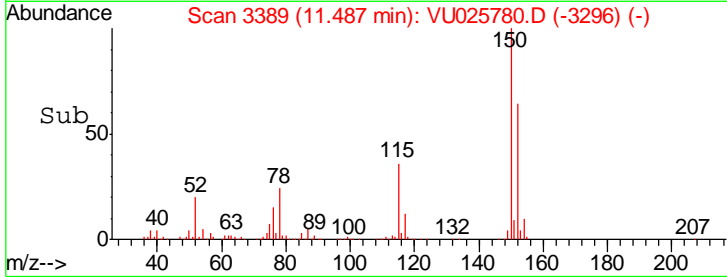
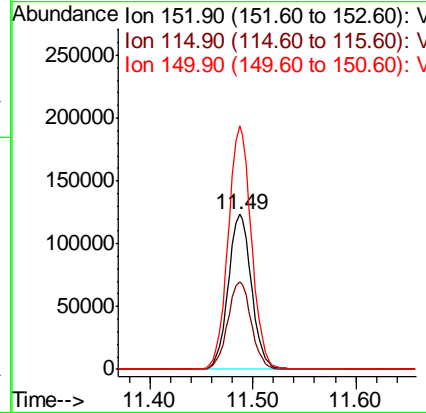
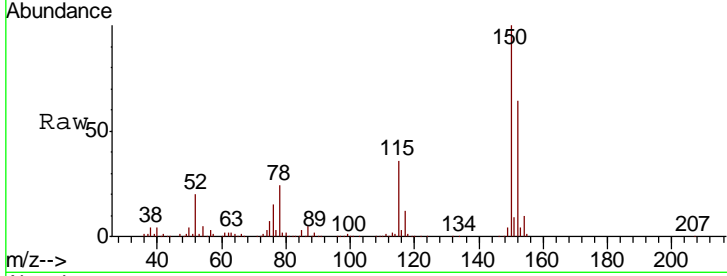




#72
 1,4-Dichlorobenzene-d4
 Concen: 50.000 ug/l
 RT: 11.49 min Scan# 3389
 Delta R.T. 0.00 min
 Lab File: VU025780.D
 Acq: 01 Aug 2018 16:42

Instrument :
 MSVOA_U
 ClientSampled :
 GW-02

Tgt Ion	Resp	Lower	Upper
152	100		
115	57.1	40.1	120.3
150	157.0	0.0	351.4



#95
 Naphthalene
 Concen: 4.119 ug/l
 RT: 13.75 min Scan# 4092
 Delta R.T. 0.00 min
 Lab File: VU025780.D
 Acq: 01 Aug 2018 16:42

Tgt Ion	Resp	Lower	Upper
128	100		
127	12.7	10.5	15.7
129	9.8	8.3	12.5

