

Data Path : Z:\VOASRV\HPCHEM1\MSVOA U\DATA\VU080119\
 Data File : VU033553.D
 Acq On : 01 Aug 2019 16:44
 Operator : JC/SP
 Sample : K4103-13
 Misc : 5.0mL/MSVOA U/WATER
 ALS Vial : 21 Sample Multiplier: 1

Instrument :
 MSVOA_U
 ClientSampleId :
 DB9F3

Integration Parameters: LSCINT.P

Integrator: RTE
 Smoothing : OFF
 Sampling : 1
 Start Thrs: 0.2
 Stop Thrs : 0

Filtering: 5
 Min Area: 0 % of largest Peak
 Max Peaks: 100
 Peak Location: TOP

If leading or trailing edge < 100 prefer < Baseline drop else tangent >
 Peak separation: 5

Method : Z:\VOASRV\HPCHEM1\MSVOA_U\METHOD\SOMULM073119WMA.M
 Title : VOC Analysis

Signal : TIC

peak #	R.T. min	first scan	max scan	last scan	PK TY	peak height	corr. area	corr. % max.	% of total
1	1.177	23	27	31	rBV2	2284	1855	0.15%	0.019%
2	1.389	86	93	108	rBV	205604	217009	17.34%	2.234%
3	1.672	173	181	199	rBV	188597	233477	18.66%	2.404%
4	2.257	353	363	376	rVV	314047	472226	37.74%	4.862%
5	2.322	377	383	392	rVB8	4476	7163	0.57%	0.074%
6	2.492	418	436	437	rBV6	3382	6496	0.52%	0.067%
7	2.685	492	496	503	rVV3	548	664	0.05%	0.007%
8	2.817	525	537	556	rVB2	5844	13058	1.04%	0.134%
9	3.090	619	622	625	rVB2	202	168	0.01%	0.002%
10	3.113	625	629	634	rVB3	223	171	0.01%	0.002%
11	3.215	658	661	669	rVB2	166	153	0.01%	0.002%
12	3.309	684	690	692	rBV2	233	171	0.01%	0.002%
13	3.373	705	710	715	rBV2	122	161	0.01%	0.002%
14	3.408	715	721	723	rBV	294	211	0.02%	0.002%
15	3.450	730	734	738	rBV3	269	251	0.02%	0.003%
16	3.566	764	770	773	rBV2	149	165	0.01%	0.002%
17	3.839	849	855	857	rBV2	211	188	0.02%	0.002%
18	3.936	879	885	889	rVB2	210	228	0.02%	0.002%
19	3.955	889	891	895	rBV2	267	223	0.02%	0.002%
20	4.051	914	921	926	rBV2	278	346	0.03%	0.004%
21	4.164	939	956	985	rBV	107737	328450	26.25%	3.382%
22	4.620	1081	1098	1121	rBV	205307	494926	39.56%	5.096%
23	4.765	1141	1143	1146	rBV	324	159	0.01%	0.002%
24	4.784	1147	1149	1154	rBV4	288	192	0.02%	0.002%
25	4.826	1159	1162	1166	rBV3	310	253	0.02%	0.003%
26	4.865	1166	1174	1178	rBV5	834	1107	0.09%	0.011%
27	4.968	1202	1206	1207	rBV2	327	249	0.02%	0.003%
28	5.058	1231	1234	1243	rVB2	289	291	0.02%	0.003%
29	5.109	1246	1250	1254	rVB2	196	169	0.01%	0.002%
30	5.148	1257	1262	1265	rBV2	234	231	0.02%	0.002%
31	5.183	1269	1273	1277	rVB2	223	187	0.01%	0.002%
32	5.222	1279	1285	1290	rBV2	214	243	0.02%	0.003%
33	5.318	1290	1315	1340	rBV2	429595	1251145	100.00%	12.881%
34	5.463	1358	1360	1364	rVB3	528	267	0.02%	0.003%

Data Path : Z:\VOASRV\HPCHEM1\MSVOA U\DATA\VU080119\
 Data File : VU033553.D
 Acq On : 01 Aug 2019 16:44
 Operator : JC/SP
 Sample : K4103-13
 Misc : 5.0mL/MSVOA U/WATER
 ALS Vial : 21 Sample Multiplier: 1

Instrument :
 MSVOA_U
 ClientSampleId :
 DB9F3

Integration Parameters: LSCINT.P

Integrator: RTE
 Smoothing : OFF
 Sampling : 1
 Start Thrs: 0.2
 Stop Thrs : 0

Filtering: 5
 Min Area: 0 % of largest Peak
 Max Peaks: 100
 Peak Location: TOP

If leading or trailing edge < 100 prefer < Baseline drop else tangent >
 Peak separation: 5

Method : Z:\VOASRV\HPCHEM1\MSVOA_U\METHOD\SOMULM073119WMA.M
 Title : VOC Analysis

35	5.566	1389	1392	1396	rBV	386	233	0.02%	0.002%
36	5.730	1438	1443	1445	rBV3	294	213	0.02%	0.002%
37	5.865	1470	1485	1504	rBV	366990	714889	57.14%	7.360%
38	6.173	1574	1581	1587	rBV4	888	1298	0.10%	0.013%
39	6.309	1606	1623	1645	rBV2	276453	555367	44.39%	5.718%
40	6.437	1660	1663	1665	rBV3	612	342	0.03%	0.004%
41	6.540	1693	1695	1702	rVB	194	148	0.01%	0.002%
42	6.727	1750	1753	1755	rVV2	274	148	0.01%	0.002%
43	6.739	1755	1757	1760	rVV2	294	194	0.02%	0.002%
44	6.797	1772	1775	1777	rBV	583	402	0.03%	0.004%
45	6.807	1777	1778	1784	rVB2	615	472	0.04%	0.005%
46	6.862	1793	1795	1798	rVB2	259	152	0.01%	0.002%
47	7.074	1858	1861	1868	rVB	197	156	0.01%	0.002%
48	7.119	1871	1875	1878	rBV2	202	187	0.01%	0.002%
49	7.209	1891	1903	1930	rBV	151481	279022	22.30%	2.873%
50	7.357	1946	1949	1950	rBV2	454	245	0.02%	0.003%
51	7.434	1971	1973	1977	rBV2	278	204	0.02%	0.002%
52	7.476	1983	1986	1992	rVB2	408	280	0.02%	0.003%
53	7.546	1994	2008	2034	rBV	573895	991772	79.27%	10.211%
54	7.833	2086	2097	2124	rBV	107699	193405	15.46%	1.991%
55	7.932	2126	2128	2133	rVB2	448	257	0.02%	0.003%
56	7.984	2141	2144	2151	rVB4	528	600	0.05%	0.006%
57	8.019	2151	2155	2160	rVB3	309	263	0.02%	0.003%
58	8.045	2160	2163	2167	rVB2	207	147	0.01%	0.002%
59	8.167	2190	2201	2209	rVV3	2468	4663	0.37%	0.048%
60	8.296	2230	2241	2276	rBV	366188	655532	52.39%	6.749%
61	8.601	2332	2336	2340	rBV2	365	439	0.04%	0.005%
62	8.646	2347	2350	2353	rBV2	286	224	0.02%	0.002%
63	8.726	2369	2375	2379	rBV	275	241	0.02%	0.002%
64	8.797	2394	2397	2400	rVV2	345	212	0.02%	0.002%
65	8.820	2401	2404	2408	rVB	266	189	0.02%	0.002%
66	8.968	2446	2450	2458	rVB3	352	328	0.03%	0.003%
67	9.070	2470	2482	2506	rBV	555996	914604	73.10%	9.416%
68	9.337	2562	2565	2567	rVB	232	160	0.01%	0.002%
69	9.360	2567	2572	2573	rBV	273	213	0.02%	0.002%
70	9.437	2594	2596	2599	rVV2	244	150	0.01%	0.002%
71	9.652	2657	2663	2665	rBV	297	222	0.02%	0.002%

Data Path : Z:\VOASRV\HPCHEM1\MSVOA U\DATA\VU080119\
 Data File : VU033553.D
 Acq On : 01 Aug 2019 16:44
 Operator : JC/SP
 Sample : K4103-13
 Misc : 5.0mL/MSVOA U/WATER
 ALS Vial : 21 Sample Multiplier: 1

Instrument :
 MSVOA_U
 ClientSampleId :
 DB9F3

Integration Parameters: LSCINT.P

Integrator: RTE
 Smoothing : OFF
 Sampling : 1
 Start Thrs: 0.2
 Stop Thrs : 0

Filtering: 5
 Min Area: 0 % of largest Peak
 Max Peaks: 100
 Peak Location: TOP

If leading or trailing edge < 100 prefer < Baseline drop else tangent >
 Peak separation: 5

Method : Z:\VOASRV\HPCHEM1\MSVOA_U\METHOD\SOMULM073119WMA.M
 Title : VOC Analysis

72	9.717	2680	2683	2688	rVB	196	160	0.01%	0.002%
73	9.759	2692	2696	2700	rBV2	267	226	0.02%	0.002%
74	9.852	2720	2725	2730	rBV2	442	545	0.04%	0.006%
75	9.951	2751	2756	2760	rVV2	244	189	0.02%	0.002%
76	10.080	2793	2796	2799	rVB2	330	231	0.02%	0.002%
77	10.099	2799	2802	2806	rVB2	325	225	0.02%	0.002%
78	10.151	2815	2818	2821	rVV	378	188	0.02%	0.002%
79	10.414	2887	2900	2921	rVV	407763	653057	52.20%	6.724%
80	10.524	2932	2934	2937	rBV2	301	221	0.02%	0.002%
81	10.595	2946	2956	2968	rVV6	1850	3232	0.26%	0.033%
82	10.643	2968	2971	2977	rVB3	225	211	0.02%	0.002%
83	10.704	2985	2990	2993	rBV	346	284	0.02%	0.003%
84	10.723	2993	2996	2999	rVV2	299	233	0.02%	0.002%
85	10.752	3002	3005	3009	rVB2	317	214	0.02%	0.002%
86	10.852	3032	3036	3040	rBV	369	358	0.03%	0.004%
87	10.884	3044	3046	3048	rBV	320	175	0.01%	0.002%
88	11.025	3085	3090	3093	rBV	376	293	0.02%	0.003%
89	11.061	3099	3101	3104	rVB2	380	209	0.02%	0.002%
90	11.228	3149	3153	3157	rBV3	237	196	0.02%	0.002%
91	11.405	3205	3208	3209	rBV2	405	243	0.02%	0.003%
92	11.469	3214	3228	3252	rBV	521298	820011	65.54%	8.443%
93	11.665	3287	3289	3292	rVB2	327	156	0.01%	0.002%
94	11.842	3332	3344	3375	rBV	543060	880334	70.36%	9.064%
95	12.038	3403	3405	3408	rBV2	479	233	0.02%	0.002%
96	12.389	3511	3514	3517	rBV2	264	178	0.01%	0.002%
97	12.704	3609	3612	3616	rBV2	316	298	0.02%	0.003%
98	12.890	3666	3670	3675	rVB3	382	374	0.03%	0.004%
99	14.109	4045	4049	4051	rBV	530	459	0.04%	0.005%
100	14.196	4074	4076	4079	rBV2	390	295	0.02%	0.003%

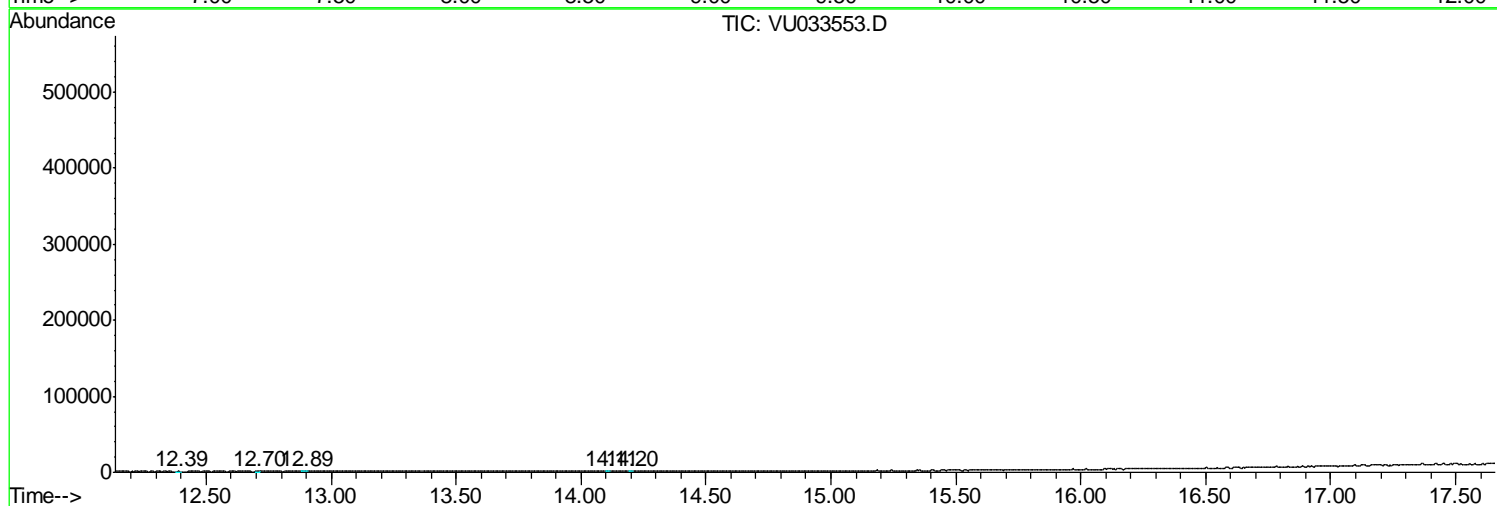
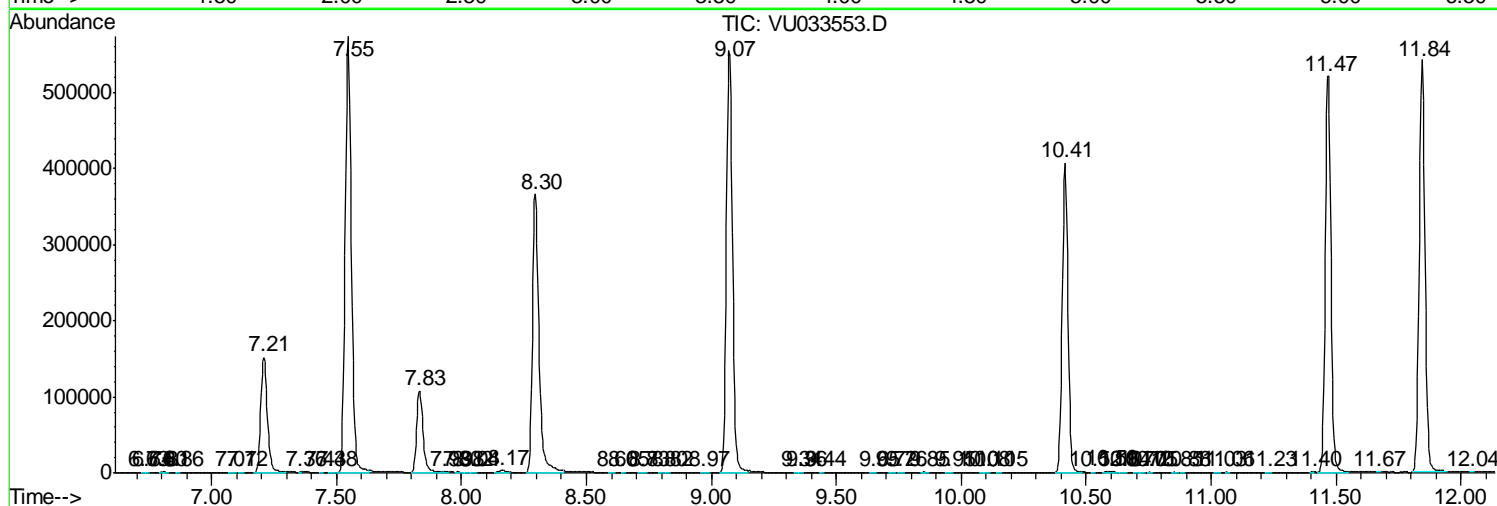
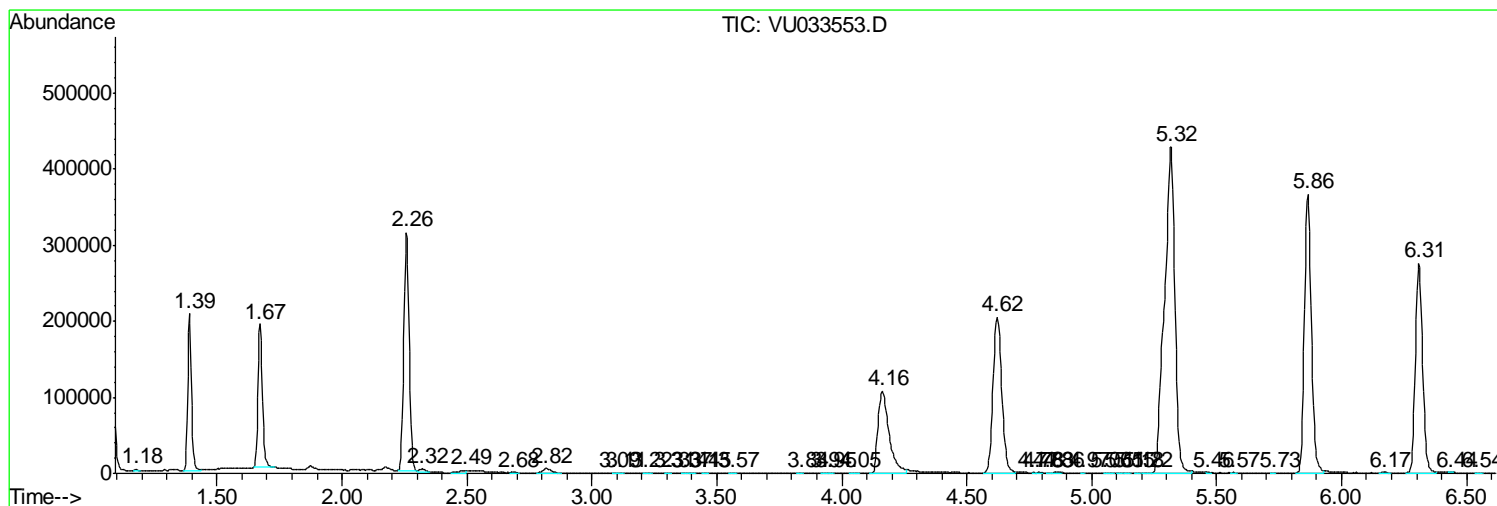
Sum of corrected areas: 9712854

Data Path : Z:\VOASRV\HPCHEM1\MSVOA U\DATA\VU080119\
 Data File : VU033553.D
 Acq On : 01 Aug 2019 16:44
 Operator : JC/SP
 Sample : K4103-13
 Misc : 5.0mL/MSVOA U/WATER
 ALS Vial : 21 Sample Multiplier: 1

Instrument :
 MSVOA_U
ClientSampled :
 DB9F3

Quant Method : Z:\VOASRV\HPCHEM1\MSVOA_U\METHOD\SOMULM073119WMA.M
 Quant Title : VOC Analysis

TIC Library : C:\DATABASE\NIST11.L
 TIC Integration Parameters: LSCINT.P



Data Path : Z:\VOASRV\HPCHEM1\MSVOA_U\DATA\VU080119\
Data File : VU033553.D
Acq On : 01 Aug 2019 16:44
Operator : JC/SP
Sample : K4103-13
Misc : 5.0mL/MSVOA_U/WATER
ALS Vial : 21 Sample Multiplier: 1

Instrument :
MSVOA_U
ClientSampleId :
DB9F3

Quant Method : Z:\VOASRV\HPCHEM1\MSVOA_U\METHOD\SOMULM073119WMA.M
Quant Title : VOC Analysis

TIC Library : C:\DATABASE\NIST11.L
TIC Integration Parameters: LSCINT.P

No Library Search Compounds Detected

Data Path : Z:\VOASRV\HPCHEM1\MSVOA_U\DATA\VU080119\
Data File : VU033553.D
Acq On : 01 Aug 2019 16:44
Operator : JC/SP
Sample : K4103-13
Misc : 5.0mL/MSVOA_U/WATER
ALS Vial : 21 Sample Multiplier: 1

Instrument :
MSVOA_U
ClientSampleId :
DB9F3

Quant Method : Z:\VOASRV\HPCHEM1\MSVOA_U\METHOD\SOMULM073119WMA.M
Quant Title : VOC Analysis

TIC Library : C:\DATABASE\NIST11.L
TIC Integration Parameters: LSCINT.P

TIC Top Hit name	RT	EstConc	Units	Response	--Internal Standard--			
					#	RT	Resp	Conc
