

Data Path : Z:\VOASRV\HPCHEM1\MSVOA U\DATA\VU080218\  
 Data File : VU025801.D  
 Acq On : 02 Aug 2018 18:51  
 Operator : MD/SY  
 Sample : J4265-02  
 Misc : 5.0mL/MSVOA U/WATER  
 ALS Vial : 15 Sample Multiplier: 1

Instrument :  
 MSVOA\_U  
 ClientSampled :  
 C0AB0

Integration Parameters: LSCINT.P

Integrator: RTE  
 Smoothing : OFF  
 Sampling : 1  
 Start Thrs: 0.2  
 Stop Thrs : 0

Filtering: 5  
 Min Area: 0 % of largest Peak  
 Max Peaks: 100  
 Peak Location: TOP

If leading or trailing edge < 100 prefer < Baseline drop else tangent >  
 Peak separation: 5

Method : Z:\VOASRV\HPCHEM1\MSVOA\_U\METHOD\SOMULM072018WMA.M  
 Title : VOC Analysis

Signal : TIC

peak #	R.T. min	first scan	max scan	last scan	PK TY	peak height	corr. area	corr. % max.	% of total
1	0.683	25	29	32	rBV2	290	262	0.03%	0.003%
2	0.703	32	35	37	rBV	364	244	0.02%	0.003%
3	0.883	87	91	97	rBV3	367	509	0.05%	0.006%
4	1.056	139	145	146	rBV	1049	877	0.09%	0.010%
5	1.088	147	155	177	rBV	243728	270251	26.93%	3.166%
6	1.400	245	252	268	rBV	125671	132884	13.24%	1.557%
7	1.680	332	339	355	rVB	91518	116636	11.62%	1.367%
8	2.272	513	523	534	rBV	217314	323147	32.20%	3.786%
9	2.448	568	578	590	rBV2	5807	11408	1.14%	0.134%
10	2.532	602	604	610	rVB3	556	493	0.05%	0.006%
11	2.561	610	613	615	rBV	588	274	0.03%	0.003%
12	2.616	627	630	635	rVV5	664	735	0.07%	0.009%
13	2.709	652	659	663	rBV2	441	580	0.06%	0.007%
14	2.841	686	700	716	rVB3	4466	9902	0.99%	0.116%
15	2.902	716	719	721	rBV	324	239	0.02%	0.003%
16	3.037	758	761	762	rBV2	403	257	0.03%	0.003%
17	3.098	778	780	784	rVV2	379	276	0.03%	0.003%
18	3.143	788	794	797	rVV2	448	520	0.05%	0.006%
19	3.214	813	816	821	rVB2	336	346	0.03%	0.004%
20	3.246	821	826	827	rBV2	301	267	0.03%	0.003%
21	3.381	861	868	872	rVV3	492	630	0.06%	0.007%
22	3.558	919	923	924	rBV	333	280	0.03%	0.003%
23	3.625	938	944	948	rBV2	271	249	0.02%	0.003%
24	3.718	971	973	978	rVV2	288	239	0.02%	0.003%
25	3.760	982	986	989	rBV2	349	321	0.03%	0.004%
26	3.812	998	1002	1008	rVB2	321	355	0.04%	0.004%
27	3.841	1008	1011	1015	rBV2	272	254	0.03%	0.003%
28	3.934	1038	1040	1043	rBV2	366	289	0.03%	0.003%
29	3.982	1050	1055	1060	rBV3	335	408	0.04%	0.005%
30	4.046	1070	1075	1078	rBV3	302	288	0.03%	0.003%
31	4.072	1079	1083	1090	rVB3	471	518	0.05%	0.006%
32	4.181	1100	1117	1147	rBV	89548	250906	25.00%	2.940%
33	4.378	1176	1178	1181	rVB3	457	268	0.03%	0.003%
34	4.503	1213	1217	1218	rBV3	385	291	0.03%	0.003%

Data Path : Z:\VOASRV\HPCHEM1\MSVOA U\DATA\VU080218\  
 Data File : VU025801.D  
 Acq On : 02 Aug 2018 18:51  
 Operator : MD/SY  
 Sample : J4265-02  
 Misc : 5.0mL/MSVOA U/WATER  
 ALS Vial : 15 Sample Multiplier: 1

Instrument :  
 MSVOA\_U  
 ClientSampleId :  
 C0AB0

## Integration Parameters: LSCINT.P

Integrator: RTE  
 Smoothing : OFF  
 Sampling : 1  
 Start Thrs: 0.2  
 Stop Thrs : 0

Filtering: 5  
 Min Area: 0 % of largest Peak  
 Max Peaks: 100  
 Peak Location: TOP

If leading or trailing edge < 100 prefer < Baseline drop else tangent >  
 Peak separation: 5

Method : Z:\VOASRV\HPCHEM1\MSVOA\_U\METHOD\SOMULM072018WMA.M  
 Title : VOC Analysis

35	4.574	1237	1239	1242	rVB	543	325	0.03%	0.004%
36	4.651	1244	1263	1283	rBV	171268	400937	39.96%	4.697%
37	4.857	1321	1327	1328	rBV	359	307	0.03%	0.004%
38	4.879	1328	1334	1335	rBV3	577	518	0.05%	0.006%
39	4.966	1357	1361	1362	rBV2	361	311	0.03%	0.004%
40	4.982	1362	1366	1368	rVV2	356	285	0.03%	0.003%
41	5.345	1454	1479	1508	rBV2	340988	1003429	100.00%	11.756%
42	5.606	1557	1560	1565	rBV3	302	303	0.03%	0.004%
43	5.670	1577	1580	1583	rVB2	611	369	0.04%	0.004%
44	5.702	1586	1590	1594	rBV	524	532	0.05%	0.006%
45	5.738	1597	1601	1604	rBV2	279	279	0.03%	0.003%
46	5.889	1632	1648	1669	rBV	369411	726582	72.41%	8.513%
47	6.175	1733	1737	1740	rVB	406	332	0.03%	0.004%
48	6.194	1740	1743	1745	rBV2	382	297	0.03%	0.003%
49	6.336	1770	1787	1809	rBV	223356	449454	44.79%	5.266%
50	6.461	1822	1826	1832	rVB5	837	802	0.08%	0.009%
51	6.609	1867	1872	1874	rVV3	296	251	0.03%	0.003%
52	6.754	1914	1917	1922	rVB2	441	364	0.04%	0.004%
53	6.786	1922	1927	1931	rBV3	441	478	0.05%	0.006%
54	7.008	1991	1996	2000	rBV2	247	238	0.02%	0.003%
55	7.037	2000	2005	2009	rBV2	386	346	0.03%	0.004%
56	7.233	2053	2066	2086	rBV	135782	241360	24.05%	2.828%
57	7.384	2111	2113	2116	rBV3	454	292	0.03%	0.003%
58	7.506	2148	2151	2155	rVB2	280	239	0.02%	0.003%
59	7.570	2155	2171	2191	rBV	470001	825041	82.22%	9.666%
60	7.853	2247	2259	2275	rBV2	94648	163279	16.27%	1.913%
61	8.033	2312	2315	2320	rVB3	683	607	0.06%	0.007%
62	8.107	2333	2338	2340	rBV2	322	281	0.03%	0.003%
63	8.181	2353	2361	2372	rVV3	2454	4766	0.47%	0.056%
64	8.313	2390	2402	2437	rBV	283061	501695	50.00%	5.878%
65	8.477	2451	2453	2457	rBV3	557	426	0.04%	0.005%
66	8.921	2584	2591	2595	rBV2	322	384	0.04%	0.004%
67	9.094	2629	2645	2683	rBV	526034	883861	88.08%	10.355%
68	9.249	2689	2693	2695	rBV	513	361	0.04%	0.004%
69	9.374	2728	2732	2733	rBV3	543	361	0.04%	0.004%
70	9.487	2761	2767	2770	rBV3	273	333	0.03%	0.004%
71	9.561	2787	2790	2792	rBV2	531	320	0.03%	0.004%

Data Path : Z:\VOASRV\HPCHEM1\MSVOA U\DATA\VU080218\  
 Data File : VU025801.D  
 Acq On : 02 Aug 2018 18:51  
 Operator : MD/SY  
 Sample : J4265-02  
 Misc : 5.0mL/MSVOA U/WATER  
 ALS Vial : 15 Sample Multiplier: 1

Instrument :  
 MSVOA\_U  
 ClientSampleId :  
 C0AB0

## Integration Parameters: LSCINT.P

Integrator: RTE  
 Smoothing : OFF  
 Sampling : 1  
 Start Thrs: 0.2  
 Stop Thrs : 0

Filtering: 5  
 Min Area: 0 % of largest Peak  
 Max Peaks: 100  
 Peak Location: TOP

If leading or trailing edge < 100 prefer < Baseline drop else tangent >  
 Peak separation: 5

Method : Z:\VOASRV\HPCHEM1\MSVOA\_U\METHOD\SOMULM072018WMA.M  
 Title : VOC Analysis

72	9.673	2821	2825	2828	rVB3	434	381	0.04%	0.004%
73	9.689	2828	2830	2837	rVB	414	432	0.04%	0.005%
74	9.731	2837	2843	2845	rBV	485	465	0.05%	0.005%
75	9.783	2855	2859	2862	rBV2	376	315	0.03%	0.004%
76	9.911	2895	2899	2904	rBV2	266	302	0.03%	0.004%
77	9.953	2908	2912	2919	rVB2	384	450	0.04%	0.005%
78	9.988	2919	2923	2924	rBV2	353	311	0.03%	0.004%
79	10.027	2931	2935	2943	rVB2	391	531	0.05%	0.006%
80	10.236	2991	3000	3009	rVV5	1717	2848	0.28%	0.033%
81	10.310	3017	3023	3036	rBV5	1352	2561	0.26%	0.030%
82	10.371	3037	3042	3045	rBV3	257	245	0.02%	0.003%
83	10.435	3049	3062	3082	rVB	311250	500482	49.88%	5.864%
84	10.512	3082	3086	3092	rBV2	385	436	0.04%	0.005%
85	10.545	3092	3096	3098	rBV3	282	245	0.02%	0.003%
86	10.615	3108	3118	3123	rBV6	2497	3728	0.37%	0.044%
87	10.979	3228	3231	3234	rVB2	490	337	0.03%	0.004%
88	10.998	3234	3237	3241	rBV3	336	279	0.03%	0.003%
89	11.197	3295	3299	3302	rBV	305	295	0.03%	0.003%
90	11.297	3327	3330	3336	rVB2	447	380	0.04%	0.004%
91	11.345	3339	3345	3349	rBV2	561	698	0.07%	0.008%
92	11.419	3364	3368	3373	rBV3	797	785	0.08%	0.009%
93	11.487	3376	3389	3412	rVV	559635	891325	88.83%	10.443%
94	11.760	3470	3474	3476	rBV2	880	742	0.07%	0.009%
95	11.863	3494	3506	3529	rBV	494614	788775	78.61%	9.241%
96	12.017	3548	3554	3556	rBV2	607	611	0.06%	0.007%
97	13.049	3872	3875	3878	rBV2	419	361	0.04%	0.004%
98	14.126	4208	4210	4213	rVB2	542	316	0.03%	0.004%
99	14.615	4359	4362	4364	rBV2	739	441	0.04%	0.005%
100	15.126	4517	4521	4522	rBV2	548	399	0.04%	0.005%

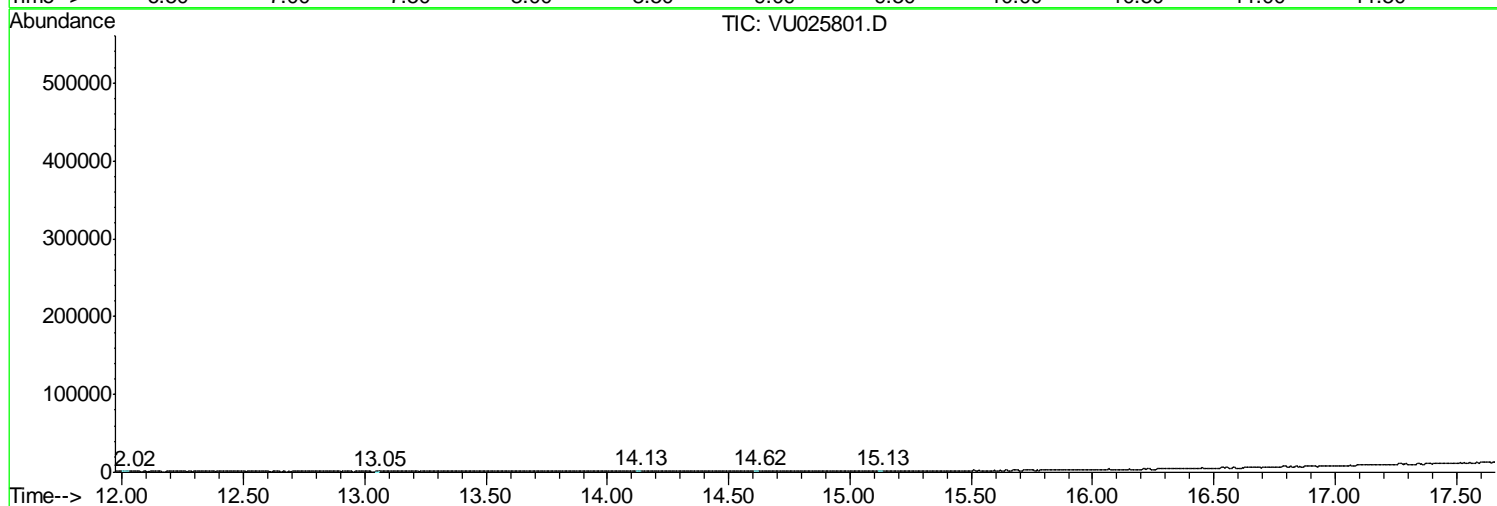
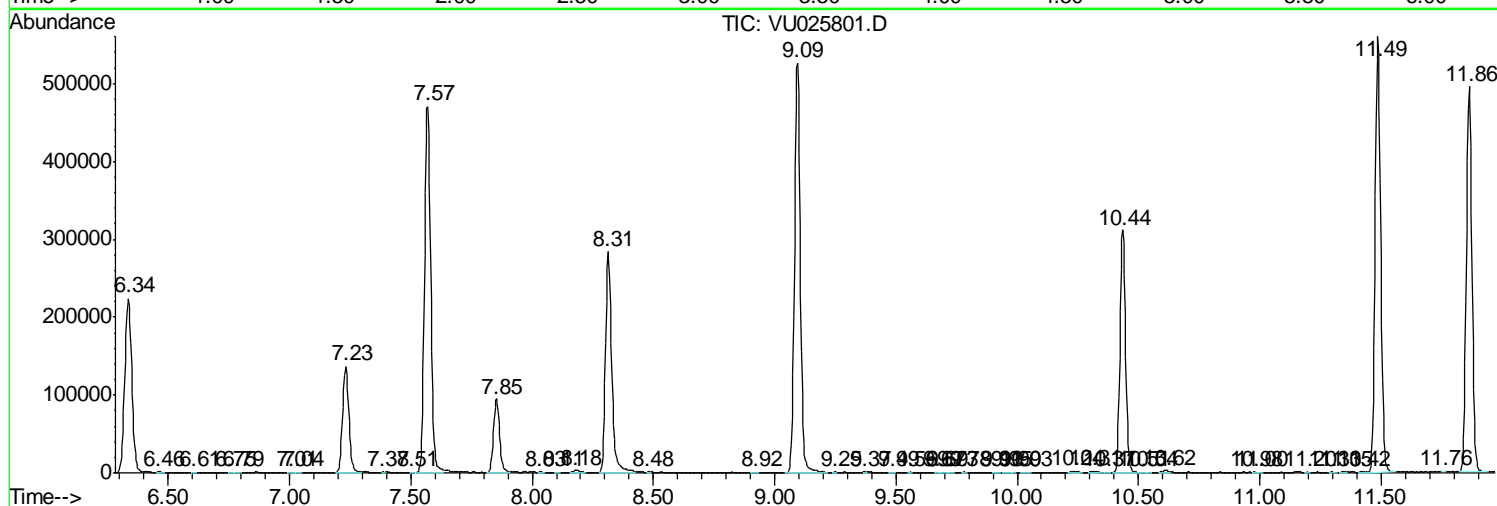
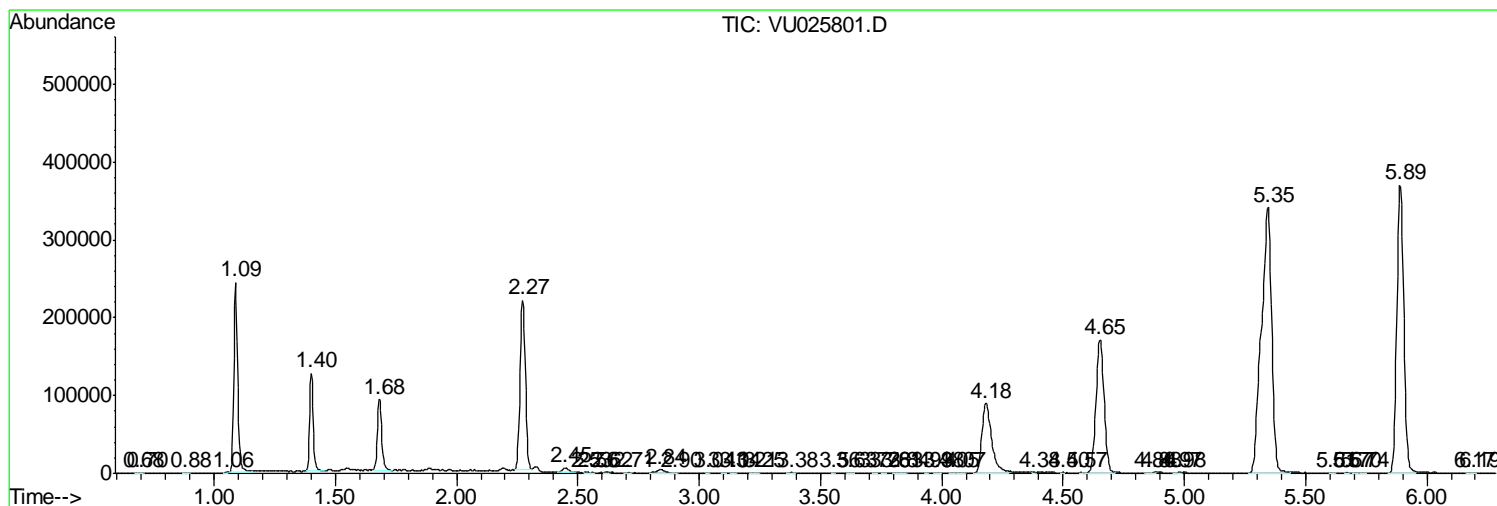
Sum of corrected areas: 8535224

Data Path : Z:\VOASRV\HPCHEM1\MSVOA U\DATA\VU080218\  
 Data File : VU025801.D  
 Acq On : 02 Aug 2018 18:51  
 Operator : MD/SY  
 Sample : J4265-02  
 Misc : 5.0mL/MSVOA U/WATER  
 ALS Vial : 15 Sample Multiplier: 1

**Instrument :**  
 MSVOA\_U  
**ClientSampled :**  
 COAB0

Quant Method : Z:\VOASRV\HPCHEM1\MSVOA\_U\METHOD\SOMULM072018WMA.M  
 Quant Title : VOC Analysis

TIC Library : C:\DATABASE\NIST11.L  
 TIC Integration Parameters: LSCINT.P



Data Path : Z:\VOASRV\HPCHEM1\MSVOA\_U\DATA\VU080218\  
Data File : VU025801.D  
Acq On : 02 Aug 2018 18:51  
Operator : MD/SY  
Sample : J4265-02  
Misc : 5.0mL/MSVOA\_U/WATER  
ALS Vial : 15 Sample Multiplier: 1

Instrument :  
MSVOA\_U  
ClientSampleId :  
C0AB0

Quant Method : Z:\VOASRV\HPCHEM1\MSVOA\_U\METHOD\SOMULM072018WMA.M  
Quant Title : VOC Analysis

TIC Library : C:\DATABASE\NIST11.L  
TIC Integration Parameters: LSCINT.P

No Library Search Compounds Detected

\*\*\*\*\*

Data Path : Z:\VOASRV\HPCHEM1\MSVOA\_U\DATA\VU080218\  
Data File : VU025801.D  
Acq On : 02 Aug 2018 18:51  
Operator : MD/SY  
Sample : J4265-02  
Misc : 5.0mL/MSVOA\_U/WATER  
ALS Vial : 15 Sample Multiplier: 1

Instrument :  
MSVOA\_U  
ClientSampleId :  
C0AB0

Quant Method : Z:\VOASRV\HPCHEM1\MSVOA\_U\METHOD\SOMULM072018WMA.M  
Quant Title : VOC Analysis

TIC Library : C:\DATABASE\NIST11.L  
TIC Integration Parameters: LSCINT.P

TIC Top Hit name	RT	EstConc	Units	Response	--Internal Standard--			
					#	RT	Resp	Conc

---