

Data Path : Z:\VOASRV\HPCHEM1\MSVOA U\DATA\VU080418\
 Data File : VU025822.D
 Acq On : 03 Aug 2018 16:50
 Operator : MD/SY
 Sample : J4265-15
 Misc : 5.0mL/MSVOA U/WATER
 ALS Vial : 5 Sample Multiplier: 1

Instrument :
 MSVOA_U
 ClientSampleId :
 C0AB3

Integration Parameters: LSCINT.P

Integrator: RTE
 Smoothing : OFF
 Sampling : 1
 Start Thrs: 0.2
 Stop Thrs : 0

Filtering: 5
 Min Area: 0 % of largest Peak
 Max Peaks: 100
 Peak Location: TOP

If leading or trailing edge < 100 prefer < Baseline drop else tangent >
 Peak separation: 5

Method : Z:\VOASRV\HPCHEM1\MSVOA_U\METHOD\SOMULM072018WMA.M
 Title : VOC Analysis

Signal : TIC

peak #	R.T. min	first scan	max scan	last scan	PK TY	peak height	corr. area	corr. % max.	% of total
1	0.622	8	10	11	rBV	161	75	0.01%	0.001%
2	0.670	21	25	30	rBV2	491	430	0.04%	0.005%
3	0.712	34	38	43	rBV	292	257	0.03%	0.003%
4	0.738	43	46	47	rBV	64	39	0.00%	0.000%
5	0.744	47	48	49	rBV	201	65	0.01%	0.001%
6	0.786	58	61	64	rBV2	214	181	0.02%	0.002%
7	0.812	66	69	72	rVB	342	176	0.02%	0.002%
8	0.831	72	75	76	rBV	374	211	0.02%	0.002%
9	0.857	80	83	86	rVB	459	302	0.03%	0.004%
10	0.873	86	88	91	rBV2	293	184	0.02%	0.002%
11	0.899	93	96	98	rBV	193	97	0.01%	0.001%
12	0.915	98	101	104	rBV3	260	211	0.02%	0.002%
13	1.018	131	133	135	rVB2	215	115	0.01%	0.001%
14	1.089	147	155	176	rBV	666560	718320	74.20%	8.424%
15	1.400	245	252	265	rBV	113558	119639	12.36%	1.403%
16	1.683	333	340	356	rVB	88961	112958	11.67%	1.325%
17	2.275	514	524	535	rBV	201239	304853	31.49%	3.575%
18	3.172	801	803	805	rBV2	254	155	0.02%	0.002%
19	3.291	838	840	843	rBV2	339	250	0.03%	0.003%
20	3.506	903	907	911	rBV3	233	238	0.02%	0.003%
21	3.596	933	935	938	rBV	232	146	0.02%	0.002%
22	3.770	987	989	991	rBV2	264	170	0.02%	0.002%
23	3.838	1006	1010	1013	rBV3	275	295	0.03%	0.003%
24	3.944	1041	1043	1046	rBV2	262	153	0.02%	0.002%
25	4.031	1068	1070	1074	rVB	333	208	0.02%	0.002%
26	4.082	1082	1086	1088	rVB	312	185	0.02%	0.002%
27	4.101	1089	1092	1093	rBV	214	100	0.01%	0.001%
28	4.182	1102	1117	1148	rBV	73019	200573	20.72%	2.352%
29	4.522	1217	1223	1228	rBV3	464	672	0.07%	0.008%
30	4.651	1244	1263	1285	rBV	166197	387102	39.99%	4.540%
31	4.767	1296	1299	1300	rBV2	283	155	0.02%	0.002%
32	4.802	1309	1310	1313	rBV	269	153	0.02%	0.002%
33	4.831	1317	1319	1320	rBV	126	34	0.00%	0.000%
34	4.841	1320	1322	1327	rBV2	225	164	0.02%	0.002%

Data Path : Z:\VOASRV\HPCHEM1\MSVOA U\DATA\VU080418\
 Data File : VU025822.D
 Acq On : 03 Aug 2018 16:50
 Operator : MD/SY
 Sample : J4265-15
 Misc : 5.0mL/MSVOA U/WATER
 ALS Vial : 5 Sample Multiplier: 1

Instrument :
 MSVOA_U
 ClientSampleId :
 C0AB3

Integration Parameters: LSCINT.P

Integrator: RTE
 Smoothing : OFF
 Sampling : 1
 Start Thrs: 0.2
 Stop Thrs : 0

Filtering: 5
 Min Area: 0 % of largest Peak
 Max Peaks: 100
 Peak Location: TOP

If leading or trailing edge < 100 prefer < Baseline drop else tangent >
 Peak separation: 5

Method : Z:\VOASRV\HPCHEM1\MSVOA_U\METHOD\SOMULM072018WMA.M
 Title : VOC Analysis

35	4.883	1330	1335	1336	rBV2	648	590	0.06%	0.007%
36	5.117	1405	1408	1411	rBV	215	121	0.01%	0.001%
37	5.133	1411	1413	1414	rBV	178	68	0.01%	0.001%
38	5.159	1419	1421	1424	rVB	197	113	0.01%	0.001%
39	5.198	1431	1433	1438	rVB	263	161	0.02%	0.002%
40	5.220	1438	1440	1444	rBV3	321	246	0.03%	0.003%
41	5.243	1444	1447	1449	rBV	190	132	0.01%	0.002%
42	5.346	1454	1479	1509	rVV2	320728	968093	100.00%	11.353%
43	5.744	1600	1603	1605	rBV2	393	280	0.03%	0.003%
44	5.818	1620	1626	1627	rBV	242	170	0.02%	0.002%
45	5.838	1630	1632	1633	rVV	363	158	0.02%	0.002%
46	5.889	1634	1648	1678	rVV	336257	653798	67.53%	7.667%
47	6.127	1717	1722	1724	rBV3	374	429	0.04%	0.005%
48	6.220	1749	1751	1756	rVB	272	155	0.02%	0.002%
49	6.246	1756	1759	1765	rBV2	380	350	0.04%	0.004%
50	6.336	1772	1787	1806	rBV	219645	435026	44.94%	5.102%
51	6.571	1856	1860	1863	rBV2	310	277	0.03%	0.003%
52	6.603	1865	1870	1871	rBV2	310	235	0.02%	0.003%
53	6.718	1902	1906	1909	rBV2	441	403	0.04%	0.005%
54	6.796	1926	1930	1936	rBV2	272	380	0.04%	0.004%
55	7.111	2022	2028	2030	rBV2	392	398	0.04%	0.005%
56	7.230	2053	2065	2090	rBV	127971	230709	23.83%	2.706%
57	7.477	2139	2142	2148	rBV3	431	345	0.04%	0.004%
58	7.567	2156	2170	2189	rBV	441606	774502	80.00%	9.083%
59	7.744	2223	2225	2227	rVB	458	218	0.02%	0.003%
60	7.854	2247	2259	2285	rBV2	89439	155166	16.03%	1.820%
61	8.181	2352	2361	2371	rBV3	6530	10817	1.12%	0.127%
62	8.313	2391	2402	2428	rBV	233192	416514	43.02%	4.885%
63	8.500	2457	2460	2462	rBV	496	261	0.03%	0.003%
64	8.943	2595	2598	2600	rBV2	297	189	0.02%	0.002%
65	9.095	2632	2645	2667	rBV	473385	805581	83.21%	9.447%
66	9.255	2689	2695	2701	rBV5	1517	1898	0.20%	0.022%
67	9.368	2724	2730	2731	rBV4	3137	2501	0.26%	0.029%
68	9.509	2767	2774	2777	rBV	350	419	0.04%	0.005%
69	9.558	2785	2789	2792	rBV2	522	467	0.05%	0.005%
70	9.741	2842	2846	2854	rBV3	837	1187	0.12%	0.014%
71	9.898	2892	2895	2900	rBV3	447	425	0.04%	0.005%

Data Path : Z:\VOASRV\HPCHEM1\MSVOA U\DATA\VU080418\
 Data File : VU025822.D
 Acq On : 03 Aug 2018 16:50
 Operator : MD/SY
 Sample : J4265-15
 Misc : 5.0mL/MSVOA U/WATER
 ALS Vial : 5 Sample Multiplier: 1

Instrument :
 MSVOA_U
 ClientSampleId :
 C0AB3

Integration Parameters: LSCINT.P

Integrator: RTE
 Smoothing : OFF Filtering: 5
 Sampling : 1 Min Area: 0 % of largest Peak
 Start Thrs: 0.2 Max Peaks: 100
 Stop Thrs : 0 Peak Location: TOP

If leading or trailing edge < 100 prefer < Baseline drop else tangent >
 Peak separation: 5

Method : Z:\VOASRV\HPCHEM1\MSVOA_U\METHOD\SOMULM072018WMA.M
 Title : VOC Analysis

72	10.172	2970	2980	2992	rBV3	14198	22097	2.28%	0.259%
73	10.320	3019	3026	3032	rBV7	990	1610	0.17%	0.019%
74	10.387	3044	3047	3049	rBV2	501	266	0.03%	0.003%
75	10.435	3049	3062	3085	rVB	292897	464852	48.02%	5.451%
76	10.857	3184	3193	3203	rVB3	12078	17941	1.85%	0.210%
77	11.104	3260	3270	3283	rVB3	27842	41880	4.33%	0.491%
78	11.326	3330	3339	3356	rVB2	26275	43168	4.46%	0.506%
79	11.487	3377	3389	3401	rBV	508823	805654	83.22%	9.448%
80	11.863	3493	3506	3524	rBV	469569	762911	78.81%	8.947%
81	12.294	3632	3640	3649	rVB2	11913	15802	1.63%	0.185%
82	12.361	3656	3661	3668	rBV4	3241	4516	0.47%	0.053%
83	12.596	3727	3734	3749	rVB4	7992	13503	1.39%	0.158%
84	13.246	3931	3936	3945	rVB4	2682	3108	0.32%	0.036%
85	13.574	4033	4038	4046	rVB7	1796	2740	0.28%	0.032%
86	13.924	4140	4147	4161	rVB5	10117	15502	1.60%	0.182%

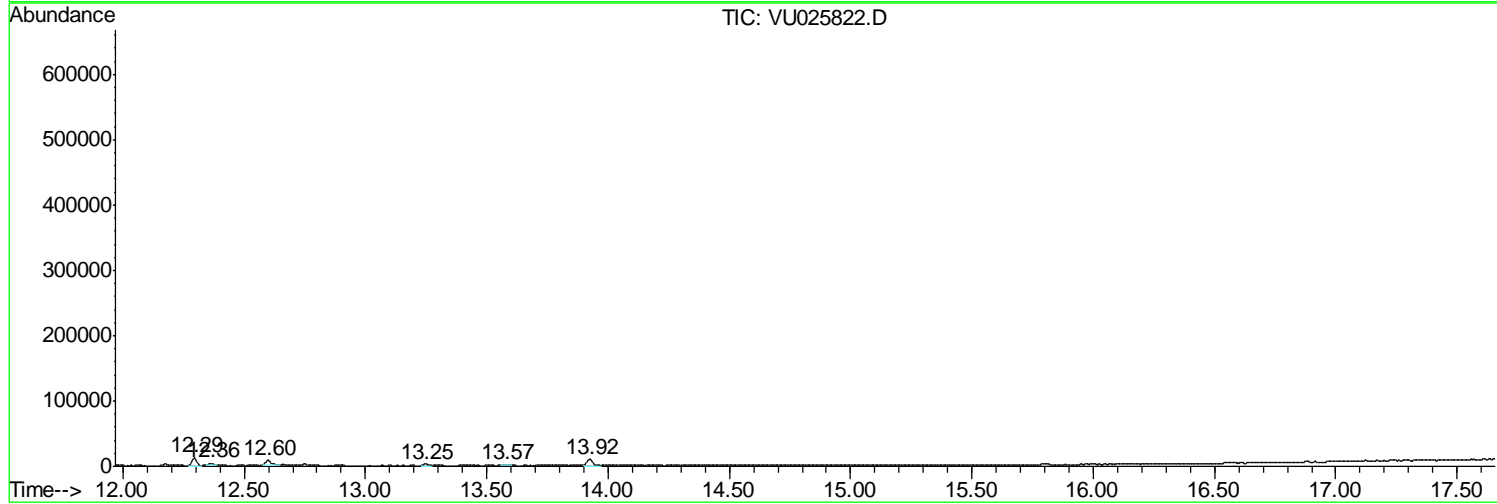
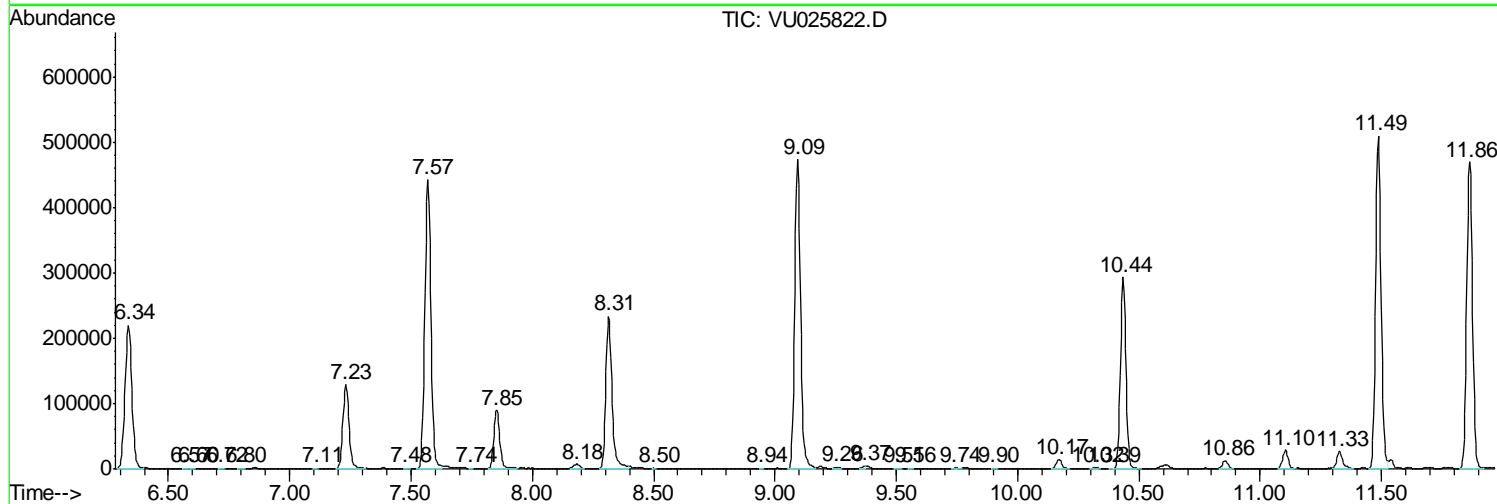
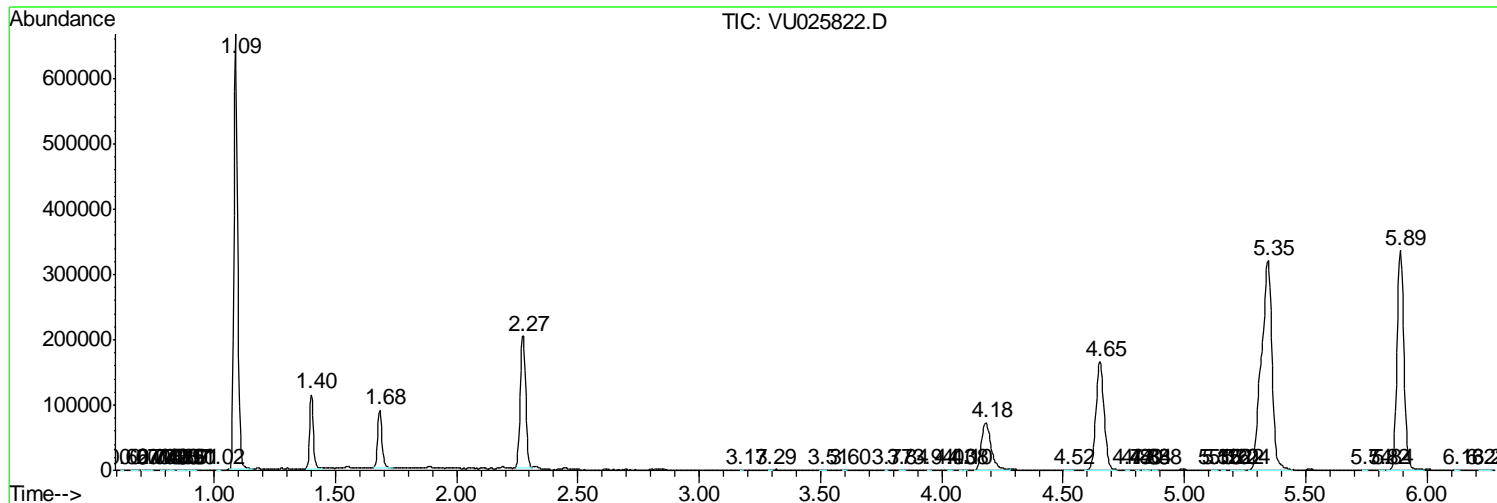
Sum of corrected areas: 8527198

Data Path : Z:\VOASRV\HPCHEM1\MSVOA U\DATA\VU080418\
 Data File : VU025822.D
 Acq On : 03 Aug 2018 16:50
 Operator : MD/SY
 Sample : J4265-15
 Misc : 5.0mL/MSVOA U/WATER
 ALS Vial : 5 Sample Multiplier: 1

Instrument :
 MSVOA_U
Client Sampled :
 C0AB3

Quant Method : Z:\VOASRV\HPCHEM1\MSVOA_U\METHOD\SOMULM072018WMA.M
 Quant Title : VOC Analysis

TIC Library : C:\DATABASE\NIST11.L
 TIC Integration Parameters: LSCINT.P



Data Path : Z:\VOASRV\HPCHEM1\MSVOA U\DATA\VU080418\
 Data File : VU025822.D
 Acq On : 03 Aug 2018 16:50
 Operator : MD/SY
 Sample : J4265-15
 Misc : 5.0mL/MSVOA U/WATER
 ALS Vial : 5 Sample Multiplier: 1

Instrument :
 MSVOA_U
 ClientSampleID :
 C0AB3

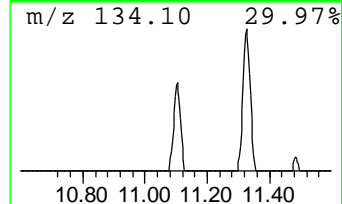
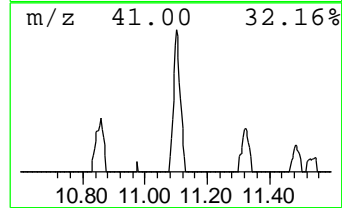
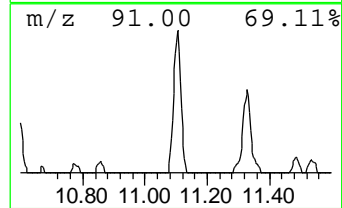
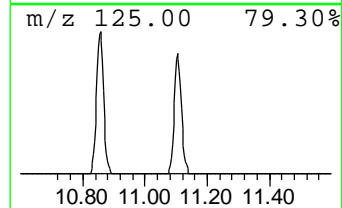
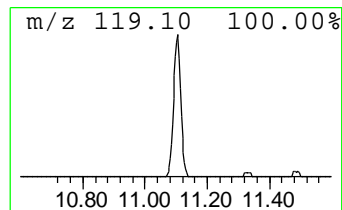
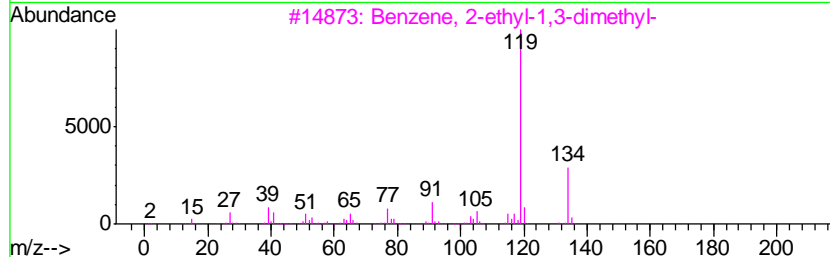
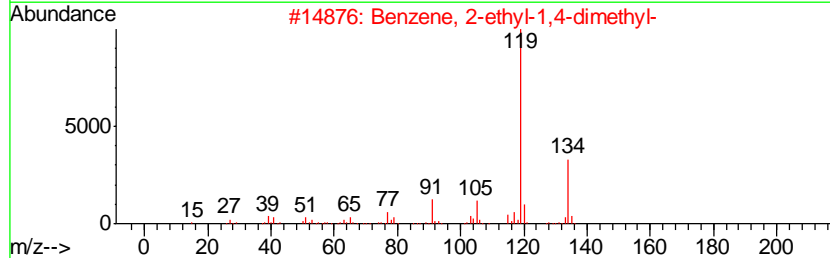
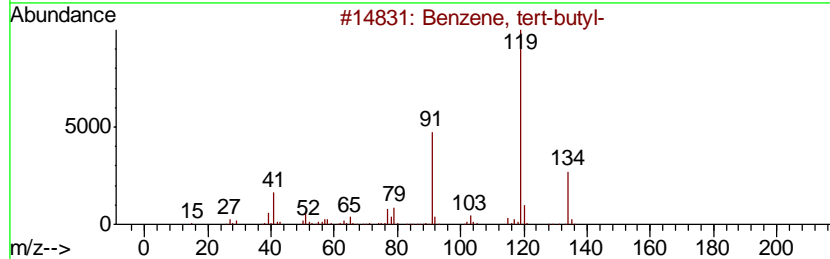
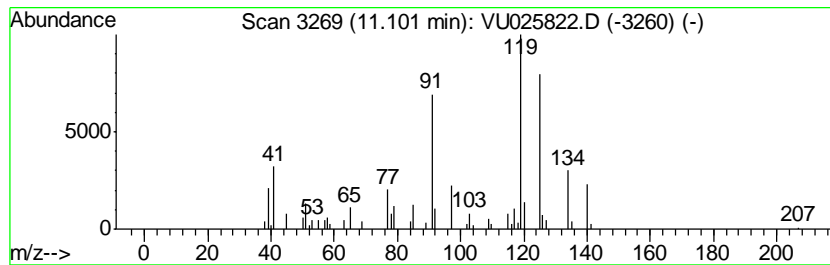
Quant Method : Z:\VOASRV\HPCHEM1\MSVOA_U\METHOD\SOMULM072018WMA.M
 Quant Title : VOC Analysis

TIC Library : C:\DATABASE\NIST11.L
 TIC Integration Parameters: LSCINT.P

 Peak Number 3 Benzene, tert-butyl- Concentration Rank 4

R.T.	EstConc	Area	Relative to ISTD	R.T.
11.10	2.60 ug/L	41880	1,4-Dichlorobenzene-d4	11.49

Hit#	of	Tentative ID	MW	MolForm	CAS#	Qual
1	5	Benzene, tert-butyl-	134	C10H14	000098-06-6	50
2		Benzene, 2-ethyl-1,4-dimethyl-	134	C10H14	001758-88-9	46
3		Benzene, 2-ethyl-1,3-dimethyl-	134	C10H14	002870-04-4	46
4		Benzene, 1,3-diethyl-	134	C10H14	000141-93-5	46
5		Benzene, 1-methyl-3-(1-methyleth...	134	C10H14	000535-77-3	46



Data Path : Z:\VOASRV\HPCHEM1\MSVOA U\DATA\VU080418\
 Data File : VU025822.D
 Acq On : 03 Aug 2018 16:50
 Operator : MD/SY
 Sample : J4265-15
 Misc : 5.0mL/MSVOA U/WATER
 ALS Vial : 5 Sample Multiplier: 1

Instrument :
 MSVOA_U
 ClientSampleID :
 C0AB3

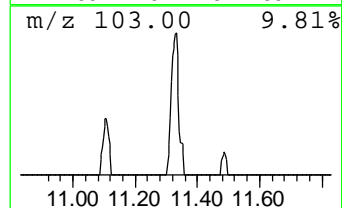
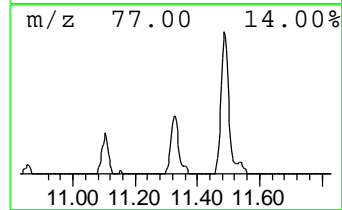
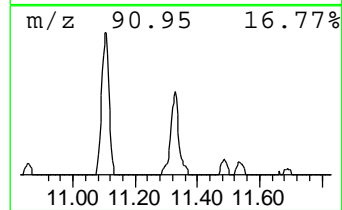
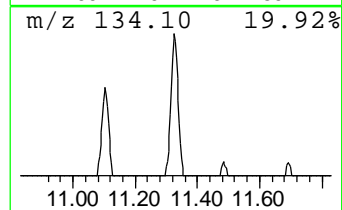
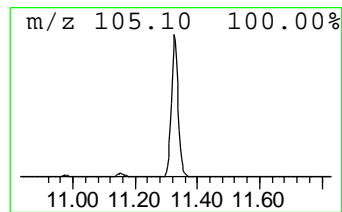
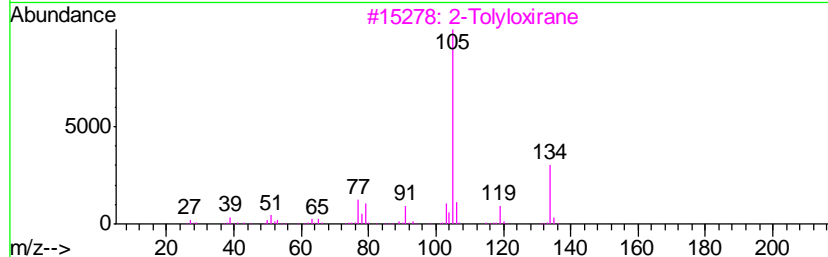
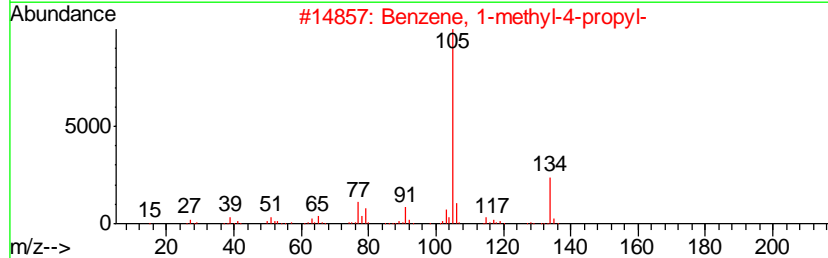
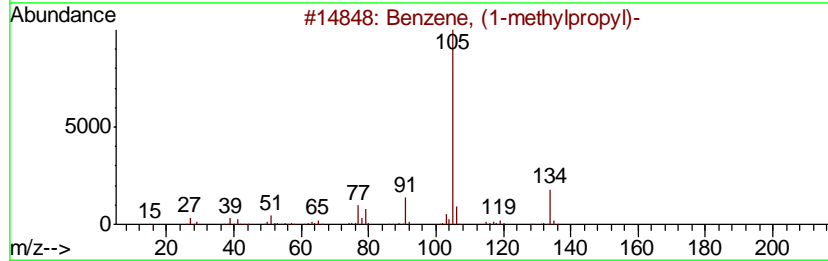
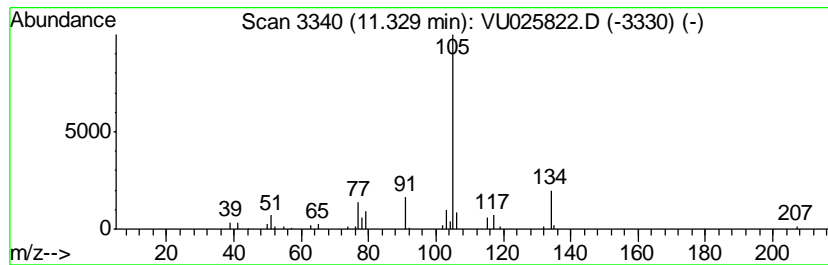
Quant Method : Z:\VOASRV\HPCHEM1\MSVOA_U\METHOD\SOMULM072018WMA.M
 Quant Title : VOC Analysis

TIC Library : C:\DATABASE\NIST11.L
 TIC Integration Parameters: LSCINT.P

 Peak Number 4 Benzene, (1-methylpropyl)- Concentration Rank 3

R.T.	EstConc	Area	Relative to ISTD	R.T.
11.33	2.68 ug/L	43168	1,4-Dichlorobenzene-d4	11.49

Hit#	of	Tentative ID	MW	MolForm	CAS#	Qual
1	5	Benzene, (1-methylpropyl)-	134	C10H14	000135-98-8	91
2		Benzene, 1-methyl-4-propyl-	134	C10H14	001074-55-1	91
3		2-Tolyloxirane	134	C9H10O	002783-26-8	90
4		Benzene, (1-methylpropyl)-	134	C10H14	000135-98-8	90
5		Oxirane, 2-methyl-2-phenyl-	134	C9H10O	002085-88-3	87



Data Path : Z:\VOASRV\HPCHEM1\MSVOA_U\DATA\VU080418\
Data File : VU025822.D
Acq On : 03 Aug 2018 16:50
Operator : MD/SY
Sample : J4265-15
Misc : 5.0mL/MSVOA_U/WATER
ALS Vial : 5 Sample Multiplier: 1

Instrument :
MSVOA_U
ClientSampleId :
C0AB3

Quant Method : Z:\VOASRV\HPCHEM1\MSVOA_U\METHOD\SOMULM072018WMA.M
Quant Title : VOC Analysis

TIC Library : C:\DATABASE\NIST11.L
TIC Integration Parameters: LSCINT.P

TIC Top Hit name	RT	EstConc	Units	Response	--Internal Standard--			
					#	RT	Resp	Conc
Benzene, tert-butyl-	11.10	2.6	ug/L	41880	3	11.49	805654	50.0
Benzene, (1-methy...	11.33	2.7	ug/L	43168	3	11.49	805654	50.0