

Data Path : Z:\VOASRV\HPCHEM1\MSVOA U\DATA\VU080418\  
 Data File : VU025857.D  
 Acq On : 04 Aug 2018 06:27  
 Operator : MD/SY  
 Sample : J4243-01  
 Misc : 5.0mL/MSVOA U/WATER  
 ALS Vial : 40 Sample Multiplier: 1

Instrument :  
 MSVOA\_U  
 ClientSampleId :  
 C0AD3

## Integration Parameters: LSCINT.P

Integrator: RTE  
 Smoothing : OFF  
 Sampling : 1  
 Start Thrs: 0.2  
 Stop Thrs : 0

Filtering: 5  
 Min Area: 0 % of largest Peak  
 Max Peaks: 100  
 Peak Location: TOP

If leading or trailing edge < 100 prefer < Baseline drop else tangent >  
 Peak separation: 5

Method : Z:\VOASRV\HPCHEM1\MSVOA\_U\METHOD\SOMULM072018WMA.M  
 Title : VOC Analysis

Signal : TIC

peak #	R.T. min	first scan	max scan	last scan	PK TY	peak height	corr. area	corr. % max.	% of total
1	0.635	8	14	15	rBV	357	283	0.02%	0.002%
2	1.088	141	155	169	rBV	338115	373604	29.17%	3.280%
3	1.400	245	252	268	rBV	110355	116898	9.13%	1.026%
4	1.551	292	299	306	rBV7	3448	5137	0.40%	0.045%
5	1.683	332	340	356	rVB	89086	112923	8.82%	0.991%
6	2.275	513	524	535	rBV	214242	319941	24.98%	2.809%
7	2.387	557	559	564	rVB2	495	327	0.03%	0.003%
8	2.445	566	577	587	rBV2	4044	7782	0.61%	0.068%
9	2.635	635	636	641	rVB2	594	310	0.02%	0.003%
10	2.670	641	647	651	rBV3	466	498	0.04%	0.004%
11	2.712	651	660	662	rBV5	518	662	0.05%	0.006%
12	2.725	662	664	669	rVB2	441	307	0.02%	0.003%
13	2.828	681	696	709	rBV2	14390	31474	2.46%	0.276%
14	3.002	734	750	766	rBV	97632	214097	16.71%	1.879%
15	3.127	785	789	794	rBV	314	303	0.02%	0.003%
16	3.185	803	807	808	rBV3	494	296	0.02%	0.003%
17	3.256	826	829	834	rVB2	375	297	0.02%	0.003%
18	3.281	834	837	841	rBV	334	337	0.03%	0.003%
19	3.391	868	871	874	rVB3	436	281	0.02%	0.002%
20	3.426	874	882	886	rBV3	645	912	0.07%	0.008%
21	3.494	900	903	909	rBV3	380	489	0.04%	0.004%
22	3.574	909	928	966	rVV	515663	1280897	100.00%	11.244%
23	3.764	985	987	992	rBV3	777	509	0.04%	0.004%
24	3.973	1048	1052	1054	rBV2	556	383	0.03%	0.003%
25	4.053	1071	1077	1081	rVB2	350	402	0.03%	0.004%
26	4.114	1093	1096	1099	rBV2	364	296	0.02%	0.003%
27	4.178	1099	1116	1141	rBV	78849	213778	16.69%	1.877%
28	4.545	1227	1230	1234	rVB3	422	269	0.02%	0.002%
29	4.651	1244	1263	1286	rBV	170841	403345	31.49%	3.541%
30	4.883	1331	1335	1344	rVB4	516	656	0.05%	0.006%
31	5.053	1385	1388	1394	rBV3	302	320	0.02%	0.003%
32	5.088	1394	1399	1401	rBV	326	323	0.03%	0.003%
33	5.259	1449	1452	1455	rBV2	350	249	0.02%	0.002%
34	5.346	1455	1479	1496	rBV2	333228	995071	77.69%	8.735%

Data Path : Z:\VOASRV\HPCHEM1\MSVOA U\DATA\VU080418\  
 Data File : VU025857.D  
 Acq On : 04 Aug 2018 06:27  
 Operator : MD/SY  
 Sample : J4243-01  
 Misc : 5.0mL/MSVOA U/WATER  
 ALS Vial : 40 Sample Multiplier: 1

Instrument :  
 MSVOA\_U  
 ClientSampleId :  
 C0AD3

## Integration Parameters: LSCINT.P

Integrator: RTE  
 Smoothing : OFF  
 Sampling : 1  
 Start Thrs: 0.2  
 Stop Thrs : 0

Filtering: 5  
 Min Area: 0 % of largest Peak  
 Max Peaks: 100  
 Peak Location: TOP

If leading or trailing edge < 100 prefer < Baseline drop else tangent >  
 Peak separation: 5

Method : Z:\VOASRV\HPCHEM1\MSVOA\_U\METHOD\SOMULM072018WMA.M  
 Title : VOC Analysis

35	5.580	1534	1552	1574	rVB3	49400	114350	8.93%	1.004%
36	5.796	1606	1619	1633	rBV3	2926	6309	0.49%	0.055%
37	5.889	1633	1648	1672	rBV	385650	767005	59.88%	6.733%
38	6.130	1718	1723	1726	rBV3	344	295	0.02%	0.003%
39	6.172	1729	1736	1744	rVB6	2144	3467	0.27%	0.030%
40	6.210	1744	1748	1749	rBV	386	298	0.02%	0.003%
41	6.239	1749	1757	1758	rBV4	2258	2538	0.20%	0.022%
42	6.336	1770	1787	1803	rBV	226652	452522	35.33%	3.972%
43	6.506	1838	1840	1845	rVB2	372	307	0.02%	0.003%
44	6.535	1845	1849	1850	rBV	429	278	0.02%	0.002%
45	6.583	1858	1864	1869	rBV3	1237	1744	0.14%	0.015%
46	6.828	1926	1940	1961	rVB3	12431	27471	2.14%	0.241%
47	6.924	1961	1970	1971	rBV3	711	808	0.06%	0.007%
48	6.944	1971	1976	1977	rBV4	1048	908	0.07%	0.008%
49	7.001	1987	1994	1995	rBV4	1773	1816	0.14%	0.016%
50	7.230	2053	2065	2078	rBV	122731	217281	16.96%	1.907%
51	7.297	2079	2086	2099	rVB3	16667	30551	2.39%	0.268%
52	7.378	2100	2111	2113	rBV3	6394	10005	0.78%	0.088%
53	7.461	2132	2137	2144	rBV6	1374	2457	0.19%	0.022%
54	7.567	2158	2170	2193	rVB	460303	806203	62.94%	7.077%
55	7.712	2208	2215	2227	rVB5	5510	9869	0.77%	0.087%
56	7.853	2247	2259	2272	rBV	86442	146566	11.44%	1.287%
57	8.001	2302	2305	2308	rVB3	672	436	0.03%	0.004%
58	8.040	2309	2317	2319	rBV4	1666	2139	0.17%	0.019%
59	8.098	2330	2335	2337	rBV3	1488	1515	0.12%	0.013%
60	8.165	2346	2356	2369	rBV3	15871	28984	2.26%	0.254%
61	8.233	2370	2377	2390	rVB7	5335	9156	0.71%	0.080%
62	8.313	2390	2402	2419	rBV	285350	508321	39.68%	4.462%
63	8.554	2472	2477	2480	rBV4	1008	1188	0.09%	0.010%
64	8.587	2482	2487	2494	rVV4	3667	4914	0.38%	0.043%
65	8.783	2538	2548	2560	rVB2	29682	51395	4.01%	0.451%
66	8.886	2574	2580	2590	rVB8	2827	4157	0.32%	0.036%
67	8.953	2590	2601	2612	rBV	23450	39414	3.08%	0.346%
68	9.024	2613	2623	2632	rBV7	12489	26327	2.06%	0.231%
69	9.091	2633	2644	2664	rVV	555697	935305	73.02%	8.210%
70	9.255	2688	2695	2704	rBV2	14836	28119	2.20%	0.247%
71	9.374	2725	2732	2734	rBV4	4067	4466	0.35%	0.039%

Data Path : Z:\VOASRV\HPCHEM1\MSVOA U\DATA\VU080418\  
 Data File : VU025857.D  
 Acq On : 04 Aug 2018 06:27  
 Operator : MD/SY  
 Sample : J4243-01  
 Misc : 5.0mL/MSVOA U/WATER  
 ALS Vial : 40 Sample Multiplier: 1

Instrument :  
 MSVOA\_U  
 ClientSampleId :  
 C0AD3

## Integration Parameters: LSCINT.P

Integrator: RTE  
 Smoothing : OFF  
 Sampling : 1  
 Start Thrs: 0.2  
 Stop Thrs : 0

Filtering: 5  
 Min Area: 0 % of largest Peak  
 Max Peaks: 100  
 Peak Location: TOP

If leading or trailing edge < 100 prefer < Baseline drop else tangent >  
 Peak separation: 5

Method : Z:\VOASRV\HPCHEM1\MSVOA\_U\METHOD\SOMULM072018WMA.M  
 Title : VOC Analysis

72	9.445	2744	2754	2765	rBV3	9870	19502	1.52%	0.171%
73	9.500	2766	2771	2782	rVB5	5619	8851	0.69%	0.078%
74	9.596	2791	2801	2809	rBV8	4458	9358	0.73%	0.082%
75	9.702	2832	2834	2836	rBV2	470	265	0.02%	0.002%
76	9.779	2845	2858	2869	rBV3	34627	62722	4.90%	0.551%
77	9.898	2892	2895	2896	rBV2	877	489	0.04%	0.004%
78	9.947	2900	2910	2922	rVV3	13927	27651	2.16%	0.243%
79	10.014	2925	2931	2941	rVV6	8898	17894	1.40%	0.157%
80	10.078	2944	2951	2961	rVB5	16368	28325	2.21%	0.249%
81	10.140	2961	2970	2974	rBV6	2798	5601	0.44%	0.049%
82	10.223	2988	2996	3007	rVB4	9808	17758	1.39%	0.156%
83	10.313	3012	3024	3032	rBV5	6502	14230	1.11%	0.125%
84	10.435	3052	3062	3075	rVB	308760	508198	39.68%	4.461%
85	10.545	3089	3096	3101	rBV6	4890	7748	0.60%	0.068%
86	10.689	3133	3141	3152	rBV3	19934	31385	2.45%	0.276%
87	10.776	3161	3168	3185	rVB	25127	41492	3.24%	0.364%
88	10.844	3186	3189	3191	rBV3	995	755	0.06%	0.007%
89	10.882	3197	3201	3210	rBV8	2986	4557	0.36%	0.040%
90	10.972	3222	3229	3238	rBV	20701	30596	2.39%	0.269%
91	11.043	3245	3251	3258	rBV3	20075	31619	2.47%	0.278%
92	11.088	3259	3265	3278	rVB3	36863	61263	4.78%	0.538%
93	11.210	3297	3303	3314	rVB3	15333	23664	1.85%	0.208%
94	11.316	3326	3336	3355	rBV7	32982	74972	5.85%	0.658%
95	11.487	3377	3389	3406	rBV	612009	995562	77.72%	8.739%
96	11.574	3407	3416	3424	rBV	80315	122777	9.59%	1.078%
97	11.863	3494	3506	3524	rVV	510316	829221	64.74%	7.279%
98	11.943	3526	3531	3540	rVB3	15640	22188	1.73%	0.195%
99	12.123	3581	3587	3599	rVB3	9420	16731	1.31%	0.147%
100	12.837	3801	3809	3818	rBV5	22965	43809	3.42%	0.385%

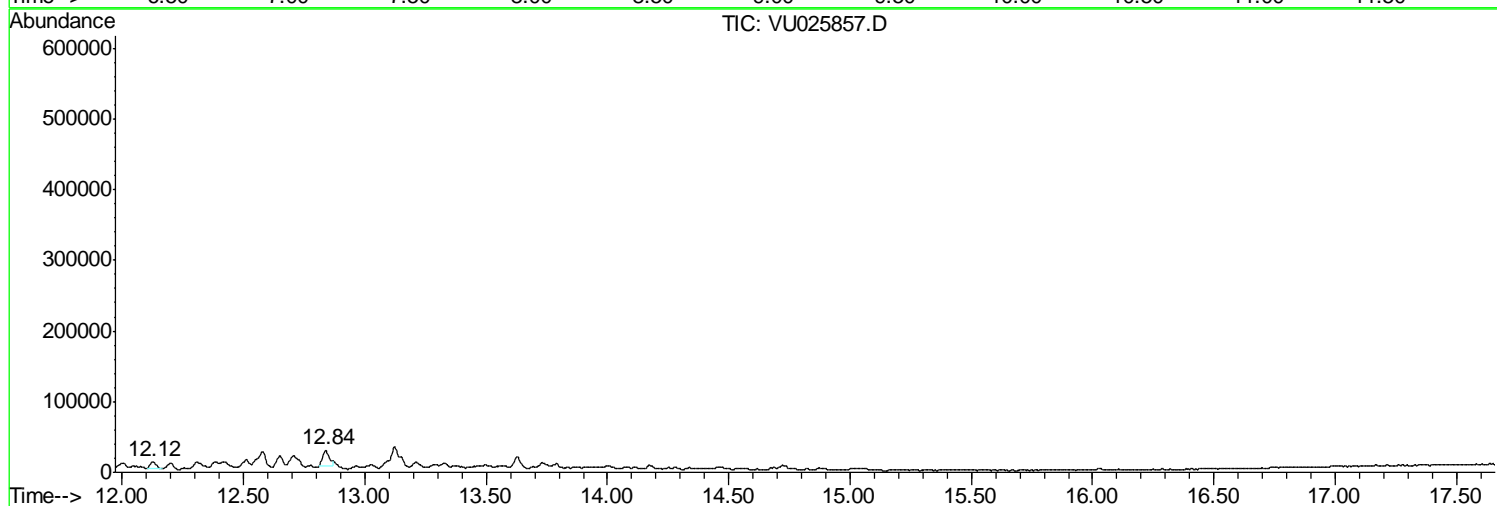
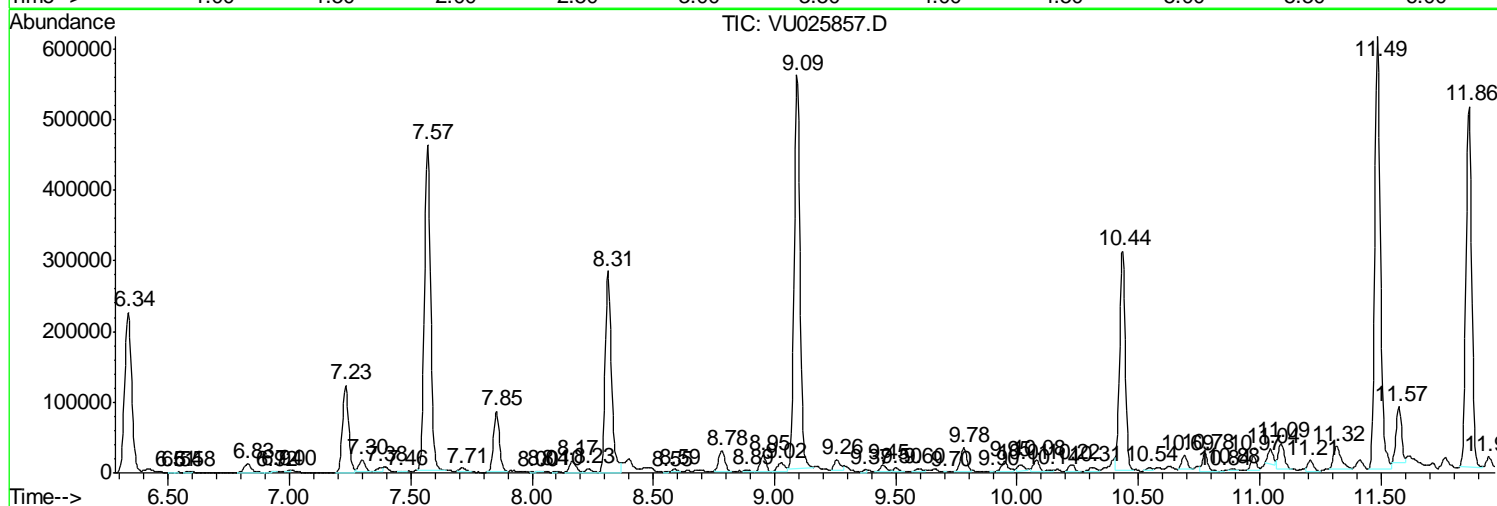
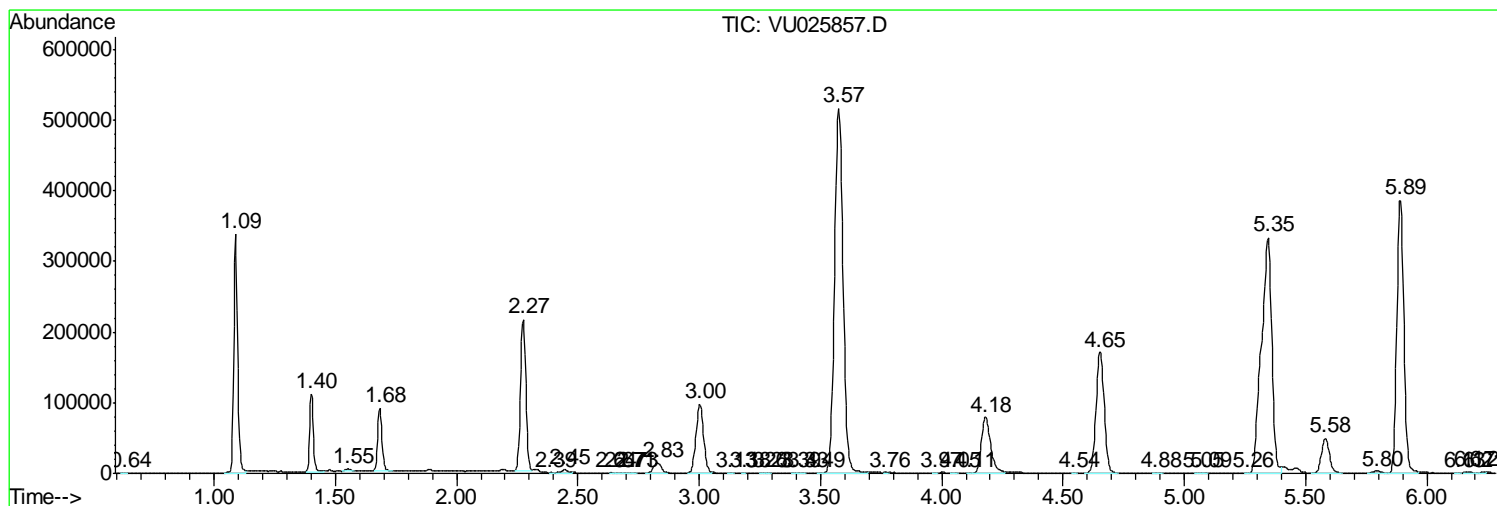
Sum of corrected areas: 11391723

Data Path : Z:\VOASRV\HPCHEM1\MSVOA U\DATA\VU080418\  
 Data File : VU025857.D  
 Acq On : 04 Aug 2018 06:27  
 Operator : MD/SY  
 Sample : J4243-01  
 Misc : 5.0mL/MSVOA U/WATER  
 ALS Vial : 40 Sample Multiplier: 1

**Instrument :**  
 MSVOA\_U  
**Client Sampled :**  
 C0AD3

Quant Method : Z:\VOASRV\HPCHEM1\MSVOA\_U\METHOD\SOMULM072018WMA.M  
 Quant Title : VOC Analysis

TIC Library : C:\DATABASE\NIST11.L  
 TIC Integration Parameters: LSCINT.P



Data Path : Z:\VOASRV\HPCHEM1\MSVOA U\DATA\VU080418\  
 Data File : VU025857.D  
 Acq On : 04 Aug 2018 06:27  
 Operator : MD/SY  
 Sample : J4243-01  
 Misc : 5.0mL/MSVOA U/WATER  
 ALS Vial : 40 Sample Multiplier: 1

Instrument :  
 MSVOA\_U  
 ClientSampleID :  
 C0AD3

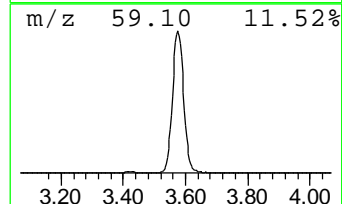
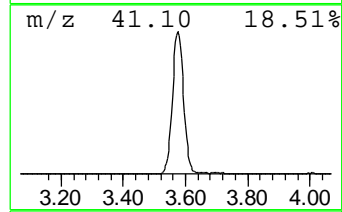
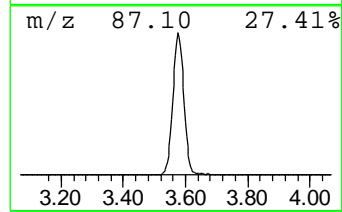
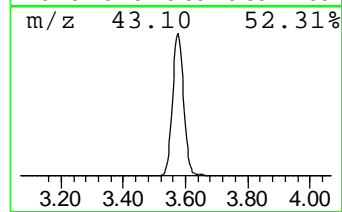
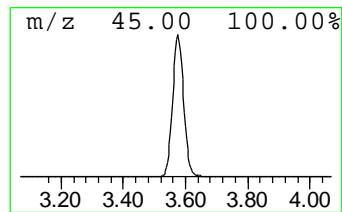
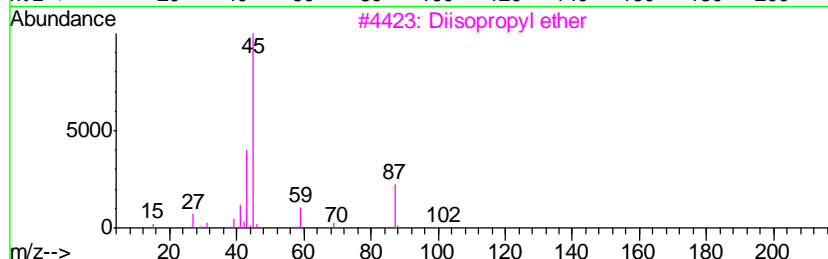
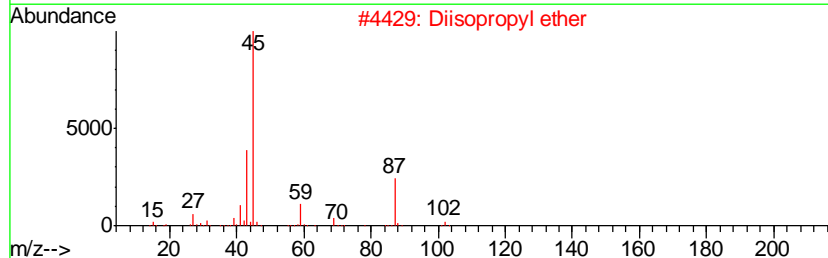
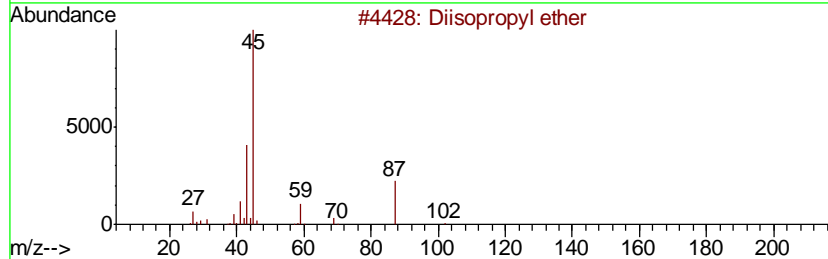
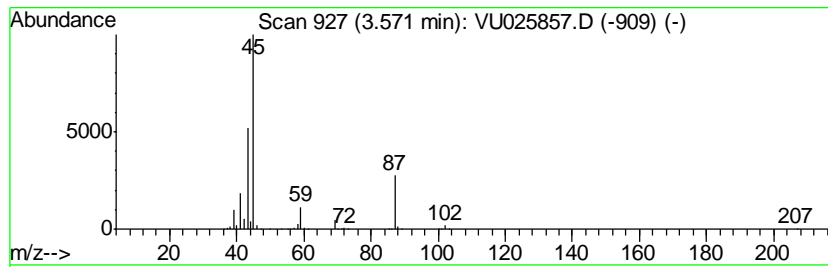
Quant Method : Z:\VOASRV\HPCHEM1\MSVOA\_U\METHOD\SOMULM072018WMA.M  
 Quant Title : VOC Analysis

TIC Library : C:\DATABASE\NIST11.L  
 TIC Integration Parameters: LSCINT.P

\*\*\*\*\*  
 Peak Number 2 Diisopropyl ether Concentration Rank 1

R.T.	EstConc	Area	Relative to ISTD	R.T.
3.57	83.50 ug/L	1280900	1,4-Difluorobenzene	5.89

Hit#	of	Tentative ID	MW	MolForm	CAS#	Qual
1	5	Diisopropyl ether	102	C6H14O	000108-20-3	83
2		Diisopropyl ether	102	C6H14O	000108-20-3	78
3		Diisopropyl ether	102	C6H14O	000108-20-3	74
4		Ether, 2-chloro-1-methylethyl is...	136	C6H13ClO	098277-76-0	64
5		1-Propanol, 2-(1-methylethoxy)-	118	C6H14O2	003944-37-4	56



Data Path : Z:\VOASRV\HPCHEM1\MSVOA U\DATA\VU080418\  
 Data File : VU025857.D  
 Acq On : 04 Aug 2018 06:27  
 Operator : MD/SY  
 Sample : J4243-01  
 Misc : 5.0mL/MSVOA U/WATER  
 ALS Vial : 40 Sample Multiplier: 1

Instrument :  
 MSVOA\_U  
 ClientSampled :  
 C0AD3

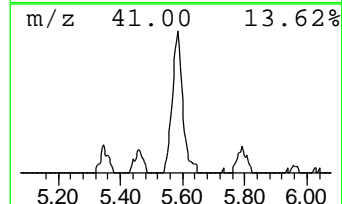
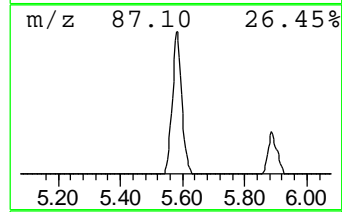
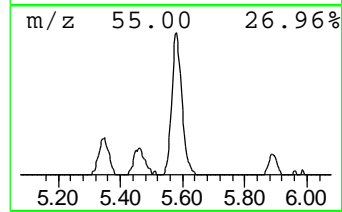
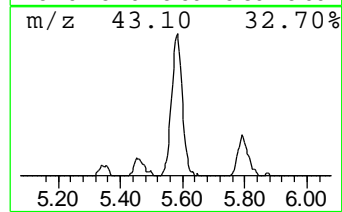
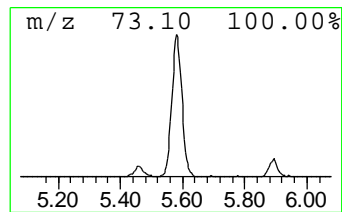
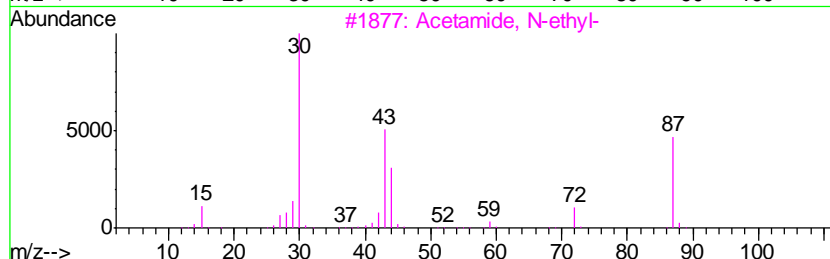
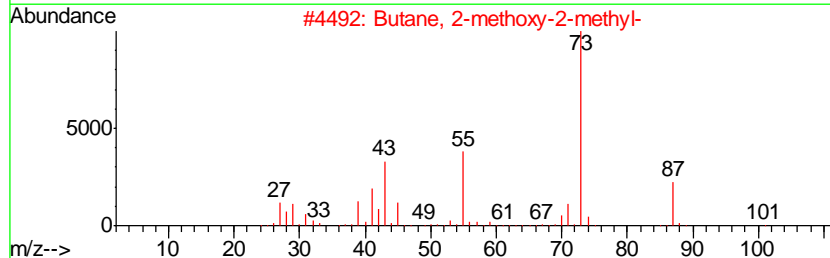
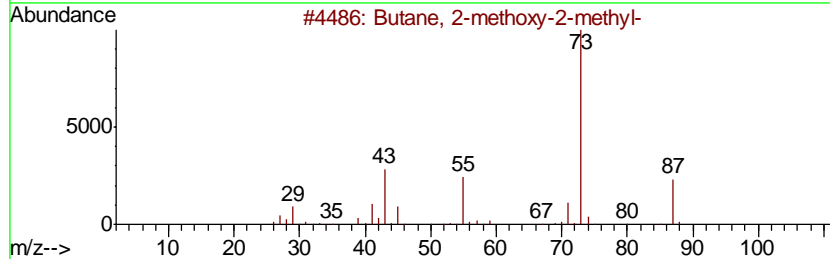
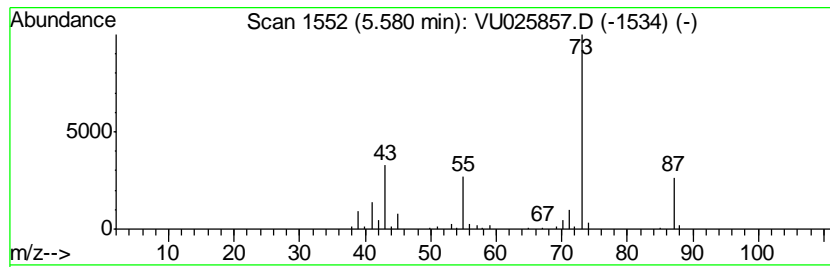
Quant Method : Z:\VOASRV\HPCHEM1\MSVOA\_U\METHOD\SOMULM072018WMA.M  
 Quant Title : VOC Analysis

TIC Library : C:\DATABASE\NIST11.L  
 TIC Integration Parameters: LSCINT.P

\*\*\*\*\*  
 Peak Number 3 Butane, 2-methoxy-2-methyl- Concentration Rank 4

R.T.	EstConc	Area	Relative to ISTD	R.T.
5.58	7.45 ug/L	114350	1,4-Difluorobenzene	5.89

Hit#	of	Tentative ID	MW	MolForm	CAS#	Qual
1	5	Butane, 2-methoxy-2-methyl-	102	C6H14O	000994-05-8	78
2		Butane, 2-methoxy-2-methyl-	102	C6H14O	000994-05-8	50
3		Acetamide, N-ethyl-	87	C4H9NO	000625-50-3	12
4		Acetamide, N-ethyl-	87	C4H9NO	000625-50-3	9
5		Borane, dimethoxy-	74	C2H7BO2	004542-61-4	9



Data Path : Z:\VOASRV\HPCHEM1\MSVOA U\DATA\VU080418\  
 Data File : VU025857.D  
 Acq On : 04 Aug 2018 06:27  
 Operator : MD/SY  
 Sample : J4243-01  
 Misc : 5.0mL/MSVOA U/WATER  
 ALS Vial : 40 Sample Multiplier: 1

Instrument :  
 MSVOA\_U  
 ClientSampled :  
 C0AD3

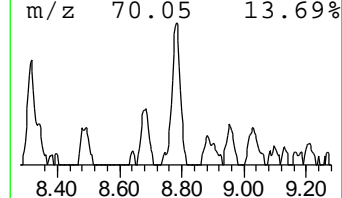
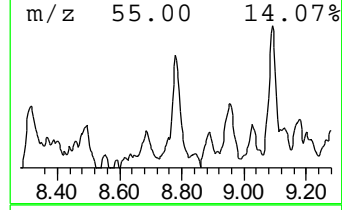
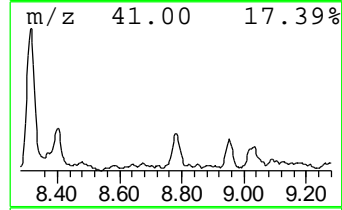
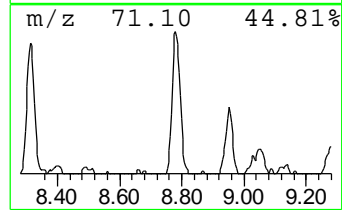
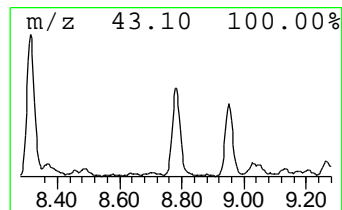
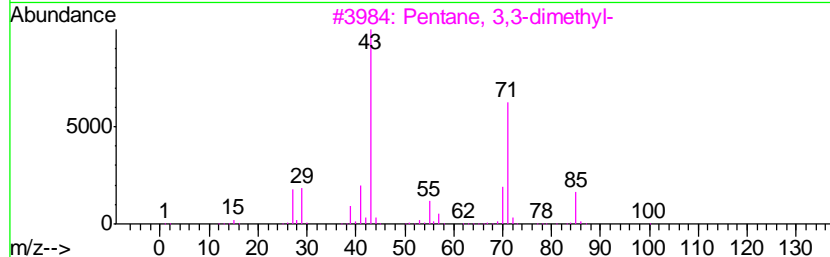
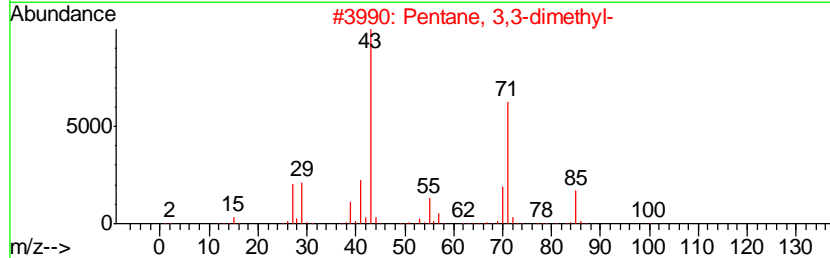
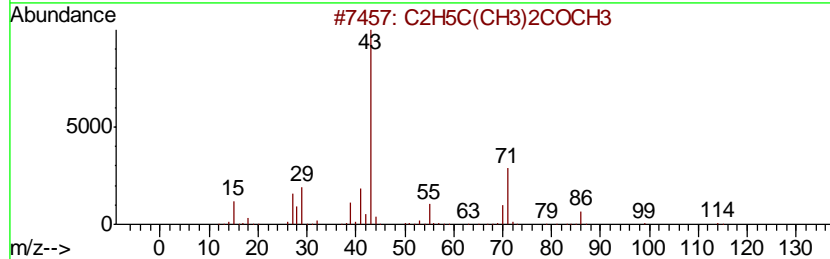
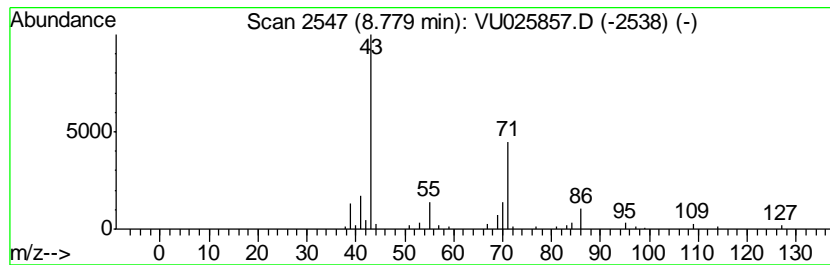
Quant Method : Z:\VOASRV\HPCHEM1\MSVOA\_U\METHOD\SOMULM072018WMA.M  
 Quant Title : VOC Analysis

TIC Library : C:\DATABASE\NIST11.L  
 TIC Integration Parameters: LSCINT.P

\*\*\*\*\*  
 Peak Number 5 C2H5C(CH3)2COCH3 Concentration Rank 8

R.T.	EstConc	Area	Relative to ISTD	R.T.
8.78	2.75 ug/L	51395	Chlorobenzene-d5	9.09

Hit#	of	Tentative ID	MW	MolForm	CAS#	Qual
1	5	C2H5C(CH3)2COCH3	114	C7H14O	020669-04-9	64
2		Pentane, 3,3-dimethyl-	100	C7H16	000562-49-2	42
3		Pentane, 3,3-dimethyl-	100	C7H16	000562-49-2	42
4		1-Hexene, 4,5-dimethyl-	112	C8H16	016106-59-5	40
5		1-Hexene, 3,4,5-trimethyl-	126	C9H18	056728-10-0	38



Data Path : Z:\VOASRV\HPCHEM1\MSVOA U\DATA\VU080418\  
 Data File : VU025857.D  
 Acq On : 04 Aug 2018 06:27  
 Operator : MD/SY  
 Sample : J4243-01  
 Misc : 5.0mL/MSVOA U/WATER  
 ALS Vial : 40 Sample Multiplier: 1

Instrument :  
 MSVOA\_U  
 ClientSampleID :  
 C0AD3

Quant Method : Z:\VOASRV\HPCHEM1\MSVOA\_U\METHOD\SOMULM072018WMA.M  
 Quant Title : VOC Analysis

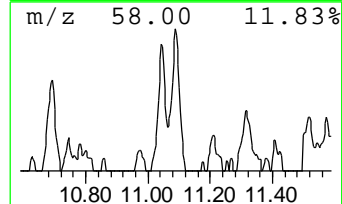
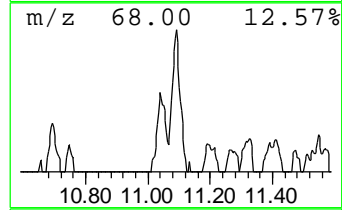
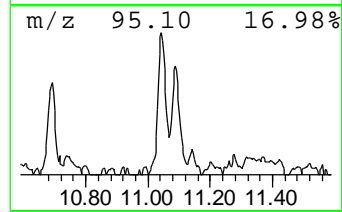
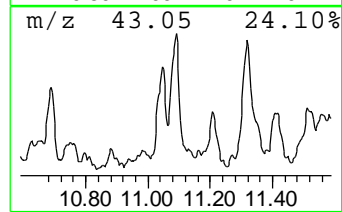
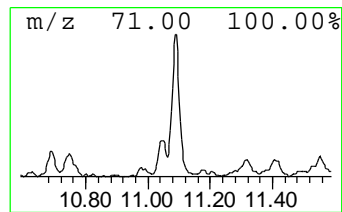
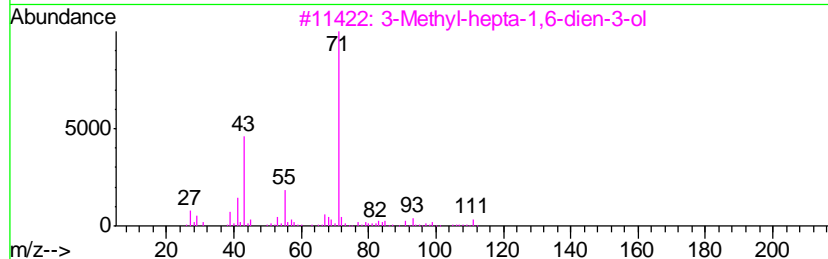
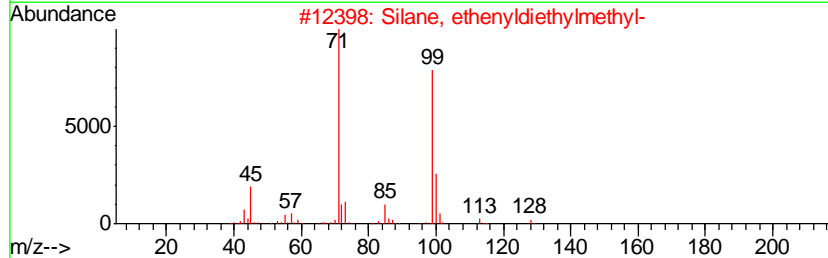
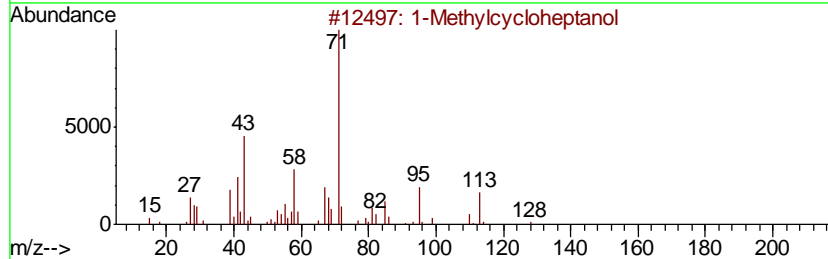
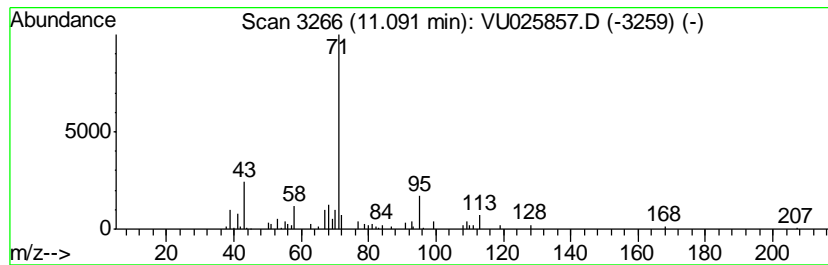
TIC Library : C:\DATABASE\NIST11.L  
 TIC Integration Parameters: LSCINT.P

\*\*\*\*\*  
 Peak Number 6 1-Methylcycloheptanol Concentration Rank 7

R.T.	EstConc	Area	Relative to ISTD	R.T.
11.09	3.08 ug/L	61263	1,4-Dichlorobenzene-d4	11.49

Hit#	of	Tentative ID	MW	MolForm	CAS#	Qual
1	5	1-Methylcycloheptanol	128	C8H16O	003761-94-2	50
2		Silane, ethenyldiethylmethyl-	128	C7H16Si	018292-29-0	47
3		3-Methyl-hepta-1,6-dien-3-ol	126	C8H14O	034780-69-3	42
4		Isophytol	296	C20H40O	000505-32-8	40
5		trans-2-Decen-1-ol, methyl ether	170	C11H22O	1000352-66-3	40





Data Path : Z:\VOASRV\HPCHEM1\MSVOA U\DATA\VU080418\  
 Data File : VU025857.D  
 Acq On : 04 Aug 2018 06:27  
 Operator : MD/SY  
 Sample : J4243-01  
 Misc : 5.0mL/MSVOA U/WATER  
 ALS Vial : 40 Sample Multiplier: 1

Instrument :  
 MSVOA\_U  
 ClientSampleID :  
 C0AD3

Quant Method : Z:\VOASRV\HPCHEM1\MSVOA\_U\METHOD\SOMULM072018WMA.M  
 Quant Title : VOC Analysis

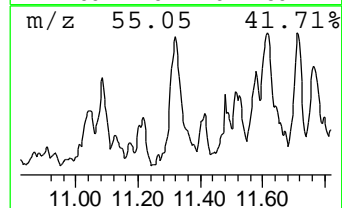
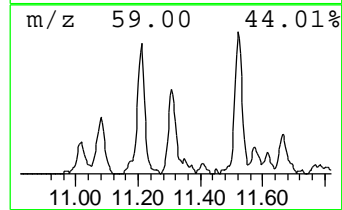
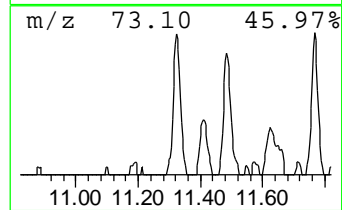
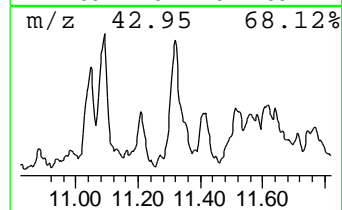
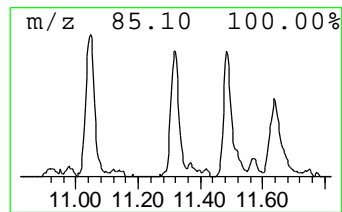
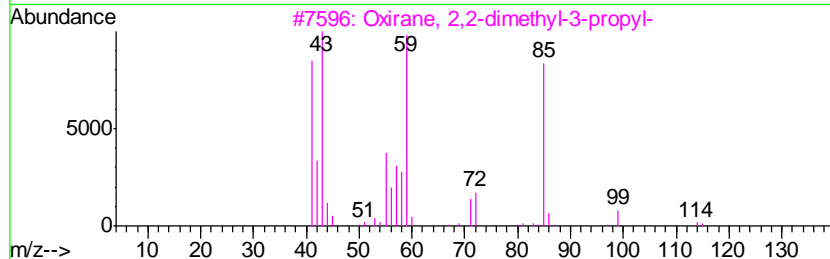
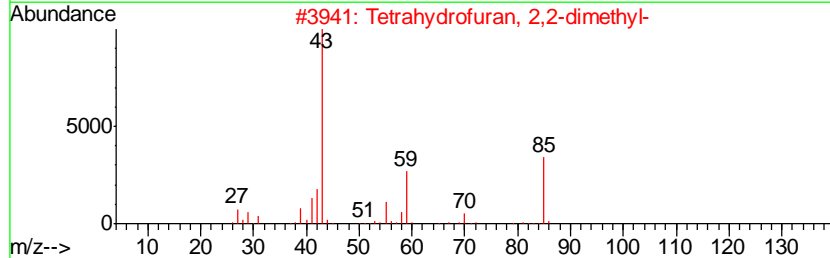
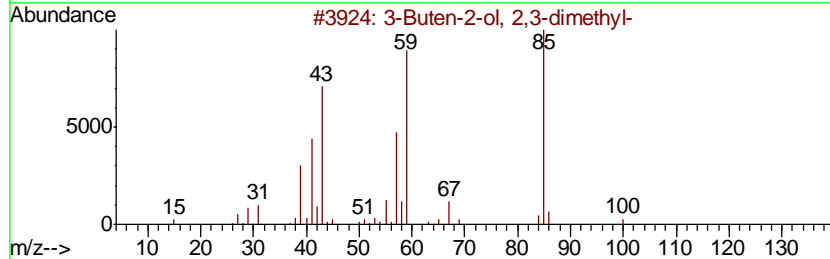
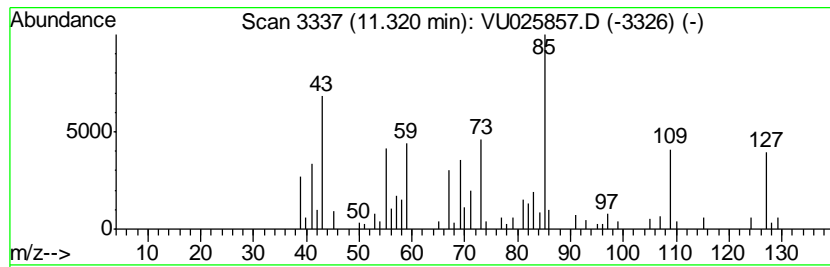
TIC Library : C:\DATABASE\NIST11.L  
 TIC Integration Parameters: LSCINT.P

\*\*\*\*\*  
 Peak Number 7 unknown-01 Concentration Rank 6

R.T.	EstConc	Area	Relative to ISTD	R.T.
11.32	3.77 ug/L	74972	1,4-Dichlorobenzene-d4	11.49

Hit#	of	Tentative ID	MW	MolForm	CAS#	Qual
1	5	3-Buten-2-ol, 2,3-dimethyl-	100	C6H12O	010473-13-9	38
2		Tetrahydrofuran, 2,2-dimethyl-	100	C6H12O	001003-17-4	38
3		Oxirane, 2,2-dimethyl-3-propyl-	114	C7H14O	017612-35-0	37
4		1-Pentanol, 2,2-dimethyl-	116	C7H16O	002370-12-9	27
5		2H-Pyran, 2-(bromomethyl)tetrahy...	178	C6H11BrO	034723-82-5	27



Data Path : Z:\VOASRV\HPCHEM1\MSVOA U\DATA\VU080418\  
 Data File : VU025857.D  
 Acq On : 04 Aug 2018 06:27  
 Operator : MD/SY  
 Sample : J4243-01  
 Misc : 5.0mL/MSVOA U/WATER  
 ALS Vial : 40 Sample Multiplier: 1

Instrument :  
 MSVOA\_U  
 ClientSampleID :  
 C0AD3

Quant Method : Z:\VOASRV\HPCHEM1\MSVOA\_U\METHOD\SOMULM072018WMA.M  
 Quant Title : VOC Analysis

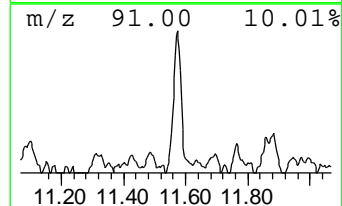
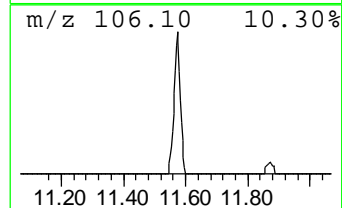
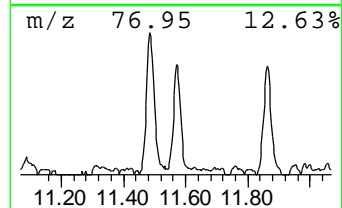
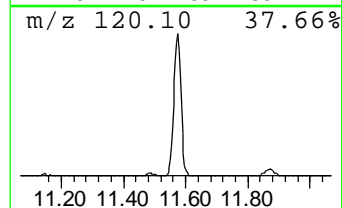
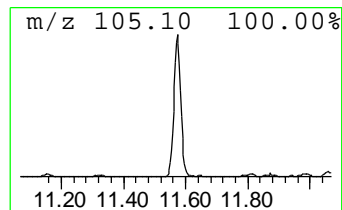
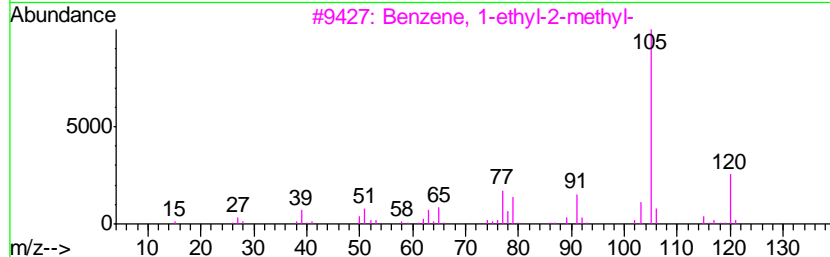
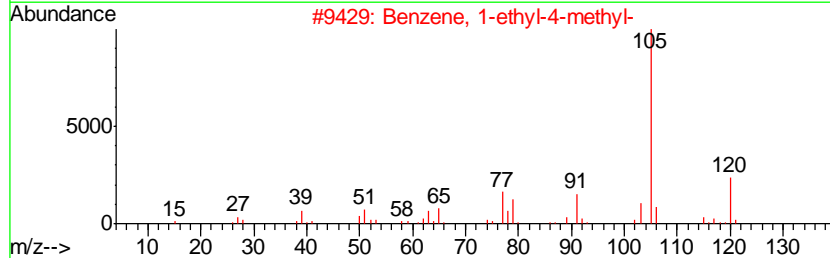
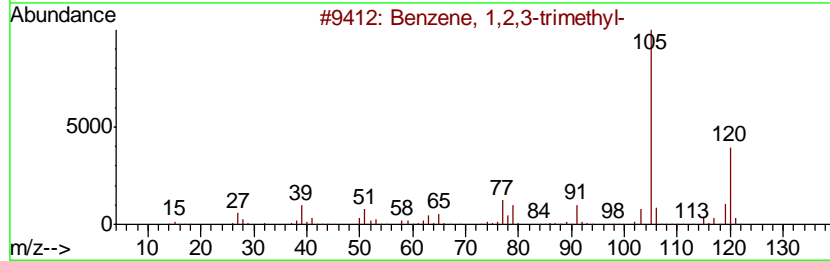
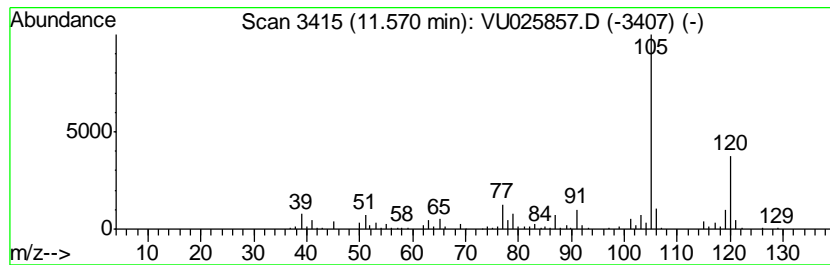
TIC Library : C:\DATABASE\NIST11.L  
 TIC Integration Parameters: LSCINT.P

\*\*\*\*\*  
 Peak Number 8 Benzene, 1,2,3-trimethyl- Concentration Rank 5

R.T.	EstConc	Area	Relative to ISTD	R.T.
11.57	6.17 ug/L	122777	1,4-Dichlorobenzene-d4	11.49

Hit#	of	Tentative ID	MW	MolForm	CAS#	Qual
1	5	Benzene, 1,2,3-trimethyl-	120	C9H12	000526-73-8	95
2		Benzene, 1-ethyl-4-methyl-	120	C9H12	000622-96-8	93
3		Benzene, 1-ethyl-2-methyl-	120	C9H12	000611-14-3	93
4		Benzene, 1,2,4-trimethyl-	120	C9H12	000095-63-6	91
5		Mesitylene	120	C9H12	000108-67-8	87



Data Path : Z:\VOASRV\HPCHEM1\MSVOA\_U\DATA\VU080418\  
Data File : VU025857.D  
Acq On : 04 Aug 2018 06:27  
Operator : MD/SY  
Sample : J4243-01  
Misc : 5.0mL/MSVOA\_U/WATER  
ALS Vial : 40 Sample Multiplier: 1

Instrument :  
MSVOA\_U  
ClientSampleId :  
C0AD3

Quant Method : Z:\VOASRV\HPCHEM1\MSVOA\_U\METHOD\SOMULM072018WMA.M  
Quant Title : VOC Analysis

TIC Library : C:\DATABASE\NIST11.L  
TIC Integration Parameters: LSCINT.P

TIC Top Hit name	RT	EstConc	Units	Response	--Internal Standard--			
					#	RT	Resp	Conc
Diisopropyl ether	3.57	83.5	ug/L	1280900	1	5.89	767005	50.0
Butane, 2-methoxy...	5.58	7.5	ug/L	114350	1	5.89	767005	50.0
C2H5C(CH3)2COCH3	8.78	2.8	ug/L	51395	2	9.09	935305	50.0
1-Methylcyclohept...	11.09	3.1	ug/L	61263	3	11.49	995562	50.0
unknown-01	11.32	3.8	ug/L	74972	3	11.49	995562	50.0
Benzene, 1,2,3-tr...	11.57	6.2	ug/L	122777	3	11.49	995562	50.0