

Data Path : Z:\voasrv\HPCHEM1\MSVOA_U\Data\VU080422\
 Data File : VU050065.D
 Acq On : 04 Aug 2022 16:22
 Operator : SY/MD
 Sample : N4027-10
 Misc : 25.0mL/MSVOA_U/WATER
 ALS Vial : 12 Sample Multiplier: 1

Instrument :
 MSVOA_U
 ClientSampleId :
 GBJH4

Quant Time: Aug 05 04:53:22 2022
 Quant Method : Z:\voasrv\HPCHEM1\MSVOA_U\Method\SFAMUTR080422WMA.M
 Quant Title : TRACE VOA SFAM1.0
 QLast Update : Fri Aug 05 04:52:21 2022
 Response via : Initial Calibration

Compound	R.T.	QIon	Response	Conc	Units	Dev(Min)
Internal Standards						
1) 1,4-Difluorobenzene	6.250	114	98058	5.000	ug/L	0.00
28) Chlorobenzene-d5	9.417	117	95903	5.000	ug/L	0.00
58) 1,4-Dichlorobenzene-d4	11.816	152	44148	5.000	ug/L	0.00
System Monitoring Compounds						
4) Vinyl Chloride-d3	1.597	65	38924	4.770	ug/L	0.00
Spiked Amount	5.000	Range 40 - 130	Recovery	=	95.400%	
7) Chloroethane-d5	1.912	69	31242	4.745	ug/L	0.00
Spiked Amount	5.000	Range 65 - 130	Recovery	=	95.000%	
11) 1,1-Dichloroethene-d2	2.562	65	14825	4.648	ug/L	0.00
Spiked Amount	5.000	Range 60 - 125	Recovery	=	93.000%	
20) 2-Butanone-d5	4.649	46	108693	54.619	ug/L	0.00
Spiked Amount	50.000	Range 40 - 130	Recovery	=	109.240%	
24) Chloroform-d	5.063	84	72012	4.744	ug/L	0.00
Spiked Amount	5.000	Range 70 - 125	Recovery	=	94.800%	
26) 1,2-Dichloroethane-d4	5.703	65	36931	4.739	ug/L	0.00
Spiked Amount	5.000	Range 70 - 130	Recovery	=	94.800%	
32) Benzene-d6	5.726	84	137923	4.609	ug/L	0.00
Spiked Amount	5.000	Range 70 - 125	Recovery	=	92.200%	
36) 1,2-Dichloropropane-d6	6.694	67	47100	4.779	ug/L	0.00
Spiked Amount	5.000	Range 60 - 140	Recovery	=	95.600%	
41) Toluene-d8	7.899	98	113390	4.290	ug/L	0.00
Spiked Amount	5.000	Range 70 - 130	Recovery	=	85.800%	
43) trans-1,3-Dichloroprop...	8.182	79	16762	4.746	ug/L	0.00
Spiked Amount	5.000	Range 55 - 130	Recovery	=	95.000%	
46) 2-Hexanone-d5	8.642	63	60494	48.303	ug/L	0.00
Spiked Amount	50.000	Range 45 - 130	Recovery	=	96.600%	
56) 1,1,2,2-Tetrachloroeth...	10.758	84	42141	4.869	ug/L	0.00
Spiked Amount	5.000	Range 65 - 120	Recovery	=	97.400%	
66) 1,2-Dichlorobenzene-d4	12.195	152	40741	4.710	ug/L	0.00
Spiked Amount	5.000	Range 80 - 120	Recovery	=	94.200%	
Target Compounds						
2) Dichlorodifluoromethane	1.385	85	19048	2.119	ug/L	97
3) Chloromethane	1.520	50	65706	5.587	ug/L	99
5) Vinyl chloride	1.601	62	47541	4.513	ug/L	99
6) Bromomethane	1.858	94	23595	3.509	ug/L	99
8) Chloroethane	1.932	64	26263	4.231	ug/L	97
9) Trichlorofluoromethane	2.138	101	104327	9.043	ug/L	99
10) 1,1,2-Trichloro-1,2,2-...	2.575	101	28887	4.501	ug/L	98
12) 1,1-Dichloroethene	2.575	96	36884	5.442	ug/L	97
16) Methylene chloride	3.038	84	32271	3.116	ug/L	97
17) Methyl tert-butyl Ether	3.372	73	94397	5.336	ug/L	99
18) trans-1,2-Dichloroethene	3.346	96	47942	6.317	ug/L	95
22) cis-1,2-Dichloroethene	4.665	96	53861	6.394	ug/L	96
23) Bromochloromethane	4.977	128	8087	2.009	ug/L	93
25) Chloroform	5.089	83	69887	4.561	ug/L	99
27) 1,2-Dichloroethane	5.797	62	46773	5.016	ug/L	99
29) 1,1,1-Trichloroethane	5.314	97	60079	5.107	ug/L	99
31) Carbon tetrachloride	5.523	117	50536	5.240	ug/L	100
34) Trichloroethene	6.543	95	66202	8.146	ug/L	98
37) 1,2-Dichloropropane	6.793	63	44190	4.937	ug/L	99

Data Path : Z:\voasrv\HPCHEM1\MSVOA_U\Data\VU080422\
 Data File : VU050065.D
 Acq On : 04 Aug 2022 16:22
 Operator : SY/MD
 Sample : N4027-10
 Misc : 25.0mL/MSVOA_U/WATER
 ALS Vial : 12 Sample Multiplier: 1

Instrument :
 MSVOA_U
 ClientSampleId :
 GBJH4

Quant Time: Aug 05 04:53:22 2022
 Quant Method : Z:\voasrv\HPCHEM1\MSVOA_U\Method\SFAMUTR080422WMA.M
 Quant Title : TRACE VOA SFAM1.0
 QLast Update : Fri Aug 05 04:52:21 2022
 Response via : Initial Calibration

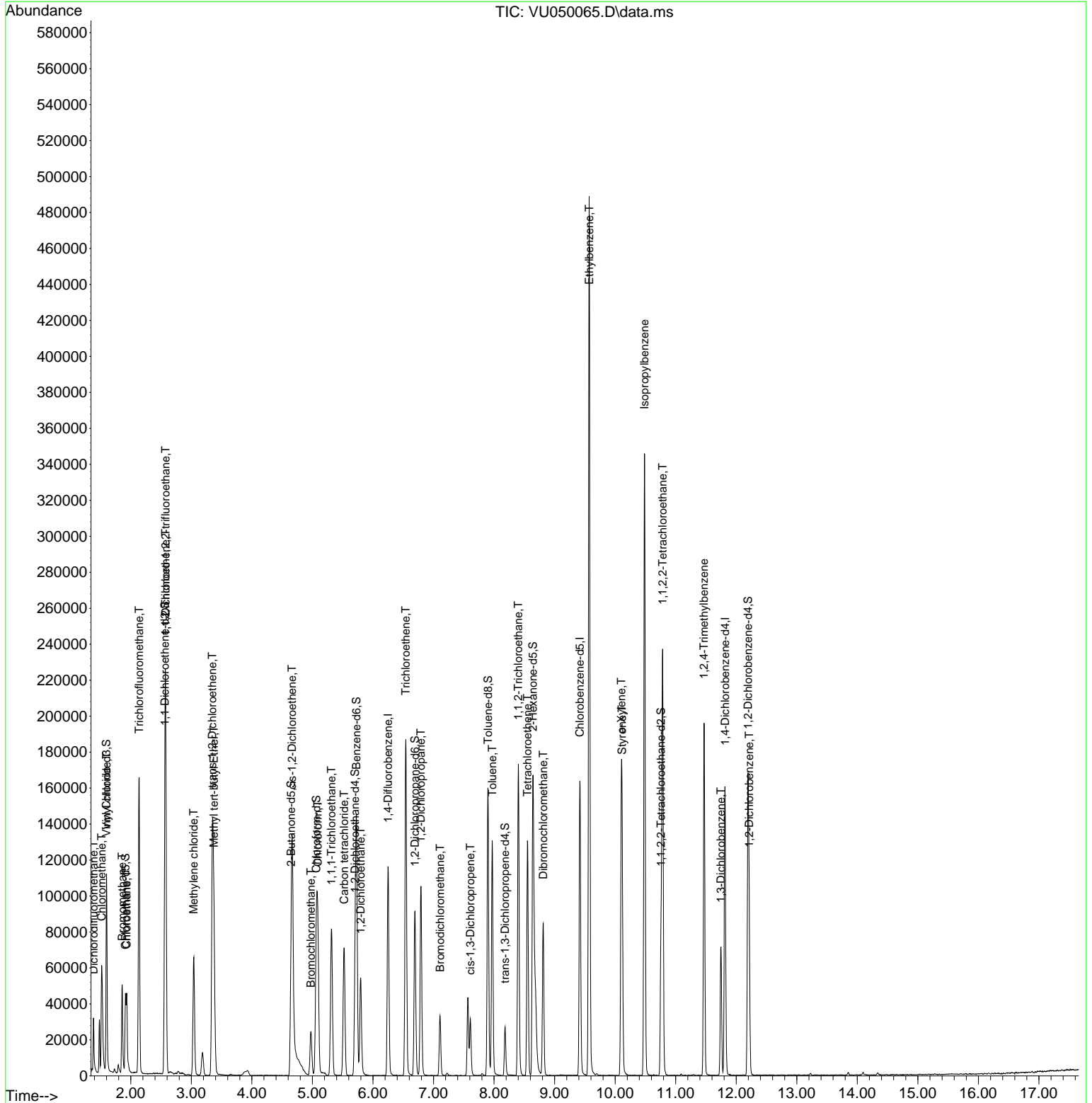
Compound	R.T.	QIon	Response	Conc	Units	Dev(Min)
38) Bromodichloromethane	7.108	83	23046	2.120	ug/L	99
39) cis-1,3-Dichloropropene	7.610	75	18752	1.605	ug/L	97
42) Toluene	7.970	91	98701	2.929	ug/L	100
45) 1,1,2-Trichloroethane	8.401	97	56006	8.371	ug/L	94
47) Tetrachloroethene	8.552	164	30025	5.157	ug/L	97
49) Dibromochloromethane	8.813	129	45382	6.129	ug/L	99
52) Ethylbenzene	9.571	91	346190	10.528	ug/L	100
54) o-Xylene	10.102	106	36148	2.990	ug/L	100
55) Styrene	10.115	104	51099	2.530	ug/L	100
57) 1,1,2,2-Tetrachloroethane	10.784	83	43394	4.936	ug/L	98
60) Isopropylbenzene	10.484	105	221069	7.498	ug/L	99
63) 1,2,4-Trimethylbenzene	11.468	105	109505	4.825	ug/L	99
64) 1,3-Dichlorobenzene	11.748	146	31353	2.110	ug/L	96
67) 1,2-Dichlorobenzene	12.214	146	30561	2.124	ug/L	96

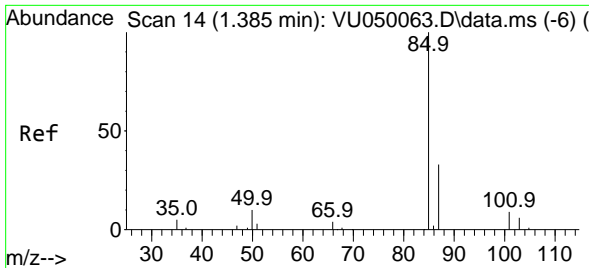
(#) = qualifier out of range (m) = manual integration (+) = signals summed

Data Path : Z:\voasrv\HPCHEM1\MSVOA_U\Data\VU080422\
 Data File : VU050065.D
 Acq On : 04 Aug 2022 16:22
 Operator : SY/MD
 Sample : N4027-10
 Misc : 25.0mL/MSVOA_U/WATER
 ALS Vial : 12 Sample Multiplier: 1

Instrument :
 MSVOA_U
 ClientSampleId :
 GBJH4

Quant Time: Aug 05 04:53:22 2022
 Quant Method : Z:\voasrv\HPCHEM1\MSVOA_U\Method\SFAMUTR080422WMA.M
 Quant Title : TRACE VOA SFAM1.0
 QLast Update : Fri Aug 05 04:52:21 2022
 Response via : Initial Calibration

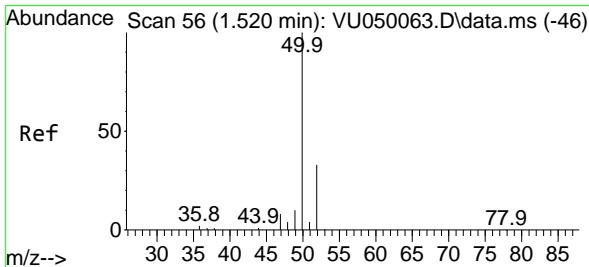
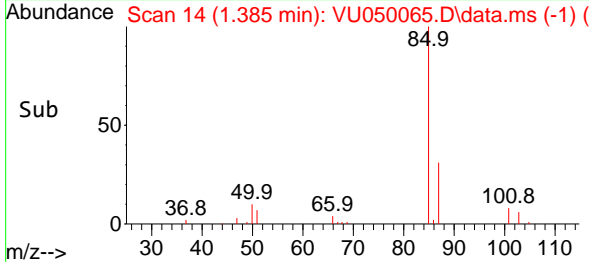
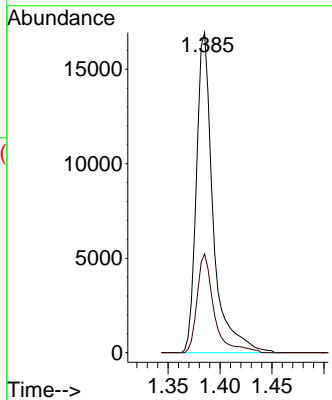
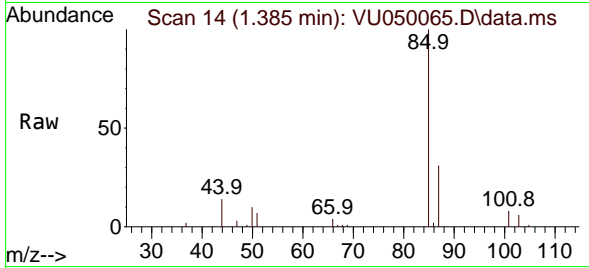




#2
 Dichlorodifluoromethane
 Concen: 2.119 ug/L
 RT: 1.385 min Scan# 14
 Delta R.T. 0.000 min
 Lab File: VU050065.D
 Acq: 04 Aug 2022 16:22

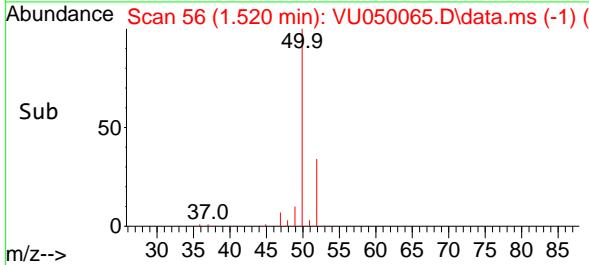
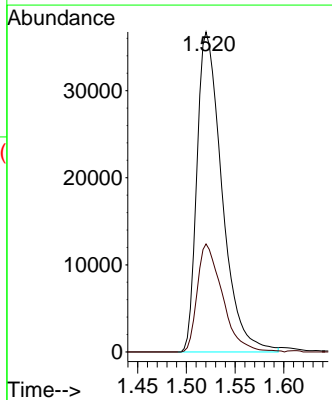
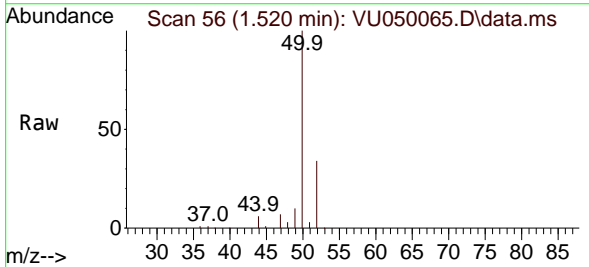
Instrument :
 MSVOA_U
 ClientSampleId :
 GBJH4

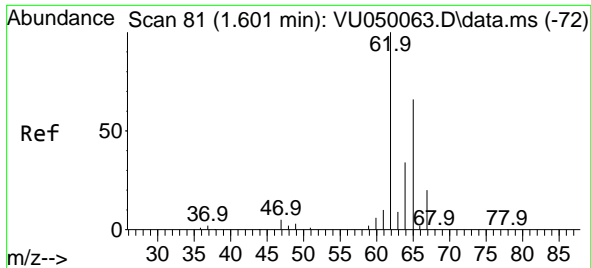
Tgt Ion: 85 Resp: 19048
 Ion Ratio Lower Upper
 85 100
 87 31.1 26.2 39.4



#3
 Chloromethane
 Concen: 5.587 ug/L
 RT: 1.520 min Scan# 56
 Delta R.T. 0.000 min
 Lab File: VU050065.D
 Acq: 04 Aug 2022 16:22

Tgt Ion: 50 Resp: 65706
 Ion Ratio Lower Upper
 50 100
 52 33.8 23.2 43.2

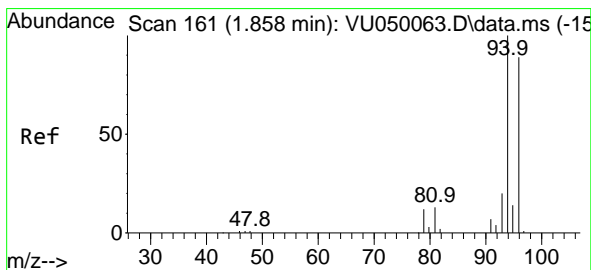
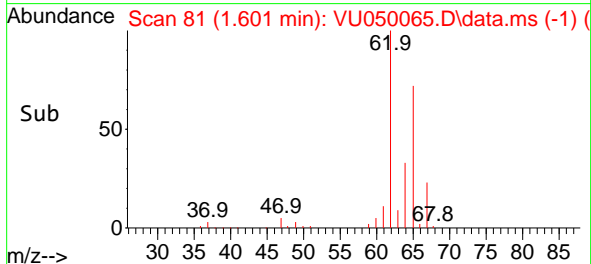
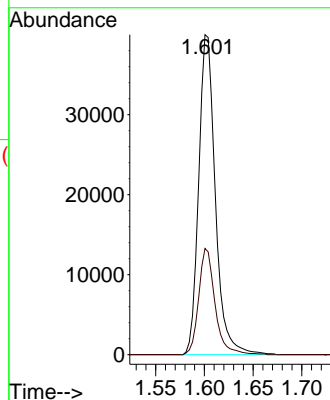
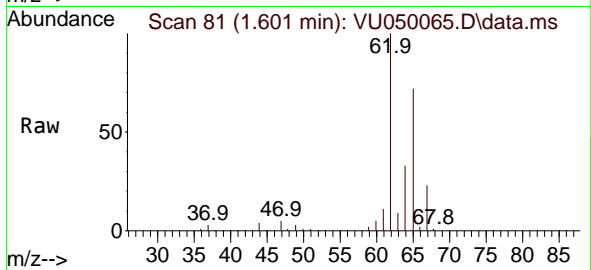




#5
 Vinyl chloride
 Concen: 4.513 ug/L
 RT: 1.601 min Scan# 81
 Delta R.T. 0.000 min
 Lab File: VU050065.D
 Acq: 04 Aug 2022 16:22

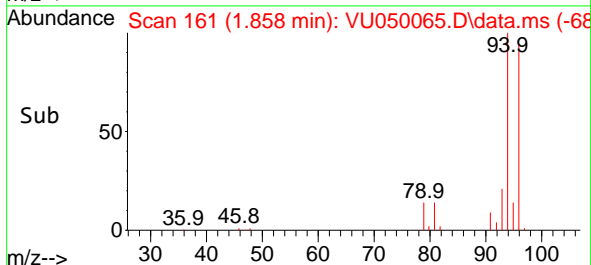
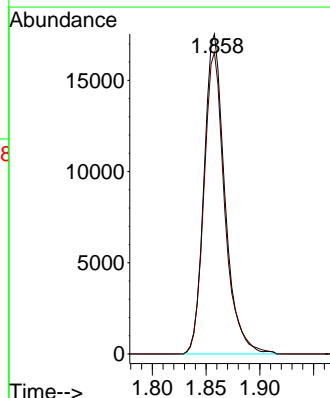
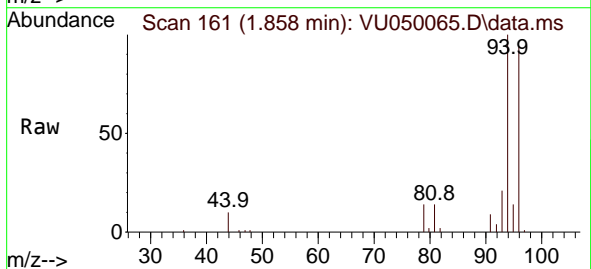
Instrument :
 MSVOA_U
 ClientSampleId :
 GBJH4

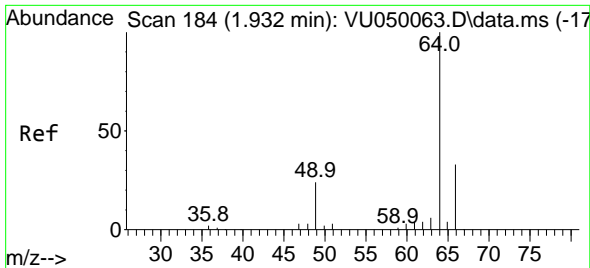
Tgt Ion: 62 Resp: 47541
 Ion Ratio Lower Upper
 62 100
 64 33.2 22.8 42.4



#6
 Bromomethane
 Concen: 3.509 ug/L
 RT: 1.858 min Scan# 161
 Delta R.T. 0.000 min
 Lab File: VU050065.D
 Acq: 04 Aug 2022 16:22

Tgt Ion: 94 Resp: 23595
 Ion Ratio Lower Upper
 94 100
 96 94.2 65.3 121.3

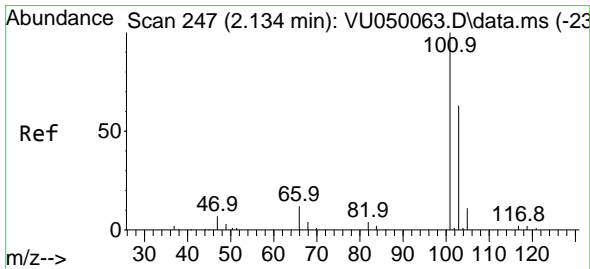
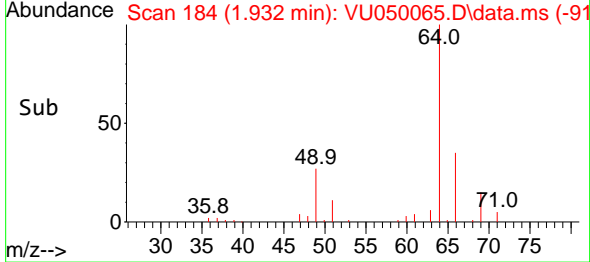
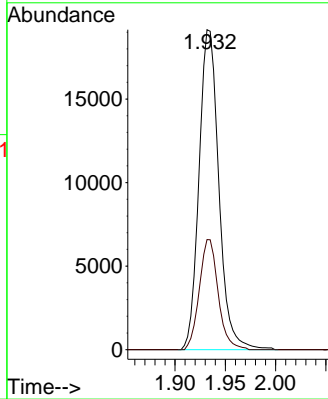
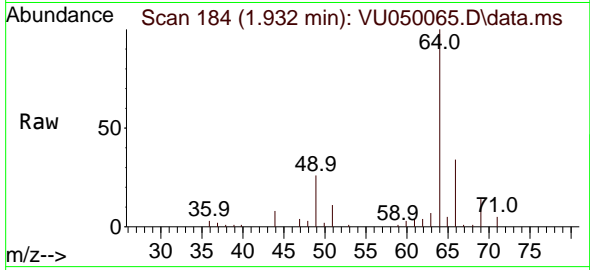




#8
 Chloroethane
 Concen: 4.231 ug/L
 RT: 1.932 min Scan# 184
 Delta R.T. 0.000 min
 Lab File: VU050065.D
 Acq: 04 Aug 2022 16:22

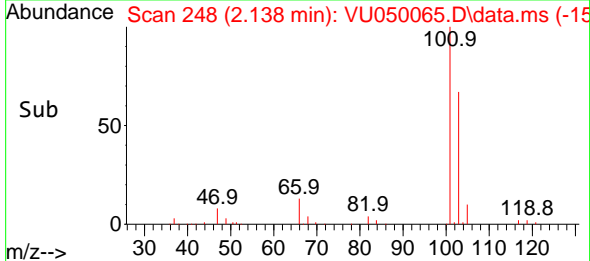
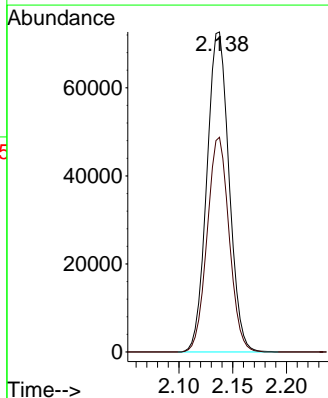
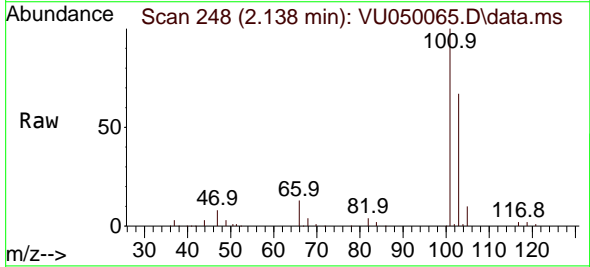
Instrument : MSVOA_U
 ClientSampleId : GBJH4

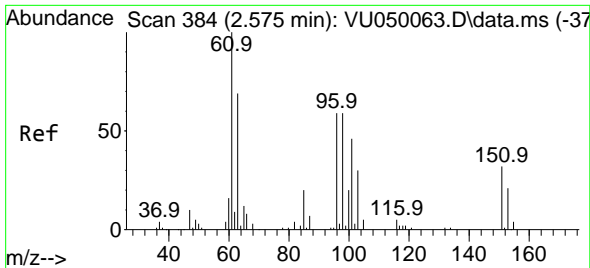
Tgt Ion: 64 Resp: 26263
 Ion Ratio Lower Upper
 64 100
 66 34.4 22.8 42.4



#9
 Trichlorofluoromethane
 Concen: 9.043 ug/L
 RT: 2.138 min Scan# 248
 Delta R.T. 0.003 min
 Lab File: VU050065.D
 Acq: 04 Aug 2022 16:22

Tgt Ion: 101 Resp: 104327
 Ion Ratio Lower Upper
 101 100
 103 66.6 52.6 78.8

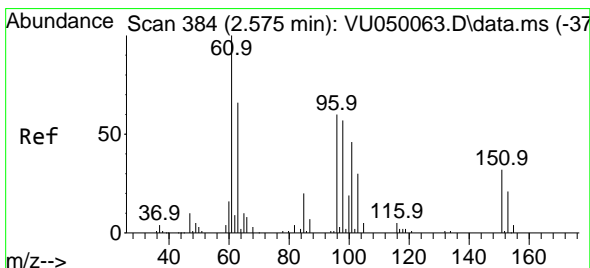
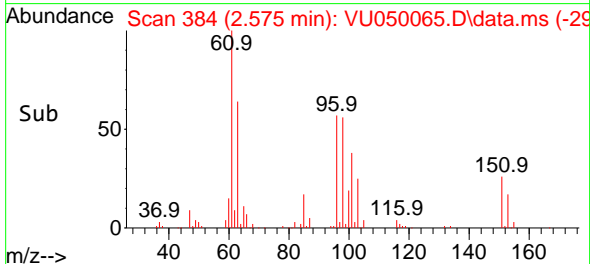
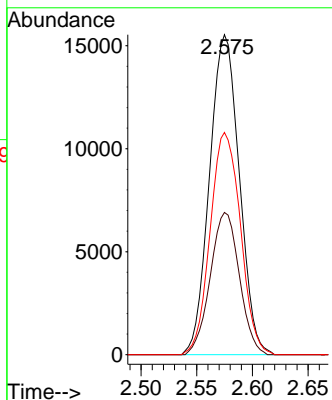
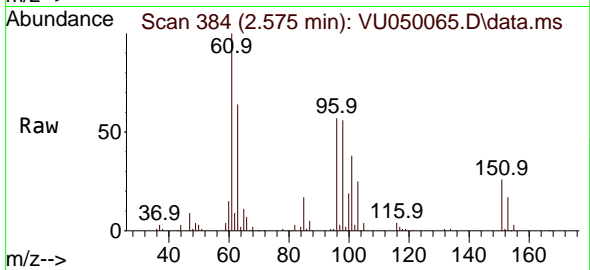




#10
 1,1,2-Trichloro-1,2,2-trifluoroethane
 Concen: 4.501 ug/L
 RT: 2.575 min Scan# 384
 Delta R.T. 0.000 min
 Lab File: VU050065.D
 Acq: 04 Aug 2022 16:22

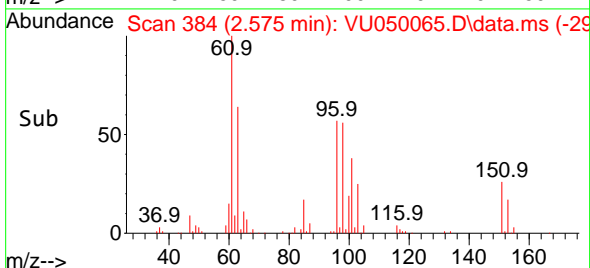
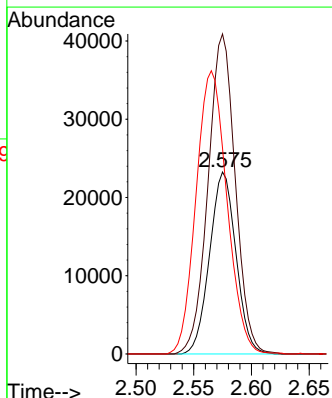
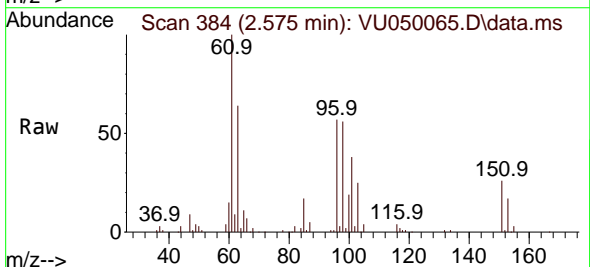
Instrument :
 MSVOA_U
 ClientSampleId :
 GBJH4

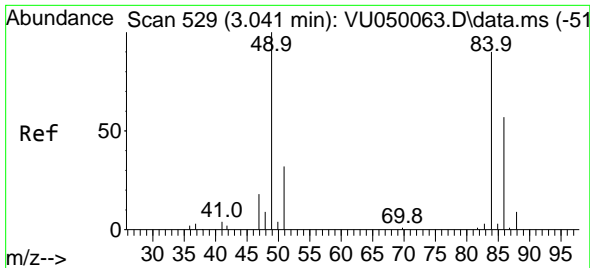
Tgt Ion	Resp	Lower	Upper
101	28887		
101	100		
85	43.4	35.6	53.4
151	70.7	55.2	82.8



#12
 1,1-Dichloroethene
 Concen: 5.442 ug/L
 RT: 2.575 min Scan# 384
 Delta R.T. 0.000 min
 Lab File: VU050065.D
 Acq: 04 Aug 2022 16:22

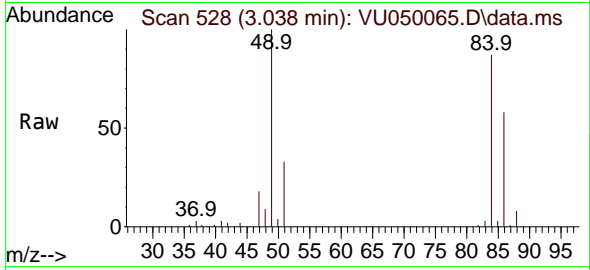
Tgt Ion	Resp	Lower	Upper
96	36884		
96	100		
61	175.8	122.7	227.9
63	113.1	85.1	158.1



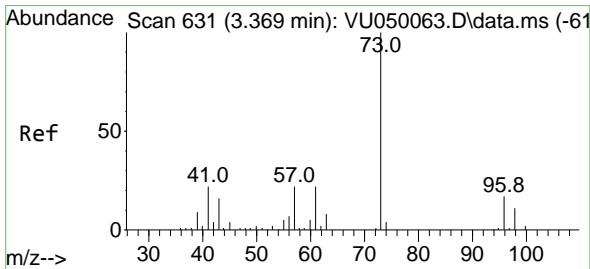
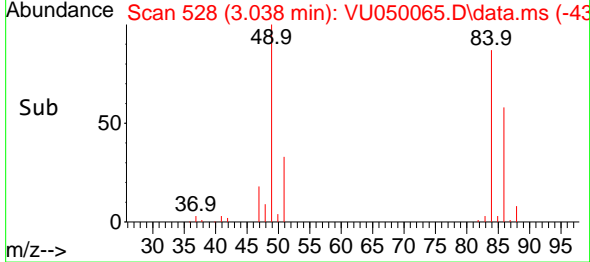
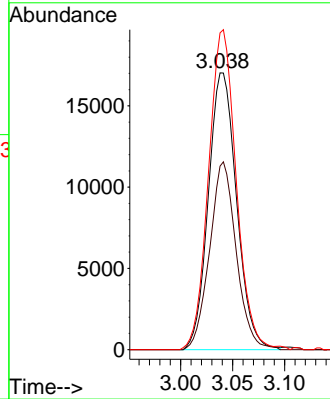


#16
 Methylene chloride
 Concen: 3.116 ug/L
 RT: 3.038 min Scan# 51
 Delta R.T. -0.003 min
 Lab File: VU050065.D
 Acq: 04 Aug 2022 16:22

Instrument :
 MSVOA_U
 ClientSampleId :
 GBJH4

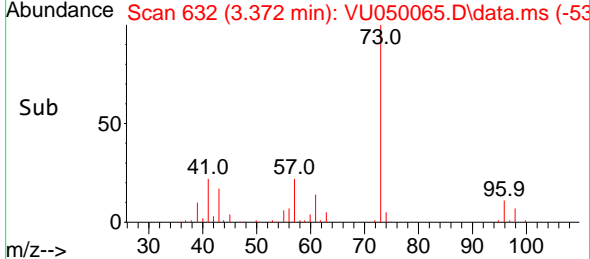
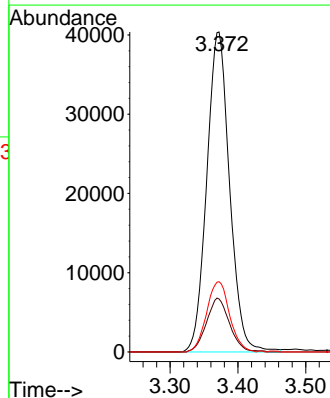
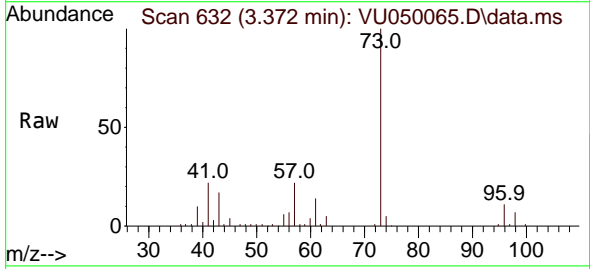


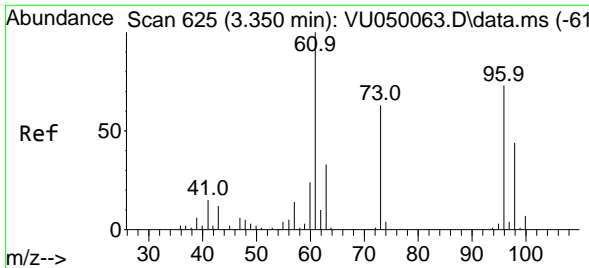
Tgt Ion: 84 Resp: 32271
 Ion Ratio Lower Upper
 84 100
 86 66.3 45.9 85.3
 49 114.5 77.6 144.0



#17
 Methyl tert-butyl Ether
 Concen: 5.336 ug/L
 RT: 3.372 min Scan# 632
 Delta R.T. 0.003 min
 Lab File: VU050065.D
 Acq: 04 Aug 2022 16:22

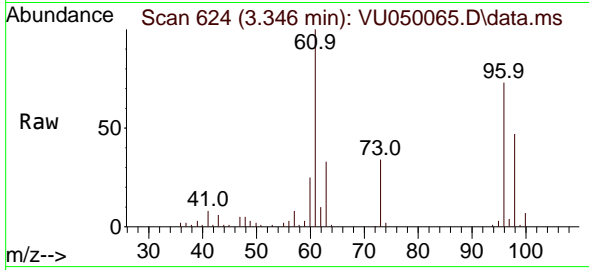
Tgt Ion: 73 Resp: 94397
 Ion Ratio Lower Upper
 73 100
 43 17.0 13.5 20.3
 57 22.2 17.4 26.2





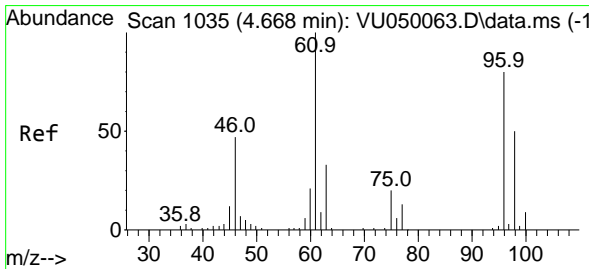
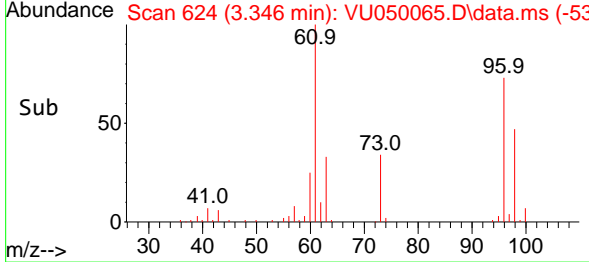
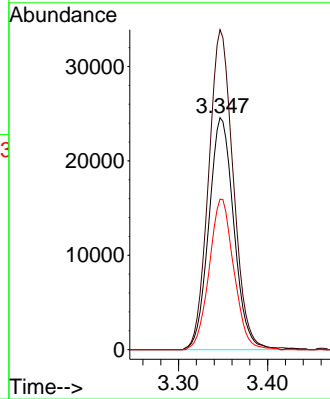
#18
 trans-1,2-Dichloroethene
 Concen: 6.317 ug/L
 RT: 3.346 min Scan# 61
 Delta R.T. -0.003 min
 Lab File: VU050065.D
 Acq: 04 Aug 2022 16:22

Instrument : MSVOA_U
 ClientSampleId : GBJH4



Tgt Ion: 96 Resp: 47942

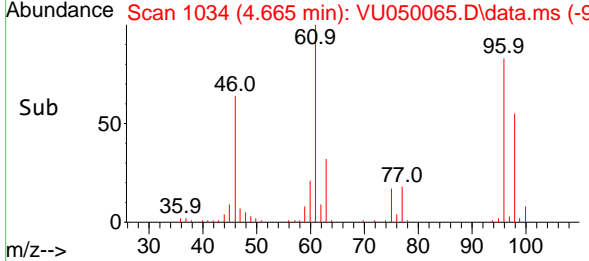
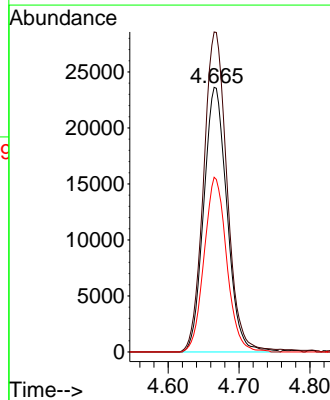
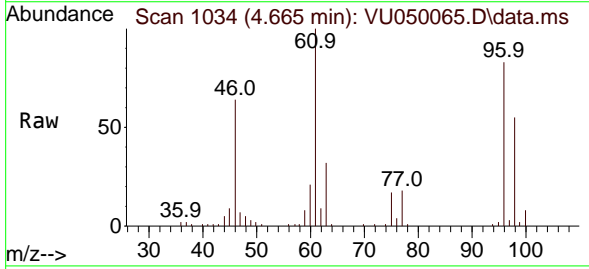
Ion	Ratio	Lower	Upper
96	100		
61	137.9	92.3	171.5
98	64.9	43.2	80.2

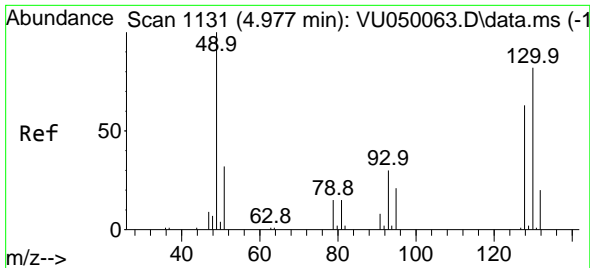


#22
 cis-1,2-Dichloroethene
 Concen: 6.394 ug/L
 RT: 4.665 min Scan# 1034
 Delta R.T. -0.003 min
 Lab File: VU050065.D
 Acq: 04 Aug 2022 16:22

Tgt Ion: 96 Resp: 53861

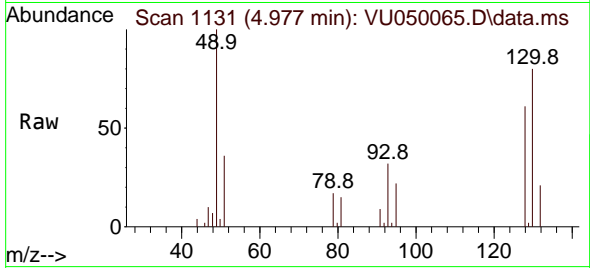
Ion	Ratio	Lower	Upper
96	100		
61	120.9	89.0	165.4
98	66.0	45.2	84.0





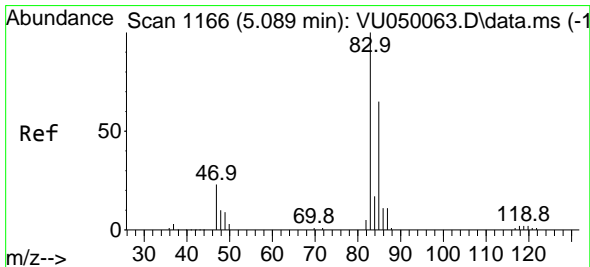
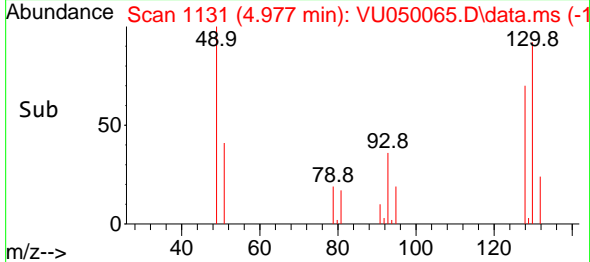
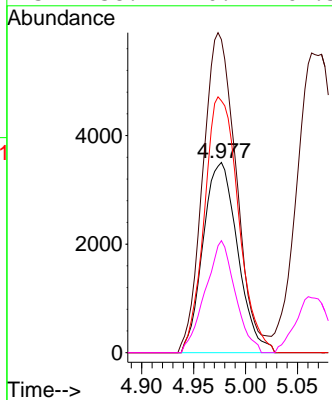
#23
 Bromochloromethane
 Concen: 2.009 ug/L
 RT: 4.977 min Scan# 1131
 Delta R.T. 0.000 min
 Lab File: VU050065.D
 Acq: 04 Aug 2022 16:22

Instrument : MSVOA_U
 ClientSampleId : GBJH4



Tgt Ion:128 Resp: 8087

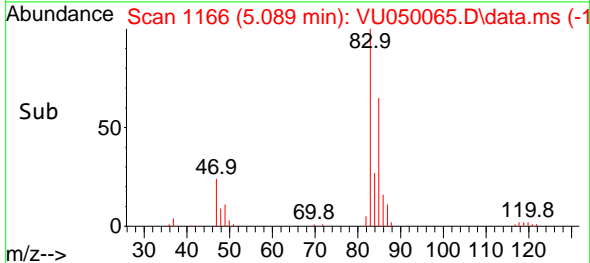
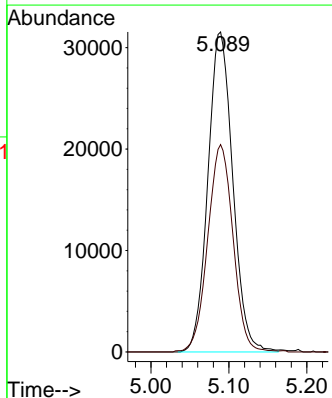
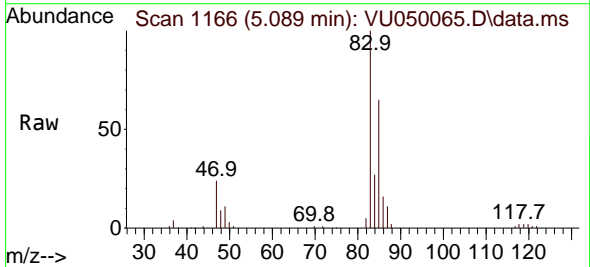
Ion	Ratio	Lower	Upper
128	100		
49	171.0	111.4	206.8
130	132.4	90.2	167.4
51	58.9	40.9	61.3

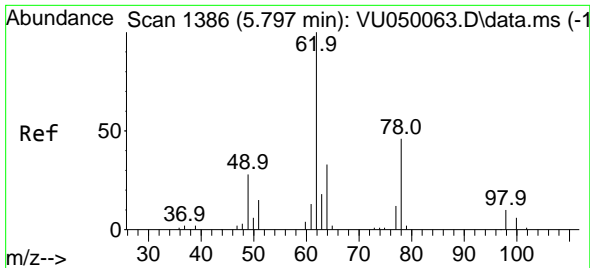


#25
 Chloroform
 Concen: 4.561 ug/L
 RT: 5.089 min Scan# 1166
 Delta R.T. 0.000 min
 Lab File: VU050065.D
 Acq: 04 Aug 2022 16:22

Tgt Ion: 83 Resp: 69887

Ion	Ratio	Lower	Upper
83	100		
85	64.8	46.1	85.5

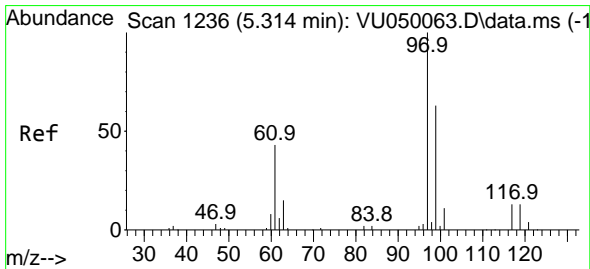
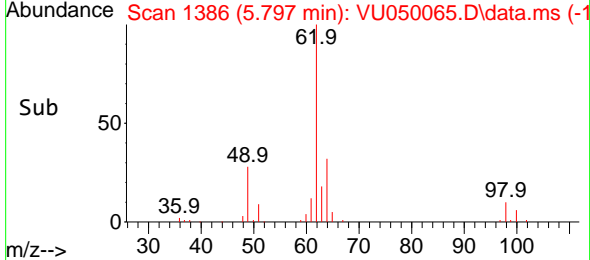
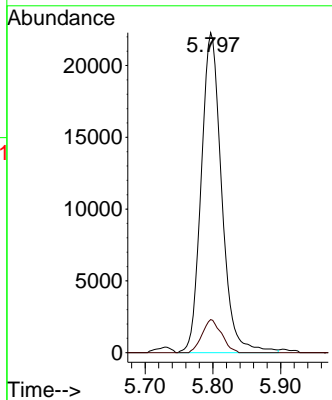
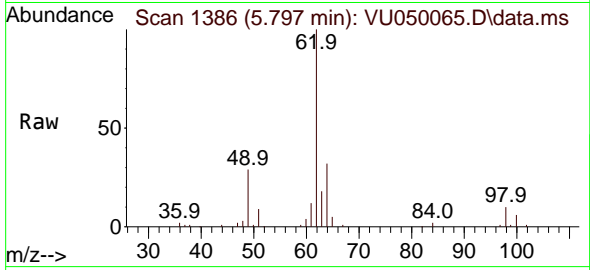




#27
 1,2-Dichloroethane
 Concen: 5.016 ug/L
 RT: 5.797 min Scan# 1386
 Delta R.T. 0.000 min
 Lab File: VU050065.D
 Acq: 04 Aug 2022 16:22

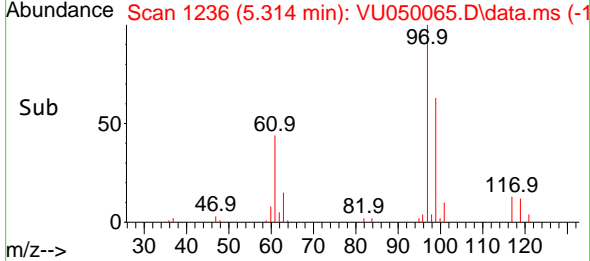
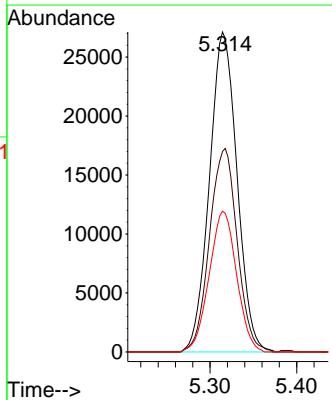
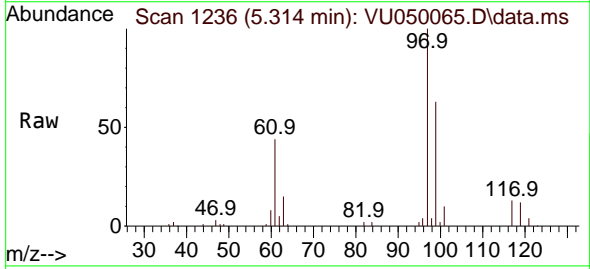
Instrument : MSVOA_U
 ClientSampleId : GBJH4

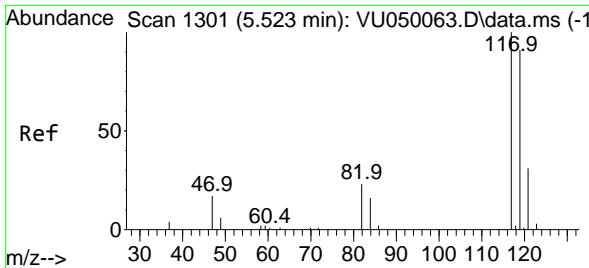
Tgt Ion: 62 Resp: 46773
 Ion Ratio Lower Upper
 62 100
 98 10.3 7.8 11.8



#29
 1,1,1-Trichloroethane
 Concen: 5.107 ug/L
 RT: 5.314 min Scan# 1236
 Delta R.T. 0.000 min
 Lab File: VU050065.D
 Acq: 04 Aug 2022 16:22

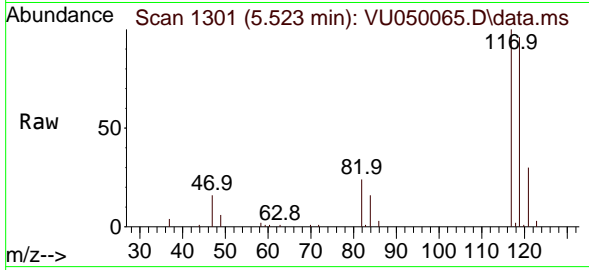
Tgt Ion: 97 Resp: 60079
 Ion Ratio Lower Upper
 97 100
 99 63.9 51.5 77.3
 61 43.8 34.2 51.4



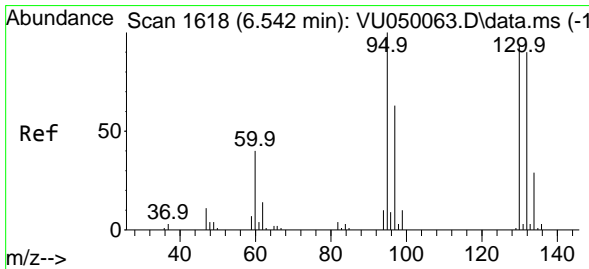
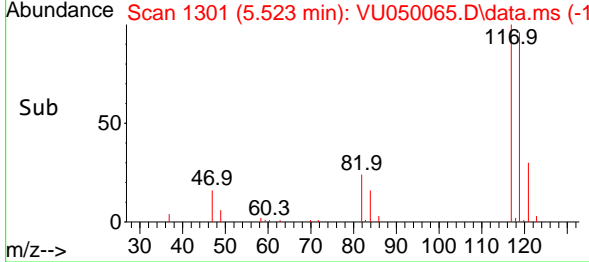
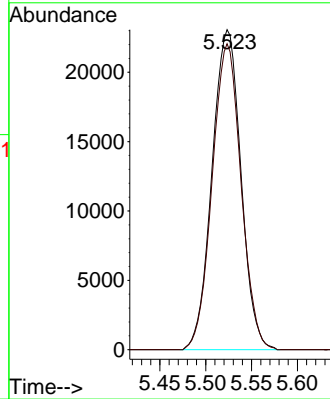


#31
 Carbon tetrachloride
 Concen: 5.240 ug/L
 RT: 5.523 min Scan# 11
 Delta R.T. 0.000 min
 Lab File: VU050065.D
 Acq: 04 Aug 2022 16:22

Instrument :
 MSVOA_U
 ClientSampleId :
 GBJH4

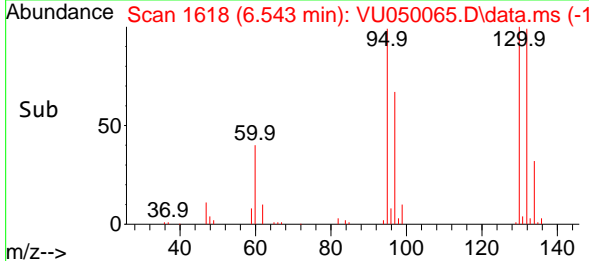
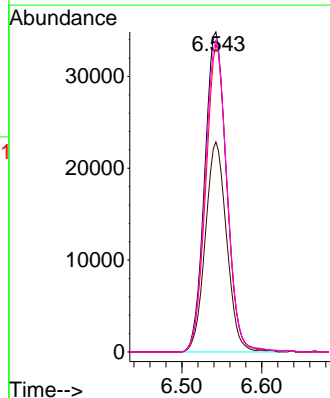
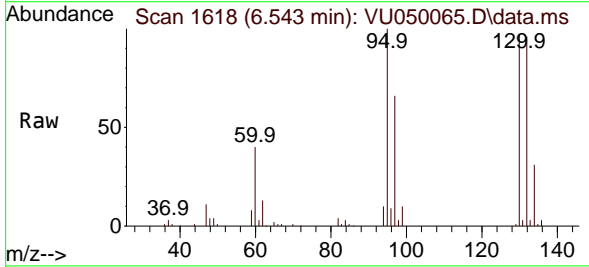


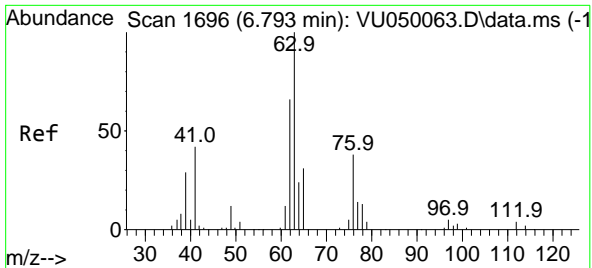
Tgt Ion:117 Resp: 50536
 Ion Ratio Lower Upper
 117 100
 119 95.4 76.0 114.0



#34
 Trichloroethene
 Concen: 8.146 ug/L
 RT: 6.543 min Scan# 1618
 Delta R.T. 0.000 min
 Lab File: VU050065.D
 Acq: 04 Aug 2022 16:22

Tgt Ion: 95 Resp: 66202
 Ion Ratio Lower Upper
 95 100
 97 65.7 45.6 84.8
 132 96.0 65.0 120.6
 130 97.3 69.3 128.7

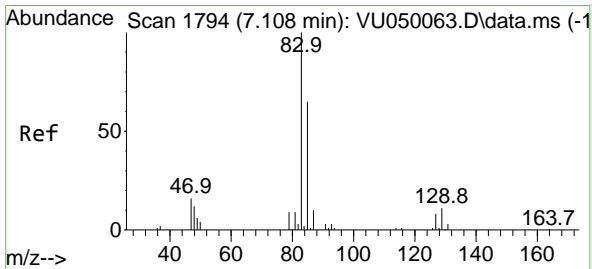
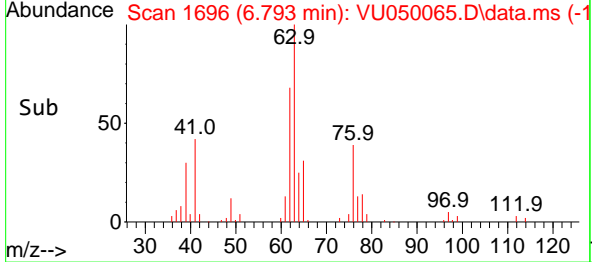
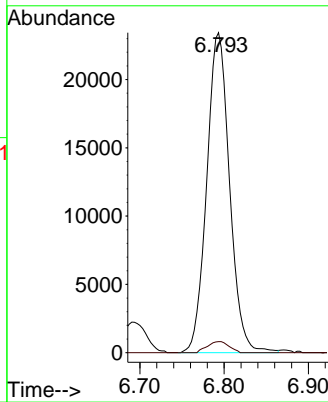
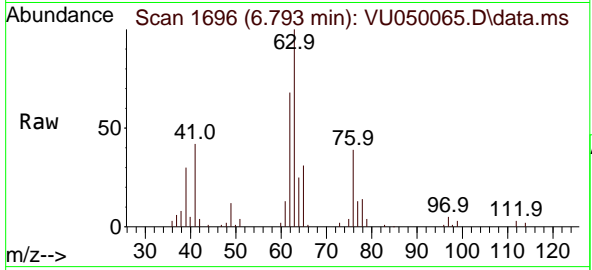




#37
 1,2-Dichloropropane
 Concen: 4.937 ug/L
 RT: 6.793 min Scan# 1696
 Delta R.T. 0.000 min
 Lab File: VU050065.D
 Acq: 04 Aug 2022 16:22

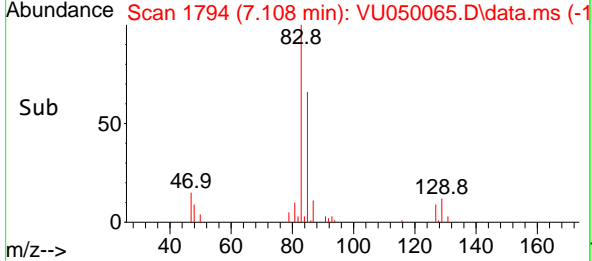
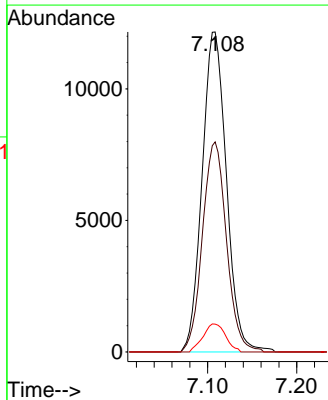
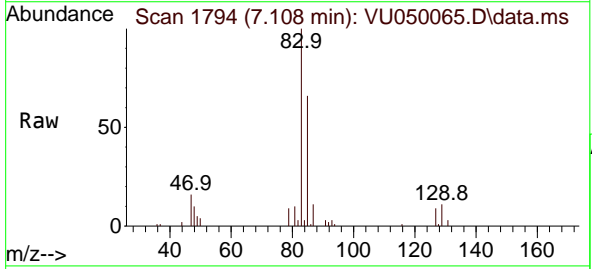
Instrument : MSVOA_U
 ClientSampleId : GBJH4

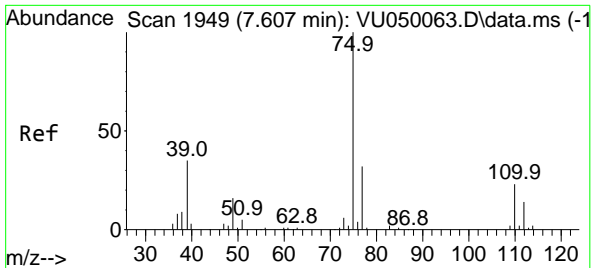
Tgt Ion: 63 Resp: 44190
 Ion Ratio Lower Upper
 63 100
 112 3.3 3.0 4.4



#38
 Bromodichloromethane
 Concen: 2.120 ug/L
 RT: 7.108 min Scan# 1794
 Delta R.T. 0.000 min
 Lab File: VU050065.D
 Acq: 04 Aug 2022 16:22

Tgt Ion: 83 Resp: 23046
 Ion Ratio Lower Upper
 83 100
 85 65.6 45.1 83.7
 127 8.7 6.8 10.2

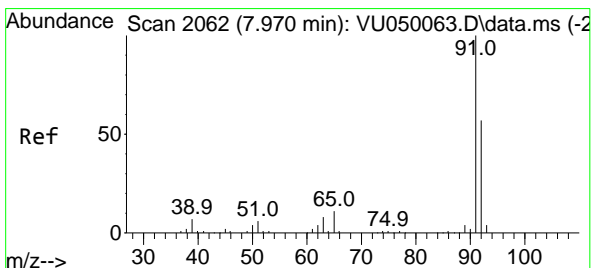
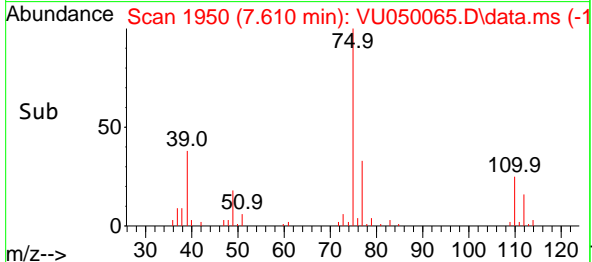
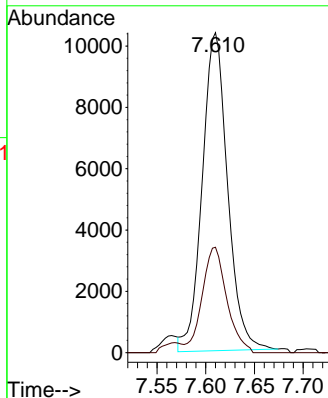
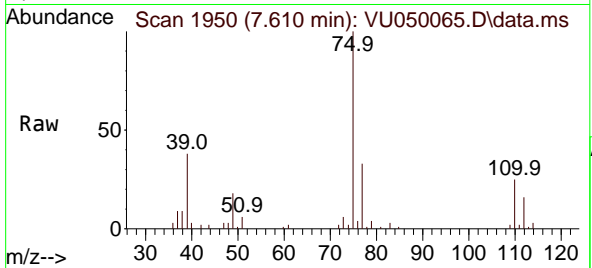




#39
 cis-1,3-Dichloropropene
 Concen: 1.605 ug/L
 RT: 7.610 min Scan# 1949
 Delta R.T. 0.003 min
 Lab File: VU050065.D
 Acq: 04 Aug 2022 16:22

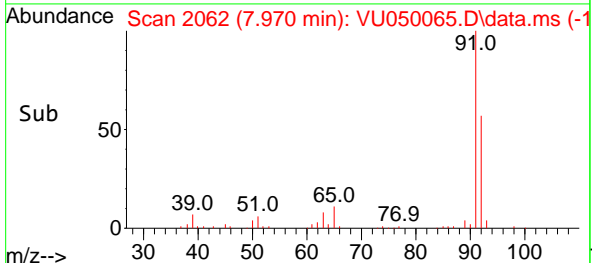
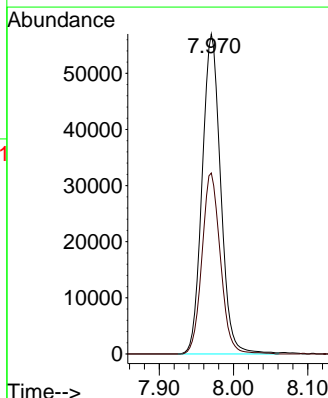
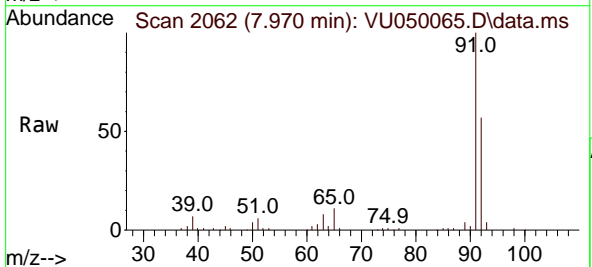
Instrument : MSVOA_U
 ClientSampleId : GBJH4

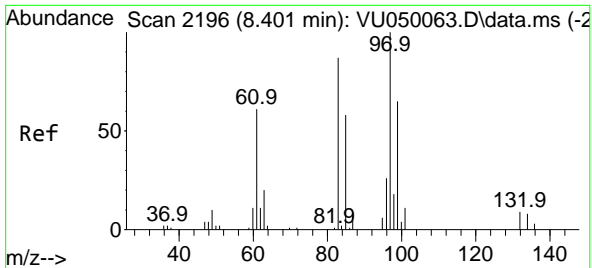
Tgt Ion: 75 Resp: 18752
 Ion Ratio Lower Upper
 75 100
 77 33.0 21.8 40.4



#42
 Toluene
 Concen: 2.929 ug/L
 RT: 7.970 min Scan# 2062
 Delta R.T. 0.000 min
 Lab File: VU050065.D
 Acq: 04 Aug 2022 16:22

Tgt Ion: 91 Resp: 98701
 Ion Ratio Lower Upper
 91 100
 92 56.5 39.8 74.0



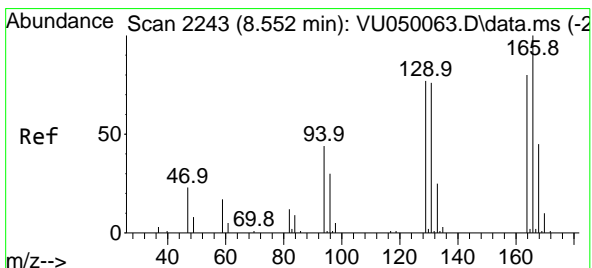
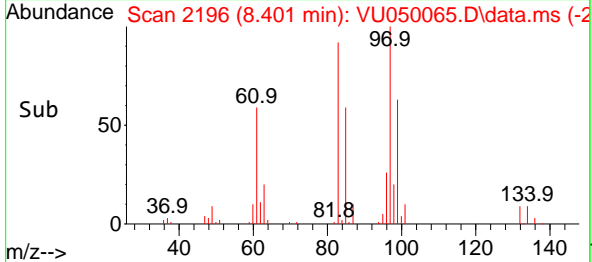
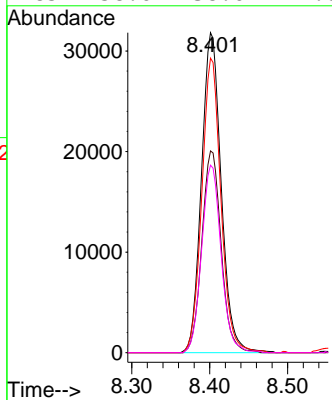
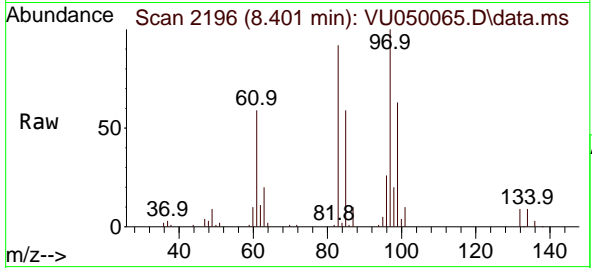


#45
 1,1,2-Trichloroethane
 Concen: 8.371 ug/L
 RT: 8.401 min Scan# 2196
 Delta R.T. 0.000 min
 Lab File: VU050065.D
 Acq: 04 Aug 2022 16:22

Instrument : MSVOA_U
 ClientSampleId : GBJH4

Tgt Ion: 97 Resp: 56006

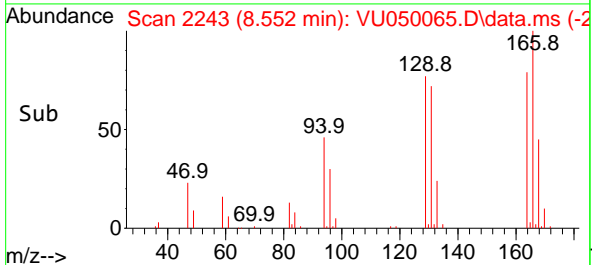
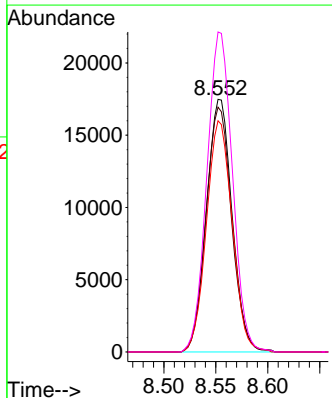
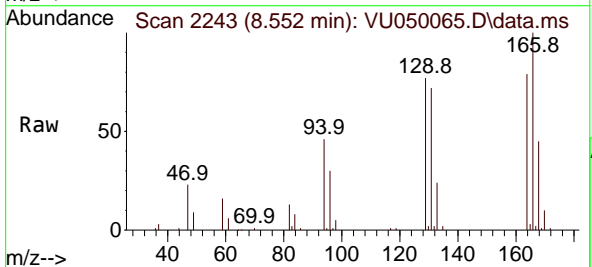
Ion	Ratio	Lower	Upper
97	100		
99	63.1	42.2	78.4
83	92.0	59.6	110.6
85	58.6	38.6	71.8

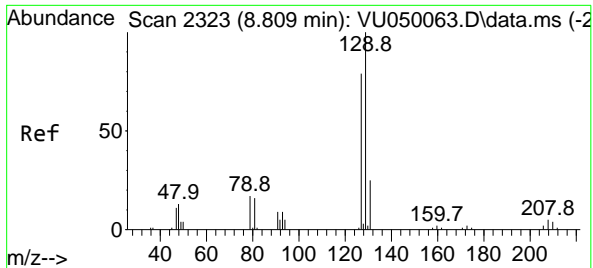


#47
 Tetrachloroethene
 Concen: 5.157 ug/L
 RT: 8.552 min Scan# 2243
 Delta R.T. 0.000 min
 Lab File: VU050065.D
 Acq: 04 Aug 2022 16:22

Tgt Ion: 164 Resp: 30025

Ion	Ratio	Lower	Upper
164	100		
129	96.9	69.0	128.1
131	91.6	65.8	122.2
166	126.7	86.1	159.9

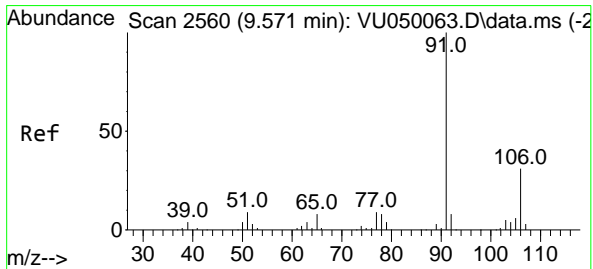
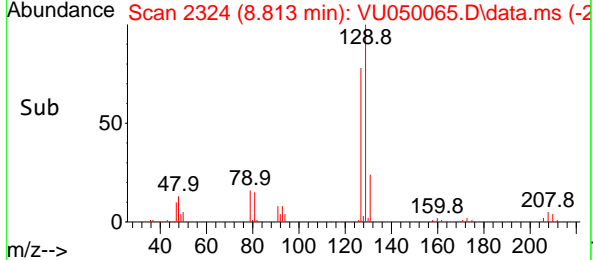
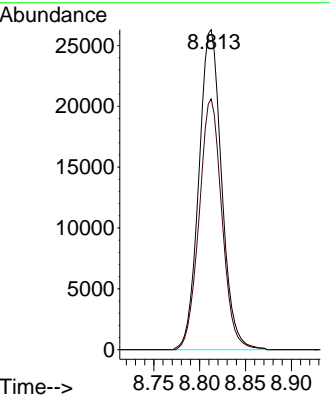
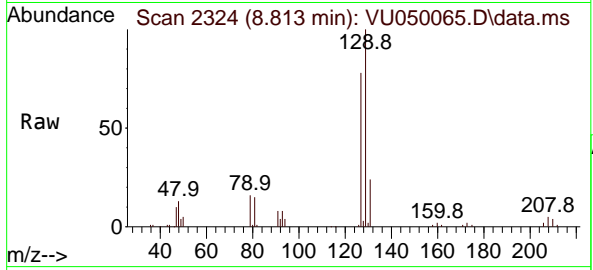




#49
 Dibromochloromethane
 Concen: 6.129 ug/L
 RT: 8.813 min Scan# 21
 Delta R.T. 0.003 min
 Lab File: VU050065.D
 Acq: 04 Aug 2022 16:22

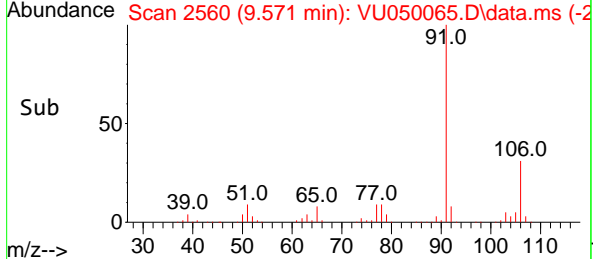
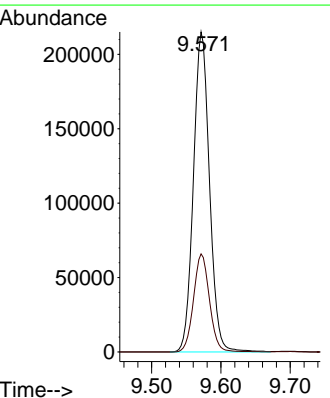
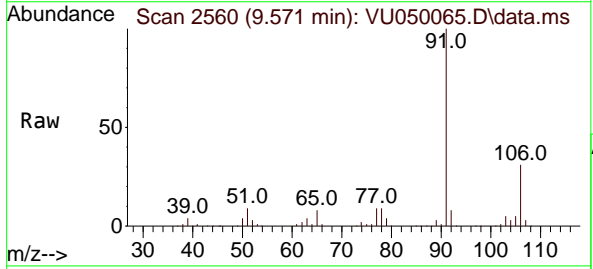
Instrument : MSVOA_U
 Client SampleId : GBJH4

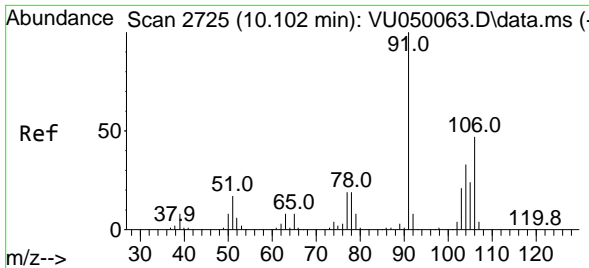
Tgt Ion: 129 Resp: 45382
 Ion Ratio Lower Upper
 129 100
 127 78.3 55.3 102.7



#52
 Ethylbenzene
 Concen: 10.528 ug/L
 RT: 9.571 min Scan# 2560
 Delta R.T. 0.000 min
 Lab File: VU050065.D
 Acq: 04 Aug 2022 16:22

Tgt Ion: 91 Resp: 346190
 Ion Ratio Lower Upper
 91 100
 106 30.7 21.3 39.5

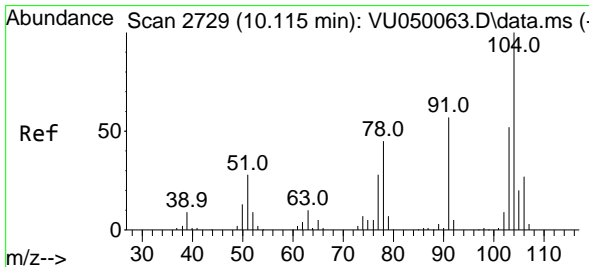
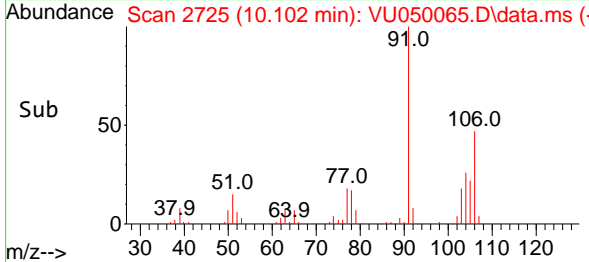
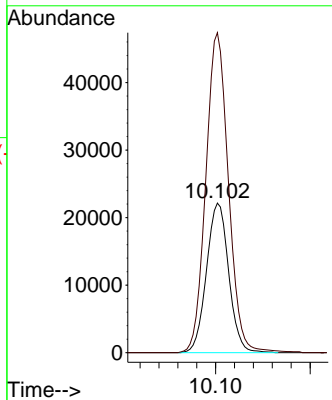
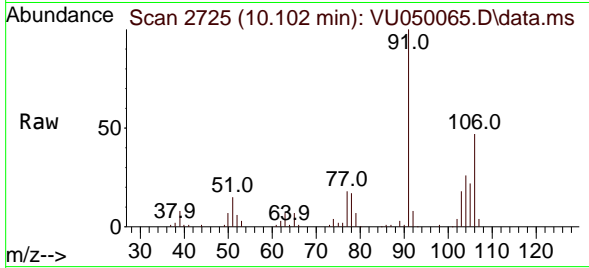




#54
 o-Xylene
 Concen: 2.990 ug/L
 RT: 10.102 min Scan# 2725
 Delta R.T. 0.000 min
 Lab File: VU050065.D
 Acq: 04 Aug 2022 16:22

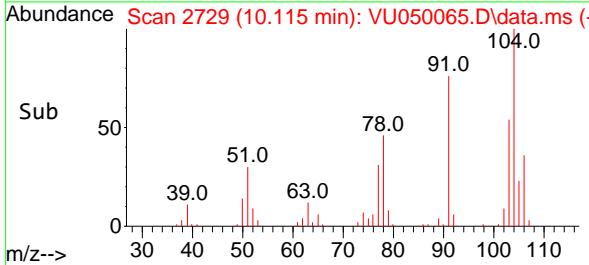
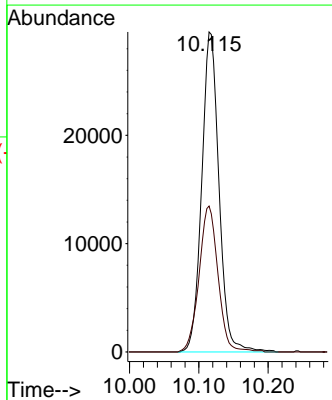
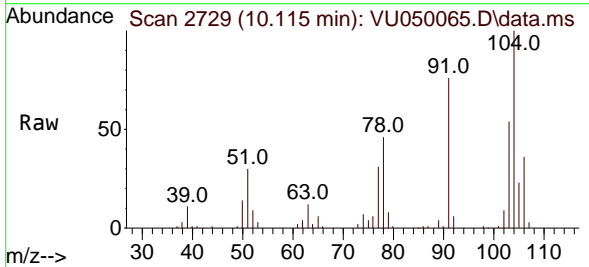
Instrument : MSVOA_U
 ClientSampleId : GBJH4

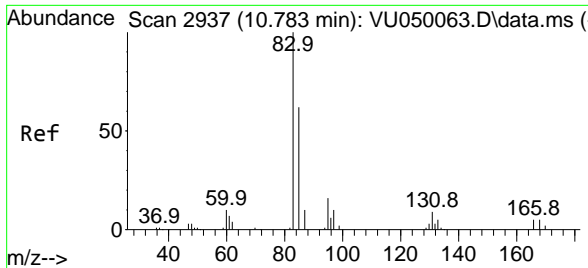
Tgt Ion:106 Resp: 36148
 Ion Ratio Lower Upper
 106 100
 91 213.8 149.4 277.4



#55
 Styrene
 Concen: 2.530 ug/L
 RT: 10.115 min Scan# 2729
 Delta R.T. 0.000 min
 Lab File: VU050065.D
 Acq: 04 Aug 2022 16:22

Tgt Ion:104 Resp: 51099
 Ion Ratio Lower Upper
 104 100
 78 45.6 31.9 59.3



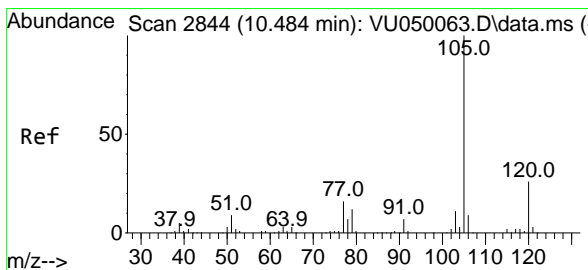
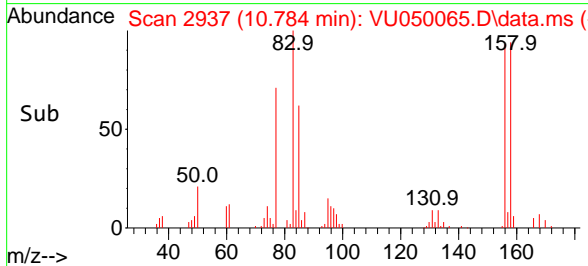
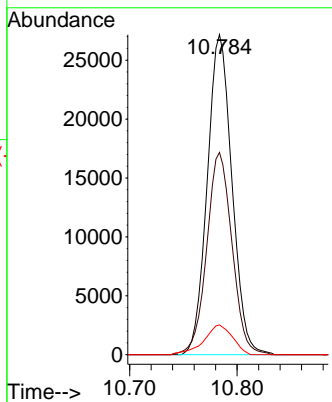
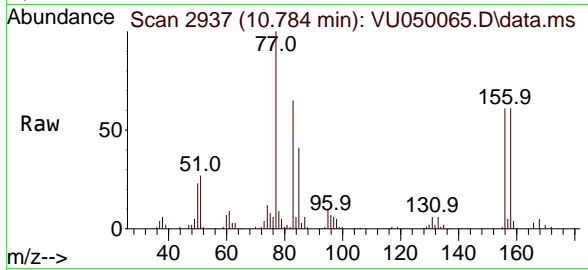


#57
 1,1,2,2-Tetrachloroethane
 Concen: 4.936 ug/L
 RT: 10.784 min Scan# 2937
 Delta R.T. 0.000 min
 Lab File: VU050065.D
 Acq: 04 Aug 2022 16:22

Instrument : MSVOA_U
 ClientSampleId : GBJH4

Tgt Ion: 83 Resp: 43394

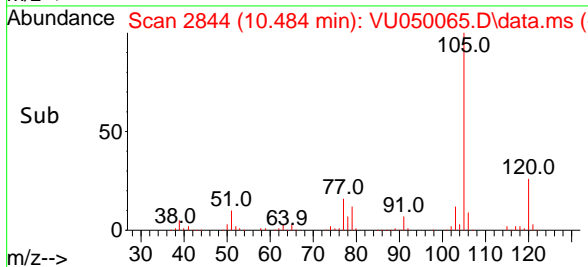
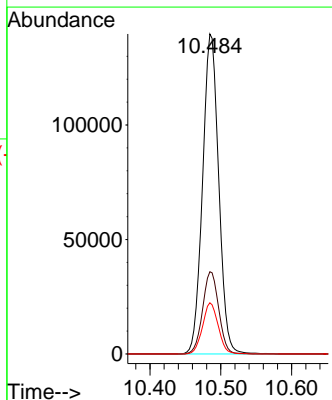
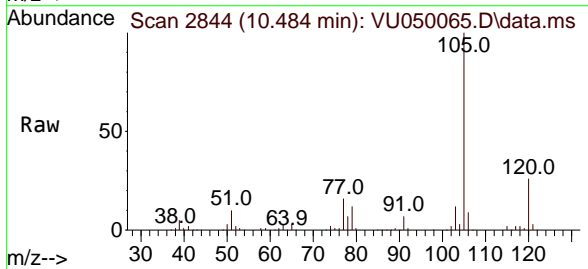
Ion	Ratio	Lower	Upper
83	100		
85	63.2	45.2	84.0
131	9.3	6.6	9.8

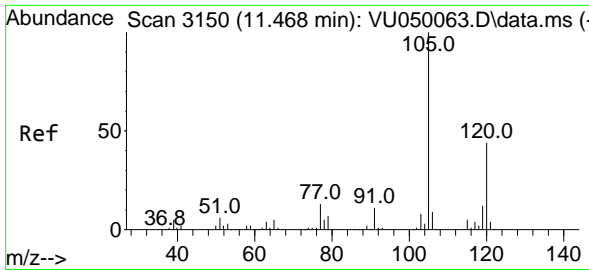


#60
 Isopropylbenzene
 Concen: 7.498 ug/L
 RT: 10.484 min Scan# 2844
 Delta R.T. 0.000 min
 Lab File: VU050065.D
 Acq: 04 Aug 2022 16:22

Tgt Ion: 105 Resp: 221069

Ion	Ratio	Lower	Upper
105	100		
120	25.7	20.8	31.2
77	15.5	12.6	19.0

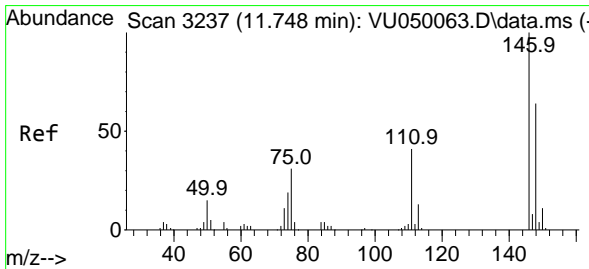
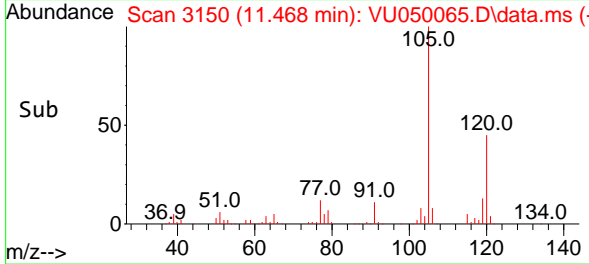
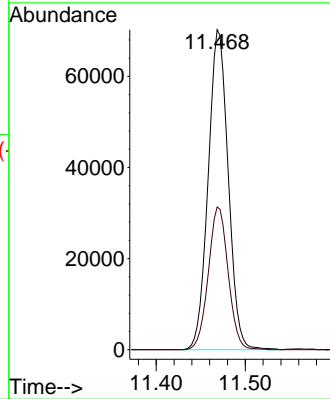
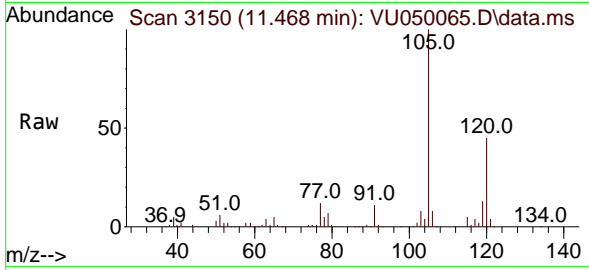




#63
 1,2,4-Trimethylbenzene
 Concen: 4.825 ug/L
 RT: 11.468 min Scan# 3150
 Delta R.T. 0.000 min
 Lab File: VU050065.D
 Acq: 04 Aug 2022 16:22

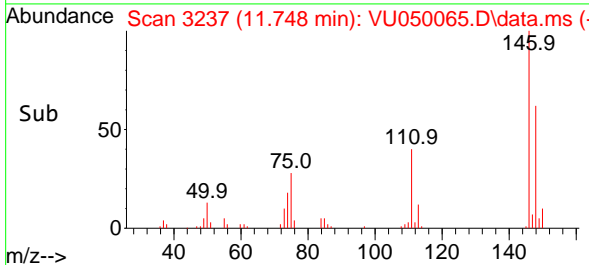
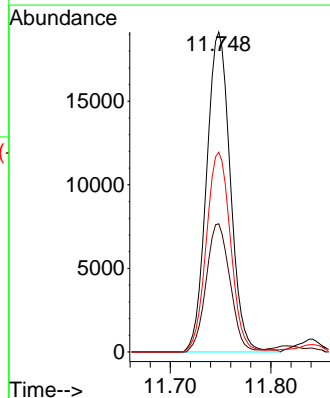
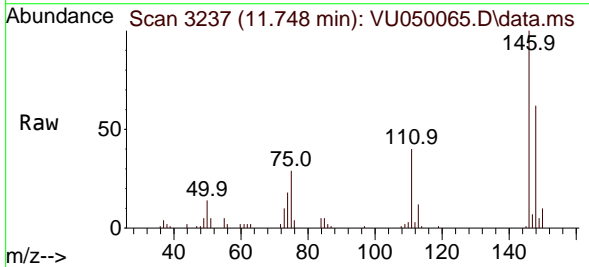
Instrument : MSVOA_U
 ClientSampleId : GBJH4

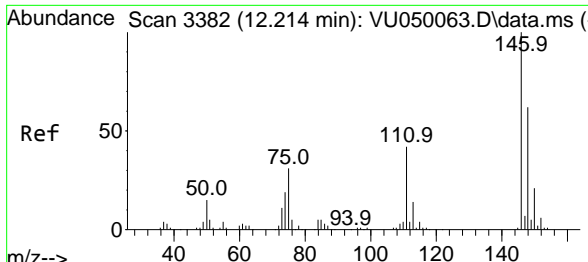
Tgt Ion:105 Resp: 109505
 Ion Ratio Lower Upper
 105 100
 120 44.1 35.9 53.9



#64
 1,3-Dichlorobenzene
 Concen: 2.110 ug/L
 RT: 11.748 min Scan# 3237
 Delta R.T. 0.000 min
 Lab File: VU050065.D
 Acq: 04 Aug 2022 16:22

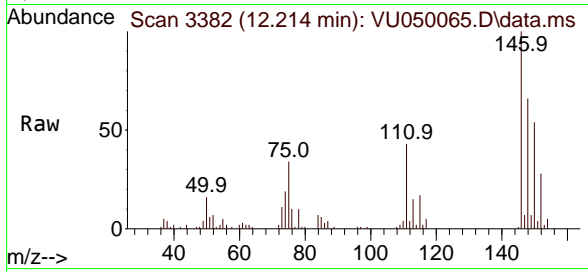
Tgt Ion:146 Resp: 31353
 Ion Ratio Lower Upper
 146 100
 111 40.0 29.9 55.5
 148 62.4 45.8 85.2





#67
 1,2-Dichlorobenzene
 Concen: 2.124 ug/L
 RT: 12.214 min Scan# 31
 Delta R.T. 0.000 min
 Lab File: VU050065.D
 Acq: 04 Aug 2022 16:22

Instrument :
 MSVOA_U
 ClientSampleId :
 GBJH4



Tgt Ion:146 Resp: 30561

Ion	Ratio	Lower	Upper
146	100		
111	43.0	32.9	49.3
148	66.2	50.4	75.6

