

Data Path : Z:\VOASRV\HPCHEM1\MSVOA U\DATA\VU080620\
 Data File : VU039758.D
 Acq On : 06 Aug 2020 16:10
 Operator : SY/MD
 Sample : VU0806WBL02
 Misc : 25.0mL/MSVOA U/WATER
 ALS Vial : 13 Sample Multiplier: 1

Instrument :
 MSVOA_U
 ClientSampled :
 VBLK14

Integration Parameters: rteint.p
 Integrator: RTE
 Smoothing : ON
 Sampling : 1
 Start Thrs: 0.1
 Stop Thrs : 0

Filtering: 5
 Min Area: 3 % of largest Peak
 Max Peaks: 100
 Peak Location: TOP

If leading or trailing edge < 100 prefer < Baseline drop else tangent >
 Peak separation: 5

Method : Z:\VOASRV\HPCHEM1\MSVOA_U\METHOD\SOMUTR080320WMA.M
 Title : TRACE VOA SOM01.0

Signal : TIC: VU039759.D

peak #	R.T. min	first scan	max scan	last scan	PK TY	peak height	corr. area	corr. % max.	% of total
1	1.604	72	82	93	rVB	30682	35294	10.74%	1.494%
2	1.919	170	180	191	rBV	31944	40396	12.29%	1.710%
3	2.578	374	385	398	rBV2	50267	82920	25.23%	3.509%
4	3.060	526	535	545	rVB3	2846	5116	1.56%	0.217%
5	4.655	1015	1031	1064	rBV2	50229	156579	47.64%	6.627%
6	5.079	1148	1163	1180	rBV	55038	119748	36.43%	5.068%
7	5.739	1348	1368	1385	rBV3	98544	260713	79.32%	11.034%
8	6.263	1516	1531	1547	rBV	98706	179841	54.71%	7.611%
9	6.703	1654	1668	1686	rBV	69600	130381	39.67%	5.518%
10	7.571	1925	1938	1953	rBV2	33334	57428	17.47%	2.431%
11	7.906	2028	2042	2057	rBV	112223	192745	58.64%	8.157%
12	8.185	2115	2129	2142	rBV2	21394	34572	10.52%	1.463%
13	8.642	2258	2271	2296	rBV	174286	328700	100.00%	13.911%
14	8.922	2349	2358	2370	rVB3	3194	5459	1.66%	0.231%
15	9.420	2500	2513	2531	rBV	139759	230907	70.25%	9.773%
16	10.758	2917	2929	2942	rBV	54772	89332	27.18%	3.781%
17	11.809	3244	3256	3270	rBV	138260	215802	65.65%	9.133%
18	12.188	3360	3374	3386	rBV	123935	196864	59.89%	8.332%

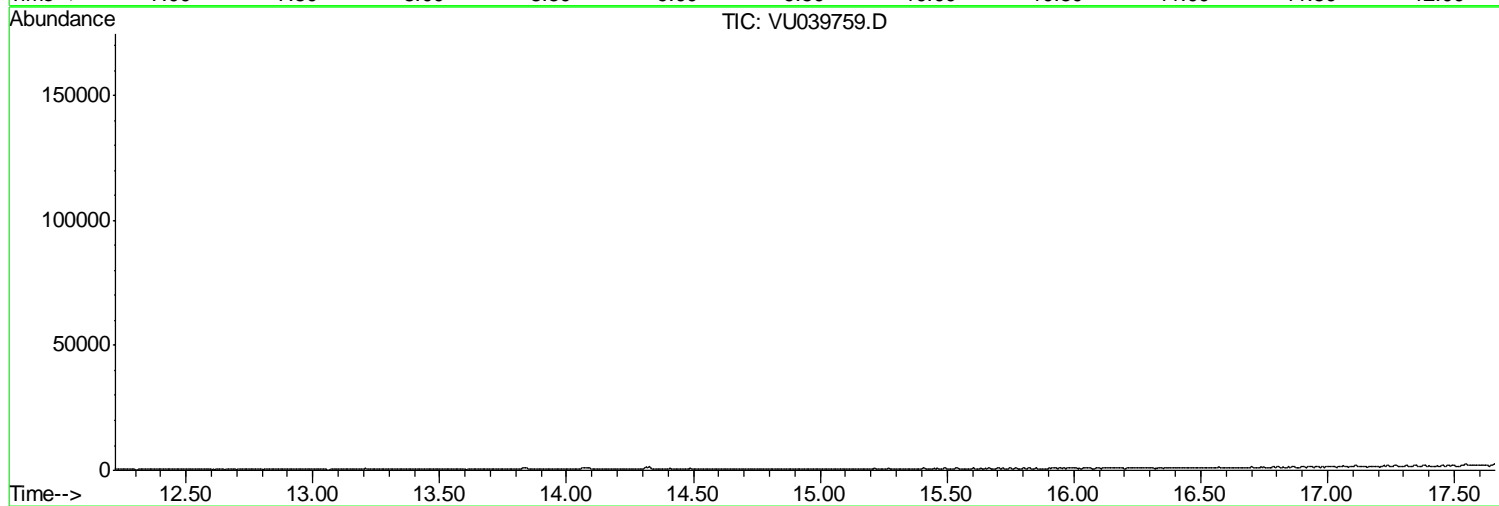
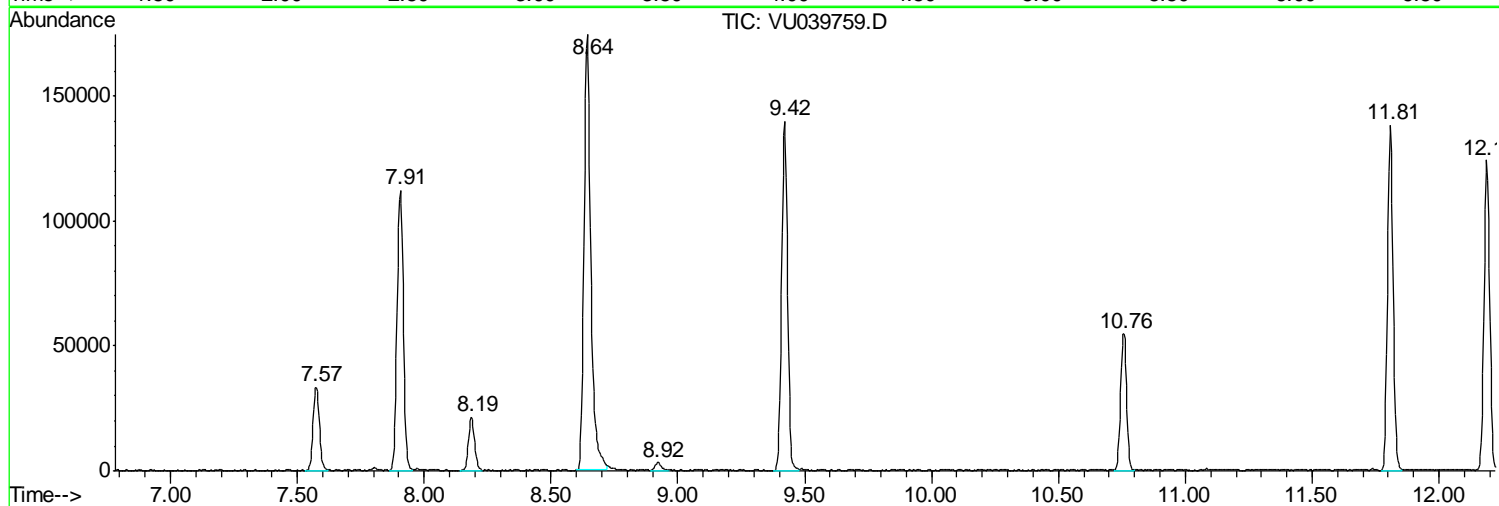
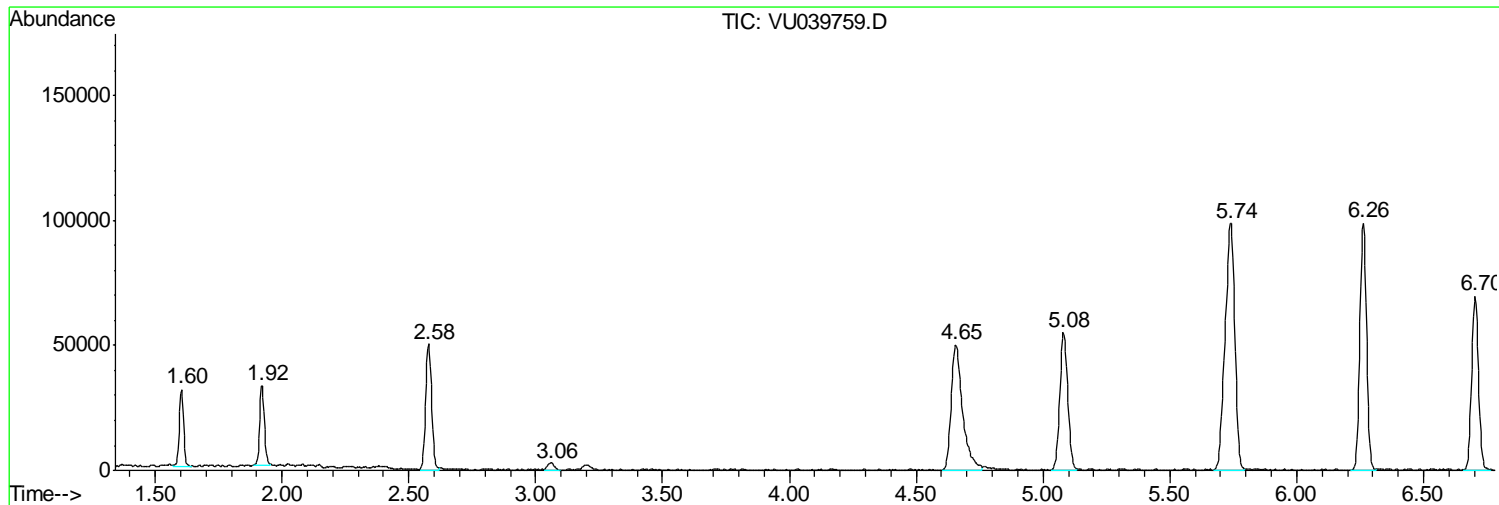
Sum of corrected areas: 2362797

Data Path : Z:\VOASRV\HPCHEM1\MSVOA U\DATA\VU080620\
Data File : VU039758.D
Acq On : 06 Aug 2020 16:10
Operator : SY/MD
Sample : VU0806WBL02
Misc : 25.0mL/MSVOA U/WATER
ALS Vial : 13 Sample Multiplier: 1

Instrument :
MSVOA_U
ClientSampled :
VBLK14

Quant Method : Z:\VOASRV\HPCHEM1\MSVOA_U\METHOD\SOMUTR080320WMA.M
Quant Title : TRACE VOA SOM01.0

TIC Library : C:\DATABASE\NIST11.L
TIC Integration Parameters: LSCINT.P



Data Path : Z:\VOASRV\HPCHEM1\MSVOA_U\DATA\VU080620\
Data File : VU039758.D
Acq On : 06 Aug 2020 16:10
Operator : SY/MD
Sample : VU0806WBL02
Misc : 25.0mL/MSVOA_U/WATER
ALS Vial : 13 Sample Multiplier: 1

Instrument :
MSVOA_U
ClientSampleId :
VBLK14

Quant Method : Z:\VOASRV\HPCHEM1\MSVOA_U\METHOD\SOMUTR080320WMA.M
Quant Title : TRACE VOA SOM01.0

TIC Library : C:\DATABASE\NIST11.L
TIC Integration Parameters: LSCINT.P

No Library Search Compounds Detected

Data Path : Z:\VOASRV\HPCHEM1\MSVOA_U\DATA\VU080620\
Data File : VU039758.D
Acq On : 06 Aug 2020 16:10
Operator : SY/MD
Sample : VU0806WBL02
Misc : 25.0mL/MSVOA_U/WATER
ALS Vial : 13 Sample Multiplier: 1

Instrument :
MSVOA_U
ClientSampleId :
VBLK14

Quant Method : Z:\VOASRV\HPCHEM1\MSVOA_U\METHOD\SOMUTR080320WMA.M
Quant Title : TRACE VOA SOM01.0

TIC Library : C:\DATABASE\NIST11.L
TIC Integration Parameters: LSCINT.P

TIC Top Hit name	RT	EstConc	Units	Response	--Internal Standard--			
					#	RT	Resp	Conc
