

Data Path : Z:\VOASRV\HPCHEM1\MSVOA_U\DATA\VU080620\
 Data File : VU039764.D
 Acq On : 06 Aug 2020 18:38
 Operator : SY/MD
 Sample : L3591-01
 Misc : 25.0mL/MSVOA_U/WATER
 ALS Vial : 19 Sample Multiplier: 1

Instrument :
 MSVOA_U
 ClientSampleId :
 BG0C3

Integration Parameters: rteint.p
 Integrator: RTE
 Smoothing : ON Filtering: 5
 Sampling : 1 Min Area: 3 % of largest Peak
 Start Thrs: 0.1 Max Peaks: 100
 Stop Thrs : 0 Peak Location: TOP

If leading or trailing edge < 100 prefer < Baseline drop else tangent >
 Peak separation: 5

Method : Z:\VOASRV\HPCHEM1\MSVOA_U\METHOD\SOMUTR080320WMA.M
 Title : TRACE VOA SOM01.0

Signal : TIC: VU039765.D

peak #	R.T. min	first scan	max scan	last scan	PK TY	peak height	corr. area	corr. % max.	% of total
1	1.604	72	82	94	rBV	32667	36576	11.58%	1.552%
2	1.919	172	180	194	rVB	31209	41273	13.06%	1.751%
3	2.578	374	385	399	rBV	50827	82801	26.21%	3.512%
4	4.646	1013	1028	1053	rBV	54415	136358	43.16%	5.784%
5	5.083	1146	1164	1186	rBV2	53352	118353	37.46%	5.021%
6	5.742	1348	1369	1387	rBV3	101001	259367	82.09%	11.002%
7	6.263	1517	1531	1551	rVB2	96915	181881	57.57%	7.715%
8	6.555	1610	1622	1633	rBV5	12120	21909	6.93%	0.929%
9	6.703	1655	1668	1686	rBV	67256	129195	40.89%	5.480%
10	7.575	1927	1939	1955	rVB3	31277	52948	16.76%	2.246%
11	7.906	2028	2042	2059	rBV	110067	186418	59.00%	7.908%
12	8.189	2118	2130	2142	rBV3	19595	32420	10.26%	1.375%
13	8.559	2235	2245	2257	rVB2	24894	41149	13.02%	1.746%
14	8.642	2257	2271	2300	rBV	174342	315943	100.00%	13.402%
15	9.420	2501	2513	2527	rBV	139615	230086	72.83%	9.760%
16	10.758	2917	2929	2943	rBV	54377	87558	27.71%	3.714%
17	11.809	3244	3256	3270	rVB	133267	211838	67.05%	8.986%
18	12.189	3362	3374	3388	rBV	120039	191291	60.55%	8.115%

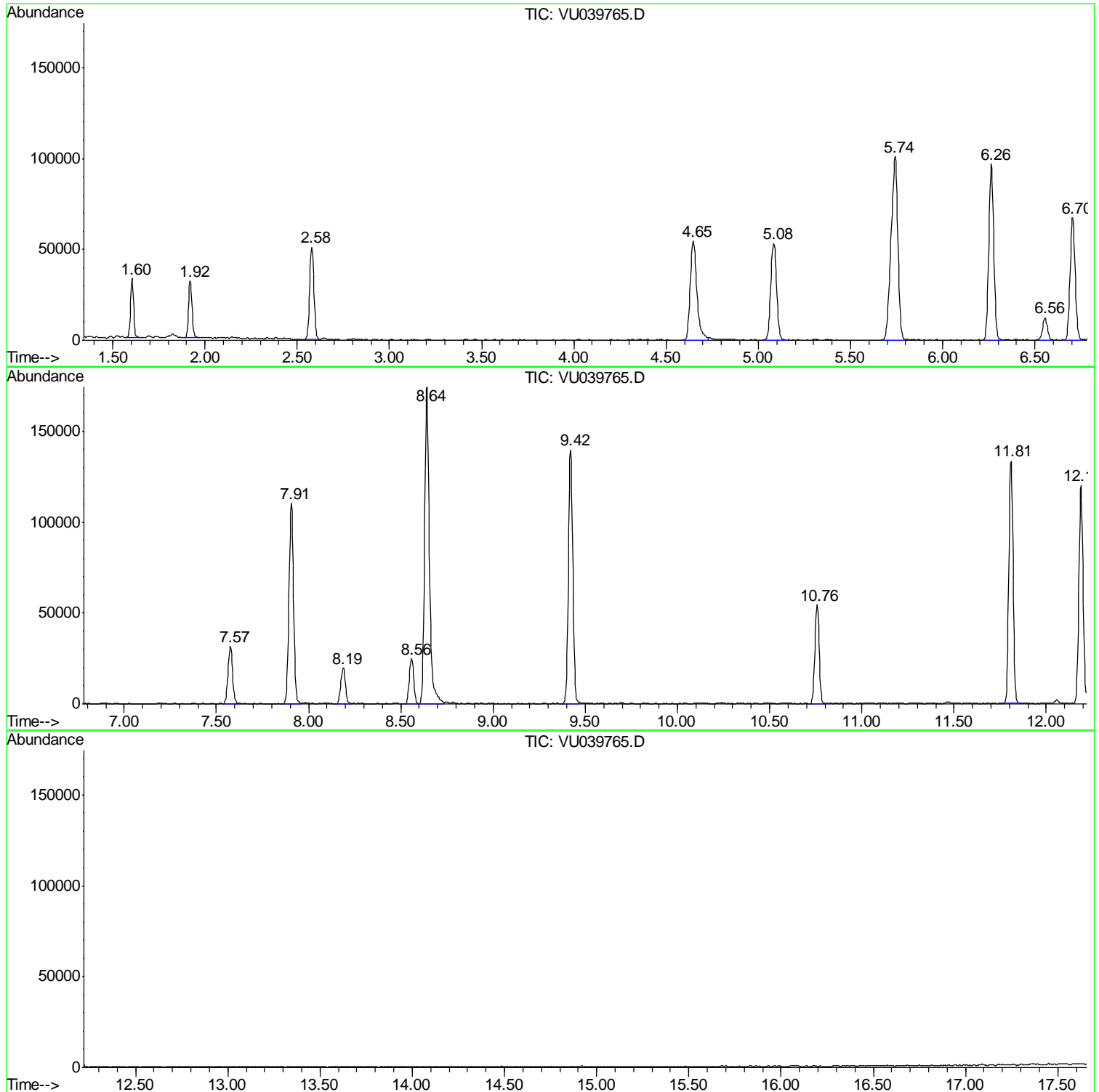
Sum of corrected areas: 2357364

Data Path : Z:\VOASRV\HPCHEM1\MSVOA_U\DATA\VU080620\
Data File : VU039764.D
Acq On : 06 Aug 2020 18:38
Operator : SY/MD
Sample : L3591-01
Misc : 25.0mL/MSVOA_U/WATER
ALS Vial : 19 Sample Multiplier: 1

Instrument :
MSVOA_U
ClientSampled :
BG0C3

Quant Method : Z:\VOASRV\HPCHEM1\MSVOA_U\METHOD\SOMUTR080320WMA.M
Quant Title : TRACE VOA SOM01.0

TIC Library : C:\DATABASE\NIST11.L
TIC Integration Parameters: LSCINT.P



Data Path : Z:\VOASRV\HPCHEM1\MSVOA_U\DATA\VU080620\
Data File : VU039764.D
Acq On : 06 Aug 2020 18:38
Operator : SY/MD
Sample : L3591-01
Misc : 25.0mL/MSVOA_U/WATER
ALS Vial : 19 Sample Multiplier: 1

Instrument :
MSVOA_U
ClientSampleId :
BG0C3

Quant Method : Z:\VOASRV\HPCHEM1\MSVOA_U\METHOD\SOMUTR080320WMA.M
Quant Title : TRACE VOA SOM01.0

TIC Library : C:\DATABASE\NIST11.L
TIC Integration Parameters: LSCINT.P

No Library Search Compounds Detected

Data Path : Z:\VOASRV\HPCHEM1\MSVOA_U\DATA\VU080620\
Data File : VU039764.D
Acq On : 06 Aug 2020 18:38
Operator : SY/MD
Sample : L3591-01
Misc : 25.0mL/MSVOA_U/WATER
ALS Vial : 19 Sample Multiplier: 1

Instrument :
MSVOA_U
ClientSampleId :
BG0C3

Quant Method : Z:\VOASRV\HPCHEM1\MSVOA_U\METHOD\SOMUTR080320WMA.M
Quant Title : TRACE VOA SOM01.0

TIC Library : C:\DATABASE\NIST11.L
TIC Integration Parameters: LSCINT.P

TIC Top Hit name	RT	EstConc	Units	Response	--Internal Standard--			
					#	RT	Resp	Conc
