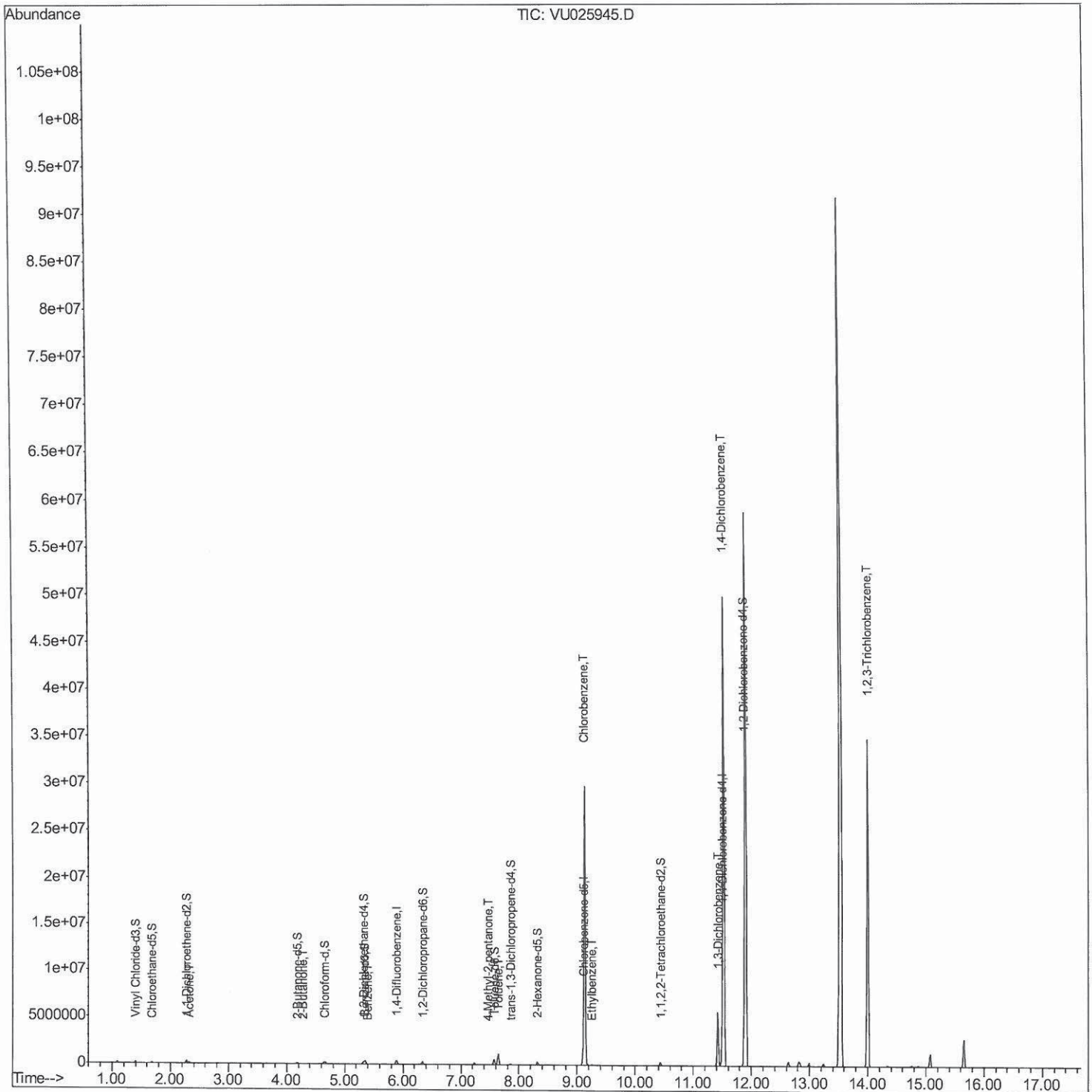


Data Path : Z:\voasrv\HPCHEM1\MSVOA U\Data\VU080718\  
 Data File : VU025945.D  
 Acq On : 07 Aug 2018 17:22  
 Operator : MD/SY  
 Sample : J4363-04  
 Misc : 5.0mL/MSVOA U/WATER  
 ALS Vial : 13 Sample Multiplier: 1

Instrument :  
 MSVOA\_U  
 Client Sampled :  
 A4ZA8

Manual Integrations  
**APPROVED**  
 apatel  
 8/9/2018 3:52:14 PM

Quant Time: Aug 08 09:37:33 2018  
 Quant Method : Z:\VOASRV\HPCHEM1\MSVOA\_U\METHOD\SOMULM080718WMA.M  
 Quant Title : VOC Analysis  
 QLast Update : Tue Aug 07 12:44:32 2018  
 Response via : Initial Calibration



Quantitation Report (Qedit)

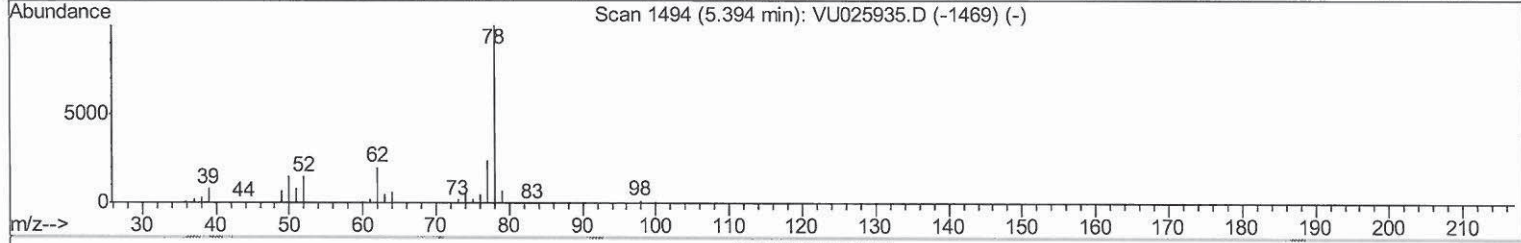
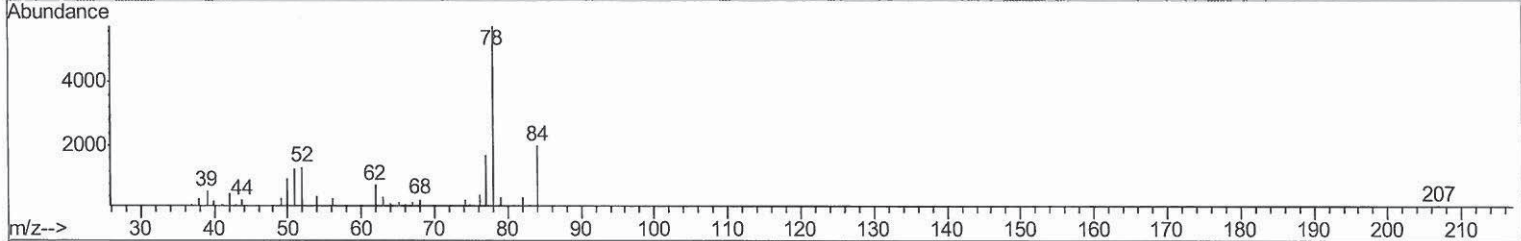
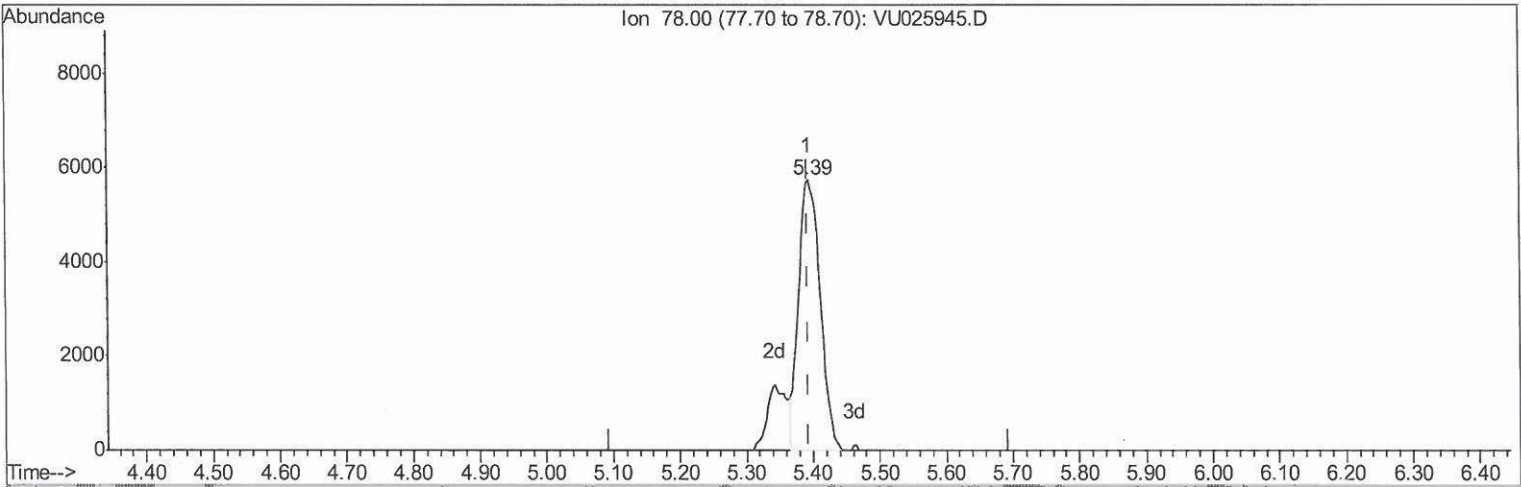
Data Path : Z:\voasrv\HPCHEM1\MSVOA\_U\Data\VU080718\  
 Data File : VU025945.D  
 Acq On : 07 Aug 2018 17:22  
 Operator : MD/SY  
 Sample : J4363-04  
 Misc : 5.0mL/MSVOA\_U/WATER  
 ALS Vial : 13 Sample Multiplier: 1

**Instrument :**  
 MSVOA\_U  
**ClientSampled :**  
 A4ZA8

**Manual Integrations**  
**APPROVED**

apatel  
 8/9/2018 3:52:14 PM

Quant Time: Aug 08 04:22:30 2018  
 Quant Method : Z:\VOASRV\HPCHEM1\MSVOA\_U\METHOD\SOMULM080718WMA.M  
 Quant Title : VOC Analysis  
 QLast Update : Tue Aug 07 12:44:32 2018  
 Response via : Initial Calibration



TIC: VU025945.D

(33) Benzene (T)  
 5.394min (+0.000) 1.41ug/L  
 response 13005

Ion	Exp%	Act%
78.00	100	100
0.00	0.00	0.00
0.00	0.00	0.00
0.00	0.00	0.00

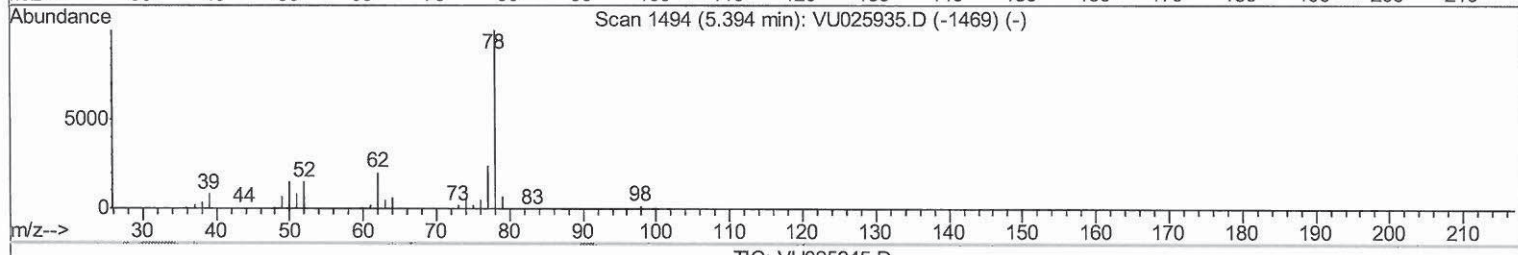
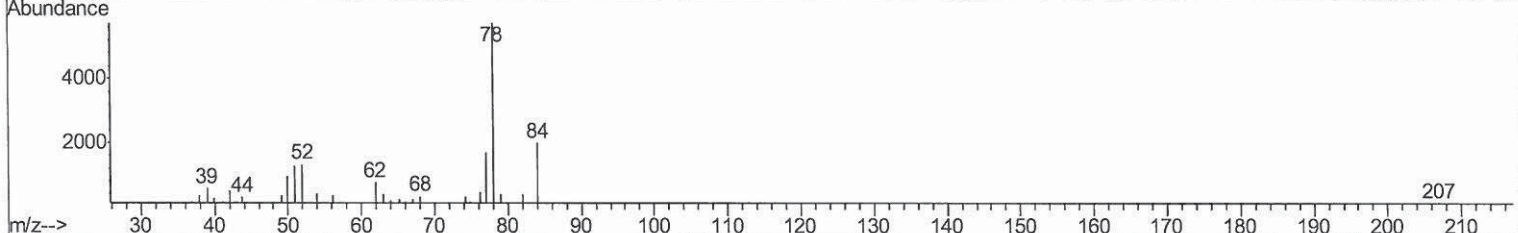
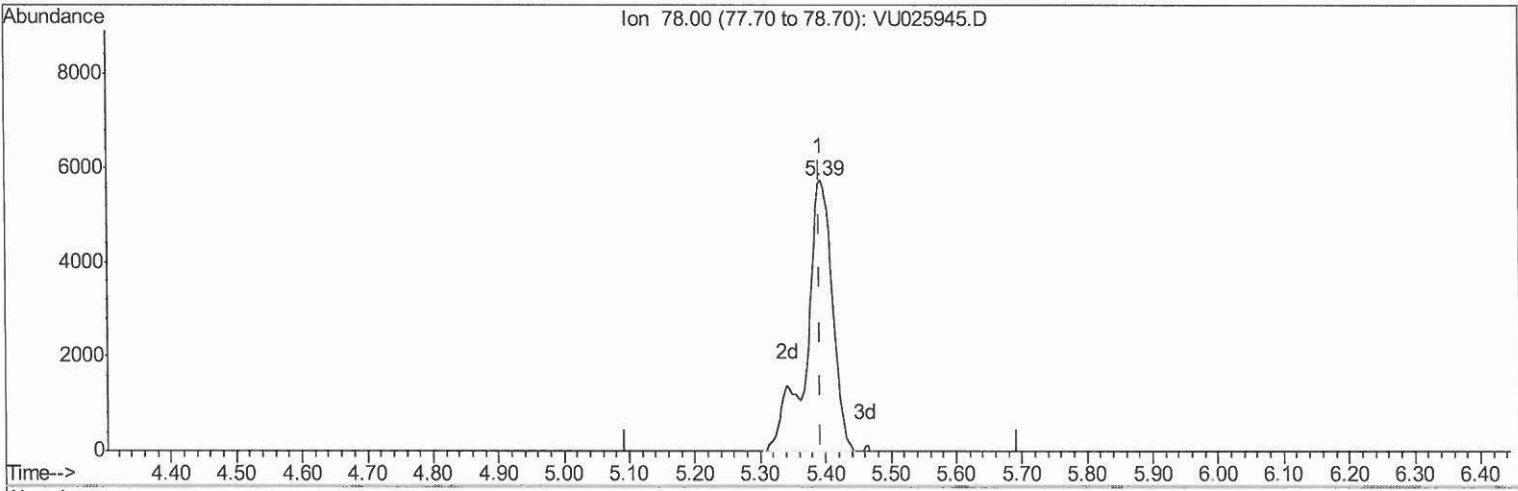
Quantitation Report (Qedit)

Data Path : Z:\voasrv\HPCHEM1\MSVOA\_U\Data\VU080718\  
 Data File : VU025945.D  
 Acq On : 07 Aug 2018 17:22  
 Operator : MD/SY  
 Sample : J4363-04  
 Misc : 5.0mL/MSVOA\_U/WATER  
 ALS Vial : 13 Sample Multiplier: 1

**Instrument :**  
 MSVOA\_U  
**Client Sampled :**  
 A4ZA8

**Manual Integrations**  
**APPROVED**  
 apatel  
 8/9/2018 3:52:14 PM

Quant Time: Aug 08 04:22:30 2018  
 Quant Method : Z:\VOASRV\HPCHEM1\MSVOA\_U\METHOD\SOMULM080718WMA.M  
 Quant Title : VOC Analysis  
 QLast Update : Tue Aug 07 12:44:32 2018  
 Response via : Initial Calibration



TIC: VU025945.D

(33) Benzene (T)  
 5.394min (+0.000) 1.72ug/L m  
 response 15891

Ion	Exp%	Act%
78.00	100	100
0.00	0.00	0.00
0.00	0.00	0.00
0.00	0.00	0.00

*MD*  
*08/10/18*

Quantitation Report (Qedit)

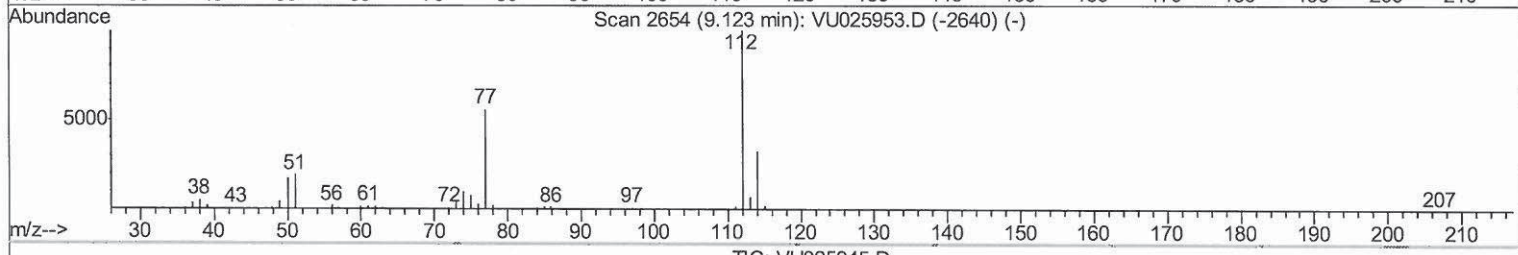
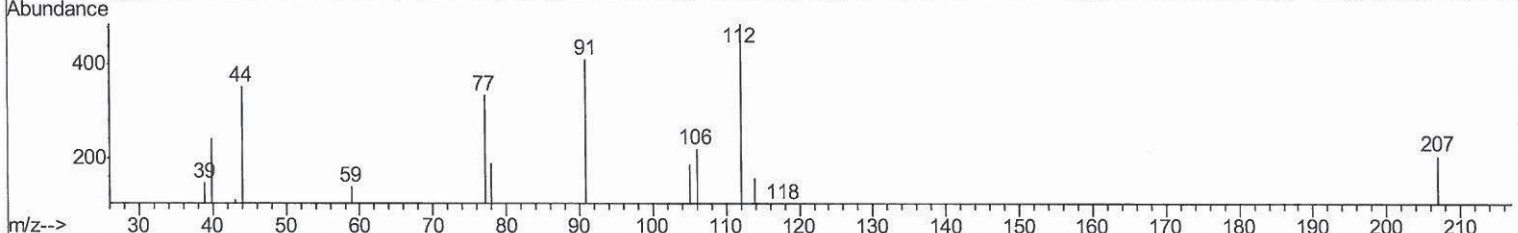
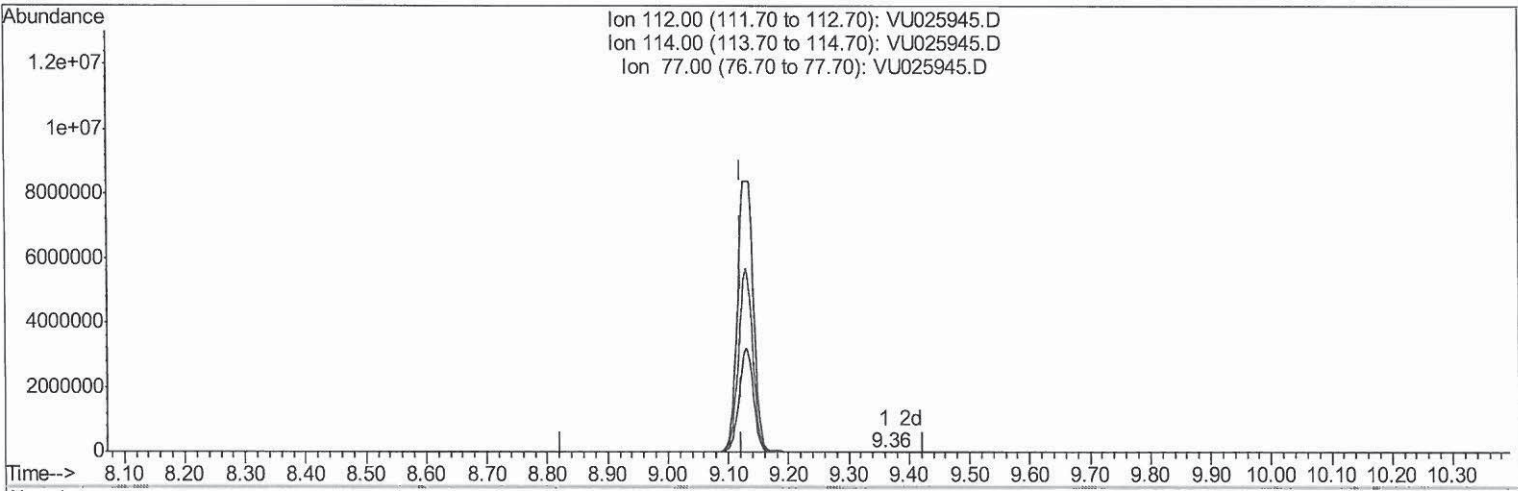
Data Path : Z:\voasrv\HPCHEM1\MSVOA U\Data\VU080718\  
 Data File : VU025945.D  
 Acq On : 07 Aug 2018 17:22  
 Operator : MD/SY  
 Sample : J4363-04  
 Misc : 5.0mL/MSVOA U/WATER  
 ALS Vial : 13 Sample Multiplier: 1

**Instrument :**  
 MSVOA\_U  
**ClientSampled :**  
 A4ZA8

**Manual Integrations**  
**APPROVED**

apatel  
 8/9/2018 3:52:14 PM

Quant Time: Aug 08 05:12:02 2018  
 Quant Method : Z:\VOASRV\HPCHEM1\MSVOA\_U\METHOD\SOMULM080718WMA.M  
 Quant Title : VOC Analysis  
 QLast Update : Tue Aug 07 12:44:32 2018  
 Response via : Initial Calibration



TIC: VU025945.D

(51) Chlorobenzene (T)  
 9.361min (+0.238) 0.04ug/L  
 response 296

Ion	Exp%	Act%
112.00	100	100
114.00	32.20	32.24
77.00	57.30	68.38
0.00	0.00	0.00

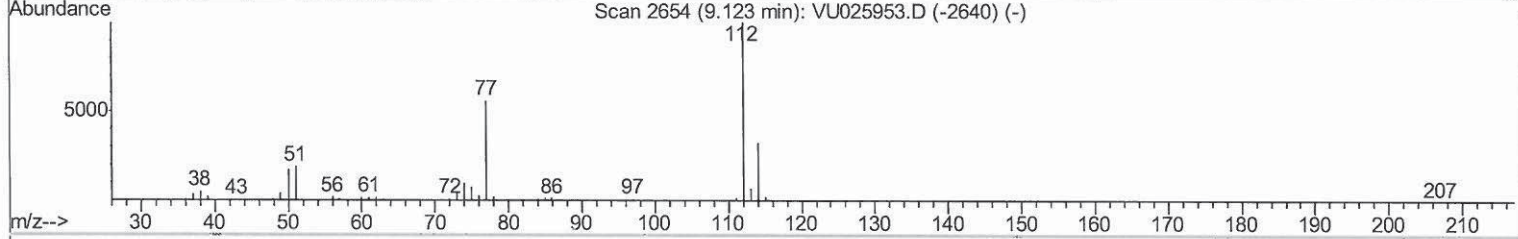
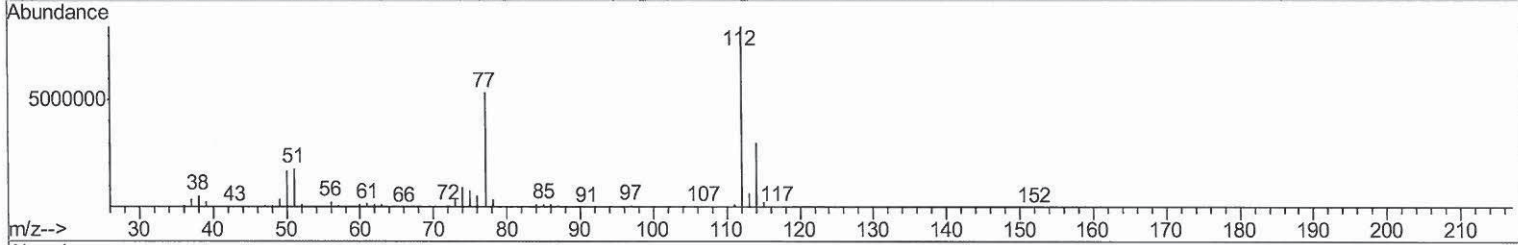
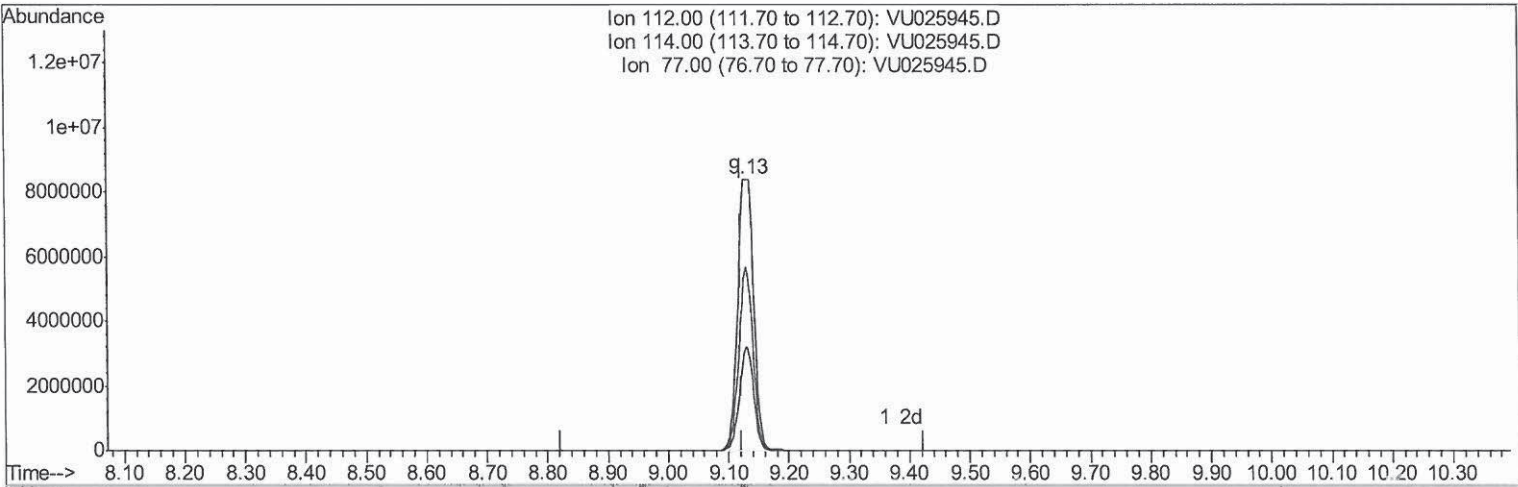
Quantitation Report (Qedit)

Data Path : Z:\voasrv\HPCHEM1\MSVOA U\Data\VU080718\  
 Data File : VU025945.D  
 Acq On : 07 Aug 2018 17:22  
 Operator : MD/SY  
 Sample : J4363-04  
 Misc : 5.0mL/MSVOA U/WATER  
 ALS Vial : 13 Sample Multiplier: 1

**Instrument :**  
 MSVOA\_U  
**Client Sampled :**  
 A4ZA8

**Manual Integrations**  
**APPROVED**  
 apatel  
 8/9/2018 3:52:14 PM

Quant Time: Aug 08 05:12:02 2018  
 Quant Method : Z:\VOASRV\HPCHEM1\MSVOA\_U\METHOD\SOMULM080718WMA.M  
 Quant Title : VOC Analysis  
 QLast Update : Tue Aug 07 12:44:32 2018  
 Response via : Initial Calibration



TIC: VU025945.D

(51) Chlorobenzene (T)

9.127min (+0.003) 2241.20ug/L m

response 15461517

*> 100*  
*08/10/18*

Ion	Exp%	Act%
112.00	100	100
114.00	32.20	35.60
77.00	57.30	63.64
0.00	0.00	0.00

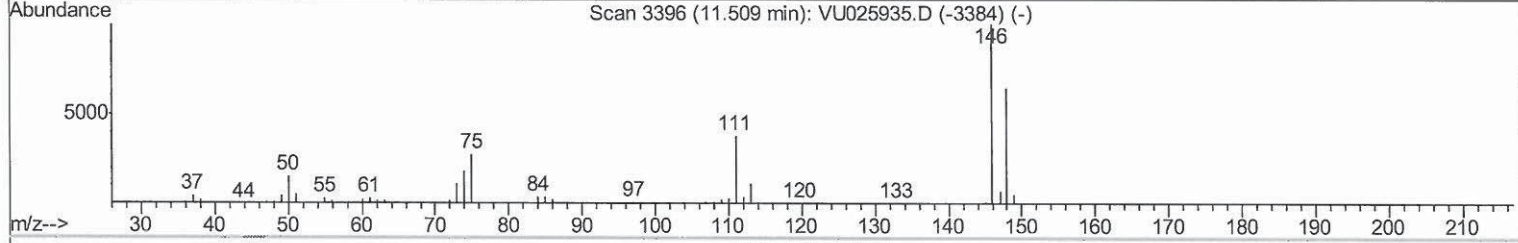
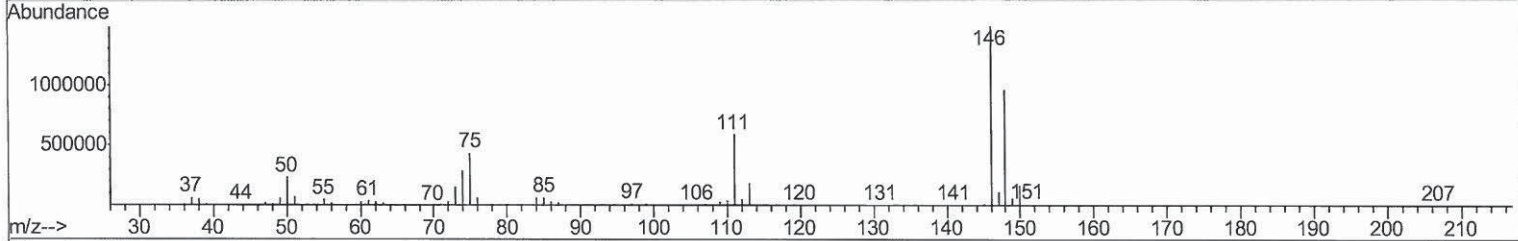
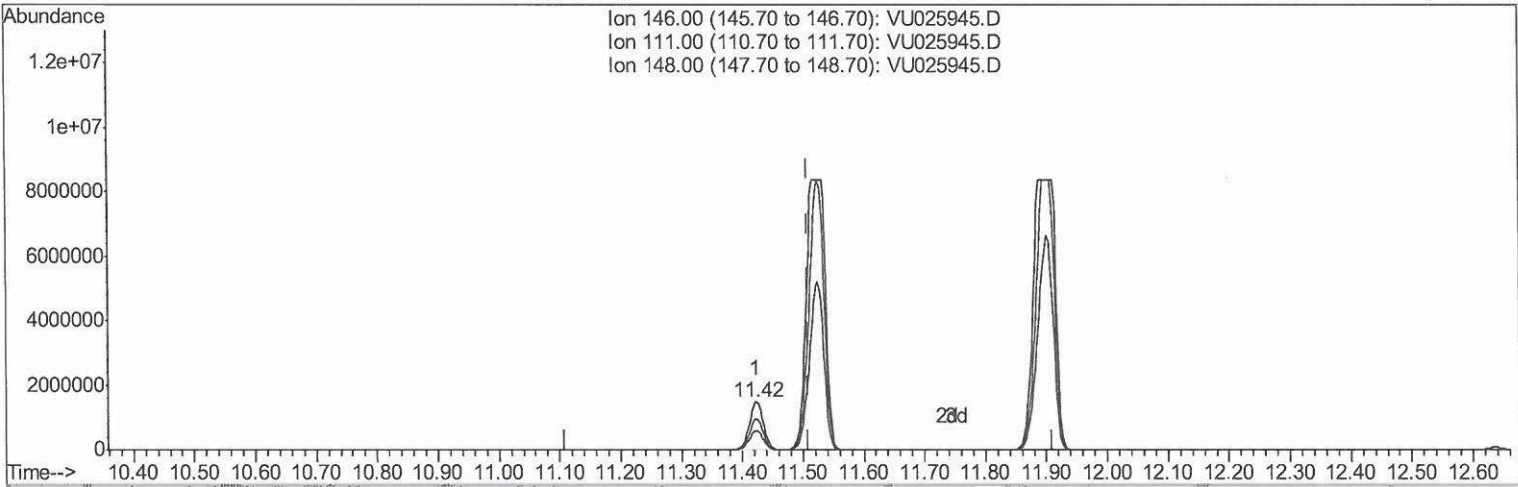
Quantitation Report (Qedit)

Data Path : Z:\voasrv\HPCHEM1\MSVOA\_U\Data\VU080718\  
 Data File : VU025945.D  
 Acq On : 07 Aug 2018 17:22  
 Operator : MD/SY  
 Sample : J4363-04  
 Misc : 5.0mL/MSVOA\_U/WATER  
 ALS Vial : 13 Sample Multiplier: 1

**Instrument :**  
 MSVOA\_U  
**ClientSampled :**  
 A4ZA8

**Manual Integrations**  
**APPROVED**  
 apatel  
 8/9/2018 3:52:14 PM

Quant Time: Aug 08 04:22:30 2018  
 Quant Method : Z:\VOASRV\HPCHEM1\MSVOA\_U\METHOD\SOMULM080718WMA.M  
 Quant Title : VOC Analysis  
 QLast Update : Tue Aug 07 12:44:32 2018  
 Response via : Initial Calibration



TIC: VU025945.D

(63) 1,4-Dichlorobenzene (T)  
 11.422min (-0.087) 349.75ug/L  
 response 2335599

Ion	Exp%	Act%
146.00	100	100
111.00	38.40	39.43
148.00	63.70	64.34
0.00	0.00	0.00

Quantitation Report (Qedit)

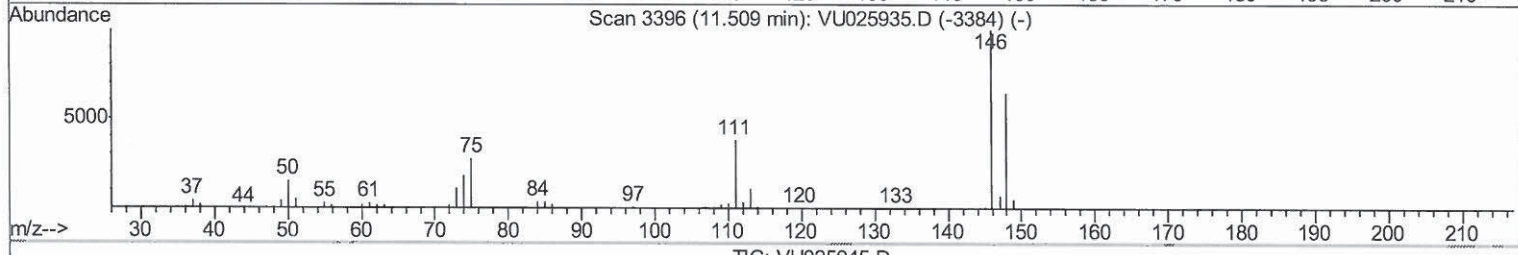
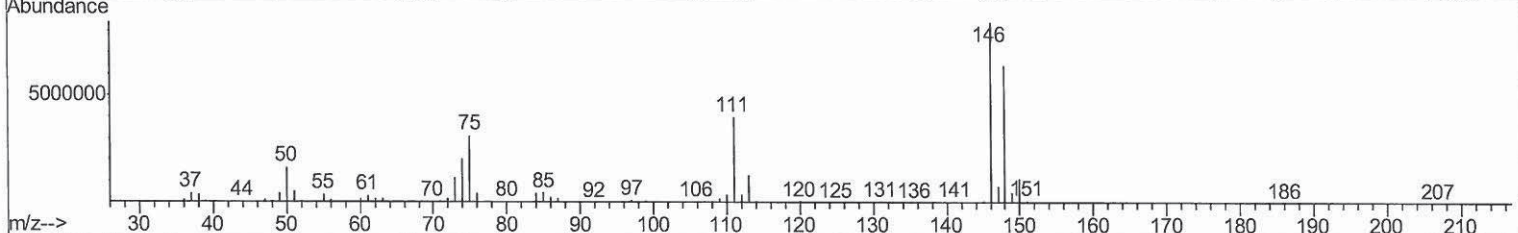
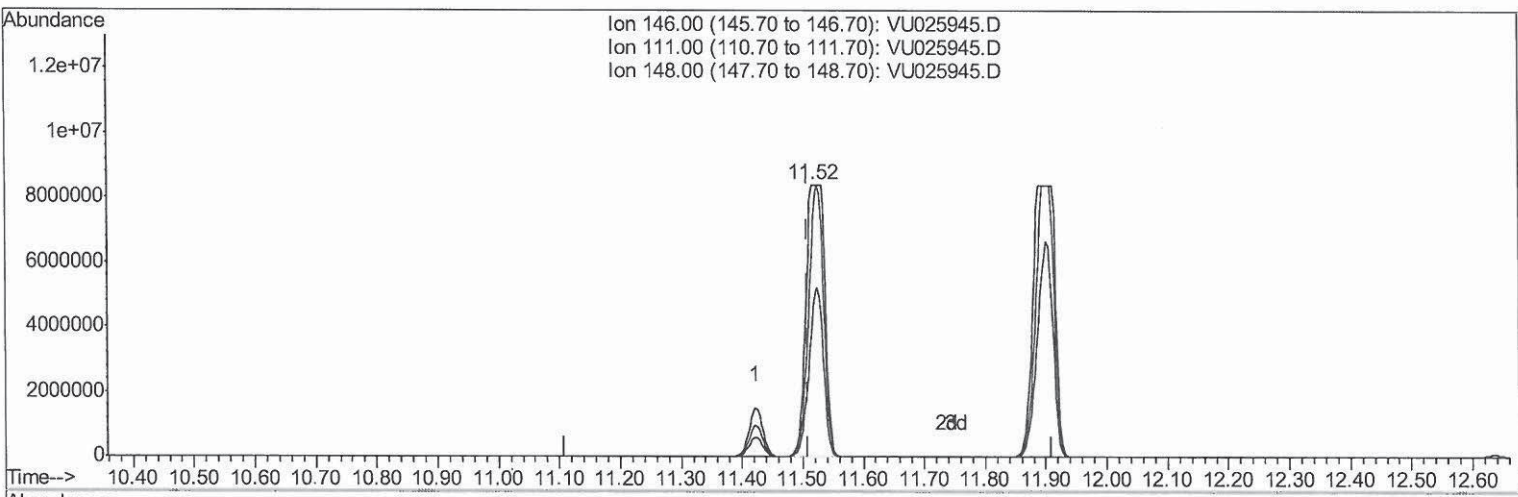
Data Path : Z:\voasrv\HPCHEM1\MSVOA\_U\Data\VU080718\  
 Data File : VU025945.D  
 Acq On : 07 Aug 2018 17:22  
 Operator : MD/SY  
 Sample : J4363-04  
 Misc : 5.0mL/MSVOA\_U/WATER  
 ALS Vial : 13 Sample Multiplier: 1

**Instrument :**  
 MSVOA\_U  
**ClientSampled :**  
 A4ZA8

**Manual Integrations**  
**APPROVED**

apatel  
 8/9/2018 3:52:14 PM

Quant Time: Aug 08 04:22:30 2018  
 Quant Method : Z:\VOASRV\HPCHEM1\MSVOA\_U\METHOD\SOMULM080718WMA.M  
 Quant Title : VOC Analysis  
 QLast Update : Tue Aug 07 12:44:32 2018  
 Response via : Initial Calibration



(63) 1,4-Dichlorobenzene (T)  
 11.516min (+0.006) 2726.78ug/L m  
 response 18208938

*MD*  
*08/10/18*

Ion	Exp%	Act%
146.00	100	100
111.00	38.40	47.29
148.00	63.70	76.08
0.00	0.00	0.00

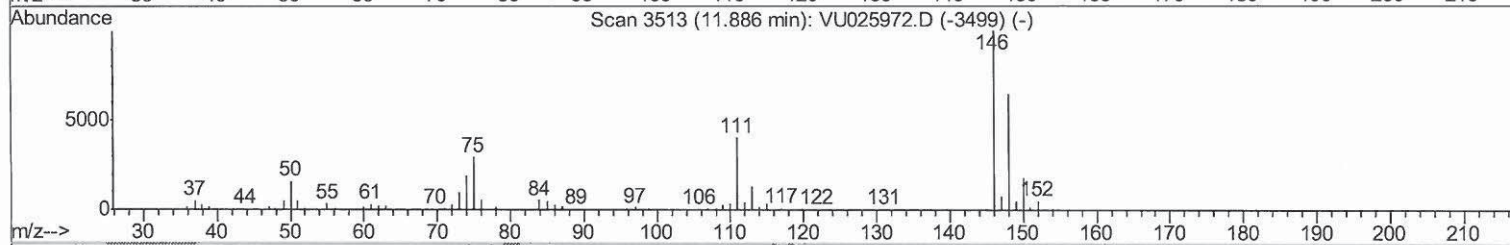
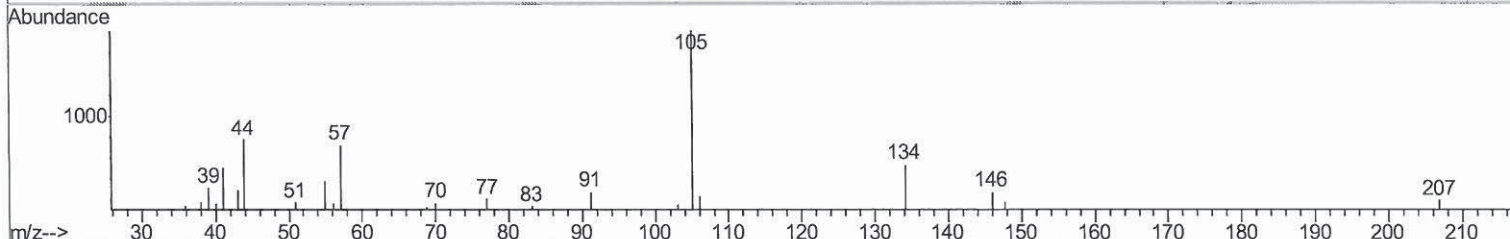
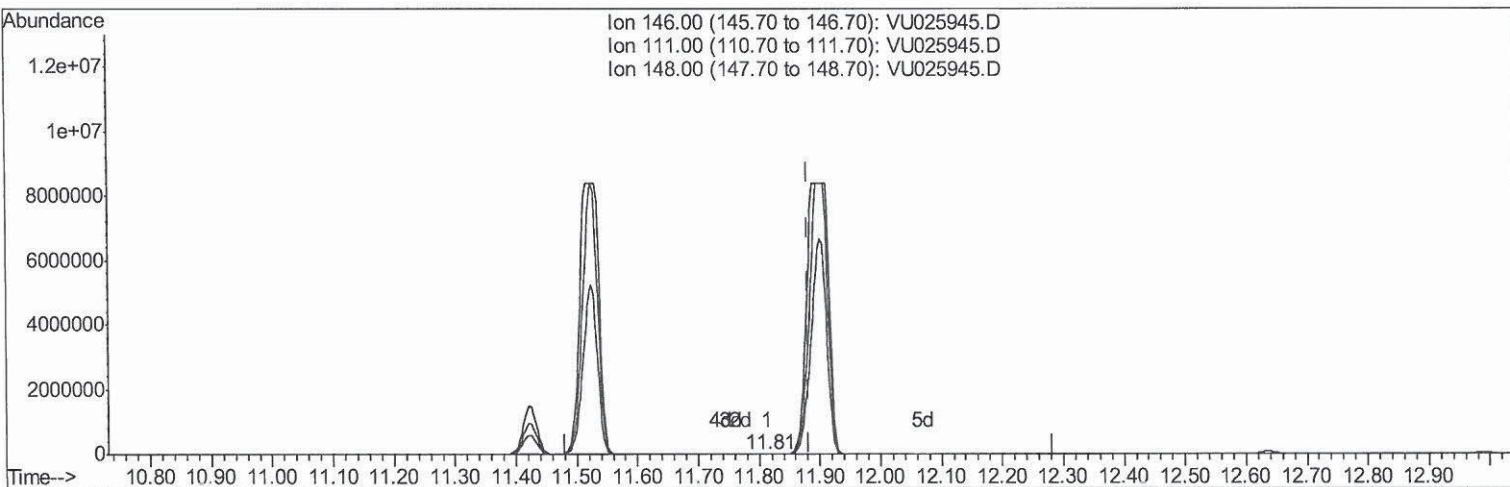
Quantitation Report (Qedit)

Data Path : Z:\voasrv\HPCHEM1\MSVOA\_U\Data\VU080718\  
 Data File : VU025945.D  
 Acq On : 07 Aug 2018 17:22  
 Operator : MD/SY  
 Sample : J4363-04  
 Misc : 5.0mL/MSVOA\_U/WATER  
 ALS Vial : 13 Sample Multiplier: 1

**Instrument :**  
 MSVOA\_U  
**ClientSampled :**  
 A4ZA8

**Manual Integrations**  
**APPROVED**  
 apatel  
 8/9/2018 3:52:14 PM

Quant Time: Aug 08 09:37:33 2018  
 Quant Method : Z:\VOASRV\HPCHEM1\MSVOA\_U\METHOD\SOMULM080718WMA.M  
 Quant Title : VOC Analysis  
 QLast Update : Tue Aug 07 12:44:32 2018  
 Response via : Initial Calibration



TIC: VU025945.D

(65) 1,2-Dichlorobenzene (T)

11.815min (-0.067) 0.01ug/L

response 59

Ion	Exp%	Act%
146.00	100	100
111.00	40.50	0.00#
148.00	63.40	65.68
0.00	0.00	0.00



Quantitation Report (Qedit)

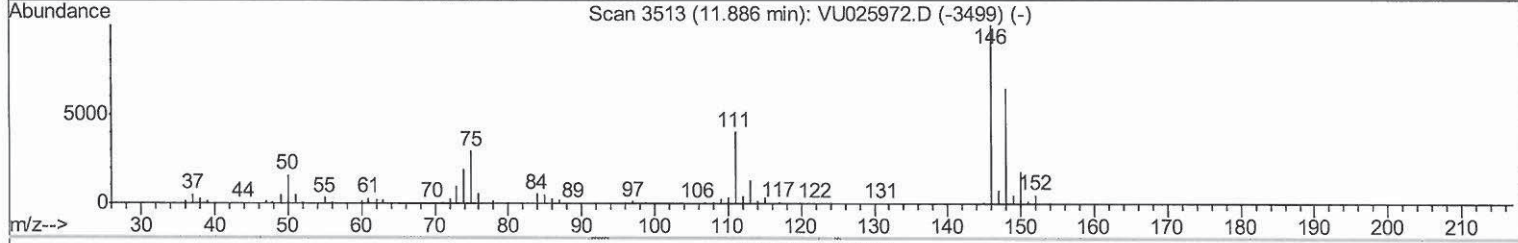
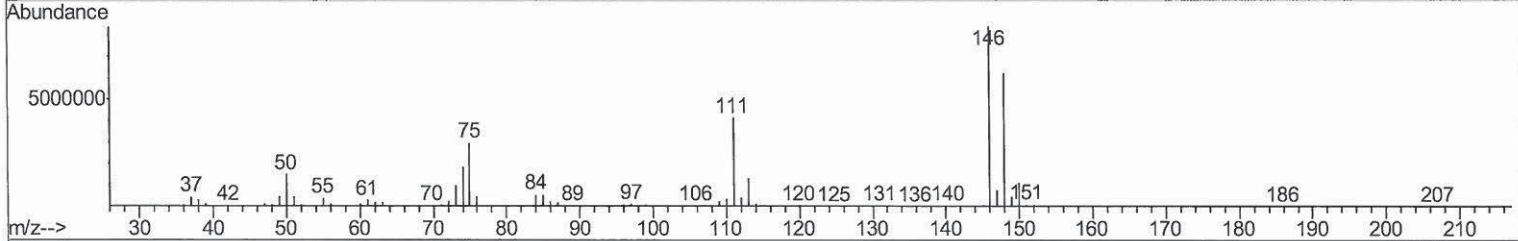
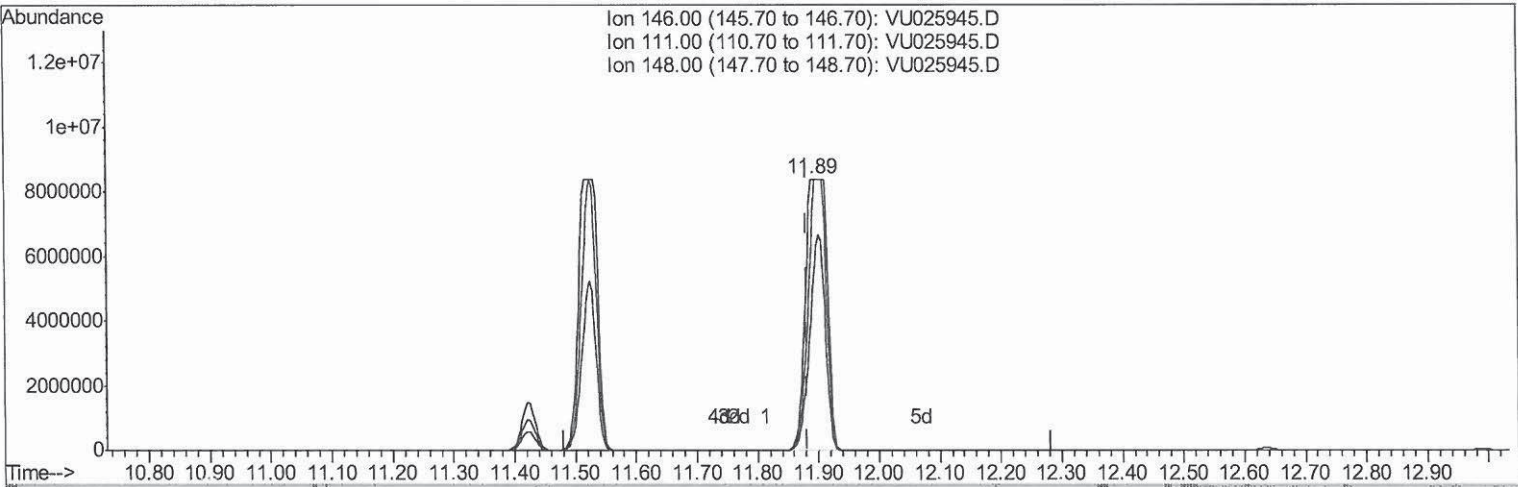
Data Path : Z:\voasrv\HPCHEM1\MSVOA\_U\Data\VU080718\  
 Data File : VU025945.D  
 Acq On : 07 Aug 2018 17:22  
 Operator : MD/SY  
 Sample : J4363-04  
 Misc : 5.0mL/MSVOA\_U/WATER  
 ALS Vial : 13 Sample Multiplier: 1

Instrument :  
 MSVOA\_U  
 ClientSampled :  
 A4ZA8

Manual Integrations  
 APPROVED

apatel  
 8/9/2018 3:52:14 PM

Quant Time: Aug 08 09:37:33 2018  
 Quant Method : Z:\VOASRV\HPCHEM1\MSVOA\_U\METHOD\SOMULM080718WMA.M  
 Quant Title : VOC Analysis  
 QLast Update : Tue Aug 07 12:44:32 2018  
 Response via : Initial Calibration



TIC: VU025945.D

(65) 1,2-Dichlorobenzene (T)

11.889min (+0.006) 3202.26ug/L m

response 21046117

*MD*  
 8/10/18

Ion	Exp%	Act%
146.00	100	100
111.00	40.50	49.04#
148.00	63.40	73.76
0.00	0.00	0.00

Quantitation Report (Qedit)

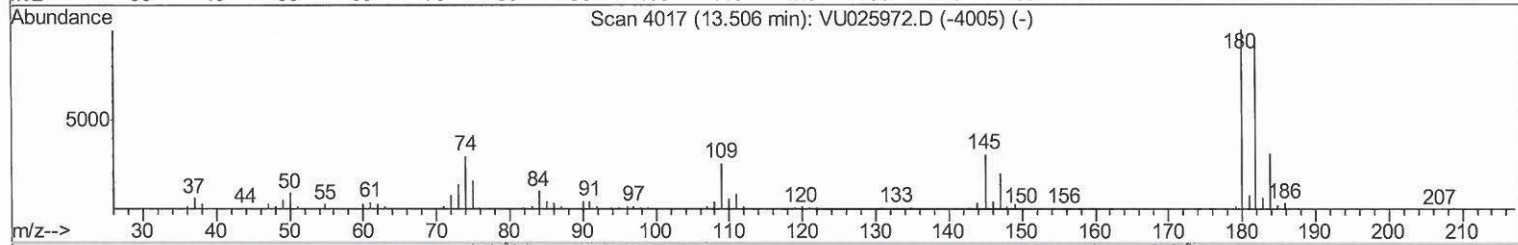
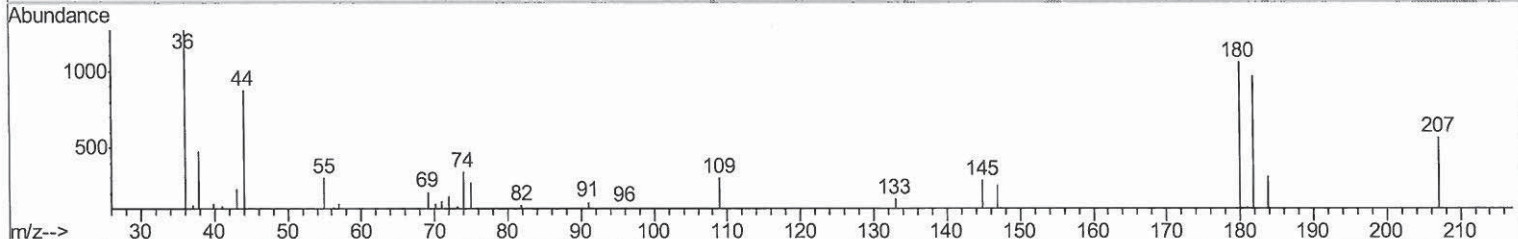
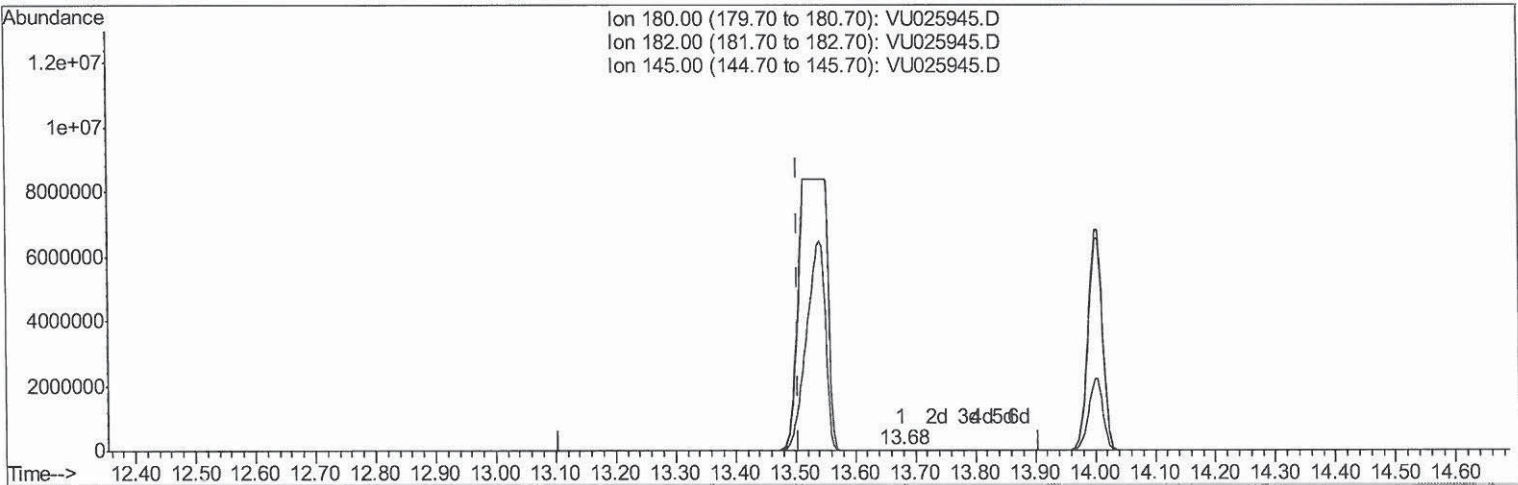
Data Path : Z:\voasrv\HPCHEM1\MSVOA\_U\Data\VU080718\  
 Data File : VU025945.D  
 Acq On : 07 Aug 2018 17:22  
 Operator : MD/SY  
 Sample : J4363-04  
 Misc : 5.0mL/MSVOA\_U/WATER  
 ALS Vial : 13 Sample Multiplier: 1

**Instrument :**  
 MSVOA\_U  
**ClientSampleId :**  
 A4ZA8

**Manual Integrations**  
**APPROVED**

apatel  
 8/9/2018 3:52:14 PM

Quant Time: Aug 08 09:37:33 2018  
 Quant Method : Z:\VOASRV\HPCHEM1\MSVOA\_U\METHOD\SOMULM080718WMA.M  
 Quant Title : VOC Analysis  
 QLast Update : Tue Aug 07 12:44:32 2018  
 Response via : Initial Calibration



TIC: VU025945.D

(68) 1,2,4-trichlorobenzene (T)

13.676min (+0.170) 0.06ug/L

response 249

Ion	Exp%	Act%
180.00	100	100
182.00	97.60	56.63#
145.00	29.30	22.09#
0.00	0.00	0.00

Quantitation Report (Qedit)

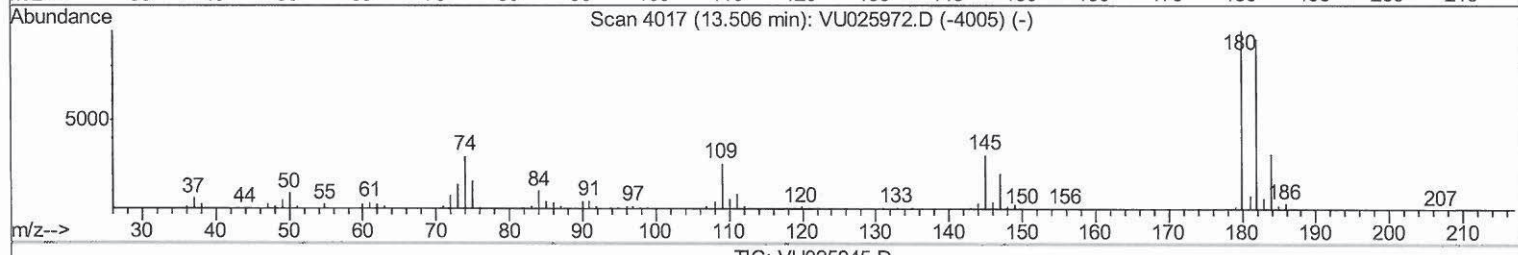
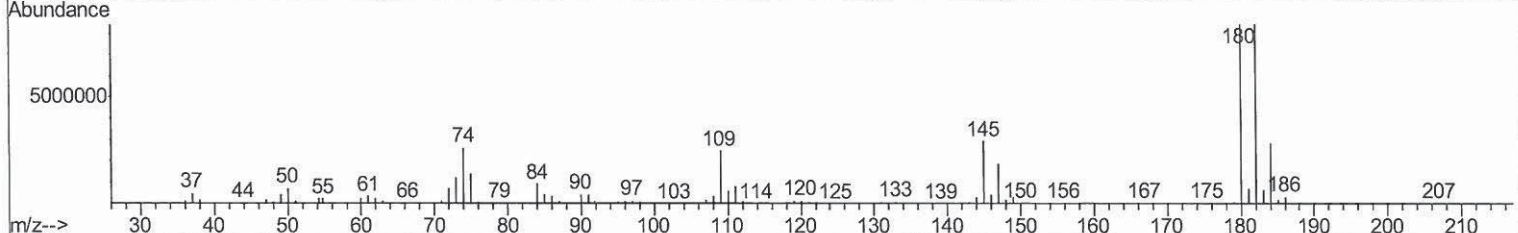
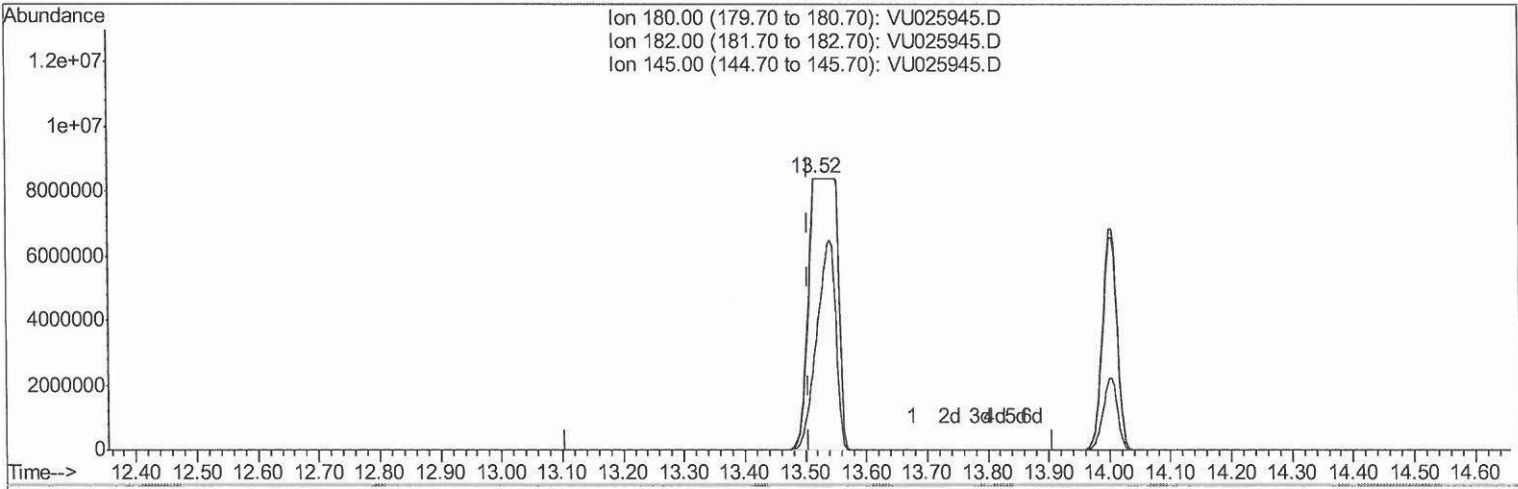
Data Path : Z:\voasrv\HPCHEM1\MSVOA\_U\Data\VU080718\  
 Data File : VU025945.D  
 Acq On : 07 Aug 2018 17:22  
 Operator : MD/SY  
 Sample : J4363-04  
 Misc : 5.0mL/MSVOA\_U/WATER  
 ALS Vial : 13 Sample Multiplier: 1

Instrument :  
 MSVOA\_U  
 Client Sampled :  
 A4ZA8

Manual Integrations  
 APPROVED

apatel  
 8/9/2018 3:52:14 PM

Quant Time: Aug 08 09:37:33 2018  
 Quant Method : Z:\VOASRV\HPCHEM1\MSVOA\_U\METHOD\SOMULM080718WMA.M  
 Quant Title : VOC Analysis  
 QLast Update : Tue Aug 07 12:44:32 2018  
 Response via : Initial Calibration



TIC: VU025945.D

(68) 1,2,4-trichlorobenzene (T)

13.516min (+0.010) 6639.41ug/L m *7179*  
 response 27831048 *08/10/18*

Ion	Exp%	Act%
180.00	100	100
182.00	97.60	0.00#
145.00	29.30	0.00#
0.00	0.00	0.00

Data Path : Z:\voasrv\HPCHEM1\MSVOA\_U\Data\U080718\  
 Data File : VU025945.D  
 Acq On : 07 Aug 2018 17:22  
 Operator : MD/SY  
 Sample : J4363-04  
 Misc : 5.0mL/MSVOA\_U/WATER  
 ALS Vial : 13 Sample Multiplier: 1

**Instrument :**  
 MSVOA\_U  
**Client Sampled :**  
 A4ZA8

**Manual Integrations**  
**APPROVED**  
 apatel  
 8/9/2018 3:52:14 PM

Quant Time: Aug 09 02:11:19 2018  
 Quant Method : Z:\VOASRV\HPCHEM1\MSVOA\_U\METHOD\SOMULM080718WMA.M  
 Quant Title : VOC Analysis  
 QLast Update : Tue Aug 07 12:44:32 2018  
 Response via : Initial Calibration

Internal Standards	R.T.	QIon	Response	Conc	Units	Dev (Min)
1) 1,4-Difluorobenzene	5.89	114	364215	50.00	ug/L	0.00
28) Chlorobenzene-d5	9.10	117	353183	50.00	ug/L	0.00
60) 1,4-Dichlorobenzene-d4	11.49	152	219084	50.00	ug/L	0.00

System Monitoring Compounds

4) Vinyl Chloride-d3	1.40	65	98809	48.96	ug/L	0.00
Spiked Amount	50.000	Range	60 - 135	Recovery	=	97.92%
7) Chloroethane-d5	1.68	69	76855	50.78	ug/L	0.00
Spiked Amount	50.000	Range	70 - 130	Recovery	=	101.56%
11) 1,1-Dichloroethene-d2	2.27	63	140884	36.04	ug/L	0.00
Spiked Amount	50.000	Range	60 - 125	Recovery	=	72.08%
21) 2-Butanone-d5	4.18	46	155991	112.33	ug/L	0.00
Spiked Amount	100.000	Range	40 - 130	Recovery	=	112.33%
24) Chloroform-d	4.65	84	193960	49.64	ug/L	0.00
Spiked Amount	50.000	Range	70 - 125	Recovery	=	99.28%
26) 1,2-Dichloroethane-d4	5.31	65	132290	51.30	ug/L	0.00
Spiked Amount	50.000	Range	70 - 125	Recovery	=	102.60%
32) Benzene-d6	5.35	84	389312	50.01	ug/L	0.00
Spiked Amount	50.000	Range	70 - 125	Recovery	=	100.02%
36) 1,2-Dichloropropane-d6	6.34	67	121278	50.11	ug/L	0.00
Spiked Amount	50.000	Range	70 - 120	Recovery	=	100.22%
41) Toluene-d8	7.57	98	367841	48.70	ug/L	0.00
Spiked Amount	50.000	Range	80 - 120	Recovery	=	97.40%
43) trans-1,3-Dichloropropene-	7.85	79	64019	50.44	ug/L	0.00
Spiked Amount	50.000	Range	60 - 125	Recovery	=	100.88%
47) 2-Hexanone-d5	8.31	63	110422	109.63	ug/L	0.00
Spiked Amount	100.000	Range	45 - 130	Recovery	=	109.63%
57) 1,1,2,2-Tetrachloroethane-	10.44	84	172464	51.44	ug/L	0.00
Spiked Amount	50.000	Range	65 - 120	Recovery	=	102.88%
64) 1,2-Dichlorobenzene-d4	11.88	152	184738	51.04	ug/L	0.01
Spiked Amount	50.000	Range	80 - 120	Recovery	=	102.08%

Target Compounds

	R.T.	QIon	Response	Conc	Units	Qvalue
13) Acetone	2.32	43	136254	82.883	ug/L	99
22) 2-Butanone	4.27	43	55749	27.124	ug/L	99
33) Benzene	5.39	78	15891m	1.721	ug/L	96 MD 08/10/18
40) 4-Methyl-2-pentanone	7.47	43	5986	1.780	ug/L	
42) Toluene	7.64	91	819105	81.302	ug/L	
51) Chlorobenzene	9.13	112	15461517m	2241.203	ug/L	
52) Ethylbenzene	9.26	91	37485	3.270	ug/L	
62) 1,3-Dichlorobenzene	11.42	146	2335599	356.329	ug/L	99
63) 1,4-Dichlorobenzene	11.52	146	18208938m	2726.777	ug/L	
65) 1,2-Dichlorobenzene	11.89	146	21046117m	3202.259	ug/L	
68) 1,2,4-trichlorobenzene	13.52	180	27831048m	6639.413	ug/L	
70) 1,2,3-Trichlorobenzene	14.00	180	11337006	2639.751	ug/L	100

(#) = qualifier out of range (m) = manual integration (+) = signals summed