

Data Path : Z:\VOASRV\HPCHEM1\MSVOA U\DATA\VU080718\
 Data File : VU025959.D
 Acq On : 08 Aug 2018 00:07
 Operator : MD/SY
 Sample : J4361-14
 Misc : 5.0mL/MSVOA U/WATER
 ALS Vial : 29 Sample Multiplier: 1

Instrument :
 MSVOA_U
 Client Sampled :
 A4ZC9

Quant Time: Aug 08 06:59:53 2018
 Quant Method : Z:\VOASRV\HPCHEM1\MSVOA_U\METHOD\SOMULM080718WMA.M
 Quant Title : VOC Analysis
 QLast Update : Wed Aug 08 06:47:05 2018
 Response via : Initial Calibration

Internal Standards	R.T.	QIon	Response	Conc	Units	Dev(Min)
1) 1,4-Difluorobenzene	5.89	114	318612	50.00	ug/L	0.00
28) Chlorobenzene-d5	9.09	117	298360	50.00	ug/L	0.00
60) 1,4-Dichlorobenzene-d4	11.49	152	146141	50.00	ug/L	0.00

System Monitoring Compounds

4) Vinyl Chloride-d3	1.40	65	84446	47.83	ug/L	0.00
Spiked Amount	50.000	Range	60 - 135	Recovery	=	95.66%
7) Chloroethane-d5	1.68	69	67761	51.18	ug/L	0.00
Spiked Amount	50.000	Range	70 - 130	Recovery	=	102.36%
11) 1,1-Dichloroethene-d2	2.27	63	120463	35.23	ug/L	0.00
Spiked Amount	50.000	Range	60 - 125	Recovery	=	70.46%
21) 2-Butanone-d5	4.18	46	133998	110.30	ug/L	0.00
Spiked Amount	100.000	Range	40 - 130	Recovery	=	110.30%
24) Chloroform-d	4.65	84	175663	51.40	ug/L	0.00
Spiked Amount	50.000	Range	70 - 125	Recovery	=	102.80%
26) 1,2-Dichloroethane-d4	5.31	65	118138	52.36	ug/L	0.00
Spiked Amount	50.000	Range	70 - 125	Recovery	=	104.72%
32) Benzene-d6	5.35	84	338112	51.41	ug/L	0.00
Spiked Amount	50.000	Range	70 - 125	Recovery	=	102.82%
36) 1,2-Dichloropropane-d6	6.34	67	109089	53.35	ug/L	0.00
Spiked Amount	50.000	Range	70 - 120	Recovery	=	106.70%
41) Toluene-d8	7.57	98	311137	48.76	ug/L	0.00
Spiked Amount	50.000	Range	80 - 120	Recovery	=	97.52%
43) trans-1,3-Dichloropropene-	7.85	79	51406	47.94	ug/L	0.00
Spiked Amount	50.000	Range	60 - 125	Recovery	=	95.88%
47) 2-Hexanone-d5	8.31	63	89688	105.40	ug/L	0.00
Spiked Amount	100.000	Range	45 - 130	Recovery	=	105.40%
57) 1,1,2,2-Tetrachloroethane-	10.44	84	145404	51.33	ug/L	0.00
Spiked Amount	50.000	Range	65 - 120	Recovery	=	102.66%
64) 1,2-Dichlorobenzene-d4	11.86	152	130653	54.12	ug/L	0.00
Spiked Amount	50.000	Range	80 - 120	Recovery	=	108.24%

Target Compounds

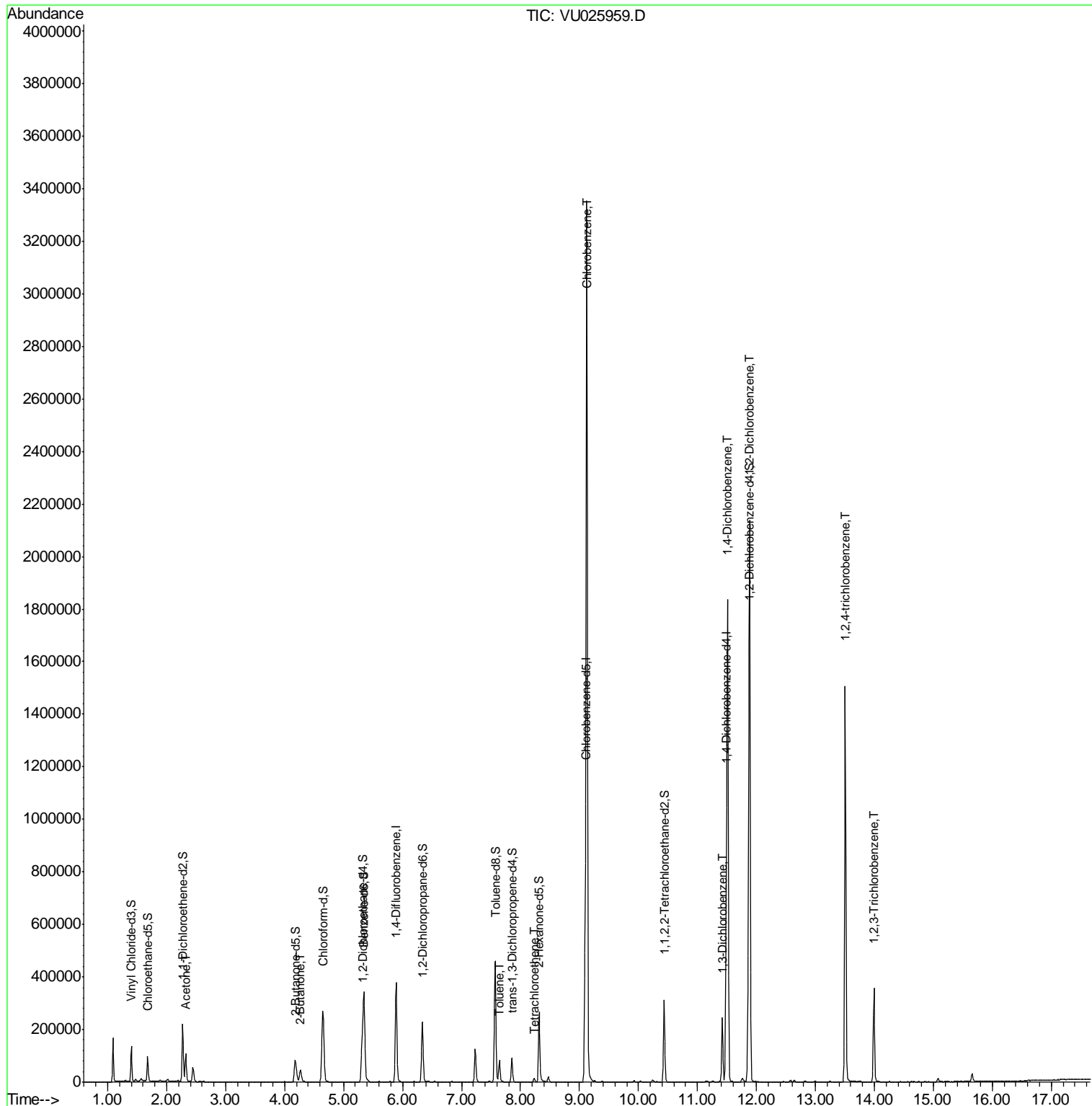
Target Compounds	R.T.	QIon	Response	Conc	Units	Ovalue
13) Acetone	2.32	43	107047	74.44	ug/L	97
22) 2-Butanone	4.27	43	70818	39.39	ug/L	100
42) Toluene	7.64	91	59047	6.94	ug/L	97
46) Tetrachloroethene	8.23	164	3205	1.72	ug/L	89
51) Chlorobenzene	9.12	112	1787451	306.71	ug/L	98
62) 1,3-Dichlorobenzene	11.42	146	101143	23.13	ug/L	99
63) 1,4-Dichlorobenzene	11.51	146	723826	162.49	ug/L	99
65) 1,2-Dichlorobenzene	11.88	146	833959	190.23	ug/L	98
68) 1,2,4-trichlorobenzene	13.51	180	466280	166.76	ug/L	99
70) 1,2,3-Trichlorobenzene	13.99	180	111298	38.85	ug/L	99

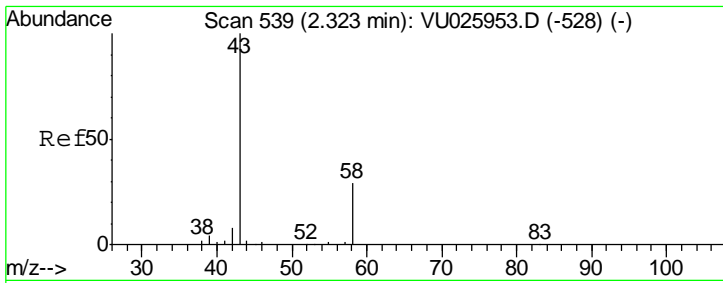
(#) = qualifier out of range (m) = manual integration (+) = signals summed

Data Path : Z:\VOASRV\HPCHEM1\MSVOA U\DATA\VU080718\
 Data File : VU025959.D
 Acq On : 08 Aug 2018 00:07
 Operator : MD/SY
 Sample : J4361-14
 Misc : 5.0mL/MSVOA U/WATER
 ALS Vial : 29 Sample Multiplier: 1

Instrument :
 MSVOA_U
 ClientSampled :
 A4ZC9

Quant Time: Aug 08 06:59:53 2018
 Quant Method : Z:\VOASRV\HPCHEM1\MSVOA_U\METHOD\SOMULM080718WMA.M
 Quant Title : VOC Analysis
 QLast Update : Wed Aug 08 06:47:05 2018
 Response via : Initial Calibration

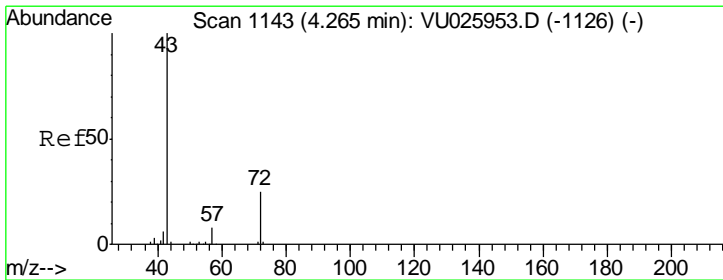
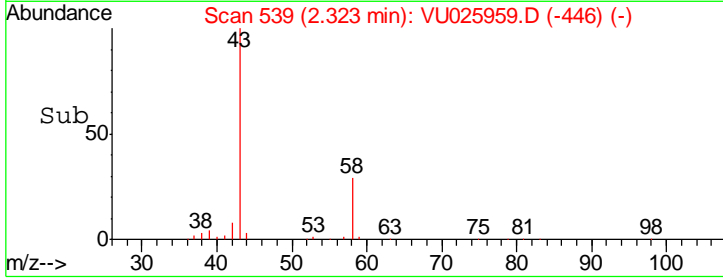
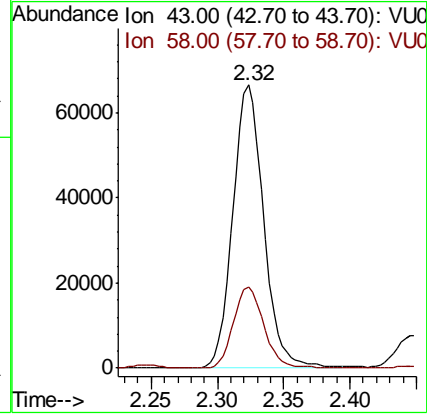
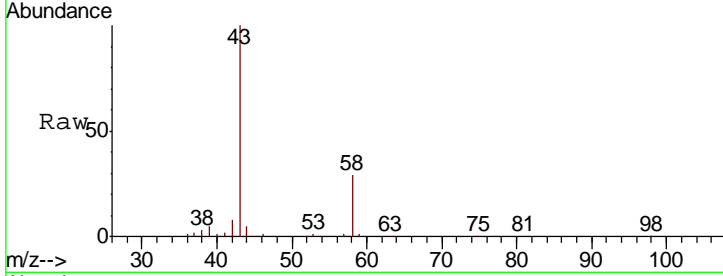




#13
 Acetone
 Concen: 74.44 ug/L
 RT: 2.32 min Scan# 539
 Delta R.T. 0.00 min
 Lab File: VU025959.D
 Acq: 08 Aug 2018 00:07

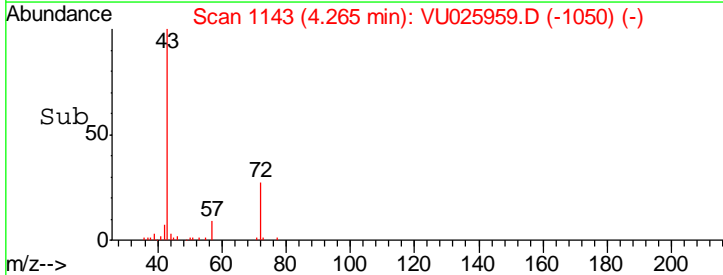
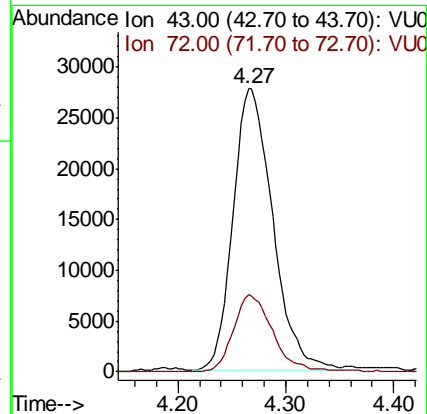
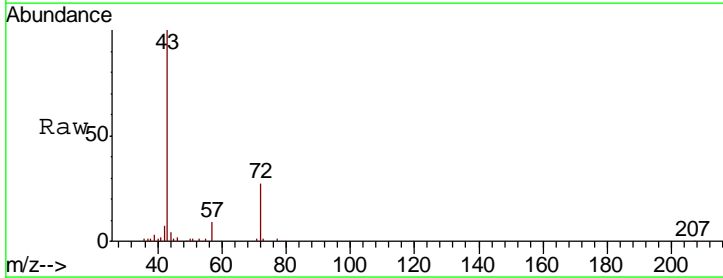
Instrument :
 MSVOA_U
 ClientSampled :
 A4ZC9

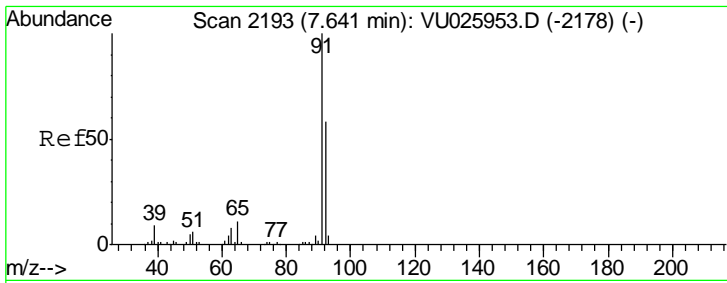
Tgt Ion	Resp	Lower	Upper
43	107047		
58	28.6	0.0	60.2



#22
 2-Butanone
 Concen: 39.39 ug/L
 RT: 4.27 min Scan# 1143
 Delta R.T. 0.00 min
 Lab File: VU025959.D
 Acq: 08 Aug 2018 00:07

Tgt Ion	Resp	Lower	Upper
43	70818		
72	26.8	13.4	40.2

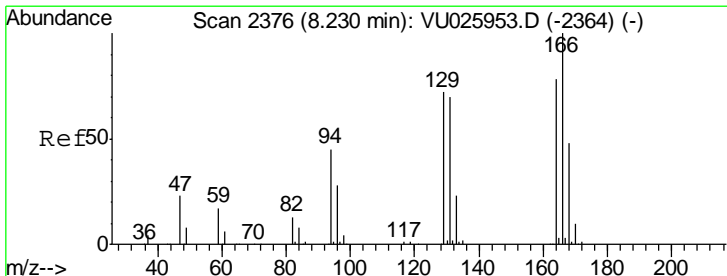
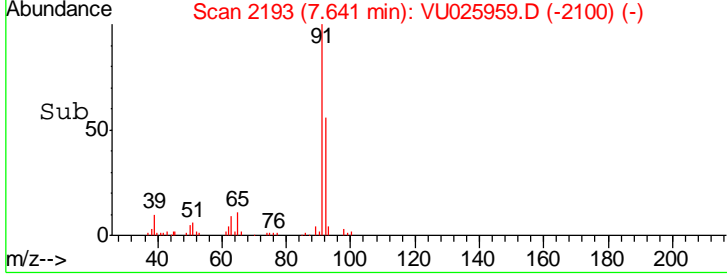
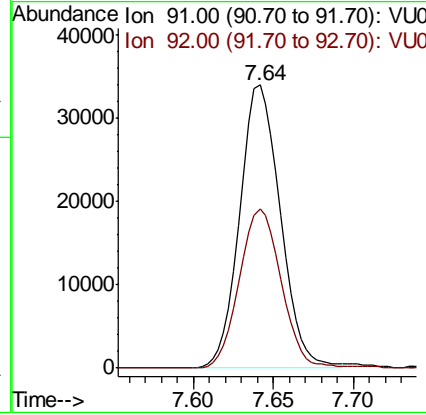
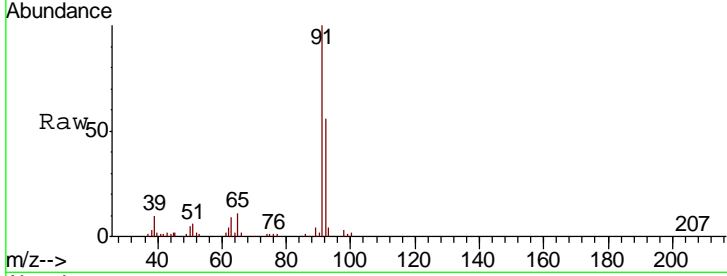




#42
 Toluene
 Concen: 6.94 ug/L
 RT: 7.64 min Scan# 2193
 Delta R.T. 0.00 min
 Lab File: VU025959.D
 Acq: 08 Aug 2018 00:07

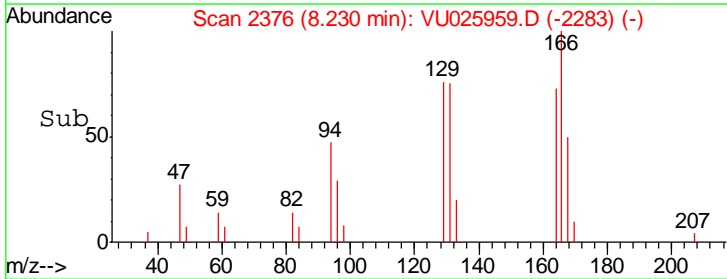
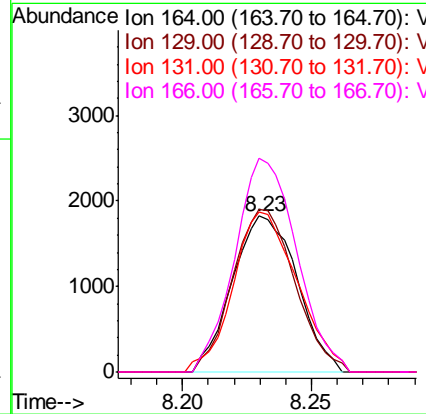
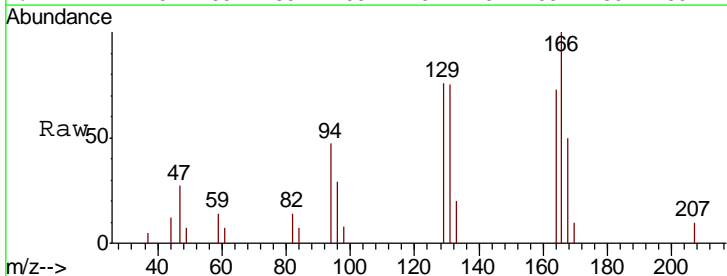
Instrument : MSVOA_U
 ClientSampled : A4ZC9

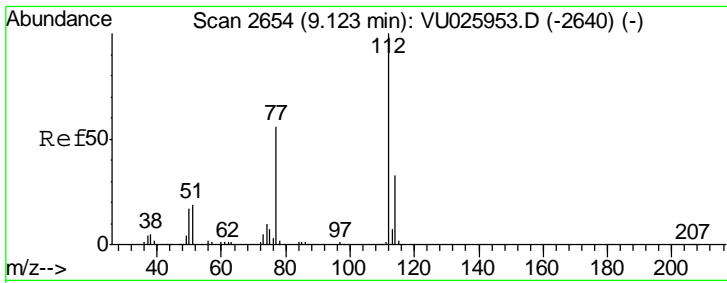
Tgt Ion	Resp	Lower	Upper
91	100		
92	56.4	40.9	75.9



#46
 Tetrachloroethene
 Concen: 1.72 ug/L
 RT: 8.23 min Scan# 2376
 Delta R.T. 0.00 min
 Lab File: VU025959.D
 Acq: 08 Aug 2018 00:07

Tgt Ion	Resp	Lower	Upper
164	100		
129	104.1	64.8	120.3
131	102.7	63.1	117.3
166	137.1	89.5	166.3

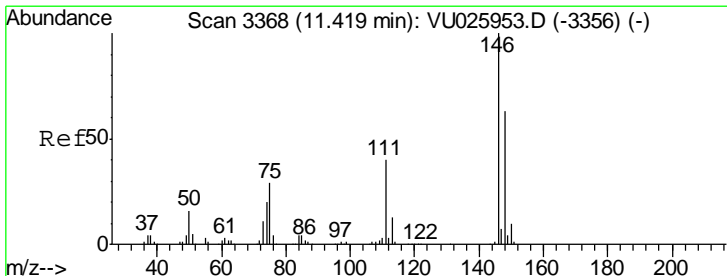
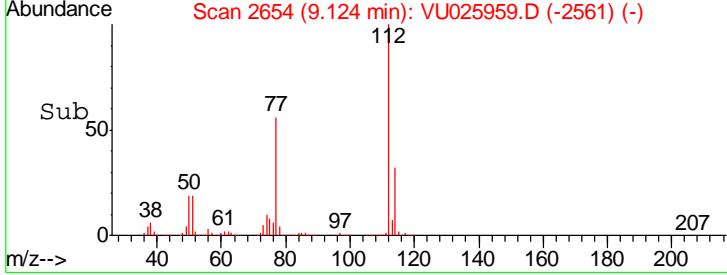
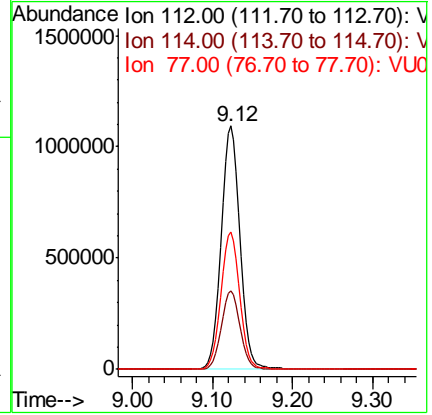
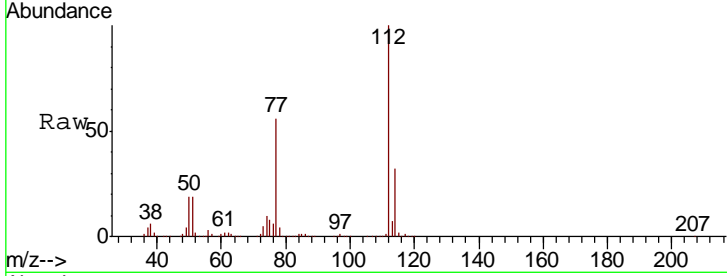




#51
 Chlorobenzene
 Concen: 306.71 ug/L
 RT: 9.12 min Scan# 2654
 Delta R.T. 0.00 min
 Lab File: VU025959.D
 Acq: 08 Aug 2018 00:07

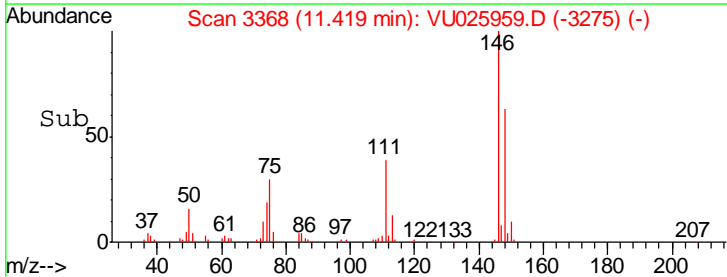
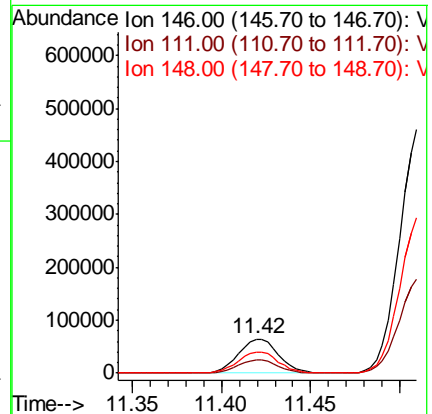
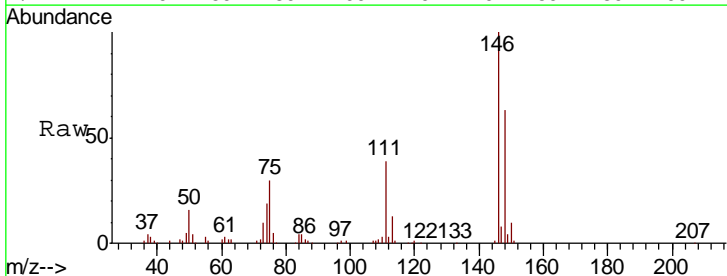
Instrument : MSVOA_U
 ClientSampled : A4ZC9

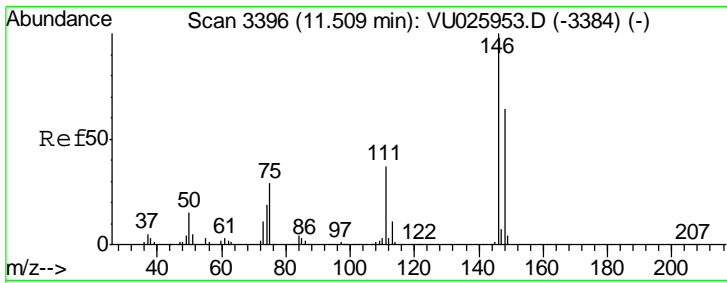
Tgt Ion	Resp	Lower	Upper
112	100		
114	32.3	22.9	42.5
77	56.3	46.6	70.0



#62
 1,3-Dichlorobenzene
 Concen: 23.13 ug/L
 RT: 11.42 min Scan# 3368
 Delta R.T. 0.00 min
 Lab File: VU025959.D
 Acq: 08 Aug 2018 00:07

Tgt Ion	Resp	Lower	Upper
146	100		
111	38.7	27.5	51.1
148	63.2	44.6	82.8

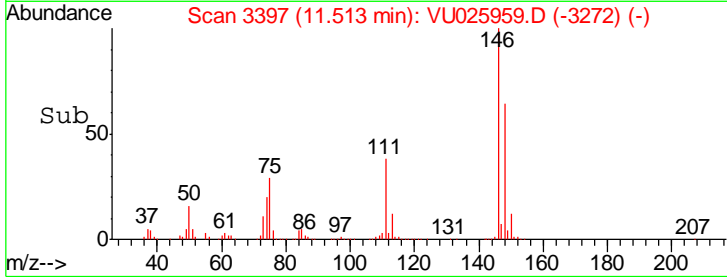
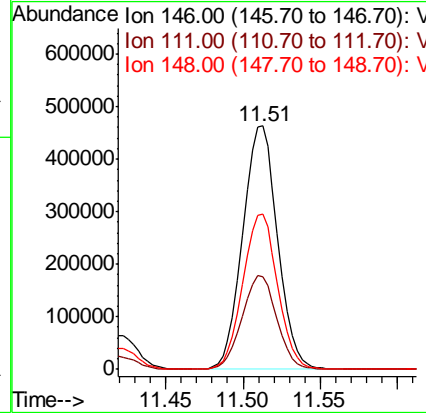
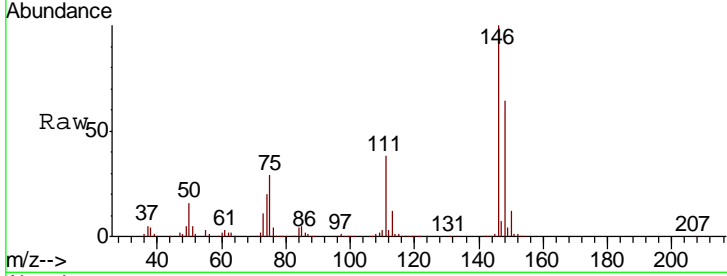




#63
 1,4-Dichlorobenzene
 Concen: 162.49 ug/L
 RT: 11.51 min Scan# 3397
 Delta R.T. 0.00 min
 Lab File: VU025959.D
 Acq: 08 Aug 2018 00:07

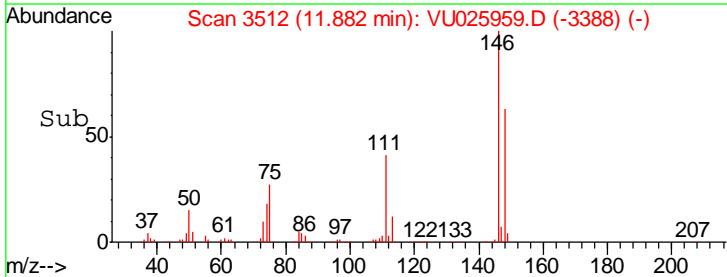
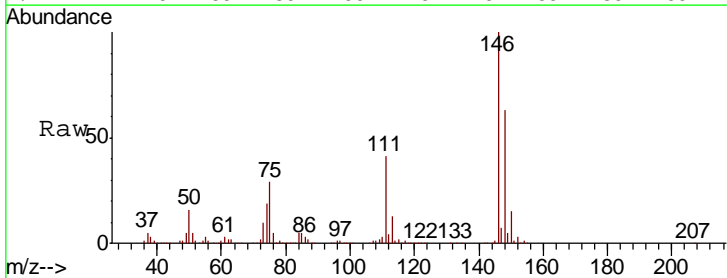
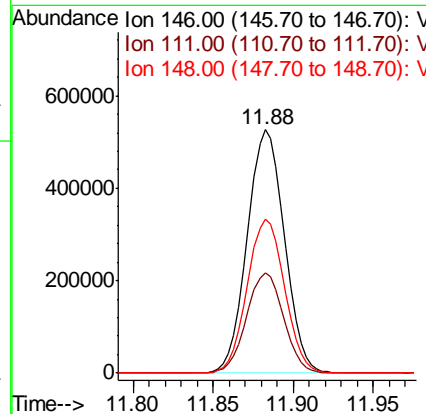
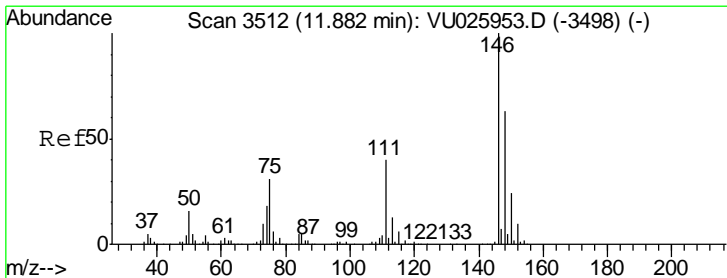
Instrument :
 MSVOA_U
 ClientSampled :
 A4ZC9

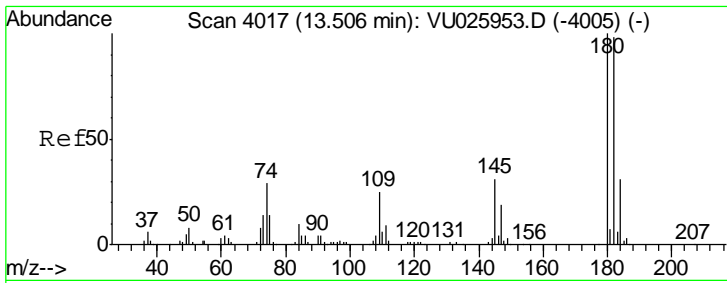
Tgt Ion	Resp	Lower	Upper
146	100		
111	38.3	26.7	49.7
148	63.8	45.2	84.0



#65
 1,2-Dichlorobenzene
 Concen: 190.23 ug/L
 RT: 11.88 min Scan# 3512
 Delta R.T. 0.00 min
 Lab File: VU025959.D
 Acq: 08 Aug 2018 00:07

Tgt Ion	Resp	Lower	Upper
146	100		
111	41.2	33.4	50.0
148	63.1	51.8	77.8

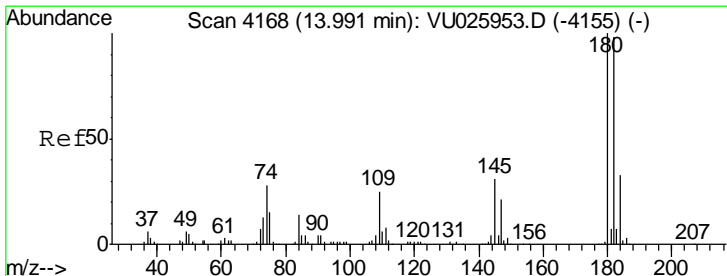
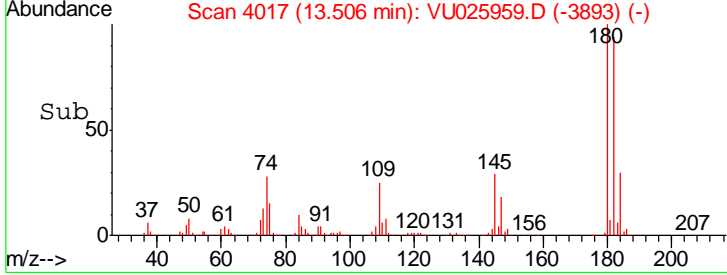
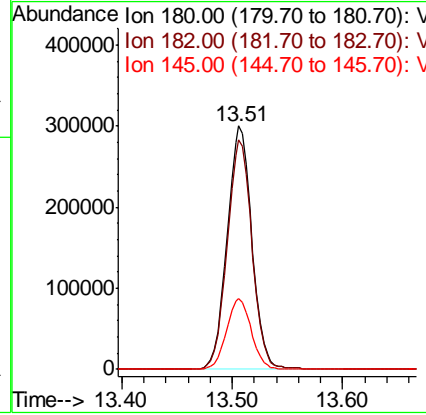
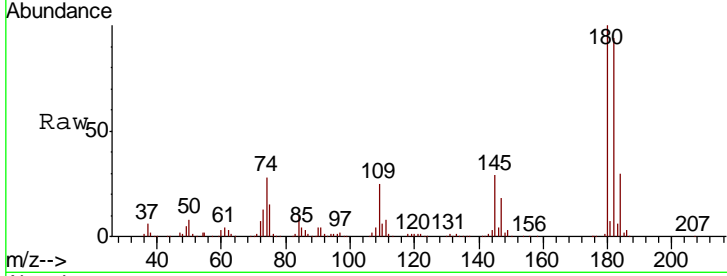




#68
 1,2,4-trichlorobenzene
 Concen: 166.76 ug/L
 RT: 13.51 min Scan# 4017
 Delta R.T. 0.00 min
 Lab File: VU025959.D
 Acq: 08 Aug 2018 00:07

Instrument :
 MSVOA_U
 ClientSampled :
 A4ZC9

Tgt Ion	Resp	Lower	Upper
180	100		
182	94.6	75.3	112.9
145	29.1	23.1	34.7



#70
 1,2,3-Trichlorobenzene
 Concen: 38.85 ug/L
 RT: 13.99 min Scan# 4168
 Delta R.T. 0.00 min
 Lab File: VU025959.D
 Acq: 08 Aug 2018 00:07

Tgt Ion	Resp	Lower	Upper
180	100		
182	96.2	77.6	116.4
145	31.7	25.3	37.9

