

Data Path : Z:\VOASRV\HPCHEM1\MSVOA U\DATA\VU080720\
 Data File : VU039775.D
 Acq On : 07 Aug 2020 10:13
 Operator : SY/MD
 Sample : VSTDCCC005
 Misc : 25.0mL/MSVOA U/WATER
 ALS Vial : 2 Sample Multiplier: 1

Instrument :
 MSVOA_U
 ClientSampleId :

Quant Time: Aug 08 03:17:18 2020
 Quant Method : Z:\VOASRV\HPCHEM1\MSVOA_U\METHOD\SOMUTR080320WMA.M
 Quant Title : TRACE VOA SOM01.0
 QLast Update : Fri Aug 07 04:28:48 2020
 Response via : Initial Calibration

Internal Standards	R.T.	QIon	Response	Conc	Units	Dev(Min)
1) 1,4-Difluorobenzene	6.26	114	77080	5.00	ug/L	0.00
28) Chlorobenzene-d5	9.42	117	76400	5.00	ug/L	0.00
60) 1,4-Dichlorobenzene-d4	11.81	152	40215	5.00	ug/L	0.00

System Monitoring Compounds

4) Vinyl Chloride-d3	1.60	65	19242	4.62	ug/L	0.00
Spiked Amount	5.000	Range	40 - 130	Recovery	=	92.40%
7) Chloroethane-d5	1.92	69	19592	4.35	ug/L	0.00
Spiked Amount	5.000	Range	65 - 130	Recovery	=	87.00%
11) 1,1-Dichloroethene-d2	2.58	63	42109	5.02	ug/L	0.00
Spiked Amount	5.000	Range	60 - 125	Recovery	=	100.40%
20) 2-Butanone-d5	4.66	46	99891	54.57	ug/L	0.00
Spiked Amount	50.000	Range	40 - 130	Recovery	=	109.14%
24) Chloroform-d	5.08	84	49226	4.74	ug/L	0.00
Spiked Amount	5.000	Range	70 - 125	Recovery	=	94.80%
26) 1,2-Dichloroethane-d4	5.72	65	30305	4.89	ug/L	0.00
Spiked Amount	5.000	Range	70 - 130	Recovery	=	97.80%
32) Benzene-d6	5.74	84	82789	4.56	ug/L	0.00
Spiked Amount	5.000	Range	70 - 125	Recovery	=	91.20%
36) 1,2-Dichloropropane-d6	6.70	67	28451	4.57	ug/L	0.00
Spiked Amount	5.000	Range	60 - 140	Recovery	=	91.40%
41) Toluene-d8	7.90	98	68645	4.26	ug/L	0.00
Spiked Amount	5.000	Range	70 - 130	Recovery	=	85.20%
43) trans-1,3-Dichloropropene-	8.19	79	10909	4.57	ug/L	0.00
Spiked Amount	5.000	Range	55 - 130	Recovery	=	91.40%
46) 2-Hexanone-d5	8.64	63	70189	54.35	ug/L	0.00
Spiked Amount	50.000	Range	45 - 130	Recovery	=	108.70%
57) 1,1,2,2-Tetrachloroethane-	10.75	84	28783	4.76	ug/L	0.00
Spiked Amount	5.000	Range	65 - 120	Recovery	=	95.20%
64) 1,2-Dichlorobenzene-d4	12.19	152	32626	4.74	ug/L	0.00
Spiked Amount	5.000	Range	80 - 120	Recovery	=	94.80%

Target Compounds

Target Compounds	R.T.	QIon	Response	Conc	Units	Ovalue
2) Dichlorodifluoromethane	1.39	85	33922	5.458	ug/L	98
3) Chloromethane	1.53	50	31763	4.859	ug/L	100
5) Vinyl chloride	1.61	62	34737	5.543	ug/L	98
6) Bromomethane	1.86	94	15600	3.934	ug/L	99
8) Chloroethane	1.94	64	22766	4.954	ug/L	98
9) Trichlorofluoromethane	2.15	101	51947	5.330	ug/L	96
10) 1,1,2-Trichloro-1,2,2-trif	2.59	101	30286	5.727	ug/L	95
12) 1,1-Dichloroethene	2.59	96	26617	5.789	ug/L	94
13) Acetone	2.66	43	13531	12.538	ug/L #	1
14) Carbon disulfide	2.81	76	78013	5.426	ug/L	99
15) Methyl Acetate	2.97	43	12604	4.735	ug/L	93
16) Methylene chloride	3.06	84	30630	4.132	ug/L	98
17) Methyl tert-butyl Ether	3.38	73	67574	5.535	ug/L	99
18) trans-1,2-Dichloroethene	3.37	96	27898	5.450	ug/L	93
19) 1,1-Dichloroethane	3.89	63	51118	5.409	ug/L	96
21) 2-Butanone	4.74	43	94155	55.361	ug/L	99
22) cis-1,2-Dichloroethene	4.68	96	31681	5.690	ug/L	97

Data Path : Z:\VOASRV\HPCHEM1\MSVOA U\DATA\VU080720\
 Data File : VU039775.D
 Acq On : 07 Aug 2020 10:13
 Operator : SY/MD
 Sample : VSTDCCC005
 Misc : 25.0mL/MSVOA U/WATER
 ALS Vial : 2 Sample Multiplier: 1

Instrument :
 MSVOA_U
 ClientSampleId :

Quant Time: Aug 08 03:17:18 2020
 Quant Method : Z:\VOASRV\HPCHEM1\MSVOA_U\METHOD\SOMUTR080320WMA.M
 Quant Title : TRACE VOA SOM01.0
 QLast Update : Fri Aug 07 04:28:48 2020
 Response via : Initial Calibration

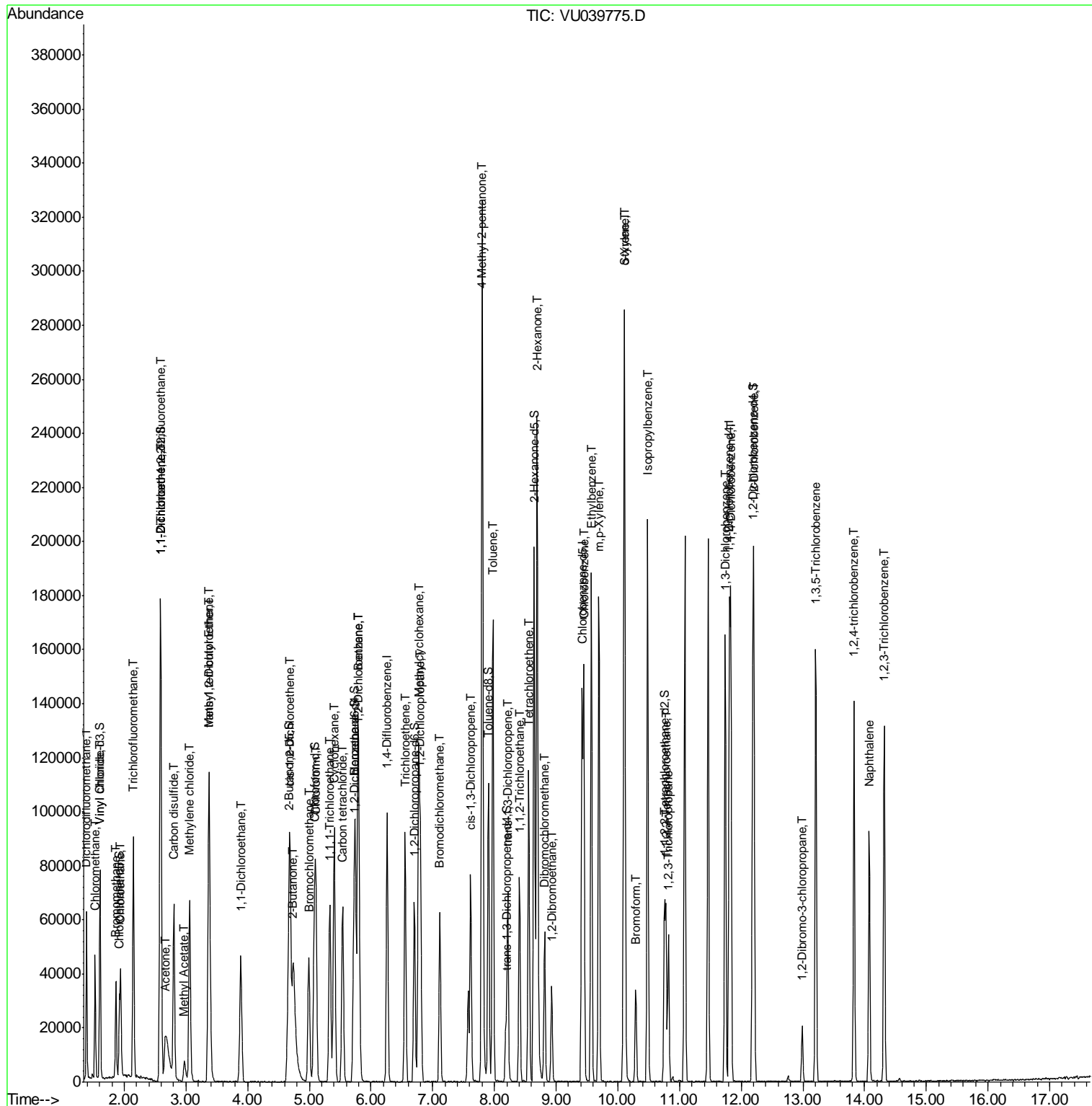
Internal Standards	R.T.	QIon	Response	Conc	Units	Dev(Min)
23) Bromochloromethane	5.00	128	15063	5.760	ug/L	96
25) Chloroform	5.11	83	54445	5.359	ug/L	94
27) 1,2-Dichloroethane	5.81	62	36421	5.202	ug/L	98
29) 1,1,1-Trichloroethane	5.33	97	45571	5.347	ug/L	97
30) Cyclohexane	5.40	56	43081	5.253	ug/L	99
31) Carbon tetrachloride	5.54	117	41017	5.245	ug/L	97
33) Benzene	5.79	78	111887	5.375	ug/L	100
34) Trichloroethene	6.55	95	28781	5.324	ug/L	96
35) Methylcyclohexane	6.77	83	43282	5.016	ug/L	93
37) 1,2-Dichloropropane	6.80	63	29202	5.282	ug/L	98
38) Bromodichloromethane	7.11	83	37248	5.149	ug/L	99
39) cis-1,3-Dichloropropene	7.62	75	39654	5.259	ug/L	98
40) 4-Methyl-2-pentanone	7.80	43	222803	53.927	ug/L	99
42) Toluene	7.98	91	116950	5.346	ug/L	100
44) trans-1,3-Dichloropropene	8.22	75	35076	5.164	ug/L	98
45) 1,1,2-Trichloroethane	8.41	97	22113	5.317	ug/L	89
47) Tetrachloroethene	8.56	164	22865	5.127	ug/L	96
48) 2-Hexanone	8.69	43	167161	56.029	ug/L	99
49) Dibromochloromethane	8.81	129	27229	5.335	ug/L	98
50) 1,2-Dibromoethane	8.93	107	22299	5.468	ug/L	98
51) Chlorobenzene	9.45	112	75428	5.131	ug/L	97
52) Ethylbenzene	9.57	91	125348	5.120	ug/L	99
53) m,p-Xylene	9.69	106	50957	5.466	ug/L	94
54) o-Xylene	10.10	106	47908	5.248	ug/L	96
55) Styrene	10.11	104	82843	5.389	ug/L	100
56) Isopropylbenzene	10.48	105	127695	5.234	ug/L	98
58) 1,1,2,2-Tetrachloroethane	10.78	83	29043	5.076	ug/L #	98
59) 1,2,3-Trichloropropane	10.82	75	20533	5.149	ug/L	98
61) Bromoform	10.29	173	14274	5.253	ug/L	92
62) 1,3-Dichlorobenzene	11.74	146	62551	5.314	ug/L	99
63) 1,4-Dichlorobenzene	11.83	146	63428	5.112	ug/L	99
65) 1,2-Dichlorobenzene	12.20	146	60268	5.197	ug/L	97
66) 1,2-Dibromo-3-chloropropan	12.99	75	4558	5.199	ug/L #	82
67) 1,3,5-Trichlorobenzene	13.21	180	45247	5.072	ug/L	98
68) 1,2,4-trichlorobenzene	13.83	180	38147	5.103	ug/L	99
69) Naphthalene	14.08	128	70251	5.256	ug/L	99
70) 1,2,3-Trichlorobenzene	14.32	180	36801	5.487	ug/L	99

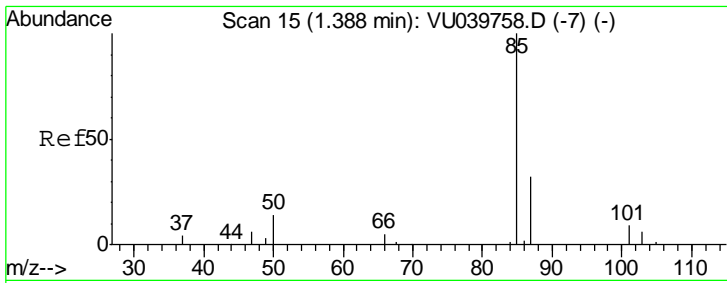
(#) = qualifier out of range (m) = manual integration (+) = signals summed

Data Path : Z:\VOASRV\HPCHEM1\MSVOA U\DATA\VU080720\
 Data File : VU039775.D
 Acq On : 07 Aug 2020 10:13
 Operator : SY/MD
 Sample : VSTDCCC005
 Misc : 25.0mL/MSVOA U/WATER
 ALS Vial : 2 Sample Multiplier: 1

Instrument :
 MSVOA_U
 Client Sampled :

Quant Time: Aug 08 03:17:18 2020
 Quant Method : Z:\VOASRV\HPCHEM1\MSVOA_U\METHOD\SOMUTR080320WMA.M
 Quant Title : TRACE VOA SOM01.0
 QLast Update : Fri Aug 07 04:28:48 2020
 Response via : Initial Calibration

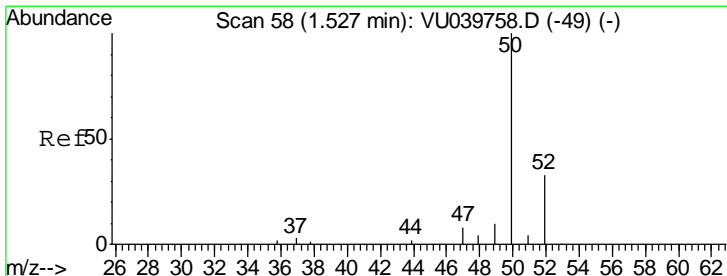
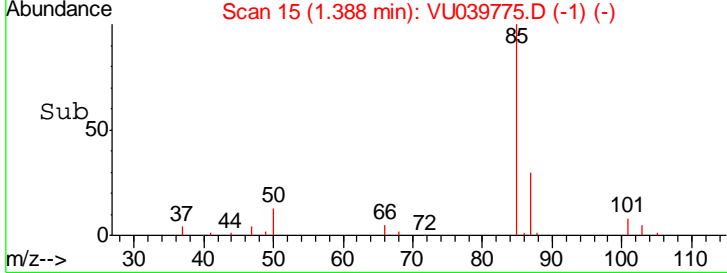
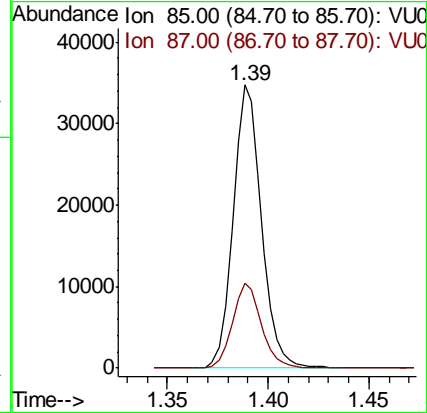
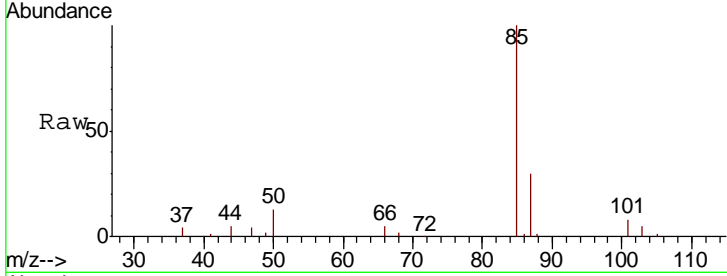




#2
 Dichlorodifluoromethane
 Concen: 5.458 ug/L
 RT: 1.39 min Scan# 15
 Delta R.T. 0.00 min
 Lab File: VU039775.D
 Acq: 07 Aug 2020 10:13

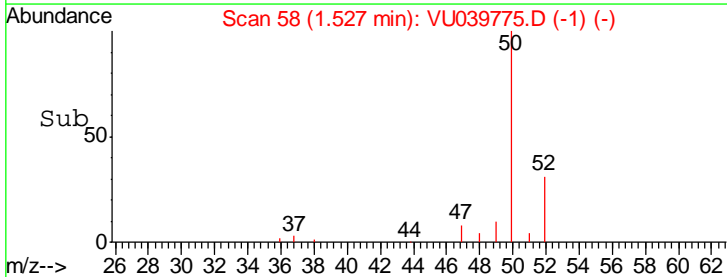
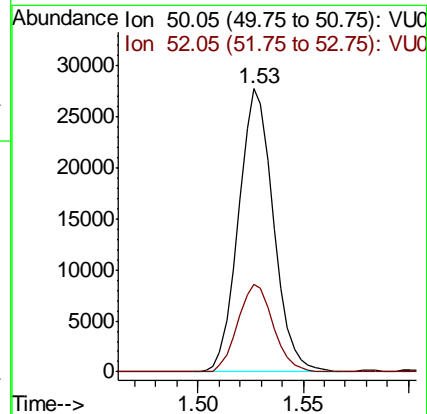
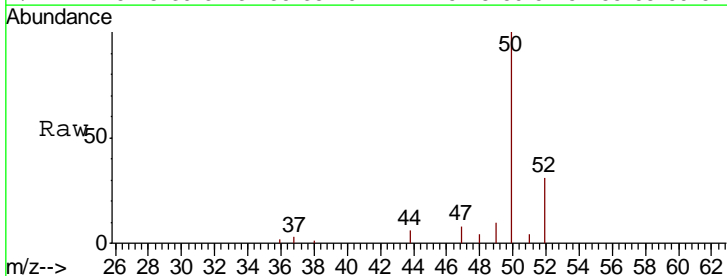
Instrument :
 MSVOA_U
 ClientSampled :

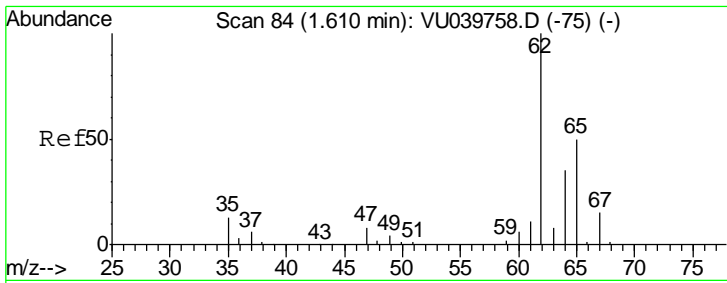
Tgt Ion	Resp	Lower	Upper
85	33922		
87	30.6	25.4	38.0



#3
 Chloromethane
 Concen: 4.859 ug/L
 RT: 1.53 min Scan# 58
 Delta R.T. 0.00 min
 Lab File: VU039775.D
 Acq: 07 Aug 2020 10:13

Tgt Ion	Resp	Lower	Upper
50	31763		
52	31.1	21.6	40.0

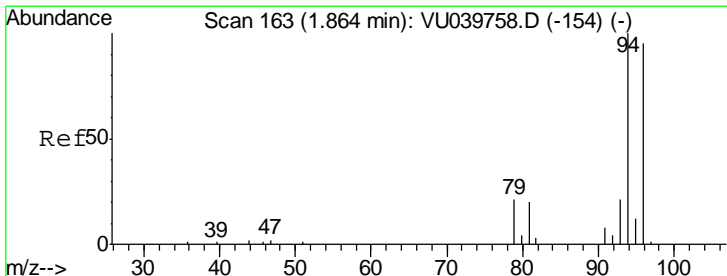
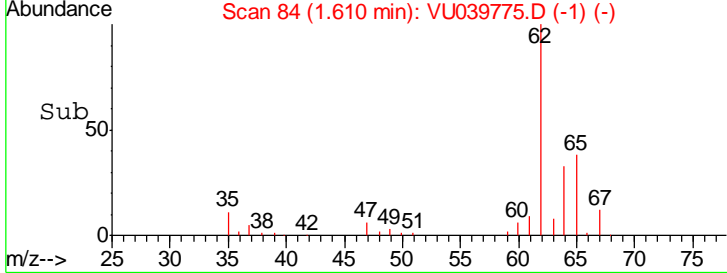
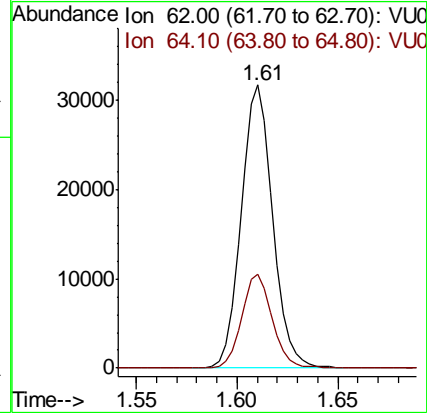
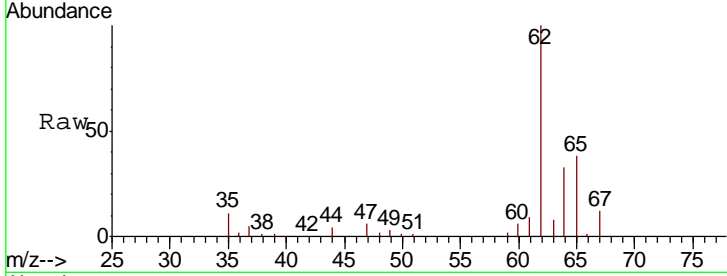




#5
 Vinyl chloride
 Concen: 5.543 ug/L
 RT: 1.61 min Scan# 84
 Delta R.T. 0.00 min
 Lab File: VU039775.D
 Acq: 07 Aug 2020 10:13

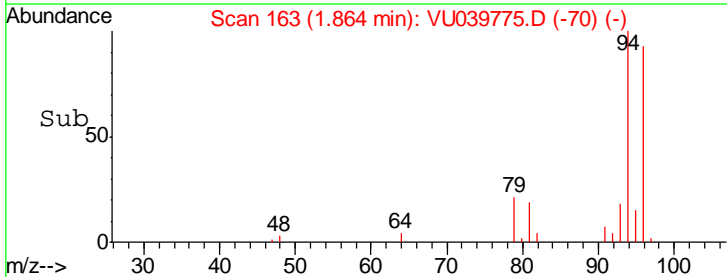
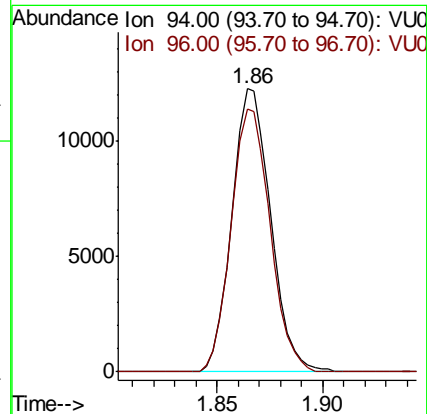
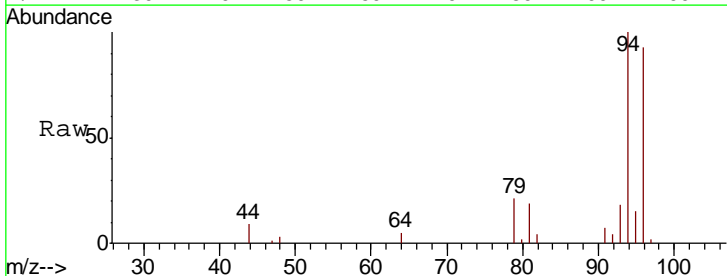
Instrument :
 MSVOA_U
 ClientSampled :

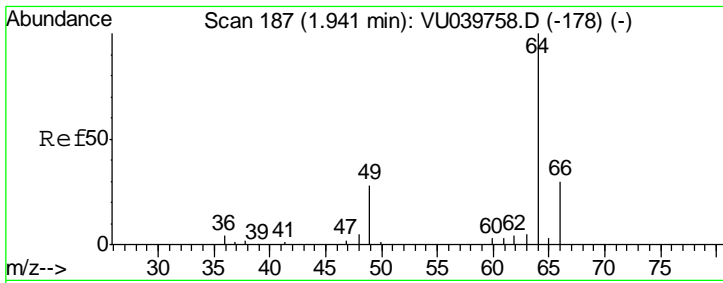
Tgt Ion	Resp	Lower	Upper
62	100		
64	33.4	24.1	44.7



#6
 Bromomethane
 Concen: 3.934 ug/L
 RT: 1.86 min Scan# 163
 Delta R.T. 0.00 min
 Lab File: VU039775.D
 Acq: 07 Aug 2020 10:13

Tgt Ion	Resp	Lower	Upper
94	100		
96	93.0	65.8	122.2

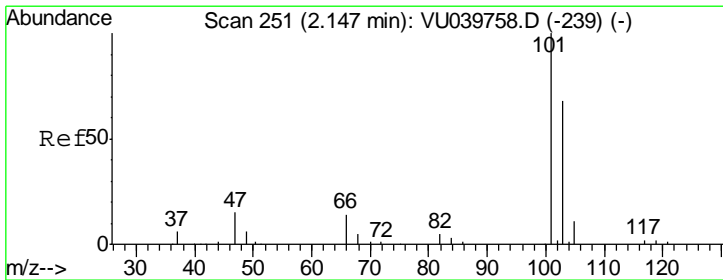
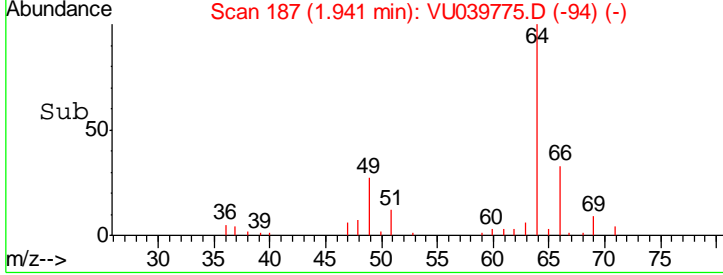
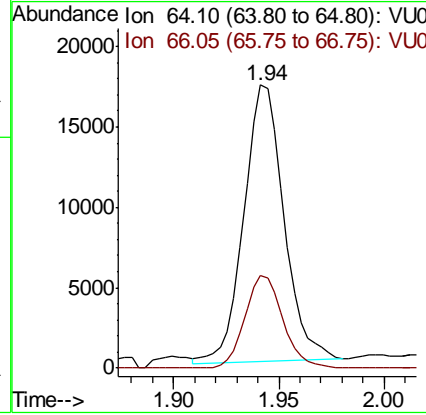
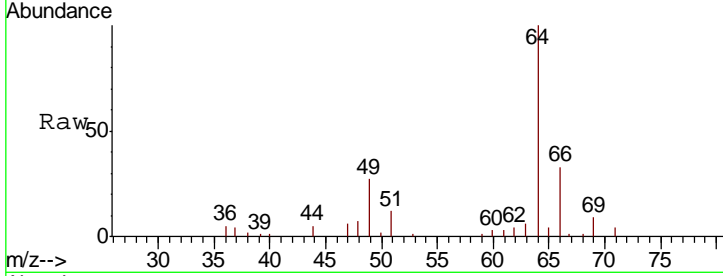




#8
 Chloroethane
 Concen: 4.954 ug/L
 RT: 1.94 min Scan# 187
 Delta R.T. 0.00 min
 Lab File: VU039775.D
 Acq: 07 Aug 2020 10:13

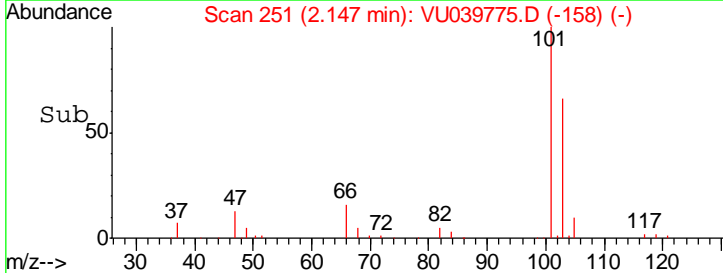
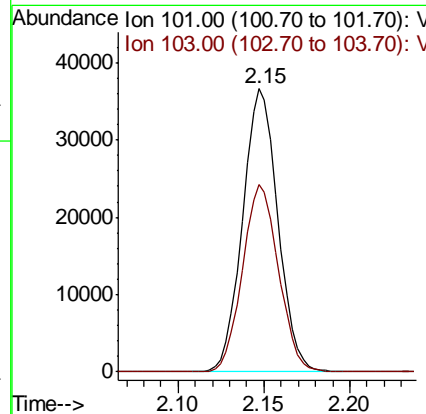
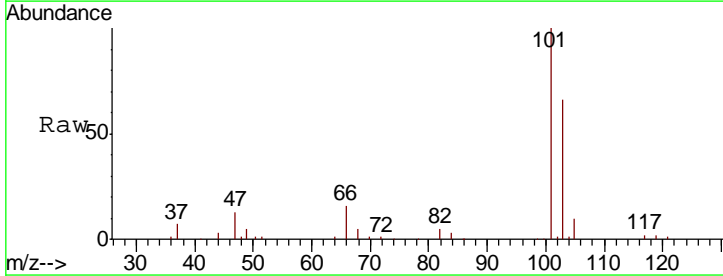
Instrument :
 MSVOA_U
 ClientSampled :

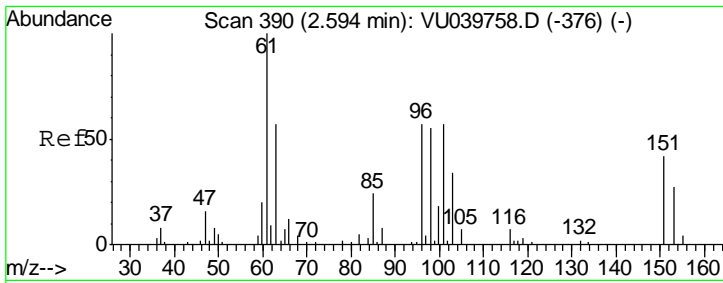
Tgt Ion	Resp	Lower	Upper
64	100		
66	32.8	22.3	41.3



#9
 Trichlorofluoromethane
 Concen: 5.330 ug/L
 RT: 2.15 min Scan# 251
 Delta R.T. 0.00 min
 Lab File: VU039775.D
 Acq: 07 Aug 2020 10:13

Tgt Ion	Resp	Lower	Upper
101	100		
103	67.3	51.4	77.2





#10

1,1,2-Trichloro-1,2,2-trifluoroethane

Concen: 5.727 ug/L

RT: 2.59 min Scan# 389

Delta R.T. -0.00 min

Lab File: VU039775.D

Acq: 07 Aug 2020 10:13

Instrument :
MSVOA_U
ClientSampled :

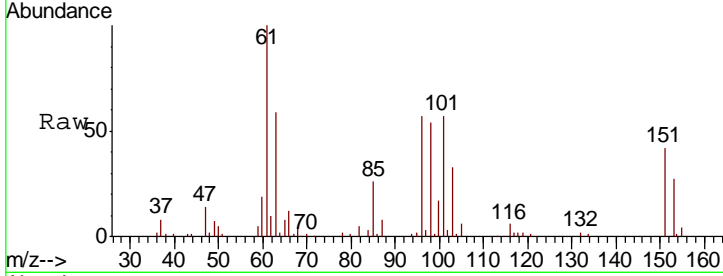
Tgt Ion: 101 Resp: 30286

Ion Ratio Lower Upper

101 100

85 45.6 37.9 56.9

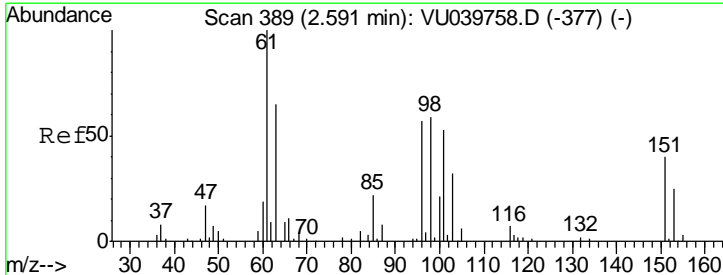
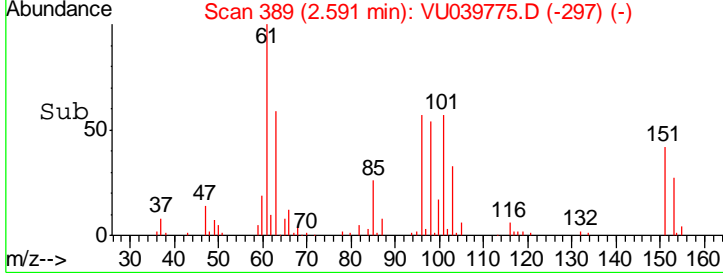
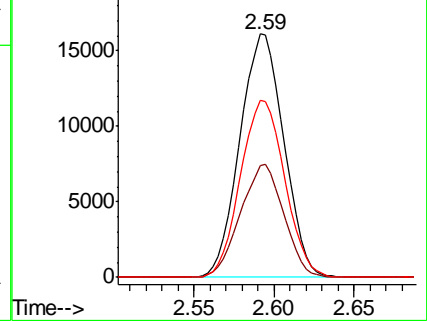
151 73.1 54.7 82.1



Abundance Ion 101.00 (100.70 to 101.70): V

Ion 85.00 (84.70 to 85.70): VU0

Ion 151.00 (150.70 to 151.70): V



#12

1,1-Dichloroethene

Concen: 5.789 ug/L

RT: 2.59 min Scan# 389

Delta R.T. 0.00 min

Lab File: VU039775.D

Acq: 07 Aug 2020 10:13

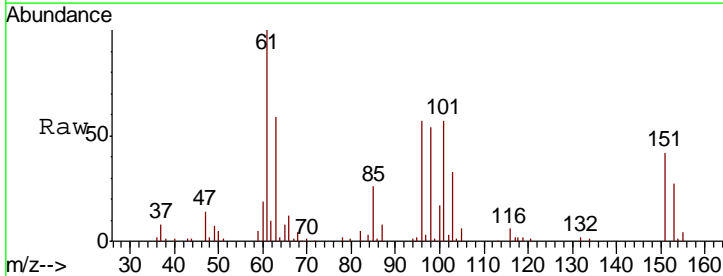
Tgt Ion: 96 Resp: 26617

Ion Ratio Lower Upper

96 100

61 176.2 121.7 225.9

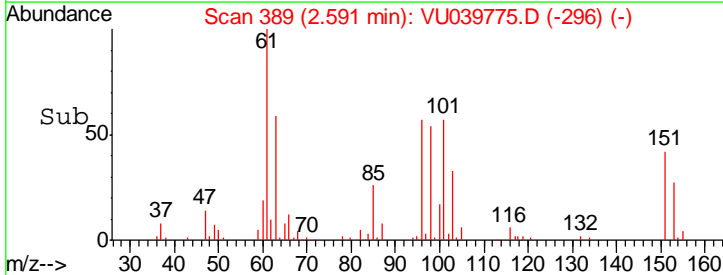
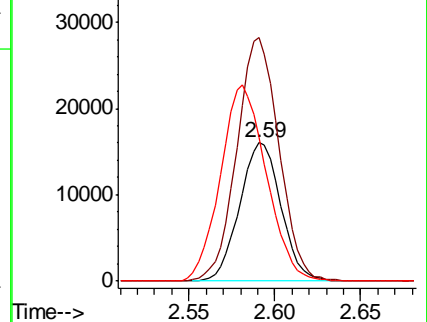
63 104.0 82.1 152.5

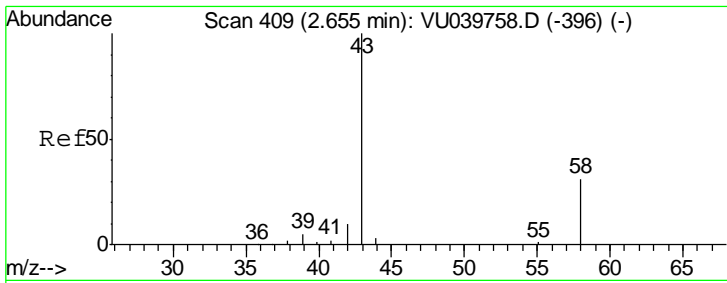


Abundance Ion 96.00 (95.70 to 96.70): VU0

Ion 61.05 (60.75 to 61.75): VU0

Ion 63.00 (62.70 to 63.70): VU0

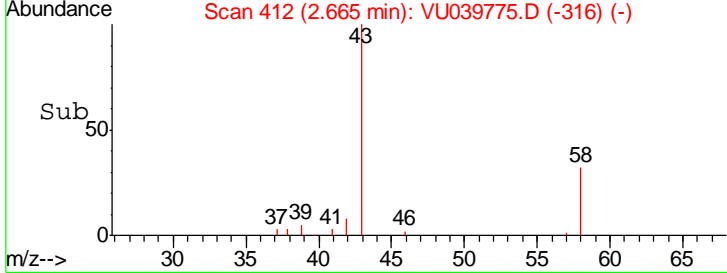
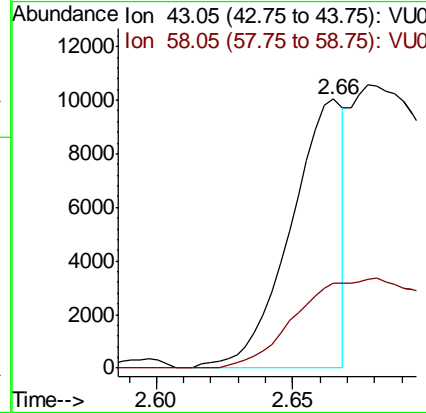
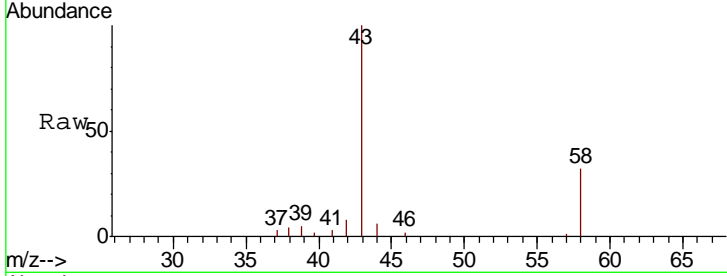




#13
 Acetone
 Concen: 12.538 ug/L
 RT: 2.66 min Scan# 412
 Delta R.T. 0.01 min
 Lab File: VU039775.D
 Acq: 07 Aug 2020 10:13

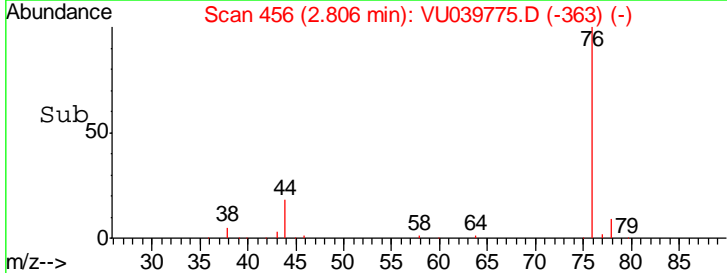
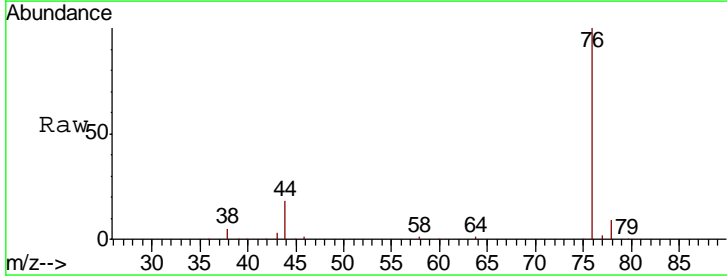
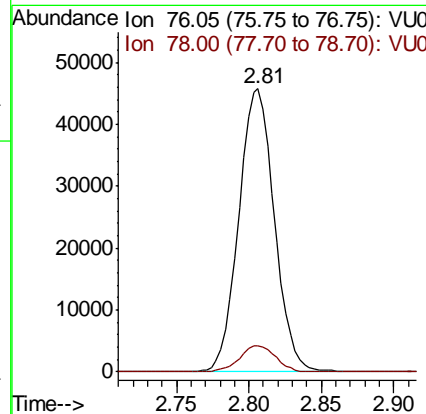
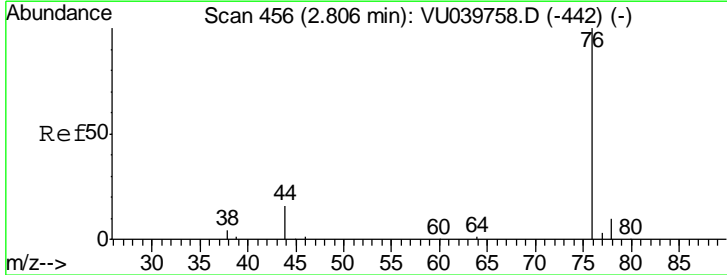
Instrument :
 MSVOA_U
 ClientSampled :

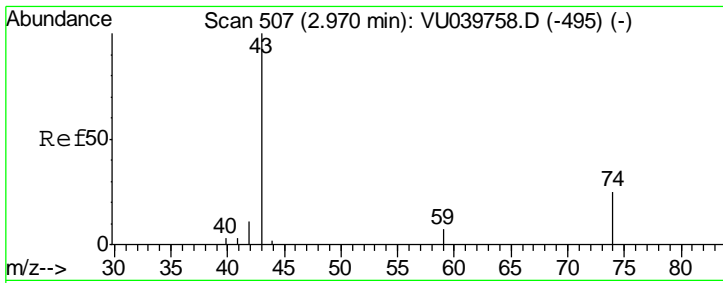
Tgt Ion	Resp	Lower	Upper
43	13531		
58	121.2	0.0	61.8#



#14
 Carbon disulfide
 Concen: 5.426 ug/L
 RT: 2.81 min Scan# 456
 Delta R.T. 0.00 min
 Lab File: VU039775.D
 Acq: 07 Aug 2020 10:13

Tgt Ion	Resp	Lower	Upper
76	78013		
78	9.2	7.8	11.6

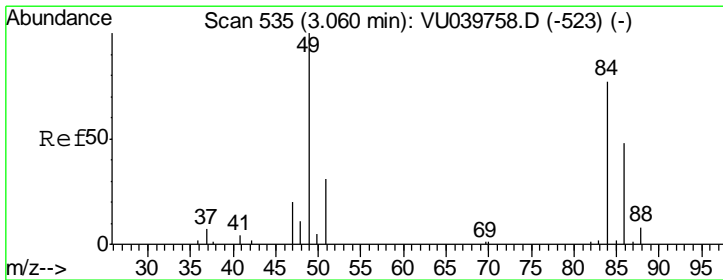
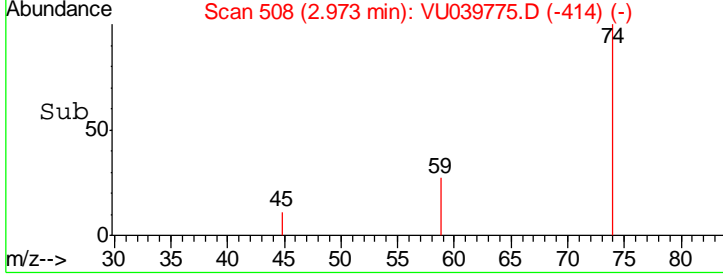
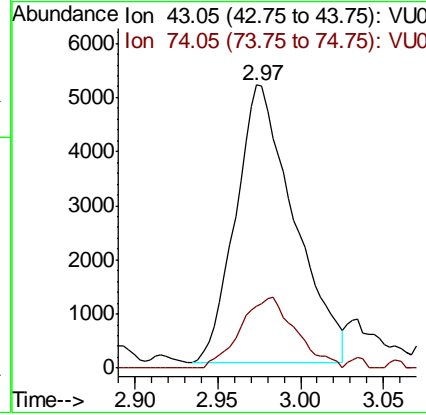
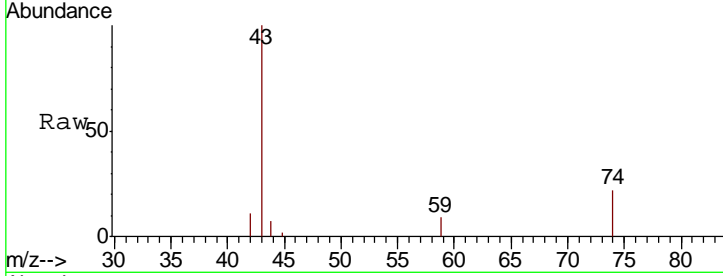




#15
 Methyl Acetate
 Concen: 4.735 ug/L
 RT: 2.97 min Scan# 508
 Delta R.T. 0.00 min
 Lab File: VU039775.D
 Acq: 07 Aug 2020 10:13

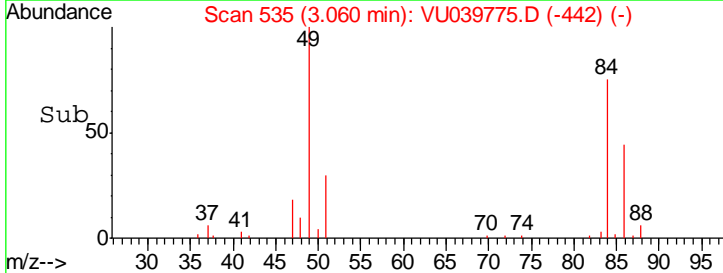
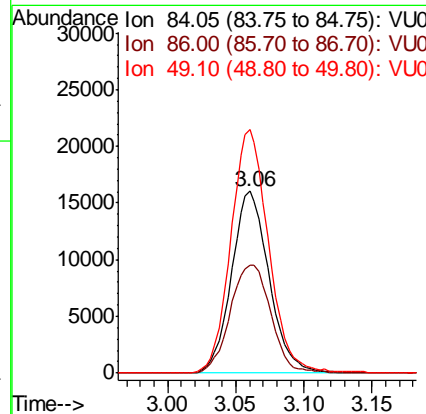
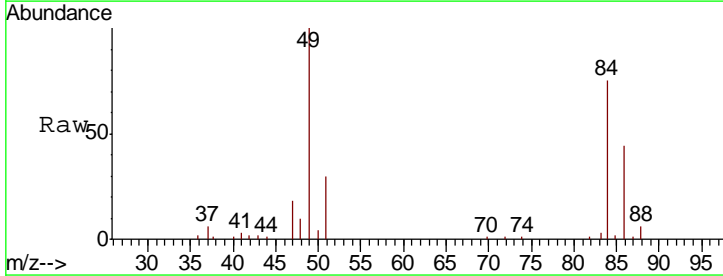
Instrument :
 MSVOA_U
 ClientSampled :

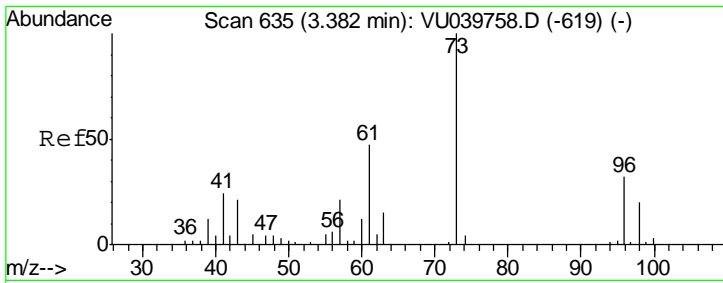
Tgt Ion	Resp	Lower	Upper
43	12604		
74	24.0	16.6	25.0



#16
 Methylene chloride
 Concen: 4.132 ug/L
 RT: 3.06 min Scan# 535
 Delta R.T. 0.00 min
 Lab File: VU039775.D
 Acq: 07 Aug 2020 10:13

Tgt Ion	Resp	Lower	Upper
84	30630		
86	59.5	43.9	81.5
49	134.0	94.4	175.4

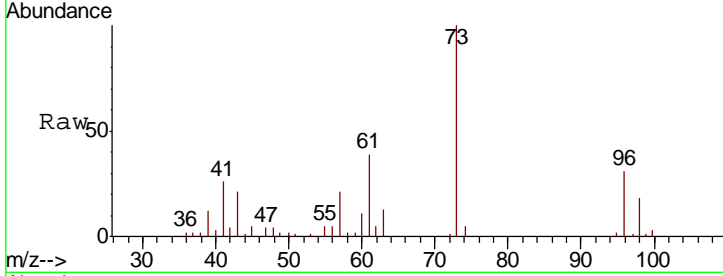




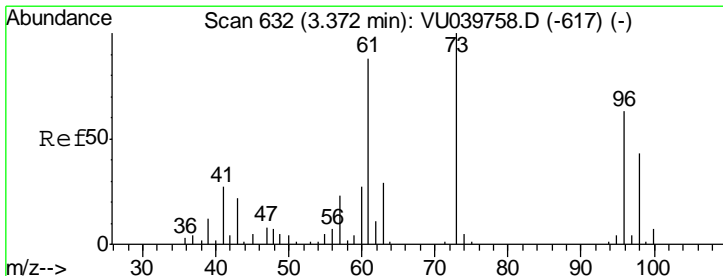
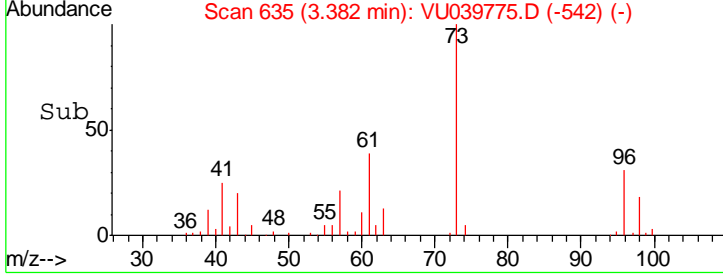
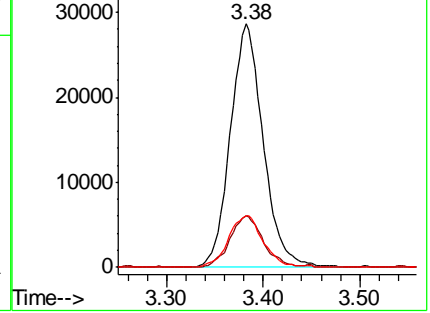
#17
 Methyl tert-butyl Ether
 Concen: 5.535 ug/L
 RT: 3.38 min Scan# 635
 Delta R.T. 0.00 min
 Lab File: VU039775.D
 Acq: 07 Aug 2020 10:13

Instrument :
 MSVOA_U
 ClientSampled :

Tgt Ion	Resp	Lower	Upper
73	67574		
43	21.6	18.2	27.4
57	22.3	17.8	26.8

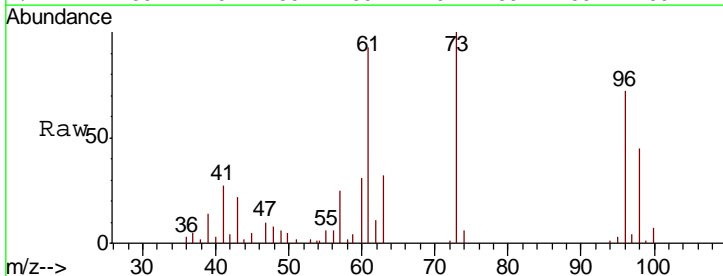


Abundance Ion 73.10 (72.80 to 73.80): VUC
 Ion 43.05 (42.75 to 43.75): VUC
 Ion 57.10 (56.80 to 57.80): VUC

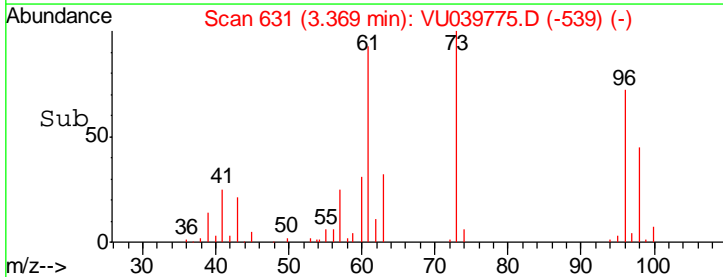
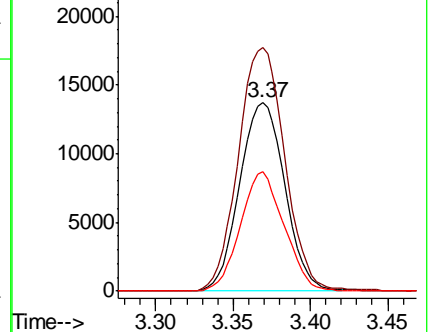


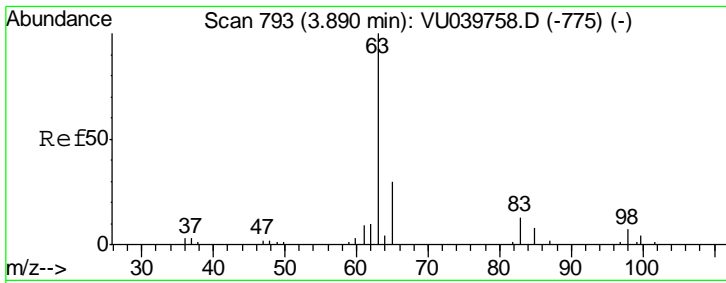
#18
 trans-1,2-Dichloroethene
 Concen: 5.450 ug/L
 RT: 3.37 min Scan# 631
 Delta R.T. -0.00 min
 Lab File: VU039775.D
 Acq: 07 Aug 2020 10:13

Tgt Ion	Resp	Lower	Upper
96	27898		
61	129.2	96.5	179.1
98	63.1	40.9	76.0



Abundance Ion 96.00 (95.70 to 96.70): VUC
 Ion 61.05 (60.75 to 61.75): VUC
 Ion 97.95 (97.65 to 98.65): VUC

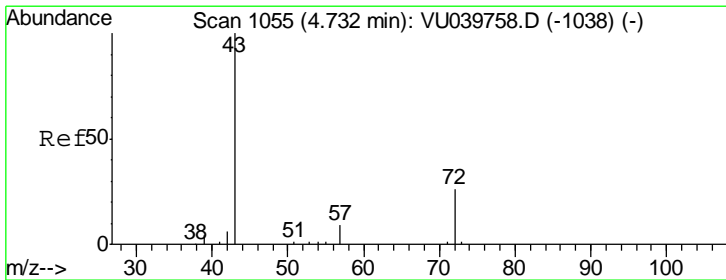
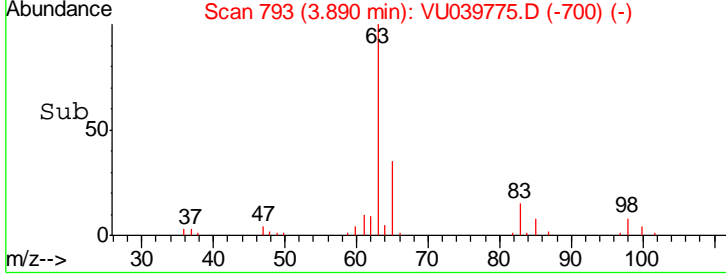
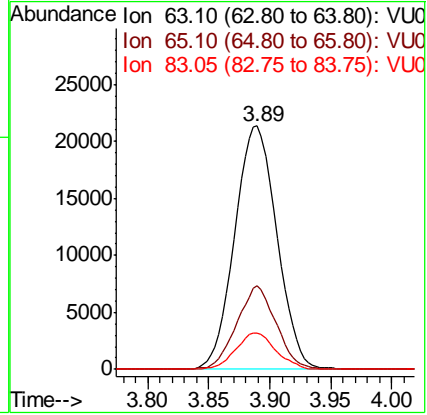
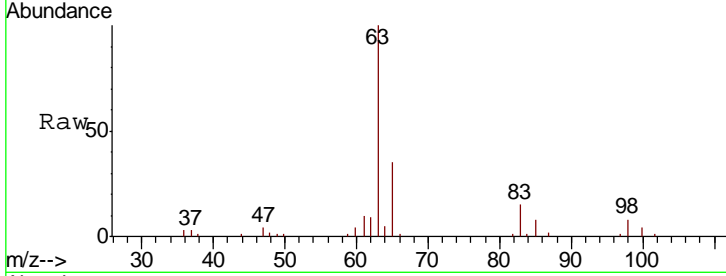




#19
 1,1-Dichloroethane
 Concen: 5.409 ug/L
 RT: 3.89 min Scan# 793
 Delta R.T. 0.00 min
 Lab File: VU039775.D
 Acq: 07 Aug 2020 10:13

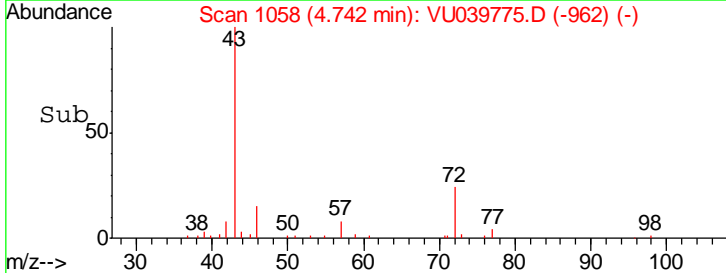
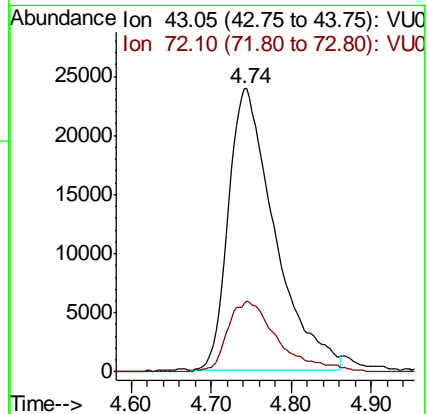
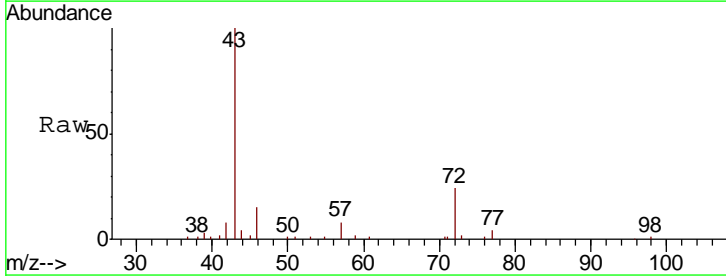
Instrument : MSVOA_U
 ClientSampled :

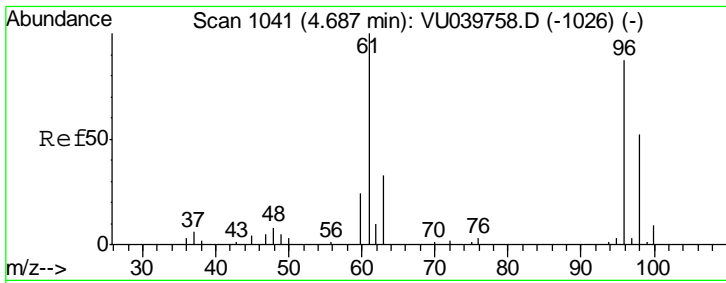
Tgt Ion	Resp	Lower	Upper
63	51118		
65	34.5	22.0	41.0
83	14.7	10.9	20.2



#21
 2-Butanone
 Concen: 55.361 ug/L
 RT: 4.74 min Scan# 1058
 Delta R.T. 0.01 min
 Lab File: VU039775.D
 Acq: 07 Aug 2020 10:13

Tgt Ion	Resp	Lower	Upper
43	94155		
72	26.6	13.0	39.0

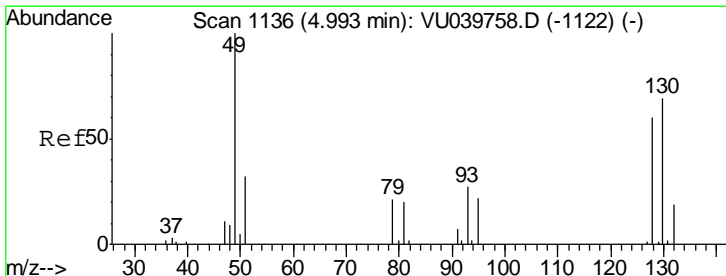
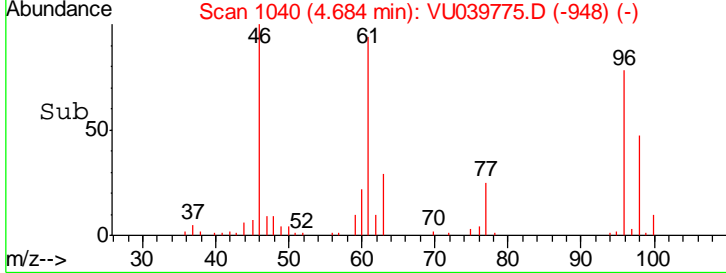
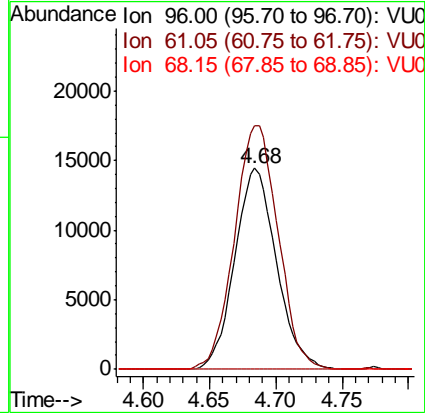
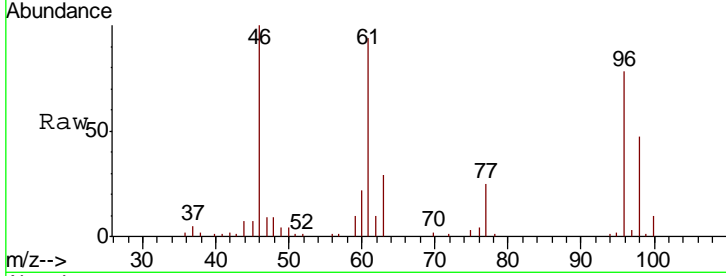




#22
 cis-1,2-Dichloroethene
 Concen: 5.690 ug/L
 RT: 4.68 min Scan# 1040
 Delta R.T. -0.00 min
 Lab File: VU039775.D
 Acq: 07 Aug 2020 10:13

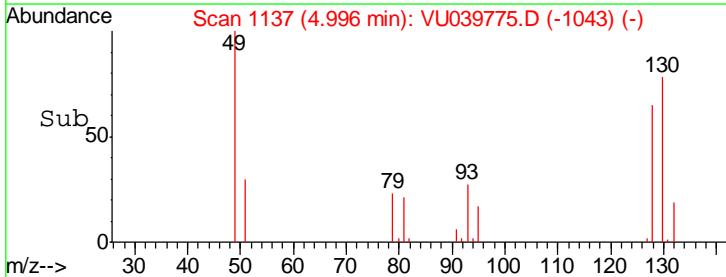
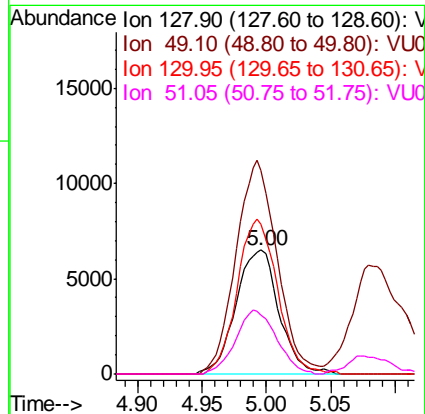
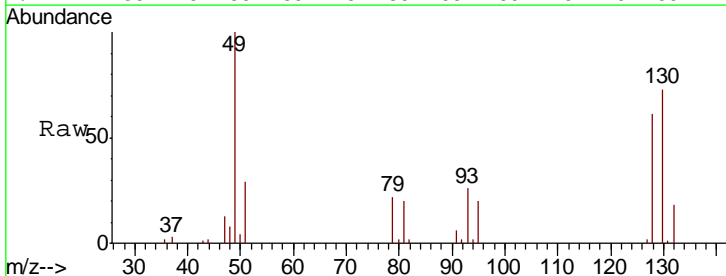
Instrument : MSVOA_U
 ClientSampled :

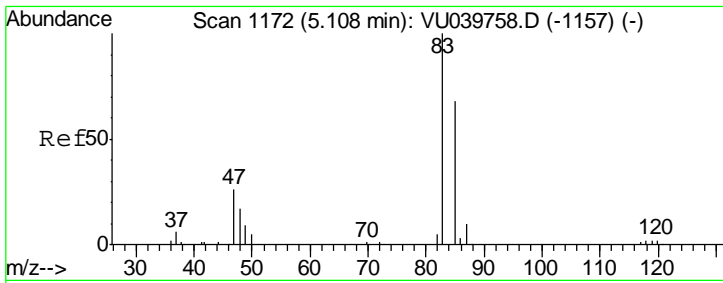
Tgt Ion	Resp	Lower	Upper
96	31681		
61	121.3	87.4	162.2
68	0.0	0.0	0.0



#23
 Bromochloromethane
 Concen: 5.760 ug/L
 RT: 5.00 min Scan# 1137
 Delta R.T. 0.00 min
 Lab File: VU039775.D
 Acq: 07 Aug 2020 10:13

Tgt Ion	Resp	Lower	Upper
128	15063		
49	164.1	110.3	204.9
130	120.5	82.0	152.4
51	47.4	40.8	61.2

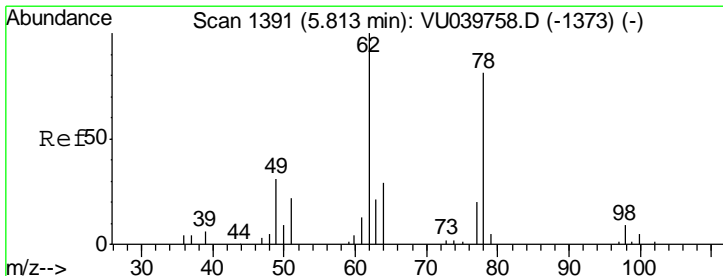
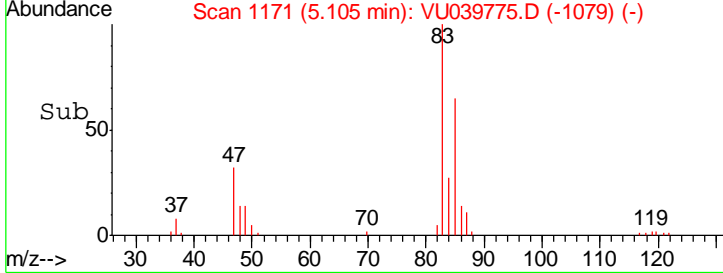
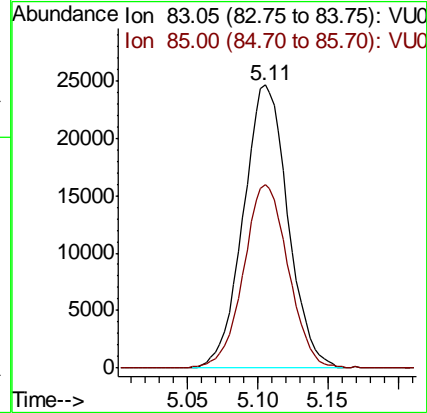
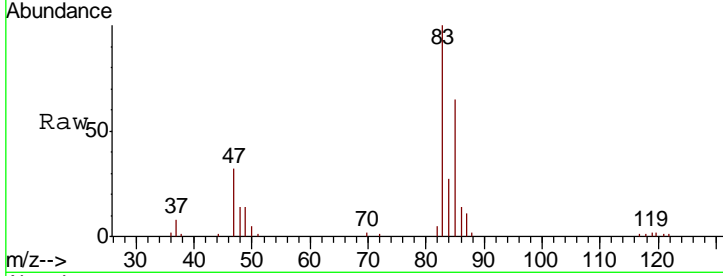




#25
 Chloroform
 Concen: 5.359 ug/L
 RT: 5.11 min Scan# 1171
 Delta R.T. -0.00 min
 Lab File: VU039775.D
 Acq: 07 Aug 2020 10:13

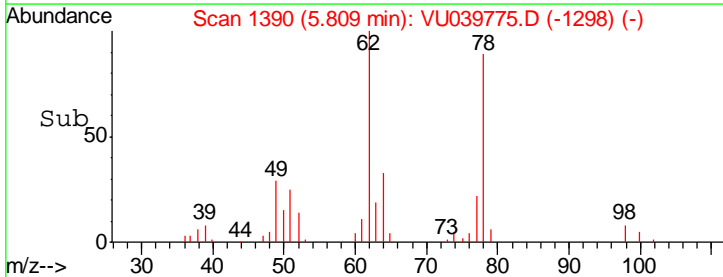
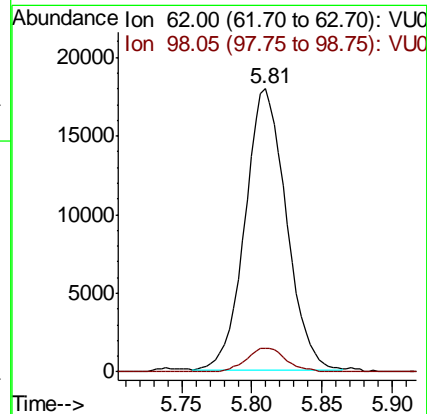
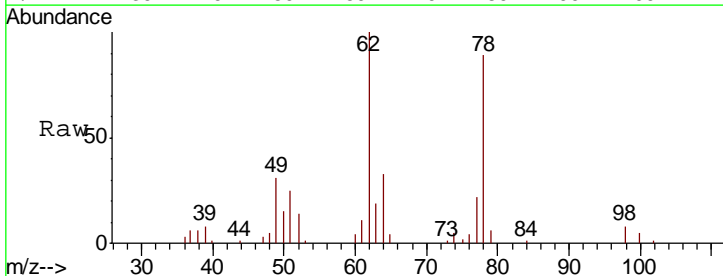
Instrument :
 MSVOA_U
 ClientSampled :

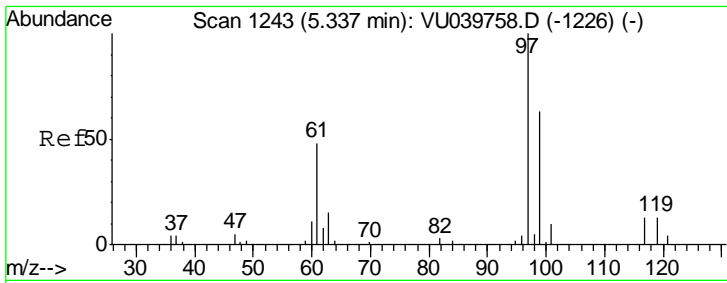
Tgt Ion	Resp	Lower	Upper
83	54445		
85	64.6	42.1	78.3



#27
 1,2-Dichloroethane
 Concen: 5.202 ug/L
 RT: 5.81 min Scan# 1390
 Delta R.T. -0.00 min
 Lab File: VU039775.D
 Acq: 07 Aug 2020 10:13

Tgt Ion	Resp	Lower	Upper
62	36421		
98	8.4	7.3	10.9

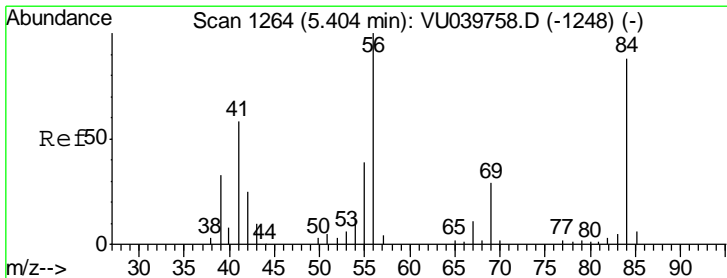
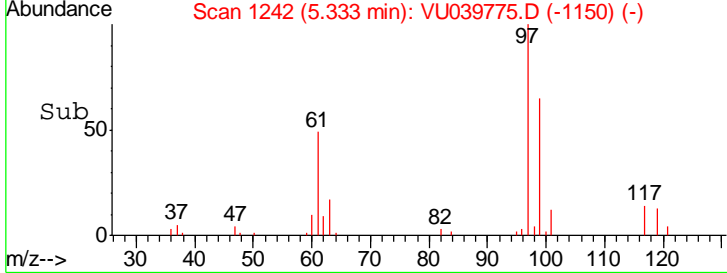
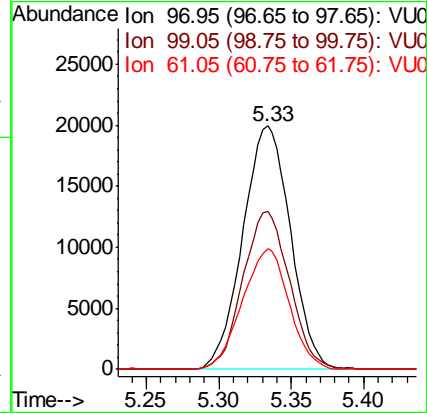
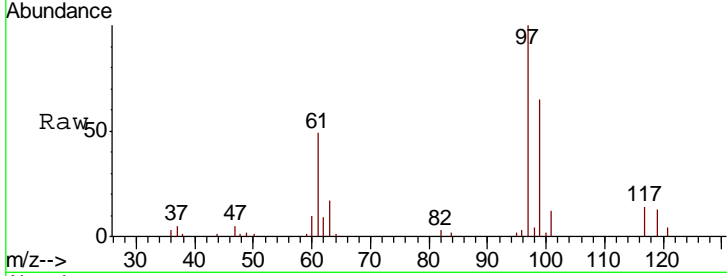




#29
 1,1,1-Trichloroethane
 Concen: 5.347 ug/L
 RT: 5.33 min Scan# 1242
 Delta R.T. -0.00 min
 Lab File: VU039775.D
 Acq: 07 Aug 2020 10:13

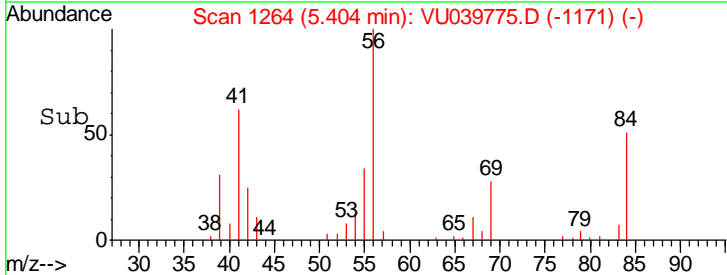
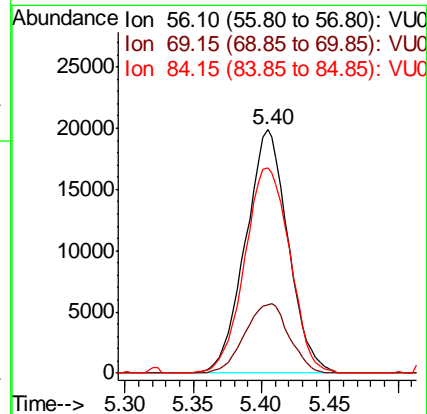
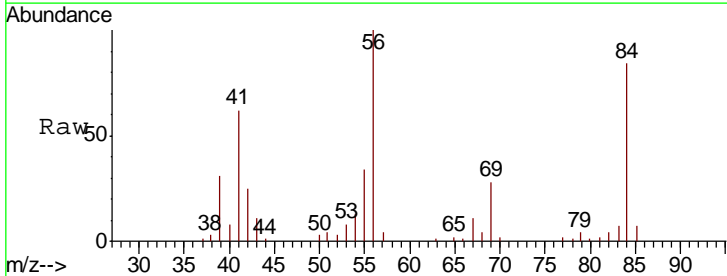
Instrument :
 MSVOA_U
 ClientSampled :

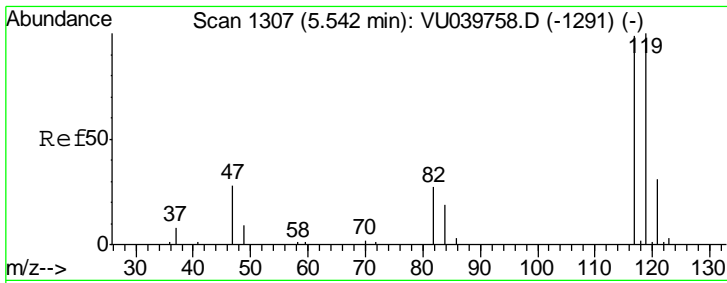
Tgt Ion	Resp	Lower	Upper
97	45571		
99	63.6	52.8	79.2
61	48.5	40.5	60.7



#30
 Cyclohexane
 Concen: 5.253 ug/L
 RT: 5.40 min Scan# 1264
 Delta R.T. 0.00 min
 Lab File: VU039775.D
 Acq: 07 Aug 2020 10:13

Tgt Ion	Resp	Lower	Upper
56	43081		
69	29.6	24.4	36.6
84	89.5	71.3	106.9

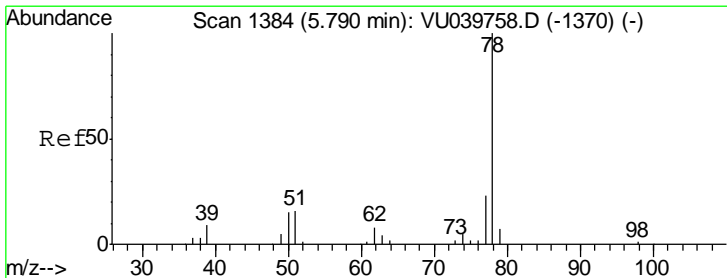
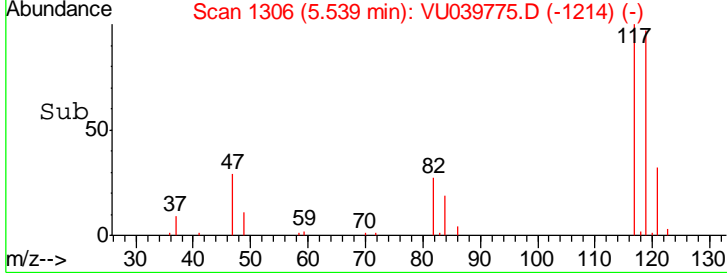
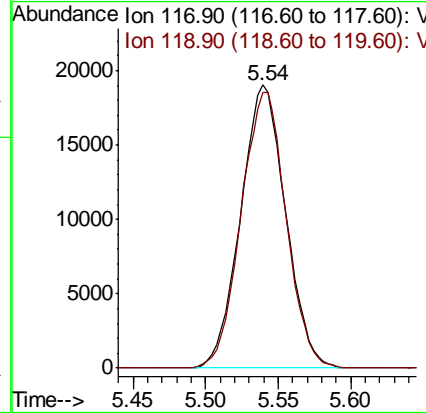
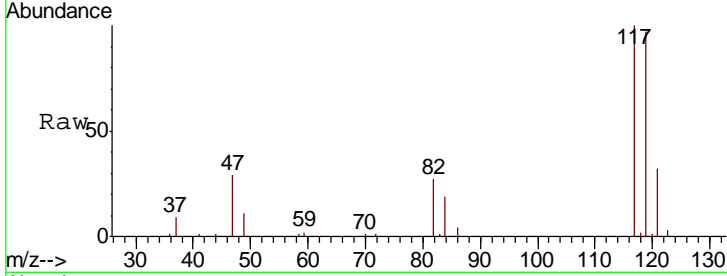




#31
 Carbon tetrachloride
 Concen: 5.245 ug/L
 RT: 5.54 min Scan# 1306
 Delta R.T. -0.00 min
 Lab File: VU039775.D
 Acq: 07 Aug 2020 10:13

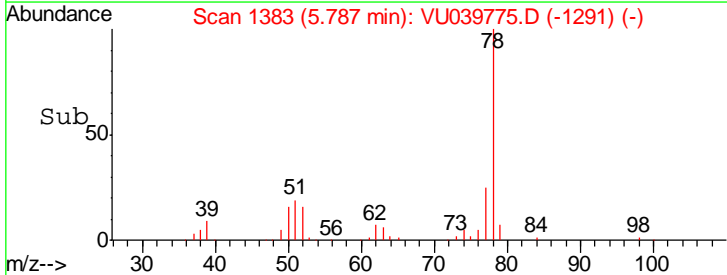
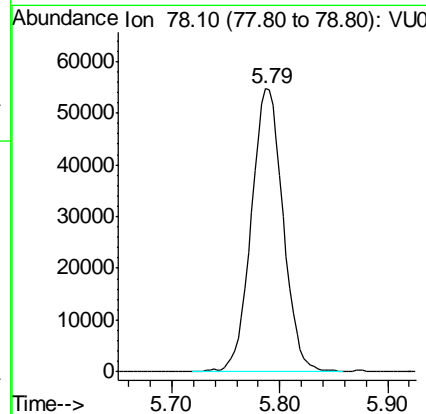
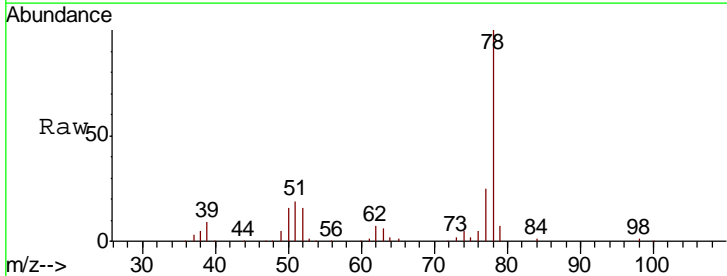
Instrument :
 MSVOA_U
 ClientSampled :

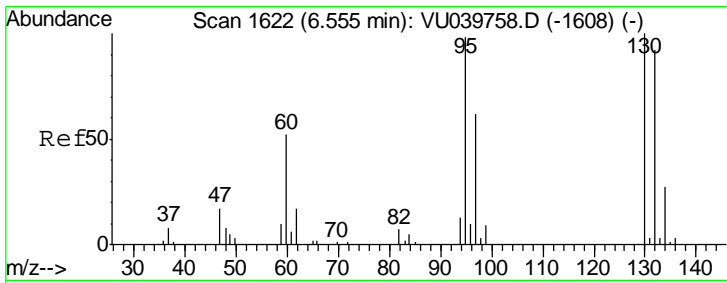
Tgt Ion	Resp	Lower	Upper
117	41017		
119	97.6	75.5	113.3



#33
 Benzene
 Concen: 5.375 ug/L
 RT: 5.79 min Scan# 1383
 Delta R.T. -0.00 min
 Lab File: VU039775.D
 Acq: 07 Aug 2020 10:13

Tgt Ion: 78 Resp: 111887

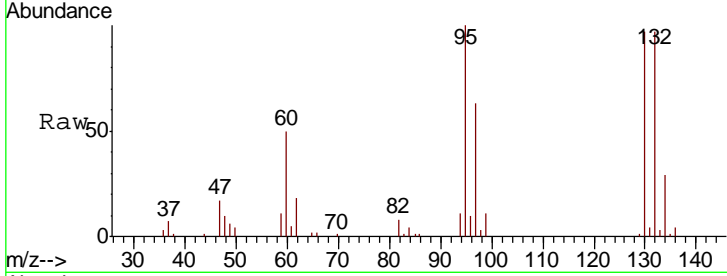




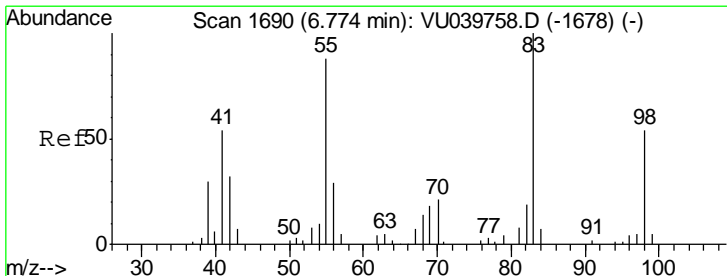
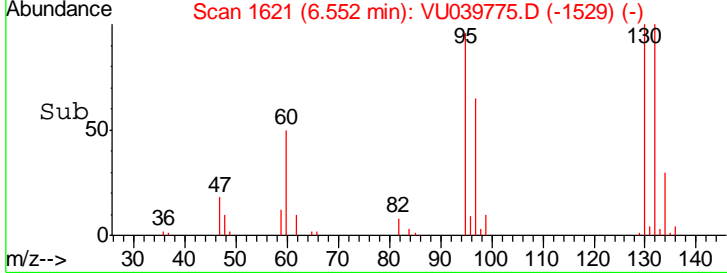
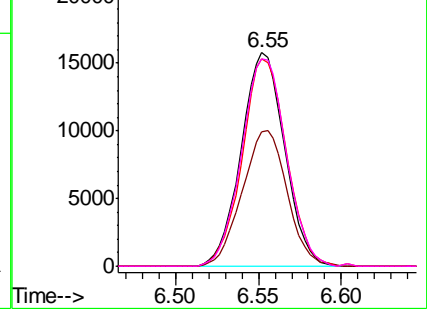
#34
 Trichloroethene
 Concen: 5.324 ug/L
 RT: 6.55 min Scan# 1621
 Delta R.T. -0.00 min
 Lab File: VU039775.D
 Acq: 07 Aug 2020 10:13

Instrument :
 MSVOA_U
 ClientSampled :

Tgt Ion	Resp	Lower	Upper
95	28781		
97	63.1	44.0	81.8
132	97.2	71.7	133.3
130	97.2	71.1	132.1

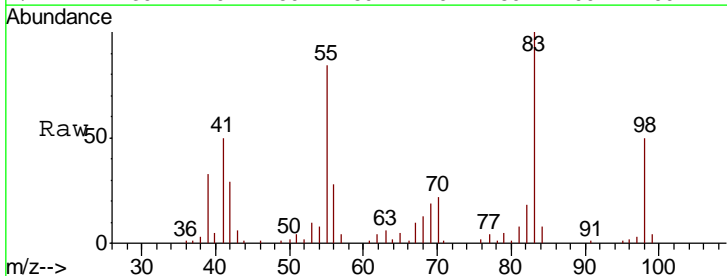


Abundance Ion 95.00 (94.70 to 95.70): VU039775.D (-1529) (-)
 Ion 96.95 (96.65 to 97.65): VU039775.D (-1529) (-)
 Ion 131.95 (131.65 to 132.65): VU039775.D (-1529) (-)
 Ion 129.95 (129.65 to 130.65): VU039775.D (-1529) (-)

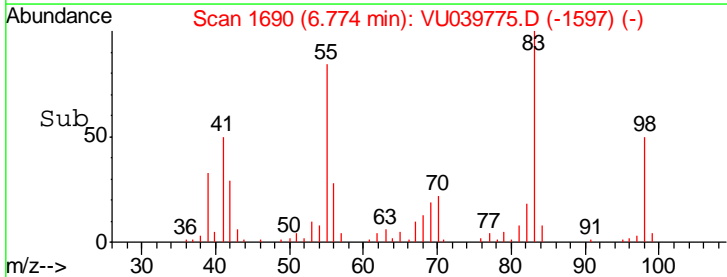
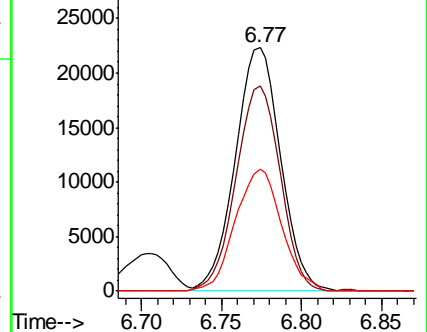


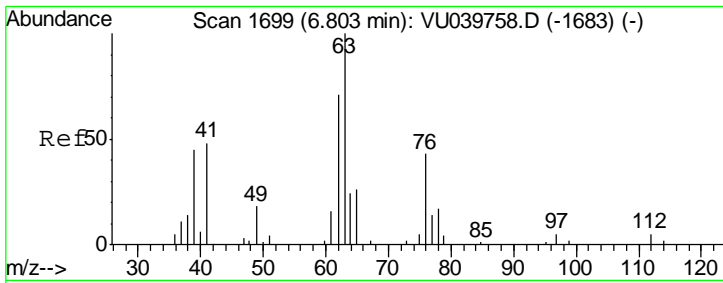
#35
 Methylcyclohexane
 Concen: 5.016 ug/L
 RT: 6.77 min Scan# 1690
 Delta R.T. 0.00 min
 Lab File: VU039775.D
 Acq: 07 Aug 2020 10:13

Tgt Ion	Resp	Lower	Upper
83	43282		
55	82.1	59.4	89.0
98	51.1	39.0	58.4



Abundance Ion 83.15 (82.85 to 83.85): VU039775.D (-1597) (-)
 Ion 55.10 (54.80 to 55.80): VU039775.D (-1597) (-)
 Ion 98.15 (97.85 to 98.85): VU039775.D (-1597) (-)

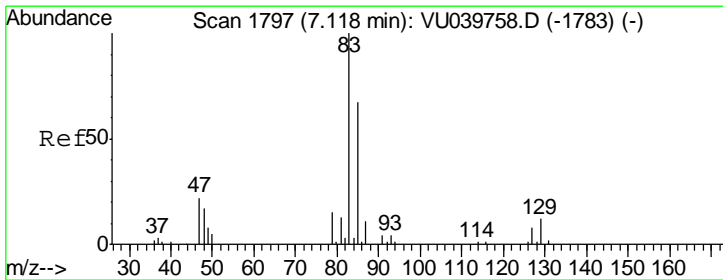
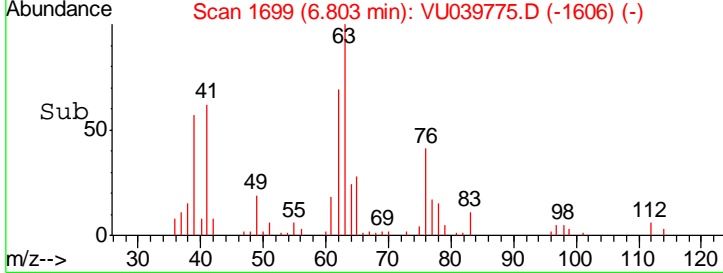
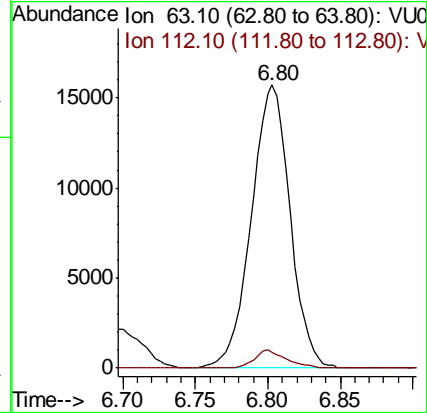
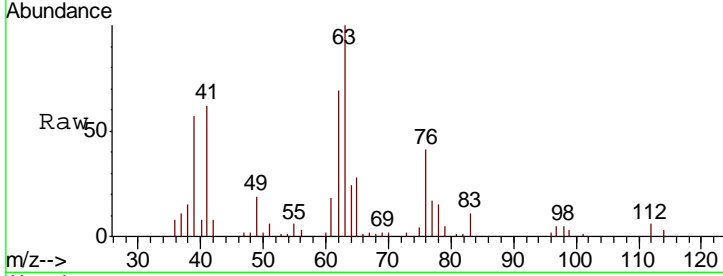




#37
 1,2-Dichloropropane
 Concen: 5.282 ug/L
 RT: 6.80 min Scan# 1699
 Delta R.T. 0.00 min
 Lab File: VU039775.D
 Acq: 07 Aug 2020 10:13

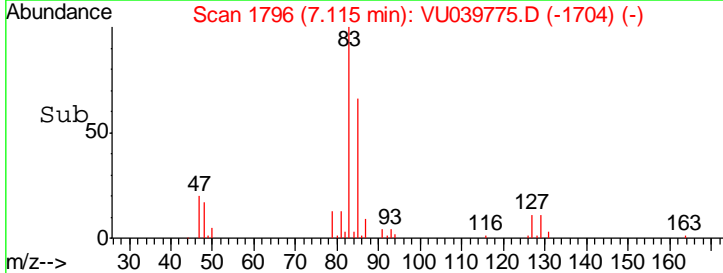
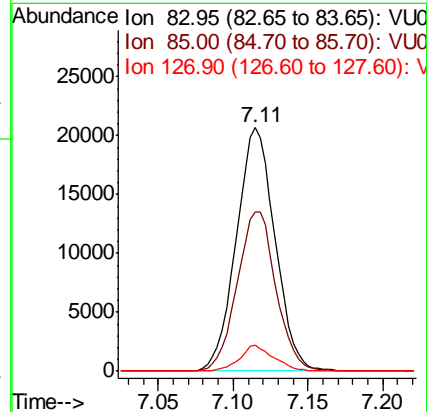
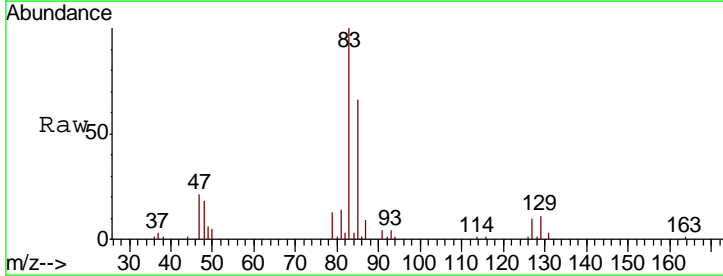
Instrument :
 MSVOA_U
 ClientSampled :

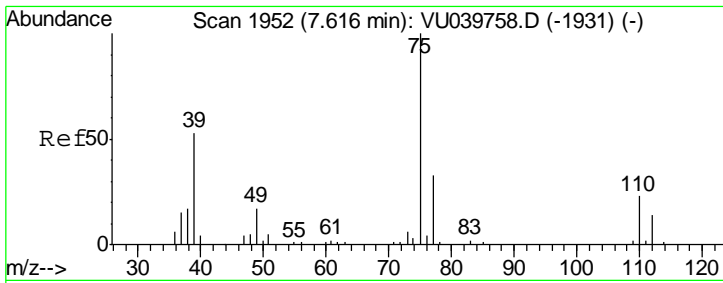
Tgt Ion	Resp	Lower	Upper
63	100		
112	5.2	3.8	5.6



#38
 Bromodichloromethane
 Concen: 5.149 ug/L
 RT: 7.11 min Scan# 1796
 Delta R.T. -0.00 min
 Lab File: VU039775.D
 Acq: 07 Aug 2020 10:13

Tgt Ion	Resp	Lower	Upper
83	100		
85	65.6	45.3	84.1
127	10.5	7.5	11.3

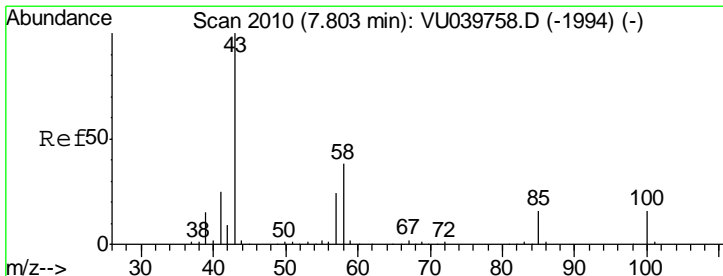
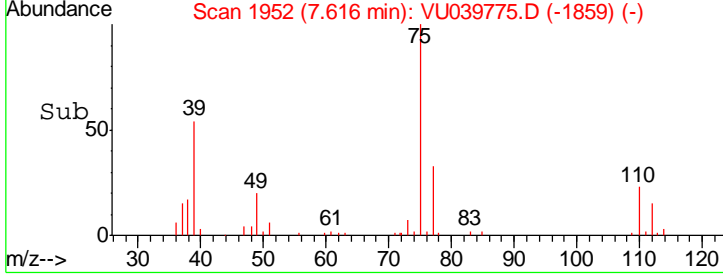
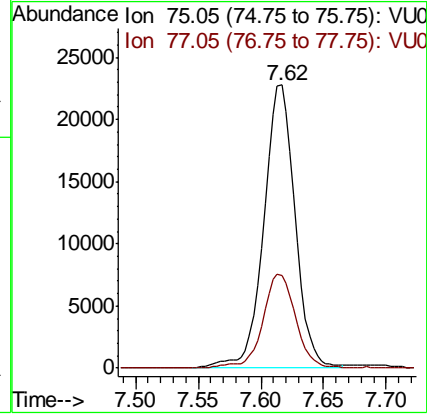
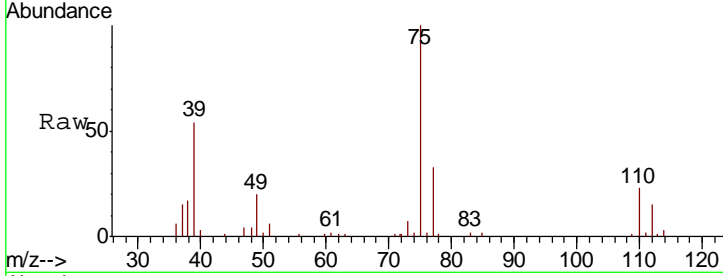




#39
 cis-1,3-Dichloropropene
 Concen: 5.259 ug/L
 RT: 7.62 min Scan# 1952
 Delta R.T. 0.00 min
 Lab File: VU039775.D
 Acq: 07 Aug 2020 10:13

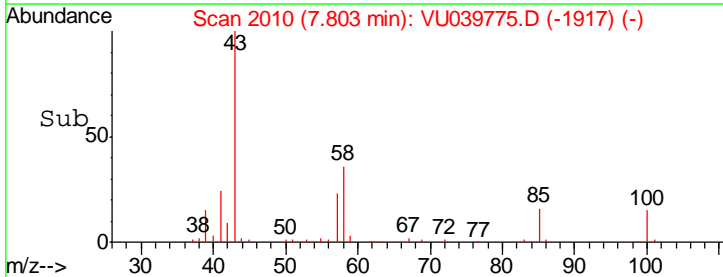
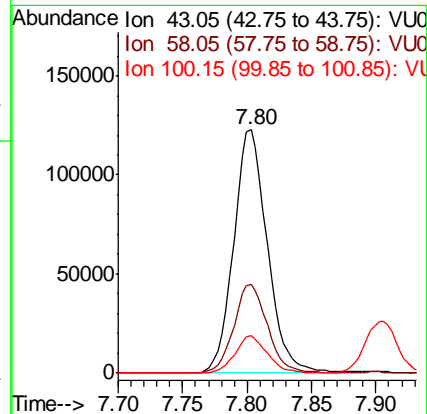
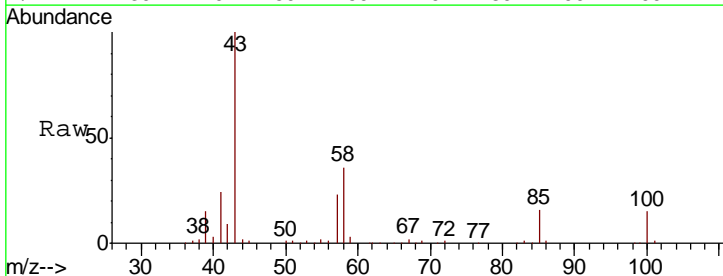
Instrument :
 MSVOA_U
 ClientSampled :

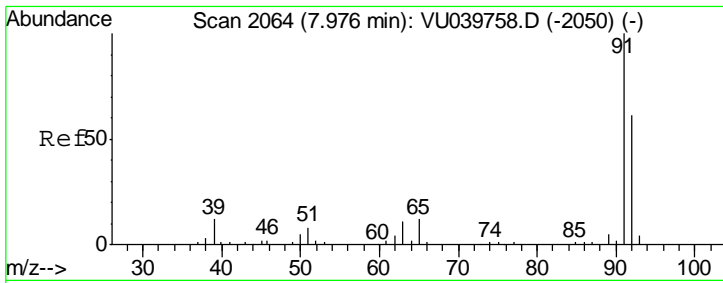
Tgt Ion	Resp	Lower	Upper
75	39654		
77	32.8	22.4	41.6



#40
 4-Methyl-2-pentanone
 Concen: 53.927 ug/L
 RT: 7.80 min Scan# 2010
 Delta R.T. 0.00 min
 Lab File: VU039775.D
 Acq: 07 Aug 2020 10:13

Tgt Ion	Resp	Lower	Upper
43	222803		
58	36.5	29.4	44.2
100	14.9	11.7	17.5

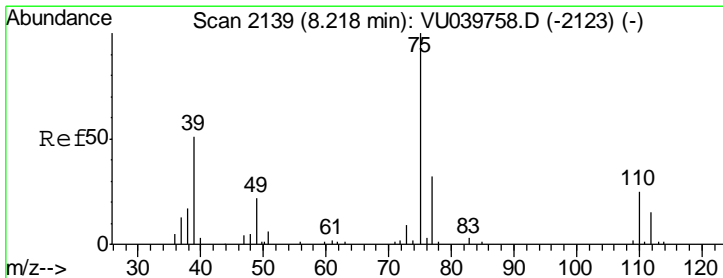
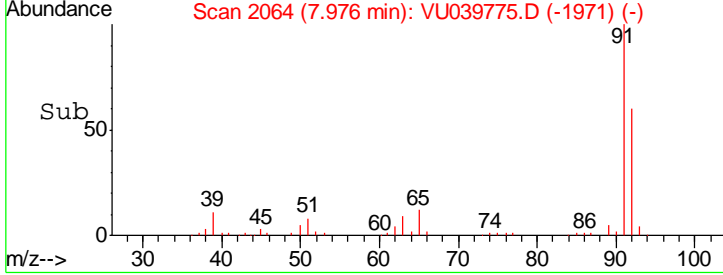
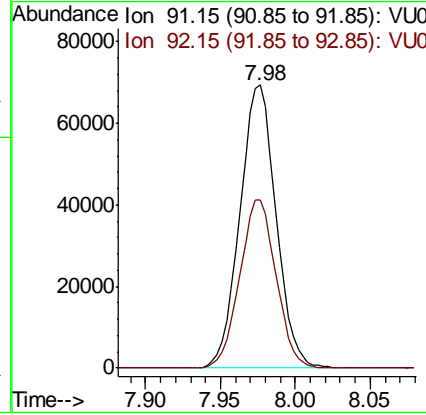
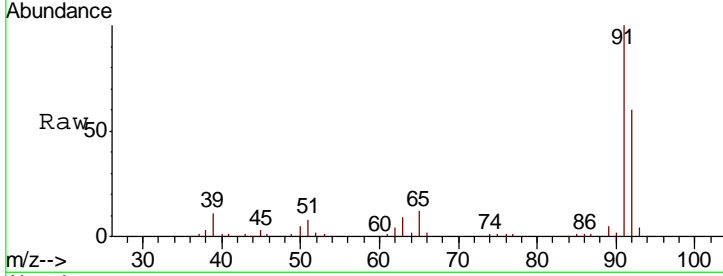




#42
 Toluene
 Concen: 5.346 ug/L
 RT: 7.98 min Scan# 2064
 Delta R.T. 0.00 min
 Lab File: VU039775.D
 Acq: 07 Aug 2020 10:13

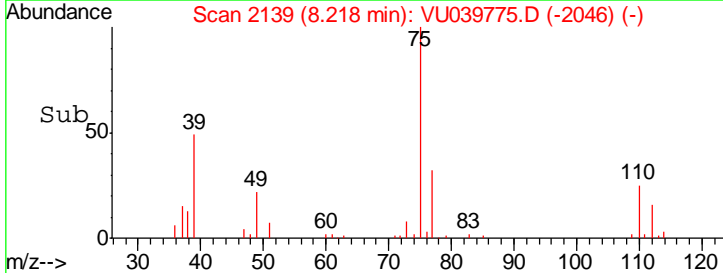
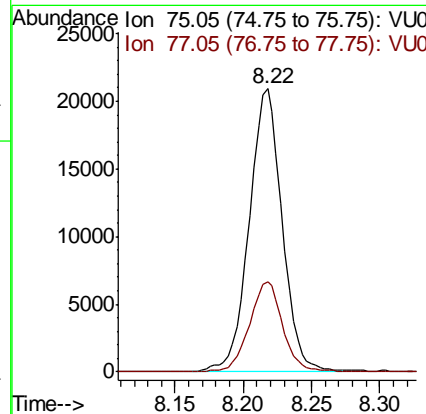
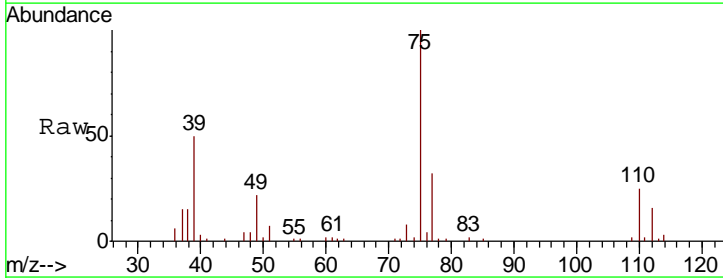
Instrument :
 MSVOA_U
 ClientSampled :

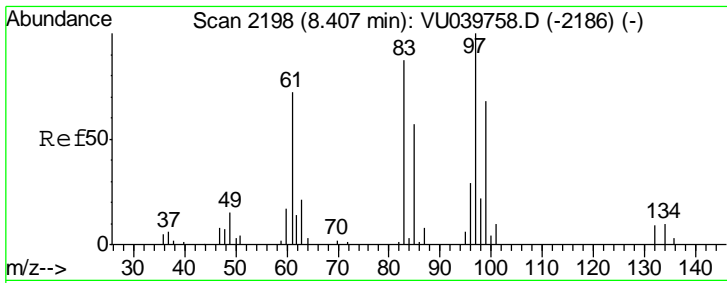
Tgt Ion	Resp	Lower	Upper
91	116950		
92	59.6	41.6	77.3



#44
 trans-1,3-Dichloropropene
 Concen: 5.164 ug/L
 RT: 8.22 min Scan# 2139
 Delta R.T. 0.00 min
 Lab File: VU039775.D
 Acq: 07 Aug 2020 10:13

Tgt Ion	Resp	Lower	Upper
75	35076		
77	31.9	21.6	40.2

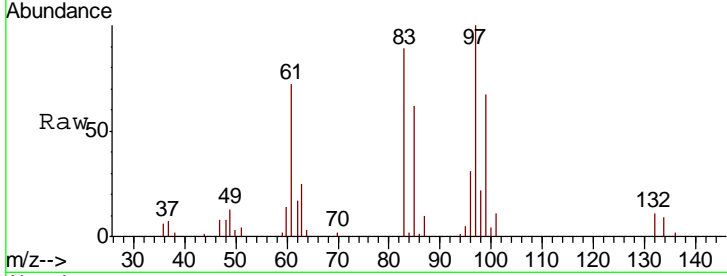




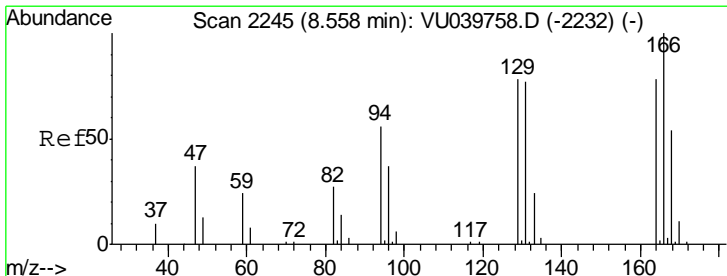
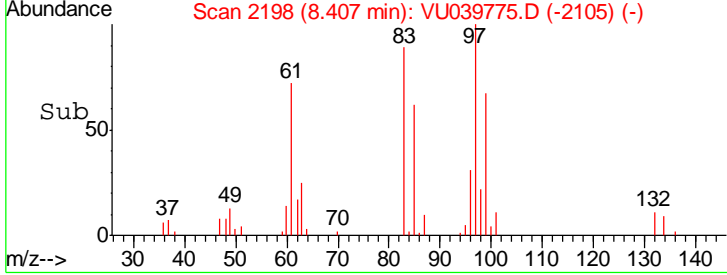
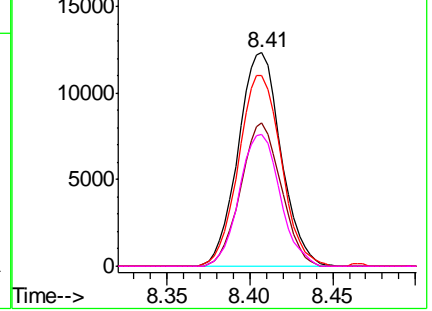
#45
 1,1,2-Trichloroethane
 Concen: 5.317 ug/L
 RT: 8.41 min Scan# 2198
 Delta R.T. 0.00 min
 Lab File: VU039775.D
 Acq: 07 Aug 2020 10:13

Instrument :
 MSVOA_U
 ClientSampled :

Tgt Ion	Resp	Lower	Upper
97	22113		
99	67.2	42.0	78.0
83	89.2	55.2	102.4
85	61.7	37.0	68.6

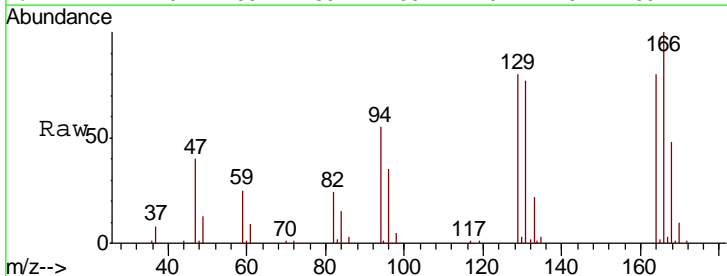


Abundance Ion 96.95 (96.65 to 97.65): VU0
 Ion 99.05 (98.75 to 99.75): VU0
 Ion 82.95 (82.65 to 83.65): VU0
 Ion 85.00 (84.70 to 85.70): VU0

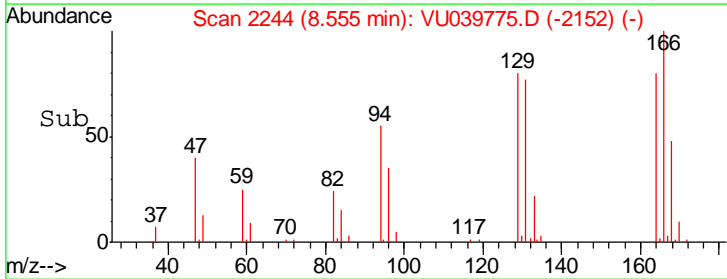
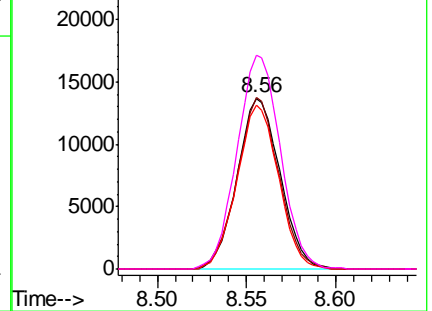


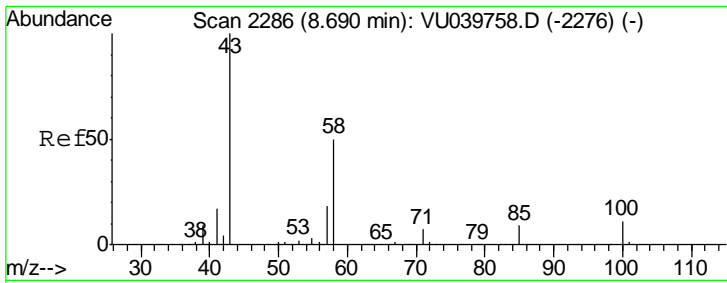
#47
 Tetrachloroethene
 Concen: 5.127 ug/L
 RT: 8.56 min Scan# 2244
 Delta R.T. -0.00 min
 Lab File: VU039775.D
 Acq: 07 Aug 2020 10:13

Tgt Ion	Resp	Lower	Upper
164	22865		
164	100		
129	100.4	65.9	122.5
131	95.7	68.1	126.5
166	125.0	84.5	156.9



Abundance Ion 163.90 (163.60 to 164.60): V
 Ion 128.95 (128.65 to 129.65): V
 Ion 130.95 (130.65 to 131.65): V
 Ion 165.90 (165.60 to 166.60): V



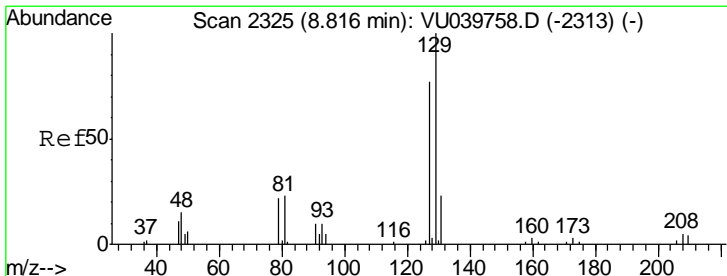
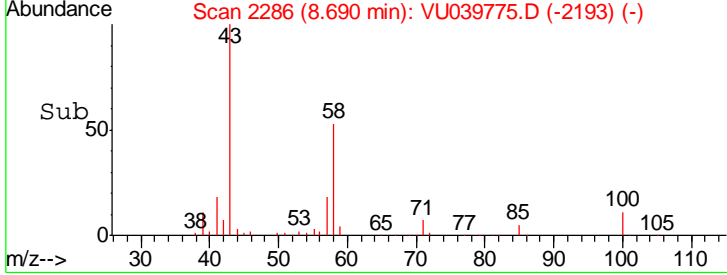
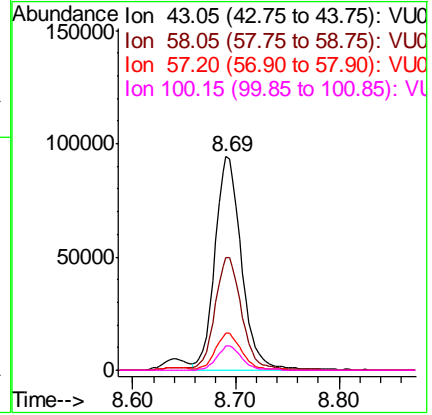
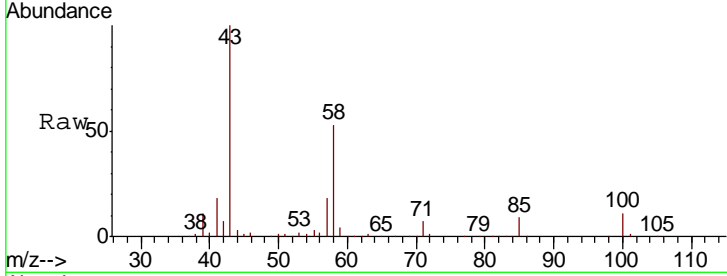


#48
 2-Hexanone
 Concen: 56.029 ug/L
 RT: 8.69 min Scan# 2286
 Delta R.T. 0.00 min
 Lab File: VU039775.D
 Acq: 07 Aug 2020 10:13

Instrument :
 MSVOA_U
 ClientSampled :

Tot Ion: 43 Resp: 167161

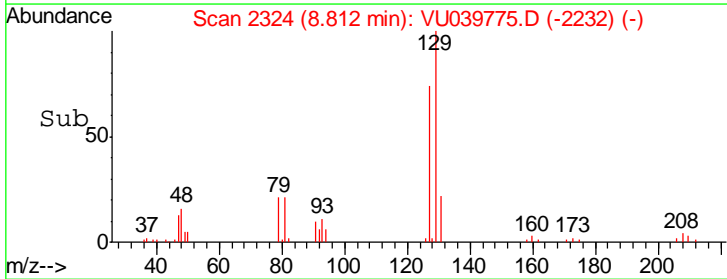
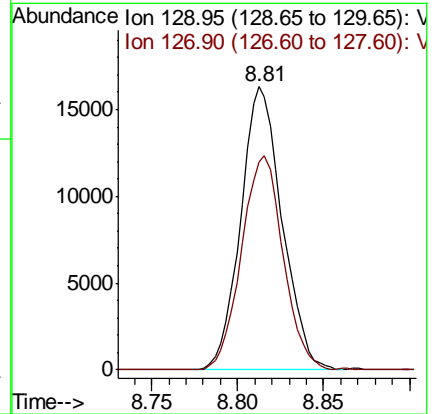
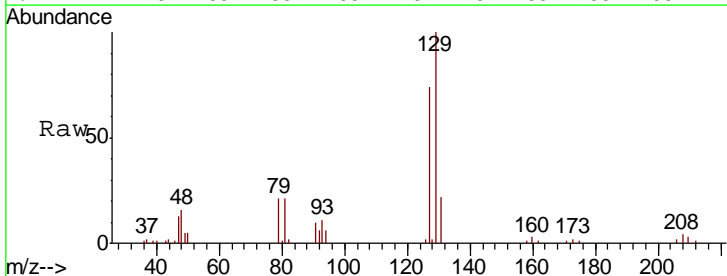
Ion	Ratio	Lower	Upper
43	100		
58	52.6	41.8	62.8
57	17.6	14.2	21.4
100	10.9	9.4	14.2

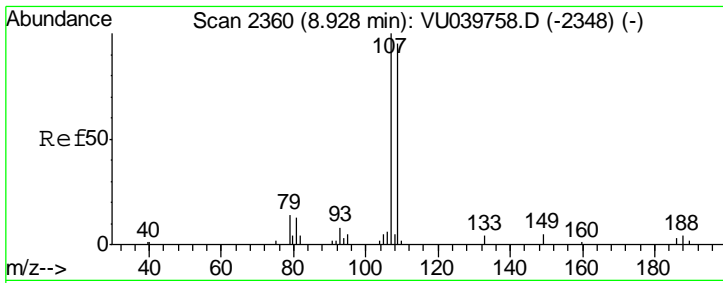


#49
 Dibromochloromethane
 Concen: 5.335 ug/L
 RT: 8.81 min Scan# 2324
 Delta R.T. -0.00 min
 Lab File: VU039775.D
 Acq: 07 Aug 2020 10:13

Tgt Ion: 129 Resp: 27229

Ion	Ratio	Lower	Upper
129	100		
127	73.6	53.0	98.4

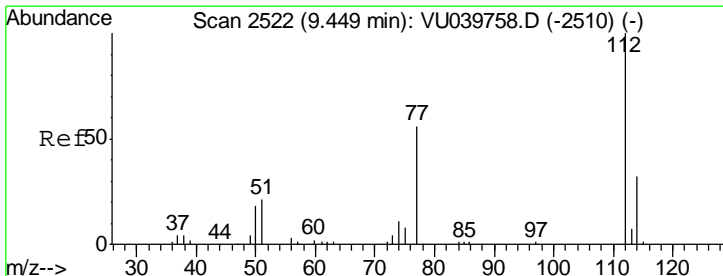
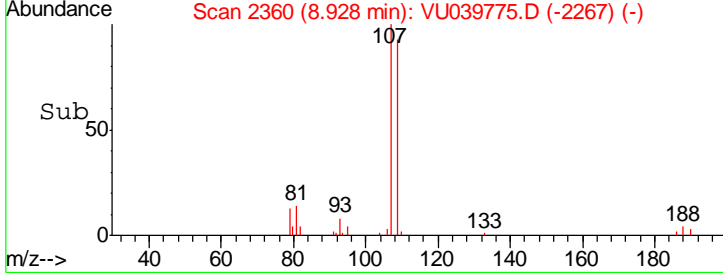
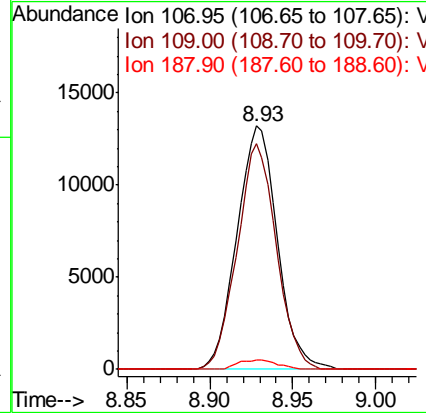
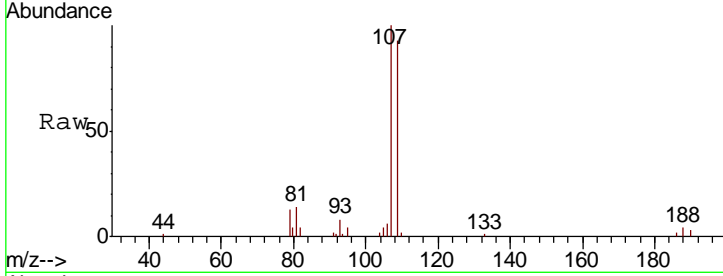




#50
 1,2-Dibromoethane
 Concen: 5.468 ug/L
 RT: 8.93 min Scan# 2360
 Delta R.T. 0.00 min
 Lab File: VU039775.D
 Acq: 07 Aug 2020 10:13

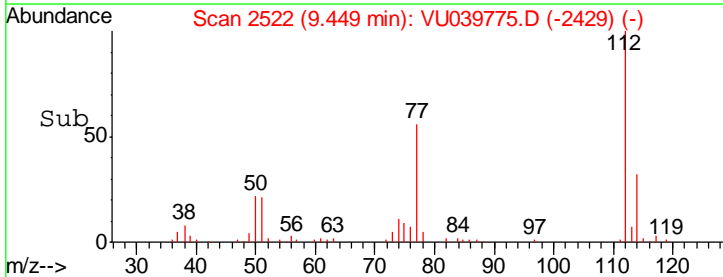
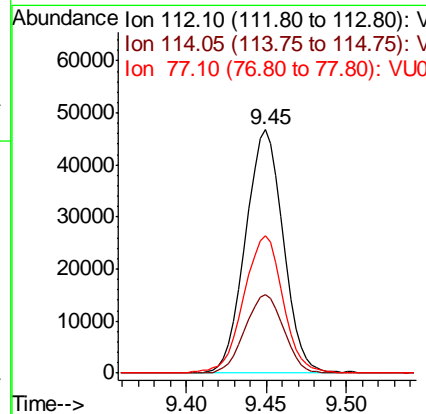
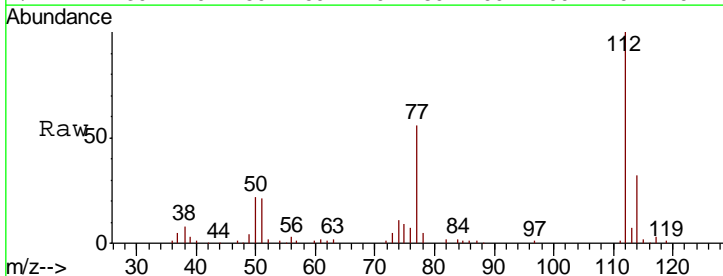
Instrument :
 MSVOA_U
 ClientSampled :

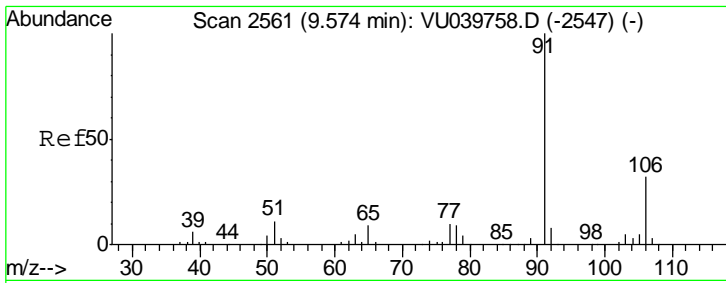
Tgt Ion	Resp	Lower	Upper
107	22299		
109	92.9	63.9	118.7
188	3.6	2.9	4.3



#51
 Chlorobenzene
 Concen: 5.131 ug/L
 RT: 9.45 min Scan# 2522
 Delta R.T. 0.00 min
 Lab File: VU039775.D
 Acq: 07 Aug 2020 10:13

Tgt Ion	Resp	Lower	Upper
112	75428		
114	32.3	23.2	43.0
77	56.4	47.8	71.6

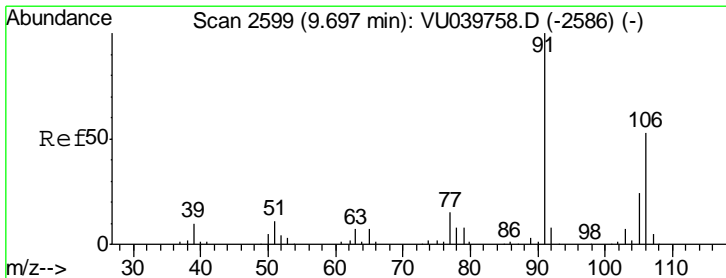
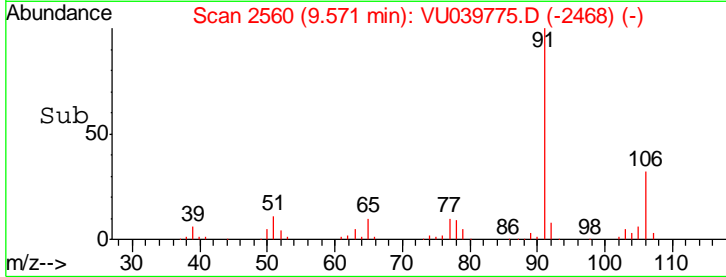
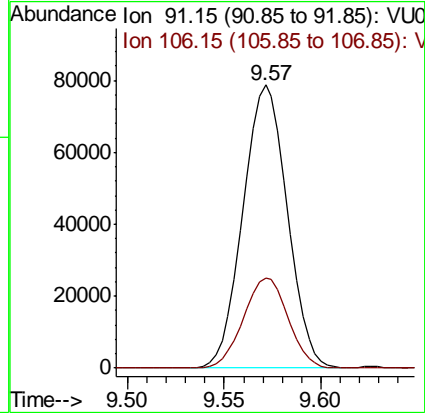
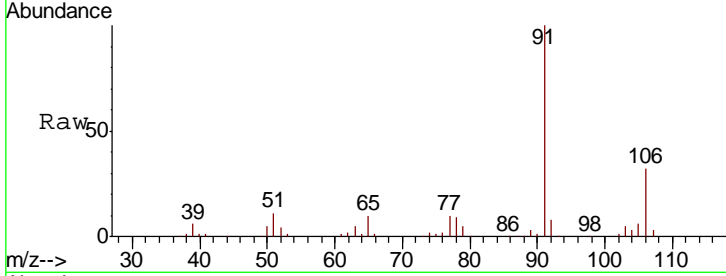




#52
 Ethylbenzene
 Concen: 5.120 ug/L
 RT: 9.57 min Scan# 2560
 Delta R.T. -0.00 min
 Lab File: VU039775.D
 Acq: 07 Aug 2020 10:13

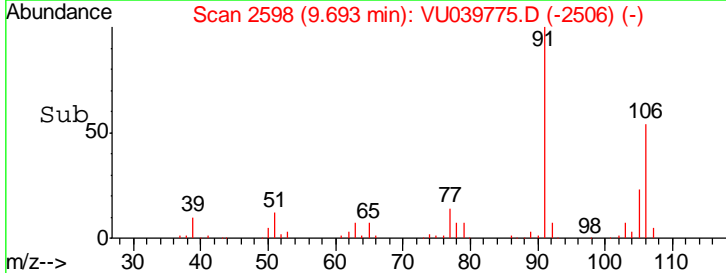
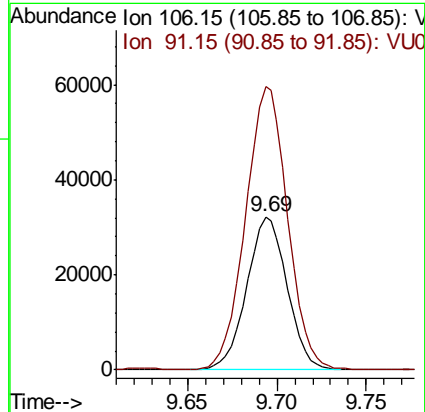
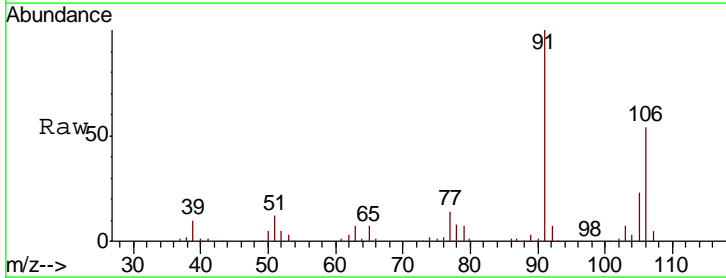
Instrument : MSVOA_U
 ClientSampled :

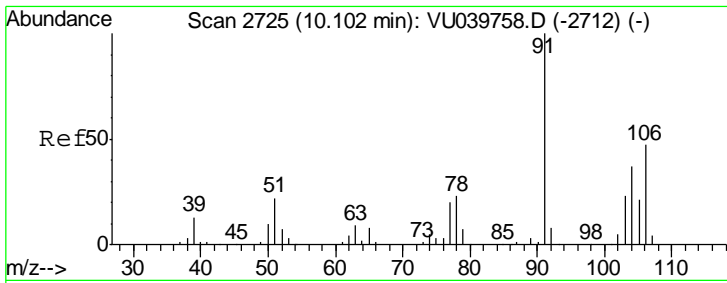
Tgt Ion: 91 Resp: 125348
 Ion Ratio Lower Upper
 91 100
 106 32.0 22.8 42.4



#53
 m,p-Xylene
 Concen: 5.466 ug/L
 RT: 9.69 min Scan# 2598
 Delta R.T. -0.00 min
 Lab File: VU039775.D
 Acq: 07 Aug 2020 10:13

Tgt Ion: 106 Resp: 50957
 Ion Ratio Lower Upper
 106 100
 91 185.2 135.5 251.7

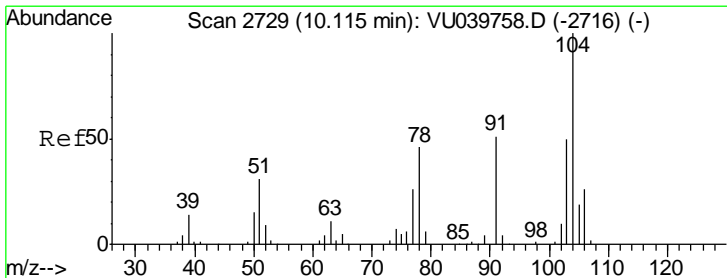
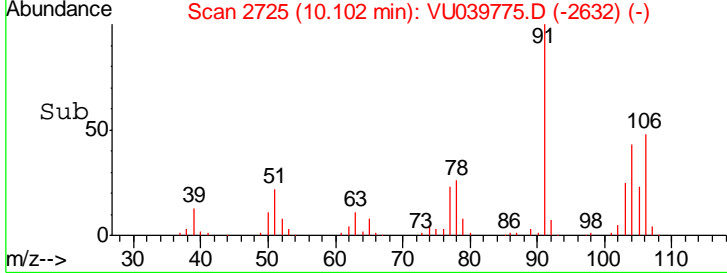
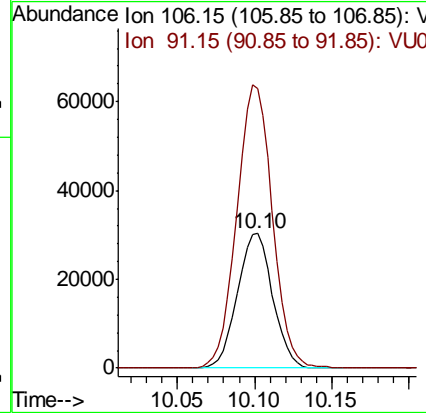
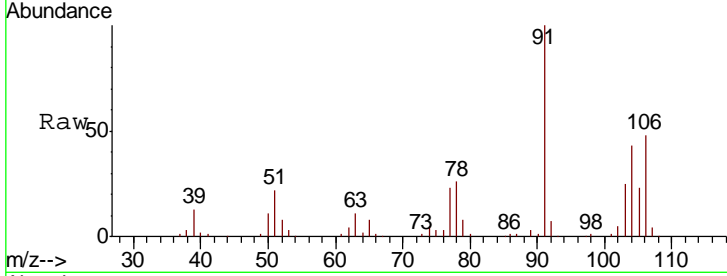




#54
 o-Xylene
 Concen: 5.248 ug/L
 RT: 10.10 min Scan# 2725
 Delta R.T. 0.00 min
 Lab File: VU039775.D
 Acq: 07 Aug 2020 10:13

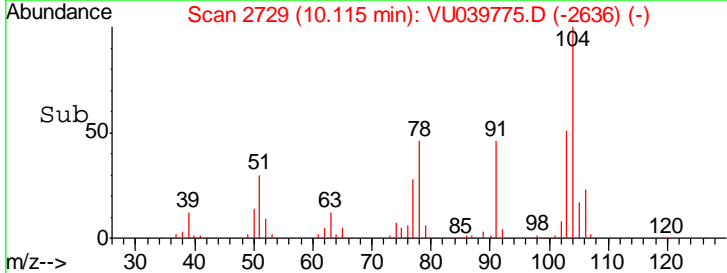
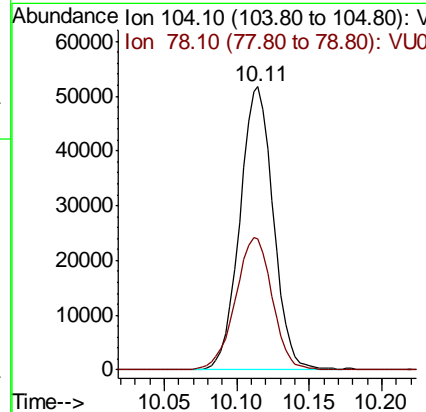
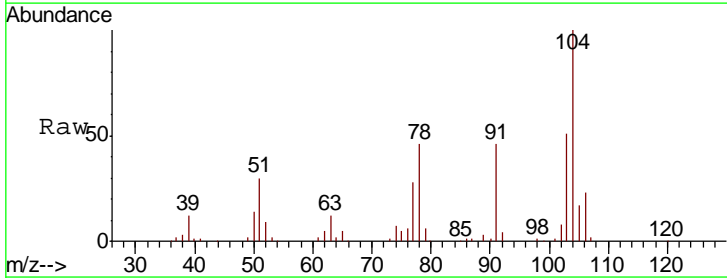
Instrument : MSVOA_U
 ClientSampled :

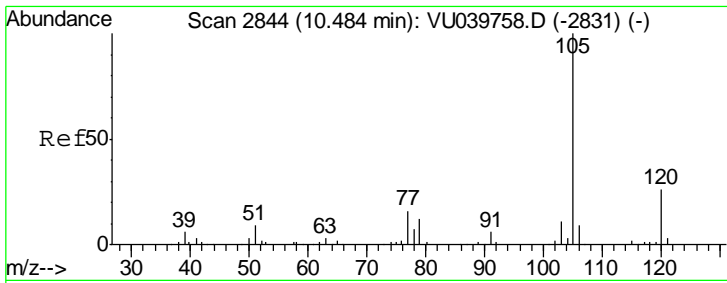
Tgt Ion:106 Resp: 47908
 Ion Ratio Lower Upper
 106 100
 91 207.5 140.8 261.6



#55
 Styrene
 Concen: 5.389 ug/L
 RT: 10.11 min Scan# 2729
 Delta R.T. 0.00 min
 Lab File: VU039775.D
 Acq: 07 Aug 2020 10:13

Tgt Ion:104 Resp: 82843
 Ion Ratio Lower Upper
 104 100
 78 46.1 32.3 60.1

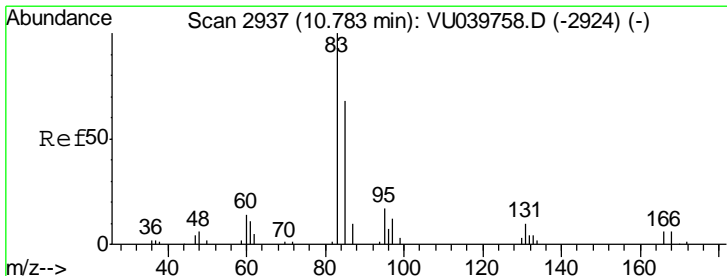
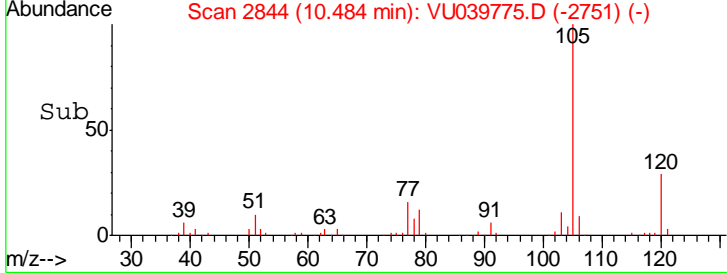
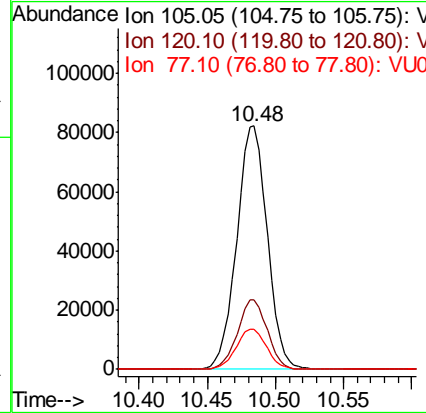
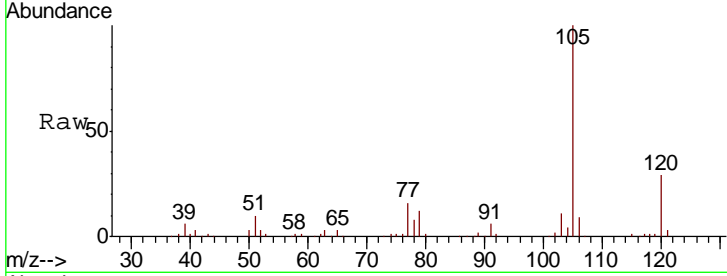




#56
 Isopropylbenzene
 Concen: 5.234 ug/L
 RT: 10.48 min Scan# 2844
 Delta R.T. 0.00 min
 Lab File: VU039775.D
 Acq: 07 Aug 2020 10:13

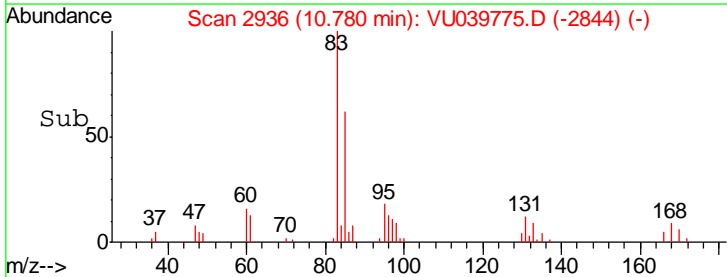
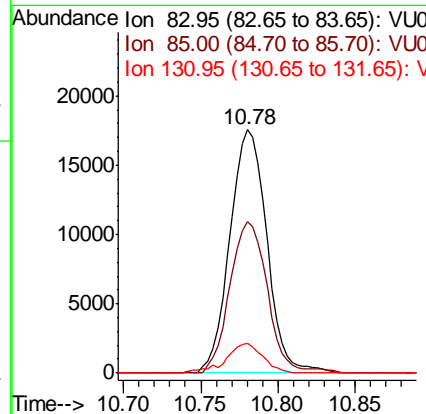
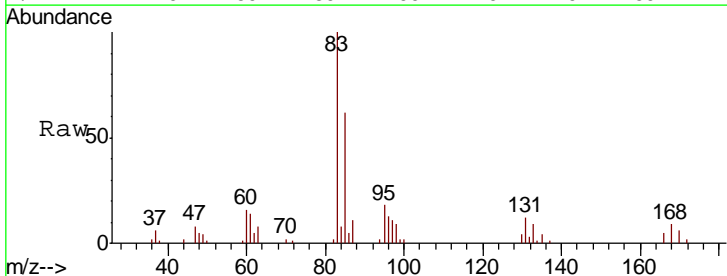
Instrument : MSVOA_U
 ClientSampled :

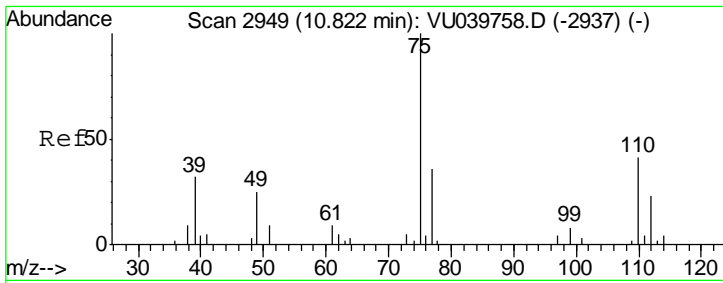
Tgt Ion	Resp	Lower	Upper
105	127695		
120	27.8	21.0	31.6
77	16.6	12.9	19.3



#58
 1,1,2,2-Tetrachloroethane
 Concen: 5.076 ug/L
 RT: 10.78 min Scan# 2936
 Delta R.T. -0.00 min
 Lab File: VU039775.D
 Acq: 07 Aug 2020 10:13

Tgt Ion	Resp	Lower	Upper
83	29043		
85	62.2	44.4	82.4
131	12.1	7.4	11.0

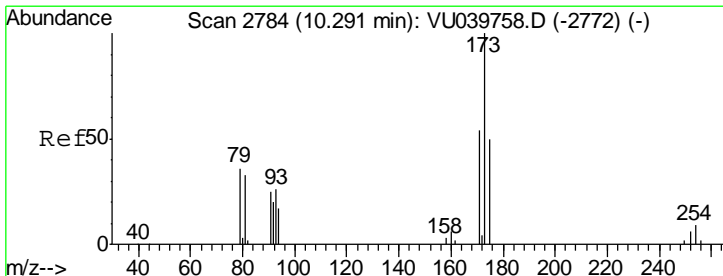
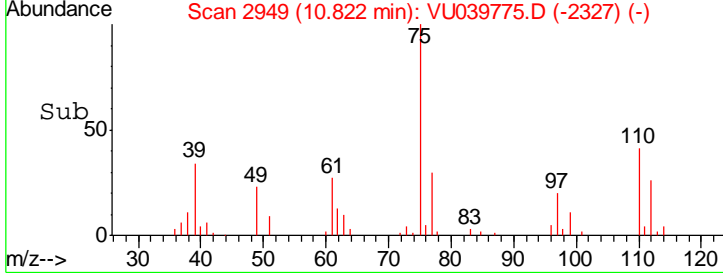
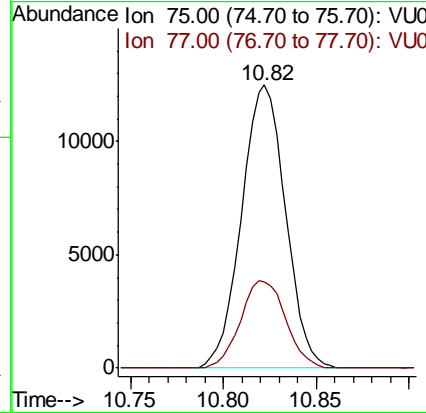
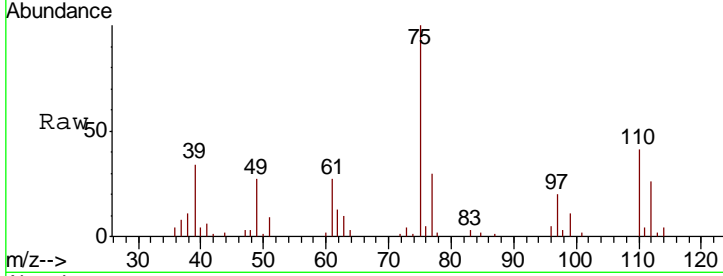




#59
 1,2,3-Trichloropropane
 Concen: 5.149 ug/L
 RT: 10.82 min Scan# 2949
 Delta R.T. 0.00 min
 Lab File: VU039775.D
 Acq: 07 Aug 2020 10:13

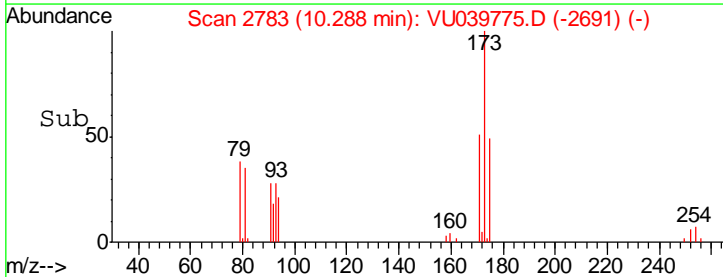
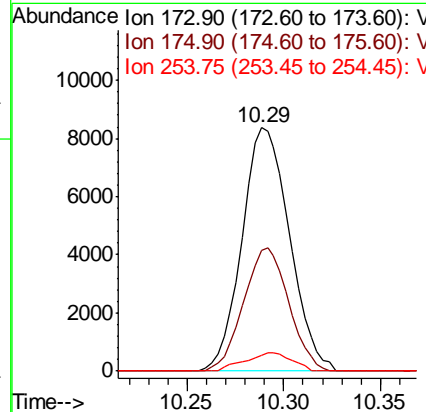
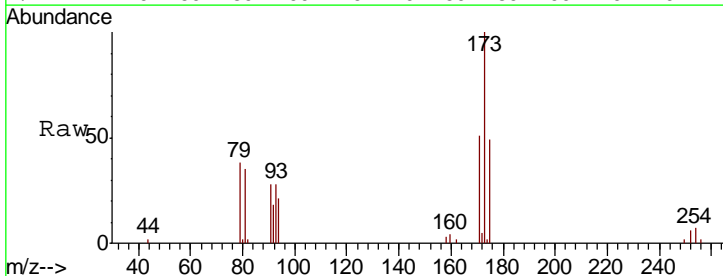
Instrument : MSVOA_U
 ClientSampled :

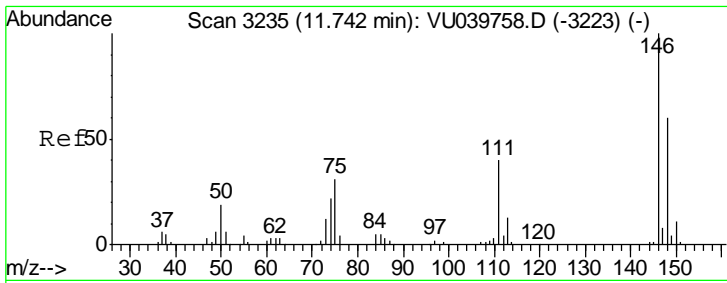
Tgt Ion: 75 Resp: 20533
 Ion Ratio Lower Upper
 75 100
 77 31.7 24.6 37.0



#61
 Bromoform
 Concen: 5.253 ug/L
 RT: 10.29 min Scan# 2783
 Delta R.T. -0.00 min
 Lab File: VU039775.D
 Acq: 07 Aug 2020 10:13

Tgt Ion: 173 Resp: 14274
 Ion Ratio Lower Upper
 173 100
 175 48.2 33.8 50.8
 254 7.4 5.5 8.3

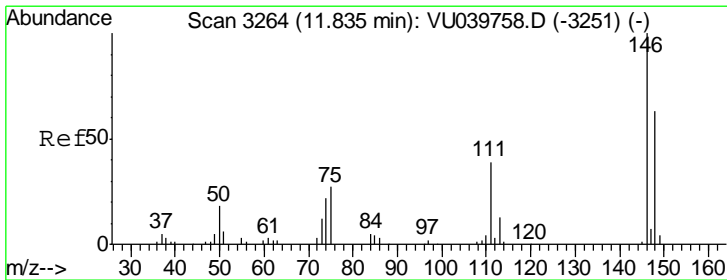
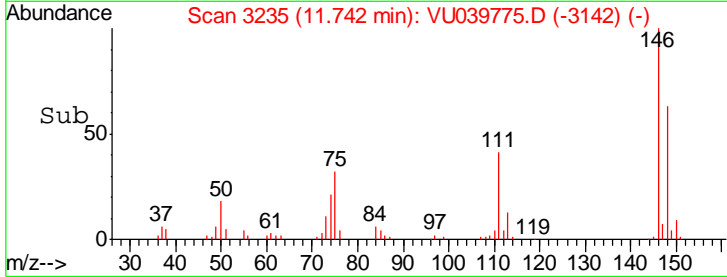
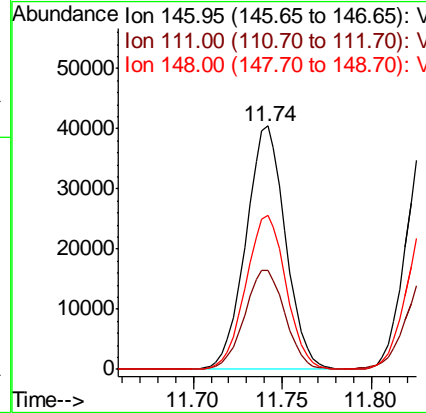
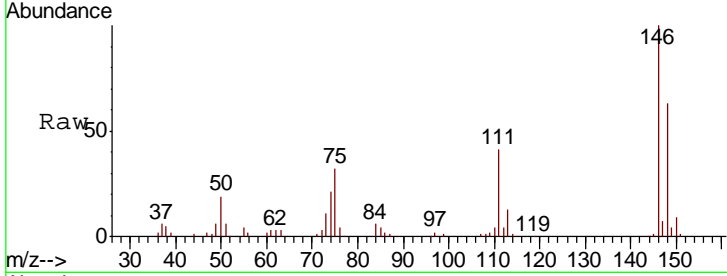




#62
 1,3-Dichlorobenzene
 Concen: 5.314 ug/L
 RT: 11.74 min Scan# 3235
 Delta R.T. 0.00 min
 Lab File: VU039775.D
 Acq: 07 Aug 2020 10:13

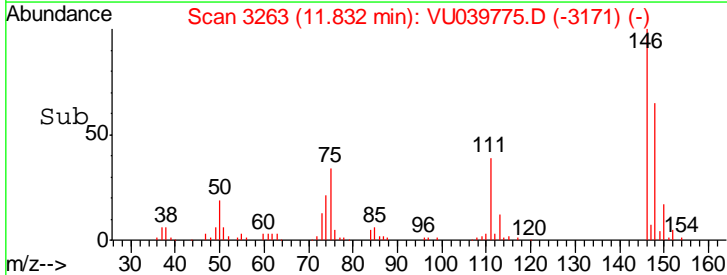
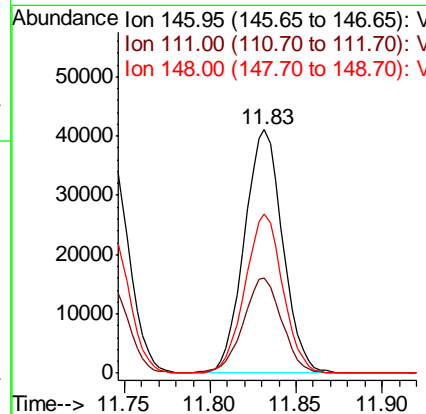
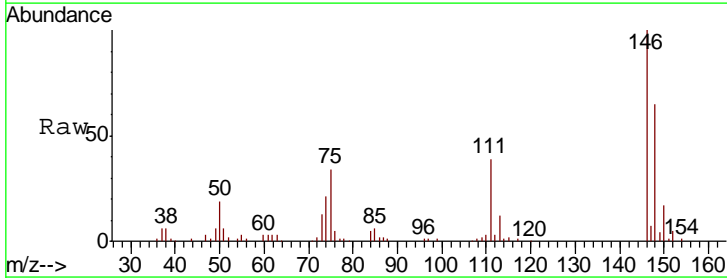
Instrument :
 MSVOA_U
 ClientSampled :

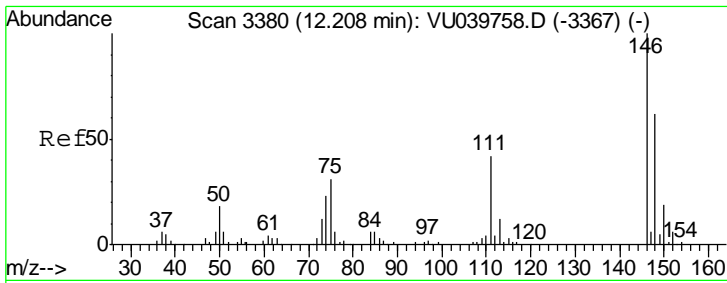
Tgt Ion	Resp	Lower	Upper
146	100		
111	40.5	27.7	51.5
148	63.4	45.2	84.0



#63
 1,4-Dichlorobenzene
 Concen: 5.112 ug/L
 RT: 11.83 min Scan# 3263
 Delta R.T. -0.00 min
 Lab File: VU039775.D
 Acq: 07 Aug 2020 10:13

Tgt Ion	Resp	Lower	Upper
146	100		
111	38.8	26.5	49.3
148	65.3	45.3	84.1

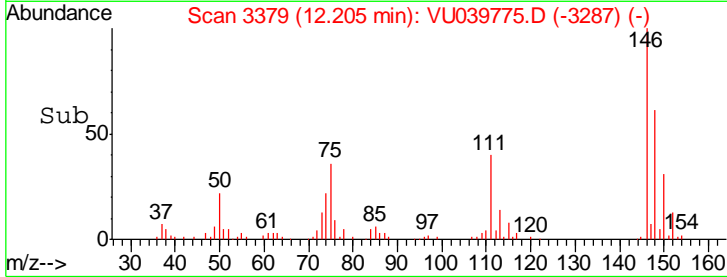
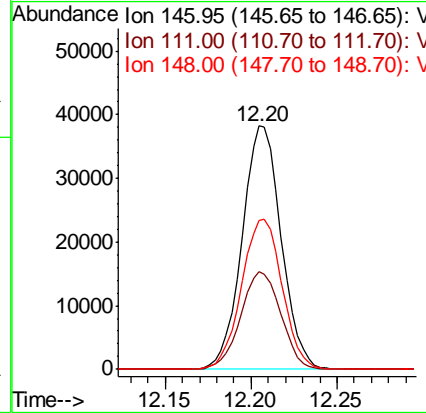
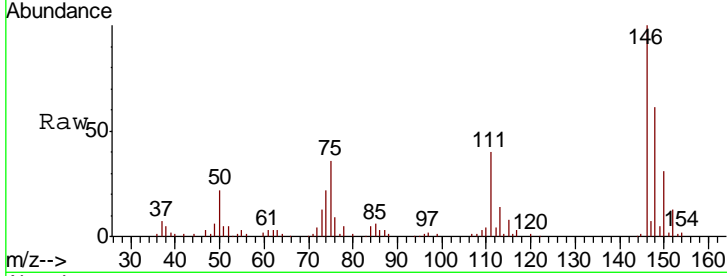




#65
 1,2-Dichlorobenzene
 Concen: 5.197 ug/L
 RT: 12.20 min Scan# 3379
 Delta R.T. -0.00 min
 Lab File: VU039775.D
 Acq: 07 Aug 2020 10:13

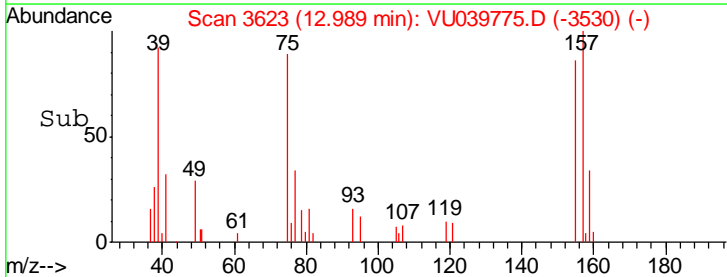
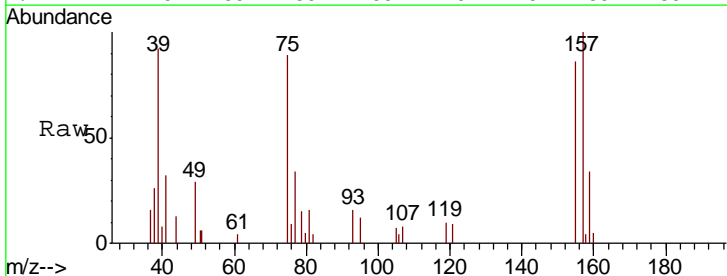
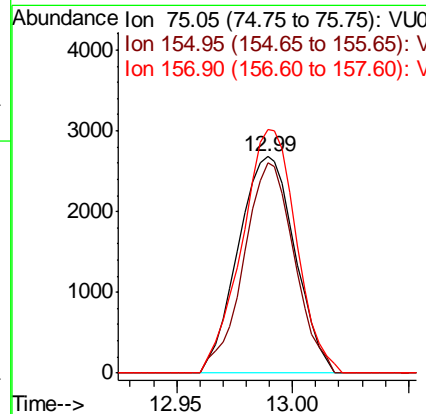
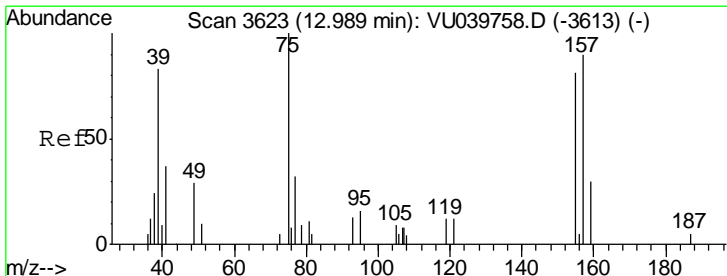
Instrument :
 MSVOA_U
 ClientSampled :

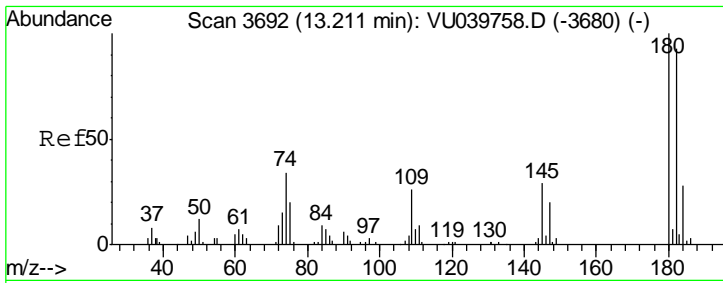
Tgt Ion	Resp	Lower	Upper
146	60268		
111	40.0	33.1	49.7
148	61.3	51.5	77.3



#66
 1,2-Dibromo-3-chloropropane
 Concen: 5.199 ug/L
 RT: 12.99 min Scan# 3623
 Delta R.T. 0.00 min
 Lab File: VU039775.D
 Acq: 07 Aug 2020 10:13

Tgt Ion	Resp	Lower	Upper
75	4558		
155	97.0	64.0	96.0#
157	112.6	77.0	115.6

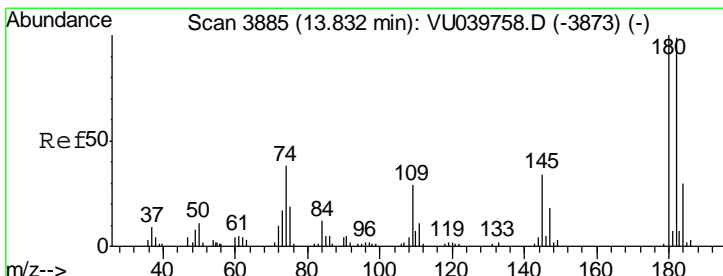
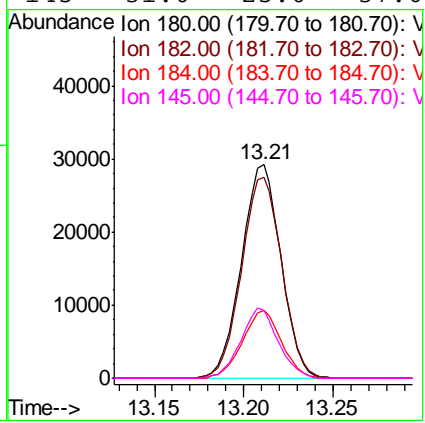
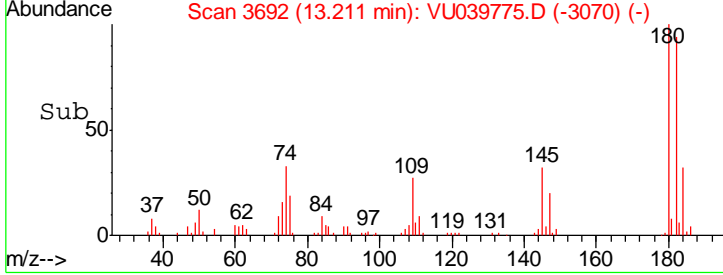
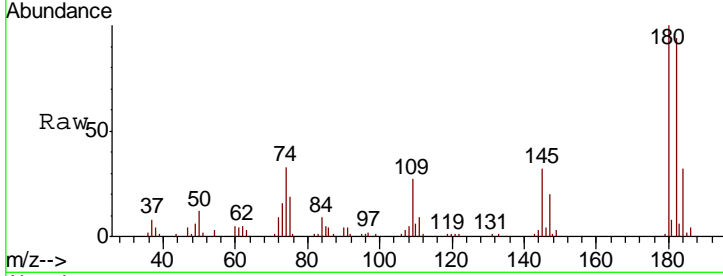




#67
 1,3,5-Trichlorobenzene
 Concen: 5.072 ug/L
 RT: 13.21 min Scan# 3692
 Delta R.T. 0.00 min
 Lab File: VU039775.D
 Acq: 07 Aug 2020 10:13

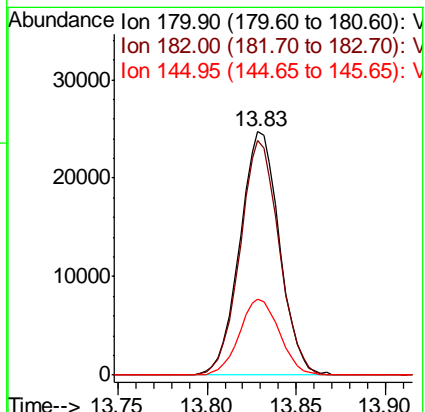
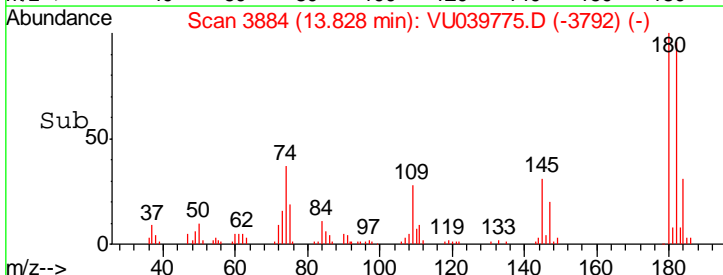
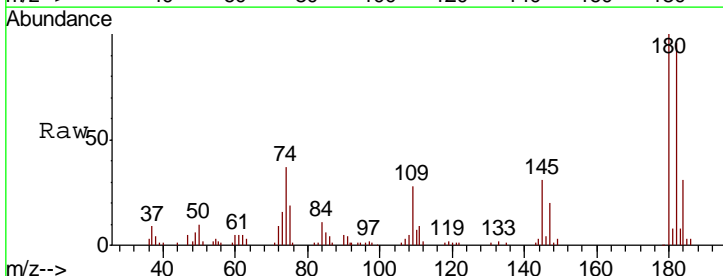
Instrument : MSVOA_U
 ClientSampled :

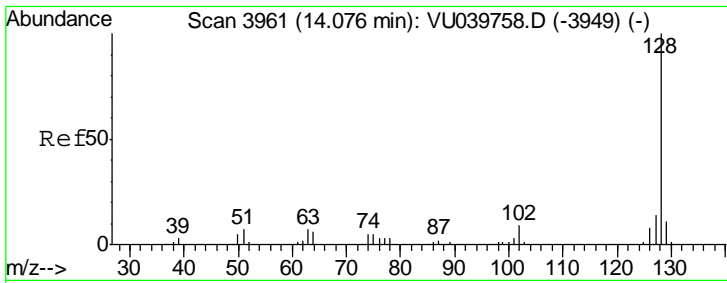
Tgt Ion	Resp	Lower	Upper
180	45247		
182	96.0	74.9	112.3
184	31.2	25.3	37.9
145	31.0	25.0	37.6



#68
 1,2,4-trichlorobenzene
 Concen: 5.103 ug/L
 RT: 13.83 min Scan# 3884
 Delta R.T. -0.00 min
 Lab File: VU039775.D
 Acq: 07 Aug 2020 10:13

Tgt Ion	Resp	Lower	Upper
180	38147		
182	95.3	75.7	113.5
145	31.4	25.1	37.7

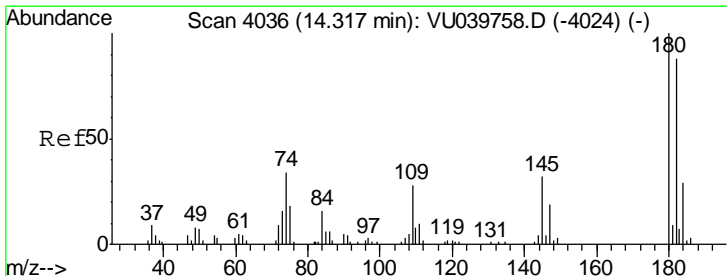
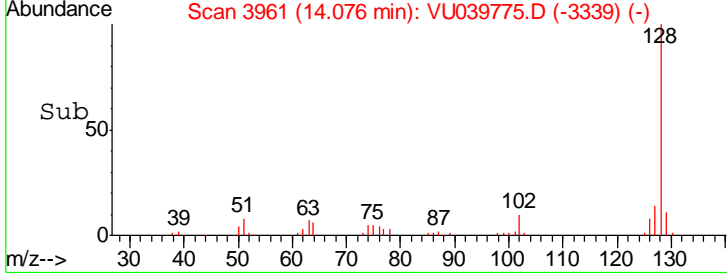
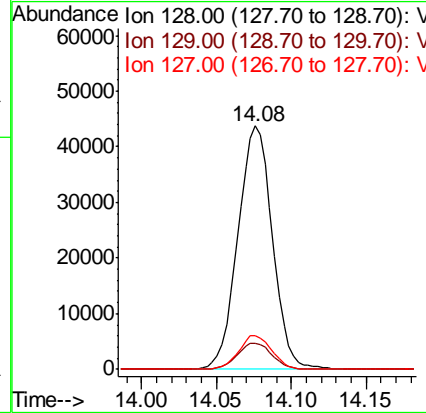
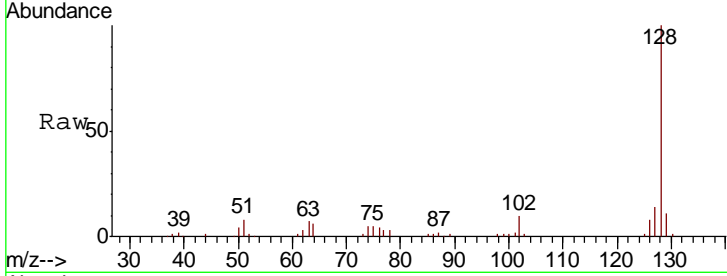




#69
 Naphthalene
 Concen: 5.256 ug/L
 RT: 14.08 min Scan# 3961
 Delta R.T. 0.00 min
 Lab File: VU039775.D
 Acq: 07 Aug 2020 10:13

Instrument : MSVOA_U
 Client Sampled :

Tgt Ion	Resp	Lower	Upper
128	70251		
129	11.0	8.9	13.3
127	13.4	10.1	15.1



#70
 1,2,3-Trichlorobenzene
 Concen: 5.487 ug/L
 RT: 14.32 min Scan# 4036
 Delta R.T. 0.00 min
 Lab File: VU039775.D
 Acq: 07 Aug 2020 10:13

Tgt Ion	Resp	Lower	Upper
180	36801		
182	94.6	76.1	114.1
145	33.3	27.4	41.0

