

Data Path : Z:\voasrv\HPCHEM1\MSVOA_U\Data\VU080822\
 Data File : VU050168.D
 Acq On : 09 Aug 2022 05:36
 Operator : SY/MD
 Sample : N4075-12
 Misc : 25.0mL/MSVOA_U/WATER
 ALS Vial : 41 Sample Multiplier: 1

Instrument :
 MSVOA_U
 ClientSampleId :
 DBUX9

Quant Time: Aug 09 07:01:17 2022
 Quant Method : Z:\voasrv\HPCHEM1\MSVOA_U\Method\SFAMUTR080422WMA.M
 Quant Title : TRACE VOA SFAM1.0
 QLast Update : Tue Aug 09 03:59:45 2022
 Response via : Initial Calibration

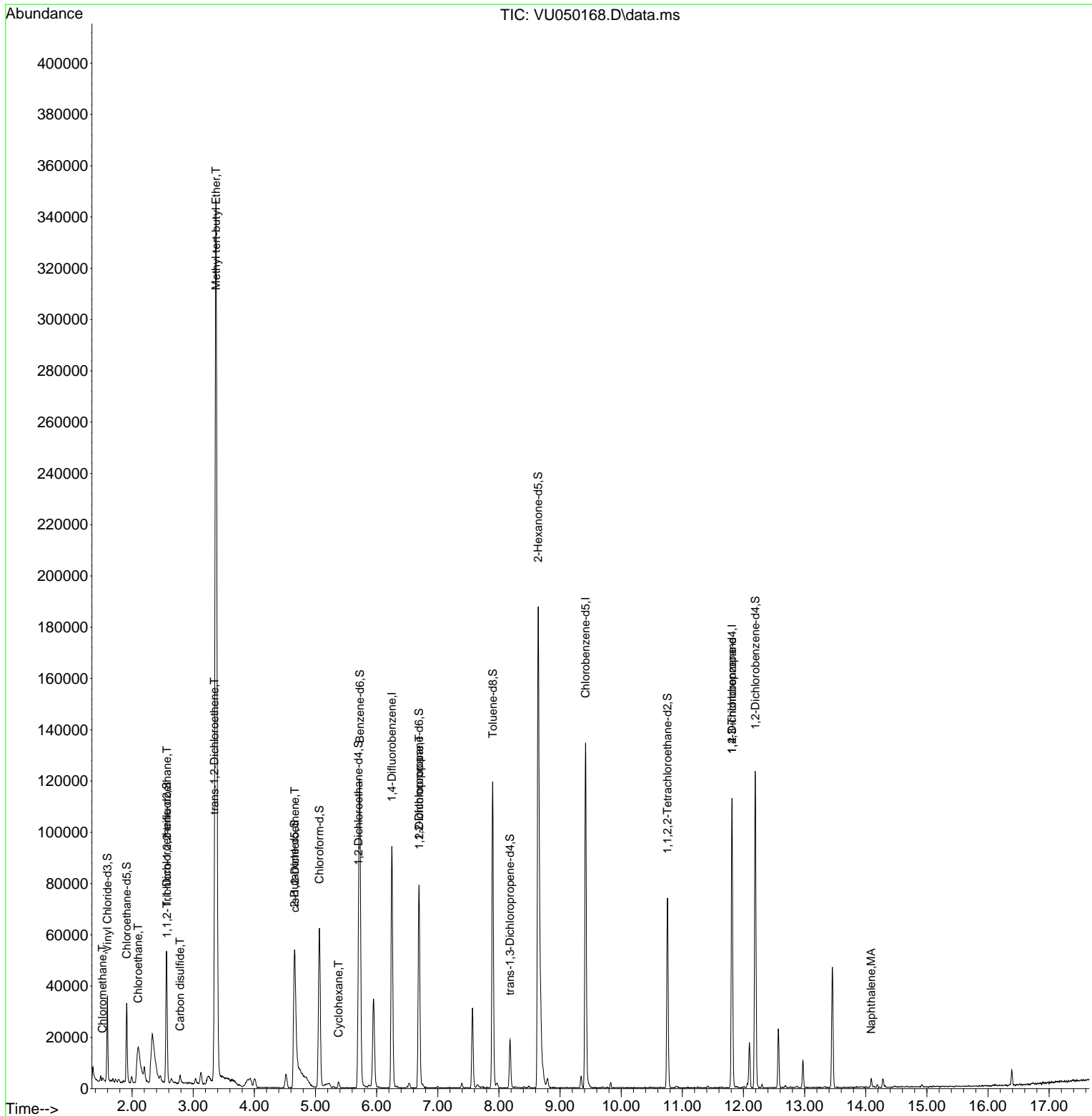
| Compound | R.T. | QIon | Response | Conc | Units | Dev(Min) |
|-------------------------------|--------|----------------|----------|--------|-----------|----------|
| Internal Standards | | | | | | |
| 1) 1,4-Difluorobenzene | 6.250 | 114 | 77211 | 5.000 | ug/L | 0.00 |
| 28) Chlorobenzene-d5 | 9.417 | 117 | 77776 | 5.000 | ug/L | 0.00 |
| 58) 1,4-Dichlorobenzene-d4 | 11.812 | 152 | 31079 | 5.000 | ug/L | 0.00 |
| System Monitoring Compounds | | | | | | |
| 4) Vinyl Chloride-d3 | 1.597 | 65 | 22584 | 3.515 | ug/L | 0.00 |
| Spiked Amount | 5.000 | Range 40 - 130 | Recovery | = | 70.200% | |
| 7) Chloroethane-d5 | 1.912 | 69 | 21941 | 4.232 | ug/L | 0.00 |
| Spiked Amount | 5.000 | Range 65 - 130 | Recovery | = | 84.600% | |
| 11) 1,1-Dichloroethene-d2 | 2.565 | 65 | 9619 | 3.830 | ug/L | 0.00 |
| Spiked Amount | 5.000 | Range 60 - 125 | Recovery | = | 76.600% | |
| 20) 2-Butanone-d5 | 4.655 | 46 | 78274 | 49.954 | ug/L | 0.03 |
| Spiked Amount | 50.000 | Range 40 - 130 | Recovery | = | 99.900% | |
| 24) Chloroform-d | 5.063 | 84 | 59621 | 4.988 | ug/L | 0.00 |
| Spiked Amount | 5.000 | Range 70 - 125 | Recovery | = | 99.800% | |
| 26) 1,2-Dichloroethane-d4 | 5.703 | 65 | 31628 | 5.154 | ug/L | 0.00 |
| Spiked Amount | 5.000 | Range 70 - 130 | Recovery | = | 103.000% | |
| 32) Benzene-d6 | 5.726 | 84 | 108270 | 4.461 | ug/L | 0.00 |
| Spiked Amount | 5.000 | Range 70 - 125 | Recovery | = | 89.200% | |
| 36) 1,2-Dichloropropane-d6 | 6.694 | 67 | 40147 | 5.023 | ug/L | 0.00 |
| Spiked Amount | 5.000 | Range 60 - 140 | Recovery | = | 100.400% | |
| 41) Toluene-d8 | 7.899 | 98 | 81849 | 3.818 | ug/L | 0.00 |
| Spiked Amount | 5.000 | Range 70 - 130 | Recovery | = | 76.400% | |
| 43) trans-1,3-Dichloroprop... | 8.182 | 79 | 11616 | 4.056 | ug/L | 0.00 |
| Spiked Amount | 5.000 | Range 55 - 130 | Recovery | = | 81.200% | |
| 46) 2-Hexanone-d5 | 8.642 | 63 | 68025 | 66.976 | ug/L | 0.00 |
| Spiked Amount | 50.000 | Range 45 - 130 | Recovery | = | 133.960%# | |
| 56) 1,1,2,2-Tetrachloroeth... | 10.758 | 84 | 38721 | 5.517 | ug/L | 0.00 |
| Spiked Amount | 5.000 | Range 65 - 120 | Recovery | = | 110.400% | |
| 66) 1,2-Dichlorobenzene-d4 | 12.195 | 152 | 32871 | 5.398 | ug/L | 0.00 |
| Spiked Amount | 5.000 | Range 80 - 120 | Recovery | = | 108.000% | |
| Target Compounds | | | | | | |
| 3) Chloromethane | 1.517 | 50 | 1400 | 0.151 | ug/L # | 81 |
| 8) Chloroethane | 2.099 | 64 | 41300 | 8.450 | ug/L # | 51 |
| 10) 1,1,2-Trichloro-1,2,2-... | 2.572 | 101 | 222 | 0.044 | ug/L # | 22 |
| 14) Carbon disulfide | 2.787 | 76 | 3580 | 0.188 | ug/L # | 92 |
| 17) Methyl tert-butyl Ether | 3.372 | 73 | 396620 | 28.474 | ug/L | 99 |
| 18) trans-1,2-Dichloroethene | 3.346 | 96 | 1487 | 0.249 | ug/L | 82 |
| 22) cis-1,2-Dichloroethene | 4.665 | 96 | 7345 | 1.107 | ug/L | 95 |
| 30) Cyclohexane | 5.375 | 56 | 1024 | 0.123 | ug/L # | 94 |
| 37) 1,2-Dichloropropane | 6.697 | 63 | 4018 | 0.554 | ug/L # | 89 |
| 61) 1,2,3-Trichloropropane | 11.812 | 75 | 3689 | 0.871 | ug/L # | 67 |
| 71) Naphthalene | 14.089 | 128 | 3311 | 0.286 | ug/L # | 95 |

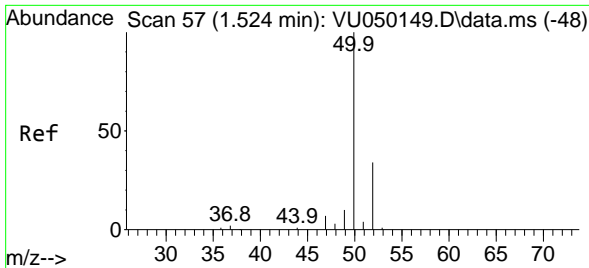
(#) = qualifier out of range (m) = manual integration (+) = signals summed

Data Path : Z:\voasrv\HPCHEM1\MSVOA_U\Data\VU080822\
 Data File : VU050168.D
 Acq On : 09 Aug 2022 05:36
 Operator : SY/MD
 Sample : N4075-12
 Misc : 25.0mL/MSVOA_U/WATER
 ALS Vial : 41 Sample Multiplier: 1

Instrument :
 MSVOA_U
 ClientSampleId :
 DBUX9

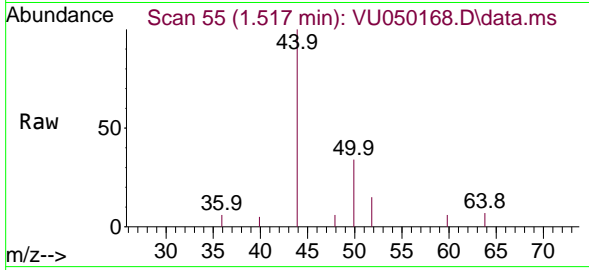
Quant Time: Aug 09 07:01:17 2022
 Quant Method : Z:\voasrv\HPCHEM1\MSVOA_U\Method\SFAMUTR080422WMA.M
 Quant Title : TRACE VOA SFAM1.0
 QLast Update : Tue Aug 09 03:59:45 2022
 Response via : Initial Calibration



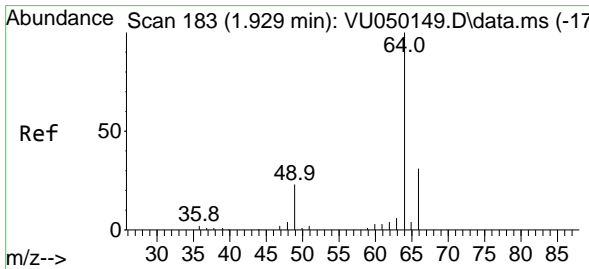
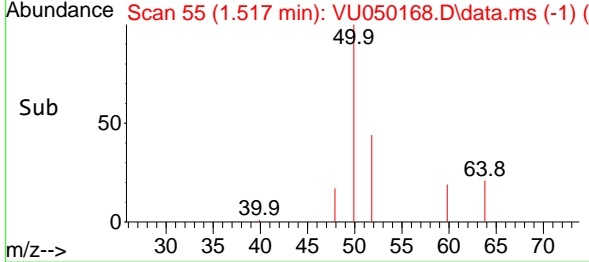
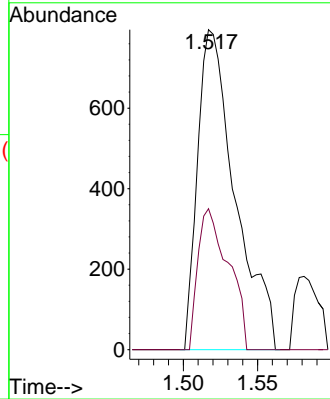


#3
 Chloromethane
 Concen: 0.151 ug/L
 RT: 1.517 min Scan# 51
 Delta R.T. -0.007 min
 Lab File: VU050168.D
 Acq: 09 Aug 2022 05:36

Instrument :
 MSVOA_U
 ClientSampleId :
 DBUX9

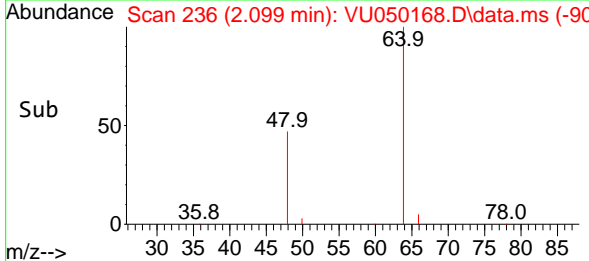
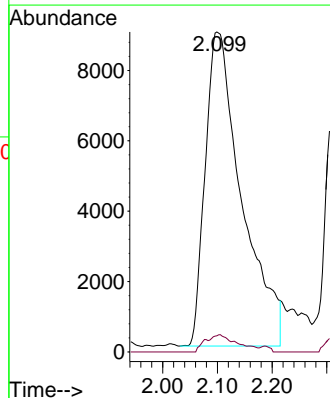
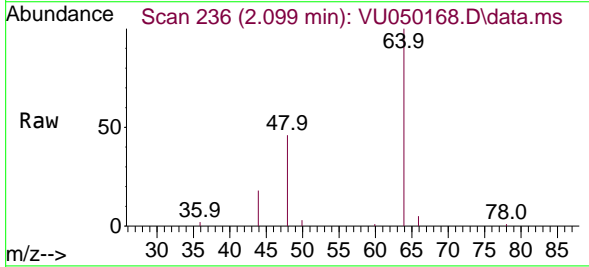


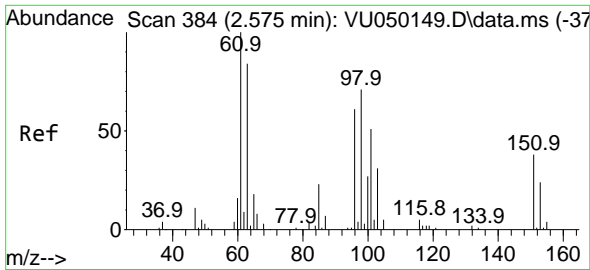
Tgt Ion: 50 Resp: 1400
 Ion Ratio Lower Upper
 50 100
 52 44.0 23.2 43.2#



#8
 Chloroethane
 Concen: 8.450 ug/L
 RT: 2.099 min Scan# 236
 Delta R.T. 0.170 min
 Lab File: VU050168.D
 Acq: 09 Aug 2022 05:36

Tgt Ion: 64 Resp: 41300
 Ion Ratio Lower Upper
 64 100
 66 5.0 22.8 42.4#

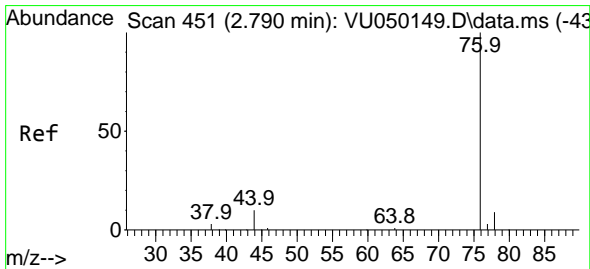
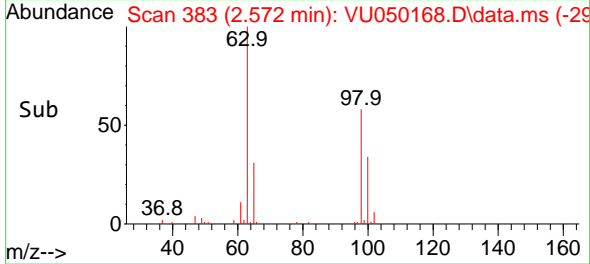
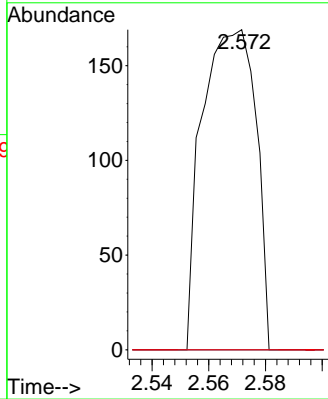
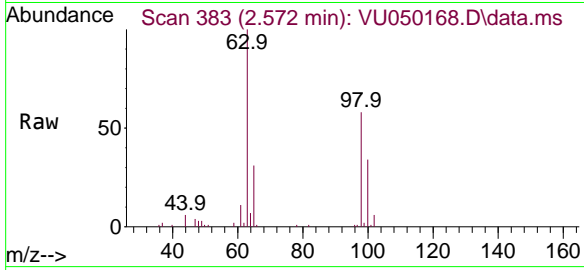




#10
 1,1,2-Trichloro-1,2,2-trifluoroethane
 Concen: 0.044 ug/L
 RT: 2.572 min Scan# 384
 Delta R.T. -0.003 min
 Lab File: VU050168.D
 Acq: 09 Aug 2022 05:36

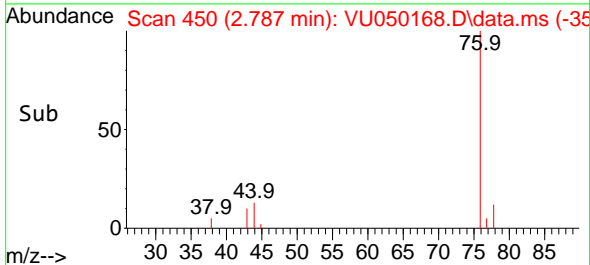
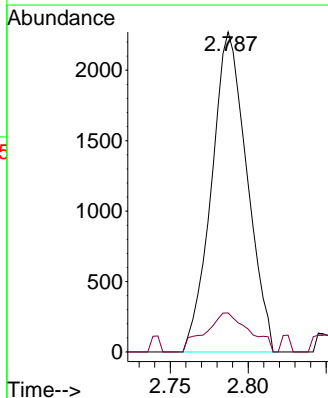
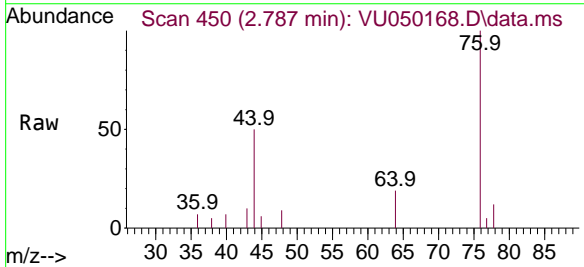
Instrument : MSVOA_U
 ClientSampleId : DBUX9

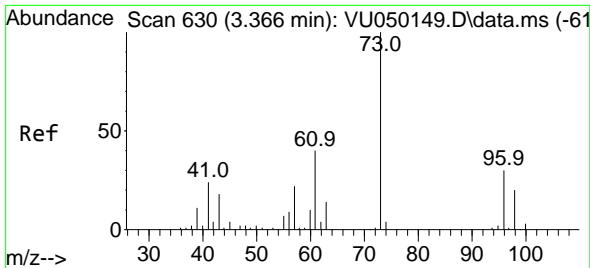
| Tgt Ion | Resp | Lower | Upper |
|---------|------|-------|-------|
| 101 | 100 | | |
| 85 | 0.0 | 35.6 | 53.4# |
| 151 | 0.0 | 55.2 | 82.8# |



#14
 Carbon disulfide
 Concen: 0.188 ug/L
 RT: 2.787 min Scan# 450
 Delta R.T. -0.003 min
 Lab File: VU050168.D
 Acq: 09 Aug 2022 05:36

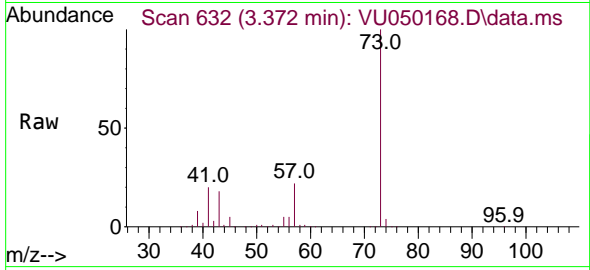
| Tgt Ion | Resp | Lower | Upper |
|---------|------|-------|-------|
| 76 | 100 | | |
| 78 | 12.2 | 7.4 | 11.0# |



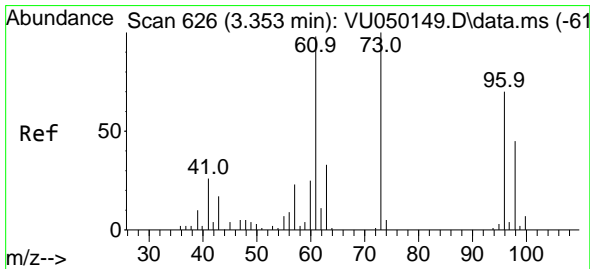
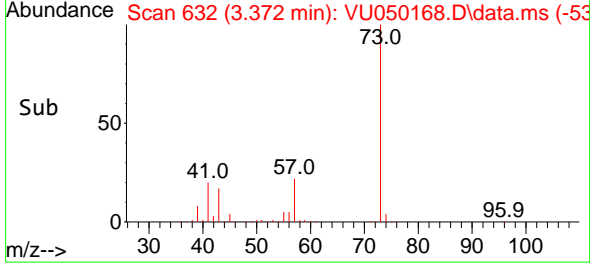
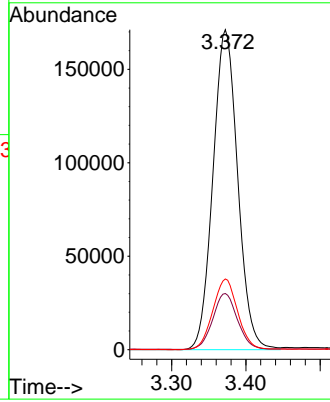


#17
 Methyl tert-butyl Ether
 Concen: 28.474 ug/L
 RT: 3.372 min Scan# 611
 Delta R.T. 0.006 min
 Lab File: VU050168.D
 Acq: 09 Aug 2022 05:36

Instrument : MSVOA_U
 ClientSampleId : DBUX9

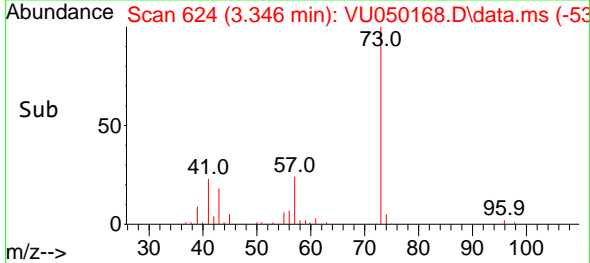
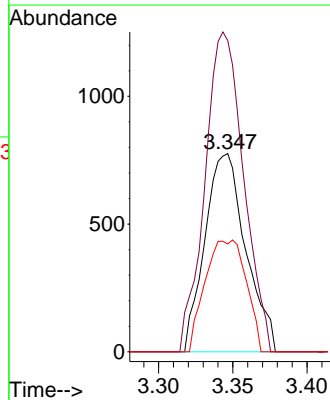
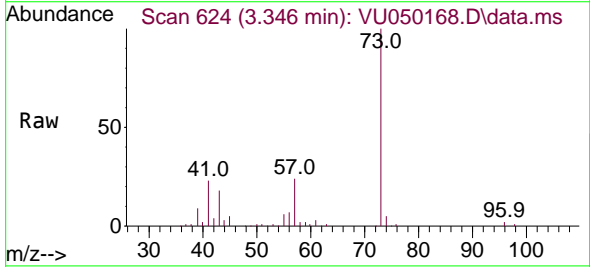


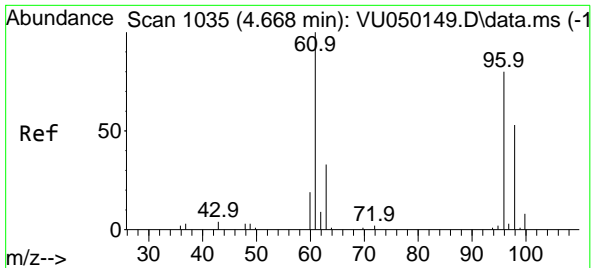
Tgt Ion: 73 Resp: 396620
 Ion Ratio Lower Upper
 73 100
 43 17.4 13.5 20.3
 57 22.3 17.4 26.2



#18
 trans-1,2-Dichloroethene
 Concen: 0.249 ug/L
 RT: 3.346 min Scan# 624
 Delta R.T. -0.007 min
 Lab File: VU050168.D
 Acq: 09 Aug 2022 05:36

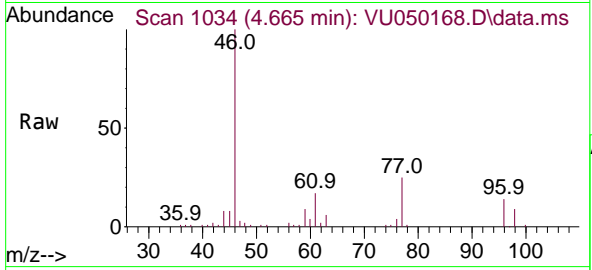
Tgt Ion: 96 Resp: 1487
 Ion Ratio Lower Upper
 96 100
 61 157.1 92.3 171.5
 98 54.4 43.2 80.2





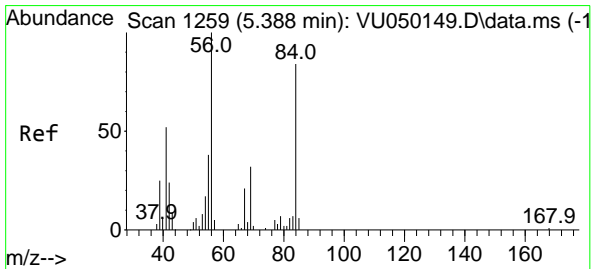
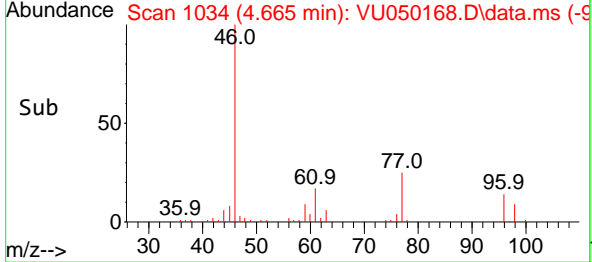
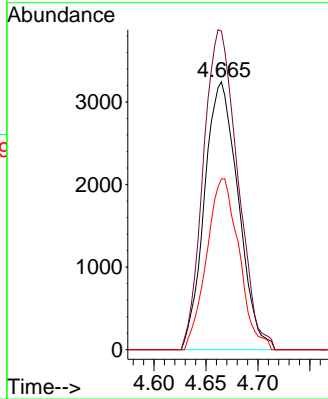
#22
 cis-1,2-Dichloroethene
 Concen: 1.107 ug/L
 RT: 4.665 min Scan# 1034
 Delta R.T. -0.003 min
 Lab File: VU050168.D
 Acq: 09 Aug 2022 05:36

Instrument : MSVOA_U
 ClientSampleId : DBUX9



Tgt Ion: 96 Resp: 7345

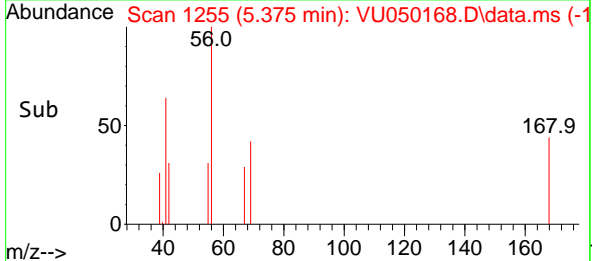
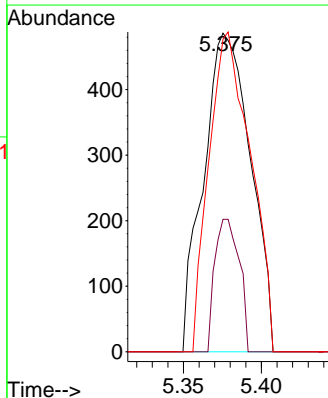
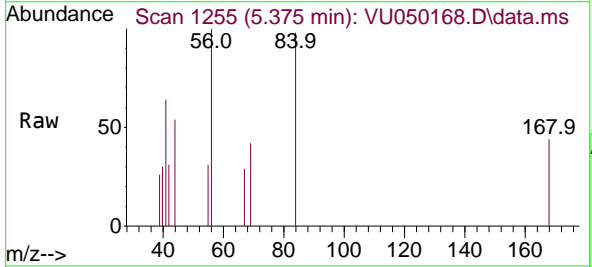
| Ion | Ratio | Lower | Upper |
|-----|-------|-------|-------|
| 96 | 100 | | |
| 61 | 118.9 | 89.0 | 165.4 |
| 98 | 63.7 | 45.2 | 84.0 |

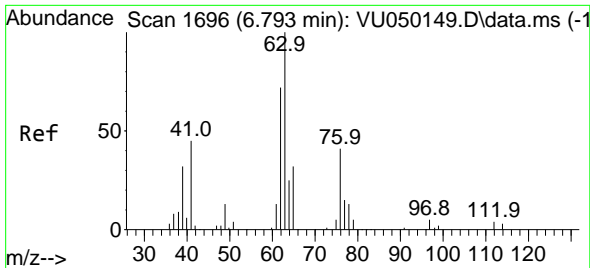


#30
 Cyclohexane
 Concen: 0.123 ug/L
 RT: 5.375 min Scan# 1255
 Delta R.T. -0.013 min
 Lab File: VU050168.D
 Acq: 09 Aug 2022 05:36

Tgt Ion: 56 Resp: 1024

| Ion | Ratio | Lower | Upper |
|-----|-------|-------|-------|
| 56 | 100 | | |
| 69 | 21.4 | 24.6 | 37.0# |
| 84 | 88.4 | 69.1 | 103.7 |

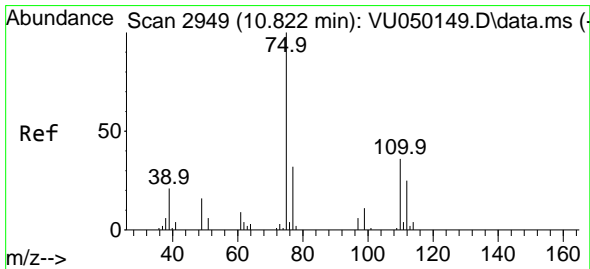
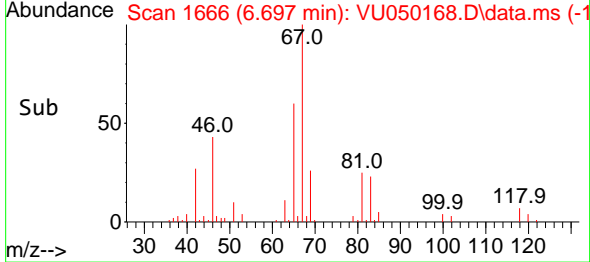
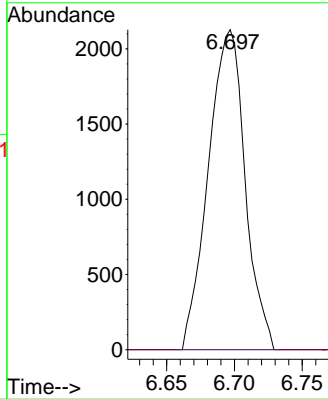
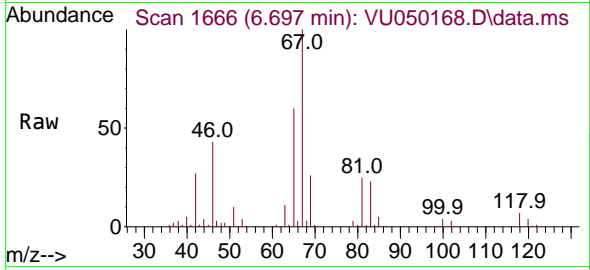




#37
 1,2-Dichloropropane
 Concen: 0.554 ug/L
 RT: 6.697 min Scan# 1
 Delta R.T. -0.097 min
 Lab File: VU050168.D
 Acq: 09 Aug 2022 05:36

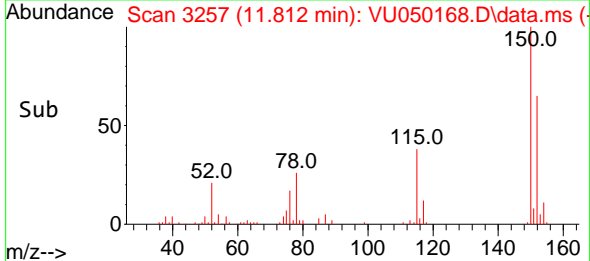
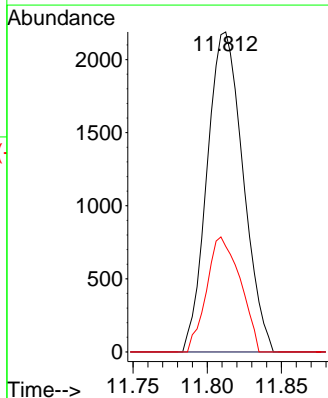
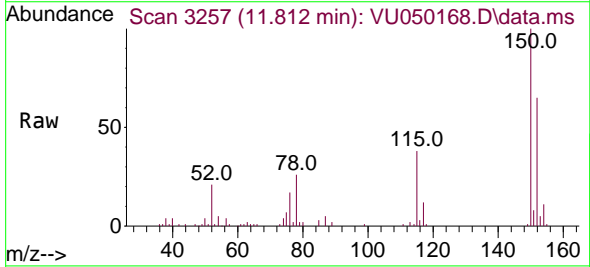
Instrument : MSVOA_U
 ClientSampleId : DBUX9

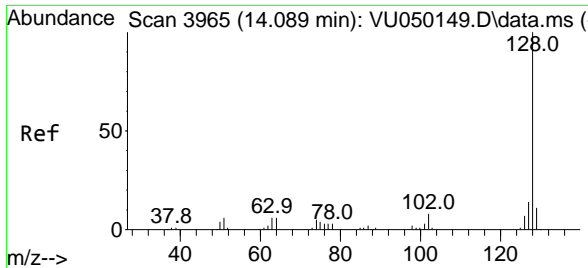
Tgt Ion: 63 Resp: 4018
 Ion Ratio Lower Upper
 63 100
 112 0.0 3.0 4.4#



#61
 1,2,3-Trichloropropane
 Concen: 0.871 ug/L
 RT: 11.812 min Scan# 3257
 Delta R.T. 0.990 min
 Lab File: VU050168.D
 Acq: 09 Aug 2022 05:36

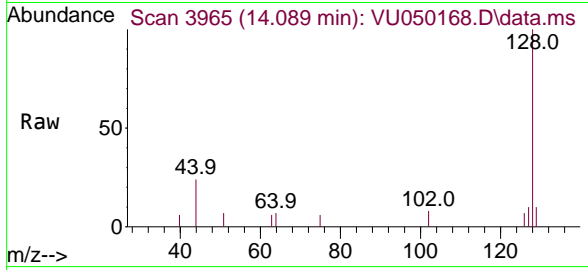
Tgt Ion: 75 Resp: 3689
 Ion Ratio Lower Upper
 75 100
 110 0.0 28.5 42.7#
 77 33.5 25.8 38.6





#71
 Naphthalene
 Concen: 0.286 ug/L
 RT: 14.089 min Scan# 3965
 Delta R.T. -0.000 min
 Lab File: VU050168.D
 Acq: 09 Aug 2022 05:36

Instrument : MSVOA_U
 ClientSampleId : DBUX9



Tgt Ion:128 Resp: 3311

| Ion | Ratio | Lower | Upper |
|-----|-------|-------|-------|
| 128 | 100 | | |
| 129 | 8.4 | 8.6 | 12.8# |
| 127 | 11.4 | 10.6 | 16.0 |

