

Data Path : Z:\voasrv\HPCHEM1\MSVOA\_U\Data\VU080822\  
 Data File : VU050196.D  
 Acq On : 09 Aug 2022 22:20  
 Operator : SY/MD  
 Sample : N4076-02  
 Misc : 25.0mL/MSVOA\_U/WATER  
 ALS Vial : 28 Sample Multiplier: 1

Instrument :  
 MSVOA\_U  
 ClientSampleId :  
 DBUT6

Quant Time: Aug 10 06:34:11 2022  
 Quant Method : Z:\voasrv\HPCHEM1\MSVOA\_U\Method\SFAMUTR080422WMA.M  
 Quant Title : TRACE VOA SFAM1.0  
 QLast Update : Wed Aug 10 05:49:54 2022  
 Response via : Initial Calibration

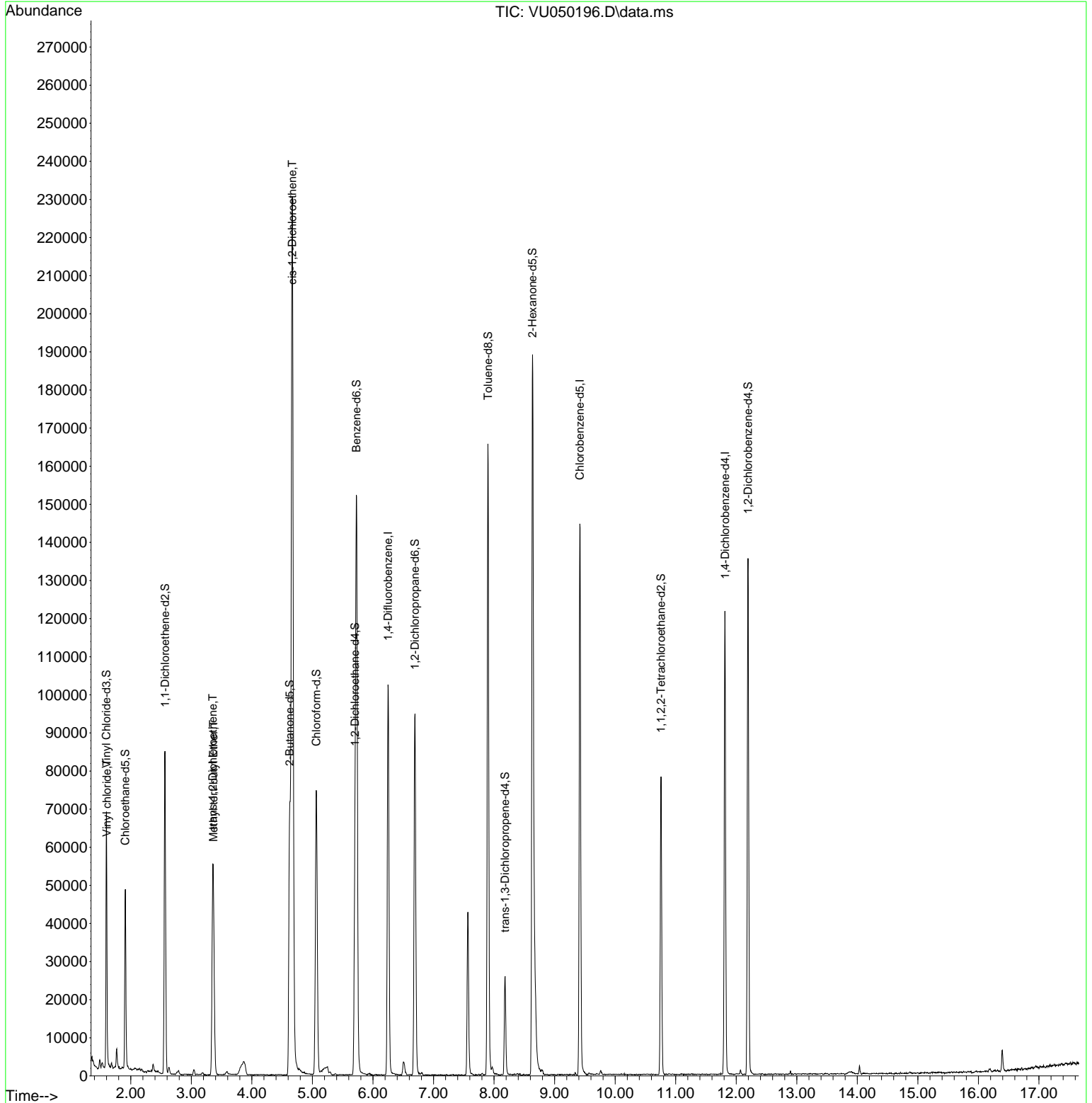
Compound	R.T.	QIon	Response	Conc	Units	Dev(Min)
Internal Standards						
1) 1,4-Difluorobenzene	6.250	114	84770	5.000	ug/L	0.00
28) Chlorobenzene-d5	9.417	117	84866	5.000	ug/L	0.00
58) 1,4-Dichlorobenzene-d4	11.816	152	32656	5.000	ug/L	0.00
System Monitoring Compounds						
4) Vinyl Chloride-d3	1.597	65	44802	6.351	ug/L	0.00
Spiked Amount	5.000	Range 40 - 130	Recovery	=	127.000%	
7) Chloroethane-d5	1.909	69	35157	6.177	ug/L	0.00
Spiked Amount	5.000	Range 65 - 130	Recovery	=	123.600%	
11) 1,1-Dichloroethene-d2	2.565	65	16123	5.848	ug/L	0.00
Spiked Amount	5.000	Range 60 - 125	Recovery	=	117.000%	
20) 2-Butanone-d5	4.623	46	100301	58.303	ug/L	0.00
Spiked Amount	50.000	Range 40 - 130	Recovery	=	116.600%	
24) Chloroform-d	5.063	84	72217	5.504	ug/L	0.00
Spiked Amount	5.000	Range 70 - 125	Recovery	=	110.000%	
26) 1,2-Dichloroethane-d4	5.703	65	37886	5.623	ug/L	0.00
Spiked Amount	5.000	Range 70 - 130	Recovery	=	112.400%	
32) Benzene-d6	5.729	84	146071	5.516	ug/L	0.00
Spiked Amount	5.000	Range 70 - 125	Recovery	=	110.400%	
36) 1,2-Dichloropropane-d6	6.694	67	48173	5.524	ug/L	0.00
Spiked Amount	5.000	Range 60 - 140	Recovery	=	110.400%	
41) Toluene-d8	7.899	98	115090	4.920	ug/L	0.00
Spiked Amount	5.000	Range 70 - 130	Recovery	=	98.400%	
43) trans-1,3-Dichloroprop...	8.182	79	15730	5.033	ug/L	0.00
Spiked Amount	5.000	Range 55 - 130	Recovery	=	100.600%	
46) 2-Hexanone-d5	8.632	63	60868	54.923	ug/L	0.00
Spiked Amount	50.000	Range 45 - 130	Recovery	=	109.840%	
56) 1,1,2,2-Tetrachloroeth...	10.758	84	40804	5.328	ug/L	0.00
Spiked Amount	5.000	Range 65 - 120	Recovery	=	106.600%	
66) 1,2-Dichlorobenzene-d4	12.195	152	36679	5.733	ug/L	0.00
Spiked Amount	5.000	Range 80 - 120	Recovery	=	114.600%	
Target Compounds						
5) Vinyl chloride	1.604	62	3575	0.393	ug/L	85
17) Methyl tert-butyl Ether	3.366	73	30979	2.026	ug/L	98
18) trans-1,2-Dichloroethene	3.353	96	14184	2.162	ug/L	95
22) cis-1,2-Dichloroethene	4.668	96	120370	16.530	ug/L	99

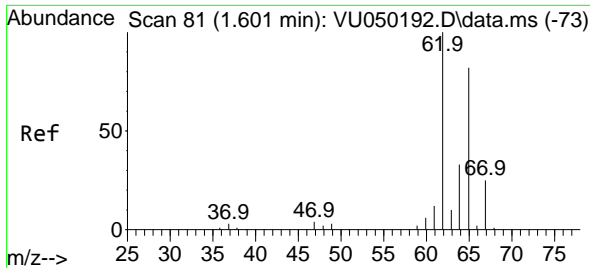
(#) = qualifier out of range (m) = manual integration (+) = signals summed

Data Path : Z:\voasrv\HPCHEM1\MSVOA\_U\Data\VU080822\  
 Data File : VU050196.D  
 Acq On : 09 Aug 2022 22:20  
 Operator : SY/MD  
 Sample : N4076-02  
 Misc : 25.0mL/MSVOA\_U/WATER  
 ALS Vial : 28 Sample Multiplier: 1

Instrument :  
 MSVOA\_U  
 ClientSampleId :  
 DBUT6

Quant Time: Aug 10 06:34:11 2022  
 Quant Method : Z:\voasrv\HPCHEM1\MSVOA\_U\Method\SFAMUTR080422WMA.M  
 Quant Title : TRACE VOA SFAM1.0  
 QLast Update : Wed Aug 10 05:49:54 2022  
 Response via : Initial Calibration

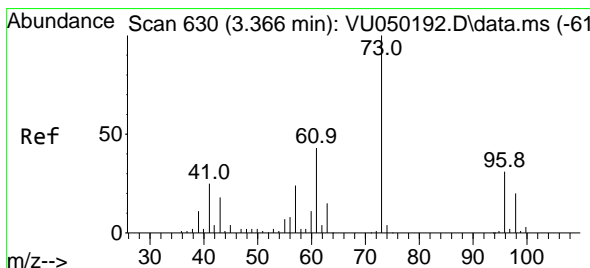
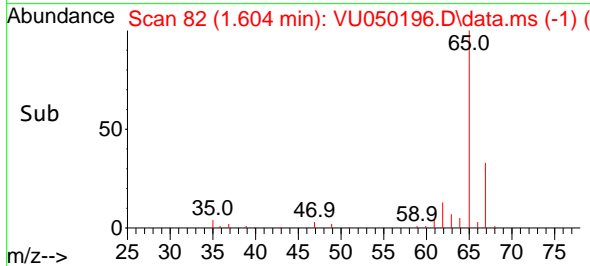
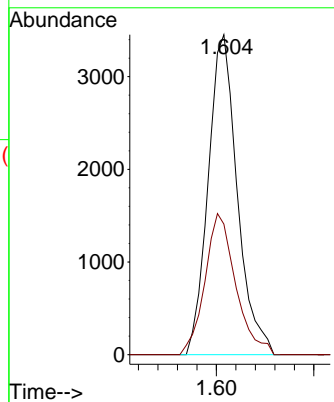
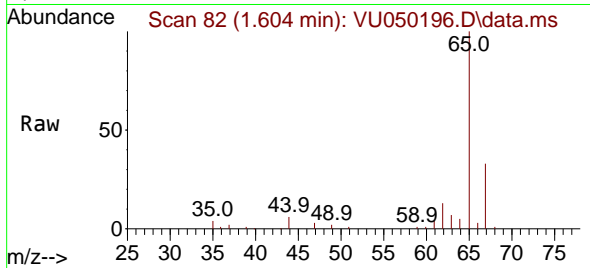




#5  
 Vinyl chloride  
 Concen: 0.393 ug/L  
 RT: 1.604 min Scan# 81  
 Delta R.T. 0.003 min  
 Lab File: VU050196.D  
 Acq: 09 Aug 2022 22:20

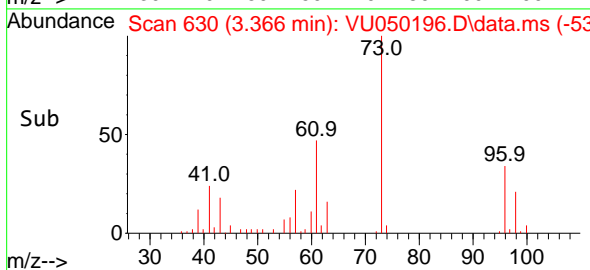
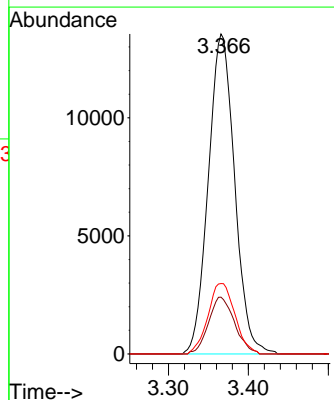
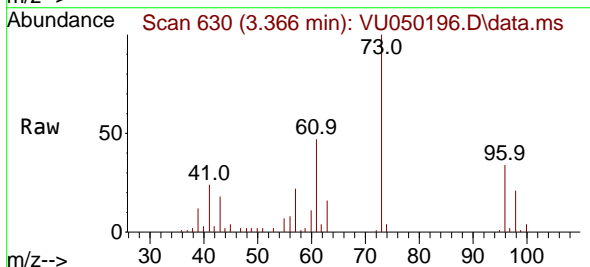
Instrument :  
 MSVOA\_U  
 ClientSampleId :  
 DBUT6

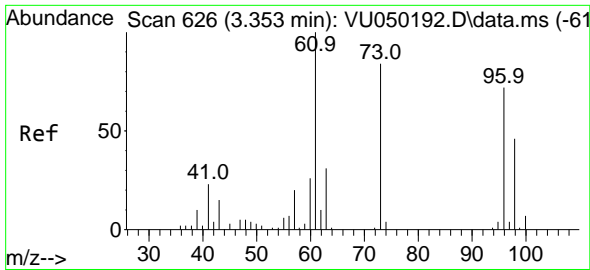
Tgt Ion: 62 Resp: 3575  
 Ion Ratio Lower Upper  
 62 100  
 64 40.8 22.8 42.4



#17  
 Methyl tert-butyl Ether  
 Concen: 2.026 ug/L  
 RT: 3.366 min Scan# 630  
 Delta R.T. 0.000 min  
 Lab File: VU050196.D  
 Acq: 09 Aug 2022 22:20

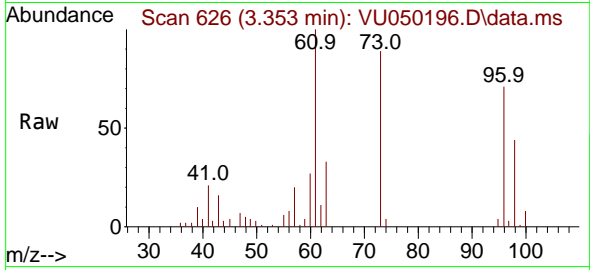
Tgt Ion: 73 Resp: 30979  
 Ion Ratio Lower Upper  
 73 100  
 43 17.5 13.5 20.3  
 57 22.6 17.4 26.2





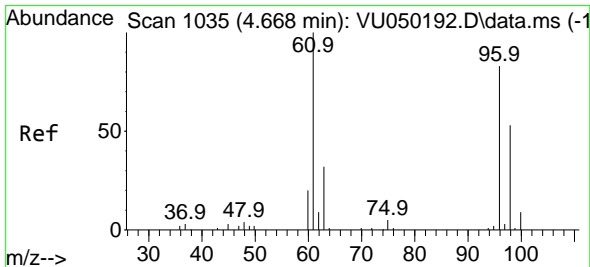
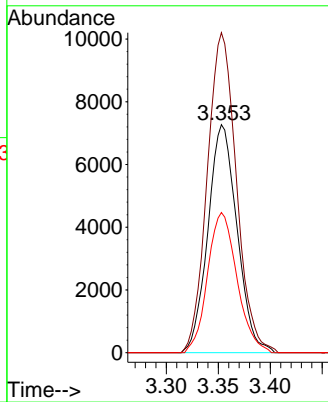
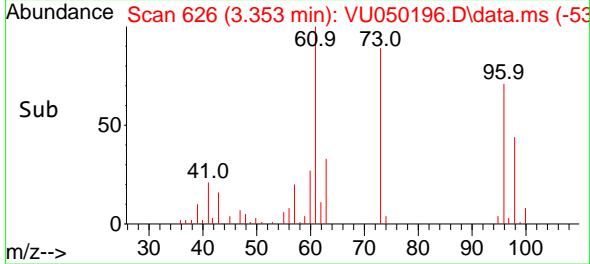
#18  
 trans-1,2-Dichloroethene  
 Concen: 2.162 ug/L  
 RT: 3.353 min Scan# 61  
 Delta R.T. 0.000 min  
 Lab File: VU050196.D  
 Acq: 09 Aug 2022 22:20

Instrument : MSVOA\_U  
 ClientSampleId : DBUT6

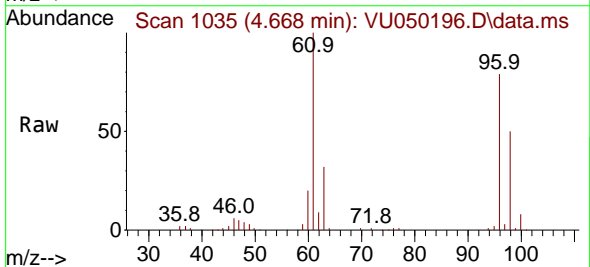


Tgt Ion: 96 Resp: 14184

Ion	Ratio	Lower	Upper
96	100		
61	140.4	92.3	171.5
98	61.5	43.2	80.2



#22  
 cis-1,2-Dichloroethene  
 Concen: 16.530 ug/L  
 RT: 4.668 min Scan# 1035  
 Delta R.T. 0.000 min  
 Lab File: VU050196.D  
 Acq: 09 Aug 2022 22:20



Tgt Ion: 96 Resp: 120370

Ion	Ratio	Lower	Upper
96	100		
61	125.8	89.0	165.4
98	63.1	45.2	84.0

