

Data Path : Z:\VOASRV\HPCHEM1\MSVOA\_U\DATA\VV080918\  
 Data File : VU025980.D  
 Acq On : 08 Aug 2018 20:06  
 Operator : MD/SY  
 Sample : VSTD05044  
 Misc : 5.0mL/MSVOA\_U/WATER  
 ALS Vial : 6 Sample Multiplier: 1

Instrument :  
 MSVOA\_U  
 ClientSampleId :  
 VSTD05044

Quant Time: Aug 09 01:27:41 2018  
 Quant Method : Z:\VOASRV\HPCHEM1\MSVOA\_U\METHOD\SOMULM080918WMA.M  
 Quant Title : VOC Analysis  
 QLast Update : Thu Aug 09 01:26:57 2018  
 Response via : Initial Calibration

Internal Standards	R.T.	QIon	Response	Conc	Units	Dev(Min)
1) 1,4-Difluorobenzene	5.89	114	310491	50.00	ug/L	0.00
28) Chlorobenzene-d5	9.09	117	292836	50.00	ug/L	0.00
60) 1,4-Dichlorobenzene-d4	11.49	152	148160	50.00	ug/L	0.00

## System Monitoring Compounds

4) Vinyl Chloride-d3	1.40	65	112975	62.37	ug/L	0.00
7) Chloroethane-d5	1.67	69	90404	65.62	ug/L	0.00
11) 1,1-Dichloroethene-d2	2.27	63	225934	63.53	ug/L	0.00
21) 2-Butanone-d5	4.18	46	189887	145.49	ug/L	0.00
24) Chloroform-d	4.65	84	244041	67.64	ug/L	0.00
26) 1,2-Dichloroethane-d4	5.31	65	161214	67.64	ug/L	0.00
32) Benzene-d6	5.35	84	465163	66.96	ug/L	0.00
36) 1,2-Dichloropropane-d6	6.33	67	148692	68.29	ug/L	0.00
41) Toluene-d8	7.57	98	446258	66.44	ug/L	0.00
43) trans-1,3-Dichloropropene-	7.85	79	76084	67.27	ug/L	0.00
47) 2-Hexanone-d5	8.31	63	139548	150.11	ug/L	0.00
57) 1,1,2,2-Tetrachloroethane-	10.44	84	219022	71.41	ug/L	0.00
64) 1,2-Dichlorobenzene-d4	11.86	152	182793	68.78	ug/L	0.00

## Target Compounds

Target Compounds	R.T.	QIon	Response	Conc	Units	Qvalue
2) Dichlorodifluoromethane	1.20	85	135900	55.955	ug/L	100
3) Chloromethane	1.33	50	121246	58.708	ug/L	100
5) Vinyl chloride	1.40	62	120384	55.127	ug/L	100
6) Bromomethane	1.62	94	67655	66.296	ug/L	100
8) Chloroethane	1.69	64	70637	55.964	ug/L	100
9) Trichlorofluoromethane	1.88	101	166713	53.392	ug/L	100
10) 1,1,2-Trichloro-1,2,2-trif	2.29	101	100683	56.892	ug/L	100
12) 1,1-Dichloroethene	2.28	96	92571	57.387	ug/L	100
13) Acetone	2.32	43	114895	84.636	ug/L	100
14) Carbon disulfide	2.48	76	298746	52.805	ug/L	100
15) Methyl Acetate	2.62	43	124260	56.549	ug/L	100
16) Methylene chloride	2.70	84	111557	53.943	ug/L	100
17) trans-1,2-Dichloroethene	2.98	96	101599	52.362	ug/L	100
18) Methyl tert-butyl Ether	3.00	73	333313	53.810	ug/L	100
19) 1,1-Dichloroethane	3.45	63	193680	54.573	ug/L	100
20) cis-1,2-Dichloroethene	4.23	96	115244	53.057	ug/L	100
22) 2-Butanone	4.26	43	173775	100.253	ug/L	100
23) Bromochloromethane	4.55	128	62166	54.069	ug/L	100
25) Chloroform	4.68	83	204131	54.268	ug/L	100
27) 1,2-Dichloroethane	5.41	62	168887	55.884	ug/L	100
29) Cyclohexane	5.00	56	168594	53.961	ug/L	100
30) 1,1,1-Trichloroethane	4.92	97	185484	54.738	ug/L	100
31) Carbon tetrachloride	5.14	117	172165	56.537	ug/L	100
33) Benzene	5.39	78	426475	54.912	ug/L	100
34) Trichloroethene	6.19	95	110446	51.594	ug/L	100
35) Methylcyclohexane	6.42	83	172822	53.182	ug/L	100
37) 1,2-Dichloropropane	6.44	63	116404	55.982	ug/L	100
38) Bromodichloromethane	6.76	83	154789	54.905	ug/L	100
39) cis-1,3-Dichloropropene	7.27	75	183841	54.598	ug/L	100
40) 4-Methyl-2-pentanone	7.46	43	325984	114.398	ug/L	100

Data Path : Z:\VOASRV\HPCHEM1\MSVOA\_U\DATA\VV080918\  
 Data File : VU025980.D  
 Acq On : 08 Aug 2018 20:06  
 Operator : MD/SY  
 Sample : VSTD05044  
 Misc : 5.0mL/MSVOA\_U/WATER  
 ALS Vial : 6 Sample Multiplier: 1

Instrument :  
 MSVOA\_U  
 ClientSampleId :  
 VSTD05044

Quant Time: Aug 09 01:27:41 2018  
 Quant Method : Z:\VOASRV\HPCHEM1\MSVOA\_U\METHOD\SOMULM080918WMA.M  
 Quant Title : VOC Analysis  
 QLast Update : Thu Aug 09 01:26:57 2018  
 Response via : Initial Calibration

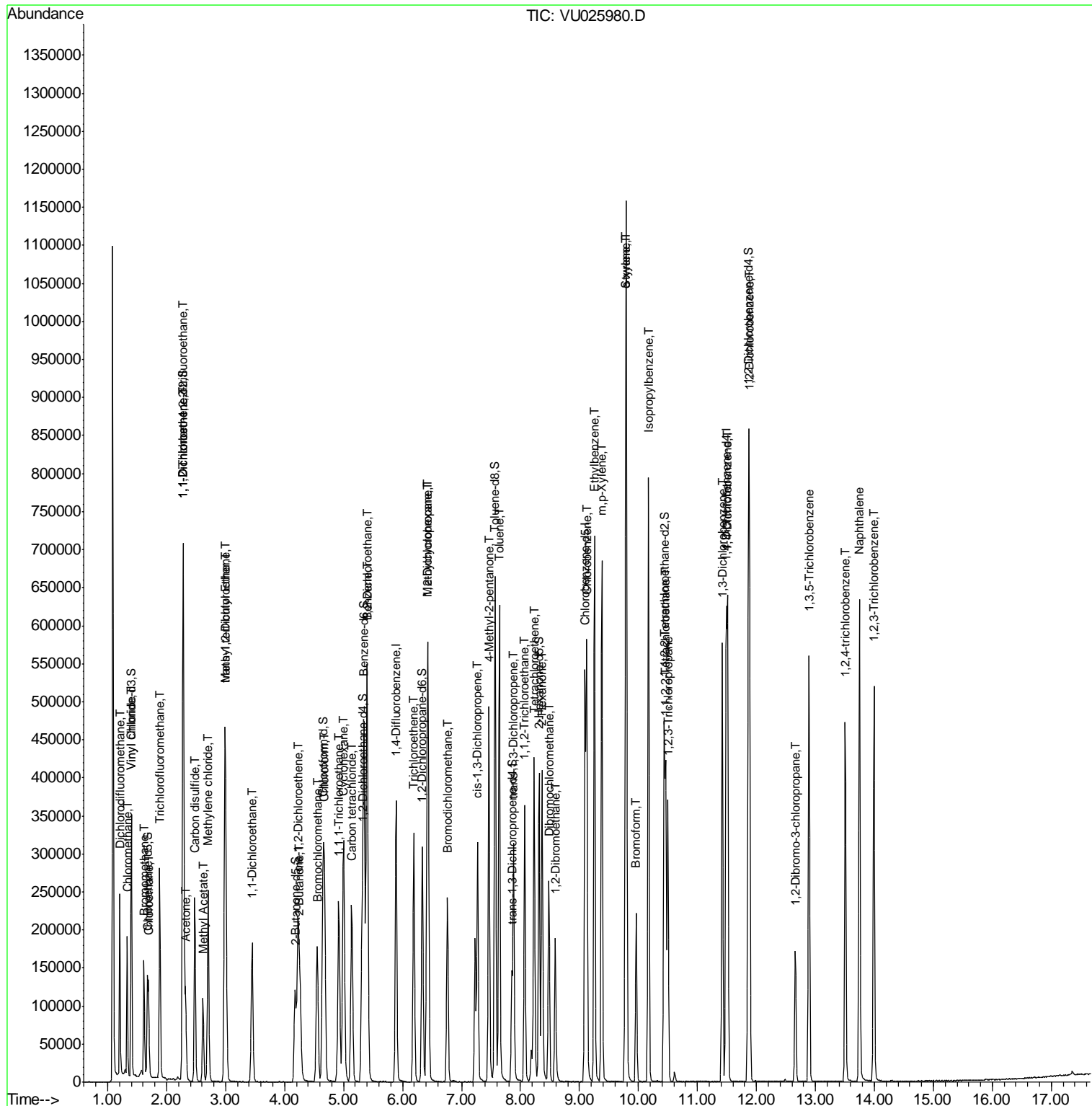
Internal Standards	R.T.	QIon	Response	Conc	Units	Dev(Min)
42) Toluene	7.64	91	461794	54.608	ug/L	100
44) trans-1,3-Dichloropropene	7.88	75	171244	54.159	ug/L	100
45) 1,1,2-Trichloroethane	8.07	97	112737	56.438	ug/L	100
46) Tetrachloroethene	8.23	164	93400	51.017	ug/L	100
48) 2-Hexanone	8.36	43	253891	111.330	ug/L	100
49) Dibromochloromethane	8.48	129	135777	55.731	ug/L	100
50) 1,2-Dibromoethane	8.59	107	120561	54.445	ug/L	100
51) Chlorobenzene	9.12	112	306871	53.227	ug/L	100
52) Ethylbenzene	9.25	91	504488	52.905	ug/L	100
53) m,p-Xylene	9.38	106	196322	52.435	ug/L	100
54) o-xylene	9.78	106	193106	54.039	ug/L	100
55) Styrene	9.80	104	326301	54.306	ug/L	100
56) Isopropylbenzene	10.17	105	503575	53.111	ug/L	100
58) 1,1,2,2-Tetrachloroethane	10.46	83	189094	56.215	ug/L	100
59) 1,2,3-Trichloropropane	10.50	75	150291	56.656	ug/L	100
61) Bromoform	9.96	173	100488	57.926	ug/L	100
62) 1,3-Dichlorobenzene	11.42	146	231199	52.112	ug/L	100
63) 1,4-Dichlorobenzene	11.51	146	238243	52.431	ug/L	100
65) 1,2-Dichlorobenzene	11.88	146	247180	54.851	ug/L	100
66) 1,2-Dibromo-3-chloropropan	12.66	75	42652	60.834	ug/L	100
67) 1,3,5-Trichlorobenzene	12.89	180	176338	53.661	ug/L	100
68) 1,2,4-trichlorobenzene	13.51	180	147990	52.631	ug/L	100
69) Naphthalene	13.75	128	504188	59.282	ug/L	100
70) 1,2,3-Trichlorobenzene	13.99	180	163758	55.688	ug/L	100

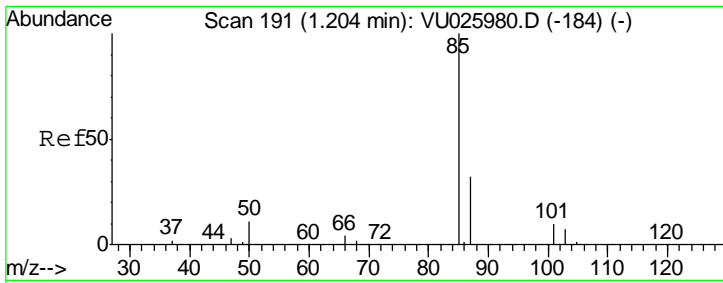
(#) = qualifier out of range (m) = manual integration (+) = signals summed

Data Path : Z:\VOASRV\HPCHEM1\MSVOA\_U\DATA\VV080918\  
 Data File : VU025980.D  
 Acq On : 08 Aug 2018 20:06  
 Operator : MD/SY  
 Sample : VSTD05044  
 Misc : 5.0mL/MSVOA\_U/WATER  
 ALS Vial : 6 Sample Multiplier: 1

Instrument :  
 MSVOA\_U  
 Client Sampled :  
 VSTD05044

Quant Time: Aug 09 01:27:41 2018  
 Quant Method : Z:\VOASRV\HPCHEM1\MSVOA\_U\METHOD\SOMULM080918WMA.M  
 Quant Title : VOC Analysis  
 QLast Update : Thu Aug 09 01:26:57 2018  
 Response via : Initial Calibration

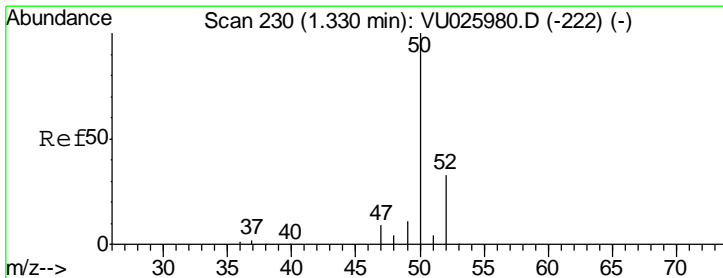
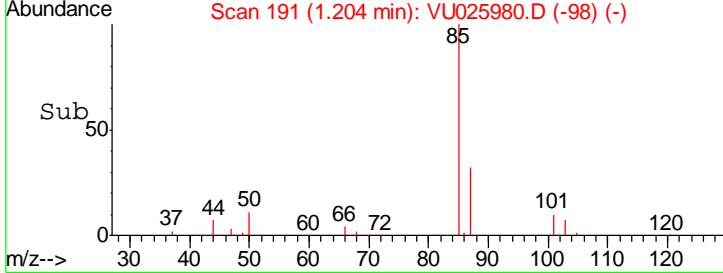
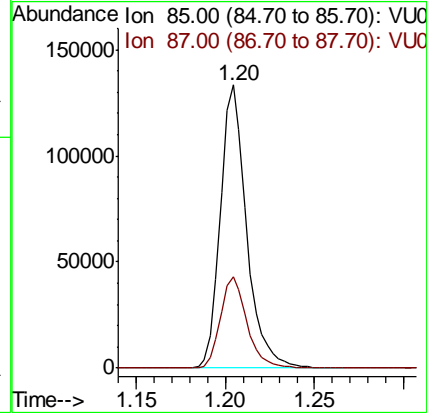
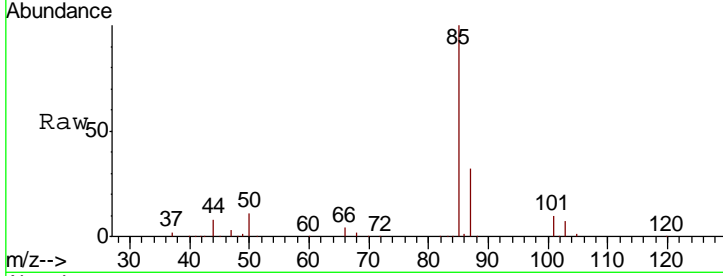




#2  
 Dichlorodifluoromethane  
 Concen: 55.955 ug/L  
 RT: 1.20 min Scan# 191  
 Delta R.T. 0.00 min  
 Lab File: VU025980.D  
 Acq: 08 Aug 2018 20:06

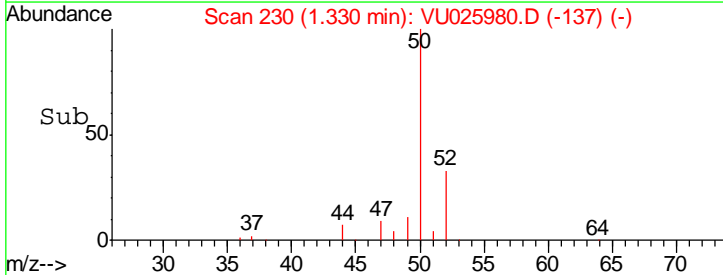
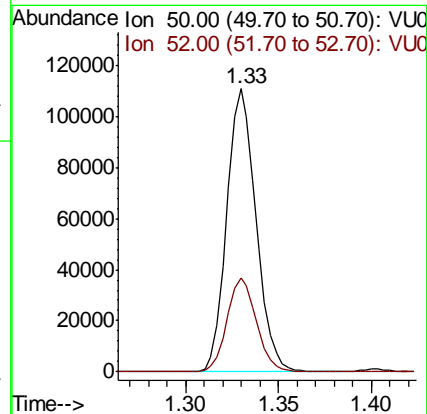
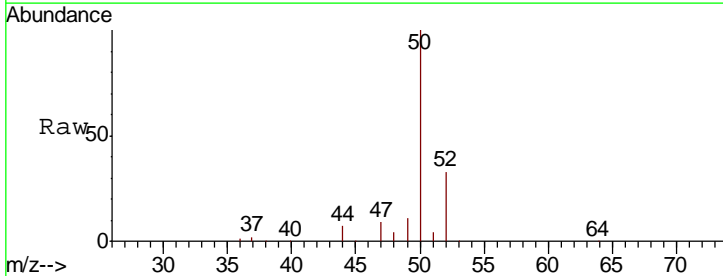
Instrument :  
 MSVOA\_U  
 ClientSampled :  
 VSTD05044

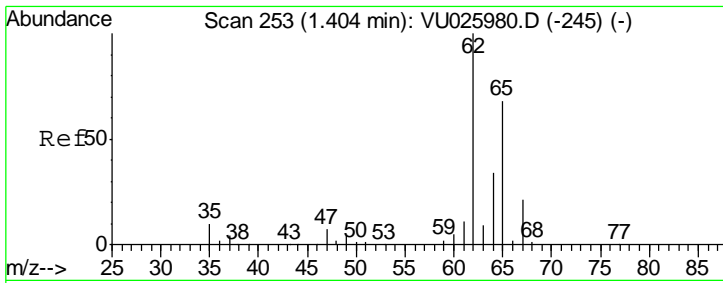
Tgt Ion: 85 Resp: 135900  
 Ion Ratio Lower Upper  
 85 100  
 87 32.6 26.1 39.1



#3  
 Chloromethane  
 Concen: 58.708 ug/L  
 RT: 1.33 min Scan# 230  
 Delta R.T. 0.00 min  
 Lab File: VU025980.D  
 Acq: 08 Aug 2018 20:06

Tgt Ion: 50 Resp: 121246  
 Ion Ratio Lower Upper  
 50 100  
 52 33.4 23.4 43.4



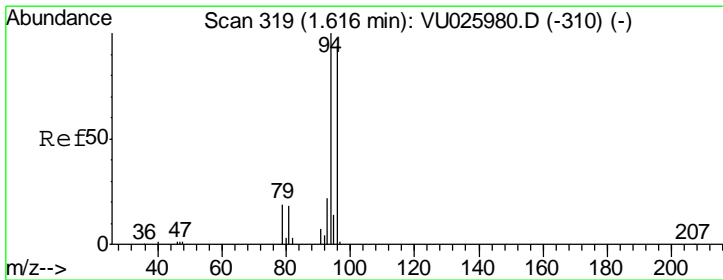
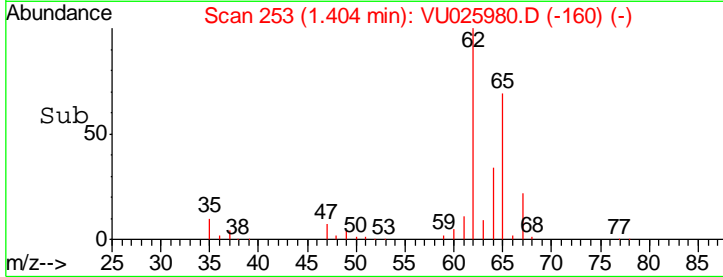
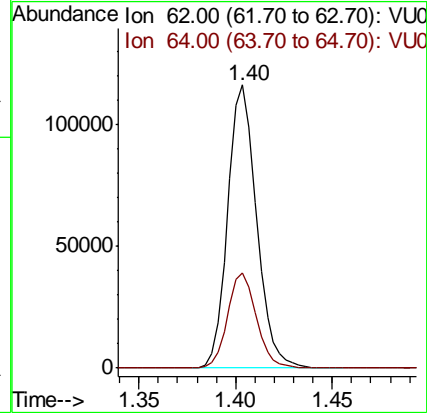
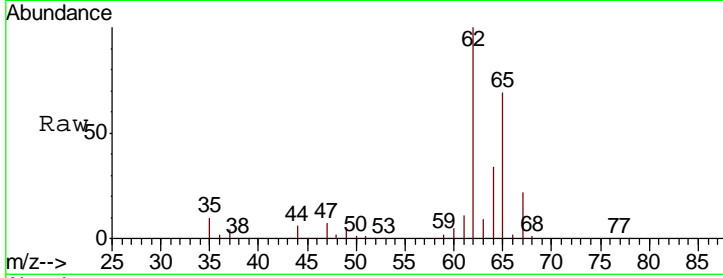


#5  
 Vinyl chloride  
 Concen: 55.127 ug/L  
 RT: 1.40 min Scan# 253  
 Delta R.T. 0.00 min  
 Lab File: VU025980.D  
 Acq: 08 Aug 2018 20:06

Instrument :  
 MSVOA\_U  
 ClientSampled :  
 VSTD05044

Tgt Ion: 62 Resp: 120384

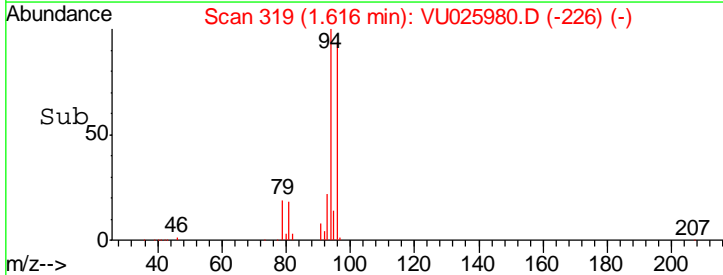
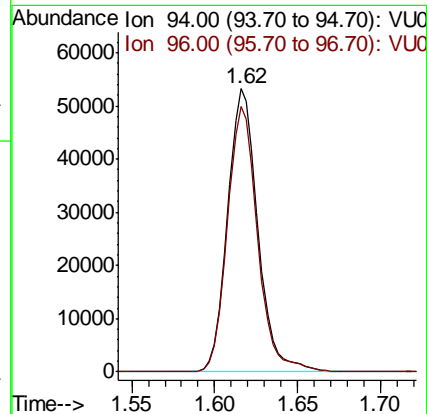
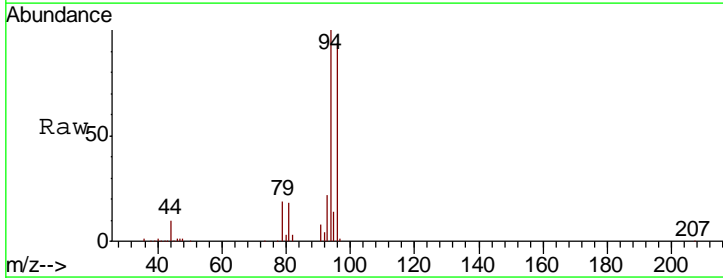
Ion	Ratio	Lower	Upper
62	100		
64	33.8	23.7	43.9

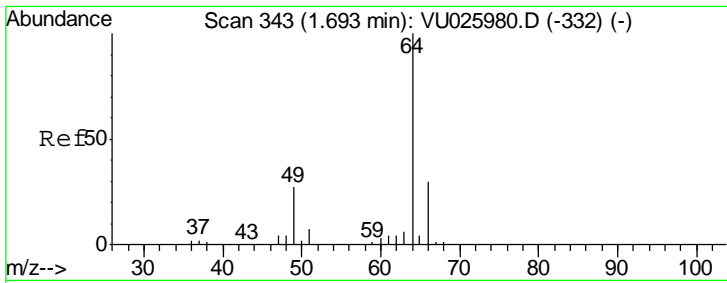


#6  
 Bromomethane  
 Concen: 66.296 ug/L  
 RT: 1.62 min Scan# 319  
 Delta R.T. 0.00 min  
 Lab File: VU025980.D  
 Acq: 08 Aug 2018 20:06

Tgt Ion: 94 Resp: 67655

Ion	Ratio	Lower	Upper
94	100		
96	93.7	65.6	121.8

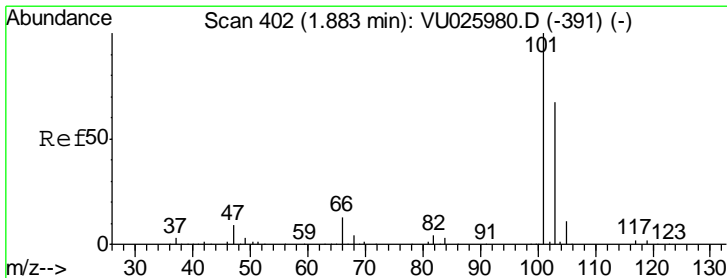
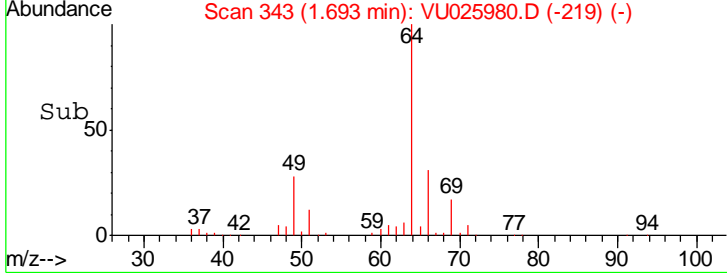
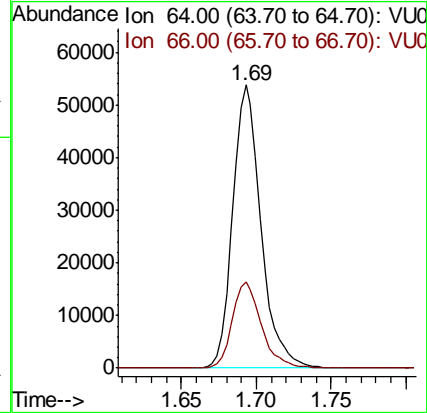
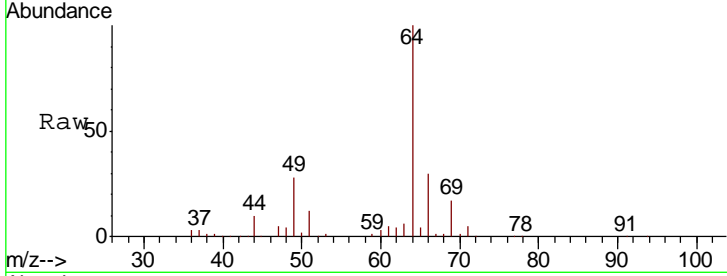




#8  
 Chloroethane  
 Concen: 55.964 ug/L  
 RT: 1.69 min Scan# 343  
 Delta R.T. 0.00 min  
 Lab File: VU025980.D  
 Acq: 08 Aug 2018 20:06

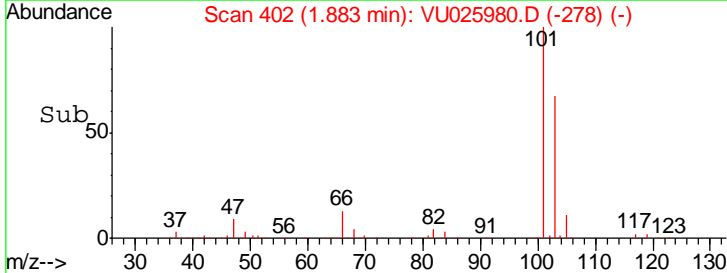
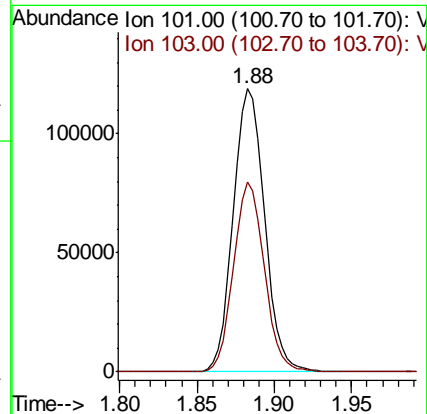
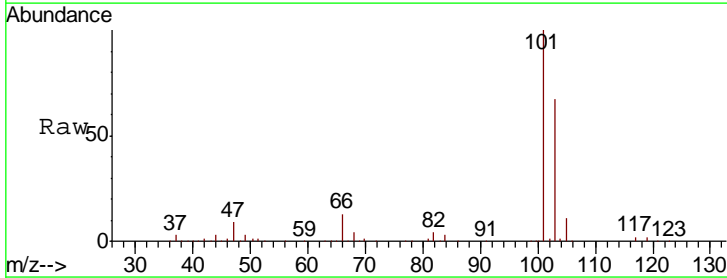
Instrument :  
 MSVOA\_U  
 ClientSampled :  
 VSTD05044

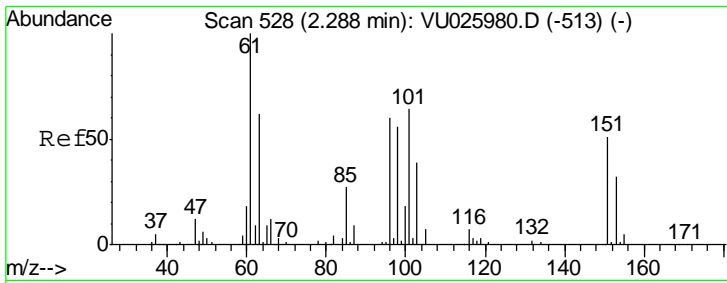
Tgt Ion: 64 Resp: 70637  
 Ion Ratio Lower Upper  
 64 100  
 66 30.3 21.2 39.4



#9  
 Trichlorofluoromethane  
 Concen: 53.392 ug/L  
 RT: 1.88 min Scan# 402  
 Delta R.T. 0.00 min  
 Lab File: VU025980.D  
 Acq: 08 Aug 2018 20:06

Tgt Ion: 101 Resp: 166713  
 Ion Ratio Lower Upper  
 101 100  
 103 65.9 52.7 79.1

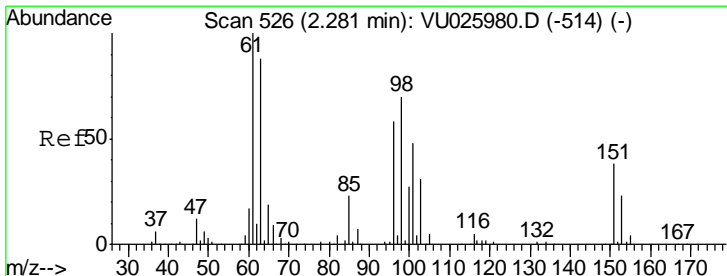
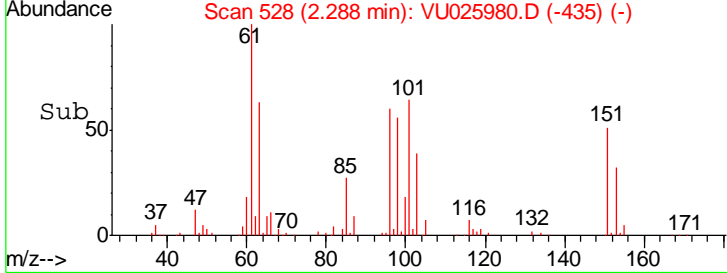
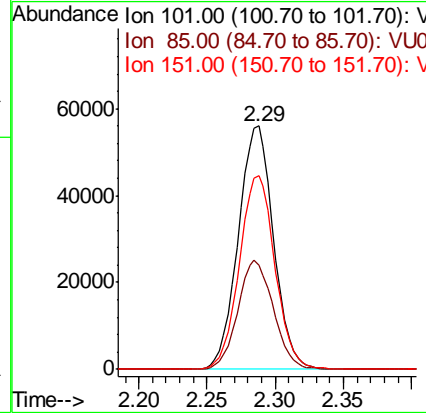
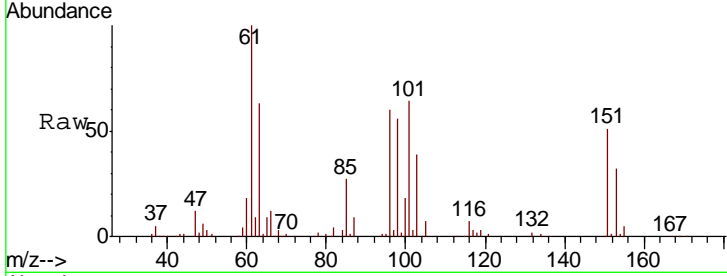




#10  
 1,1,2-Trichloro-1,2,2-trifluoroethane  
 Concen: 56.892 ug/L  
 RT: 2.29 min Scan# 528  
 Delta R.T. 0.00 min  
 Lab File: VU025980.D  
 Acq: 08 Aug 2018 20:06

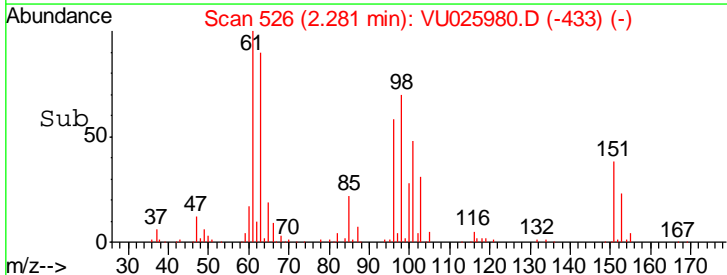
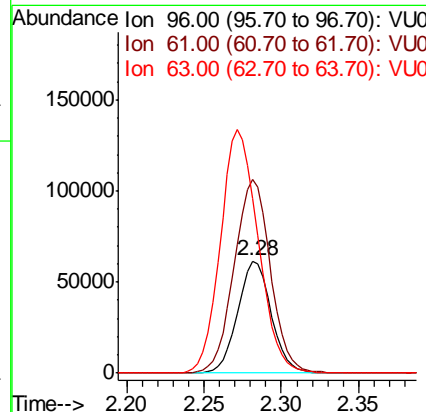
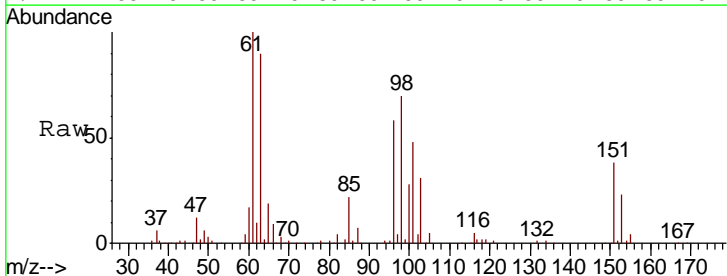
Instrument :  
 MSVOA\_U  
 ClientSampled :  
 VSTD05044

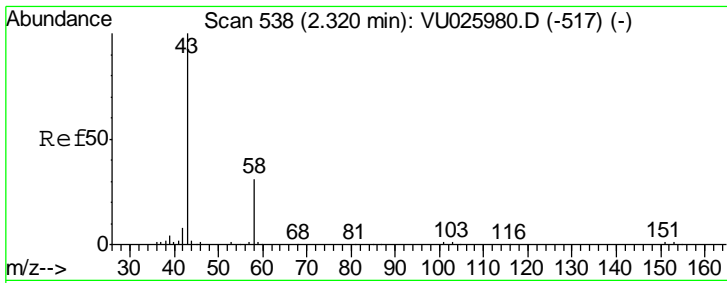
Tgt Ion	Resp	Lower	Upper
101	100683		
85	45.0	36.0	54.0
151	80.2	64.2	96.2



#12  
 1,1-Dichloroethene  
 Concen: 57.387 ug/L  
 RT: 2.28 min Scan# 526  
 Delta R.T. 0.00 min  
 Lab File: VU025980.D  
 Acq: 08 Aug 2018 20:06

Tgt Ion	Resp	Lower	Upper
96	92571		
61	173.2	121.2	225.2
63	155.3	108.7	201.9

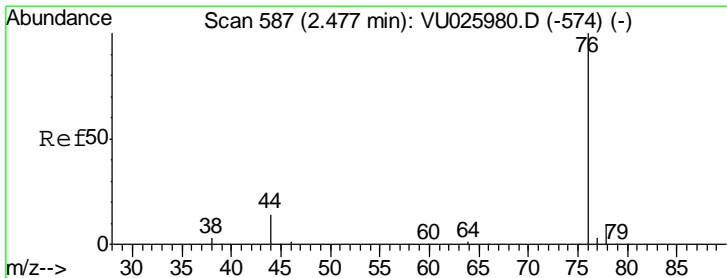
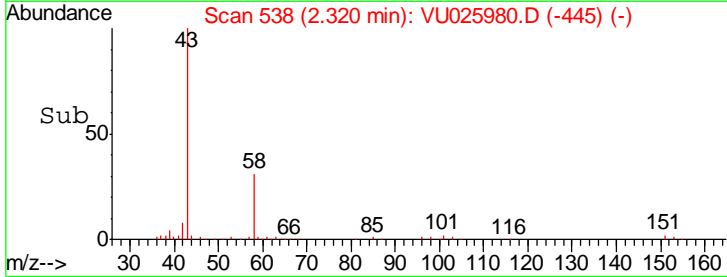
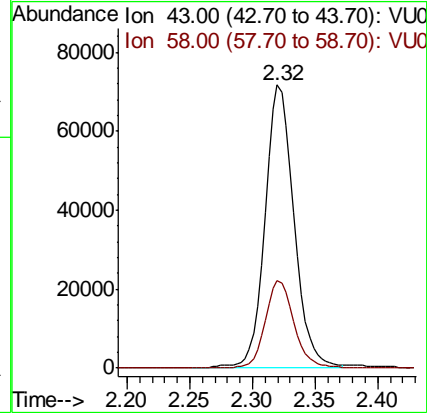
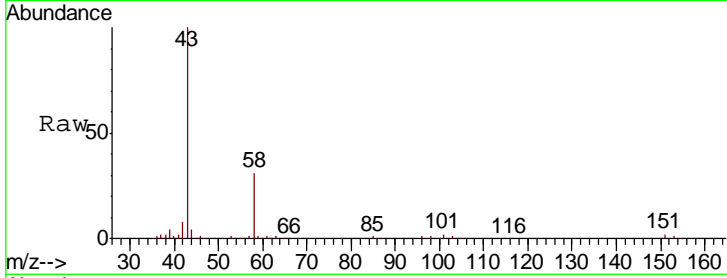




#13  
 Acetone  
 Concen: 84.636 ug/L  
 RT: 2.32 min Scan# 538  
 Delta R.T. 0.00 min  
 Lab File: VU025980.D  
 Acq: 08 Aug 2018 20:06

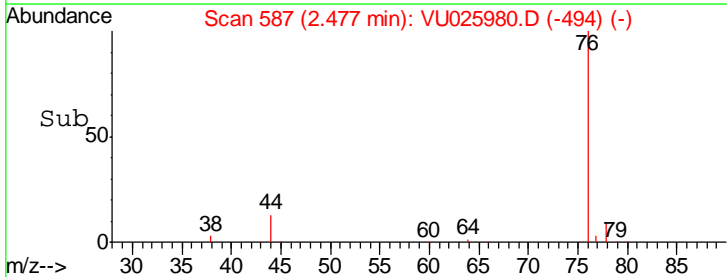
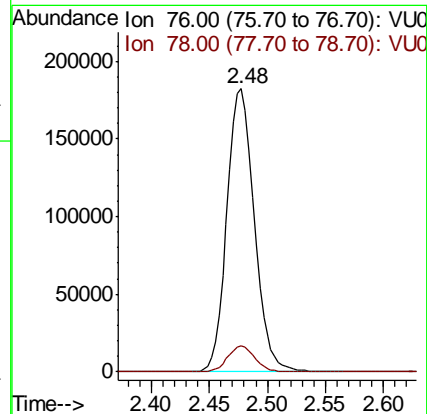
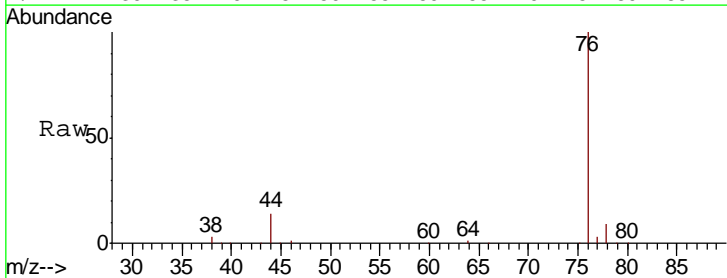
Instrument :  
 MSVOA\_U  
 ClientSampled :  
 VSTD05044

Tgt Ion	Resp	Lower	Upper
43	114895		
58	30.9	0.0	61.8

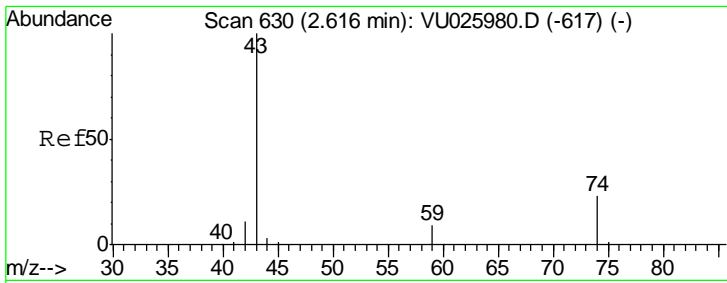


#14  
 Carbon disulfide  
 Concen: 52.805 ug/L  
 RT: 2.48 min Scan# 587  
 Delta R.T. 0.00 min  
 Lab File: VU025980.D  
 Acq: 08 Aug 2018 20:06

Tgt Ion	Resp	Lower	Upper
76	298746		
78	9.0	7.2	10.8



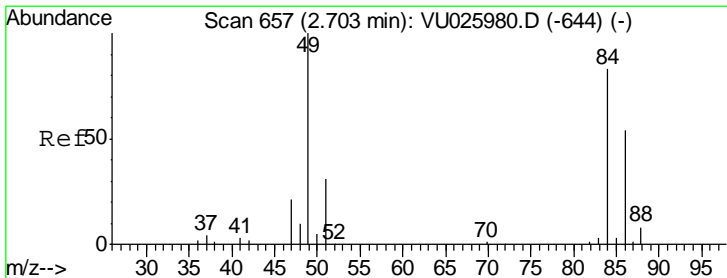
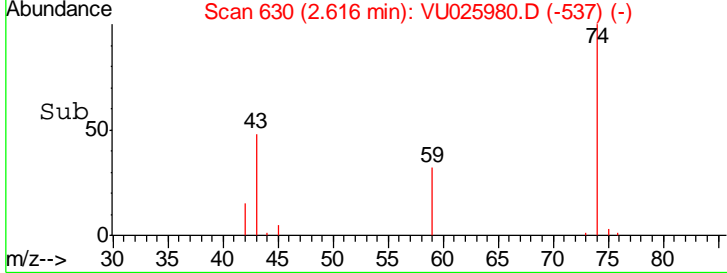
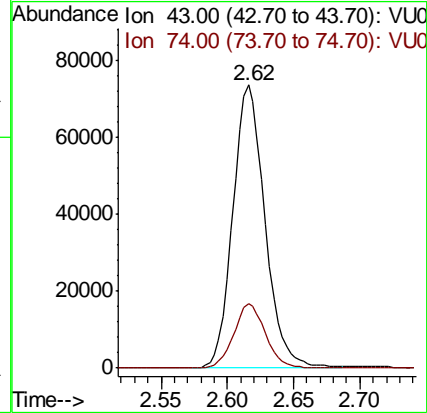
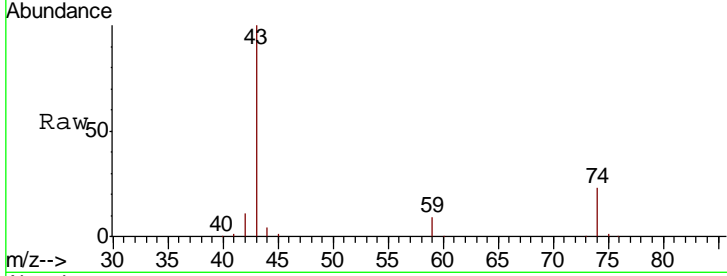




#15  
 Methyl Acetate  
 Concen: 56.549 ug/L  
 RT: 2.62 min Scan# 630  
 Delta R.T. 0.00 min  
 Lab File: VU025980.D  
 Acq: 08 Aug 2018 20:06

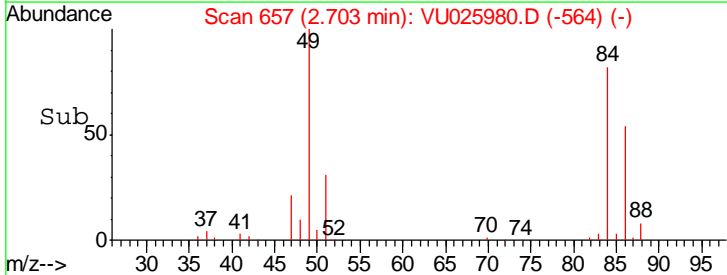
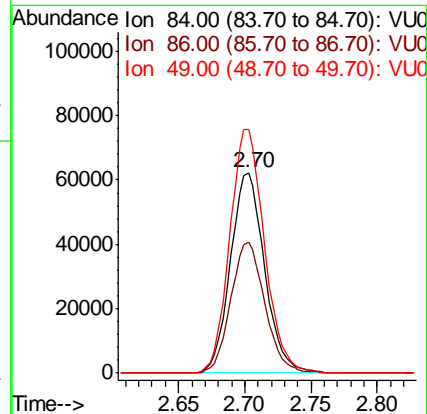
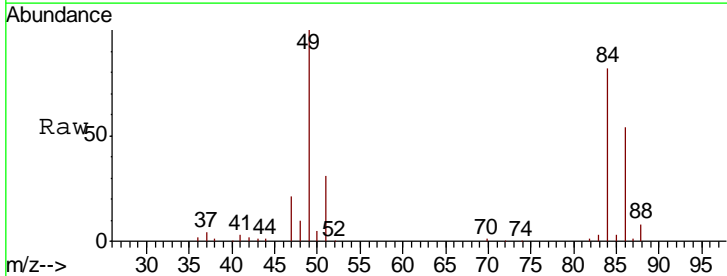
Instrument :  
 MSVOA\_U  
 ClientSampled :  
 VSTD05044

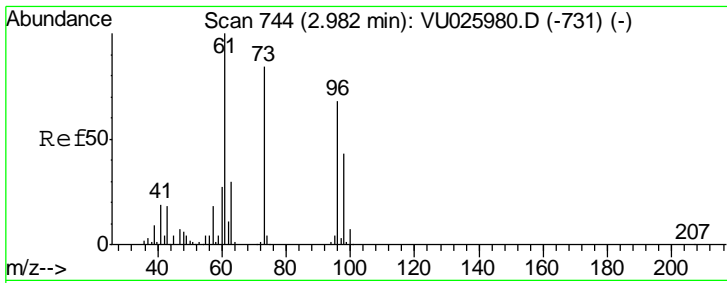
Tgt Ion	Resp	Lower	Upper
43	124260		
74	22.3	17.8	26.8



#16  
 Methylene chloride  
 Concen: 53.943 ug/L  
 RT: 2.70 min Scan# 657  
 Delta R.T. 0.00 min  
 Lab File: VU025980.D  
 Acq: 08 Aug 2018 20:06

Tgt Ion	Resp	Lower	Upper
84	111557		
86	65.4	45.8	85.0
49	121.4	85.0	157.8

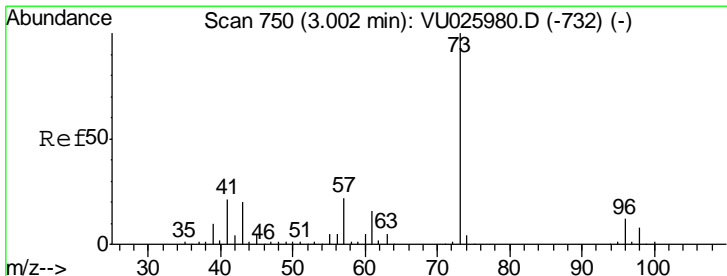
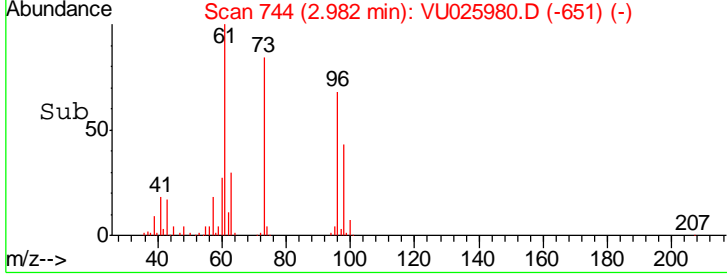
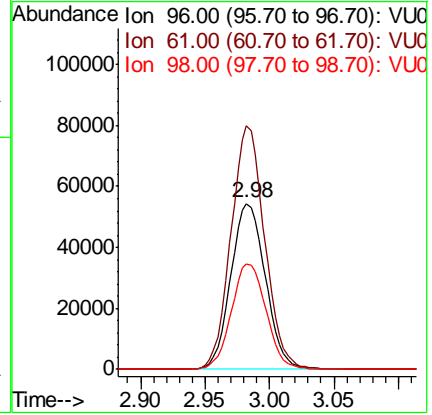
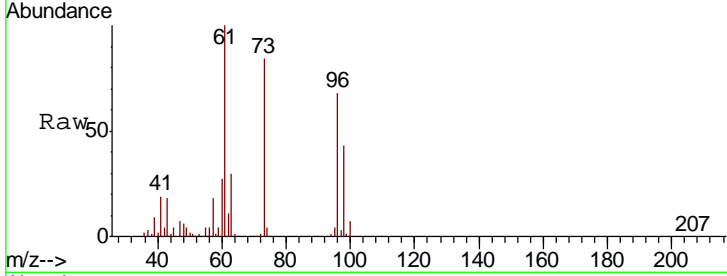




#17  
 trans-1,2-Dichloroethene  
 Concen: 52.362 ug/L  
 RT: 2.98 min Scan# 744  
 Delta R.T. 0.00 min  
 Lab File: VU025980.D  
 Acq: 08 Aug 2018 20:06

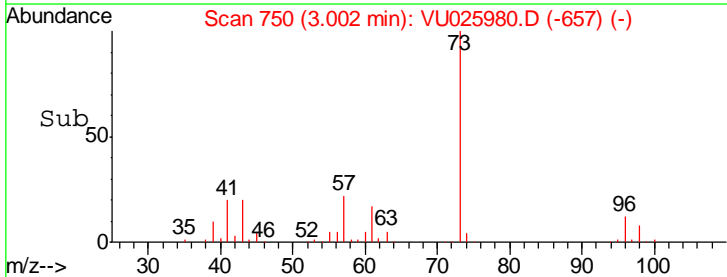
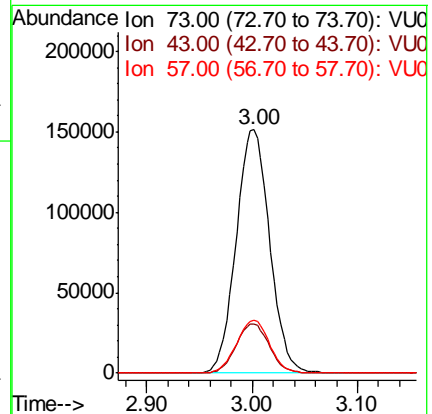
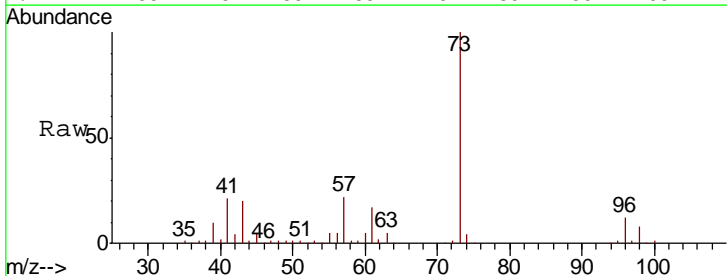
**Instrument :**  
 MSVOA\_U  
**ClientSampled :**  
 VSTD05044

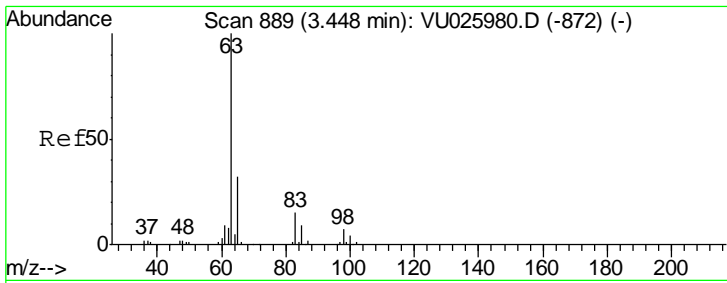
Tgt Ion	Resp	Lower	Upper
96	101599		
61	146.8	102.8	190.8
98	63.9	44.7	83.1



#18  
 Methyl tert-butyl Ether  
 Concen: 53.810 ug/L  
 RT: 3.00 min Scan# 750  
 Delta R.T. 0.00 min  
 Lab File: VU025980.D  
 Acq: 08 Aug 2018 20:06

Tgt Ion	Resp	Lower	Upper
73	333313		
43	20.4	16.3	24.5
57	21.4	17.1	25.7

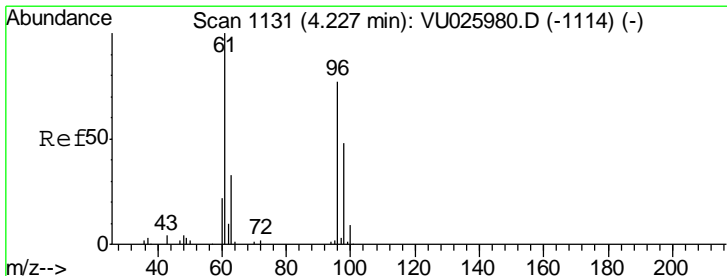
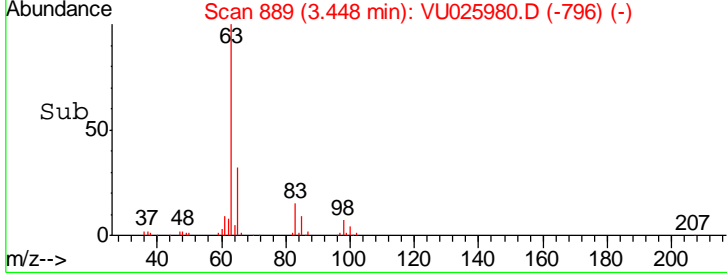
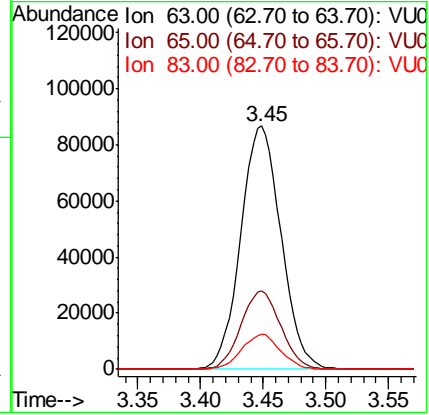
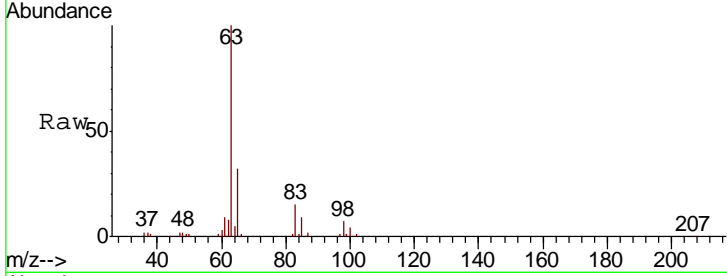




#19  
 1,1-Dichloroethane  
 Concen: 54.573 ug/L  
 RT: 3.45 min Scan# 889  
 Delta R.T. 0.00 min  
 Lab File: VU025980.D  
 Acq: 08 Aug 2018 20:06

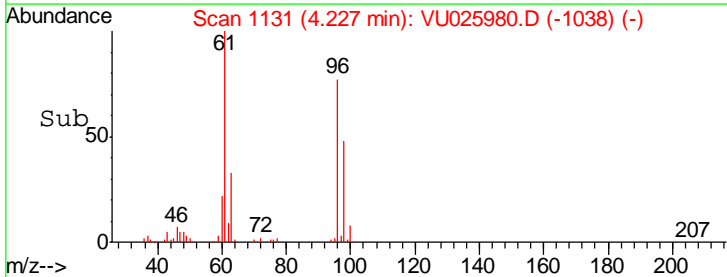
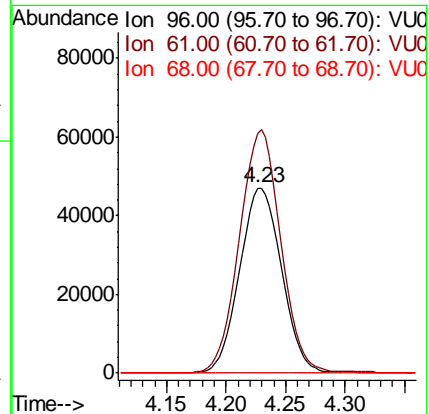
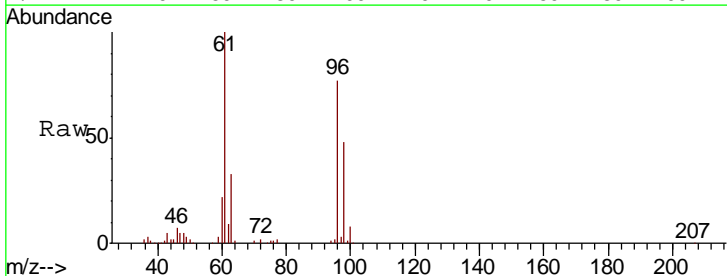
Instrument :  
 MSVOA\_U  
 ClientSampled :  
 VSTD05044

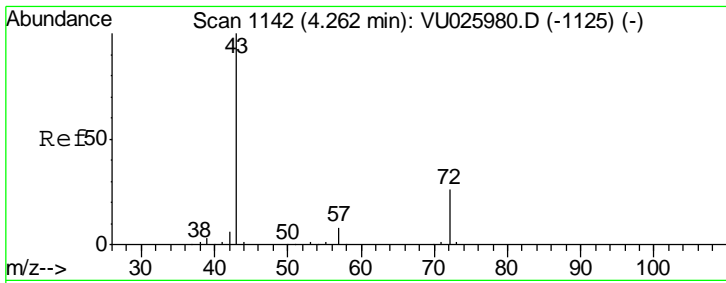
Tgt Ion	Resp	Lower	Upper
63	193680		
65	32.0	22.4	41.6
83	14.5	10.1	18.9



#20  
 cis-1,2-Dichloroethene  
 Concen: 53.057 ug/L  
 RT: 4.23 min Scan# 1131  
 Delta R.T. 0.00 min  
 Lab File: VU025980.D  
 Acq: 08 Aug 2018 20:06

Tgt Ion	Resp	Lower	Upper
96	115244		
61	129.6	90.7	168.5
68	0.0	0.0	0.0

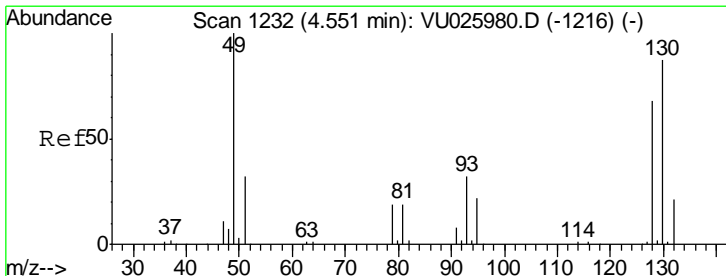
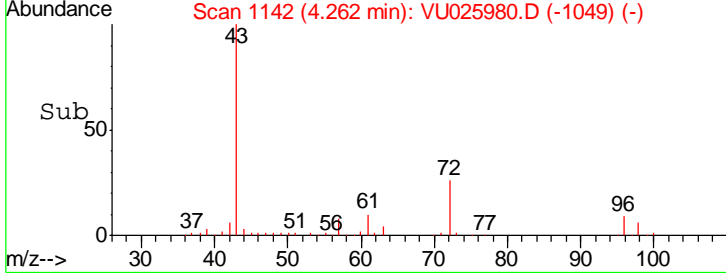
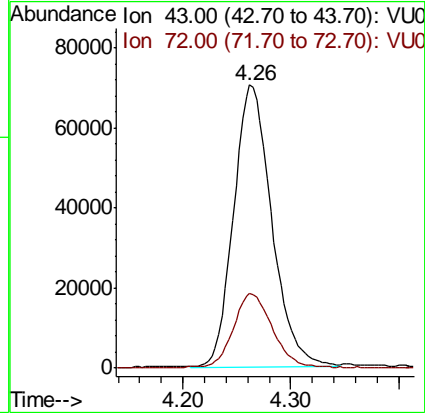
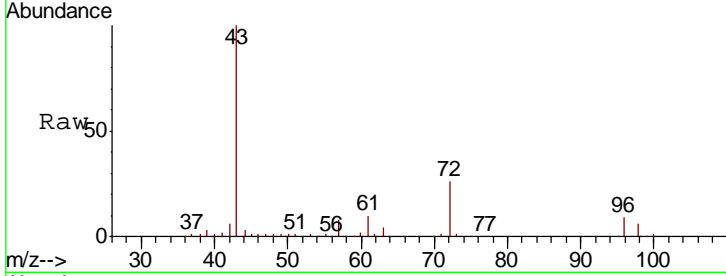




#22  
 2-Butanone  
 Concen: 100.253 ug/L  
 RT: 4.26 min Scan# 1142  
 Delta R.T. 0.00 min  
 Lab File: VU025980.D  
 Acq: 08 Aug 2018 20:06

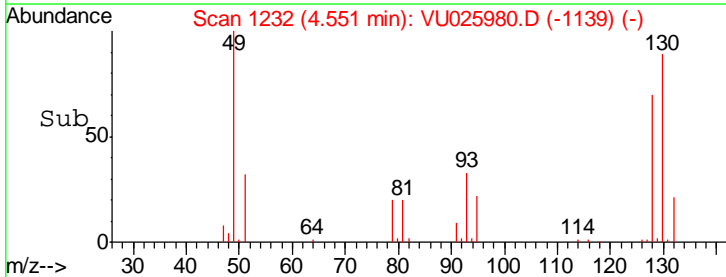
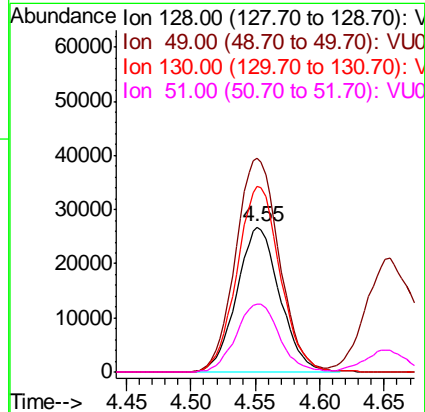
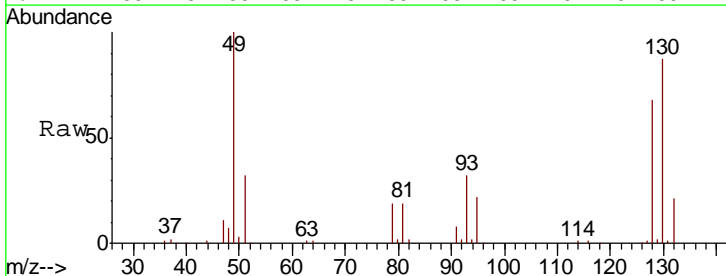
Instrument :  
 MSVOA\_U  
 ClientSampled :  
 VSTD05044

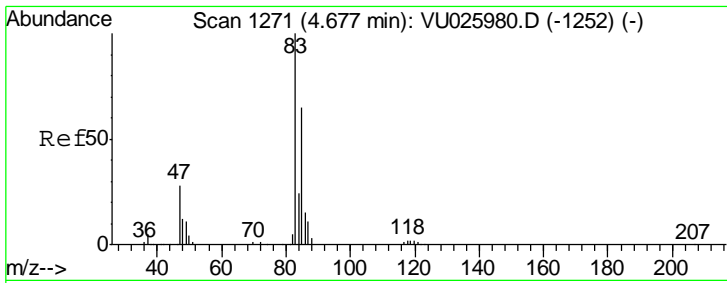
Tgt Ion	Resp	Lower	Upper
43	173775		
72	27.0	13.5	40.5



#23  
 Bromochloromethane  
 Concen: 54.069 ug/L  
 RT: 4.55 min Scan# 1232  
 Delta R.T. 0.00 min  
 Lab File: VU025980.D  
 Acq: 08 Aug 2018 20:06

Tgt Ion	Resp	Lower	Upper
128	62166		
49	147.1	103.0	191.2
130	127.8	89.5	166.1
51	47.1	37.7	56.5

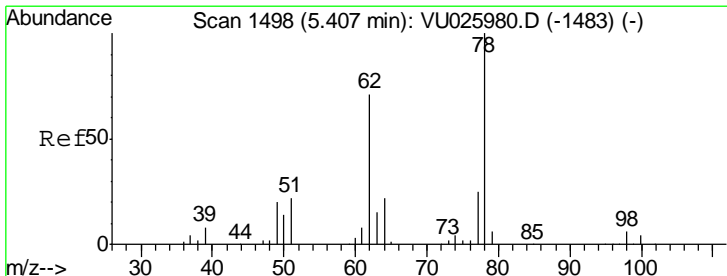
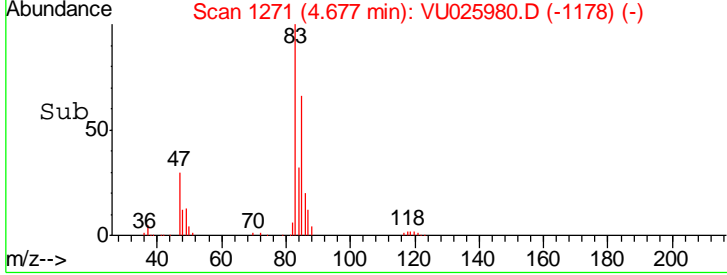
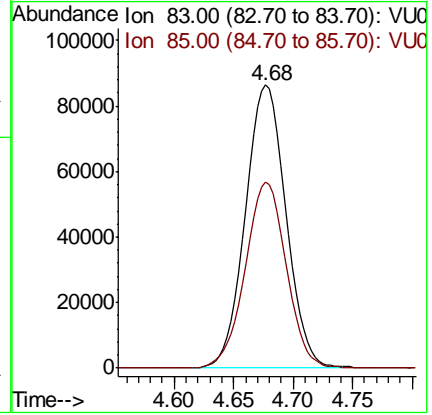
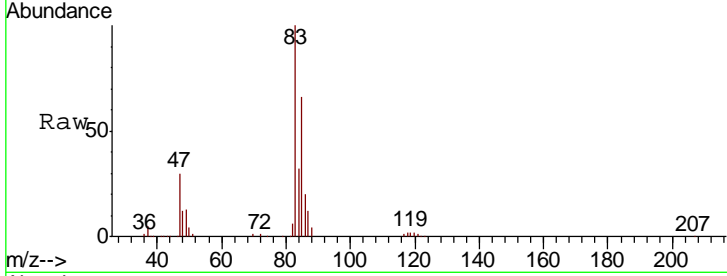




#25  
 Chloroform  
 Concen: 54.268 ug/L  
 RT: 4.68 min Scan# 1271  
 Delta R.T. 0.00 min  
 Lab File: VU025980.D  
 Acq: 08 Aug 2018 20:06

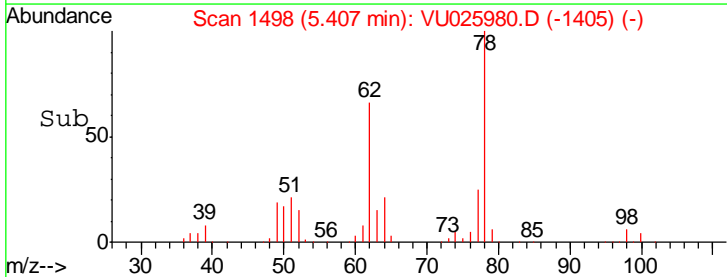
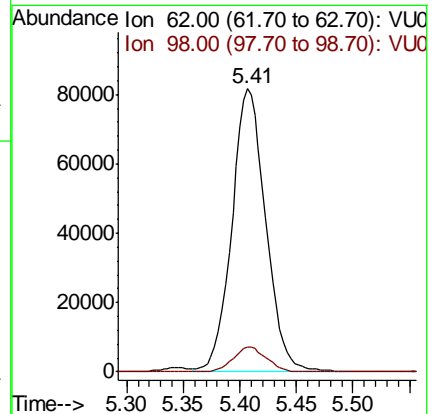
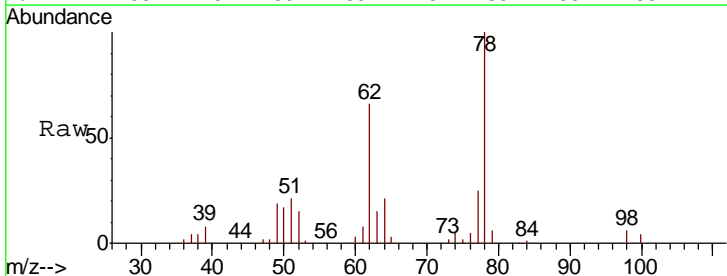
Instrument :  
 MSVOA\_U  
 ClientSampled :  
 VSTD05044

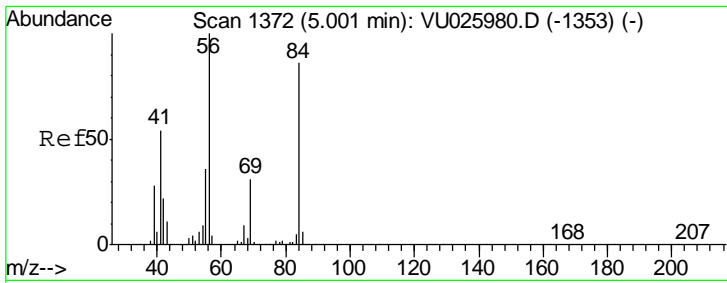
Tgt Ion: 83 Resp: 204131  
 Ion Ratio Lower Upper  
 83 100  
 85 65.6 45.9 85.3



#27  
 1,2-Dichloroethane  
 Concen: 55.884 ug/L  
 RT: 5.41 min Scan# 1498  
 Delta R.T. 0.00 min  
 Lab File: VU025980.D  
 Acq: 08 Aug 2018 20:06

Tgt Ion: 62 Resp: 168887  
 Ion Ratio Lower Upper  
 62 100  
 98 8.7 7.0 10.4

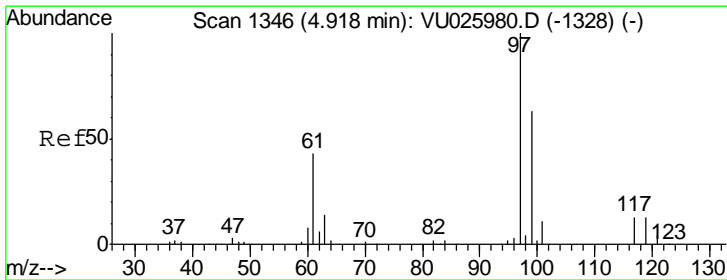
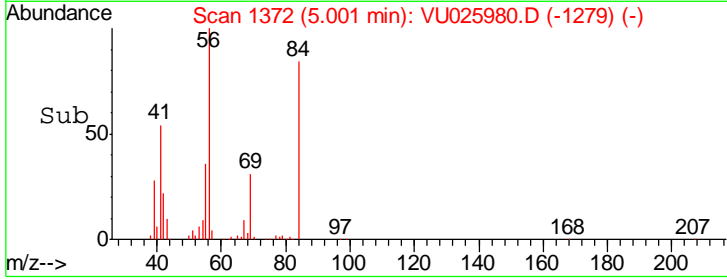
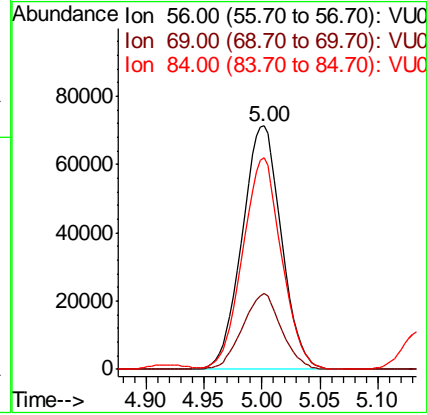
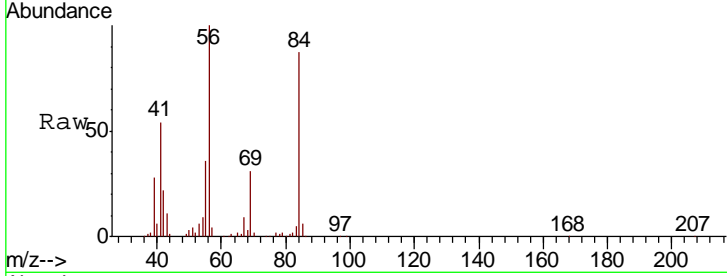




#29  
 Cyclohexane  
 Concen: 53.961 ug/L  
 RT: 5.00 min Scan# 1372  
 Delta R.T. 0.00 min  
 Lab File: VU025980.D  
 Acq: 08 Aug 2018 20:06

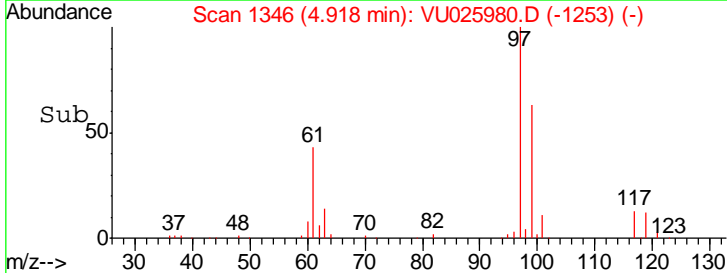
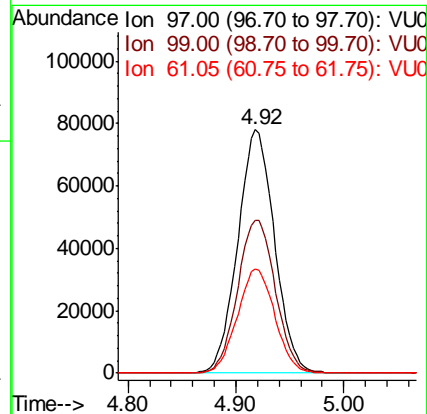
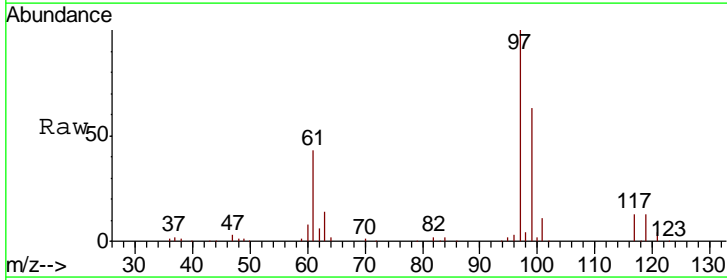
Instrument :  
 MSVOA\_U  
 ClientSampled :  
 VSTD05044

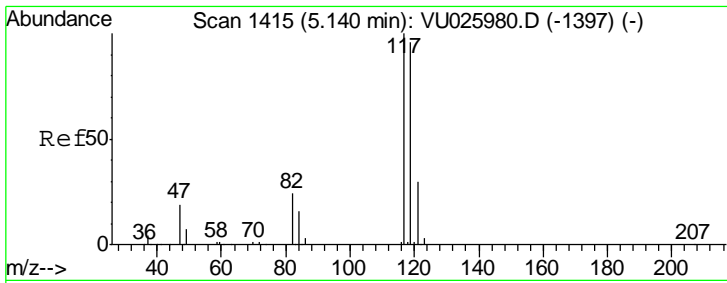
Tgt Ion	Resp	Lower	Upper
56	168594		
69	30.8	24.6	37.0
84	85.8	68.6	103.0



#30  
 1,1,1-Trichloroethane  
 Concen: 54.738 ug/L  
 RT: 4.92 min Scan# 1346  
 Delta R.T. 0.00 min  
 Lab File: VU025980.D  
 Acq: 08 Aug 2018 20:06

Tgt Ion	Resp	Lower	Upper
97	185484		
99	64.7	51.8	77.6
61	43.4	34.7	52.1

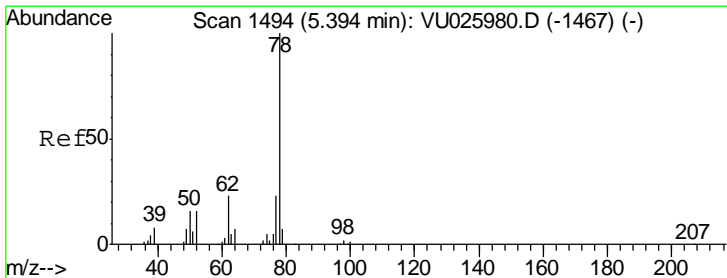
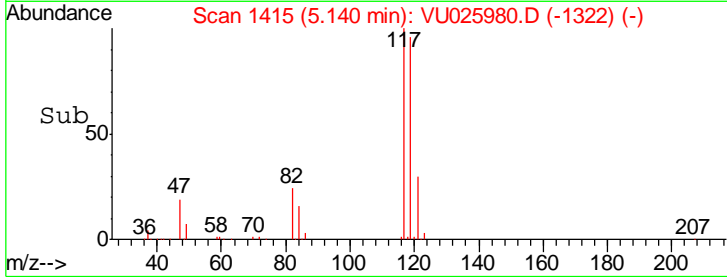
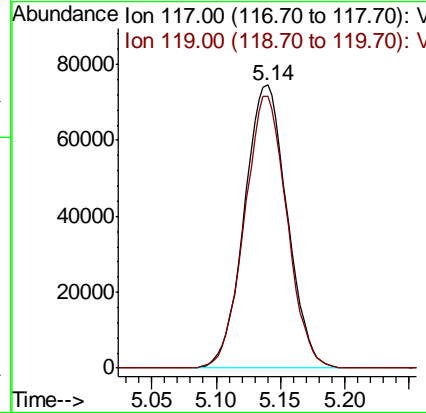
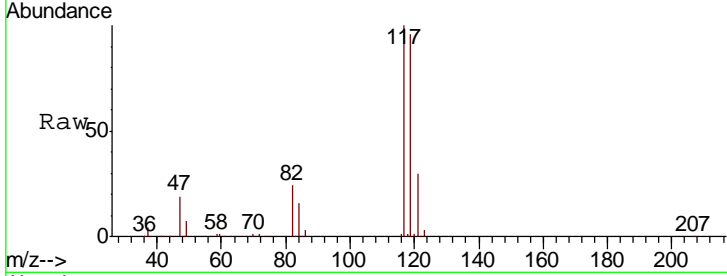




#31  
 Carbon tetrachloride  
 Concen: 56.537 ug/L  
 RT: 5.14 min Scan# 1415  
 Delta R.T. 0.00 min  
 Lab File: VU025980.D  
 Acq: 08 Aug 2018 20:06

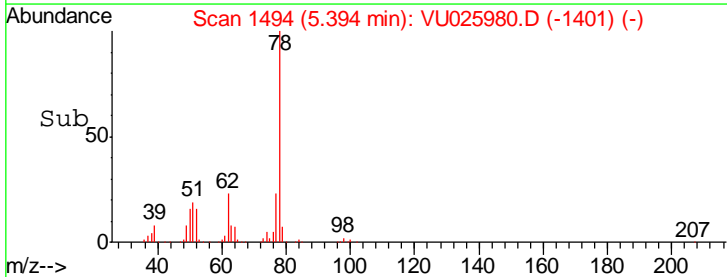
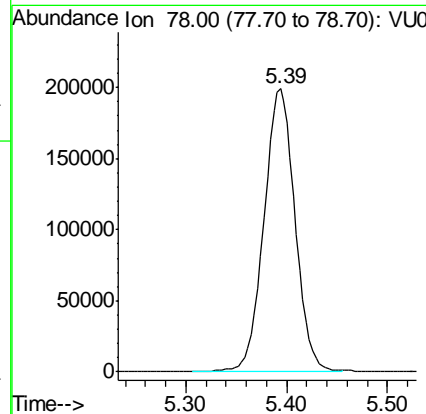
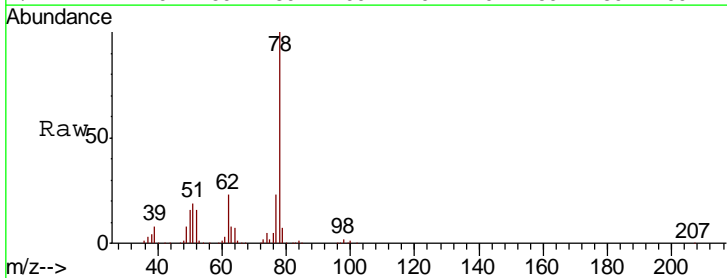
Instrument :  
 MSVOA\_U  
 ClientSampled :  
 VSTD05044

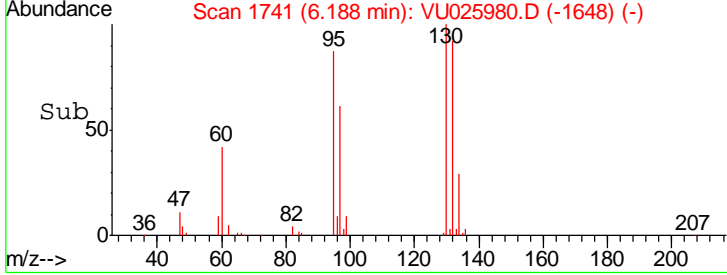
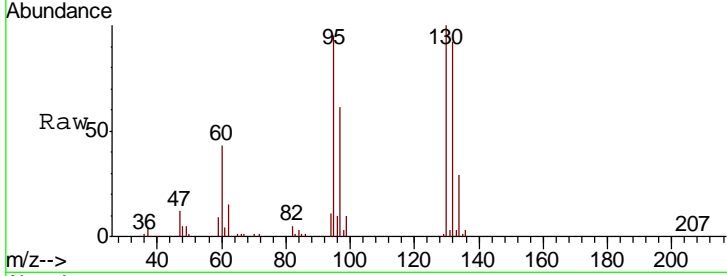
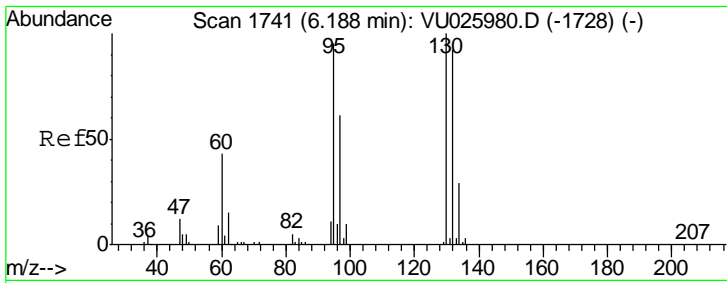
Tgt Ion: 117 Resp: 172165  
 Ion Ratio Lower Upper  
 117 100  
 119 95.4 76.3 114.5



#33  
 Benzene  
 Concen: 54.912 ug/L  
 RT: 5.39 min Scan# 1494  
 Delta R.T. 0.00 min  
 Lab File: VU025980.D  
 Acq: 08 Aug 2018 20:06

Tgt Ion: 78 Resp: 426475

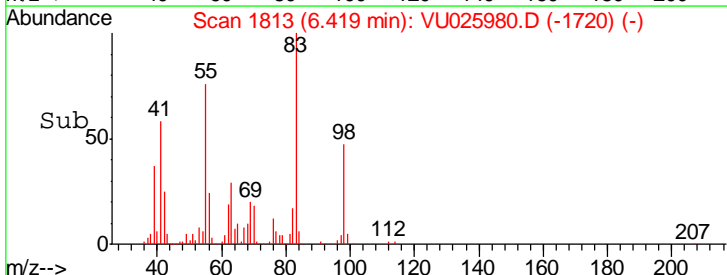
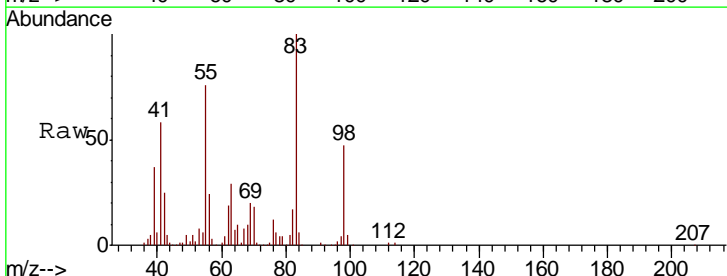
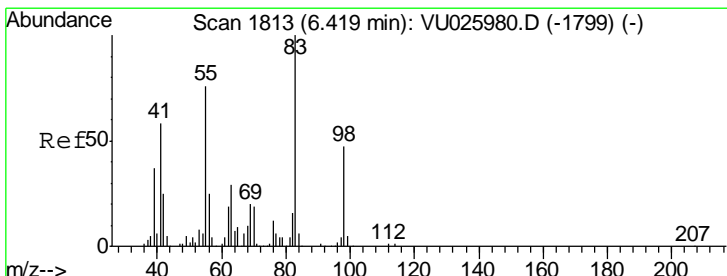
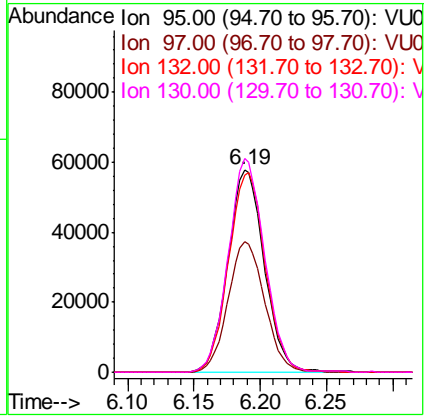




#34  
 Trichloroethene  
 Concen: 51.594 ug/L  
 RT: 6.19 min Scan# 1741  
 Delta R.T. 0.00 min  
 Lab File: VU025980.D  
 Acq: 08 Aug 2018 20:06

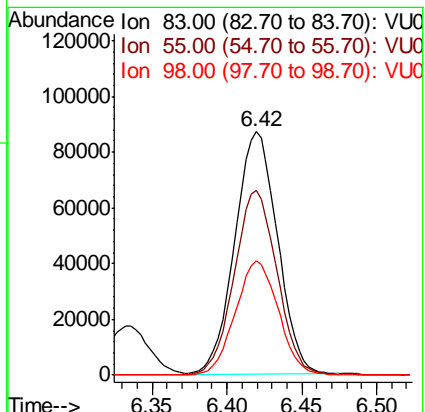
Instrument : MSVOA\_U  
 ClientSampled : VSTD05044

Tgt Ion	Resp	Lower	Upper
95	110446		
97	64.6	45.2	84.0
132	97.4	68.2	126.6
130	105.5	73.8	137.2

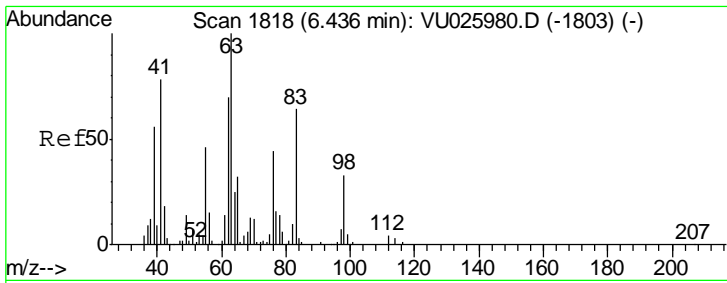


#35  
 Methylcyclohexane  
 Concen: 53.182 ug/L  
 RT: 6.42 min Scan# 1813  
 Delta R.T. 0.00 min  
 Lab File: VU025980.D  
 Acq: 08 Aug 2018 20:06

Tgt Ion	Resp	Lower	Upper
83	172822		
55	76.3	61.0	91.6
98	47.6	38.1	57.1



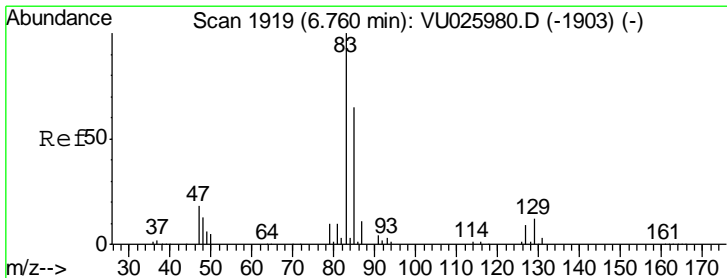
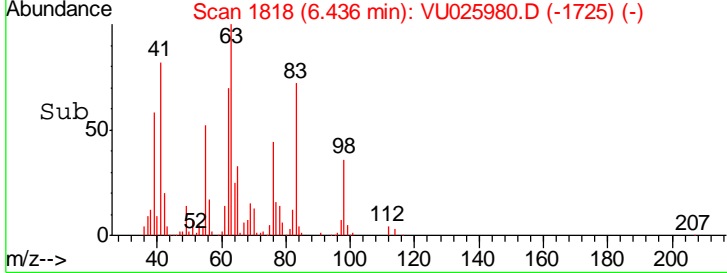
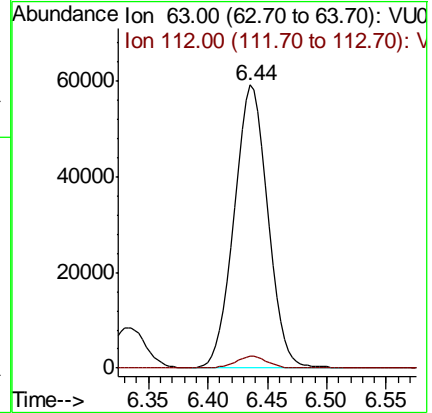
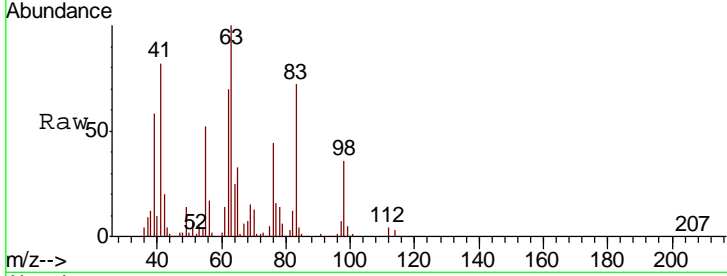




#37  
 1,2-Dichloropropane  
 Concen: 55.982 ug/L  
 RT: 6.44 min Scan# 1818  
 Delta R.T. 0.00 min  
 Lab File: VU025980.D  
 Acq: 08 Aug 2018 20:06

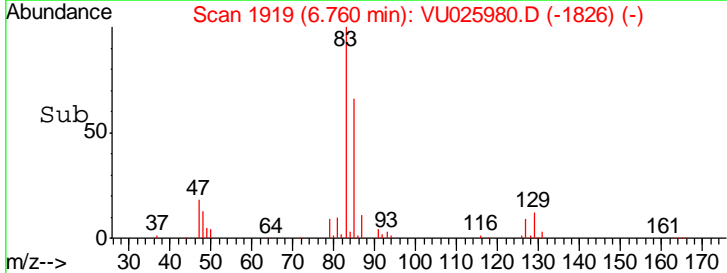
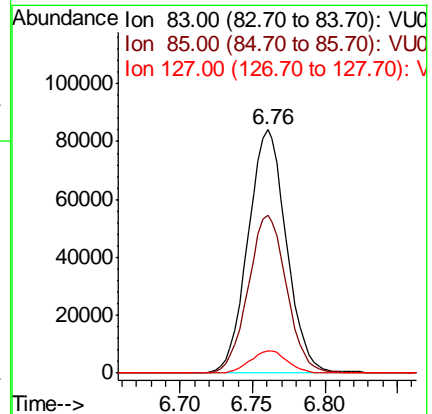
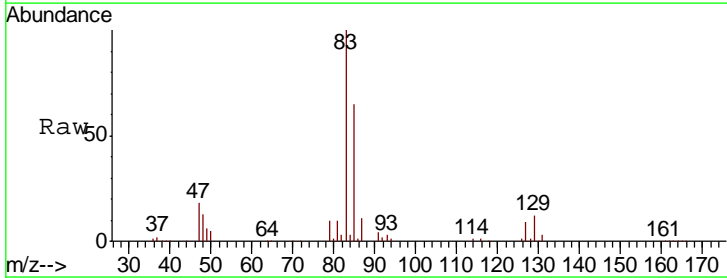
Instrument :  
 MSVOA\_U  
 ClientSampled :  
 VSTD05044

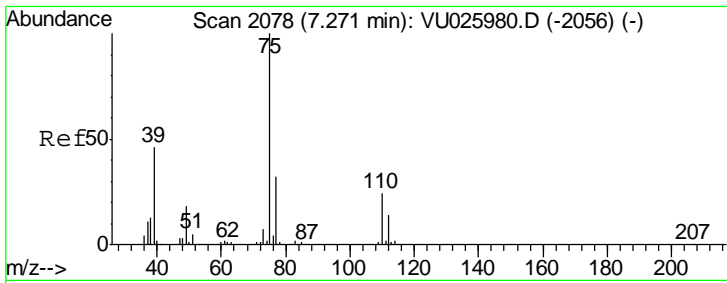
Tgt Ion: 63 Resp: 116404  
 Ion Ratio Lower Upper  
 63 100  
 112 4.0 3.2 4.8



#38  
 Bromodichloromethane  
 Concen: 54.905 ug/L  
 RT: 6.76 min Scan# 1919  
 Delta R.T. 0.00 min  
 Lab File: VU025980.D  
 Acq: 08 Aug 2018 20:06

Tgt Ion: 83 Resp: 154789  
 Ion Ratio Lower Upper  
 83 100  
 85 64.7 45.3 84.1  
 127 9.3 7.4 11.2

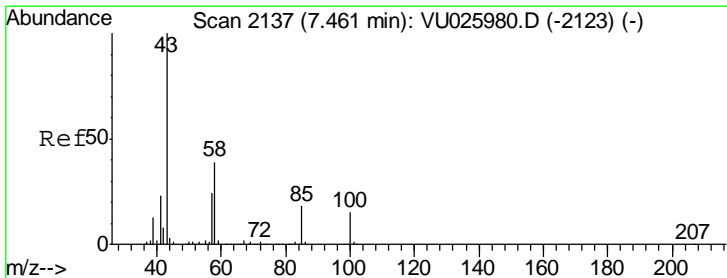
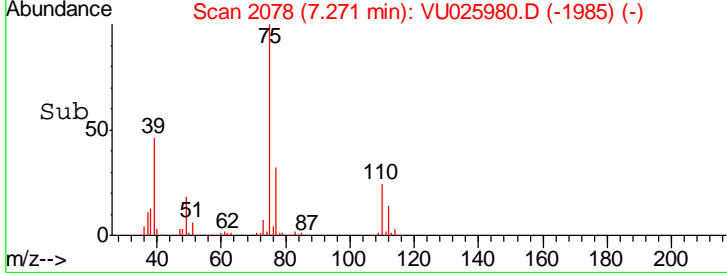
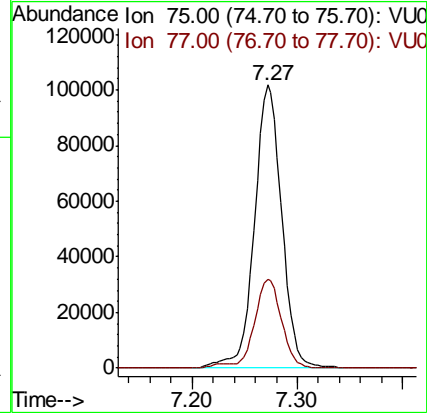
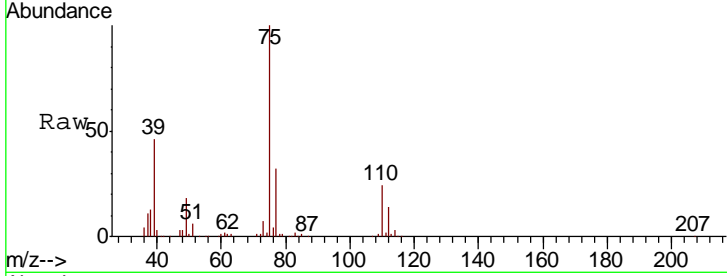




#39  
 cis-1,3-Dichloropropene  
 Concen: 54.598 ug/L  
 RT: 7.27 min Scan# 2078  
 Delta R.T. 0.00 min  
 Lab File: VU025980.D  
 Acq: 08 Aug 2018 20:06

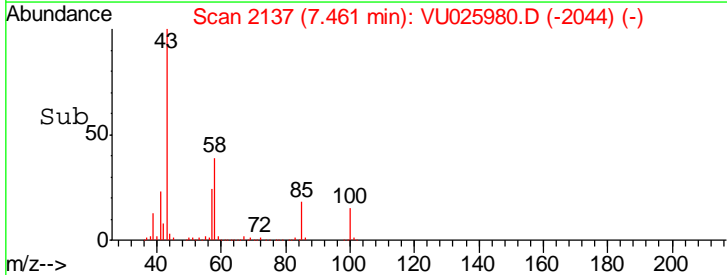
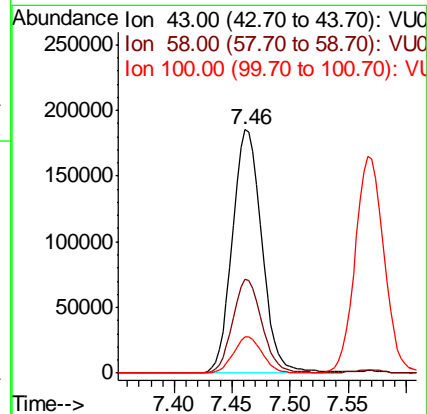
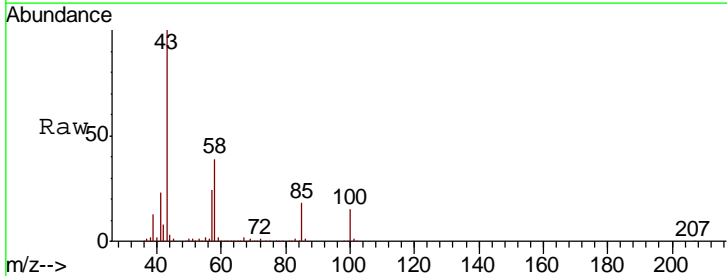
Instrument :  
 MSVOA\_U  
 ClientSampled :  
 VSTD05044

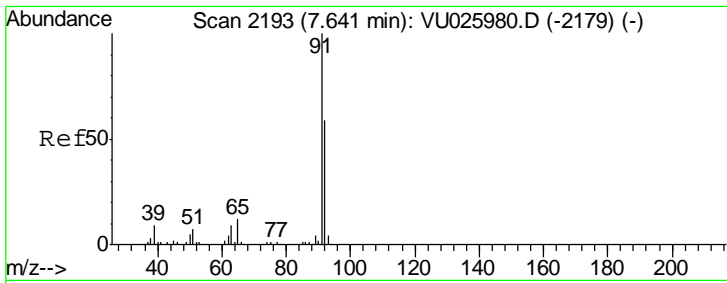
Tgt Ion: 75 Resp: 183841  
 Ion Ratio Lower Upper  
 75 100  
 77 31.6 22.1 41.1



#40  
 4-Methyl-2-pentanone  
 Concen: 114.398 ug/L  
 RT: 7.46 min Scan# 2137  
 Delta R.T. 0.00 min  
 Lab File: VU025980.D  
 Acq: 08 Aug 2018 20:06

Tgt Ion: 43 Resp: 325984  
 Ion Ratio Lower Upper  
 43 100  
 58 38.3 30.6 46.0  
 100 14.7 11.8 17.6

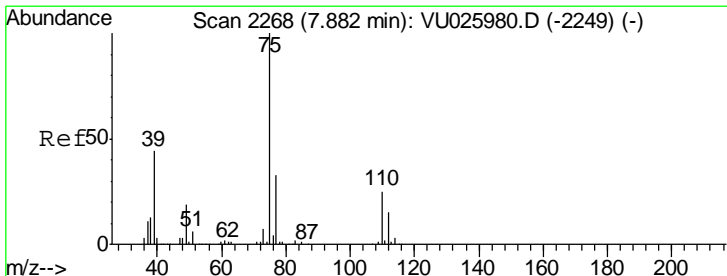
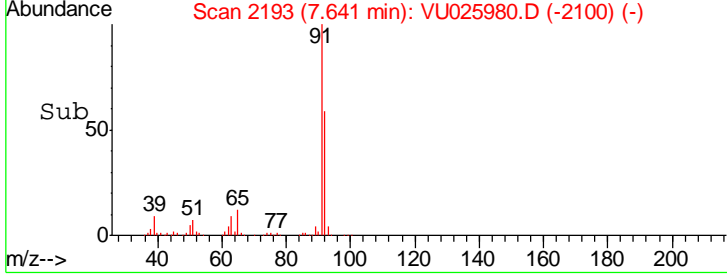
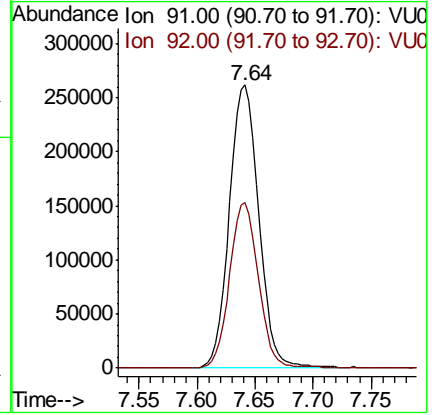
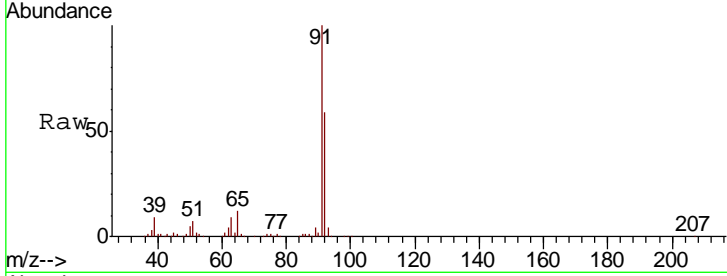




#42  
 Toluene  
 Concen: 54.608 ug/L  
 RT: 7.64 min Scan# 2193  
 Delta R.T. 0.00 min  
 Lab File: VU025980.D  
 Acq: 08 Aug 2018 20:06

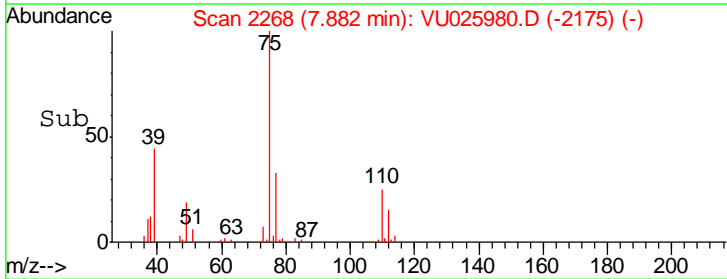
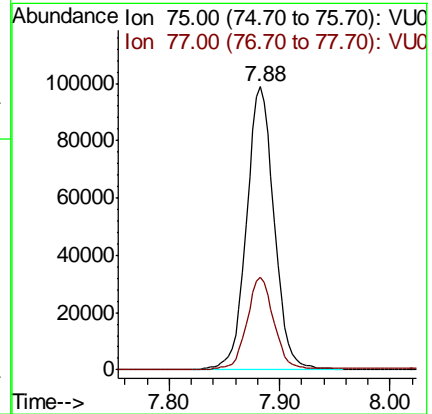
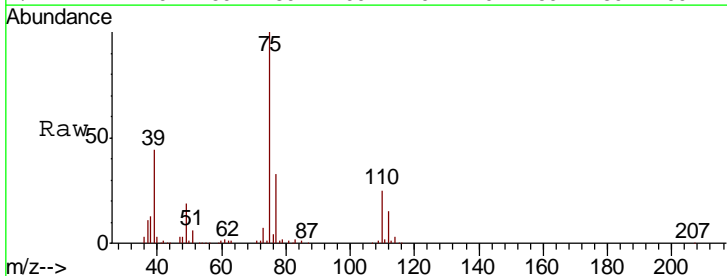
Instrument :  
 MSVOA\_U  
 ClientSampled :  
 VSTD05044

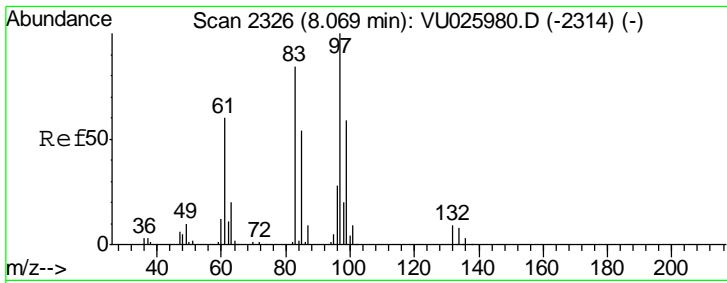
Tgt Ion: 91 Resp: 461794  
 Ion Ratio Lower Upper  
 91 100  
 92 58.6 41.0 76.2



#44  
 trans-1,3-Dichloropropene  
 Concen: 54.159 ug/L  
 RT: 7.88 min Scan# 2268  
 Delta R.T. 0.00 min  
 Lab File: VU025980.D  
 Acq: 08 Aug 2018 20:06

Tgt Ion: 75 Resp: 171244  
 Ion Ratio Lower Upper  
 75 100  
 77 32.8 23.0 42.6

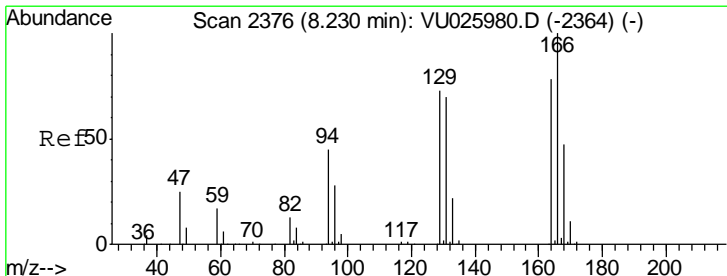
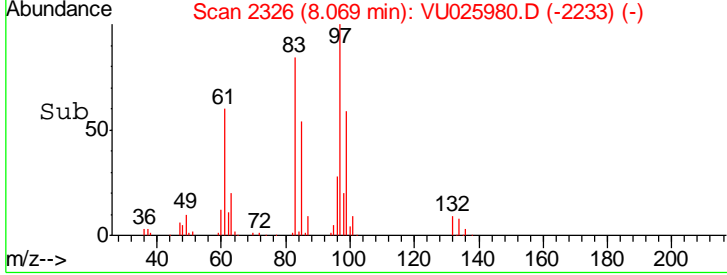
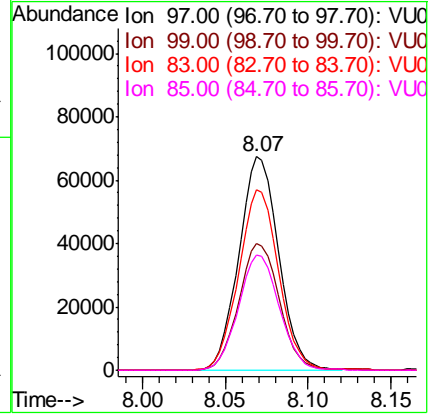
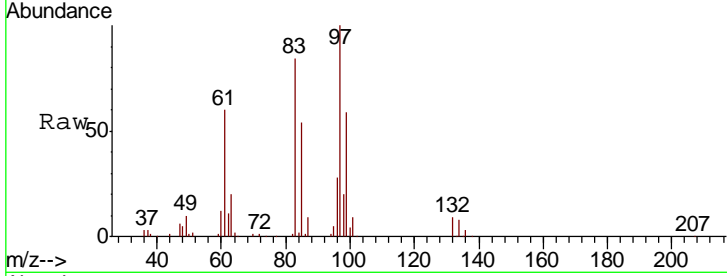




#45  
 1,1,2-Trichloroethane  
 Concen: 56.438 ug/L  
 RT: 8.07 min Scan# 2326  
 Delta R.T. 0.00 min  
 Lab File: VU025980.D  
 Acq: 08 Aug 2018 20:06

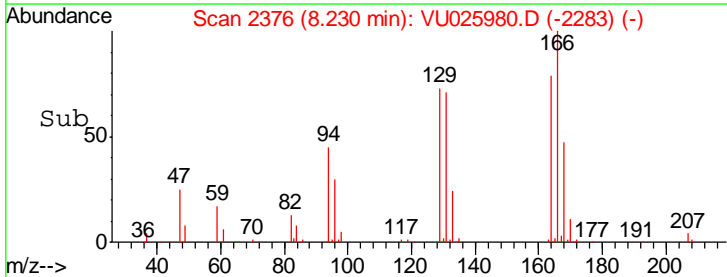
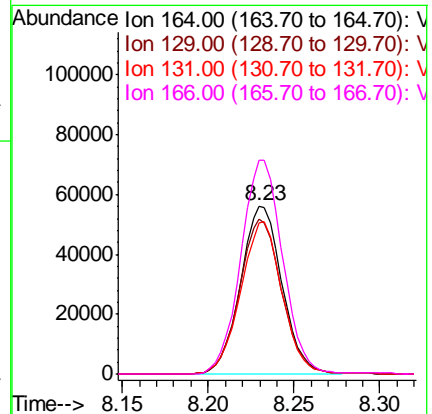
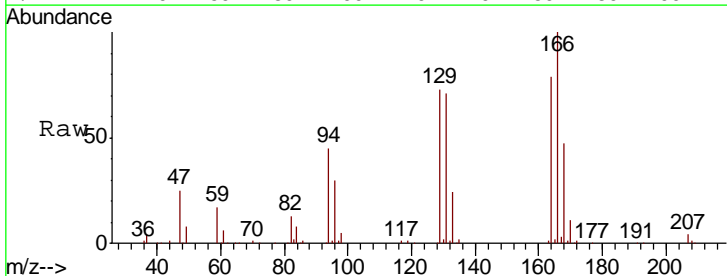
Instrument : MSVOA\_U  
 ClientSampleId : VSTD05044

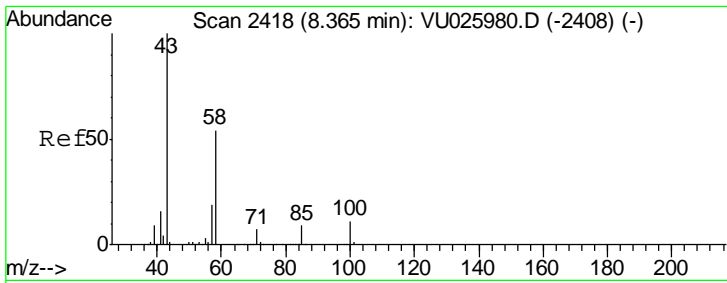
Tgt Ion	Resp	Lower	Upper
97	112737		
99	59.4	41.6	77.2
83	84.3	59.0	109.6
85	54.2	37.9	70.5



#46  
 Tetrachloroethene  
 Concen: 51.017 ug/L  
 RT: 8.23 min Scan# 2376  
 Delta R.T. 0.00 min  
 Lab File: VU025980.D  
 Acq: 08 Aug 2018 20:06

Tgt Ion	Resp	Lower	Upper
164	93400		
129	92.5	64.8	120.3
131	89.7	62.8	116.6
166	127.2	89.0	165.4



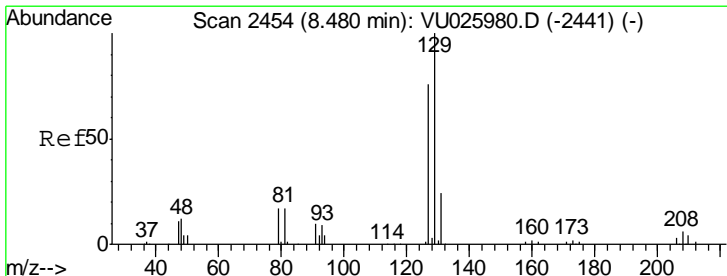
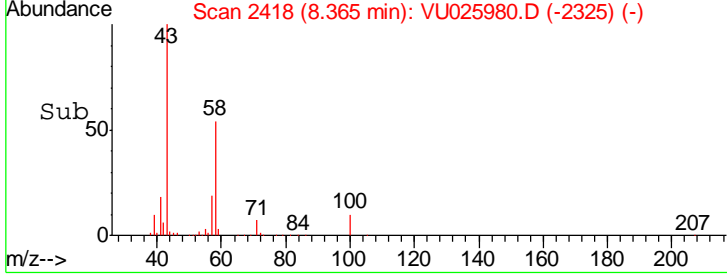
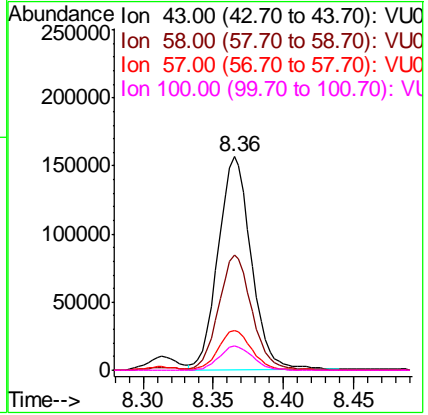
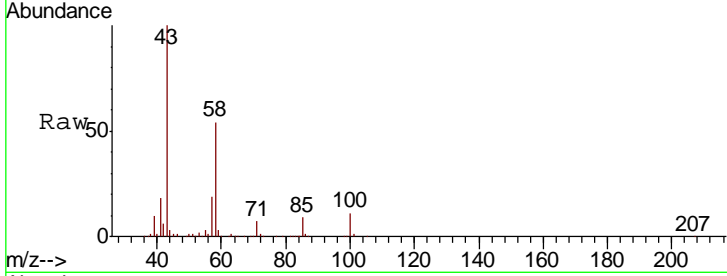


#48  
 2-Hexanone  
 Concen: 111.330 ug/L  
 RT: 8.36 min Scan# 2418  
 Delta R.T. 0.00 min  
 Lab File: VU025980.D  
 Acq: 08 Aug 2018 20:06

Instrument : MSVOA\_U  
 ClientSampled : VSTD05044

Tgt Ion: 43 Resp: 253891

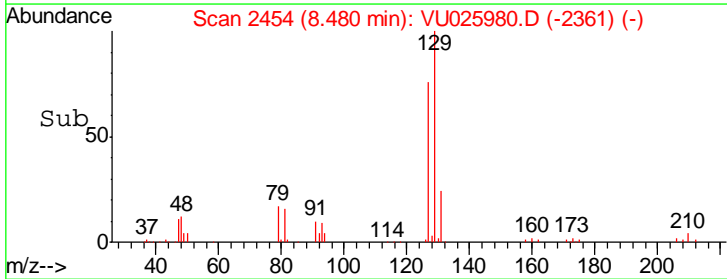
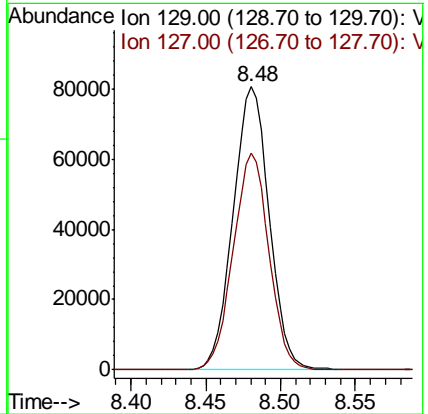
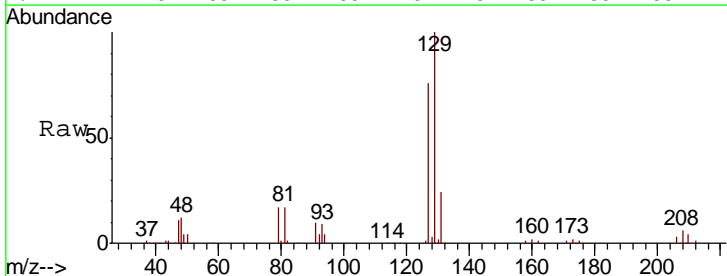
Ion	Ratio	Lower	Upper
43	100		
58	54.5	43.6	65.4
57	18.9	15.1	22.7
100	11.6	9.3	13.9

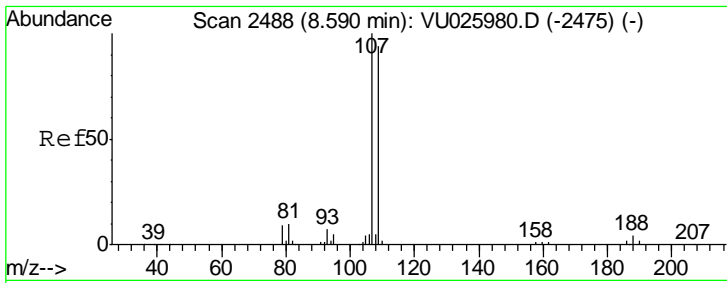


#49  
 Dibromochloromethane  
 Concen: 55.731 ug/L  
 RT: 8.48 min Scan# 2454  
 Delta R.T. 0.00 min  
 Lab File: VU025980.D  
 Acq: 08 Aug 2018 20:06

Tgt Ion: 129 Resp: 135777

Ion	Ratio	Lower	Upper
129	100		
127	76.4	53.5	99.3

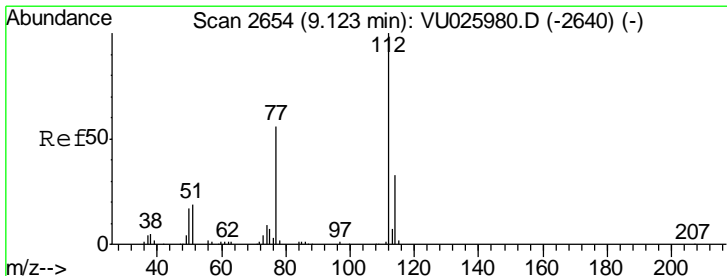
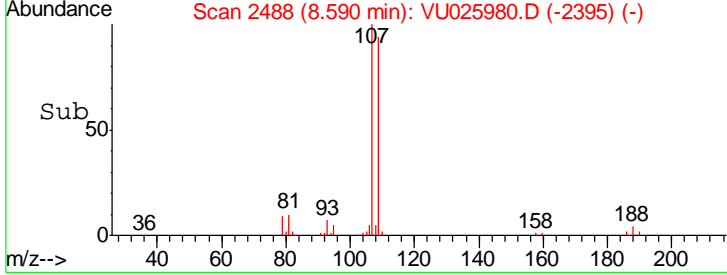
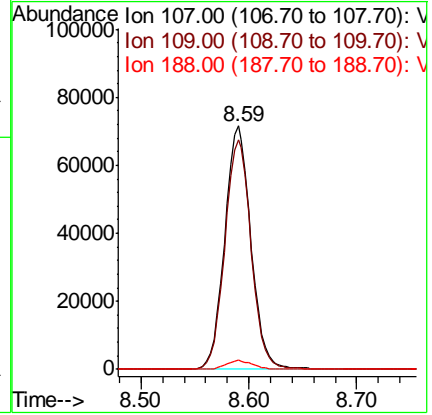
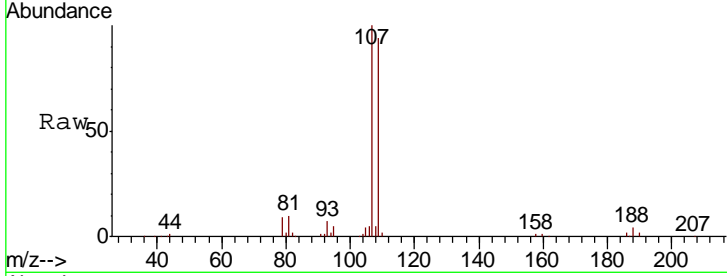




#50  
 1,2-Dibromoethane  
 Concen: 54.445 ug/L  
 RT: 8.59 min Scan# 2488  
 Delta R.T. 0.00 min  
 Lab File: VU025980.D  
 Acq: 08 Aug 2018 20:06

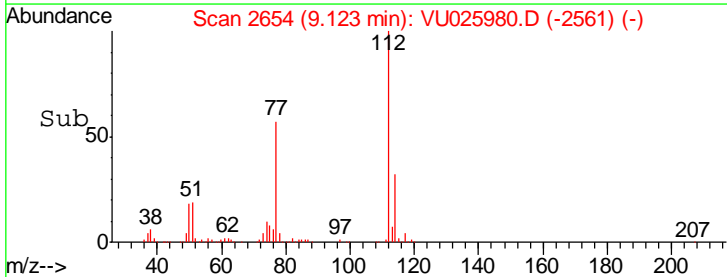
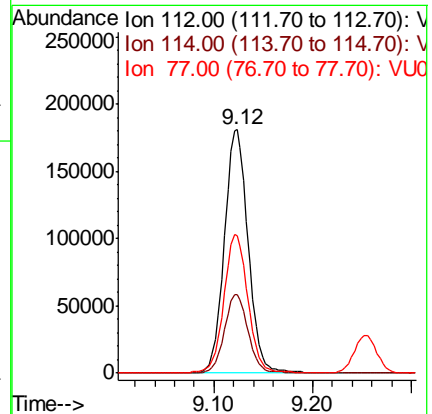
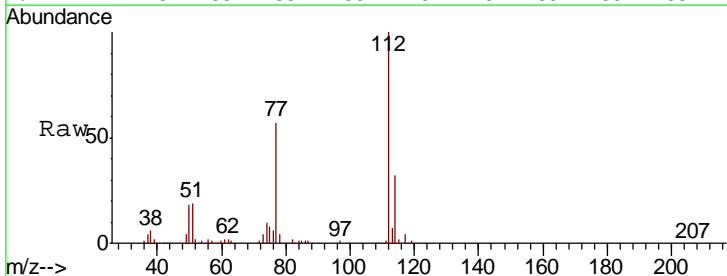
Instrument :  
 MSVOA\_U  
 ClientSampled :  
 VSTD05044

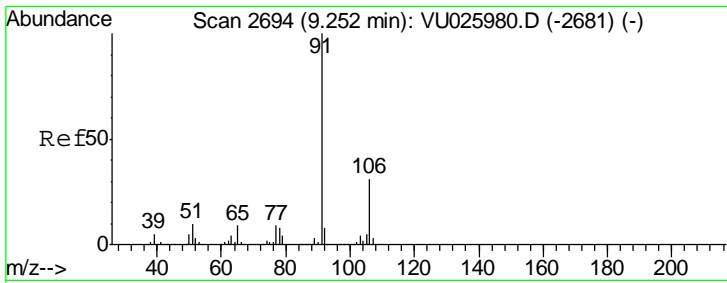
Tgt Ion	Resp	Lower	Upper
107	120561		
109	94.4	66.1	122.7
188	3.6	2.9	4.3



#51  
 Chlorobenzene  
 Concen: 53.227 ug/L  
 RT: 9.12 min Scan# 2654  
 Delta R.T. 0.00 min  
 Lab File: VU025980.D  
 Acq: 08 Aug 2018 20:06

Tgt Ion	Resp	Lower	Upper
112	306871		
114	32.5	22.7	42.3
77	56.5	45.2	67.8

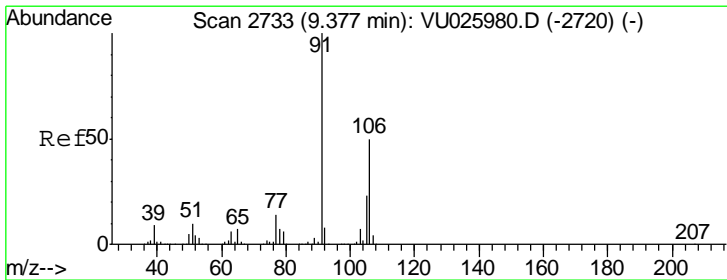
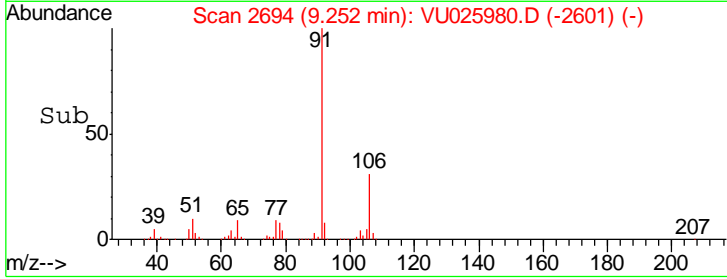
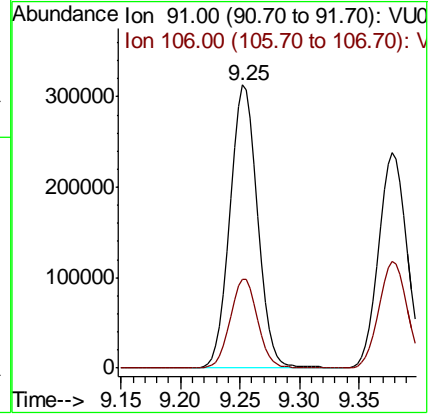
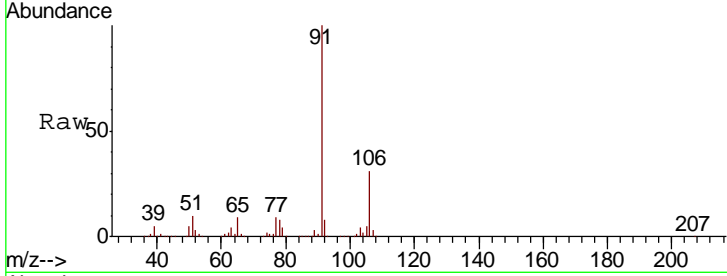




#52  
 Ethylbenzene  
 Concen: 52.905 ug/L  
 RT: 9.25 min Scan# 2694  
 Delta R.T. 0.00 min  
 Lab File: VU025980.D  
 Acq: 08 Aug 2018 20:06

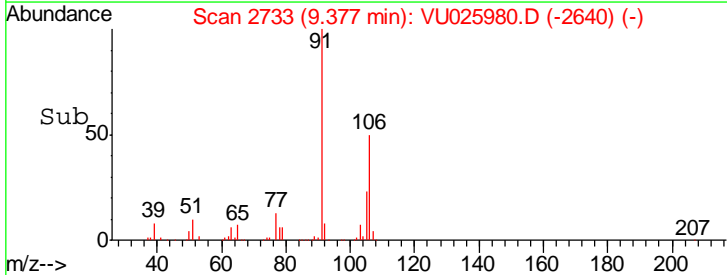
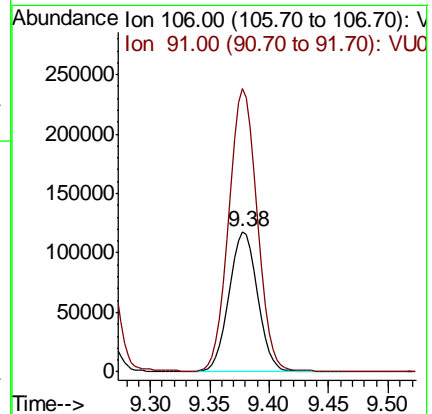
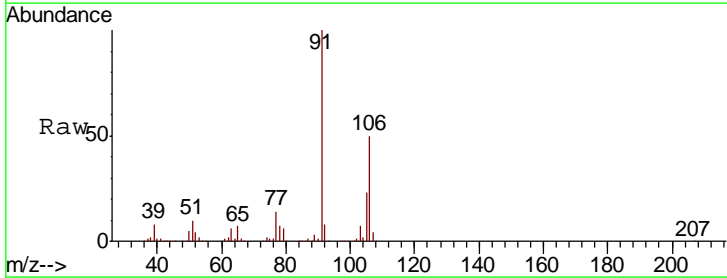
Instrument :  
 MSVOA\_U  
 ClientSampled :  
 VSTD05044

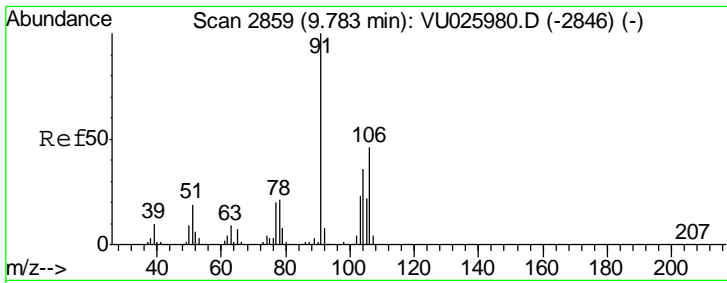
Tgt Ion: 91 Resp: 504488  
 Ion Ratio Lower Upper  
 91 100  
 106 31.5 22.0 41.0



#53  
 m,p-Xylene  
 Concen: 52.435 ug/L  
 RT: 9.38 min Scan# 2733  
 Delta R.T. 0.00 min  
 Lab File: VU025980.D  
 Acq: 08 Aug 2018 20:06

Tgt Ion: 106 Resp: 196322  
 Ion Ratio Lower Upper  
 106 100  
 91 201.9 141.3 262.5

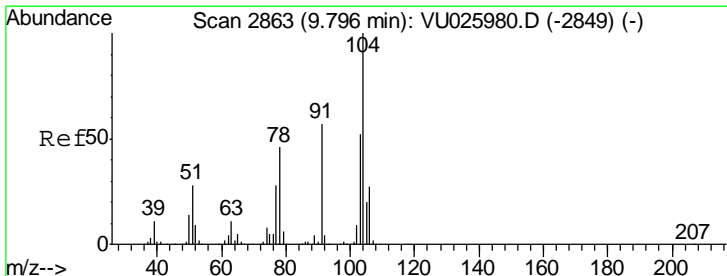
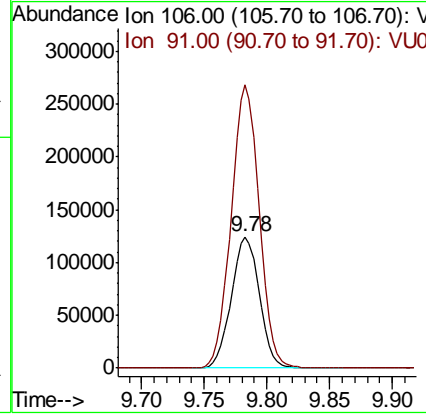
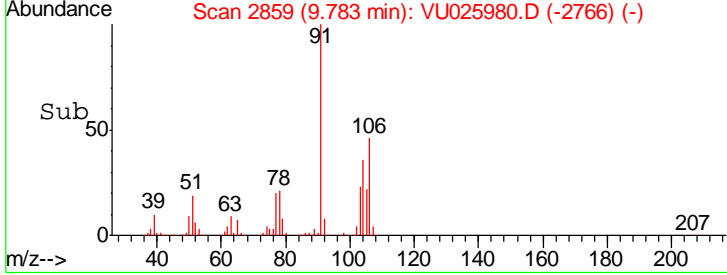
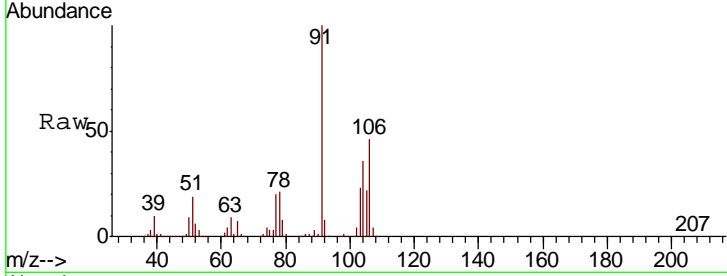




#54  
 o-xylene  
 Concen: 54.039 ug/L  
 RT: 9.78 min Scan# 2859  
 Delta R.T. 0.00 min  
 Lab File: VU025980.D  
 Acq: 08 Aug 2018 20:06

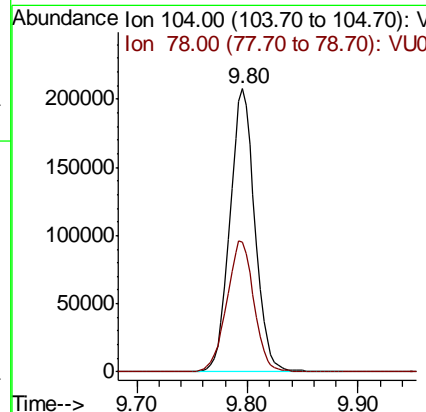
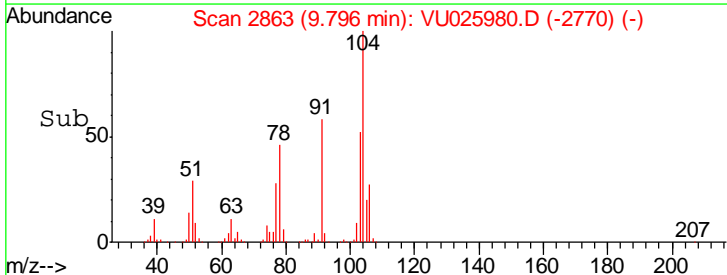
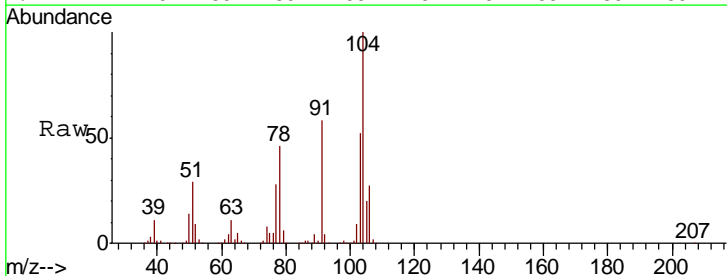
Instrument : MSVOA\_U  
 ClientSampled : VSTD05044

Tgt Ion:106 Resp: 193106  
 Ion Ratio Lower Upper  
 106 100  
 91 216.0 151.2 280.8

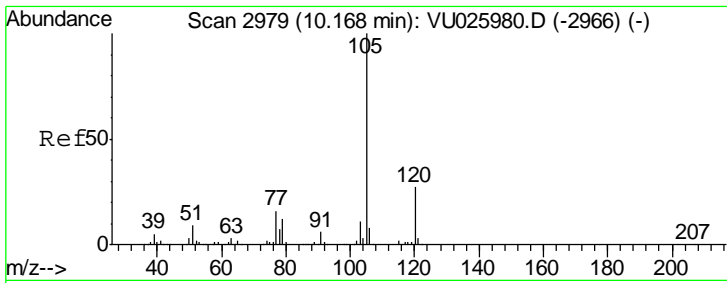


#55  
 Styrene  
 Concen: 54.306 ug/L  
 RT: 9.80 min Scan# 2863  
 Delta R.T. 0.00 min  
 Lab File: VU025980.D  
 Acq: 08 Aug 2018 20:06

Tgt Ion:104 Resp: 326301  
 Ion Ratio Lower Upper  
 104 100  
 78 45.8 32.1 59.5



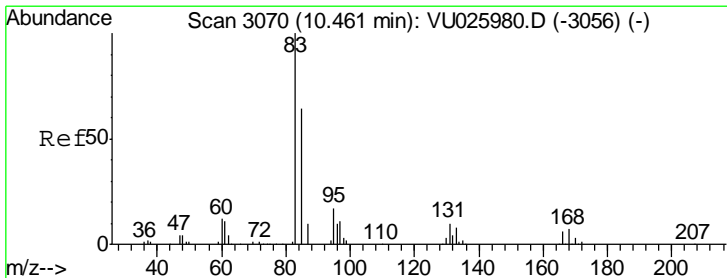
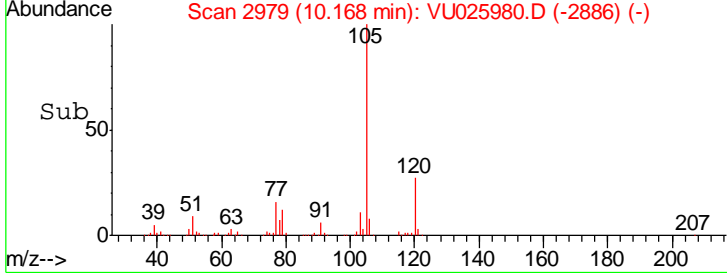
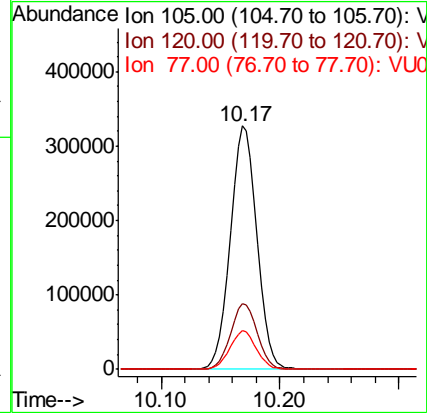
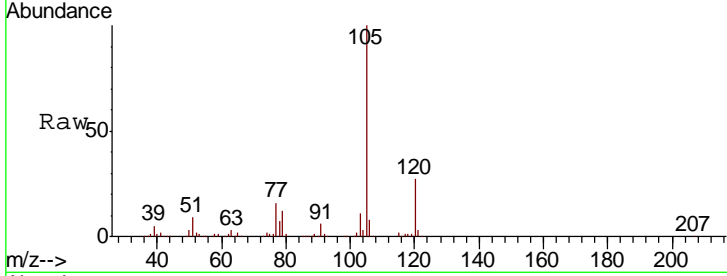




#56  
 Isopropylbenzene  
 Concen: 53.111 ug/L  
 RT: 10.17 min Scan# 2979  
 Delta R.T. 0.00 min  
 Lab File: VU025980.D  
 Acq: 08 Aug 2018 20:06

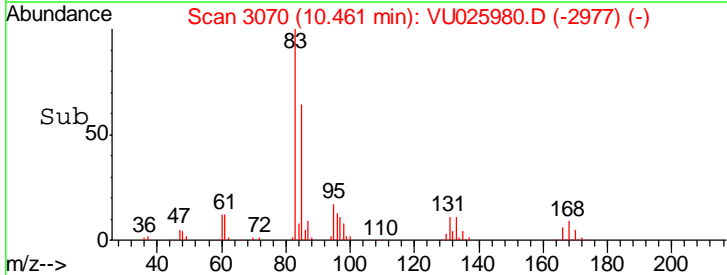
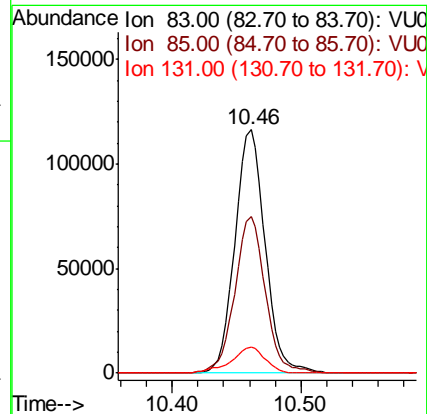
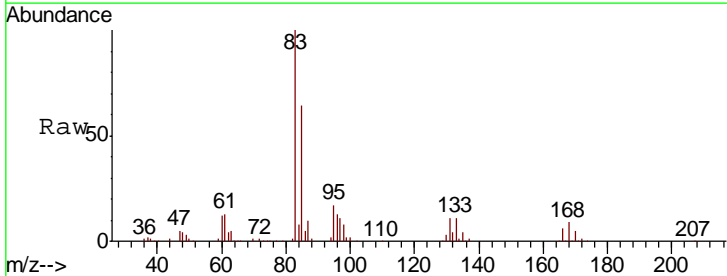
Instrument :  
 MSVOA\_U  
 ClientSampled :  
 VSTD05044

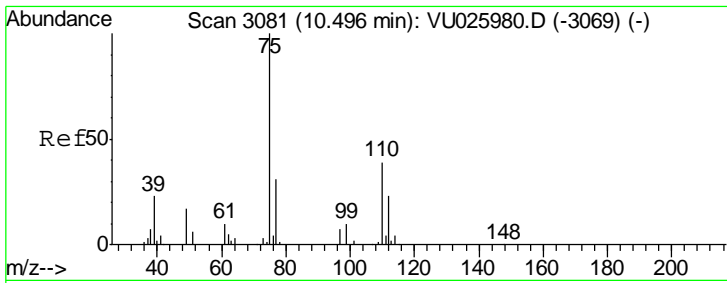
Tgt Ion	Resp	Lower	Upper
105	100		
120	27.1	21.7	32.5
77	15.7	12.6	18.8



#58  
 1,1,2,2-Tetrachloroethane  
 Concen: 56.215 ug/L  
 RT: 10.46 min Scan# 3070  
 Delta R.T. 0.00 min  
 Lab File: VU025980.D  
 Acq: 08 Aug 2018 20:06

Tgt Ion	Resp	Lower	Upper
83	100		
85	64.3	45.0	83.6
131	10.7	8.6	12.8

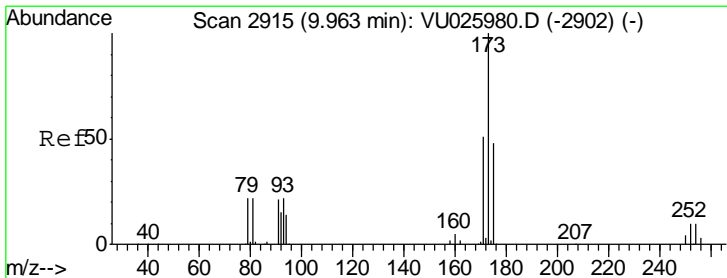
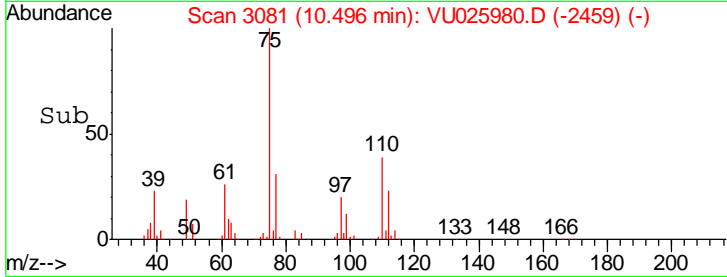
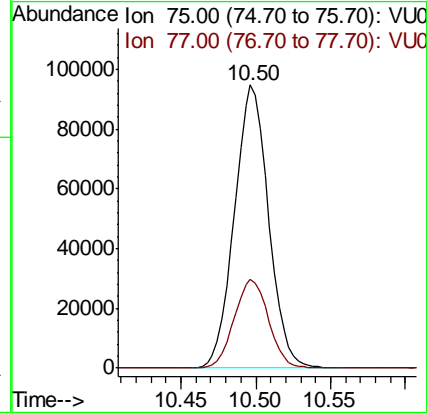
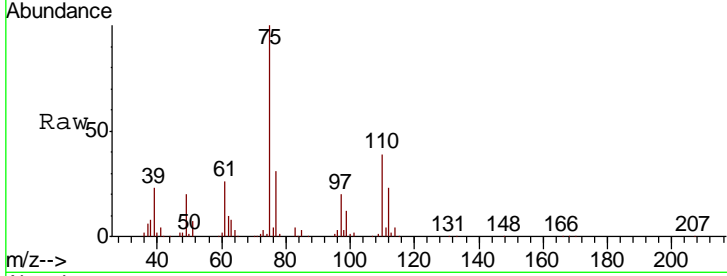




#59  
 1,2,3-Trichloropropane  
 Concen: 56.656 ug/L  
 RT: 10.50 min Scan# 3081  
 Delta R.T. 0.00 min  
 Lab File: VU025980.D  
 Acq: 08 Aug 2018 20:06

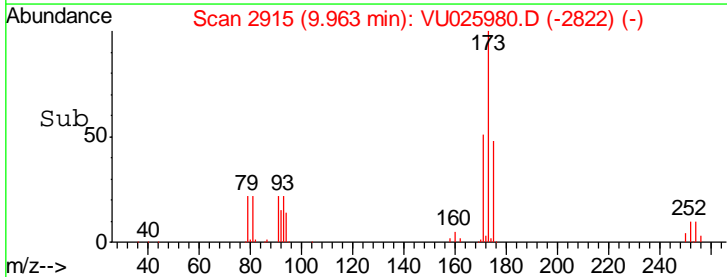
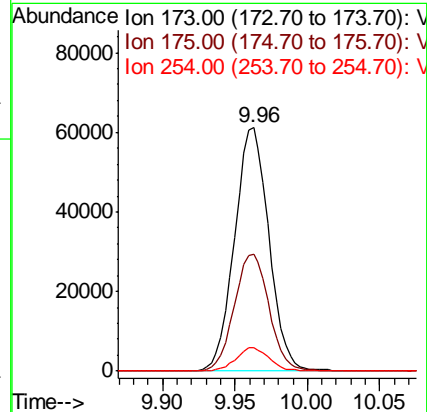
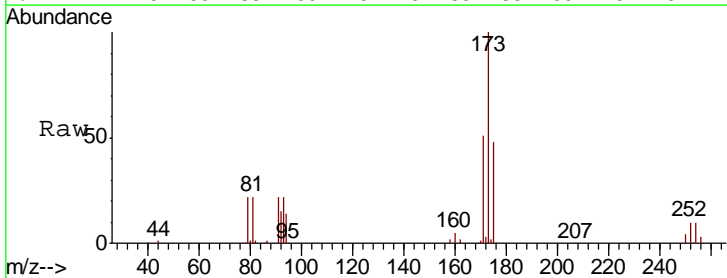
Instrument :  
 MSVOA\_U  
 ClientSampled :  
 VSTD05044

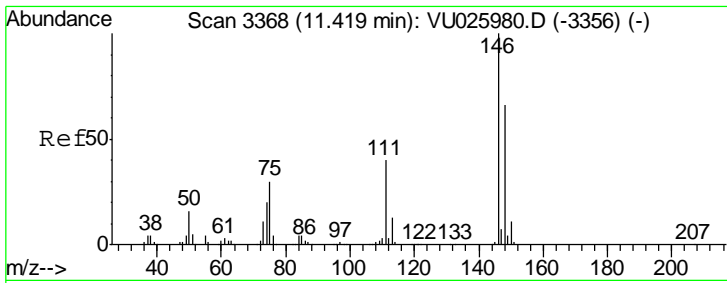
Tgt Ion: 75 Resp: 150291  
 Ion Ratio Lower Upper  
 75 100  
 77 31.6 25.3 37.9



#61  
 Bromoform  
 Concen: 57.926 ug/L  
 RT: 9.96 min Scan# 2915  
 Delta R.T. 0.00 min  
 Lab File: VU025980.D  
 Acq: 08 Aug 2018 20:06

Tgt Ion: 173 Resp: 100488  
 Ion Ratio Lower Upper  
 173 100  
 175 48.6 38.9 58.3  
 254 9.2 7.4 11.0

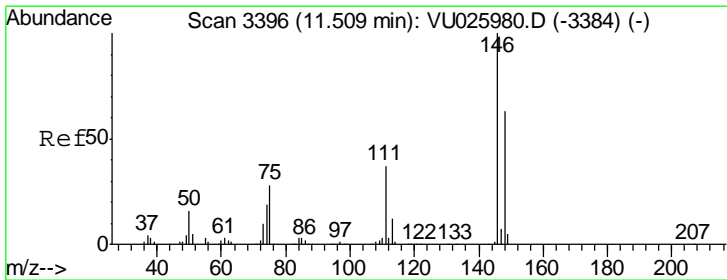
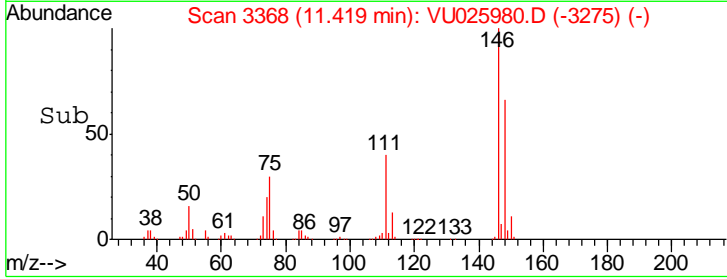
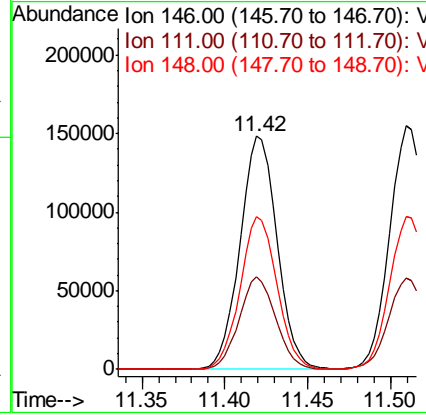
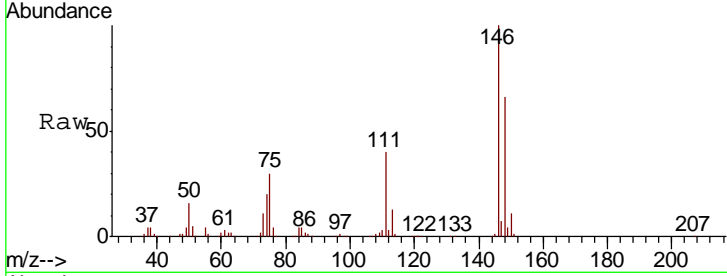




#62  
 1,3-Dichlorobenzene  
 Concen: 52.112 ug/L  
 RT: 11.42 min Scan# 3368  
 Delta R.T. 0.00 min  
 Lab File: VU025980.D  
 Acq: 08 Aug 2018 20:06

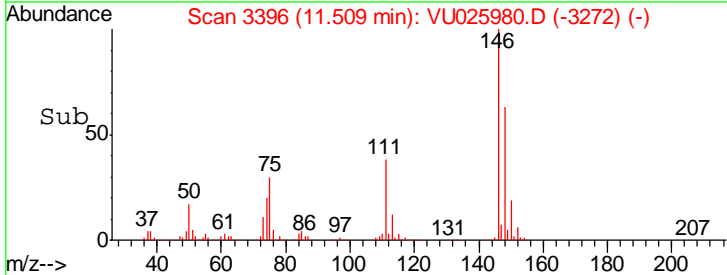
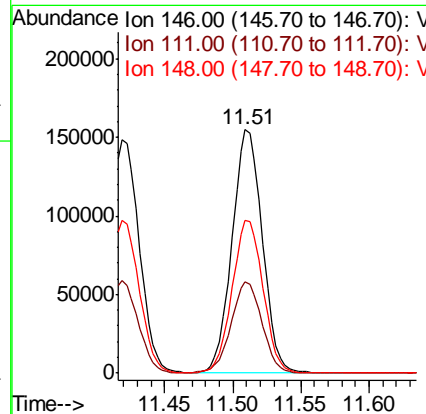
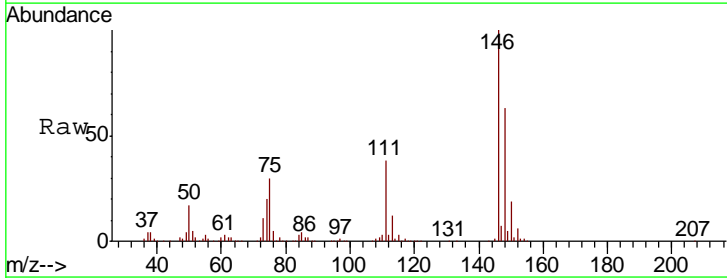
Instrument :  
 MSVOA\_U  
 ClientSampled :  
 VSTD05044

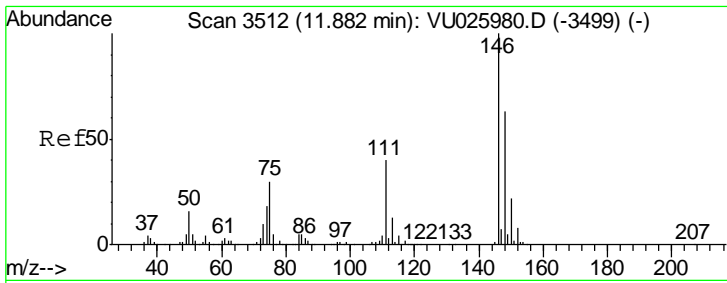
Tgt Ion	Resp	Lower	Upper
146	231199		
111	39.9	27.9	51.9
148	65.7	46.0	85.4



#63  
 1,4-Dichlorobenzene  
 Concen: 52.431 ug/L  
 RT: 11.51 min Scan# 3396  
 Delta R.T. 0.00 min  
 Lab File: VU025980.D  
 Acq: 08 Aug 2018 20:06

Tgt Ion	Resp	Lower	Upper
146	238243		
111	37.7	26.4	49.0
148	62.6	43.8	81.4

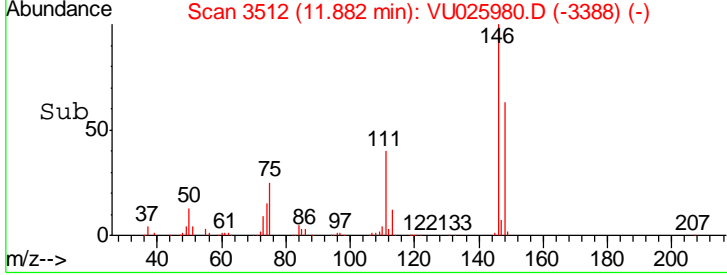
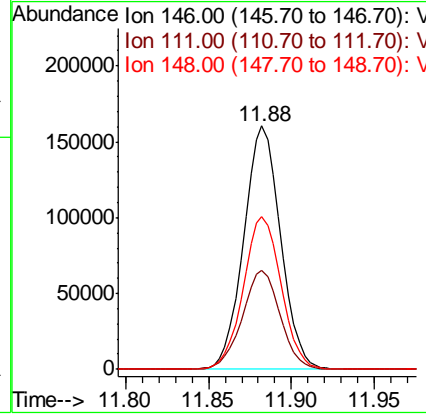
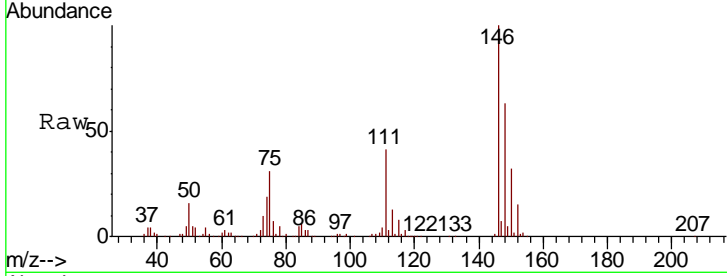




#65  
 1,2-Dichlorobenzene  
 Concen: 54.851 ug/L  
 RT: 11.88 min Scan# 3512  
 Delta R.T. 0.00 min  
 Lab File: VU025980.D  
 Acq: 08 Aug 2018 20:06

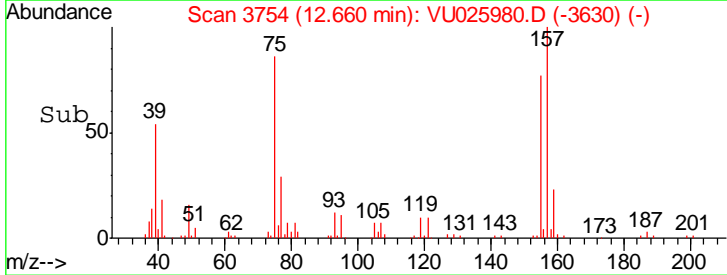
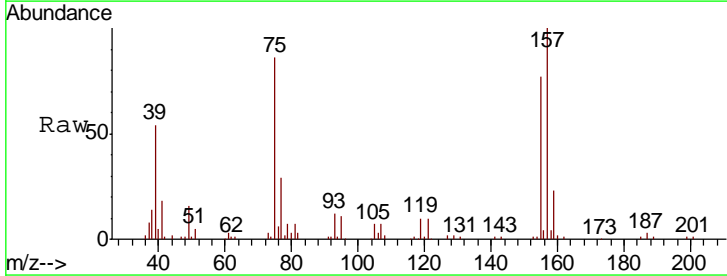
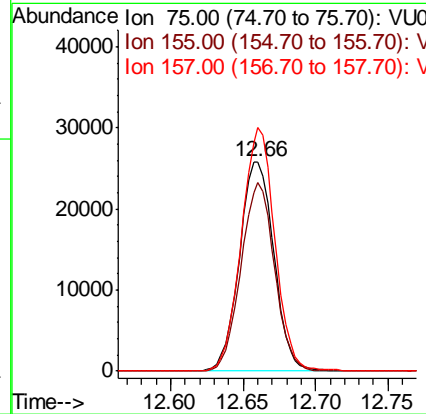
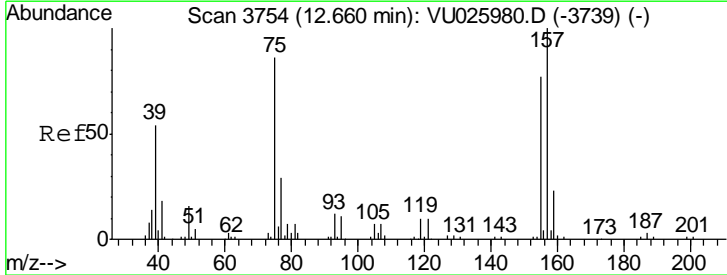
Instrument :  
 MSVOA\_U  
 ClientSampled :  
 VSTD05044

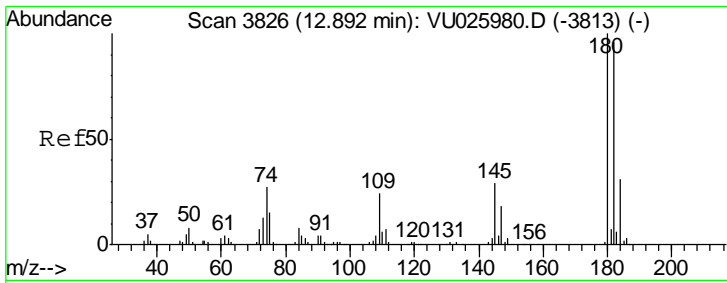
Tgt Ion	Resp	Lower	Upper
146	100		
111	40.5	32.4	48.6
148	62.6	50.1	75.1



#66  
 1,2-Dibromo-3-chloropropane  
 Concen: 60.834 ug/L  
 RT: 12.66 min Scan# 3754  
 Delta R.T. 0.00 min  
 Lab File: VU025980.D  
 Acq: 08 Aug 2018 20:06

Tgt Ion	Resp	Lower	Upper
75	100		
155	89.8	71.8	107.8
157	116.3	93.0	139.6

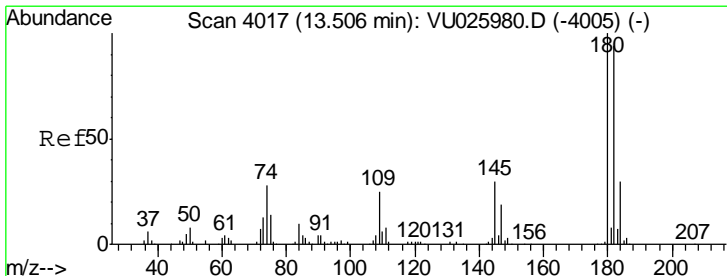
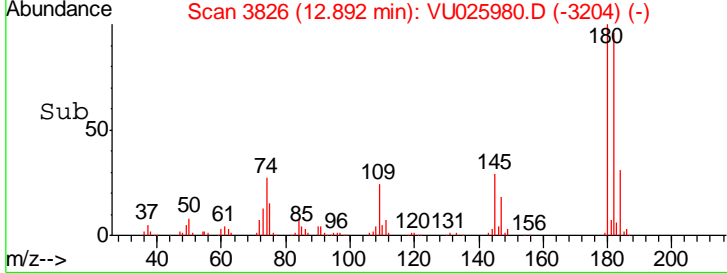
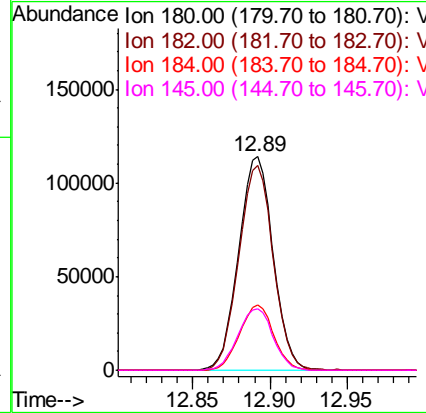
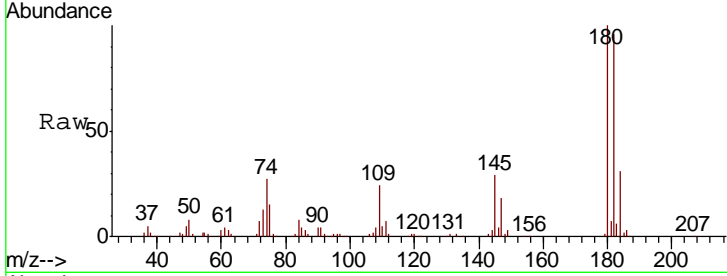




#67  
 1,3,5-Trichlorobenzene  
 Concen: 53.661 ug/L  
 RT: 12.89 min Scan# 3826  
 Delta R.T. 0.00 min  
 Lab File: VU025980.D  
 Acq: 08 Aug 2018 20:06

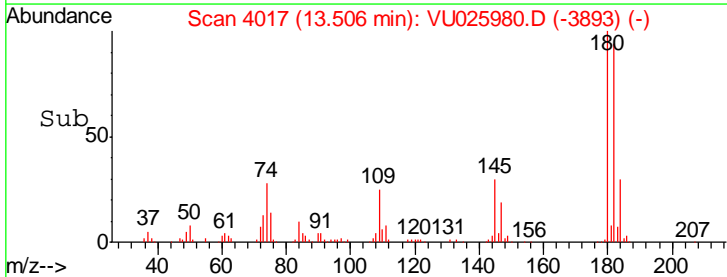
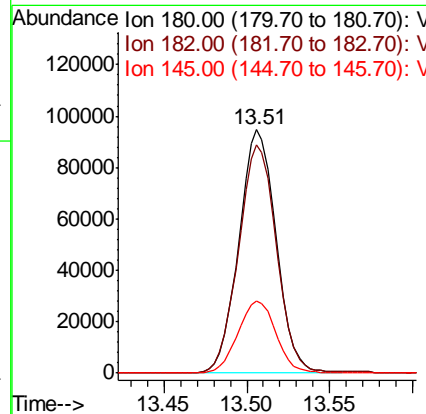
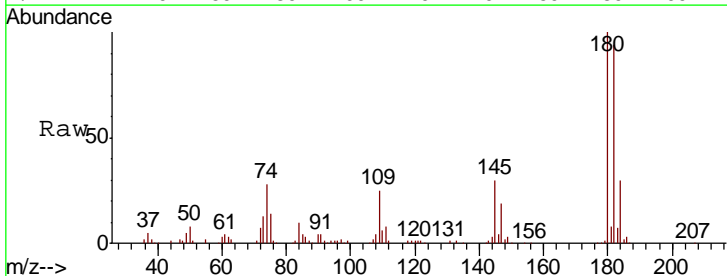
Instrument : MSVOA\_U  
 ClientSampled : VSTD05044

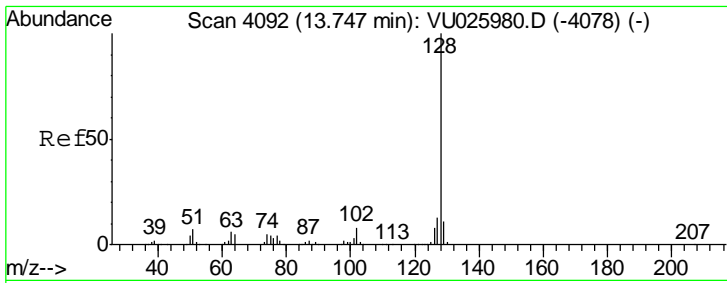
Tgt Ion	Resp	Lower	Upper
180	176338		
182	95.6	76.5	114.7
184	30.4	24.3	36.5
145	29.4	23.5	35.3



#68  
 1,2,4-trichlorobenzene  
 Concen: 52.631 ug/L  
 RT: 13.51 min Scan# 4017  
 Delta R.T. 0.00 min  
 Lab File: VU025980.D  
 Acq: 08 Aug 2018 20:06

Tgt Ion	Resp	Lower	Upper
180	147990		
182	95.6	76.5	114.7
145	30.3	24.2	36.4

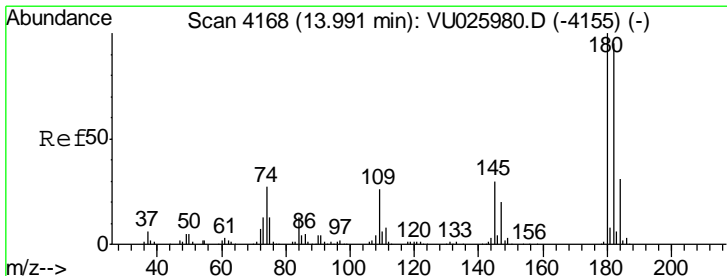
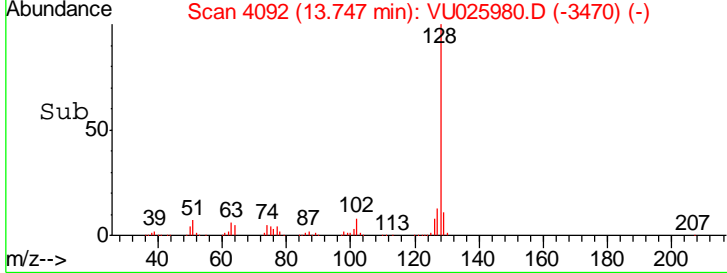
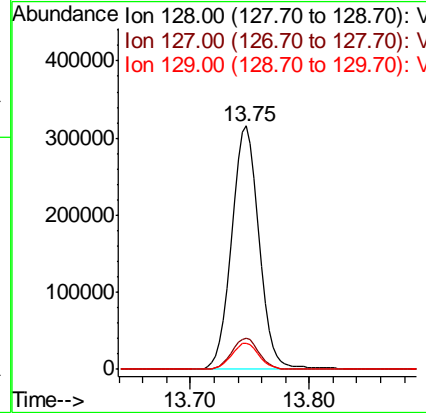
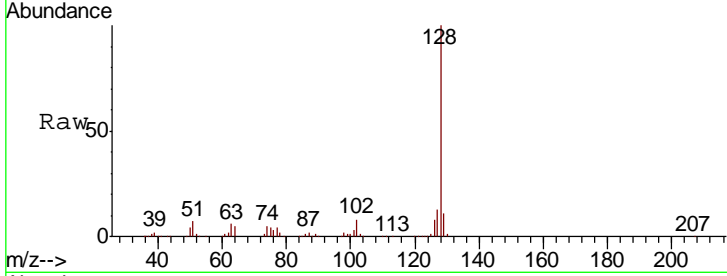




#69  
 Naphthalene  
 Concen: 59.282 ug/L  
 RT: 13.75 min Scan# 4092  
 Delta R.T. 0.00 min  
 Lab File: VU025980.D  
 Acq: 08 Aug 2018 20:06

Instrument :  
 MSVOA\_U  
 ClientSampled :  
 VSTD05044

Tgt Ion	Resp	Lower	Upper
128	504188		
127	12.9	10.3	15.5
129	10.8	8.6	13.0



#70  
 1,2,3-Trichlorobenzene  
 Concen: 55.688 ug/L  
 RT: 13.99 min Scan# 4168  
 Delta R.T. 0.00 min  
 Lab File: VU025980.D  
 Acq: 08 Aug 2018 20:06

Tgt Ion	Resp	Lower	Upper
180	163758		
182	95.6	76.5	114.7
145	30.9	24.7	37.1

