

Data Path : Z:\voasrv\HPCHEM1\MSVOA\_U\Data\VU080924\  
 Data File : VU060372.D  
 Acq On : 09 Aug 2024 13:08  
 Operator : MD/SY  
 Sample : P3401-04MS  
 Misc : 25.0mL/MSVOA\_U/WATER  
 ALS Vial : 8 Sample Multiplier: 1

Quant Time: Aug 10 04:53:45 2024  
 Quant Method : Z:\voasrv\HPCHEM1\MSVOA\_U\Method\SFAMUTR080824WMA.M  
 Quant Title : TRACE VOA SFAM1.0  
 QLast Update : Sat Aug 10 04:43:24 2024  
 Response via : Initial Calibration

Compound	R.T.	QI on	Response	Conc	Units	Dev(Min)
<b>Internal Standards</b>						
1) 1,4-Difluorobenzene	6.242	114	109461	5.000	ug/L	0.00
28) Chlorobenzene-d5	9.412	117	113225	5.000	ug/L	0.00
58) 1,4-Dichlorobenzene-d4	11.808	152	55559	5.000	ug/L	0.00
<b>System Monitoring Compounds</b>						
4) Vinyl chloride-d3	1.596	65	39286	4.572	ug/L	0.00
Spike Amount	5.000	Range	40 - 130	Recovery	=	91.400%
7) Chloroethane-d5	1.908	69	36258	4.680	ug/L	0.00
Spike Amount	5.000	Range	65 - 130	Recovery	=	93.600%
11) 1,1-Dichloroethene-d2	2.560	65	16285	4.453	ug/L	0.00
Spike Amount	5.000	Range	60 - 125	Recovery	=	89.000%
20) 2-Butanone-d5	4.631	46	104990	57.577	ug/L	0.00
Spike Amount	50.000	Range	40 - 130	Recovery	=	115.160%
24) Chloroform-d	5.055	84	81857	4.811	ug/L	0.00
Spike Amount	5.000	Range	70 - 125	Recovery	=	96.200%
26) 1,2-Dichloroethane-d4	5.695	65	38844	4.924	ug/L	0.00
Spike Amount	5.000	Range	70 - 130	Recovery	=	98.400%
32) Benzene-d6	5.721	84	160301	4.695	ug/L	0.00
Spike Amount	5.000	Range	70 - 125	Recovery	=	93.800%
36) 1,2-Dichloropropane-d6	6.682	67	53555	5.056	ug/L	0.00
Spike Amount	5.000	Range	60 - 140	Recovery	=	101.200%
41) Toluene-d8	7.891	98	145146	4.761	ug/L	0.00
Spike Amount	5.000	Range	70 - 130	Recovery	=	95.200%
43) trans-1,3-Dichloropropene	8.174	79	15479	4.521	ug/L	0.00
Spike Amount	5.000	Range	55 - 130	Recovery	=	90.400%
46) 2-Hexanone-d5	8.628	63	76850	50.573	ug/L	0.00
Spike Amount	50.000	Range	45 - 130	Recovery	=	101.140%
56) 1,1,2,2-Tetrachloroethane	10.750	84	43463	5.001	ug/L	0.00
Spike Amount	5.000	Range	65 - 120	Recovery	=	100.000%
66) 1,2-Dichlorobenzene-d4	12.187	152	50134	4.898	ug/L	0.00
Spike Amount	5.000	Range	80 - 120	Recovery	=	98.000%
<b>Target Compounds</b>						
2) Dichlorodifluoromethane	1.384	85	27946	4.733	ug/L	96
3) Chloromethane	1.519	50	40265	5.482	ug/L	98
5) Vinyl chloride	1.599	62	139004	16.165	ug/L	96
6) Bromomethane	1.853	94	28502	4.681	ug/L	98
8) Chloroethane	1.930	64	30137	5.167	ug/L	100
9) Trichlorofluoromethane	2.130	101	59935	4.972	ug/L	100
10) 1,1,2-Trichloro-1,2,2-trifluoroethane	2.573	101	34958	4.400	ug/L	99
12) 1,1-Dichloroethene	2.573	96	41840	5.797	ug/L	85
13) Acetone	2.650	43	68987	55.403	ug/L	98
14) Carbon disulfide	2.785	76	88148	4.841	ug/L	99
15) Methyl Acetate	2.898	43	338013	131.015	ug/L #	50
16) Methylene chloride	3.036	84	46535	4.536	ug/L	97
17) Methyl tert-butyl Ether	3.355	73	98199	5.771	ug/L	97
18) trans-1,2-Dichloroethene	3.345	96	60946	8.608	ug/L	99
19) 1,1-Dichloroethane	3.859	63	80249	5.490	ug/L	98
21) 2-Butanone	4.711	43	104726	56.429	ug/L	95
22) cis-1,2-Dichloroethene	4.654	96	1607000	188.010	ug/L	95
23) Bromochloromethane	4.969	128	20256	5.135	ug/L	94
25) Chloroform	5.081	83	86484	5.439	ug/L	99

Data Path : Z:\voasrv\HPCHEM1\MSVOA\_U\Data\VU080924\  
 Data File : VU060372.D  
 Acq On : 09 Aug 2024 13:08  
 Operator : MD/SY  
 Sample : P3401-04MS  
 Misc : 25.0mL/MSVOA\_U/WATER  
 ALS Vial : 8 Sample Multiplier: 1

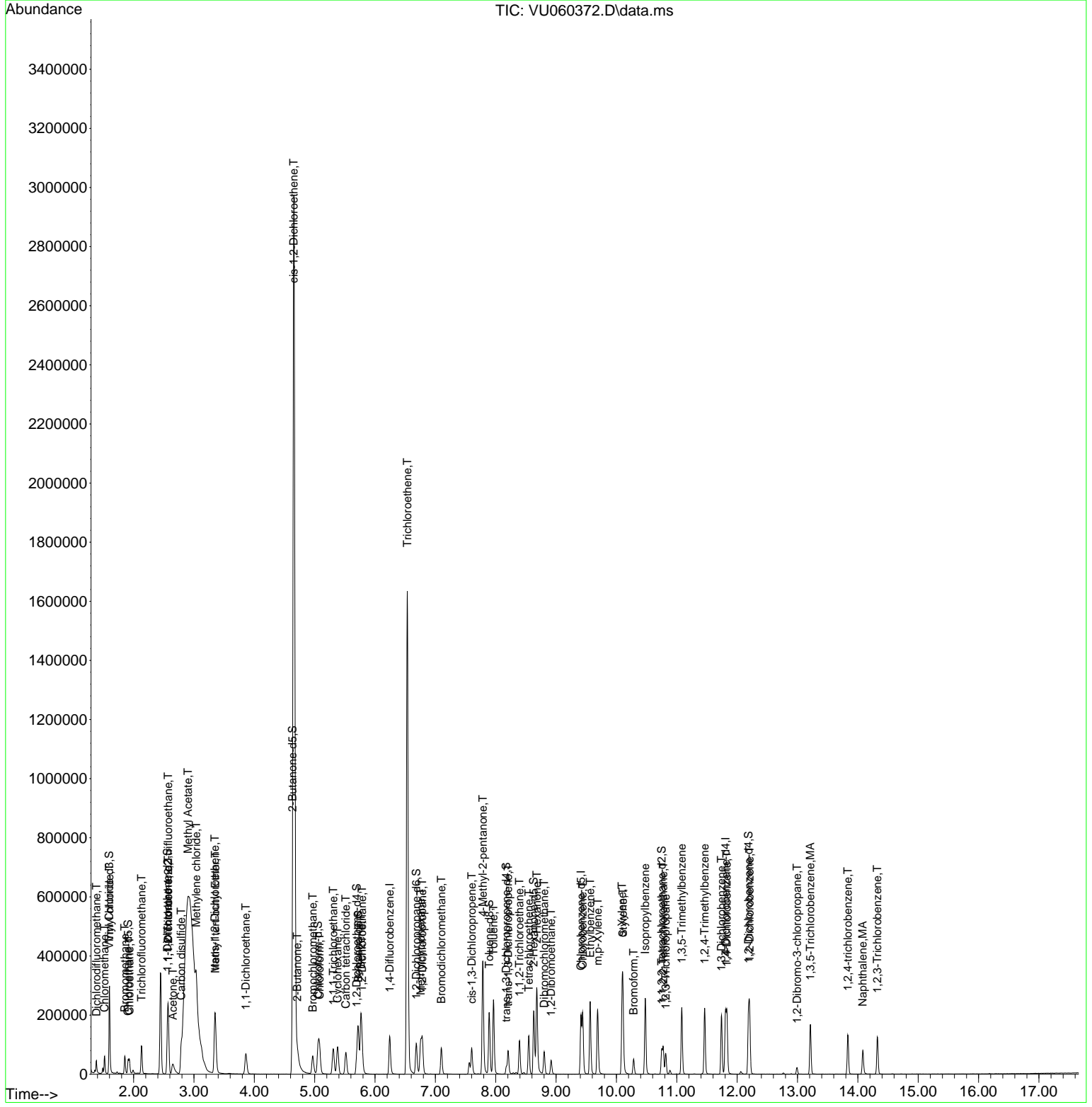
Quant Time: Aug 10 04:53:45 2024  
 Quant Method : Z:\voasrv\HPCHEM1\MSVOA\_U\Method\SFAMUTR080824WMA.M  
 Quant Title : TRACE VOA SFAM1.0  
 QLast Update : Sat Aug 10 04:43:24 2024  
 Response via : Initial Calibration

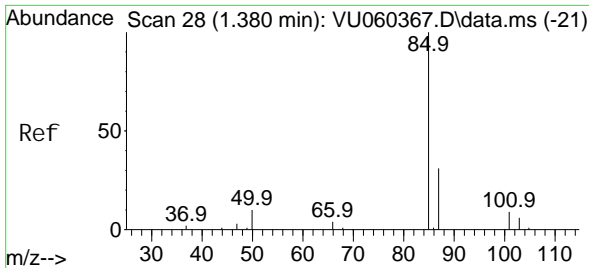
Compound	R. T.	QI on	Response	Conc	Units	Dev(Min)
27) 1,2-Dichloroethane	5.785	62	52257	6.179	ug/L	97
29) 1,1,1-Trichloroethane	5.309	97	63714	5.140	ug/L	97
30) Cyclohexane	5.377	56	44083	4.393	ug/L	97
31) Carbon tetrachloride	5.515	117	53923	4.964	ug/L	98
33) Benzene	5.766	78	189033	5.799	ug/L	100
34) Trichloroethene	6.535	95	578667	67.814	ug/L	98
35) Methylcyclohexane	6.756	83	43303	3.886	ug/L	98
37) 1,2-Dichloropropane	6.782	63	48146	5.427	ug/L	99
38) Bromodichloromethane	7.097	83	59186	5.397	ug/L	96
39) cis-1,3-Dichloropropene	7.602	75	56501	4.689	ug/L	100
40) 4-Methyl-2-pentanone	7.785	43	246798	59.593	ug/L	97
42) Toluene	7.962	91	193274	5.611	ug/L	97
44) trans-1,3-Dichloropropene	8.203	75	47757	4.797	ug/L	96
45) 1,1,2-Trichloroethane	8.393	97	37178	5.472	ug/L	98
47) Tetrachloroethene	8.547	164	30198	4.524	ug/L	97
48) 2-Hexanone	8.679	43	188612	60.077	ug/L	97
49) Dibromochloromethane	8.801	129	38964	5.393	ug/L	94
50) 1,2-Dibromoethane	8.917	107	33233	5.494	ug/L	98
51) Chlorobenzene	9.441	112	114861	4.943	ug/L	97
52) Ethylbenzene	9.563	91	174303	4.803	ug/L	100
53) m,p-Xylene	9.689	106	67046	4.861	ug/L	97
54) o-Xylene	10.094	106	65982	4.999	ug/L	97
55) Styrene	10.107	104	111462	4.881	ug/L	97
57) 1,1,2,2-Tetrachloroethane	10.775	83	46551	5.510	ug/L	98
59) Bromoform	10.284	173	24083	5.708	ug/L	98
60) Isopropylbenzene	10.476	105	165475	4.933	ug/L	100
61) 1,2,3-Trichloropropane	10.814	75	31579	5.871	ug/L	96
62) 1,3,5-Trimethylbenzene	11.081	105	123712	4.790	ug/L	99
63) 1,2,4-Trimethylbenzene	11.460	105	122667	4.820	ug/L	100
64) 1,3-Dichlorobenzene	11.740	146	85350	4.992	ug/L	98
65) 1,4-Dichlorobenzene	11.830	146	86030	4.992	ug/L	97
67) 1,2-Dichlorobenzene	12.206	146	83807	5.191	ug/L	99
68) 1,2-Dibromo-3-chloropropane	12.991	75	6138	6.087	ug/L	91
69) 1,3,5-Trichlorobenzene	13.213	180	55287	4.279	ug/L	100
70) 1,2,4-trichlorobenzene	13.833	180	43533	4.292	ug/L	99
71) Naphthalene	14.081	128	70315	4.875	ug/L	100
72) 1,2,3-Trichlorobenzene	14.322	180	40943	4.505	ug/L	96

(#) = qualifier out of range (m) = manual integration (+) = signals summed

Data Path : Z:\voasrv\HPCHEM1\MSVOA\_U\Data\VU080924\  
 Data File : VU060372.D  
 Acq On : 09 Aug 2024 13:08  
 Operator : MD/SY  
 Sample : P3401-04MS  
 Misc : 25.0mL/MSVOA\_U/WATER  
 ALS Vial : 8 Sample Multiplier: 1

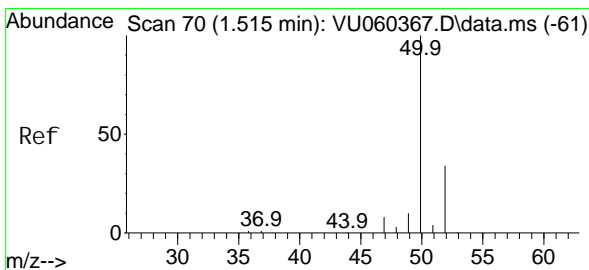
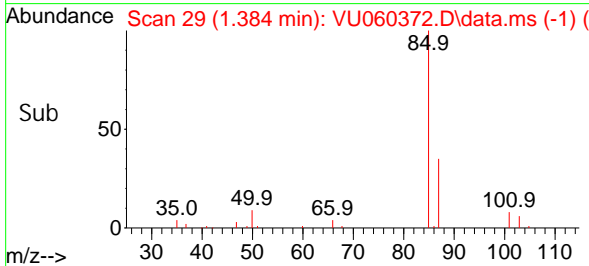
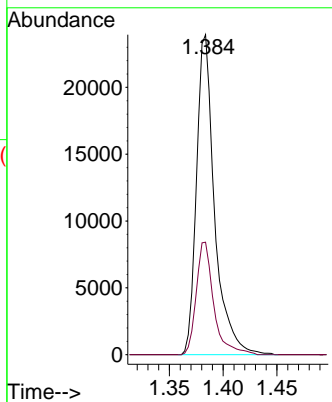
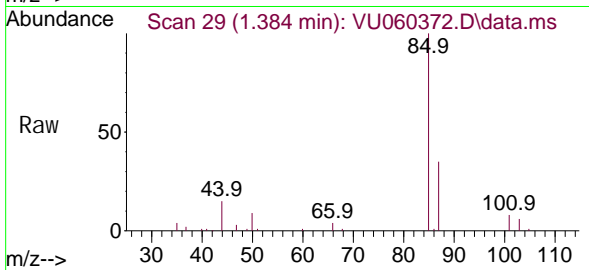
Quant Time: Aug 10 04:53:45 2024  
 Quant Method : Z:\voasrv\HPCHEM1\MSVOA\_U\Method\SFAMUTR080824WMA.M  
 Quant Title : TRACE VOA SFAM1.0  
 QLast Update : Sat Aug 10 04:43:24 2024  
 Response via : Initial Calibration





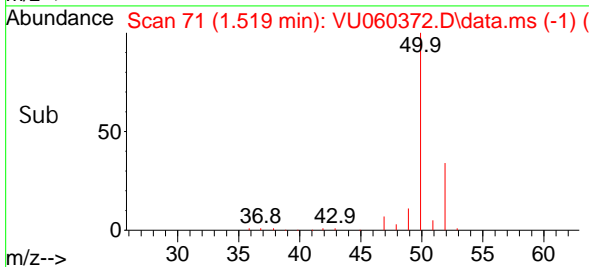
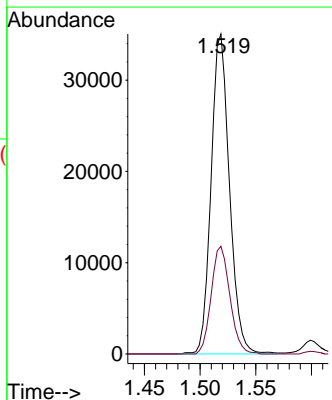
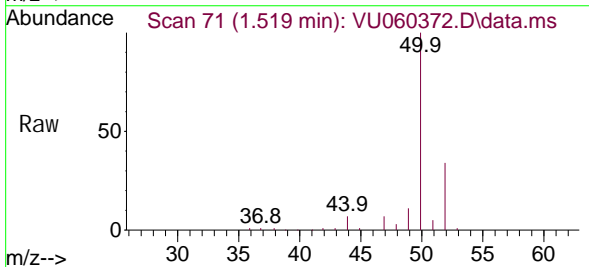
#2  
 Dichlorodifluoromethane  
 Concen: 4.733 ug/L  
 RT: 1.384 min Scan# 29  
 Delta R.T. 0.003 min  
 Lab File: VU060372.D  
 Acq: 09 Aug 2024 13:08

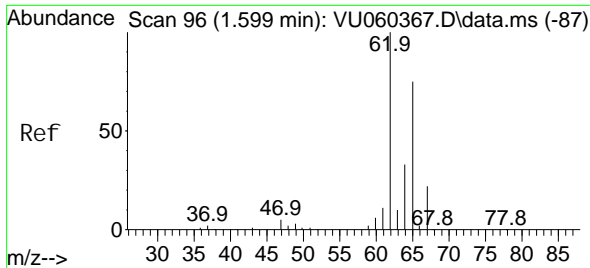
Tgt Ion: 85 Resp: 27946  
 Ion Ratio Lower Upper  
 85 100  
 87 34.1 25.7 38.5



#3  
 Chloromethane  
 Concen: 5.482 ug/L  
 RT: 1.519 min Scan# 71  
 Delta R.T. 0.003 min  
 Lab File: VU060372.D  
 Acq: 09 Aug 2024 13:08

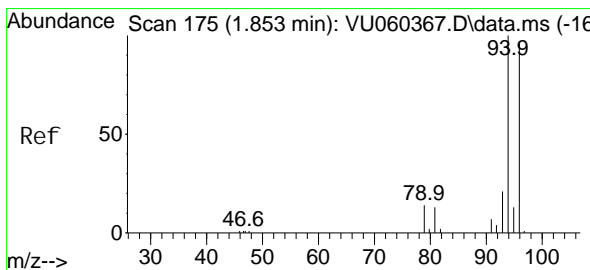
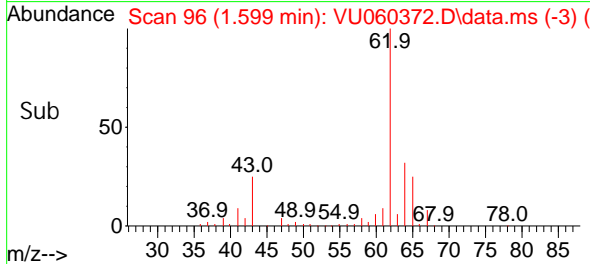
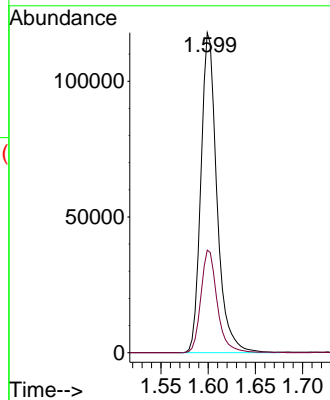
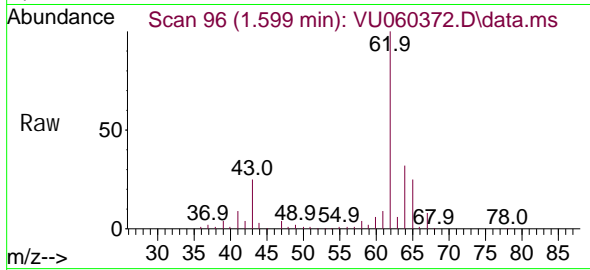
Tgt Ion: 50 Resp: 40265  
 Ion Ratio Lower Upper  
 50 100  
 52 33.7 22.8 42.4





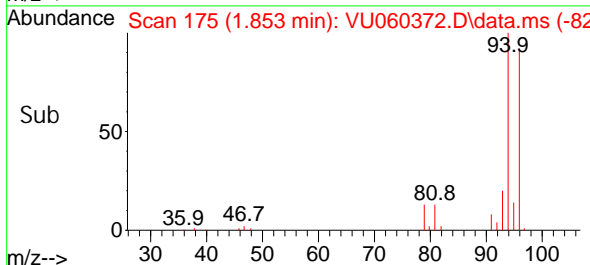
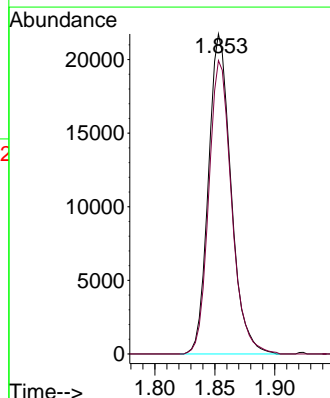
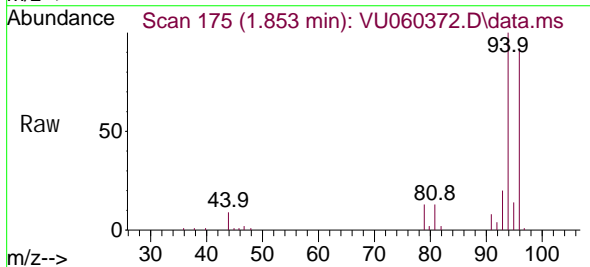
#5  
 Vinyl chloride  
 Concen: 16.165 ug/L  
 RT: 1.599 min Scan# 96  
 Delta R.T. 0.000 min  
 Lab File: VU060372.D  
 Acq: 09 Aug 2024 13:08

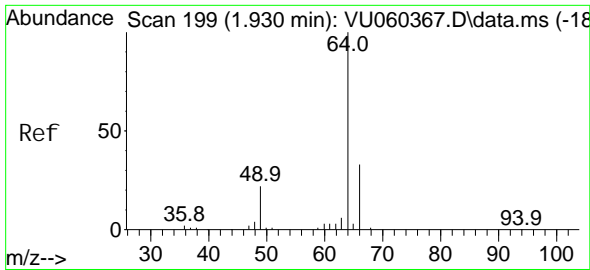
Tgt Ion: 62 Resp: 139004  
 Ion Ratio Lower Upper  
 62 100  
 64 32.0 24.1 44.7



#6  
 Bromomethane  
 Concen: 4.681 ug/L  
 RT: 1.853 min Scan# 175  
 Delta R.T. 0.000 min  
 Lab File: VU060372.D  
 Acq: 09 Aug 2024 13:08

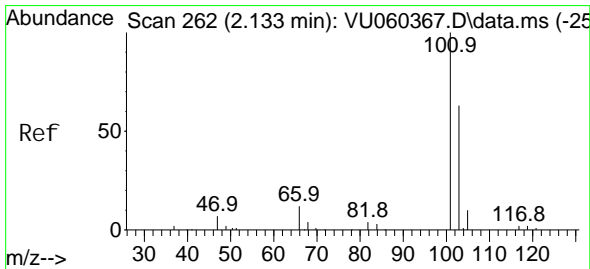
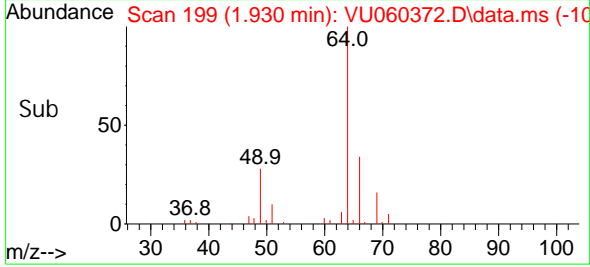
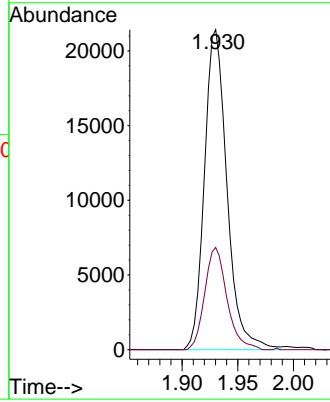
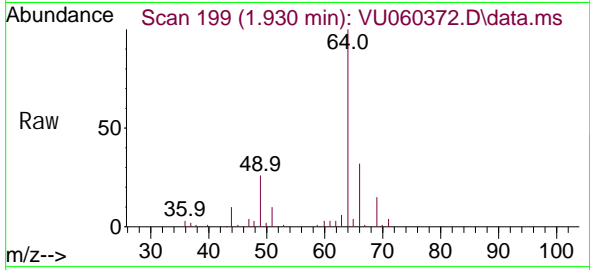
Tgt Ion: 94 Resp: 28502  
 Ion Ratio Lower Upper  
 94 100  
 96 91.7 63.2 117.4





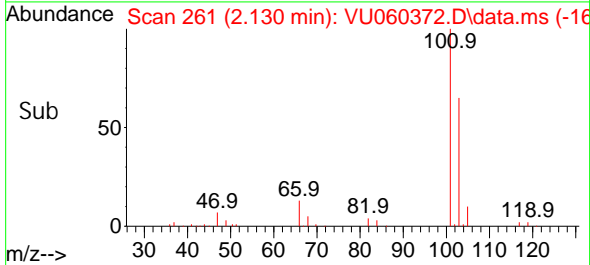
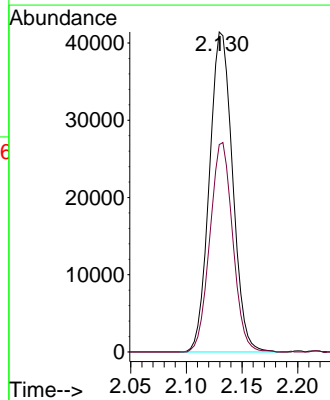
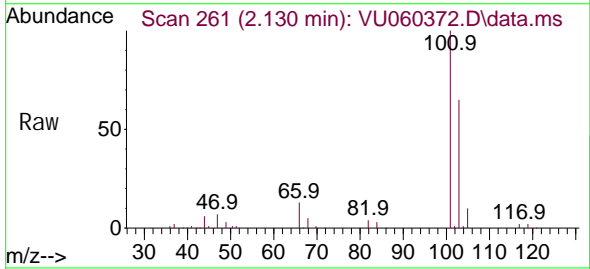
#8  
 Chloroethane  
 Concen: 5.167 ug/L  
 RT: 1.930 min Scan# 199  
 Delta R.T. 0.000 min  
 Lab File: VU060372.D  
 Acq: 09 Aug 2024 13:08

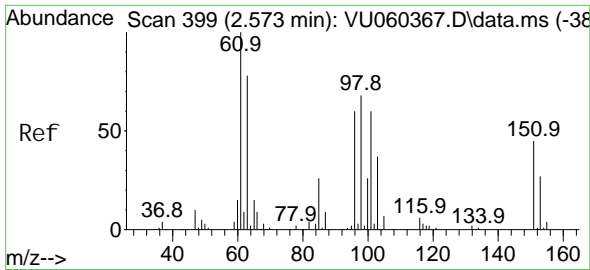
Tgt Ion: 64 Resp: 30137  
 Ion Ratio Lower Upper  
 64 100  
 66 32.0 22.2 41.2



#9  
 Trichlorofluoromethane  
 Concen: 4.972 ug/L  
 RT: 2.130 min Scan# 261  
 Delta R.T. -0.003 min  
 Lab File: VU060372.D  
 Acq: 09 Aug 2024 13:08

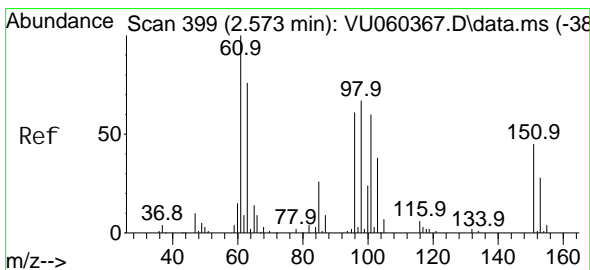
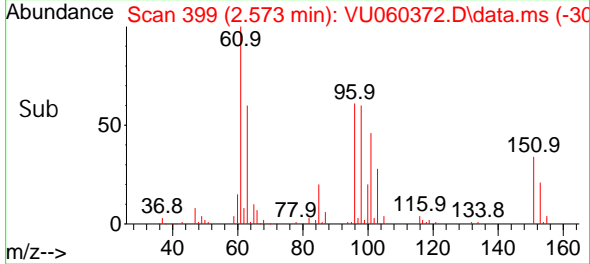
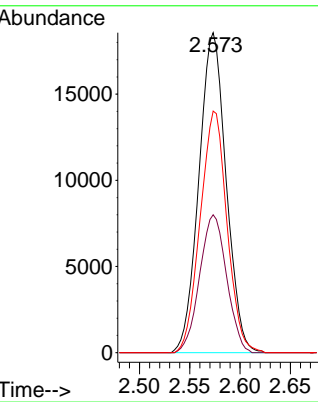
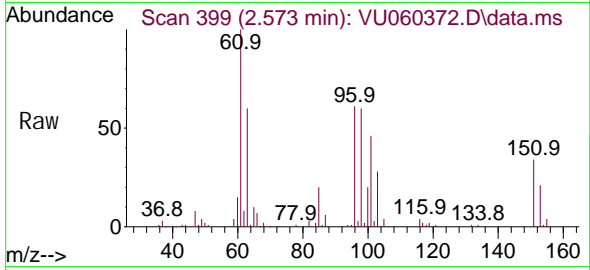
Tgt Ion: 101 Resp: 59935  
 Ion Ratio Lower Upper  
 101 100  
 103 64.4 51.7 77.5





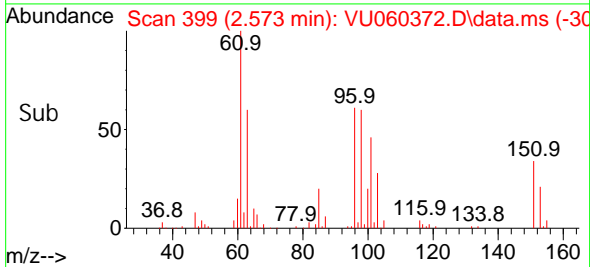
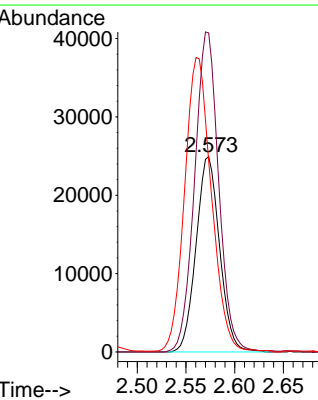
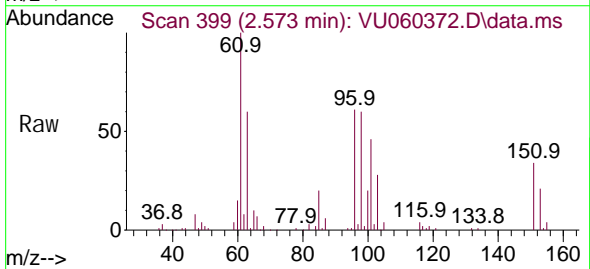
#10  
 1,1,2-Tri chloro-1,2,2-tri fluoroethane  
 Concen: 4.400 ug/L  
 RT: 2.573 min Scan# 399  
 Delta R.T. 0.000 min  
 Lab File: VU060372.D  
 Acq: 09 Aug 2024 13:08

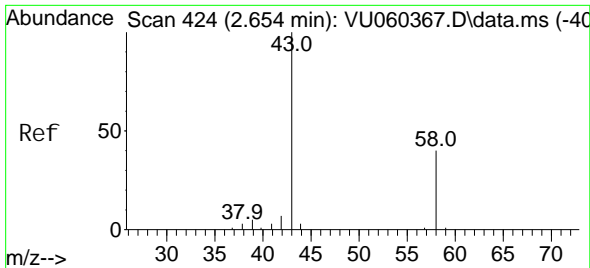
Tgt Ion	Resp	Lower	Upper
101	34958		
101	100		
85	42.6	33.5	50.3
151	74.3	59.7	89.5



#12  
 1,1-Di chloroethene  
 Concen: 5.797 ug/L  
 RT: 2.573 min Scan# 399  
 Delta R.T. 0.000 min  
 Lab File: VU060372.D  
 Acq: 09 Aug 2024 13:08

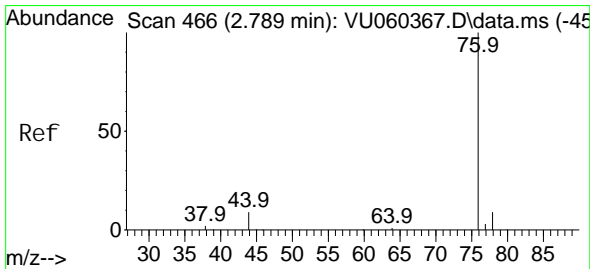
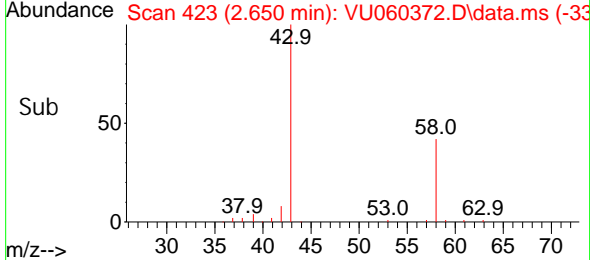
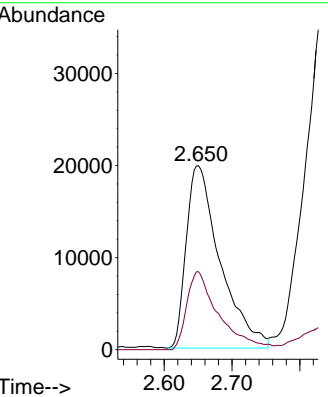
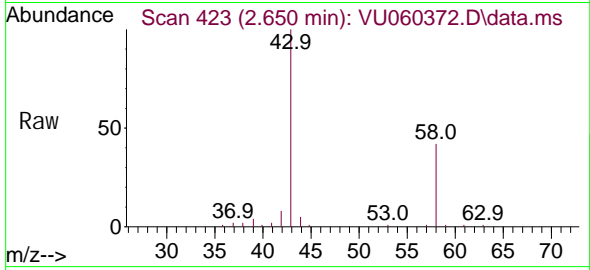
Tgt Ion	Resp	Lower	Upper
96	41840		
96	100		
61	163.3	114.4	212.4
63	97.7	96.0	178.4





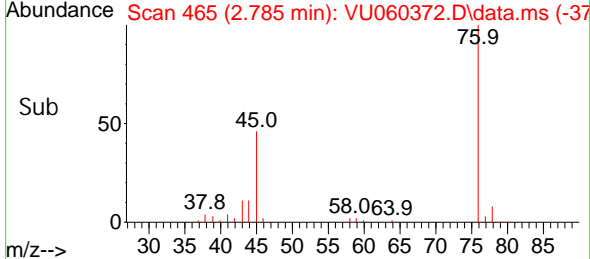
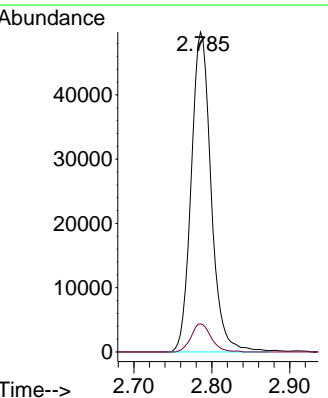
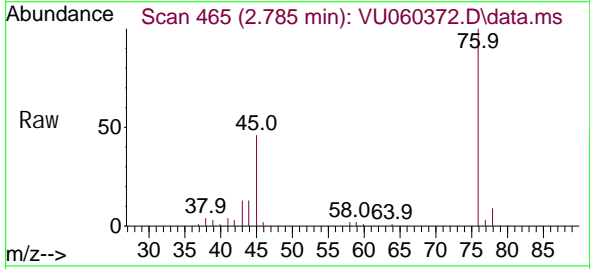
#13  
 Acetone  
 Concen: 55.403 ug/L  
 RT: 2.650 min Scan# 423  
 Delta R.T. -0.003 min  
 Lab File: VU060372.D  
 Acq: 09 Aug 2024 13:08

Tgt Ion: 43 Resp: 68987  
 Ion Ratio Lower Upper  
 43 100  
 58 40.4 0.0 78.8

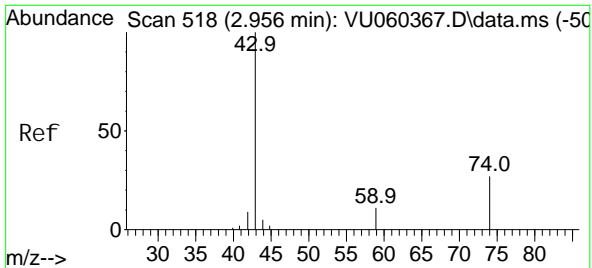


#14  
 Carbon di sul fi de  
 Concen: 4.841 ug/L  
 RT: 2.785 min Scan# 465  
 Delta R.T. -0.003 min  
 Lab File: VU060372.D  
 Acq: 09 Aug 2024 13:08

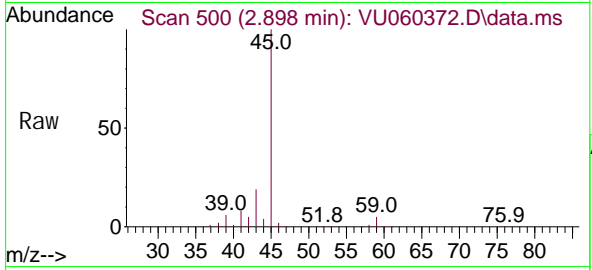
Tgt Ion: 76 Resp: 88148  
 Ion Ratio Lower Upper  
 76 100  
 78 8.8 7.4 11.0



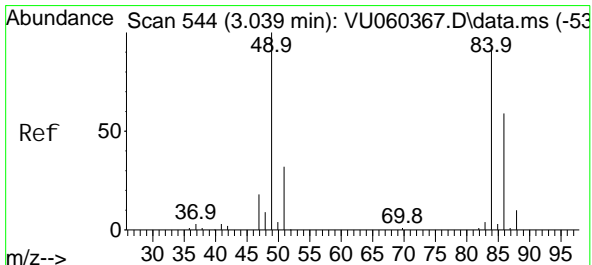
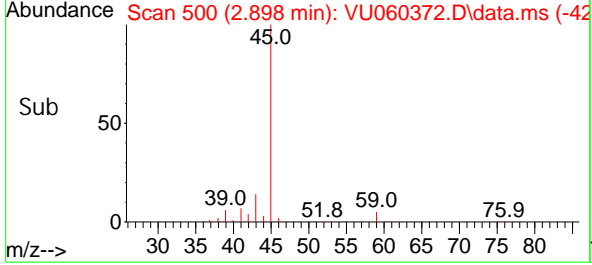
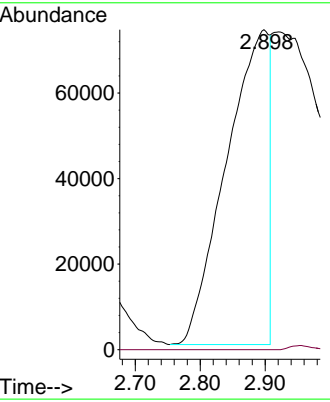




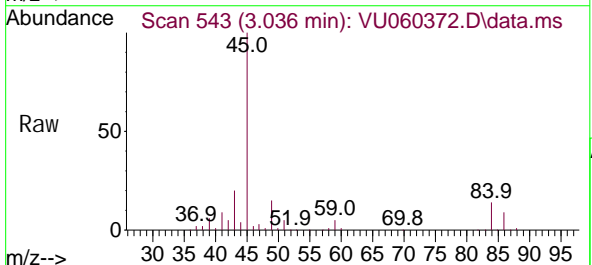
#15  
Methyl Acetate  
Concen: 131.015 ug/L  
RT: 2.898 min Scan# 500  
Delta R.T. -0.058 min  
Lab File: VU060372.D  
Acq: 09 Aug 2024 13:08



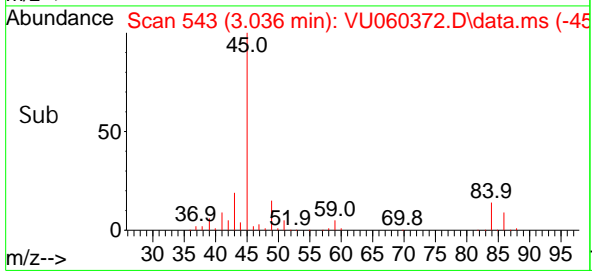
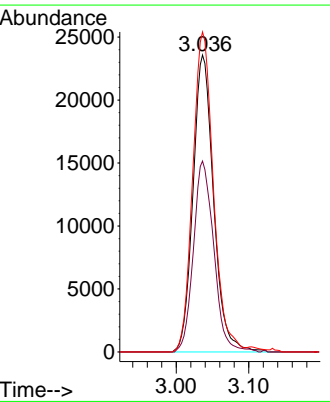
Tgt Ion: 43 Resp: 338013  
Ion Ratio Lower Upper  
43 100  
74 0.7 21.3 31.9#

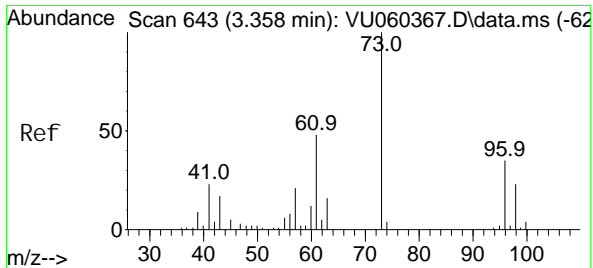


#16  
Methylene chloride  
Concen: 4.536 ug/L  
RT: 3.036 min Scan# 543  
Delta R.T. -0.003 min  
Lab File: VU060372.D  
Acq: 09 Aug 2024 13:08



Tgt Ion: 84 Resp: 46535  
Ion Ratio Lower Upper  
84 100  
86 64.3 47.1 87.5  
49 107.8 73.9 137.3

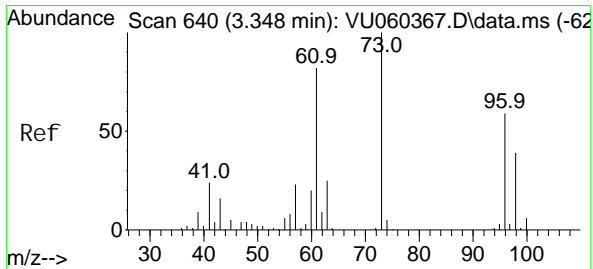
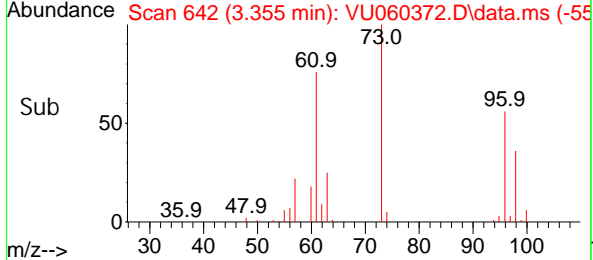
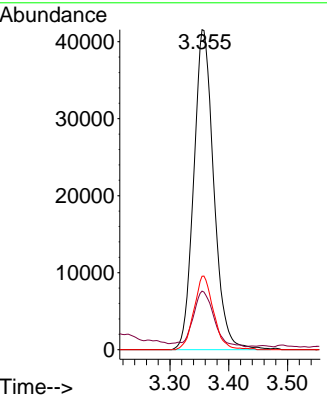
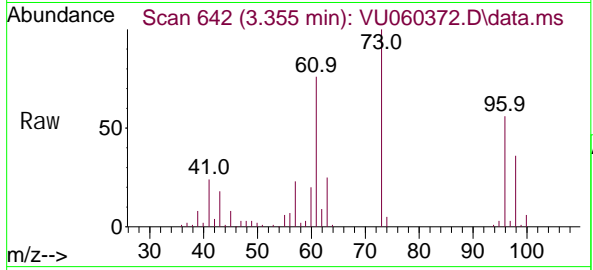




#17  
 Methyl tert-butyl Ether  
 Concen: 5.771 ug/L  
 RT: 3.355 min Scan# 642  
 Delta R.T. -0.003 min  
 Lab File: VU060372.D  
 Acq: 09 Aug 2024 13:08

Tgt Ion: 73 Resp: 98199

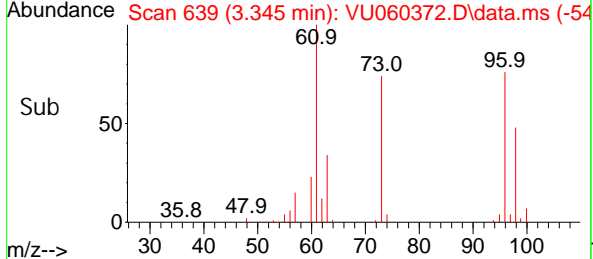
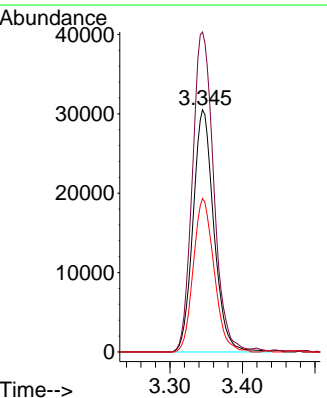
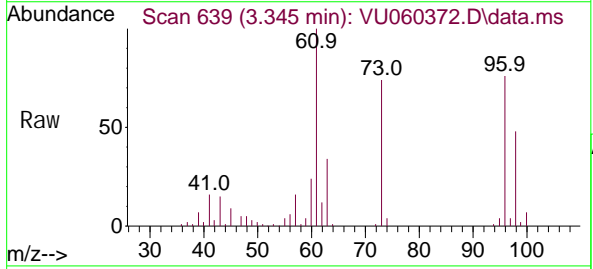
Ion	Ratio	Lower	Upper
73	100		
43	18.2	12.8	19.2
57	22.6	17.5	26.3

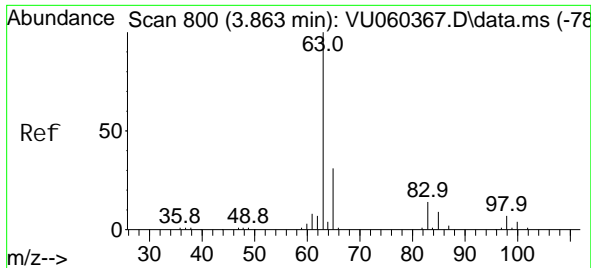


#18  
 trans-1,2-Dichloroethene  
 Concen: 8.608 ug/L  
 RT: 3.345 min Scan# 639  
 Delta R.T. -0.003 min  
 Lab File: VU060372.D  
 Acq: 09 Aug 2024 13:08

Tgt Ion: 96 Resp: 60946

Ion	Ratio	Lower	Upper
96	100		
61	132.1	93.7	174.1
98	63.4	44.7	82.9

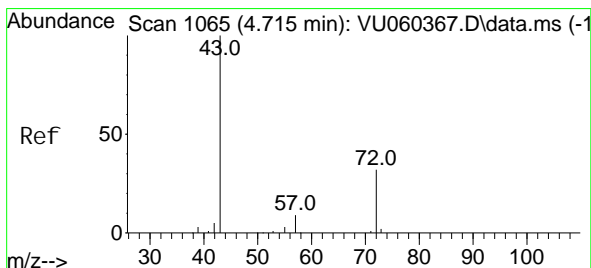
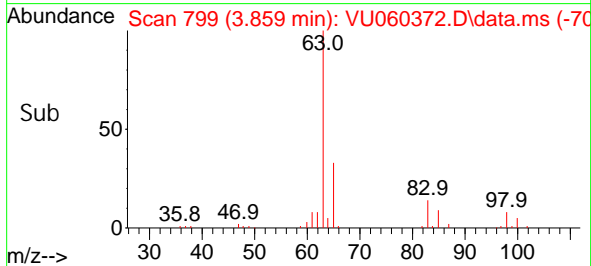
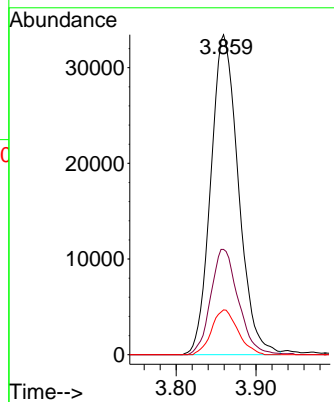
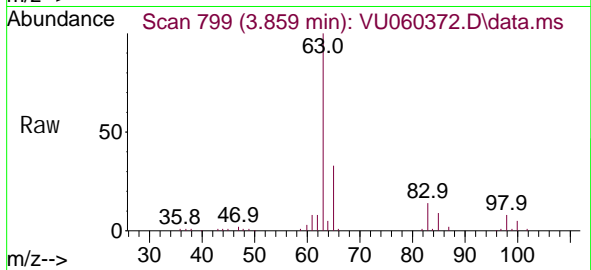




#19  
 1,1-Dichloroethane  
 Concen: 5.490 ug/L  
 RT: 3.859 min Scan# 799  
 Delta R.T. -0.003 min  
 Lab File: VU060372.D  
 Acq: 09 Aug 2024 13:08

Tgt Ion: 63 Resp: 80249

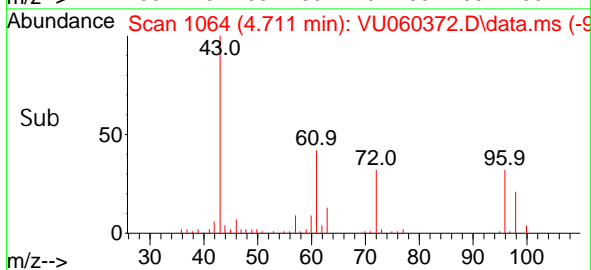
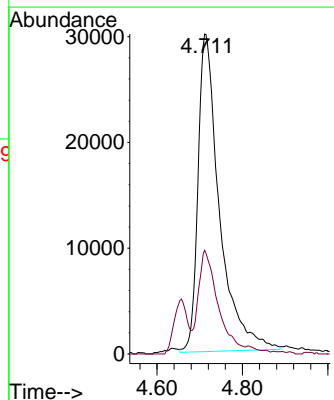
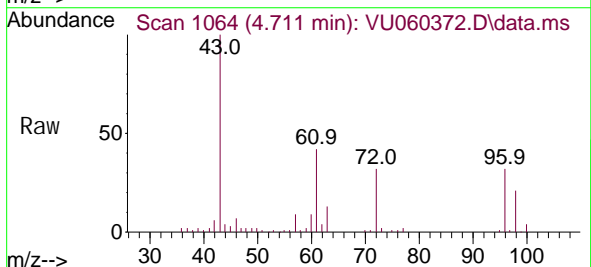
Ion	Ratio	Lower	Upper
63	100		
65	32.9	22.2	41.2
83	14.0	9.1	16.9

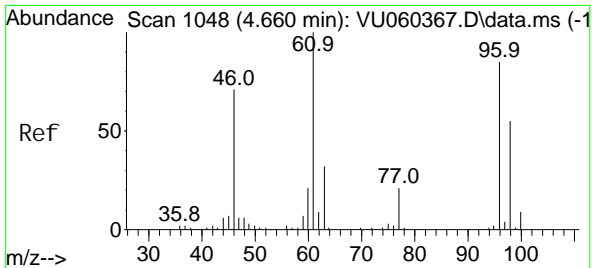


#21  
 2-Butanone  
 Concen: 56.429 ug/L  
 RT: 4.711 min Scan# 1064  
 Delta R.T. -0.003 min  
 Lab File: VU060372.D  
 Acq: 09 Aug 2024 13:08

Tgt Ion: 43 Resp: 104726

Ion	Ratio	Lower	Upper
43	100		
72	28.7	15.9	47.6

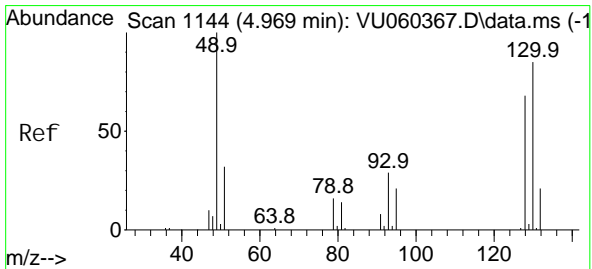
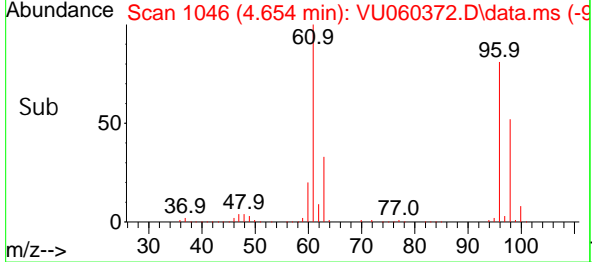
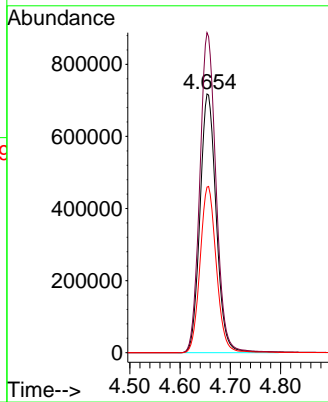
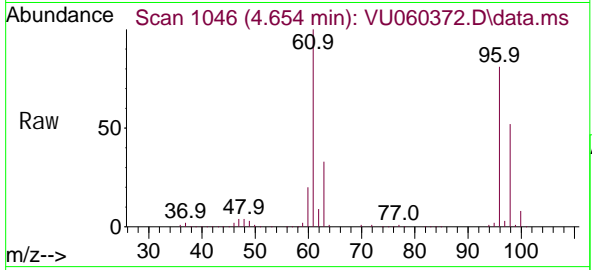




#22  
 cis-1,2-Dichloroethene  
 Concen: 188.010 ug/L  
 RT: 4.654 min Scan# 1046  
 Delta R.T. -0.006 min  
 Lab File: VU060372.D  
 Acq: 09 Aug 2024 13:08

Tgt Ion: 96 Resp: 1607000

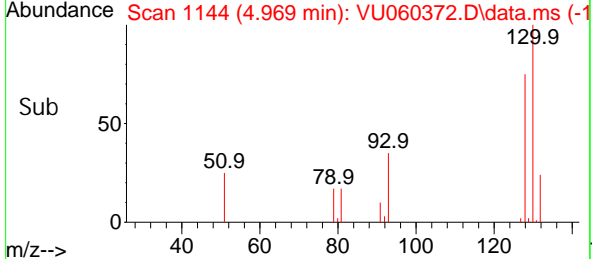
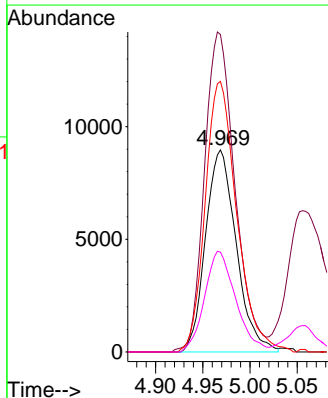
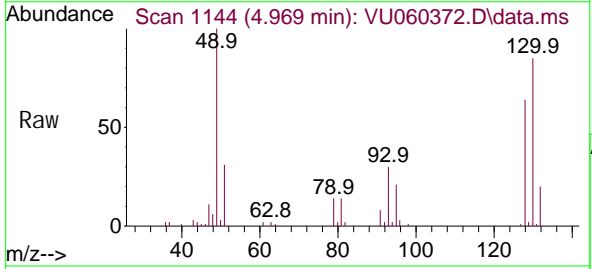
Ion	Ratio	Lower	Upper
96	100		
61	123.7	81.5	151.5
98	64.0	43.5	80.7

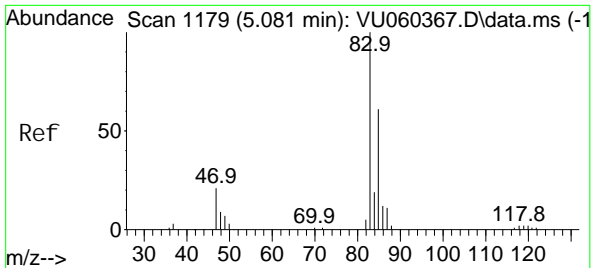


#23  
 Bromochloromethane  
 Concen: 5.135 ug/L  
 RT: 4.969 min Scan# 1144  
 Delta R.T. 0.000 min  
 Lab File: VU060372.D  
 Acq: 09 Aug 2024 13:08

Tgt Ion: 128 Resp: 20256

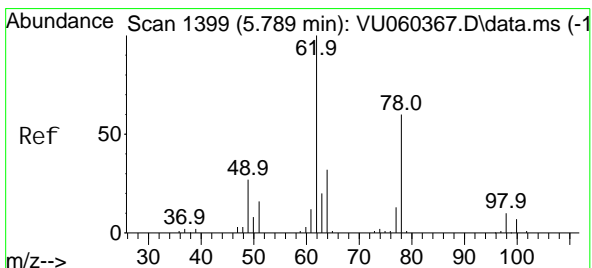
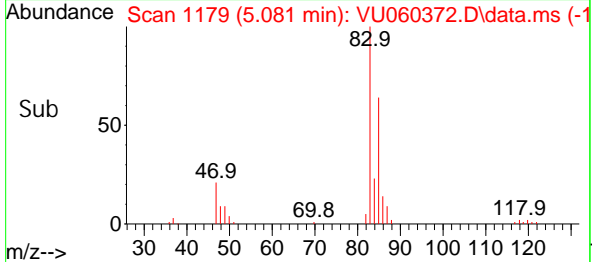
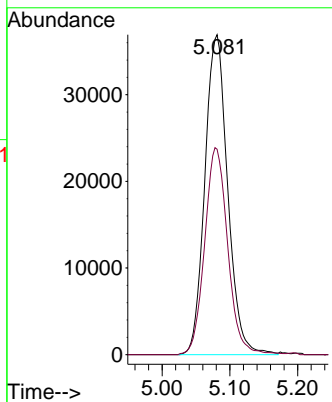
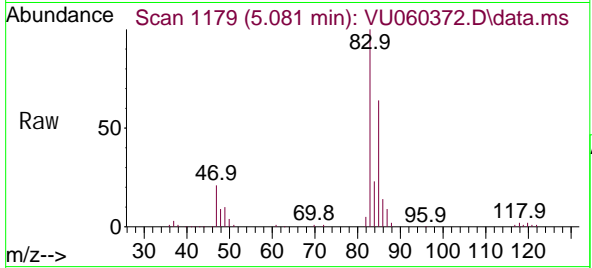
Ion	Ratio	Lower	Upper
128	100		
49	157.0	101.0	187.6
130	133.9	92.7	172.1
51	49.4	42.5	63.7





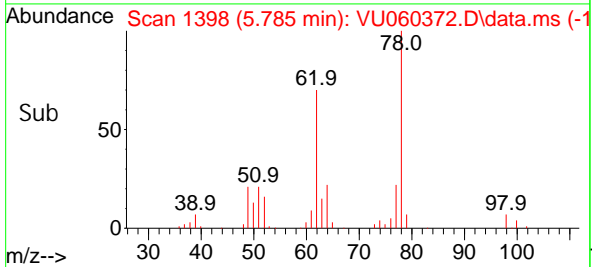
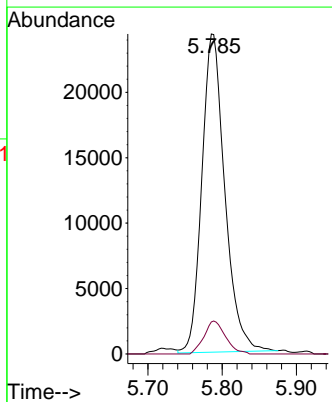
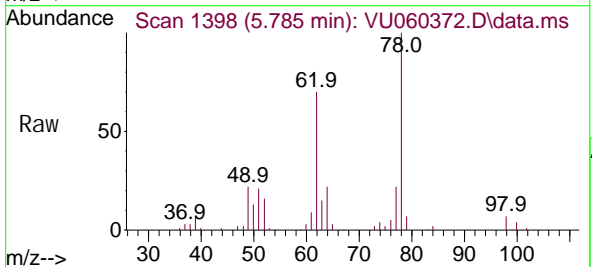
#25  
 Chloroform  
 Concen: 5.439 ug/L  
 RT: 5.081 min Scan# 1179  
 Delta R.T. 0.000 min  
 Lab File: VU060372.D  
 Acq: 09 Aug 2024 13:08

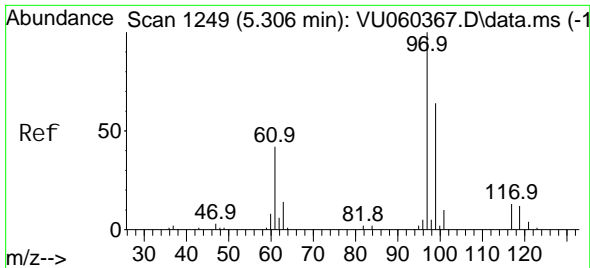
Tgt Ion: 83 Resp: 86484  
 Ion Ratio Lower Upper  
 83 100  
 85 64.2 45.6 84.6



#27  
 1,2-Dichloroethane  
 Concen: 6.179 ug/L  
 RT: 5.785 min Scan# 1398  
 Delta R.T. -0.003 min  
 Lab File: VU060372.D  
 Acq: 09 Aug 2024 13:08

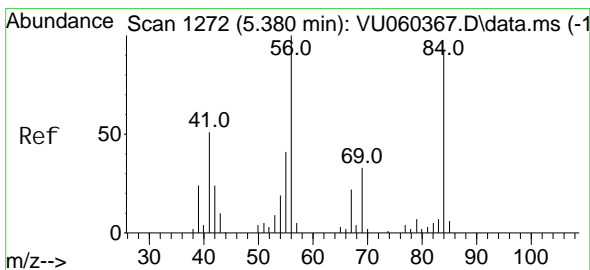
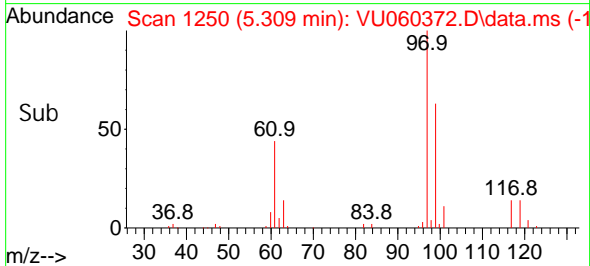
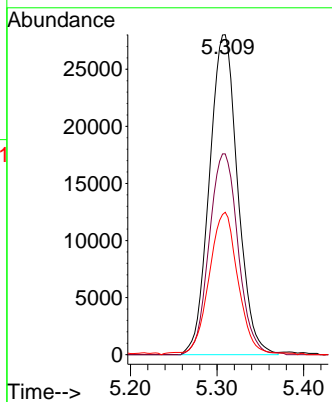
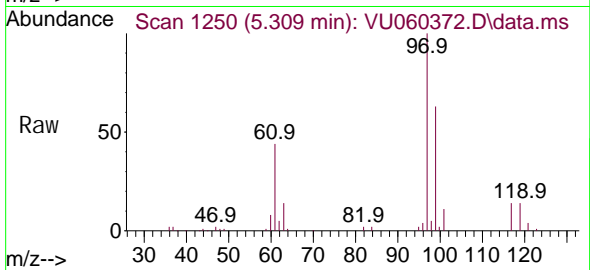
Tgt Ion: 62 Resp: 52257  
 Ion Ratio Lower Upper  
 62 100  
 98 10.0 9.0 13.6





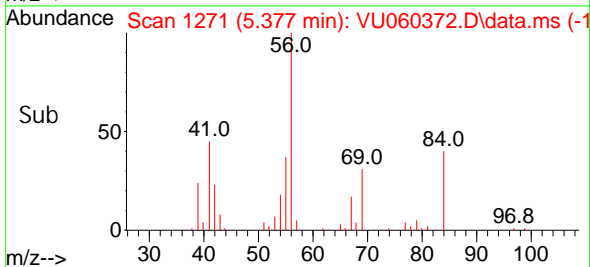
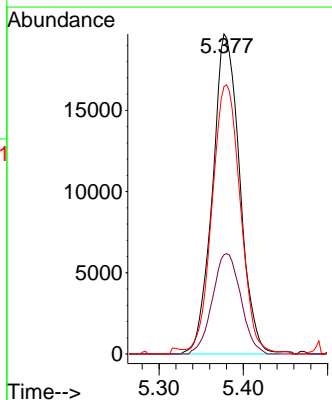
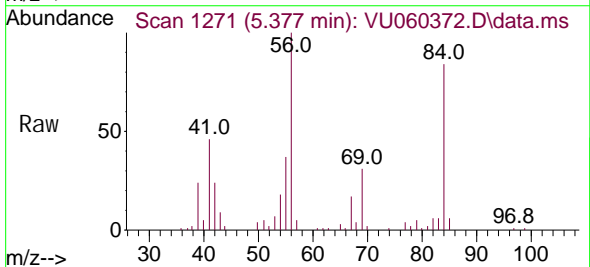
#29  
 1,1,1-Trichloroethane  
 Concen: 5.140 ug/L  
 RT: 5.309 min Scan# 1250  
 Delta R.T. 0.003 min  
 Lab File: VU060372.D  
 Acq: 09 Aug 2024 13:08

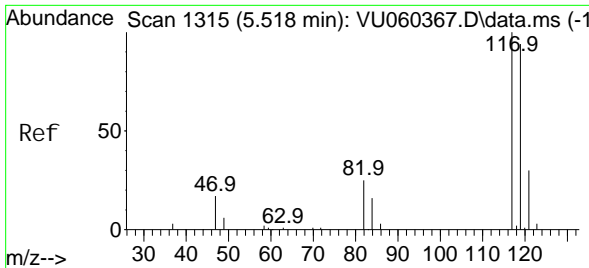
Tgt Ion	Resp	Lower	Upper
97	63714		
97	100		
99	64.1	51.4	77.2
61	45.6	33.0	49.6



#30  
 Cyclohexane  
 Concen: 4.393 ug/L  
 RT: 5.377 min Scan# 1271  
 Delta R.T. -0.003 min  
 Lab File: VU060372.D  
 Acq: 09 Aug 2024 13:08

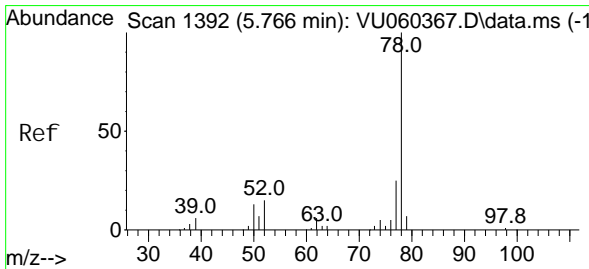
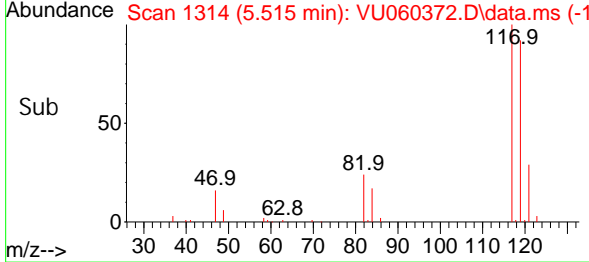
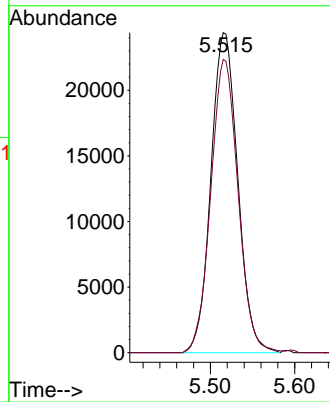
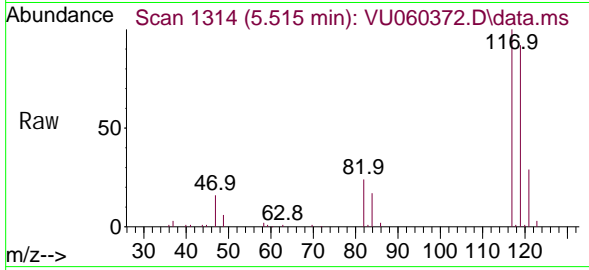
Tgt Ion	Resp	Lower	Upper
56	44083		
56	100		
69	32.6	24.7	37.1
84	85.7	70.7	106.1





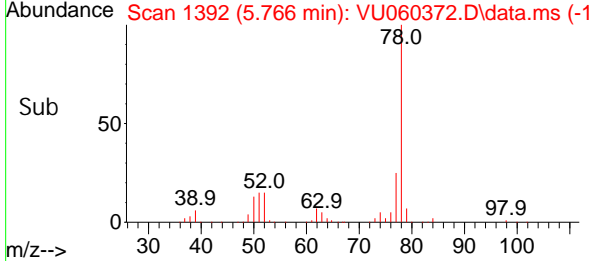
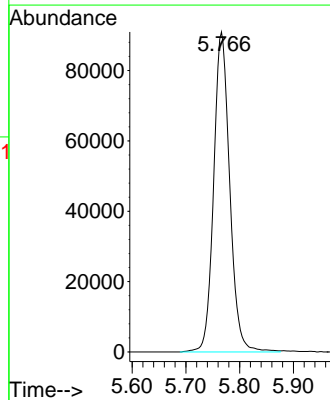
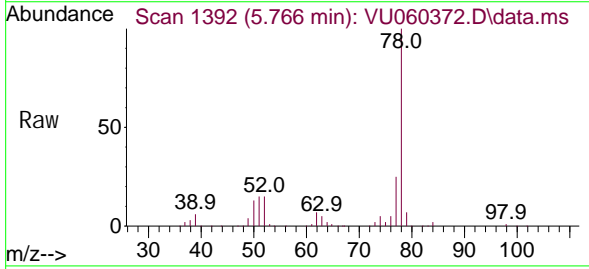
#31  
 Carbon tetrachloride  
 Concen: 4.964 ug/L  
 RT: 5.515 min Scan# 1314  
 Delta R.T. -0.003 min  
 Lab File: VU060372.D  
 Acq: 09 Aug 2024 13:08

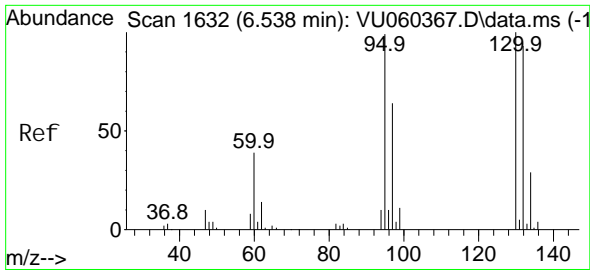
Tgt Ion: 117 Resp: 53923  
 Ion Ratio Lower Upper  
 117 100  
 119 93.2 75.8 113.8



#33  
 Benzene  
 Concen: 5.799 ug/L  
 RT: 5.766 min Scan# 1392  
 Delta R.T. 0.000 min  
 Lab File: VU060372.D  
 Acq: 09 Aug 2024 13:08

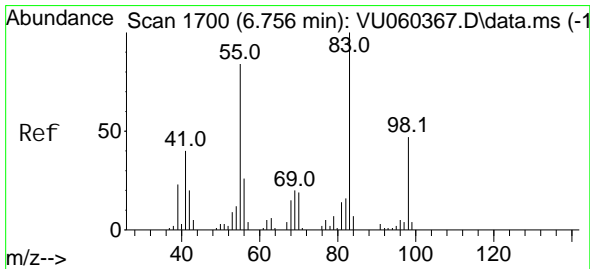
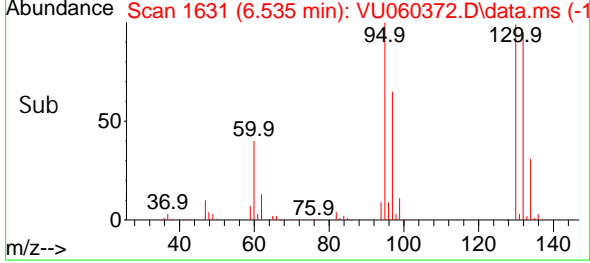
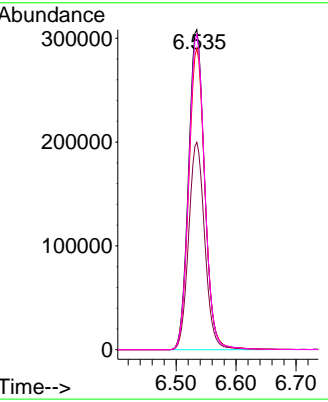
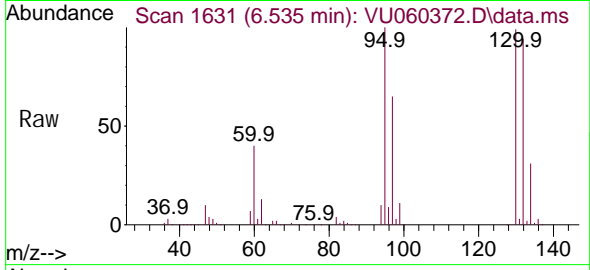
Tgt Ion: 78 Resp: 189033





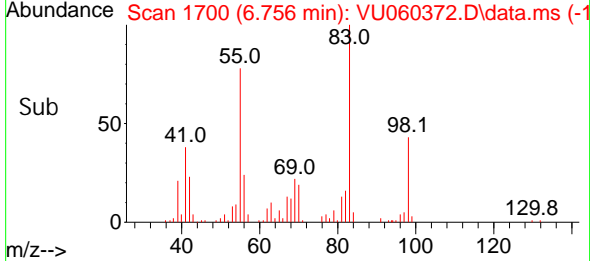
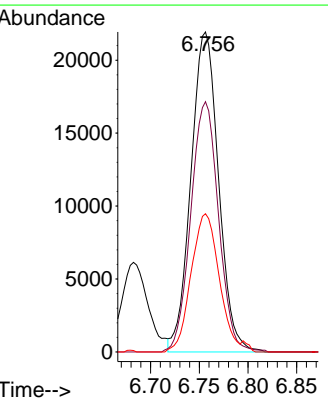
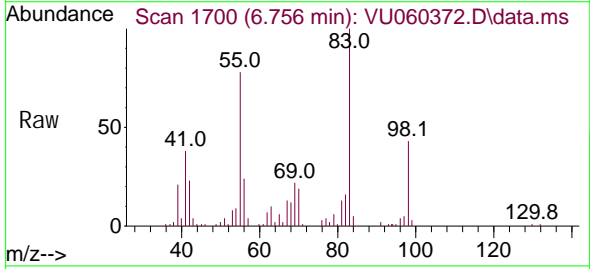
#34  
 Trichloroethene  
 Concen: 67.814 ug/L  
 RT: 6.535 min Scan# 1631  
 Delta R.T. -0.003 min  
 Lab File: VU060372.D  
 Acq: 09 Aug 2024 13:08

Tgt Ion	Resp	Lower	Upper
95	578667		
95	100		
97	64.8	43.6	81.0
132	94.2	67.1	124.5
130	98.5	69.6	129.2

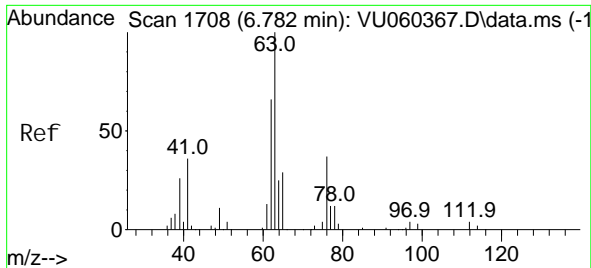


#35  
 Methyl cycl ohexane  
 Concen: 3.886 ug/L  
 RT: 6.756 min Scan# 1700  
 Delta R.T. 0.000 min  
 Lab File: VU060372.D  
 Acq: 09 Aug 2024 13:08

Tgt Ion	Resp	Lower	Upper
83	43303		
83	100		
55	78.5	62.4	93.6
98	43.7	37.3	55.9

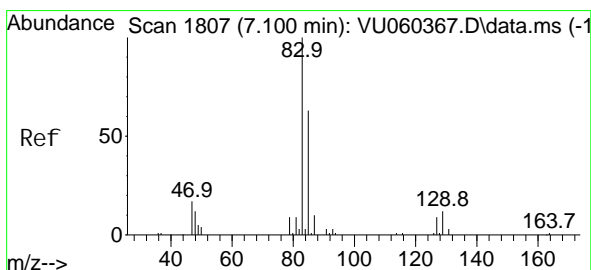
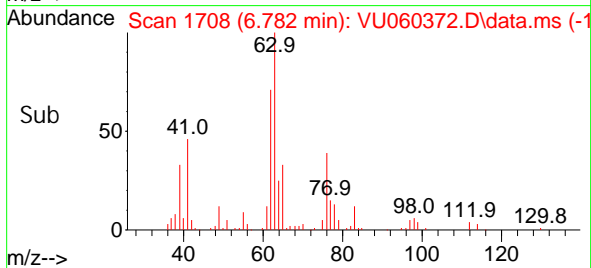
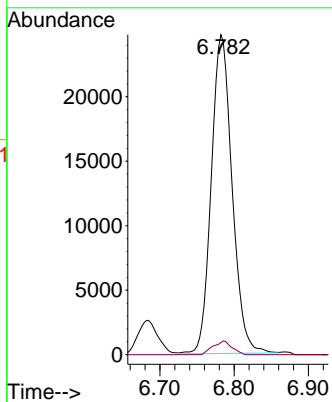
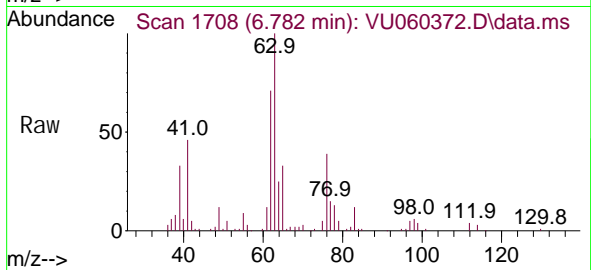






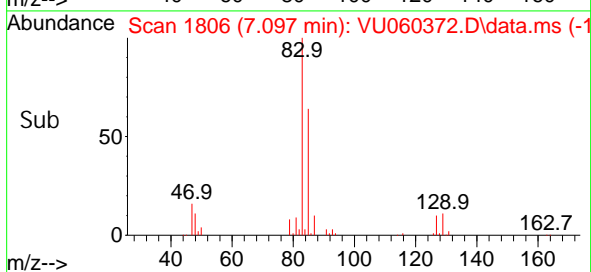
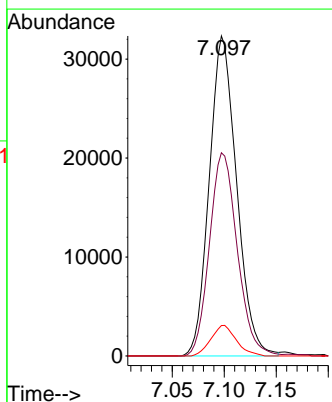
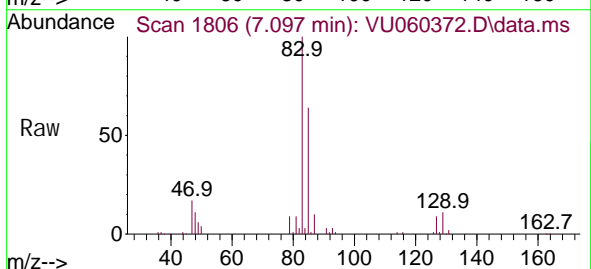
#37  
 1, 2-Di chl oropropane  
 Concen: 5.427 ug/L  
 RT: 6.782 min Scan# 1708  
 Del ta R. T. 0.000 min  
 Lab File: VU060372.D  
 Acq: 09 Aug 2024 13:08

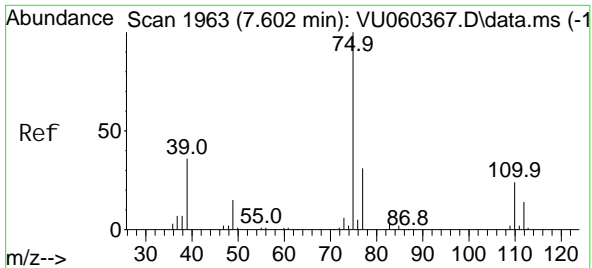
Tgt Ion: 63 Resp: 48146  
 Ion Ratio Lower Upper  
 63 100  
 112 3.9 3.3 4.9



#38  
 Bromodi chl oromethane  
 Concen: 5.397 ug/L  
 RT: 7.097 min Scan# 1806  
 Del ta R. T. -0.003 min  
 Lab File: VU060372.D  
 Acq: 09 Aug 2024 13:08

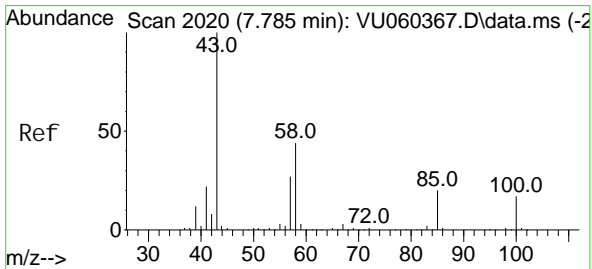
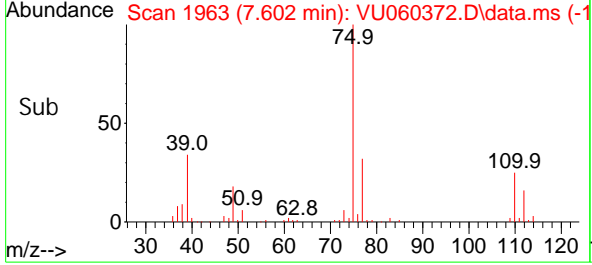
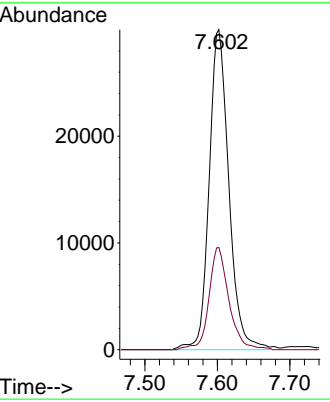
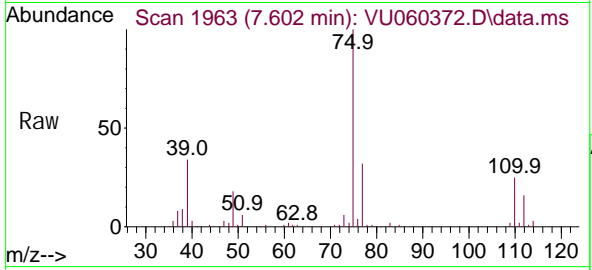
Tgt Ion: 83 Resp: 59186  
 Ion Ratio Lower Upper  
 83 100  
 85 63.5 42.4 78.8  
 127 9.5 7.0 10.4





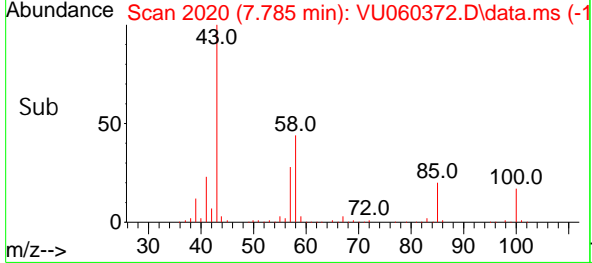
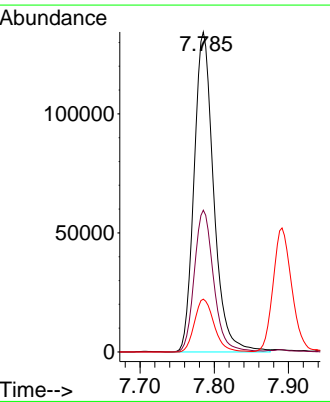
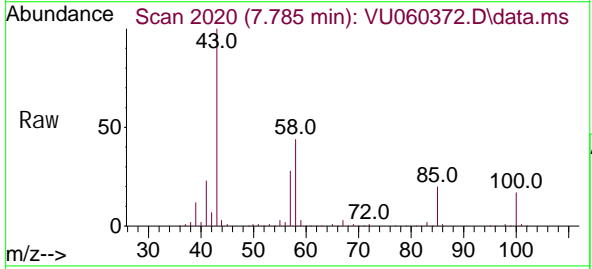
#39  
 cis-1,3-Dichloropropene  
 Concen: 4.689 ug/L  
 RT: 7.602 min Scan# 1963  
 Delta R.T. 0.000 min  
 Lab File: VU060372.D  
 Acq: 09 Aug 2024 13:08

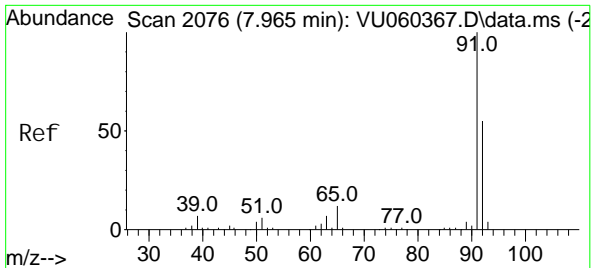
Tgt Ion	Resp	Lower	Upper
75	56501	100	
77	32.0	22.5	41.9



#40  
 4-Methyl-2-pentanone  
 Concen: 59.593 ug/L  
 RT: 7.785 min Scan# 2020  
 Delta R.T. 0.000 min  
 Lab File: VU060372.D  
 Acq: 09 Aug 2024 13:08

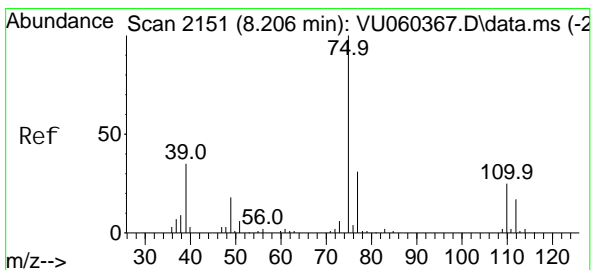
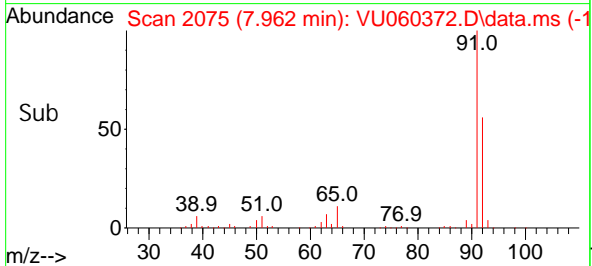
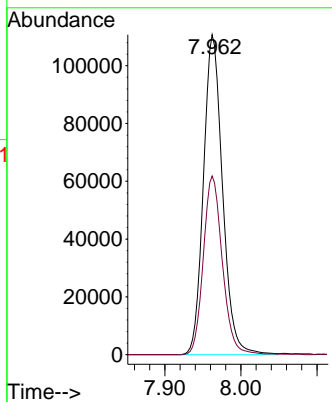
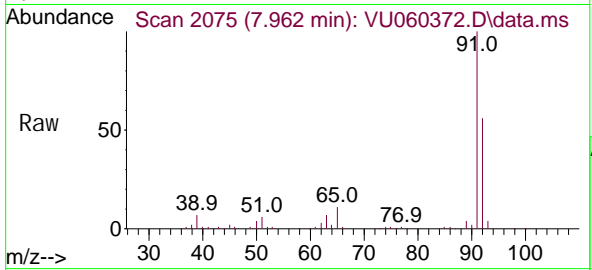
Tgt Ion	Resp	Lower	Upper
43	246798	100	
58	43.8	36.6	55.0
100	16.5	14.1	21.1





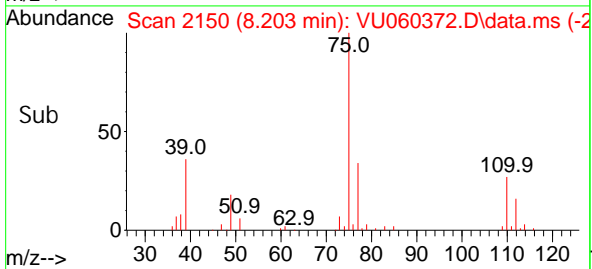
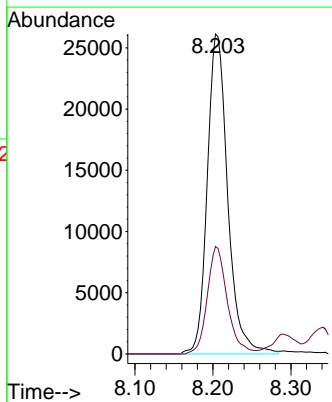
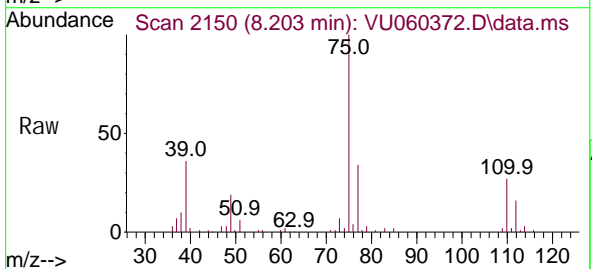
#42  
 Tol uene  
 Concen: 5.611 ug/L  
 RT: 7.962 min Scan# 2075  
 Delta R.T. -0.003 min  
 Lab File: VU060372.D  
 Acq: 09 Aug 2024 13:08

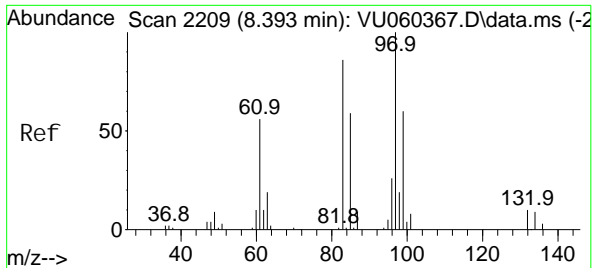
Tgt Ion: 91 Resp: 193274  
 Ion Ratio Lower Upper  
 91 100  
 92 55.9 40.6 75.4



#44  
 trans-1, 3-Di chl oroprene  
 Concen: 4.797 ug/L  
 RT: 8.203 min Scan# 2150  
 Delta R.T. -0.003 min  
 Lab File: VU060372.D  
 Acq: 09 Aug 2024 13:08

Tgt Ion: 75 Resp: 47757  
 Ion Ratio Lower Upper  
 75 100  
 77 33.5 25.0 46.4

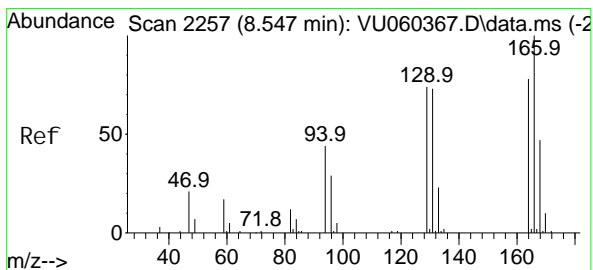
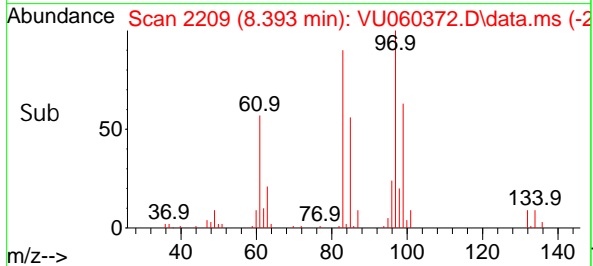
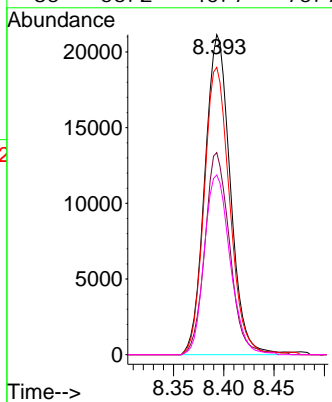
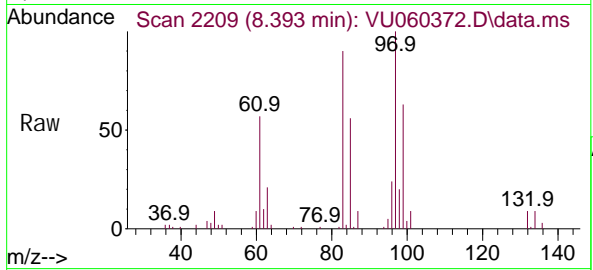




#45  
 1,1,2-Trichloroethane  
 Concen: 5.472 ug/L  
 RT: 8.393 min Scan# 2209  
 Delta R.T. 0.000 min  
 Lab File: VU060372.D  
 Acq: 09 Aug 2024 13:08

Tgt Ion: 97 Resp: 37178

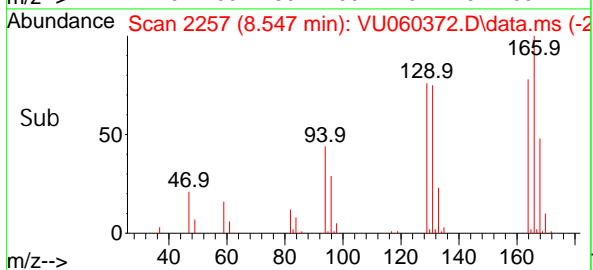
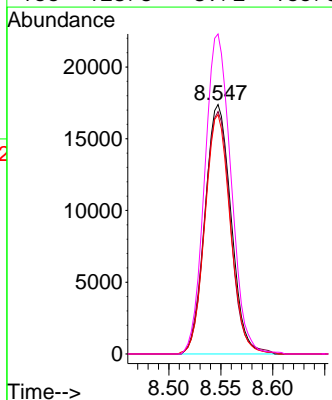
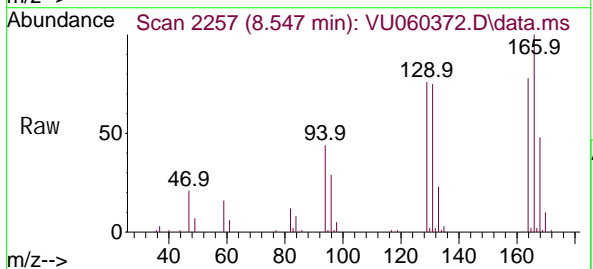
Ion	Ratio	Lower	Upper
97	100		
99	63.2	45.8	85.0
83	89.8	61.7	114.5
85	56.2	40.7	75.7

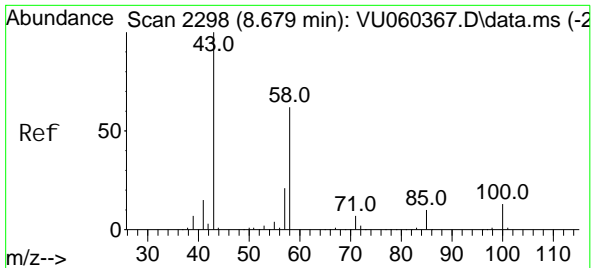


#47  
 Tetrachloroethene  
 Concen: 4.524 ug/L  
 RT: 8.547 min Scan# 2257  
 Delta R.T. 0.000 min  
 Lab File: VU060372.D  
 Acq: 09 Aug 2024 13:08

Tgt Ion: 164 Resp: 30198

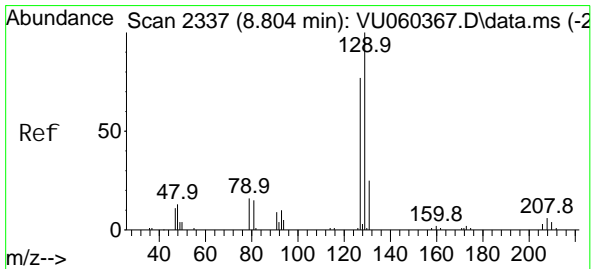
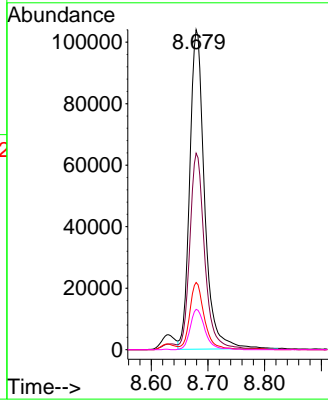
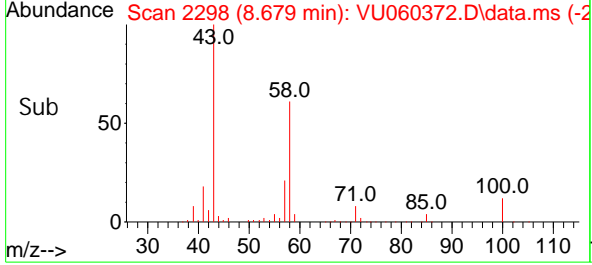
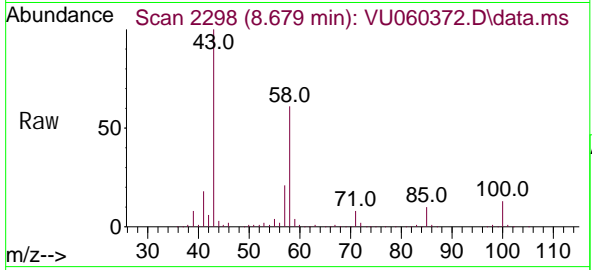
Ion	Ratio	Lower	Upper
164	100		
129	97.2	69.0	128.1
131	96.0	62.6	116.3
166	128.3	89.2	165.8





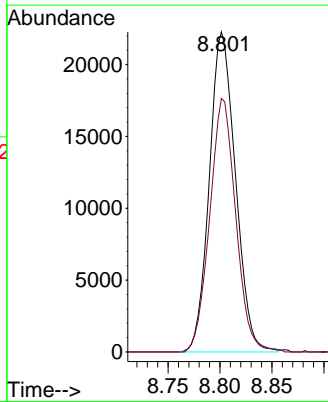
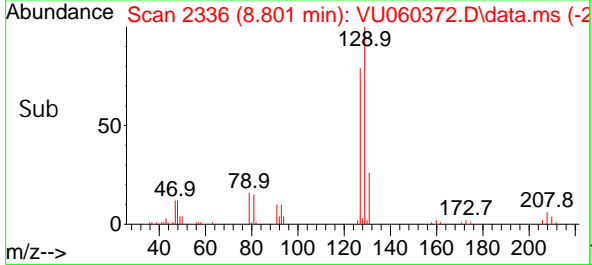
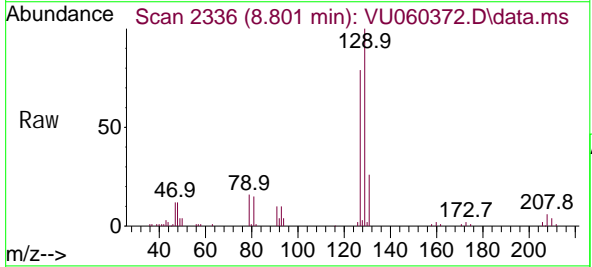
#48  
 2-Hexanone  
 Concen: 60.077 ug/L  
 RT: 8.679 min Scan# 2298  
 Delta R.T. 0.000 min  
 Lab File: VU060372.D  
 Acq: 09 Aug 2024 13:08

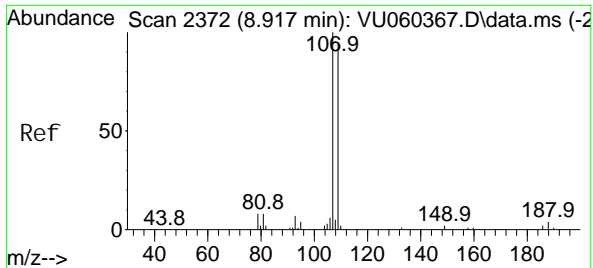
Tgt Ion	Resp	Lower	Upper
43	188612		
58	60.5	50.9	76.3
57	20.5	17.4	26.0
100	12.6	10.2	15.4



#49  
 Di bromochloromethane  
 Concen: 5.393 ug/L  
 RT: 8.801 min Scan# 2336  
 Delta R.T. -0.003 min  
 Lab File: VU060372.D  
 Acq: 09 Aug 2024 13:08

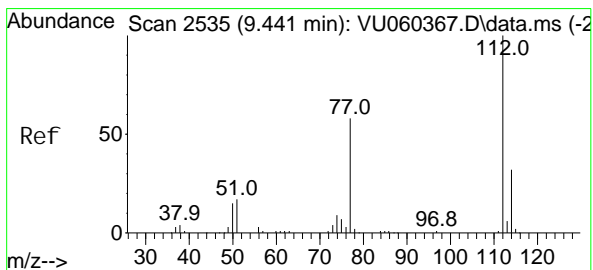
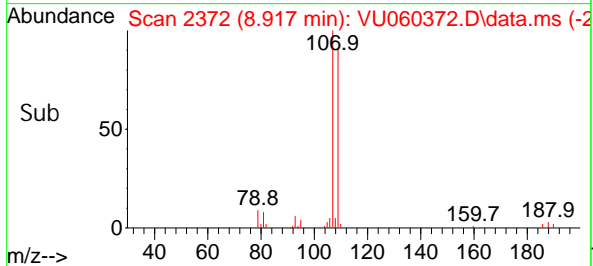
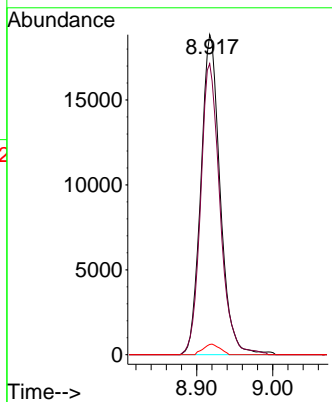
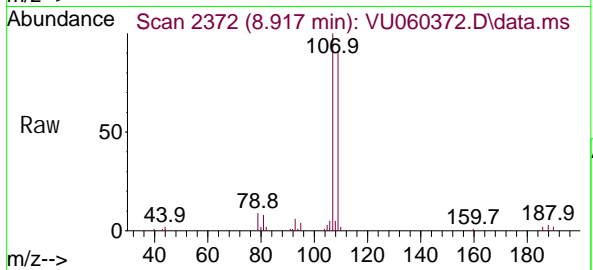
Tgt Ion	Resp	Lower	Upper
129	38964		
127	79.2	51.9	96.3





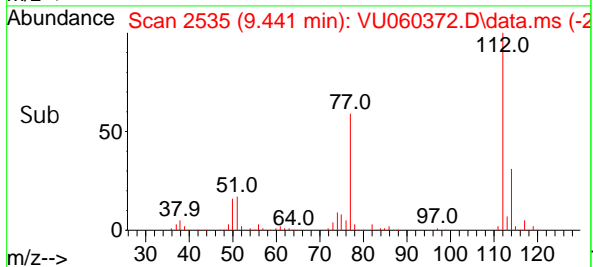
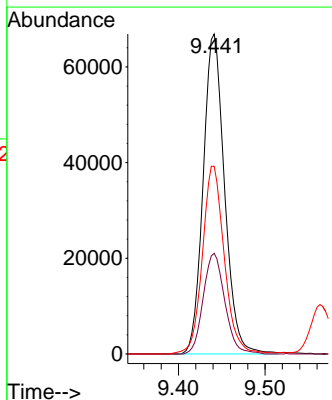
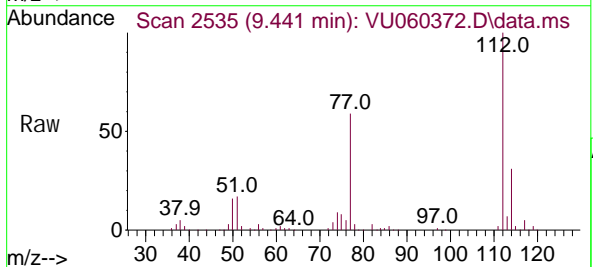
#50  
 1, 2-Di bromoethane  
 Concen: 5.494 ug/L  
 RT: 8.917 min Scan# 2372  
 Delta R.T. 0.000 min  
 Lab File: VU060372.D  
 Acq: 09 Aug 2024 13:08

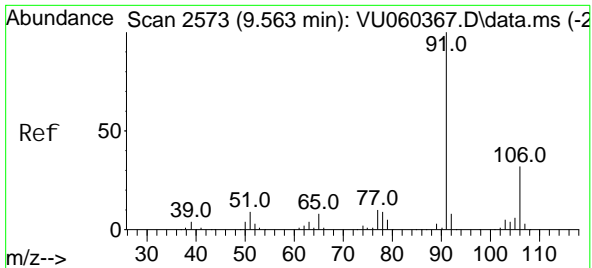
Tgt Ion	Resp	Lower	Upper
107	33233		
109	91.0	64.8	120.3
188	3.2	2.6	3.8



#51  
 Chlorobenzene  
 Concen: 4.943 ug/L  
 RT: 9.441 min Scan# 2535  
 Delta R.T. 0.000 min  
 Lab File: VU060372.D  
 Acq: 09 Aug 2024 13:08

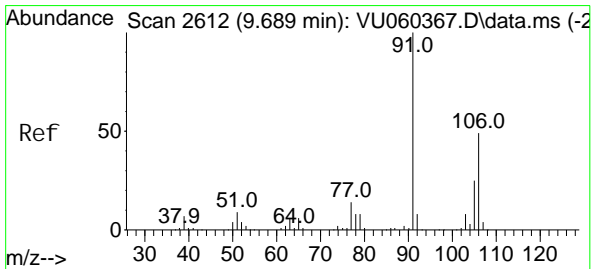
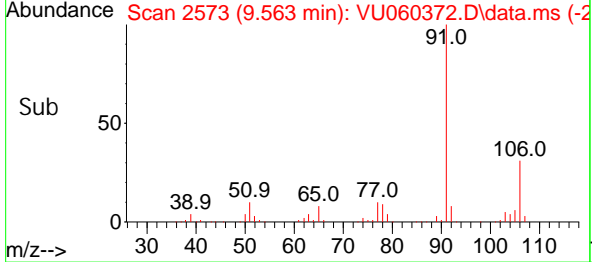
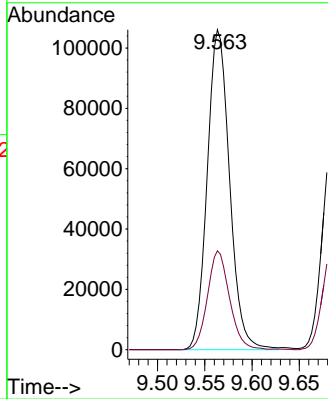
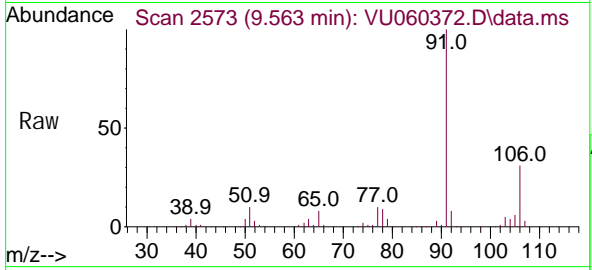
Tgt Ion	Resp	Lower	Upper
112	114861		
114	31.5	21.3	39.5
77	58.7	44.6	67.0





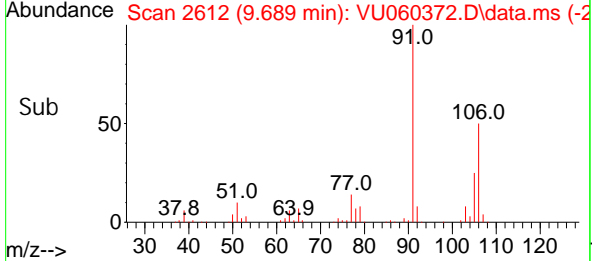
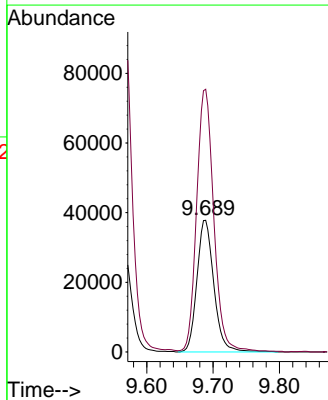
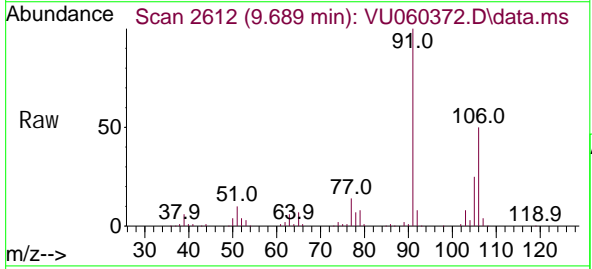
#52  
 Ethyl benzene  
 Concen: 4.803 ug/L  
 RT: 9.563 min Scan# 2573  
 Delta R.T. 0.000 min  
 Lab File: VU060372.D  
 Acq: 09 Aug 2024 13:08

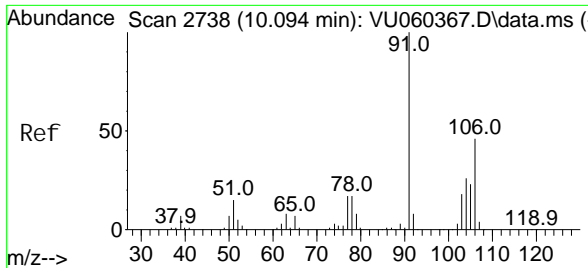
Tgt Ion: 91 Resp: 174303  
 Ion Ratio Lower Upper  
 91 100  
 106 30.9 21.6 40.2



#53  
 m, p-Xyl ene  
 Concen: 4.861 ug/L  
 RT: 9.689 min Scan# 2612  
 Delta R.T. 0.000 min  
 Lab File: VU060372.D  
 Acq: 09 Aug 2024 13:08

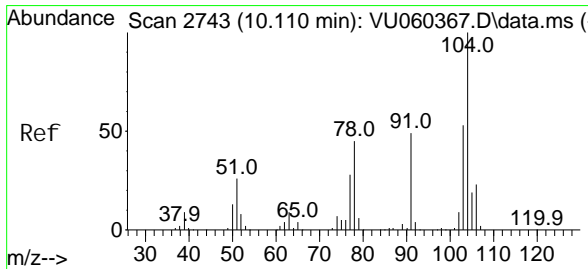
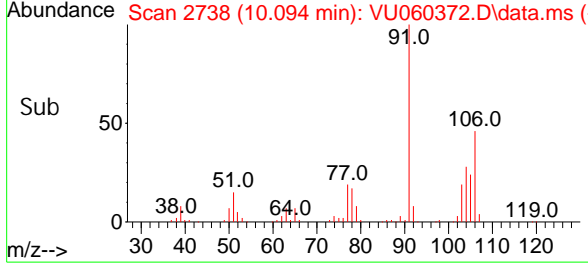
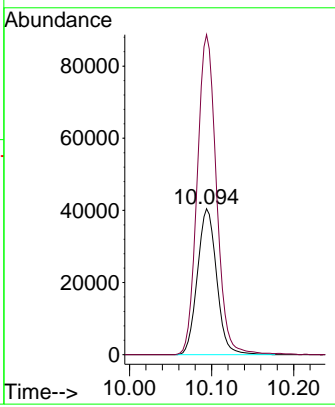
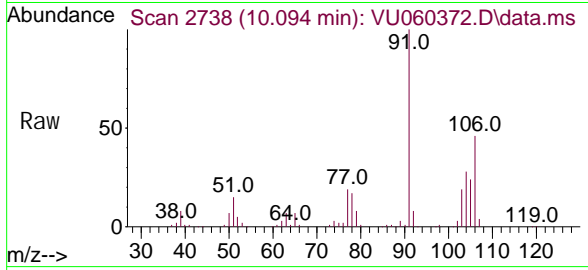
Tgt Ion: 106 Resp: 67046  
 Ion Ratio Lower Upper  
 106 100  
 91 199.5 143.2 266.0





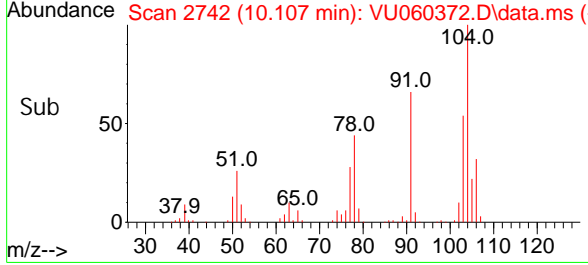
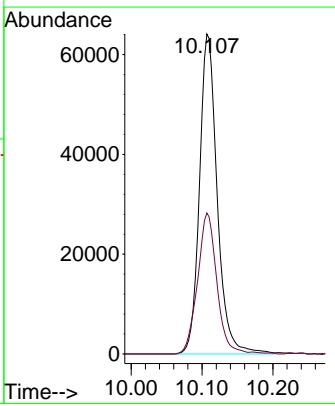
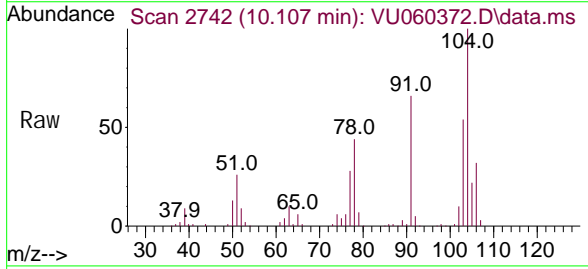
#54  
 o-Xyl ene  
 Concen: 4.999 ug/L  
 RT: 10.094 min Scan# 2738  
 Delta R.T. 0.000 min  
 Lab File: VU060372.D  
 Acq: 09 Aug 2024 13:08

Tgt Ion: 106 Resp: 65982  
 Ion Ratio Lower Upper  
 106 100  
 91 219.2 150.2 279.0

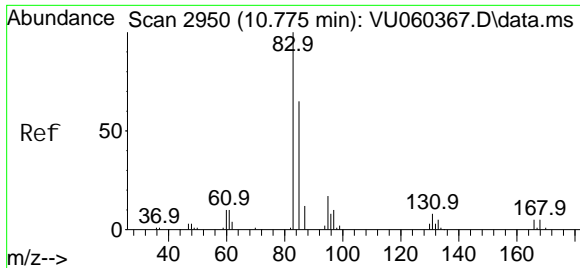


#55  
 Styrene  
 Concen: 4.881 ug/L  
 RT: 10.107 min Scan# 2742  
 Delta R.T. -0.003 min  
 Lab File: VU060372.D  
 Acq: 09 Aug 2024 13:08

Tgt Ion: 104 Resp: 111462  
 Ion Ratio Lower Upper  
 104 100  
 78 44.1 32.1 59.7

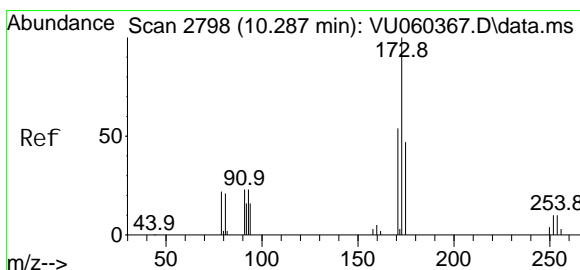
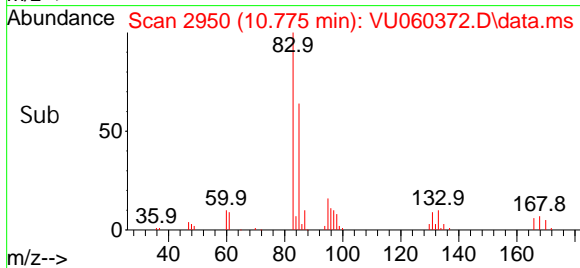
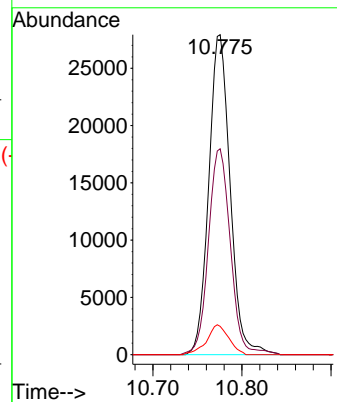
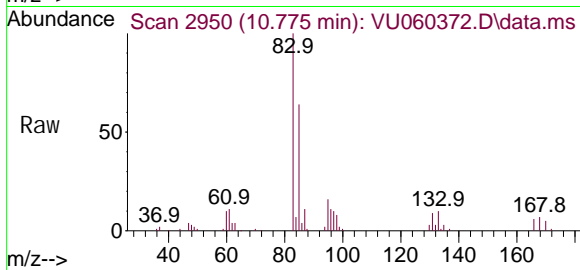






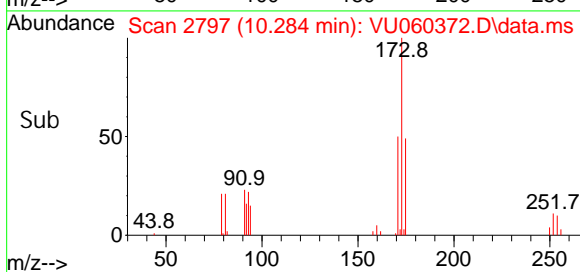
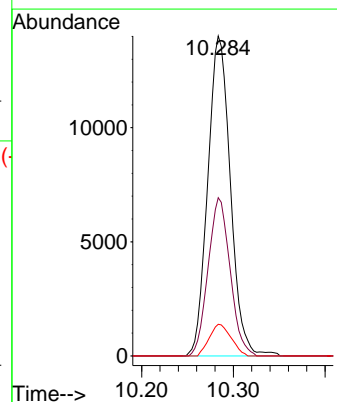
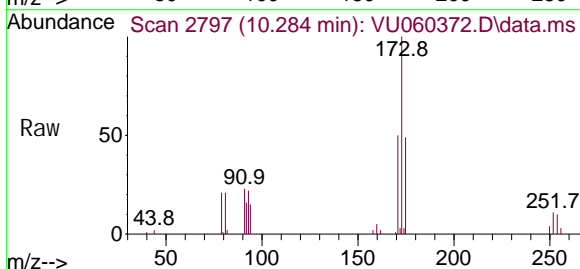
#57  
 1,1,2,2-Tetrachloroethane  
 Concen: 5.510 ug/L  
 RT: 10.775 min Scan# 2950  
 Delta R.T. 0.000 min  
 Lab File: VU060372.D  
 Acq: 09 Aug 2024 13:08

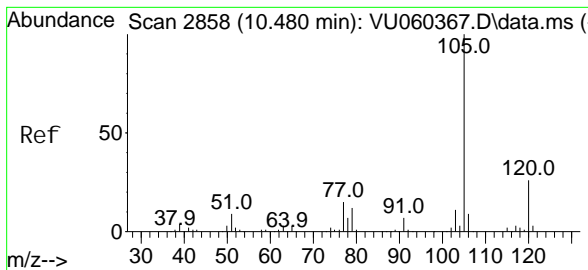
Tgt Ion	Resp	Lower	Upper
83	46551		
83	100		
85	64.4	46.1	85.5
131	8.9	7.6	11.4



#59  
 Bromoform  
 Concen: 5.708 ug/L  
 RT: 10.284 min Scan# 2797  
 Delta R.T. -0.003 min  
 Lab File: VU060372.D  
 Acq: 09 Aug 2024 13:08

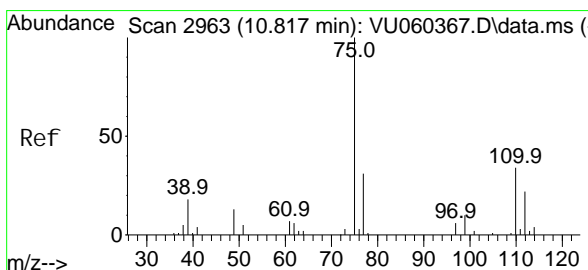
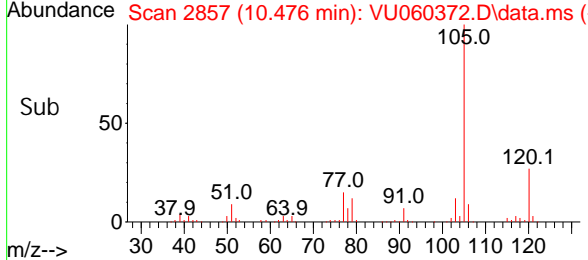
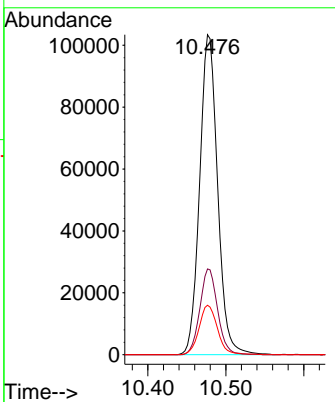
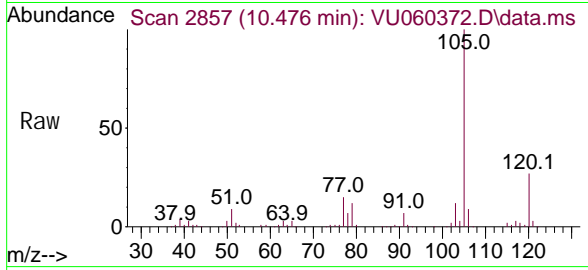
Tgt Ion	Resp	Lower	Upper
173	24083		
173	100		
175	48.0	39.7	59.5
254	9.5	8.2	12.4





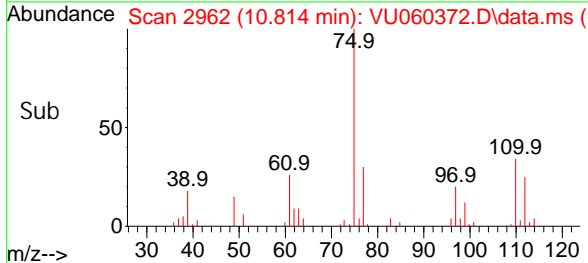
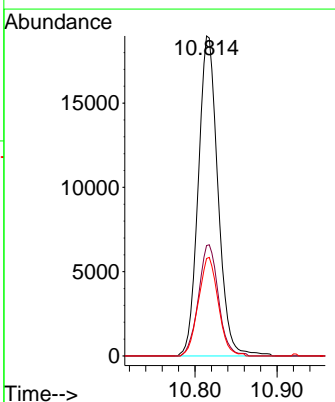
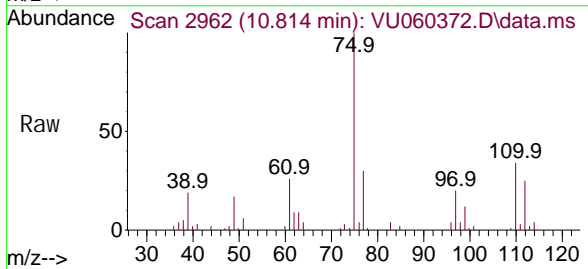
#60  
 Isopropyl benzene  
 Concen: 4.933 ug/L  
 RT: 10.476 min Scan# 2857  
 Delta R.T. -0.003 min  
 Lab File: VU060372.D  
 Acq: 09 Aug 2024 13:08

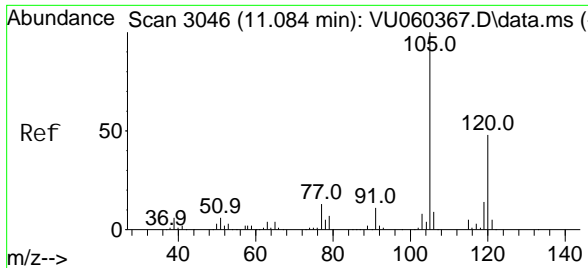
Tgt Ion	Resp	Lower	Upper
105	165475		
120	26.5	21.0	31.6
77	15.8	12.6	19.0



#61  
 1,2,3-Trichloropropane  
 Concen: 5.871 ug/L  
 RT: 10.814 min Scan# 2962  
 Delta R.T. -0.003 min  
 Lab File: VU060372.D  
 Acq: 09 Aug 2024 13:08

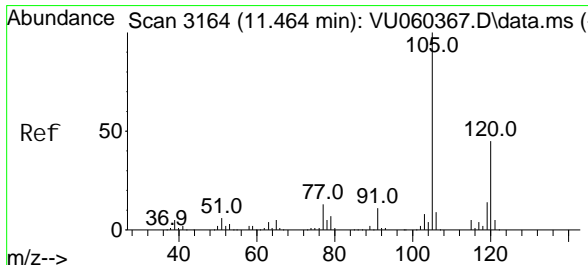
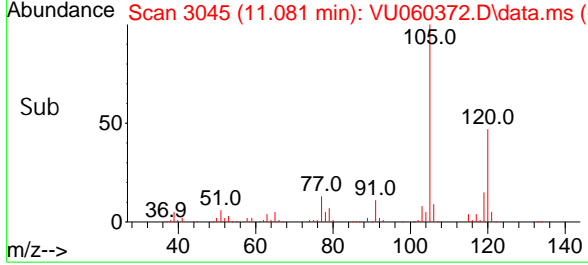
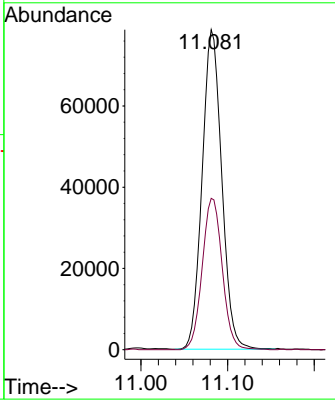
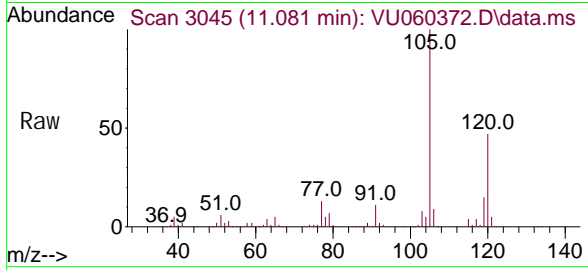
Tgt Ion	Resp	Lower	Upper
75	31579		
110	35.2	29.9	44.9
77	31.1	27.0	40.6





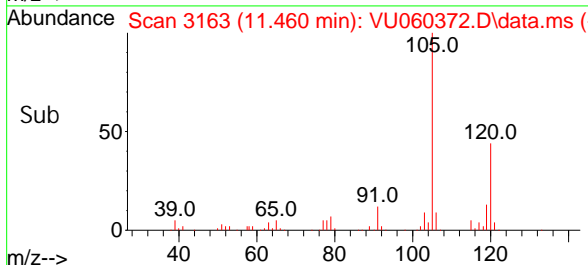
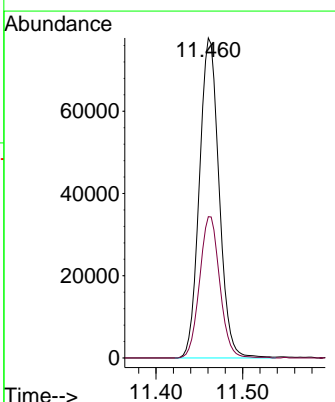
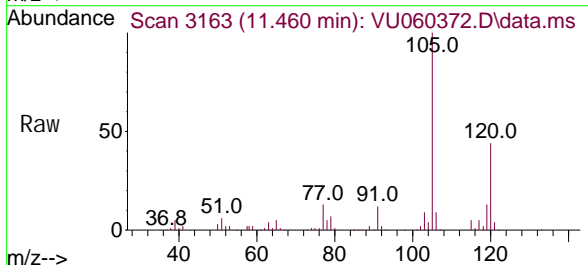
#62  
 1, 3, 5-Tri methyl benzene  
 Concen: 4.790 ug/L  
 RT: 11.081 min Scan# 3045  
 Delta R. T. -0.003 min  
 Lab File: VU060372.D  
 Acq: 09 Aug 2024 13:08

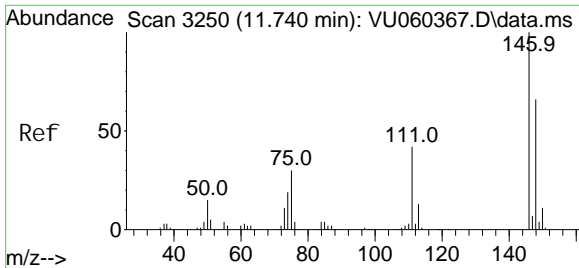
Tgt Ion	Resp	Lower	Upper
105	100		
120	48.3	39.3	58.9



#63  
 1, 2, 4-Tri methyl benzene  
 Concen: 4.820 ug/L  
 RT: 11.460 min Scan# 3163  
 Delta R. T. -0.003 min  
 Lab File: VU060372.D  
 Acq: 09 Aug 2024 13:08

Tgt Ion	Resp	Lower	Upper
105	100		
120	45.3	36.1	54.1

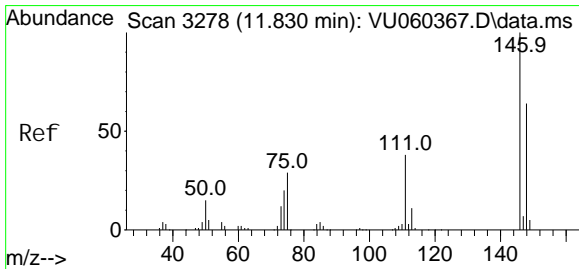
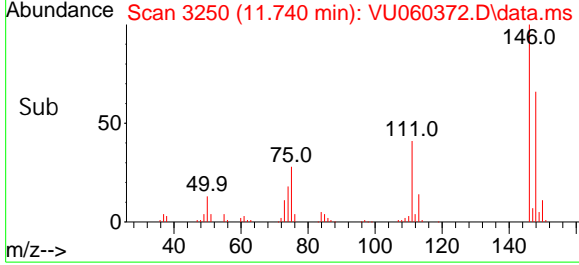
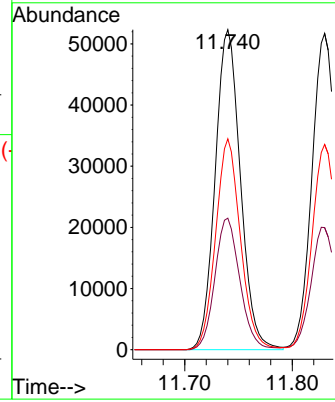
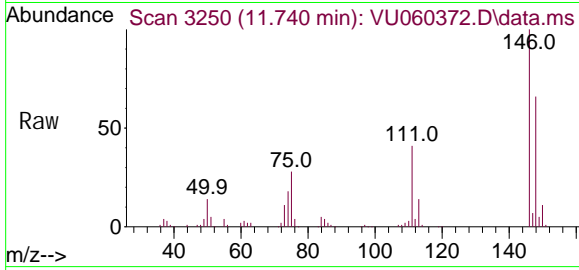




#64  
 1, 3-Di chl orobenzene  
 Concen: 4.992 ug/L  
 RT: 11.740 min Scan# 3250  
 Del ta R. T. 0.000 min  
 Lab File: VU060372.D  
 Acq: 09 Aug 2024 13:08

Tgt Ion: 146 Resp: 85350

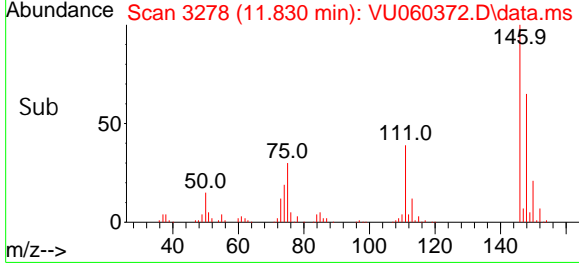
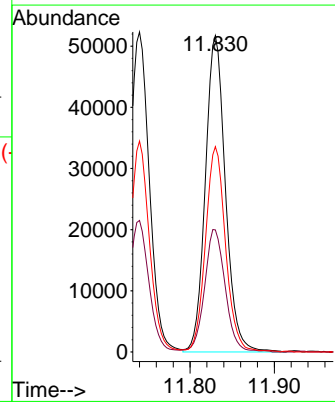
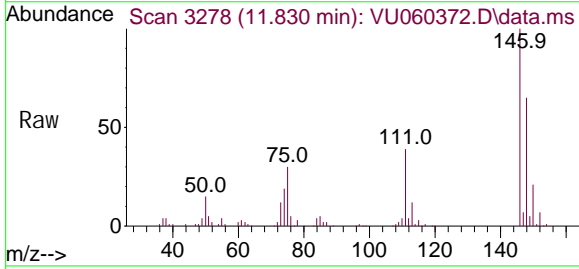
Ion	Ratio	Lower	Upper
146	100		
111	41.1	29.2	54.2
148	65.9	44.9	83.3

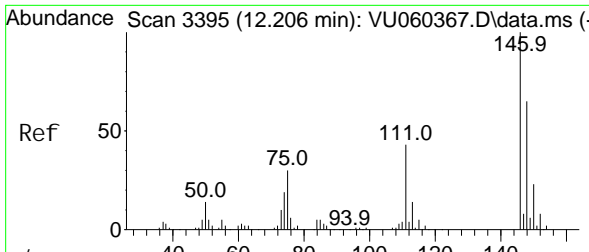


#65  
 1, 4-Di chl orobenzene  
 Concen: 4.992 ug/L  
 RT: 11.830 min Scan# 3278  
 Del ta R. T. 0.000 min  
 Lab File: VU060372.D  
 Acq: 09 Aug 2024 13:08

Tgt Ion: 146 Resp: 86030

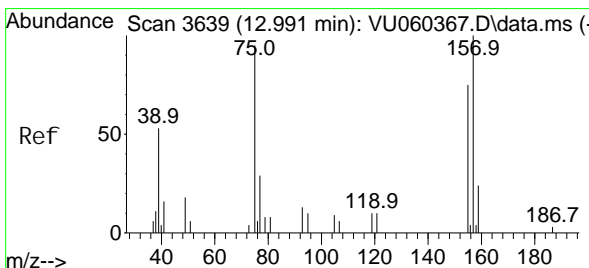
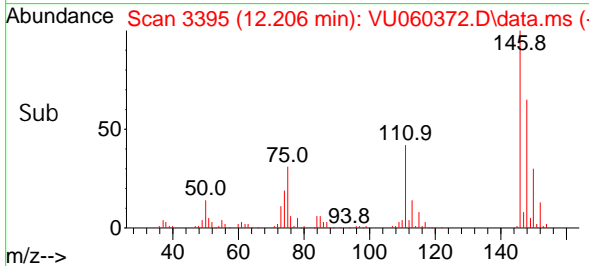
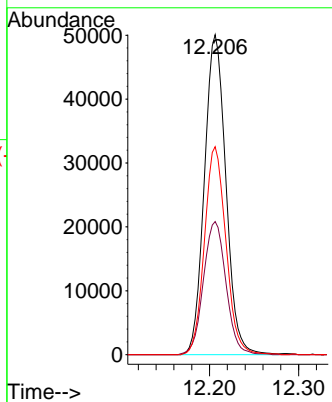
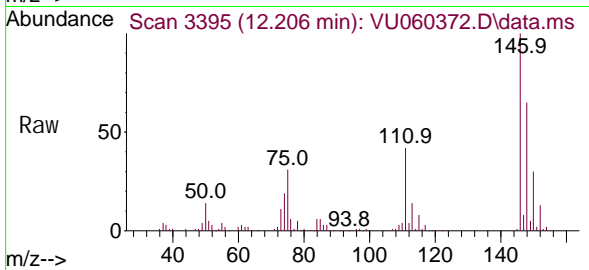
Ion	Ratio	Lower	Upper
146	100		
111	38.6	25.8	48.0
148	64.9	44.0	81.6





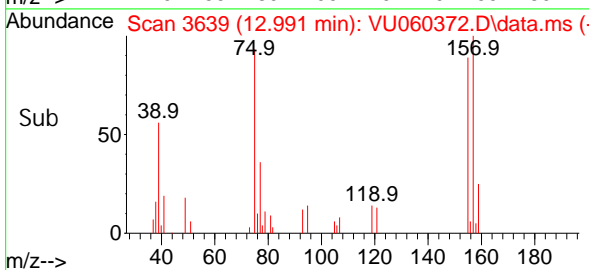
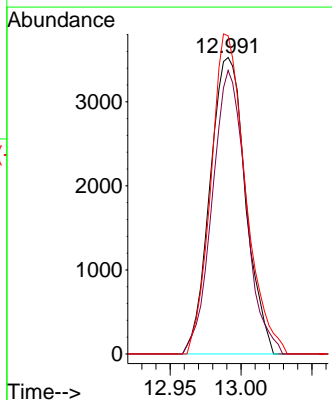
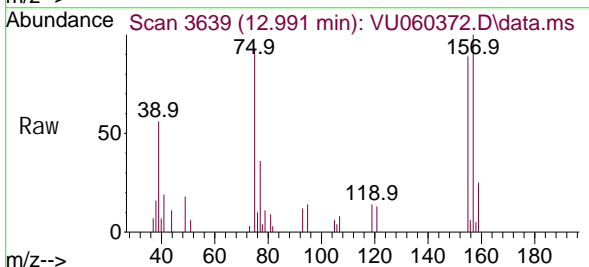
#67  
 1, 2-Di chl orobenzene  
 Concen: 5.191 ug/L  
 RT: 12.206 min Scan# 3395  
 Delta R.T. 0.000 min  
 Lab File: VU060372.D  
 Acq: 09 Aug 2024 13:08

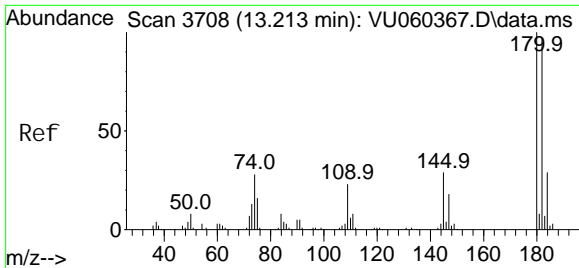
Tgt Ion	Resp	Lower	Upper
146	100		
111	41.6	32.0	48.0
148	65.0	51.8	77.8



#68  
 1, 2-Di bromo-3- chl oropropane  
 Concen: 6.087 ug/L  
 RT: 12.991 min Scan# 3639  
 Delta R.T. 0.000 min  
 Lab File: VU060372.D  
 Acq: 09 Aug 2024 13:08

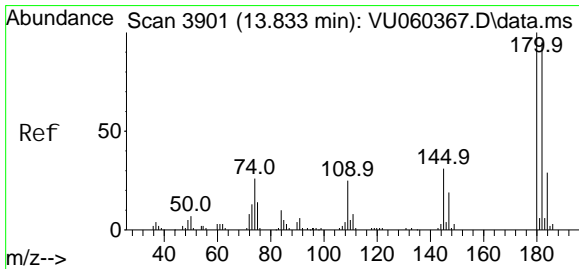
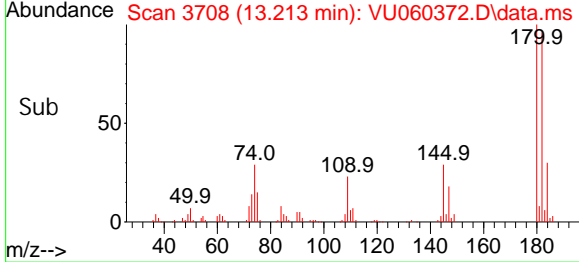
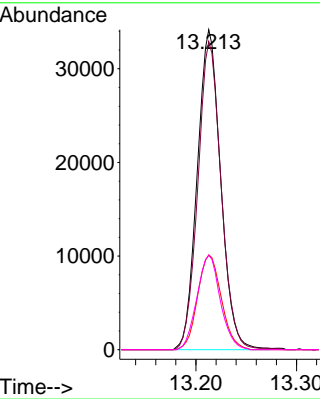
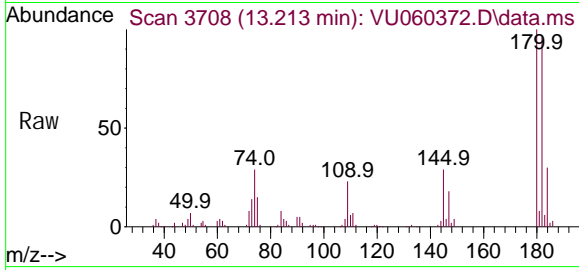
Tgt Ion	Resp	Lower	Upper
75	100		
155	95.6	64.3	96.5
157	107.3	88.0	132.0





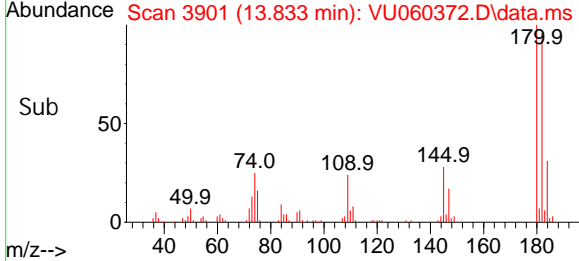
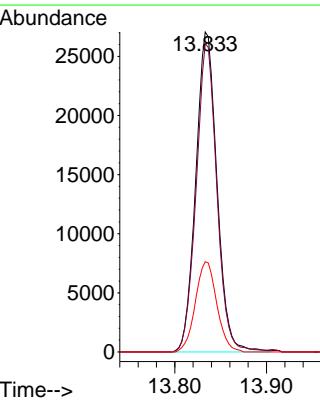
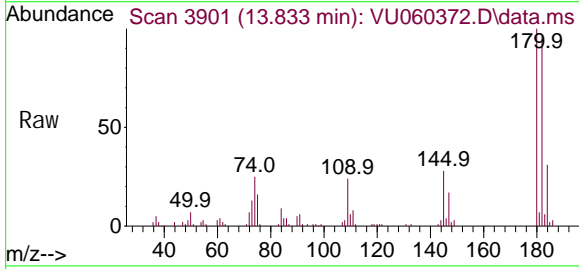
#69  
 1, 3, 5-Tri chlorobenzene  
 Concen: 4.279 ug/L  
 RT: 13.213 min Scan# 3708  
 Delta R.T. 0.000 min  
 Lab File: VU060372.D  
 Acq: 09 Aug 2024 13:08

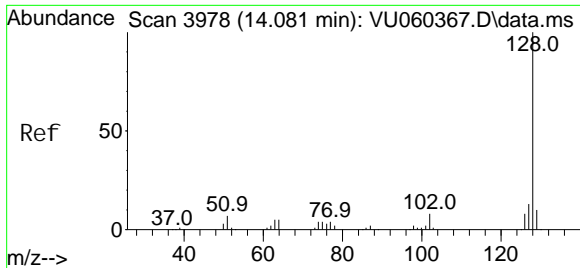
Tgt Ion	Resp	Lower	Upper
180	100		
182	95.2	76.0	114.0
184	30.0	23.8	35.8
145	29.4	23.1	34.7



#70  
 1, 2, 4-tri chlorobenzene  
 Concen: 4.292 ug/L  
 RT: 13.833 min Scan# 3901  
 Delta R.T. 0.000 min  
 Lab File: VU060372.D  
 Acq: 09 Aug 2024 13:08

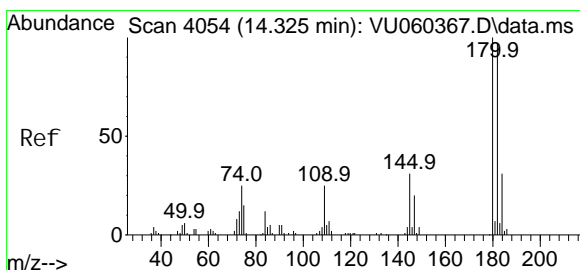
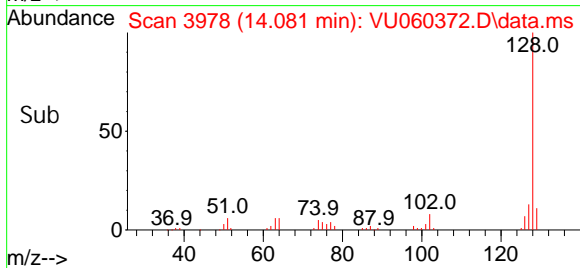
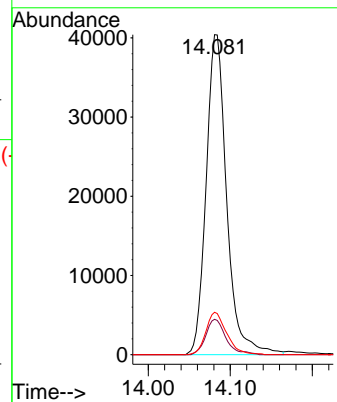
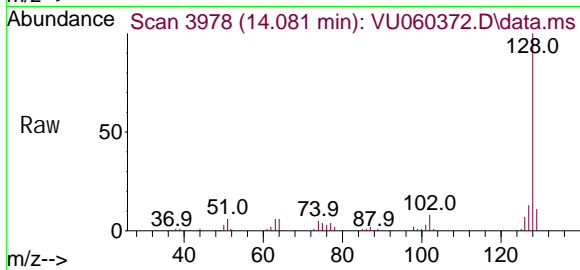
Tgt Ion	Resp	Lower	Upper
180	100		
182	94.1	76.0	114.0
145	28.5	23.7	35.5





#71  
 Naphthalene  
 Concen: 4.875 ug/L  
 RT: 14.081 min Scan# 3978  
 Delta R.T. 0.000 min  
 Lab File: VU060372.D  
 Acq: 09 Aug 2024 13:08

Tgt Ion	Resp	Lower	Upper
128	100		
129	10.8	8.6	12.8
127	13.4	10.6	16.0



#72  
 1,2,3-Trichlorobenzene  
 Concen: 4.505 ug/L  
 RT: 14.322 min Scan# 4053  
 Delta R.T. -0.003 min  
 Lab File: VU060372.D  
 Acq: 09 Aug 2024 13:08

Tgt Ion	Resp	Lower	Upper
180	100		
182	98.3	75.7	113.5
145	32.5	23.7	35.5

