

Data Path : Z:\voasrv\HPCHEM1\MSVOA_U\Data\VU080924\
 Data File : VU060394.D
 Acq On : 10 Aug 2024 00:36
 Operator : MD/SY
 Sample : P3540-02
 Misc : 25.0mL/MSVOA_U/WATER
 ALS Vial : 34 Sample Multiplier: 1

Quant Time: Aug 10 06:02:56 2024
 Quant Method : Z:\voasrv\HPCHEM1\MSVOA_U\Method\SFAMUTR080824WMA.M
 Quant Title : TRACE VOA SFAM1.0
 QLast Update : Sat Aug 10 05:58:50 2024
 Response via : Initial Calibration

Compound	R.T.	QI on	Response	Conc	Units	Dev(Min)
Internal Standards						
1) 1,4-Difluorobenzene	6.242	114	103346	5.000	ug/L	0.00
28) Chlorobenzene-d5	9.412	117	110002	5.000	ug/L	0.00
58) 1,4-Dichlorobenzene-d4	11.808	152	53694	5.000	ug/L	0.00
System Monitoring Compounds						
4) Vinyl chloride-d3	1.596	65	33020	4.070	ug/L	0.00
Spike Amount	5.000	Range	40 - 130	Recovery	=	81.400%
7) Chloroethane-d5	1.911	69	34028	4.652	ug/L	0.00
Spike Amount	5.000	Range	65 - 130	Recovery	=	93.000%
11) 1,1-Dichloroethene-d2	2.560	65	14525	4.207	ug/L	0.00
Spike Amount	5.000	Range	60 - 125	Recovery	=	84.200%
20) 2-Butanone-d5	4.634	46	97316	56.526	ug/L	0.00
Spike Amount	50.000	Range	40 - 130	Recovery	=	113.060%
24) Chloroform-d	5.055	84	81214	5.056	ug/L	0.00
Spike Amount	5.000	Range	70 - 125	Recovery	=	101.200%
26) 1,2-Dichloroethane-d4	5.695	65	38878	5.219	ug/L	0.00
Spike Amount	5.000	Range	70 - 130	Recovery	=	104.400%
32) Benzene-d6	5.721	84	150025	4.522	ug/L	0.00
Spike Amount	5.000	Range	70 - 125	Recovery	=	90.400%
36) 1,2-Dichloropropane-d6	6.686	67	52231	5.076	ug/L	0.00
Spike Amount	5.000	Range	60 - 140	Recovery	=	101.600%
41) Toluene-d8	7.895	98	120636	4.073	ug/L	0.00
Spike Amount	5.000	Range	70 - 130	Recovery	=	81.400%
43) trans-1,3-Dichloropropene	8.174	79	14554	4.375	ug/L	0.00
Spike Amount	5.000	Range	55 - 130	Recovery	=	87.400%
46) 2-Hexanone-d5	8.631	63	77078	52.209	ug/L	0.00
Spike Amount	50.000	Range	45 - 130	Recovery	=	104.420%
56) 1,1,2,2-Tetrachloroethene	10.750	84	42627	5.049	ug/L	0.00
Spike Amount	5.000	Range	65 - 120	Recovery	=	101.000%
66) 1,2-Dichlorobenzene-d4	12.187	152	51925	5.250	ug/L	0.00
Spike Amount	5.000	Range	80 - 120	Recovery	=	105.000%
Target Compounds						
5) Vinyl chloride	1.602	62	3890	0.479	ug/L #	81
10) 1,1,2-Trichloro-1,2,2-trifluoroethane	2.573	101	19842	2.645	ug/L	97
12) 1,1-Dichloroethene	2.573	96	99257	14.566	ug/L #	73
15) Methyl Acetate	3.036	43	2789	1.145	ug/L #	72
16) Methylene chloride	3.036	84	727304	75.082	ug/L	97
17) Methyl tert-butyl Ether	3.361	73	3889	0.242	ug/L #	92
18) trans-1,2-Dichloroethene	3.351	96	2291	0.343	ug/L	92
19) 1,1-Dichloroethane	3.863	63	33703	2.442	ug/L	98
22) cis-1,2-Dichloroethene	4.657	96	318387	39.454	ug/L	97
25) Chloroform	5.081	83	87648	5.838	ug/L	99
29) 1,1,1-Trichloroethane	5.309	97	9578	0.795	ug/L	90
31) Carbon tetrachloride	5.515	117	18606	1.763	ug/L	96
34) Trichloroethene	6.541	95	10812769	1304.279	ug/L	96
35) Methyl cyclohexane	6.689	83	12972	1.198	ug/L #	22
37) 1,2-Dichloropropane	6.686	63	5146	0.597	ug/L #	90
38) Bromodichloromethane	7.100	83	1801	0.169	ug/L	90
42) Toluene	7.968	91	22300	0.666	ug/L	98
45) 1,1,2-Trichloroethane	8.396	97	2075	0.314	ug/L	90
47) Tetrachloroethene	8.547	164	269100	41.498	ug/L	98

Data Path : Z:\voasrv\HPCHEM1\MSVOA_U\Data\VU080924\
 Data File : VU060394.D
 Acq On : 10 Aug 2024 00:36
 Operator : MD/SY
 Sample : P3540-02
 Misc : 25.0mL/MSVOA_U/WATER
 ALS Vial : 34 Sample Multiplier: 1

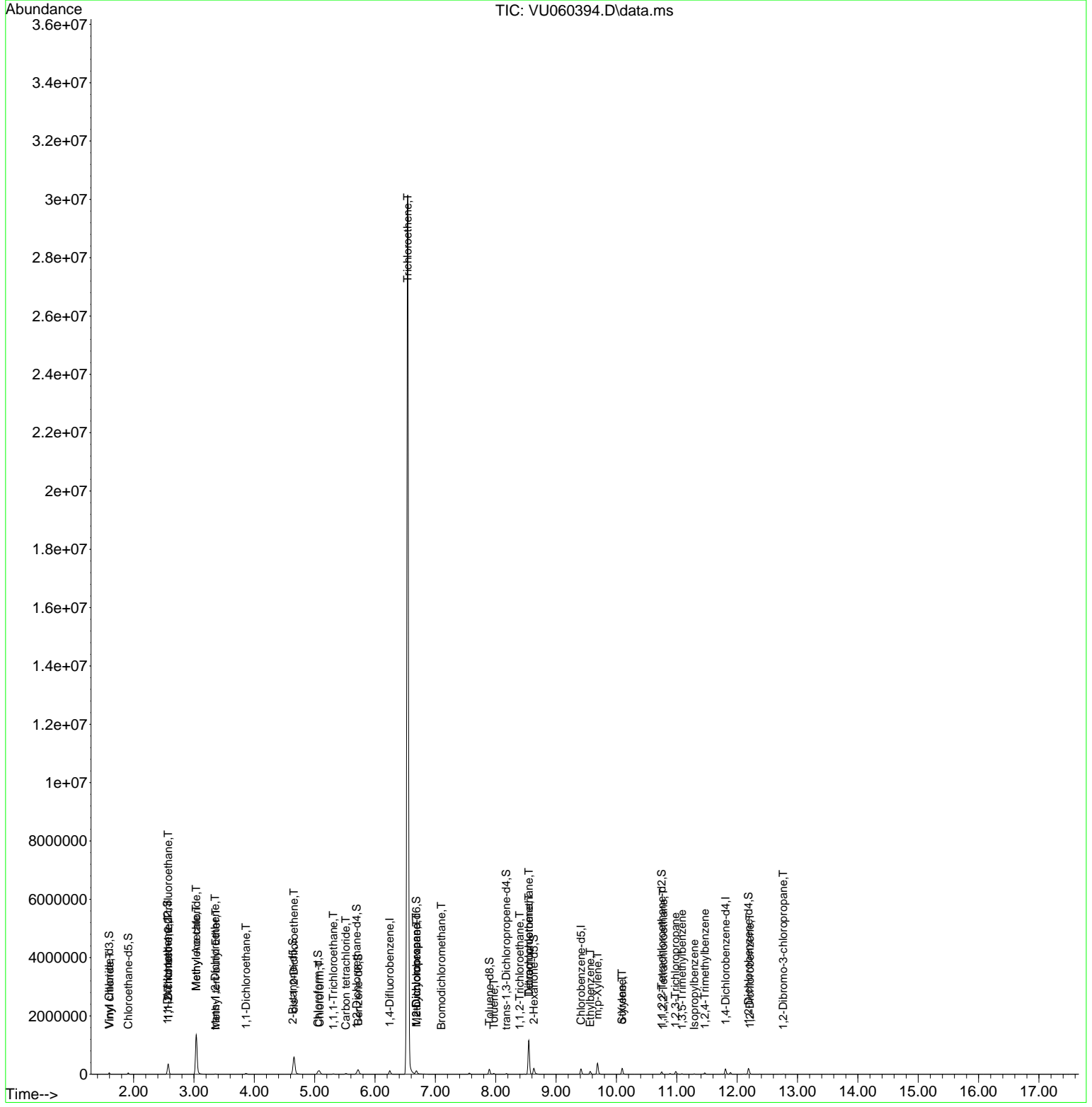
Quant Time: Aug 10 06:02:56 2024
 Quant Method : Z:\voasrv\HPCHEM1\MSVOA_U\Method\SFAMUTR080824WMA.M
 Quant Title : TRACE VOA SFAM1.0
 QLast Update : Sat Aug 10 05:58:50 2024
 Response via : Initial Calibration

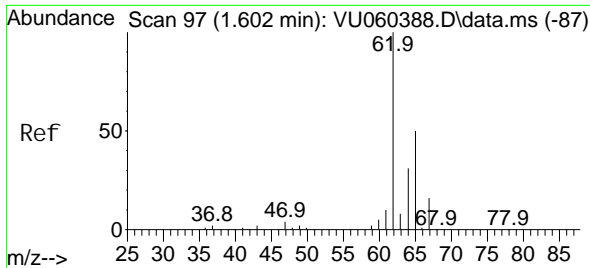
Compound	R. T.	QI on	Response	Conc	Units	Dev(Min)
49) Di bromochloromethane	8.547	129	254704	36.285	ug/L #	12
52) Ethyl benzene	9.563	91	72446	2.055	ug/L	99
53) m, p-Xylene	9.685	106	113831	8.495	ug/L	99
54) o-Xylene	10.094	106	57098	4.453	ug/L	98
55) Styrene	10.094	104	4421	0.199	ug/L #	1
57) 1, 1, 2, 2-Tetrachloroethane	10.775	83	799	0.097	ug/L #	79
60) Isopropyl benzene	11.287	105	8642	0.267	ug/L	92
61) 1, 2, 3-Tri chloropropane	10.978	75	1421	0.273	ug/L #	1
62) 1, 3, 5-Tri methyl benzene	11.084	105	8875	0.356	ug/L	93
63) 1, 2, 4-Tri methyl benzene	11.464	105	27234	1.107	ug/L	98
67) 1, 2-Di chlorobenzene	12.209	146	11486	0.736	ug/L	99
68) 1, 2-Di bromo-3-chloropr...	12.759	75	222	0.228	ug/L #	1

(#) = qualifier out of range (m) = manual integration (+) = signals summed

Data Path : Z:\voasrv\HPCHEM1\MSVOA_U\Data\VU080924\
 Data File : VU060394.D
 Acq On : 10 Aug 2024 00:36
 Operator : MD/SY
 Sample : P3540-02
 Misc : 25.0mL/MSVOA_U/WATER
 ALS Vial : 34 Sample Multiplier: 1

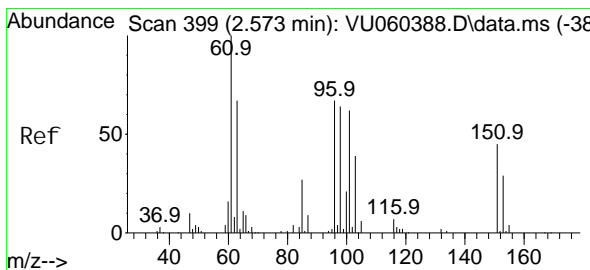
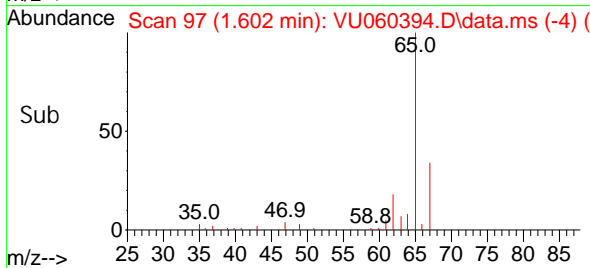
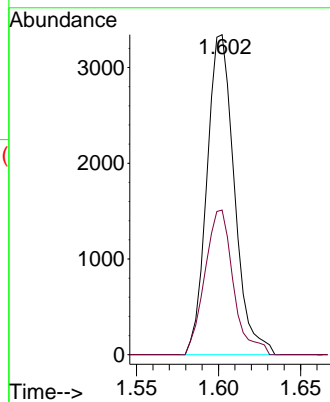
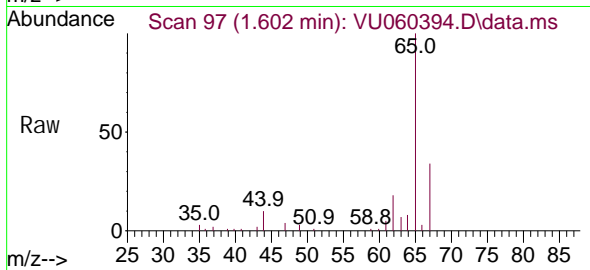
Quant Time: Aug 10 06:02:56 2024
 Quant Method : Z:\voasrv\HPCHEM1\MSVOA_U\Method\SFAMUTR080824WMA.M
 Quant Title : TRACE VOA SFAM1.0
 QLast Update : Sat Aug 10 05:58:50 2024
 Response via : Initial Calibration





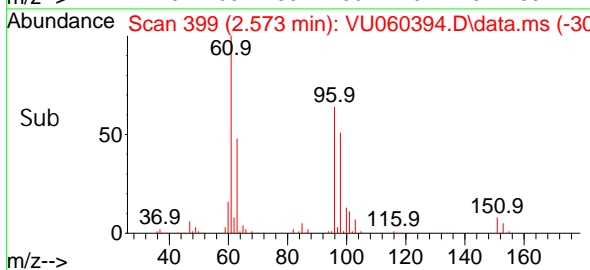
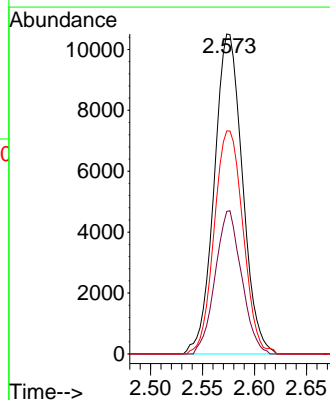
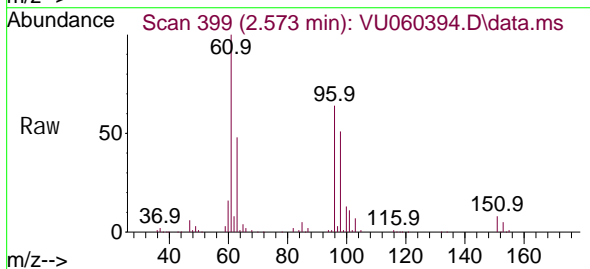
#5
 Vinyl chloride
 Concen: 0.479 ug/L
 RT: 1.602 min Scan# 97
 Delta R.T. 0.000 min
 Lab File: VU060394.D
 Acq: 10 Aug 2024 00:36

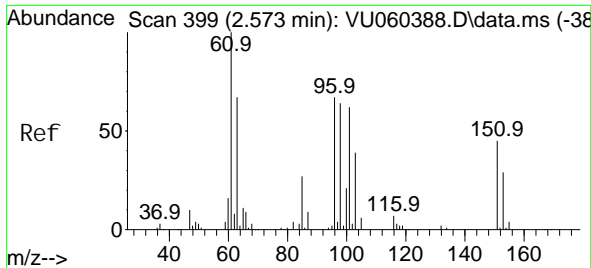
Tgt Ion: 62 Resp: 3890
 Ion Ratio Lower Upper
 62 100
 64 45.2 24.1 44.7#



#10
 1,1,2-Trichloro-1,2,2-trifluoroethane
 Concen: 2.645 ug/L
 RT: 2.573 min Scan# 399
 Delta R.T. 0.000 min
 Lab File: VU060394.D
 Acq: 10 Aug 2024 00:36

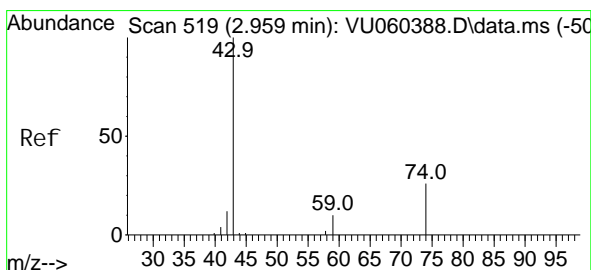
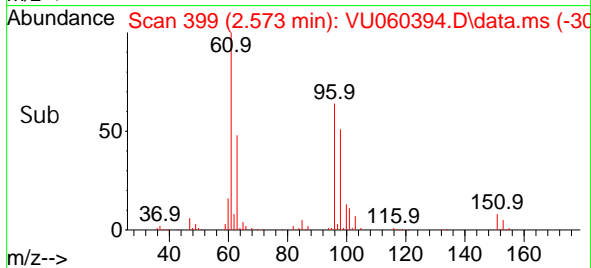
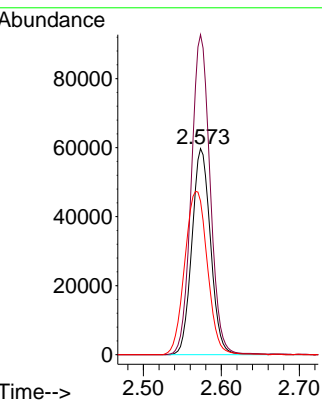
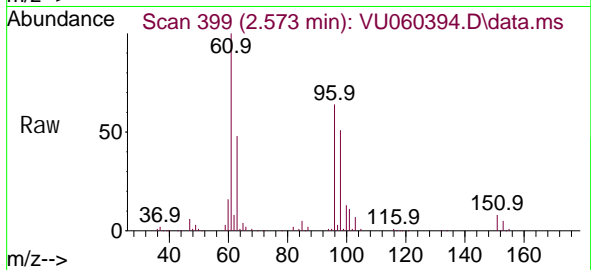
Tgt Ion: 101 Resp: 19842
 Ion Ratio Lower Upper
 101 100
 85 41.9 33.5 50.3
 151 71.2 59.7 89.5





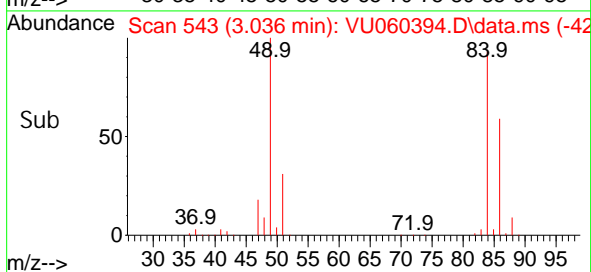
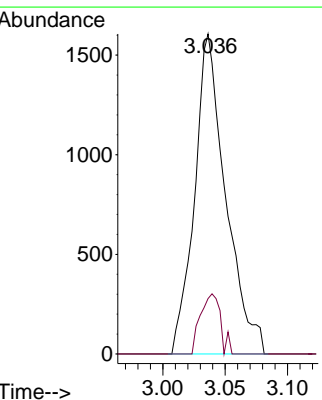
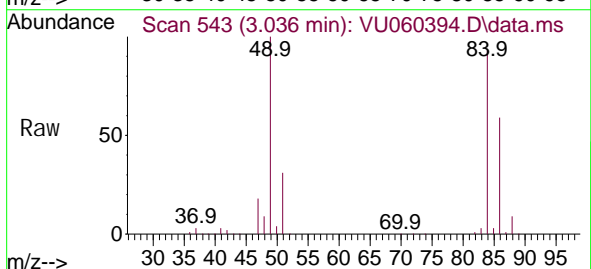
#12
 1,1-Dichloroethene
 Concen: 14.566 ug/L
 RT: 2.573 min Scan# 399
 Delta R.T. 0.000 min
 Lab File: VU060394.D
 Acq: 10 Aug 2024 00:36

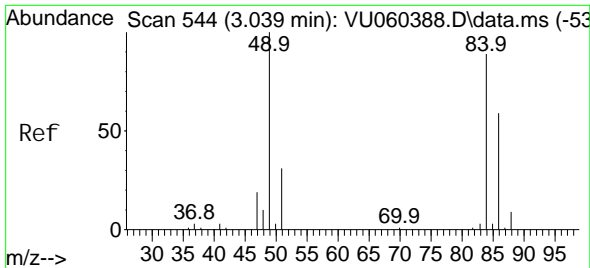
Tgt Ion: 96 Resp: 99257
 Ion Ratio Lower Upper
 96 100
 61 155.2 114.4 212.4
 63 74.5 96.0 178.4#



#15
 Methyl Acetate
 Concen: 1.145 ug/L
 RT: 3.036 min Scan# 543
 Delta R.T. 0.077 min
 Lab File: VU060394.D
 Acq: 10 Aug 2024 00:36

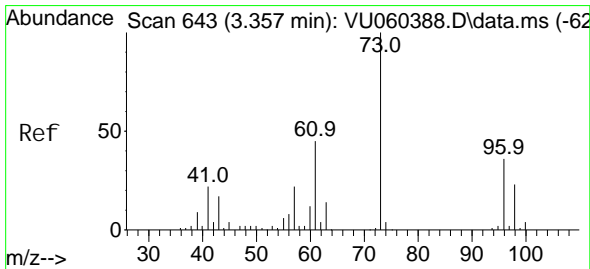
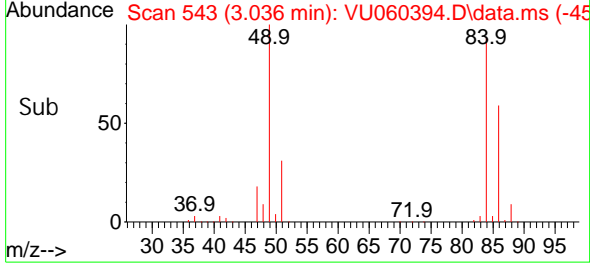
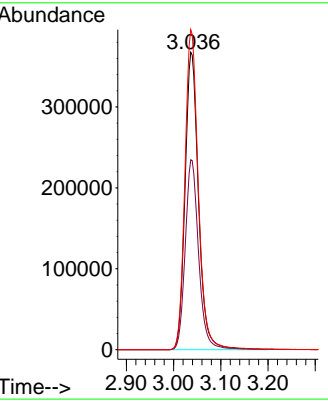
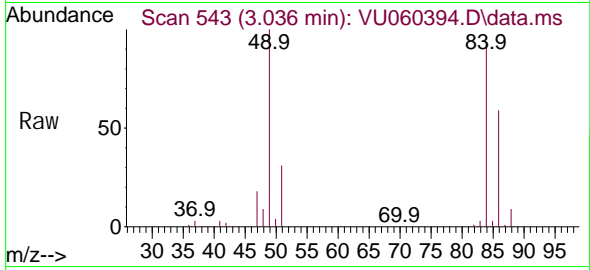
Tgt Ion: 43 Resp: 2789
 Ion Ratio Lower Upper
 43 100
 74 12.1 21.3 31.9#





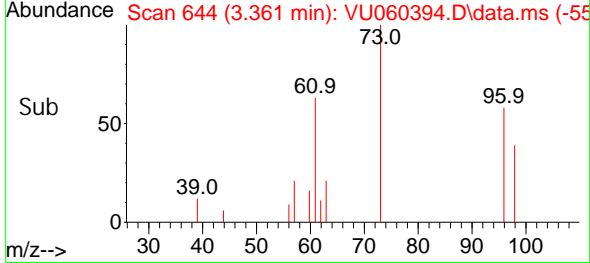
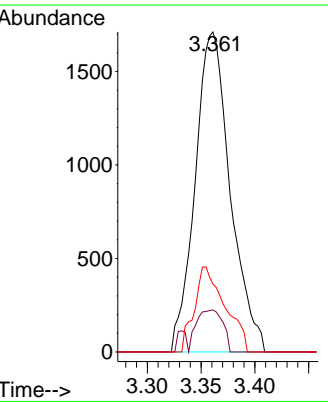
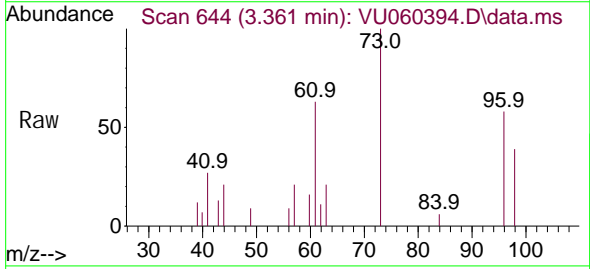
#16
 Methylene chloride
 Concen: 75.082 ug/L
 RT: 3.036 min Scan# 543
 Delta R.T. -0.003 min
 Lab File: VU060394.D
 Acq: 10 Aug 2024 00:36

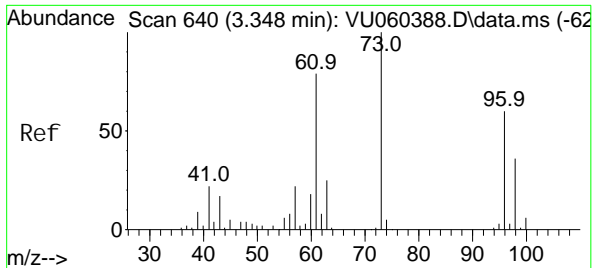
Tgt Ion	Resp	Lower	Upper
84	727304		
84	100		
86	63.9	47.1	87.5
49	107.6	73.9	137.3



#17
 Methyl tert-butyl Ether
 Concen: 0.242 ug/L
 RT: 3.361 min Scan# 644
 Delta R.T. 0.004 min
 Lab File: VU060394.D
 Acq: 10 Aug 2024 00:36

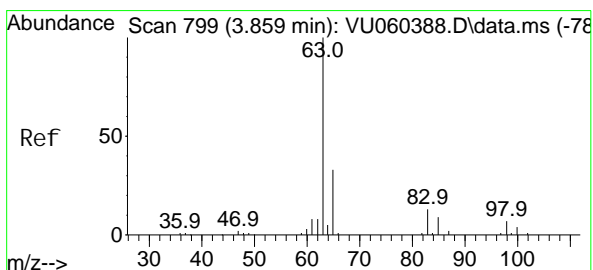
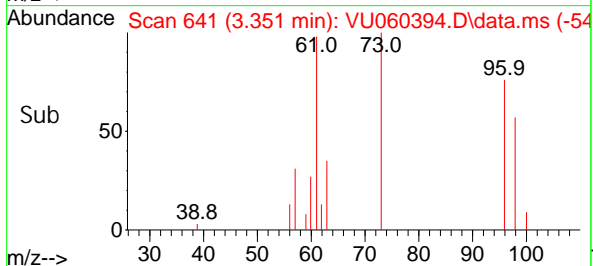
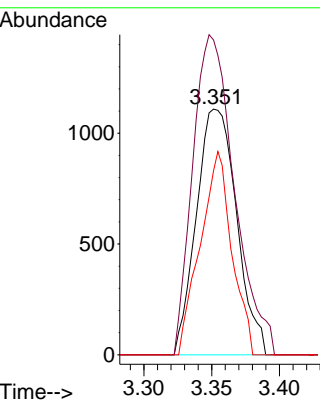
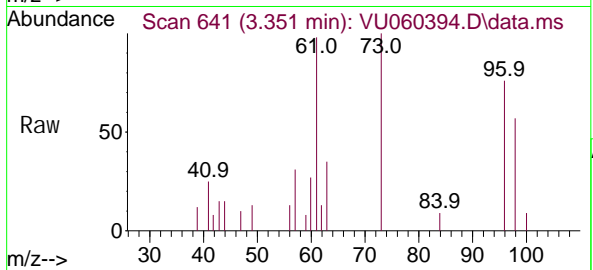
Tgt Ion	Resp	Lower	Upper
73	3889		
73	100		
43	9.9	12.8	19.2#
57	23.2	17.5	26.3





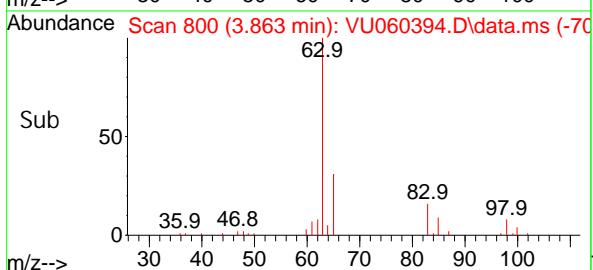
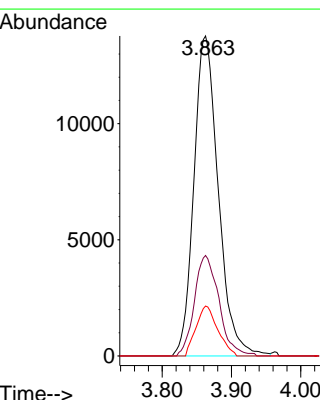
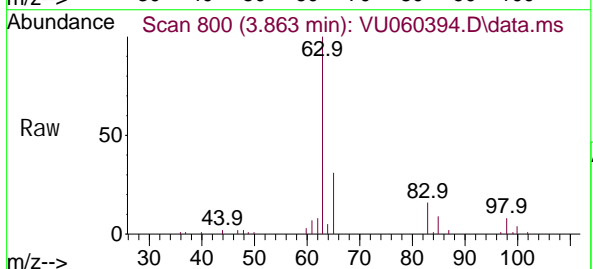
#18
 trans-1, 2-Di chloroethene
 Concen: 0.343 ug/L
 RT: 3.351 min Scan# 641
 Delta R.T. 0.004 min
 Lab File: VU060394.D
 Acq: 10 Aug 2024 00:36

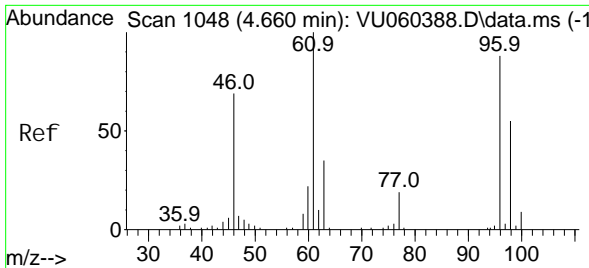
Tgt Ion	Resp	Lower	Upper
96	2291		
96	100		
61	128.1	93.7	174.1
98	74.9	44.7	82.9



#19
 1, 1-Di chloroethane
 Concen: 2.442 ug/L
 RT: 3.863 min Scan# 800
 Delta R.T. 0.003 min
 Lab File: VU060394.D
 Acq: 10 Aug 2024 00:36

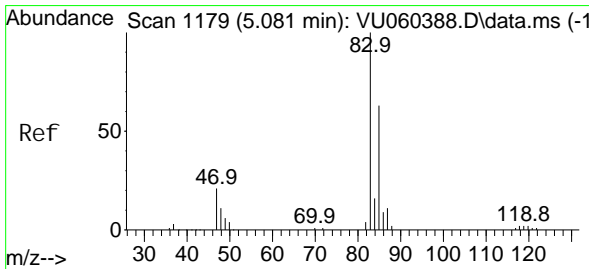
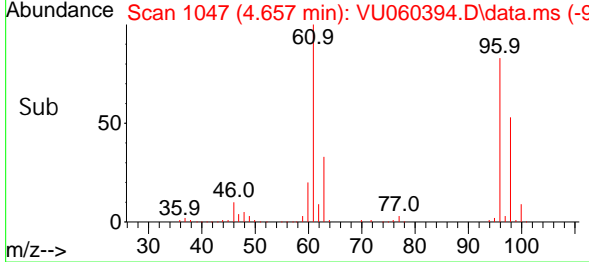
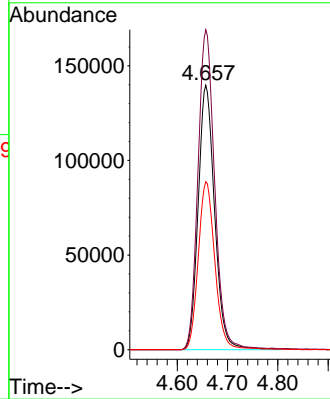
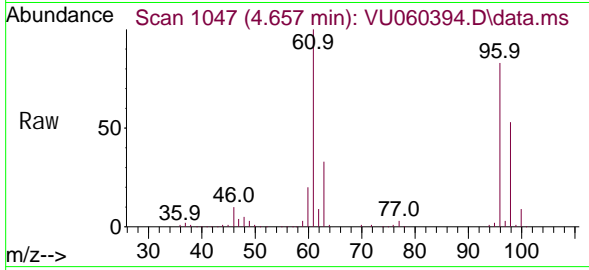
Tgt Ion	Resp	Lower	Upper
63	33703		
63	100		
65	31.4	22.2	41.2
83	15.6	9.1	16.9





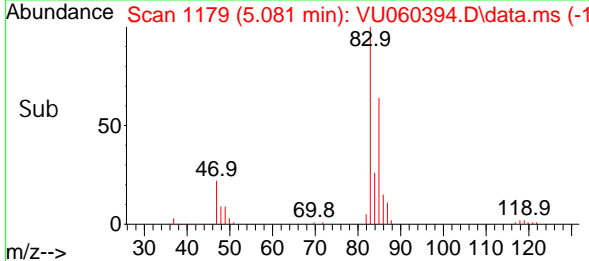
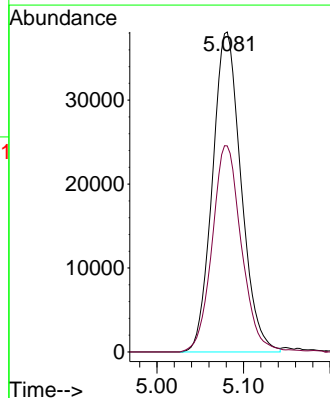
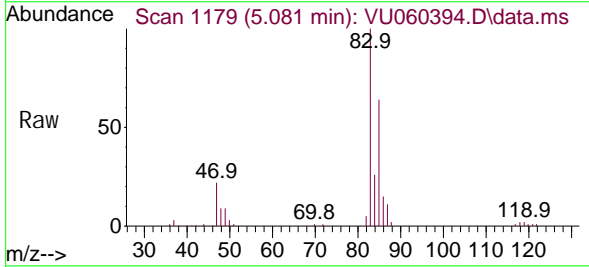
#22
 ci s-1, 2-Di chl oroethene
 Concen: 39.454 ug/L
 RT: 4.657 min Scan# 1047
 Delta R.T. -0.003 min
 Lab File: VU060394.D
 Acq: 10 Aug 2024 00:36

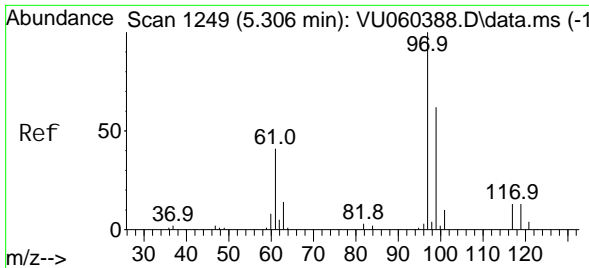
Tgt Ion	Resp	Lower	Upper
96	318387		
96	100		
61	121.0	81.5	151.5
98	63.6	43.5	80.7



#25
 Chloroform
 Concen: 5.838 ug/L
 RT: 5.081 min Scan# 1179
 Delta R.T. 0.000 min
 Lab File: VU060394.D
 Acq: 10 Aug 2024 00:36

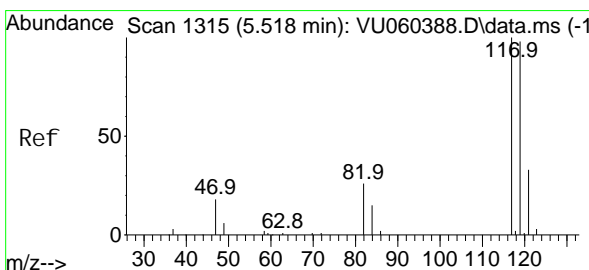
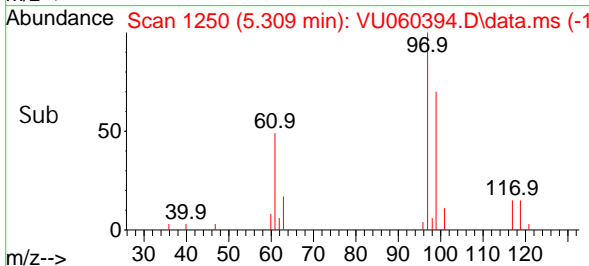
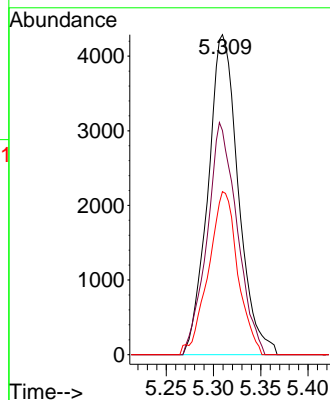
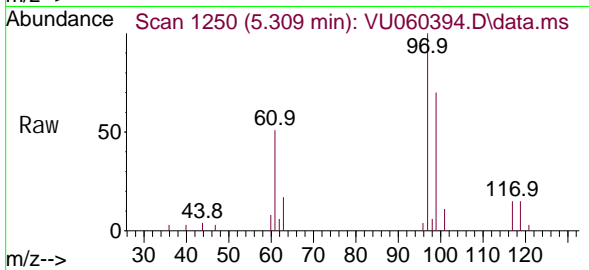
Tgt Ion	Resp	Lower	Upper
83	87648		
83	100		
85	64.4	45.6	84.6





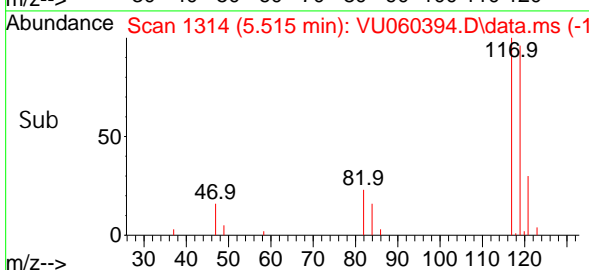
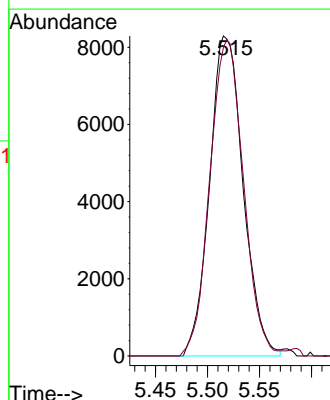
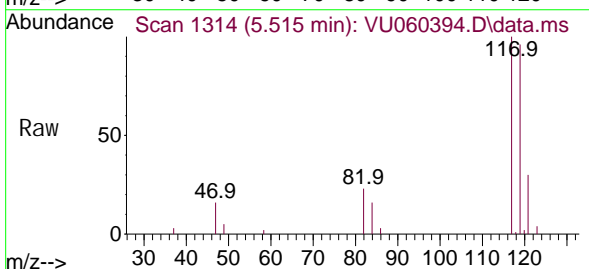
#29
 1,1,1-Trichloroethane
 Concen: 0.795 ug/L
 RT: 5.309 min Scan# 1250
 Delta R.T. 0.003 min
 Lab File: VU060394.D
 Acq: 10 Aug 2024 00:36

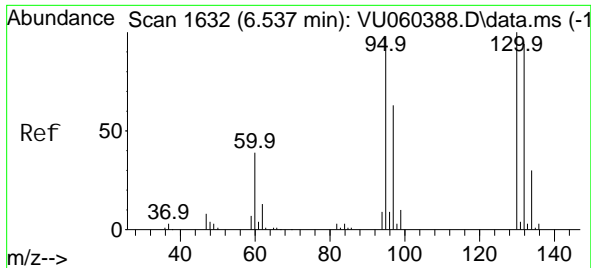
Tgt Ion	Resp	Lower	Upper
97	9578		
97	100		
99	71.5	51.4	77.2
61	49.2	33.0	49.6



#31
 Carbon tetrachloride
 Concen: 1.763 ug/L
 RT: 5.515 min Scan# 1314
 Delta R.T. -0.003 min
 Lab File: VU060394.D
 Acq: 10 Aug 2024 00:36

Tgt Ion	Resp	Lower	Upper
117	18606		
117	100		
119	98.9	75.8	113.8

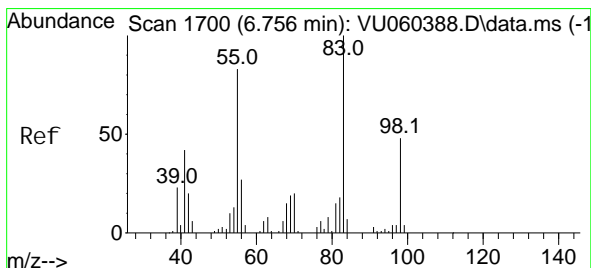
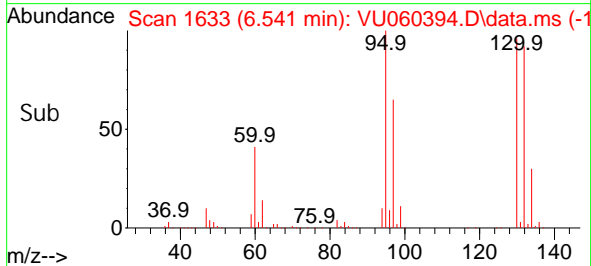
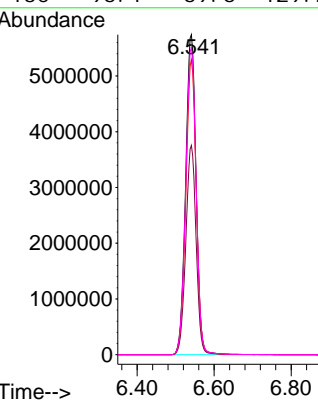
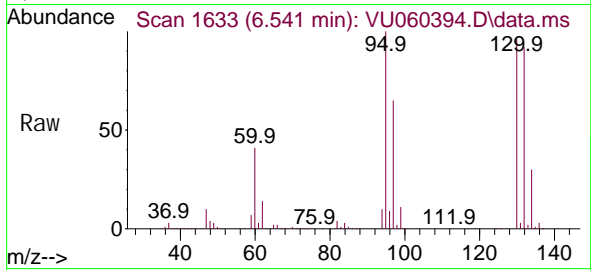




#34
 Trichloroethene
 Concen: 1304.279 ug/L
 RT: 6.541 min Scan# 1633
 Delta R.T. 0.003 min
 Lab File: VU060394.D
 Acq: 10 Aug 2024 00:36

Tgt Ion: 95 Resp: 10812769

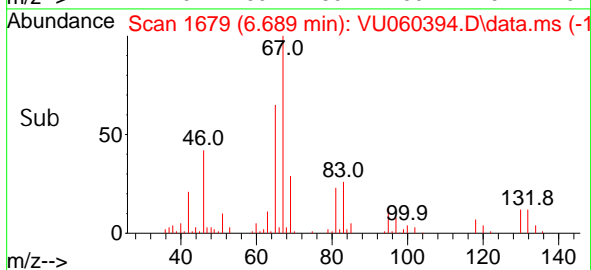
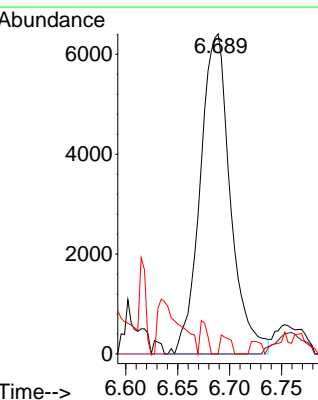
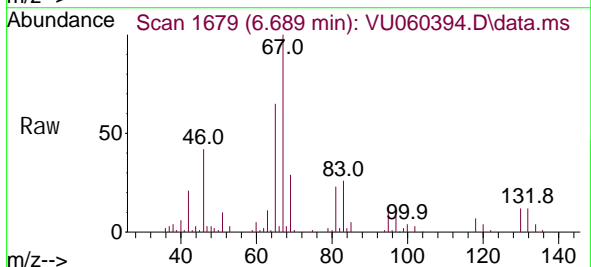
Ion	Ratio	Lower	Upper
95	100		
97	65.4	43.6	81.0
132	92.2	67.1	124.5
130	96.1	69.6	129.2

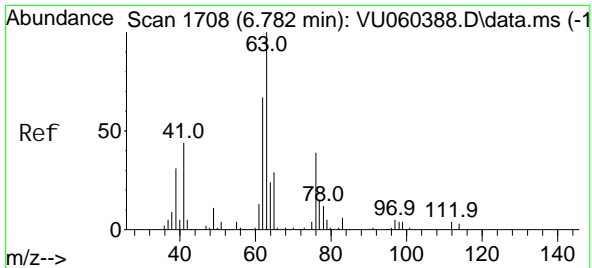


#35
 Methyl cycl ohexane
 Concen: 1.198 ug/L
 RT: 6.689 min Scan# 1679
 Delta R.T. -0.067 min
 Lab File: VU060394.D
 Acq: 10 Aug 2024 00:36

Tgt Ion: 83 Resp: 12972

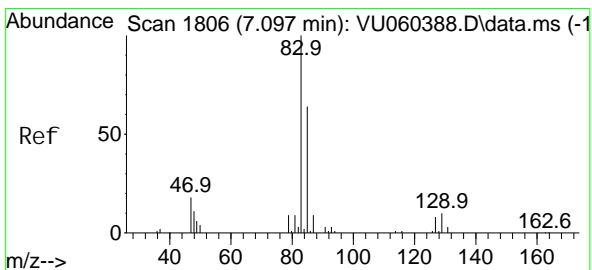
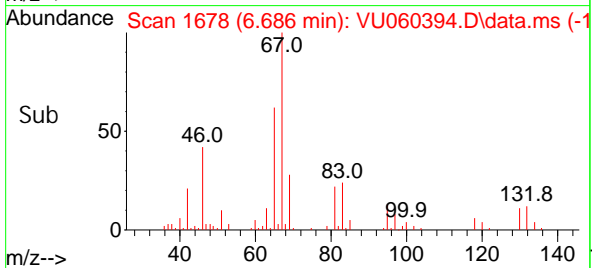
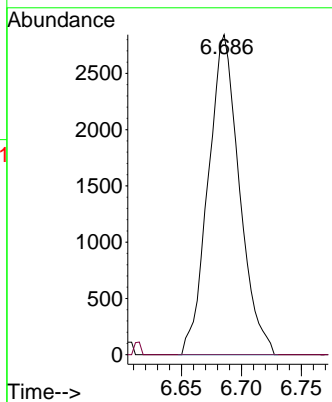
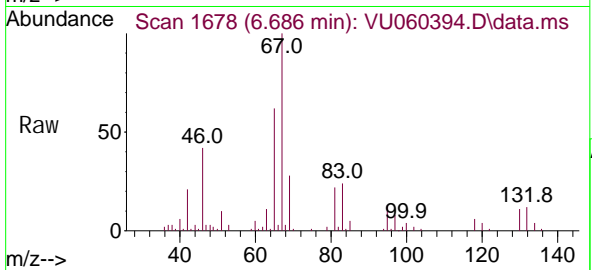
Ion	Ratio	Lower	Upper
83	100		
55	6.2	62.4	93.6#
98	0.0	37.3	55.9#





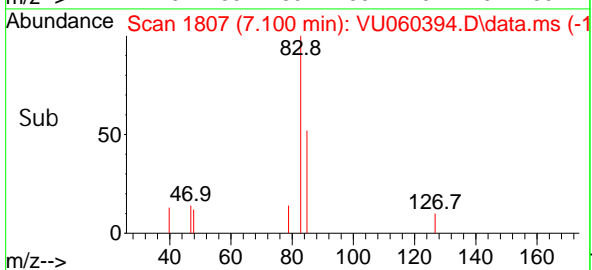
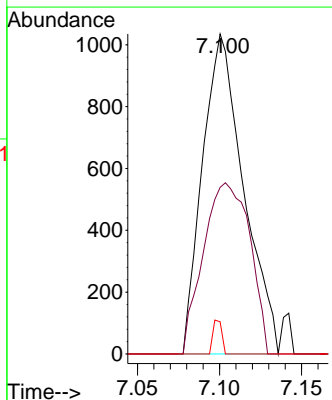
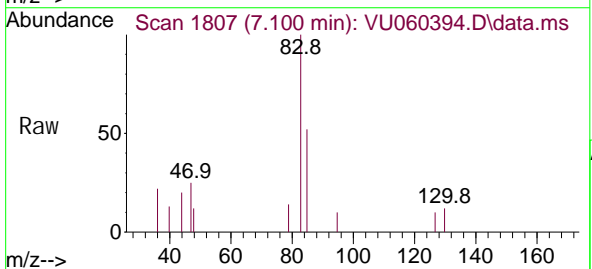
#37
 1, 2-Di chl oropropane
 Concen: 0.597 ug/L
 RT: 6.686 min Scan# 1678
 Del ta R. T. -0.096 min
 Lab File: VU060394.D
 Acq: 10 Aug 2024 00:36

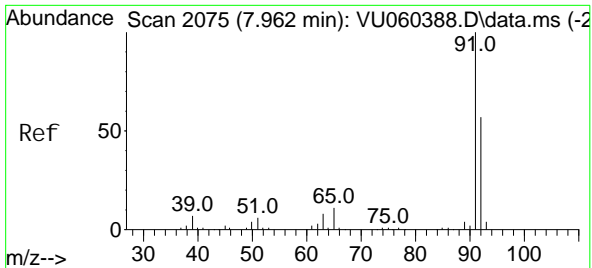
Tgt Ion: 63 Resp: 5146
 Ion Ratio Lower Upper
 63 100
 112 0.8 3.3 4.9#



#38
 Bromodi chl oromethane
 Concen: 0.169 ug/L
 RT: 7.100 min Scan# 1807
 Del ta R. T. 0.004 min
 Lab File: VU060394.D
 Acq: 10 Aug 2024 00:36

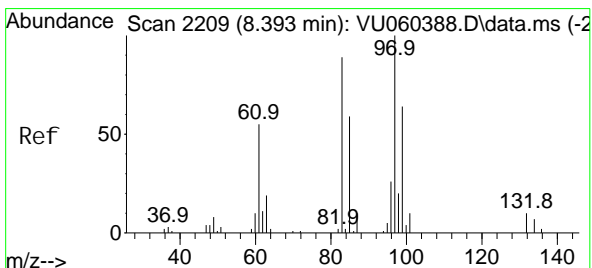
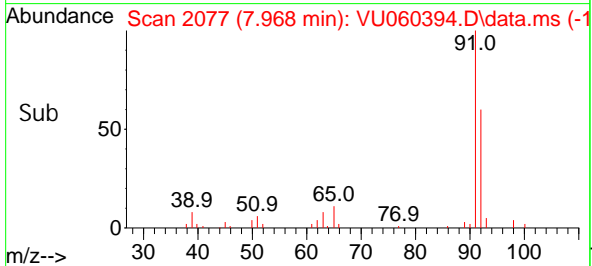
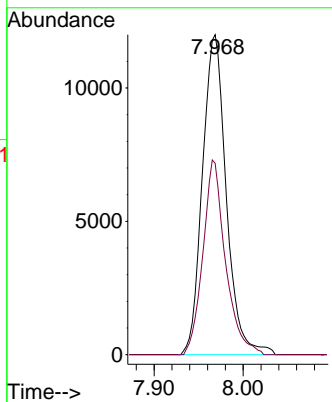
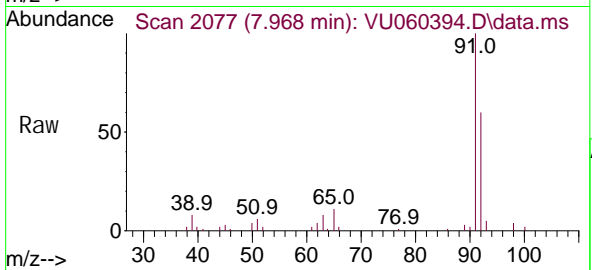
Tgt Ion: 83 Resp: 1801
 Ion Ratio Lower Upper
 83 100
 85 52.1 42.4 78.8
 127 10.0 7.0 10.4





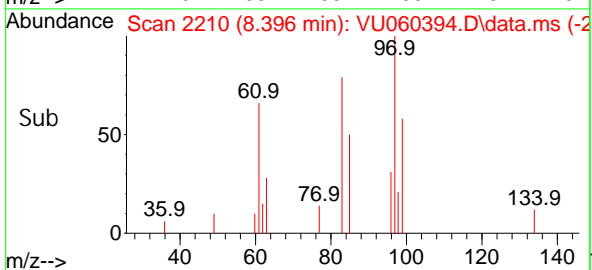
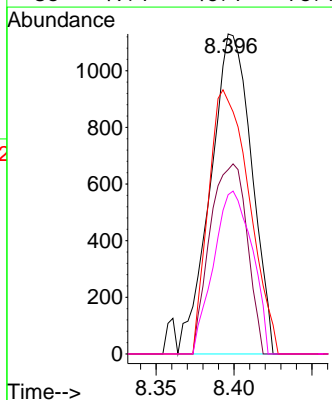
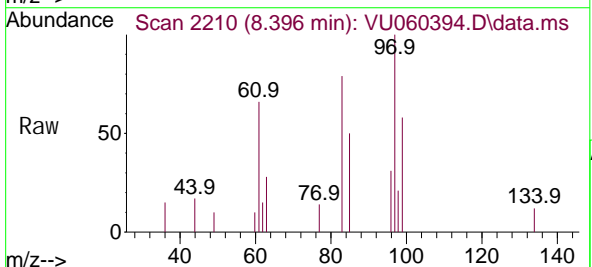
#42
 Tol uene
 Concen: 0.666 ug/L
 RT: 7.968 min Scan# 2077
 Delta R.T. 0.007 min
 Lab File: VU060394.D
 Acq: 10 Aug 2024 00:36

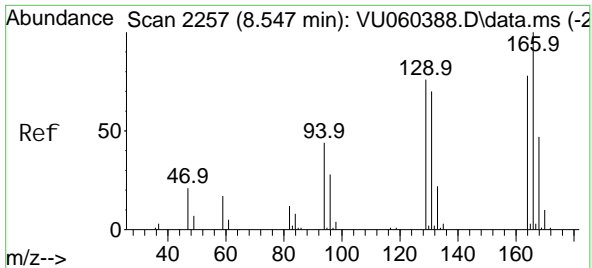
Tgt Ion	Resp	Lower	Upper
91	100		
92	59.8	40.6	75.4



#45
 1,1,2-Trichloroethane
 Concen: 0.314 ug/L
 RT: 8.396 min Scan# 2210
 Delta R.T. 0.003 min
 Lab File: VU060394.D
 Acq: 10 Aug 2024 00:36

Tgt Ion	Resp	Lower	Upper
97	100		
99	57.6	45.8	85.0
83	79.0	61.7	114.5
85	49.7	40.7	75.7

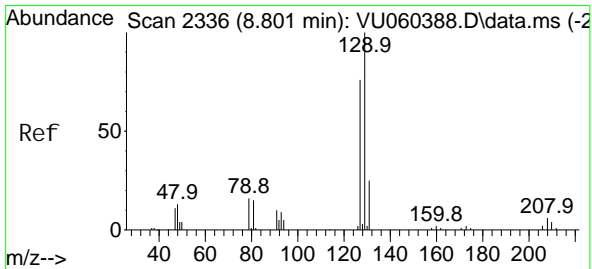
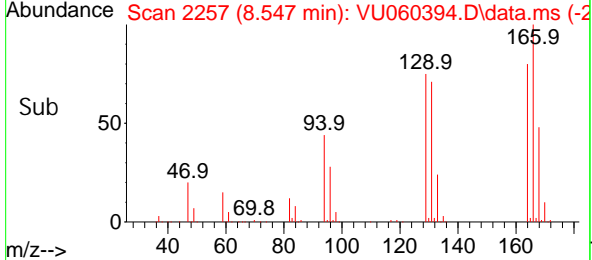
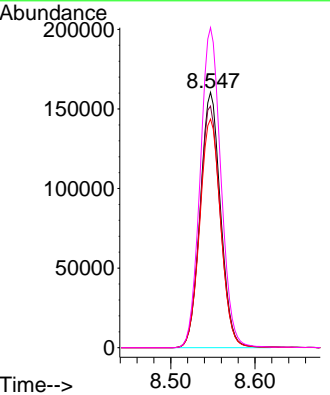
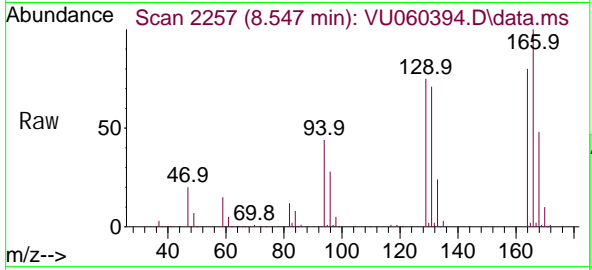




#47
 Tetrachloroethene
 Concen: 41.498 ug/L
 RT: 8.547 min Scan# 2257
 Delta R.T. 0.000 min
 Lab File: VU060394.D
 Acq: 10 Aug 2024 00:36

Tgt Ion: 164 Resp: 269100

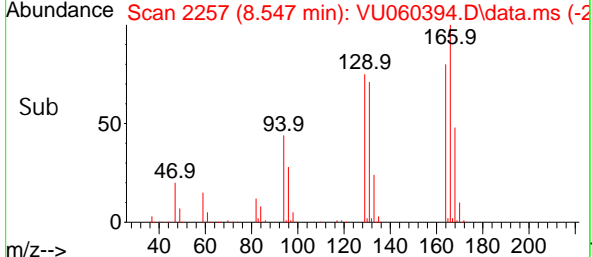
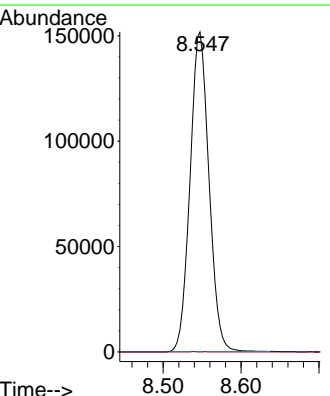
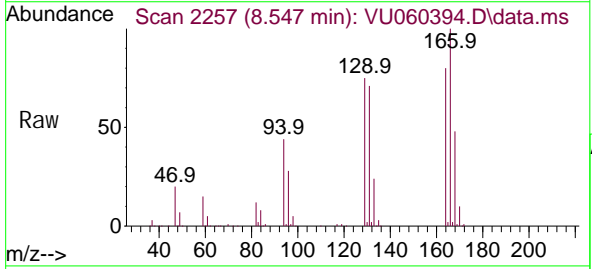
Ion	Ratio	Lower	Upper
164	100		
129	94.6	69.0	128.1
131	89.5	62.6	116.3
166	125.3	89.2	165.8

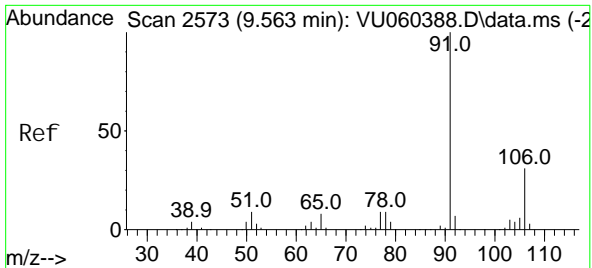


#49
 Dibromochloromethane
 Concen: 36.285 ug/L
 RT: 8.547 min Scan# 2257
 Delta R.T. -0.254 min
 Lab File: VU060394.D
 Acq: 10 Aug 2024 00:36

Tgt Ion: 129 Resp: 254704

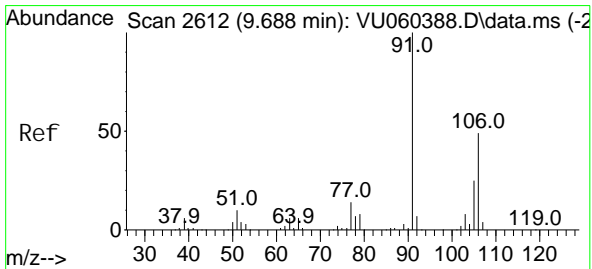
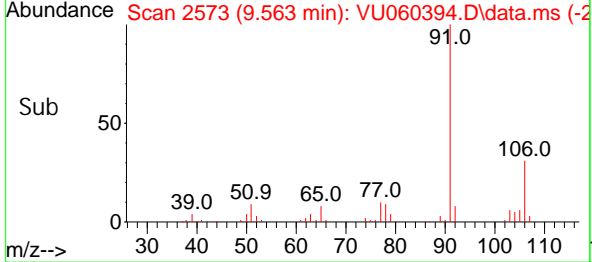
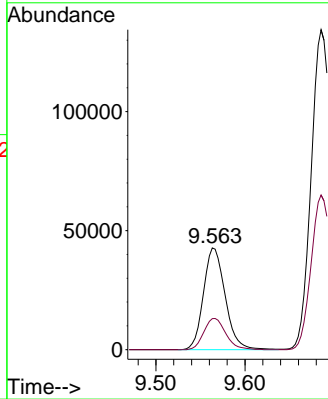
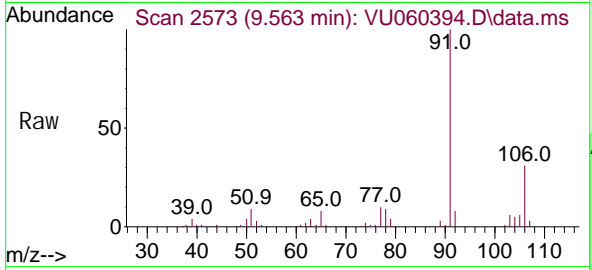
Ion	Ratio	Lower	Upper
129	100		
127	0.0	51.9	96.3#





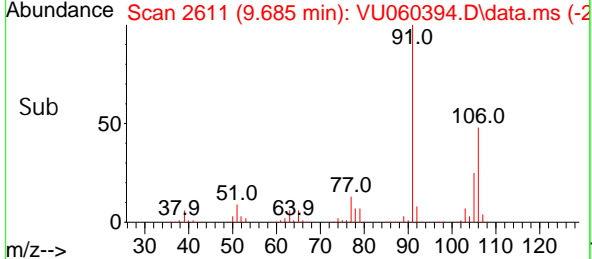
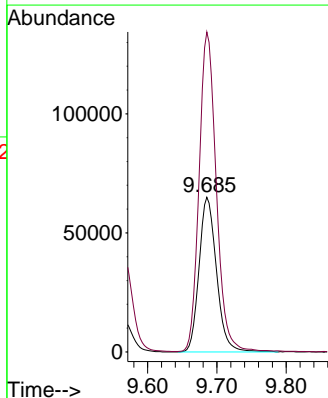
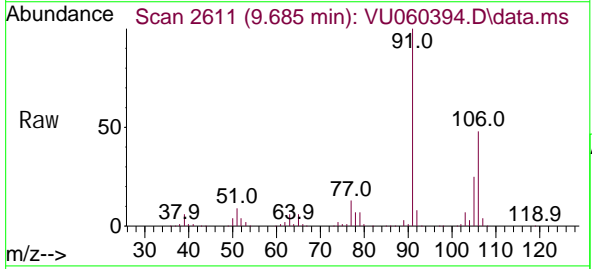
#52
 Ethyl benzene
 Concen: 2.055 ug/L
 RT: 9.563 min Scan# 2573
 Delta R.T. 0.000 min
 Lab File: VU060394.D
 Acq: 10 Aug 2024 00:36

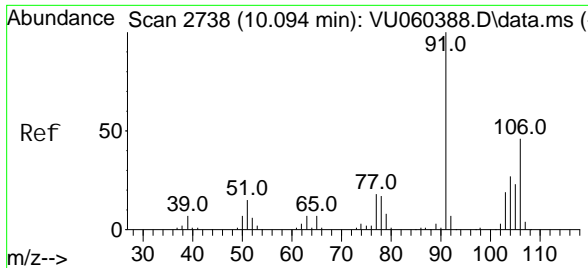
Tgt Ion: 91 Resp: 72446
 Ion Ratio Lower Upper
 91 100
 106 30.5 21.6 40.2



#53
 m, p-Xyl ene
 Concen: 8.495 ug/L
 RT: 9.685 min Scan# 2611
 Delta R.T. -0.003 min
 Lab File: VU060394.D
 Acq: 10 Aug 2024 00:36

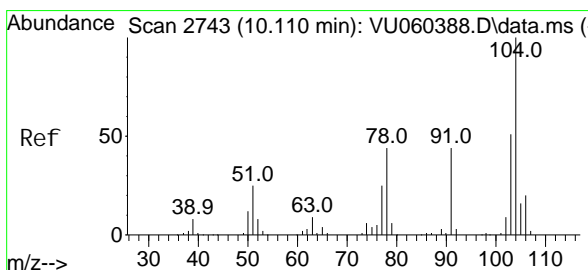
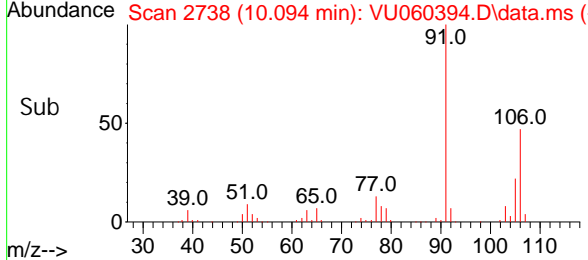
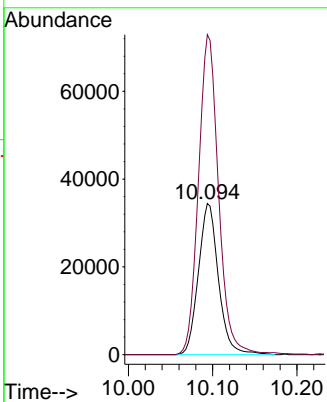
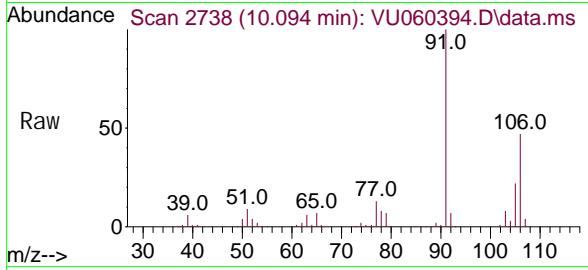
Tgt Ion: 106 Resp: 113831
 Ion Ratio Lower Upper
 106 100
 91 206.8 143.2 266.0





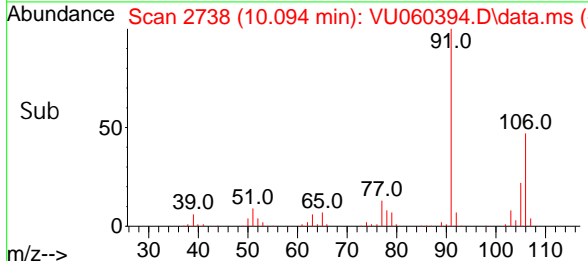
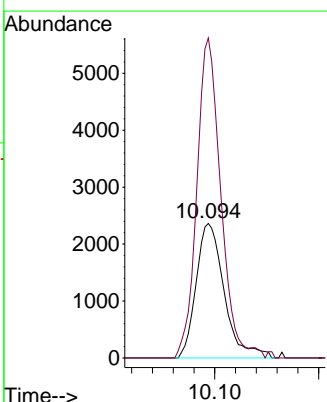
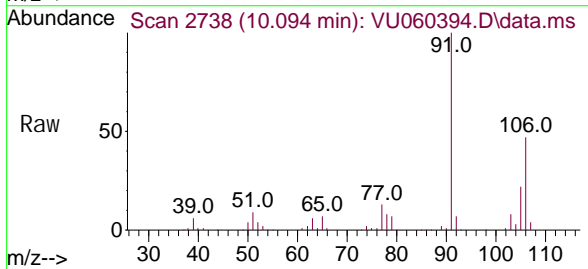
#54
 o-Xyl ene
 Concen: 4.453 ug/L
 RT: 10.094 min Scan# 2738
 Delta R.T. 0.000 min
 Lab File: VU060394.D
 Acq: 10 Aug 2024 00:36

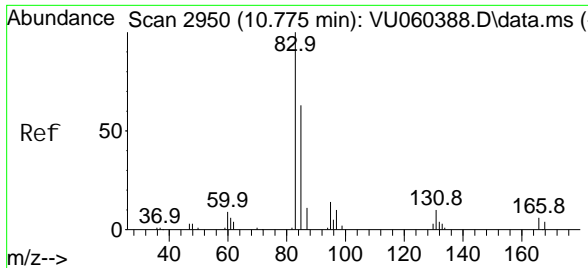
Tgt Ion: 106 Resp: 57098
 Ion Ratio Lower Upper
 106 100
 91 211.6 150.2 279.0



#55
 Styrene
 Concen: 0.199 ug/L
 RT: 10.094 min Scan# 2738
 Delta R.T. -0.016 min
 Lab File: VU060394.D
 Acq: 10 Aug 2024 00:36

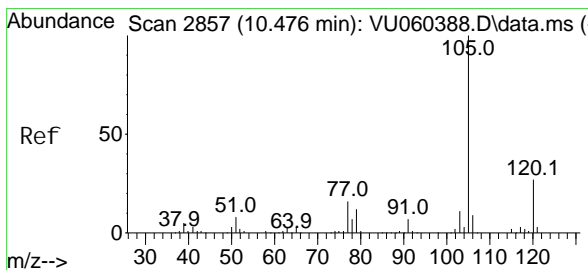
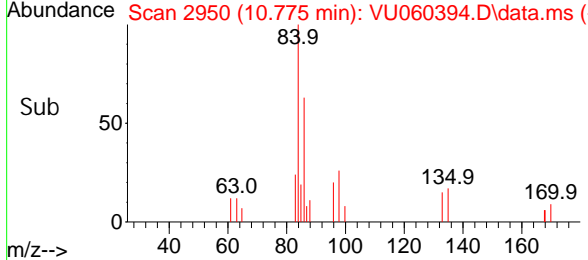
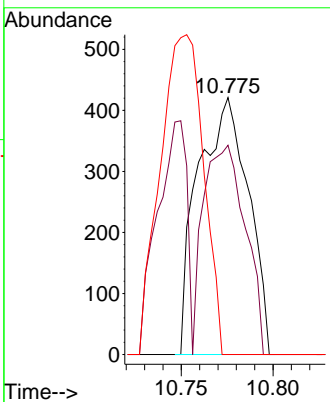
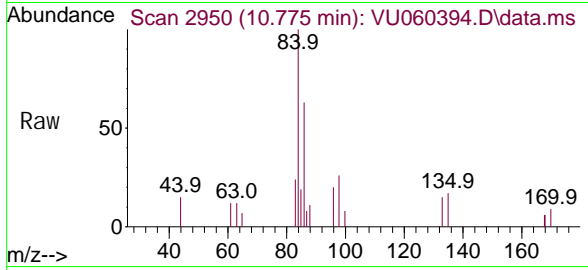
Tgt Ion: 104 Resp: 4421
 Ion Ratio Lower Upper
 104 100
 78 237.8 32.1 59.7#





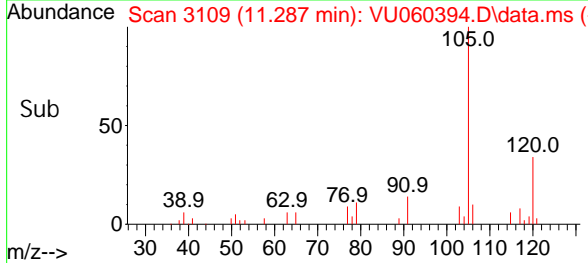
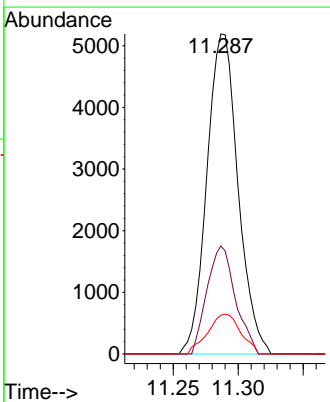
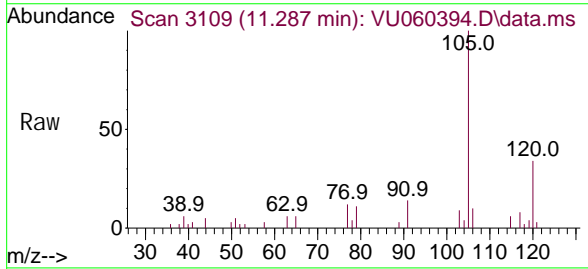
#57
 1,1,2,2-Tetrachloroethane
 Concen: 0.097 ug/L
 RT: 10.775 min Scan# 2950
 Delta R.T. 0.000 min
 Lab File: VU060394.D
 Acq: 10 Aug 2024 00:36

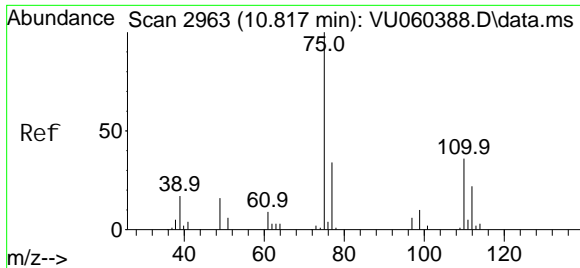
Tgt Ion	Resp	Lower	Upper
83	100		
85	81.5	46.1	85.5
131	0.0	7.6	11.4#



#60
 Isopropyl benzene
 Concen: 0.267 ug/L
 RT: 11.287 min Scan# 3109
 Delta R.T. 0.811 min
 Lab File: VU060394.D
 Acq: 10 Aug 2024 00:36

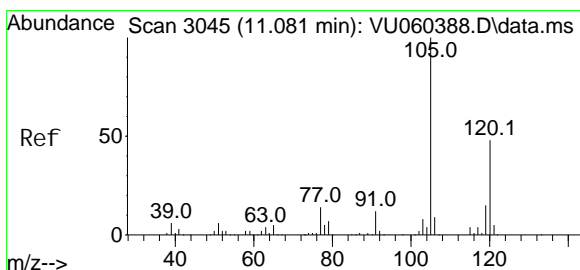
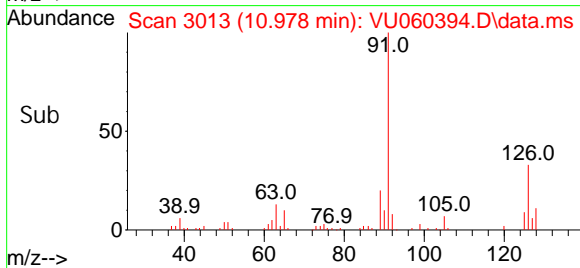
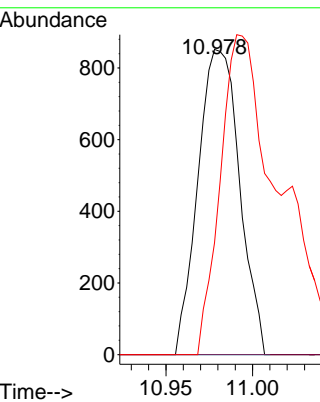
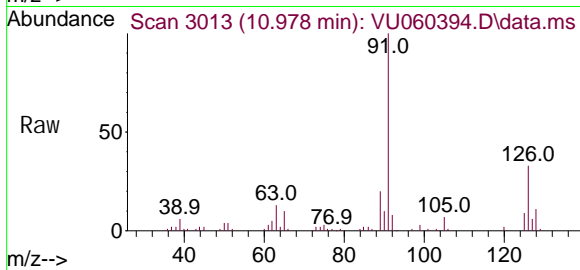
Tgt Ion	Resp	Lower	Upper
105	100		
120	30.8	21.0	31.6
77	13.1	12.6	19.0





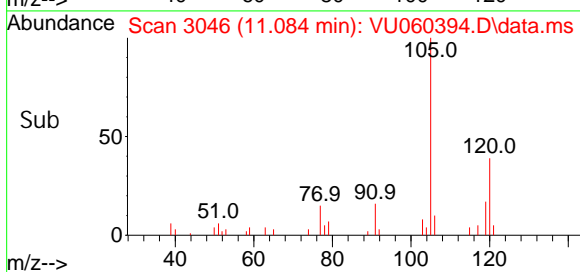
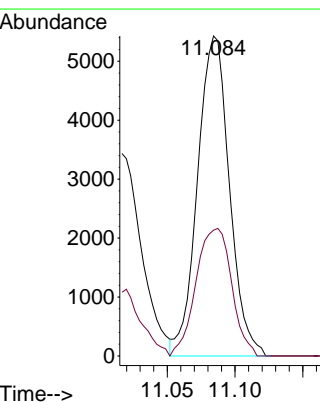
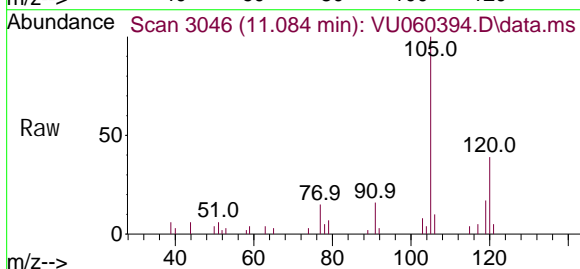
#61
 1, 2, 3-Tri chloropropane
 Concen: 0.273 ug/L
 RT: 10.978 min Scan# 3013
 Delta R.T. 0.161 min
 Lab File: VU060394.D
 Acq: 10 Aug 2024 00:36

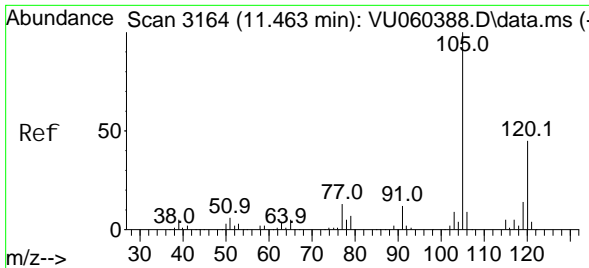
Tgt Ion	Resp	Lower	Upper
75	1421		
110	0.0	29.9	44.9#
77	115.8	27.0	40.6#



#62
 1, 3, 5-Tri methyl benzene
 Concen: 0.356 ug/L
 RT: 11.084 min Scan# 3046
 Delta R.T. 0.003 min
 Lab File: VU060394.D
 Acq: 10 Aug 2024 00:36

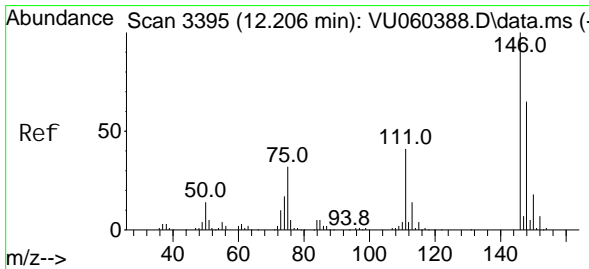
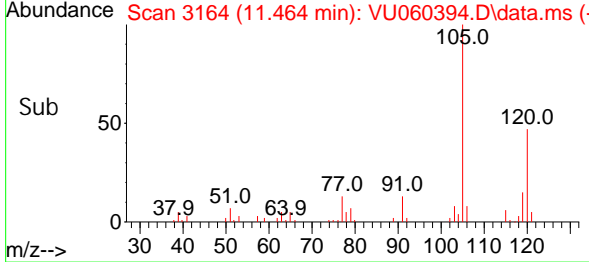
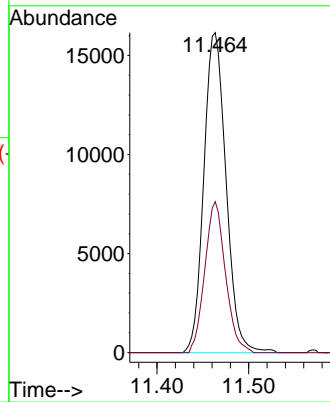
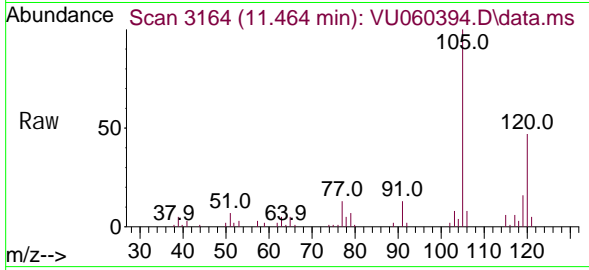
Tgt Ion	Resp	Lower	Upper
105	8875		
105	100		
120	44.5	39.3	58.9





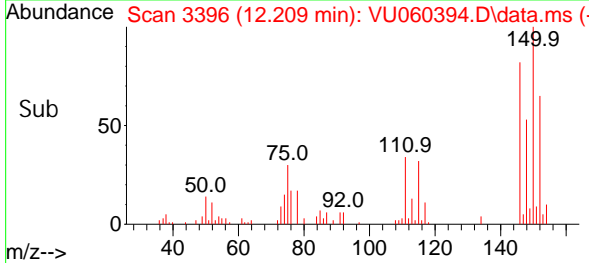
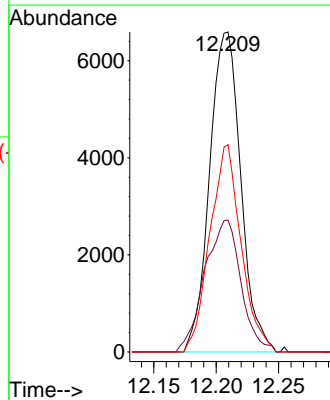
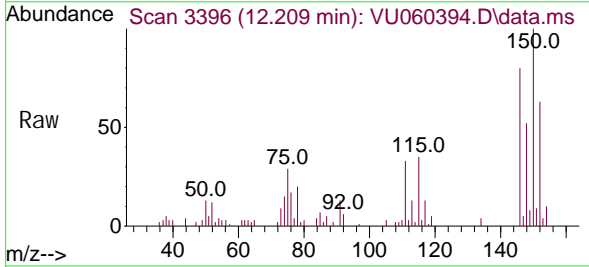
#63
 1, 2, 4-Tri methyl benzene
 Concen: 1.107 ug/L
 RT: 11.464 min Scan# 3164
 Delta R.T. 0.000 min
 Lab File: VU060394.D
 Acq: 10 Aug 2024 00:36

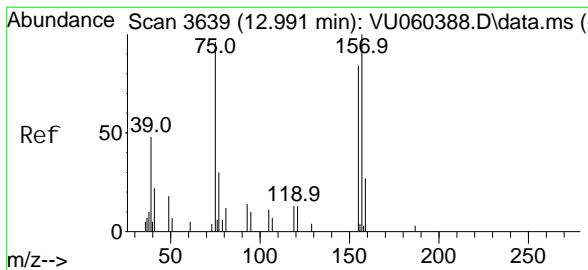
Tgt Ion: 105 Resp: 27234
 Ion Ratio Lower Upper
 105 100
 120 43.9 36.1 54.1



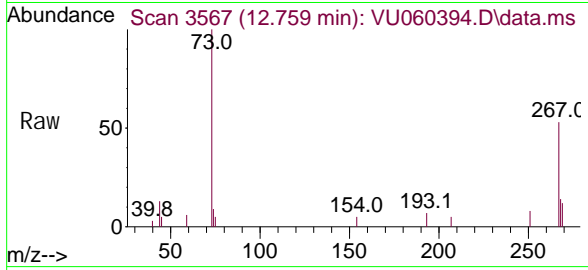
#67
 1, 2-Di chl orobenzene
 Concen: 0.736 ug/L
 RT: 12.209 min Scan# 3396
 Delta R.T. 0.003 min
 Lab File: VU060394.D
 Acq: 10 Aug 2024 00:36

Tgt Ion: 146 Resp: 11486
 Ion Ratio Lower Upper
 146 100
 111 41.2 32.0 48.0
 148 64.8 51.8 77.8





#68
 1, 2-Di bromo-3-chl oropropane
 Concen: 0.228 ug/L
 RT: 12.759 min Scan# 3567
 Del ta R.T. -0.231 mi n
 Lab File: VU060394.D
 Acq: 10 Aug 2024 00:36



Tgt Ion: 75 Resp: 222

Ion	Ratio	Lower	Upper
75	100		
155	0.0	64.3	96.5#
157	0.0	88.0	132.0#

