

Data Path : Z:\voasrv\HPCHEM1\MSVOA_U\Data\VU081122\
 Data File : VU050274.D
 Acq On : 12 Aug 2022 12:00
 Operator : SY/MD
 Sample : N4065-02
 Misc : 25.0mL/MSVOA_U/WATER
 ALS Vial : 11 Sample Multiplier: 1

Instrument :
 MSVOA_U
 ClientSampleId :

Quant Time: Aug 12 23:14:49 2022
 Quant Method : Z:\voasrv\HPCHEM1\MSVOA_U\Method\SFAMUTR080422WMA.M
 Quant Title : TRACE VOA SFAM1.0
 QLast Update : Fri Aug 12 23:11:34 2022
 Response via : Initial Calibration

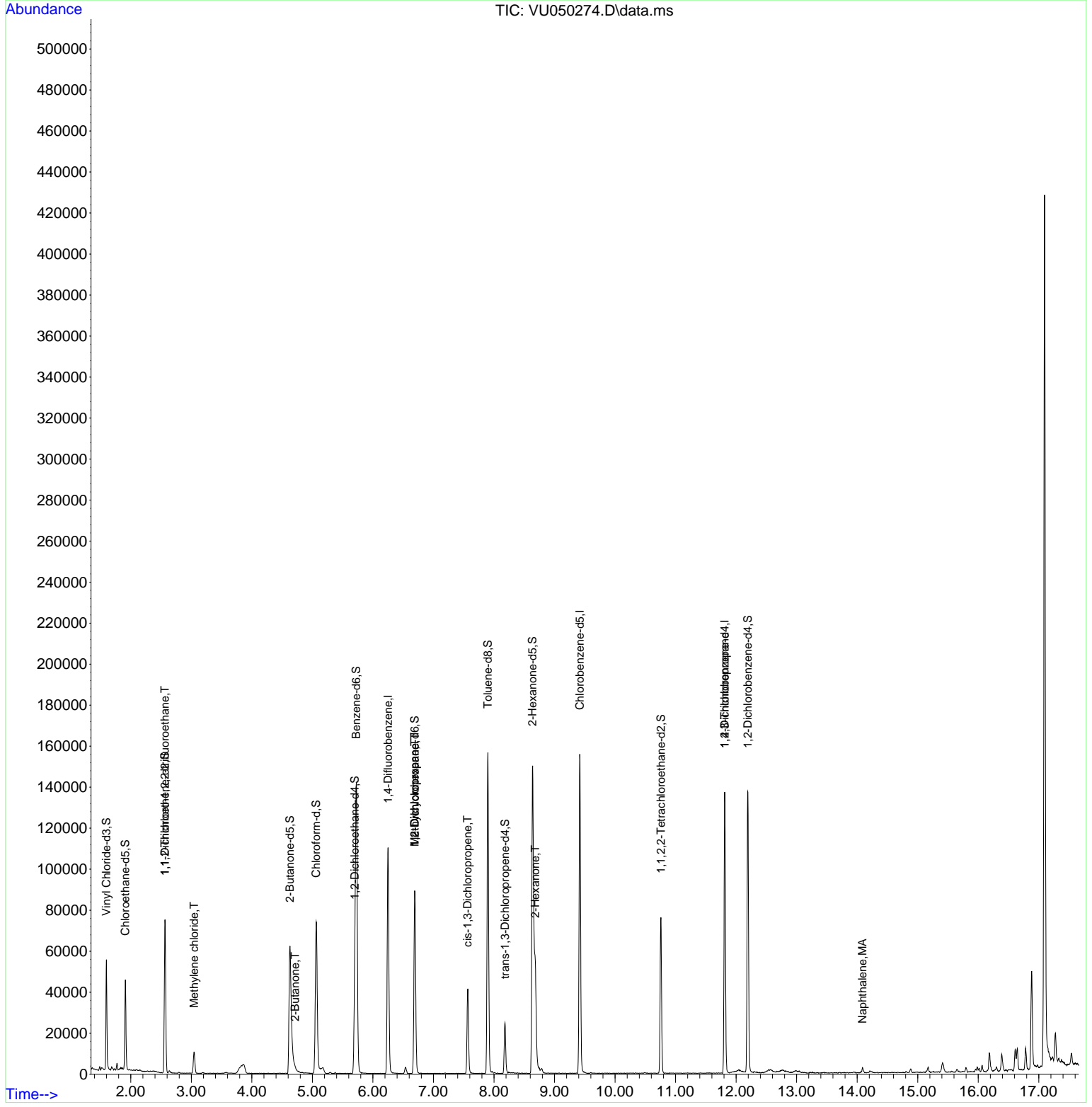
Compound	R.T.	QIon	Response	Conc	Units	Dev(Min)
Internal Standards						
1) 1,4-Difluorobenzene	6.250	114	91560	5.000	ug/L	0.00
28) Chlorobenzene-d5	9.417	117	89976	5.000	ug/L	0.00
58) 1,4-Dichlorobenzene-d4	11.812	152	37094	5.000	ug/L	0.00
System Monitoring Compounds						
4) Vinyl Chloride-d3	1.597	65	39200	5.145	ug/L	0.00
Spiked Amount	5.000	Range 40 - 130	Recovery	=	102.800%	
7) Chloroethane-d5	1.909	69	32064	5.216	ug/L	0.00
Spiked Amount	5.000	Range 65 - 130	Recovery	=	104.400%	
11) 1,1-Dichloroethene-d2	2.565	65	14299	4.802	ug/L	0.00
Spiked Amount	5.000	Range 60 - 125	Recovery	=	96.000%	
20) 2-Butanone-d5	4.629	46	97214	52.318	ug/L	0.00
Spiked Amount	50.000	Range 40 - 130	Recovery	=	104.640%	
24) Chloroform-d	5.063	84	67855	4.788	ug/L	0.00
Spiked Amount	5.000	Range 70 - 125	Recovery	=	95.800%	
26) 1,2-Dichloroethane-d4	5.700	65	37648	5.174	ug/L	0.00
Spiked Amount	5.000	Range 70 - 130	Recovery	=	103.400%	
32) Benzene-d6	5.726	84	137146	4.884	ug/L	0.00
Spiked Amount	5.000	Range 70 - 125	Recovery	=	97.600%	
36) 1,2-Dichloropropane-d6	6.690	67	45944	4.969	ug/L	0.00
Spiked Amount	5.000	Range 60 - 140	Recovery	=	99.400%	
41) Toluene-d8	7.899	98	107960	4.353	ug/L	0.00
Spiked Amount	5.000	Range 70 - 130	Recovery	=	87.000%	
43) trans-1,3-Dichloroprop...	8.182	79	15107	4.559	ug/L	0.00
Spiked Amount	5.000	Range 55 - 130	Recovery	=	91.200%	
46) 2-Hexanone-d5	8.636	63	44201	37.618	ug/L	0.00
Spiked Amount	50.000	Range 45 - 130	Recovery	=	75.240%	
56) 1,1,2,2-Tetrachloroeth...	10.758	84	39258	4.835	ug/L	0.00
Spiked Amount	5.000	Range 65 - 120	Recovery	=	96.600%	
66) 1,2-Dichlorobenzene-d4	12.195	152	38105	5.243	ug/L	0.00
Spiked Amount	5.000	Range 80 - 120	Recovery	=	104.800%	
Target Compounds						
10) 1,1,2-Trichloro-1,2,2-...	2.565	101	489	0.082	ug/L #	22
16) Methylene chloride	3.047	84	5331	0.551	ug/L	95
21) 2-Butanone	4.713	43	2244	1.206	ug/L #	53
35) Methylcyclohexane	6.690	83	10194	1.036	ug/L #	18
37) 1,2-Dichloropropane	6.690	63	4670	0.556	ug/L #	89
39) cis-1,3-Dichloropropene	7.565	75	995	0.091	ug/L #	71
48) 2-Hexanone	8.684	43	27176	7.224	ug/L #	91
61) 1,2,3-Trichloropropane	11.812	75	4553	0.901	ug/L #	67
71) Naphthalene	14.089	128	2463	0.178	ug/L #	95

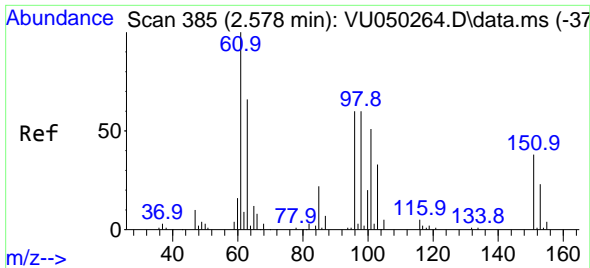
(#) = qualifier out of range (m) = manual integration (+) = signals summed

Data Path : Z:\voasrv\HPCHEM1\MSVOA_U\Data\VU081122\
 Data File : VU050274.D
 Acq On : 12 Aug 2022 12:00
 Operator : SY/MD
 Sample : N4065-02
 Misc : 25.0mL/MSVOA_U/WATER
 ALS Vial : 11 Sample Multiplier: 1

Instrument :
 MSVOA_U
 ClientSampleId :

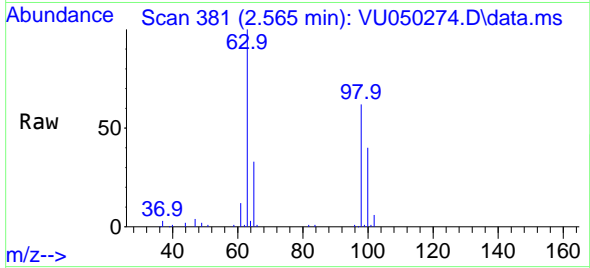
Quant Time: Aug 12 23:14:49 2022
 Quant Method : Z:\voasrv\HPCHEM1\MSVOA_U\Method\SFAMUTR080422WMA.M
 Quant Title : TRACE VOA SFAM1.0
 QLast Update : Fri Aug 12 23:11:34 2022
 Response via : Initial Calibration



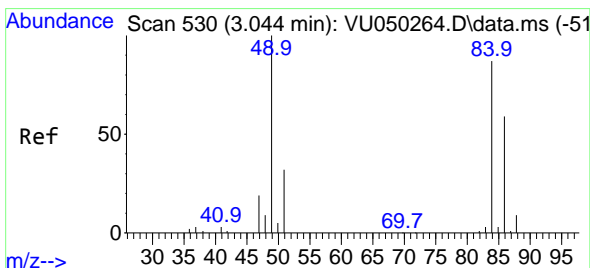
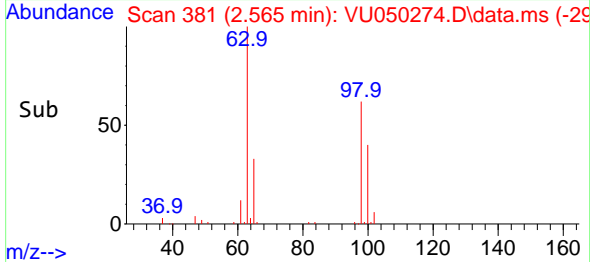
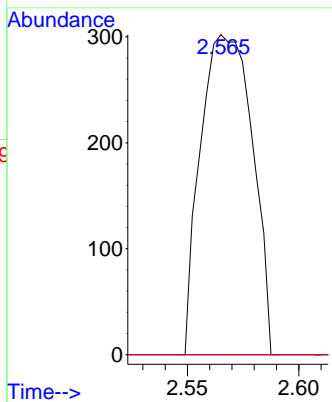


#10
 1,1,2-Trichloro-1,2,2-trifluoroethane
 Concen: 0.082 ug/L
 RT: 2.565 min Scan# 381
 Delta R.T. -0.013 min
 Lab File: VU050274.D
 Acq: 12 Aug 2022 12:00

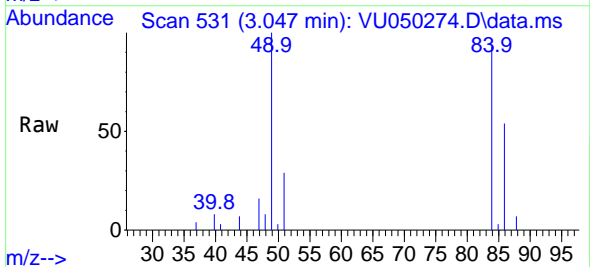
Instrument : MSVOA_U
 ClientSampleId :



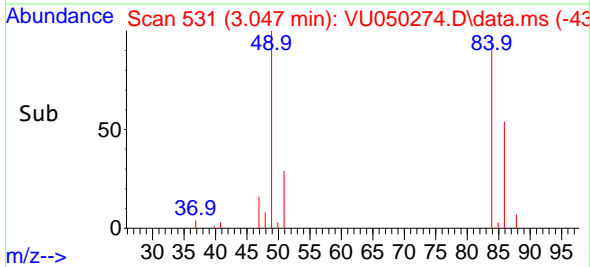
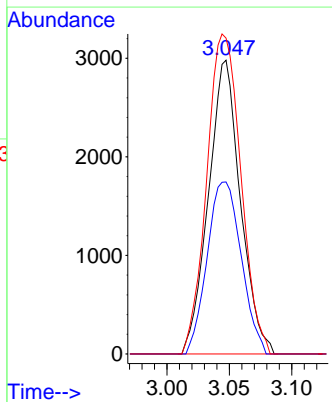
Tgt Ion:101 Resp: 489
 Ion Ratio Lower Upper
 101 100
 85 0.0 35.6 53.4#
 151 0.0 55.2 82.8#

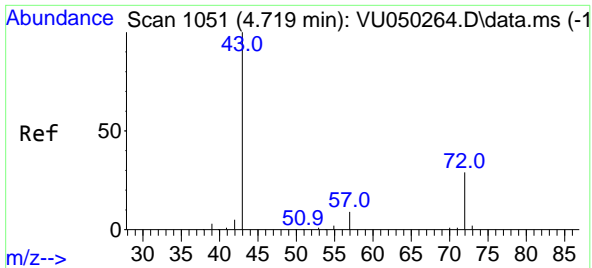


#16
 Methylene chloride
 Concen: 0.551 ug/L
 RT: 3.047 min Scan# 531
 Delta R.T. 0.003 min
 Lab File: VU050274.D
 Acq: 12 Aug 2022 12:00



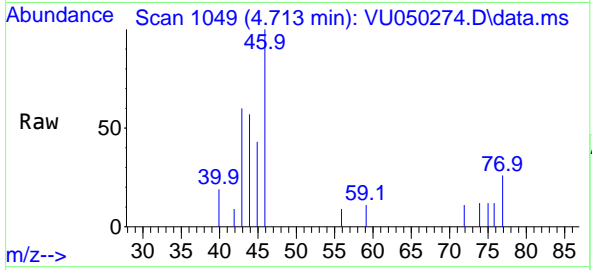
Tgt Ion: 84 Resp: 5331
 Ion Ratio Lower Upper
 84 100
 86 58.6 45.9 85.3
 49 107.5 77.6 144.0



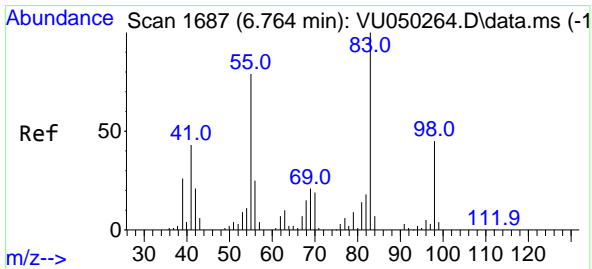
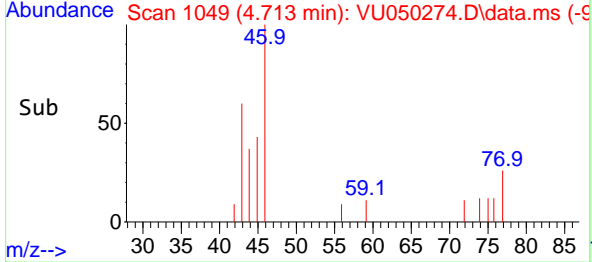
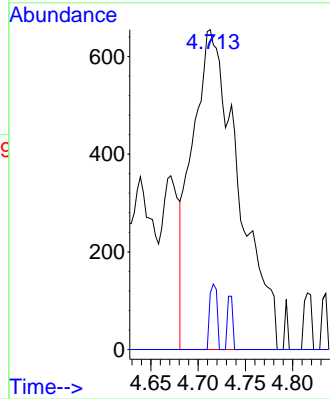


#21
 2-Butanone
 Concen: 1.206 ug/L
 RT: 4.713 min Scan# 1051
 Delta R.T. -0.007 min
 Lab File: VU050274.D
 Acq: 12 Aug 2022 12:00

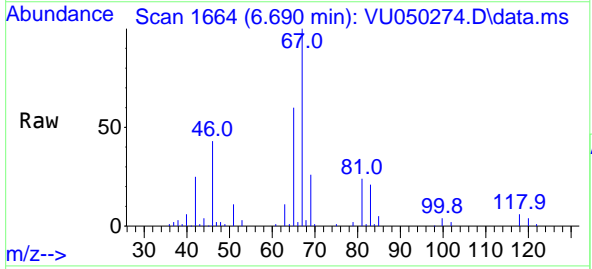
Instrument : MSVOA_U
 ClientSampleId :



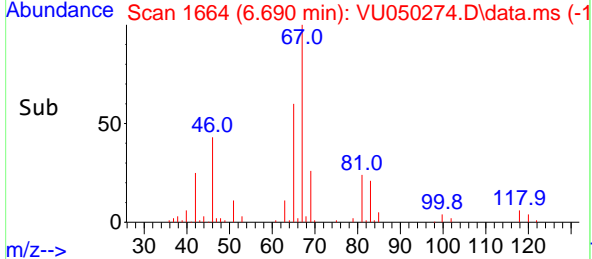
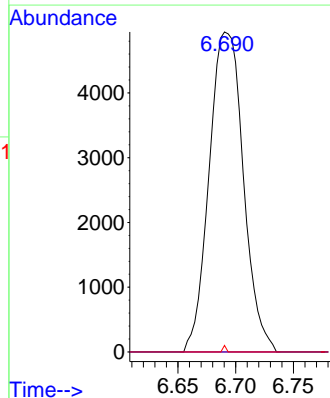
Tgt Ion: 43 Resp: 2244
 Ion Ratio Lower Upper
 43 100
 72 3.2 14.0 42.0#

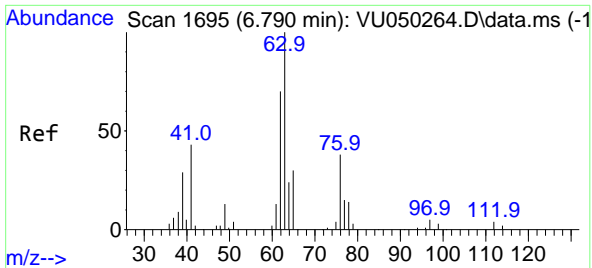


#35
 Methylcyclohexane
 Concen: 1.036 ug/L
 RT: 6.690 min Scan# 1664
 Delta R.T. -0.074 min
 Lab File: VU050274.D
 Acq: 12 Aug 2022 12:00



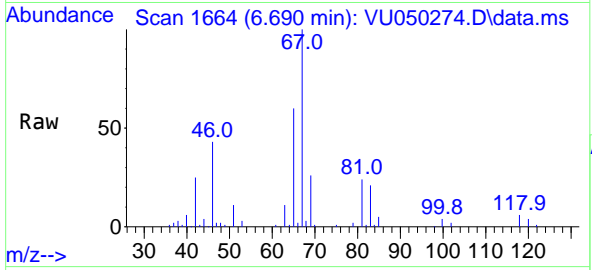
Tgt Ion: 83 Resp: 10194
 Ion Ratio Lower Upper
 83 100
 55 0.0 62.7 94.1#
 98 0.2 36.2 54.2#



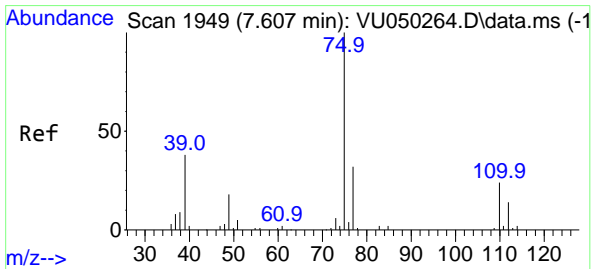
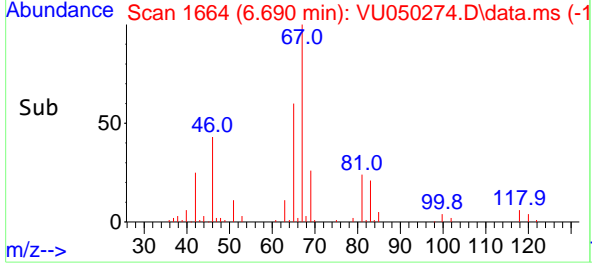
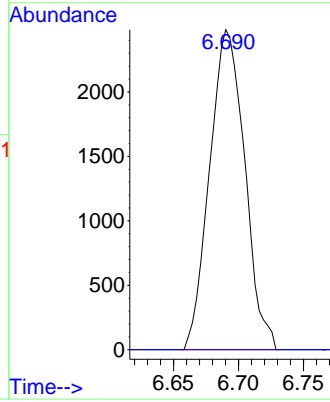


#37
 1,2-Dichloropropane
 Concen: 0.556 ug/L
 RT: 6.690 min Scan# 1
 Delta R.T. -0.100 min
 Lab File: VU050274.D
 Acq: 12 Aug 2022 12:00

Instrument :
 MSVOA_U
 ClientSampleId :

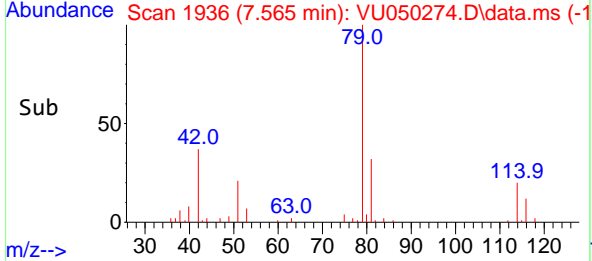
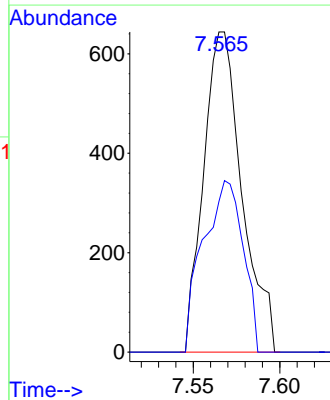
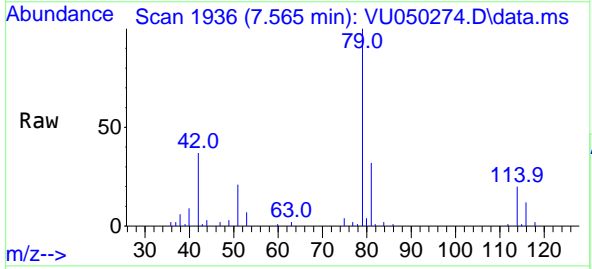


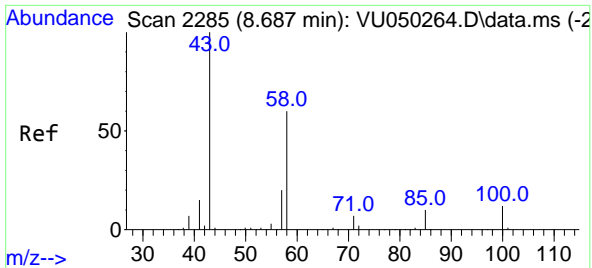
Tgt Ion: 63 Resp: 4670
 Ion Ratio Lower Upper
 63 100
 112 0.0 3.0 4.4#



#39
 cis-1,3-Dichloropropene
 Concen: 0.091 ug/L
 RT: 7.565 min Scan# 1936
 Delta R.T. -0.042 min
 Lab File: VU050274.D
 Acq: 12 Aug 2022 12:00

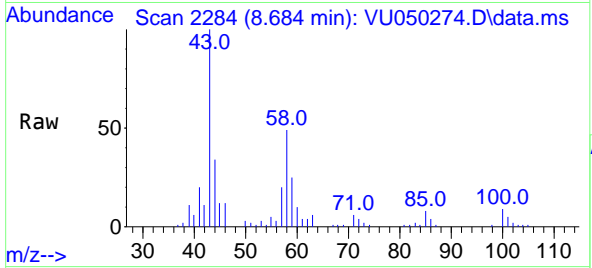
Tgt Ion: 75 Resp: 995
 Ion Ratio Lower Upper
 75 100
 77 47.0 21.8 40.4#





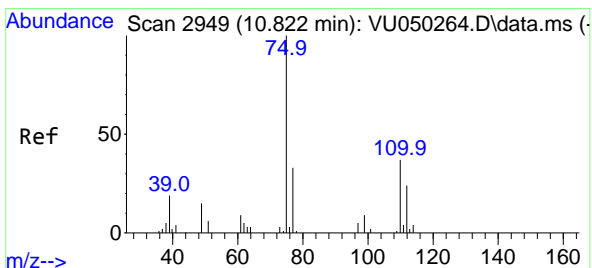
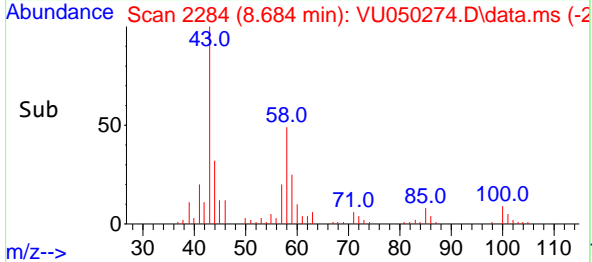
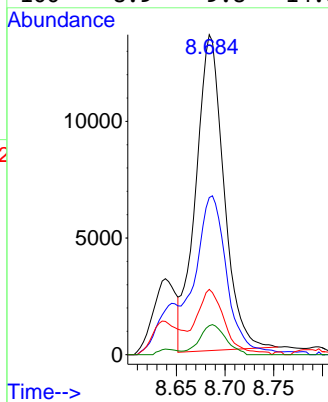
#48
 2-Hexanone
 Concen: 7.224 ug/L
 RT: 8.684 min Scan# 21
 Delta R.T. -0.003 min
 Lab File: VU050274.D
 Acq: 12 Aug 2022 12:00

Instrument :
 MSVOA_U
 ClientSampleId :



Tgt Ion: 43 Resp: 27176

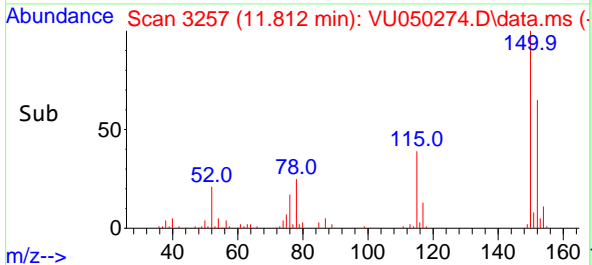
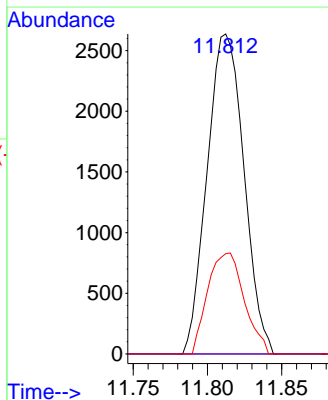
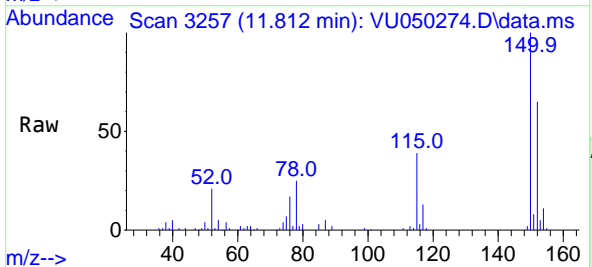
Ion	Ratio	Lower	Upper
43	100		
58	53.6	50.6	76.0
57	20.2	16.0	24.0
100	8.9	9.8	14.8

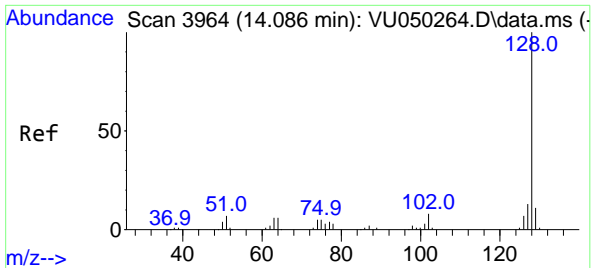


#61
 1,2,3-Trichloropropane
 Concen: 0.901 ug/L
 RT: 11.812 min Scan# 3257
 Delta R.T. 0.990 min
 Lab File: VU050274.D
 Acq: 12 Aug 2022 12:00

Tgt Ion: 75 Resp: 4553

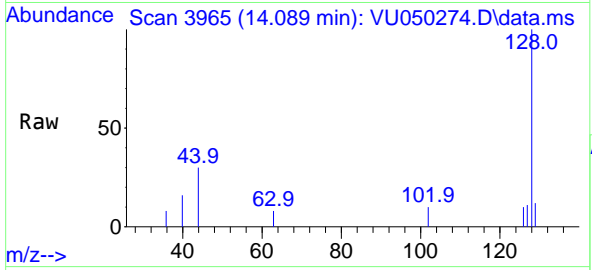
Ion	Ratio	Lower	Upper
75	100		
110	0.0	28.5	42.7
77	31.2	25.8	38.6





#71
 Naphthalene
 Concen: 0.178 ug/L
 RT: 14.089 min Scan# 3965
 Delta R.T. 0.003 min
 Lab File: VU050274.D
 Acq: 12 Aug 2022 12:00

Instrument : MSVOA_U
 ClientSampleId :



Tgt Ion:128 Resp: 2463

Ion	Ratio	Lower	Upper
128	100		
129	9.9	8.6	12.8
127	10.3	10.6	16.0#

