

Data Path : Z:\voasrv\HPCHEM1\MSVOA\_U\Data\VU081122\  
 Data File : VU050235.D  
 Acq On : 11 Aug 2022 17:08  
 Operator : SY/MD  
 Sample : N4160-09  
 Misc : 25.0mL/MSVOA\_U/WATER  
 ALS Vial : 12 Sample Multiplier: 1

**Instrument :**  
 MSVOA\_U  
**ClientSampleId :**  
 BGBT5

Quant Time: Aug 12 01:33:55 2022  
 Quant Method : Z:\voasrv\HPCHEM1\MSVOA\_U\Method\SFAMUTR080422WMA.M  
 Quant Title : TRACE VOA SFAM1.0  
 QLast Update : Fri Aug 12 01:30:48 2022  
 Response via : Initial Calibration

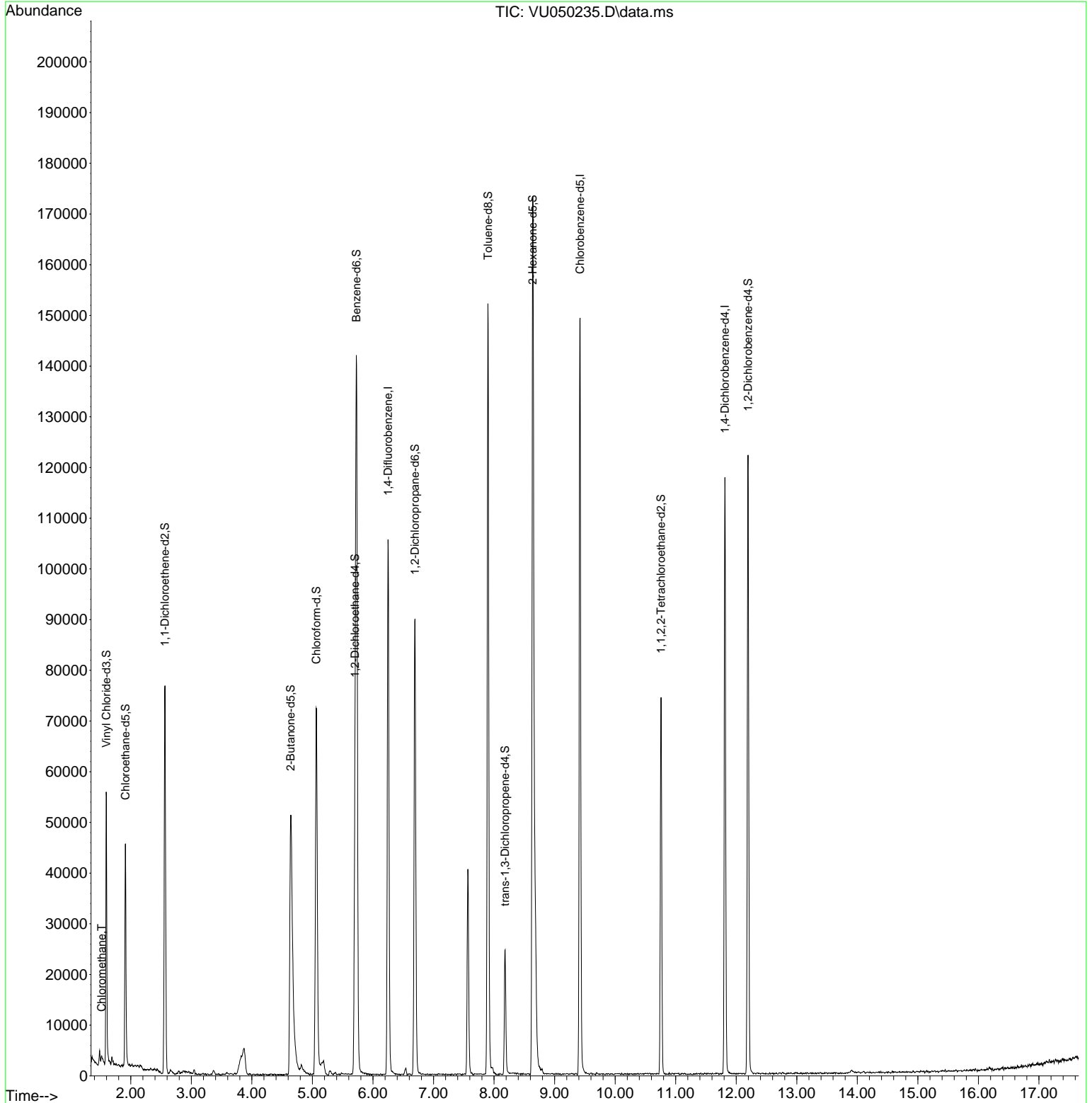
Compound	R.T.	QIon	Response	Conc	Units	Dev(Min)
Internal Standards						
1) 1,4-Difluorobenzene	6.250	114	86520	5.000	ug/L	0.00
28) Chlorobenzene-d5	9.420	117	87164	5.000	ug/L	0.00
58) 1,4-Dichlorobenzene-d4	11.812	152	33185	5.000	ug/L	0.00
System Monitoring Compounds						
4) Vinyl Chloride-d3	1.594	65	40192	5.582	ug/L	0.00
Spiked Amount	5.000	Range 40 - 130	Recovery	=	111.600%	
7) Chloroethane-d5	1.912	69	32718	5.632	ug/L	0.00
Spiked Amount	5.000	Range 65 - 130	Recovery	=	112.600%	
11) 1,1-Dichloroethene-d2	2.562	65	14951	5.313	ug/L	0.00
Spiked Amount	5.000	Range 60 - 125	Recovery	=	106.200%	
20) 2-Butanone-d5	4.642	46	100451	57.209	ug/L	0.00
Spiked Amount	50.000	Range 40 - 130	Recovery	=	114.420%	
24) Chloroform-d	5.063	84	68466	5.112	ug/L	0.00
Spiked Amount	5.000	Range 70 - 125	Recovery	=	102.200%	
26) 1,2-Dichloroethane-d4	5.703	65	37476	5.450	ug/L	0.00
Spiked Amount	5.000	Range 70 - 130	Recovery	=	109.000%	
32) Benzene-d6	5.729	84	134355	4.939	ug/L	0.00
Spiked Amount	5.000	Range 70 - 125	Recovery	=	98.800%	
36) 1,2-Dichloropropane-d6	6.694	67	45680	5.100	ug/L	0.00
Spiked Amount	5.000	Range 60 - 140	Recovery	=	102.000%	
41) Toluene-d8	7.899	98	104163	4.336	ug/L	0.00
Spiked Amount	5.000	Range 70 - 130	Recovery	=	86.800%	
43) trans-1,3-Dichloroprop...	8.182	79	15060	4.692	ug/L	0.00
Spiked Amount	5.000	Range 55 - 130	Recovery	=	93.800%	
46) 2-Hexanone-d5	8.639	63	54772	48.119	ug/L	0.00
Spiked Amount	50.000	Range 45 - 130	Recovery	=	96.240%	
56) 1,1,2,2-Tetrachloroeth...	10.758	84	39238	4.988	ug/L	0.00
Spiked Amount	5.000	Range 65 - 120	Recovery	=	99.800%	
66) 1,2-Dichlorobenzene-d4	12.195	152	33587	5.166	ug/L	0.00
Spiked Amount	5.000	Range 80 - 120	Recovery	=	103.400%	
Target Compounds						
3) Chloromethane	1.520	50	1687	0.163	ug/L	96

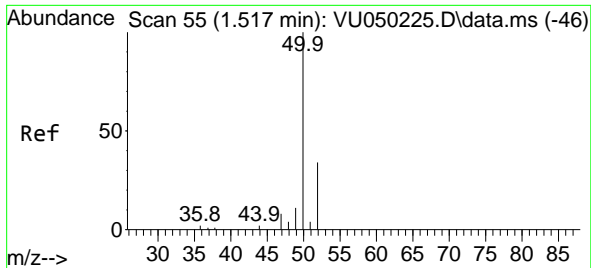
(#) = qualifier out of range (m) = manual integration (+) = signals summed

Data Path : Z:\voasrv\HPCHEM1\MSVOA\_U\Data\VU081122\  
 Data File : VU050235.D  
 Acq On : 11 Aug 2022 17:08  
 Operator : SY/MD  
 Sample : N4160-09  
 Misc : 25.0mL/MSVOA\_U/WATER  
 ALS Vial : 12 Sample Multiplier: 1

Instrument :  
 MSVOA\_U  
 ClientSampleId :  
 BGBT5

Quant Time: Aug 12 01:33:55 2022  
 Quant Method : Z:\voasrv\HPCHEM1\MSVOA\_U\Method\SFAMUTR080422WMA.M  
 Quant Title : TRACE VOA SFAM1.0  
 QLast Update : Fri Aug 12 01:30:48 2022  
 Response via : Initial Calibration





#3  
 Chloromethane  
 Concen: 0.163 ug/L  
 RT: 1.520 min Scan# 50  
 Delta R.T. 0.003 min  
 Lab File: VU050235.D  
 Acq: 11 Aug 2022 17:08

Instrument :  
 MSVOA\_U  
 ClientSampleId :  
 BGBT5

Tgt Ion: 50 Resp: 1687  
 Ion Ratio Lower Upper  
 50 100  
 52 30.7 23.2 43.2

