

Data Path : Z:\voasrv\HPCHEM1\MSVOA_U\Data\VU081122\
 Data File : VU050271.D
 Acq On : 12 Aug 2022 10:46
 Operator : SY/MD
 Sample : N4096-06
 Misc : 25.0mL/MSVOA_U/WATER
 ALS Vial : 8 Sample Multiplier: 1

Instrument :
 MSVOA_U
 ClientSampleId :
 GBJM8

Integration Parameters: rteint.p

Integrator: RTE
 Smoothing : ON Filtering: 5
 Sampling : 1 Min Area: 3 % of largest Peak
 Start Thrs: 0.1 Max Peaks: 100
 Stop Thrs : 0 Peak Location: TOP

If leading or trailing edge < 100 prefer < Baseline drop else tangent >
 Peak separation: 5

Method : Z:\voasrv\HPCHEM1\MSVOA_U\Method\SFAMUTR080422WMA.M
 Title : TRACE VOA SFAM1.0

Signal : TIC: VU050271.D\data.ms

peak #	R.T. min	first scan	max scan	last scan	PK TY	peak height	corr. area	corr. % max.	% of total
1	2.578	369	385	409	rBV3	554493	1073765	11.56%	7.435%
2	4.665	1010	1034	1066	rBV2	567274	1421177	15.30%	9.841%
3	5.064	1143	1158	1182	rBV2	73385	183109	1.97%	1.268%
4	5.523	1286	1301	1322	rBV	88286	193131	2.08%	1.337%
5	5.726	1344	1364	1381	rBV2	135057	351825	3.79%	2.436%
6	6.250	1514	1527	1547	rBV	92253	174909	1.88%	1.211%
7	6.543	1601	1618	1652	rBV	5039514	9290628	100.00%	64.331%
8	6.690	1653	1664	1683	rVB2	89622	184774	1.99%	1.279%
9	7.899	2027	2040	2058	rBV	143988	252756	2.72%	1.750%
10	8.552	2231	2243	2257	rBV	119623	203805	2.19%	1.411%
11	8.639	2257	2270	2304	rBV6	145672	413267	4.45%	2.862%
12	9.417	2500	2512	2531	rBV	130043	218079	2.35%	1.510%
13	10.758	2917	2929	2946	rBV	73576	119724	1.29%	0.829%
14	11.812	3245	3257	3275	rBV	103865	167285	1.80%	1.158%
15	12.195	3361	3376	3394	rBV	116721	193698	2.08%	1.341%

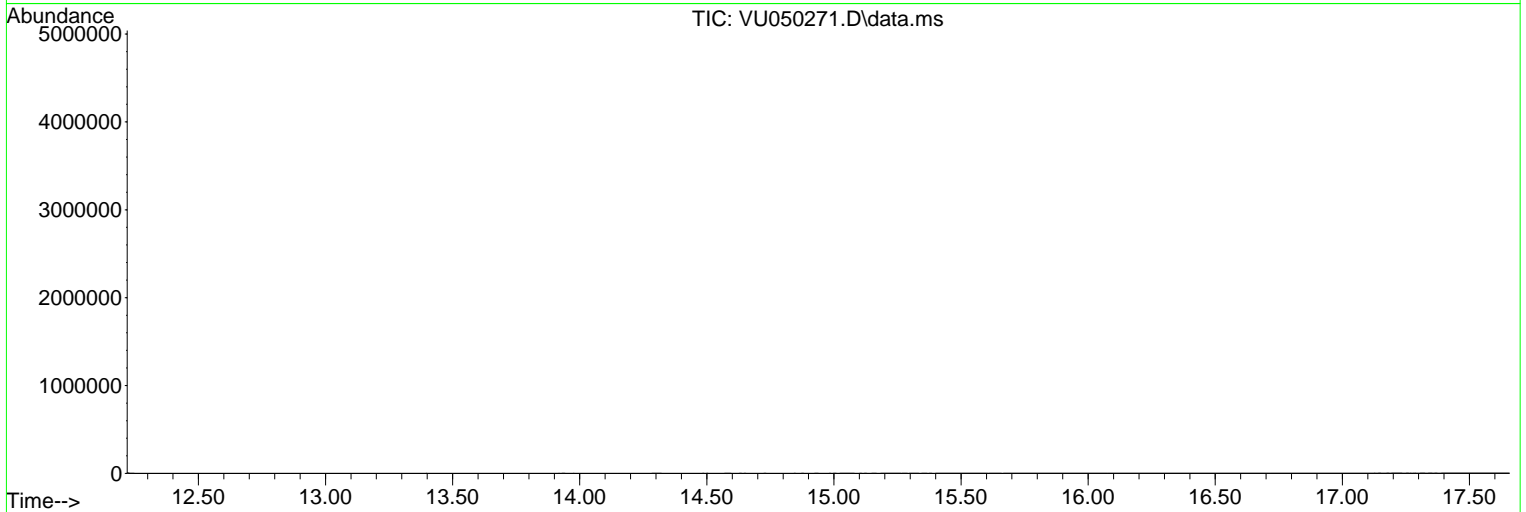
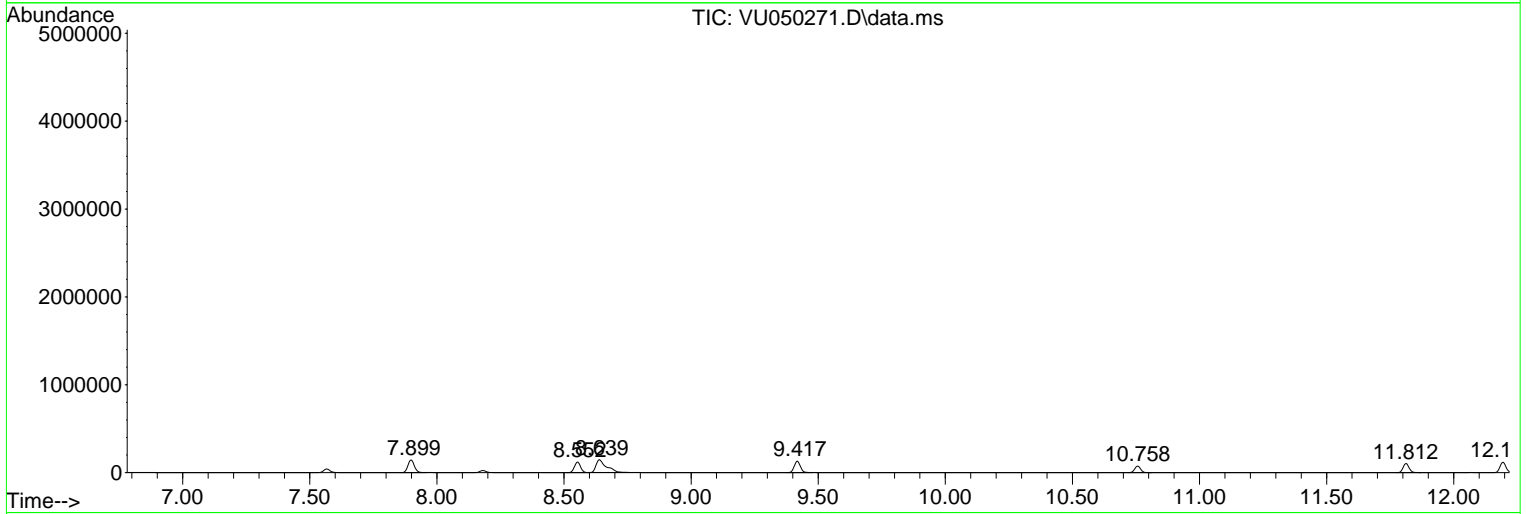
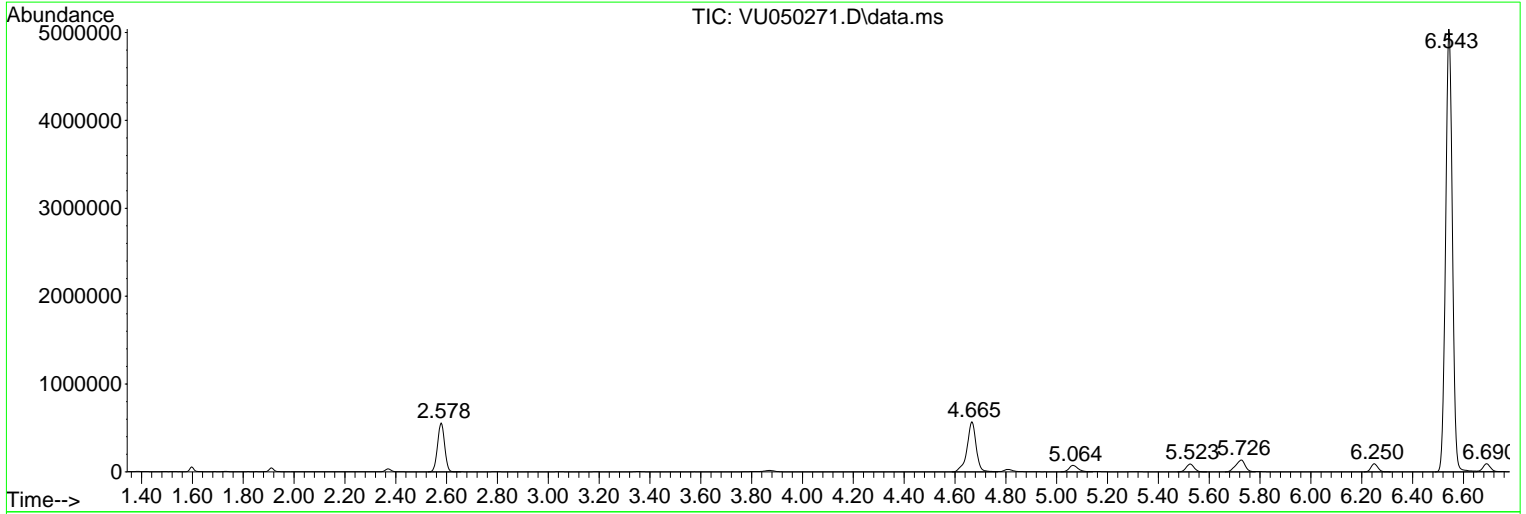
Sum of corrected areas: 14441932

Data Path : Z:\voasrv\HPCHEM1\MSVOA_U\Data\VU081122\
 Data File : VU050271.D
 Acq On : 12 Aug 2022 10:46
 Operator : SY/MD
 Sample : N4096-06
 Misc : 25.0mL/MSVOA_U/WATER
 ALS Vial : 8 Sample Multiplier: 1

Instrument :
 MSVOA_U
 ClientSampleId :
 GBJM8

Quant Method : Z:\voasrv\HPCHEM1\MSVOA_U\Method\SFAMUTR080422WMA.M
 Quant Title : TRACE VOA SFAM1.0

TIC Library : C:\Database\NIST20.L
 TIC Integration Parameters: LSCINT.P



Library Search Compound Report

Data Path : Z:\voasrv\HPCHEM1\MSVOA_U\Data\VU081122\
Data File : VU050271.D
Acq On : 12 Aug 2022 10:46
Operator : SY/MD
Sample : N4096-06
Misc : 25.0mL/MSVOA_U/WATER
ALS Vial : 8 Sample Multiplier: 1

Instrument :
MSVOA_U
ClientSampleId :
GBJM8

Quant Method : Z:\voasrv\HPCHEM1\MSVOA_U\Method\SFAMUTR080422WMA.M
Quant Title : TRACE VOA SFAM1.0

TIC Library : C:\Database\NIST20.L
TIC Integration Parameters: LSCINT.P

No Library Search Compounds Detected

Data Path : Z:\voasrv\HPCHEM1\MSVOA_U\Data\VU081122\
Data File : VU050271.D
Acq On : 12 Aug 2022 10:46
Operator : SY/MD
Sample : N4096-06
Misc : 25.0mL/MSVOA_U/WATER
ALS Vial : 8 Sample Multiplier: 1

Instrument :
MSVOA_U
ClientSampleId :
GBJM8

Quant Method : Z:\voasrv\HPCHEM1\MSVOA_U\Method\SFAMUTR080422WMA.M
Quant Title : TRACE VOA SFAM1.0

TIC Library : C:\Database\NIST20.L
TIC Integration Parameters: LSCINT.P

TIC Top Hit name	RT	EstConc	Units	Response	--Internal Standard--			
					#	RT	Resp	Conc
