

Data Path : Z:\VOASRV\HPCHEM1\MSVOA U\DATA\VU081418\
 Data File : VU026119.D
 Acq On : 14 Aug 2018 23:10
 Operator : MD/SY
 Sample : J4402-07
 Misc : 5.0mL/MSVOA U/WATER
 ALS Vial : 31 Sample Multiplier: 1

Instrument :
 MSVOA_U
 ClientSampleId :
 A4ZH6

Quant Time: Aug 16 01:57:09 2018
 Quant Method : Z:\VOASRV\HPCHEM1\MSVOA_U\METHOD\SOMULM080918WMA.M
 Quant Title : VOC Analysis
 QLast Update : Thu Aug 16 01:50:34 2018
 Response via : Initial Calibration

Internal Standards	R.T.	QIon	Response	Conc	Units	Dev(Min)
1) 1,4-Difluorobenzene	5.89	114	256800	50.00	ug/L	0.00
28) Chlorobenzene-d5	9.09	117	238768	50.00	ug/L	0.00
60) 1,4-Dichlorobenzene-d4	11.49	152	105765	50.00	ug/L	0.00

System Monitoring Compounds

4) Vinyl Chloride-d3	1.40	65	61851	32.95	ug/L	0.00
Spiked Amount	50.000	Range	60 - 135	Recovery	=	65.90%
7) Chloroethane-d5	1.68	69	57649	38.74	ug/L	0.00
Spiked Amount	50.000	Range	70 - 130	Recovery	=	77.48%
11) 1,1-Dichloroethene-d2	2.27	63	97992	27.47	ug/L	0.00
Spiked Amount	50.000	Range	60 - 125	Recovery	=	54.94%#
21) 2-Butanone-d5	4.18	46	153717	98.25	ug/L	0.00
Spiked Amount	100.000	Range	40 - 130	Recovery	=	98.25%
24) Chloroform-d	4.65	84	166196	41.75	ug/L	0.00
Spiked Amount	50.000	Range	70 - 125	Recovery	=	83.50%
26) 1,2-Dichloroethane-d4	5.31	65	114743	42.67	ug/L	0.00
Spiked Amount	50.000	Range	70 - 125	Recovery	=	85.34%
32) Benzene-d6	5.35	84	306743	41.37	ug/L	0.00
Spiked Amount	50.000	Range	70 - 125	Recovery	=	82.74%
36) 1,2-Dichloropropane-d6	6.33	67	104661	43.63	ug/L	0.00
Spiked Amount	50.000	Range	70 - 120	Recovery	=	87.26%
41) Toluene-d8	7.57	98	271068	38.21	ug/L	0.00
Spiked Amount	50.000	Range	80 - 120	Recovery	=	76.42%#
43) trans-1,3-Dichloropropene-	7.85	79	49526	40.97	ug/L	0.00
Spiked Amount	50.000	Range	60 - 125	Recovery	=	81.94%
47) 2-Hexanone-d5	8.31	63	109574	100.56	ug/L	0.00
Spiked Amount	100.000	Range	45 - 130	Recovery	=	100.56%
57) 1,1,2,2-Tetrachloroethane-	10.43	84	163842	46.70	ug/L	0.00
Spiked Amount	50.000	Range	65 - 120	Recovery	=	93.40%
64) 1,2-Dichlorobenzene-d4	11.86	152	117049	44.89	ug/L	0.00
Spiked Amount	50.000	Range	80 - 120	Recovery	=	89.78%

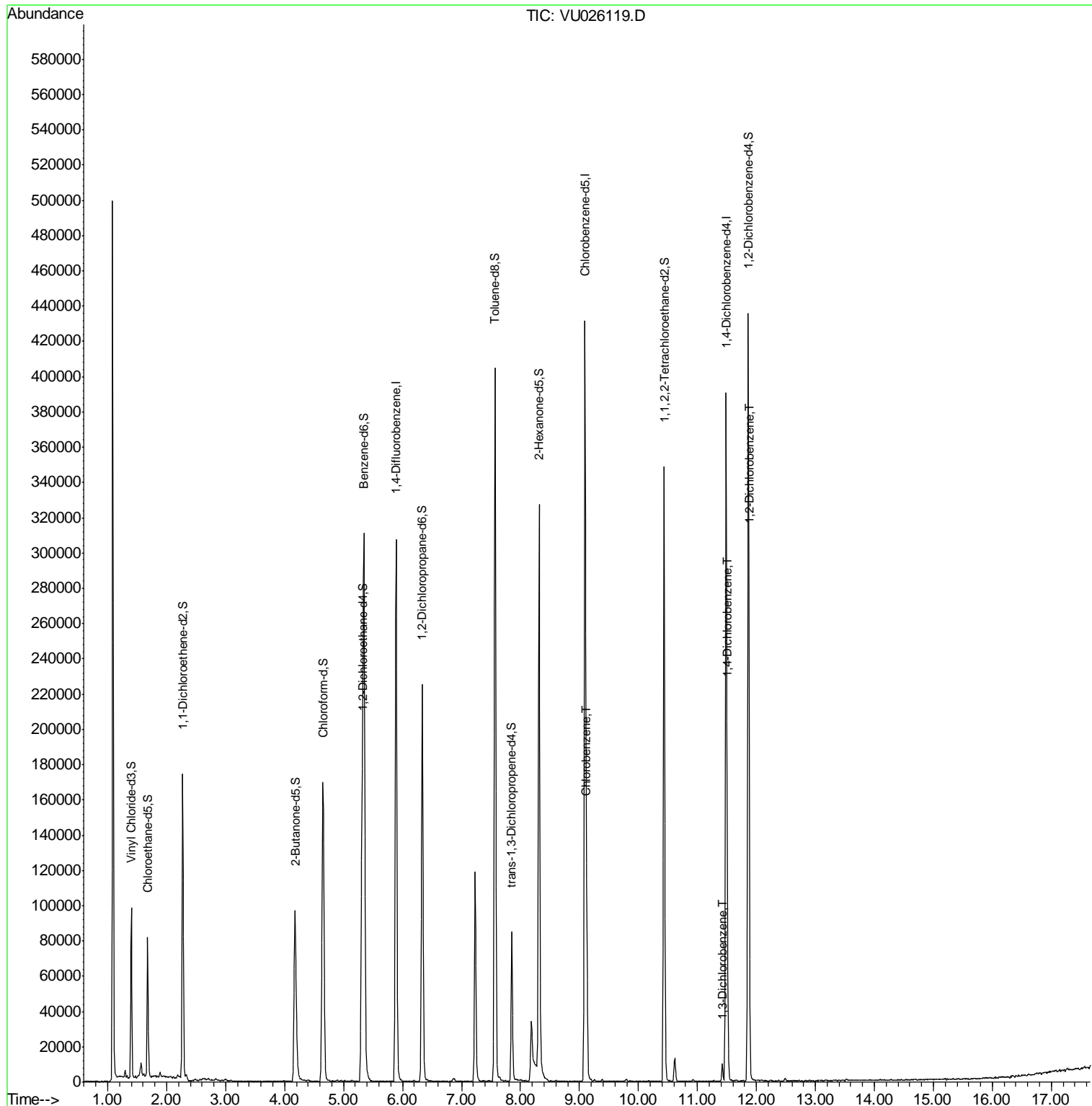
Target Compounds	R.T.	QIon	Response	Conc	Units	Ovalue
51) Chlorobenzene	9.12	112	51017	10.48	ug/L	98
62) 1,3-Dichlorobenzene	11.42	146	4456	1.35	ug/L	92
63) 1,4-Dichlorobenzene	11.51	146	15758	4.57	ug/L	96
65) 1,2-Dichlorobenzene	11.88	146	6693	1.91	ug/L #	88

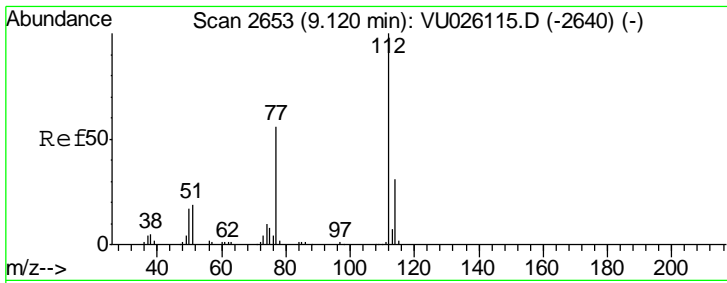
(#) = qualifier out of range (m) = manual integration (+) = signals summed

Data Path : Z:\VOASRV\HPCHEM1\MSVOA U\DATA\VU081418\
 Data File : VU026119.D
 Acq On : 14 Aug 2018 23:10
 Operator : MD/SY
 Sample : J4402-07
 Misc : 5.0mL/MSVOA U/WATER
 ALS Vial : 31 Sample Multiplier: 1

Instrument :
 MSVOA_U
 ClientSampled :
 A4ZH6

Quant Time: Aug 16 01:57:09 2018
 Quant Method : Z:\VOASRV\HPCHEM1\MSVOA_U\METHOD\SOMULM080918WMA.M
 Quant Title : VOC Analysis
 QLast Update : Thu Aug 16 01:50:34 2018
 Response via : Initial Calibration

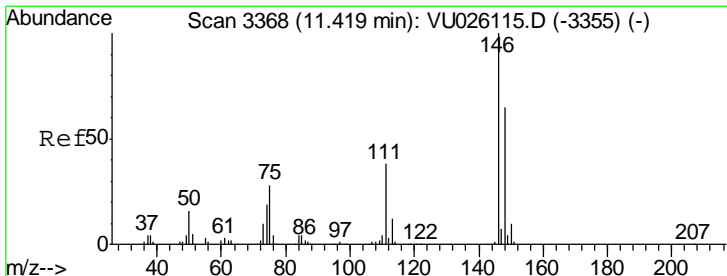
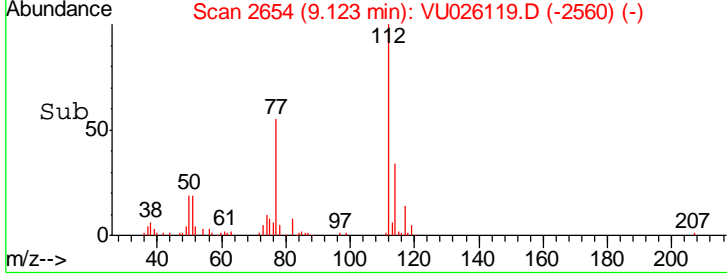
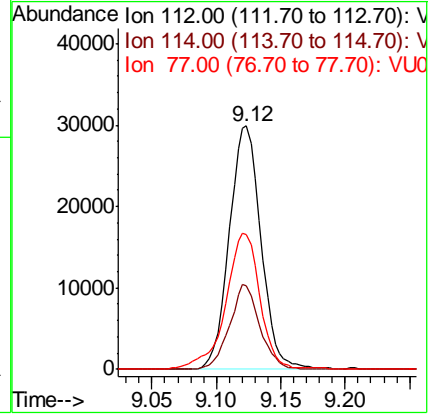
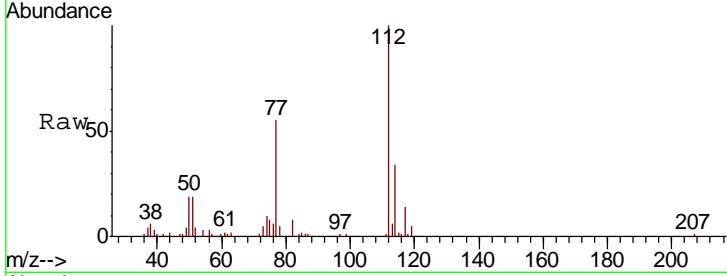




#51
 Chlorobenzene
 Concen: 10.48 ug/L
 RT: 9.12 min Scan# 2654
 Delta R.T. 0.00 min
 Lab File: VU026119.D
 Acq: 14 Aug 2018 23:10

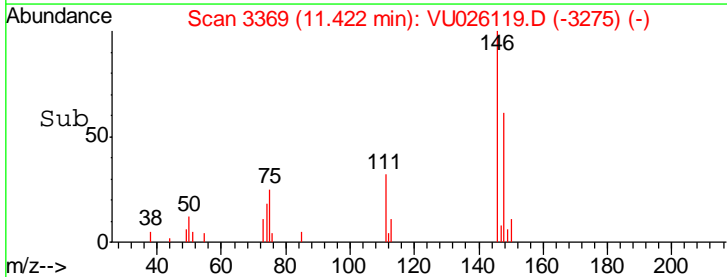
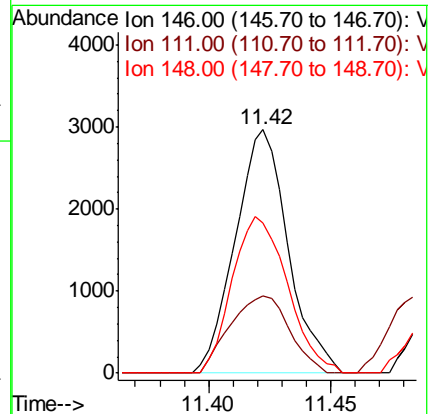
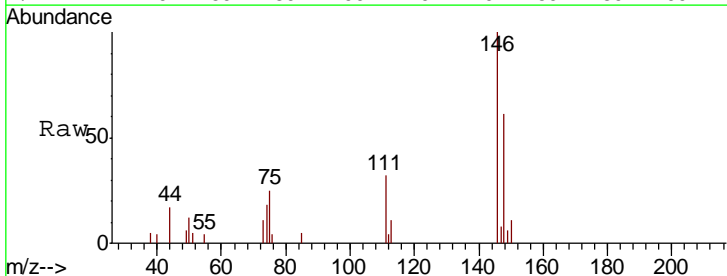
Instrument :
 MSVOA_U
 ClientSampled :
 A4ZH6

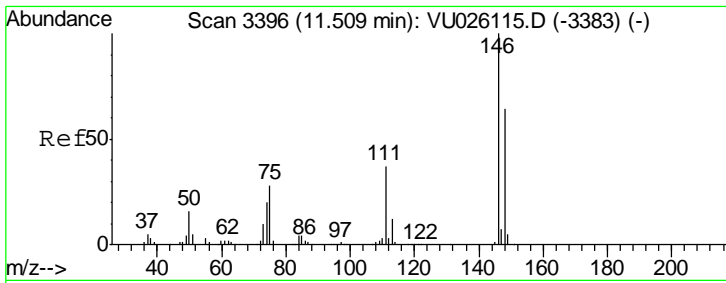
Tgt Ion	Resp	Lower	Upper
112	51017		
114	34.4	22.7	42.3
77	55.5	45.2	67.8



#62
 1,3-Dichlorobenzene
 Concen: 1.35 ug/L
 RT: 11.42 min Scan# 3369
 Delta R.T. 0.00 min
 Lab File: VU026119.D
 Acq: 14 Aug 2018 23:10

Tgt Ion	Resp	Lower	Upper
146	4456		
111	31.5	27.9	51.9
148	61.5	46.0	85.4

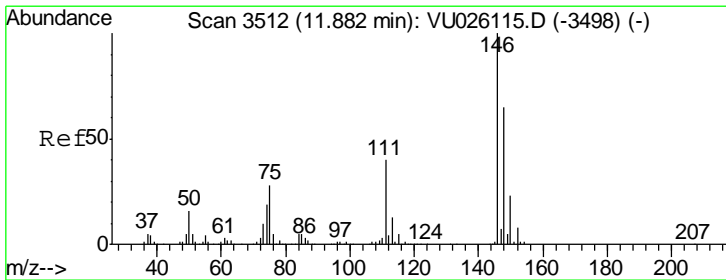
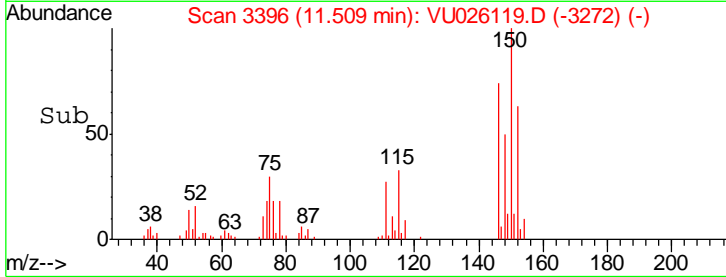
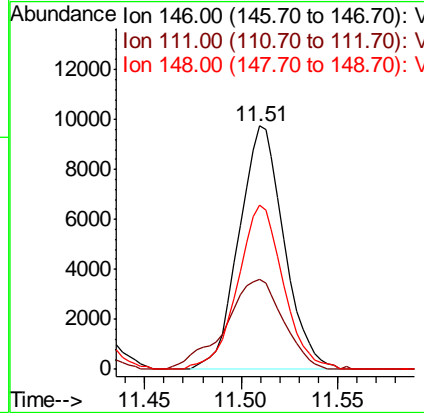
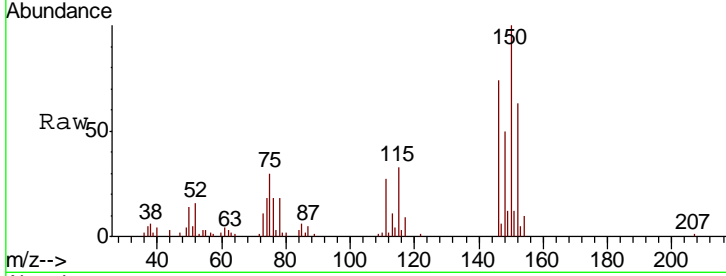




#63
 1,4-Dichlorobenzene
 Concen: 4.57 ug/L
 RT: 11.51 min Scan# 3396
 Delta R.T. 0.00 min
 Lab File: VU026119.D
 Acq: 14 Aug 2018 23:10

Instrument :
 MSVOA_U
 ClientSampled :
 A4ZH6

Tgt Ion	Resp	Lower	Upper
146	15758		
111	37.0	26.4	49.0
148	67.5	43.8	81.4



#65
 1,2-Dichlorobenzene
 Concen: 1.91 ug/L
 RT: 11.88 min Scan# 3512
 Delta R.T. 0.00 min
 Lab File: VU026119.D
 Acq: 14 Aug 2018 23:10

Tgt Ion	Resp	Lower	Upper
146	6693		
111	52.4	32.4	48.6#
148	68.1	50.1	75.1

