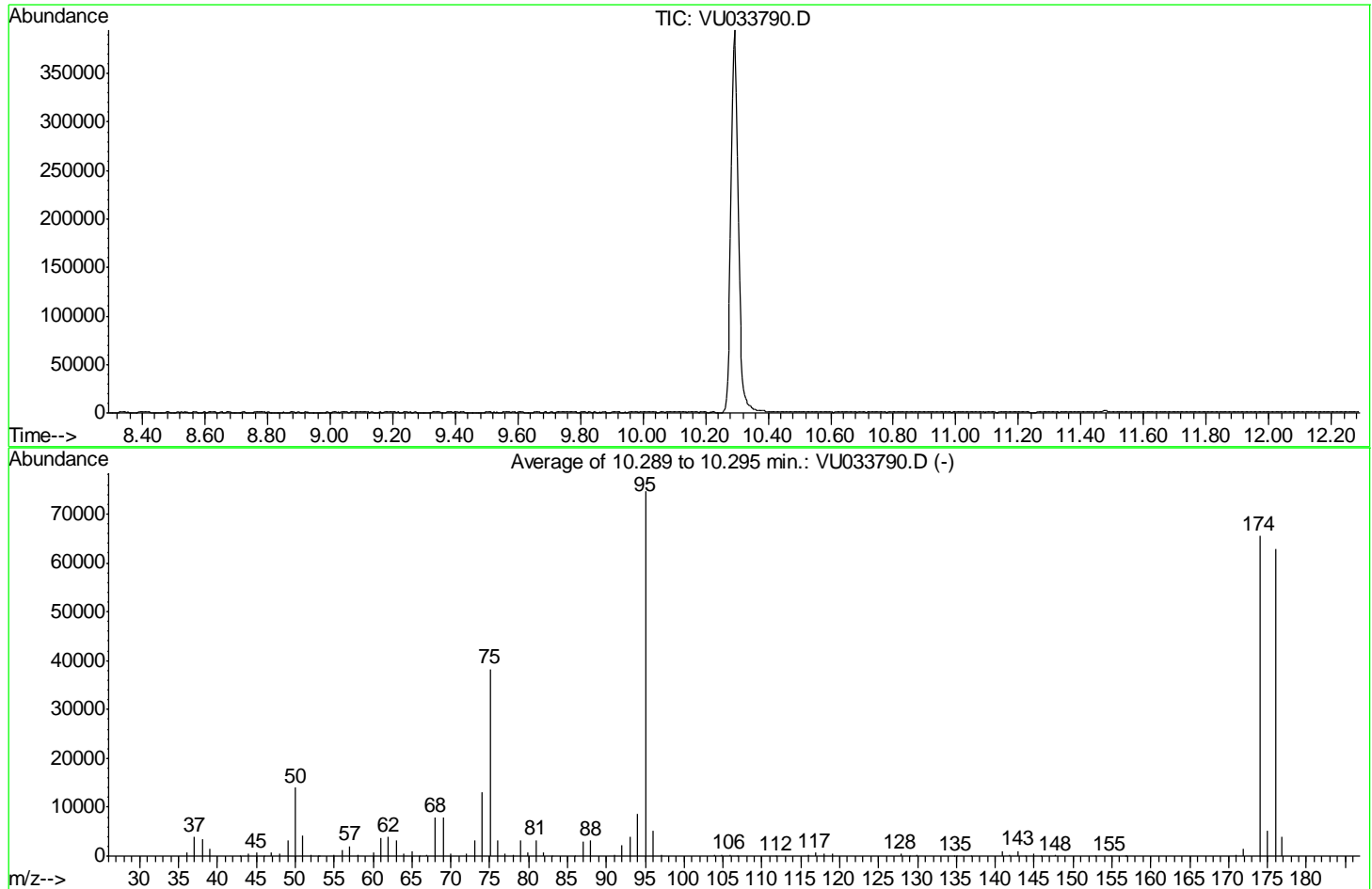


Data Path : Z:\voasrv\HPCHEM1\MSVOA U\Data\VU081419\
 Data File : VU033790.D
 Acq On : 14 Aug 2019 08:54
 Operator : JC/SP
 Sample : BFB56
 Misc : 25.0mL/MSVOA U/WATER
 ALS Vial : 1 Sample Multiplier: 1

Integration File: rteint.p

Method : Z:\VOASRV\HPCHEM1\MSVOA_U\METHOD\SFAMUTR081419WMA.M
 Title : TRACE VOA SOM01.0
 Last Update : Fri Aug 16 13:00:35 2019



AutoFind: Scans 2861, 2862, 2863; Background Corrected with Scan 2848

Target Mass	Rel. to Mass	Lower Limit%	Upper Limit%	Rel. Abn%	Raw Abn	Result Pass/Fail
50	95	15	40	18.7	13974	PASS
75	95	30	80	51.2	38192	PASS
95	95	100	100	100.0	74621	PASS
96	95	5	9	6.9	5182	PASS
173	174	0.00	2	0.0	0	PASS
174	95	50	120	87.8	65536	PASS
175	174	5	9	8.0	5264	PASS
176	174	95	101	95.8	62816	PASS
177	176	5	9	6.2	3880	PASS

m/z	Abundance
36.00	720.0
37.00	3829.0
38.00	3237.0
39.00	1624.0
40.10	256.0
44.00	1029.0
45.00	605.0
46.10	128.0
46.90	938.0
48.00	486.0
49.00	3396.0
50.10	13848.0
51.00	4315.0
52.00	288.0
52.90	105.0
55.00	286.0
56.00	1140.0
57.00	2065.0
58.00	189.0
60.00	691.0
61.10	3753.0
62.00	3817.0
63.00	3188.0
64.00	533.0
65.00	837.0
66.00	127.0
66.90	195.0
68.00	7936.0
69.00	8016.0
70.10	561.0
71.90	397.0
73.00	3336.0
74.00	12678.0
75.00	37488.0
76.00	3404.0
76.90	411.0
78.00	273.0
78.90	3226.0
79.90	737.0
80.90	3171.0
81.90	703.0
87.00	3065.0
88.00	3016.0
91.00	296.0
92.00	2189.0
93.00	3756.0
94.00	8617.0
95.00	73552.0
96.00	5211.0
97.00	200.0
103.80	298.0
104.80	150.0
106.00	312.0
106.80	122.0
115.90	338.0
116.90	605.0
118.00	399.0
119.00	565.0
127.90	500.0
129.00	110.0
129.80	215.0
135.00	143.0
140.90	940.0
141.90	146.0
143.00	987.0
144.90	386.0
146.00	112.0
147.70	130.0
154.80	106.0
156.70	110.0
170.90	184.0
172.00	1321.0
174.00	63208.0
175.00	5114.0
176.00	60480.0
176.90	3889.0

m/z	Abundance
36.00	684.0
37.00	3988.0
38.00	3466.0
39.00	1636.0
40.10	226.0
44.00	1033.0
45.00	713.0
46.00	144.0
46.90	874.0
48.00	585.0
49.00	3483.0
50.00	14404.0
51.00	4340.0
52.00	285.0
53.10	110.0
55.00	272.0
56.00	1135.0
57.00	2129.0
58.00	148.0
60.00	788.0
61.00	3850.0
62.00	4051.0
63.00	3308.0
64.00	580.0
65.00	888.0
66.00	126.0
67.00	240.0
68.00	8244.0
69.00	8116.0
70.10	561.0
72.00	410.0
73.00	3294.0
74.00	13545.0
75.00	39288.0
76.00	3482.0
76.90	470.0
78.10	291.0
78.90	3324.0
79.90	825.0
80.90	3389.0
81.90	678.0
86.00	104.0
87.00	3067.0
88.00	3276.0
91.00	277.0
92.00	2262.0
93.00	3996.0
94.10	9000.0
95.00	76960.0
96.00	5324.0
97.10	165.0
103.90	328.0
104.80	155.0
105.80	347.0
106.90	101.0
111.80	111.0
116.00	349.0
116.90	704.0
117.90	436.0
119.00	588.0
127.80	524.0
128.90	107.0
129.80	262.0
134.90	138.0
136.90	113.0
140.90	999.0
141.90	145.0
143.00	969.0
143.80	101.0
144.90	405.0
145.90	130.0
147.80	149.0
154.80	127.0
156.90	103.0
170.90	276.0
171.90	1424.0
174.00	67560.0
175.00	5396.0
176.00	64976.0
176.90	3999.0

m/z	Abundance
36.00	655.0
37.00	3697.0
38.00	3431.0
39.00	1498.0
40.00	244.0
42.90	113.0
44.10	1016.0
45.00	796.0
45.90	122.0
47.00	729.0
48.00	585.0
49.00	3105.0
50.00	13671.0
51.00	4017.0
52.00	257.0
53.10	119.0
54.90	220.0
56.00	1146.0
57.00	1977.0
58.10	118.0
60.00	841.0
61.00	3831.0
62.00	3899.0
63.00	3271.0
64.00	600.0
65.00	984.0
66.00	116.0
67.00	211.0
68.00	7811.0
69.00	7593.0
70.00	577.0
72.00	393.0
73.10	3168.0
74.00	12916.0
75.10	37800.0
76.00	3031.0
76.90	490.0
78.00	317.0
78.90	3123.0
79.90	787.0
80.90	3186.0
81.90	580.0
83.00	102.0
87.00	2885.0
88.00	3200.0
91.00	255.0
92.00	2119.0
93.00	3769.0
94.10	8585.0
95.00	73352.0
96.00	5011.0
97.10	103.0
103.90	340.0
104.80	143.0
105.90	367.0
111.80	108.0
116.00	299.0
116.90	735.0
117.90	422.0
119.00	529.0
127.80	442.0
128.80	106.0
129.90	298.0
134.70	144.0
136.90	129.0
140.90	974.0
141.80	111.0
142.90	1027.0
144.90	377.0
145.80	118.0
147.80	141.0
152.80	114.0
154.80	153.0
156.90	103.0
171.00	316.0
171.90	1473.0
174.00	65840.0
175.00	5283.0
176.00	62992.0
176.90	3754.0

Scan 2848 (10.247 min): VU033790.D
BFB56

m/z	Abundance
39.90	257.0
44.00	411.0