

Data Path : Z:\VOASRV\HPCHEM1\MSVOA U\DATA\VU081720\
 Data File : VU039881.D
 Acq On : 17 Aug 2020 12:39
 Operator : SY/MD
 Sample : L3517-01
 Misc : 25.0mL/MSVOA U/WATER
 ALS Vial : 7 Sample Multiplier: 1

Instrument :
 MSVOA_U
 ClientSampleId :
 F4L31

Integration Parameters: rteint.p
 Integrator: RTE
 Smoothing : ON
 Sampling : 1
 Start Thrs: 0.1
 Stop Thrs : 0

Filtering: 5
 Min Area: 3 % of largest Peak
 Max Peaks: 100
 Peak Location: TOP

If leading or trailing edge < 100 prefer < Baseline drop else tangent >
 Peak separation: 5

Method : Z:\VOASRV\HPCHEM1\MSVOA_U\METHOD\SOMUTR080320WMA.M
 Title : TRACE VOA SOM01.0

Signal : TIC

peak #	R.T. min	first scan	max scan	last scan	PK TY	peak height	corr. area	corr. % max.	% of total
1	1.610	72	84	100	rBV	1496992	1639374	100.00%	34.299%
2	1.922	173	181	192	rVB	29798	40016	2.44%	0.837%
3	2.581	373	386	399	rBV	44798	73845	4.50%	1.545%
4	3.369	619	631	648	rVB	40991	81178	4.95%	1.698%
5	4.684	1011	1040	1068	rBV2	288026	775472	47.30%	16.224%
6	5.083	1149	1164	1184	rBV	54933	117295	7.15%	2.454%
7	5.742	1347	1369	1392	rBV4	97718	261143	15.93%	5.464%
8	6.263	1513	1531	1546	rBV	101237	184633	11.26%	3.863%
9	6.703	1655	1668	1683	rVB2	67680	131672	8.03%	2.755%
10	7.574	1928	1939	1951	rBV3	34422	58738	3.58%	1.229%
11	7.906	2027	2042	2056	rBV	107445	183202	11.18%	3.833%
12	8.185	2113	2129	2141	rBV4	22988	40666	2.48%	0.851%
13	8.639	2258	2270	2295	rBV	226082	390574	23.82%	8.172%
14	9.420	2500	2513	2528	rBV	149608	241281	14.72%	5.048%
15	10.754	2916	2928	2940	rBV	63967	100408	6.12%	2.101%
16	11.806	3243	3255	3268	rBV	154570	241812	14.75%	5.059%
17	12.185	3362	3373	3386	rVB	136152	218380	13.32%	4.569%

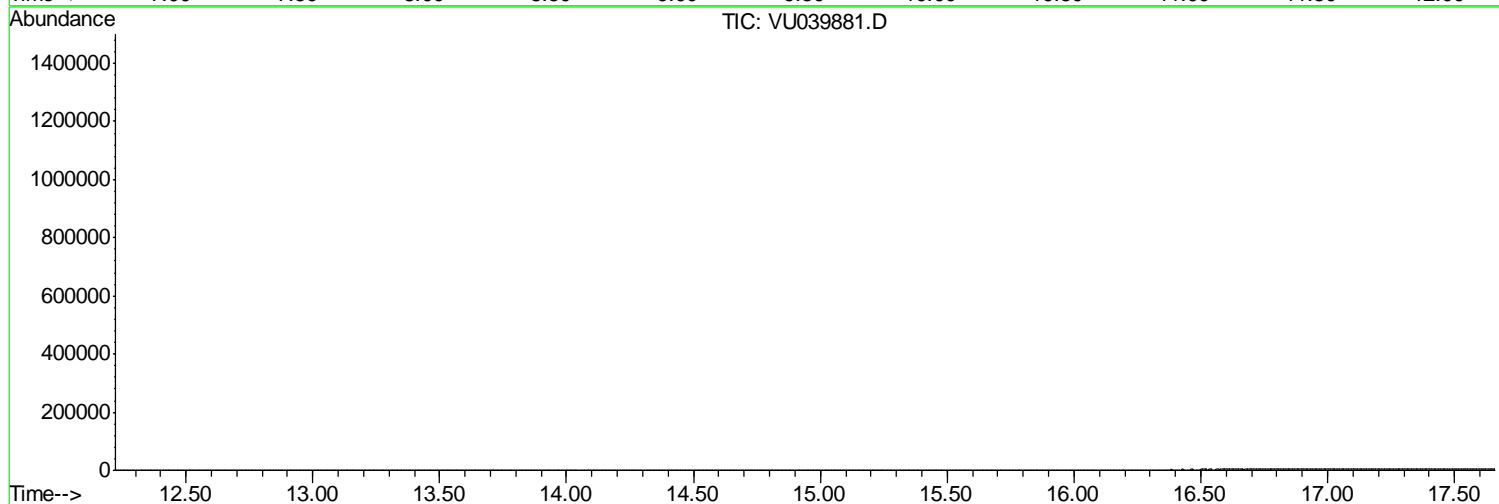
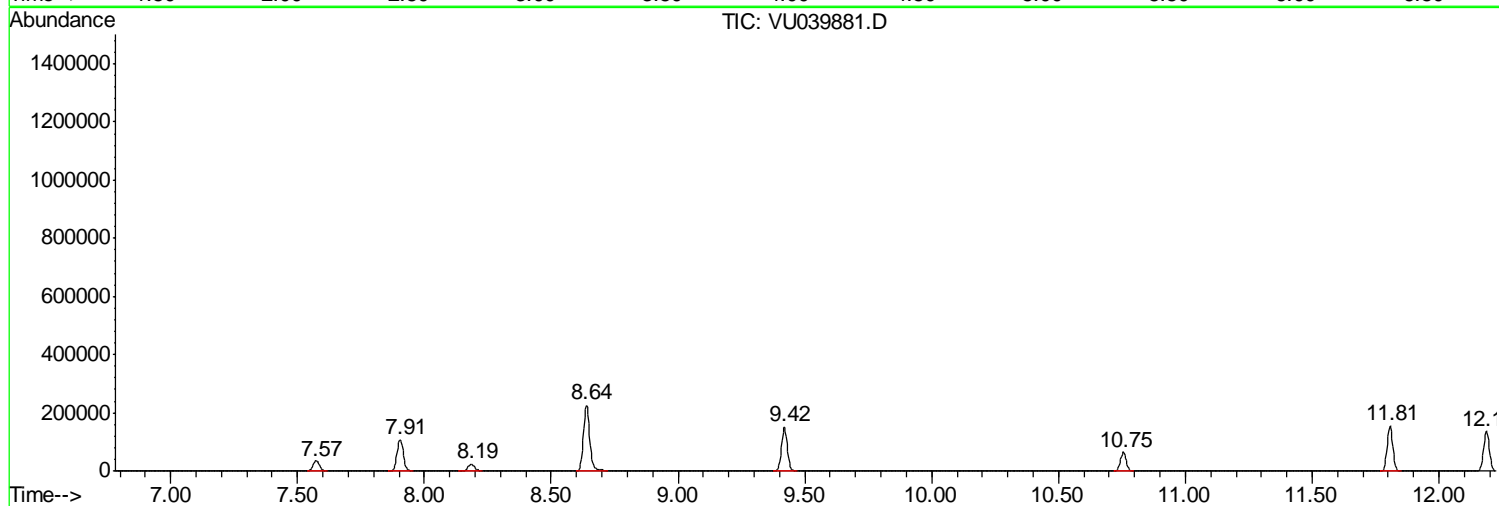
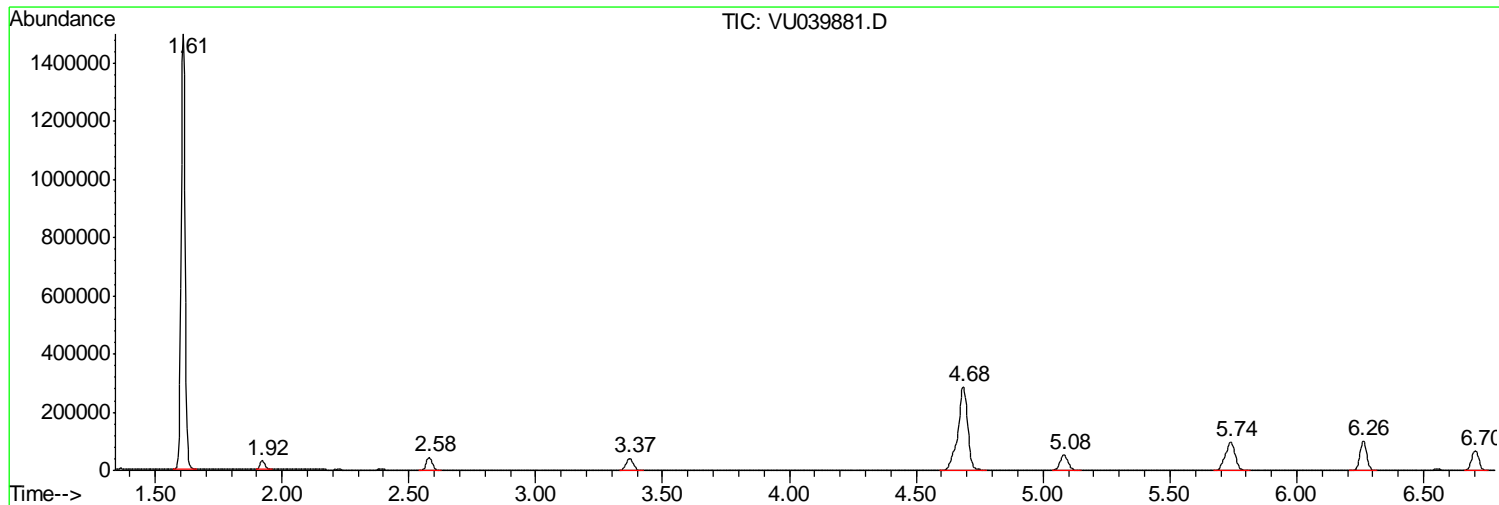
Sum of corrected areas: 4779689

Data Path : Z:\VOASRV\HPCHEM1\MSVOA U\DATA\VU081720\
Data File : VU039881.D
Acq On : 17 Aug 2020 12:39
Operator : SY/MD
Sample : L3517-01
Misc : 25.0mL/MSVOA U/WATER
ALS Vial : 7 Sample Multiplier: 1

Instrument :
MSVOA_U
ClientSampleId :
F4L31

Quant Method : Z:\VOASRV\HPCHEM1\MSVOA_U\METHOD\SOMUTR080320WMA.M
Quant Title : TRACE VOA SOM01.0

TIC Library : C:\DATABASE\NIST11.L
TIC Integration Parameters: LSCINT.P



Data Path : Z:\VOASRV\HPCHEM1\MSVOA_U\DATA\VU081720\
Data File : VU039881.D
Acq On : 17 Aug 2020 12:39
Operator : SY/MD
Sample : L3517-01
Misc : 25.0mL/MSVOA_U/WATER
ALS Vial : 7 Sample Multiplier: 1

Instrument :
MSVOA_U
ClientSampled :
F4L31

Quant Method : Z:\VOASRV\HPCHEM1\MSVOA_U\METHOD\SOMUTR080320WMA.M
Quant Title : TRACE VOA SOM01.0

TIC Library : C:\DATABASE\NIST11.L
TIC Integration Parameters: LSCINT.P

No Library Search Compounds Detected

Data Path : Z:\VOASRV\HPCHEM1\MSVOA_U\DATA\VU081720\
Data File : VU039881.D
Acq On : 17 Aug 2020 12:39
Operator : SY/MD
Sample : L3517-01
Misc : 25.0mL/MSVOA_U/WATER
ALS Vial : 7 Sample Multiplier: 1

Instrument :
MSVOA_U
ClientSampleId :
F4L31

Quant Method : Z:\VOASRV\HPCHEM1\MSVOA_U\METHOD\SOMUTR080320WMA.M
Quant Title : TRACE VOA SOM01.0

TIC Library : C:\DATABASE\NIST11.L
TIC Integration Parameters: LSCINT.P

TIC Top Hit name	RT	EstConc	Units	Response	--Internal Standard--			
					#	RT	Resp	Conc
