

Data Path : Z:\VOASRV\HPCHEM1\MSVOA U\DATA\VU082018\  
 Data File : VU026212.D  
 Acq On : 20 Aug 2018 16:46  
 Operator : MD/SY  
 Sample : J4045-07DL 5X  
 Misc : 25.0mL/MSVOA U/WATER  
 ALS Vial : 15 Sample Multiplier: 1

Instrument :  
 MSVOA\_U  
 ClientSampleId :  
 PT-RVOA-WSDL

Quant Time: Aug 21 08:39:07 2018  
 Quant Method : Z:\VOASRV\HPCHEM1\MSVOA U\METHOD\524U082018DW.M  
 Quant Title : METHOD 524.2 VOLATILES DRINKING WATER  
 QLast Update : Mon Aug 20 13:35:41 2018  
 Response via : Initial Calibration

Internal Standards	R.T.	QIon	Response	Conc	Units	Dev(Min)
1) Fluorobenzene	5.75	96	31815	1.00	ug/l	0.00

## System Monitoring Compounds

57) 4-Bromofluorobenzene	10.31	95	10456	0.92	ug/l	0.00
Spiked Amount	1.000		Recovery	=	92.00%	
68) 1,2-Dichlorobenzene-d4	11.86	152	11941	0.90	ug/l	0.00
Spiked Amount	1.000		Recovery	=	90.00%	

## Target Compounds

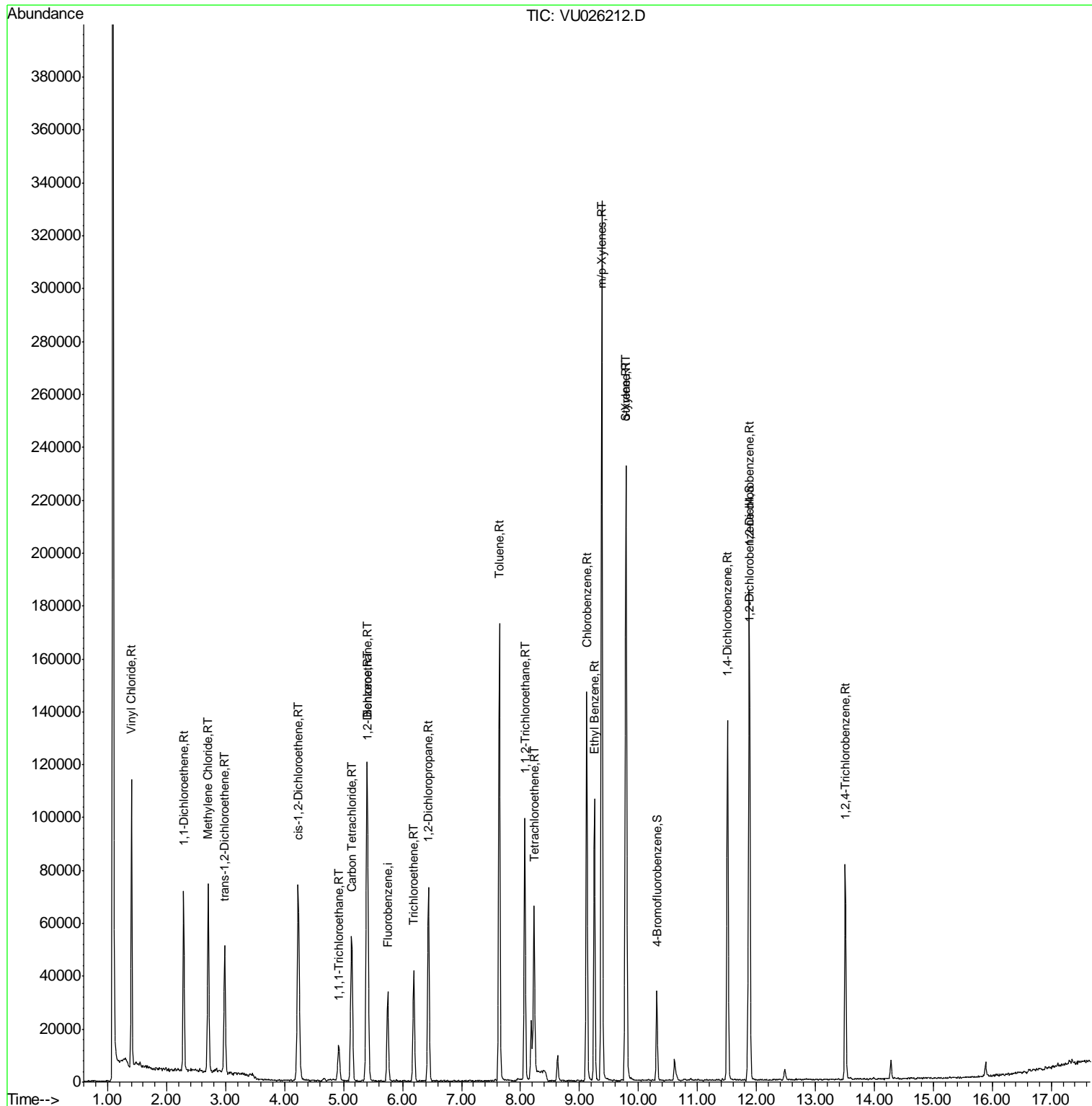
Target Compounds	R.T.	QIon	Response	Conc	Units	Ovalue
4) Vinyl Chloride	1.40	62	64901	6.14	ug/l	97
9) 1,1-Dichloroethene	2.29	96	20760	2.81	ug/l	94
15) Methylene Chloride	2.70	84	29195	3.49	ug/l	93
16) trans-1,2-Dichloroethene	2.98	96	18492	2.16	ug/l	94
22) cis-1,2-Dichloroethene	4.23	96	37234	3.59	ug/l	83
28) 1,1,1-Trichloroethane	4.92	97	10806	0.67	ug/l	97
30) Carbon Tetrachloride	5.14	117	40126	2.65	ug/l	99
35) Benzene	5.39	78	92912	2.53	ug/l	98
36) 1,2-Dichloroethane	5.41	62	45753	4.03	ug/l	99
37) Trichloroethene	6.19	130	15295	1.48	ug/l	95
38) 1,2-Dichloropropane	6.44	63	27878	2.94	ug/l	99
49) Toluene	7.64	92	70515	3.37	ug/l	93
52) 1,1,2-Trichloroethane	8.07	97	30893	4.51	ug/l	94
58) Tetrachloroethene	8.23	164	14142	1.45	ug/l	94
59) Chlorobenzene	9.12	112	80353	3.31	ug/l	99
63) Ethyl Benzene	9.25	91	69765	1.81	ug/l	100
64) m/p-Xylenes	9.38	106	91644	5.97	ug/l	96
65) o-Xylene	9.78	106	43389	2.96	ug/l	99
66) Styrene	9.80	104	56622	2.26	ug/l	96
83) 1,4-Dichlorobenzene	11.51	146	57068	2.50	ug/l	99
85) 1,2-Dichlorobenzene	11.88	146	73375	3.50	ug/l	99
87) 1,2,4-Trichlorobenzene	13.51	180	26147	1.77	ug/l	98

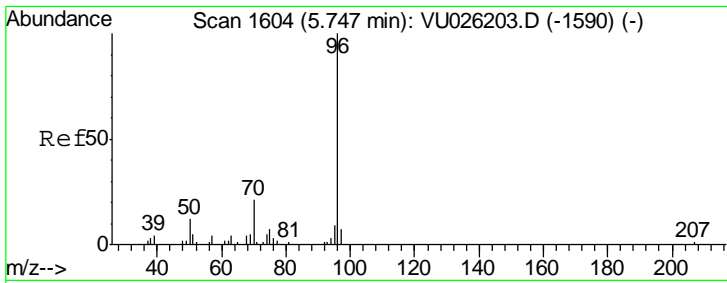
(#) = qualifier out of range (m) = manual integration (+) = signals summed

Data Path : Z:\VOASRV\HPCHEM1\MSVOA U\DATA\VU082018\  
 Data File : VU026212.D  
 Acq On : 20 Aug 2018 16:46  
 Operator : MD/SY  
 Sample : J4045-07DL 5X  
 Misc : 25.0mL/MSVOA U/WATER  
 ALS Vial : 15 Sample Multiplier: 1

**Instrument :**  
 MSVOA\_U  
**Client Sampled :**  
 PT-RVOA-WSDL

Quant Time: Aug 21 08:39:07 2018  
 Quant Method : Z:\VOASRV\HPCHEM1\MSVOA U\METHOD\524U082018DW.M  
 Quant Title : METHOD 524.2 VOLATILES DRINKING WATER  
 QLast Update : Mon Aug 20 13:35:41 2018  
 Response via : Initial Calibration

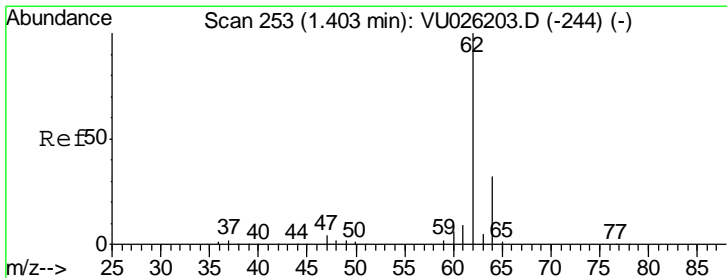
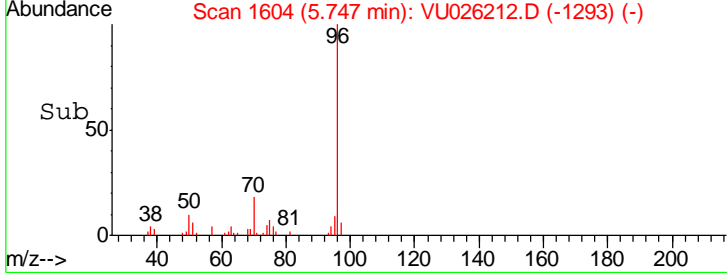
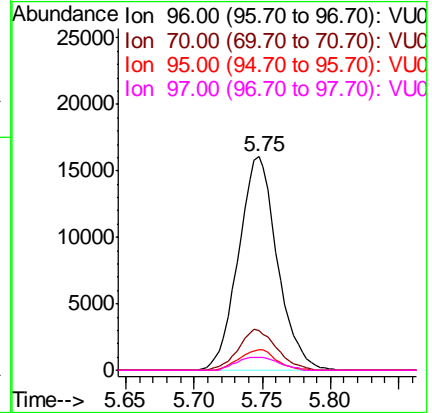
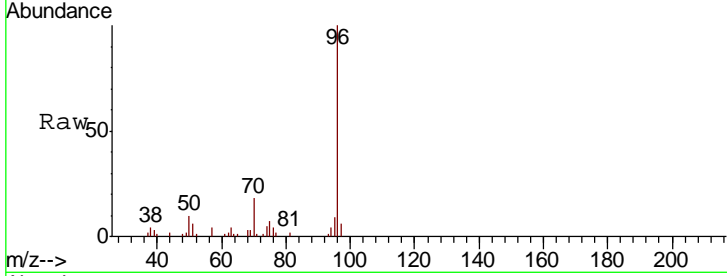




#1  
 Fluorobenzene  
 Concen: 1.00 ug/l  
 RT: 5.75 min Scan# 1604  
 Delta R.T. -0.00 min  
 Lab File: VU026212.D  
 Acq: 20 Aug 2018 16:46

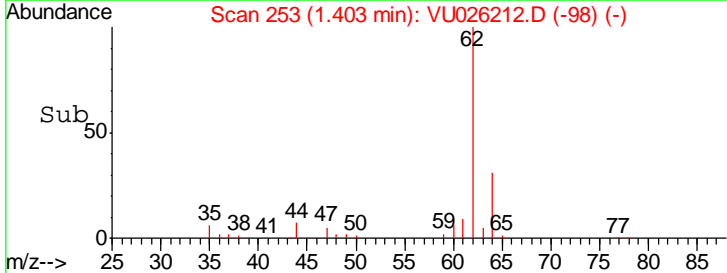
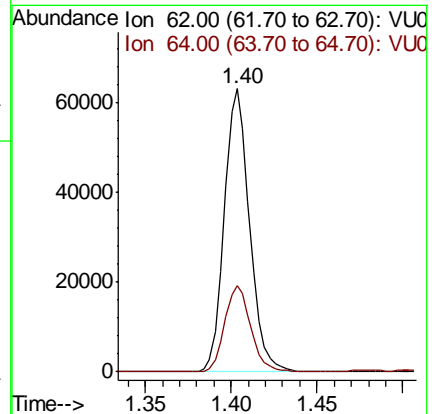
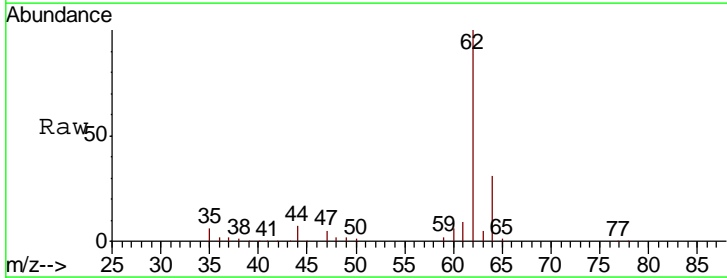
Instrument : MSVOA\_U  
 ClientSampleID : PT-RVOA-WSDL

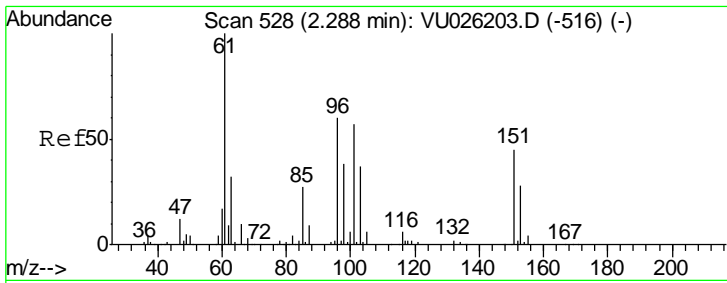
Tgt Ion	Resp	Lower	Upper
96	31815		
70	18.9	16.2	24.4
95	9.1	6.9	10.3
97	6.5	0.0	0.0#



#4  
 Vinyl Chloride  
 Concen: 6.14 ug/l  
 RT: 1.40 min Scan# 253  
 Delta R.T. -0.00 min  
 Lab File: VU026212.D  
 Acq: 20 Aug 2018 16:46

Tgt Ion	Resp	Lower	Upper
62	64901		
64	30.7	25.8	38.8

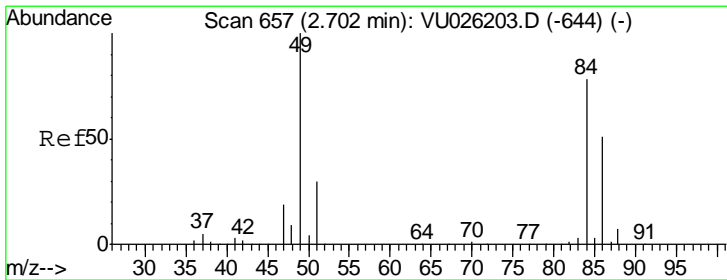
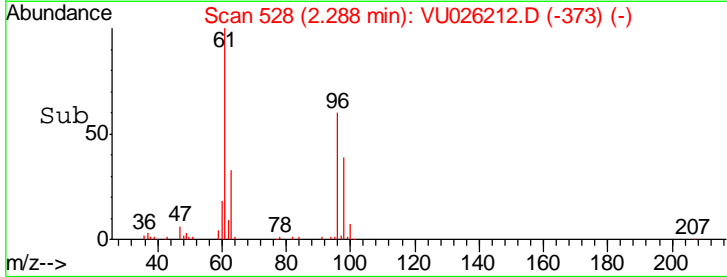
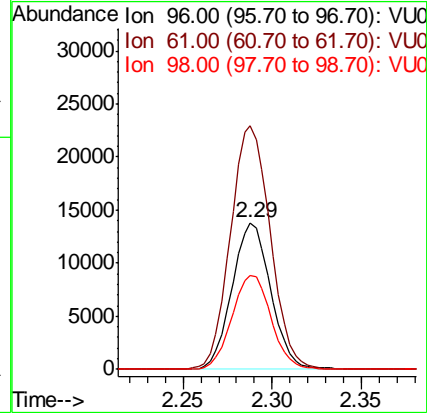
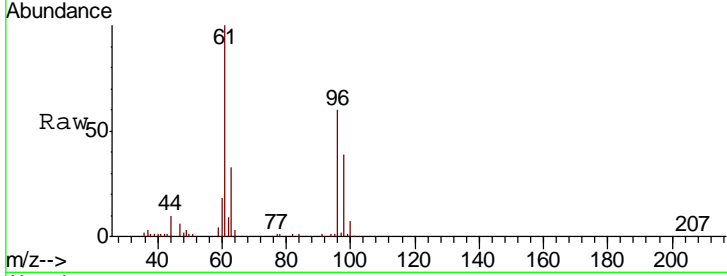




#9  
 1,1-Dichloroethene  
 Concen: 2.81 ug/l  
 RT: 2.29 min Scan# 528  
 Delta R.T. -0.00 min  
 Lab File: VU026212.D  
 Acq: 20 Aug 2018 16:46

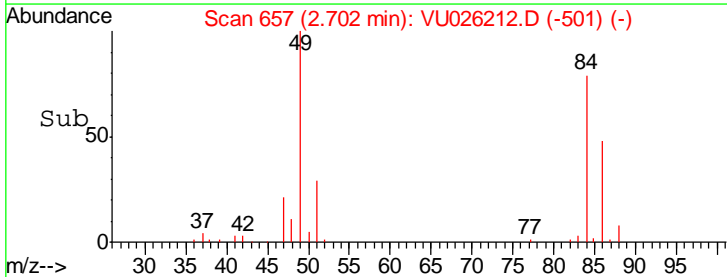
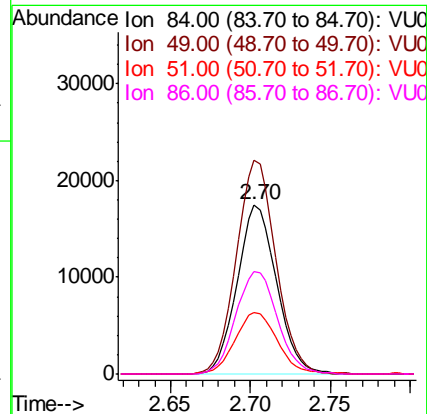
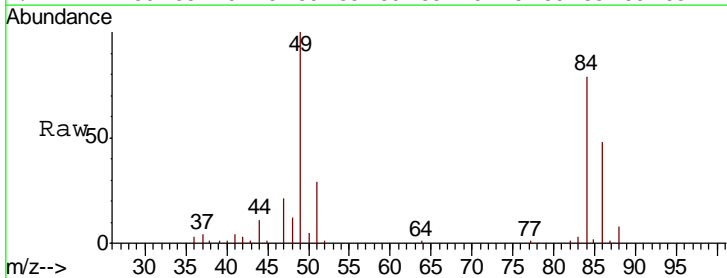
Instrument : MSVOA\_U  
 ClientSampleId : PT-RVOA-WSDL

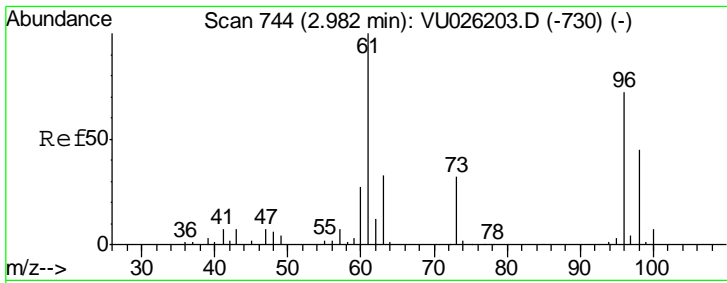
Tgt Ion	Resp	Lower	Upper
96	20760		
Ion Ratio			
96	100		
61	165.7	0.0	526.5
98	64.1	0.0	123.4



#15  
 Methylene Chloride  
 Concen: 3.49 ug/l  
 RT: 2.70 min Scan# 657  
 Delta R.T. 0.00 min  
 Lab File: VU026212.D  
 Acq: 20 Aug 2018 16:46

Tgt Ion	Resp	Lower	Upper
84	29195		
Ion Ratio			
84	100		
49	126.3	108.7	163.1
51	36.6	0.0	82.4
86	60.3	50.7	76.1

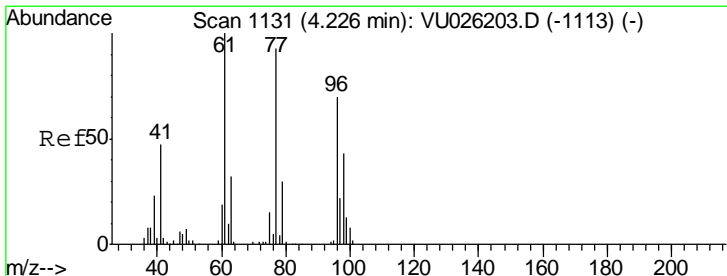
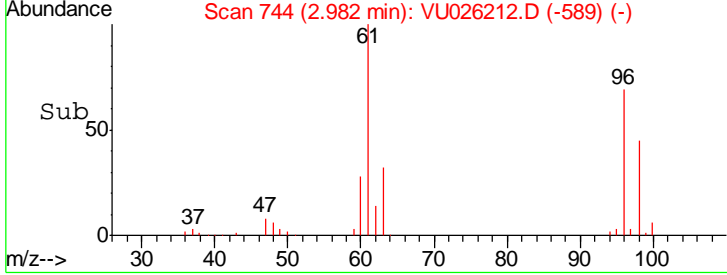
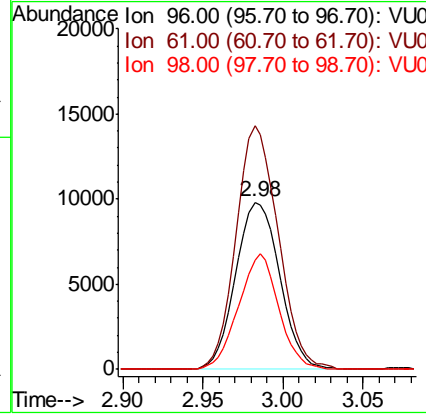
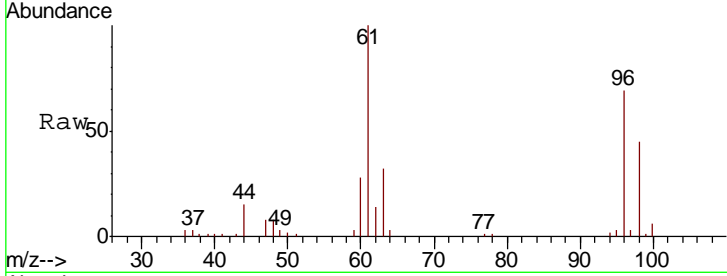




#16  
 trans-1,2-Dichloroethene  
 Concen: 2.16 ug/l  
 RT: 2.98 min Scan# 744  
 Delta R.T. -0.00 min  
 Lab File: VU026212.D  
 Acq: 20 Aug 2018 16:46

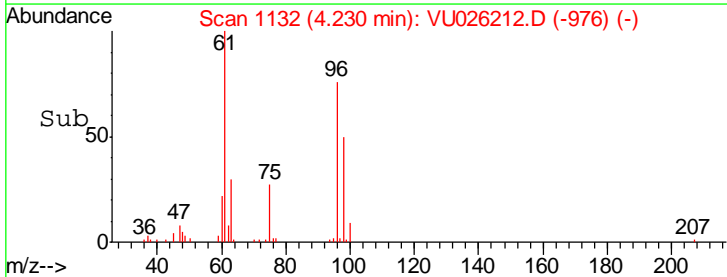
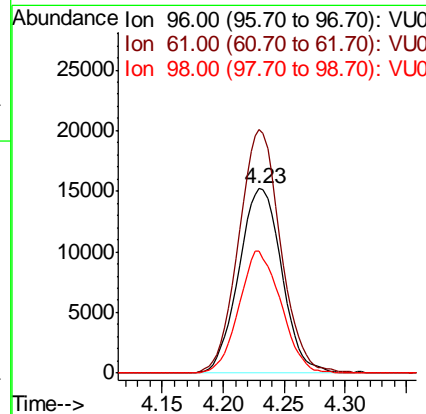
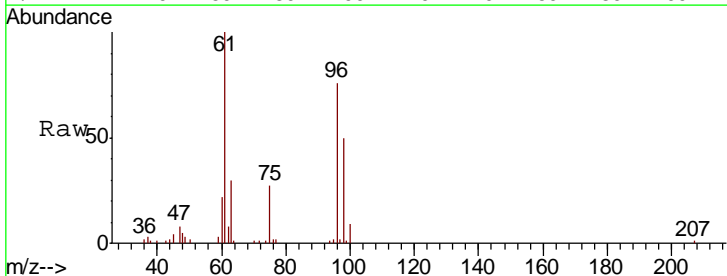
Instrument : MSVOA\_U  
 ClientSampled : PT-RVOA-WSDL

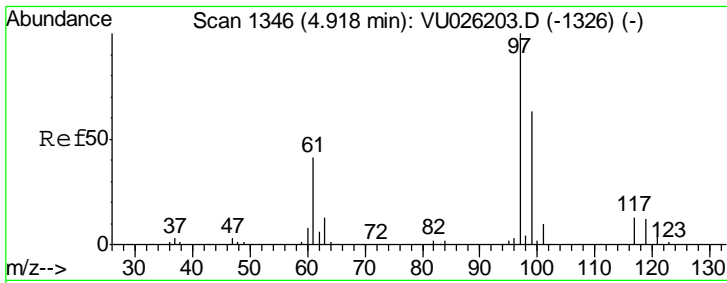
Tgt Ion	Resp	Lower	Upper
96	18492		
61	145.9	123.9	185.9
98	65.7	50.6	76.0



#22  
 cis-1,2-Dichloroethene  
 Concen: 3.59 ug/l  
 RT: 4.23 min Scan# 1132  
 Delta R.T. 0.00 min  
 Lab File: VU026212.D  
 Acq: 20 Aug 2018 16:46

Tgt Ion	Resp	Lower	Upper
96	37234		
61	128.1	0.0	400.5
98	64.4	32.2	96.6

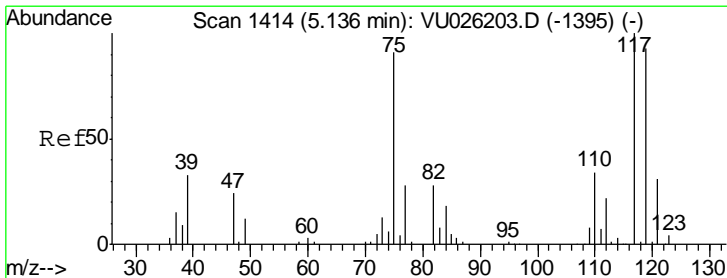
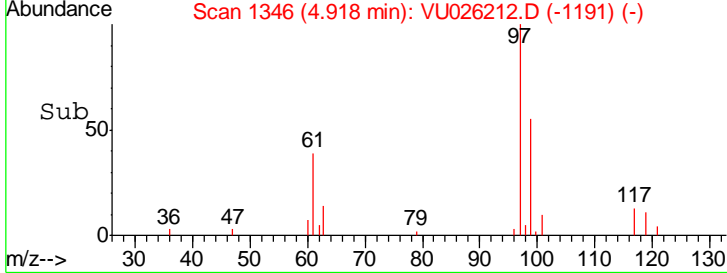
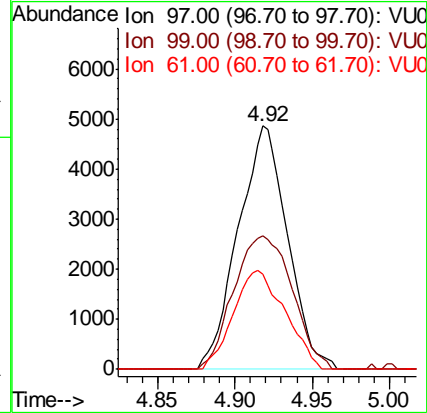
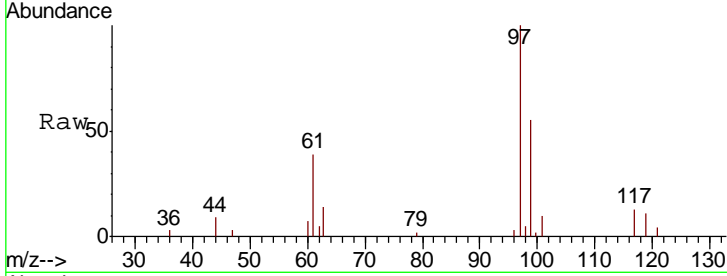




#28  
 1,1,1-Trichloroethane  
 Concen: 0.67 ug/l  
 RT: 4.92 min Scan# 1346  
 Delta R.T. -0.00 min  
 Lab File: VU026212.D  
 Acq: 20 Aug 2018 16:46

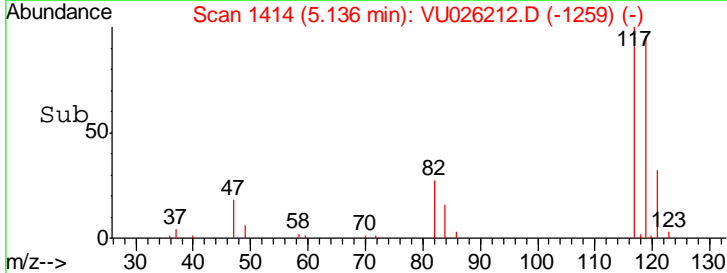
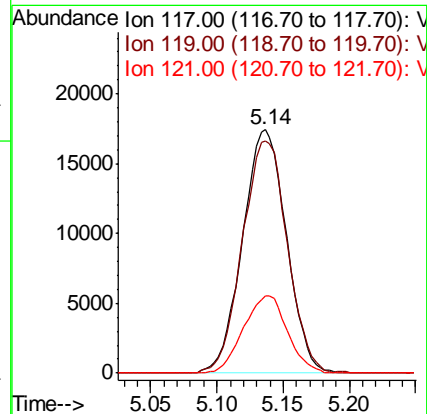
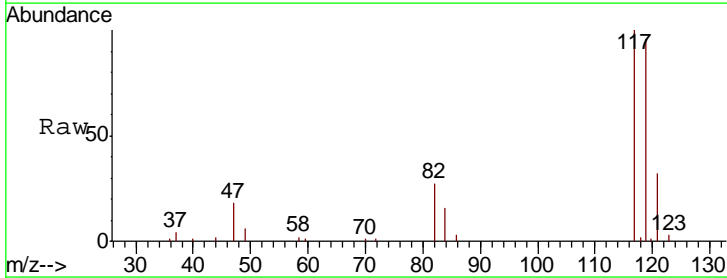
Instrument : MSVOA\_U  
 ClientSampled : PT-RVOA-WSDL

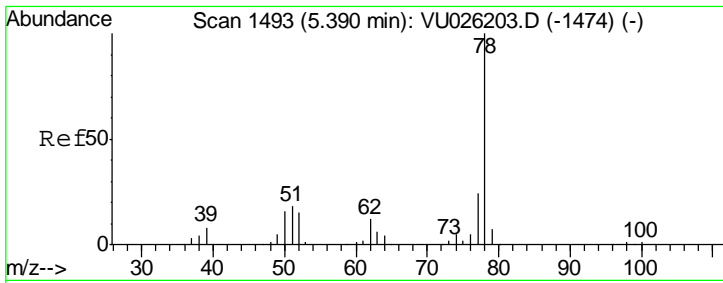
Tgt Ion	Resp	Lower	Upper
97	10806		
99	64.9	32.3	96.9
61	42.3	23.2	69.5



#30  
 Carbon Tetrachloride  
 Concen: 2.65 ug/l  
 RT: 5.14 min Scan# 1414  
 Delta R.T. -0.00 min  
 Lab File: VU026212.D  
 Acq: 20 Aug 2018 16:46

Tgt Ion	Resp	Lower	Upper
117	40126		
119	95.6	77.3	115.9
121	31.8	24.5	36.7

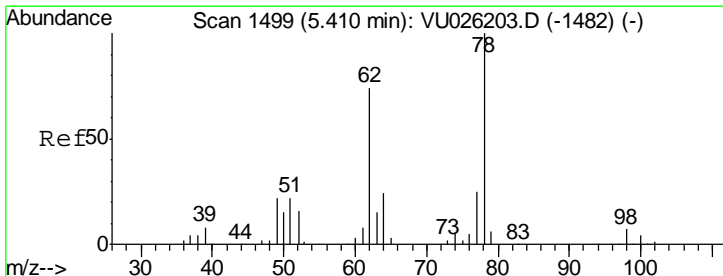
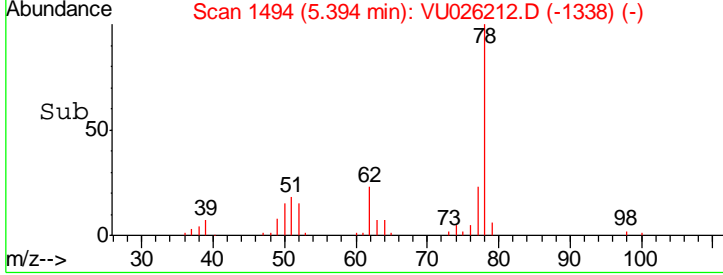
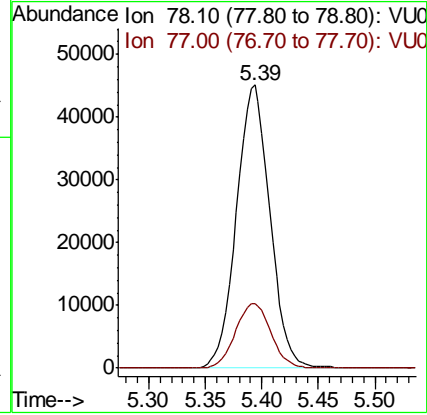
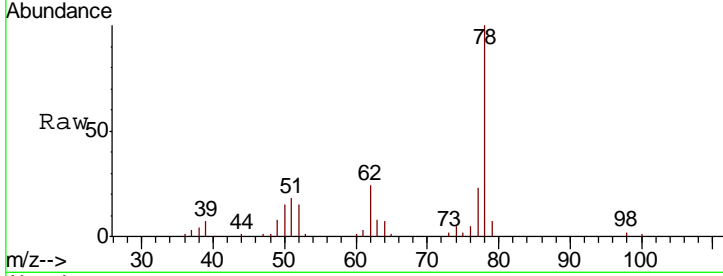




#35  
Benzene  
Concen: 2.53 ug/l  
RT: 5.39 min Scan# 1494  
Delta R.T. 0.00 min  
Lab File: VU026212.D  
Acq: 20 Aug 2018 16:46

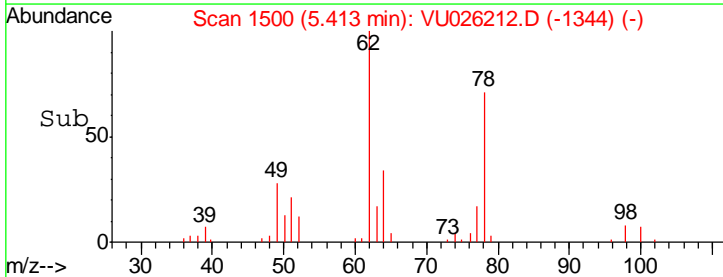
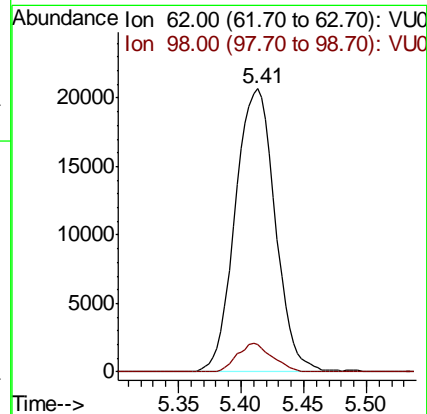
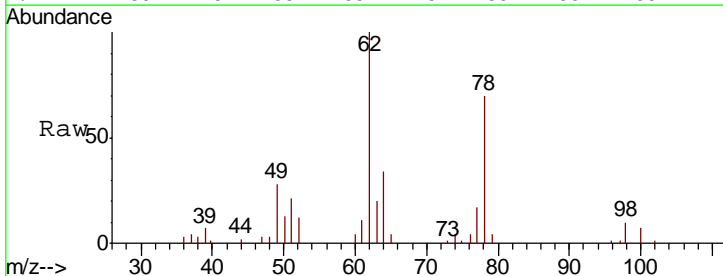
Instrument : MSVOA\_U  
ClientSampled : PT-RVOA-WSDL

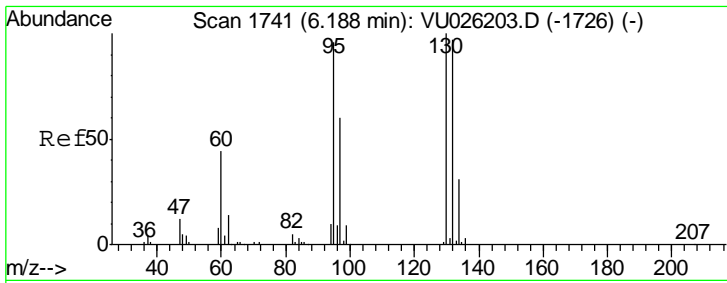
Tgt Ion	Resp	Lower	Upper
78	92912		
77	22.7	19.1	28.7



#36  
1,2-Dichloroethane  
Concen: 4.03 ug/l  
RT: 5.41 min Scan# 1500  
Delta R.T. 0.00 min  
Lab File: VU026212.D  
Acq: 20 Aug 2018 16:46

Tgt Ion	Resp	Lower	Upper
62	45753		
98	8.7	7.2	10.8

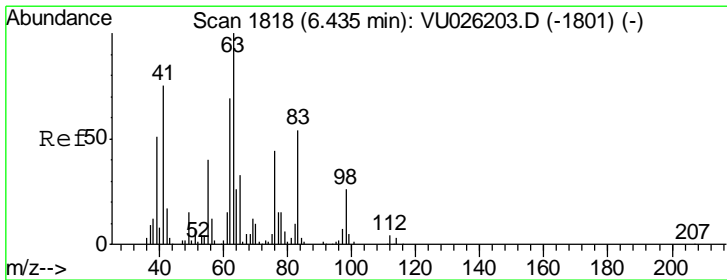
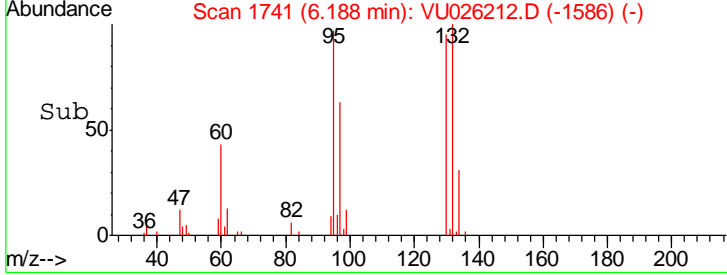
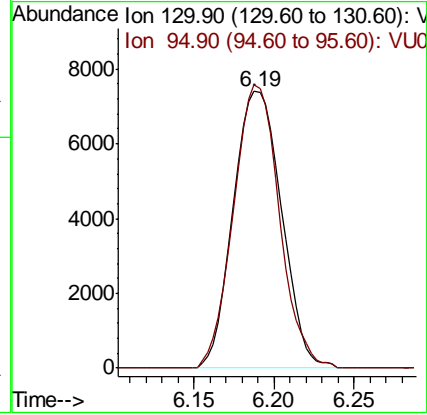
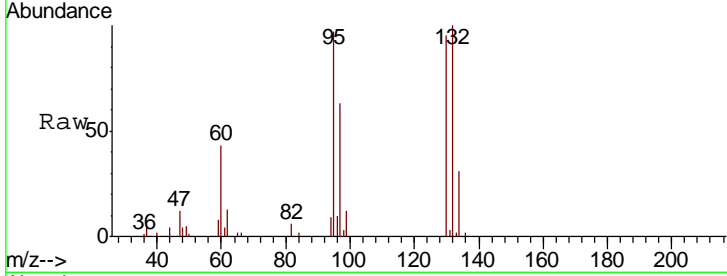




#37  
 Trichloroethene  
 Concen: 1.48 ug/l  
 RT: 6.19 min Scan# 1741  
 Delta R.T. -0.00 min  
 Lab File: VU026212.D  
 Acq: 20 Aug 2018 16:46

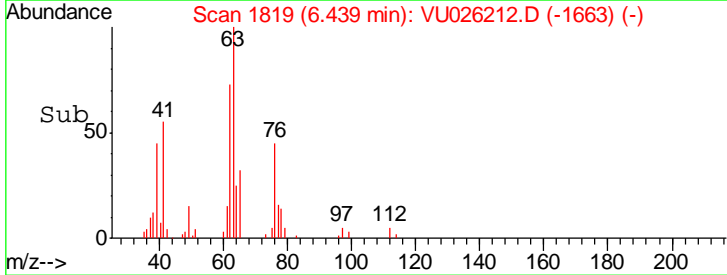
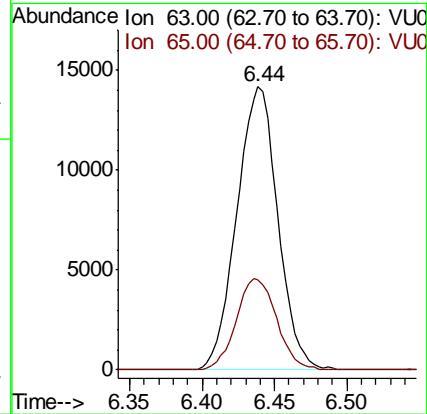
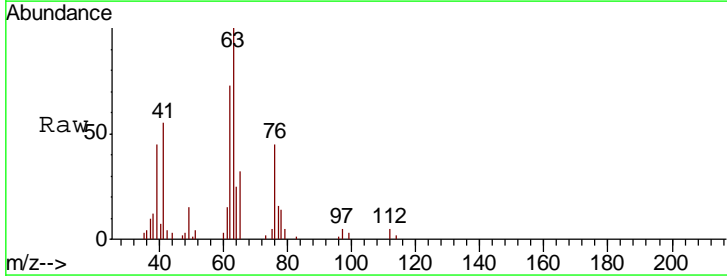
Instrument : MSVOA\_U  
 ClientSampled : PT-RVOA-WSDL

Tgt Ion	Resp	Lower	Upper
130	100		
95	102.2	77.9	116.9

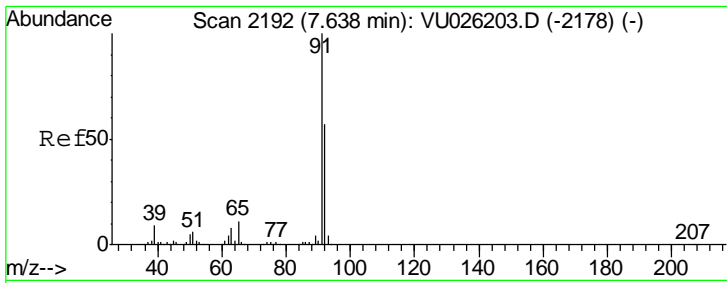


#38  
 1,2-Dichloropropane  
 Concen: 2.94 ug/l  
 RT: 6.44 min Scan# 1819  
 Delta R.T. 0.00 min  
 Lab File: VU026212.D  
 Acq: 20 Aug 2018 16:46

Tgt Ion	Resp	Lower	Upper
63	100		
65	31.9	25.8	38.8



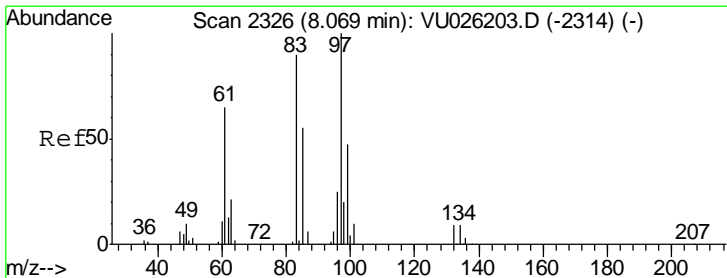
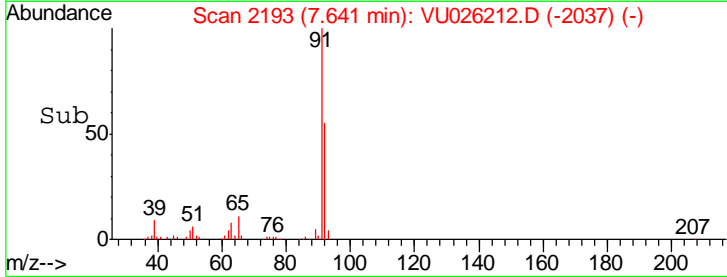
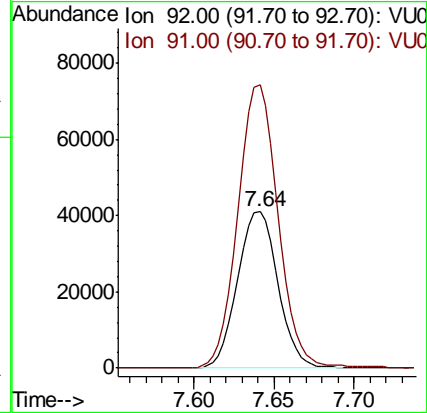
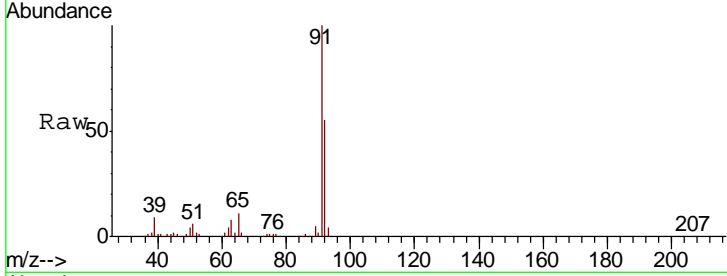




#49  
 Toluene  
 Concen: 3.37 ug/l  
 RT: 7.64 min Scan# 2193  
 Delta R.T. 0.00 min  
 Lab File: VU026212.D  
 Acq: 20 Aug 2018 16:46

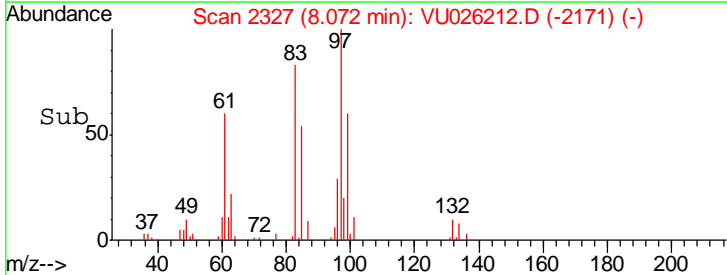
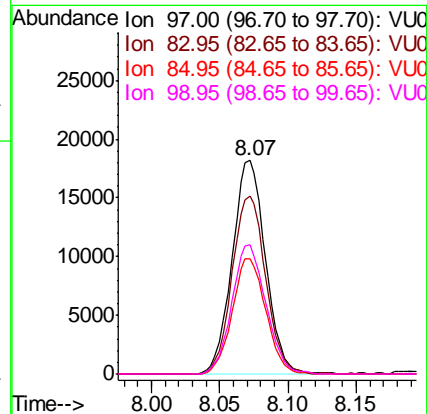
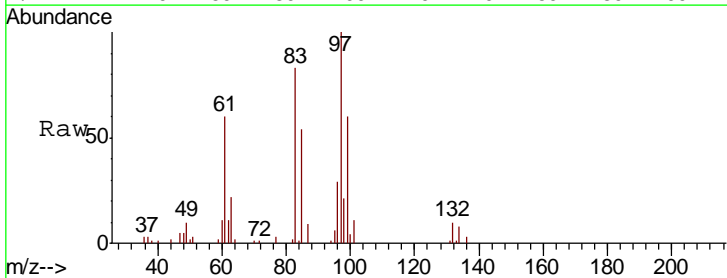
Instrument :  
 MSVOA\_U  
 ClientSampleId :  
 PT-RVOA-WSDL

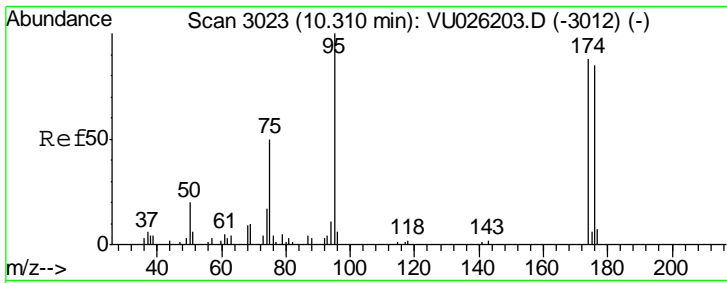
Tgt Ion: 92 Resp: 70515  
 Ion Ratio Lower Upper  
 92 100  
 91 181.1 137.1 205.7



#52  
 1,1,2-Trichloroethane  
 Concen: 4.51 ug/l  
 RT: 8.07 min Scan# 2327  
 Delta R.T. 0.00 min  
 Lab File: VU026212.D  
 Acq: 20 Aug 2018 16:46

Tgt Ion: 97 Resp: 30893  
 Ion Ratio Lower Upper  
 97 100  
 83 83.4 72.6 109.0  
 85 53.7 47.2 70.8  
 99 60.3 50.8 76.2

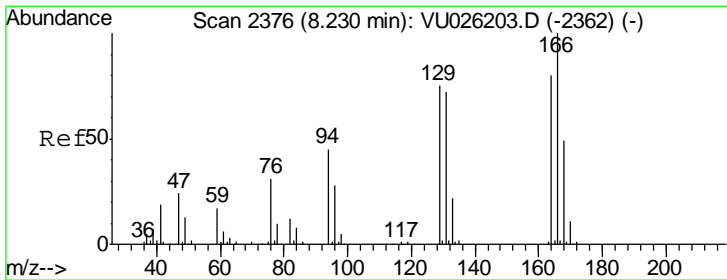
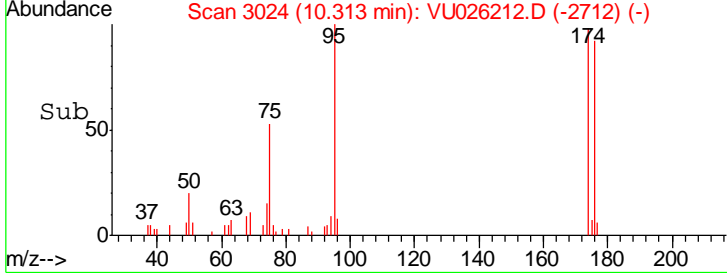
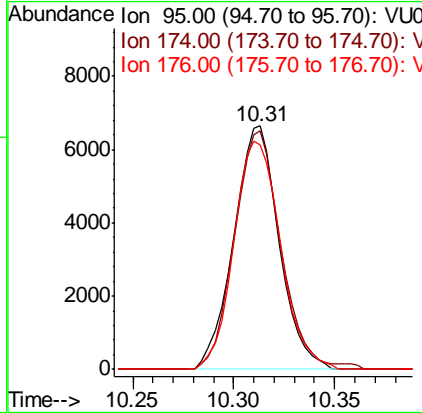
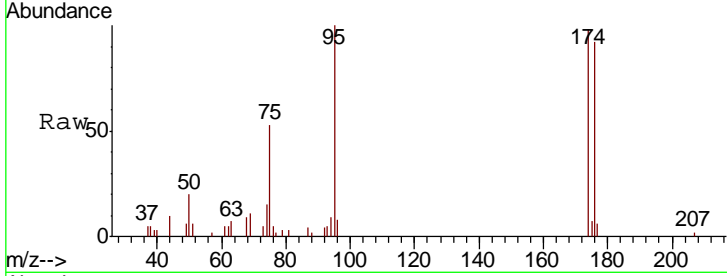




#57  
 4-Bromofluorobenzene  
 Concen: N.D. ug/l  
 RT: 10.31 min Scan# 3024  
 Delta R.T. 0.00 min  
 Lab File: VU026212.D  
 Acq: 20 Aug 2018 16:46

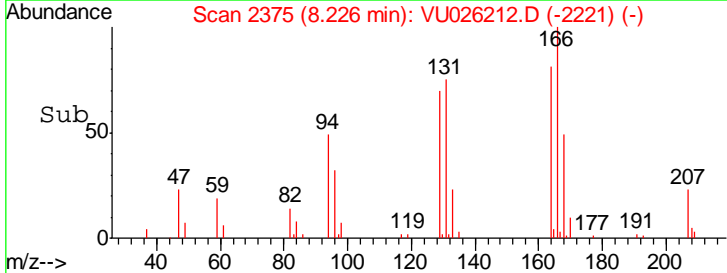
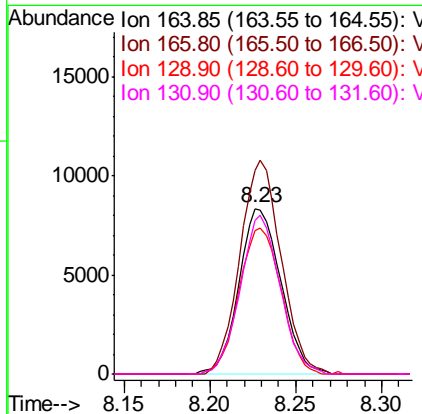
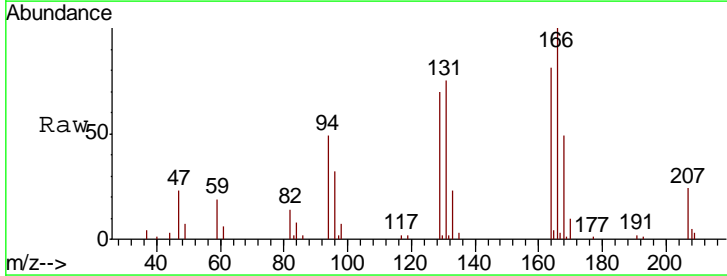
Instrument : MSVOA\_U  
 ClientSampled : PT-RVOA-WSDL

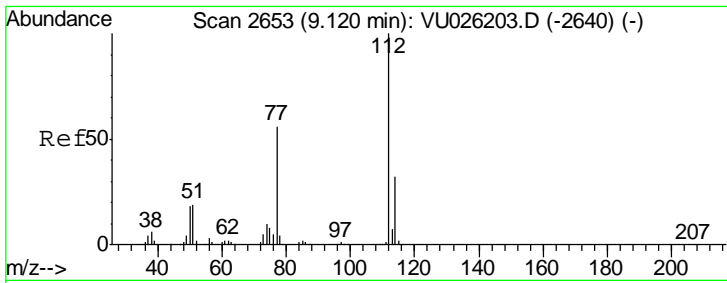
Tgt Ion	Resp	Lower	Upper
95	10456		
174	100.4	65.6	98.4#
176	96.8	62.0	93.0#



#58  
 Tetrachloroethene  
 Concen: 1.45 ug/l  
 RT: 8.23 min Scan# 2375  
 Delta R.T. -0.00 min  
 Lab File: VU026212.D  
 Acq: 20 Aug 2018 16:46

Tgt Ion	Resp	Lower	Upper
164	14142		
166	123.6	104.1	156.1
129	86.6	76.8	115.2
131	93.3	72.6	108.8

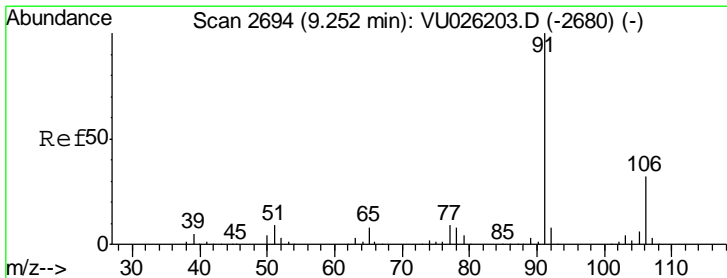
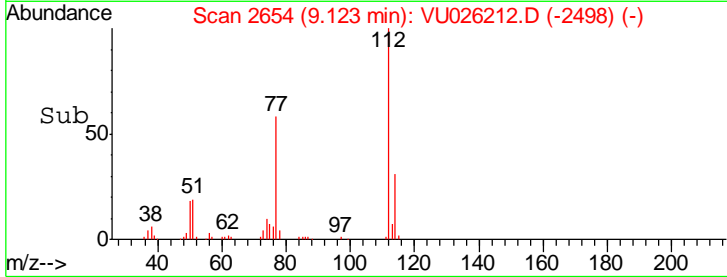
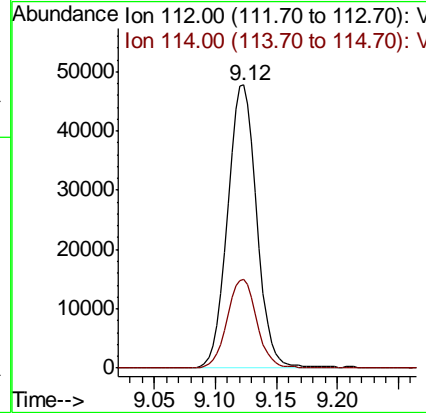
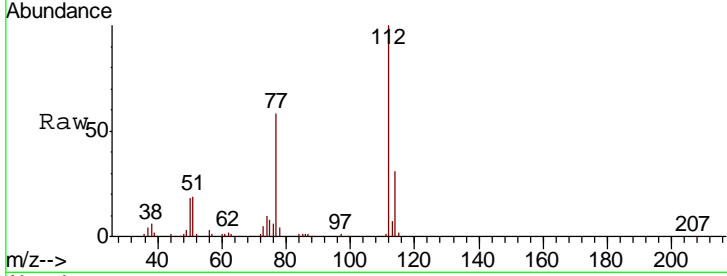




#59  
 Chlorobenzene  
 Concen: 3.31 ug/l  
 RT: 9.12 min Scan# 2654  
 Delta R.T. 0.00 min  
 Lab File: VU026212.D  
 Acq: 20 Aug 2018 16:46

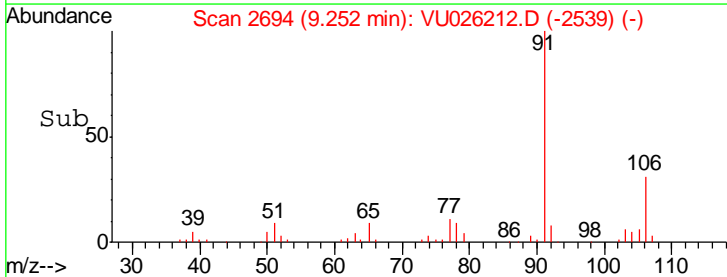
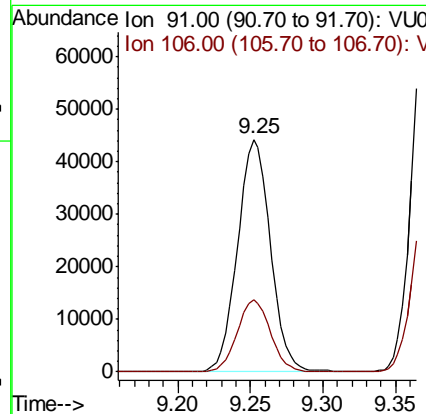
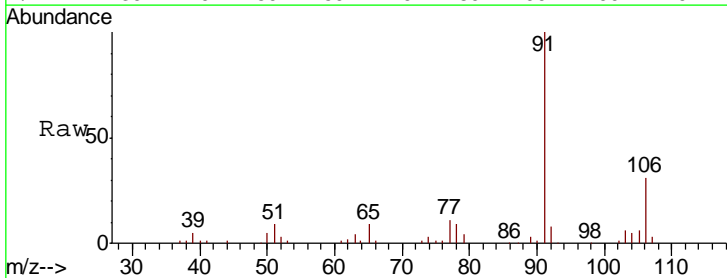
Instrument : MSVOA\_U  
 ClientSampled : PT-RVOA-WSDL

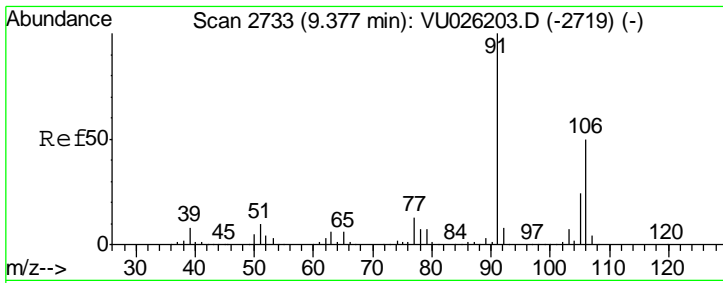
Tgt Ion: 112 Resp: 80353  
 Ion Ratio Lower Upper  
 112 100  
 114 31.5 25.4 38.2



#63  
 Ethyl Benzene  
 Concen: 1.81 ug/l  
 RT: 9.25 min Scan# 2694  
 Delta R.T. -0.00 min  
 Lab File: VU026212.D  
 Acq: 20 Aug 2018 16:46

Tgt Ion: 91 Resp: 69765  
 Ion Ratio Lower Upper  
 91 100  
 106 30.8 24.7 37.1

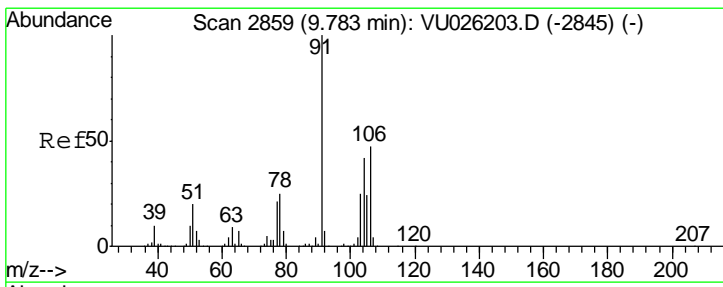
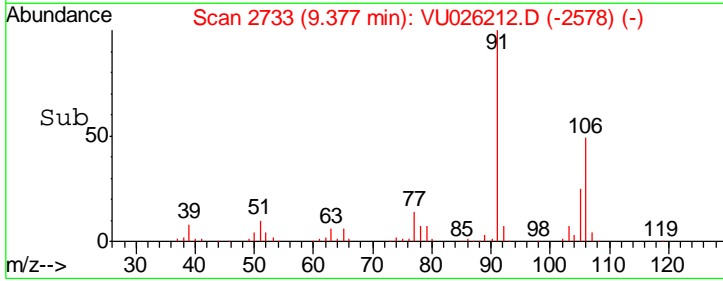
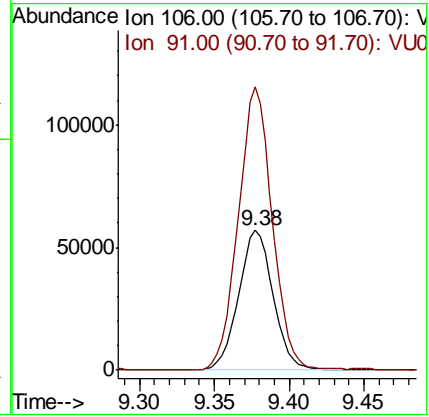
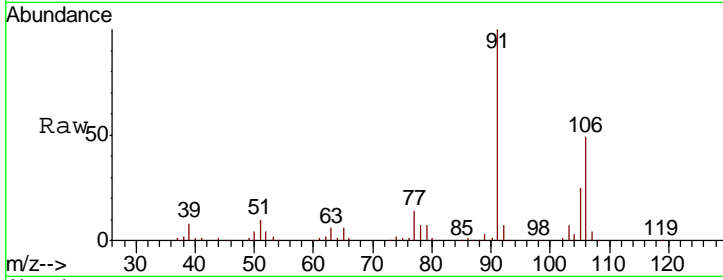




#64  
 m/p-Xylenes  
 Concen: 5.97 ug/l  
 RT: 9.38 min Scan# 2733  
 Delta R.T. -0.00 min  
 Lab File: VU026212.D  
 Acq: 20 Aug 2018 16:46

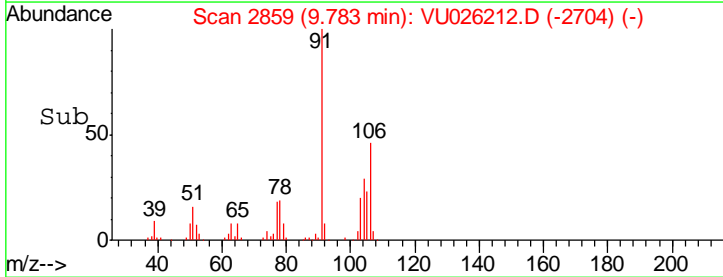
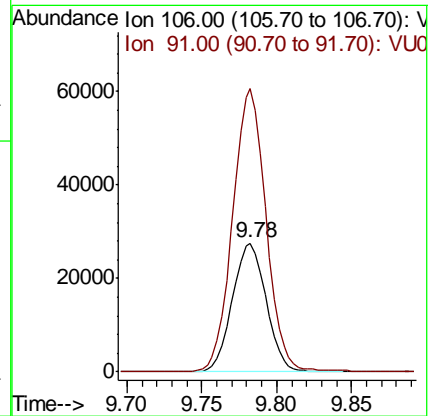
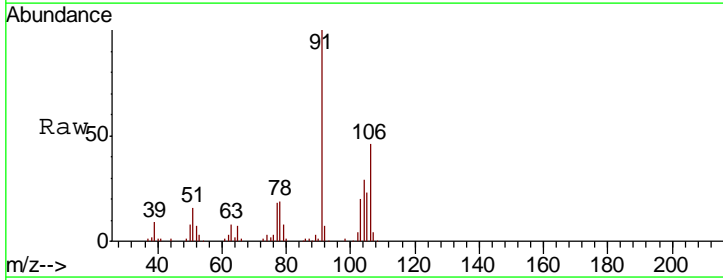
Instrument : MSVOA\_U  
 ClientSampleId : PT-RVOA-WSDL

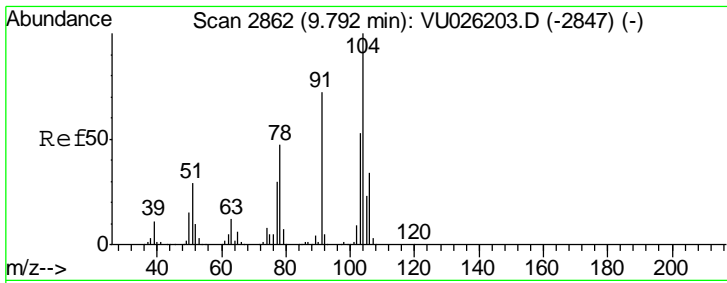
Tgt Ion	Resp	Lower	Upper
106	91644		
91	199.4	164.1	246.1



#65  
 o-Xylene  
 Concen: 2.96 ug/l  
 RT: 9.78 min Scan# 2859  
 Delta R.T. -0.00 min  
 Lab File: VU026212.D  
 Acq: 20 Aug 2018 16:46

Tgt Ion	Resp	Lower	Upper
106	43389		
91	216.8	107.9	323.7

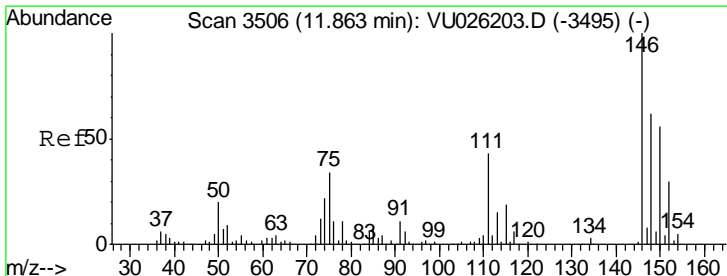
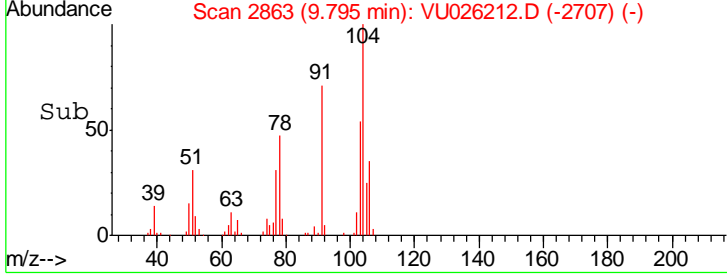
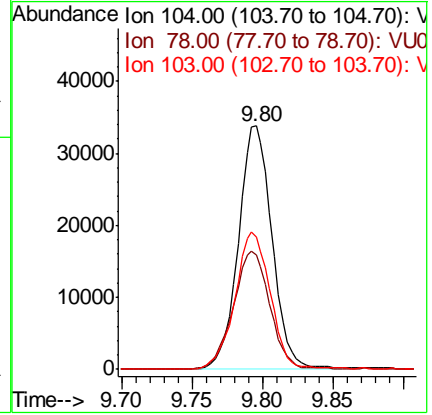
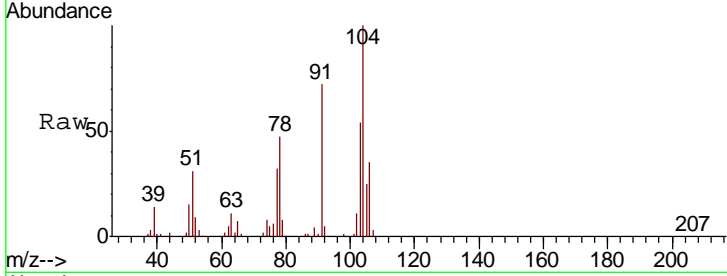




#66  
 Styrene  
 Concen: 2.26 ug/l  
 RT: 9.80 min Scan# 2863  
 Delta R.T. 0.00 min  
 Lab File: VU026212.D  
 Acq: 20 Aug 2018 16:46

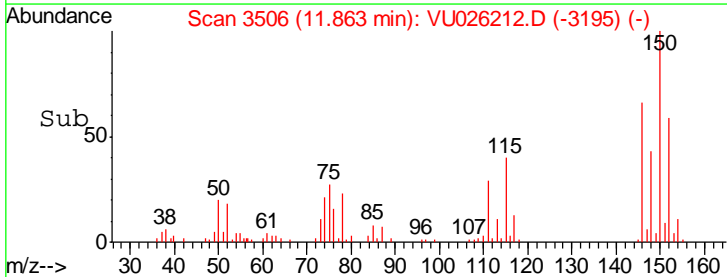
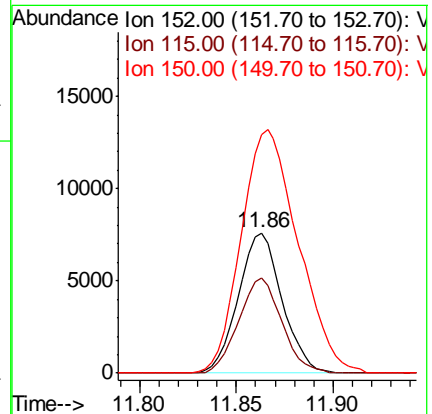
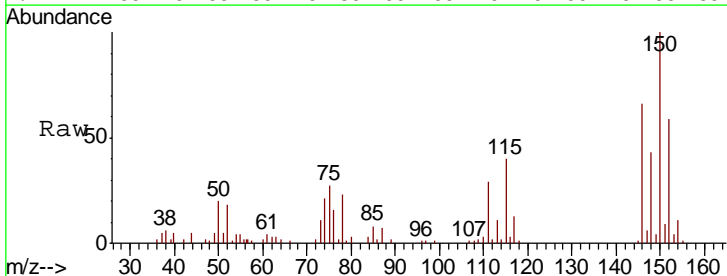
Instrument : MSVOA\_U  
 ClientSampled : PT-RVOA-WSDL

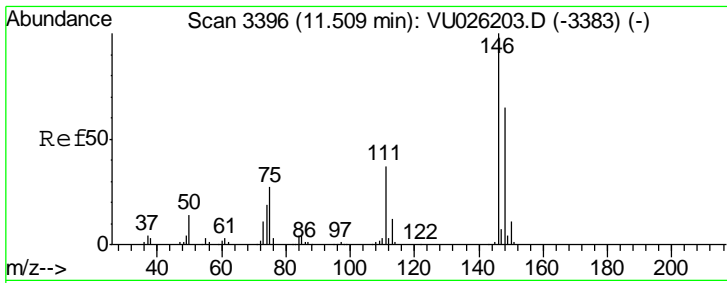
Tgt Ion	Resp	Lower	Upper
104	56622		
78	52.7	40.2	60.2
103	58.9	44.2	66.4



#68  
 1,2-Dichlorobenzene-d4  
 Concen: N.D. ug/l  
 RT: 11.86 min Scan# 3506  
 Delta R.T. -0.00 min  
 Lab File: VU026212.D  
 Acq: 20 Aug 2018 16:46

Tgt Ion	Resp	Lower	Upper
152	11941		
115	66.9	0.0	118.8
150	226.2	0.0	0.0#

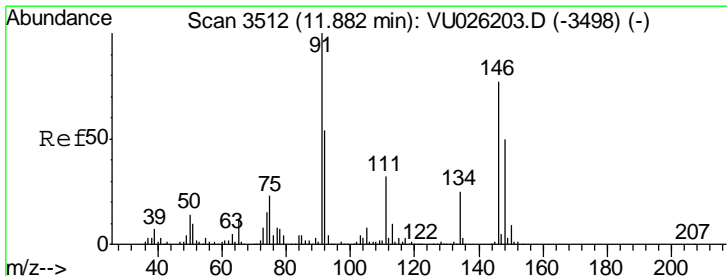
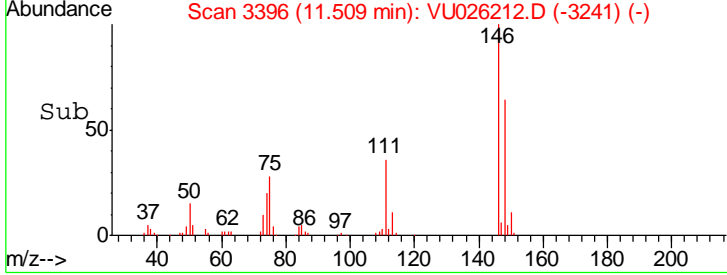
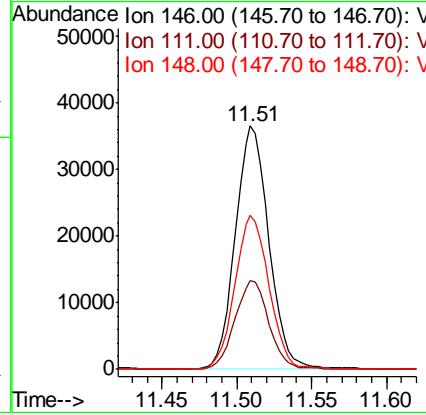
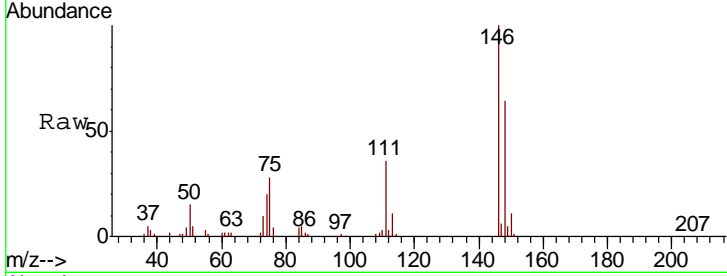




#83  
 1,4-Dichlorobenzene  
 Concen: 2.50 ug/l  
 RT: 11.51 min Scan# 3396  
 Delta R.T. -0.00 min  
 Lab File: VU026212.D  
 Acq: 20 Aug 2018 16:46

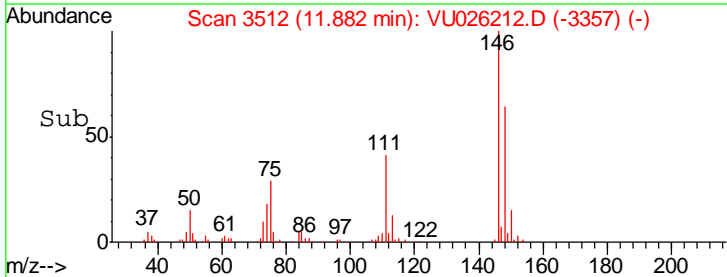
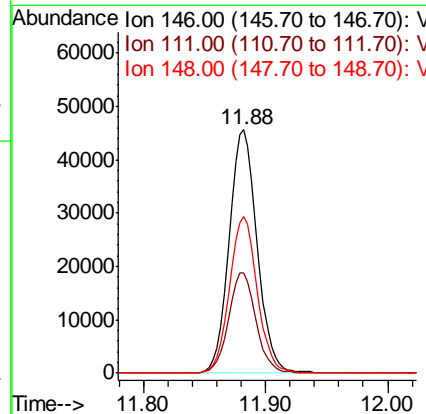
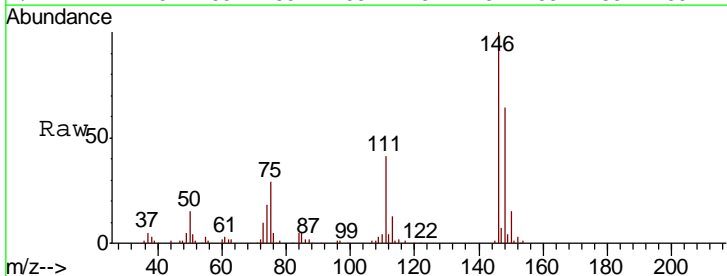
Instrument : MSVOA\_U  
 ClientSampled : PT-RVOA-WSDL

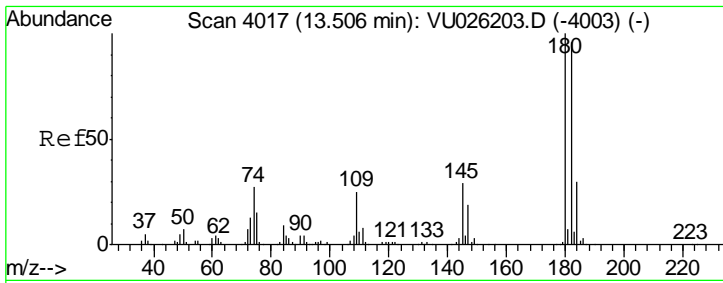
Tgt Ion	Resp	Lower	Upper
146	100		
111	36.8	30.1	45.1
148	64.3	50.6	76.0



#85  
 1,2-Dichlorobenzene  
 Concen: 3.50 ug/l  
 RT: 11.88 min Scan# 3512  
 Delta R.T. -0.00 min  
 Lab File: VU026212.D  
 Acq: 20 Aug 2018 16:46

Tgt Ion	Resp	Lower	Upper
146	100		
111	40.4	20.7	62.1
148	63.9	31.9	95.5





#87  
 1,2,4-Trichlorobenzene  
 Concen: 1.77 ug/l  
 RT: 13.51 min Scan# 4017  
 Delta R.T. -0.00 min  
 Lab File: VU026212.D  
 Acq: 20 Aug 2018 16:46

Instrument : MSVOA\_U  
 ClientSampled : PT-RVOA-WSDL

Tot Ion	Resp	Lower	Upper
180	26147		
182	98.3	77.1	115.7
145	31.0	23.3	34.9

