

Data Path : Z:\VOASRV\HPCHEM1\MSVOA U\DATA\VU082019\
 Data File : VU033851.D
 Acq On : 20 Aug 2019 14:07
 Operator : JC/SP
 Sample : K4373-15
 Misc : 25.0mL/MSVOA U/WATER
 ALS Vial : 12 Sample Multiplier: 1

Instrument :
 MSVOA_U
 ClientSampled :
 C0AD4

Integration Parameters: rteint.p
 Integrator: RTE
 Smoothing : ON
 Sampling : 1
 Start Thrs: 0.1
 Stop Thrs : 0

Filtering: 5
 Min Area: 3 % of largest Peak
 Max Peaks: 100
 Peak Location: TOP

If leading or trailing edge < 100 prefer < Baseline drop else tangent >
 Peak separation: 5

Method : Z:\VOASRV\HPCHEM1\MSVOA_U\METHOD\SOMUTR082019WMA.M
 Title : TRACE VOA SOM01.0

Signal : TIC

peak #	R.T. min	first scan	max scan	last scan	PK TY	peak height	corr. area	corr. % max.	% of total
1	5.312	1292	1313	1321	rBV2	235111	616271	1.28%	0.596%
2	5.363	1322	1329	1357	rVB	236140	490098	1.02%	0.474%
3	7.546	1995	2008	2022	rBV	277990	489307	1.01%	0.473%
4	8.302	2231	2243	2280	rBV	301387	610253	1.26%	0.590%
5	9.070	2469	2482	2506	rBV	339830	581146	1.20%	0.562%
6	11.466	3216	3227	3244	rVB	426285	691359	1.43%	0.668%
7	11.749	3301	3315	3334	rBV	4274899	6621792	13.72%	6.402%
8	11.842	3334	3344	3362	rVB2	421608	734273	1.52%	0.710%
9	11.964	3371	3382	3397	rBV	476405	752524	1.56%	0.728%
10	12.337	3486	3498	3520	rBV	868556	1399525	2.90%	1.353%
11	12.684	3597	3606	3625	rVB2	494320	950814	1.97%	0.919%
12	13.109	3717	3738	3747	rBV2	326805	554010	1.15%	0.536%
13	13.170	3747	3757	3768	rVB2	346180	549999	1.14%	0.532%
14	13.276	3779	3790	3810	rVB2	484872	818703	1.70%	0.791%
15	13.733	3915	3932	3952	rBV2	31171177	48258806	100.00%	46.655%
16	13.845	3953	3967	3977	rBV	1220366	1968532	4.08%	1.903%
17	14.806	4254	4266	4273	rBV	360492	590466	1.22%	0.571%
18	14.861	4273	4283	4295	rVV	1187759	1861429	3.86%	1.800%
19	15.048	4329	4341	4376	rVB	8652888	13523724	28.02%	13.074%
20	15.594	4490	4511	4522	rBV	432741	772213	1.60%	0.747%
21	15.900	4595	4606	4615	rBV	786000	1339062	2.77%	1.295%
22	16.044	4631	4651	4660	rBV	2112105	3429495	7.11%	3.315%
23	16.273	4703	4722	4733	rBV2	664411	1712242	3.55%	1.655%
24	16.417	4757	4767	4787	rBV	389497	626788	1.30%	0.606%
25	16.726	4842	4863	4884	rBV	6992270	10953225	22.70%	10.589%
26	16.903	4909	4918	4929	rBV2	312006	525610	1.09%	0.508%
27	17.025	4943	4956	4975	rVB	1143077	2016656	4.18%	1.950%

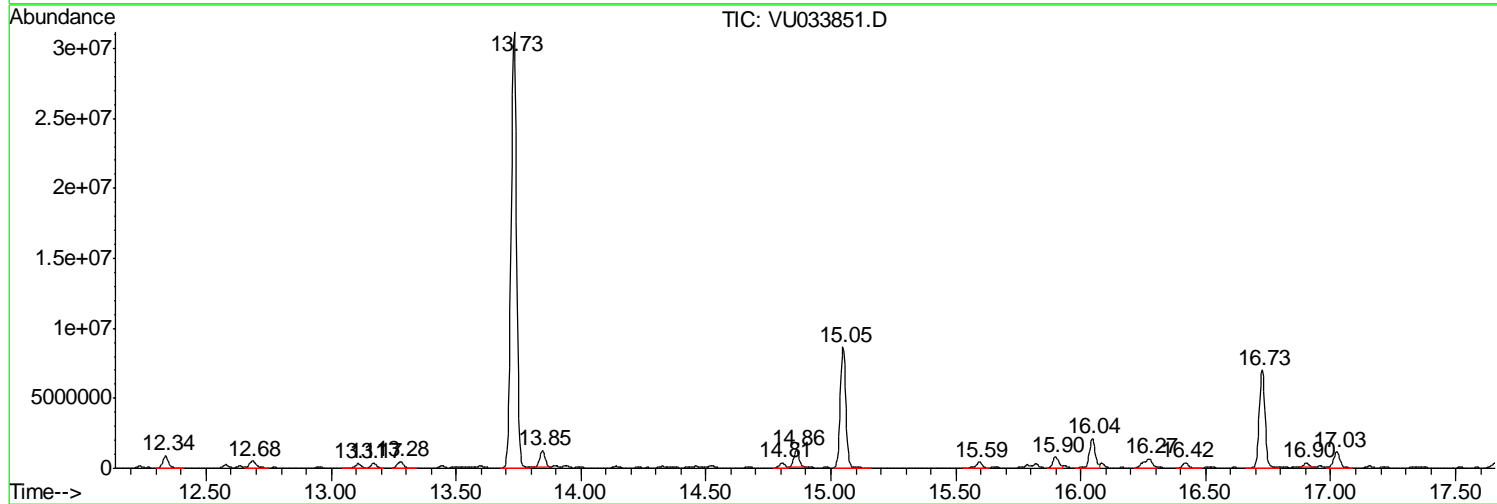
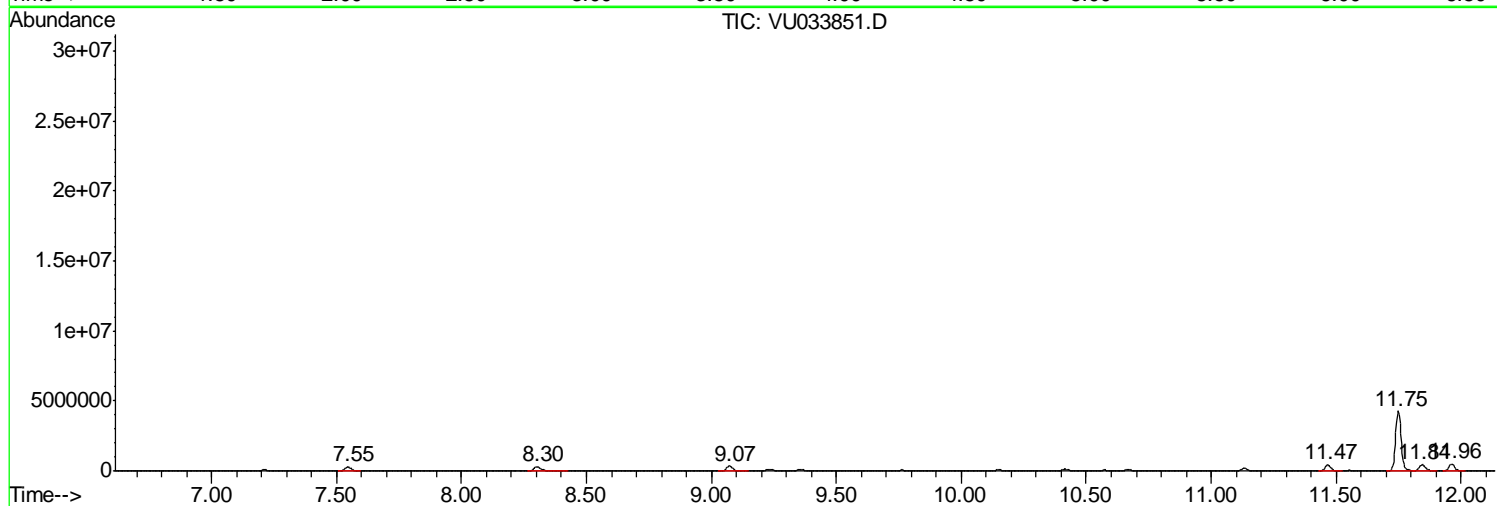
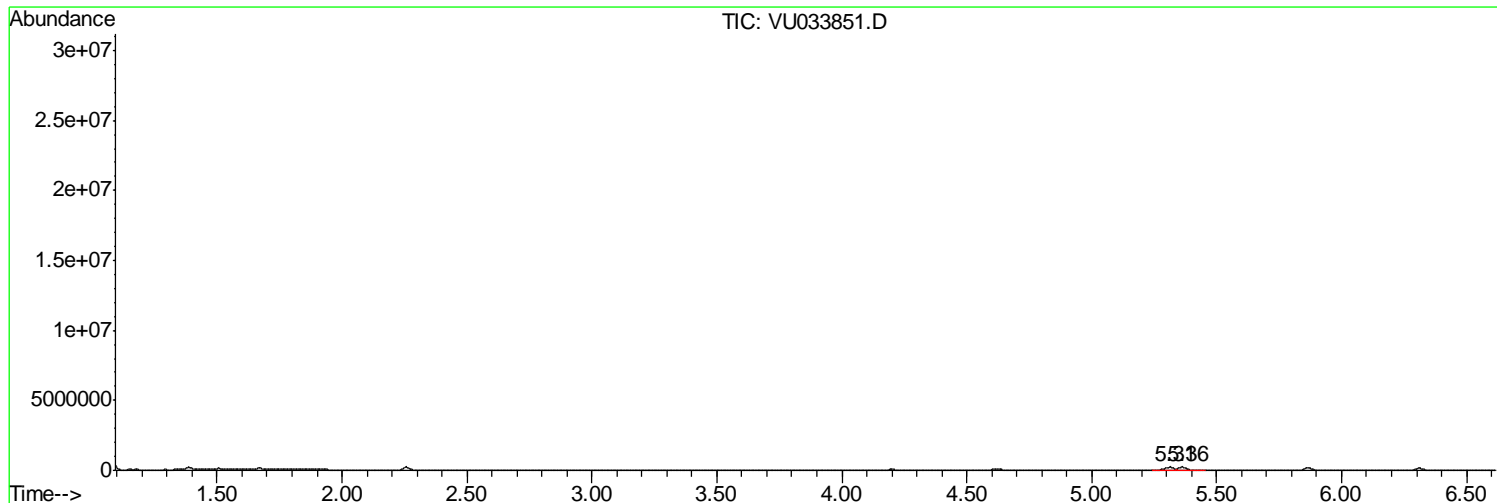
Sum of corrected areas: 103438322

Data Path : Z:\VOASRV\HPCHEM1\MSVOA U\DATA\VU082019\
 Data File : VU033851.D
 Acq On : 20 Aug 2019 14:07
 Operator : JC/SP
 Sample : K4373-15
 Misc : 25.0mL/MSVOA U/WATER
 ALS Vial : 12 Sample Multiplier: 1

Instrument :
 MSVOA_U
 ClientSampleId :
 C0AD4

Quant Method : Z:\VOASRV\HPCHEM1\MSVOA_U\METHOD\SOMUTR082019WMA.M
 Quant Title : TRACE VOA SOM01.0

TIC Library : C:\DATABASE\NIST11.L
 TIC Integration Parameters: LSCINT.P



Data Path : Z:\VOASRV\HPCHEM1\MSVOA U\DATA\VU082019\
 Data File : VU033851.D
 Acq On : 20 Aug 2019 14:07
 Operator : JC/SP
 Sample : K4373-15
 Misc : 25.0mL/MSVOA U/WATER
 ALS Vial : 12 Sample Multiplier: 1

Instrument :
 MSVOA_U
 ClientSampleID :
 C0AD4

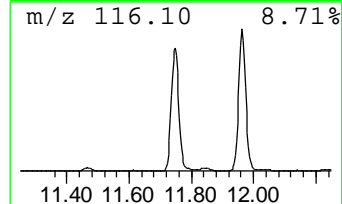
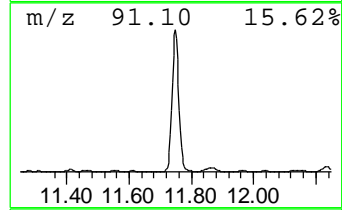
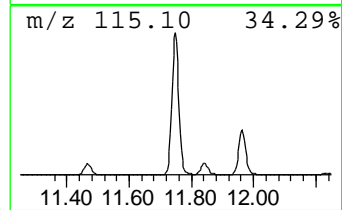
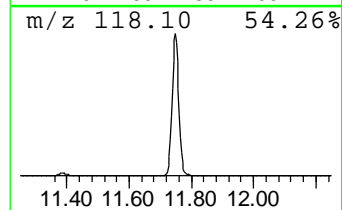
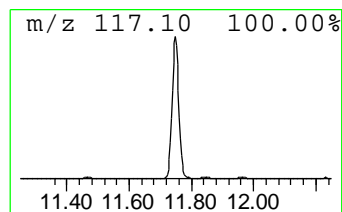
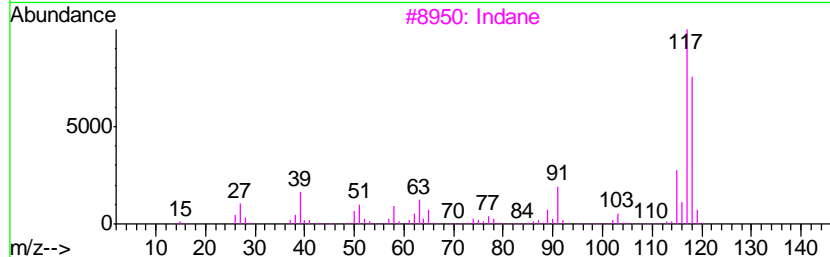
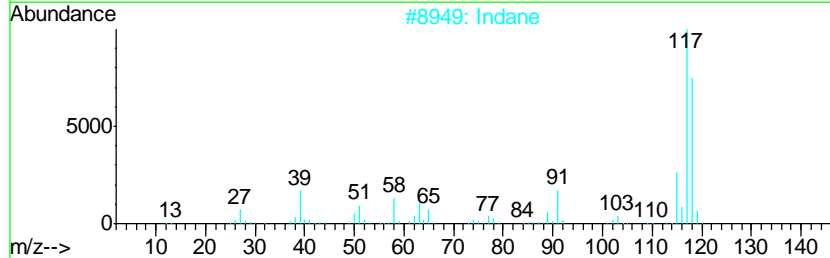
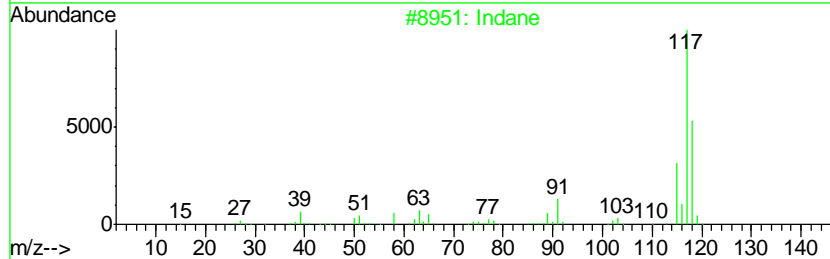
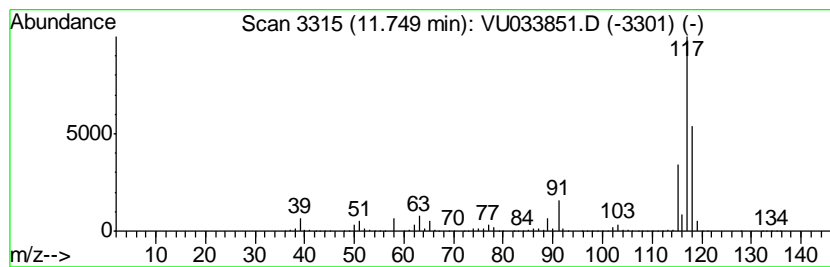
Quant Method : Z:\VOASRV\HPCHEM1\MSVOA_U\METHOD\SOMUTR082019WMA.M
 Quant Title : TRACE VOA SOM01.0

TIC Library : C:\DATABASE\NIST11.L
 TIC Integration Parameters: LSCINT.P

 Peak Number 1 Indane Concentration Rank 4

R.T.	EstConc	Area	Relative to ISTD	R.T.
11.75	47.89 ug/L	6621790	1,4-Dichlorobenzene-d4	11.47

Hit#	of	Tentative ID	MW	MolForm	CAS#	Qual
1	5	Indane	118	C9H10	000496-11-7	95
2		Indane	118	C9H10	000496-11-7	91
3		Indane	118	C9H10	000496-11-7	90
4		Benzene, 1-ethenyl-4-methyl-	118	C9H10	000622-97-9	74
5		Deltacyclene	118	C9H10	007785-10-6	72



Data Path : Z:\VOASRV\HPCHEM1\MSVOA U\DATA\VU082019\
 Data File : VU033851.D
 Acq On : 20 Aug 2019 14:07
 Operator : JC/SP
 Sample : K4373-15
 Misc : 25.0mL/MSVOA U/WATER
 ALS Vial : 12 Sample Multiplier: 1

Instrument :
 MSVOA_U
 ClientSampleID :
 C0AD4

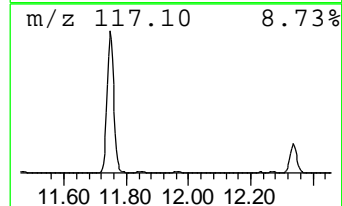
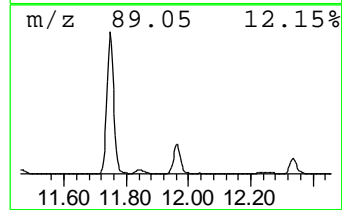
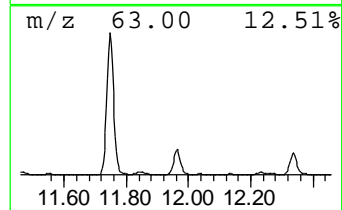
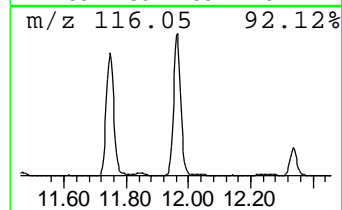
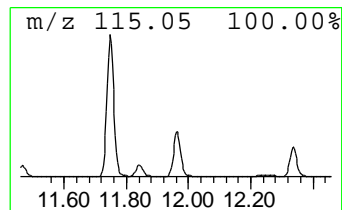
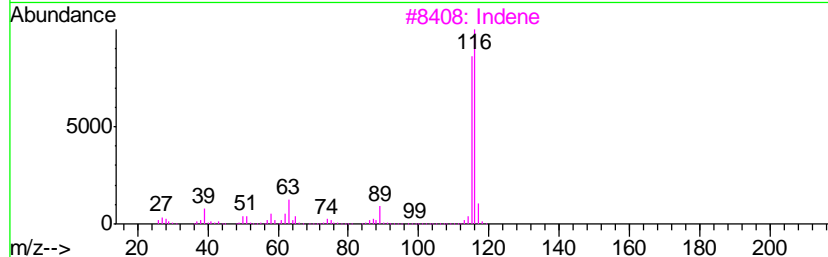
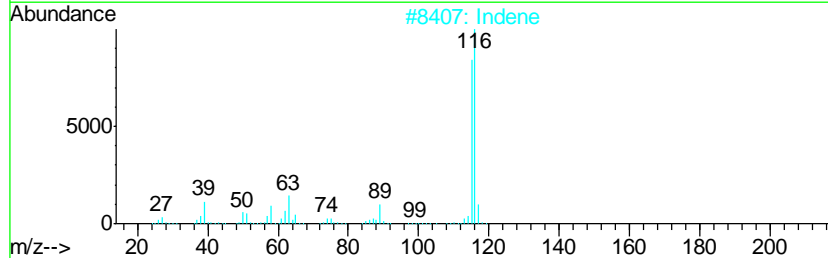
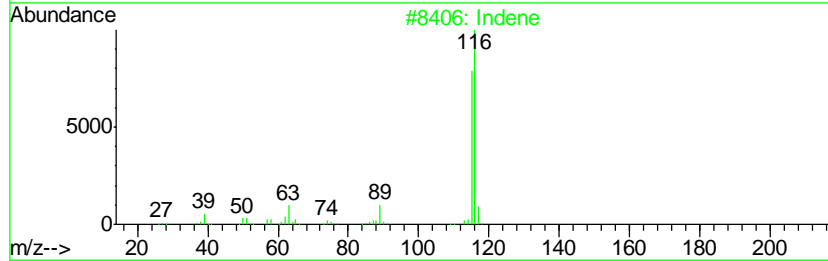
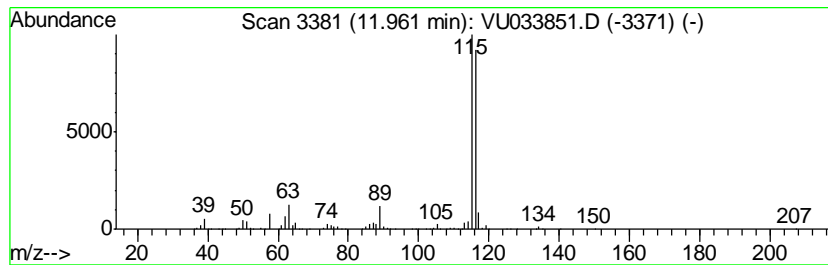
Quant Method : Z:\VOASRV\HPCHEM1\MSVOA_U\METHOD\SOMUTR082019WMA.M
 Quant Title : TRACE VOA SOM01.0

TIC Library : C:\DATABASE\NIST11.L
 TIC Integration Parameters: LSCINT.P

 Peak Number 2 Indene Concentration Rank 15

R.T.	EstConc	Area	Relative to ISTD	R.T.
11.96	5.44 ug/L	752524	1,4-Dichlorobenzene-d4	11.47

Hit#	of	Tentative ID	MW	MolForm	CAS#	Qual
1	5	Indene	116	C9H8	000095-13-6	97
2		Indene	116	C9H8	000095-13-6	95
3		Indene	116	C9H8	000095-13-6	95
4		Benzene, 1-propynyl-	116	C9H8	000673-32-5	94
5		3-Methylphenylacetylene	116	C9H8	000766-82-5	91



Data Path : Z:\VOASRV\HPCHEM1\MSVOA U\DATA\VU082019\
 Data File : VU033851.D
 Acq On : 20 Aug 2019 14:07
 Operator : JC/SP
 Sample : K4373-15
 Misc : 25.0mL/MSVOA U/WATER
 ALS Vial : 12 Sample Multiplier: 1

Instrument :
 MSVOA_U
 ClientSampleID :
 C0AD4

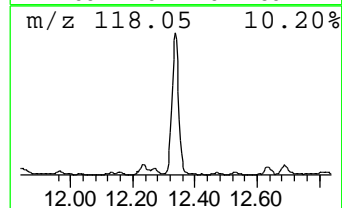
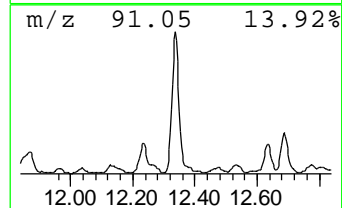
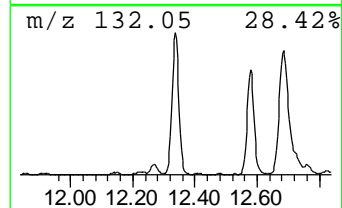
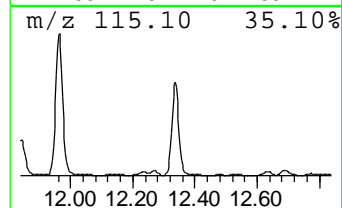
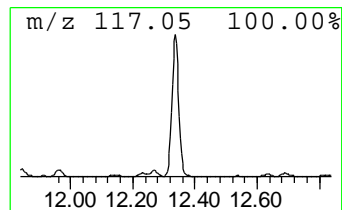
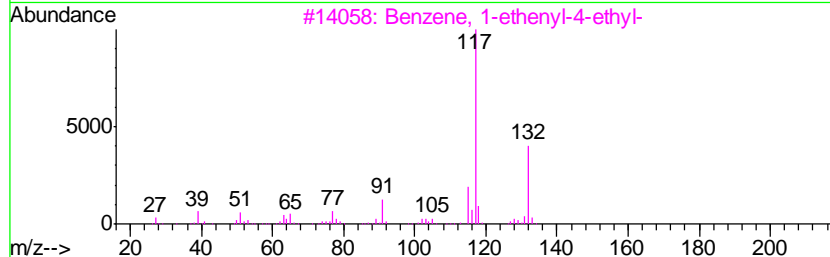
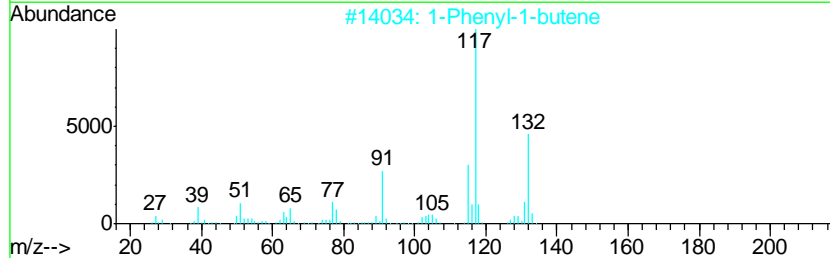
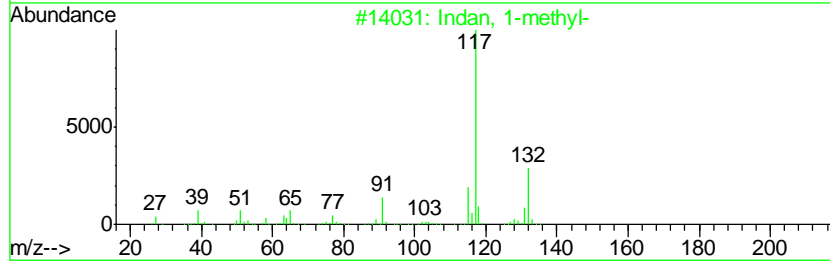
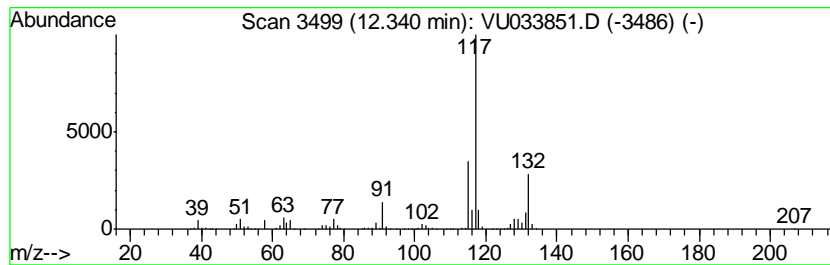
Quant Method : Z:\VOASRV\HPCHEM1\MSVOA_U\METHOD\SOMUTR082019WMA.M
 Quant Title : TRACE VOA SOM01.0

TIC Library : C:\DATABASE\NIST11.L
 TIC Integration Parameters: LSCINT.P

 Peak Number 3 Indan, 1-methyl- Concentration Rank 10

R.T.	EstConc	Area	Relative to ISTD	R.T.
12.34	10.12 ug/L	1399530	1,4-Dichlorobenzene-d4	11.47

Hit#	of	Tentative ID	MW	MolForm	CAS#	Qual
1	5	Indan, 1-methyl-	132	C10H12	000767-58-8	87
2		1-Phenyl-1-butene	132	C10H12	000824-90-8	87
3		Benzene, 1-ethenyl-4-ethyl-	132	C10H12	003454-07-7	87
4		Benzene, 1-ethenyl-3-ethyl-	132	C10H12	007525-62-4	86
5		(E)-1-Phenyl-1-butene	132	C10H12	001005-64-7	83



Data Path : Z:\VOASRV\HPCHEM1\MSVOA U\DATA\VU082019\
 Data File : VU033851.D
 Acq On : 20 Aug 2019 14:07
 Operator : JC/SP
 Sample : K4373-15
 Misc : 25.0mL/MSVOA U/WATER
 ALS Vial : 12 Sample Multiplier: 1

Instrument :
 MSVOA_U
 ClientSampleID :
 C0AD4

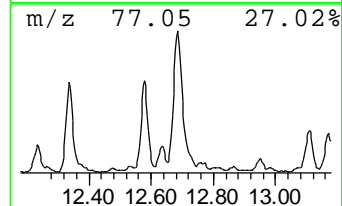
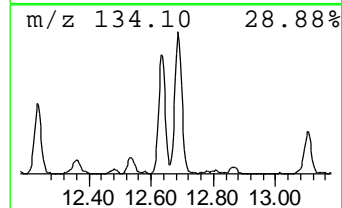
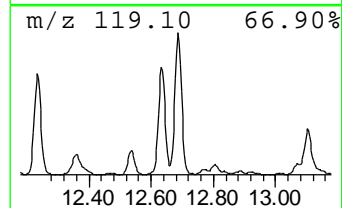
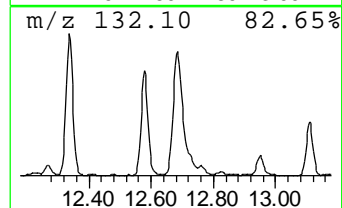
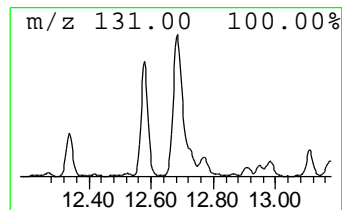
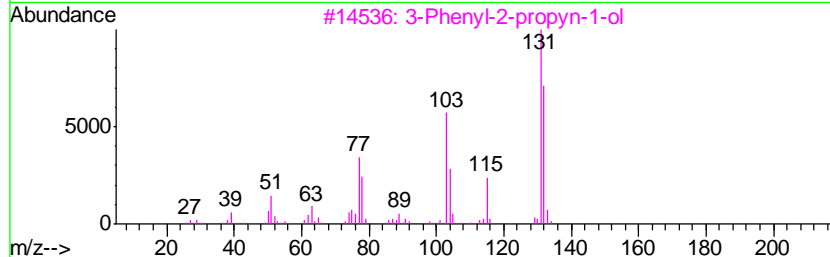
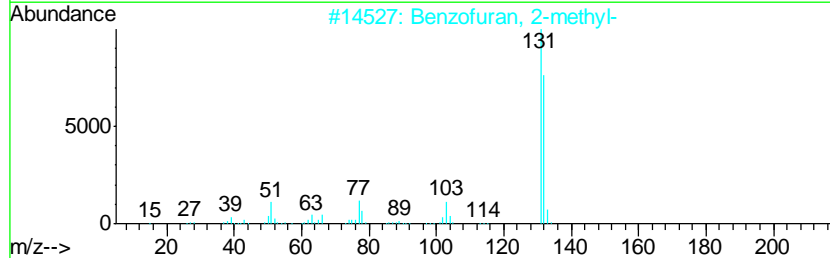
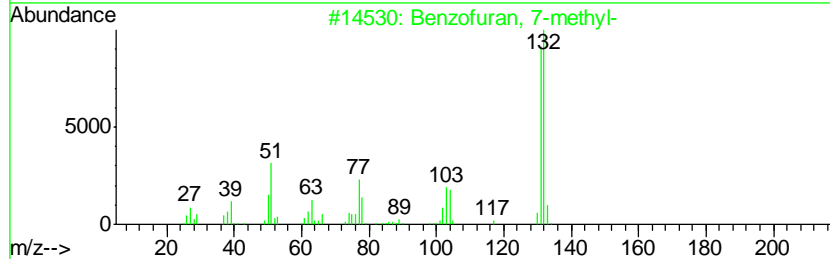
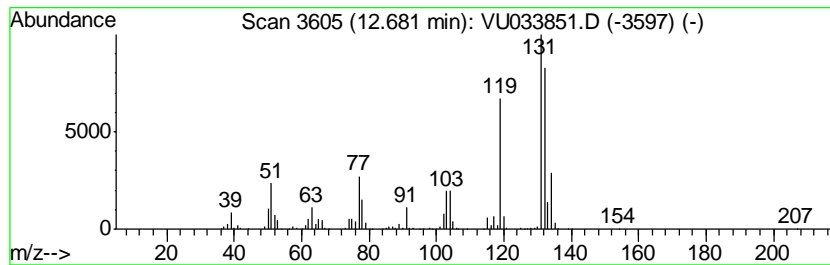
Quant Method : Z:\VOASRV\HPCHEM1\MSVOA_U\METHOD\SOMUTR082019WMA.M
 Quant Title : TRACE VOA SOM01.0

TIC Library : C:\DATABASE\NIST11.L
 TIC Integration Parameters: LSCINT.P

 Peak Number 4 Benzofuran, 7-methyl- Concentration Rank 12

R.T.	EstConc	Area	Relative to ISTD	R.T.
12.68	6.88 ug/L	950814	1,4-Dichlorobenzene-d4	11.47

Hit#	of	Tentative ID	MW	MolForm	CAS#	Qual
1	5	Benzofuran, 7-methyl-	132	C9H8O	017059-52-8	86
2		Benzofuran, 2-methyl-	132	C9H8O	004265-25-2	83
3		3-Phenyl-2-propyn-1-ol	132	C9H8O	001504-58-1	64
4		Benzofuran, 2-methyl-	132	C9H8O	004265-25-2	64
5		2-Propenal, 3-phenyl-	132	C9H8O	000104-55-2	64



Data Path : Z:\VOASRV\HPCHEM1\MSVOA U\DATA\VU082019\
 Data File : VU033851.D
 Acq On : 20 Aug 2019 14:07
 Operator : JC/SP
 Sample : K4373-15
 Misc : 25.0mL/MSVOA U/WATER
 ALS Vial : 12 Sample Multiplier: 1

Instrument :
 MSVOA_U
 ClientSampleID :
 C0AD4

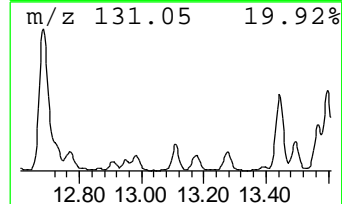
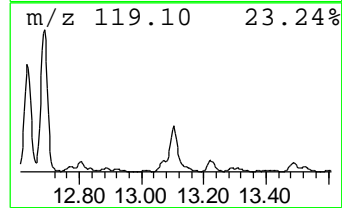
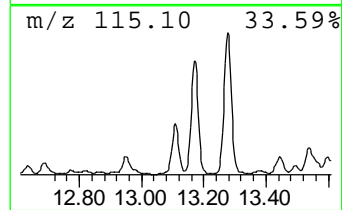
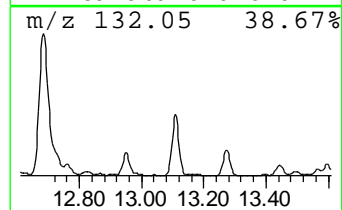
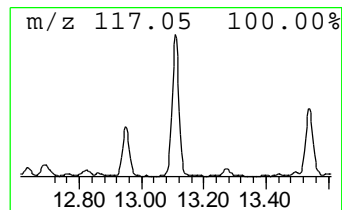
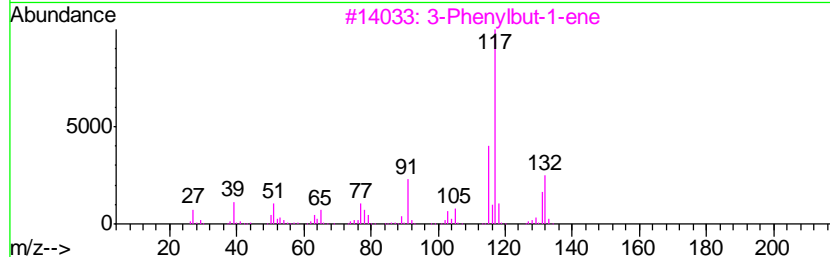
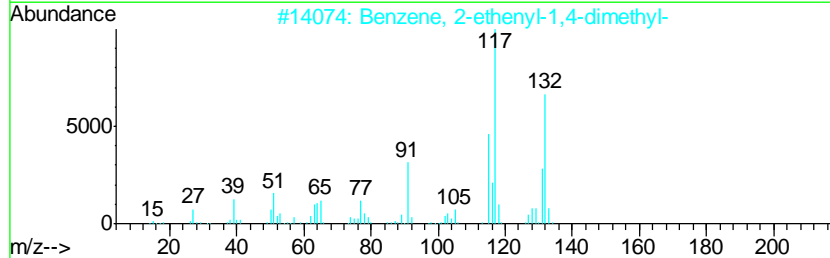
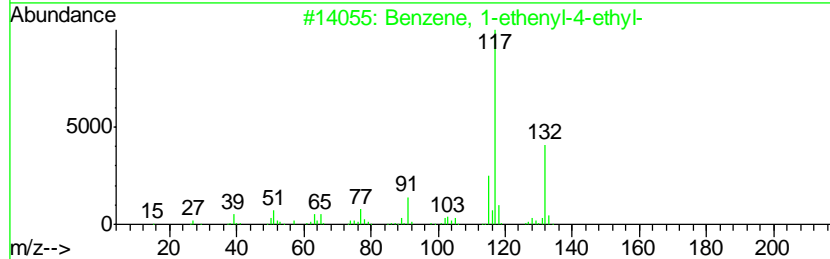
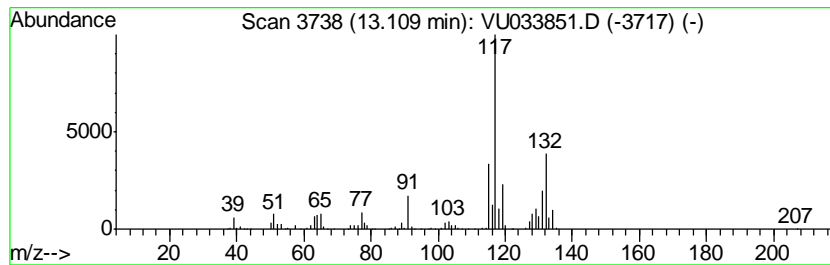
Quant Method : Z:\VOASRV\HPCHEM1\MSVOA_U\METHOD\SOMUTR082019WMA.M
 Quant Title : TRACE VOA SOM01.0

TIC Library : C:\DATABASE\NIST11.L
 TIC Integration Parameters: LSCINT.P

 Peak Number 5 Benzene, 1-ethenyl-4-ethyl- Concentration Rank 18

R.T.	EstConc	Area	Relative to ISTD	R.T.
13.11	4.01 ug/L	554010	1,4-Dichlorobenzene-d4	11.47

Hit#	of	Tentative ID	MW	MolForm	CAS#	Qual
1	5	Benzene, 1-ethenyl-4-ethyl-	132	C10H12	003454-07-7	94
2		Benzene, 2-ethenyl-1,4-dimethyl-	132	C10H12	002039-89-6	93
3		3-Phenylbut-1-ene	132	C10H12	000934-10-1	87
4		1H-Indene, 2,3-dihydro-4-methyl-	132	C10H12	000824-22-6	87
5		1H-Indene, 2,3-dihydro-5-methyl-	132	C10H12	000874-35-1	81



Data Path : Z:\VOASRV\HPCHEM1\MSVOA U\DATA\VU082019\
 Data File : VU033851.D
 Acq On : 20 Aug 2019 14:07
 Operator : JC/SP
 Sample : K4373-15
 Misc : 25.0mL/MSVOA U/WATER
 ALS Vial : 12 Sample Multiplier: 1

Instrument :
 MSVOA_U
 ClientSampleID :
 C0AD4

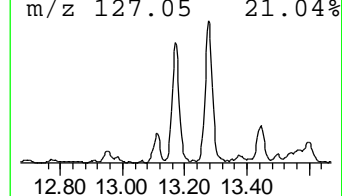
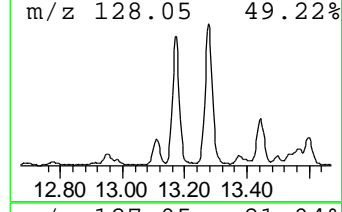
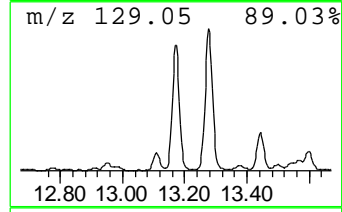
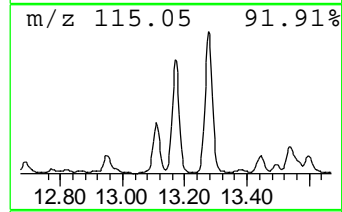
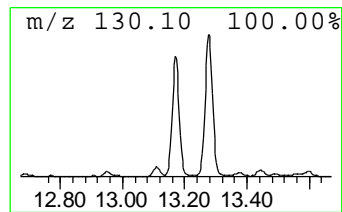
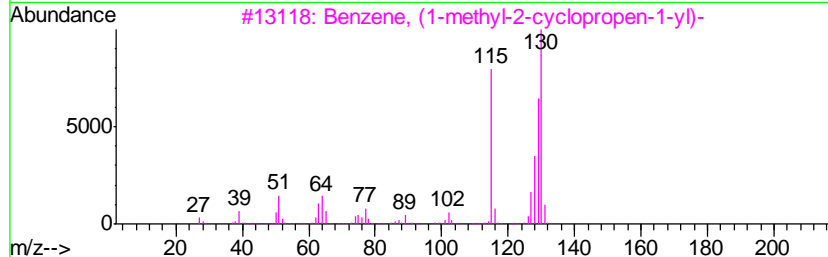
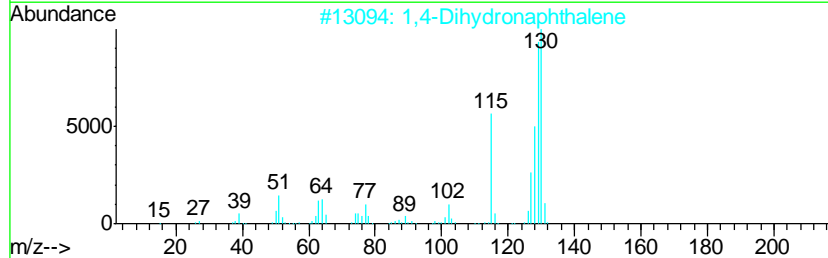
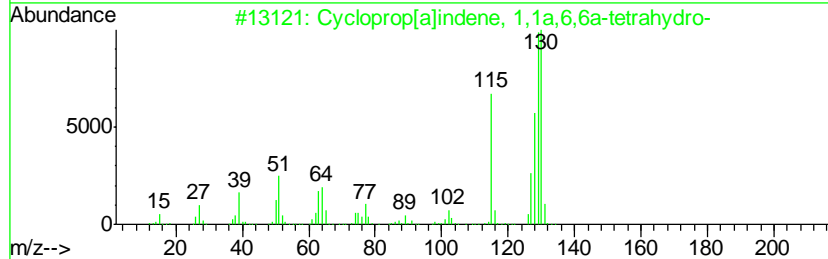
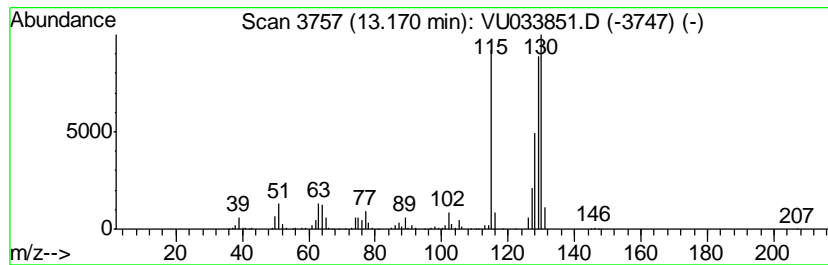
Quant Method : Z:\VOASRV\HPCHEM1\MSVOA_U\METHOD\SOMUTR082019WMA.M
 Quant Title : TRACE VOA SOM01.0

TIC Library : C:\DATABASE\NIST11.L
 TIC Integration Parameters: LSCINT.P

 Peak Number 6 Cycloprop[a]indene, 1,1a,6,... Concentration Rank 19

R.T.	EstConc	Area	Relative to ISTD	R.T.
13.17	3.98 ug/L	549999	1,4-Dichlorobenzene-d4	11.47

Hit#	of	Tentative ID	MW	MolForm	CAS#	Qual
1	5	Cycloprop[a]indene, 1,1a,6,6a-te...	130	C10H10	015677-15-3	97
2		1,4-Dihydronaphthalene	130	C10H10	000612-17-9	96
3		Benzene, (1-methyl-2-cyclopropen...	130	C10H10	065051-83-4	96
4		Cycloprop[a]indene, 1,1a,6,6a-te...	130	C10H10	015677-15-3	96
5		2-Methylindene	130	C10H10	002177-47-1	96



Data Path : Z:\VOASRV\HPCHEM1\MSVOA U\DATA\VU082019\
 Data File : VU033851.D
 Acq On : 20 Aug 2019 14:07
 Operator : JC/SP
 Sample : K4373-15
 Misc : 25.0mL/MSVOA U/WATER
 ALS Vial : 12 Sample Multiplier: 1

Instrument :
 MSVOA_U
 ClientSampleID :
 C0AD4

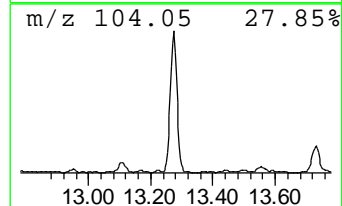
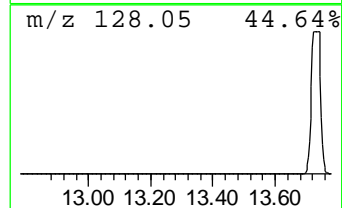
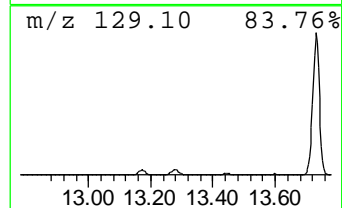
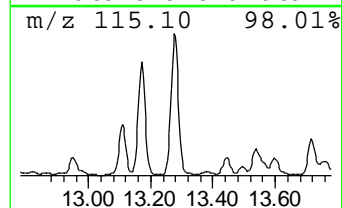
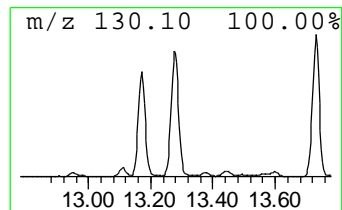
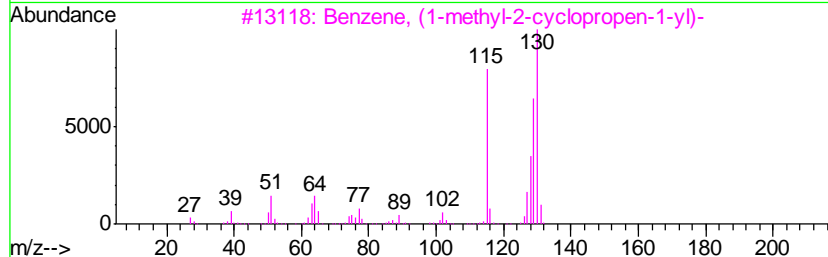
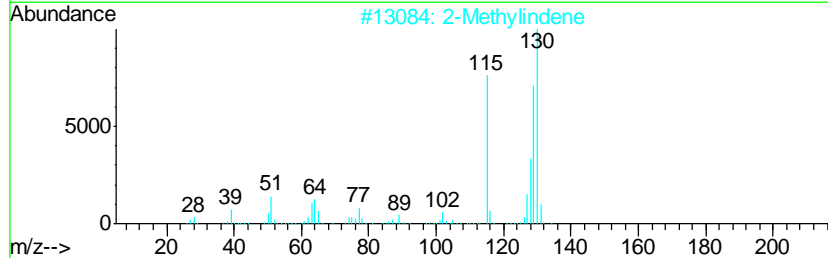
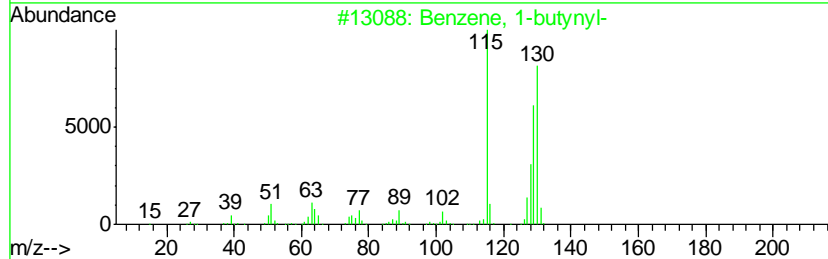
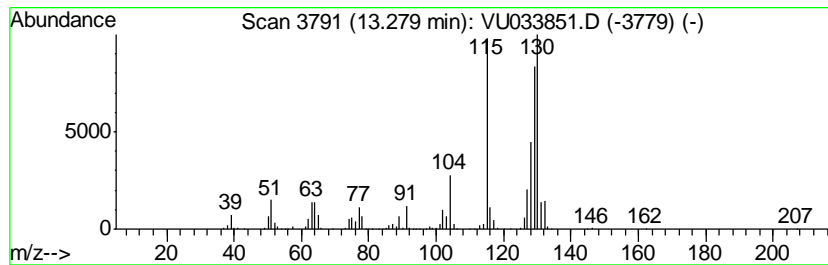
Quant Method : Z:\VOASRV\HPCHEM1\MSVOA_U\METHOD\SOMUTR082019WMA.M
 Quant Title : TRACE VOA SOM01.0

TIC Library : C:\DATABASE\NIST11.L
 TIC Integration Parameters: LSCINT.P

 Peak Number 7 Benzene, 1-butynyl- Concentration Rank 13

R.T.	EstConc	Area	Relative to ISTD	R.T.
13.28	5.92 ug/L	818703	1,4-Dichlorobenzene-d4	11.47

Hit#	of	Tentative ID	MW	MolForm	CAS#	Qual
1	5	Benzene, 1-butynyl-	130	C10H10	000622-76-4	97
2		2-Methylindene	130	C10H10	002177-47-1	96
3		Benzene, (1-methyl-2-cyclopropen...	130	C10H10	065051-83-4	96
4		1H-Indene, 1-methyl-	130	C10H10	000767-59-9	96
5		Benzene, 1-methyl-1,2-propadienyl-	130	C10H10	022433-39-2	93



Data Path : Z:\VOASRV\HPCHEM1\MSVOA U\DATA\VU082019\
 Data File : VU033851.D
 Acq On : 20 Aug 2019 14:07
 Operator : JC/SP
 Sample : K4373-15
 Misc : 25.0mL/MSVOA U/WATER
 ALS Vial : 12 Sample Multiplier: 1

Instrument :
 MSVOA_U
 ClientSampleID :
 C0AD4

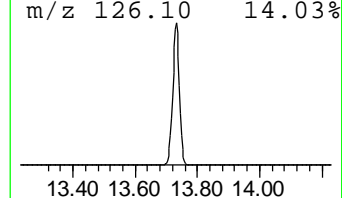
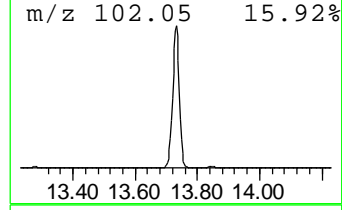
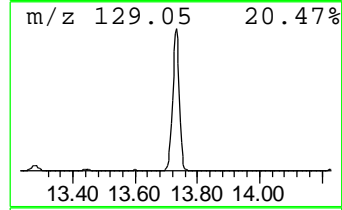
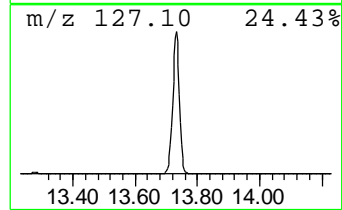
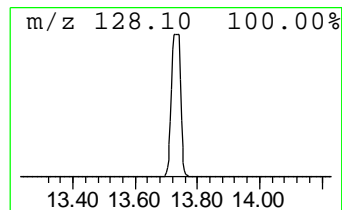
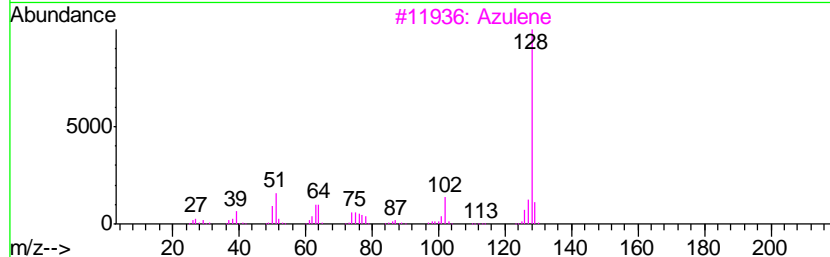
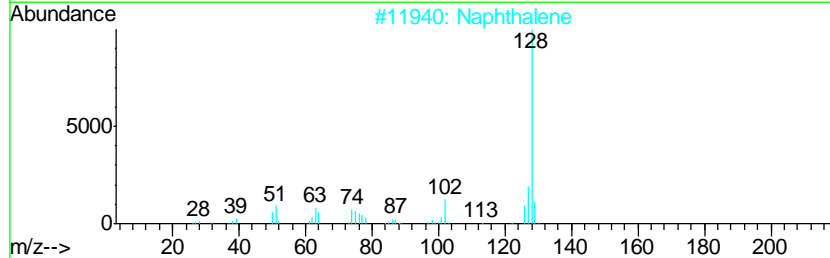
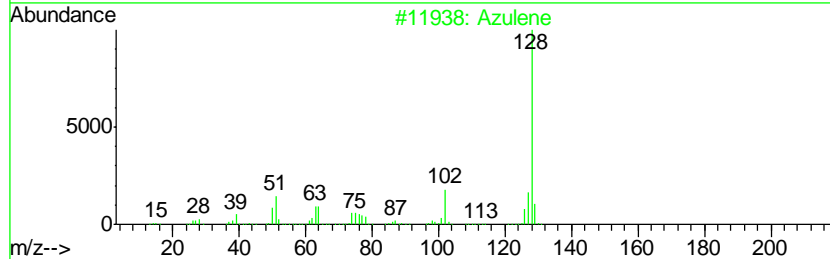
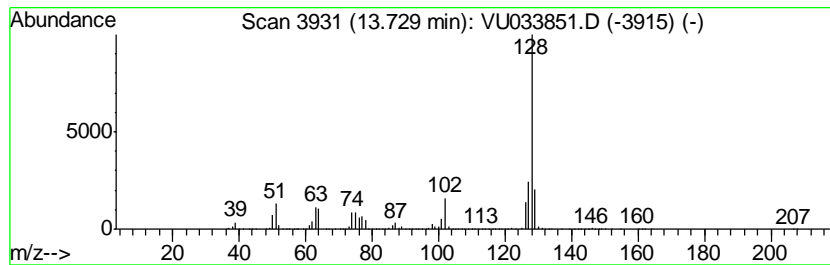
Quant Method : Z:\VOASRV\HPCHEM1\MSVOA_U\METHOD\SOMUTR082019WMA.M
 Quant Title : TRACE VOA SOM01.0

TIC Library : C:\DATABASE\NIST11.L
 TIC Integration Parameters: LSCINT.P

 Peak Number 8 Azulene Concentration Rank 1

R.T.	EstConc	Area	Relative to ISTD	R.T.
13.73	349.01 ug/L	48258800	1,4-Dichlorobenzene-d4	11.47

Hit#	of	Tentative ID	MW	MolForm	CAS#	Qual
1	5	Azulene	128	C10H8	000275-51-4	93
2		Naphthalene	128	C10H8	000091-20-3	93
3		Azulene	128	C10H8	000275-51-4	87
4		Naphthalene	128	C10H8	000091-20-3	87
5		Azulene	128	C10H8	000275-51-4	81



Data Path : Z:\VOASRV\HPCHEM1\MSVOA U\DATA\VU082019\
 Data File : VU033851.D
 Acq On : 20 Aug 2019 14:07
 Operator : JC/SP
 Sample : K4373-15
 Misc : 25.0mL/MSVOA U/WATER
 ALS Vial : 12 Sample Multiplier: 1

Instrument :
 MSVOA_U
 ClientSampleID :
 C0AD4

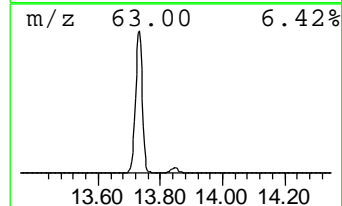
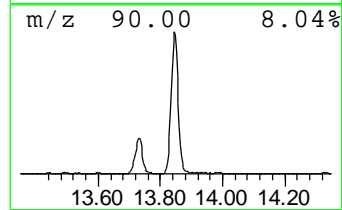
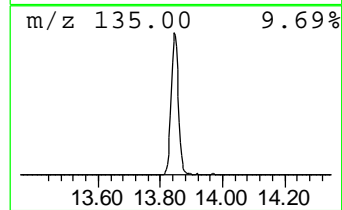
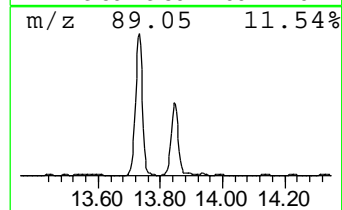
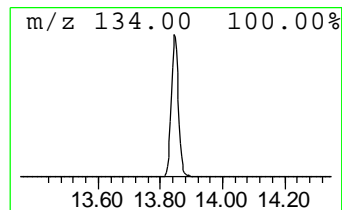
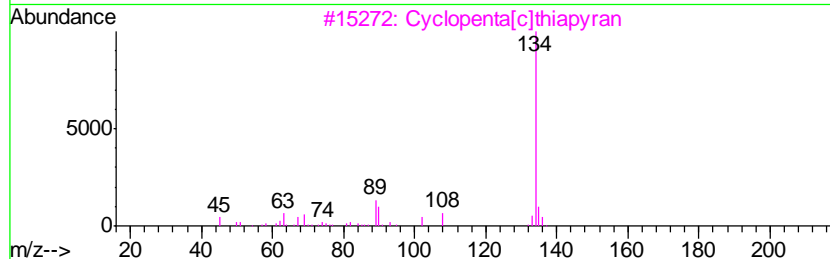
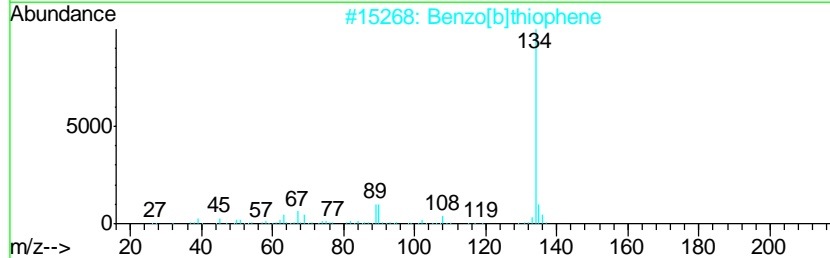
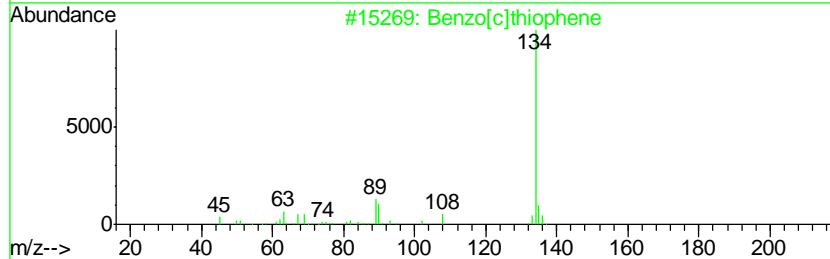
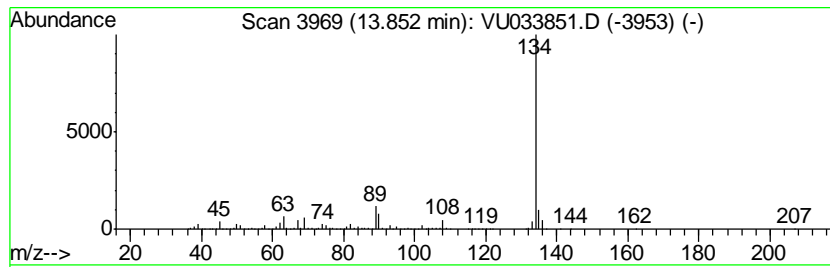
Quant Method : Z:\VOASRV\HPCHEM1\MSVOA_U\METHOD\SOMUTR082019WMA.M
 Quant Title : TRACE VOA SOM01.0

TIC Library : C:\DATABASE\NIST11.L
 TIC Integration Parameters: LSCINT.P

 Peak Number 9 Benzo[c]thiophene Concentration Rank 7

R.T.	EstConc	Area	Relative to ISTD	R.T.
13.85	14.24 ug/L	1968530	1,4-Dichlorobenzene-d4	11.47

Hit#	of	Tentative ID	MW	MolForm	CAS#	Qual
1	5	Benzo[c]thiophene	134	C8H6S	000270-82-6	97
2		Benzo[b]thiophene	134	C8H6S	000095-15-8	94
3		Cyclopenta[c]thiapyran	134	C8H6S	000270-63-3	94
4		Benzo[b]thiophene	134	C8H6S	000095-15-8	91
5		Benzo[b]thiophene	134	C8H6S	000095-15-8	91



Data Path : Z:\VOASRV\HPCHEM1\MSVOA U\DATA\VU082019\
 Data File : VU033851.D
 Acq On : 20 Aug 2019 14:07
 Operator : JC/SP
 Sample : K4373-15
 Misc : 25.0mL/MSVOA U/WATER
 ALS Vial : 12 Sample Multiplier: 1

Instrument :
 MSVOA_U
 ClientSampled :
 C0AD4

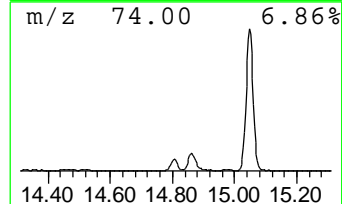
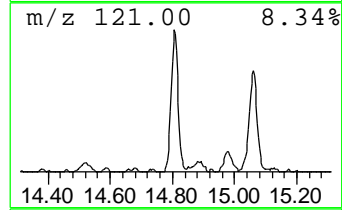
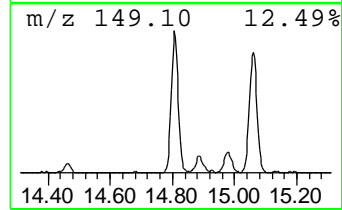
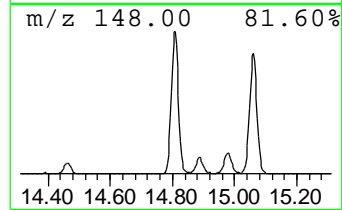
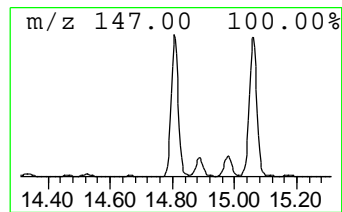
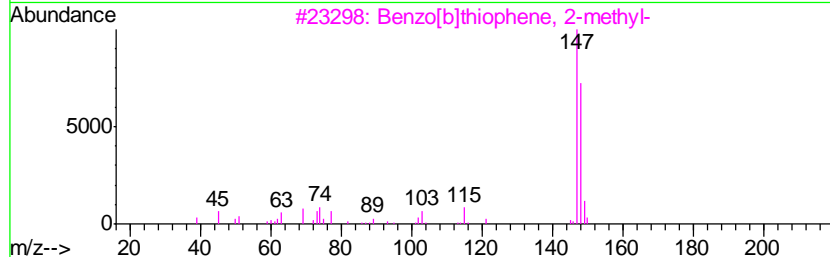
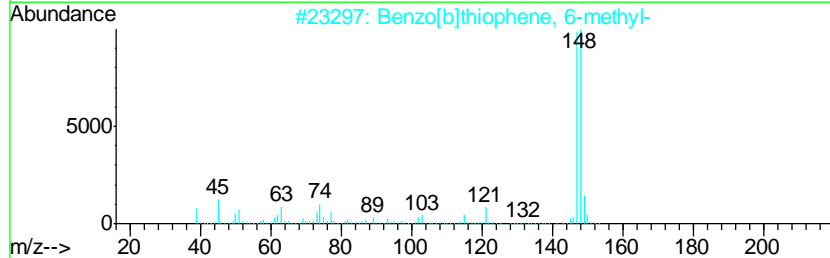
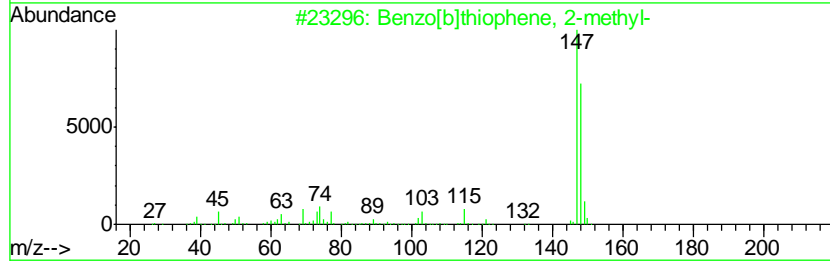
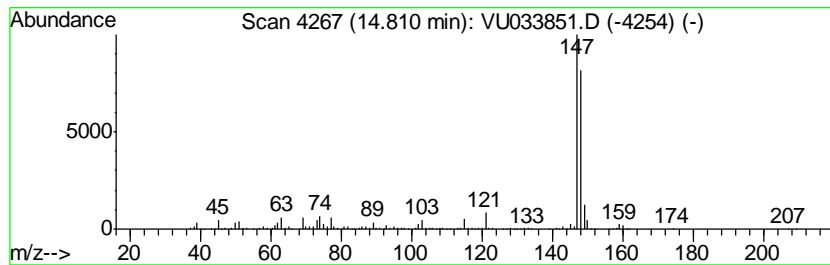
Quant Method : Z:\VOASRV\HPCHEM1\MSVOA_U\METHOD\SOMUTR082019WMA.M
 Quant Title : TRACE VOA SOM01.0

TIC Library : C:\DATABASE\NIST11.L
 TIC Integration Parameters: LSCINT.P

 Peak Number 10 Benzo[b]thiophene, 2-methyl- Concentration Rank 17

R.T.	EstConc	Area	Relative to ISTD	R.T.
14.81	4.27 ug/L	590466	1,4-Dichlorobenzene-d4	11.47

Hit#	of	Tentative ID	MW	MolForm	CAS#	Qual
1	5	Benzo[b]thiophene, 2-methyl-	148	C9H8S	001195-14-8	91
2		Benzo[b]thiophene, 6-methyl-	148	C9H8S	016587-47-6	91
3		Benzo[b]thiophene, 2-methyl-	148	C9H8S	001195-14-8	91
4		3-Methylbenzothiophene	148	C9H8S	001455-18-1	91
5		3-Methylbenzothiophene	148	C9H8S	001455-18-1	90



Data Path : Z:\VOASRV\HPCHEM1\MSVOA U\DATA\VU082019\
 Data File : VU033851.D
 Acq On : 20 Aug 2019 14:07
 Operator : JC/SP
 Sample : K4373-15
 Misc : 25.0mL/MSVOA U/WATER
 ALS Vial : 12 Sample Multiplier: 1

Instrument :
 MSVOA_U
 ClientSampleID :
 C0AD4

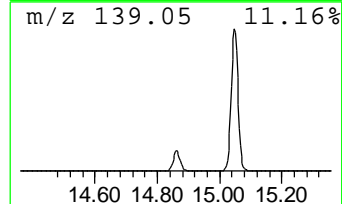
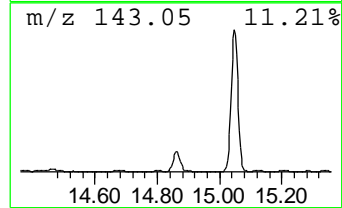
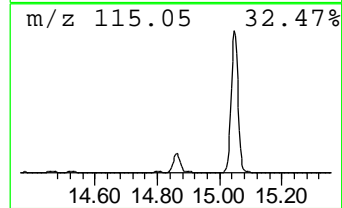
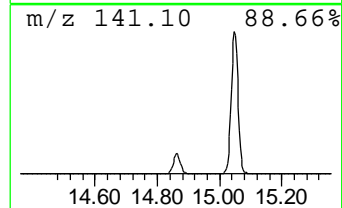
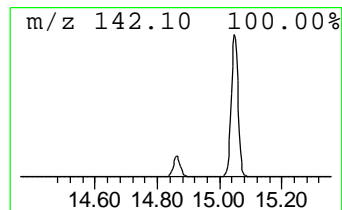
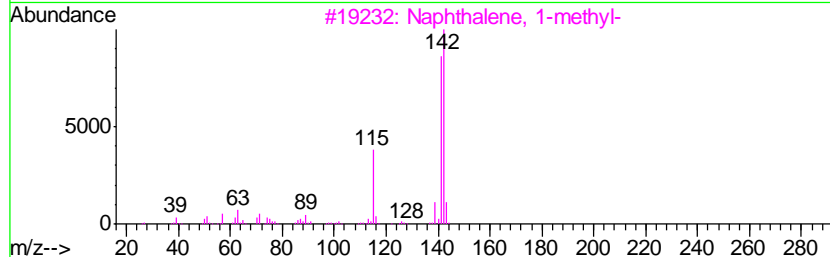
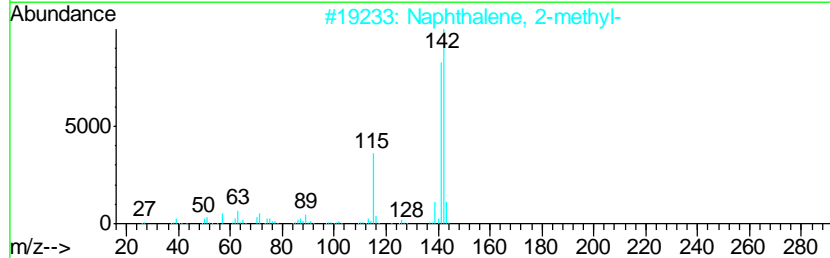
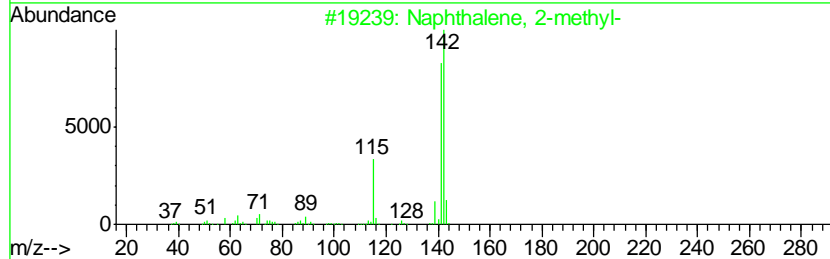
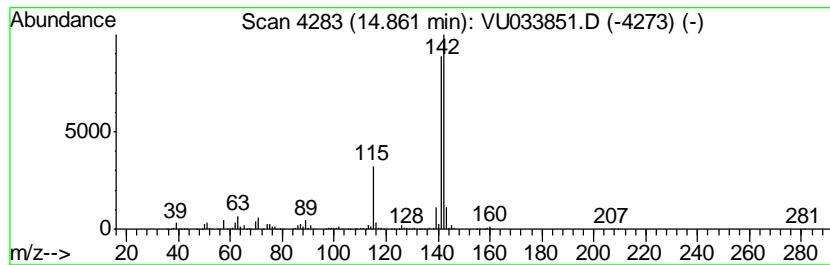
Quant Method : Z:\VOASRV\HPCHEM1\MSVOA_U\METHOD\SOMUTR082019WMA.M
 Quant Title : TRACE VOA SOM01.0

TIC Library : C:\DATABASE\NIST11.L
 TIC Integration Parameters: LSCINT.P

 Peak Number 11 Naphthalene, 1-methyl- Concentration Rank 8

R.T.	EstConc	Area	Relative to ISTD	R.T.
14.86	13.46 ug/L	1861430	1,4-Dichlorobenzene-d4	11.47

Hit#	of	Tentative ID	MW	MolForm	CAS#	Qual
1	5	Naphthalene, 2-methyl-	142	C11H10	000091-57-6	96
2		Naphthalene, 2-methyl-	142	C11H10	000091-57-6	96
3		Naphthalene, 1-methyl-	142	C11H10	000090-12-0	96
4		Naphthalene, 2-methyl-	142	C11H10	000091-57-6	94
5		Naphthalene, 1-methyl-	142	C11H10	000090-12-0	94



Data Path : Z:\VOASRV\HPCHEM1\MSVOA U\DATA\VU082019\
 Data File : VU033851.D
 Acq On : 20 Aug 2019 14:07
 Operator : JC/SP
 Sample : K4373-15
 Misc : 25.0mL/MSVOA U/WATER
 ALS Vial : 12 Sample Multiplier: 1

Instrument :
 MSVOA_U
 ClientSampleID :
 C0AD4

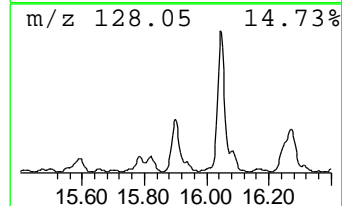
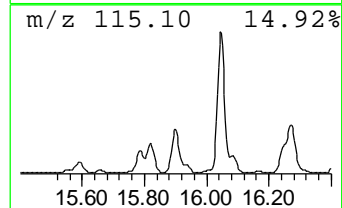
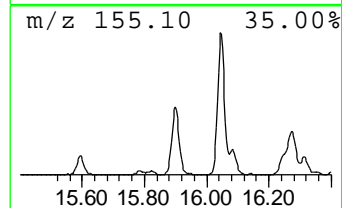
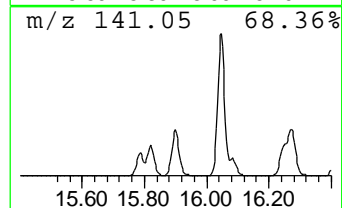
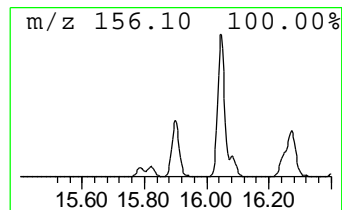
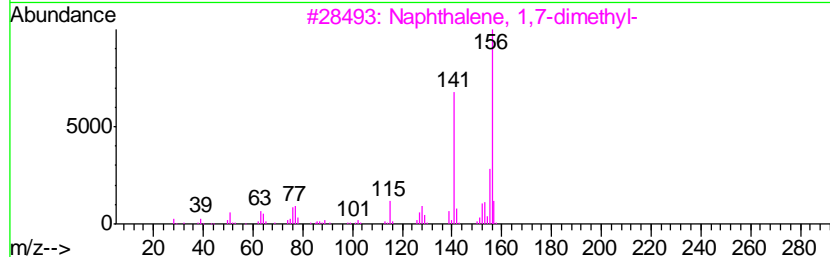
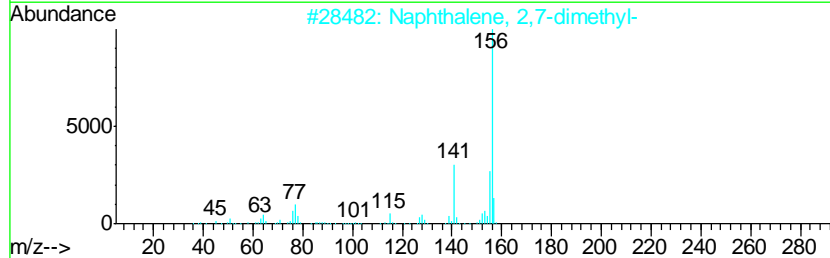
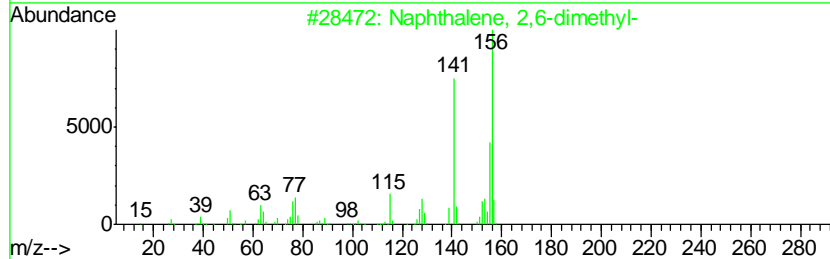
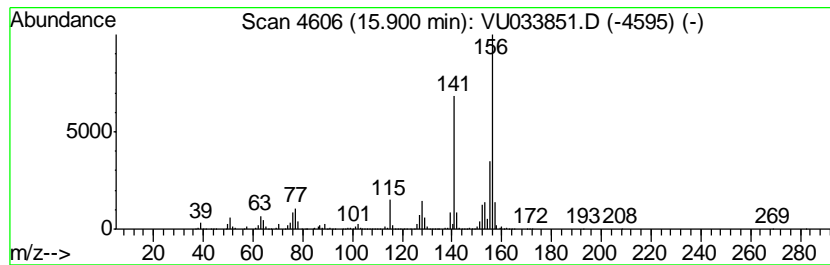
Quant Method : Z:\VOASRV\HPCHEM1\MSVOA_U\METHOD\SOMUTR082019WMA.M
 Quant Title : TRACE VOA SOM01.0

TIC Library : C:\DATABASE\NIST11.L
 TIC Integration Parameters: LSCINT.P

 Peak Number 14 Naphthalene, 2,6-dimethyl- Concentration Rank 11

R.T.	EstConc	Area	Relative to ISTD	R.T.
15.90	9.68 ug/L	1339060	1,4-Dichlorobenzene-d4	11.47

Hit#	of	Tentative ID	MW	MolForm	CAS#	Qual
1	5	Naphthalene, 2,6-dimethyl-	156	C12H12	000581-42-0	98
2		Naphthalene, 2,7-dimethyl-	156	C12H12	000582-16-1	97
3		Naphthalene, 1,7-dimethyl-	156	C12H12	000575-37-1	97
4		Naphthalene, 1,4-dimethyl-	156	C12H12	000571-58-4	97
5		Naphthalene, 2,3-dimethyl-	156	C12H12	000581-40-8	97



Data Path : Z:\VOASRV\HPCHEM1\MSVOA U\DATA\VU082019\
 Data File : VU033851.D
 Acq On : 20 Aug 2019 14:07
 Operator : JC/SP
 Sample : K4373-15
 Misc : 25.0mL/MSVOA U/WATER
 ALS Vial : 12 Sample Multiplier: 1

Instrument :
 MSVOA_U
 ClientSampleID :
 C0AD4

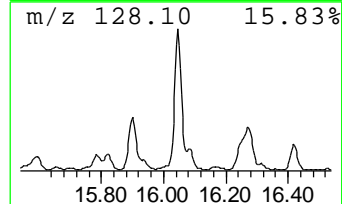
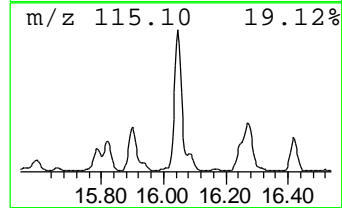
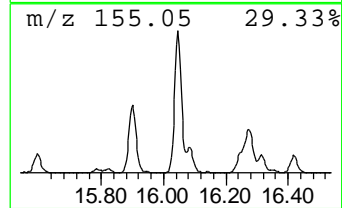
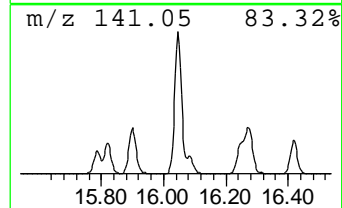
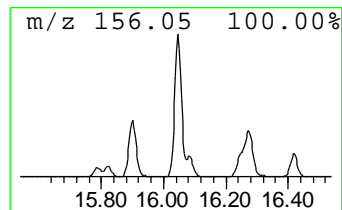
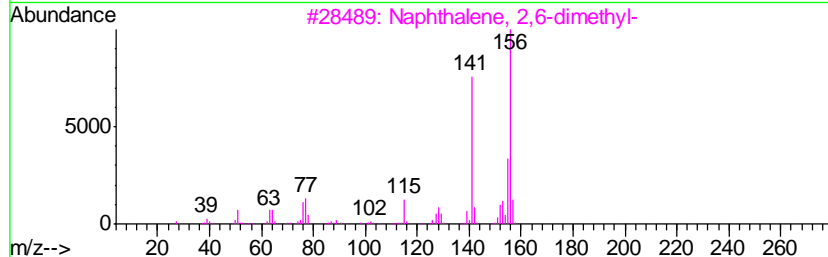
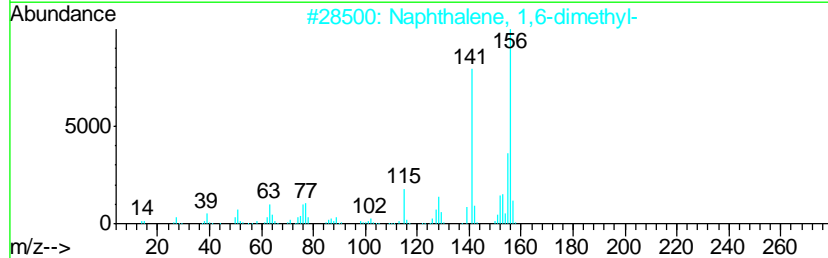
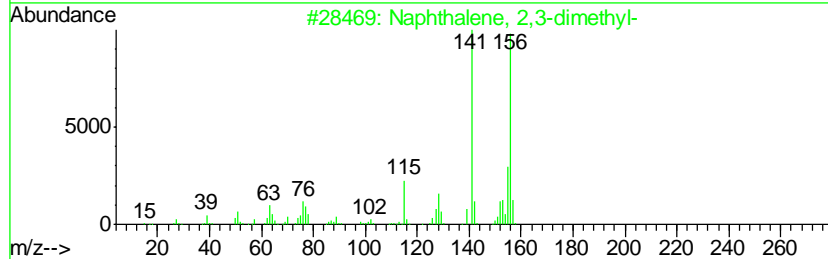
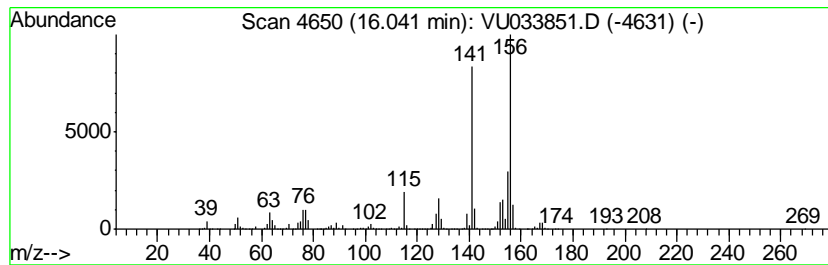
Quant Method : Z:\VOASRV\HPCHEM1\MSVOA_U\METHOD\SOMUTR082019WMA.M
 Quant Title : TRACE VOA SOM01.0

TIC Library : C:\DATABASE\NIST11.L
 TIC Integration Parameters: LSCINT.P

 Peak Number 15 Naphthalene, 2,3-dimethyl- Concentration Rank 5

R.T.	EstConc	Area	Relative to ISTD	R.T.
16.04	24.80 ug/L	3429500	1,4-Dichlorobenzene-d4	11.47

Hit#	of	Tentative ID	MW	MolForm	CAS#	Qual
1	5	Naphthalene, 2,3-dimethyl-	156	C12H12	000581-40-8	98
2		Naphthalene, 1,6-dimethyl-	156	C12H12	000575-43-9	98
3		Naphthalene, 2,6-dimethyl-	156	C12H12	000581-42-0	97
4		Naphthalene, 1,4-dimethyl-	156	C12H12	000571-58-4	97
5		Naphthalene, 1,6-dimethyl-	156	C12H12	000575-43-9	97



Data Path : Z:\VOASRV\HPCHEM1\MSVOA U\DATA\VU082019\
 Data File : VU033851.D
 Acq On : 20 Aug 2019 14:07
 Operator : JC/SP
 Sample : K4373-15
 Misc : 25.0mL/MSVOA U/WATER
 ALS Vial : 12 Sample Multiplier: 1

Instrument :
 MSVOA_U
 ClientSampleID :
 C0AD4

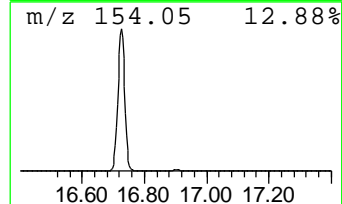
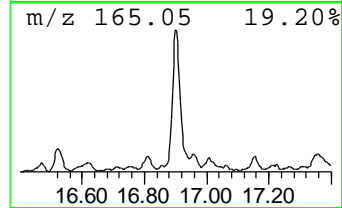
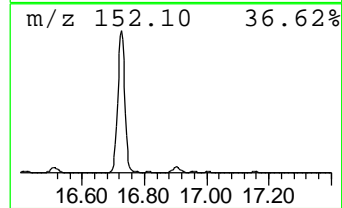
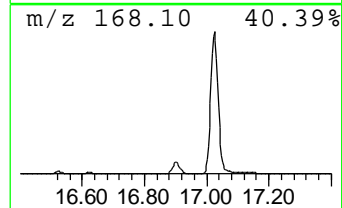
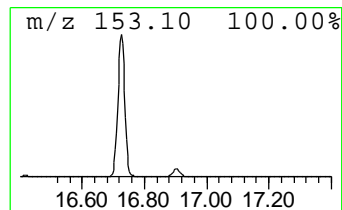
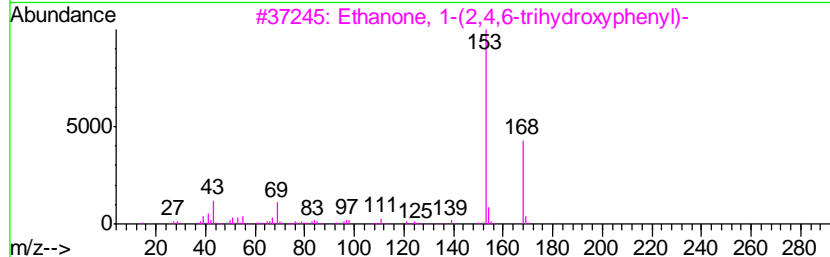
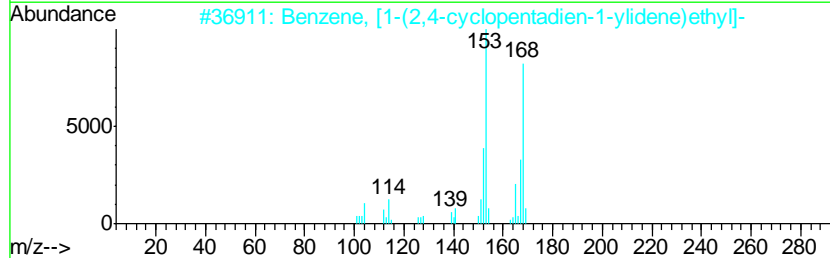
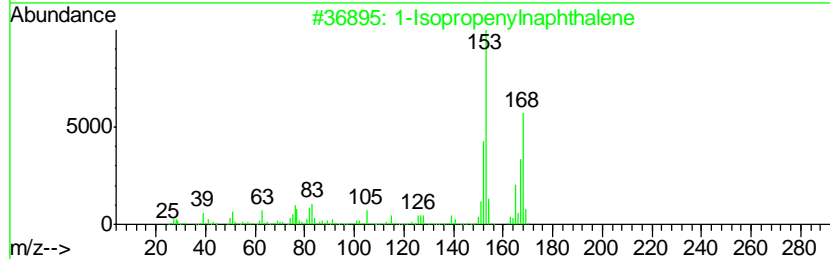
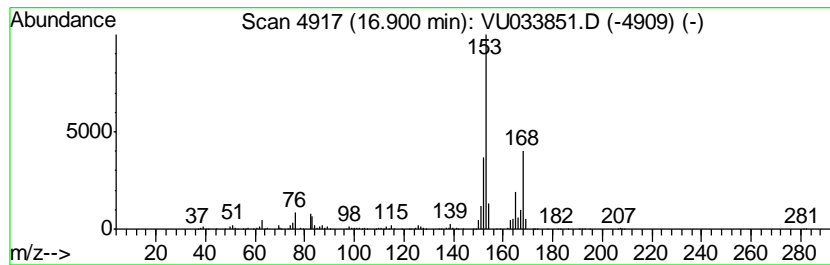
Quant Method : Z:\VOASRV\HPCHEM1\MSVOA_U\METHOD\SOMUTR082019WMA.M
 Quant Title : TRACE VOA SOM01.0

TIC Library : C:\DATABASE\NIST11.L
 TIC Integration Parameters: LSCINT.P

 Peak Number 19 1-Isopropenylnaphthalene Concentration Rank 20

R.T.	EstConc	Area	Relative to ISTD	R.T.
16.90	3.80 ug/L	525610	1,4-Dichlorobenzene-d4	11.47

Hit#	of	Tentative ID	MW	MolForm	CAS#	Qual
1	5	1-Isopropenylnaphthalene	168	C13H12	001855-47-6	90
2		Benzene, [1-(2,4-cyclopentadien-...	168	C13H12	002320-32-3	72
3		Ethanone, 1-(2,4,6-trihydroxyphe...	168	C8H8O4	000480-66-0	53
4		Ethanone, 1-(2,4,6-trihydroxyphe...	168	C8H8O4	000480-66-0	53
5		Acetophenone, 3'-fluoro-4'-methoxy-	168	C9H9FO2	000455-91-4	53



Data Path : Z:\VOASRV\HPCHEM1\MSVOA_U\DATA\VU082019\
 Data File : VU033851.D
 Acq On : 20 Aug 2019 14:07
 Operator : JC/SP
 Sample : K4373-15
 Misc : 25.0mL/MSVOA_U/WATER
 ALS Vial : 12 Sample Multiplier: 1

Instrument :
 MSVOA_U
 ClientSampleId :
 C0AD4

Quant Method : Z:\VOASRV\HPCHEM1\MSVOA_U\METHOD\SOMUTR082019WMA.M
 Quant Title : TRACE VOA SOM01.0

TIC Library : C:\DATABASE\NIST11.L
 TIC Integration Parameters: LSCINT.P

TIC Top Hit name	RT	EstConc	Units	Response	--Internal Standard--			
					#	RT	Resp	Conc
Indane	11.75	47.9	ug/L	6621790	3	11.47	691359	5.0
Indene	11.96	5.4	ug/L	752524	3	11.47	691359	5.0
Indan, 1-methyl-	12.34	10.1	ug/L	1399530	3	11.47	691359	5.0
Benzofuran, 7-met...	12.68	6.9	ug/L	950814	3	11.47	691359	5.0
Benzene, 1-etheny...	13.11	4.0	ug/L	554010	3	11.47	691359	5.0
Cycloprop[a]inden...	13.17	4.0	ug/L	549999	3	11.47	691359	5.0
Benzene, 1-butynyl-	13.28	5.9	ug/L	818703	3	11.47	691359	5.0
Azulene	13.73	349.0	ug/L	48258800	3	11.47	691359	5.0
Benzo[c]thiophene	13.85	14.2	ug/L	1968530	3	11.47	691359	5.0
Benzo[b]thiophene...	14.81	4.3	ug/L	590466	3	11.47	691359	5.0
Naphthalene, 1-me...	14.86	13.5	ug/L	1861430	3	11.47	691359	5.0
Naphthalene, 2,6-...	15.90	9.7	ug/L	1339060	3	11.47	691359	5.0
Naphthalene, 2,3-...	16.04	24.8	ug/L	3429500	3	11.47	691359	5.0
1-Isopropenylnaph...	16.90	3.8	ug/L	525610	3	11.47	691359	5.0