

Data Path : Z:\VOASRV\HPCHEM1\MSVOA U\DATA\VU082120\
 Data File : VU039942.D
 Acq On : 21 Aug 2020 20:51
 Operator : SY/MD
 Sample : L3776-04 100X
 Misc : 25.0mL/MSVOA U/WATER
 ALS Vial : 26 Sample Multiplier: 1

Instrument :
 MSVOA_U
 ClientSampleId :
 F4Y03

Quant Time: Aug 22 03:11:59 2020
 Quant Method : Z:\VOASRV\HPCHEM1\MSVOA_U\METHOD\SOMUTR081920WMA.M
 Quant Title : TRACE VOA SOM01.0
 QLast Update : Sat Aug 22 00:45:05 2020
 Response via : Initial Calibration

Internal Standards	R.T.	QIon	Response	Conc	Units	Dev(Min)
1) 1,4-Difluorobenzene	6.26	114	79374	5.00	ug/L	0.00
28) Chlorobenzene-d5	9.42	117	81198	5.00	ug/L	0.00
60) 1,4-Dichlorobenzene-d4	11.81	152	34997	5.00	ug/L	0.00

System Monitoring Compounds

4) Vinyl Chloride-d3	1.60	65	27938	4.03	ug/L	0.00
Spiked Amount	5.000	Range	40 - 130	Recovery	=	80.60%
7) Chloroethane-d5	1.92	69	26780	4.67	ug/L	0.00
Spiked Amount	5.000	Range	65 - 130	Recovery	=	93.40%
11) 1,1-Dichloroethene-d2	2.58	63	38464	2.87	ug/L	0.00
Spiked Amount	5.000	Range	60 - 125	Recovery	=	57.40%#
20) 2-Butanone-d5	4.67	46	113757	51.34	ug/L	0.00
Spiked Amount	50.000	Range	40 - 130	Recovery	=	102.68%
24) Chloroform-d	5.08	84	58623	4.68	ug/L	0.00
Spiked Amount	5.000	Range	70 - 125	Recovery	=	93.60%
26) 1,2-Dichloroethane-d4	5.72	65	34897	4.71	ug/L	0.00
Spiked Amount	5.000	Range	70 - 130	Recovery	=	94.20%
32) Benzene-d6	5.75	84	110128	4.56	ug/L	0.00
Spiked Amount	5.000	Range	70 - 125	Recovery	=	91.20%
36) 1,2-Dichloropropane-d6	6.70	67	34615	4.34	ug/L	0.00
Spiked Amount	5.000	Range	60 - 140	Recovery	=	86.80%
41) Toluene-d8	7.91	98	82582	3.90	ug/L	0.00
Spiked Amount	5.000	Range	70 - 130	Recovery	=	78.00%
43) trans-1,3-Dichloropropene-	8.19	79	13120	3.92	ug/L	0.00
Spiked Amount	5.000	Range	55 - 130	Recovery	=	78.40%
46) 2-Hexanone-d5	8.64	63	78526	46.24	ug/L	0.00
Spiked Amount	50.000	Range	45 - 130	Recovery	=	92.48%
57) 1,1,2,2-Tetrachloroethane-	10.75	84	33466	4.72	ug/L	0.00
Spiked Amount	5.000	Range	65 - 120	Recovery	=	94.40%
64) 1,2-Dichlorobenzene-d4	12.19	152	36781	5.33	ug/L	0.00
Spiked Amount	5.000	Range	80 - 120	Recovery	=	106.60%

Target Compounds

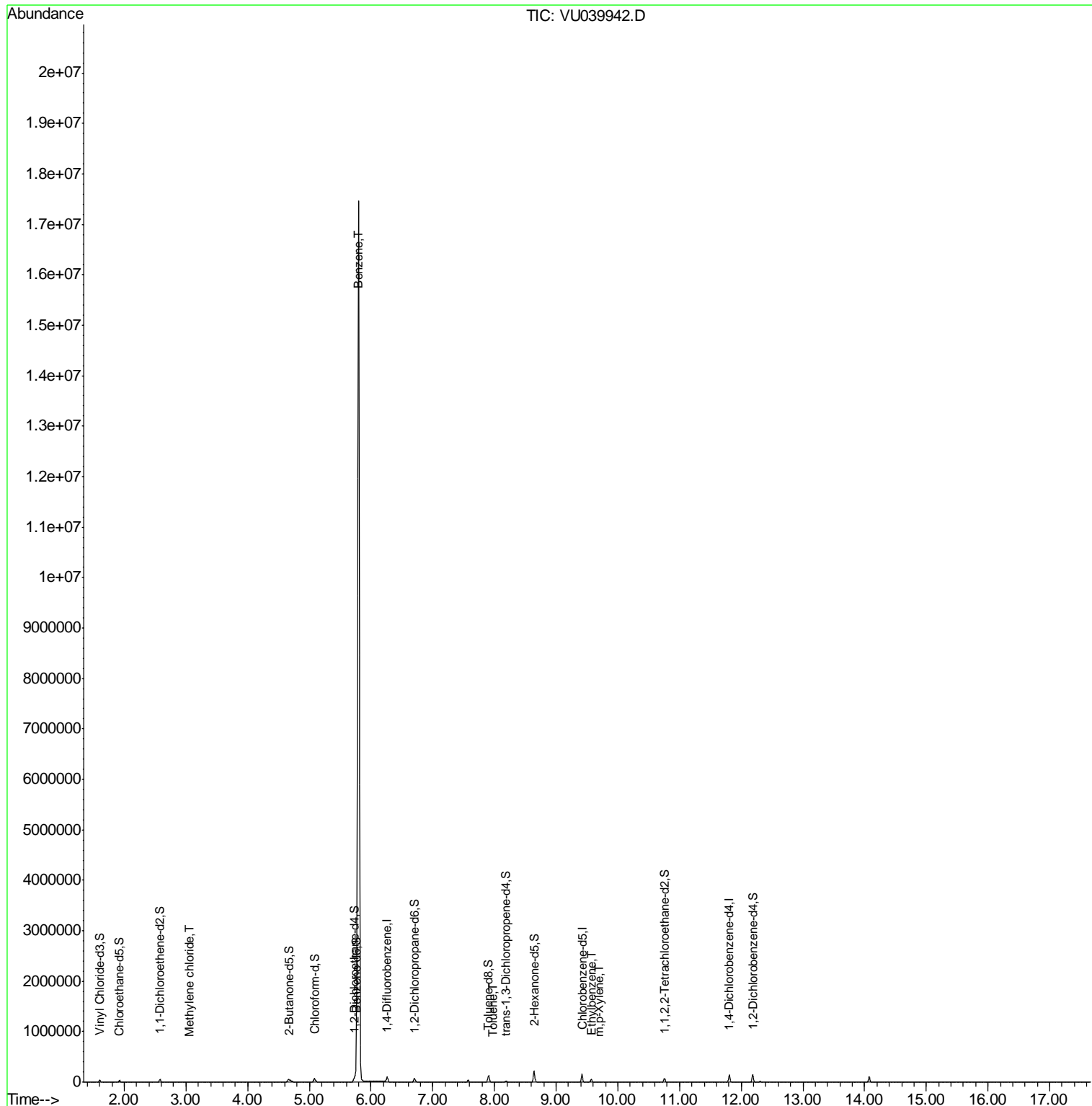
Target Compounds	R.T.	QIon	Response	Conc	Units	Ovalue
16) Methylene chloride	3.06	84	2015	0.211	ug/L	79
33) Benzene	5.80	78	14411111	488.359	ug/L	100
42) Toluene	7.97	91	4433	0.147	ug/L	84
52) Ethylbenzene	9.57	91	39188	1.194	ug/L	99
53) m,p-Xylene	9.70	106	2490	0.198	ug/L	92

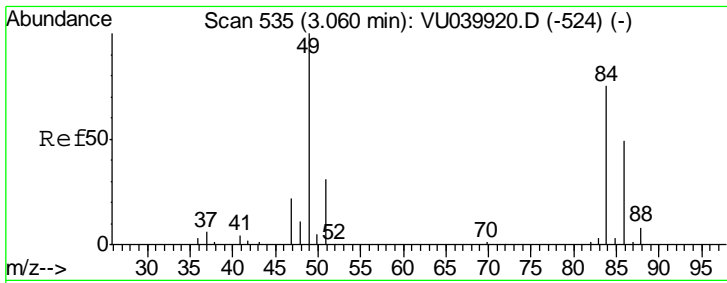
(#) = qualifier out of range (m) = manual integration (+) = signals summed

Data Path : Z:\VOASRV\HPCHEM1\MSVOA U\DATA\VU082120\
 Data File : VU039942.D
 Acq On : 21 Aug 2020 20:51
 Operator : SY/MD
 Sample : L3776-04 100X
 Misc : 25.0mL/MSVOA U/WATER
 ALS Vial : 26 Sample Multiplier: 1

Instrument :
 MSVOA_U
 ClientSampleId :
 F4Y03

Quant Time: Aug 22 03:11:59 2020
 Quant Method : Z:\VOASRV\HPCHEM1\MSVOA_U\METHOD\SOMUTR081920WMA.M
 Quant Title : TRACE VOA SOM01.0
 QLast Update : Sat Aug 22 00:45:05 2020
 Response via : Initial Calibration

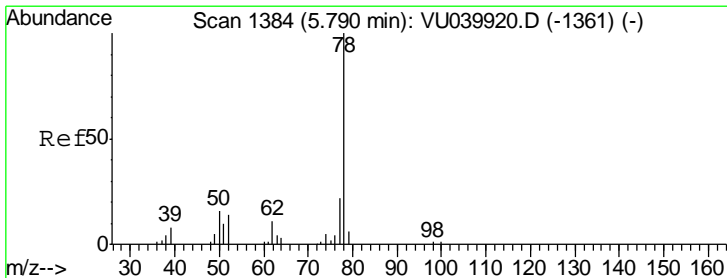
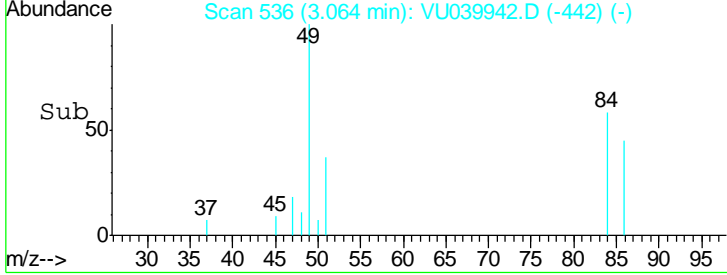
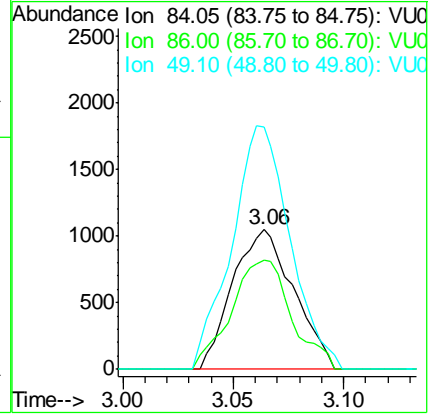
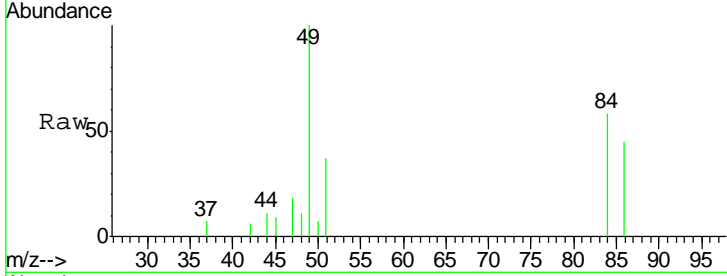




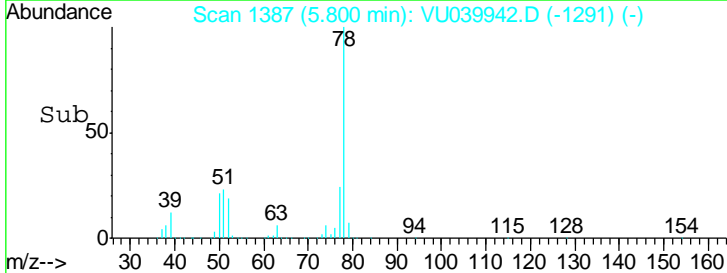
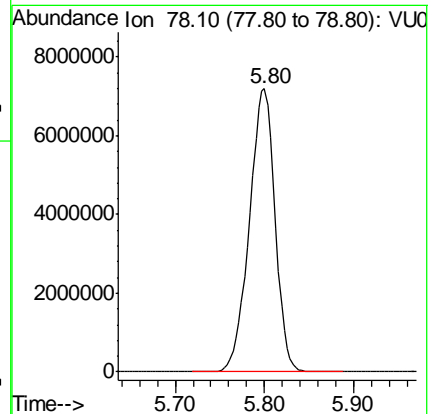
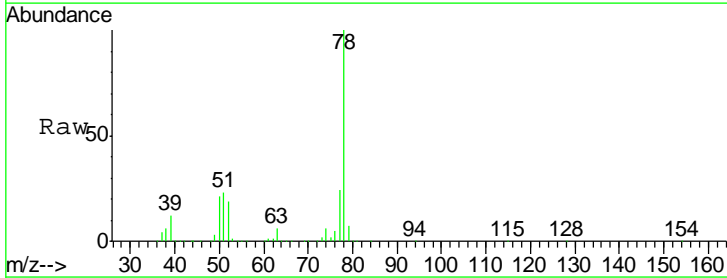
#16
 Methylene chloride
 Concen: 0.211 ug/L
 RT: 3.06 min Scan# 536
 Delta R.T. 0.00 min
 Lab File: VU039942.D
 Acq: 21 Aug 2020 20:51

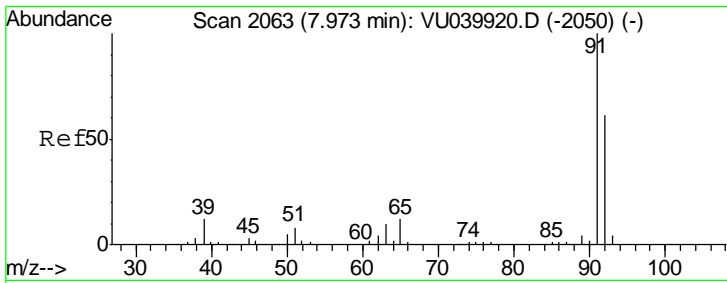
Instrument :
 MSVOA_U
ClientSampled :
 F4Y03

Tgt Ion	Resp	Lower	Upper
84	100		
86	78.3	47.2	87.6
49	172.9	99.8	185.4



#33
 Benzene
 Concen: 488.359 ug/L
 RT: 5.80 min Scan# 1387
 Delta R.T. 0.01 min
 Lab File: VU039942.D
 Acq: 21 Aug 2020 20:51
 Tgt Ion: 78 Resp:14411111

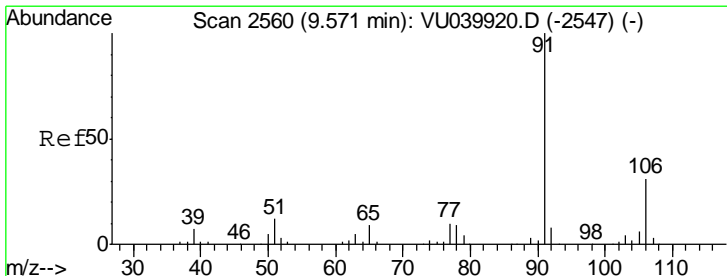
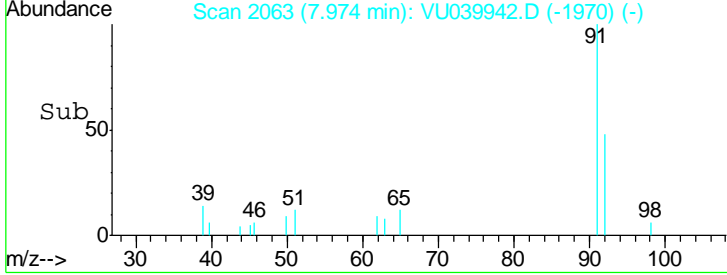
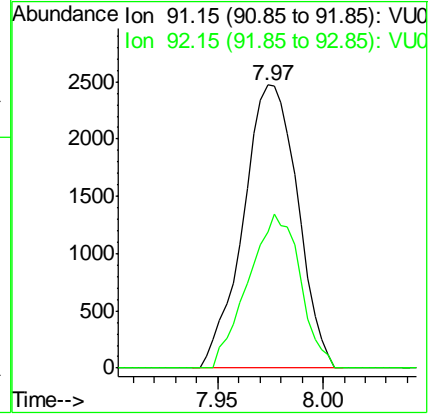
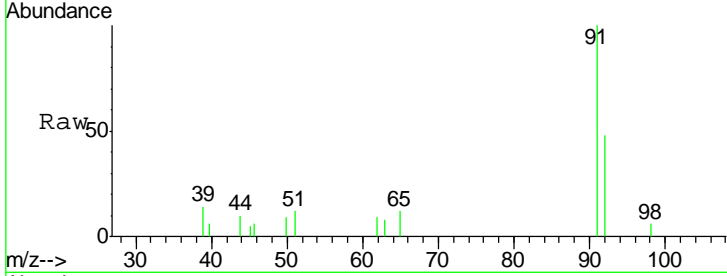




#42
 Toluene
 Concen: 0.147 ug/L
 RT: 7.97 min Scan# 2063
 Delta R.T. 0.00 min
 Lab File: VU039942.D
 Acq: 21 Aug 2020 20:51

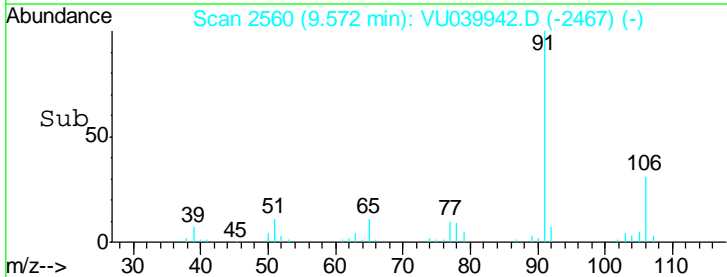
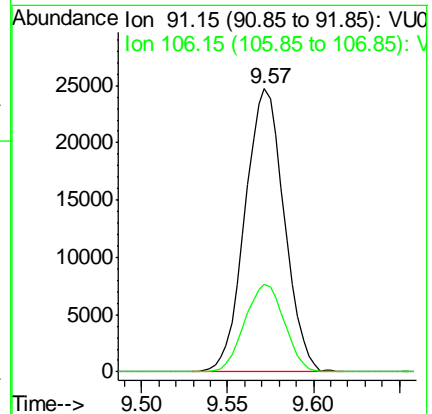
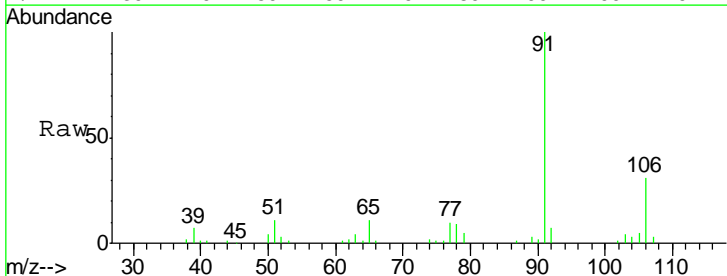
Instrument : MSVOA_U
 ClientSampled : F4Y03

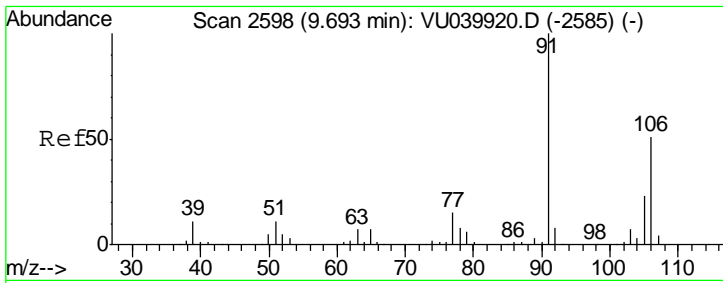
Tgt Ion: 91 Resp: 4433
 Ion Ratio Lower Upper
 91 100
 92 48.0 42.3 78.5



#52
 Ethylbenzene
 Concen: 1.194 ug/L
 RT: 9.57 min Scan# 2560
 Delta R.T. 0.00 min
 Lab File: VU039942.D
 Acq: 21 Aug 2020 20:51

Tgt Ion: 91 Resp: 39188
 Ion Ratio Lower Upper
 91 100
 106 31.0 21.2 39.4





#53
 m,p-Xylene
 Concen: 0.198 ug/L
 RT: 9.70 min Scan# 2599
 Delta R.T. 0.00 min
 Lab File: VU039942.D
 Acq: 21 Aug 2020 20:51

Instrument :
 MSVOA_U
ClientSampled :
 F4Y03

Tot Ion:106 Resp: 2490
 Ion Ratio Lower Upper
 106 100
 91 211.5 139.8 259.6

