

Data Path : Z:\VOASRV\HPCHEM1\MSVOA\_U\DATA\VU082218\  
 Data File : VU026282.D  
 Acq On : 23 Aug 2018 04:47  
 Operator : MD/SY  
 Sample : J4599-14 40X  
 Misc : 5.0mL/MSVOA\_U/WATER  
 ALS Vial : 45 Sample Multiplier: 1

Instrument :  
 MSVOA\_U  
 ClientSampleId :  
 ETOLO

Quant Time: Aug 23 07:48:19 2018  
 Quant Method : Z:\VOASRV\HPCHEM1\MSVOA\_U\METHOD\SOMULM082218WMA.M  
 Quant Title : VOC Analysis  
 QLast Update : Thu Aug 23 07:46:41 2018  
 Response via : Initial Calibration

| Internal Standards         | R.T.  | QIon | Response | Conc  | Units | Dev(Min) |
|----------------------------|-------|------|----------|-------|-------|----------|
| 1) 1,4-Difluorobenzene     | 5.89  | 114  | 284460   | 50.00 | ug/L  | 0.00     |
| 28) Chlorobenzene-d5       | 9.09  | 117  | 280786   | 50.00 | ug/L  | 0.00     |
| 60) 1,4-Dichlorobenzene-d4 | 11.49 | 152  | 132319   | 50.00 | ug/L  | 0.00     |

## System Monitoring Compounds

|                                |         |       |          |          |      |        |
|--------------------------------|---------|-------|----------|----------|------|--------|
| 4) Vinyl Chloride-d3           | 1.40    | 65    | 66882    | 38.55    | ug/L | 0.00   |
| Spiked Amount                  | 50.000  | Range | 60 - 135 | Recovery | =    | 77.10% |
| 7) Chloroethane-d5             | 1.68    | 69    | 59687    | 42.19    | ug/L | 0.00   |
| Spiked Amount                  | 50.000  | Range | 70 - 130 | Recovery | =    | 84.38% |
| 11) 1,1-Dichloroethene-d2      | 2.27    | 63    | 108815   | 31.91    | ug/L | 0.00   |
| Spiked Amount                  | 50.000  | Range | 60 - 125 | Recovery | =    | 63.82% |
| 21) 2-Butanone-d5              | 4.18    | 46    | 131169   | 94.72    | ug/L | 0.00   |
| Spiked Amount                  | 100.000 | Range | 40 - 130 | Recovery | =    | 94.72% |
| 24) Chloroform-d               | 4.65    | 84    | 168476   | 43.56    | ug/L | 0.00   |
| Spiked Amount                  | 50.000  | Range | 70 - 125 | Recovery | =    | 87.12% |
| 26) 1,2-Dichloroethane-d4      | 5.31    | 65    | 113733   | 45.19    | ug/L | 0.00   |
| Spiked Amount                  | 50.000  | Range | 70 - 125 | Recovery | =    | 90.38% |
| 32) Benzene-d6                 | 5.35    | 84    | 320753   | 42.70    | ug/L | 0.00   |
| Spiked Amount                  | 50.000  | Range | 70 - 125 | Recovery | =    | 85.40% |
| 36) 1,2-Dichloropropane-d6     | 6.33    | 67    | 106228   | 44.04    | ug/L | 0.00   |
| Spiked Amount                  | 50.000  | Range | 70 - 120 | Recovery | =    | 88.08% |
| 41) Toluene-d8                 | 7.57    | 98    | 291853   | 40.65    | ug/L | 0.00   |
| Spiked Amount                  | 50.000  | Range | 80 - 120 | Recovery | =    | 81.30% |
| 43) trans-1,3-Dichloropropene- | 7.85    | 79    | 49098    | 39.40    | ug/L | 0.00   |
| Spiked Amount                  | 50.000  | Range | 60 - 125 | Recovery | =    | 78.80% |
| 47) 2-Hexanone-d5              | 8.31    | 63    | 89728    | 87.04    | ug/L | 0.00   |
| Spiked Amount                  | 100.000 | Range | 45 - 130 | Recovery | =    | 87.04% |
| 57) 1,1,2,2-Tetrachloroethane- | 10.43   | 84    | 152519   | 42.73    | ug/L | 0.00   |
| Spiked Amount                  | 50.000  | Range | 65 - 120 | Recovery | =    | 85.46% |
| 64) 1,2-Dichlorobenzene-d4     | 11.86   | 152   | 129170   | 46.01    | ug/L | 0.00   |
| Spiked Amount                  | 50.000  | Range | 80 - 120 | Recovery | =    | 92.02% |

## Target Compounds

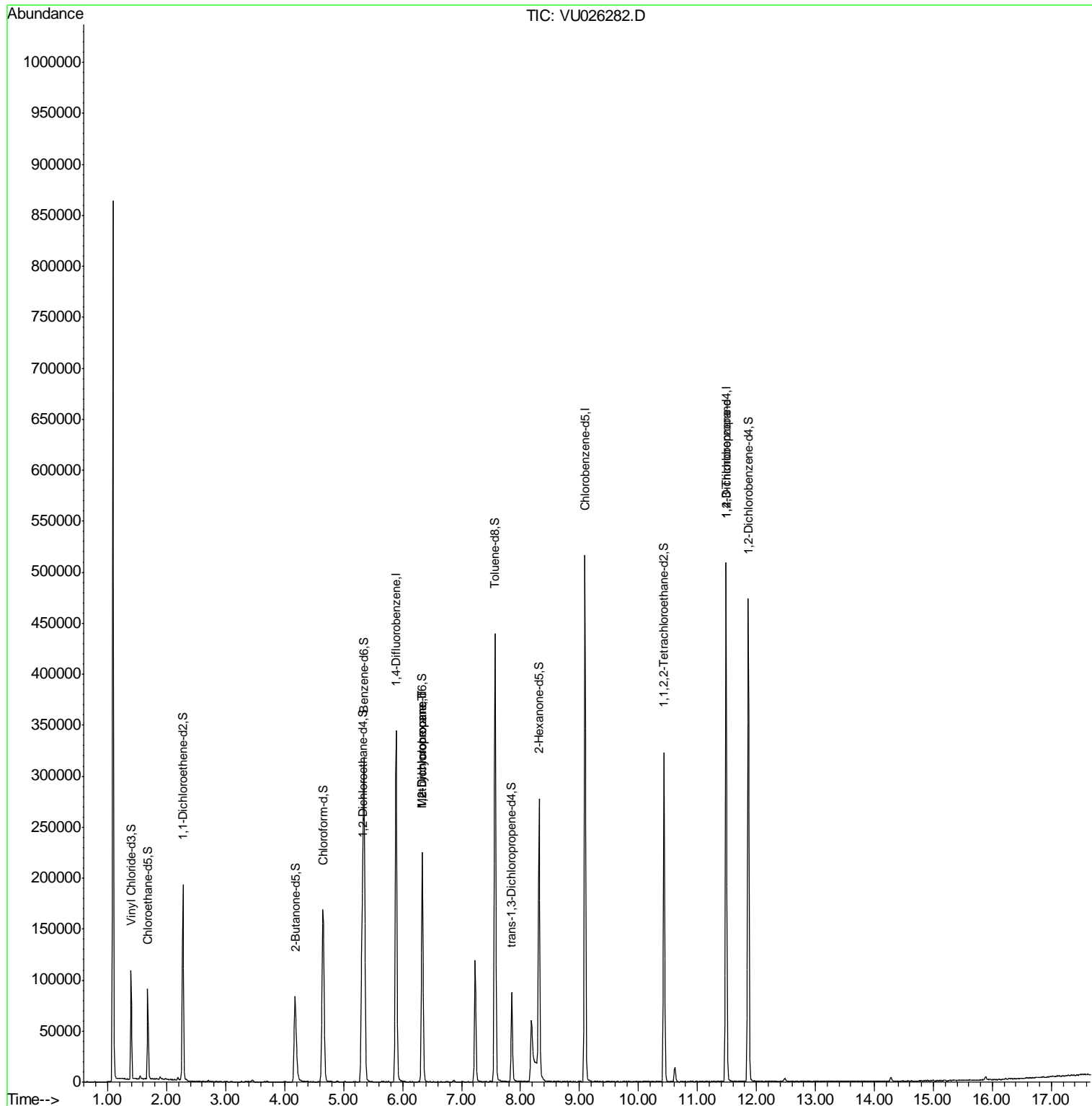
| Target Compounds           | R.T.  | QIon | Response | Conc  | Units  | Qvalue |
|----------------------------|-------|------|----------|-------|--------|--------|
| 35) Methylcyclohexane      | 6.34  | 83   | 25548    | 8.254 | ug/L # | 19     |
| 37) 1,2-Dichloropropane    | 6.33  | 63   | 12283    | 5.871 | ug/L # | 88     |
| 59) 1,2,3-Trichloropropane | 11.48 | 75   | 14559    | 5.582 | ug/L # | 88     |

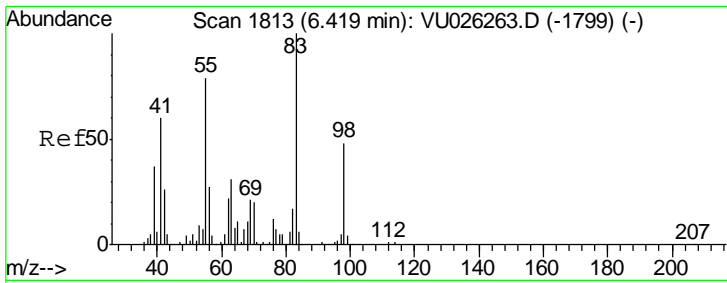
(#) = qualifier out of range (m) = manual integration (+) = signals summed

Data Path : Z:\VOASRV\HPCHEM1\MSVOA\_U\DATA\VU082218\  
 Data File : VU026282.D  
 Acq On : 23 Aug 2018 04:47  
 Operator : MD/SY  
 Sample : J4599-14 40X  
 Misc : 5.0mL/MSVOA\_U/WATER  
 ALS Vial : 45 Sample Multiplier: 1

Instrument :  
 MSVOA\_U  
 ClientSampled :  
 ETOL0

Quant Time: Aug 23 07:48:19 2018  
 Quant Method : Z:\VOASRV\HPCHEM1\MSVOA\_U\METHOD\SOMULM082218WMA.M  
 Quant Title : VOC Analysis  
 QLast Update : Thu Aug 23 07:46:41 2018  
 Response via : Initial Calibration

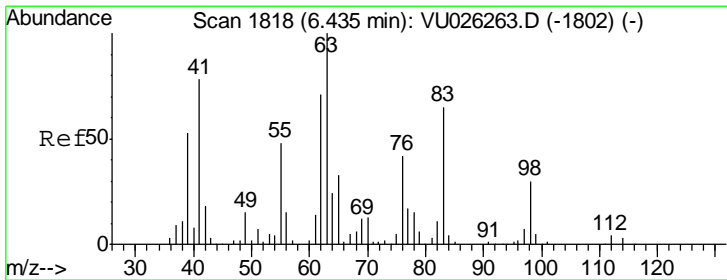
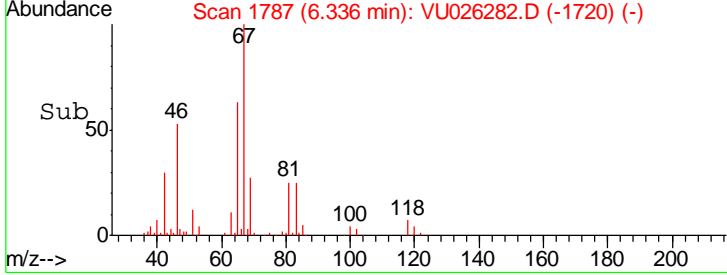
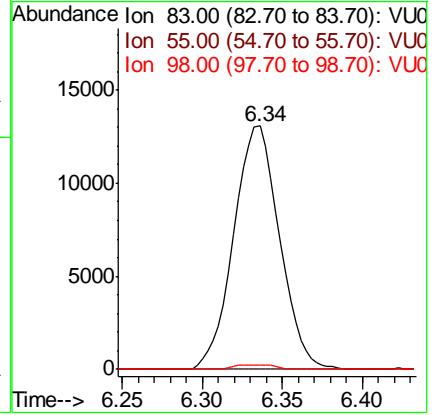
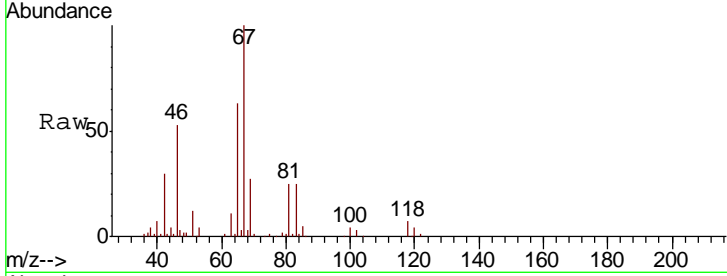




#35  
 Methylcyclohexane  
 Concen: 8.254 ug/L  
 RT: 6.34 min Scan# 1787  
 Delta R.T. -0.08 min  
 Lab File: VU026282.D  
 Acq: 23 Aug 2018 04:47

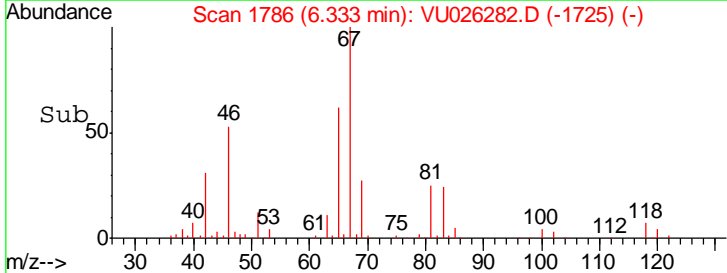
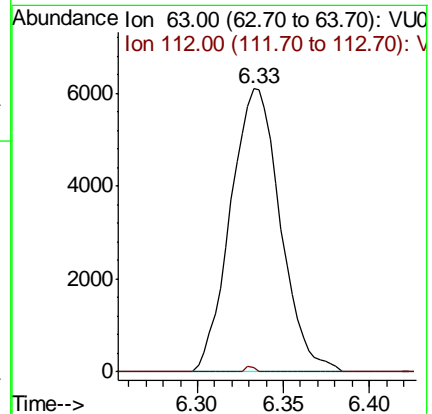
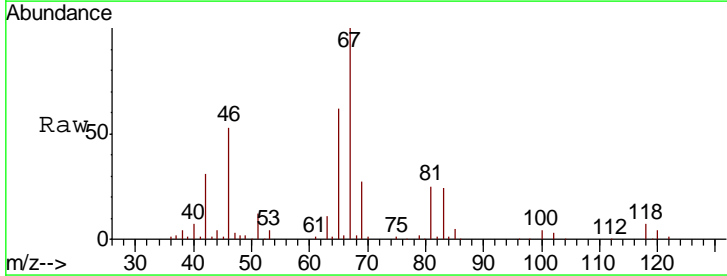
Instrument :  
 MSVOA\_U  
 ClientSampled :  
 ETOLO

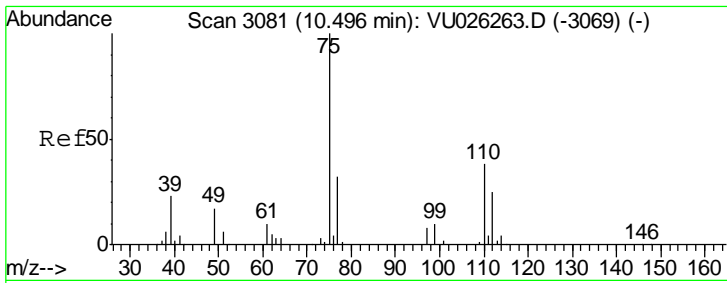
| Tgt Ion | Resp  | Lower | Upper |
|---------|-------|-------|-------|
| 83      | 25548 |       |       |
| 55      | 0.0   | 60.6  | 91.0# |
| 98      | 0.8   | 36.8  | 55.2# |



#37  
 1,2-Dichloropropane  
 Concen: 5.871 ug/L  
 RT: 6.33 min Scan# 1786  
 Delta R.T. -0.10 min  
 Lab File: VU026282.D  
 Acq: 23 Aug 2018 04:47

| Tgt Ion | Resp  | Lower | Upper |
|---------|-------|-------|-------|
| 63      | 12283 |       |       |
| 112     | 0.4   | 3.4   | 5.2#  |





#59  
 1,2,3-Trichloropropane  
 Concen: 5.582 ug/L  
 RT: 11.48 min Scan# 3388  
 Delta R.T. 0.99 min  
 Lab File: VU026282.D  
 Acq: 23 Aug 2018 04:47

Instrument :  
 MSVOA\_U  
 ClientSampled :  
 ETOLO

Tgt Ion: 75 Resp: 14559  
 Ion Ratio Lower Upper  
 75 100  
 77 38.7 25.5 38.3#

