

Data Path : Z:\VOASRV\HPCHEM1\MSVOA U\DATA\VU082218\
 Data File : VU026259.D
 Acq On : 22 Aug 2018 19:55
 Operator : MD/SY
 Sample : J4598-12 40X
 Misc : 5.0mL/MSVOA U/WATER
 ALS Vial : 22 Sample Multiplier: 1

Instrument :
 MSVOA_U
 ClientSampleId :
 ETBN7

Integration Parameters: LSCINT.P

Integrator: RTE
 Smoothing : OFF
 Sampling : 1
 Start Thrs: 0.2
 Stop Thrs : 0

Filtering: 5
 Min Area: 0 % of largest Peak
 Max Peaks: 100
 Peak Location: TOP

If leading or trailing edge < 100 prefer < Baseline drop else tangent >
 Peak separation: 5

Method : Z:\VOASRV\HPCHEM1\MSVOA_U\METHOD\SOMULM082218WMA.M
 Title : VOC Analysis

Signal : TIC

peak #	R.T. min	first scan	max scan	last scan	PK TY	peak height	corr. area	corr. % max.	% of total
1	0.683	26	29	32	rBV2	175	149	0.01%	0.002%
2	0.703	32	35	39	rVV2	253	186	0.02%	0.002%
3	0.767	53	55	57	rBV2	270	138	0.01%	0.001%
4	0.876	84	89	91	rBV2	153	134	0.01%	0.001%
5	0.902	95	97	100	rBV2	172	116	0.01%	0.001%
6	0.918	100	102	104	rBV	189	132	0.01%	0.001%
7	0.963	114	116	120	rBV2	180	159	0.01%	0.002%
8	1.005	126	129	133	rVB2	206	153	0.01%	0.002%
9	1.088	146	155	174	rBV	884883	971557	88.62%	10.056%
10	1.397	244	251	262	rBV	128572	131268	11.97%	1.359%
11	1.680	332	339	354	rVB	100740	126411	11.53%	1.308%
12	2.272	513	523	536	rBV	221143	334664	30.53%	3.464%
13	2.612	626	629	631	rBV	740	499	0.05%	0.005%
14	2.815	689	692	693	rBV	487	246	0.02%	0.003%
15	3.034	757	760	761	rBV	231	105	0.01%	0.001%
16	3.063	766	769	770	rBV	320	160	0.01%	0.002%
17	3.220	816	818	822	rBV	213	159	0.01%	0.002%
18	3.426	879	882	884	rBV2	275	140	0.01%	0.001%
19	3.445	884	888	892	rVV2	415	377	0.03%	0.004%
20	3.490	900	902	904	rBV2	204	103	0.01%	0.001%
21	3.558	920	923	925	rBV	375	285	0.03%	0.003%
22	3.600	933	936	937	rBV	239	135	0.01%	0.001%
23	3.683	958	962	966	rBV	494	317	0.03%	0.003%
24	3.722	972	974	977	rBV2	176	114	0.01%	0.001%
25	3.789	993	995	998	rBV	220	158	0.01%	0.002%
26	3.847	1008	1013	1017	rBV2	299	342	0.03%	0.004%
27	3.998	1057	1060	1061	rBV	238	111	0.01%	0.001%
28	4.040	1069	1073	1074	rBV2	164	121	0.01%	0.001%
29	4.079	1081	1085	1090	rBV	206	152	0.01%	0.002%
30	4.178	1102	1116	1152	rBV2	99367	265522	24.22%	2.748%
31	4.387	1179	1181	1184	rBV3	339	304	0.03%	0.003%
32	4.471	1206	1207	1210	rBV	296	167	0.02%	0.002%
33	4.542	1224	1229	1233	rBV2	337	445	0.04%	0.005%
34	4.587	1238	1243	1246	rBV2	374	262	0.02%	0.003%

Data Path : Z:\VOASRV\HPCHEM1\MSVOA U\DATA\VU082218\
 Data File : VU026259.D
 Acq On : 22 Aug 2018 19:55
 Operator : MD/SY
 Sample : J4598-12 40X
 Misc : 5.0mL/MSVOA U/WATER
 ALS Vial : 22 Sample Multiplier: 1

Instrument :
 MSVOA_U
 ClientSampled :
 ETBN7

Integration Parameters: LSCINT.P

Integrator: RTE
 Smoothing : OFF
 Sampling : 1
 Start Thrs: 0.2
 Stop Thrs : 0

Filtering: 5
 Min Area: 0 % of largest Peak
 Max Peaks: 100
 Peak Location: TOP

If leading or trailing edge < 100 prefer < Baseline drop else tangent >
 Peak separation: 5

Method : Z:\VOASRV\HPCHEM1\MSVOA_U\METHOD\SOMULM082218WMA.M
 Title : VOC Analysis

35	4.651	1246	1263	1292	rBV2	190892	452546	41.28%	4.684%
36	4.850	1322	1325	1328	rBV	226	118	0.01%	0.001%
37	4.899	1328	1340	1345	rVB4	863	1585	0.14%	0.016%
38	4.921	1345	1347	1349	rBV	167	102	0.01%	0.001%
39	5.056	1382	1389	1391	rBV2	230	185	0.02%	0.002%
40	5.072	1391	1394	1398	rBV2	263	201	0.02%	0.002%
41	5.114	1404	1407	1410	rBV	338	179	0.02%	0.002%
42	5.178	1424	1427	1429	rVB	262	169	0.02%	0.002%
43	5.194	1429	1432	1435	rBV2	236	200	0.02%	0.002%
44	5.230	1440	1443	1447	rVB	401	266	0.02%	0.003%
45	5.342	1447	1478	1502	rBV2	370132	1096309	100.00%	11.348%
46	5.516	1529	1532	1535	rBV2	187	123	0.01%	0.001%
47	5.545	1535	1541	1543	rBV3	537	496	0.05%	0.005%
48	5.590	1551	1555	1558	rBV2	314	307	0.03%	0.003%
49	5.638	1568	1570	1572	rVB2	428	184	0.02%	0.002%
50	5.670	1577	1580	1584	rBV2	132	120	0.01%	0.001%
51	5.731	1596	1599	1603	rBV2	307	184	0.02%	0.002%
52	5.754	1603	1606	1611	rVB2	304	271	0.02%	0.003%
53	5.837	1630	1632	1633	rBV	250	109	0.01%	0.001%
54	5.889	1634	1648	1667	rVV	342971	668491	60.98%	6.919%
55	6.040	1693	1695	1698	rVB	290	160	0.01%	0.002%
56	6.056	1698	1700	1702	rBV	297	189	0.02%	0.002%
57	6.136	1724	1725	1729	rVB	195	100	0.01%	0.001%
58	6.162	1729	1733	1734	rBV	398	232	0.02%	0.002%
59	6.255	1759	1762	1763	rBV	278	155	0.01%	0.002%
60	6.333	1770	1786	1811	rBV	256959	507004	46.25%	5.248%
61	6.458	1821	1825	1826	rBV	597	368	0.03%	0.004%
62	6.535	1843	1849	1852	rBV2	263	215	0.02%	0.002%
63	6.554	1852	1855	1858	rVV	371	225	0.02%	0.002%
64	6.583	1862	1864	1869	rVB2	297	202	0.02%	0.002%
65	6.628	1874	1878	1880	rVV2	337	305	0.03%	0.003%
66	6.654	1884	1886	1888	rVB	330	121	0.01%	0.001%
67	6.686	1893	1896	1898	rBV2	340	197	0.02%	0.002%
68	6.863	1942	1951	1962	rBV7	1656	3361	0.31%	0.035%
69	7.014	1992	1998	1999	rBV	196	168	0.02%	0.002%
70	7.056	2007	2011	2014	rBV3	314	336	0.03%	0.003%
71	7.149	2035	2040	2042	rBV	232	233	0.02%	0.002%

Data Path : Z:\VOASRV\HPCHEM1\MSVOA U\DATA\VU082218\
 Data File : VU026259.D
 Acq On : 22 Aug 2018 19:55
 Operator : MD/SY
 Sample : J4598-12 40X
 Misc : 5.0mL/MSVOA U/WATER
 ALS Vial : 22 Sample Multiplier: 1

Instrument :
 MSVOA_U
 ClientSampleId :
 ETBN7

Integration Parameters: LSCINT.P

Integrator: RTE
 Smoothing : OFF
 Sampling : 1
 Start Thrs: 0.2
 Stop Thrs : 0

Filtering: 5
 Min Area: 0 % of largest Peak
 Max Peaks: 100
 Peak Location: TOP

If leading or trailing edge < 100 prefer < Baseline drop else tangent >
 Peak separation: 5

Method : Z:\VOASRV\HPCHEM1\MSVOA_U\METHOD\SOMULM082218WMA.M
 Title : VOC Analysis

72	7.230	2053	2065	2086	rBV	144897	252208	23.01%	2.611%
73	7.490	2143	2146	2149	rBV3	358	300	0.03%	0.003%
74	7.567	2157	2170	2189	rBV	509881	870714	79.42%	9.012%
75	7.808	2242	2245	2247	rBV2	313	161	0.01%	0.002%
76	7.850	2247	2258	2280	rBV	105988	179533	16.38%	1.858%
77	8.188	2347	2363	2382	rBV	56074	171579	15.65%	1.776%
78	8.313	2394	2402	2419	rVB	322310	534887	48.79%	5.536%
79	8.660	2507	2510	2511	rBV2	479	294	0.03%	0.003%
80	8.705	2522	2524	2526	rBV2	208	127	0.01%	0.001%
81	8.757	2537	2540	2542	rBV2	301	246	0.02%	0.003%
82	8.947	2596	2599	2601	rBV	173	108	0.01%	0.001%
83	9.011	2616	2619	2625	rVB2	350	351	0.03%	0.004%
84	9.091	2632	2644	2667	rBV	505209	822347	75.01%	8.512%
85	9.246	2691	2692	2693	rBV	396	129	0.01%	0.001%
86	9.336	2717	2720	2722	rBV2	296	248	0.02%	0.003%
87	9.693	2828	2831	2834	rBV2	273	178	0.02%	0.002%
88	9.947	2905	2910	2911	rBV2	427	299	0.03%	0.003%
89	10.313	3022	3024	3027	rBV2	213	109	0.01%	0.001%
90	10.387	3044	3047	3049	rBV2	452	314	0.03%	0.003%
91	10.432	3049	3061	3079	rVV	363553	580748	52.97%	6.011%
92	10.615	3108	3118	3133	rVB2	13581	25335	2.31%	0.262%
93	10.728	3151	3153	3156	rVB	322	172	0.02%	0.002%
94	10.770	3163	3166	3168	rBV2	264	145	0.01%	0.002%
95	10.876	3192	3199	3206	rBV5	821	1314	0.12%	0.014%
96	11.397	3358	3361	3363	rBV2	341	265	0.02%	0.003%
97	11.487	3376	3389	3411	rBV	496355	785709	71.67%	8.133%
98	11.863	3493	3506	3526	rBV	542152	861589	78.59%	8.918%
99	12.143	3590	3593	3598	rBV2	549	532	0.05%	0.006%
100	12.207	3610	3613	3615	rBB2	457	271	0.02%	0.003%

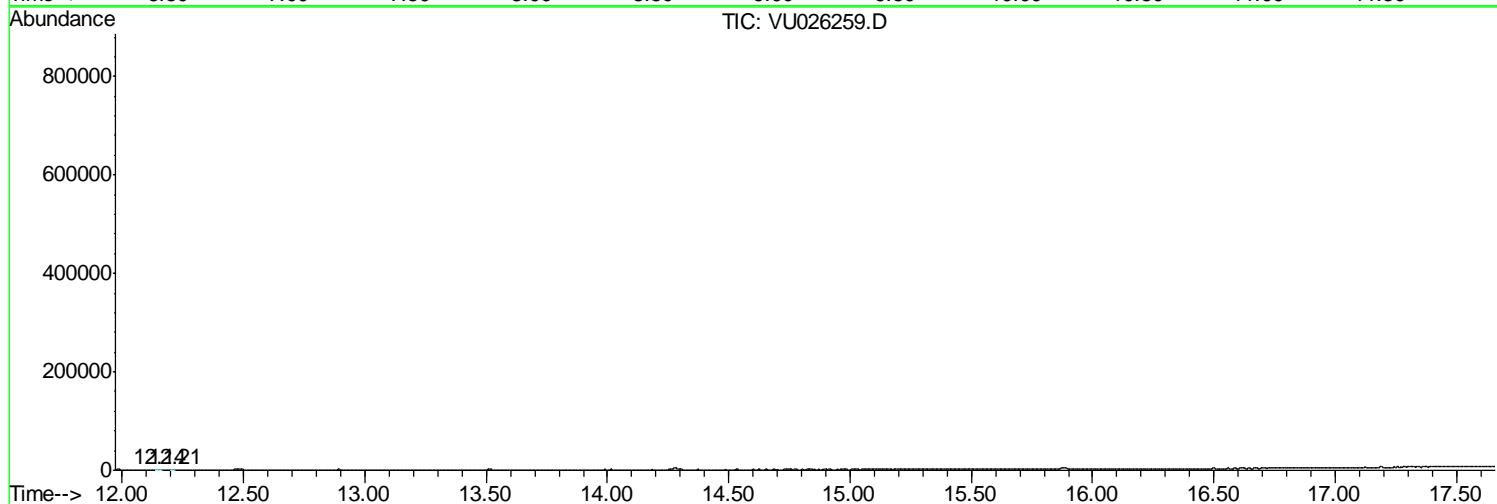
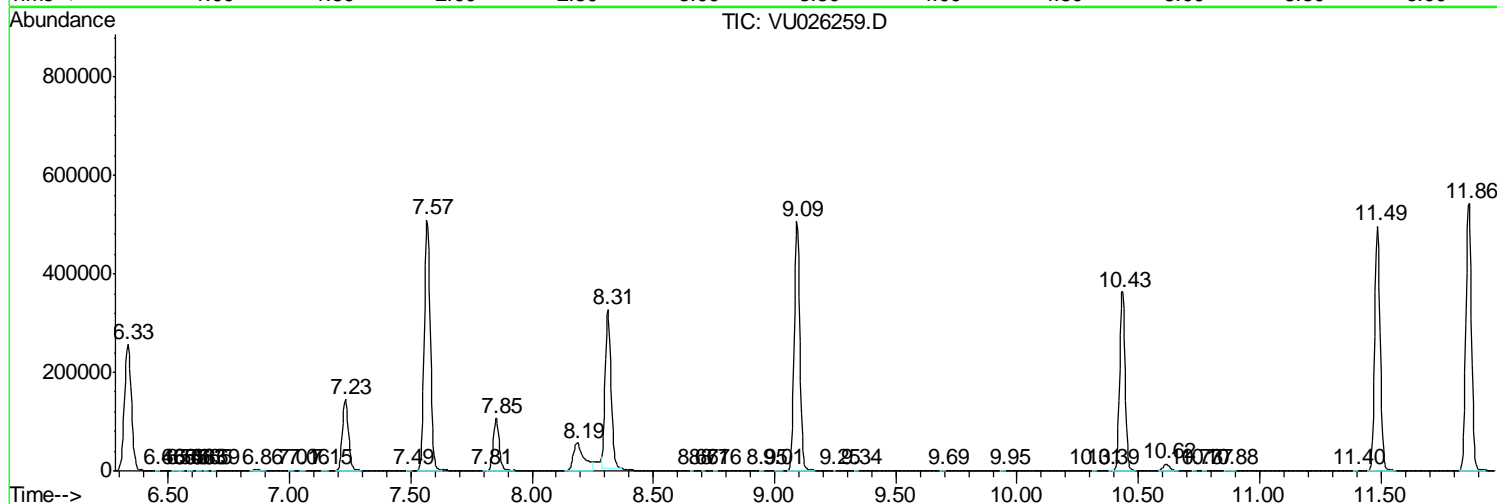
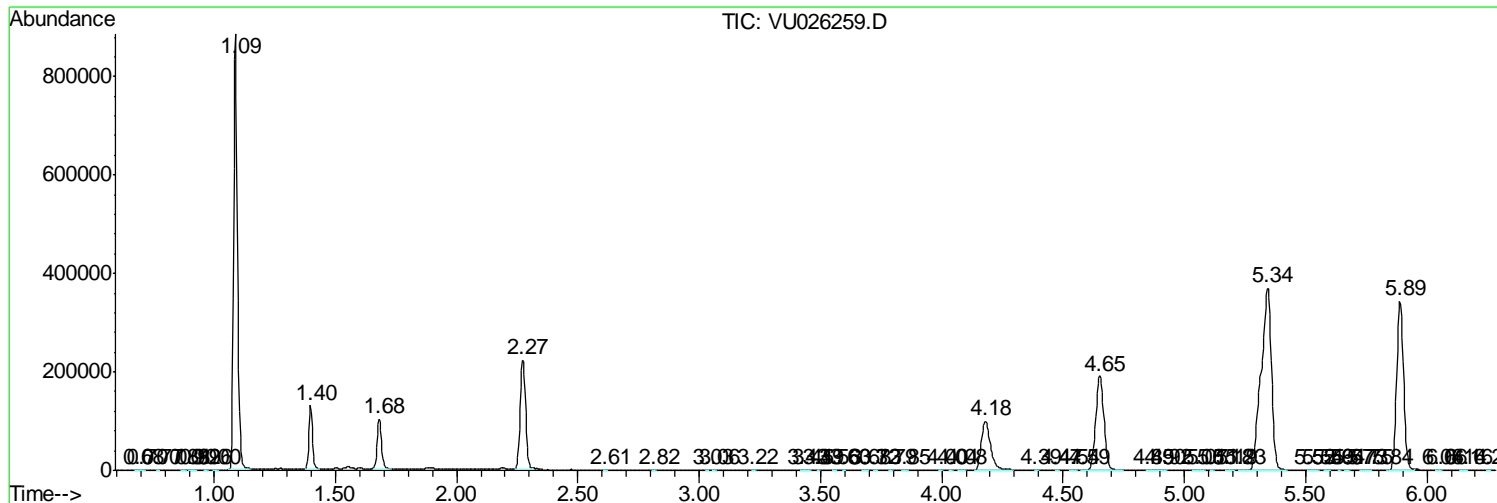
Sum of corrected areas: 9661219

Data Path : Z:\VOASRV\HPCHEM1\MSVOA U\DATA\VU082218\
 Data File : VU026259.D
 Acq On : 22 Aug 2018 19:55
 Operator : MD/SY
 Sample : J4598-12 40X
 Misc : 5.0mL/MSVOA U/WATER
 ALS Vial : 22 Sample Multiplier: 1

Instrument :
 MSVOA_U
 ClientSampleId :
 ETBN7

Quant Method : Z:\VOASRV\HPCHEM1\MSVOA_U\METHOD\SOMULM082218WMA.M
 Quant Title : VOC Analysis

TIC Library : C:\DATABASE\NIST11.L
 TIC Integration Parameters: LSCINT.P



Data Path : Z:\VOASRV\HPCHEM1\MSVOA_U\DATA\VU082218\
Data File : VU026259.D
Acq On : 22 Aug 2018 19:55
Operator : MD/SY
Sample : J4598-12 40X
Misc : 5.0mL/MSVOA_U/WATER
ALS Vial : 22 Sample Multiplier: 1

Instrument :
MSVOA_U
ClientSampleId :
ETBN7

Quant Method : Z:\VOASRV\HPCHEM1\MSVOA_U\METHOD\SOMULM082218WMA.M
Quant Title : VOC Analysis

TIC Library : C:\DATABASE\NIST11.L
TIC Integration Parameters: LSCINT.P

No Library Search Compounds Detected

Data Path : Z:\VOASRV\HPCHEM1\MSVOA_U\DATA\VU082218\
Data File : VU026259.D
Acq On : 22 Aug 2018 19:55
Operator : MD/SY
Sample : J4598-12 40X
Misc : 5.0mL/MSVOA_U/WATER
ALS Vial : 22 Sample Multiplier: 1

Instrument :
MSVOA_U
ClientSampleId :
ETBN7

Quant Method : Z:\VOASRV\HPCHEM1\MSVOA_U\METHOD\SOMULM082218WMA.M
Quant Title : VOC Analysis

TIC Library : C:\DATABASE\NIST11.L
TIC Integration Parameters: LSCINT.P

TIC Top Hit name	RT	EstConc	Units	Response	--Internal Standard--			
					#	RT	Resp	Conc
