

Data Path : Z:\VOASRV\HPCHEM1\MSVOA\_U\DATA\VU082418\  
 Data File : VU026330.D  
 Acq On : 24 Aug 2018 13:55  
 Operator : MD/SY  
 Sample : J4624-04ME 10X  
 Misc : 6.29g/5.0mL/100uL/5.0mL/MSVOA\_U/MEOH  
 ALS Vial : 5 Sample Multiplier: 1

Instrument :  
 MSVOA\_U  
 Client Sampled :  
 E4430ME

Manual Integrations  
 APPROVED

MMDadoda  
 8/25/2018 1:14:16 PM

Quant Time: Aug 25 03:54:41 2018  
 Quant Method : Z:\VOASRV\HPCHEM1\MSVOA\_U\METHOD\SOMULM082218WMA.M  
 Quant Title : VOC Analysis  
 QLast Update : Sat Aug 25 02:29:46 2018  
 Response via : Initial Calibration

| Internal Standards         | R.T.  | QIon | Response | Conc  | Units | Dev(Min) |
|----------------------------|-------|------|----------|-------|-------|----------|
| 1) 1,4-Difluorobenzene     | 5.89  | 114  | 313688   | 50.00 | ug/L  | 0.00     |
| 28) Chlorobenzene-d5       | 9.09  | 117  | 305113   | 50.00 | ug/L  | 0.00     |
| 60) 1,4-Dichlorobenzene-d4 | 11.49 | 152  | 140180   | 50.00 | ug/L  | 0.00     |

## System Monitoring Compounds

|                                |         |       |          |          |      |         |
|--------------------------------|---------|-------|----------|----------|------|---------|
| 4) Vinyl Chloride-d3           | 1.40    | 65    | 67528    | 35.29    | ug/L | 0.00    |
| Spiked Amount                  | 50.000  | Range | 60 - 135 | Recovery | =    | 70.58%  |
| 7) Chloroethane-d5             | 1.66    | 69    | 60702    | 38.91    | ug/L | -0.02   |
| Spiked Amount                  | 50.000  | Range | 70 - 130 | Recovery | =    | 77.82%  |
| 11) 1,1-Dichloroethene-d2      | 2.27    | 63    | 105199   | 27.97    | ug/L | 0.00    |
| Spiked Amount                  | 50.000  | Range | 60 - 125 | Recovery | =    | 55.94%# |
| 21) 2-Butanone-d5              | 4.18    | 46    | 117158   | 76.72    | ug/L | 0.00    |
| Spiked Amount                  | 100.000 | Range | 40 - 130 | Recovery | =    | 76.72%  |
| 24) Chloroform-d               | 4.65    | 84    | 163561   | 38.35    | ug/L | 0.00    |
| Spiked Amount                  | 50.000  | Range | 70 - 125 | Recovery | =    | 76.70%  |
| 26) 1,2-Dichloroethane-d4      | 5.31    | 65    | 109221   | 39.35    | ug/L | 0.00    |
| Spiked Amount                  | 50.000  | Range | 70 - 125 | Recovery | =    | 78.70%  |
| 32) Benzene-d6                 | 5.34    | 84    | 320855   | 39.31    | ug/L | 0.00    |
| Spiked Amount                  | 50.000  | Range | 70 - 125 | Recovery | =    | 78.62%  |
| 36) 1,2-Dichloropropane-d6     | 6.33    | 67    | 105191   | 40.14    | ug/L | 0.00    |
| Spiked Amount                  | 50.000  | Range | 70 - 120 | Recovery | =    | 80.28%  |
| 41) Toluene-d8                 | 7.57    | 98    | 286952   | 36.78    | ug/L | 0.00    |
| Spiked Amount                  | 50.000  | Range | 80 - 120 | Recovery | =    | 73.56%# |
| 43) trans-1,3-Dichloropropene- | 7.85    | 79    | 49009    | 36.19    | ug/L | 0.00    |
| Spiked Amount                  | 50.000  | Range | 60 - 125 | Recovery | =    | 72.38%  |
| 47) 2-Hexanone-d5              | 8.31    | 63    | 85702    | 76.51    | ug/L | 0.00    |
| Spiked Amount                  | 100.000 | Range | 45 - 130 | Recovery | =    | 76.51%  |
| 57) 1,1,2,2-Tetrachloroethane- | 10.43   | 84    | 151662   | 39.10    | ug/L | 0.00    |
| Spiked Amount                  | 50.000  | Range | 65 - 120 | Recovery | =    | 78.20%  |
| 64) 1,2-Dichlorobenzene-d4     | 11.86   | 152   | 123678   | 41.58    | ug/L | 0.00    |
| Spiked Amount                  | 50.000  | Range | 80 - 120 | Recovery | =    | 83.16%  |

| Target Compounds           | R.T. | QIon | Response | Conc  | Units | Qvalue |
|----------------------------|------|------|----------|-------|-------|--------|
| 20) cis-1,2-Dichloroethene | 4.23 | 96   | 3934m    | 1.751 | ug/L  |        |
| 34) Trichloroethene        | 6.19 | 95   | 6637     | 3.017 | ug/L  | 98     |
| 46) Tetrachloroethene      | 8.23 | 164  | 17066    | 9.017 | ug/L  | 95     |

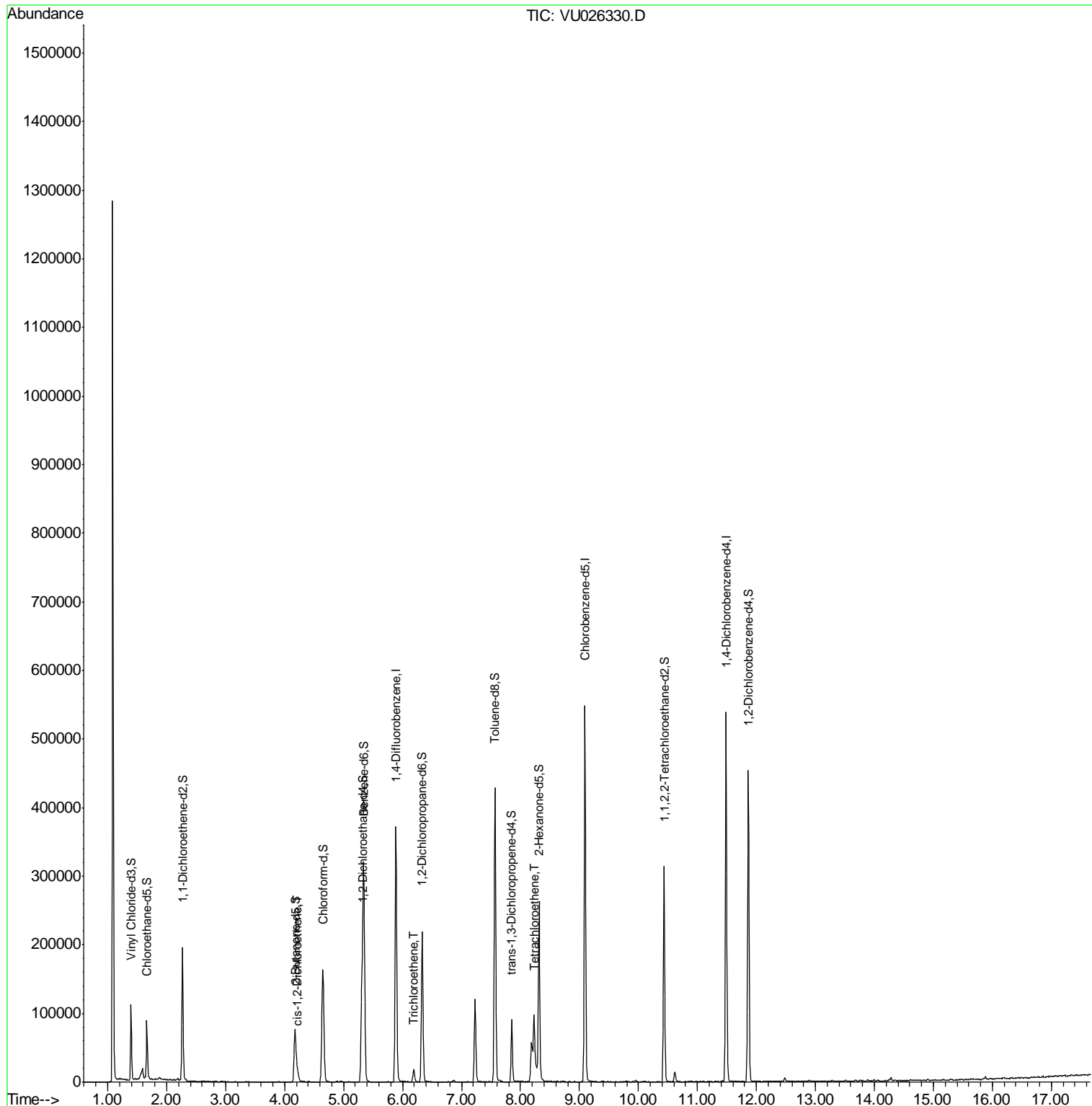
(#) = qualifier out of range (m) = manual integration (+) = signals summed

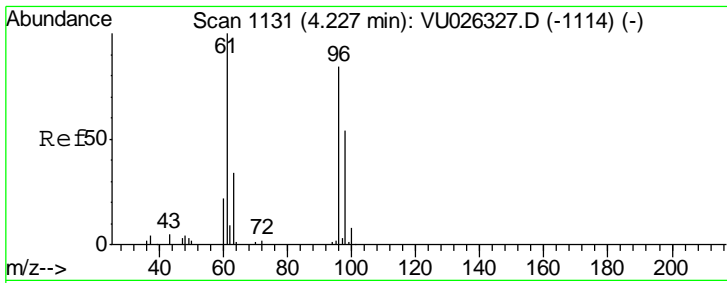
Data Path : Z:\VOASRV\HPCHEM1\MSVOA\_U\DATA\VU082418\  
 Data File : VU026330.D  
 Acq On : 24 Aug 2018 13:55  
 Operator : MD/SY  
 Sample : J4624-04ME 10X  
 Misc : 6.29g/5.0mL/100uL/5.0mL/MSVOA\_U/MEOH  
 ALS Vial : 5 Sample Multiplier: 1

**Instrument :**  
 MSVOA\_U  
**Client Sampled :**  
 E4430ME

**Manual Integrations**  
**APPROVED**  
 MMDadoda  
 8/25/2018 1:14:16 PM

Quant Time: Aug 25 03:54:41 2018  
 Quant Method : Z:\VOASRV\HPCHEM1\MSVOA\_U\METHOD\SOMULM082218WMA.M  
 Quant Title : VOC Analysis  
 QLast Update : Sat Aug 25 02:29:46 2018  
 Response via : Initial Calibration





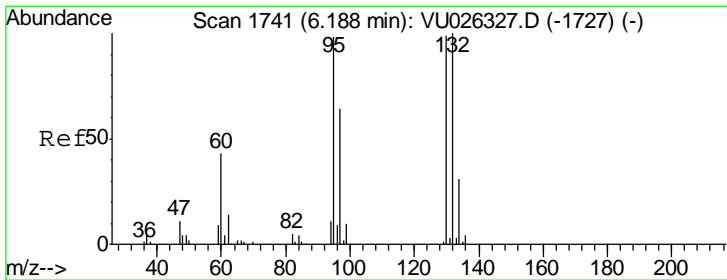
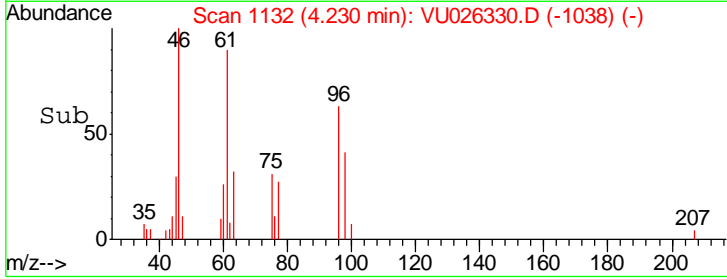
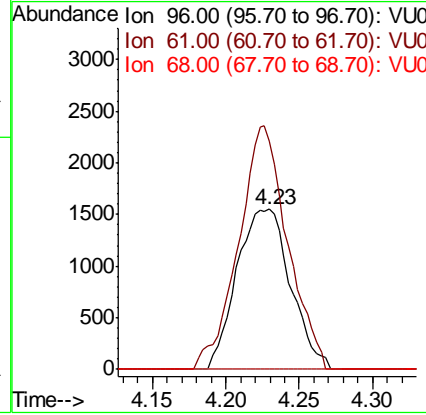
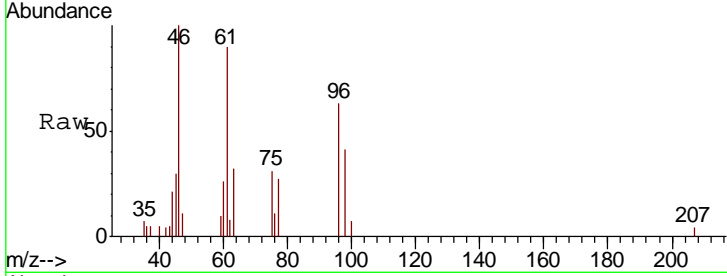
#20  
 cis-1,2-Dichloroethene  
 Concen: 1.751 ug/L m  
 RT: 4.23 min Scan# 1132  
 Delta R.T. 0.00 min  
 Lab File: VU026330.D  
 Acq: 24 Aug 2018 13:55

Instrument :  
 MSVOA\_U  
 ClientSampled :  
 E4430ME

| Tgt Ion | Resp  | Lower | Upper |
|---------|-------|-------|-------|
| 96      | 3934  |       |       |
| 61      | 143.0 | 90.3  | 167.7 |
| 68      | 0.0   | 0.0   | 0.0   |

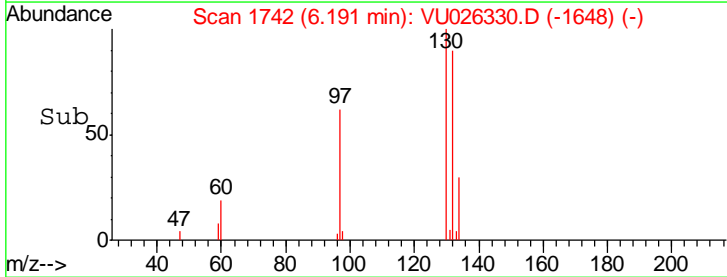
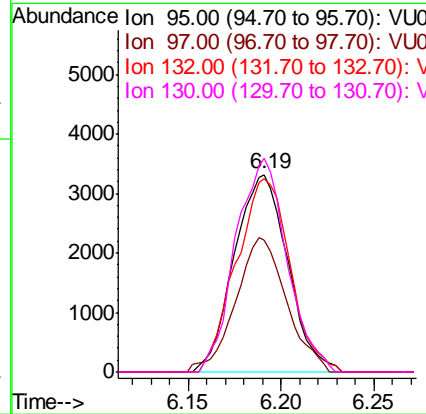
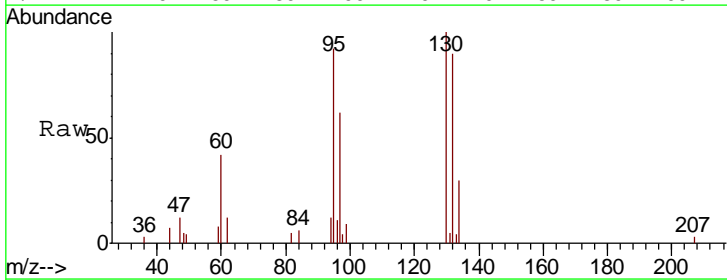
Manual Integrations  
 APPROVED

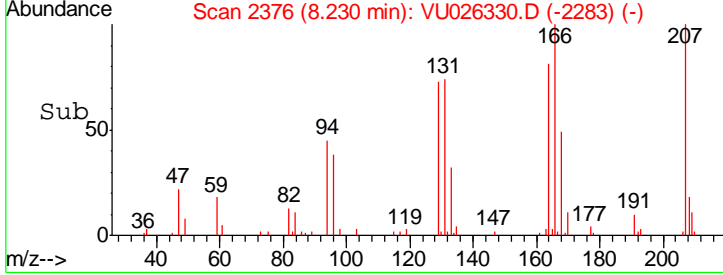
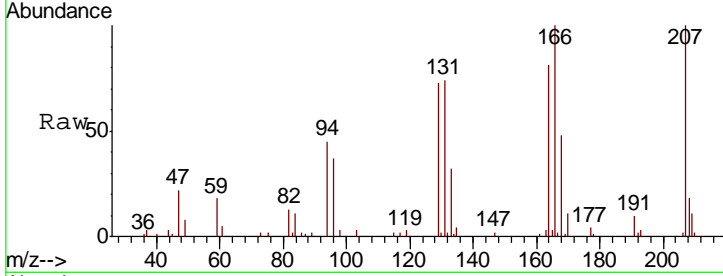
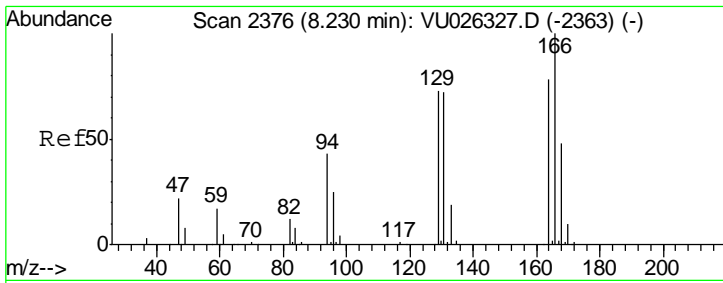
MMDadoda  
 8/25/2018 1:14:16 PM



#34  
 Trichloroethene  
 Concen: 3.017 ug/L  
 RT: 6.19 min Scan# 1742  
 Delta R.T. 0.00 min  
 Lab File: VU026330.D  
 Acq: 24 Aug 2018 13:55

| Tgt Ion | Resp  | Lower | Upper |
|---------|-------|-------|-------|
| 95      | 6637  |       |       |
| 97      | 66.6  | 47.2  | 87.6  |
| 132     | 97.7  | 70.2  | 130.4 |
| 130     | 108.1 | 73.4  | 136.4 |





#46  
 Tetrachloroethene  
 Concen: 9.017 ug/L  
 RT: 8.23 min Scan# 2376  
 Delta R.T. -0.00 min  
 Lab File: VU026330.D  
 Acq: 24 Aug 2018 13:55

Tgt Ion:164 Resp: 17066

| Ion | Ratio | Lower | Upper |
|-----|-------|-------|-------|
| 164 | 100   |       |       |
| 129 | 89.8  | 67.3  | 124.9 |
| 131 | 91.1  | 65.5  | 121.7 |
| 166 | 122.8 | 90.9  | 168.9 |

Instrument : MSVOA\_U  
 ClientSampled : E4430ME

Manual Integrations  
**APPROVED**  
 MMDadoda  
 8/25/2018 1:14:16 PM

