

Data Path : Z:\VOASRV\HPCHEM1\MSVOA_U\DATA\VU082418\
 Data File : VU026332.D
 Acq On : 24 Aug 2018 14:41
 Operator : MD/SY
 Sample : J4624-01ME
 Misc : 6.00g/5.0mL/100uL/5.0mL/MSVOA_U/MEOH
 ALS Vial : 7 Sample Multiplier: 1

Instrument :
 MSVOA_U
 ClientSampleId :
 E4427ME

Integration Parameters: LSCINT.P

Integrator: RTE
 Smoothing : OFF
 Sampling : 1
 Start Thrs: 0.2
 Stop Thrs : 0

Filtering: 5
 Min Area: 0 % of largest Peak
 Max Peaks: 100
 Peak Location: TOP

If leading or trailing edge < 100 prefer < Baseline drop else tangent >
 Peak separation: 5

Method : Z:\VOASRV\HPCHEM1\MSVOA_U\METHOD\SOMULM082218WMA.M
 Title : VOC Analysis

Signal : TIC

peak #	R.T. min	first scan	max scan	last scan	PK TY	peak height	corr. area	corr. % max.	% of total
1	0.622	4	10	13	rBV2	353	356	0.03%	0.003%
2	0.789	60	62	66	rBV2	166	95	0.01%	0.001%
3	0.831	70	75	78	rBV	251	281	0.02%	0.003%
4	0.860	82	84	87	rVB	328	124	0.01%	0.001%
5	0.886	87	92	95	rBV3	345	274	0.02%	0.003%
6	0.924	97	104	107	rVB	326	357	0.03%	0.003%
7	0.944	107	110	112	rBV3	467	258	0.02%	0.003%
8	0.963	114	116	120	rVB2	306	172	0.01%	0.002%
9	0.985	120	123	125	rBV	293	200	0.01%	0.002%
10	0.998	125	127	128	rVV	276	119	0.01%	0.001%
11	1.027	132	136	137	rBV	93	74	0.01%	0.001%
12	1.082	145	153	176	rBV	1142152	1221049	85.80%	11.954%
13	1.394	244	250	266	rVB	90416	108720	7.64%	1.064%
14	2.239	503	513	526	rVB	188696	282993	19.88%	2.770%
15	2.532	602	604	607	rBV3	741	483	0.03%	0.005%
16	3.542	915	918	920	rBV3	243	160	0.01%	0.002%
17	3.709	967	970	972	rBV	251	152	0.01%	0.001%
18	3.828	1004	1007	1009	rBV	378	223	0.02%	0.002%
19	4.001	1059	1061	1063	rBV2	226	126	0.01%	0.001%
20	4.075	1082	1084	1086	rVB	527	221	0.02%	0.002%
21	4.210	1106	1126	1165	rBV4	81705	311366	21.88%	3.048%
22	4.435	1193	1196	1198	rBV2	559	282	0.02%	0.003%
23	4.487	1209	1212	1214	rBV	391	271	0.02%	0.003%
24	4.513	1218	1220	1222	rBV2	326	146	0.01%	0.001%
25	4.648	1244	1262	1289	rBV	149508	375891	26.41%	3.680%
26	4.837	1319	1321	1328	rVB4	621	601	0.04%	0.006%
27	4.879	1328	1334	1336	rBV2	909	923	0.06%	0.009%
28	4.931	1347	1350	1351	rBV2	949	517	0.04%	0.005%
29	5.033	1379	1382	1385	rVB2	462	340	0.02%	0.003%
30	5.050	1385	1387	1390	rBV	174	134	0.01%	0.001%
31	5.078	1394	1396	1398	rVB	323	146	0.01%	0.001%
32	5.210	1433	1437	1439	rBV2	310	256	0.02%	0.003%
33	5.255	1443	1451	1453	rVV4	490	574	0.04%	0.006%
34	5.336	1453	1476	1506	rVV2	313616	916317	64.38%	8.971%

Data Path : Z:\VOASRV\HPCHEM1\MSVOA_U\DATA\VU082418\
 Data File : VU026332.D
 Acq On : 24 Aug 2018 14:41
 Operator : MD/SY
 Sample : J4624-01ME
 Misc : 6.00g/5.0mL/100uL/5.0mL/MSVOA_U/MEOH
 ALS Vial : 7 Sample Multiplier: 1

Instrument :
 MSVOA_U
 ClientSampleId :
 E4427ME

Integration Parameters: LSCINT.P

Integrator: RTE
 Smoothing : OFF
 Sampling : 1
 Start Thrs: 0.2
 Stop Thrs : 0

Filtering: 5
 Min Area: 0 % of largest Peak
 Max Peaks: 100
 Peak Location: TOP

If leading or trailing edge < 100 prefer < Baseline drop else tangent >
 Peak separation: 5

Method : Z:\VOASRV\HPCHEM1\MSVOA_U\METHOD\SOMULM082218WMA.M
 Title : VOC Analysis

35	5.490	1522	1524	1528	rVB2	503	301	0.02%	0.003%
36	5.513	1529	1531	1533	rBV	202	118	0.01%	0.001%
37	5.548	1540	1542	1543	rBV	314	101	0.01%	0.001%
38	5.744	1600	1603	1606	rBV2	383	327	0.02%	0.003%
39	5.770	1610	1611	1613	rVB2	183	69	0.00%	0.001%
40	5.808	1620	1623	1628	rVB	287	255	0.02%	0.002%
41	5.834	1628	1631	1632	rBV	211	113	0.01%	0.001%
42	5.886	1632	1647	1681	rVV	351768	732584	51.47%	7.172%
43	6.185	1728	1740	1756	rBV2	62943	127215	8.94%	1.245%
44	6.332	1772	1786	1806	rBV	195661	415372	29.19%	4.066%
45	6.445	1819	1821	1822	rBV	384	159	0.01%	0.002%
46	6.496	1835	1837	1840	rBV2	191	137	0.01%	0.001%
47	6.519	1842	1844	1847	rBV	322	234	0.02%	0.002%
48	6.577	1860	1862	1864	rVB2	351	132	0.01%	0.001%
49	6.590	1864	1866	1867	rBV2	256	101	0.01%	0.001%
50	6.664	1887	1889	1892	rVB	250	142	0.01%	0.001%
51	6.683	1892	1895	1896	rBV	448	215	0.02%	0.002%
52	6.741	1908	1913	1914	rBV2	401	293	0.02%	0.003%
53	6.805	1931	1933	1937	rVB2	474	252	0.02%	0.002%
54	6.831	1937	1941	1943	rBV2	319	301	0.02%	0.003%
55	6.882	1946	1957	1967	rBV4	2880	6309	0.44%	0.062%
56	6.947	1974	1977	1980	rVB2	326	194	0.01%	0.002%
57	7.001	1992	1994	1998	rVB2	274	122	0.01%	0.001%
58	7.024	1998	2001	2002	rBV	189	109	0.01%	0.001%
59	7.120	2028	2031	2035	rBV2	442	377	0.03%	0.004%
60	7.184	2049	2051	2053	rBV2	247	130	0.01%	0.001%
61	7.230	2053	2065	2085	rVV2	109833	212550	14.93%	2.081%
62	7.361	2104	2106	2108	rBV2	308	180	0.01%	0.002%
63	7.439	2127	2130	2132	rBV2	308	203	0.01%	0.002%
64	7.474	2139	2141	2144	rBV2	425	302	0.02%	0.003%
65	7.567	2156	2170	2193	rBV	395771	718253	50.47%	7.032%
66	7.815	2243	2247	2248	rBV2	366	282	0.02%	0.003%
67	7.853	2248	2259	2281	rVB2	76258	150708	10.59%	1.475%
68	8.229	2349	2376	2395	rBV2	658577	1423205	100.00%	13.933%
69	8.615	2492	2496	2497	rBV2	800	531	0.04%	0.005%
70	8.628	2498	2500	2505	rVB3	1203	1052	0.07%	0.010%
71	8.705	2520	2524	2525	rBV	255	206	0.01%	0.002%

Data Path : Z:\VOASRV\HPCHEM1\MSVOA_U\DATA\VU082418\
 Data File : VU026332.D
 Acq On : 24 Aug 2018 14:41
 Operator : MD/SY
 Sample : J4624-01ME
 Misc : 6.00g/5.0mL/100uL/5.0mL/MSVOA_U/MEOH
 ALS Vial : 7 Sample Multiplier: 1

Instrument :
 MSVOA_U
 ClientSampleId :
 E4427ME

Integration Parameters: LSCINT.P

Integrator: RTE
 Smoothing : OFF Filtering: 5
 Sampling : 1 Min Area: 0 % of largest Peak
 Start Thrs: 0.2 Max Peaks: 100
 Stop Thrs : 0 Peak Location: TOP

If leading or trailing edge < 100 prefer < Baseline drop else tangent >
 Peak separation: 5

Method : Z:\VOASRV\HPCHEM1\MSVOA_U\METHOD\SOMULM082218WMA.M
 Title : VOC Analysis

72	8.934	2591	2595	2596	rBV3	421	330	0.02%	0.003%
73	9.094	2625	2645	2668	rBV	536745	923287	64.87%	9.039%
74	9.496	2768	2770	2771	rBV	274	122	0.01%	0.001%
75	9.664	2820	2822	2826	rBV2	283	193	0.01%	0.002%
76	9.702	2831	2834	2835	rBV2	307	181	0.01%	0.002%
77	9.953	2909	2912	2913	rBV3	1447	900	0.06%	0.009%
78	10.072	2946	2949	2951	rBV	265	142	0.01%	0.001%
79	10.438	3050	3063	3081	rBV	327244	516141	36.27%	5.053%
80	10.615	3108	3118	3132	rVB2	26188	49423	3.47%	0.484%
81	11.487	3377	3389	3414	rBV	596400	935428	65.73%	9.158%
82	11.757	3471	3473	3475	rBV	411	197	0.01%	0.002%
83	11.863	3494	3506	3526	rBV	485407	769774	54.09%	7.536%
84	12.094	3575	3578	3581	rBV3	763	643	0.05%	0.006%
85	12.294	3636	3640	3644	rBV3	588	628	0.04%	0.006%

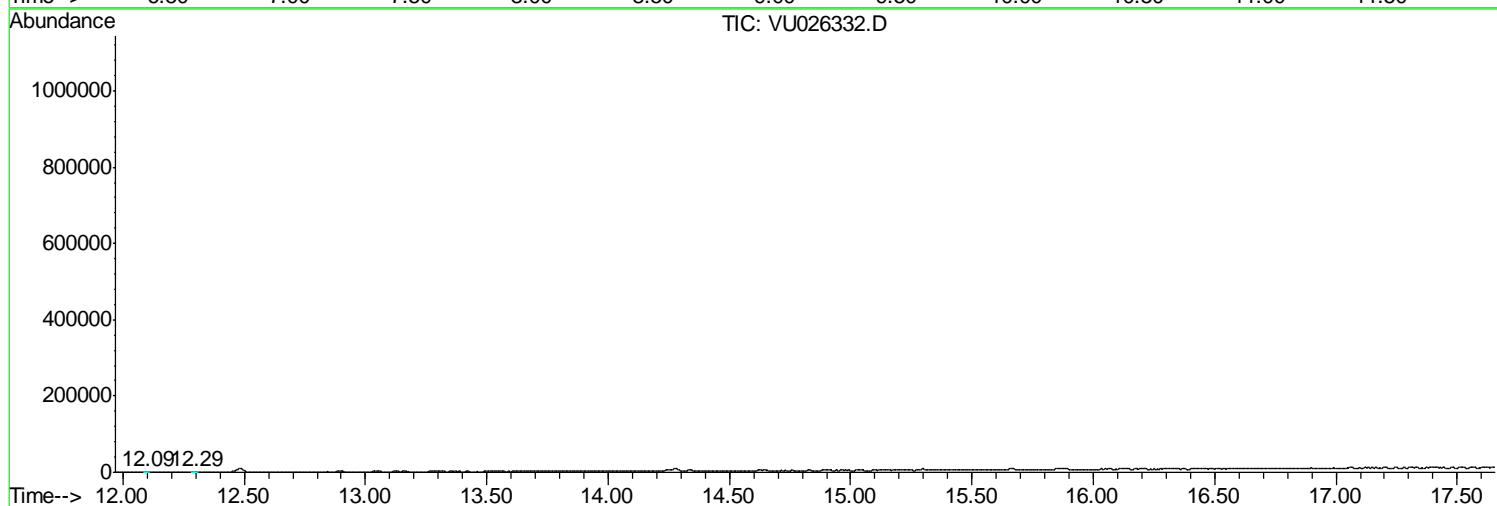
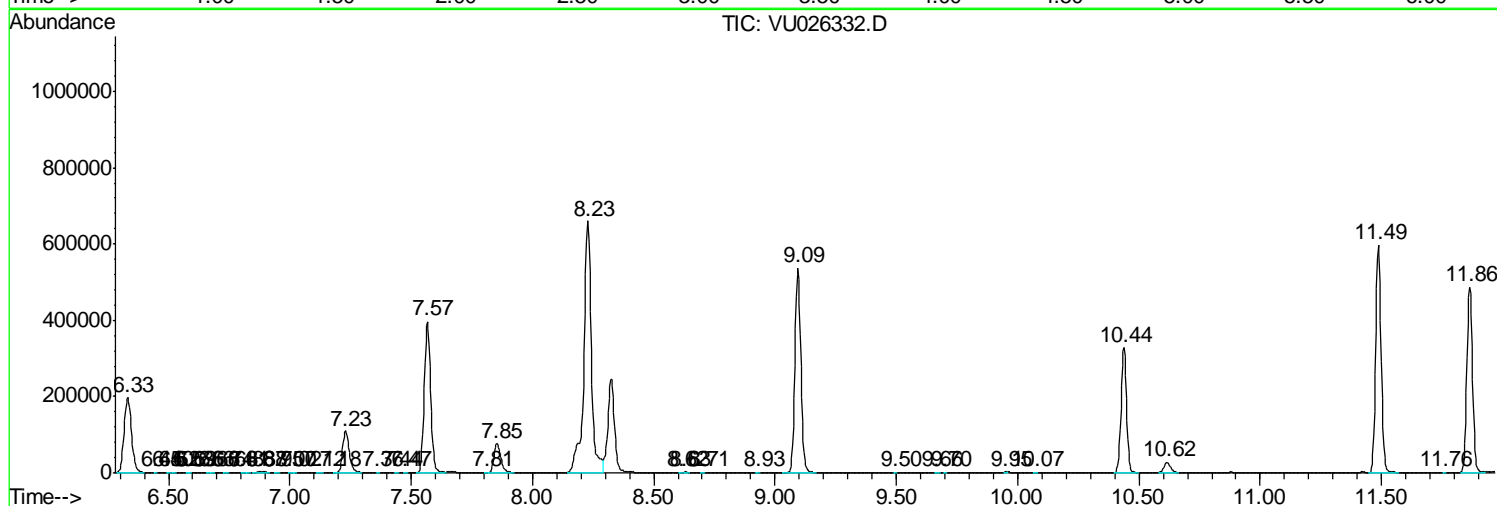
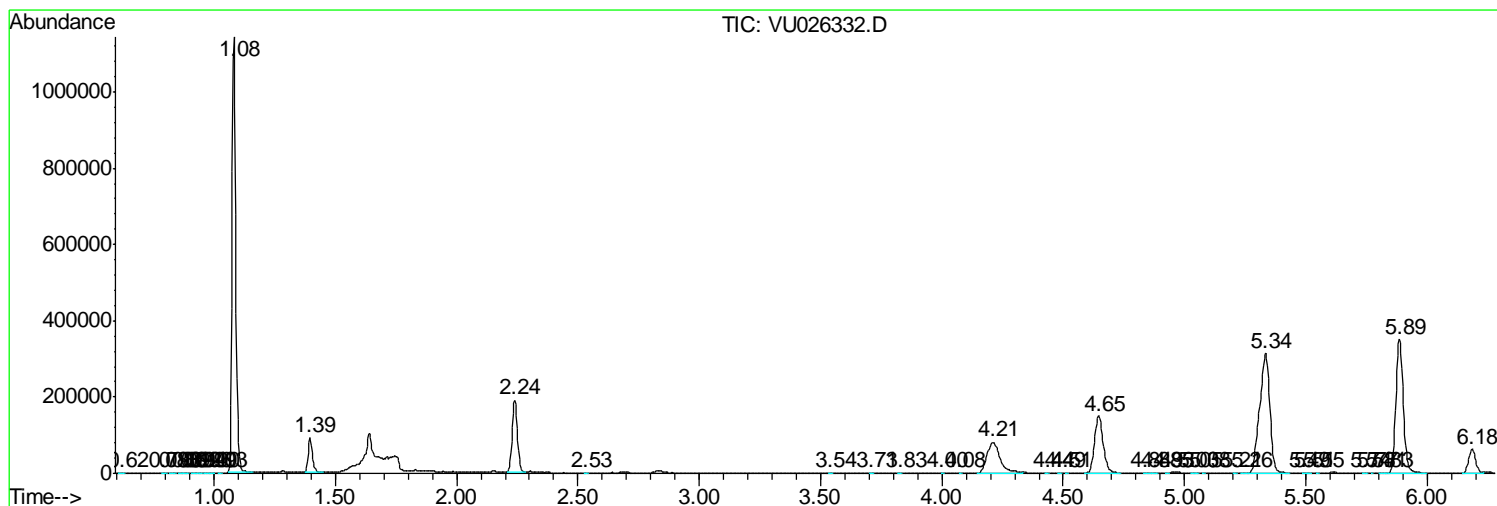
Sum of corrected areas: 10214724

Data Path : Z:\VOASRV\HPCHEM1\MSVOA_U\DATA\VU082418\
 Data File : VU026332.D
 Acq On : 24 Aug 2018 14:41
 Operator : MD/SY
 Sample : J4624-01ME
 Misc : 6.00g/5.0mL/100uL/5.0mL/MSVOA_U/MEOH
 ALS Vial : 7 Sample Multiplier: 1

Instrument :
 MSVOA_U
 ClientSampleId :
 E4427ME

Quant Method : Z:\VOASRV\HPCHEM1\MSVOA_U\METHOD\SOMULM082218WMA.M
 Quant Title : VOC Analysis

TIC Library : C:\DATABASE\NIST11.L
 TIC Integration Parameters: LSCINT.P



Data Path : Z:\VOASRV\HPCHEM1\MSVOA_U\DATA\VU082418\
Data File : VU026332.D
Acq On : 24 Aug 2018 14:41
Operator : MD/SY
Sample : J4624-01ME
Misc : 6.00g/5.0mL/100uL/5.0mL/MSVOA_U/MEOH
ALS Vial : 7 Sample Multiplier: 1

Instrument :
MSVOA_U
ClientSampleId :
E4427ME

Quant Method : Z:\VOASRV\HPCHEM1\MSVOA_U\METHOD\SOMULM082218WMA.M
Quant Title : VOC Analysis

TIC Library : C:\DATABASE\NIST11.L
TIC Integration Parameters: LSCINT.P

No Library Search Compounds Detected

Data Path : Z:\VOASRV\HPCHEM1\MSVOA_U\DATA\VU082418\
Data File : VU026332.D
Acq On : 24 Aug 2018 14:41
Operator : MD/SY
Sample : J4624-01ME
Misc : 6.00g/5.0mL/100uL/5.0mL/MSVOA_U/MEOH
ALS Vial : 7 Sample Multiplier: 1

Instrument :
MSVOA_U
ClientSampleId :
E4427ME

Quant Method : Z:\VOASRV\HPCHEM1\MSVOA_U\METHOD\SOMULM082218WMA.M
Quant Title : VOC Analysis

TIC Library : C:\DATABASE\NIST11.L
TIC Integration Parameters: LSCINT.P

TIC Top Hit name	RT	EstConc	Units	Response	--Internal Standard--			
					#	RT	Resp	Conc
