

Data Path : Z:\VOASRV\HPCHEM1\MSVOA U\DATA\VU082819\  
 Data File : VU034006.D  
 Acq On : 28 Aug 2019 05:51  
 Operator : JC/SP  
 Sample : K4516-39  
 Misc : 5.0mL/MSVOA U/WATER  
 ALS Vial : 41 Sample Multiplier: 1

Instrument :  
 MSVOA\_U  
 ClientSampleId :  
 T2-S-D-(2.5)

Quant Time: Aug 28 08:45:29 2019  
 Quant Method : Z:\VOASRV\HPCHEM1\MSVOA\_U\METHOD\82U082819W.M  
 Quant Title : SW846 8260  
 QLast Update : Wed Aug 28 02:42:03 2019  
 Response via : Initial Calibration

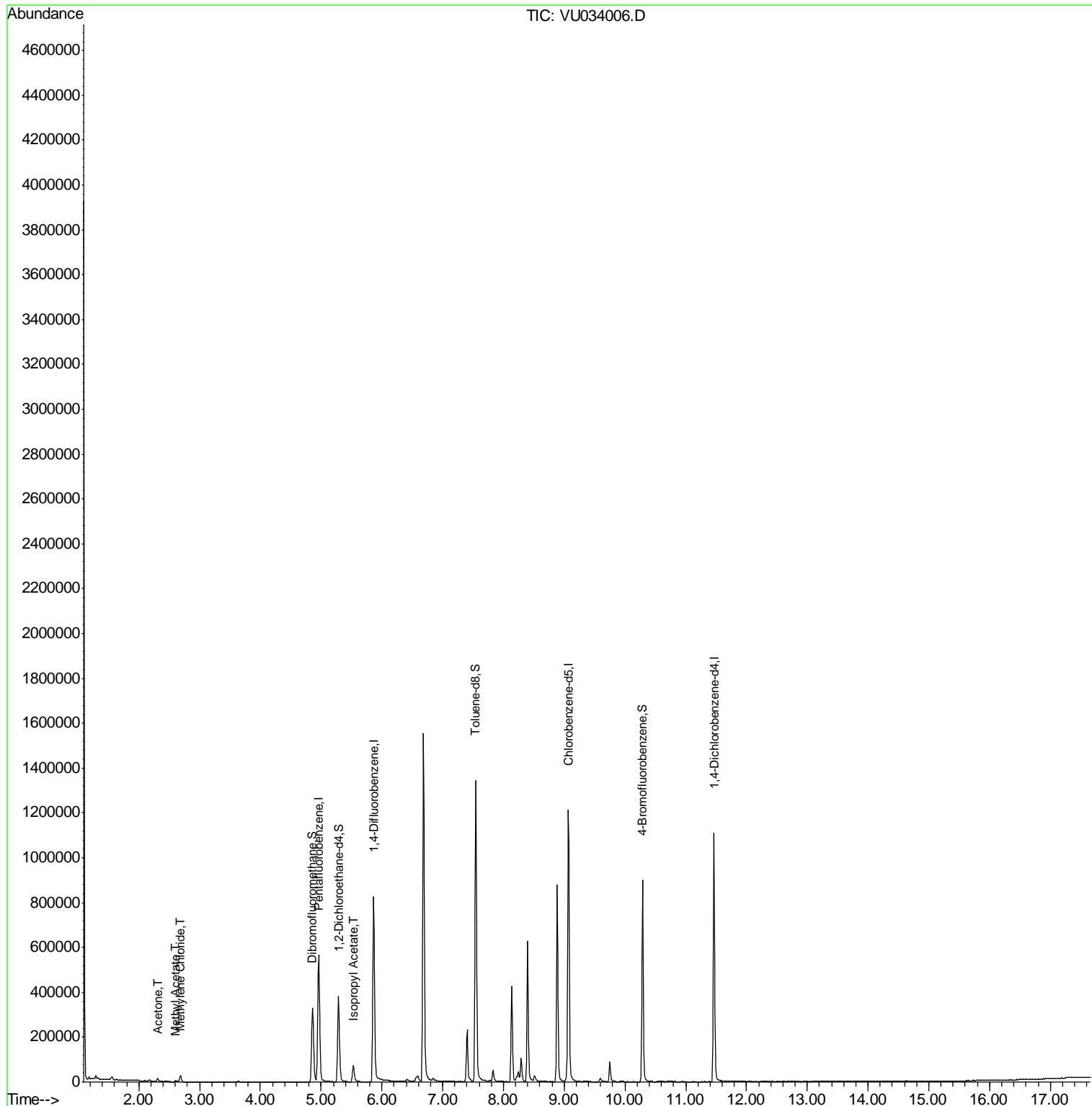
| Internal Standards          | R.T.   | QIon | Response | Conc  | Units   | Dev(Min) |
|-----------------------------|--------|------|----------|-------|---------|----------|
| 1) Pentafluorobenzene       | 4.96   | 168  | 437752   | 50.00 | ug/l    | 0.00     |
| 34) 1,4-Difluorobenzene     | 5.86   | 114  | 695766   | 50.00 | ug/l    | 0.00     |
| 63) Chlorobenzene-d5        | 9.07   | 117  | 677880   | 50.00 | ug/l    | 0.00     |
| 72) 1,4-Dichlorobenzene-d4  | 11.47  | 152  | 296264   | 50.00 | ug/l    | 0.00     |
| System Monitoring Compounds |        |      |          |       |         |          |
| 33) 1,2-Dichloroethane-d4   | 5.29   | 65   | 299249   | 61.53 | ug/l    | 0.00     |
| Spiked Amount               | 50.000 |      | Recovery | =     | 123.06% |          |
| 35) Dibromofluoromethane    | 4.86   | 113  | 235605   | 50.38 | ug/l    | 0.00     |
| Spiked Amount               | 50.000 |      | Recovery | =     | 100.76% |          |
| 50) Toluene-d8              | 7.55   | 98   | 914852   | 53.03 | ug/l    | 0.00     |
| Spiked Amount               | 50.000 |      | Recovery | =     | 106.06% |          |
| 62) 4-Bromofluorobenzene    | 10.29  | 95   | 299989   | 45.33 | ug/l    | 0.00     |
| Spiked Amount               | 50.000 |      | Recovery | =     | 90.66%  |          |
| Target Compounds            |        |      |          |       |         |          |
| 16) Acetone                 | 2.31   | 43   | 12606    | 5.415 | ug/l    | 100      |
| 18) Methyl Acetate          | 2.60   | 43   | 7594     | 1.324 | ug/l    | 90       |
| 20) Methylene Chloride      | 2.68   | 84   | 11566    | 2.342 | ug/l    | 89       |
| 43) Isopropyl Acetate       | 5.53   | 43   | 87573    | 8.936 | ug/l    | 94       |

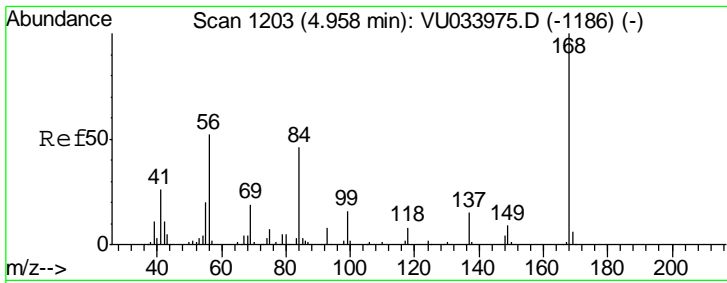
(#) = qualifier out of range (m) = manual integration (+) = signals summed

Data Path : Z:\VOASRV\HPCHEM1\MSVOA U\DATA\VU082819\  
 Data File : VU034006.D  
 Acq On : 28 Aug 2019 05:51  
 Operator : JC/SP  
 Sample : K4516-39  
 Misc : 5.0mL/MSVOA U/WATER  
 ALS Vial : 41 Sample Multiplier: 1

Instrument :  
 MSVOA\_U  
 ClientSampleId :  
 T2-S-D-(2.5)

Quant Time: Aug 28 08:45:29 2019  
 Quant Method : Z:\VOASRV\HPCHEM1\MSVOA\_U\METHOD\82U082819W.M  
 Quant Title : SW846 8260  
 QLast Update : Wed Aug 28 02:42:03 2019  
 Response via : Initial Calibration

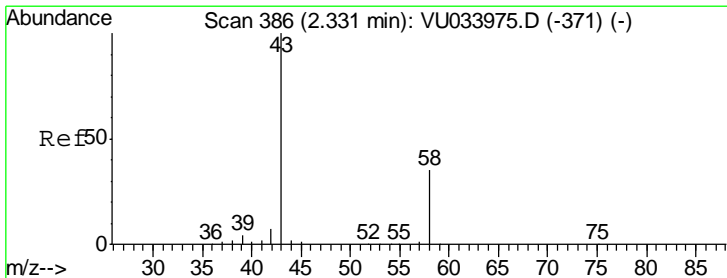
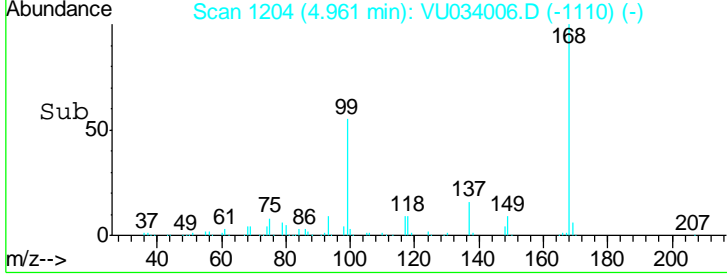
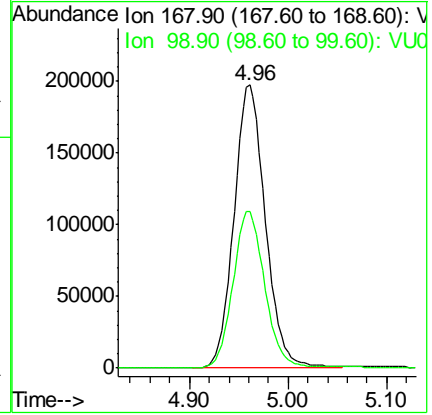
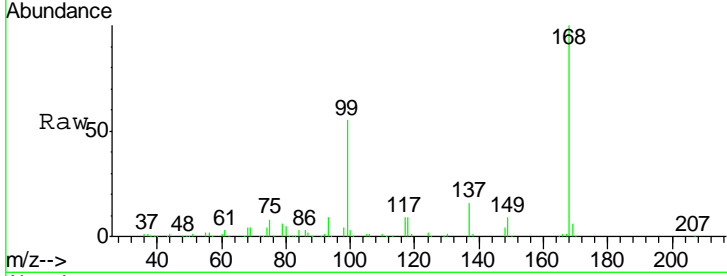




#1  
 Pentafluorobenzene  
 Concen: 50.000 ug/l  
 RT: 4.96 min Scan# 1204  
 Delta R.T. 0.00 min  
 Lab File: VU034006.D  
 Acq: 28 Aug 2019 05:51

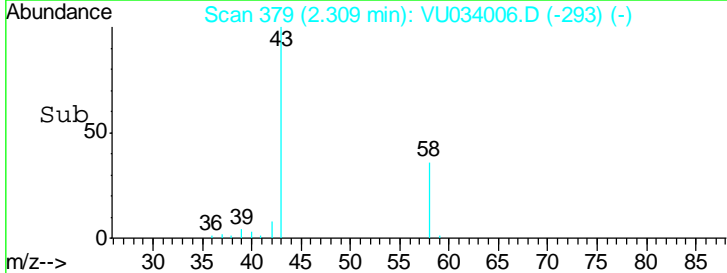
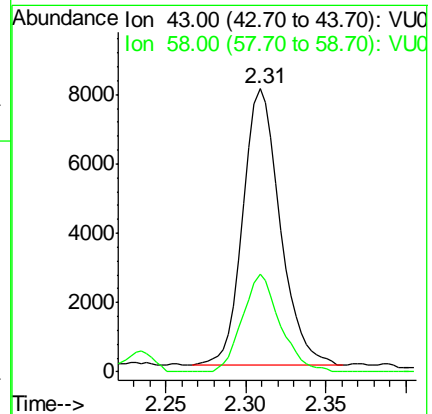
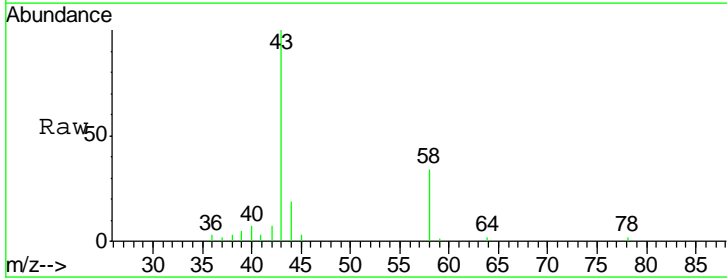
Instrument : MSVOA\_U  
 ClientSampled : T2-S-D-(2.5)

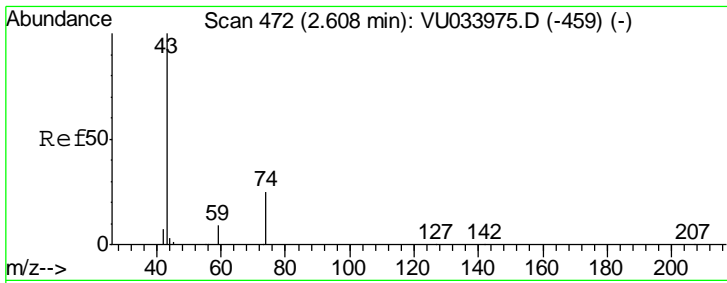
| Tgt Ion | Resp | Lower | Upper |
|---------|------|-------|-------|
| 168     | 100  |       |       |
| 99      | 55.2 | 39.4  | 59.2  |



#16  
 Acetone  
 Concen: 5.415 ug/l  
 RT: 2.31 min Scan# 379  
 Delta R.T. -0.02 min  
 Lab File: VU034006.D  
 Acq: 28 Aug 2019 05:51

| Tgt Ion | Resp | Lower | Upper |
|---------|------|-------|-------|
| 43      | 100  |       |       |
| 58      | 35.2 | 28.0  | 42.0  |

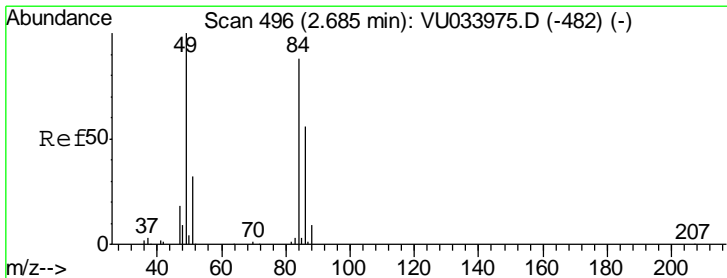
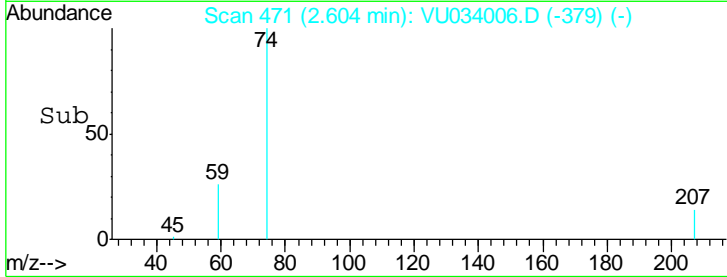
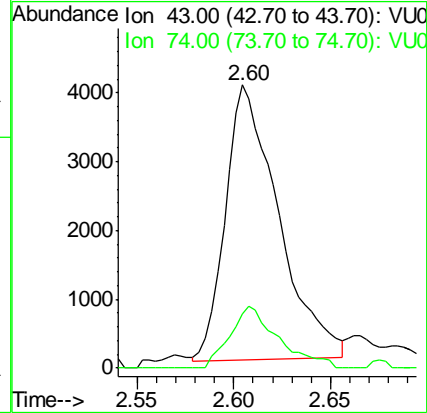
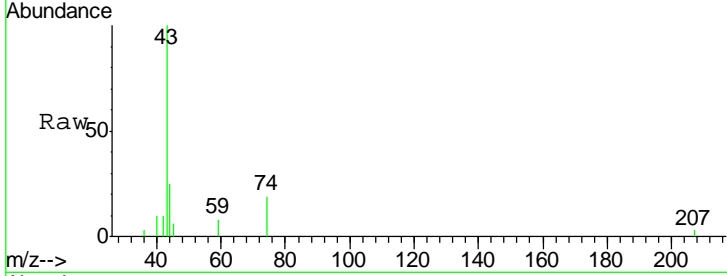




#18  
 Methyl Acetate  
 Concen: 1.324 ug/l  
 RT: 2.60 min Scan# 471  
 Delta R.T. -0.00 min  
 Lab File: VU034006.D  
 Acq: 28 Aug 2019 05:51

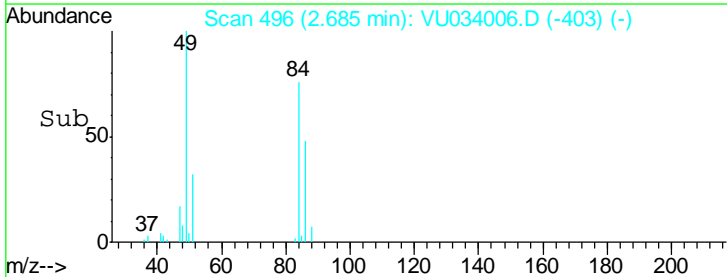
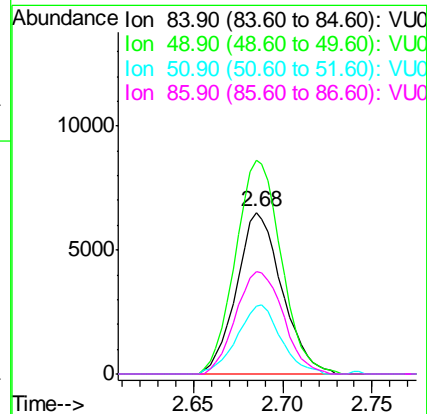
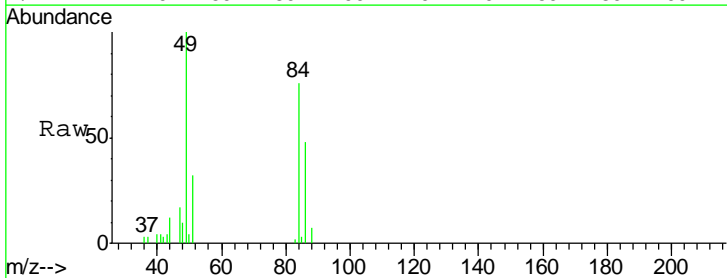
Instrument :  
 MSVOA\_U  
 ClientSampled :  
 T2-S-D-(2.5)

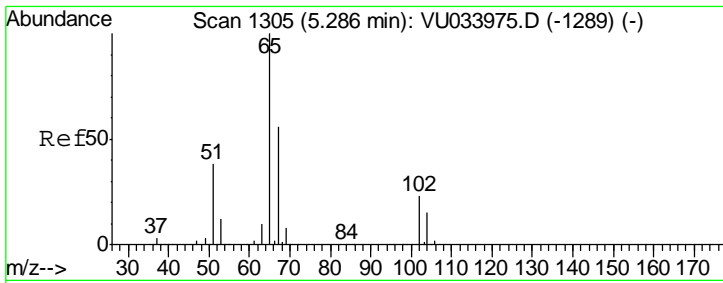
| Tgt Ion | Resp | Lower | Upper |
|---------|------|-------|-------|
| 43      | 100  |       |       |
| 74      | 20.6 | 20.5  | 30.7  |



#20  
 Methylene Chloride  
 Concen: 2.342 ug/l  
 RT: 2.68 min Scan# 496  
 Delta R.T. 0.00 min  
 Lab File: VU034006.D  
 Acq: 28 Aug 2019 05:51

| Tgt Ion | Resp  | Lower | Upper |
|---------|-------|-------|-------|
| 84      | 100   |       |       |
| 49      | 132.2 | 91.3  | 136.9 |
| 51      | 42.0  | 28.9  | 43.3  |
| 86      | 63.2  | 50.9  | 76.3  |

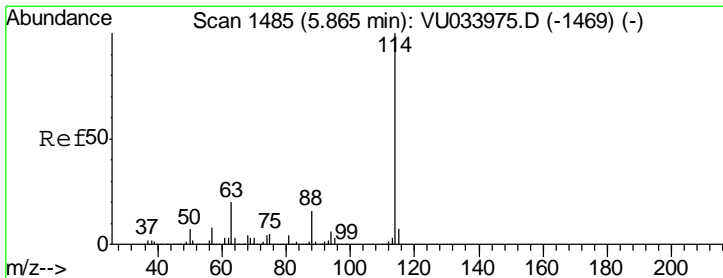
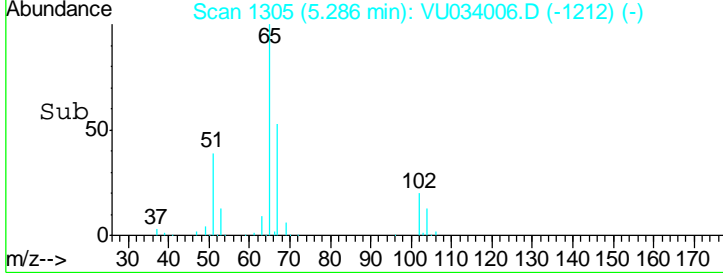
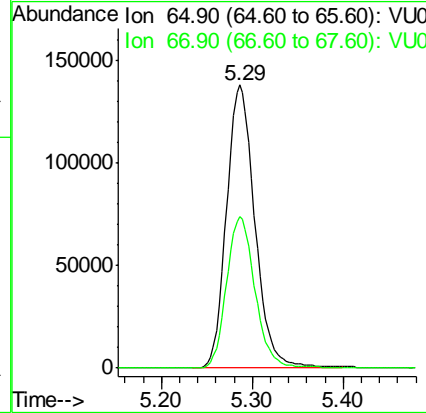
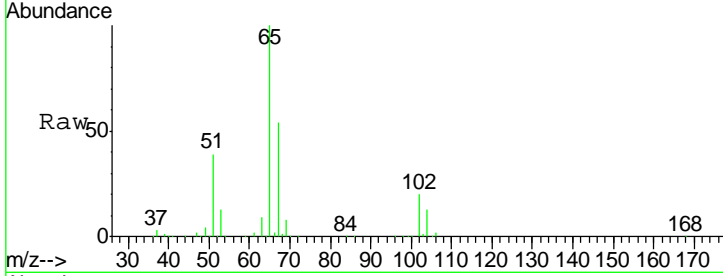




#33  
 1,2-Dichloroethane-d4  
 Concen: 61.533 ug/l  
 RT: 5.29 min Scan# 1305  
 Delta R.T. 0.00 min  
 Lab File: VU034006.D  
 Acq: 28 Aug 2019 05:51

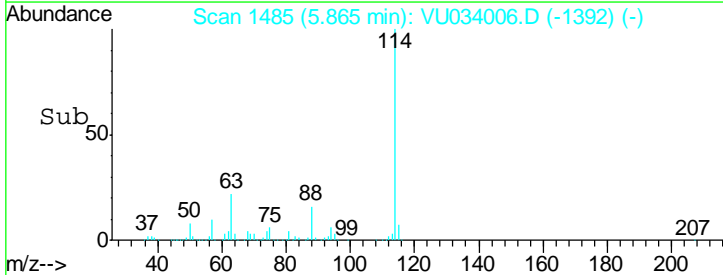
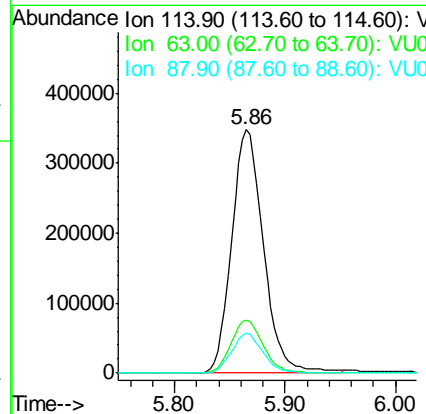
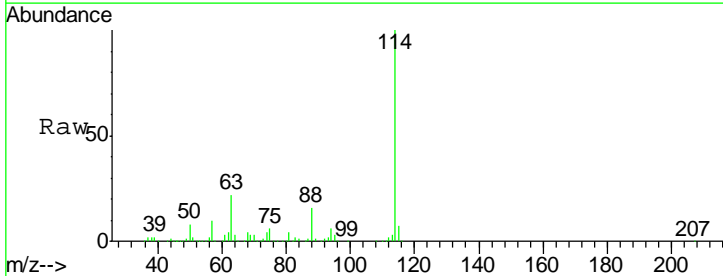
**Instrument :**  
 MSVOA\_U  
**ClientSampled :**  
 T2-S-D-(2.5)

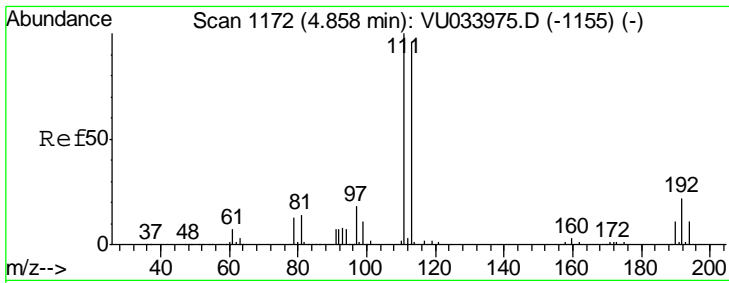
| Tgt Ion | Resp | Lower | Upper |
|---------|------|-------|-------|
| 65      | 100  |       |       |
| 67      | 53.2 | 0.0   | 111.0 |



#34  
 1,4-Difluorobenzene  
 Concen: 50.000 ug/l  
 RT: 5.86 min Scan# 1485  
 Delta R.T. 0.00 min  
 Lab File: VU034006.D  
 Acq: 28 Aug 2019 05:51

| Tgt Ion | Resp | Lower | Upper |
|---------|------|-------|-------|
| 114     | 100  |       |       |
| 63      | 21.9 | 0.0   | 39.0  |
| 88      | 16.2 | 0.0   | 31.2  |

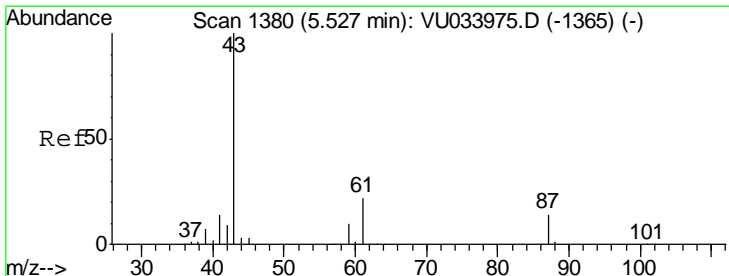
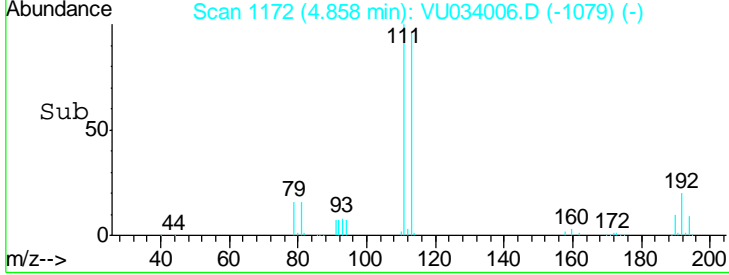
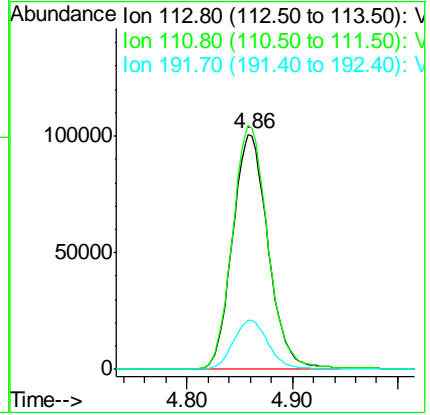
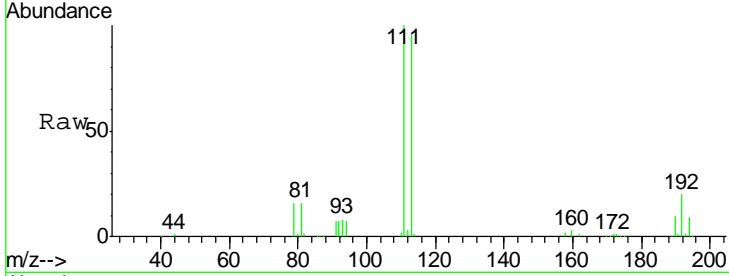




#35  
 Dibromofluoromethane  
 Concen: 50.376 ug/l  
 RT: 4.86 min Scan# 1172  
 Delta R.T. 0.00 min  
 Lab File: VU034006.D  
 Acq: 28 Aug 2019 05:51

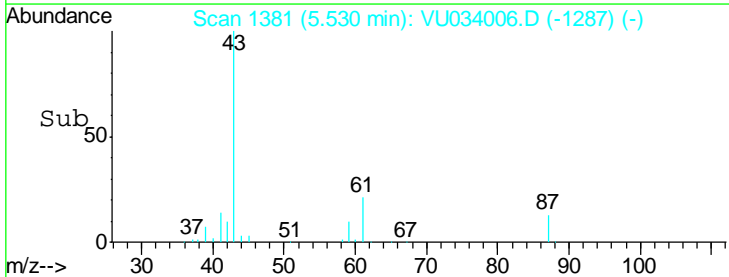
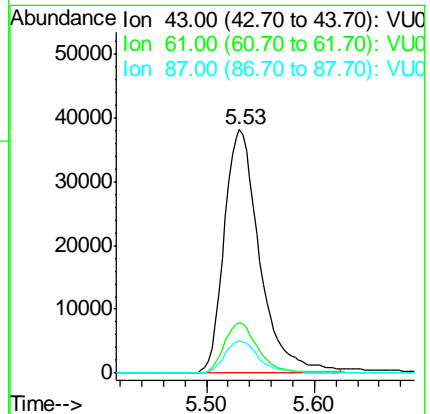
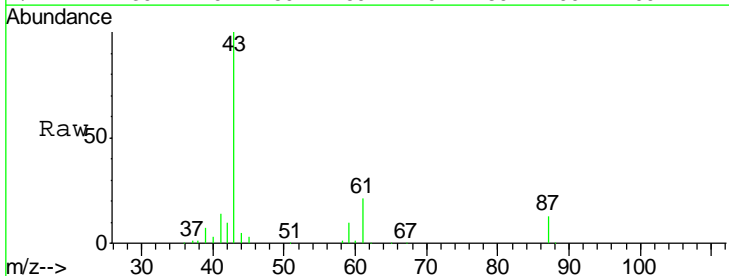
**Instrument :**  
 MSVOA\_U  
**ClientSampled :**  
 T2-S-D-(2.5)

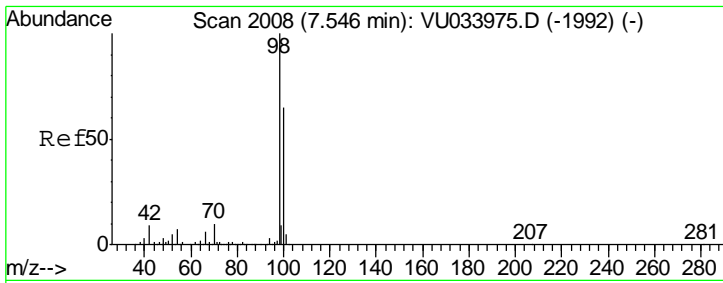
| Tgt Ion | Resp  | Lower | Upper |
|---------|-------|-------|-------|
| 113     | 100   |       |       |
| 111     | 103.1 | 81.7  | 122.5 |
| 192     | 20.5  | 18.6  | 27.8  |



#43  
 Isopropyl Acetate  
 Concen: 8.936 ug/l  
 RT: 5.53 min Scan# 1381  
 Delta R.T. 0.00 min  
 Lab File: VU034006.D  
 Acq: 28 Aug 2019 05:51

| Tgt Ion | Resp | Lower | Upper |
|---------|------|-------|-------|
| 43      | 100  |       |       |
| 61      | 19.4 | 17.8  | 26.8  |
| 87      | 12.5 | 11.9  | 17.9  |

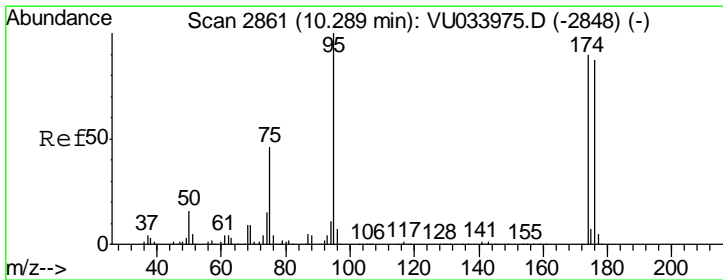
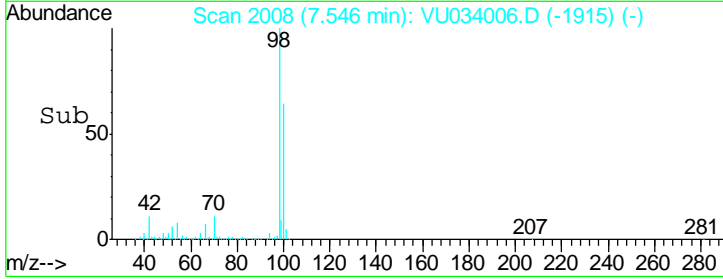
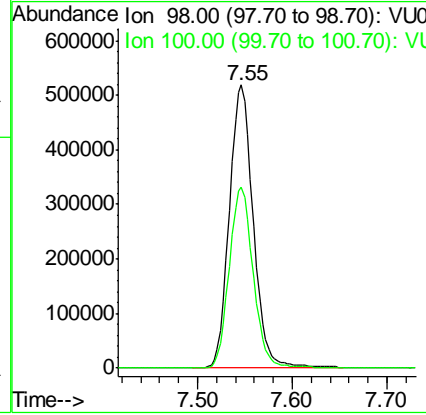
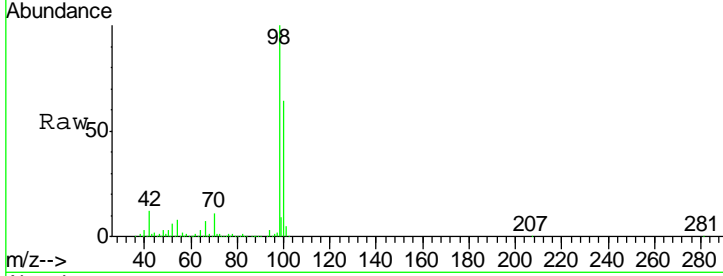




#50  
 Toluene-d8  
 Concen: 53.033 ug/l  
 RT: 7.55 min Scan# 2008  
 Delta R.T. 0.00 min  
 Lab File: VU034006.D  
 Acq: 28 Aug 2019 05:51

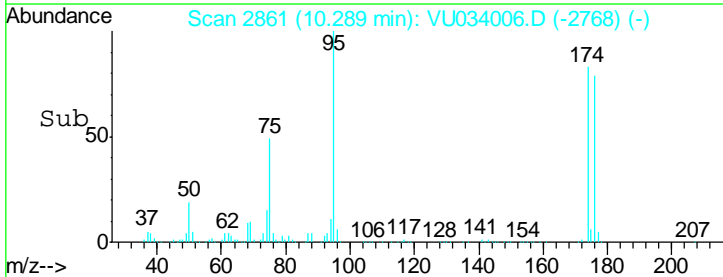
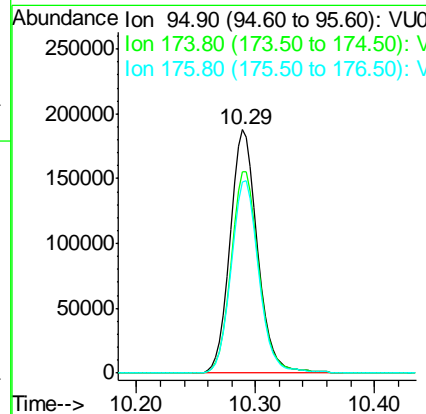
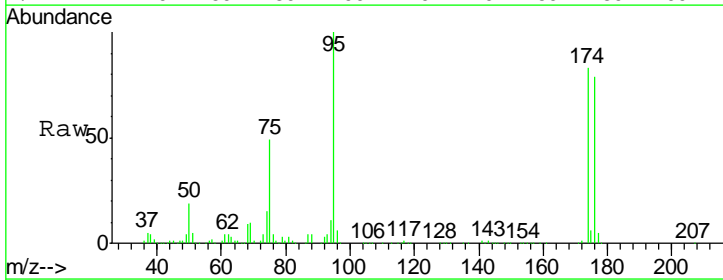
**Instrument :**  
 MSVOA\_U  
**ClientSampled :**  
 T2-S-D-(2.5)

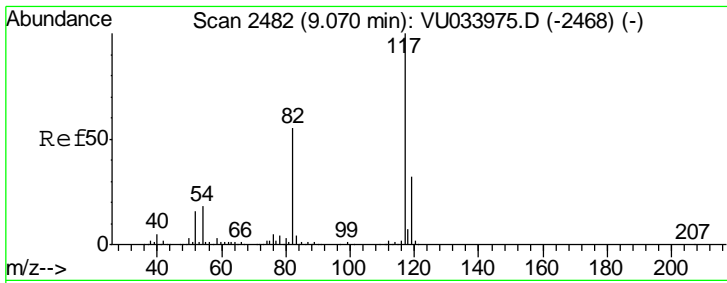
| Tgt Ion | Resp   | Lower | Upper |
|---------|--------|-------|-------|
| 98      | 914852 |       |       |
| 100     | 64.3   | 51.5  | 77.3  |



#62  
 4-Bromofluorobenzene  
 Concen: 45.334 ug/l  
 RT: 10.29 min Scan# 2861  
 Delta R.T. 0.00 min  
 Lab File: VU034006.D  
 Acq: 28 Aug 2019 05:51

| Tgt Ion | Resp   | Lower | Upper |
|---------|--------|-------|-------|
| 95      | 299989 |       |       |
| 174     | 84.0   | 0.0   | 183.8 |
| 176     | 79.7   | 0.0   | 176.4 |

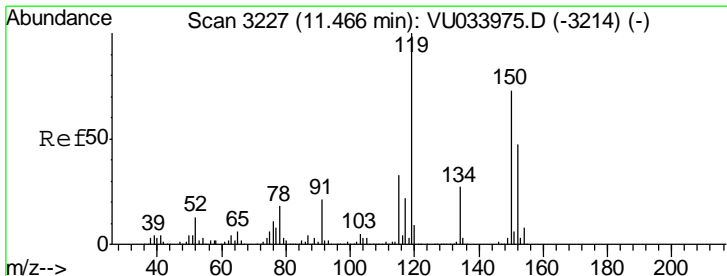
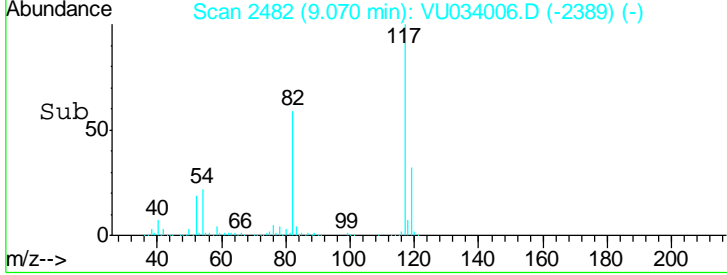
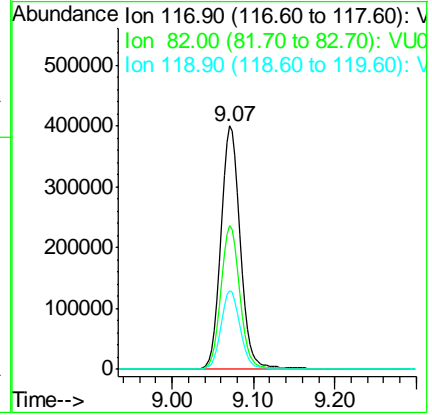
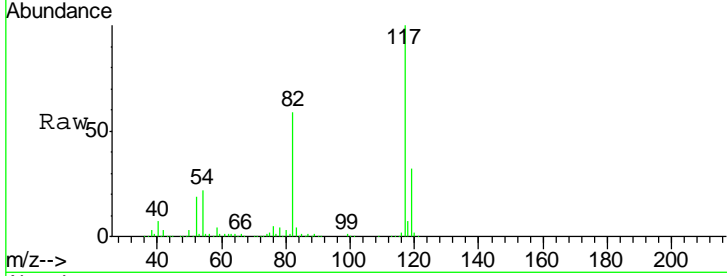




#63  
 Chlorobenzene-d5  
 Concen: 50.000 ug/l  
 RT: 9.07 min Scan# 2482  
 Delta R.T. 0.00 min  
 Lab File: VU034006.D  
 Acq: 28 Aug 2019 05:51

**Instrument :**  
 MSVOA\_U  
**ClientSampled :**  
 T2-S-D-(2.5)

| Tgt Ion | Resp   | Lower | Upper |
|---------|--------|-------|-------|
| 117     | 677880 |       |       |
| 82      | 59.0   | 43.8  | 65.8  |
| 119     | 32.5   | 25.7  | 38.5  |



#72  
 1,4-Dichlorobenzene-d4  
 Concen: 50.000 ug/l  
 RT: 11.47 min Scan# 3227  
 Delta R.T. 0.00 min  
 Lab File: VU034006.D  
 Acq: 28 Aug 2019 05:51

| Tgt Ion | Resp   | Lower | Upper |
|---------|--------|-------|-------|
| 152     | 296264 |       |       |
| 115     | 58.5   | 38.6  | 115.7 |
| 150     | 155.6  | 0.0   | 343.8 |

