

Data Path : Z:\voasrv\HPCHEM1\MSVOA_U\Data\VU082922\
 Data File : VU050491.D
 Acq On : 29 Aug 2022 17:56
 Operator : SY/MD
 Sample : N4319-03
 Misc : 5.0mL/MSVOA_U/WATER
 ALS Vial : 20 Sample Multiplier: 1

Instrument :
 MSVOA_U
 ClientSampleId :
 VHBLK001

Integration Parameters: LSCINT.P
 Integrator: RTE
 Smoothing : OFF
 Sampling : 1
 Start Thrs : 0.2
 Stop Thrs : 0
 Filtering: 5
 Min Area: 0 % of largest Peak
 Max Peaks: 100
 Peak Location: TOP

If leading or trailing edge < 100 prefer < Baseline drop else tangent >
 Peak separation: 5

Method : Z:\voasrv\HPCHEM1\MSVOA_U\Method\SFAMULM082422WMA.M
 Title : VOC Analysis

Signal : TIC: VU050491.D\data.ms

peak #	R.T. min	first scan	max scan	last scan	PK TY	peak height	corr. area	corr. % max.	% of total
1	1.488	41	46	51	rBV2	2611	2947	0.19%	0.028%
2	1.597	72	80	102	rBV	174934	217515	14.26%	2.053%
3	1.903	167	175	190	rVB	156138	206560	13.54%	1.949%
4	2.562	367	380	397	rBV	280101	448764	29.42%	4.235%
5	2.739	432	435	440	rBV3	246	281	0.02%	0.003%
6	2.787	445	450	456	rVV2	667	618	0.04%	0.006%
7	2.896	482	484	487	rVB2	290	167	0.01%	0.002%
8	3.044	519	530	543	rVV3	6743	12447	0.82%	0.117%
9	3.183	560	573	590	rBV2	5021	11729	0.77%	0.111%
10	3.356	625	627	633	rVB2	258	199	0.01%	0.002%
11	3.437	650	652	659	rVB	345	266	0.02%	0.003%
12	3.469	659	662	669	rBV	232	347	0.02%	0.003%
13	3.584	691	698	701	rBV	261	331	0.02%	0.003%
14	3.919	797	802	809	rVB2	224	215	0.01%	0.002%
15	4.234	896	900	906	rBV2	252	295	0.02%	0.003%
16	4.311	921	924	930	rVB2	312	277	0.02%	0.003%
17	4.343	930	934	936	rBV	244	193	0.01%	0.002%
18	4.372	936	943	947	rVB2	229	253	0.02%	0.002%
19	4.469	970	973	977	rVV2	322	235	0.02%	0.002%
20	4.629	1008	1023	1067	rBV	160727	441128	28.92%	4.163%
21	5.064	1140	1158	1185	rBV	278277	608955	39.93%	5.747%
22	5.199	1197	1200	1203	rVB2	338	165	0.01%	0.002%
23	5.295	1217	1230	1240	rVB5	1351	3154	0.21%	0.030%
24	5.369	1247	1253	1255	rBV2	718	777	0.05%	0.007%
25	5.453	1276	1279	1282	rBV	283	230	0.02%	0.002%
26	5.514	1293	1298	1304	rVB2	176	200	0.01%	0.002%
27	5.726	1342	1364	1398	rVV2	560077	1525228	100.00%	14.393%
28	5.842	1398	1400	1404	rVB3	451	340	0.02%	0.003%
29	5.977	1440	1442	1446	rVB2	392	235	0.02%	0.002%
30	5.996	1446	1448	1451	rBV2	222	168	0.01%	0.002%
31	6.044	1459	1463	1466	rBV	370	336	0.02%	0.003%
32	6.115	1482	1485	1487	rBV	522	404	0.03%	0.004%
33	6.250	1510	1527	1558	rBV	371490	715621	46.92%	6.753%
34	6.375	1564	1566	1569	rBV3	351	209	0.01%	0.002%
35	6.469	1591	1595	1600	rBV4	421	481	0.03%	0.005%
36	6.530	1607	1614	1622	rBV5	1724	2477	0.16%	0.023%

Data Path : Z:\voasrv\HPCHEM1\MSVOA_U\Data\VU082922\
 Data File : VU050491.D
 Acq On : 29 Aug 2022 17:56
 Operator : SY/MD
 Sample : N4319-03
 Misc : 5.0mL/MSVOA_U/WATER
 ALS Vial : 20 Sample Multiplier: 1

Instrument :
 MSVOA_U
 ClientSampleId :
 VHBLK001

Integration Parameters: LSCINT.P

Integrator: RTE
 Smoothing : OFF
 Sampling : 1
 Start Thrs : 0.2
 Stop Thrs : 0

Filtering: 5
 Min Area: 0 % of largest Peak
 Max Peaks: 100
 Peak Location: TOP

If leading or trailing edge < 100 prefer < Baseline drop else tangent >
 Peak separation: 5

Method : Z:\voasrv\HPCHEM1\MSVOA_U\Method\SFAMULM082422WMA.M
 Title : VOC Analysis

37	6.690	1649	1664	1689	rBV	365045	708659	46.46%	6.688%
38	6.813	1694	1702	1706	rVV4	817	1055	0.07%	0.010%
39	7.179	1811	1816	1819	rBV2	534	559	0.04%	0.005%
40	7.353	1866	1870	1874	rVB2	209	183	0.01%	0.002%
41	7.420	1884	1891	1894	rBV2	223	276	0.02%	0.003%
42	7.465	1899	1905	1908	rBV	328	264	0.02%	0.002%
43	7.565	1924	1936	1960	rBV	166094	299109	19.61%	2.823%
44	7.729	1985	1987	1991	rVB2	367	220	0.01%	0.002%
45	7.793	2005	2007	2016	rVB3	434	438	0.03%	0.004%
46	7.899	2025	2040	2067	rBV	602659	1050284	68.86%	9.911%
47	8.179	2115	2127	2147	rBV	114285	198450	13.01%	1.873%
48	8.485	2219	2222	2227	rVB2	424	354	0.02%	0.003%
49	8.514	2227	2231	2234	rBV2	238	179	0.01%	0.002%
50	8.552	2234	2243	2253	rBV3	5539	8380	0.55%	0.079%
51	8.639	2256	2270	2321	rBV2	398492	905033	59.34%	8.541%
52	8.957	2366	2369	2374	rVB3	332	295	0.02%	0.003%
53	9.051	2392	2398	2402	rVB2	355	400	0.03%	0.004%
54	9.076	2402	2406	2410	rBV2	388	323	0.02%	0.003%
55	9.099	2410	2413	2416	rBV2	257	173	0.01%	0.002%
56	9.198	2440	2444	2447	rVB2	213	163	0.01%	0.002%
57	9.263	2462	2464	2469	rVB2	334	291	0.02%	0.003%
58	9.321	2478	2482	2484	rBV2	237	194	0.01%	0.002%
59	9.417	2499	2512	2545	rBV	533721	896868	58.80%	8.464%
60	9.581	2558	2563	2566	rBV2	366	301	0.02%	0.003%
61	9.729	2606	2609	2615	rVB	232	241	0.02%	0.002%
62	9.761	2615	2619	2621	rBV	319	217	0.01%	0.002%
63	9.890	2652	2659	2661	rBV	243	278	0.02%	0.003%
64	9.922	2667	2669	2674	rVB	310	192	0.01%	0.002%
65	10.073	2713	2716	2720	rVB2	299	186	0.01%	0.002%
66	10.092	2720	2722	2729	rVB	218	190	0.01%	0.002%
67	10.214	2756	2760	2765	rVB2	207	178	0.01%	0.002%
68	10.279	2776	2780	2782	rBV2	244	189	0.01%	0.002%
69	10.324	2790	2794	2797	rBV	316	281	0.02%	0.003%
70	10.369	2806	2808	2813	rVB2	261	186	0.01%	0.002%
71	10.436	2823	2829	2833	rVB2	338	421	0.03%	0.004%
72	10.758	2915	2929	2947	rBV	531067	858890	56.31%	8.105%
73	10.893	2967	2971	2974	rBV	394	300	0.02%	0.003%
74	10.909	2974	2976	2977	rBV	382	167	0.01%	0.002%
75	10.986	2996	3000	3004	rBV	153	173	0.01%	0.002%
76	11.070	3022	3026	3028	rBV2	290	213	0.01%	0.002%

Data Path : Z:\voasrv\HPCHEM1\MSVOA_U\Data\VU082922\
 Data File : VU050491.D
 Acq On : 29 Aug 2022 17:56
 Operator : SY/MD
 Sample : N4319-03
 Misc : 5.0mL/MSVOA_U/WATER
 ALS Vial : 20 Sample Multiplier: 1

Instrument :
 MSVOA_U
 ClientSampleId :
 VHBLK001

Integration Parameters: LSCINT.P

Integrator: RTE
 Smoothing : OFF
 Sampling : 1
 Start Thrs: 0.2
 Stop Thrs : 0

Filtering: 5
 Min Area: 0 % of largest Peak
 Max Peaks: 100
 Peak Location: TOP

If leading or trailing edge < 100 prefer < Baseline drop else tangent >
 Peak separation: 5

Method : Z:\voasrv\HPCHEM1\MSVOA_U\Method\SFAMULM082422WMA.M
 Title : VOC Analysis

77	11.140	3044	3048	3054	rBV2	239	242	0.02%	0.002%
78	11.169	3054	3057	3059	rBV	250	182	0.01%	0.002%
79	11.327	3103	3106	3109	rBV2	190	162	0.01%	0.002%
80	11.378	3117	3122	3127	rBV	251	304	0.02%	0.003%
81	11.417	3127	3134	3140	rBV	484	514	0.03%	0.005%
82	11.620	3193	3197	3199	rBV2	263	183	0.01%	0.002%
83	11.674	3210	3214	3216	rBV	405	359	0.02%	0.003%
84	11.812	3244	3257	3281	rBV	393067	635035	41.64%	5.993%
85	12.012	3316	3319	3322	rVB2	411	269	0.02%	0.003%
86	12.066	3330	3336	3339	rBV6	1492	1655	0.11%	0.016%
87	12.192	3360	3375	3395	rBV	494977	815289	53.45%	7.694%
88	12.726	3537	3541	3543	rBV	345	278	0.02%	0.003%
89	12.758	3548	3551	3554	rBV2	293	170	0.01%	0.002%
90	12.783	3554	3559	3562	rBV3	362	372	0.02%	0.004%
91	12.845	3573	3578	3583	rBV2	374	394	0.03%	0.004%
92	12.870	3583	3586	3591	rBV2	484	438	0.03%	0.004%
93	12.893	3591	3593	3596	rVV2	303	201	0.01%	0.002%
94	12.970	3613	3617	3618	rBV2	472	305	0.02%	0.003%
95	13.076	3647	3650	3651	rBV2	236	162	0.01%	0.002%
96	13.185	3681	3684	3686	rBV2	338	211	0.01%	0.002%
97	13.240	3698	3701	3709	rVB2	459	385	0.03%	0.004%
98	13.340	3728	3732	3736	rBV2	339	359	0.02%	0.003%
99	13.394	3746	3749	3754	rBV3	475	370	0.02%	0.003%
100	13.420	3754	3757	3763	rBV3	352	411	0.03%	0.004%

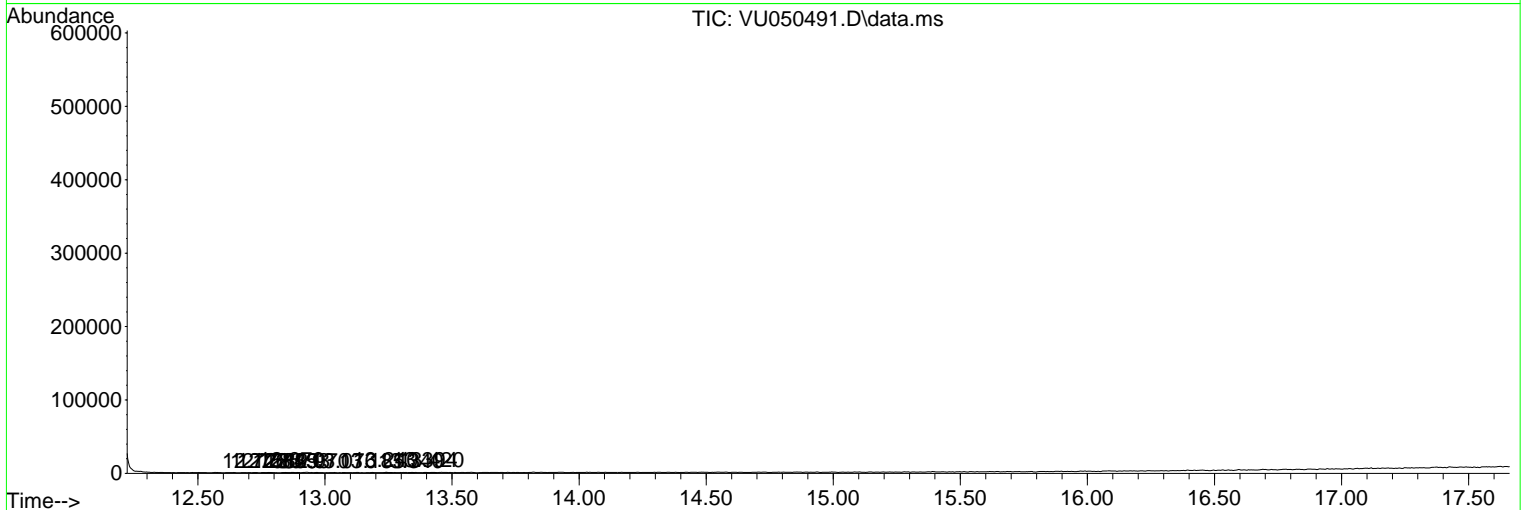
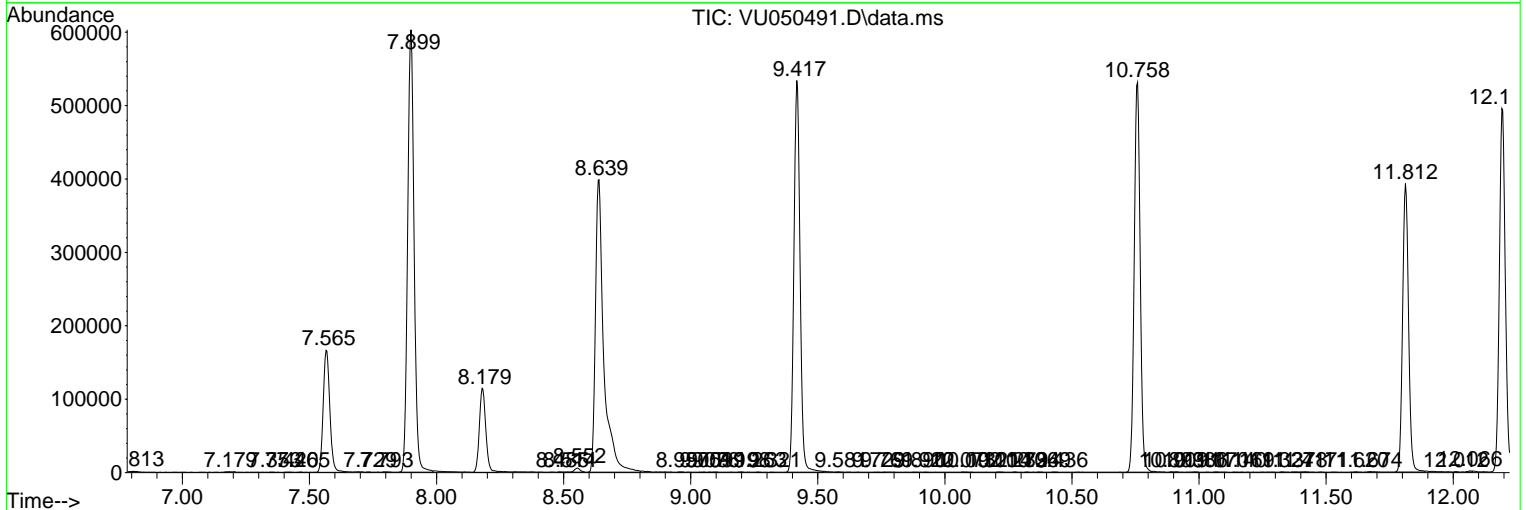
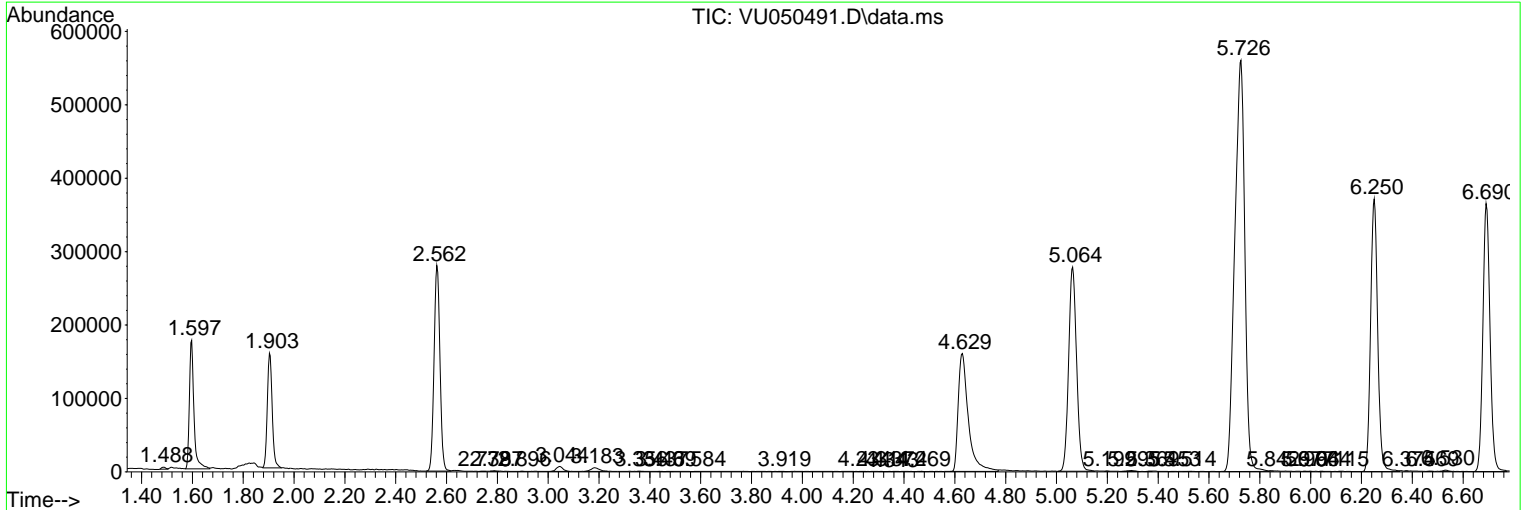
Sum of corrected areas: 10596750

Data Path : Z:\voasrv\HPCHEM1\MSVOA_U\Data\VU082922\
 Data File : VU050491.D
 Acq On : 29 Aug 2022 17:56
 Operator : SY/MD
 Sample : N4319-03
 Misc : 5.0mL/MSVOA_U/WATER
 ALS Vial : 20 Sample Multiplier: 1

Instrument :
 MSVOA_U
ClientSampleId :
 VHBLK001

Quant Method : Z:\voasrv\HPCHEM1\MSVOA_U\Method\SFAMULM082422WMA.M
 Quant Title : VOC Analysis

TIC Library : C:\Database\NIST20.L
 TIC Integration Parameters: LSCINT.P



Library Search Compound Report

Data Path : Z:\voasrv\HPCHEM1\MSVOA_U\Data\VU082922\
Data File : VU050491.D
Acq On : 29 Aug 2022 17:56
Operator : SY/MD
Sample : N4319-03
Misc : 5.0mL/MSVOA_U/WATER
ALS Vial : 20 Sample Multiplier: 1

Instrument :
MSVOA_U
ClientSampleId :
VHBLK001

Quant Method : Z:\voasrv\HPCHEM1\MSVOA_U\Method\SFAMULM082422WMA.M
Quant Title : VOC Analysis

TIC Library : C:\Database\NIST20.L
TIC Integration Parameters: LSCINT.P

No Library Search Compounds Detected

Data Path : Z:\voasrv\HPCHEM1\MSVOA_U\Data\VU082922\
Data File : VU050491.D
Acq On : 29 Aug 2022 17:56
Operator : SY/MD
Sample : N4319-03
Misc : 5.0mL/MSVOA_U/WATER
ALS Vial : 20 Sample Multiplier: 1

Instrument :
MSVOA_U
ClientSampleId :
VHBLK001

Quant Method : Z:\voasrv\HPCHEM1\MSVOA_U\Method\SFAMULM082422WMA.M
Quant Title : VOC Analysis

TIC Library : C:\Database\NIST0.L
TIC Integration Parameters: LSCINT.P

TIC Top Hit name	RT	EstConc	Units	Response	--Internal Standard--		
					#	RT	Resp Conc
