

Data Path : Z:\voasrv\HPCHEM1\MSVOA\_U\Data\VU082923\  
 Data File : VU054961.D  
 Acq On : 29 Aug 2023 16:59  
 Operator : MD/SY  
 Sample : 04173-10DL 10X  
 Misc : 25.0mL/MSVOA\_U/WATER  
 ALS Vial : 20 Sample Multiplier: 1

Instrument :  
 MSVOA\_U  
 ClientSampleId :  
 C0AL4DL

Integration Parameters: rteint.p  
 Integrator: RTE  
 Smoothing : ON Filtering: 5  
 Sampling : 1 Min Area: 3 % of largest Peak  
 Start Thrs: 0.1 Max Peaks: 100  
 Stop Thrs : 0 Peak Location: TOP

If leading or trailing edge < 100 prefer < Baseline drop else tangent >  
 Peak separation: 5

Method : Z:\voasrv\HPCHEM1\MSVOA\_U\Method\SFAMUTR082823WMA.M  
 Title : TRACE VOA SFAM1.0

Signal : TIC: VU054961.D\data.ms

peak #	R.T. min	first scan	max scan	last scan	PK TY	peak height	corr. area	corr. % max.	% of total
1	1.595	87	95	112	rBV	39292	48525	6.56%	0.931%
2	1.907	185	192	205	rVB	47452	61595	8.33%	1.182%
3	2.563	384	396	411	rBV	78670	129507	17.50%	2.484%
4	3.039	532	544	561	rBV	68391	129277	17.47%	2.480%
5	3.181	575	588	603	rBV2	8103	18392	2.49%	0.353%
6	4.637	1025	1041	1042	rBV2	132171	211593	28.60%	4.059%
7	5.062	1156	1173	1196	rBV2	106130	235311	31.81%	4.514%
8	5.724	1359	1379	1397	rBV2	193150	514855	69.59%	9.877%
9	6.248	1528	1542	1560	rBV2	225881	437118	59.08%	8.386%
10	6.541	1620	1633	1651	rBV3	59756	118939	16.08%	2.282%
11	6.688	1665	1679	1696	rBV	130254	260089	35.15%	4.990%
12	7.566	1938	1952	1976	rBV2	53807	100832	13.63%	1.934%
13	7.897	2039	2055	2081	rBV	228197	413674	55.91%	7.936%
14	8.180	2132	2143	2157	rBV2	32717	56481	7.63%	1.084%
15	8.634	2273	2284	2326	rBV2	337347	739845	100.00%	14.193%
16	9.415	2515	2527	2552	rBV	309087	544620	73.61%	10.448%
17	10.756	2930	2944	2958	rBV	117842	194271	26.26%	3.727%
18	10.894	2978	2987	2998	rVB3	4897	8520	1.15%	0.163%
19	11.810	3260	3272	3297	rBV	339290	557174	75.31%	10.689%
20	12.193	3378	3391	3408	rBV	258372	432004	58.39%	8.288%

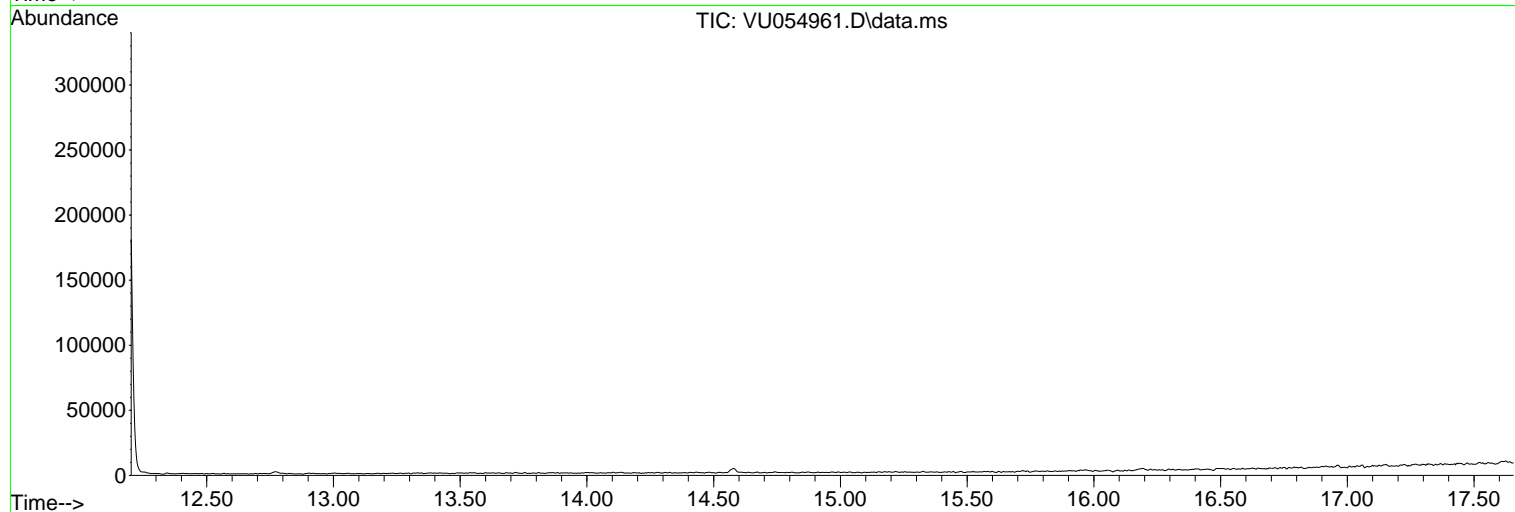
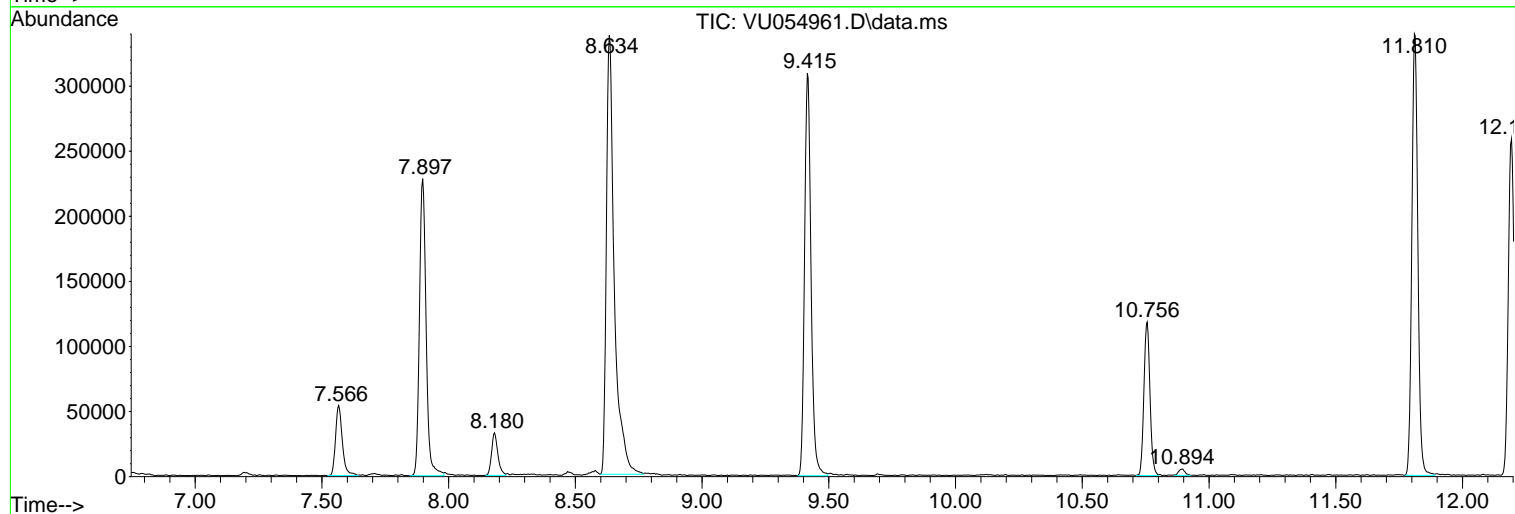
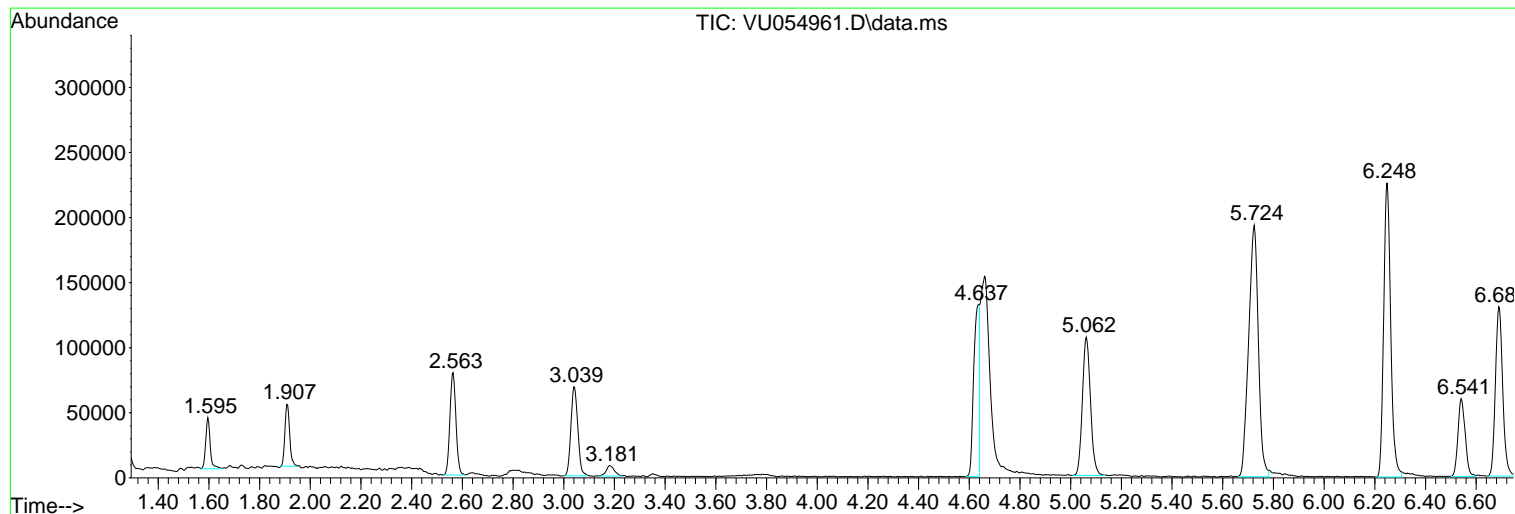
Sum of corrected areas: 5212622

Data Path : Z:\voasrv\HPCHEM1\MSVOA\_U\Data\VU082923\  
Data File : VU054961.D  
Acq On : 29 Aug 2023 16:59  
Operator : MD/SY  
Sample : 04173-10DL 10X  
Misc : 25.0mL/MSVOA\_U/WATER  
ALS Vial : 20 Sample Multiplier: 1

Instrument :  
MSVOA\_U  
ClientSampleId :  
COAL4DL

Quant Method : Z:\voasrv\HPCHEM1\MSVOA\_U\Method\SFAMUTR082823WMA.M  
Quant Title : TRACE VOA SFAM1.0

TIC Library : C:\Database\NIST20.L  
TIC Integration Parameters: LSCINT.P



Library Search Compound Report

Data Path : Z:\voasrv\HPCHEM1\MSVOA\_U\Data\VU082923\  
Data File : VU054961.D  
Acq On : 29 Aug 2023 16:59  
Operator : MD/SY  
Sample : 04173-10DL 10X  
Misc : 25.0mL/MSVOA\_U/WATER  
ALS Vial : 20 Sample Multiplier: 1

Instrument :  
MSVOA\_U  
ClientSampleId :  
C0AL4DL

Quant Method : Z:\voasrv\HPCHEM1\MSVOA\_U\Method\SFAMUTR082823WMA.M  
Quant Title : TRACE VOA SFAM1.0

TIC Library : C:\Database\NIST20.L  
TIC Integration Parameters: LSCINT.P

No Library Search Compounds Detected

\*\*\*\*\*

Data Path : Z:\voasrv\HPCHEM1\MSVOA\_U\Data\VU082923\  
Data File : VU054961.D  
Acq On : 29 Aug 2023 16:59  
Operator : MD/SY  
Sample : 04173-10DL 10X  
Misc : 25.0mL/MSVOA\_U/WATER  
ALS Vial : 20 Sample Multiplier: 1

Instrument :  
MSVOA\_U  
ClientSampleId :  
C0AL4DL

Quant Method : Z:\voasrv\HPCHEM1\MSVOA\_U\Method\SFAMUTR082823WMA.M  
Quant Title : TRACE VOA SFAM1.0

TIC Library : C:\Database\NIST20.L  
TIC Integration Parameters: LSCINT.P

TIC Top Hit name	RT	EstConc	Units	Response	--Internal Standard--		
					#	RT	Resp Conc

---