

Data Path : Z:\VOASRV\HPCHEM1\MSVOA\_U\DATA\VU083019\  
 Data File : VU034070.D  
 Acq On : 29 Aug 2019 18:23  
 Operator : JC/SP  
 Sample : K4595-01ME  
 Misc : 6.22g/5mL/100uL/5.0mL/MSVOA\_U/MEOH  
 ALS Vial : 20 Sample Multiplier: 1

Instrument :  
 MSVOA\_U  
 ClientSampleId :  
 S502-K2-9.5-10.0-082819ME

Quant Time: Aug 30 04:48:23 2019  
 Quant Method : Z:\VOASRV\HPCHEM1\MSVOA\_U\METHOD\82U082919W.M  
 Quant Title : SW846 8260  
 QLast Update : Thu Aug 29 04:11:12 2019  
 Response via : Initial Calibration

Internal Standards	R.T.	QIon	Response	Conc	Units	Dev(Min)
1) Pentafluorobenzene	4.95	168	492115	50.00	ug/l	0.00
34) 1,4-Difluorobenzene	5.86	114	783294	50.00	ug/l	0.00
63) Chlorobenzene-d5	9.07	117	763990	50.00	ug/l	0.00
72) 1,4-Dichlorobenzene-d4	11.47	152	393096	50.00	ug/l	0.00

## System Monitoring Compounds

33) 1,2-Dichloroethane-d4	5.28	65	307942	48.84	ug/l	0.00
Spiked Amount	50.000		Recovery	=	97.68%	
35) Dibromofluoromethane	4.86	113	252099	46.40	ug/l	0.00
Spiked Amount	50.000		Recovery	=	92.80%	
50) Toluene-d8	7.55	98	983288	48.34	ug/l	0.00
Spiked Amount	50.000		Recovery	=	96.68%	
62) 4-Bromofluorobenzene	10.30	95	369484	46.69	ug/l	0.00
Spiked Amount	50.000		Recovery	=	93.38%	

## Target Compounds

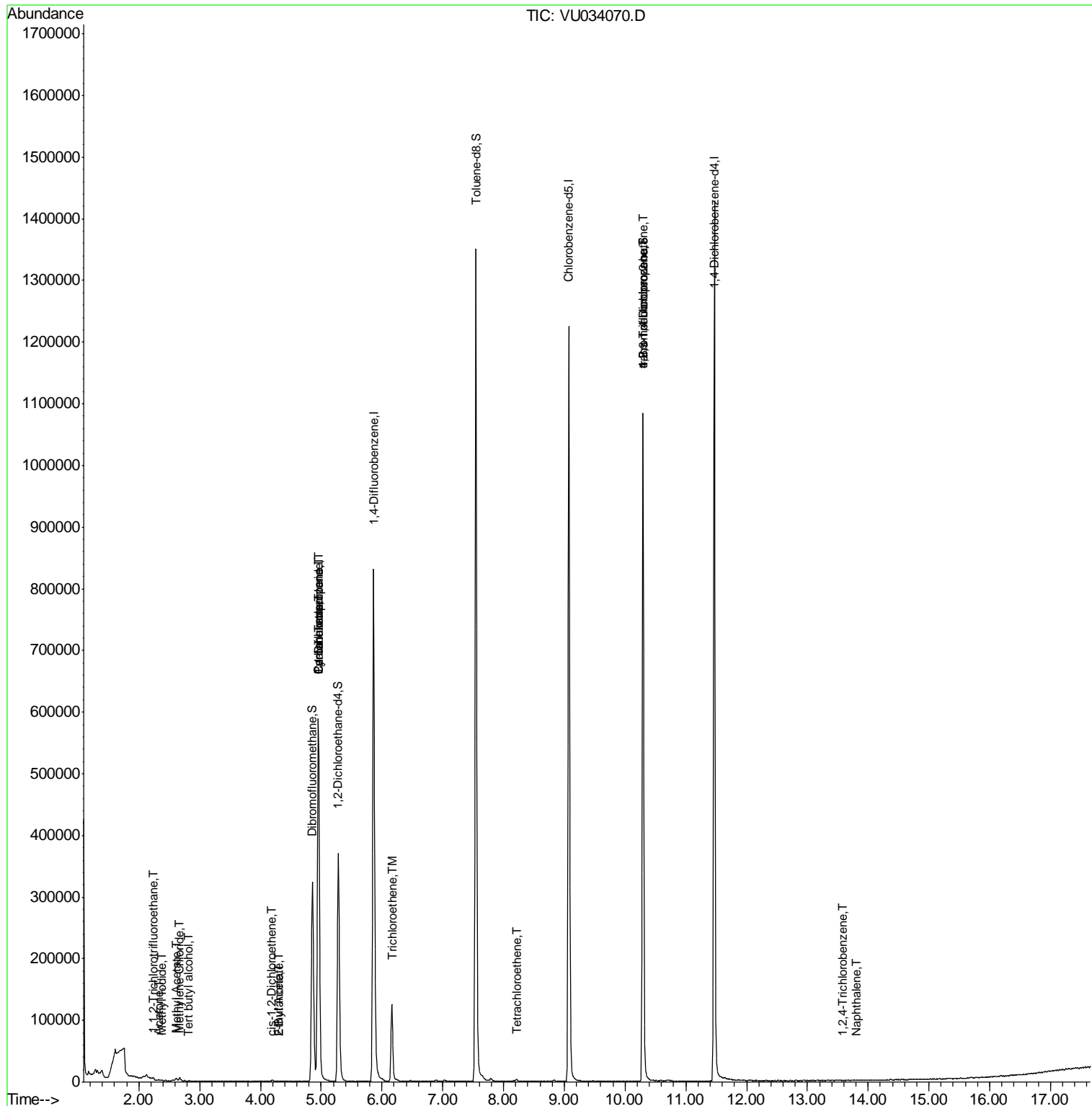
					Qvalue
3) Chloromethane	1.32	50	4243	Below Cal	100
5) Bromomethane	1.59	94	2372	Below Cal	92
9) 1,1,2-Trichlorotrifluoroet	2.24	101	1058	0.219 ug/l	93
10) Methyl Iodide	2.37	142	1395	0.203 ug/l #	88
11) Tert butyl alcohol	2.81	59	345	0.237 ug/l #	73
16) Acetone	2.33	43	1382	0.430 ug/l	94
18) Methyl Acetate	2.61	43	7343	0.883 ug/l	97
20) Methylene Chloride	2.68	84	2388	0.392 ug/l #	83
25) 2-Butanone	4.30	43	3000	0.670 ug/l	95
27) cis-1,2-Dichloroethene	4.19	96	1230	0.205 ug/l	92
31) Cyclohexane	4.95	56	8812	0.936 ug/l #	1
36) 1,1-Dichloropropene	4.95	75	36667	4.949 ug/l #	48
37) Ethyl Acetate	4.30	43	3000	0.362 ug/l #	68
38) Carbon Tetrachloride	4.95	117	46105	6.447 ug/l #	16
44) Trichloroethene	6.16	130	48201	8.188 ug/l	93
64) Tetrachloroethene	8.21	164	1077	0.210 ug/l #	75
76) 1,2,3-Trichloropropane	10.30	75	181335	20.467 ug/l #	37
81) trans-1,4-Dichloro-2-buten	10.30	75	181335	68.919 ug/l #	100
93) 1,2,4-Trichlorobenzene	13.58	180	41	1.119 ug/l #	82
95) Naphthalene	13.81	128	109	1.794 ug/l #	70

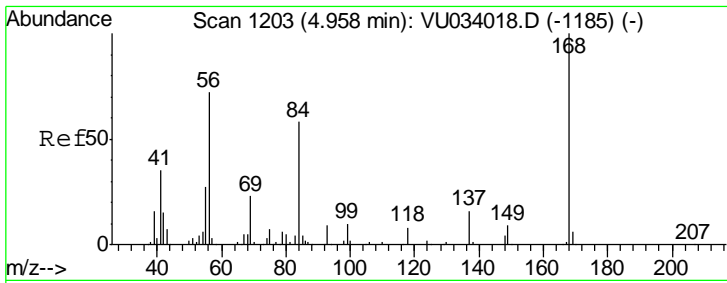
(#) = qualifier out of range (m) = manual integration (+) = signals summed

Data Path : Z:\VOASRV\HPCHEM1\MSVOA\_U\DATA\VU083019\  
 Data File : VU034070.D  
 Acq On : 29 Aug 2019 18:23  
 Operator : JC/SP  
 Sample : K4595-01ME  
 Misc : 6.22g/5mL/100uL/5.0mL/MSVOA\_U/MEOH  
 ALS Vial : 20 Sample Multiplier: 1

**Instrument :**  
 MSVOA\_U  
**Client Sampled :**  
 S502-K2-9.5-10.0-082819ME

Quant Time: Aug 30 04:48:23 2019  
 Quant Method : Z:\VOASRV\HPCHEM1\MSVOA\_U\METHOD\82U082919W.M  
 Quant Title : SW846 8260  
 QLast Update : Thu Aug 29 04:11:12 2019  
 Response via : Initial Calibration

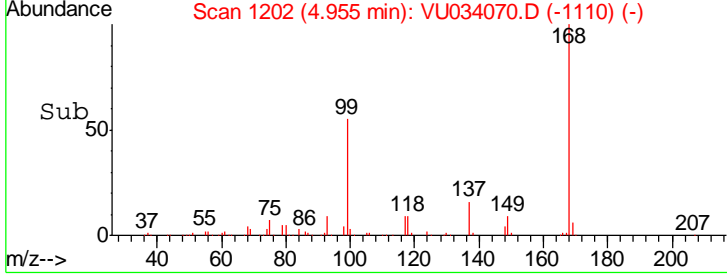
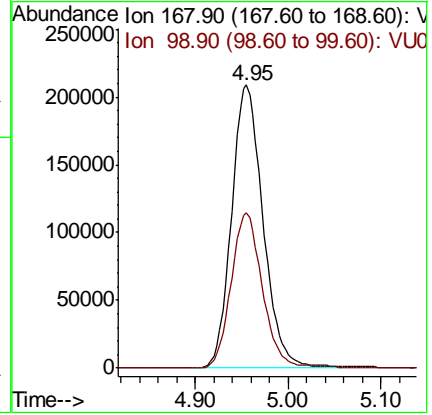
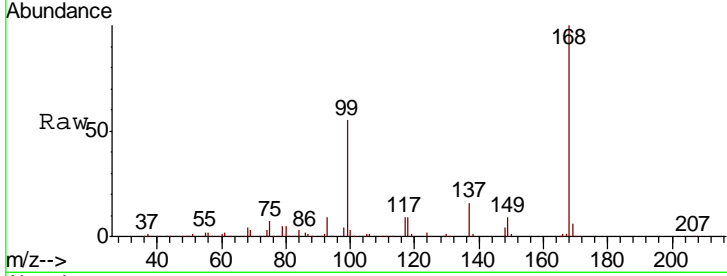




#1  
 Pentafluorobenzene  
 Concen: 50.000 ug/l  
 RT: 4.95 min Scan# 1202  
 Delta R.T. -0.00 min  
 Lab File: VU034070.D  
 Acq: 29 Aug 2019 18:23

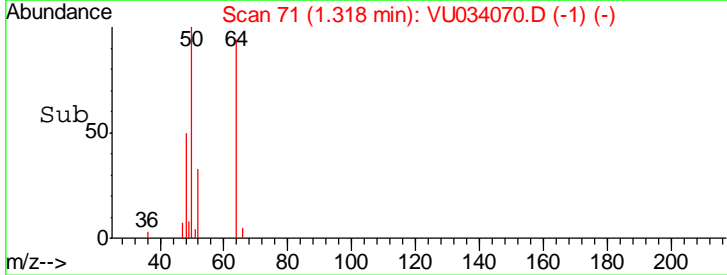
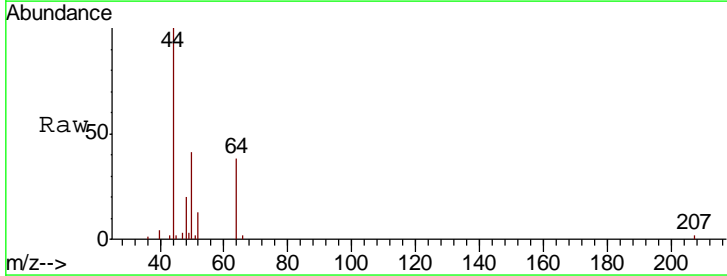
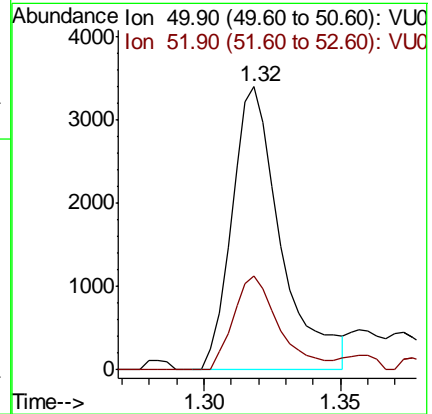
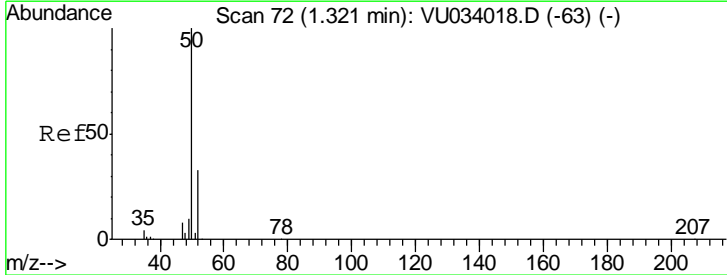
Instrument : MSVOA\_U  
 ClientSampleId : S502-K2-9.5-10.0-082819ME

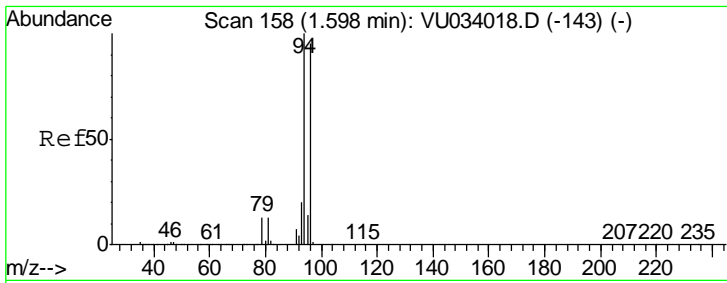
Tgt Ion:168 Resp: 492115  
 Ion Ratio Lower Upper  
 168 100  
 99 54.8 42.3 63.5



#3  
 Chloromethane  
 Concen: Below Cal  
 RT: 1.32 min Scan# 71  
 Delta R.T. -0.00 min  
 Lab File: VU034070.D  
 Acq: 29 Aug 2019 18:23

Tgt Ion: 50 Resp: 4243  
 Ion Ratio Lower Upper  
 50 100  
 52 33.0 26.2 39.4

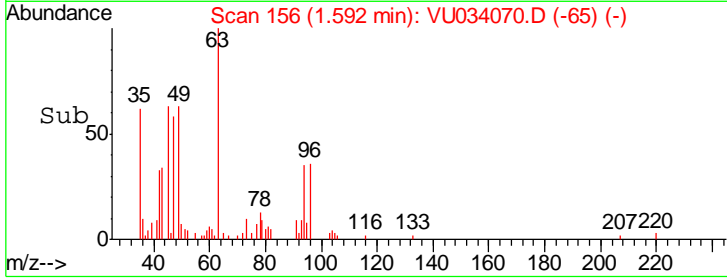
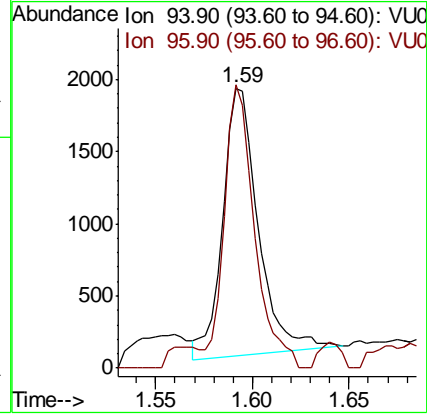
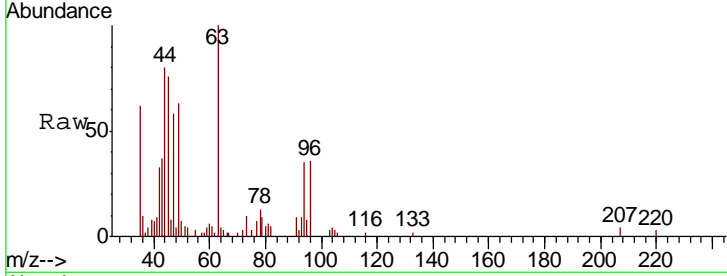




#5  
 Bromomethane  
 Concen: Below Cal  
 RT: 1.59 min Scan# 156  
 Delta R.T. -0.01 min  
 Lab File: VU034070.D  
 Acq: 29 Aug 2019 18:23

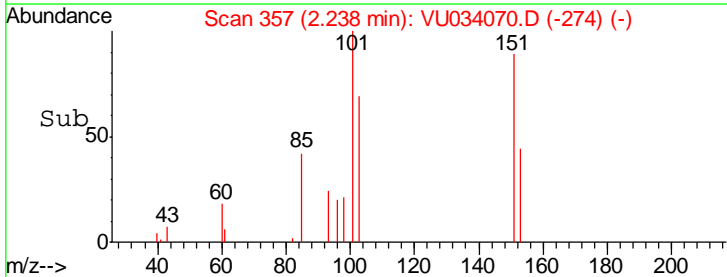
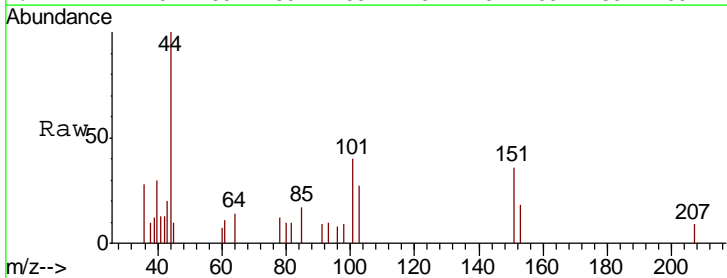
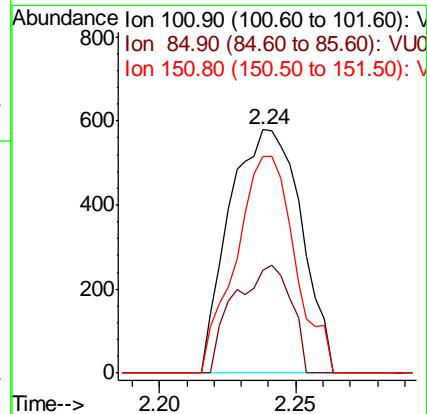
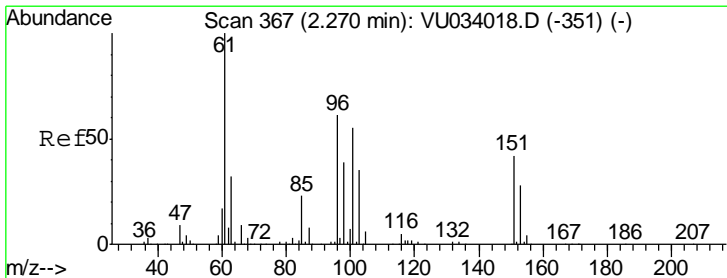
Instrument : MSVOA\_U  
 ClientSampleId : S502-K2-9.5-10.0-082819ME

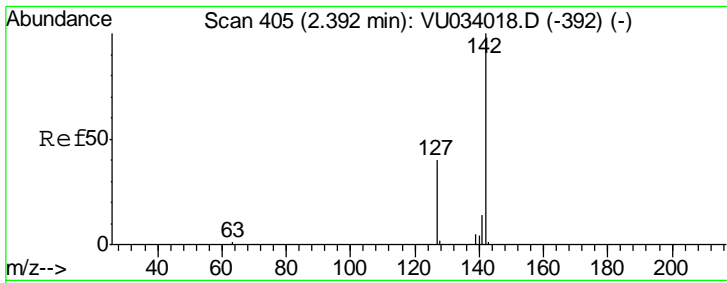
Tgt Ion: 94 Resp: 2372  
 Ion Ratio Lower Upper  
 94 100  
 96 103.6 76.3 114.5



#9  
 1,1,2-Trichlorotrifluoroethane  
 Concen: 0.219 ug/l  
 RT: 2.24 min Scan# 357  
 Delta R.T. -0.03 min  
 Lab File: VU034070.D  
 Acq: 29 Aug 2019 18:23

Tgt Ion: 101 Resp: 1058  
 Ion Ratio Lower Upper  
 101 100  
 85 35.0 34.2 51.2  
 151 73.2 61.4 92.2



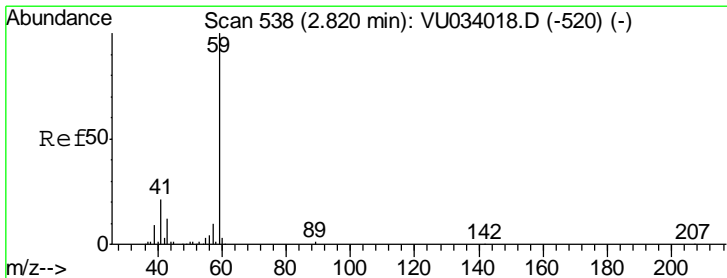
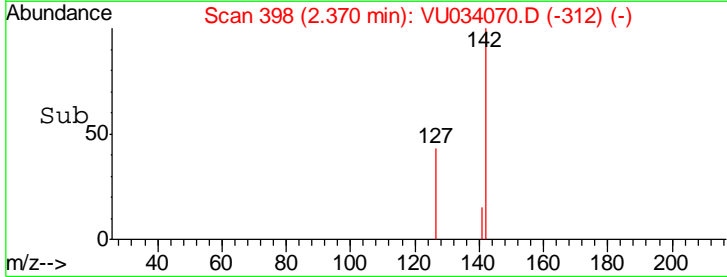
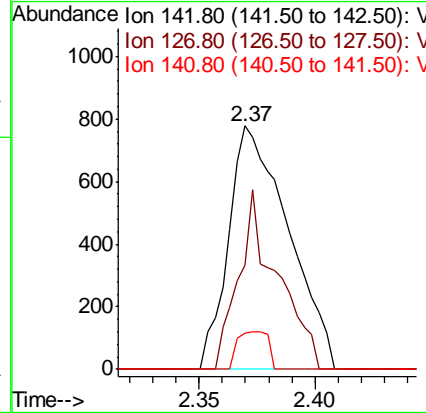
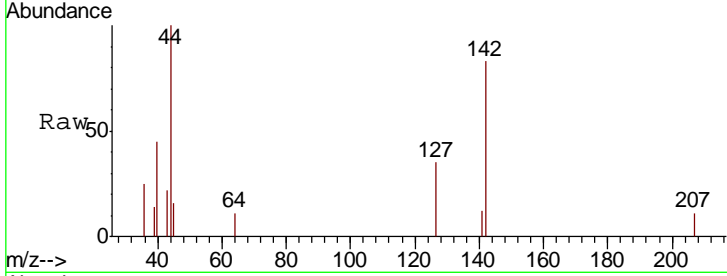


#10  
Methyl Iodide  
Concen: 0.203 ug/l  
RT: 2.37 min Scan# 398  
Delta R.T. -0.02 min  
Lab File: VU034070.D  
Acq: 29 Aug 2019 18:23

Instrument : MSVOA\_U  
ClientSampleId : S502-K2-9.5-10.0-082819ME

Tgt Ion: 142 Resp: 1395

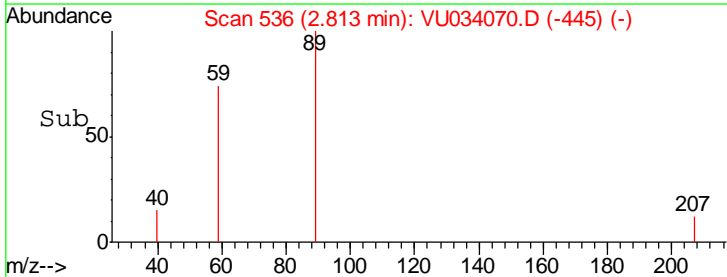
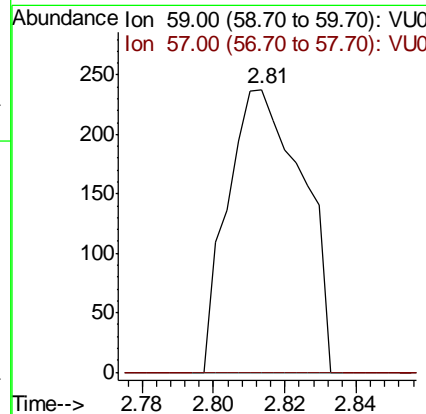
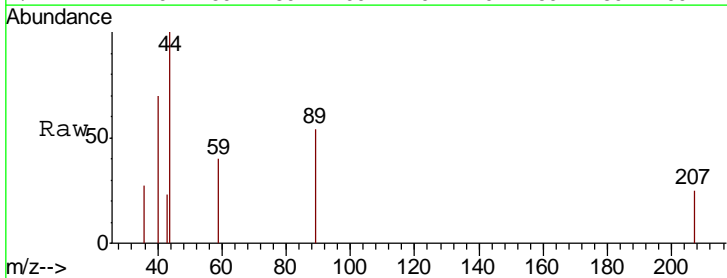
Ion	Ratio	Lower	Upper
142	100		
127	47.7	32.6	48.8
141	7.8	11.3	16.9#

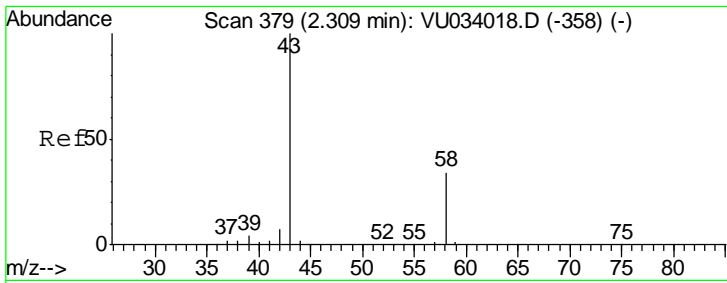


#11  
Tert butyl alcohol  
Concen: 0.237 ug/l  
RT: 2.81 min Scan# 536  
Delta R.T. -0.01 min  
Lab File: VU034070.D  
Acq: 29 Aug 2019 18:23

Tgt Ion: 59 Resp: 345

Ion	Ratio	Lower	Upper
59	100		
57	0.0	8.0	12.0#

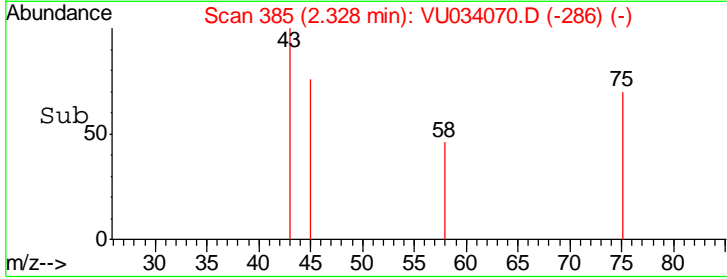
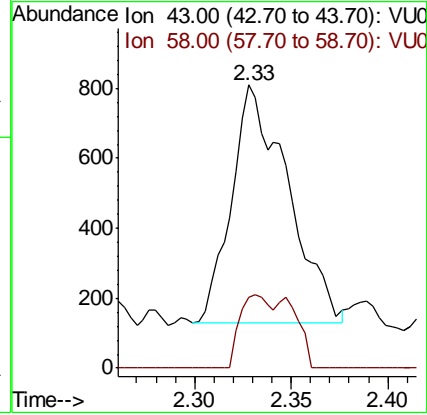
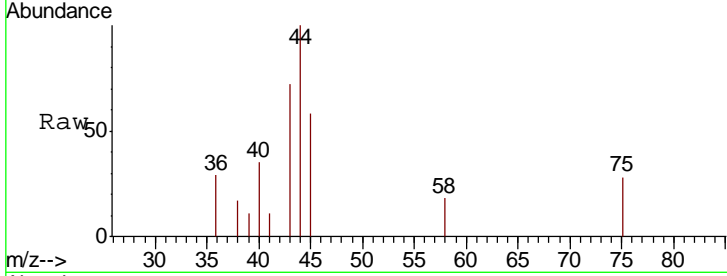




#16  
 Acetone  
 Concen: 0.430 ug/l  
 RT: 2.33 min Scan# 385  
 Delta R.T. 0.02 min  
 Lab File: VU034070.D  
 Acq: 29 Aug 2019 18:23

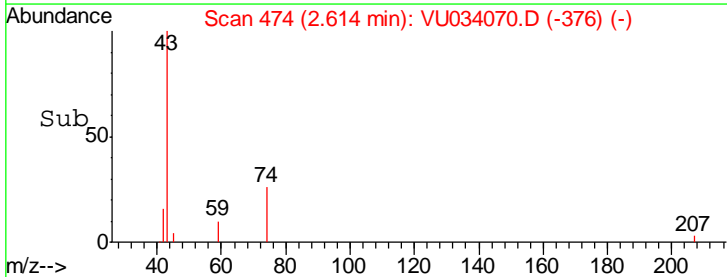
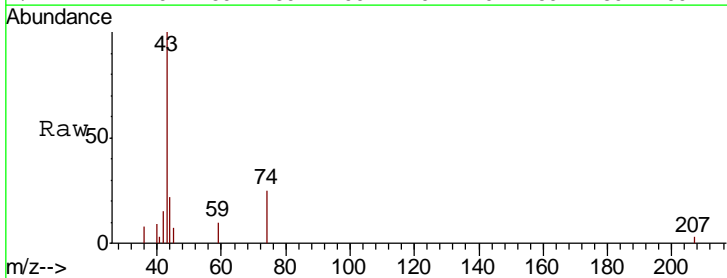
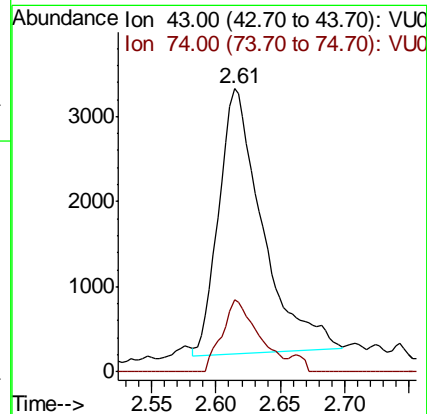
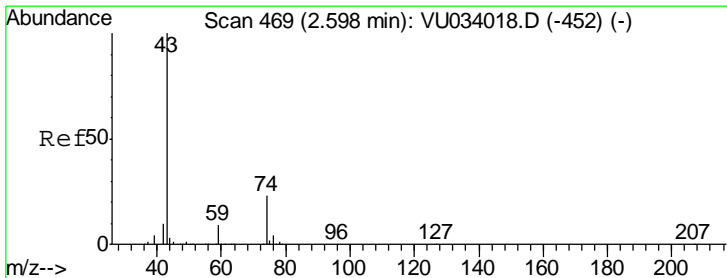
Instrument :  
 MSVOA\_U  
 ClientSampled :  
 S502-K2-9.5-10.0-082819ME

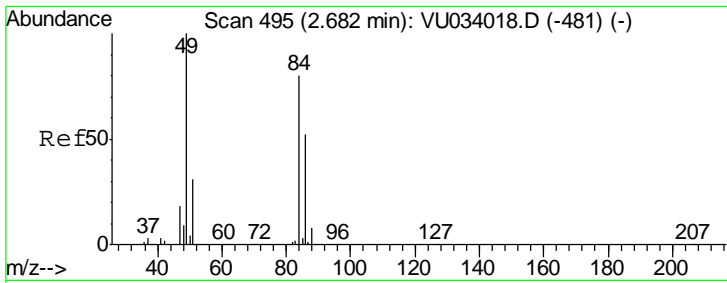
Tgt Ion: 43 Resp: 1382  
 Ion Ratio Lower Upper  
 43 100  
 58 30.0 26.8 40.2



#18  
 Methyl Acetate  
 Concen: 0.883 ug/l  
 RT: 2.61 min Scan# 474  
 Delta R.T. 0.02 min  
 Lab File: VU034070.D  
 Acq: 29 Aug 2019 18:23

Tgt Ion: 43 Resp: 7343  
 Ion Ratio Lower Upper  
 43 100  
 74 22.5 19.2 28.8

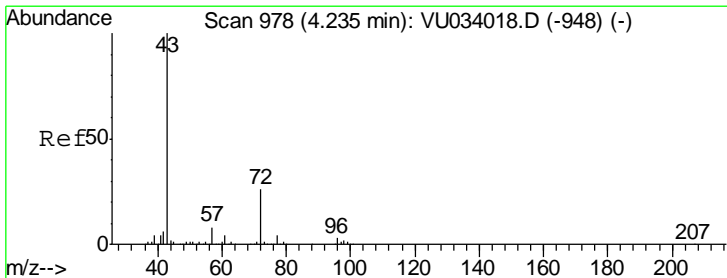
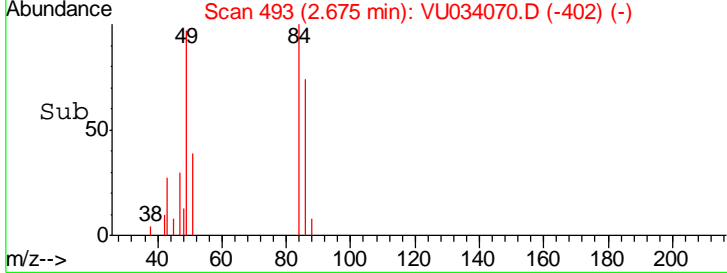
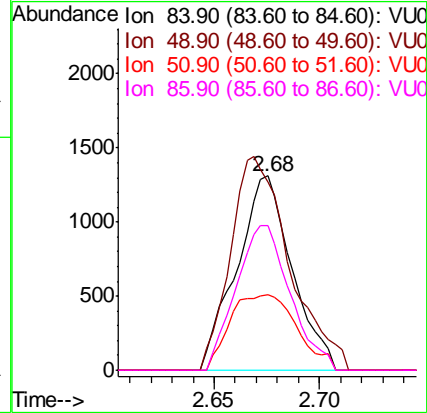
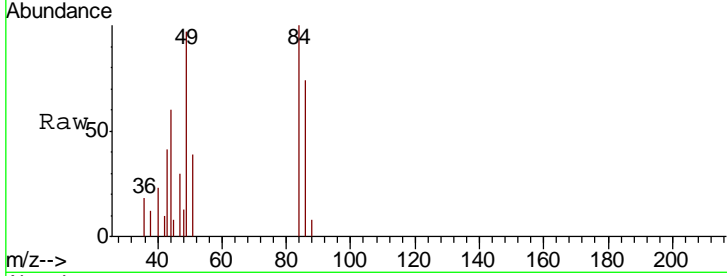




#20  
 Methylene Chloride  
 Concen: 0.392 ug/l  
 RT: 2.68 min Scan# 493  
 Delta R.T. -0.01 min  
 Lab File: VU034070.D  
 Acq: 29 Aug 2019 18:23

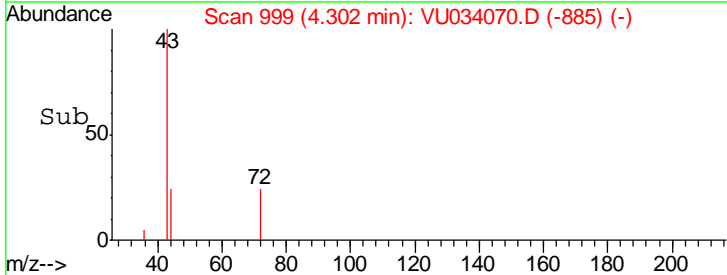
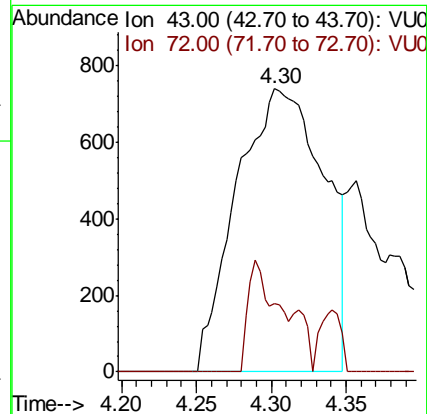
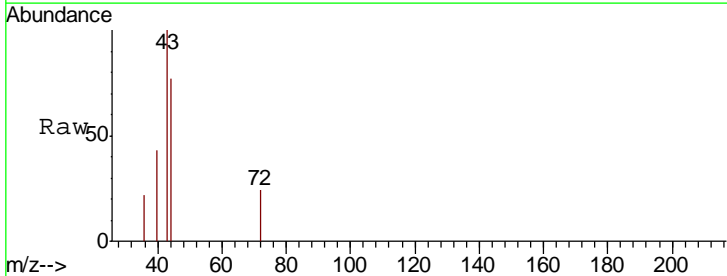
Instrument :  
 MSVOA\_U  
 ClientSampleId :  
 S502-K2-9.5-10.0-082819ME

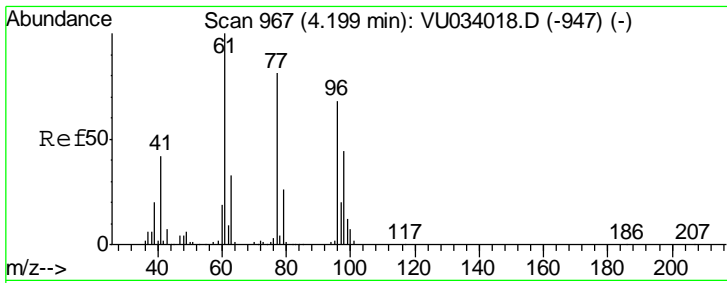
Tgt Ion	Resp	Lower	Upper
84	100		
49	97.1	100.2	150.4#
51	38.7	30.8	46.2
86	74.2	52.5	78.7



#25  
 2-Butanone  
 Concen: 0.670 ug/l  
 RT: 4.30 min Scan# 999  
 Delta R.T. 0.07 min  
 Lab File: VU034070.D  
 Acq: 29 Aug 2019 18:23

Tgt Ion	Resp	Lower	Upper
43	100		
72	24.1	21.2	31.8

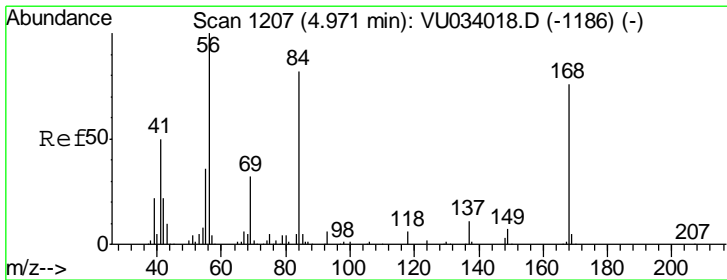
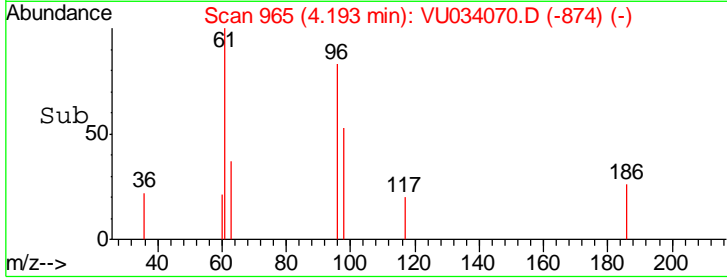
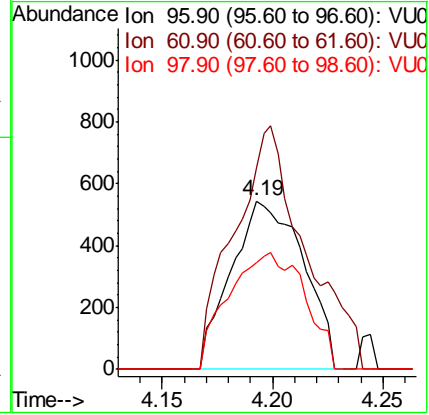
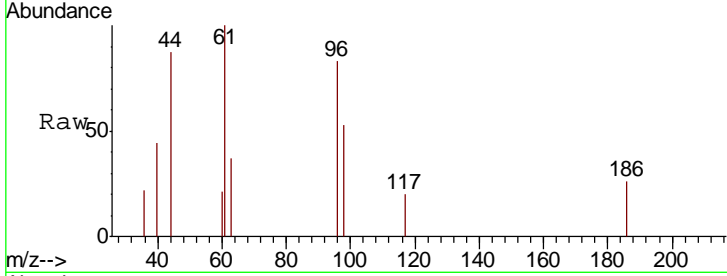




#27  
 cis-1,2-Dichloroethene  
 Concen: 0.205 ug/l  
 RT: 4.19 min Scan# 965  
 Delta R.T. -0.01 min  
 Lab File: VU034070.D  
 Acq: 29 Aug 2019 18:23

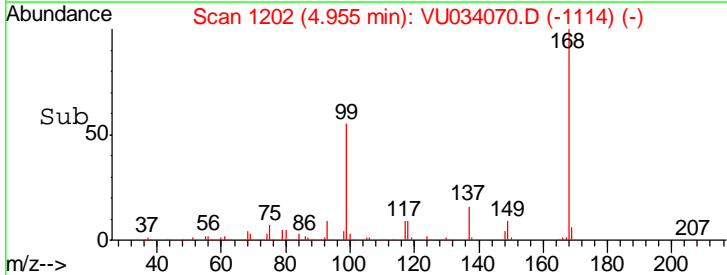
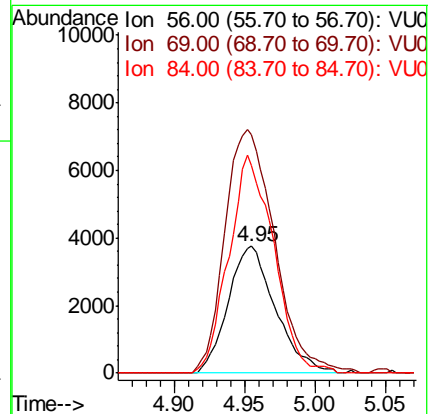
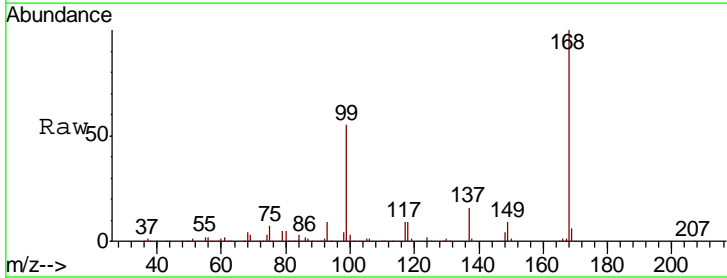
Instrument :  
 MSVOA\_U  
 ClientSampleId :  
 S502-K2-9.5-10.0-082819ME

Tgt Ion	Resp	Lower	Upper
96	1230		
61	142.6	0.0	303.0
98	73.3	0.0	129.2

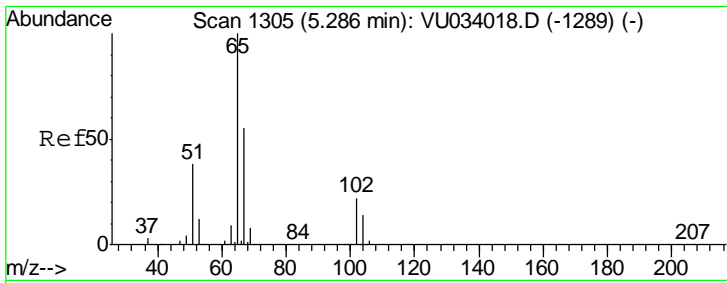


#31  
 Cyclohexane  
 Concen: 0.936 ug/l  
 RT: 4.95 min Scan# 1202  
 Delta R.T. -0.02 min  
 Lab File: VU034070.D  
 Acq: 29 Aug 2019 18:23

Tgt Ion	Resp	Lower	Upper
56	8812		
69	187.9	25.4	38.0#
84	164.3	65.8	98.8#



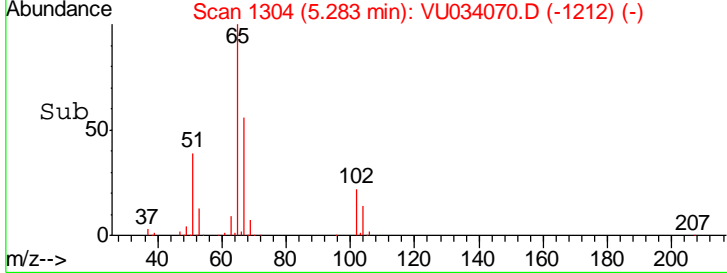
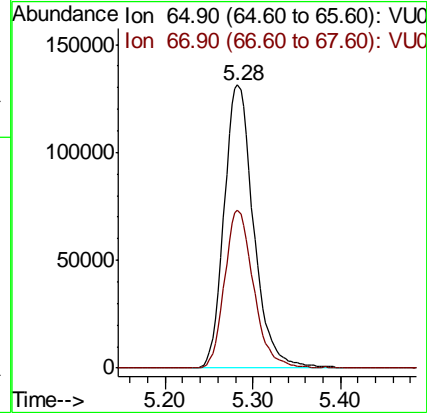
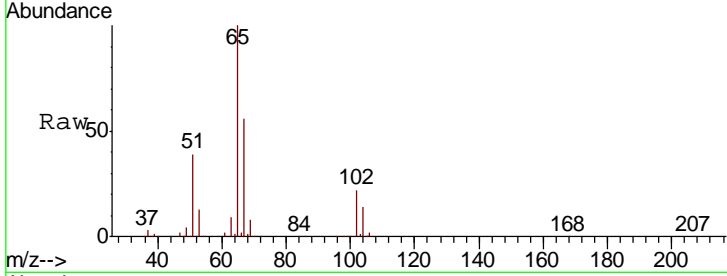




#33  
 1,2-Dichloroethane-d4  
 Concen: 48.836 ug/l  
 RT: 5.28 min Scan# 1304  
 Delta R.T. -0.00 min  
 Lab File: VU034070.D  
 Acq: 29 Aug 2019 18:23

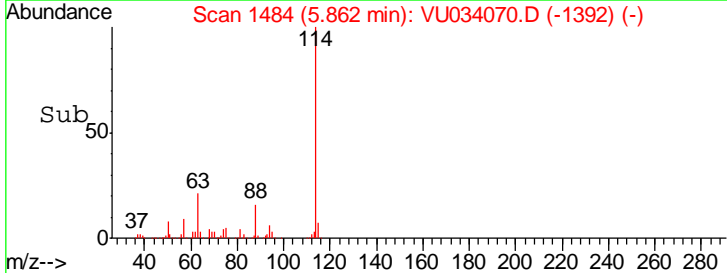
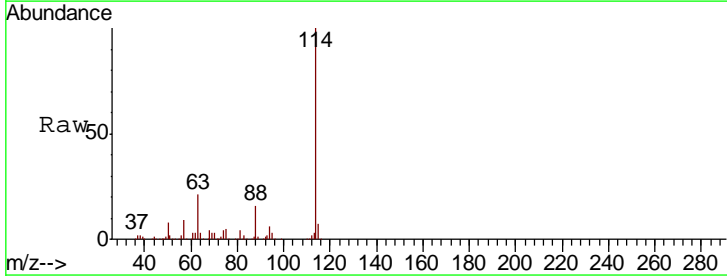
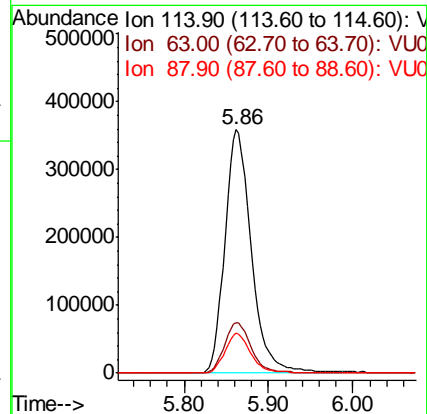
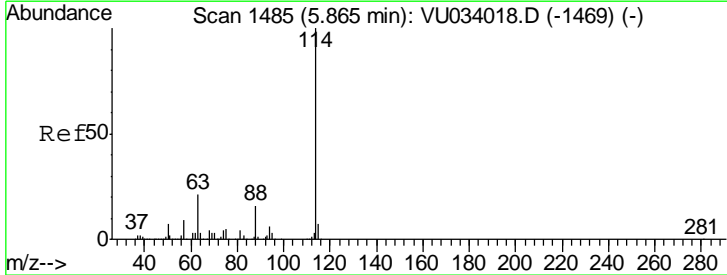
**Instrument :**  
 MSVOA\_U  
**ClientSampled :**  
 S502-K2-9.5-10.0-082819ME

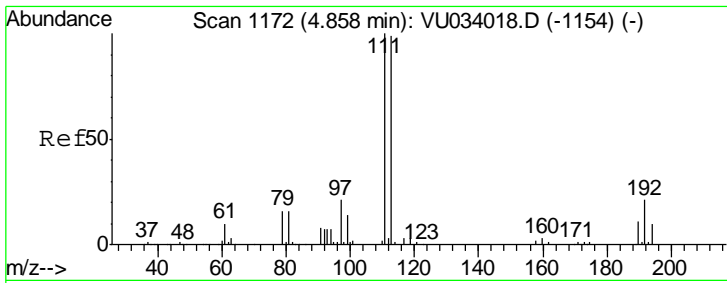
Tgt Ion	Resp	Lower	Upper
65	307942		
67	54.6	0.0	110.6



#34  
 1,4-Difluorobenzene  
 Concen: 50.000 ug/l  
 RT: 5.86 min Scan# 1484  
 Delta R.T. -0.00 min  
 Lab File: VU034070.D  
 Acq: 29 Aug 2019 18:23

Tgt Ion	Resp	Lower	Upper
114	783294		
63	20.9	0.0	42.0
88	16.4	0.0	32.0

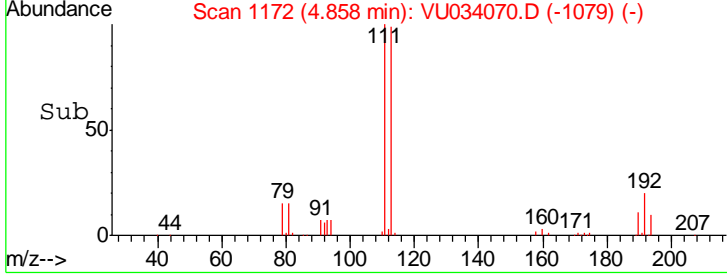
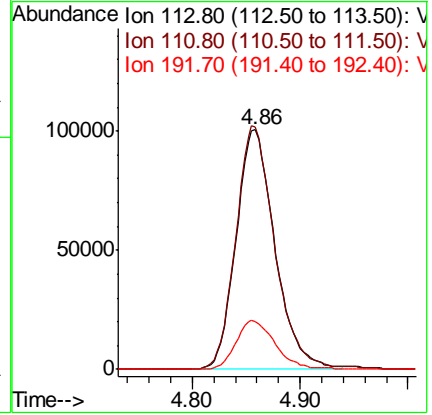
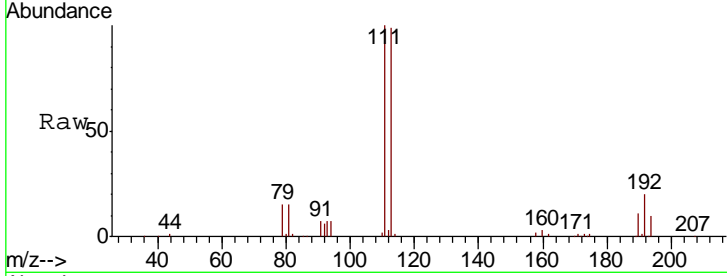




#35  
 Dibromofluoromethane  
 Concen: 46.403 ug/l  
 RT: 4.86 min Scan# 1172  
 Delta R.T. 0.00 min  
 Lab File: VU034070.D  
 Acq: 29 Aug 2019 18:23

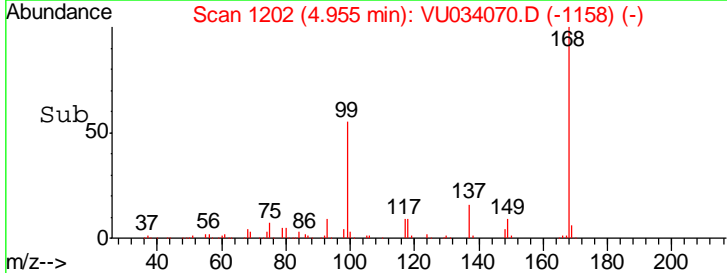
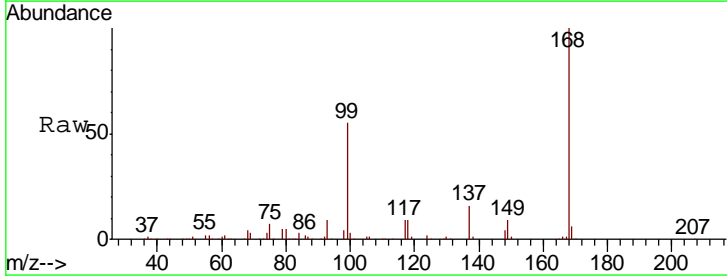
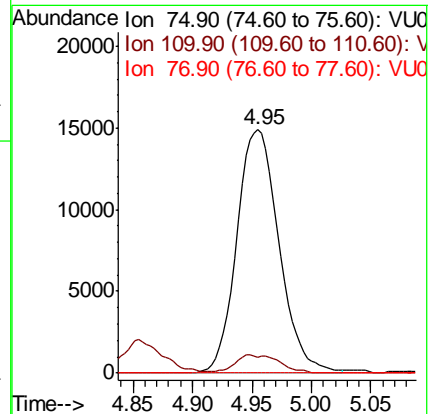
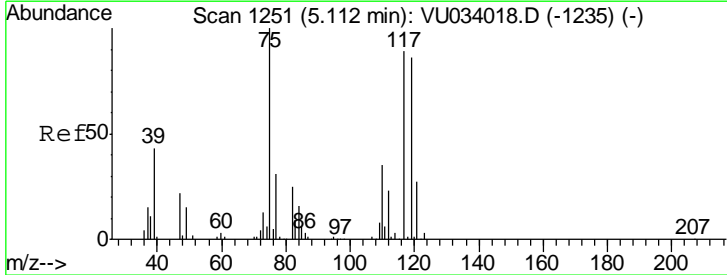
Instrument : MSVOA\_U  
 ClientSampled : S502-K2-9.5-10.0-082819ME

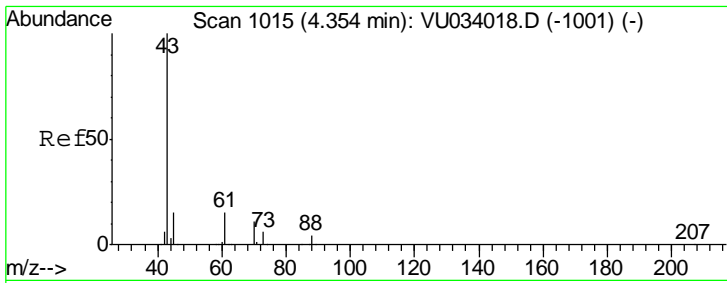
Tgt Ion	Resp	Lower	Upper
113	100		
111	101.4	81.7	122.5
192	20.7	17.1	25.7



#36  
 1,1-Dichloropropene  
 Concen: 4.949 ug/l  
 RT: 4.95 min Scan# 1202  
 Delta R.T. -0.16 min  
 Lab File: VU034070.D  
 Acq: 29 Aug 2019 18:23

Tgt Ion	Resp	Lower	Upper
75	100		
110	7.9	17.8	53.5#
77	0.0	25.0	37.4#

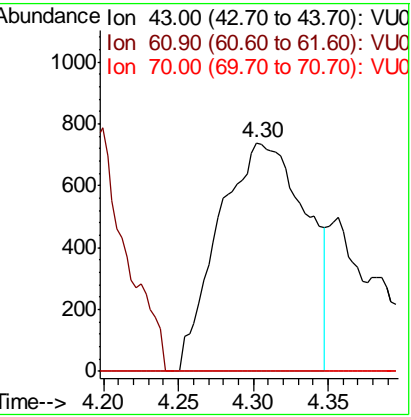
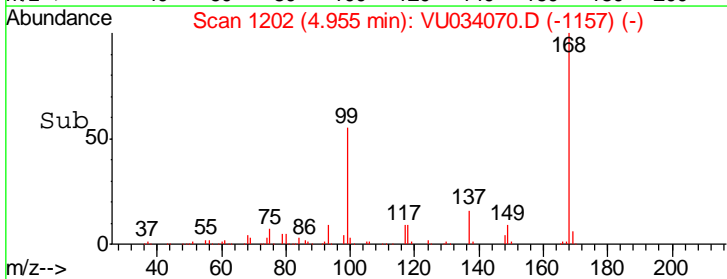
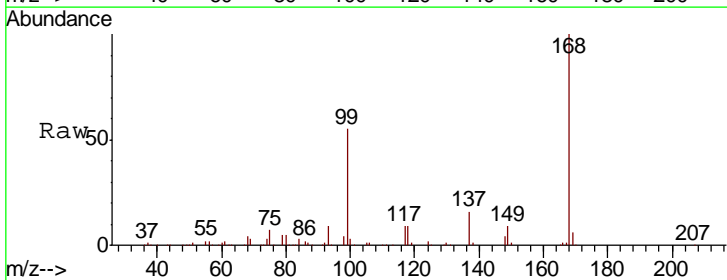
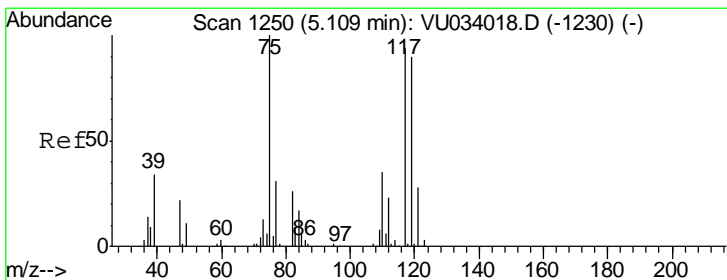
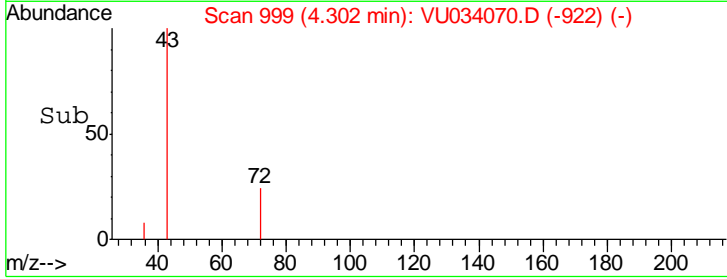
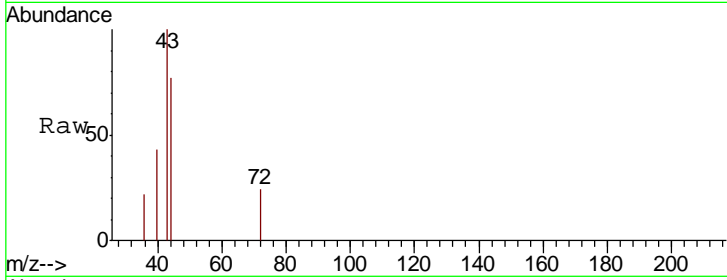




#37  
 Ethyl Acetate  
 Concen: 0.362 ug/l  
 RT: 4.30 min Scan# 999  
 Delta R.T. -0.05 min  
 Lab File: VU034070.D  
 Acq: 29 Aug 2019 18:23

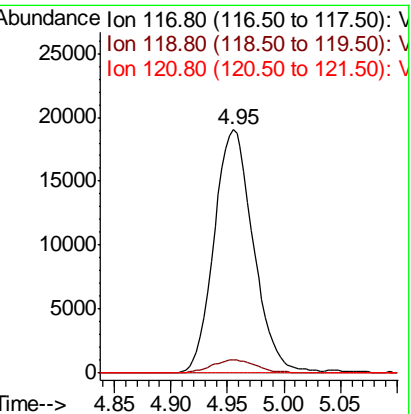
**Instrument :**  
 MSVOA\_U  
**ClientSampled :**  
 S502-K2-9.5-10.0-082819ME

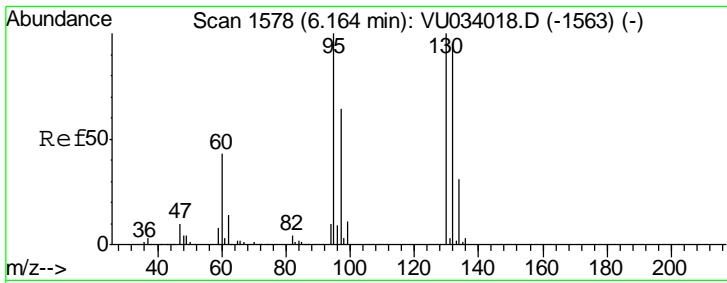
Tgt Ion	Resp	Lower	Upper
43	100		
61	0.0	11.5	17.3#
70	0.0	8.6	12.8#



#38  
 Carbon Tetrachloride  
 Concen: 6.447 ug/l  
 RT: 4.95 min Scan# 1202  
 Delta R.T. -0.15 min  
 Lab File: VU034070.D  
 Acq: 29 Aug 2019 18:23

Tgt Ion	Resp	Lower	Upper
117	100		
119	5.5	77.0	115.4#
121	0.0	23.9	35.9#

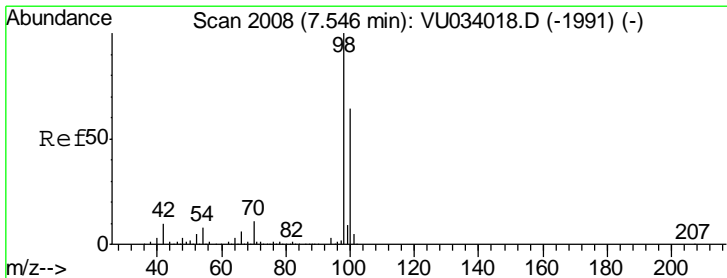
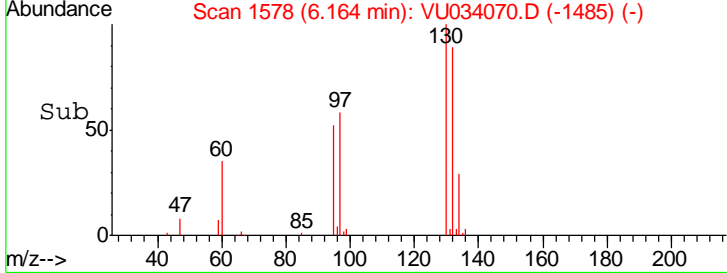
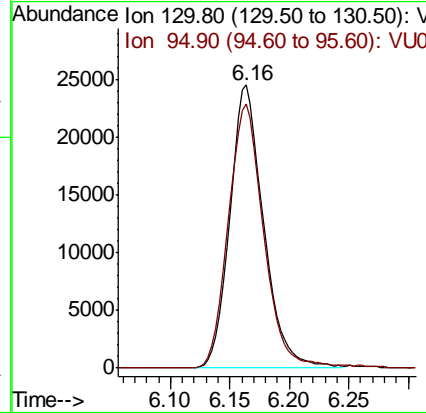
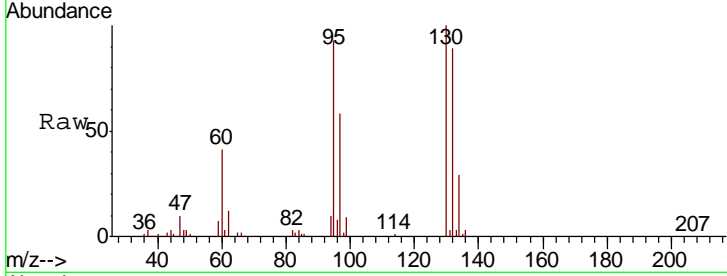




#44  
 Trichloroethene  
 Concen: 8.188 ug/l  
 RT: 6.16 min Scan# 1578  
 Delta R.T. 0.00 min  
 Lab File: VU034070.D  
 Acq: 29 Aug 2019 18:23

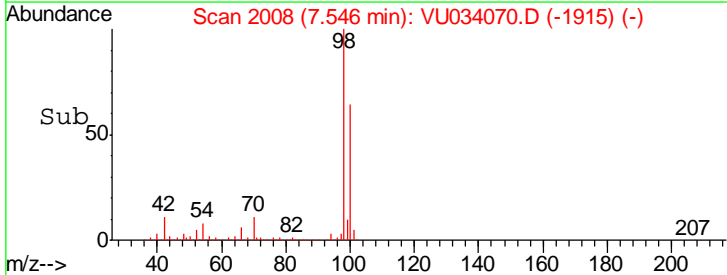
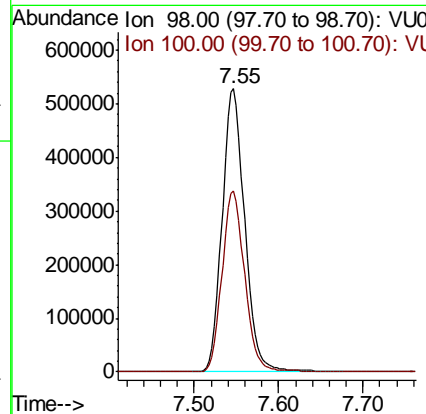
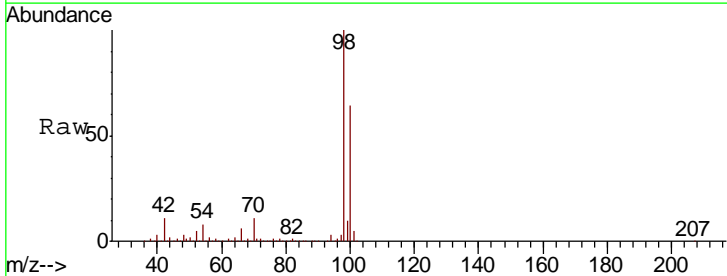
Instrument : MSVOA\_U  
 ClientSampled : S502-K2-9.5-10.0-082819ME

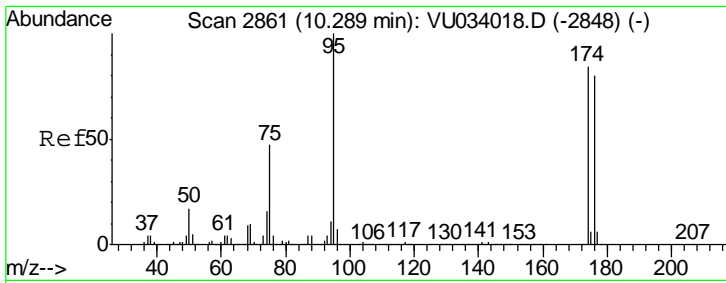
Tgt Ion: 130 Resp: 48201  
 Ion Ratio Lower Upper  
 130 100  
 95 93.3 0.0 199.6



#50  
 Toluene-d8  
 Concen: 48.336 ug/l  
 RT: 7.55 min Scan# 2008  
 Delta R.T. 0.00 min  
 Lab File: VU034070.D  
 Acq: 29 Aug 2019 18:23

Tgt Ion: 98 Resp: 983288  
 Ion Ratio Lower Upper  
 98 100  
 100 64.1 50.3 75.5

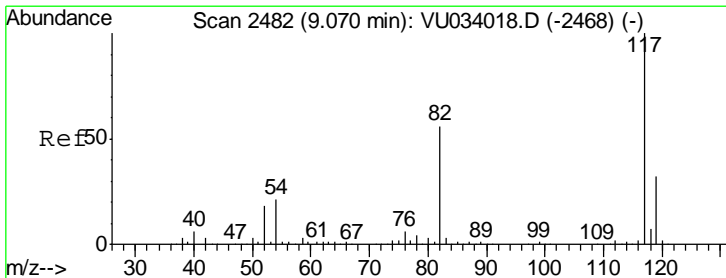
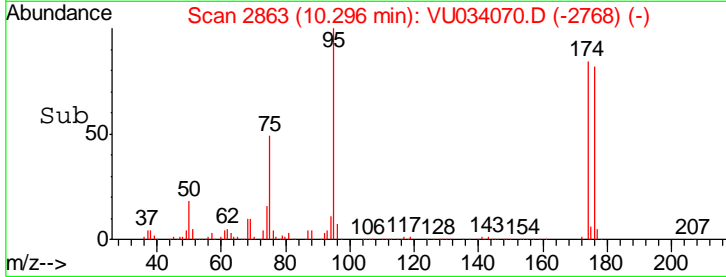
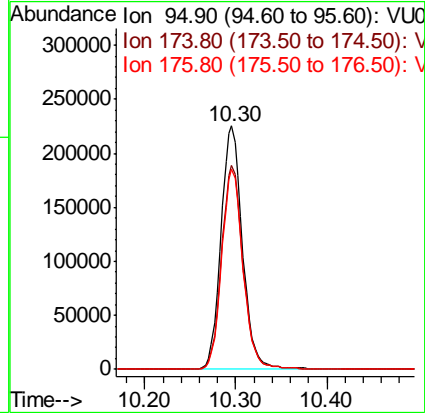
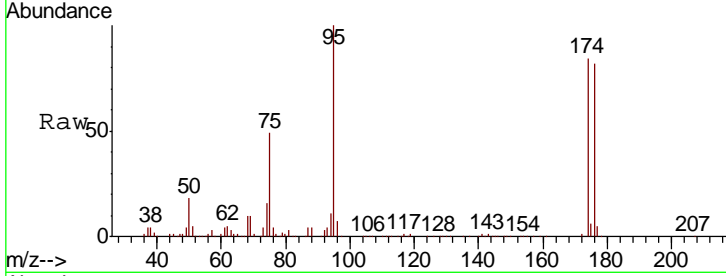




#62  
 4-Bromofluorobenzene  
 Concen: 46.693 ug/l  
 RT: 10.30 min Scan# 2863  
 Delta R.T. 0.01 min  
 Lab File: VU034070.D  
 Acq: 29 Aug 2019 18:23

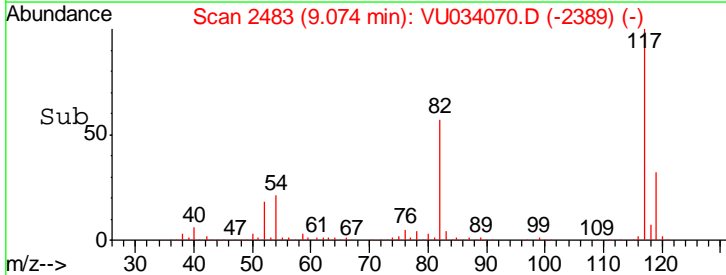
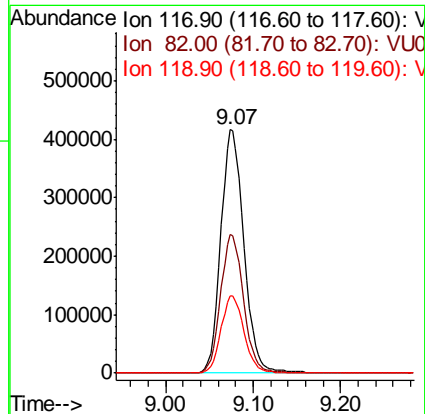
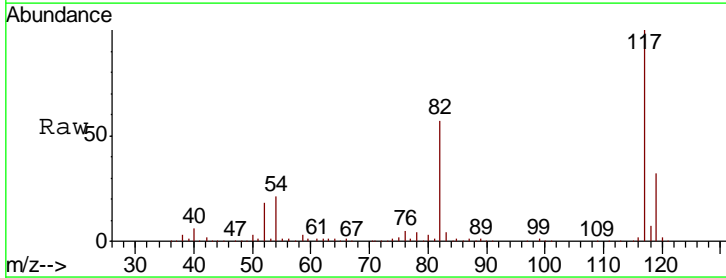
Instrument :  
 MSVOA\_U  
 ClientSampleId :  
 S502-K2-9.5-10.0-082819ME

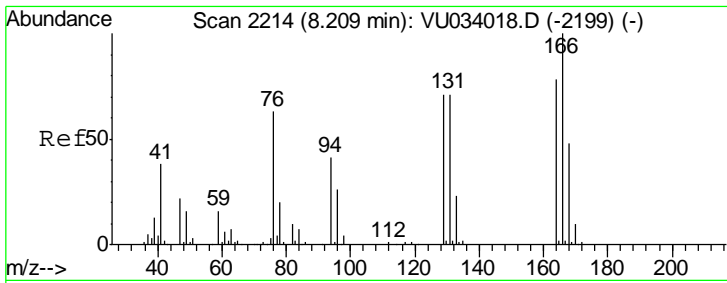
Tgt Ion	Resp	Lower	Upper
95	369484		
174	84.2	0.0	168.8
176	81.8	0.0	161.8



#63  
 Chlorobenzene-d5  
 Concen: 50.000 ug/l  
 RT: 9.07 min Scan# 2483  
 Delta R.T. 0.00 min  
 Lab File: VU034070.D  
 Acq: 29 Aug 2019 18:23

Tgt Ion	Resp	Lower	Upper
117	763990		
82	56.9	45.1	67.7
119	31.8	25.4	38.0

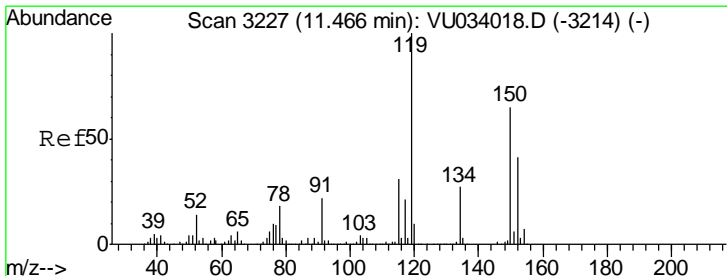
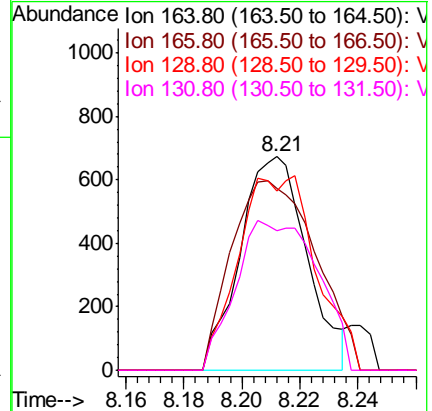
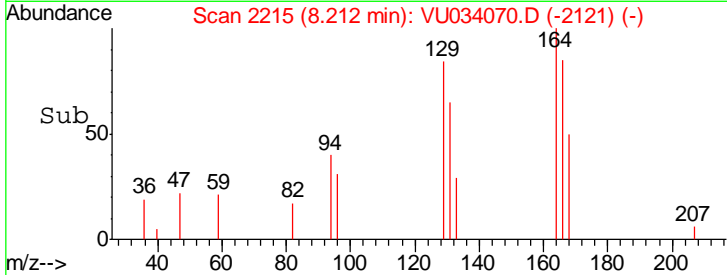
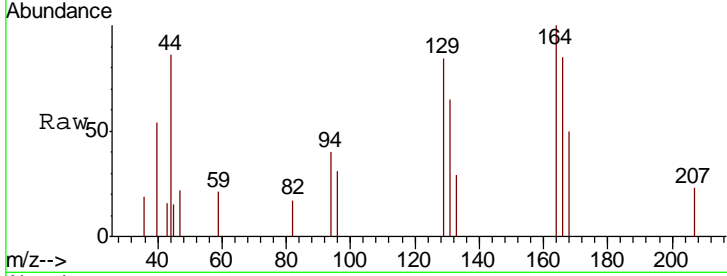




#64  
 Tetrachloroethene  
 Concen: 0.210 ug/l  
 RT: 8.21 min Scan# 2215  
 Delta R.T. 0.00 min  
 Lab File: VU034070.D  
 Acq: 29 Aug 2019 18:23

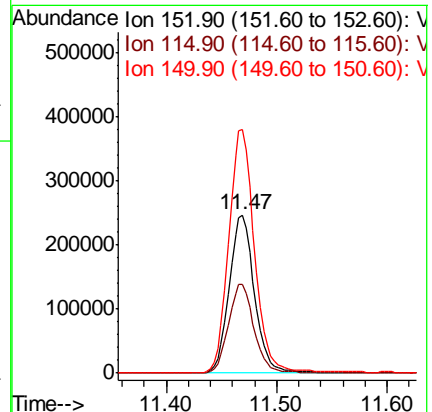
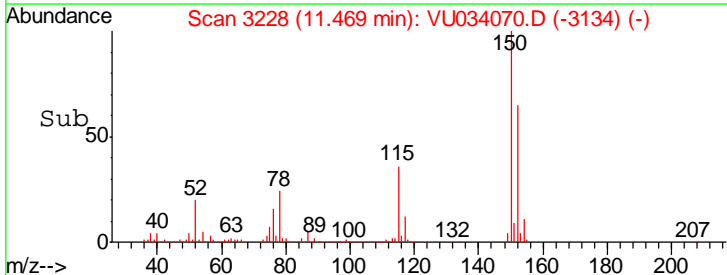
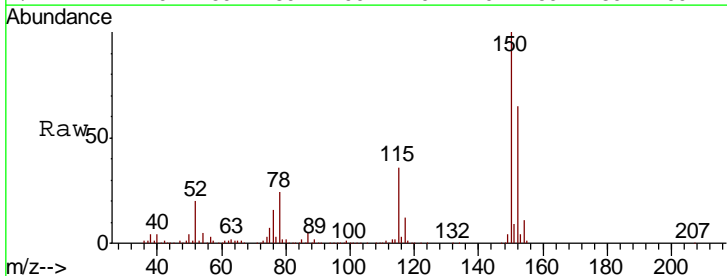
Instrument :  
 MSVOA\_U  
 ClientSampleId :  
 S502-K2-9.5-10.0-082819ME

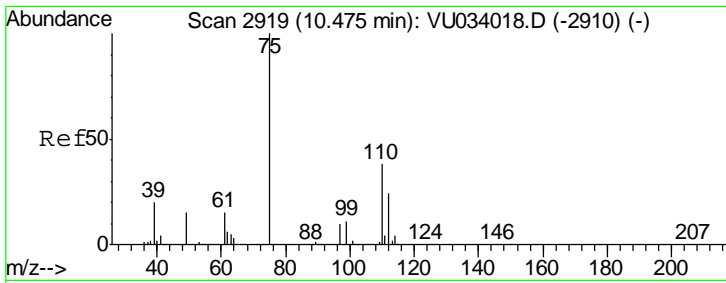
Tgt Ion	Resp	Lower	Upper
164	100		
166	85.3	102.2	153.2#
129	83.7	72.4	108.6
131	65.2	72.1	108.1#



#72  
 1,4-Dichlorobenzene-d4  
 Concen: 50.000 ug/l  
 RT: 11.47 min Scan# 3228  
 Delta R.T. 0.00 min  
 Lab File: VU034070.D  
 Acq: 29 Aug 2019 18:23

Tgt Ion	Resp	Lower	Upper
152	100		
115	57.0	41.1	123.3
150	157.6	0.0	348.8

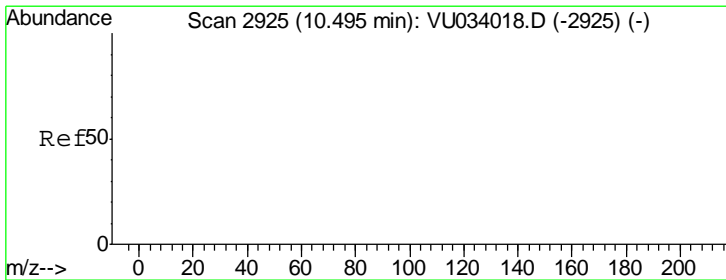
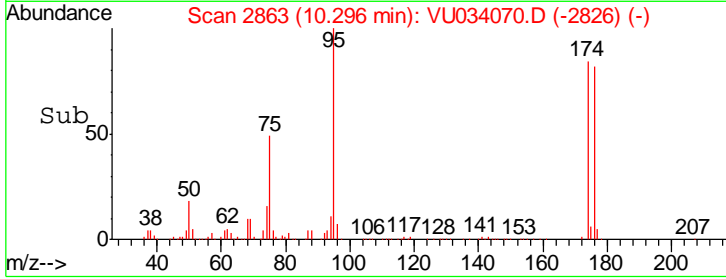
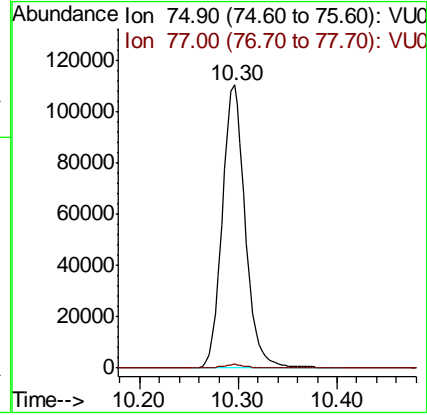
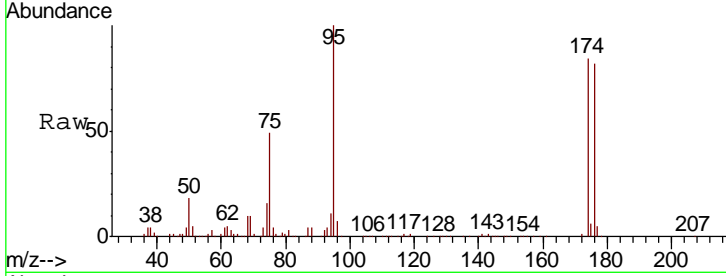




#76  
 1,2,3-Trichloropropane  
 Concen: 20.467 ug/l  
 RT: 10.30 min Scan# 2863  
 Delta R.T. -0.18 min  
 Lab File: VU034070.D  
 Acq: 29 Aug 2019 18:23

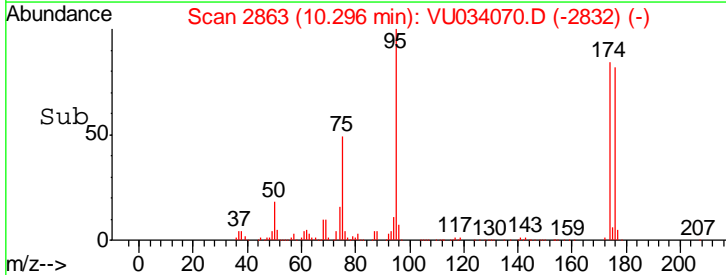
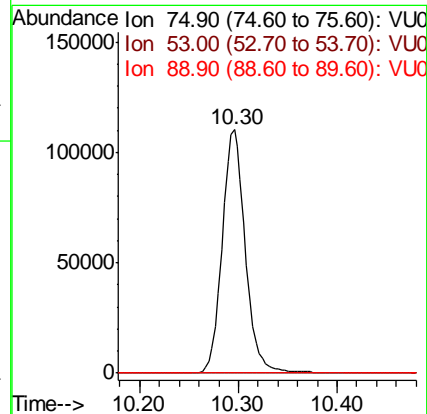
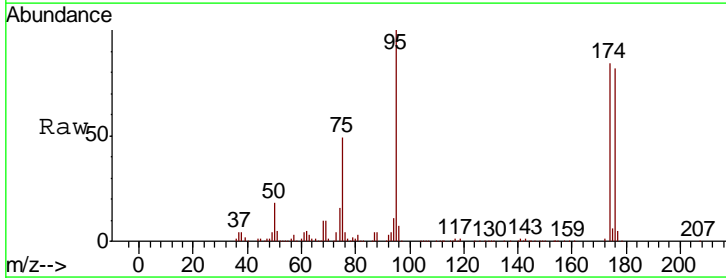
Instrument : MSVOA\_U  
 ClientSampled : S502-K2-9.5-10.0-082819ME

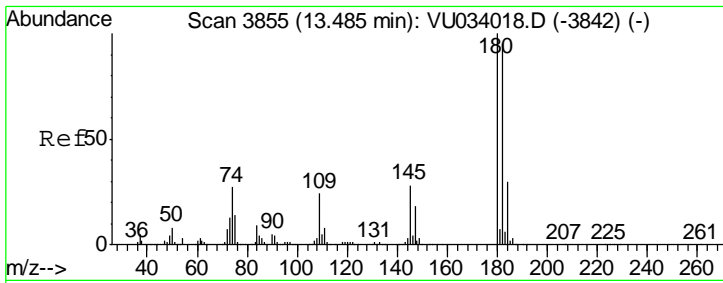
Tgt Ion: 75 Resp: 181335  
 Ion Ratio Lower Upper  
 75 100  
 77 1.3 20.1 60.2#



#81  
 trans-1,4-Dichloro-2-butene  
 Concen: 68.919 ug/l  
 RT: 10.30 min Scan# 2863  
 Delta R.T. -0.20 min  
 Lab File: VU034070.D  
 Acq: 29 Aug 2019 18:23

Tgt Ion: 75 Resp: 181335  
 Ion Ratio Lower Upper  
 75 100  
 53 0.2 0.0 0.0#  
 89 0.0 0.0 0.0

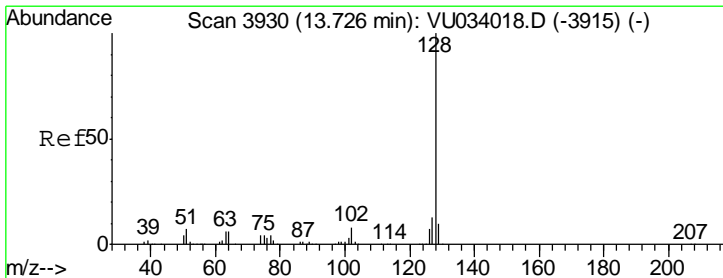
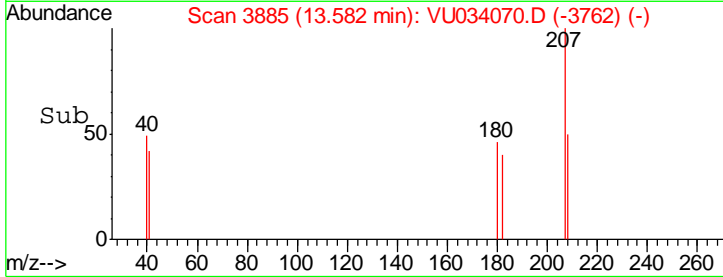
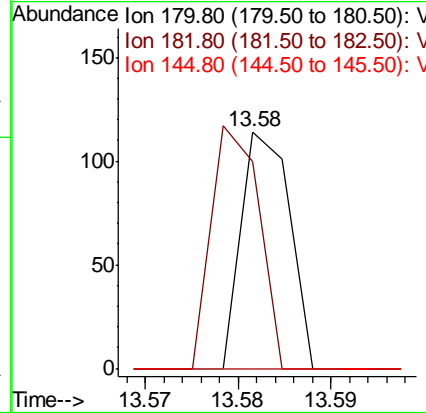
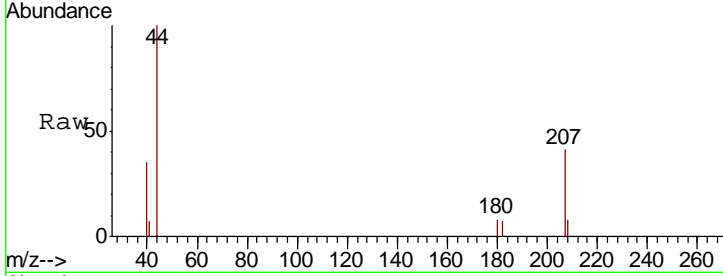




#93  
 1,2,4-Trichlorobenzene  
 Concen: 1.119 ug/l  
 RT: 13.58 min Scan# 3885  
 Delta R.T. 0.10 min  
 Lab File: VU034070.D  
 Acq: 29 Aug 2019 18:23

Instrument : MSVOA\_U  
 ClientSampleId : S502-K2-9.5-10.0-082819ME

Tgt Ion	Resp	Lower	Upper
180	100		
182	102.4	47.4	142.2
145	0.0	14.1	42.3#



#95  
 Naphthalene  
 Concen: 1.794 ug/l  
 RT: 13.81 min Scan# 3957  
 Delta R.T. 0.09 min  
 Lab File: VU034070.D  
 Acq: 29 Aug 2019 18:23

Tgt Ion	Resp	Lower	Upper
128	100		
127	0.0	10.2	15.4#
129	0.0	8.4	12.6#

